

flightOptions



PHENOM 300®

THE PHENOM 300 **DEFINING THE SUPER LIGHT JET**

The Phenom 300 by Embraer has taken the industry by storm. Outperforming both light and many midsize jets, this aircraft is designed for perfection. Born from a clean-sheet design and elegant engineering, the Phenom 300 integrates exceptional performance, unmatched baggage and spacious comfort with the latest technologies. Discover the distinctive features that make the Phenom 300 such an amazing aircraft.

SPECS AT A GLANCE

PASSENGER CAPACITY **7**

BAGGAGE CAPACITY **76** CU FT

NORMAL CRUISE SPEED* **493** MPH

RANGE** **2,298** SM

CABIN LENGTH **17'2"**

CABIN WIDTH **5'1"**

CABIN HEIGHT **4'11"**

MAX ALTITUDE **45,000** FT

* Based on 41,000 ft operating altitude

** Aircraft range considers long range cruise at Flight Options standard operating weight, ISA conditions, zero wind, optimum altitudes, and 4 pax @ 200 lbs each. Range is dependant upon runway length, passenger load, baggage, departure airport elevation, and temperature. All data subject to change without notice.





N304FL

BIGGER, FASTER, STRONGER. CREATED FROM A CLEAN-SHEET DESIGN, THE PHENOM 300 DISPLAYS SOME OF THE INDUSTRY'S MOST INNOVATIVE FEATURES AND TECHNOLOGY. WITH DIMENSIONS MUCH MORE TYPICAL OF A MIDSIZE CABIN AIRCRAFT, THE PHENOM 300 BOASTS A RAMP PRESENCE THAT IS BOUND TO TURN HEADS. THIS AIRCRAFT NOT ONLY LOOKS FIERCE, BUT IT ALSO OUTPERFORMS ALL OTHER LIGHT CABIN AIRCRAFT.



The Phenom 300 by Embraer is powered by two, FADEC controlled next-generation P&WC PW535E engines with 3,200 lbf of thrust each. The twin PW535E engines were designed to meet Embraer's exacting requirements for breakthrough performance and unprecedented fuel efficiency by Pratt & Whitney Canada, the world's leading producer of jet engines.

The engines optimize power while delivering an ISA +15°C, high-flat rating and a 5,000 hour time between overhaul (TBO).

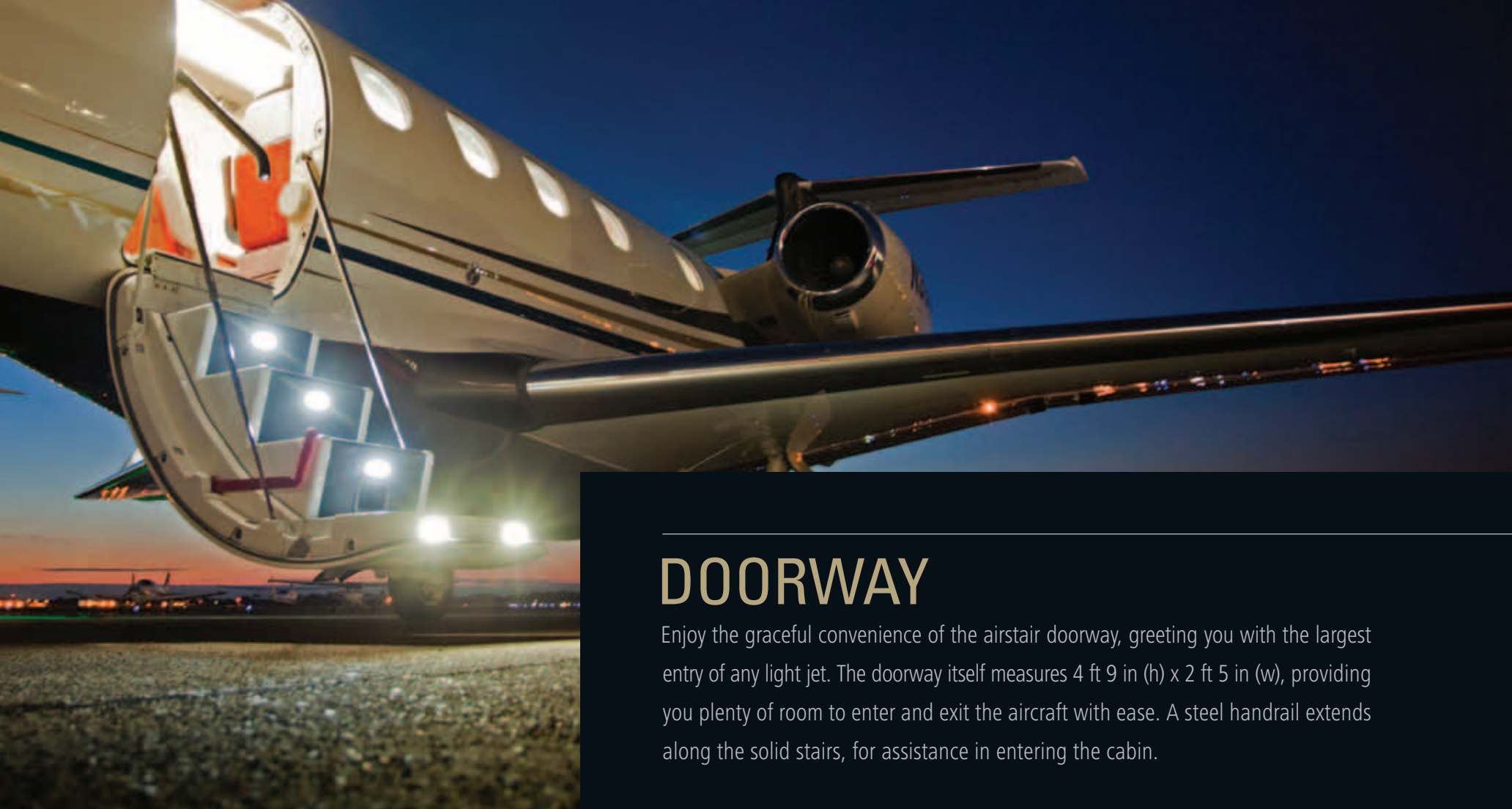
The Phenom 300 far surpasses all environmental requirements producing an average of 25% less CO₂ than older aircraft.

WING

Designed with a swept wing and winglets, these aerodynamic qualities allow the Phenom 300 to maximize cruise performance while also delivering short field capabilities.

The Phenom 300's hot-air, anti-ice system keeps ice from forming on the wings and engine inlets in-flight.





DOORWAY

Enjoy the graceful convenience of the airstair doorway, greeting you with the largest entry of any light jet. The doorway itself measures 4 ft 9 in (h) x 2 ft 5 in (w), providing you plenty of room to enter and exit the aircraft with ease. A steel handrail extends along the solid stairs, for assistance in entering the cabin.

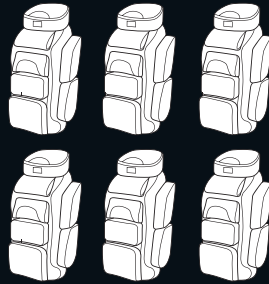
WITH 76 CU FT OF BAGGAGE SPACE, YOU DON'T HAVE TO WORRY ABOUT LEAVING ANYTHING BEHIND. THE PHENOM 300 PROVIDES OUTSTANDING BAGGAGE CAPACITY FOR ITS CLASS, AND OFTEN RIVALS SUPER-MIDSIZE AIRCRAFT.



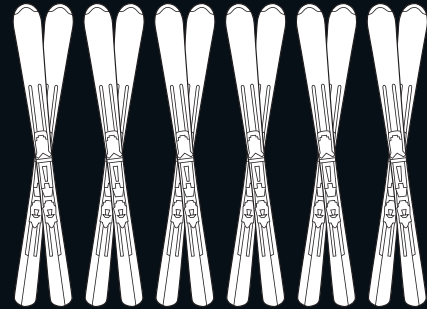
TAKE ALL OF THIS...



PLUS THIS...



OR THIS...



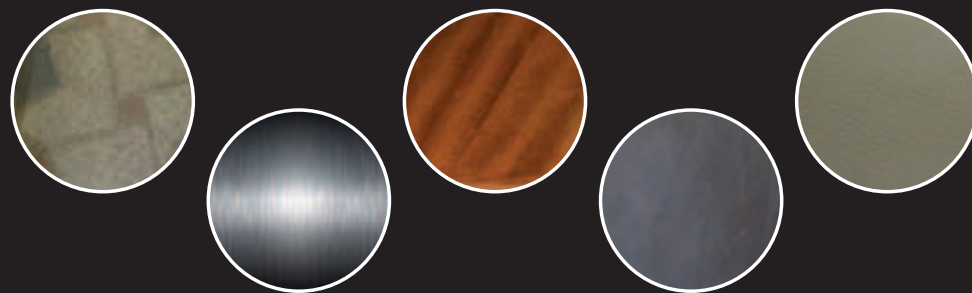
Baggage dependant on # of passengers and trip details. Assumes soft sided baggage.



WELCOME TO YOUR INTERIOR

The cabin ensures unequalled spaciousness and comfort. As soon as you settle into one of the lush seats, you'll notice immediately how the Phenom's proprietary Oval Lite® profile design provides more legroom, more headroom, extra width and more space between the seats than any other light jet available.

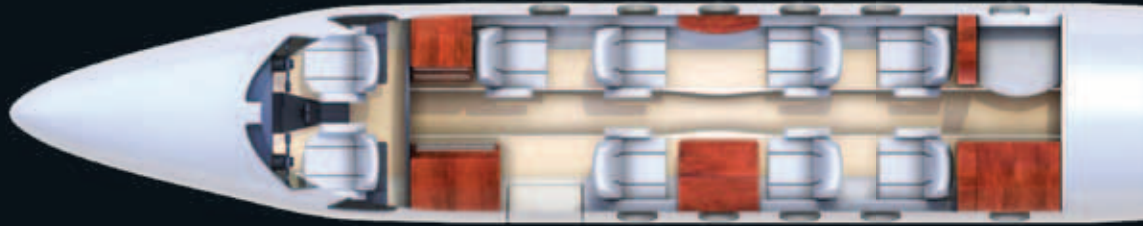
THE LUXURIOUS INTERIOR OF THE PHENOM 300 FEATURES SEVEN SEATS, CUSTOM DESIGNED FOR FLIGHT OPTIONS, AND PERSONAL TOUCHES MADE FROM THE FINEST HARDWOODS, LAMINATES, LEATHERS AND FABRICS.





“WHEN WE TRAVEL, NOT ONLY WITH MY GOLF CLUBS, BUT ALSO WITH FIVE SUITCASES AND ALL THE KIDS’ STUFF, THE PHENOM 300 IS ABSOLUTELY INCREDIBLE FOR LUGGAGE SPACE.”

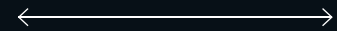
– CHARLES HOWELL III
FLIGHT OPTIONS OWNER



CABIN LENGTH: 17'2"



CABIN HEIGHT: 4'11"



CABIN WIDTH: 5'1"



GALLEY

The design of the cabin provides more room for a full service galley with full refreshment center. Sleek cabinets are stocked with several drawers of your favorite in-flight snacks. There is ample storage to keep your personal selection of beverages cool and at hand.



PRODIGY™ FLIGHT DECK 300

In the cockpit, the Phenom 300's all-glass Garmin® Prodigy Flight Deck 300 enhances situational awareness and provides the latest in flight-deck technology. For added safety and reliability, the Prodigy Flight Deck delivers alert messages in real-time to the Flight Options Operations Control Center (OCC).

THE HIGHLY ADVANCED AVIONICS ARE DISPLAYED VIA THREE VIBRANT 12 INCH LCD SCREENS.

The advanced safety systems include: Enhanced Ground Proximity Warning System (EGPWS), Traffic Alert and Collision Avoidance System (TCAS II), Weather Radar, Nexrad Weather Radar, Engine Indicating and Crew Alerting System (EICAS), Integrated Safe Taxi and Chart View System. In addition to the Prodigy Flight Deck's advanced systems, each Flight Options Phenom 300 is equipped with an Electronic Flight Deck (iPad®).



CABIN PRESSURE

Cabin pressure, even at 45,000 ft, is maintained at a pleasant and comfortable 6,600 ft, the most comfortable of any light jet. And with two distinct temperature zones for the cabin and the cockpit, you are assured the cabin air at every altitude is uniformly comfortable.

SEATS

To upgrade your cabin comfort, Flight Options worked hand-in-hand with Embraer to create exclusive cabin seats for our customers. The new seats have additional padding, a wider back and perforated leather. Also, the Flight Options Phenom 300 has redesigned articulated armrests that stay level when the seat is reclined.



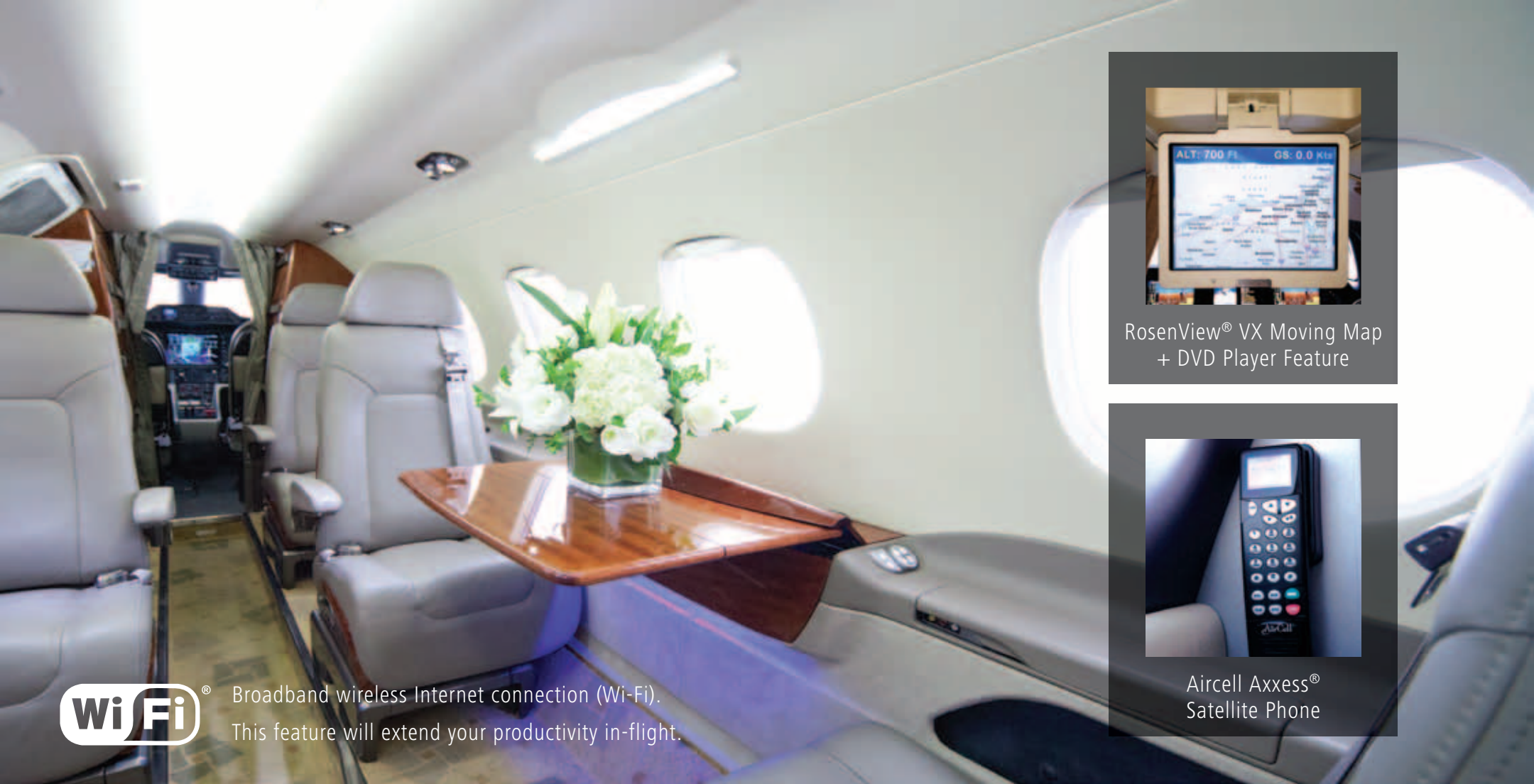


WINDOWS

The Phenom 300's oversized cabin windows are comparable to most large cabin aircraft, creating a luminous interior that helps you feel alert and productive. Enjoy panoramic views from any seat inside the cabin.

LEGROOM

The Phenom 300 was designed to easily accommodate seven, 6'5" passengers. Between the club seats, the aircraft features an amazing 27 inches of legroom. With exceptional space and comfort, you feel like you are onboard a mid or super midsize aircraft.



® Broadband wireless Internet connection (Wi-Fi).
This feature will extend your productivity in-flight.



RosenView® VX Moving Map
+ DVD Player Feature



Aircell Axxess®
Satellite Phone

TECHNOLOGY

Each aircraft is equipped with an Aircell Axxess® satellite phone with US ground-based broadband Internet, providing a reliable connection service. Just because you are in flight doesn't mean you need to stow away your electronics. With onboard Wi-Fi®, you can continue sharing information and documents throughout the duration of your flight. Located in the center aisle near the cockpit, a RosenView® VX Moving Map shows the progression of your flight on a drop-down, overhead monitor. This screen also has DVD player functionality for your viewing pleasure.

Each seat in the aircraft has an audio jack for a headset which can be selected from the DVD output or an auxiliary input at the VIP seat. There are power outlets available along the sidewalls in the cabin. While enroute to your destination, you can charge your devices to arrive with full power.



400 MPH

300 MPH

200 MPH

100 MPH

493 MPH



BY COMBINING A SWEPT WING TO REDUCE DRAG WITH THE MUSCLE OF POWERFUL ENGINES, THE PHENOM 300 FLIES FAST AND FIERCE. THE NORMAL CRUISE SPEED OF THE PHENOM 300 IS 493 MPH, GETTING YOU TO YOUR DESTINATION QUICKLY AND EFFICIENTLY.

TIME TO CLIMB

The Phenom 300 can handle restrictive airports, depart from high elevations in ski country or short runways in hot conditions. All of this while climbing to 35,000 ft in 12 minutes with ease.

ALTITUDE

Fly high above most turbulence and air traffic, with a maximum cruising altitude of 45,000 ft. for a smoother and more comfortable ride.



35,000 FT

45,000 FT
(MAX ALTITUDE)



BRAKING DISTANCE

Trailing link landing gear helps ensure a smooth landing, and incorporates a state-of-the-art brake-by-wire system with anti-skid capability delivering safe, reliable performance with excellent stopping results.

RANGE

The Phenom 300 boasts a flying distance up to 2,298 sm, or roughly 4.5 hours en route*. Experience amazing performance capabilities, traveling non-stop spans that simply can't be done with other light cabin aircraft.

**Time en route is an estimate based on the atmospheric conditions and subject to change.*

PHENOM 300 SPECIFICATIONS AND PERFORMANCE

CERTIFICATION Part 23

PROPULSION Two Pratt and Whitney Canada PW535E

AVIONICS Garmin® Prodigy™ Flight Deck 300

EXTERNAL DIMENSIONS

Length	51'4"
Width (wingspan)	52'2"
Height	16'9"

CABIN DIMENSIONS

Length	17'2"
Max Width	5'1"
Max Height	4'11"
Floorline Width	3'7"

CABIN VOLUME 325 cu ft

CABIN DOOR DIMENSIONS

Width	29"
Height	58"

BAGGAGE CAPACITY

Rear	66 cu ft
Front	5 cu ft
Internal	5 cu ft
Total	76 cu ft

RANGE
(4 OCCUPANTS, NBAA RESERVES) 2,298 sm

**TAKE OFF &
LANDING
DISTANCE**

Per Flight Options operation specifications,
must be 3,200' minimum runway required

**HIGH SPEED
CRUISE**

.76 Mach/493 mph

MMO

.78 Mach

**TIME TO CLIMB
TO FL350**

10min @ 15,000 lbs/12min @ MGTOW

**MAX OPERATING
ALTITUDE**

45,000'

**MAX TAKEOFF &
LANDING ELEV.**

14,000'

**SYSTEM
HIGHLIGHTS**

Wi-Fi®, externally serviced lavatory, single-point
refueling, brake-by-wire and carbon brakes, bleed
air anti-ice systems, trailing link landing gear

TO VIEW PHENOM 300 COMPETITIVE SPEC COMPARISONS,
PLEASE SCAN THE QR CODE BELOW WITH YOUR SMART
PHONE OR VISIT:

WWW.FLIGHTOPTIONS.COM/FLEET/PHENOM-300





“WHEN I SAT IN THE PHENOM 300 FOR THE FIRST TIME, I WAS IMPRESSED. THE HEIGHT, WIDTH AND LENGTH COMBINE TO ACHIEVE THE BEST OVERALL CABIN VOLUME, BUT IT ALSO FELT ROOMIER – MORE LIKE A MIDSIZE-CABIN JET.”

– KEVIN O’LEARY
FORBES

LOOKING FOR ANOTHER OPTION – PREVIEW THE FLEET



HAWKER 400XP

PASSENGER CAPACITY 7
BAGGAGE CAPACITY 46.4 CU FT
NORMAL CRUISE SPEED* 483 MPH
RANGE** 1,491 SM
CABIN LENGTH 15'6"
CABIN WIDTH 4'11"
CABIN HEIGHT 4'9"
MAX ALTITUDE 45,000 FT



NEXTANT 400XT™

PASSENGER CAPACITY 7
BAGGAGE CAPACITY 46.4 CU FT
NORMAL CRUISE SPEED* 483 MPH
RANGE** 2,096 SM
CABIN LENGTH 15'6"
CABIN WIDTH 4'11"
CABIN HEIGHT 4'9"
MAX ALTITUDE 45,000 FT



CITATION X

PASSENGER CAPACITY 8
BAGGAGE CAPACITY 72 CU FT
NORMAL CRUISE SPEED* 575 MPH
RANGE** 3,638 SM
CABIN LENGTH 23'7"
CABIN WIDTH 5'6"
CABIN HEIGHT 5'7"
MAX ALTITUDE 51,000 FT



LEGACY 600®

PASSENGER CAPACITY 13
BAGGAGE CAPACITY 240 CU FT
NORMAL CRUISE SPEED* 501 MPH
RANGE** 3,747 SM
CABIN LENGTH 49'8"
CABIN WIDTH 6'9"
CABIN HEIGHT 6'0"
MAX ALTITUDE 41,000 FT

* Based on 41,000 ft operating altitude

** Aircraft range considers long range cruise at Flight Options standard operating weight, ISA conditions, zero wind, optimum altitudes, and 4 pax @ 200 lbs each. Range is dependant upon runway length, passenger load, baggage, departure airport elevation, and temperature. All data subject to change without notice.



Fractional Membership Jet Card

877.703.2348 • flightoptions.com

Flight Options® and the Flight Options logo are trademarks or registered trademarks of Flight Options, LLC.

Nextant 400XT™ is a trademark of Nextant Aerospace, LLC and/or its affiliates.

Phenom 300®, Legacy 600®, Oval Lite® and Prodigy™ are trademarks or registered trademarks of Embraer – Empresa Brasileira de Aeronautica S.A.

Garmin® is a registered trademark of Garmin Ltd. or its subsidiaries.

iPad® is a registered trademark of Apple Inc.

Aircell Axxess® is a trademark of Aircell Business Aviation Services LLC.

Wi-Fi® is a registered trademark of the Wi-Fi Alliance.

RosenView® is a registered trademark of Rosen Aviation, LLC.