

ABX Pentra 400

Clinical Chemistry system



Up to 420 tests/hour
55 Parameters
Validation Station

Pentra 400

ABX Pentra 400

From routine to specific testing

ABX Pentra 400 is an extremely compact Clinical Chemistry benchtop analyser. Its great autonomy with continuous loading provides enhanced productivity in a user-friendly environment.



- Up to 420 tests per hour with the ISE module
- 55 on-board parameters with back-up availability
- Innovative cassette format
- Integrated work station and validation station
- Touch screen interface
- Real-time follow-up of your workflow

Reagent management



- Barcoded cassettes
- Optimised test packaging
- Reagent test count down with automatic back-up
- Refrigerated zone with up to 44 positions
- Extensive on-board test menu
- User defined channels

Sample management



- Positive identification
- Multiple sample checks using shock, level and fibrin detection
- Continuous loading
- STAT capability
- Automatic Pre / Post-dilution
- Automatic Re-run

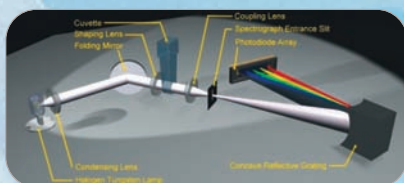
Patient management



- Work list generated by a manual entry or bi-directional connection
- Automatic validation based on user defined rules
- Intelligent delta checking
- Panic values monitoring
- Unlimited patients reports archiving



A concentration of technology
for high quality results

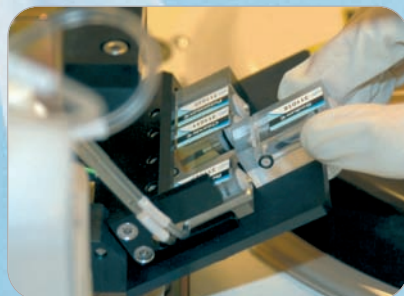


High-precision optical system

To meet the requirements for highly accurate photometric measurements, HORIBA Medical has chosen the holographic grating technology developed in collaboration with HORIBA Scientific (Jobin Yvon Technology).

- ❖ Spectral unit offering 15 different wavelengths (mono or bi-chromatic)
- ❖ Optimised reading by continuous sweep
- ❖ Highly sensitive measuring (validated holographic technology)
- ❖ Space-saving design with maximum efficacy provided by the tungsten lamp

The holographic grating technology reduces light diffraction and provides a high signal / noise ratio which significantly increases the quality of measurement to produce precise and stable test results.



Integrated ISE module

Optional ISE module designed by HORIBA Ltd., Japan.

- ❖ 180 tests/hour
- ❖ Simultaneous analysis of Sodium, Potassium and Chloride
- ❖ Applications on Serum, Plasma and Urine



High quality analytical technology

- ❖ Single-use reaction cuvette
To perform the most sensitive tests and all latex assays with high stability results.
- ❖ High performance mixer design
For optimal homogenisation in minimum time without cross-contamination.
- ❖ Optimum test sequence setting program with Incompatibility function



An extensive panel of liquid reagents

To simplify your workflow, HORIBA Medical presents a range of CE-marked reagents in a single format.



Cassette packaging

- Mono / Bi reagent cassettes
- Ready-to-use
- Extended range
 - > 52 reagents
 - > Enzymes / Substrates / Specific Proteins

Easy management of your lab processes

- Random position on board
- Automatic traceability : lot number, expiration date, ...
- Automatic back-up
- Just one calibrator and two controls for global routine analysis

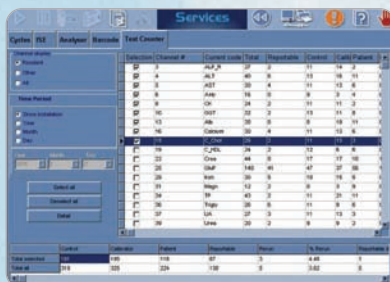
Environment protection

Compact cassette packaging that respects the environment

- No more superfluous packaging
- Saves refrigerator space

Cost control

- Optimised number of tests per cassette
- Limited calibrations
- Re-run analysis according to laboratory defined rules
- Activity measurement thanks to the test counter option (1)

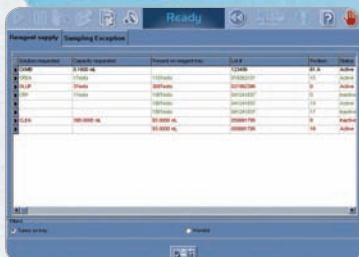


1 - Test counter

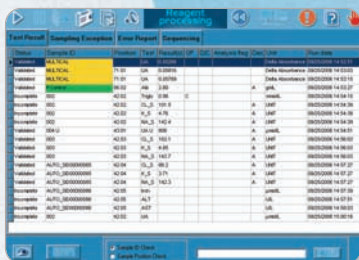
ABX Pentra 400 **New Generation**

“Enjoy Clinical Chemistry... Let ABX Pentra 400 do the rest.”

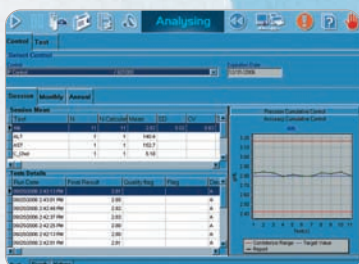
ABX Pentra 400 was designed and developed by HORIBA Medical to offer the best combination of AUTOMATION, FLEXIBILITY and SAFETY to meet the current clinical laboratory requirements.



1 - Workbalance



2 - Test review



3 - Quality Control

SAVE VALUABLE TIME

Automatic reagent management

- ❖ Intelligent monitoring of reagent supply : the “workbalance” function assesses the stock on board relative to the workload requirements (1)
- ❖ Use limit date and Calibration validity checks

Real-time workflow follow-up

- ❖ Control all your operations from the main screen (system, reagent and sample status)
- ❖ Dynamic display of the test results and sampling exceptions with the test review function (2)
- ❖ Multiple alarm sounds available

Reduced maintenance procedures

- ❖ Automatic daily procedures
- ❖ Maintenance alerts
- ❖ Easy uploading of target values for calibrators and controls

SECURE DATA MANAGEMENT

Secured results validation

- ❖ Westgard multirule Quality Control procedure with up to 3 controls
- ❖ Automatic calibration factor check
- ❖ Selective flagging

Reliable traceability in compliance with Accreditation Standards

- ❖ Operator login history / Reagents, Calibration and Maintenance logs
- ❖ Full patient results traceability : multi-format option for archives review, end of day patient reports
- ❖ Full QC program : Up to 12-month control history, Levey-Jennings and Statistics (3)
- ❖ Easy export of archived data (USB key)

ABX Pentra **400**
Clinical Chemistry system by HORIBA Medical



HORIBA
Medical

FRANCE +33 (0)4 67 14 15 15 - BENELUX +32 (0)3 281 49 08 - ITALY +39 / 06 51 59 22 1 - SPAIN +34 / 91- 353 30 10 - PORTUGAL +351 / 2 14 72 17 70
UK +44 (0) 1604 542650 - POLAND +48 / 22 6732022 - USA +1 / 949 453 0500 - BRAZIL +55 / 11 5545 1500 - THAILAND +66 / 2 861 59 95
CHINA +86 / 21 3222 1818 - GERMANY AXON LAB AG +49 / 7153 92260 - DISTRIBUTORS NETWORK +33 (0)4 67 14 15 16
HORIBA Medical online : <http://www.horiba.com>

