

P5 Briefing for Parents

[https://form.gov.sg/
603c903039905900
1248679a](https://form.gov.sg/603c9030399059001248679a)



While waiting for the session to start, please scan the QR code to indicate your presence



A Gracious Community of Confident and Innovative Life-long Learners
Igniting the Joy of Learning, Inspiring all to Care and Share



Agenda

- Changing Educational Landscape
 - PPS Assessment Plan for P5
 - Direct School Admission (DSA)
 - Home-School Partnership
 - Q&A
 - Feedback
 - The Singapore Kindergarten Impact Project (SKIP)
-
- Please do not do any recording.
 - The presentation slides will be made available on the school website.



Changing Educational Landscape



A Gracious Community of Confident and Innovative Life-long Learners
Igniting the Joy of Learning, Inspiring all to Care and Share



Education for the Future

But no one knows for sure what jobs are going to be around in 20 or 30 years. And that is why we also have to focus on developing obsolescence-proof skills, as Ms Irene Ng put it – the skills that will apply regardless of the job. We know roughly what they are, but we have to keep sensing the skills that are in need in the future economy. Being inquisitive, thinking in original ways, being in the habit of continuous learning. And importantly, the ability to interact with and respect others. These are skills that MOE is focusing on, from the early years and all the way through the school system.

*Extracted from 2014 Budget Debate by DPM
and Minister for Finance, Mr Tharman
Shanmugaratnam, 5 March 2014*



Focus on Lifelong Learning

*“As technology continues to disrupt industries and jobs, Singapore must recognize that **lifelong learning** has become necessary. Continuous pursuit of knowledge is the way for the young to prepare for their future.”*

*Economic Society of Singapore
Annual Dinner, July 2018. Speech
by Minister for Education, Mr Ong
Ye Kung*



Joy of Learning

*“... the pre-requisites of an ideal education system – **the joy of learning** should be at its heart. Education is not about doing well in examinations or focussing narrowly on book knowledge. Rather, it should inculcate a **spirit of curiosity and desire to learn.**”*

*Extracted from Principia,
Volume 13, Number 1, 2021,
Mr Lawrence Wong, Minister
for Education*

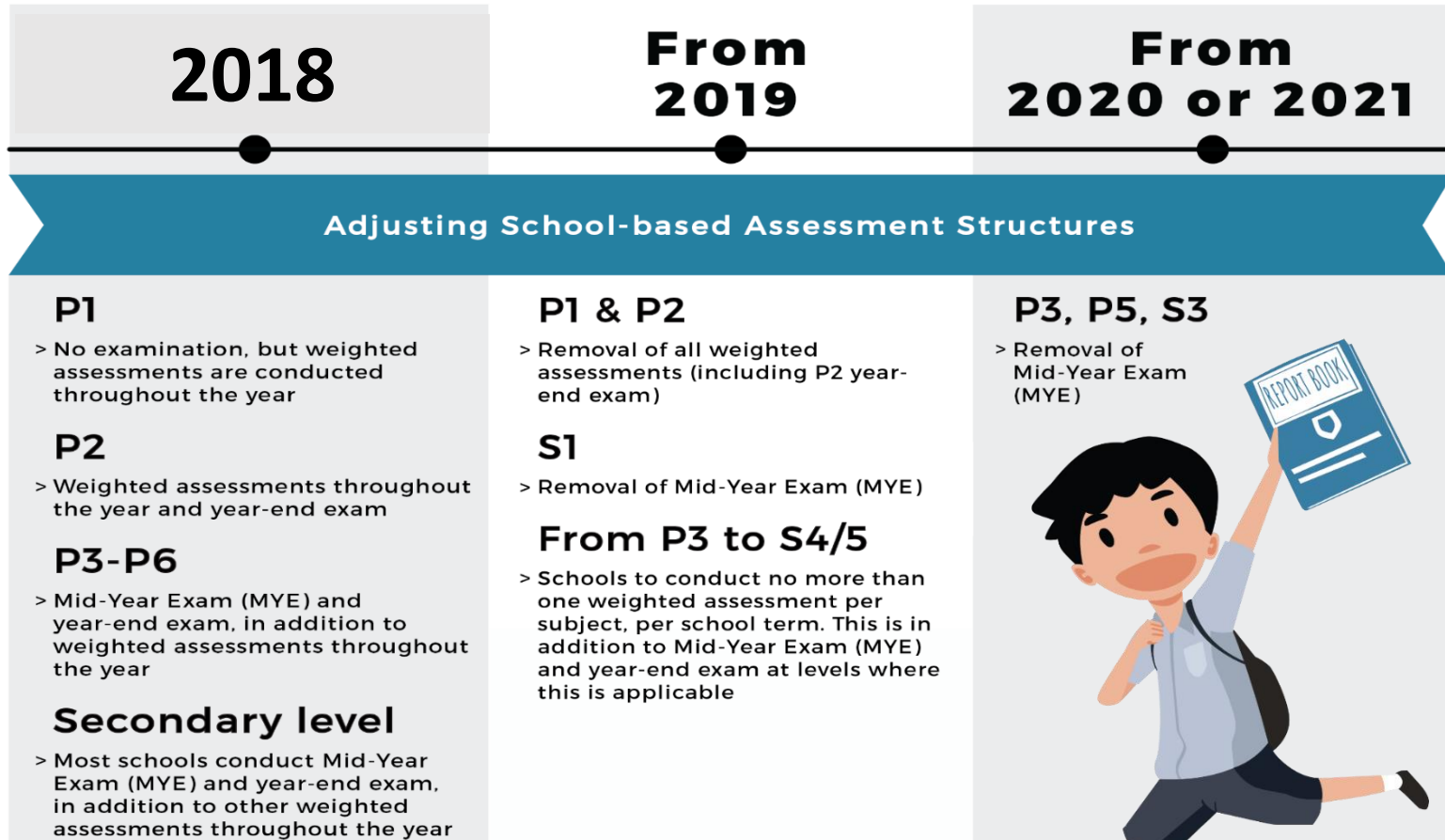


Response to the Changing Landscape

- Exams and tests whilst important, **cannot be over-emphasized** to the extent that it undermines the holistic development of children, and douses their curiosity to learn
- Schools are shifting from overly relying on grades and marks to **focus on mastery and learning**
- Multiple sources of information to assess learning progress - daily work, feedback from teachers, observations, conversations with your child, etc.



Changes at a Glance



PPS Assessment Plan for P5

- Part of a bigger picture...



A Gracious Community of Confident and Innovative Life-long Learners
Igniting the Joy of Learning, Inspiring all to Care and Share



P5 Weighted Assessment & Year-End Exam

Assessment	English	MTL	Math	Science	Weighting of Assessment	Combined Weighting
Term 1:WA	Listening Comprehension	Listening Comprehension	Performance Task	Topical Review	5%	20%
Term 2:WA	Reading Comprehension & Language Use	Grammar & Reading Comprehension	Topical Review	Topical Review	15%	
Term 3:WA	Reading Comprehension & Language Use	Picture Composition - Narrative	Performance Task	Practical Test	10%	10%
End-of-year Exam	P5 Year-End Exam: <ul style="list-style-type: none"> ▪ LC ▪ Oral ▪ Writing ▪ Paper 2 	Year-End Exam: <ul style="list-style-type: none"> ▪ LC ▪ Oral ▪ Writing ▪ Paper 2 	P5 Year-End Exam: <ul style="list-style-type: none"> ▪ <u>Paper 1</u> ▪ Booklet A: MCQ ▪ Booklet B: SAQ ▪ <u>Paper 2</u> ▪ SAQ and LAQ 	P5 Year-End Exam: <ul style="list-style-type: none"> ▪ Booklet A: MCQ ▪ Booklet B: OEQ 	70%	70%



P5 FDN Weighted Assessment & Year-End Exam

Assessment	English	MTL	Math	Science	Weighting of Assessment	Combined Weighting
Term 1:WA	Listening Comprehension	Listening Comprehension	Performance Task	Topical Review	5%	20%
Term 2:WA	Reading Comprehension & Language Use	Grammar & Reading Comprehension	Topical Review	Topical Review	15%	
Term 3:WA	Reading Comprehension & Language Use	Grammar & Reading Comprehension	Performance Task	Practical Test	10%	10%
End-of-year Exam	P5 Year-End Exam: <ul style="list-style-type: none"> ▪ LC ▪ Oral ▪ Writing ▪ Paper 2 	P5 Year-End Exam: <ul style="list-style-type: none"> ▪ LC ▪ Oral ▪ Paper 1 (Language Application) 	P5 Year-End Exam: <ul style="list-style-type: none"> ▪ <u>Paper 1</u> ▪ Booklet A: MCQ ▪ Booklet B: SAQ ▪ <u>Paper 2</u> ▪ SAQ and LAQ 	P5 Year-End Exam: <ul style="list-style-type: none"> ▪ Booklet A: MCQ ▪ Booklet B: Structured Qn & OEQ 	70%	70%



P5 Higher Mother Tongue Weighted Assessment & Year-End Exam

Assessment	HMTL	Weighting of Assessment	Combined Weighting
Term 1:WA	Grammar & Reading Comprehension	5%	20%
Term 2:WA	Grammar & Reading Comprehension	15%	
Term 3:WA	Composition	10%	10%
End-of-year Exam	P5 Year-End Exam	70%	70%



Examination Details

- Further details of examinations, such as dates, duration, topics to be examined, etc. will be sent to parents at the beginning of the term through Parents Gateway (PG).



Presentation of Results in ALs

- Starting from the 2020 P5 cohort, schools will present school-based **examination results** of P5 and P6 students **in ALs**.
- This will help familiarise students and parents with the new AL scoring system.
- The AL reflects the mastery of a broader curriculum, rather than for topical or component performance. As such, **AL will not be reflected for weighted assessments (WA)**.

AL	RAW MARK RANGE
1	≥ 90
2	85 – 89
3	80 – 84
4	75 – 79
5	65 – 74
6	45 – 64
7	20 – 44
8	< 20

AL will **not** be reflected for WA

Holistic Development Profile					
				Page: 1 of 1 Date: 29 Nov 2020	
Name	: Joyce				
Age on 1st Jan	: 10		Identification No: T09XXXXXF		
Class	: 5 Challenge	S/N : 5	Subject Combination: 3S1F(FSC)		
Form Teacher	: Miss Tan				
Co-Form teacher	: Miss Low				
SUBJECT	TERM 3: WA	END OF YEAR EXAM		OVERALL	
	Mark	Mark	AL	Mark	AL
ENGLISH LANGUAGE	85	88	2	86	2
MATHEMATICS	74	76	4	75	4
FOUNDATION SCIENCE	65	74	8	70	8
CHINESE LANGUAGE	87	88	2	88	2
	Grade	Grade		Grade	
SOCIAL STUDIES	-	-		A	
ART	-	-		A	
MUSIC	-	-		B	
PHYSICAL EDUCATION	-	-		B	
OVERALL					
Total Achievement Level (AL) Score	: 15				
Attendance	: 95/95				
Class for Next Year	: P6-CH				
Subject Combination for Next Year	: 3S1F(FSC)				

Foundation Level AL	Raw Mark Range
A	75 – 100
B	30 – 74
C	< 30

Update from "Grade" to "AL"

Field to compute "Total AL Score"



Direct School Admission for Secondary Schools (DSA-Sec)



A Gracious Community of Confident and Innovative Life-long Learners
Igniting the Joy of Learning, Inspiring all to Care and Share



Entering a Secondary School



PSLE/S1 Posting Process

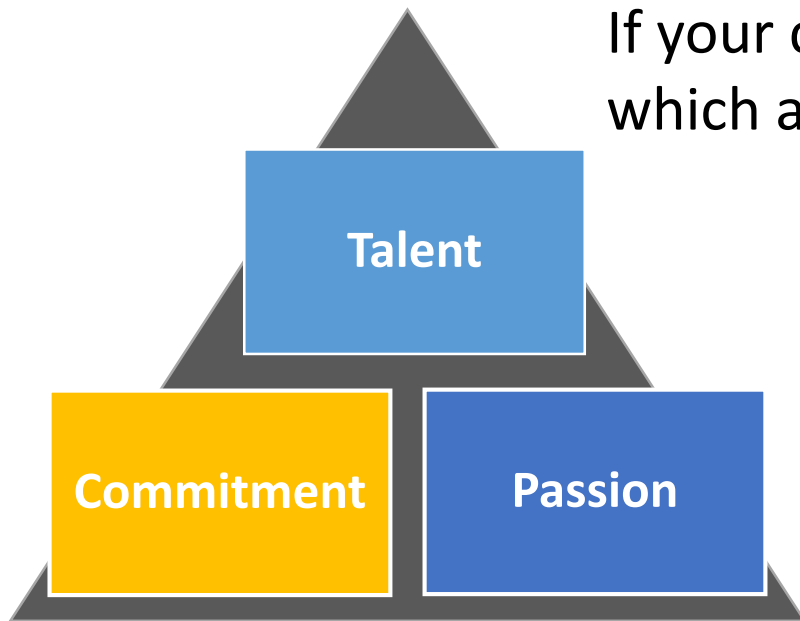
- Based on a student's **PSLE score**
- **Most students enter secondary schools this way**



DSA-Sec

- Based on a diverse range of **talents and achievements in specific academic subjects or non-academic areas, beyond what the PSLE recognises**
- Allows students to **access school programmes to develop their talents**

Is the DSA-Sec right for my child?



If your child has specific **talents** which a school offers the DSA-Sec in

And is **passionate** about and **committed** to developing his/her strengths and interests

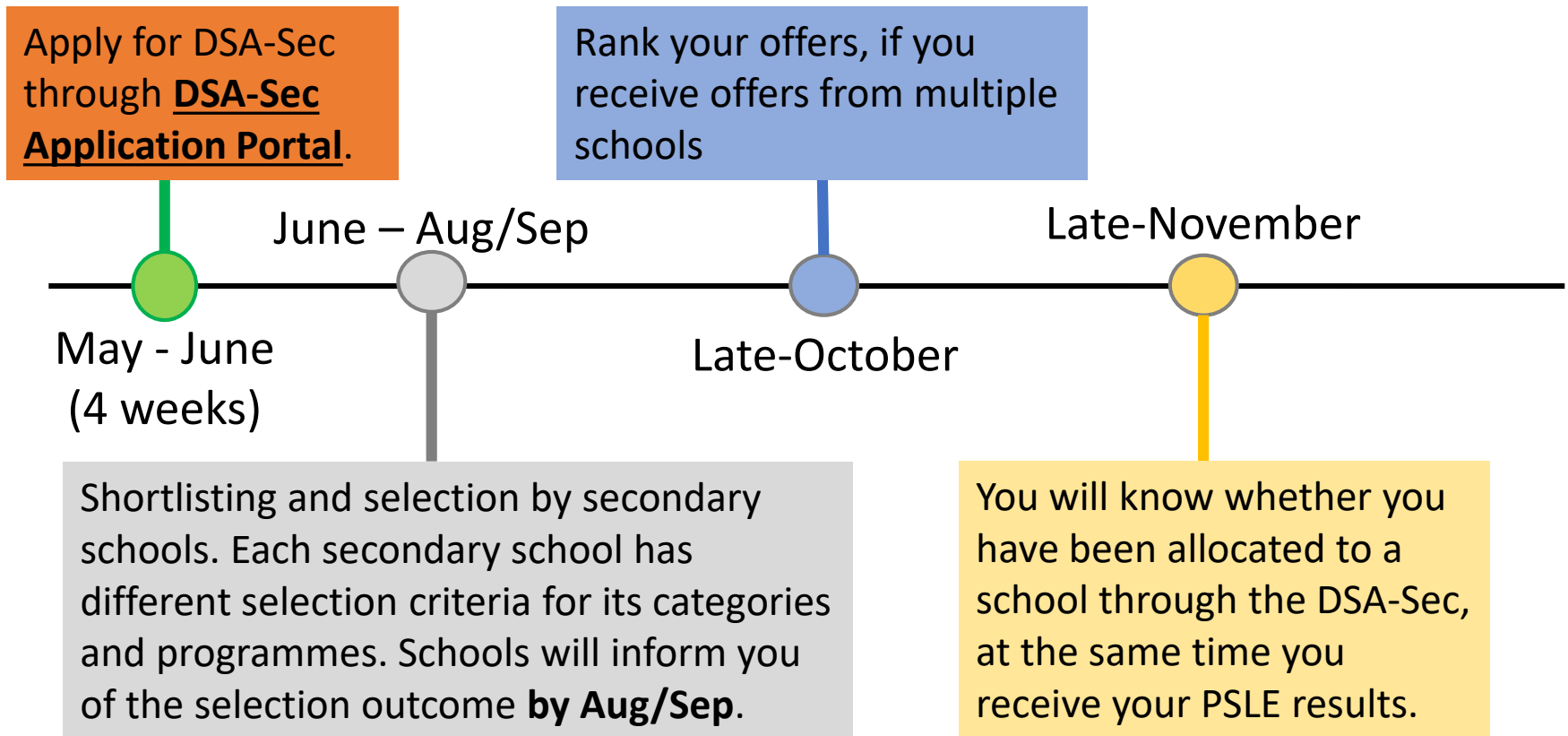
DSA-Sec can support his/her development in that talent area.

Which school should my child apply to?

- Look for a school with **programmes that match your child's strengths and interests**
 - Schools are looking out for students whose interests and talents they can develop further.
 - Learn more about the secondary school's **pace of learning** and overall range of programmes
- **Get the latest information** about what each school offers by:
 - Visiting schools' websites
 - Attending schools' Open Houses to also experience their environments and cultures
 - Visiting the MOE's DSA-Sec website (<https://www.moe.gov.sg/secondary/dsa>)
- Students will apply for DSA through a centralised **DSA-Sec Application Portal**, using a common application form.



Estimated timeline for DSA-Sec (When your child is in P6)



DSA-Sec Application Portal

- Students will be able to apply for DSA through a centralised **DSA-Sec Application Portal**, using a common application form.
- The portal simplifies and streamlines the DSA application process, making it convenient for all students.
- No fees charged for DSA-Sec application and selection.
- You can indicate up to three choices. For each choice, you will need to choose a secondary school and a talent area from that school.
- You do **not** need to submit testimonials or hardcopy documents to the secondary school during application.
- Of the three choices, up to two choices may be used to apply to the same school, for two different talent areas of that school. This is to cater to your child's multiple interests, and allow your child to choose different schools which can develop his/her strengths and interests.
- You and your child are encouraged to consider your choices carefully, and manage the time and effort participating in multiple trials and interviews.



Examples of Possible Choice Combinations

EXAMPLE 1	Talent(s)	School(s)	Your child can apply to <u>up to three different schools</u> , with no restrictions on the talent areas.
	Choir	School A	
	Choir	School B	
	Choir	School C	
EXAMPLE 2	Talent(s)	School(s)	If your child chooses two areas in one school, he/she can apply to two different schools only ,
	Choir	School A	
	String Orchestra	School A	
	Choir	School B	
EXAMPLE 3 (Not allowed)	Talent(s)	School(s)	Your child cannot use all three choices on one school. He/she can leave the third choice blank or choose another school.
	Choir	School A	
	String Orchestra	School A	
	Mathematics	School A	



What are schools looking for?

- The selection process differs across schools, and across different DSA-Sec categories.
- Generally, schools are looking for candidates with:

Talent, passion, commitment

- Schools may look at **achievements** and **participation** (e.g. in Junior Sports Academy).
- Schools may also conduct tests, trials or selection camps to identify students with **strengths, or sound fundamentals and potential**, in particular areas.

Strong personal qualities

- Schools may look at CCA records and VIA participation.
- Schools may also conduct interviews.

Good academic fit

- Schools may look at primary school results to ensure students can benefit from the school's pace of learning.

*Students, be sincere, be genuine, and **be yourself** – if you are a good fit for the school, it **will** show.*



What are the possible DSA-Sec outcomes?

- **Confirmed Offer (CO)** → Your child has a place reserved in the school, as long as his/her PSLE results qualify him/her for a course the school offers (i.e. Express, Normal (Academic) or Normal (Technical)).
- **Wait List (WL)** → Your child will be given a place in the school if other students with Confirmed Offers do not take up those offers, and if his/her PSLE results qualify him/her for a course the school offers. Allocation will be based on students' rank on the school's Wait List.
- **Unsuccessful** → Your child has not been given a place in the school. If your child still wishes to enter the schools he/she applied for, he/she can apply through the S1 Posting process using his/her PSLE results.



If my child has a DSA-Sec Confirmed Offer, does it mean that his/her PSLE results will not matter?

- Your child's PSLE results will still be **used to determine the secondary school course he/she is eligible** for (i.e. Express, Normal (Academic), Normal (Technical))
- Even if he/she has a Confirmed Offer, he/she **must qualify for a course offered by the school** to be admitted to the DSA-Sec school.

Example: Leo has a Confirmed Offer from Courage Secondary, which offers the Express Course only. However, Leo's PSLE results qualify him for the Normal (Academic) course. Hence, Leo will not be able to go to Courage Secondary through DSA-Sec. If he is not allocated a place in another DSA-Sec school whose CO/WL offer he had accepted at the School Preference stage, he will participate in the S1 Posting.



Home-School Partnership

- Supporting your child in his/her learning



A Gracious Community of Confident and Innovative Life-long Learners
Igniting the Joy of Learning, Inspiring all to Care and Share



PARENTS' SUPPORT

- Support and partnership of parents are crucial in realising these changes.
- Parents can play a part to encourage Joy of Learning, and Learn for Life.



'PRAISE'

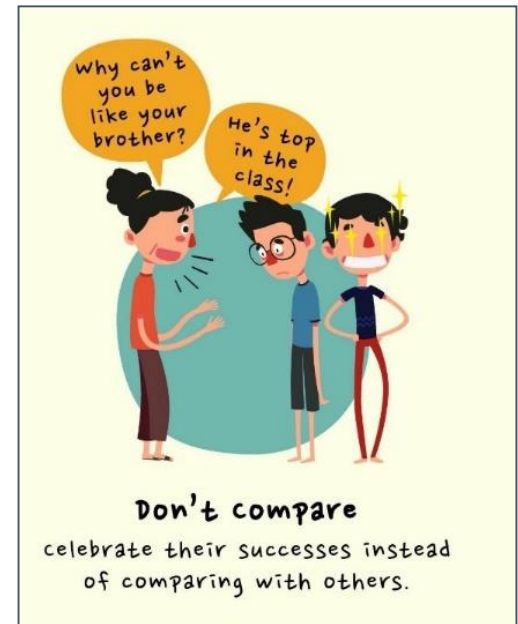
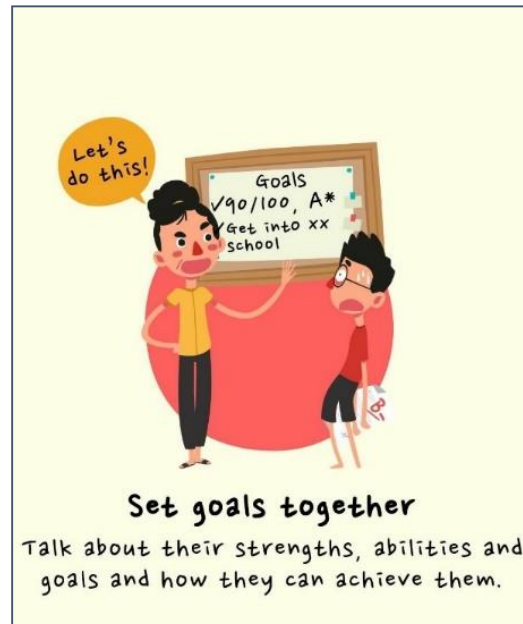
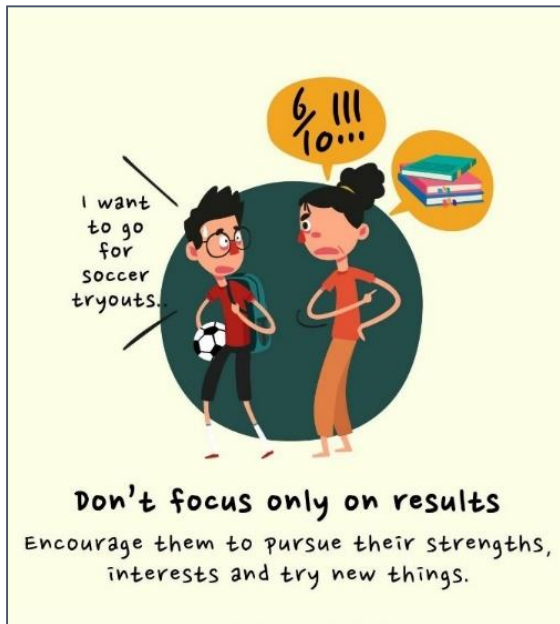
- **PaRticipate** in School Events – Briefings, PTM/PCTC
- **A**ctive involvement in child's learning – give space and time for holistic development and to deepen learning
- **I**nculcate and nurture **good habits** – management of time, completion of homework, consistent work, packing of bag daily, coming to school regularly and **punctually**
- **S**upervise learning at home and monitor child's activities after school, especially time on online activities
- **E**ncourage, have confidence in your child and trust the school – **Affirm small progress**, use the power of 'Yet' and **work closely with teachers**



ENCOURAGE JOY OF LEARNING!

Encourage Joy of Learning by

- not over-emphasising academic performance
- focus on your child's learning journey, rather than compare them to others



GIVE OUR CHILDREN THE TIME AND SPACE TO DEEPEN LEARNING

I'M NOT WASTING TIME...




...I'M PLANNING MY FIRST NOVEL!

Learning happens in different ways.

Ministry of Education Singapore

I'M NOT DISTRACTED...



...I'M LEARNING HOW PLANES FLY!

Learning happens in different ways.

Ministry of Education Singapore

I'M NOT IDLE...



...I'M DESIGNING A FUTURE CITY!

Learning happens in different ways.

Ministry of Education Singapore





Question & Answer



Feedback on the Session

We appreciate it if you could spend the next few minutes to give us feedback on the session. Please access the link or scan the QR code below.



<https://go.gov.sg/pmp5parents>



A Gracious Community of Confident and Innovative Life-long Learners
Igniting the Joy of Learning, Inspiring all to Care and Share



The Singapore Kindergarten Impact Project (SKIP)

- The Singapore Kindergarten Impact Project (**SKIP**) commenced by NIE in 2015 with the goal of understanding how the pre-school environment influences children as they progress from Kindergarten 1 (K1) to Primary 1.
- This year, NIE will launch a **SKIP-UP** study to follow up on these children and their classmates who are now in Primary 5. This study will enable researchers from NIE to understand longitudinal child development in Singapore.
- The details of the study will be shared through this video.



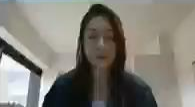
SKIP Video



An Institute of



-- Follow-Up Study, 2021



A Gracious Community of Confident and Innovative Life-long Learners
Igniting the Joy of Learning, Inspiring all to Care and Share



Thank You



PPS School Motto
Pride in Performance

OUR MISSION

Igniting the joy of Learning,
Inspiring all to care and share

OUR VISION

A Gracious Community of Confident
and Innovative Life-Long Learners



A Gracious Community of Confident and Innovative Life-long Learners
Igniting the Joy of Learning, Inspiring all to Care and Share

