

Pacesetter
BES Lettering
Installation Guide

Copyright

© Copyright 2011 Pulse Microsystems Ltd. All rights reserved.

This Installation Guide is copyrighted by the developer of the software, Pulse Microsystems Ltd. All rights reserved. US Patent Nos. 5 270 939; 5 343 401; 5 430 658; 5 506 784; 5 510 994; 5 541 847; 5 668 730; 5 771 173; 5 809 921; 6 196 146; 6 216 618; 6 390 005; 6 968 255. European Patent Nos. 0545773. Other patents pending.

Information in this document is subject to change without notice.

The software described in this document is furnished under a license agreement and/or nondisclosure agreement. The software may be used or copied only in accordance with the terms of those agreements. No part of this publication and the software may be copied, photocopied, reproduced, translated, or reduced to any electronic medium or machine-readable form without the manufacturer's written permission.

Commercial or industrial use of trademark and copyrighted works (For example, books, paintings, drawings, photos, fanciful characters, and so forth) owned by other companies or persons, for creation of embroidery patterns without permission is illegal and may result in either criminal or civil liability.

Microsoft®, Windows® XP, Windows® Vista, and Windows® 7 are registered trademarks of Microsoft Corporation. All other product names are copyrighted and registered trademarks or trademarks of their respective holders. All computer and software names identified by TM or tm are trademarks of their respective manufacturers.

Installing the Software

Welcome to the Pacesetter BES Lettering system for embroidery machines.

This Installation Guide gives you some basic information about Pacesetter BES Lettering (such as the minimum systems requirements) and also instructions on how to install and activate the program.

System Requirements



Specifications are subject to change without prior notice. For additional information on setup and system requirements, contact your distributor.

Recommended System Requirements:

- Genuine Intel Pentium IV, 2GHz PC computer (or higher) with a CD-ROM drive
- Monitor 1024x768 video resolution with 16-bit color display (or higher)
- Microsoft® Windows® XP/Vista operating system
- 1 gigabyte of RAM
- Minimum 1 gigabyte hard disk drive space available
- Mouse

For assistance, please contact Brother Customer service: either by telephone at 1-877-276-8437, or by email at custsrv@brother.com.

The Software Activation Number

In your Pacesetter Embroidery Lettering Software package, you will have been given a software activation serial number. Use this number to activate your software once it is installed.

Please note that, while this is a single user license, but it does allow you to activate the software on two computers that you own and operate.

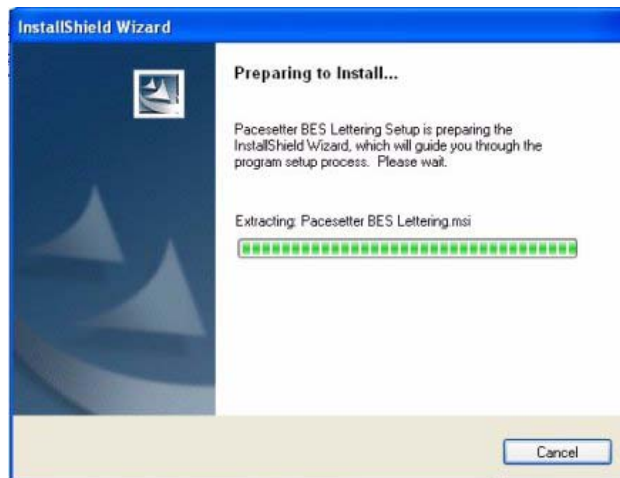
Installing Pacesetter BES Lettering



You must be running Windows® XP/Vista/7 to install Pacesetter BES Lettering.

To install Pacesetter BES Lettering:

- 1 Insert the Pacesetter BES Lettering CD-ROM into the computer's CD drive.
- 2 Wait for the AutoRun Screen.
- 3 Click on "Install Pacesetter BES Lettering."
You see the InstallShield introductory screen.



- 4 Click Next to proceed with the installation.
You see the License Agreement dialog.
- 5 Check the radio button next to "I accept the terms in the license agreement" and click next to continue.
- 6 Follow the instructions on each screen; the InstallShield Wizard will then Install the software on your computer.
The Pacesetter BES Lettering icon  will now appear on your desktop.

Activating Pacesetter BES Lettering

In order to use the Pacesetter BES Lettering software (once it is installed), you must Activate it first. The activation Wizard will quickly and easily lead you through this activation process. You can choose one of the following options to obtain a license:

- Using an activation serial number (requires Internet connection).
- By obtaining a site key from Technical Support (for computers without a connection to the Internet).

Activating Pacesetter BES Lettering via the Internet

If the computer on which you are installing Pacesetter BES Lettering has an Internet connection, all you need for your activation is the activation serial number that came with your copy of the software.

To obtain an activation over the Internet:

- 1 Do one of the following:
 - ♦ Double-click the Pacesetter BES Lettering Icon on your desktop.
 - ♦ Choose Start—All Programs—Pacesetter—Pacesetter BES Lettering.

You see the activation screen.

Activation

Name*:

Address*:

City*:

State:

Postal Code*:

Country*:

Email*:

Phone*:

Fax:

Company:

* Field is required to continue

Product:

Activation Serial Number:

Activate Now! Close

- 2 Fill in the required activation information in the appropriate fields.



Fields marked with an asterisk (*) are required - your software will not be activated otherwise.

- 3 Type your individual activation serial number (that came with your copy of Pacesetter BES Lettering) into the Activation Serial Number field.
- 4 Click the Activate Now button on the dialog.
Pacesetter BES Lettering will open.

Activating Pacesetter BES Lettering without an Internet Connection

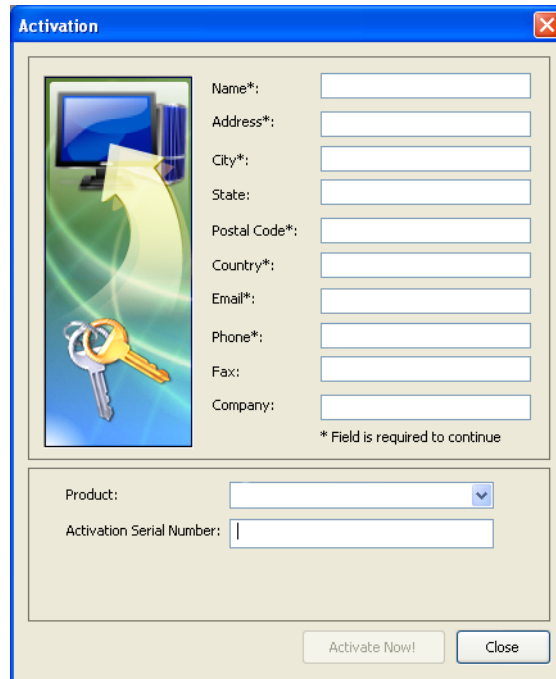
If you have installed the software on a computer that does not have an Internet connection, you will need a site key (in addition to the activation serial number) to complete the activation.

To obtain your activation code, please contact technical support; either by telephone at 1-877-276-8437, or by email at custsrv@brother.com.

To obtain an activation without an internet connection:

- 1 Do one of the following:
 - ◆ Double-click the Pacesetter BES Lettering Icon on your desktop.
 - ◆ Choose Start—All Programs—Pacesetter—Pacesetter BES Lettering.

You see the activation screen.



The image shows a Windows-style dialog box titled "Activation". On the left side, there is a graphic of a computer monitor and a key with a yellow arrow pointing towards it. To the right of this graphic are several text input fields, each with an asterisk (*) indicating it is required. The fields are: Name*, Address*, City*, State, Postal Code*, Country*, Email*, Phone*, Fax, and Company. Below these fields is a note: "* Field is required to continue". At the bottom of the dialog, there are two buttons: "Activate Now!" and "Close".

Name*	<input type="text"/>
Address*	<input type="text"/>
City*	<input type="text"/>
State	<input type="text"/>
Postal Code*	<input type="text"/>
Country*	<input type="text"/>
Email*	<input type="text"/>
Phone*	<input type="text"/>
Fax	<input type="text"/>
Company	<input type="text"/>

* Field is required to continue

Product:

Activation Serial Number:

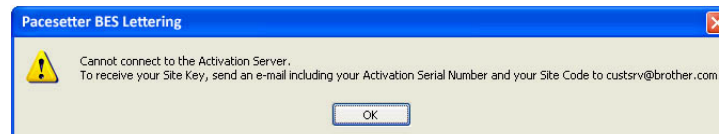
Activate Now! Close

- 2 Fill in the required activation information in the appropriate fields.



Fields marked with an asterisk (*) are required - your software will not be activated otherwise.

- 3 Type your individual activation serial number (that came with your copy of Pacesetter BES Lettering) into the serial number field.
- 4 Click the Activate Now button on the dialog.
You see the following warning message:



- 5 Contact Technical support; they will give you an activation code.



You may contact technical support either by telephone at 1-877-276-8437, or by email at custsrv@brother.com.

- 6 Click OK to dismiss the warning message.
The Activation wizard dialog now has new field for the site key.

Activation

Name*:

Address*:

City*:

State:

Postal Code*:

Country*:

Email*:

Phone*:

Fax:

Company:

* Field is required to continue

Product: Pacesetter ELS Lettering

Activation Serial Number:

Site Code:

Site Key:

Activate Now! Close

- 7 Enter the site key.
- 8 Click the Activate Now button.
Pacesetter BES Lettering will open.