

Padlocks

FEATURES	Medeco ³	BiLevel	Medeco X4	CLIQ	Medeco XT	Nexgen
Protector II						
Protector II body accepts 6 pin knob style cylinders	●			●	●	
Protector II is available as key retaining only	●			●	●	
System Series						
System Series body accepts knob style cylinders	●	●	●	●	●	
System Series body accepts large format interchangeable cylinders	●	●		●		
System Series body accepts 6 or 7 pin small format interchangeable cores			●		●	
Non-Key retaining and key retaining models available	●	●	●	●	●	
Hockey Puck						
Hockey Puck body accepts knob style 5 pin cylinder	●	●				
Hockey Puck body accepts knob style 6 pin cylinder			●			
Hockey Puck is available as non- key retaining only	●	●	●		●	
G8R						
G8R body accepts a pop-out cylinder	●			●	●	●
Sold less cylinder	●			●	●	●
All Padlocks						
UL437 Listing & BHMA Certification for high security	●					
Easily integrated into master key systems for key security and convenience	●	●	●			
Patented key control to protect against unauthorized duplication	●	●	●			

Medeco³ Premium High Security

For effective mechanical protection against most forms of attack as well as protection against unauthorized duplicate keys, Medeco³ cylinders are recommended. Security features including hardened steel components, pins that must be elevated, rotated, and interact with both a sidebar and a slider, and additional pick resistant features make Medeco³ the cylinder of choice to protect people, property and information.

Medeco³ BiLevel Patented Key Control

Medeco³ BiLevel cylinders may be incorporated into a master key system with Medeco³ high security, offering protection against all types of attack where needed, and patented key control cylinders for areas requiring less protection. BiLevel cylinders offer patented control against unauthorized duplication of keys without the additional security features protecting against force or surreptitious attack.

Medeco X4 Patented Key Control

Medeco X4 cylinders offer patented control against unauthorized duplication of keys without the additional security features protecting against force or surreptitious attack.

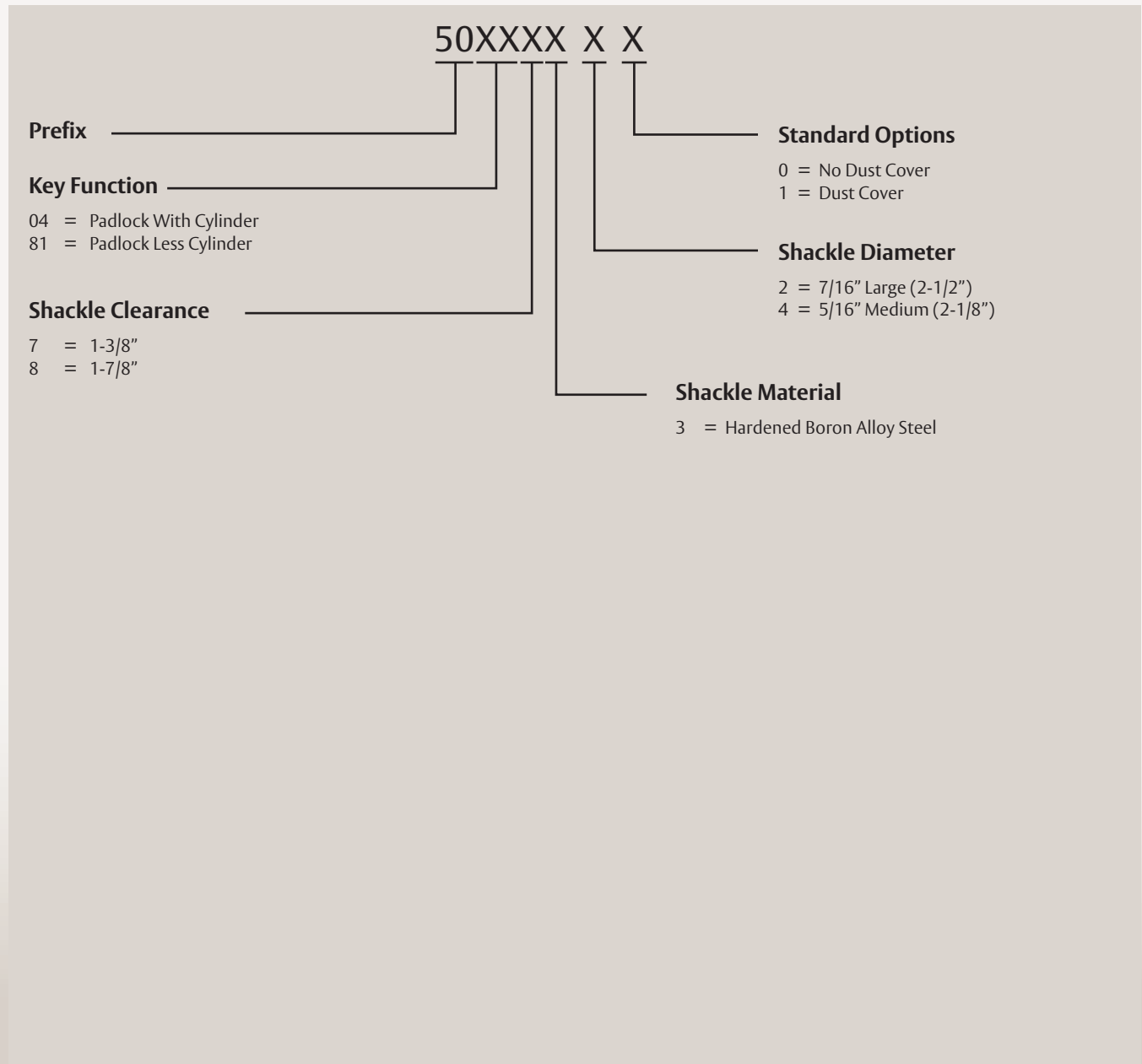
Loss & Liability Control

Many of the cylinders in this section are also available with an eCylinder Loss & Liability Control Solution. See the eCylinder Section for more details.

How to Order The Protector II Padlock:

<p>1</p> <p>50047320 base part #</p> <p>Refer to pages 142-143 for descriptions and technical specifications to find the corresponding base part number.</p>	<p>2</p> <p>T cylinder</p> <p>- = Original T = Medeco³ W = Biaxial S = M³ CLIQ G = Medeco XT</p>	<p>3</p> <p>LT keyway</p> <p>Insert keyway if known or contact Customer Service for help.</p>	<p>4</p> <p>S pinning</p> <table border="1"> <tr> <td style="vertical-align: top;"> <p>S = Sub-Assembled (Uncombined) No additional information needed</p> </td> <td style="vertical-align: top;"> <p>P = Pinned (Combined) Keyed alike (KA) Keyed different (KD) 2 keys per cylinder</p> </td> <td style="vertical-align: top;"> <p>M = Master Keyed Provide specific pinning or contact Customer Service for support Must specify quantity for keys.</p> </td> </tr> </table>	<p>S = Sub-Assembled (Uncombined) No additional information needed</p>	<p>P = Pinned (Combined) Keyed alike (KA) Keyed different (KD) 2 keys per cylinder</p>	<p>M = Master Keyed Provide specific pinning or contact Customer Service for support Must specify quantity for keys.</p>
<p>S = Sub-Assembled (Uncombined) No additional information needed</p>	<p>P = Pinned (Combined) Keyed alike (KA) Keyed different (KD) 2 keys per cylinder</p>	<p>M = Master Keyed Provide specific pinning or contact Customer Service for support Must specify quantity for keys.</p>				

BUILD A SYSTEM SERIES PADLOCK BASE PART



Protector II Series Padlocks

The Protector II Series padlock is made of durable, industrial grade stainless steel and offers excellent resistance to harsh weather and extreme conditions.

The hardened boron alloy steel shackles stand up to physical attack, providing strong resistance against cutting, sawing and prying. The patented Medeco³ mechanical cylinder resists picking, drilling and other sophisticated forms of physical attack. Also available in eCylinder formats for Loss and Liability Control.



Patented Key Control

Protects against unauthorized duplication of your keys.



Special Angled Key Cuts

Requires a special key cutting machine and access to Medeco specific blanks, available in a variety of restrictions to support every need.



Can Be Masterkeyed

Medeco Protector II Padlocks can be masterkeyed into a system containing Medeco³ mechanical as well as M³ CLIQ or XT eCylinders.



Protection From Shackle Attack

Hardened boron alloy steel shackles (5/16" and 7/16" diameters) provide strong resistance against cutting, sawing and prying. Available in both 1 3/8" and 1 7/8" lengths.



Proprietary Deadlocking Shackle

Unique deadlocking shackle locking mechanism for resistance to physical attack.



Weather Resistant

Body made of cast stainless steel to provide excellent resistance in harsh and extreme weather conditions.



Protection From Physical Attack

Medeco³ cylinders are UL 437 listed and resists drilling, picking and other forms of physical attack.



Picking and Bumping Protection

Medeco³ cylinders use a sidebar that prevents the key from rotating until the tumbler pins are elevated, rotated and aligned in the correct position. This feature protects against bumping and picking attacks.

- All Medeco[®] cylinders are constructed of durable machined brass components, designed to last the life of your equipment.
- Patented Medeco³ keys may only be duplicated by Medeco[®] or an authorized Medeco[®] service outlet, and only at your request.
- Boron alloy steel shackle which protects against cutting and pulling attacks.
- Locks can be keyed alike, keyed different, or master keyed depending on your specific needs.

Applications:

The Medeco[®] Protector II padlocks can be used in a variety of different indoor or outdoor applications where high security and key control are a primary concern.

Technical Features:

- Uses key retaining operation.
- Uses a dedicated 6 pin KIK/KIL cylinder that can be pinned to 5.

Warranty:

Warranted for two (2) years against manufacturer's defects. See the Medeco[®] limited warranty for full details.

Finishes:

The padlock comes in a standard industrial stainless steel finish and the cylinders are furnished in the satin brass finish.

Available Key Technologies:

Mechanical:	eCylinder:
– Medeco ³	– M ³ CLIQ
	– Medeco XT

Benefits:

- Hardened stainless steel inserts inside the cylinder provide the ultimate defense against drilling and other forms of physical attack.
- Unique elevating and rotating tumbler pin system is virtually pick proof.

Protector Series II Padlock

Description	Part Number	Price
Large Body - 7/16" dia shackle, Less Cyl, 1 3/8" clearance	50-81732	
Large Body - 7/16" dia shackle, Less Cyl, 1 3/8" clearance, Dust cover	50-817321	
Large Body - 7/16" dia shackle, Less Cyl, 1 7/8" clearance	50-81832	
Large Body - 7/16" dia shackle, Less Cyl, 1 7/8" clearance, Dust cover	50-818321	
Med Body - 5/16" dia shackle, Less Cyl, 1 3/8" clearance	50-81734	
Med Body - 5/16" dia shackle, Less Cyl, 1 3/8" clearance, Dust cover	50-817341	
Med Body - 5/16" dia shackle, Less Cyl, 1 7/8" clearance	50-81834	
Med Body - 5/16" dia shackle, Less Cyl, 1 7/8" clearance, Dust cover	50-818341	
Large Body - 7/16" dia shackle, 1 3/8" clearance	5004732 (P) 5004732 (S)	
Large Body - 7/16" dia shackle, 1 3/8" clearance, Dust cover	50047321 (P) 50047321 (S)	
Large Body - 7/16" dia shackle, 1 7/8" clearance	5004832 (P) 5004832 (S)	
Large Body - 7/16" dia shackle, 1 7/8" clearance, Dust cover	50048321 (P) 50048321 (S)	
Med Body - 5/16" dia shackle, 1 3/8" clearance	5004734 (P) 5004734 (S)	
Med Body - 5/16" dia shackle, 1 3/8" clearance, Dust cover	50047341 (P) 50047341 (S)	
Med Body - 5/16" dia shackle, 1 7/8" clearance	5004834 (P) 5004834 (S)	
Med Body - 5/16" dia shackle, 1 7/8" clearance, Dust cover	50048341 (P) 50048341 (S)	

Protector Series II Padlock Parts

Description	Part Number	Price
Disk For Standard Key In Knob Cylinder	CP-171011	
Disk For CLIQ Cylinder	CP-171021	
Disk For Nexgen Cylinder	CP-171031	

Protector Series II Padlock Cylinder

Description	Part Number	Price
Knob Cylinder	500020	

How to Order System Series Padlocks:

1 5451500 base part # Refer to pages 145-154 for descriptions and technical specifications to find the corresponding base part number.	2 T cylinder - = Original T = Medeco ³ W = BiAxial J = Medeco ³ BiLevel C = Classic CLIQ N = Medeco X4 G = Medeco XT K = Medeco KM	3 06 finish Insert 06 for Satin Brass finish.	4 LT keyway Insert keyway if known or contact Customer Service for help.	5 S pinning <table border="1"> <tr> <td> S = Sub-Assembled (Uncombined) No additional information needed </td> <td> P = Pinned (Combined) Keyed alike (KA) Keyed different (KD) 2 keys per cylinder </td> <td> M = Master Keyed Provide specific pinning or contact Customer Service for support Must specify quantity for keys. </td> </tr> </table>	S = Sub-Assembled (Uncombined) No additional information needed	P = Pinned (Combined) Keyed alike (KA) Keyed different (KD) 2 keys per cylinder	M = Master Keyed Provide specific pinning or contact Customer Service for support Must specify quantity for keys.
S = Sub-Assembled (Uncombined) No additional information needed	P = Pinned (Combined) Keyed alike (KA) Keyed different (KD) 2 keys per cylinder	M = Master Keyed Provide specific pinning or contact Customer Service for support Must specify quantity for keys.					

BUILD A SYSTEM SERIES PADLOCK BASE PART

54XXXX X X	
Prefix	Standard Options Blank = None T = Thick Head (SFIC Only)
Shackle (Diameter), Feature, Clearance 315 = 5/16" Diameter, Weather, 1 1/8" SFIC 31F = 5/16" Diameter, Weather, 2 3/8" SFIC 325 = 5/16" Diameter, Shrouded, 3/4" SFIC 335 = 5/16" Diameter, Weather, 1 1/8" SFIC 7 Pin 33F = 5/16" Diameter, Weather, 2 3/8" SFIC 7 Pin 345 = 5/16" Diameter, Shrouded, 3/4" SFIC 7 Pin 415 = 7/16" Diameter, Weather, 1 3/8" SFIC 41F = 7/16" Diameter, Weather, 1 7/8" SFIC 425 = 7/16" Diameter, Shrouded, 3/4" SFIC 435 = 7/16" Diameter, Weather, 1 3/8" SFIC 7 Pin 43F = 7/16" Diameter, Weather, 1 7/8" SFIC 7 Pin 445 = 7/16" Diameter, Shrouded, 3/4" SFIC 7 Pin 515 = 5/16" Diameter, Weather, 1 1/8" KIK 51F = 5/16" Diameter, Weather, 2 3/8" KIK 525 = 5/16" Diameter, Shrouded, 3/4" KIK 615 = 5/16" Diameter, Weather, 1 1/8" LFIC 61F = 5/16" Diameter, Weather, 2 3/8" LFIC 625 = 5/16" Diameter, Shrouded, 3/4" LFIC 715 = 7/16" Diameter, Weather, 1 3/8" KIK 71F = 7/16" Diameter, Weather, 1 7/8" KIK 725 = 7/16" Diameter, Shrouded, 3/4" KIK 815 = 7/16" Diameter, Weather, 1 3/8" LFIC 81F = 7/16" Diameter, Weather, 1 7/8" LFIC 825 = 7/16" Diameter, Shrouded, 3/4" LFIC	Shackle Material 0 = Boron Alloy Steel 1 = Stainless Steel Key Function 0 = Non-Key Retaining K = Less Cylinder (Key Retaining) L = Less Cylinder (Non-Key Retaining) R = Key Retaining

System Series Padlocks

The Medeco® System Series padlock offers a high security solution for a multitude of applications and are available in two distinctive body styles, an indoor/outdoor weather resistant design or with a shrouded shackle. Both models utilize a boron alloy steel shackle which provides protection to resist cutting and increased tensile strength to resist pulling attacks. The boron alloy steel also ensures that the shackle has an exceptional degree of ductility and is not brittle. The cylinder itself uses hardened, stainless steel inserts to provide the ultimate defense against drilling, pulling and other forms of vandal attack. Patented key programs prevent the unauthorized duplication of keys and maintain system integrity. Medeco's new premium high security padlocks can be keyed alike, keyed differently, or masterkeyed with existing door hardware systems. The Medeco³ unique design provides triple locking action, making the locks virtually pick proof. All Medeco³ keys and locks are protected under patent, trademark, and copyright laws. Medeco³ keys may only be duplicated by Medeco® or by a Medeco® authorized sales outlet, and only at your request.



Patented Key Control

Protects against unauthorized duplication of your keys.



Protection From Physical Attack

Medeco³ padlock cylinders are UL 437 listed and stand up to drilling, picking and other forms of physical attack.



Proprietary Deadlocking Shackle

Boron alloy steel shackles protect against cutting and pulling attacks.



Can Be Masterkeyed

Medeco System Series Padlocks can be masterkeyed into a system containing Medeco BiLevel and Medeco³ mechanical as well as Medeco³ CLIQ eCylinders.



Available in eCylinder

System Series Padlocks are also available with Medeco eCylinders for Loss & Liability control.



Special Angle Cut Keys

Requires a special key cutting machine and access to Medeco specific blanks, available in a variety of restrictions to support every need.



Picking and Bumping Protection

Medeco³ cylinders use a sidebar that prevent the key from rotating until it is elevated, rotated and aligned in the correct position. This feature protects against bumping and picking attacks.

Technical Features:

- Available with either a 5/16 inch or a 7/16 inch shackle diameter.
- Available in Indoor/Outdoor weather resistant design or with a shrouded shackle.
- Extended shackles available for Indoor/Outdoor padlocks only.
- The shrouded shackle design provides extra shackle protection against cutting attacks.
- All Medeco® cylinders are constructed of durable machined brass components, designed to last the life of your equipment.
- Boron alloy steel shackle which protects against cutting and pulling attacks.
- Available in a variety of different shackle lengths.

Applications:

Used in a variety of different indoor or outdoor applications where high security and key control are a primary concern.

Warranty:

Warranted for two (2) years against manufacturer's defects. See the Medeco® limited warranty for full details.

Finishes:

The padlock comes in a standard black body cover and the cylinders are furnished in the satin brass finish.

Available Key Technologies:

Mechanical:

- Medeco³
- Medeco³ BiLevel
- Medeco X4

eCylinder:

- M³ CLIQ
- Classic CLIQ
- Medeco XT
- Medeco X4 CLIQ

Indoor/Outdoor Padlock, 5/16" Shackle -KIK

Description	Part Number	Medeco ³	BiLevel	Medeco X4	eCylinder
Indoor/Outdoor Padlock, Non-Key Retaining, 1 1/8" Shackle Clearance, With Cylinder	5451500 (P)				●
	5451500 (S)				
Indoor/Outdoor Padlock, Key Retaining, 1 1/8" Shackle Clearance, With Cylinder	54515R0 (P)				●
	54515R0 (S)				
Indoor/Outdoor Padlock, Non-Key Retaining, 2 3/8" Shackle Clearance, With Cylinder	5451F00 (P)				●
	5451F00 (S)				
Indoor/Outdoor Padlock, Key Retaining, 2 3/8" Shackle Clearance, With Cylinder	5451FR0 (P)				●
	5451FR0 (S)				
Indoor/Outdoor Padlock, Key Retaining, 1 1/8" Shackle Clearance, Less Cylinder	54515K0				
Indoor/Outdoor Padlock, Non-Key Retaining, 1 1/8" Shackle Clearance, Less Cylinder	54515L0				
Indoor/Outdoor Padlock, Key Retaining, 2 3/8" Shackle Clearance, Less Cylinder	5451FK0				
Indoor/Outdoor Padlock, Non-Key Retaining, 2 3/8" Shackle Clearance, Less Cylinder	5451FL0				

Indoor/Outdoor Padlock, 5/16" Shackle -6 Pin LFIC

Description	Part Number	Medeco ³	BiLevel	Medeco X4	eCylinder
Indoor/Outdoor Padlock, Non-Key Retaining, 1 1/8" Shackle Clearance, With Cylinder	5461500 (P)				
	5461500 (S)				
Indoor/Outdoor Padlock, Key Retaining, 1 1/8" Shackle Clearance, With Cylinder	54615R0 (P)				
	54615R0 (S)				
Indoor/Outdoor Padlock, Non-Key Retaining, 2 3/8" Shackle Clearance, With Cylinder	5461F00 (P)				
	5461F00 (S)				
Indoor/Outdoor Padlock, Key Retaining, 2 3/8" Shackle Clearance, With Cylinder	5461FR0 (P)				
	5461FR0 (S)				
Indoor/Outdoor Padlock, Key Retaining, 1 1/8" Shackle Clearance, Less Cylinder	54615K0				
Indoor/Outdoor Padlock, Non-Key Retaining, 1 1/8" Shackle Clearance, Less Cylinder	54615L0				
Indoor/Outdoor Padlock, Key Retaining, 2 3/8" Shackle Clearance, Less Cylinder	5461FK0				
Indoor/Outdoor Padlock, Non-Key Retaining, 2 3/8" Shackle Clearance, Less Cylinder	5461FL0				

For pricing of expired patent technologies (Original, Biaxial, KeyMark) please refer to the spreadsheet on the partner section of www.medeco.com.

**Refer to the eCylinder section for more detail on specific technologies available and pricing. Technologies are represented by the following letters:

T = Medeco³, S = M³ CLIQ, J = Medeco³ BiLevel, W = Biaxial, V = Medeco Biaxial CLIQ, K = Medeco KM, N = Medeco X4, C = Classic CLIQ, M = Medeco X4 CLIQ, ". " = Original, Z = Medeco Original KW CLIQ, G = Medeco XT ***See key section for surcharges for custom coined cut keys or special stamping requirements.

Note: (P) refers to **Pinned** and (S) to **Sub-Pinned** at the end of each part string in the price book.

Indoor/Outdoor Padlock, 5/16" Shackle -6 Pin SFIC

Description	Part Number	Medeco ³	BiLevel	Medeco X4	eCylinder
Indoor/Outdoor Padlock, Non-Key Retaining, 1 1/8" Shackle Clearance, With Cylinder	5431500 (P)				
	5431500 (S)				
Indoor/Outdoor Padlock, Key Retaining, 1 1/8" Shackle Clearance, With Cylinder	54315R0 (P)				
	54315R0 (S)				
Indoor/Outdoor Padlock, Non-Key Retaining, 2 3/8" Shackle Clearance, With Cylinder	5431F00 (P)				
	5431F00 (S)				
Indoor/Outdoor Padlock, Key Retaining, 2 3/8" Shackle Clearance, With Cylinder	5431FR0 (P)				
	5431FR0 (S)				

Indoor/Outdoor Padlock, 5/16" Shackle -7 Pin SFIC

Description	Part Number	Medeco ³	BiLevel	Medeco X4	eCylinder
Indoor/Outdoor Padlock, Non-Key Retaining, 1 1/8" Shackle Clearance, With Cylinder	5433500 (P)				
	5433500 (S)				
Indoor/Outdoor Padlock, Key Retaining, 1 1/8" Shackle Clearance, With Cylinder	54335R0 (P)				
	54335R0 (S)				
Indoor/Outdoor Padlock, Non-Key Retaining, 2 3/8" Shackle Clearance, With Cylinder	5433F00 (P)				
	5433F00 (S)				
Indoor/Outdoor Padlock, Key Retaining, 2 3/8" Shackle Clearance, With Cylinder	5433FR0 (P)				
	5433FR0 (S)				

Indoor/Outdoor Padlock, 5/16" Shackle -Less SFIC

Description	Part Number	Price
Indoor/Outdoor Padlock, Key Retaining, 1 1/8" Shackle Clearance, Less Cylinder	54315K0	
Indoor/Outdoor Padlock, Non-Key Retaining, 1 1/8" Shackle Clearance, Less Cylinder	54315L0	
Indoor/Outdoor Padlock, Key Retaining, 2 3/8" Shackle Clearance, Less Cylinder	5431FK0	
Indoor/Outdoor Padlock, Non-Key Retaining, 2 3/8" Shackle Clearance, Less Cylinder	5431FL0	

For pricing of expired patent technologies (Original, Biaxial, KeyMark) please refer to the spreadsheet on the partner section of www.medeco.com.

**Refer to the eCylinder section for more detail on specific technologies available and pricing. Technologies are represented by the following letters:

T = Medeco³, S = M³ CLIQ, J = Medeco³ BiLevel, W = Biaxial, V = Medeco Biaxial CLIQ, K = Medeco KM, N = Medeco X4, C = Classic CLIQ, M = Medeco X4 CLIQ, ". " = Original, Z = Medeco Original KW CLIQ, G = Medeco XT ***See key section for surcharges for custom coined cut keys or special stamping requirements.

Note: (P) refers to **Pinned** and (S) to **Sub-Pinned** at the end of each part string in the price book.

Indoor/Outdoor Padlock, 7/16" Shackle -KIK

Description	Part Number	Medeco ³	BiLevel	Medeco X4	eCylinder
Indoor/Outdoor Padlock, Non-Key Retaining, 1 3/8" Shackle Clearance, With Cylinder	5471500 (P)				●
	5471500 (S)				
Indoor/Outdoor Padlock, Key Retaining, 1 3/8" Shackle Clearance, With Cylinder	54715R0 (P)				●
	54715R0 (S)				
Indoor/Outdoor Padlock, Non-Key Retaining, 1 7/8" Shackle Clearance, With Cylinder	5471F00 (P)				●
	5471F00 (S)				
Indoor/Outdoor Padlock, Key Retaining, 1 7/8" Shackle Clearance, With Cylinder	5471FR0 (P)				●
	5471FR0 (S)				
Indoor/Outdoor Padlock, Key Retaining, 1 3/8" Shackle Clearance, Less Cylinder	54715K0				
Indoor/Outdoor Padlock, Non-Key Retaining, 1 3/8" Shackle Clearance, Less Cylinder	54715L0				
Indoor/Outdoor Padlock, Key Retaining, 1 7/8" Shackle Clearance, Less Cylinder	5471FK0				
Indoor/Outdoor Padlock, Non-Key Retaining, 1 7/8" Shackle Clearance, Less Cylinder	5471FL0				

Indoor/Outdoor Padlock, 7/16" Shackle -6 Pin LFIC

Description	Part Number	Medeco ³	BiLevel	Medeco X4	eCylinder
Indoor/Outdoor Padlock, Non-Key Retaining, 1 3/8" Shackle Clearance, With Cylinder	5481500 (P)				
	5481500 (S)				
Indoor/Outdoor Padlock, Key Retaining, 1 3/8" Shackle Clearance, With Cylinder	54815R0 (P)				
	54815R0 (S)				
Indoor/Outdoor Padlock, Non-Key Retaining, 1 7/8" Shackle Clearance, With Cylinder	5481F00 (P)				
	5481F00 (S)				
Indoor/Outdoor Padlock, Key Retaining, 1 7/8" Shackle Clearance, With Cylinder	5481FR0 (P)				
	5481FR0 (S)				
Indoor/Outdoor Padlock, Key Retaining, 1 3/8" Shackle Clearance, Less Cylinder	54815K0				
Indoor/Outdoor Padlock, Non-Key Retaining, 1 3/8" Shackle Clearance, Less Cylinder	54815L0				
Indoor/Outdoor Padlock, Key Retaining, 1 7/8" Shackle Clearance, Less Cylinder	5481FK0				
Indoor/Outdoor Padlock, Non-Key Retaining, 1 7/8" Shackle Clearance, Less Cylinder	5481FL0				

For pricing of expired patent technologies (Original, Biaxial, KeyMark) please refer to the spreadsheet on the partner section of www.medeco.com.

**Refer to the eCylinder section for more detail on specific technologies available and pricing. Technologies are represented by the following letters:

T = Medeco³, S = M³ CLIQ, J = Medeco³ BiLevel, W = Biaxial, V = Medeco Biaxial CLIQ, K = Medeco KM, N = Medeco X4, C = Classic CLIQ, M = Medeco X4 CLIQ, ". " = Original, Z = Medeco Original KW CLIQ, G = Medeco XT ***See key section for surcharges for custom coined cut keys or special stamping requirements.

Note: (P) refers to **Pinned** and (S) to **Sub-Pinned** at the end of each part string in the price book.

Indoor/Outdoor Padlock, 7/16" Shackle - 6 Pin SFIC

Description	Part Number	Medeco ³	BiLevel	Medeco X4	eCylinder
Indoor/Outdoor Padlock, Non-Key Retaining, 1 3/8" Shackle Clearance, With Cylinder	5441500 (P)				
	5441500 (S)				
Indoor/Outdoor Padlock, Key Retaining, 1 3/8" Shackle Clearance, With Cylinder	54415R0 (P)				
	54415R0 (S)				
Indoor/Outdoor Padlock, Non-Key Retaining, 1 7/8" Shackle Clearance, With Cylinder	5441F00 (P)				
	5441F00 (S)				
Indoor/Outdoor Padlock, Key Retaining, 1 7/8" Shackle Clearance, With Cylinder	5441FR0 (P)				
	5441FR0 (S)				

Indoor/Outdoor Padlock, 7/16" Shackle - 7 Pin SFIC

Description	Part Number	Medeco ³	BiLevel	Medeco X4	eCylinder
Indoor/Outdoor Padlock, Non-Key Retaining, 1 3/8" Shackle Clearance With Cylinder	5443500 (P)				
	5443500 (S)				
Indoor/Outdoor Padlock, Key Retaining, 1 3/8" Shackle Clearance, With Cylinder	54435R0 (P)				
	54435R0 (S)				
Indoor/Outdoor Padlock, Non-Key Retaining, 1 7/8" Shackle Clearance, With Cylinder	5443F00 (P)				
	5443F00 (S)				
Indoor/Outdoor Padlock, Key Retaining, 1 7/8" Shackle Clearance, With Cylinder	5443FR0 (P)				
	5443FR0 (S)				

Indoor/Outdoor Padlock, 7/16" Shackle - Less SFIC

Description	Part Number	Medeco ³	BiLevel	Medeco X4	eCylinder
Indoor/Outdoor Padlock, Key Retaining, 1 3/8" Shackle Clearance, Less Cylinder	54415K0				
Indoor/Outdoor Padlock, Non-Key Retaining, 1 3/8" Shackle Clearance, Less Cylinder	54415L0				
Indoor/Outdoor Padlock, Key Retaining, 1 7/8" Shackle Clearance, Less Cylinder	5441FK0				
Indoor/Outdoor Padlock, Non-Key Retaining, 1 7/8" Shackle Clearance, Less Cylinder	5441FL0				

Shrouded Padlock, 5/16" Shackle - KIK

Description	Part Number	Medeco ³	BiLevel	Medeco X4	eCylinder
Shrouded Padlock, Non-Key Retaining, 3/4" Shackle Clearance, With Cylinder	5452500 (P)				
	5452500 (S)				
Shrouded Padlock, Key Retaining, 3/4" Shackle Clearance, With Cylinder	54525R0 (P)				
	54525R0 (S)				
Shrouded Padlock, Key Retaining, 3/4" Shackle Clearance, Less Cylinder	54525K0				
Shrouded Padlock, Non-Key Retaining, 3/4" Shackle Clearance, Less Cylinder	54525L0				

For pricing of expired patent technologies (Original, Biaxial, KeyMark) please refer to the spreadsheet on the partner section of www.medeco.com.

**Refer to the eCylinder section for more detail on specific technologies available and pricing. Technologies are represented by the following letters:

T = Medeco³, S = M³ CLIQ, J = Medeco³ BiLevel, W = Biaxial, V = Medeco Biaxial CLIQ, K = Medeco KM, N = Medeco X4, C = Classic CLIQ, M = Medeco X4 CLIQ, ". " = Original, Z = Medeco Original KW CLIQ, G = Medeco XT ***See key section for surcharges for custom coined cut keys or special stamping requirements.

Note: (P) refers to **Pinned** and (S) to **Sub-Pinned** at the end of each part string in the price book.

Shrouded Padlock, 5/16" Shackle - 6 Pin LFIC

Description	Part Number	Medeco ³	BiLevel	Medeco X4	eCylinder
Shrouded Padlock, Non-Key Retaining, 3/4" Shackle Clearance, With Cylinder	5462500 (P)				
	5462500 (S)				
Shrouded Padlock, Key Retaining, 3/4" Shackle Clearance, With Cylinder	54625R0 (P)				
	54625R0 (S)				
Shrouded Padlock, Key Retaining, 3/4" Shackle Clearance, Less Cylinder	54625K0				
Shrouded Padlock, Non-Key Retaining, 3/4" Shackle Clearance, Less Cylinder	54625L0				

Shrouded Padlock, 5/16" Shackle - 6 Pin SFIC

Description	Part Number	Medeco ³	BiLevel	Medeco X4	eCylinder
Shrouded Padlock, Non-Key Retaining, 3/4" Shackle Clearance, With Cylinder	5432500 (P)				
	5432500 (S)				
Shrouded Padlock, Key Retaining, 3/4" Shackle Clearance, With Cylinder	54325R0 (P)				
	54325R0 (S)				

Shrouded Padlock, 5/16" Shackle - 7 Pin SFIC

Description	Part Number	Medeco ³	BiLevel	Medeco X4	eCylinder
Shrouded Padlock, Non-Key Retaining, 3/4" Shackle Clearance, With Cylinder	5434500 (P)				
	5434500 (S)				
Shrouded Padlock, Key Retaining, 3/4" Shackle Clearance, With Cylinder	54345R0 (P)				
	54345R0 (S)				

Shrouded Padlock, 5/16" Shackle - Less SFIC

Description	Part Number	Medeco ³	BiLevel	Medeco X4	eCylinder
Shrouded Padlock, Key Retaining, 3/4" Shackle Clearance, Less Cylinder	54325K0				
Shrouded Padlock, Non-Key Retaining, 3/4" Shackle Clearance, Less Cylinder	54325L0				

For pricing of expired patent technologies (Original, Biaxial, KeyMark) please refer to the spreadsheet on the partner section of www.medeco.com.

**Refer to the eCylinder section for more detail on specific technologies available and pricing. Technologies are represented by the following letters:

T = Medeco³, S = M³ CLIQ, J = Medeco³ BiLevel, W = Biaxial, V = Medeco Biaxial CLIQ, K = Medeco KM, N = Medeco X4, C = Classic CLIQ, M = Medeco X4 CLIQ, ". ." = Original, Z = Medeco Original KW CLIQ, G = Medeco XT ***See key section for surcharges for custom coined cut keys or special stamping requirements.

Note: (P) refers to **Pinned** and (S) to **Sub-Pinned** at the end of each part string in the price book.

Shrouded Padlock, 7/16" Shackle - KIK

Description	Part Number	Medeco ³	BiLevel	Medeco X4	eCylinder
Shrouded Padlock, Non-Key Retaining, 3/4" Shackle Clearance, With Cylinder	5472500 (P)				●
	5472500 (S)				
Shrouded Padlock, Key Retaining, 3/4" Shackle Clearance, With Cylinder	54725R0 (P)				●
	54725R0 (S)				
Shrouded Padlock, Key Retaining, 3/4" Shackle Clearance, Less Cylinder	54725K0				
Shrouded Padlock, Non-Key Retaining, 3/4" Shackle Clearance, Less Cylinder	54725L0				

Shrouded Padlock, 7/16" Shackle - 6 Pin LFIC

Description	Part Number	Medeco ³	BiLevel	Medeco X4	eCylinder
Shrouded Padlock, Non-Key Retaining, 3/4" Shackle Clearance, With Cylinder	5482500 (P)				
	5482500 (S)				
Shrouded Padlock, Key Retaining, 3/4" Shackle Clearance, With Cylinder	54825R0 (P)				
	54825R0 (S)				
Shrouded Padlock, Key Retaining, 3/4" Shackle Clearance, Less Cylinder	54825K0				
Shrouded Padlock, Non-Key Retaining, 3/4" Shackle Clearance, Less Cylinder	54825L0				

Shrouded Padlock, 7/16" Shackle - 6 Pin SFIC

Description	Part Number	Medeco ³	BiLevel	Medeco X4	eCylinder
Shrouded Padlock, Non-Key Retaining, 3/4" Shackle Clearance, With Cylinder	5442500 (P)				
	5442500 (S)				
Shrouded Padlock, Key Retaining, 3/4" Shackle Clearance, With Cylinder	54425R0 (P)				
	54425R0 (S)				

Shrouded Padlock, 7/16" Shackle - 6 Pin SFIC

Description	Part Number	Medeco ³	BiLevel	Medeco X4	eCylinder
Shrouded Padlock, Non-Key Retaining, 3/4" Shackle Clearance, With Cylinder	5444500 (P)				
	5444500 (S)				
Shrouded Padlock, Key Retaining, 3/4" Shackle Clearance, With Cylinder	54445R0 (P)				
	54445R0 (S)				

For pricing of expired patent technologies (Original, Biaxial, KeyMark) please refer to the spreadsheet on the partner section of www.medeco.com.

**Refer to the eCylinder section for more detail on specific technologies available and pricing. Technologies are represented by the following letters:

T = Medeco³, S = M³ CLIQ, J = Medeco³ BiLevel, W = Biaxial, V = Medeco Biaxial CLIQ, K = Medeco KM, N = Medeco X4, C = Classic CLIQ, M = Medeco X4 CLIQ, ". " = Original, Z = Medeco Original KW CLIQ, G = Medeco XT ***See key section for surcharges for custom coined cut keys or special stamping requirements.

Note: (P) refers to **Pinned** and (S) to **Sub-Pinned** at the end of each part string in the price book.

Shrouded Padlock, 7/16" Shackle - Less SFIC

Description	Part Number	Medeco ³	BiLevel	Medeco X4	eCylinder
Shrouded Padlock, Key Retaining, 3/4" Shackle Clearance, Less Cylinder	54425K0				
Shrouded Padlock, Non-Key Retaining, 3/4" Shackle Clearance, Less Cylinder	54425L0				

52 Series Padlock, 5/16" Shackle

Description	Part Number	Medeco ³	BiLevel	Medeco X4	eCylinder
1 1/8" Clearance, Boron Alloy Shackle	526201 (P) 526201 (S)				
2 3/8" Clearance, Boron Alloy Shackle	526301 (P) 526301 (S)				
1 1/8" Clearance, Boron Alloy Shackle, Less Cylinder	526200				
2 3/8" Clearance, Boron Alloy Shackle, Less Cylinder	526300				
1 1/8" Clearance, Stainless Steel Shackle	526211 (P) 526211 (S)				
2 3/8" Clearance, Stainless Steel Shackle	526311 (P) 526311 (S)				
1 1/8" Clearance, Stainless Steel Shackle, Less Cylinder	526210				
2 3/8" Clearance, Stainless Steel Shackle, Less Cylinder	526310				

*Padlock body is solid brass with 26 plated finish.

52 Series Padlock, 5/16" Shackle, Removable Core

Description	Part Number	Medeco ³	BiLevel	Medeco X4	eCylinder
1 1/8" Clearance, Boron Alloy Shackle, Removable Core, Less Cylinder	526202				
2 3/8" Clearance, Boron Alloy Shackle, Removable Core, Less Cylinder	526302				
1 1/8" Clearance, Stainless Steel Shackle, Removable Core, Less Cylinder	526212				
2 3/8" Clearance, Stainless Steel Shackle, Removable Core, Less Cylinder	526312				

Padlock body is solid brass with 26 plated finish

For pricing of expired patent technologies (Original, Biaxial, KeyMark) please refer to the spreadsheet on the partner section of www.medeco.com.

**Refer to the eCylinder section for more detail on specific technologies available and pricing. Technologies are represented by the following letters:

T = Medeco³, S = M³ CLIQ, J = Medeco³ BiLevel, W = Biaxial, V = Medeco Biaxial CLIQ, K = Medeco KM, N = Medeco X4, C = Classic CLIQ, M = Medeco X4 CLIQ,
 ". " = Original, Z = Medeco Original KW CLIQ, G = Medeco XT ***See key section for surcharges for custom coined cut keys or special stamping requirements.

Note: (P) refers to **Pinned** and (S) to **Sub-Pinned** at the end of each part string in the price book.

52 Series Padlock, 7/16" Shackle

Description	Part Number	Medeco ³	BiLevel	Medeco X4	eCylinder
1 3/8" Clearance, Boron Alloy Shackle	526001 (P)				
	526001 (S)				
1 7/8" Clearance, Boron Alloy Shackle	526101 (P)				
	526101 (S)				
1 3/8" Clearance, Boron Alloy Shackle, Less Cylinder	526000				
1 7/8" Clearance, Boron Alloy Shackle, Less Cylinder	526100				
1 3/8" Clearance, Stainless Steel Shackle	526011 (P)				
	526011 (S)				
1 7/8" Clearance, Stainless Steel Shackle	526111 (P)				
	526111 (S)				
1 3/8" Clearance, Stainless Steel Shackle, Less Cylinder	526010				
1 7/8" Clearance, Stainless Steel Shackle, Less Cylinder	526110				

*52 Series Padlock body is solid brass with 26 plated finish.

52 Series Padlock, 7/16" Shackle, Removable Core

Description	Part Number	Medeco ³	BiLevel	Medeco X4	eCylinder
1 3/8" Clearance, Boron Alloy Shackle, Removable Core, Less Cylinder	526002				
1 7/8" Clearance, Boron Alloy Shackle, Removable Core, Less Cylinder	526102				
1 3/8" Clearance, Stainless Steel Shackle, Removable Core, Less Cylinder	526012				
1 7/8" Clearance, Stainless Steel Shackle, Removable Core, Less Cylinder	526112				

Padlock body is solid brass with 26 plated finish.

52 series Padlocks Cover Options: 00 = Standard, 01 = Case Cover, 10 = Dust Cover

For pricing of expired patent technologies (Original, Biaxial, KeyMark) please refer to the spreadsheet on the partner section of www.medeco.com.

**Refer to the eCylinder section for more detail on specific technologies available and pricing. Technologies are represented by the following letters:

T = Medeco³, S = M³ CLIQ, J = Medeco³ BiLevel, W = Biaxial, V = Medeco Biaxial CLIQ, K = Medeco KM, N = Medeco X4, C = Classic CLIQ, M = Medeco X4 CLIQ, "." = Original, Z = Medeco Original KW CLIQ, G = Medeco XT ***See key section for surcharges for custom coined cut keys or special stamping requirements.

Note: (P) refers to **Pinned** and (S) to **Sub-Pinned** at the end of each part string in the price book.

Padlock Cylinders

Description	Part Number	Medeco ³	BiLevel	Medeco X4	eCylinder
5 Pin Cylinder (6 pin Medeco X4) for Hockey Puck Style Padlock sold after 9/2004 (KIK style cylinder)	2001600 (P)				
	2001600 (S)				
6 Pin Cylinder for LFIC Medeco Padlock, for 54 Series Padlocks	320201 (P)				●
	320201 (S)				
6 Pin Cylinder for KIK Medeco Padlock, for 54 Series Padlocks	510600 (P)				●
	510600 (S)				
5 Pin Spring Bolt Cylinder (non-key retaining), for G8R Padlock	960357 (P)				
	960357 (S)				
5 Pin Deadbolt Cylinder (key retaining), for G8R Padlock	960358 (P)				
	960358 (S)				
Spacer for use with 5 Pin Cylinders, for G8R Padlock	CP-160691				
5 Pin cylinder (cam lock style) for 52-6 series padlocks	66418 (P)				
	66418 (S)				
4 Pin Removable plug for 52-6 padlocks	66391 (P)				
	66391 (S)				

eCylinder Padlock Cylinders

eCylinders are available for many of the padlocks. Please check the eCylinder section for specific part numbers and pricing.

For pricing of expired patent technologies (Original, Biaxial, KeyMark) please refer to the spreadsheet on the partner section of www.medeco.com.

**Refer to the eCylinder section for more detail on specific technologies available and pricing. Technologies are represented by the following letters:

T = Medeco³, S = M³ CLIQ, J = Medeco³ BiLevel, W = Biaxial, V = Medeco Biaxial CLIQ, K = Medeco KM, N = Medeco X4, C = Classic CLIQ, M = Medeco X4 CLIQ, "." = Original, Z = Medeco Original KW CLIQ, G = Medeco XT ***See key section for surcharges for custom coined cut keys or special stamping requirements.

Note: (P) refers to **Pinned** and (S) to **Sub-Pinned** at the end of each part string in the price book.

Components

Description	Part Number	Price
Component Package for 54 Series Padlocks, NonKey Retaining. Includes CP-130510 Cylinder Extension/Actuator, Spring & Washer, CP-022030 Cylinder Retainer, CP-011511-000 Retainer Screw, CP-250140 Steel Ball Bearing	94-0199	
Cylinder Retainer Sleeve (Fits over Cylinder Bible Chamber & holds cylinder in padlock body)	CP-022030	
Retainer Screw, #6-32 UNC-2A x .312" length	CP-011511-000	
Cylinder Extension/Actuator, Non Key Retaining, Spring & Washer for 54 Series Padlocks	CP-130510	
Stainless Steel Ball Bearing for 54 Series Padlocks, .360" Diameter	CP-250140	
Cylinder Extension/Actuator, Key Retaining, for 54 Series Padlocks	CP-200720	

Shackles for Indoor/Outdoor Padlocks

Description	Boron Alloy Steel		Stainless Steel	
	Part Number	Price	Part Number	Price
Standard Shackle for 54-51 Indoor/Outdoor Padlock, 1-1/8" Shackle Clearance x 5/16" Diameter	CP-144120		CP-144180	
Extra Length Shackle for 54-51 Indoor/Outdoor Padlock, 2-3/8" Shackle Clearance x 5/16" Diameter	CP-144130		CP-144190	
Standard Shackle for 54-71 Indoor/Outdoor Padlock, 1-3/8" Shackle Clearance x 7/16" Diameter	CP-144150		CP-144210	
Extra Length Shackle for 54-71 Indoor/Outdoor Padlock, 1-7/8" Shackle Clearance x 7/16" Diameter	CP-144160		CP-144220	

Shackles for Shrouded Padlocks

Description	Boron Alloy Steel		Stainless Steel	
	Part Number	Price	Part Number	Price
Standard Shackle for 54-52 Shrouded Padlock, 3/4" Shackle Clearance x 5/16" Diameter	CP-144110		CP-144170	
Standard Shackle for 54-72 Shrouded Padlock, 3/4" Shackle Clearance x 7/16" Diameter	CP-144140		CP-144200	

Hockey Puck Padlocks

Medeco® offers a variety of High Security Padlocks that are designed to accept both mechanical and eCylinders. The Medeco® Hockey Puck style padlocks come with hardened, solid steel bodies, a shackle-less design for the highest level of protection against bolt cutter attacks, and patent protected key control. Every padlock cylinder is UL 437 Listed and can be keyed into any existing 10 series product. The Medeco³ unique design provides triple locking action, making the locks virtually pick proof. All Medeco³ keys and locks are protected under patent, trademark, and copyright laws. Medeco³ keys may only be duplicated by Medeco® or by a Medeco® authorized sales outlet, and only at your request.



Patented Key Control

Protects against unauthorized duplication of your keys.



Protection From Physical Attack

Medeco³ padlock cylinders are UL 437 listed and stand up to drilling, picking and other forms of physical attack. The Hockey Pucks shackle-less design provides the highest protection from bolt cutter attacks.



Can Be Masterkeyed

Medeco Hockey Puck Padlocks can be masterkeyed into existing Medeco 10 Series products.



Available in eCylinder

Medeco's Hockey Puck Padlocks are also available with Medeco eCylinders for Loss & Liability control.



Special Angle Cut Keys

Requires a special key cutting machine and access to Medeco specific blanks, available in a variety of restrictions to support every need.



Picking and Bumping Protection

Medeco³ cylinders use a sidebar that prevent the key from rotating until it is elevated, rotated and aligned in the correct position. This feature protects against bumping and picking attacks.

Technical Features:

- Hardened steel body.
- 5 pin, key-in-knob cylinder.
- Requires a key to relock.
- Hardened solid steel, black chrome plated body.
- All Medeco® cylinders are constructed of durable machined brass components, designed to last the life of your equipment.

Applications:

Hockey Puck style padlocks can be used in a variety of different applications including vending, storage and transportation.

Warranty:

Warranted for two (2) years against manufacturer's defects. See the Medeco® limited warranty for full details.

Available Key Technologies:

Mechanical:

- Medeco³
- Medeco³ BiLevel*
- Medeco X4*

eCylinder:

- Medeco XT

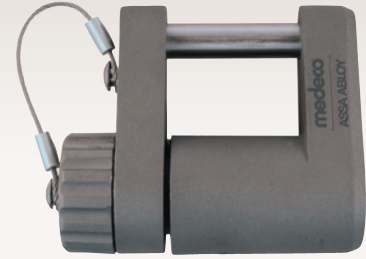
52-9 Series Hockey Puck Padlock

Description	Part Number	Medeco ³	BiLevel	Medeco X4	eCylinder
Hockey Puck Padlock, With 5 Pin High Security or 6 Pin Medeco X4 Cylinder	5293000 (P) 5293000 (S)				
Hockey Puck Padlock, Non-Key Retaining, Less Cylinder	52930L0				

Hockey Puck uses unique cylinders and can be keyed to a door hardware key. Not available with LFIC or SFIC.

G8R Padlocks

Medeco® offers a variety of High Security Padlocks that are designed to accept both mechanical and eCylinders. With its tough, weather resistant construction, this is the padlock of choice for extreme environments such as trailers, cargo containers, and gates. The Medeco® G8R body is constructed of solid stainless steel. You can choose from either a stainless steel shackle for maximum corrosion resistance, or hardened steel to withstand severe physical attack. Each padlock includes a weather seal cap attached by a cable. The Medeco® G8R will accept either an eCylinder or mechanical t-handle cylinder. The mechanical cylinders provide the benefit of patented key control and pick resistance. The eCylinder adds sophisticated audit and control features transforming the G8R into a portable access control system for extreme environments.



Patented Key Control

Protects against unauthorized duplication of your keys.



Protection From Physical Attack

Medeco³ padlock cylinders are UL 437 listed and stand up to drilling, picking and other forms of physical attack. Available in either a hardened steel shackle to withstand severe physical attack or a stainless steel shackle for maximum corrosion resistance.



Weather Resistant Construction

Uses a weather seal cap, attached by a cable, to provide protection from water and road grime.



Available in eCylinder

Medeco G8R Padlocks are also available with Medeco eCylinders for Loss & Liability control.



Special Angle Cut Keys

Requires a special key cutting machine and access to Medeco specific blanks, available in a variety of restrictions to support every need.



Picking and Bumping Protection

Medeco³ cylinders use a sidebar that prevent the key from rotating until it is elevated, rotated and aligned in the correct position. This feature protects against bumping and picking attacks.

Technical Information:

- 300 series, cast stainless steel body.
- Padlock is sold less cylinder. Compatible with Medeco® mechanical and NEXGEN electronic t-handle cylinders.
- Padlocks are shipped with a weather seal cap attached by a steel cable. A finish plate is included for applications that do not require the weather seal cap.
- Sealed construction protects cylinders from water and road grime.
- Stainless steel body resists attack and corrosion.
- Shackles can be specified in stainless or hardened steel to fit your application.

Applications:

- The G8R Series was designed for locking installations requiring weather resistance and strong physical security. Applications include:
 - Cargo containers
 - Trailer doors
 - Gates
 - Vending machines

Warranty:

Warranted for two (2) years against manufacturer's defects. See the Medeco® limited warranty for full details

Available Key Technologies:

Mechanical:

- Medeco³

eCylinder:

- Medeco XT
- Classic CLIQ
- Medeco Nexgen

G8R Series Padlock

Description	Part Number	Price
G8R Weather-tight Padlock, 5/16" Stainless Steel Shackle, less pop-out cylinder	52110040	
G8R Weather-tight Padlock, 5/16" Hardened Steel Shackle, less pop-out cylinder	52111040	
G8R Weather-tight Padlock, 7/16" Stainless Steel Shackle, less pop-out cylinder	52120040	
G8R Weather-tight Padlock, 7/16" Hardened Steel Shackle, less pop-out cylinder	52121040	
G8R cap and seal kit	94-0213	

G8R padlocks are sold less cylinder and use a cam lock style key with pop-out plug.

Keys are charged separately for this style cylinder.