

Palm Beach County Zip Code Report

September 2017



Table of Contents

Introduction	3	33409 West Palm Beach (Haverhill)	22
Study Background	3	33415 West Palm Beach (Greenacres, Haverhill, West Palm Beach)	24
Methodology	3	33417 West Palm Beach (Haverhill, West Palm Beach)	26
Selected Indicators	4	33430 Belle Glade	28
Points of Interest on Maps	5	33493 South Bay	28
Data Analysis Description	6	33435 Boynton Beach (Briny Breezes, Ocean Ridge)	30
Palm Beach County Risk Indicators Across Zip Codes	7	33438 Canal Point (Bryant)	32
Zip Code Data for 19 Most Challenged Zip Codes	8	33476 Pahokee	32
Specific Zip Code Data	10	33444 Delray Beach	34
33401 West Palm Beach	10	33460 Lake Worth (Lantana)	36
33403 West Palm Beach (Lake Park, North Palm Beach, Palm Beach Gardens, Riviera Beach, West Palm Beach)	12	33461 Lake Worth (Palm Springs)	38
33404 Riviera Beach (Palm Beach Shores, Riviera Beach, Singer Island, West Palm Beach)	14	33462 Lake Worth	40
33405 West Palm Beach	16	33463 Lake Worth (Greenacres)	42
33406 West Palm Beach (Cloud Lake, Glen Ridge, Lake Clarke, Lake Clarke Shores, Palm Springs, West Palm Beach)	18	Glossary of Terms	44
33407 West Palm Beach (Riviera Beach)	20	Appendix 1: Data Table by Total Red Indicators	46
		Appendix 2: Data Table by Zip Code	48
		Sources	50



Introduction

For more than 30 years, Children’s Services Council of Palm Beach County has funded programs and services to support pregnant women and parents in raising children to reach their full potential. The Council is an independent special district established by Palm Beach County voters, who approved a dedicated source of funding to ensure children are healthy, safe and strong. The Council’s goals are that children are:

- Born healthy
- Safe from abuse and neglect
- Ready for kindergarten
- Able to access to quality afterschool and summer programs

Children’s Services Council carefully selects the programs, services and interventions to accomplish its goals, considering community needs and strengths and the best research and evidence. The Council primarily works with local nonprofit and governmental agencies to operate and deliver programs.

The Council uses a process called the Strategy Review and Allocation Analysis (SRAA) to continuously improve its decisions regarding program funding. The first component of this analysis is a community needs assessment. The assessment helps identify health priorities and gaps in services for pregnant women, parents, infants and young children in Palm Beach County. The information garnered also aids in writing a new five-year Healthy Start Service Delivery Plan. The delivery plan outlines the work of the Healthy Start Coalition of Palm Beach County.

To accurately assess the needs of our community, Children’s Services Council recently commissioned a number of qualitative and quantitative studies. These included parent and provider surveys, focus groups, Photovoice (a focus group with photography), data collection and a needs assessment review. As part of its Community Needs Assessment 2017, Children’s Services Council updated a report that looked at data at the zip code level. The initial Palm Beach County Selected Zip Code Data, Maps & Child Information report or Zip Code Report was first published in April 2010.

Study Background

In the fall of 2009, CSC began a planning process to assist in determining funding priorities (currently known as the SRAA). Based on information obtained through this planning process; knowledge gained from prior implementation of programs, and critical analysis of all available data, CSC

would select communities and geographic areas to target future funding and programs to have the biggest impact. For example, the report was used to identify in which zip codes CSC would place its BRIDGES placed-based initiative.

The report compares a range of data across zip codes in Palm Beach County. Indicators were selected based primarily on the priority areas that are CSC’s focus – increasing healthy births, reducing child abuse and neglect, increasing the number of children entering school eager and ready to learn, and ensuring children have access to quality afterschool programs.

Zip codes were noted if they scored among the most challenged on a particular indicator and the information was then charted across all the indicators examined. Several zip codes emerged as areas facing numerous challenges and received poor ratings across multiple indicators. Maps were also created that display a range of information for each zip code, such as the level of poverty by census tracts, location of child care centers, schools and other community resources.

While used by CSC to target new programs and services, the Zip Code Report, 2010 was widely used and requested by community partners and other agencies in Palm Beach County.

Methodology

Children’s Services Council launched the Community Needs Assessment (CNA) in September 2015. The goal was to collect information from a variety of perspectives, including community partners, residents, and particularly those who access supports and services. Additionally, the team was tasked to update the original Zip Code Report. An internal cross-functional team at CSC with a dedicated project manager led the process.

The team began with a review of the prior report. Through the review process, it was decided to not only update the data but to revise the indicators. Many of the indicators were thought to be duplicative, as they were an indicator of the same problem. Additionally, new data was available at the zip code level.

Next, the team brainstormed ideas for new indicators. Additionally, research was conducted for new data sources looking at previous needs assessments, communities similar to Palm Beach County, recommendations from national sources, such as the U.S. Centers for Disease Control and Prevention, the National Association of City and County Health Officials and the Association of Maternal & Child Health Programs. Through a multi-dot voting process indicators were prioritized by the CNA team.

Data was collected from numerous sources and compiled into one spreadsheet. The lowest performing zip codes (top twenty or bottom twenty depending on the indicator) were marked as red or high need. The number of red indicators were totaled for each zip code. The top 19 (out of 51 total county) zip codes were included in the report to explore the demographic makeup and socioeconomic data of these communities. Due to the small populations in both South Bay and Canal Point, these zip codes were combined with neighboring Belle Glade and Pahokee, respectively.

Selected Indicators

Indicators were selected based on CSC's priority areas and focused on pregnancy, birth and early childhood. To ensure social determinants of health were a part of the analysis, CSC opted to use the Community Needs Index developed by Truven Healthcare. The following indicators were included in the report:

Percent of Families with Children in Poverty – Poverty thresholds are the dollar amounts used to determine poverty status. Thresholds vary by the size of the family and age of the members. To calculate total family income, the incomes of all related family members who live together are added up to determine poverty status. Children who live in poverty are at greatest risk for negative cognitive, social, and health outcomes relative to their more affluent peers. Families with fewer resources, including many single parent households, are at higher risk for stress, poor physical and mental health, and other problems that can lead to ineffective parenting and less responsive home environments. (Source: American Community Survey 5-year estimates, 2011-2015)

Percent of Low Birthweight Babies – Percent of births in which a baby has a low birthweight (LBW), a weight of less than 2,500 grams or 5 pounds, 8 ounces at birth (regardless of gestational age and plurality). This is one of the strongest predictors of an infant's health and survival. Low birthweight is a leading cause of infant mortality, but infants who survive also are at elevated risk for many long-term health conditions including hearing and vision problems, cerebral palsy and developmental disabilities that can impair school readiness and school achievement. (Source: Florida CHARTS 3-year rolling averages, 2013-2015)

Percent of Premature Babies – Percent of babies born early. Births that occur before 37 weeks have lower chances of survival and higher chances of short-term and long-term health problems. Children born preterm are at greater risk

of experiencing developmental delays, hearing and vision problems, cerebral palsy and other developmental disabilities. (Source: Florida CHARTS 3-year rolling averages, 2013-2015)

Percent of Women with Late or No Prenatal Care – Percent of women who do not receive medical care during pregnancy or enter into care (late) in the third trimester. Women who see a health care provider regularly during pregnancy have healthier babies and are less likely to have pregnancy complications. It is recommended that women begin prenatal visits in the first trimester of pregnancy or as soon as pregnancy is confirmed. Often, socioeconomic barriers exist to accessing prenatal care, including poverty, minority status, age less than 18 years, non-English speaking, being unmarried, and having less than a high school education. (Source: Florida CHARTS 3-year rolling averages, 2013-2015)

Percent of Teen Births – The percent of births to 15-19 year olds. Babies born to teens and older mothers may be at greater risk for preterm delivery, low birthweight and neonatal mortality (death within the first 28 days of life). Teen pregnancy is related to critical social issues including welfare dependency, out of wedlock births, father involvement and workforce development. (Source: Florida CHARTS 3-year rolling averages, 2013-2015)

Children Scoring Not Ready for School – The percent of children scoring 'not yet' ready (cannot perform this indicator) on the Florida Kindergarten Readiness Screener on the Work Sampling System (FLKRS-WSS). WSS has the following domains: Personal and Social Development, Language and Literacy, Mathematical Thinking, Scientific Thinking, Physical Development/Health and Safety. Children who are ready for school will be more engaged early in their school years, which can have a profound effect on school achievement and graduation. (Source: School District of Palm Beach County, 2015-16)

Children Scoring Not Reading on 3rd Grade Reading Level – The percent of children identified not reading at grade level in third grade on the Florida Standard Assessments (FSA). Children who are not reading at grade level are four times more likely to drop out of high school. (Source: School District of Palm Beach County, 2015)

High School Graduation Rate – Percent of students who graduate within four years of their first enrollment in ninth grade. A high school diploma enables a person to pursue a higher education and is a doorway to more long-term career opportunities. Those who graduate from high school have been found to have

higher self-esteem, feel more confident in finding a career and are proud of their achievements. (Source: School District of Palm Beach County, 2015)

Community Needs Index - Dignity Health and Truven Health Analytics jointly developed a Community Need Index (“CNI”) in 2004 to assist in the process of gathering vital socio-economic factors in the community. The CNI is strongly linked to variations in community healthcare needs and is a strong indicator of a community’s demand for various healthcare services. The CNI score is an average of five different measures of various socio-economic indicators including income, culture, education, insurance and housing. Zip codes with a score of 4.2 – 5 were considered the highest need. (Source: Dignity Health Community Needs Index, 2015; <http://cni.chw-interactive.org/>)

Estimated Child Care Needs (Number of Children Eligible for Child Care Subsidies but not Receiving Them) – The difference between the number of children less than 6 years of age below 150% of Federal Poverty and the number of children served by Early Head Start, Head Start, Migrant and Seasonal Head Start, School Readiness Program Paid Enrollment or Children’s Services Council Scholarships. One hundred fifty percent (150%) poverty level is one qualification to be eligible for subsidized care. (The accessibility of child care for low-income earners is dependent on the availability of subsidies.) Other qualifications may result in children being able to receive child care subsidies and result in negative numbers (overserved for child care) in zip codes with small populations. Substantial research demonstrates that accessible high-quality child care positively affects childhood growth, physical development, and physical health, cognitive, behavioral and school outcomes. (Sources: Early Learning Coalition, 2015-16; Lutheran Services, 2015-16; Redlands Christian Migrant Association, 2015-16; American Community Survey, 2011-2015)

Percent of Verified Unduplicated Child Abuse Cases – Children 0 to 5 years with evidence of maltreatment (includes only verified cases) subject to the Florida Department of Children and Families Investigations. This indicator was calculated by the number of verified child abuse cases ages 0 to 5 in the zip code divided by the total number of abuse cases 0 to 5 in Palm Beach County. Exposure to environments of abuse and neglect can affect children’s development and overall well-being. (Source: Florida Department of Children and Families, Circuit 15, 2014-2016)

Points of Interest on Maps

The maps include points of interest or community assets that offer resources for the community. A number of the points of interest selected are part of CSC System of Care. The maps include the following points of interest:

Quality Early Care Programs (Strong Minds Child Care Programs)

Strong Minds is a voluntary quality rating improvement system that promotes high quality in early care and education programs. The goal of Strong Minds is to ensure all children arrive at kindergarten ready to learn. Strong Minds supports available to child care programs include: reliable and valid program assessments, child assessments, navigation services, targeted technical assistance and tiered reimbursement supplements. Supports available to child care practitioners include access to a professional development system inclusive of: career advising, SEEK scholarships to help cover the cost of professional development, formal and informal training, registry membership and salary supplements. Supports available to families include: involvement in their child’s development through screening and assessment, individualized instruction and access to quality child care through Children’s Services Council (CSC) Scholarships.

BRIDGES

BRIDGES sites work collaboratively with residents, systems and subsystems to ensure child outcomes are met for children living in the ten BRIDGES neighborhoods. BRIDGES, supported by Children’s Services Council and coordinated by Community Partners and Children’s Home Society, strives to ensure these neighborhoods, in spite of decades of disinvestment, unemployment and concentrated poverty, become the kinds of places that enable all children and families to succeed and thrive.

Afterschool Quality Sites

The Quality Improvement System is a voluntary program for afterschool providers who want to implement proven youth development strategies, which will enhance children’s learning by creating a fun, engaging, safe and supportive atmosphere. The system, supported by Children’s Services Council and Prime Time Palm Beach County, employs five quality standards for afterschool programs which include: solid organizational framework, supportive ongoing relationship, positive and inclusive environment, challenging learning experiences, and family outreach and involvement. Programs that participate receive the following benefits, free of charge: coaching and technical assistance, access to fun and informative trainings by Prime Time’s Professional

Development department, access to a broad network of professionals providing programming at your site, educational scholarships and wage supplements for staff and other financial incentives.

Prosperity Centers

Prosperity Centers operated by Community Partners partnership with United Way of Palm Beach County offer Palm Beach County low-income residents a one-stop source of financial empowerment services, including a matched-savings program for home ownership, help in resolving credit issues, money management assistance, ACCESS benefits assistance, education and job assistance, plus free VITA (Volunteer Income Tax Assistance) income tax services.

Youth Empowerment Centers

Youth Empowerment Centers (YEC) partially funded by the Youth Services Department of Palm Beach County program provides activities and services to at risk youth ages 11-19, including after-school educational and recreational programs/activities. The YEC focuses on empowering youth, promoting education, promoting health, promoting leadership and community involvement.

Community Action Centers

Community Action Service Centers operated by Palm Beach County are focused on helping the poor, low-income, and less fortunate make it through a crisis. Senior citizens and those with disabilities are also some key clients. The community action agency also very importantly works with clients on helping them obtain stability, employment, and education.

Data Analysis Description

Data indicators were collected for each zip code in Palm Beach County. Poorly performing indicators ranked in the top twenty or bottom twenty (depending on the indicator) of all Palm Beach County zip codes were marked red. The data tables are located on page 48 or can be downloaded separately at www.cscpbcc.org/commneeds. The charts and maps below offer various ways to examine the zip codes performance and offer information to help determine potential causes.

Risk Indicators Across Zip Codes (Map)

All zip codes were marked as high risk (red), medium risk (orange), low risk (yellow) based on the number of red indicators. Nineteen zip codes are considered high risk with more than 7 red indicators. Twelve zip codes are medium risk with 3-6 red indicators. Twenty-one zip codes are considered low risk and have less than 2 red indicators.

Zip Code Data for Most Challenged Zip Codes

This chart provides the indicator data for the 19 most challenged or high risk zip codes in Palm Beach County. These zip codes have more than seven red indicators and are color coded red on the Risk Indicators Across Zip Codes map.

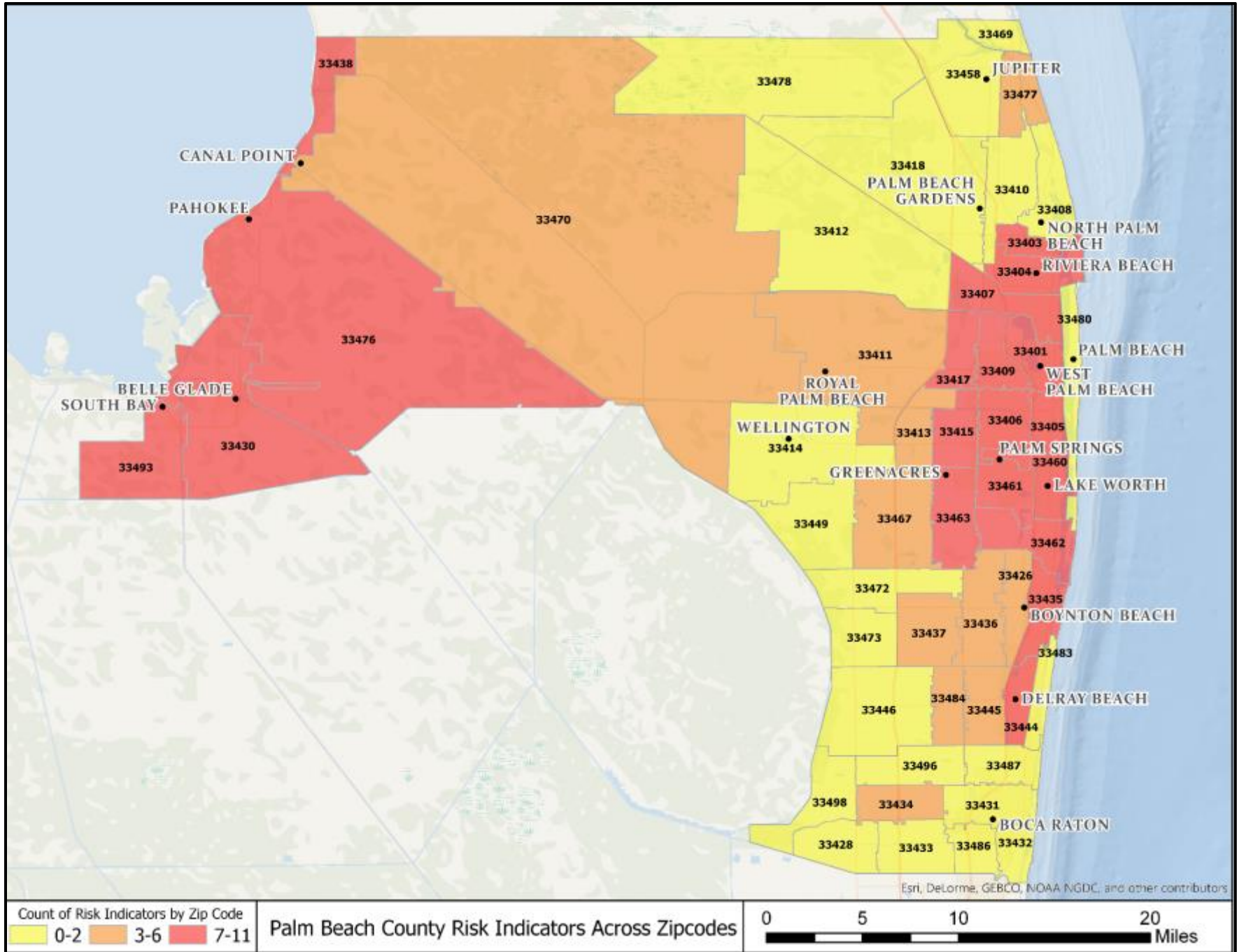
Comparison of the 19 Most Challenged Zip Codes

The zip codes listed within this chart have seven or more red indicators. According to the American Community Survey (2011-2015) the cumulative population of the identified zip codes is 37.1% of the population in Palm Beach County. The table illustrates the variation in size, population density, family size and median age of each area.

Specific Zip Code Data

Each high-risk zip code was mapped to examine the number of children 0 to 5 in poverty by census tract. Additionally, the maps highlight community assets available to residents. A table was created to further explore the demographics and social determinants within each zip code. The tables contain data from the American Community Survey, 5 year estimates 2011-2015. A Glossary of Terms is provided on page 46.

Palm Beach County Risk Indicators Across Zip Codes



Zip Code Data for 19 Most Challenged Zip Codes

	West Palm Beach								Riviera Beach	Lake Worth				Boynton Beach	Delray Beach	Belle Glade/South Bay	Pahokee/Canal Point
Indicators	33401	33403	33405	33406	33407	33409	33415	33417	33404	33460	33461	33462	33463	33435	33444	33430/ 33493	33476/ 33438
Families with Children in Poverty (%)	31.2	46.0	23.2	21.4	35.2	18.3	28.2	15.0	33.4	33.4	22.5	28.3	13.0	23.8	26.6	36.1	48.1
Women with Late or No Prenatal Care (%)	6.8	7.2	7.8	8.8	8.6	7.7	9.4	8.7	7.7	12.5	7.8	7.5	8.6	10.0	7.7	9.1	6.7
Low Birthweight Babies (%)	10.0	9.3	7.8	7.5	11.2	9.9	7.8	9.5	13.3	8.2	8.0	7.6	8.8	10.1	9.3	9.7	12.4
Premature Babies (%)	10.0	9.4	10.2	9.1	10.7	10.3	9.3	10.0	14.2	8.9	8.9	9.0	10.1	10.7	8.5	12.2	13.9
Estimated Childcare Needs	119	119	501	738	803	662	1796	912	621	1327	1863	832	1392	682	255	787	192
Children Scoring Not Ready for School (%)	11.6	6.2	18.5	12.0	10.3	6.9	9.8	6.5	9.9	13.7	12.5	9.3	9.4	11.5	13.0	5.8	8.8
Children Not on 3rd Grade Reading Level (%)	61.9	59.7	49.8	47.4	65.8	62.7	53.7	56.3	67.8	70.6	63.2	59.9	55.9	67.5	64.8	75.9	59.2
Teen Births (%)	6.6	7.0	5.9	6.4	6.2	7.1	5.6	5.9	9.9	7.5	7.4	7.2	5.8	5.5	4.2	8.1	9.7
High School Graduation Rate (%)	83.3	74.5	81.8	85.5	80.3	76.5	77.7	80.7	80.7	74.6	78.7	77.6	83.5	77.7	81.7	66.4	75.0
Percent Verified Unduplicated Child Abuse Cases (%)	3.0	1.5	0.8	0.6	6.9	4.0	3.6	4.5	6.9	4.8	6.4	3.7	6.3	3.2	2.0	3.7	2.1
Community Needs Index	4.4	4.4	5	4.2	4.8	4.2	4.8	4.6	4.8	5	4.8	4.2	3.6	4.6	4.4	5	5
Total Red	10	7	9	8	11	9	9	9	11	9	9	9	10	11	9	10	9

Red - Poorly performing indicators which ranked in the top twenty or bottom twenty depending on the indicators.

Comparison of the 19 Most Challenged Zip Codes

Zip Code	Size (square miles)	Population Density (people per square miles), 2011-2015	Percent Children 0 to 5, 2011-2015	Average Family Size, 2011-2015	Median Age, 2011-2015	Number of Poor Indicators
33401	5.50	4,525	3.2%	3.09	40.5	10
33403	3.36	3,580	6.1%	3.47	36.6	7
33404	7.69	3,547	6.7%	3.54	41.5	11
33405	4.50	4,258	4.7%	3.41	39.6	9
33406	8.89	2,958	7.3%	3.49	35.6	8
33407	10.07	2,945	9.7%	3.65	32.6	11
33409	6.45	4,521	7.9%	3.61	33.7	9
33415	7.40	6,078	7.4%	3.61	36.3	9
33417	6.72	4,342	6.3%	3.24	45.0	9
33430	113.74	188	8.2%	3.87	32.6	10
33435	6.58	4,879	5.6%	3.42	42.0	11
33438	21.10	22	6.3%	2.77	54.7	9*
33444	5.03	4,023	4.5%	3.53	39.4	9
33460	4.69	6,569	6.7%	3.59	35.4	9
33461	7.25	5,624	7.8%	3.69	34.2	9
33462	8.77	3,521	5.8%	3.47	40.6	9
33463	10.74	5,005	7.3%	3.85	34.0	10
33476	26.26	292	7.9%	4.00	34.0	9
33493	62.11	79	3.5%	4.23	35.8	10*

*Analyzed in combination with another zip code due to small population size

Specific Zip Code Data

33401 West Palm Beach

Zip code 33401 is an urban, well populated (25,810) and fairly compact (5.50 square miles) area in downtown West Palm Beach that makes up 1.9% of the population of Palm Beach County. This area has a slightly higher Black population, compared to Palm Beach County. Although the percentages of families in poverty are higher, there are much lower rates of unemployment. Additionally, there are fewer three and four year olds enrolled in preschool compared to the county.

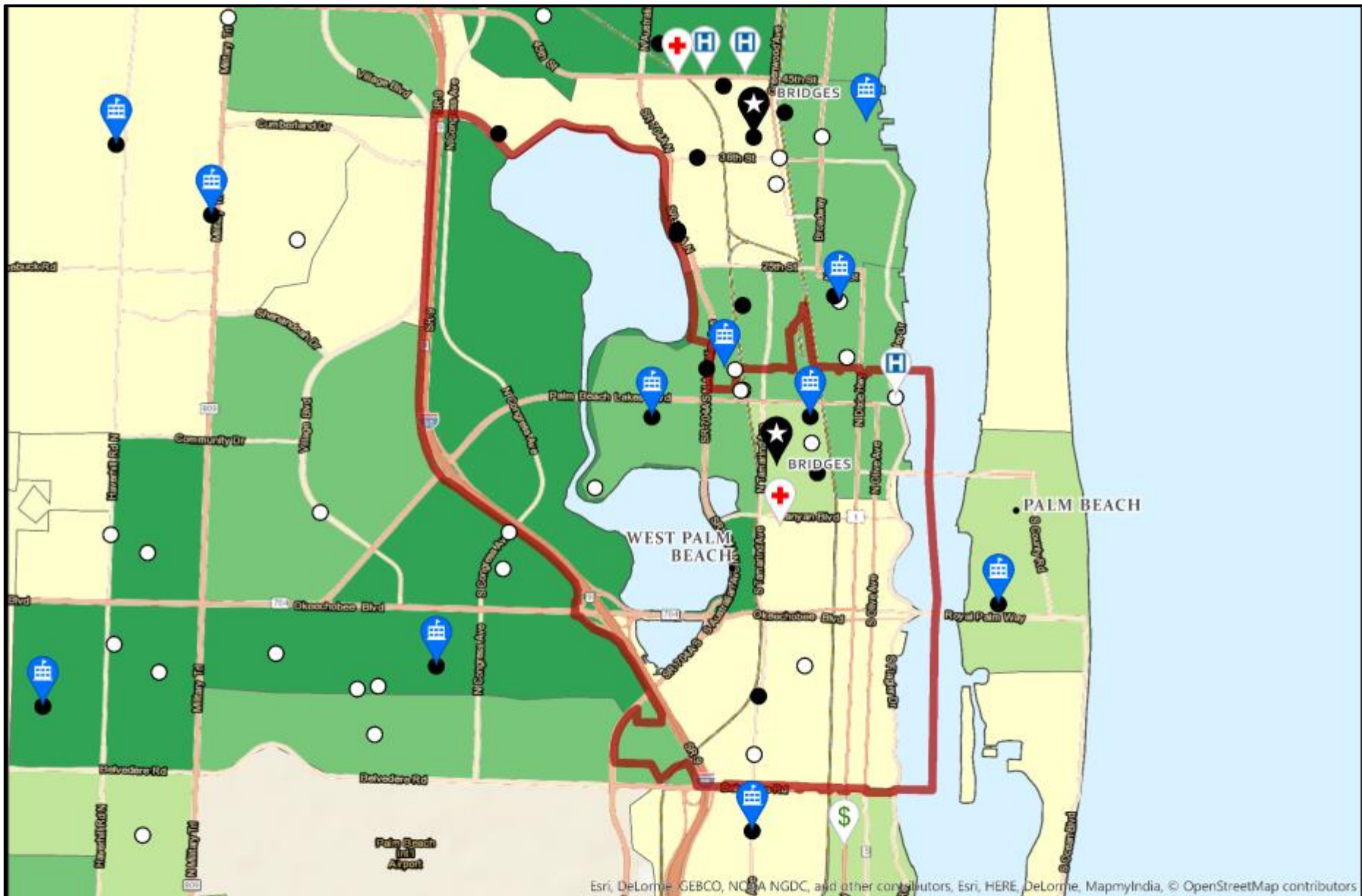
According to the American Community Survey, the population is approximately 57% White, 36% Black and 15% Hispanic. Twenty percent

age of the population is 40.5 years with 3.2% of the population under age 5 and 17.9% under 19 years old. Eighty-eight percent (88.4%) of the population over age 25 has graduated from high school. Looking at three and four year olds, 37.7% of the population is enrolled in school.

The median income for a family is \$51,116 and 13.8% of families live in poverty. The poverty levels are higher for those with children under five years old at 31.2% and with children under 18 years at 22.8%. Forty-seven percent (47.2%) of renters are paying 35% or more of their household income on rent. The median home value is \$164,900.

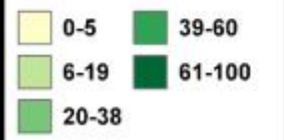
	Zip Code 33401	Palm Beach County
Population, 2015	25,810	1,378,806
White Population	56.5%	75.0%
Black Population	36.3%	18.0%
American Indian and Alaska Native alone	0.1%	0.2%
Asian alone	2.2%	2.5%
Native Hawaiian and Other Pacific Islander alone	0.1%	0.0%
Some other race alone	2.7%	2.2%
Two or more race	2.2%	2.1%
Hispanic	14.9%	21.1%
Foreign Born	20.0%	23.4%
Median Age	40.5	44.1
Median Family Income	\$51,116	\$65,914
Population 3 to 4 year olds Enrolled in School	37.7%	55.6%
High School Graduate (>25 years)	88.4%	87.8%
Uninsured	17.8%	17.5%
Families with Children under 5 in Poverty	31.2%	17.4%
Unemployment	5.4%	9.5%
Children under 5 with a Disability	1.3%	0.5%
More than 35% of income on rent	47.2%	51.6%

Source: American Community Survey 5 year estimates, 2011-2015



Esri, DeLorme, GEBCO, NOAA NGDC, and other contributors, Esri, HERE, DeLorme, MapmyIndia, © OpenStreetMap contributors

Number of Families with Children in Poverty



BRIDGES



Health Clinic



Prosperity Center



Quality Early Care Program



Elementary School



Hospital



Quality Afterschool Program

Zipcode 33401



33403 West Palm Beach (Lake Park, North Palm Beach, Palm Beach Gardens, Riviera Beach, West Palm Beach)

Zip code 33403 is located in east Palm Beach County with a population of 12,430 and covers 3.36 square miles which makes up less than 1% of the population of Palm Beach County. This area has a higher percentage of Black population, and higher percentages of uninsured compared to Palm Beach County. Almost 50% of families with children under 5 live in poverty.

According to the American Community Survey, the population is approximately 47% White, 44% Black and 8% Hispanic. Twenty-five percent (25%) of the population is foreign born. The median age of the population is 36.6 years with 6.1% of the population under age 5 and 21.0% under 19

years old. Almost 84% of the population over age 25 has graduated from high school. Looking at three and four year olds, 66.8% of the population is enrolled in school.

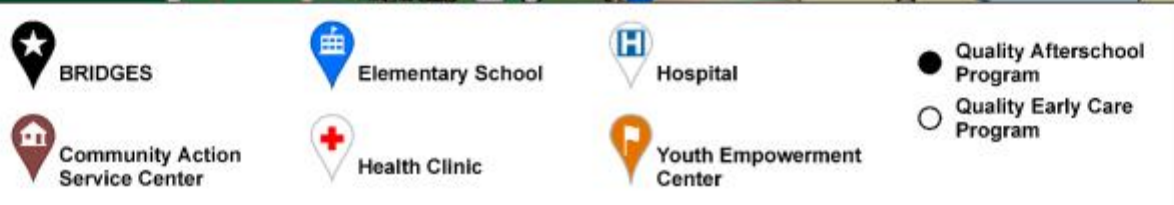
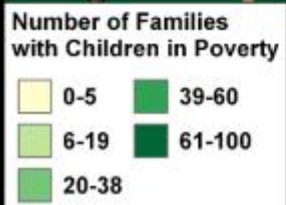
The median income for a family is \$44,335 and 22.0% of families live in poverty. The poverty levels are higher for those with children under five years at 46.0% and with children under 18 years at 32.3%. Almost fifty-five percent (54.6%) of renters are paying 35% or more of their household income on rent. The median home value is \$133,000.

	Zip Code 33403	Palm Beach County
Population, 2015	12,430	1,378,806
White Population	46.9%	75.0%
Black Population	43.9%	18.0%
American Indian and Alaska Native alone	0.0%	0.2%
Asian alone	2.8%	2.5%
Native Hawaiian and Other Pacific Islander alone	0.3%	0.0%
Some other race alone	2.5%	2.2%
Two or more race	3.6%	2.1%
Hispanic	7.6%	21.1%
Foreign Born	25.0%	23.4%
Median Age	36.6	44.1
Median Family Income	\$44,335	\$65,914
Population 3 to 4 year olds Enrolled in School	66.8%	55.6%
High School Graduate (>25 years)	83.7%	87.8%
Uninsured	25.9%	17.5%
Families with Children under 5 in Poverty	46.0%	17.4%
Unemployment	11.4%	9.5%
Children under 5 with a Disability	0%	0.5%
More than 35% of income on rent	54.6%	51.6%

Source: American Community Survey 5 year estimates, 2011-2015



Esri, HERE, DeLorme, MapmyIndia, © OpenStreetMap contributors



33404 Riviera Beach (Palm Beach Shores, Riviera Beach, Singer Island, West Palm Beach)

Zip code 33404 has a population of 27,662 and size at 7.69 square miles. It makes up 2.0% of the population of Palm Beach County. This area has a much higher percentage of Black residents, smaller percentage of Hispanics and foreign born compared to Palm Beach County. Additionally, unemployment rates are almost double and median income is much less than the county.

According to the American Community Survey, the population is 26% White, 70% Black and 5% Hispanic. Almost fourteen percent (13.9%) of the population in the area is foreign born. The median age of the population is

41.5 years with 6.7% of the population under age 5 and 24.8% under 19 years old. Approximately 83.2% of the population over age 25 has graduated from high school. Looking at three and four year olds, 40.8% of the population is enrolled in school.

The median income for a family is \$43,235 and 19.2% of families live in poverty. The poverty levels are higher for those with children under five years at 33.4% and with children under 18 years at 34.7%. Fifty-seven percent (57.4%) of renters are paying 35% or more of their household income on rent. The median home value is \$110,600.

	33404	Palm Beach County
Population, 2015	27,662	1,378,806
White Population	25.4%	75.0%
Black Population	70.2%	18.0%
American Indian and Alaska Native alone	0.3%	0.2%
Asian alone	1.7%	2.5%
Native Hawaiian and Other Pacific Islander alone	0.0%	0.0%
Some other race alone	0.6%	2.2%
Two or more race	1.8%	2.1%
Hispanic	4.7%	21.1%
Foreign Born	13.9%	23.4%
Median Age	41.5	44.1
Median Family Income	\$43,235	\$65,914
Population 3 to 4 year olds Enrolled in School	40.8%	55.6%
High School Graduate (>25 years)	83.2%	87.8%
Uninsured	17.2%	17.5%
Families with Children under 5 in Poverty	33.4%	17.4%
Unemployment	15.1%	9.5%
Children under 5 with a Disability	1.0%	0.5%
More than 35% of income on rent	57.4%	51.6%

Source: American Community Survey 5 year estimates, 2011-2015



Esri, DeLorme, GeoBC, AIG, IGN, VG, and other contributors, Esri, HERE, DeLorme, MapmyIndia, © OpenStreetMap contributors

<p>Number of Families with Children in Poverty</p> <table border="0"> <tr> <td> 0-5</td> <td> 39-60</td> </tr> <tr> <td> 6-19</td> <td> 61-100</td> </tr> <tr> <td> 20-38</td> <td></td> </tr> </table>	 0-5	 39-60	 6-19	 61-100	 20-38		<p> BRIDGES</p> <p> Community Action Service Center</p>	<p> Elementary School</p> <p> Health Clinic</p>	<p> Hospital</p> <p> Youth Empowerment Center</p>	<p> Quality Afterschool Program</p> <p> Quality Early Care Program</p>	<p>Zipcode 33404</p> <p>0 0.4375 0.875</p> <p> Miles</p>
 0-5	 39-60										
 6-19	 61-100										
 20-38											

33405 West Palm Beach

Zip code 33405 has a less than average land area (4.50 square miles) and a high population density. It has a population of 20,265, which makes up 1.5% of the population of Palm Beach County. This area has a much higher percentage of Hispanic population, foreign born population and uninsured individuals compared to Palm Beach County. Additionally, there are lower percentages of children three to four years old enrolled in school and those over 25 who have graduated high school.

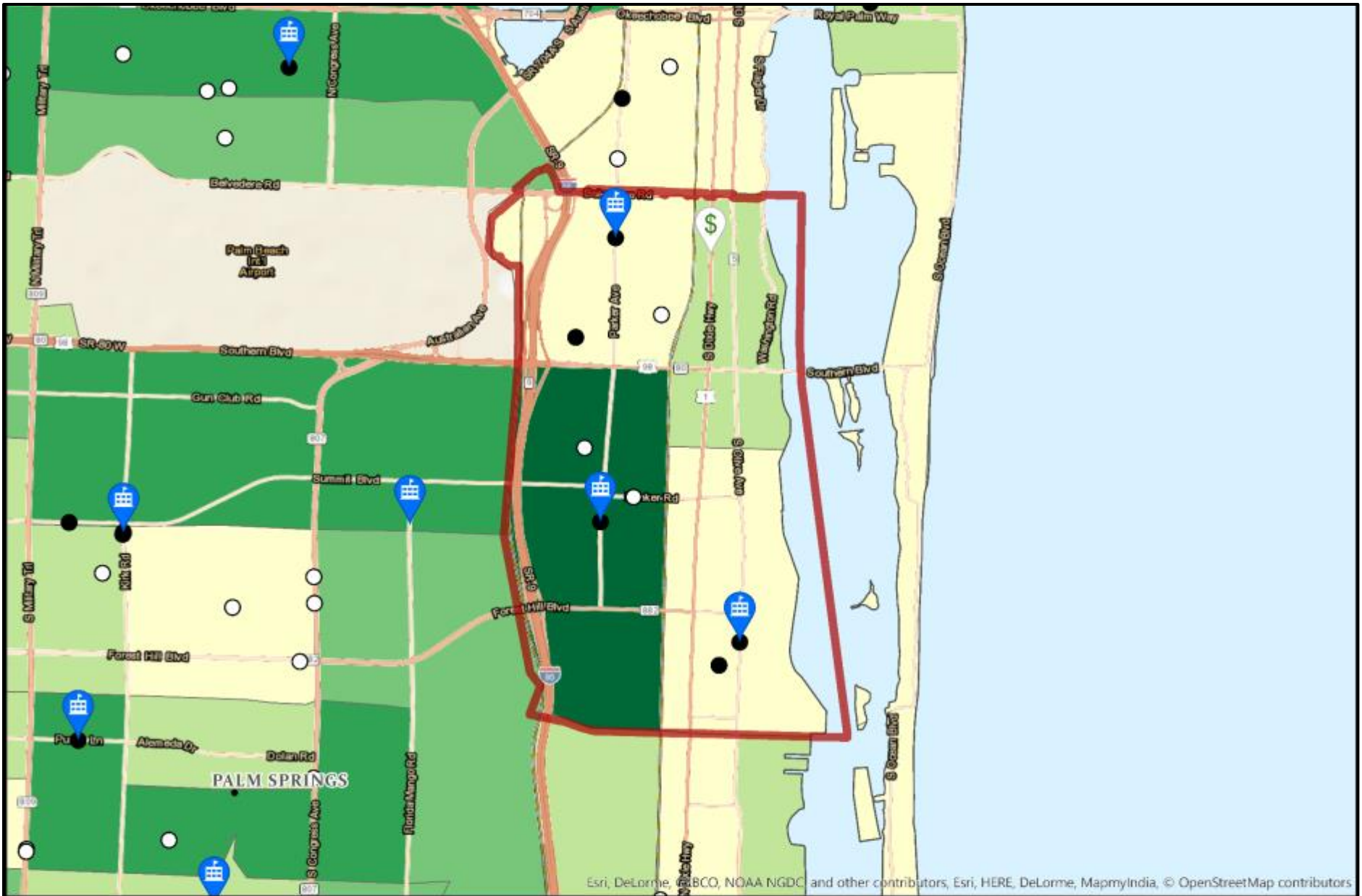
According to the American Community Survey, the population is approximately 88% White, 4% Black and 55% Hispanic. Forty percent (40.4%) of the population in the area is foreign born. The median age of the

population is 39.6 years with 4.7% of the population under age 5 and 22.1% under 19 years old. Only 73% of the population over age 25 has graduated from high school. Looking at three and four year olds, 24.5% of the population is enrolled in school.

The median income for a family is \$46,681 and 22.0% of families live in poverty. The poverty levels are higher for those with children under 5 years at 23.2 % and with children under 18 years at 34.9%. Almost fifty percent of renters are paying 35% or more of their household income on rent. The median home value is \$175,300.

	Zip Code 33405	Palm Beach County
Population, 2015	20,265	1,378,806
White Population	87.8%	75.0%
Black Population	4.3%	18.0%
American Indian and Alaska Native alone	1.6%	0.2%
Asian alone	2.0%	2.5%
Native Hawaiian and Other Pacific Islander alone	0.0%	0.0%
Some other race alone	3.3%	2.2%
Two or more race	1.1%	2.1%
Hispanic	55.4%	21.1%
Foreign Born	40.4%	23.4%
Median Age	39.6	44.1
Median Family Income	\$46,681	\$65,914
Population 3 to 4 year olds Enrolled in School	24.5%	55.6%
High School Graduate (>25 years)	72.6%	87.8%
Uninsured	29.4%	17.5%
Families with Children under 5 in Poverty	23.2%	17.4%
Unemployment	9.5%	9.5%
Children under 5 with a Disability	0%	0.5%
More than 35% of income on rent	49.2%	51.6%

Source: American Community Survey 5 year estimates, 2011-2015



Esri, DeLorme, Garmin, ABCO, NOAA NGDC, and other contributors, Esri, HERE, DeLorme, MapmyIndia, © OpenStreetMap contributors

<p>Number of Families with Children in Poverty</p> <table border="0"> <tr> <td>0-5</td> <td>39-60</td> </tr> <tr> <td>6-19</td> <td>61-100</td> </tr> <tr> <td>20-38</td> <td></td> </tr> </table>	0-5	39-60	6-19	61-100	20-38		<table border="0"> <tr> <td> Elementary School</td> <td> Quality Afterschool Program</td> </tr> <tr> <td> Prosperity Center</td> <td> Quality Early Care Program</td> </tr> </table>	 Elementary School	 Quality Afterschool Program	 Prosperity Center	 Quality Early Care Program	<p>Zipcode 33405</p> <p>0 0.4375 0.875  Miles</p>
0-5	39-60											
6-19	61-100											
20-38												
 Elementary School	 Quality Afterschool Program											
 Prosperity Center	 Quality Early Care Program											

33406 West Palm Beach (Cloud Lake, Glen Ridge, Lake Clarke, Lake Clarke Shores, Palm Springs, West Palm Beach)

Zip code 33406 covers a slightly less than average land area at 8.89 square miles compared to other U.S. zip codes with a population of 26,026 which makes up 1.9% of the population of Palm Beach County. This area has a much higher percentage of Hispanic population, foreign born population and uninsured individuals compared to Palm Beach County. Additionally, lower percentages of children three to four years old enrolled in school.

According to the American Community Survey, the population is approximately 83% White, 11% Black and 50% Hispanic. Thirty-four percent (34.4%) of the population in the area is foreign born. The median age of the

population is 35.6 years with 7.3% of the population under age 5 and 26.5% under 19 years old. About 84% of the population over age 25 has graduated from high school. Looking at three and four year olds, 22.9% of the population is enrolled in school.

The median income for a family is \$48,224 and 16.4% of families live in poverty. The poverty levels are higher for those with children under five years old at 21.4% and with children under 18 years at 23.0%. Fifty-one percent (51.2%) of renters are paying 35% or more of their household income on rent. The median home value is \$141,800.

	Zip Code 33406	Palm Beach County
Population, 2015	26,026	1,378,806
White Population	83.3%	75.0%
Black Population	11.3%	18.0%
American Indian and Alaska Native alone	0.0%	0.2%
Asian alone	1.5%	2.5%
Native Hawaiian and Other Pacific Islander alone	0.5%	0.0%
Some other race alone	1.0%	2.2%
Two or more race	2.4%	2.1%
Hispanic	50.4%	21.1%
Foreign Born	34.4%	23.4%
Median Age	35.6	44.1
Median Family Income	\$48,224	\$65,914
Population 3 to 4 year olds Enrolled in School	22.9%	55.6%
High School Graduate (>25 years)	83.6%	87.8%
Uninsured	25.9%	17.5%
Families with Children under 5 in Poverty	21.4%	17.4%
Unemployment	11.5%	9.5%
Children under 5 with a Disability	0%	0.5%
More than 35% of income on rent	51.2%	51.6%

Source: American Community Survey 5 year estimates, 2011-2015



<p>Number of Families with Children in Poverty</p> <table border="0"> <tr> <td style="background-color: #ffffcc;">0-5</td> <td style="background-color: #90ee90;">39-60</td> </tr> <tr> <td style="background-color: #c8e6c9;">6-19</td> <td style="background-color: #4db6ac;">61-100</td> </tr> <tr> <td style="background-color: #a5d6a7;">20-38</td> <td></td> </tr> </table>	0-5	39-60	6-19	61-100	20-38		<p> BRIDGES</p> <p> Community Action Service Center</p>	<p> Elementary School</p> <p> Health Clinic</p>	<p> Prosperity Center</p> <p> Quality Afterschool Program</p>	<p> Quality Early Care Program</p>	<p>Zipcode 33406</p> <p>0 0.5 1 Miles</p>
0-5	39-60										
6-19	61-100										
20-38											

33407 West Palm Beach (Riviera Beach)

Zip code 33407 has a population of 30,142 and size of 10.07 square miles. With a population of 30,142, it makes up 2.2% of the population of Palm Beach County. This area has a much higher percentage of Black population, and individuals who identify as some other race compared to Palm Beach County. Additionally, there are higher percentages of uninsured, almost double the rate of unemployment and much lower median income. This area is much younger compared to the county.

According to the American Community Survey, the population is 31% White, 60% Black and 16% Hispanic. Almost twenty-five percent (24.2%) of the population in the area is foreign born. The median age of the population is

32.6 years with 9.7% of the population under age 5 and 29.1% under 19 years old. Seventy-six percent (76.4%) of the population over age 25 has graduated from high school. Looking at three and four year olds, 47.9% of the population is enrolled in school.

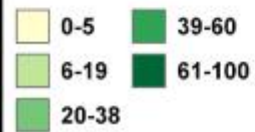
The median income for a family is \$37,750 and 24.6% of families live in poverty. The poverty levels are higher for those with children under five years old at 35.2% and with children under 18 years at 35.7%. Sixty percent (60.6%) of renters are paying 35% or more of their household income on rent. The median home value is 132,100.

	33407	Palm Beach County
Population, 2015	30,142	1,378,806
White Population	31.4%	75.0%
Black Population	60.2%	18.0%
American Indian and Alaska Native alone	0.0%	0.2%
Asian alone	0.3%	2.5%
Native Hawaiian and Other Pacific Islander alone	0.0%	0.0%
Some other race alone	6.9%	2.2%
Two or more race	1.2%	2.1%
Hispanic	16.4%	21.1%
Foreign Born	24.2%	23.4%
Median Age	32.6	44.1
Median Family Income	\$37,750	\$65,914
Population 3 to 4 year olds Enrolled in School	47.9%	55.6%
High School Graduate (>25 years)	76.4%	87.8%
Uninsured	25.6%	17.5%
Families with Children under 5 in Poverty	35.2%	17.4%
Unemployment	17.0%	9.5%
Children under 5 with a Disability	0.2%	0.5%
More than 35% of income on rent	60.6%	51.6%

Source: American Community Survey 5 year estimates, 2011-2015



Number of Families with Children in Poverty



BRIDGES



Elementary School



Hospital



Community Action Service Center



Health Clinic

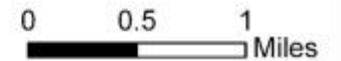


Youth Empowerment Center

● Quality Afterschool Program

○ Quality Early Care Program

Zipcode 33407



Esri, DeLorme, Garmin, IGN, NAVTEQ, and other contributors. Esri, HERE, DeLorme, Mapbox, © OpenStreetMap contributors

33409 West Palm Beach (Haverhill)

Zip code 33409 has a population of 31,118 and size of 6.45 square miles. It makes up 2.3% of the population of Palm Beach County. This area has a higher percentage of Black, Hispanic and foreign born populations compared to Palm Beach County. There is a higher percentage of uninsured individuals and a lower percentage of the population over 25 who have graduated high school.

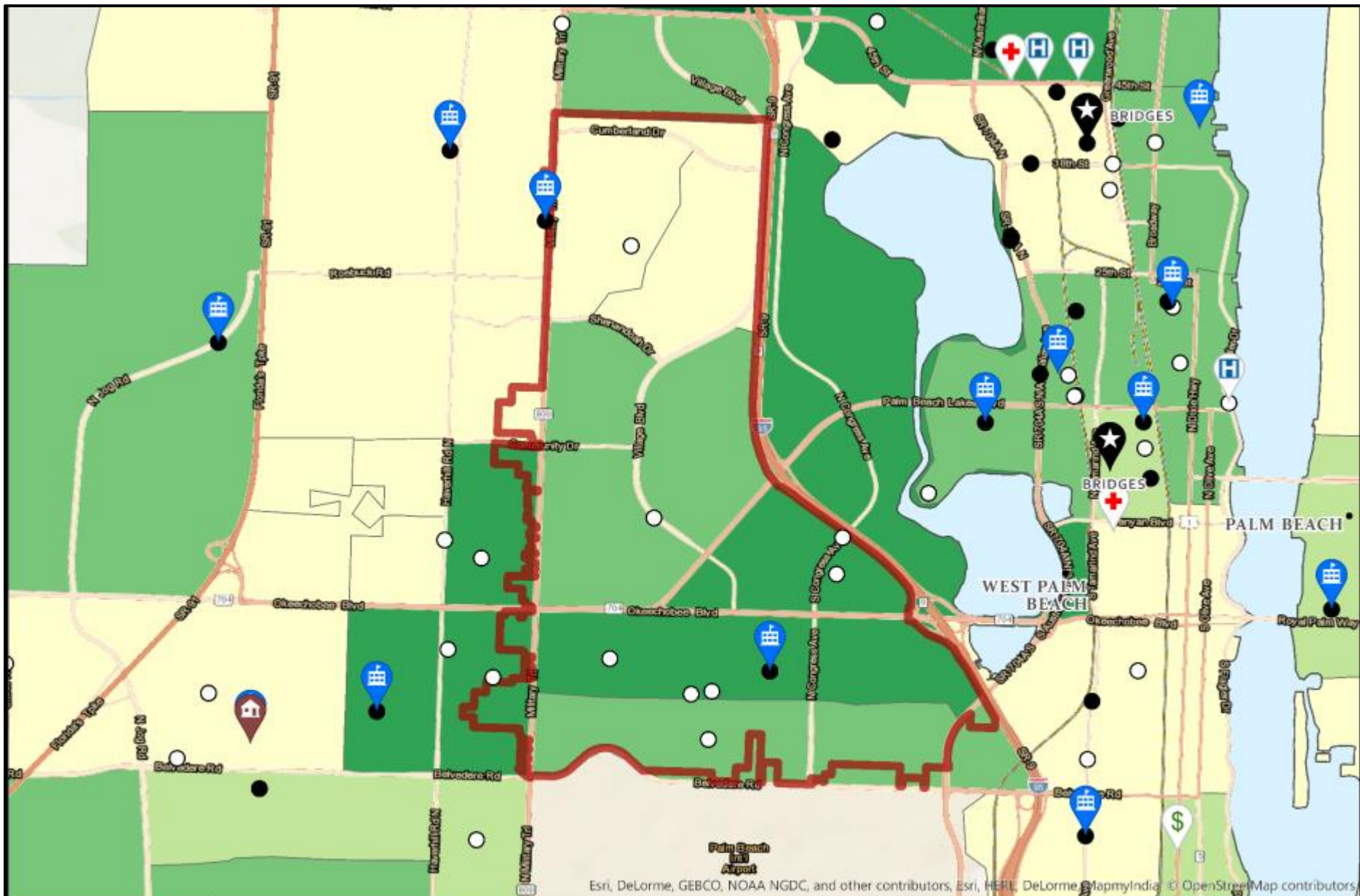
According to the American Community Survey, the population is 54% White, 36% Black and 30% Hispanic. Thirty-three percent (33.4%) of the population in the area is foreign born. The median age of the population is 33.7 years

with 7.9% of the population under age 5 and 26.8% under 19 years old. Eighty-two percent (82.1%) of the population over age 25 has graduated from high school. Looking at three and four year olds, 46.7% of the population is enrolled in school.

The median income for a family is \$43,510 and 17.6% of families live in poverty. The poverty levels are higher for those with children under five years old at 18.3% and with children under 18 years at 27.6%. Forty-six percent (46.6%) of renters are paying 35% or more of their household income on rent. The median home value is \$116,900.

	33409	Palm Beach County
Population, 2015	31,118	1,378,806
White Population	54.3%	75.0%
Black Population	35.5%	18.0%
American Indian and Alaska Native alone	0.1%	0.2%
Asian alone	3.8%	2.5%
Native Hawaiian and Other Pacific Islander alone	0.4%	0.0%
Some other race alone	4.3%	2.2%
Two or more race	1.7%	2.1%
Hispanic	30.3%	21.1%
Foreign Born	33.4%	23.4%
Median Age	33.7	44.1
Median Family Income	\$43,510	\$65,914
Population 3 to 4 year olds Enrolled in School	46.7%	55.6%
High School Graduate (>25 years)	82.1%	87.8%
Uninsured	29.1%	17.5%
Families with Children under 5 in Poverty	18.3%	17.4%
Unemployment	10.1%	9.5%
Children under 5 with a Disability	0.6%	0.5%
More than 35% of income on rent	46.6%	51.6%

Source: American Community Survey 5 year estimates, 2011-2015



Esri, DeLorme, GEBCO, NOAA NGDC, and other contributors, Esri, HERE, DeLorme, MapmyIndia, © OpenStreetMap contributors

<p>Number of Families with Children in Poverty</p> <table border="0"> <tr> <td></td> <td>0-5</td> <td></td> <td>6-19</td> <td></td> <td>39-60</td> <td></td> <td>61-100</td> </tr> <tr> <td></td> <td>20-38</td> <td colspan="6"></td> </tr> </table>		0-5		6-19		39-60		61-100		20-38							<p> BRIDGES</p> <p> Community Action Service Center</p>	<p> Elementary School</p> <p> Health Clinic</p>	<p> Hospital</p> <p> Prosperity Center</p>	<p> Quality Afterschool Program</p> <p> Quality Early Care Program</p>	<p>Zipcode 33409</p> <p>0 0.4575 0.915 Miles</p>
	0-5		6-19		39-60		61-100														
	20-38																				

33415 West Palm Beach (Greenacres, Haverhill, West Palm Beach)

Zip code 33415 covers slightly less land area than other zip codes in the U.S. at 7.40 square miles with a population of 47,651. It makes up 3.5% of the population of Palm Beach County. This area has a much higher percentage of Hispanic population, foreign born population and slightly higher percentage of Asian individuals compared to Palm Beach County.

Additionally, there are lower percentages of children three to four years old enrolled in school, higher percentages of uninsured, lower median incomes and smaller percentage of those over 25 who have graduated high school.

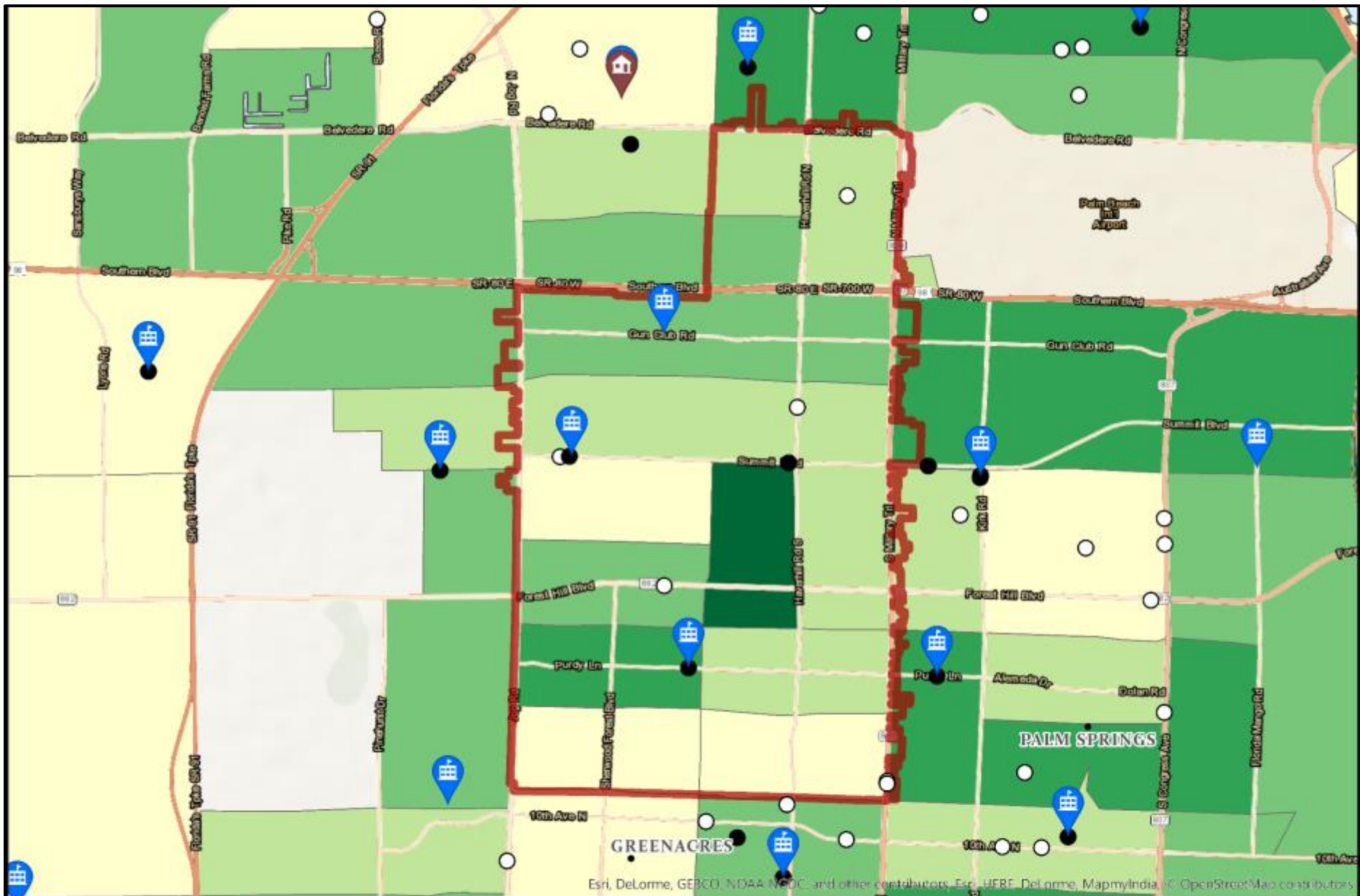
According to the American Community Survey, the population is approximately 75% White, 18% Black and 49% Hispanic. Almost 40% of the

population in the area is foreign born. The median age of the population is 36.3 years with 7.4% of the population under age 5 and 27.1% under 19 years old. Only 77% of the population over age 25 has graduated from high school. Looking at three and four year olds, 39.1% of the population is enrolled in school.

The median income for a family is \$40,995 and 19.3% of families live in poverty. The poverty levels are higher for those with children under five years at 28.2% and with children under 18 years at 27.3%. Fifty-five percent of renters are paying 35% or more of their household income on rent. The median home value is \$78,100.

	Zip Code 33415	Palm Beach County
Population, 2015	47,651	1,378,806
White Population	74.7%	75.0%
Black Population	17.7%	18.0%
American Indian and Alaska Native alone	0.1%	0.2%
Asian alone	1.5%	2.5%
Native Hawaiian and Other Pacific Islander alone	0.0%	0.0%
Some other race alone	2.5%	2.2%
Two or more race	3.5%	2.1%
Hispanic	48.9%	21.1%
Foreign Born	39.1%	23.4%
Median Age	36.3	44.1
Median Family Income	\$40,995	\$65,914
Population 3 to 4 year olds Enrolled in School	39.1%	55.6%
High School Graduate (>25 years)	77.0%	87.8%
Uninsured	30.8%	17.5%
Families with Children under 5 in Poverty	28.2%	17.4%
Unemployment	14.1%	9.5%
Children under 5 with a Disability	0.6%	0.5%
More than 35% of income on rent	55.1%	51.6%

Source: American Community Survey 5 year estimates, 2011-2015



Esri, DeLorme, GEBCO, NOAA, NODC, and other contributors, Esri, HERE, DeLorme, MapmyIndia, © OpenStreetMap contributors

<p>Number of Families with Children in Poverty</p> <ul style="list-style-type: none"> 0-5 6-19 20-38 39-60 61-100 	<ul style="list-style-type: none"> Community Action Service Center Elementary School 	<ul style="list-style-type: none"> Quality Afterschool Program Quality Early Care Program 	<p>Zipcode 33415</p> <p>0 0.4575 0.915 Miles</p>
---	--	---	---

33417 West Palm Beach (Haverhill, West Palm Beach)

Zip code 33417 in central Palm Beach County is 6.72 square miles. It has a population of 32,478, which makes up 2.4% of the population of the county. This area has a higher percentage of Black population and foreign born population compared to Palm Beach County. Additionally, this area has a lower median income.

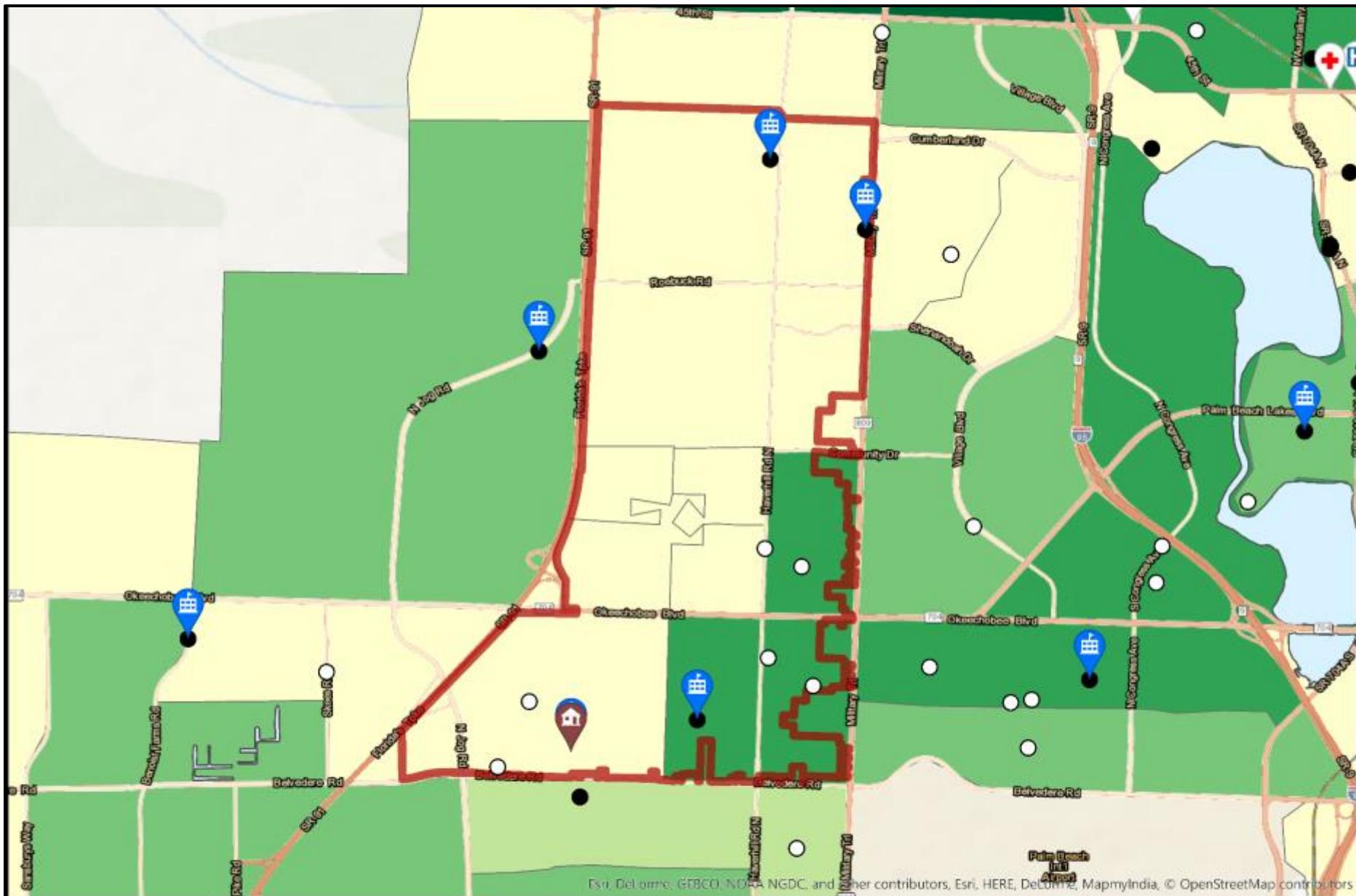
According to the American Community Survey, the population is approximately 60% White, 33% Black and 25% Hispanic. Almost 32% of the population in the area is foreign born. The median age of the population is 45 years with 6.3% of the population under age 5 and 22.3% under 19 years

old. About 81% of the population over age 25 has graduated from high school. Looking at three and four year olds, 62.5% of the population is enrolled in school.

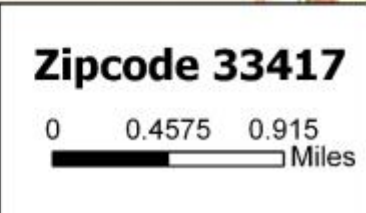
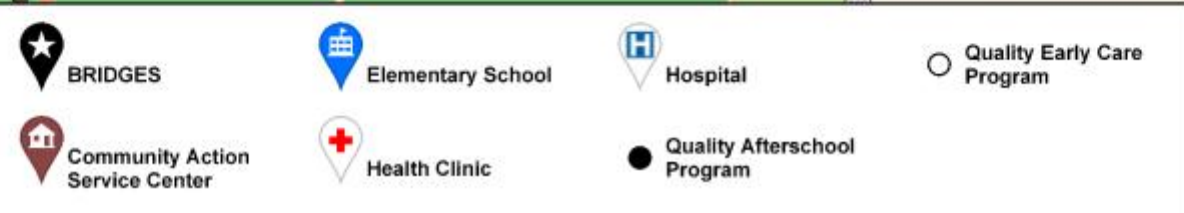
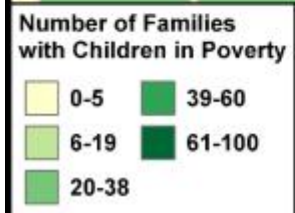
The median income for a family is \$41,786 and 19.6% of families live in poverty. The poverty levels are lower for those with children under five years old at 15.0%; for families with children under 18 years at 30.3%. Over 58% of renters are paying 35% or more of their household income on rent. The median home value is \$62,300.

	Zip Code 33417	Palm Beach County
Population, 2015	32,478	1,378,806
White Population	59.5%	75.0%
Black Population	32.6%	18.0%
American Indian and Alaska Native alone	0.6%	0.2%
Asian alone	2.3%	2.5%
Native Hawaiian and Other Pacific Islander alone	0.0%	0.0%
Some other race alone	1.8%	2.2%
Two or more race	3.2%	2.1%
Hispanic	24.8%	21.1%
Foreign Born	31.7%	23.4%
Median Age	45.0	44.1
Median Family Income	\$41,786	\$65,914
Population 3 to 4 year olds Enrolled in School	62.5%	55.6%
High School Graduate (>25 years)	80.7%	87.8%
Uninsured	24.6%	17.5%
Families with Children under 5 in Poverty	15.0%	17.4%
Unemployment	13.9%	9.5%
Children under 5 with a Disability	0.7%	0.5%
More than 35% of income on rent	58.3%	51.6%

Source: American Community Survey 5 year estimates, 2011-2015



Esri, DeLorme, GEBCO, NOAA, NGDC, and other contributors, Esri, HERE, DeLorme, MapmyIndia, © OpenStreetMap contributors



33430 Belle Glade

Zip code 33430 has a population of 21,118 and a size of 113.74 square miles. It makes up 1.5% of the population of Palm Beach County. This area has a much higher percentage of Black population and higher percentages of Hispanic population compared to Palm Beach County. Additionally, this area has a much lower median family income.

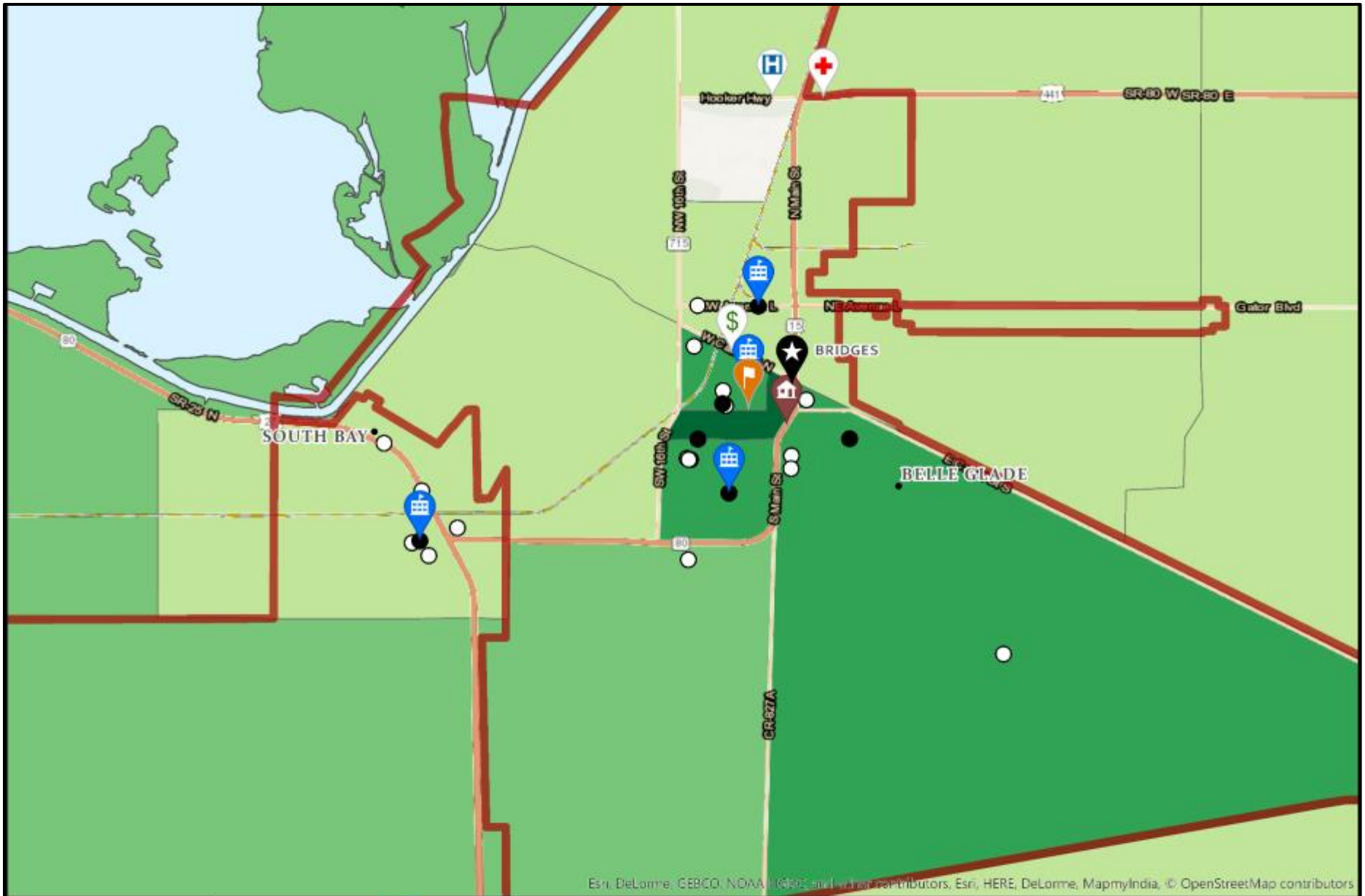
33493 South Bay

Zip code 33493 has a population of 5,306 and size at 62.11 square miles. It makes up 0.4% of the population of Palm Beach County. This area has a much higher percentage of Black population and a slightly higher percentage of Hispanic population compared to Palm Beach County. Additionally, this area has a much lower median family income and almost two times the unemployment rate.

See Chart Narrative on page 46

	33430	33493	Palm Beach County
Population, 2015	21,128	5,306	1,378,806
White Population	40.0%	39.0%	75.0%
Black Population	56.1%	55.0%	18.0%
American Indian and Alaska Native alone	0.0%	0.0%	0.2%
Asian alone	0.4%	0.3%	2.5%
Native Hawaiian and Other Pacific Islander alone	0.0%	0.2%	0.0%
Some other race alone	2.0%	2.4%	2.2%
Two or more race	1.4%	3.2%	2.1%
Hispanic	32.4%	25.7%	21.1%
Foreign Born	28.4%	16.5%	23.4%
Median Age	32.6	35.8	44.1
Median Family Income	\$35,018	\$31,429	\$65,914
Population 3 to 4 year olds Enrolled in School	59.6%	100%	55.6%
High School Graduate (>25 years)	62.7%	61.8%	87.8%
Uninsured	24.2%	17.0%	17.5%
Families with Children under 5 in Poverty	36.1%	43.2%	17.4%
Unemployment	19.0%	17.1%	9.5%
Children under 5 with a Disability	0%	0%	0.5%
More than 35% of income on rent	49.8%	37.1%	51.6%

Source: American Community Survey 5 year estimates, 2011-2015



Esri, DeLorme, GEBCO, NOAA, IGN, CNR, © OpenStreetMap contributors, Esri, HERE, DeLorme, MapmyIndia, © OpenStreetMap contributors

<p>Number of Families with Children in Poverty</p> <ul style="list-style-type: none"> 0-5 6-19 20-38 39-60 61-100 	<ul style="list-style-type: none">  BRIDGES  Community Action Service Center 	<ul style="list-style-type: none">  Elementary School  Health Clinic 	<ul style="list-style-type: none">  Hospital  Prosperity Center 	<ul style="list-style-type: none">  Youth Empowerment Center  Quality Afterschool Program 	<ul style="list-style-type: none">  Quality Early Care Program 	<p>Zipcode 33430 & 33493</p> <p>0 0.725 1.45  Miles</p>
--	--	--	---	---	--	--

33435 Boynton Beach (Briny Breezes, Ocean Ridge)

Zip code 33435 has a population of 34,193 and a size of 6.58 square miles. It makes up 2.5% of the population of Palm Beach County. This area has a much higher percentage of Black population, a slightly higher foreign born population and lower percentages of Hispanic population compared to Palm Beach County. The area has a lower percentage of population over 25 years old who have graduated from high school and a higher percentage of unemployment.

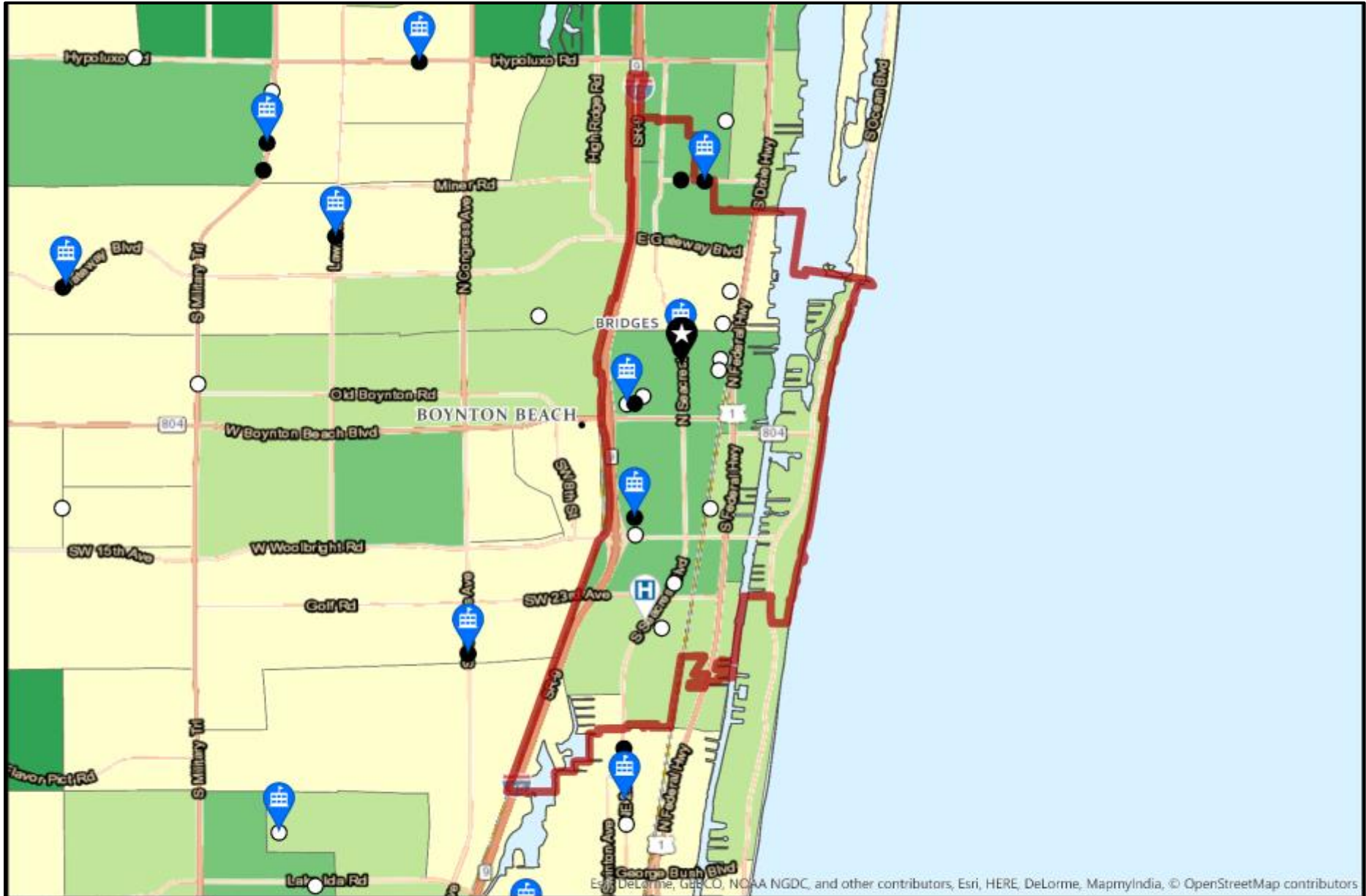
According to the American Community Survey, the population is 52% White, 41% Black and 13% Hispanic. Almost twenty-five percent (24.5%) of the population in the area is foreign born. The median age of the population is

42.0 years with 5.6% of the population under age 5 and 21.4% under 19 years old. Only 62.7% of the population over age 25 has graduated from high school. Looking at three and four year olds, 55.9% of the population is enrolled in school.

The median income for a family is \$43,214 and 18.2% of families live in poverty. The poverty levels are higher for those with children under five years old at 23.8% and with children under 18 years at 29.0%. Almost fifty-nine percent (58.5%) of renters are paying 35% or more of their household income on rent. The median home value is \$115,900.

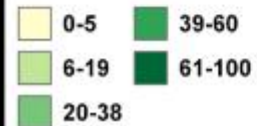
	33435	Palm Beach County
Population, 2015	34,193	1,378,806
White Population	52.4%	75.0%
Black Population	40.6%	18.0%
American Indian and Alaska Native alone	0.1%	0.2%
Asian alone	1.9%	2.5%
Native Hawaiian and Other Pacific Islander alone	0.0%	0.0%
Some other race alone	3.8%	2.2%
Two or more race	1.1%	2.1%
Hispanic	12.8%	21.1%
Foreign Born	24.5%	23.4%
Median Age	42.0	44.1
Median Family Income	\$43,214	\$65,914
Population 3 to 4 year olds Enrolled in School	55.9%	55.6%
High School Graduate (>25 years)	62.7%	87.8%
Uninsured	23.9%	17.5%
Families with Children under 5 in Poverty	23.8%	17.4%
Unemployment	14.1%	9.5%
Children under 5 with a Disability	0.4%	0.5%
More than 35% of income on rent	58.5%	51.6%

Source: American Community Survey 5 year estimates, 2011-2015



Esri, DeLorme, GeoBCO, NOAA NGDC, and other contributors, Esri, HERE, DeLorme, MapmyIndia, © OpenStreetMap contributors

Number of Families with Children in Poverty



BRIDGES



Hospital



Quality Early Care Program



Elementary School



Quality Afterschool Program

Zipcode 33435



33438 Canal Point (Bryant)

Zip code 33438 in western Palm Beach County has a population of 304 individuals and a size of 21.10 square miles. It makes up less than 1% of the population of Palm Beach County. This area has a very high percentage of individuals who are two or more races, slightly higher percentage of Black population and slightly higher percentages of Hispanic population compared to Palm Beach County. Additionally, this area has a much lower in median family income and the unemployment rate is extremely high; however, the population in this area is very small.

33476 Pahokee

Zip code 33476 in western Palm Beach County has a population of 8,133 and a size of 26.26 square miles. It makes up 0.6% of the population. This area has a much higher percentage of Black population, slightly higher percentage of Hispanics and three times the rate of unemployment compared to Palm Beach County. Additionally, almost 50% of the families with children under five years are in poverty.

See Chart Narrative on page 46

	33438	33476	Palm Beach County
Population, 2015	304	8,113	1,378,806
White Population	54.3%	32.6%	75.0%
Black Population	23.4%	62.4%	18.0%
American Indian and Alaska Native alone	0.0%	0.0%	0.2%
Asian alone	0.0%	0.0%	2.5%
Native Hawaiian and Other Pacific Islander alone	0.0%	0.0%	0.0%
Some other race alone	2.3%	3.4%	2.2%
Two or more race	20.1%	1.6%	2.1%
Hispanic	27.3%	26.5%	21.1%
Foreign Born	8.2%	19.3%	23.4%
Median Age	54.7	34.0	44.1
Median Family Income	\$37,039	\$30,809	\$65,914
Population 3 to 4 year olds Enrolled in School	100%	42.9%	55.6%
High School Graduate (>25 years)	92.7%	60.8%	87.8%
Uninsured	7.2%	23.1%	17.5%
Families with Children under 5 in Poverty	-	48.1%	17.4%
Unemployment	34.0%	30.9%	9.5%
Children under 5 with a Disability	0.0%	0.0%	0.5%
More than 35% of income on rent	60.0%	41.4%	51.6%

Source: American Community Survey 5 year estimates, 2011-2015



Esri, DeLorme, GEBCO, NOAA/NGDC, and other contributors; Esri, HERE, DeLorme, MapmyIndia, © OpenStreetMap contributors

<p>Number of Families with Children in Poverty</p> <table border="0"> <tr> <td>0-5</td> <td>39-60</td> </tr> <tr> <td>6-19</td> <td>61-100</td> </tr> <tr> <td>20-38</td> <td></td> </tr> </table>	0-5	39-60	6-19	61-100	20-38		<p>★ BRIDGES</p> <p>🏫 Elementary School</p>	<p>● Quality Afterschool Program</p> <p>○ Quality Early Care Program</p>	<p>Zipcode 33438 & 33476</p> <p>0 0.46 0.92 Miles</p>
0-5	39-60								
6-19	61-100								
20-38									

33444 Delray Beach

Zip code 33444 in southeastern Palm Beach County has a population of 22,440 and a size of 5.03 square miles. It makes up 1.6% of the population. This area has a higher percentage of Black residents and a higher percentage of individuals who identify as some other race compared to Palm Beach County. Additionally, the area has a lower percentage of population over 25 years old who have graduated from high school.

According to the American Community Survey, the population is approximately 45% White, 48% Black and 13% Hispanic. The median age of the population is 39.4 years with 6.3% of the population under age 5 and

21.6% under 19 years old. Only 76% of the population over age 25 has graduated from high school. Looking at three and four year olds, 47.4% of the population is enrolled in school.

The median income for a family is \$46,032 and 19.6% of families live in poverty. The poverty levels are higher for those with children under five years old at 26.6% and with children under 18 years at 27.8%. The majority of renters at 51.2% are paying 35% or more of their household income on rent. The median home value is \$182,400.

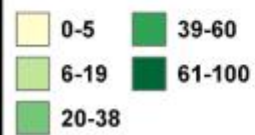
	Zip Code 33444	Palm Beach County
Population, 2015	22,440	1,378,806
White Population	44.9%	75.0%
Black Population	48.2%	18.0%
American Indian and Alaska Native alone	0.0%	0.2%
Asian alone	0.6%	2.5%
Native Hawaiian and Other Pacific Islander alone	0.0%	0.0%
Some other race alone	4.7%	2.2%
Two or more race	1.5%	2.1%
Hispanic	12.5%	21.1%
Foreign Born	23.9%	23.4%
Median Age	39.4	44.1
Median Family Income	\$46,032	\$65,914
Population 3 to 4 year olds Enrolled in School	47.4%	55.6%
High School Graduate (>25 years)	76.3%	87.8%
Uninsured	24.0%	17.5%
Families with Children under 5 in Poverty	26.6%	17.4%
Unemployment	14.4%	9.5%
Children under 5 with a Disability	0.0%	0.5%
More than 35% of income on rent	51.2%	51.6%

NA – Data not available



Esri, DeLorme, GEBCO, NOAA, NCEC, and other contributors, Esri, HERE, DeLorme, MapmyIndia, © OpenStreetMap contributors

Number of Families with Children in Poverty



Community Action Service Center



Health Clinic



Elementary School



Hospital

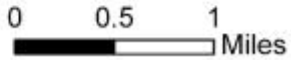


Quality Afterschool Program



Quality Early Care Program

Zipcode 33444



33460 Lake Worth (Lantana)

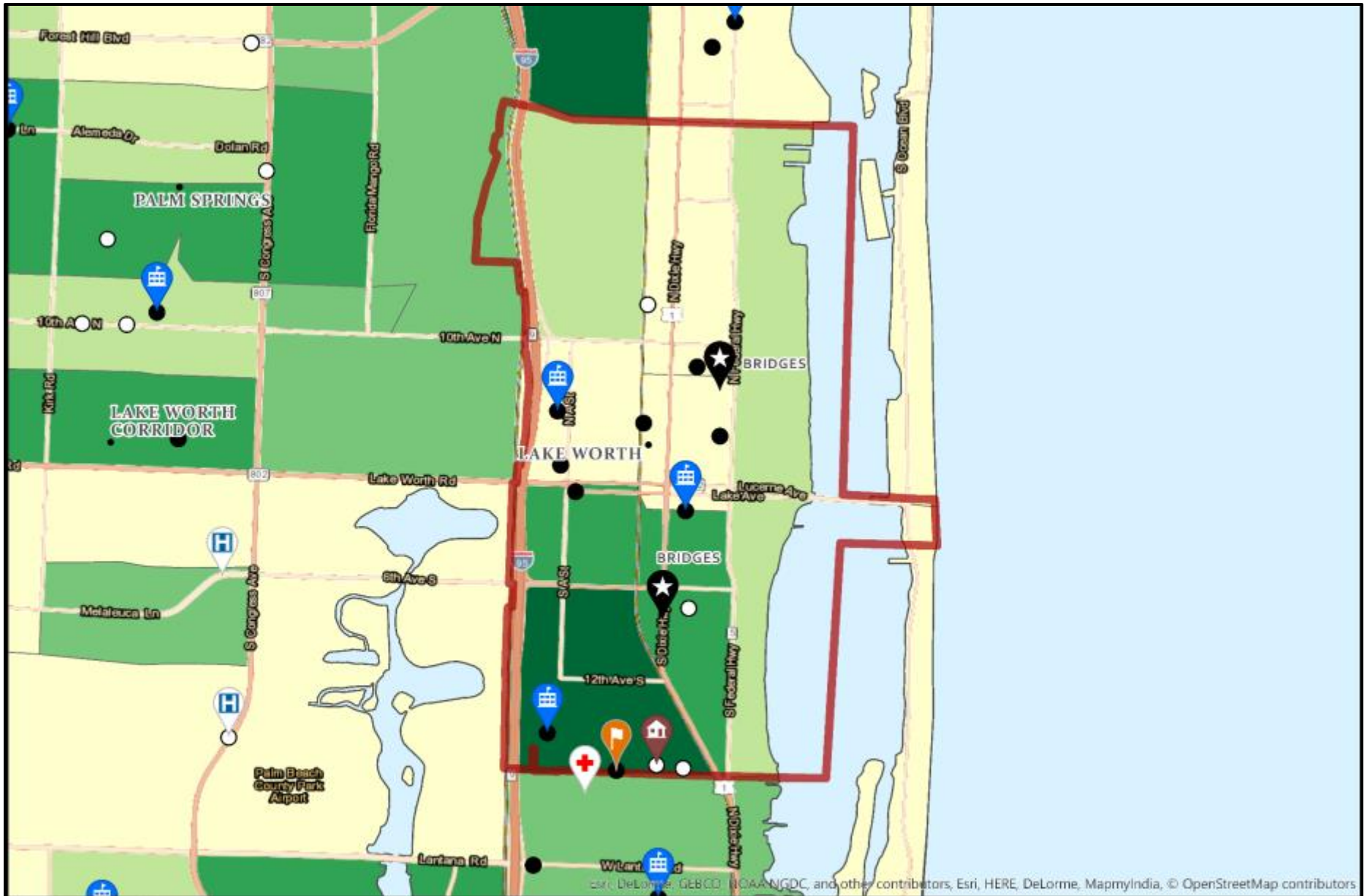
Zip code 33460 has a population of 31,740 and a size of 4.69 square miles. It makes up 2.3% of the population of Palm Beach County. This area has a higher percentage of Hispanic population, foreign born population and uninsured individuals compared to Palm Beach County. Additionally, it has a lower percentages of children three to four years old enrolled in school, lower median incomes and smaller percentage of those over 25 who have graduated high school.

According to the American Community Survey, the population is 71% White, 22% Black and 41% Hispanic. Thirty-five percent (35.4%) of the population in the area is foreign born. The median age of the population is 35.4 years with

6.7% of the population under age 5 and 25.0% under 19 years old. Seventy percent (70.1%) of the population over age 25 has graduated from high school. Looking at three and four year olds, 38.5% of the population is enrolled in school.

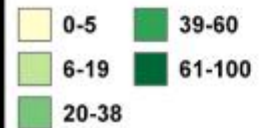
The median income for a family is \$40,857 and 24.1% of families live in poverty. The poverty levels are higher for those with children under five years old at 33.4% and with children under 18 years at 38.2%. Fifty-seven percent of renters are paying 35% or more of their household income on rent. The median home value is \$138,100.

	33460	Palm Beach County
Population, 2015	31,740	1,378,806
White Population	70.8%	75.0%
Black Population	21.6%	18.0%
American Indian and Alaska Native alone	1.1%	0.2%
Asian alone	1.6%	2.5%
Native Hawaiian and Other Pacific Islander alone	0.0%	0.0%
Some other race alone	2.1%	2.2%
Two or more race	2.8%	2.1%
Hispanic	40.5%	21.1%
Foreign Born	35.4%	23.4%
Median Age	35.4	44.1
Median Family Income	\$40,857	\$65,914
Population 3 to 4 year olds Enrolled in School	38.5%	55.6%
High School Graduate (>25 years)	70.1%	87.8%
Uninsured	36.6%	17.5%
Families with Children under 5 in Poverty	33.4%	17.4%
Unemployment	12.4%	9.5%
Children under 5 with a Disability	0.5%	0.5%
More than 35% of income on rent	57.0%	51.6%



Map data © OpenStreetMap contributors, Esri, HERE, DeLorme, MapmyIndia, © OpenStreetMap contributors, and other contributors, CC-BY, Imagery © Mapbox, © OpenStreetMap contributors, and other contributors, CC-BY, Imagery © Mapbox

Number of Families with Children in Poverty



BRIDGES



Elementary School



Hospital



Youth Empowerment Center



Community Action Service Center



Health Clinic

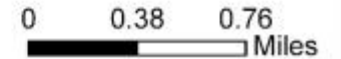


Quality Early Care Program



Quality Afterschool Program

Zipcode 33460



33461 Lake Worth (Palm Springs)

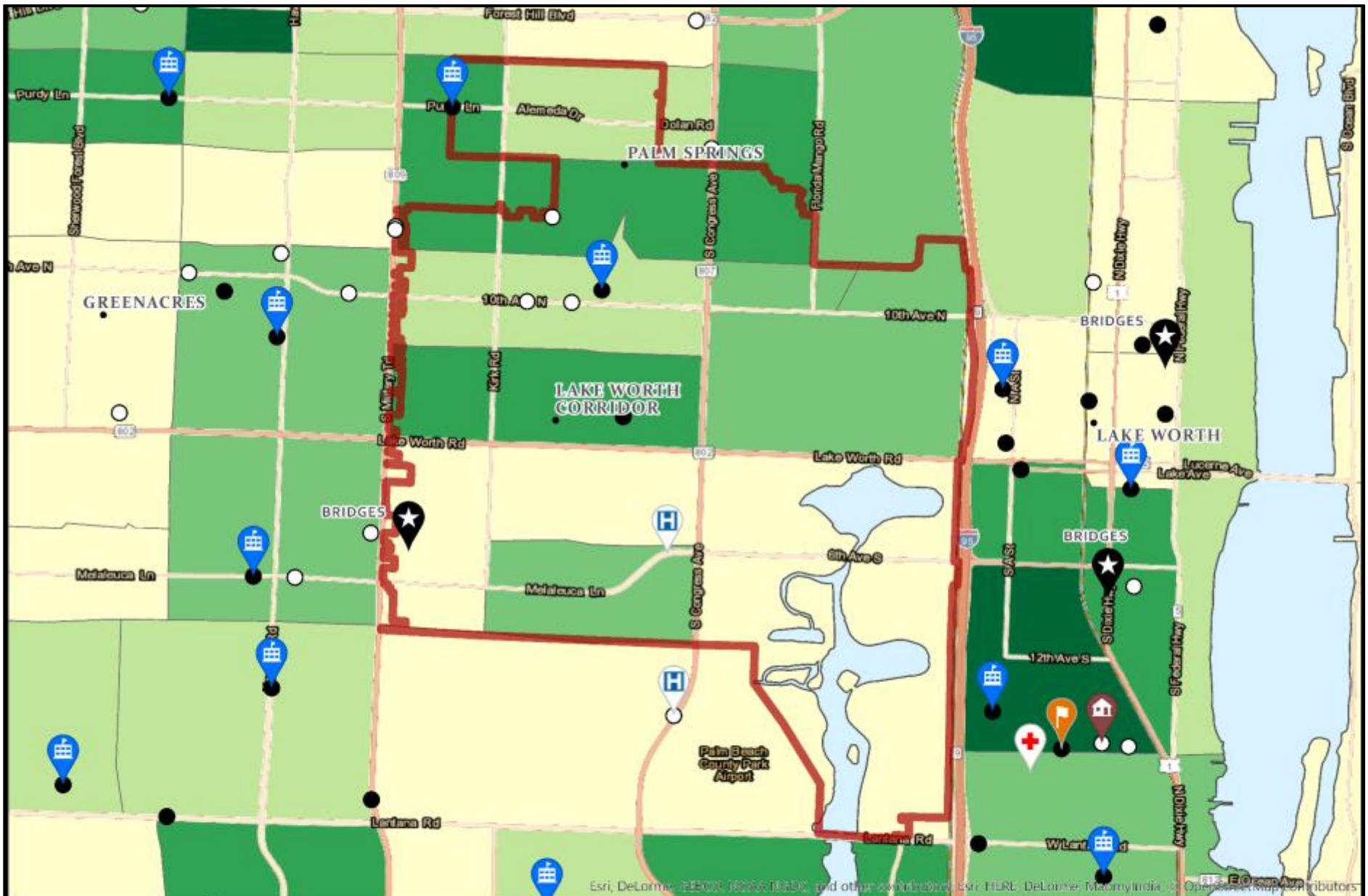
Zip code 33461 has a population of 43,353 and a size of 7.25 square miles. It makes up 3.1% of the population of Palm Beach County. This area has a much higher percentage of Hispanic population, foreign born population and uninsured individuals compared to Palm Beach County. Additionally, there are lower percentage of children three to four years olds enrolled in school, lower median incomes and smaller percentage of those over 25 who have graduated high school. More renters within this area are housing burdened spending over 35% of income on rent compared to the county.

According to the American Community Survey, the population is 77% White, 15% Black and 53% Hispanic. Thirty-nine percent (39.4%) of the

population in the area is foreign born. The median age of the population is 33.2 years with 7.8% of the population under age 5 and 28.0% under 19 years old. Approximately 70.8 % of the population over age 25 has graduated from high school. Looking at three and four year olds, 32.4% of the population is enrolled in school.

The median income for a family is \$36,767 and 24.0% of families live in poverty. The poverty levels are higher for those with children under five years at 22.5% and with children under 18 years at 34.6%. Sixty-one percent (61.1%) of renters are paying 35% or more of their household income on rent. The median home value is \$89,700.

	33461	Palm Beach County
Population, 2015	43,353	1,378,806
White Population	76.8%	75.0%
Black Population	15.2%	18.0%
American Indian and Alaska Native alone	0.1%	0.2%
Asian alone	1.0%	2.5%
Native Hawaiian and Other Pacific Islander alone	0.0%	0.0%
Some other race alone	3.4%	2.2%
Two or more race	3.5%	2.1%
Hispanic	53.2%	21.1%
Foreign Born	39.4%	23.4%
Median Age	34.2	44.1
Median Family Income	\$36,767	\$65,914
Population 3 to 4 year olds Enrolled in School	32.4%	55.6%
High School Graduate (>25 years)	70.9%	87.8%
Uninsured	33.7%	17.5%
Families with Children under 5 in Poverty	22.5%	17.4%
Unemployment	11.7%	9.5%
Children under 5 with a Disability	0.0%	0.5%
More than 35% of income on rent	61.1%	51.6%



<p>Number of Families with Children in Poverty</p> <ul style="list-style-type: none"> 0-5 6-19 20-38 39-60 61-100 	<ul style="list-style-type: none"> BRIDGES Community Action Service Center 	<ul style="list-style-type: none"> Elementary School Health Clinic 	<ul style="list-style-type: none"> Hospital Youth Empowerment Center 	<ul style="list-style-type: none"> Quality Afterschool Program Quality Early Care Program 	<p>Zipcode 33461</p> <p>0 0.335 0.67 Miles</p>
---	--	--	--	---	---

33462 Lake Worth

Zip code 33462 has a population of 33,197 and a size of 8.77 square miles. It makes up 2.4% of the population of Palm Beach County. This area is very similar to the racial and ethnic distribution of Palm Beach County, with a slightly higher foreign born population. Additionally, it has a higher percentage of children with a disability.

According to the American Community Survey, the population is 71% White, 24% Black and 23% Hispanic. Twenty-six percent (26.2%) of the population in the area is foreign born. The median age of the population is 40.6 years with 5.8% of the population under age 5 and 23.5% under 19 years old.

Approximately 81.8% of the population over age 25 has graduated from high school. Looking at three and four year olds, 60.6% of the population is enrolled in school.

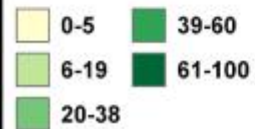
The median income for a family is \$53,835 and 15.1% of families live in poverty. The poverty levels are higher for those with children under five years at 28.3% and with children under 18 years at 21.0%. Almost fifty-three percent (52.0%) of renters are paying 35% or more of their household income on rent.

	33462	Palm Beach County
Population, 2015	33,197	1,378,806
White Population	71.1%	75.0%
Black Population	23.5%	18.0%
American Indian and Alaska Native alone	0.1%	0.2%
Asian alone	1.1%	2.5%
Native Hawaiian and Other Pacific Islander alone	0.1%	0.0%
Some other race alone	0.6%	2.2%
Two or more race	3.4%	2.1%
Hispanic	22.9%	21.1%
Foreign Born	26.2%	23.4%
Median Age	40.6	44.1
Median Family Income	\$53,835	\$65,914
Population 3 to 4 year olds Enrolled in School	60.6%	55.6%
High School Graduate (>25 years)	81.8%	87.8%
Uninsured	23.9%	17.5%
Families with Children under 5 in Poverty	28.3%	17.4%
Unemployment	13.1%	9.5%
Children under 5 with a Disability	3.0%	0.5%
More than 35% of income on rent	52.0%	51.6%



Esri, DeLorme, GEBCO, NOAA, NGDC, and other contributors, Esri, HERE, DeLorme, MapmyIndia, © OpenStreetMap contributors

Number of Families with Children in Poverty



BRIDGES



Elementary School



Hospital



Community Action Service Center



Health Clinic

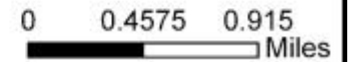


Youth Empowerment Center

● Quality Afterschool Program

○ Quality Early Care Program

Zipcode 33462



33463 Lake Worth (Greenacres)

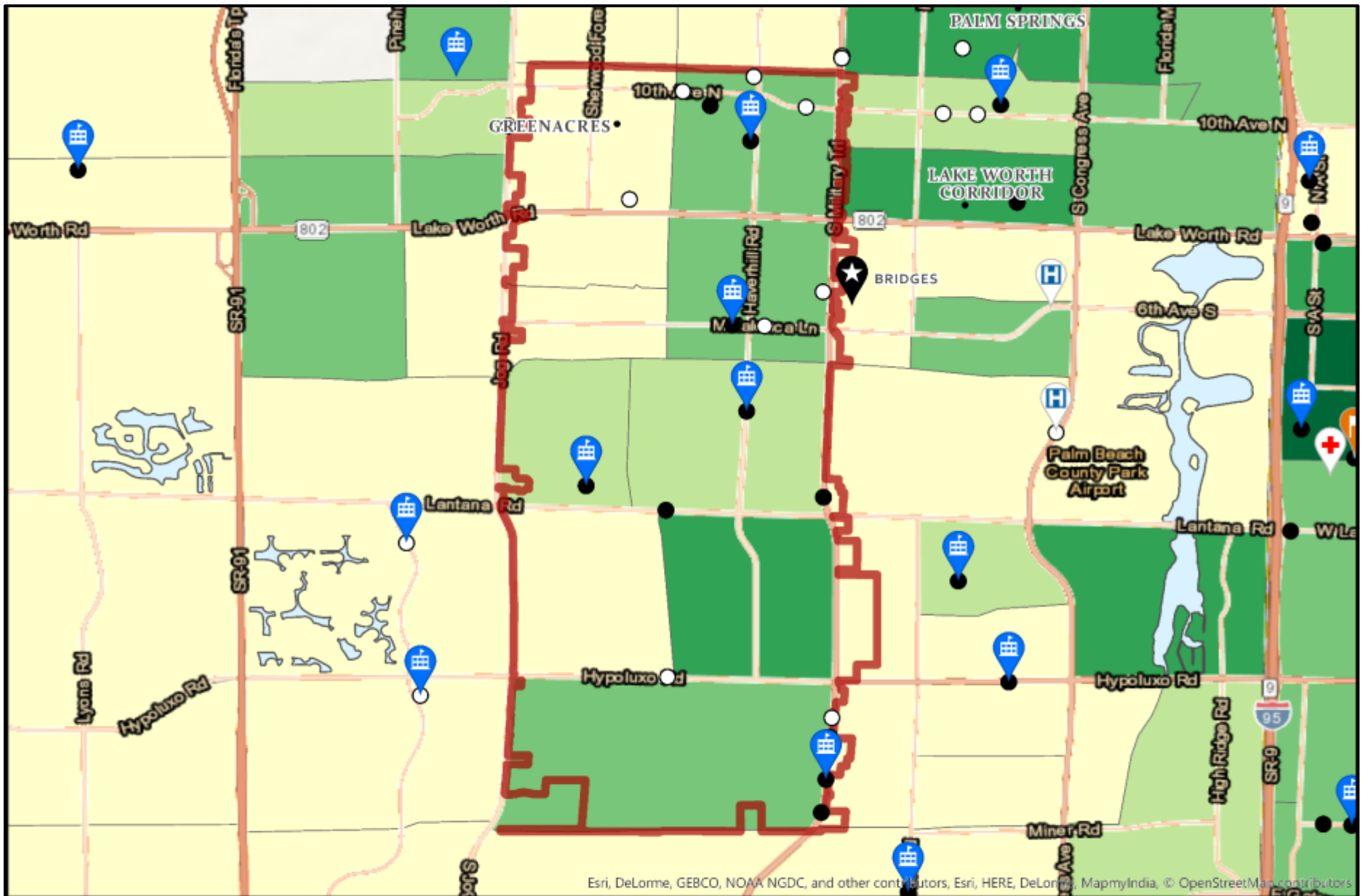
Zip code 33463 spans 10.74 square miles and has a population of 57,691, which makes up 4.2% of the population of Palm Beach County. This area has a slightly higher percentage of Black population and a higher percentage of Hispanic population compared to Palm Beach County. In this area over 50% of the population is foreign born. Additionally, there is a higher percentage of uninsured individuals.

According to the American Community Survey, the population is approximately 65% White, 26% Black and 38% Hispanic. Over 36% of the population in the area is foreign born. The median age of the population is

34 years with 7.3% of the population under age 5 and 30.6% under 19 years old. Almost 80% of the population over age 25 has graduated from high school. Looking at three and four year olds, 58.4% of the population is enrolled in school.

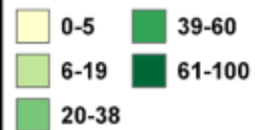
The median income for a family is \$53,877 and 15.0% of families live in poverty. The poverty levels are lower for those with children under 5 years at 13.0% and higher for families with children under 18 years at 21.2%. Over 47% of renters are paying 35% or more of their household income on rent. The median home value is \$133,900.

	Zip Code 33463	Palm Beach County
Population, 2015	57,691	1,378,806
White Population	64.9%	75.0%
Black Population	25.8%	18.0%
American Indian and Alaska Native alone	0.3%	0.2%
Asian alone	3.6%	2.5%
Native Hawaiian and Other Pacific Islander alone	0.0%	0.0%
Some other race alone	2.4%	2.2%
Two or more race	3.1%	2.1%
Hispanic	37.7%	21.1%
Foreign Born	36.6%	23.4%
Median Age	34.0	44.1
Median Family Income	\$53,877	\$65,914
Population 3 to 4 year olds Enrolled in School	58.4%	55.6%
High School Graduate (>25 years)	79.3%	87.8%
Uninsured	28.6%	17.5%
Families with Children under 5 in Poverty	13.0%	17.4%
Unemployment	11.5%	9.5%
Children under 5 with a Disability	0.9%	0.5%
More than 35% of income on rent	47.5%	51.6%



Esri, DeLorme, GEBCO, NOAA NGDC, and other contributors, Esri, HERE, DeLorme, MapmyIndia, © OpenStreetMap contributors

Number of Families with Children in Poverty



BRIDGES



Elementary School



Hospital



Community Action Service Center



Health Clinic



Youth Empowerment Center

● Quality Afterschool Program

○ Quality Early Care Program

Zipcode 33463

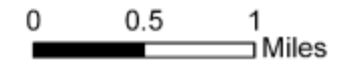


Chart Narratives Continued

33430 Belle Glade

According to the American Community Survey, the population is 40% White, 56% Black and 32% Hispanic. Twenty-eight percent (28.4%) of the population in the area is foreign born. The median age of the population is 32.6 years with 8.2% of the population under age 5 and 29.6% under 19 years old. Approximately 62.7% of the population over age 25 has graduated from high school. Looking at three and four year olds, 59.6% of the population is enrolled in school. The median income for a family is \$35,081 and 29.4% of families live in poverty. The poverty levels are higher for those with children under five years old at 36.1% and with children under 18 years at 39.5%. Almost fifty percent (49.8%) of renters are paying 35% or more of their household income on rent. The median home value is \$93,300.

33493 South Bay

According to the American Community Survey, the population is 39% White, 55% Black and 26% Hispanic. Almost seventeen percent (16.5%) of the population in the area is foreign born. The median age of the population is 35.8 years with 3.5% of the population under five years old and 16.9% under 19 years old. Approximately 61.8% of the population over age 25 has graduated from high school. Looking at three and four year olds, 100% of the population is enrolled in school. The median income for a family is \$31,429 and 35.3% of families live in poverty. The poverty levels are higher for those with children under 5 years at 43.2% and with children under 18 years at 42.8%. Thirty-seven percent (37.1%) of renters are paying 35% or more of their household income on rent.

33438 Canal Point

According to the American Community Survey, the population is 54% White, 23% Black, 20% two or more races and 27% Hispanic. Only eight percent (8.2%) of the population in the area is foreign born. The median age of the population is 54.7 years with 6.3% of the population under five years old and 9.3% under 19 years old. Approximately 92.7% of the population over age 25 has graduated from high school. Looking at three and four year olds, 100% of the population is enrolled in school. The median income for a family is \$37,039 and 15.4% of families live in poverty. The poverty levels for

those with children under 5 years cannot be calculated due to the small size in population; however, for families with children under 18 years 100% live in poverty. Sixty percent (60.0%) of renters are paying 35% or more of their household income on rent. The median home value is \$75,600.

33476 Pahokee

According to the American Community Survey, the population is 33% White, 62% Black and 27% Hispanic. Nineteen percent (19.3%) of the population in the area is foreign born. The median age of the population is 34.0 years with 7.9% of the population under age 5 and 31.6% under 19 years old. Approximately 60.8% of the population over age 25 has graduated from high school. Looking at three and four year olds, 42.9% of the population is enrolled in school. The median income for a family is \$30,809 and 34.5% of families live in poverty. The poverty levels are higher for those with children under five years old at 48.1% and with children under 18 years at 46.0%. Forty-one percent (41.4%) of renters are paying 35% or more of their household income on rent.

Glossary of Terms

Race/Ethnicity - A social definition of race recognized in this country and not an attempt to define race biologically, anthropologically, or genetically. In addition, it is recognized that the categories of the race item include racial and national origin or sociocultural groups. People who identify their origin as Hispanic, Latino, or Spanish may be of any race. Information on race is required for many Federal programs and is critical in making policy decisions, particularly for civil rights. States use these data to meet legislative redistricting principles. Race data also are used to promote equal employment opportunities and to assess racial disparities in health and environmental risks.

White – A person having origins in any of the original peoples of Europe, the Middle East, or North Africa.

Black or African American – A person having origins in any of the Black racial groups of Africa. It includes people who indicate their race as “Black or African American,” or report entries such as African American, Kenyan, Nigerian, or Haitian.

American Indian or Alaska Native – A person having origins in any of the original peoples of North and South America (including Central America) and who maintains tribal affiliation or community attachment.

Asian – A person having origins in any of the original peoples of the Far East, Southeast Asia, or the Indian subcontinent including, for example, Cambodia, China, India, Japan, Korea, Malaysia, Pakistan, the Philippine Islands, Thailand, and Vietnam.

Native Hawaiian or Other Pacific Islander – A person having origins in any of the original peoples of Hawaii, Guam, Samoa, or other Pacific Islands.

Some Other Race - Includes all other responses not included in the "White," "Black or African American," "American Indian or Alaska Native," "Asian," and "Native Hawaiian or Other Pacific Islander" race categories. Respondents reporting entries such as multiracial, mixed, interracial, or a Hispanic, Latino, or Spanish group (for example, Mexican, Puerto Rican, Cuban, or Spanish) in response to the race question are included in this category.

Two or More Races - People may choose to provide two or more races either by checking two or more race response check boxes, by providing multiple responses, or by some combination of check boxes and other responses.

Foreign born - The U.S. Census Bureau uses the term foreign born to refer to anyone who is not a U.S. citizen at birth. This includes naturalized U.S. citizens, lawful permanent residents (immigrants), temporary migrants (such as foreign students), humanitarian migrants (such as refugees and asylees), and unauthorized migrants.

Median Age - The median age is the age at the midpoint of the population. Half of the population is older than the median age and half of the population is younger. The median age is often used to describe the "age" of a population.

Median Income - The median income divides the income distribution into two equal groups, one having incomes above the median, and other having incomes below the median.

Family income - This includes the income of the householder and all other individuals 15 years old and over related to the householder

School enrollment - Enrollment in regular school, either public or private, which includes nursery school, kindergarten, elementary school, and schooling which leads to a high school diploma or college degree.

High School Graduate (>25 years) – Refers to the highest level of education completed in terms of the highest degree or the highest level of schooling completed is 12th grade for the population over 25 years old.

Uninsured - People who had no reported health coverage, or those whose only health coverage was Indian Health service (this program is included only in the American Community Survey), were considered uninsured.

Poverty - Following the Office of Management and Budget's (OMB's) Directive 14, the Census Bureau uses a set of money income thresholds that vary by family size and composition to determine who is in poverty. If the total income for a family or unrelated individual falls below the relevant poverty threshold, then the family (and every individual in it) or unrelated individual is considered in poverty.

Unemployed - All civilians 16 years old and over are classified as unemployed if they (1) were neither "at work" nor "with a job but not at work" during the reference week, and (2) were actively looking for work during the last 4 weeks, and (3) were available to accept a job. Also included as unemployed are civilians who did not work at all during the reference week, were waiting to be called back to a job from which they had been laid off, and were available for work except for temporary illness.

Disability - A long-lasting physical, mental, or emotional condition. This condition can make it difficult for a person to do activities such as walking, climbing stairs, dressing, bathing, learning, or remembering. This condition can also impede a person from being able to go outside the home alone or to work at a job or business.

Gross Rent as a Percentage of Household Income - Gross rent as a percentage of household income is a computed ratio of monthly gross rent to monthly household income

Appendix 1: Data Table by Total Red Indicators

ZIP Code	City	Total Births, 2013-2015	Number of Total Families, 2011-2015	Number of Total Families with Children under 18, 2011-2015	Percent of Families with Children Under 6 Years old, 2011-2015	Percent of Families with Children, 0 to 5 in Poverty, 2011-2015	Percent of Women With Late or No Prenatal Care, 2013-2015	Percent of Low Birthweight Babies, 2013-2015	Percent of Premature Babies, 2013-2015	Estimated Childcare Needs, 2011-2015	Percent of Children Scoring Not Ready for School, 2015	Percent of Children Scoring Not on 3rd Grade Reading Level, 2015	Percent of Teen Births , 2013-2015	High School Graduation Rate, 2015	Percent of Verified Unduplicated Child Abuse Cases Ages 0 to 5, FY14-FY16	Community Needs Index, 2015	Total Red
33404	RIVIERA BEACH	1,387	6,242	2,069	21.7%	33.4%	7.7%	13.3%	14.2%	621	9.9%	67.8%	9.9%	80.7%	6.9%	4.8	11
33407	WEST PALM BEACH	1,704	6,139	2,964	29.4%	35.2%	8.6%	11.2%	10.7%	803	10.3%	65.8%	6.2%	80.3%	6.9%	4.8	11
33435	BOYNTON BEACH	1,376	7,322	2,615	23.1%	23.8%	10.0%	10.1%	10.7%	682	11.5%	67.5%	5.5%	77.7%	3.2%	4.6	11
33401	WEST PALM BEACH	996	4,518	1,731	28.1%	31.2%	6.8%	10.0%	10.0%	119	11.6%	61.9%	6.6%	83.3%	3.0%	4.4	10
33463	LAKE WORTH	2,517	12,732	7,023	19.0%	13.0%	8.6%	8.8%	10.1%	1,392	9.4%	55.9%	5.8%	83.5%	6.3%	3.6	10
33430	BELLE GLADE	1,143	4,721	2,508	24.3%	36.1%	9.1%	9.7%	12.2%	787	5.8%	75.9%	8.1%	66.4%	3.7%	5	10
33493	SOUTH BAY																
33405	WEST PALM BEACH	778	4,118	1,698	18.2%	23.2%	7.8%	7.8%	10.2%	501	18.5%	49.8%	5.9%	81.8%	0.8%	5	9
33409	WEST PALM BEACH	1,501	6,292	2,906	21.0%	18.3%	7.7%	9.9%	10.3%	662	6.9%	62.7%	7.1%	76.5%	4.0%	4.2	9
33415	WEST PALM BEACH	2,037	10,705	5,215	20.5%	28.2%	9.4%	7.8%	9.3%	1,796	9.8%	53.7%	5.6%	77.7%	3.6%	4.8	9
33417	WEST PALM BEACH	1,105	7,087	2,852	22.6%	15.0%	8.7%	9.5%	10.0%	912	6.5%	56.3%	5.9%	80.7%	4.5%	4.6	9
33444	DELRAY BEACH	859	4,559	1,825	22.9%	26.6%	7.7%	9.3%	8.5%	255	13.0%	64.8%	4.2%	81.7%	2.0%	4.4	9
33460	LAKE WORTH	1,687	6,012	3,014	19.5%	33.4%	12.5%	8.2%	8.9%	1,327	13.7%	70.6%	7.5%	74.6%	4.8%	5	9
33461	LAKE WORTH	2,041	9,104	4,814	20.7%	22.5%	7.8%	8.0%	8.9%	1,863	12.5%	63.2%	7.4%	78.7%	6.4%	4.8	9
33462	LAKE WORTH	1,114	7,502	3,095	19.4%	28.3%	7.5%	7.6%	9.0%	832	9.3%	59.9%	7.2%	77.6%	3.7%	4.2	9
33438	CANAL POINT	402	1,730	1,013	23.8%	48.1%	6.7%	12.4%	13.9%	192	8.8%	59.2%	9.7%	75.0%	2.1%	5	9
33476	PAHOKEE																
33406	WEST PALM BEACH	947	5,514	2,999	26.2%	21.4%	8.8%	7.5%	9.1%	738	12.0%	47.4%	6.4%	85.5%	0.6%	4.2	8
33403	WEST PALM BEACH	572	2,581	1,077	21.3%	46.0%	7.2%	9.3%	9.4%	119	6.2%	59.7%	7.0%	74.5%	1.5%	4.4	7
33436	BOYNTON BEACH	1,347	10,617	3,806	30.0%	5.2%	6.4%	7.2%	7.1%	882	9.5%	45.8%	3.0%	88.5%	3.2%	3.4	5
33445	DELRAY BEACH	890	6,996	1,892	29.7%	20.9%	7.2%	7.4%	8.9%	365	14.0%	39.0%	3.3%	82.0%	1.2%	3.6	5
33413	WEST PALM BEACH	660	3,833	1,580	24.4%	11.0%	5.5%	9.2%	10.8%	154	5.1%	40.5%	3.3%	87.1%	0.6%	4	4
33426	BOYNTON BEACH	775	4,525	1,771	30.0%	3.8%	5.0%	8.0%	9.9%	30	10.7%	46.3%	2.1%	90.5%	0.9%	3.8	4
33467	LAKE WORTH	1,038	13,607	4,583	14.7%	12.6%	3.9%	8.8%	11.8%	518	8.0%	32.6%	2.7%	93.0%	3.3%	2.6	4
33411	WEST PALM BEACH	2,311	16,877	7,243	14.3%	9.1%	4.2%	8.4%	9.9%	521	6.0%	41.2%	3.0%	90.3%	4.3%	3.4	3
33434	BOCA RATON	301	5,535	1,404	11.5%	21.1%	4.0%	8.6%	11.0%	108	1.3%	28.4%	2.0%	90.6%	0.3%	2.4	3
33437	BOYNTON BEACH	664	11,754	1,901	31.2%	17.5%	6.8%	6.6%	7.5%	519	6.9%	41.4%	1.5%	83.7%	0.6%	2.6	3

*Total Number

Red Indicators - poorly performing indicators which ranked in the top twenty or bottom twenty (depending on the indicator) of all Palm Beach County zip codes.

ZIP CODES - BRIDGES Location

Appendix 1: Data Table by Total Red Indicators (continued)

ZIP Code	City	Total Births, 2013-2015	Number of Total Families, 2011-2015	Number of Total Families with Children under 18, 2011-2015	Percent of Families with Children Under 6 Years old, 2011-2015	Percent of Families with Children, 0 to 5 in Poverty, 2011-2015	Percent of Women With Late or No Prenatal Care, 2013-2015	Percent of Low Birthweight Babies, 2013-2015	Percent of Premature Babies, 2013-2015	Estimated Childcare Needs, 2011-2015	Percent of Children Scoring Not Ready for School, 2015	Percent of Children Scoring Not on 3rd Grade Reading Level, 2015	Percent of Teen Births, 2013-2015	High School Graduation Rate, 2015	Percent of Verified Unduplicated Child Abuse Cases Ages 0 to 5, FY14-FY16	Community Needs Index, 2015	Total Red
33470	LOXAHATCHEE	754	6,345	2,852	15.4%	1.8%	2.1%	9.4%	10.7%	178	2.5%	41.0%	2.5%	90.3%	2.9%	2.8	3
33477	JUPITER	93	4,004	471	17.8%	0.0%	3.2%	9.7%	16.1%	-7	9.5%	27.3%	0.0%	95.5%	0.1%	2.2	3
33484	DELRAY BEACH	303	6,036	816	32.1%	31.0%	4.6%	7.3%	10.9%	222	7.5%	48.3%	2.0%	88.6%	0.8%	2.4	3
33449	LAKE WORTH	178	3,293	1,401	26.9%	23.7%	3.4%	9.0%	11.8%	209	4.8%	19.1%	2.9%	93.1%	0.1%	2	3
33414	WELLINGTON	1,472	14,739	7,298	13.2%	7.1%	4.6%	8.0%	8.6%	467	6.1%	29.2%	2.6%	93.3%	2.3%	2.8	2
33432	BOCA RATON	413	4,632	1,403	19.2%	27.0%	5.3%	7.3%	8.7%	115	16.7%	39.5%	1.5%	93.2%	0.9%	3.2	2
33446	DELRAY BEACH	217	6,451	1,107	15.3%	4.8%	7.4%	10.6%	6.9%	-24	2.6%	19.6%	2.3%	95.8%	0.4%	3	2
33458	JUPITER	1,704	13,374	5,989	25.2%	13.4%	5.3%	0.0%	7.0%	428	6.0%	32.9%	0.1%	97.2%	2.2%	3	2
33480	PALM BEACH	71	2,782	265	13.2%	32.4%	4.2%	8.5%	5.6%	31	0.0%	0.0%	1.4%	85.7%	0.1%	1.6	2
33483	DELRAY BEACH	233	2,871	671	20.7%	20.9%	5.6%	7.7%	6.9%	12	21.4%	27.8%	2.1%	81.1%	0.2%	3.2	2
33496	BOCA RATON	275	6,181	1,946	12.3%	27.3%	5.8%	7.6%	10.2%	83	2.8%	20.6%	1.8%	94.6%	0.2%	2.2	2
33408	NORTH PALM BEACH	326	4,448	1,274	28.8%	8.0%	2.1%	6.1%	10.1%	49	6.5%	42.6%	2.1%	93.5%	0.2%	2.6	1
33410	PALM BEACH GARDENS	1,029	8,776	3,337	20.2%	4.3%	5.5%	6.7%	7.6%	597	7.8%	40.4%	3.0%	87.0%	0.9%	2.8	1
33428	BOCA RATON	1,065	10,276	4,744	14.5%	15.0%	6.3%	7.7%	8.6%	211	10.8%	37.3%	1.5%	87.4%	0.9%	3	1
33473	BOYNTON BEACH	331	2,464	1,512	39.4%	0.0%	3.3%	8.2%	8.8%	22	9.7%	21.6%	0.3%	97.7%	0.3%	1.8	1
33433	BOCA RATON	1,031	10,611	3,888	21.4%	14.8%	4.5%	8.3%	8.6%	401	7.0%	33.0%	0.9%	94.2%	0.8%	3	0
33412	WEST PALM BEACH	328	3,966	1,197	21.1%	0.0%	3.4%	6.7%	9.1%	255	1.1%	33.3%	2.7%	91.0%	0.6%	2.4	0
33418	PALM BEACH GARDENS	880	10,318	3,028	19.3%	12.1%	3.3%	5.9%	9.4%	79	4.6%	27.5%	1.1%	95.1%	1.6%	2.4	0
33431	BOCA RATON	375	4,233	1,431	15.4%	6.0%	4.0%	5.3%	7.2%	57	8.1%	18.4%	1.1%	96.0%	0.2%	3	0
33469	JUPITER	256	3,919	1,072	23.5%	0.0%	3.5%	5.5%	9.4%	44	0.0%	26.4%	0.8%	97.8%	0.6%	1.6	0
33472	BOYNTON BEACH	323	6,121	1,604	21.9%	0.0%	4.3%	5.6%	7.7%	144	5.6%	28.7%	1.9%	92.0%	0.9%	2	0
33478	JUPITER	303	3,307	1,192	18.0%	0.0%	3.6%	6.3%	7.9%	34	0.0%	31.1%	1.3%	96.3%	1.5%	2	0
33486	BOCA RATON	552	5,741	2,490	24.6%	15.0%	4.3%	6.5%	5.6%	203	2.4%	22.0%	1.6%	94.4%	1.9%	3	0
33487	BOCA RATON	412	4,781	1,380	27.4%	2.9%	5.1%	7.0%	6.6%	107	4.3%	32.3%	1.7%	95.6%	0.4%	2.4	0
33498	BOCA RATON	300	3,933	1,522	7.2%	0.0%	3.7%	6.7%	8.7%	-12	3.3%	21.6%	0.3%	96.4%	0.4%	2	0
N/A	PALM BEACH COUNTY	43,504	332,725	140,098	20.7%	17.4%	7.4%	8.4%	9.5%	20,603	8.5%	46.5%	4.5%	79.4%	1707*	N/A	N/A

*Total Number

Red Indicators - poorly performing indicators which ranked in the top twenty or bottom twenty (depending on the indicator) of all Palm Beach County zip codes.

ZIP CODES - BRIDGES Location

Appendix 2: Data Table by Zip Code

ZIP Code	City	Total Births, 2013-2015	Number of Total Families, 2011-2015	Number of Total Families with Children under 18, 2011-2015	Percent of Families with Children Under 6 Years old, 2011-2015	Percent of Families with Children, 0 to 5 in Poverty, 2011-2015	Percent of Women With Late or No Prenatal Care, 2013-2015	Percent of Low Birthweight Babies, 2013-2015	Percent of Premature Babies, 2013-2015	Estimated Childcare Needs, 2011-2015	Percent of Children Scoring Not Ready for School, 2015	Percent of Children Scoring Not on 3rd Grade Reading Level, 2015	Percent of Teen Births , 2013-2015	High School Graduation Rate, 2015	Percent of Verified Unduplicated Child Abuse Cases Ages 0 to 5, FY14-FY16	Community Needs Index, 2015	Total Red
33401	WEST PALM BEACH	996	4,518	1,731	28.1%	31.2%	6.8%	10.0%	10.0%	119	11.6%	61.9%	6.6%	83.3%	3.0%	4.4	10
33403	WEST PALM BEACH	572	2,581	1,077	21.3%	46.0%	7.2%	9.3%	9.4%	119	6.2%	59.7%	7.0%	74.5%	1.5%	4.4	7
33404	RIVIERA BEACH	1,387	6,242	2,069	21.7%	33.4%	7.7%	13.3%	14.2%	621	9.9%	67.8%	9.9%	80.7%	6.9%	4.8	11
33405	WEST PALM BEACH	778	4,118	1,698	18.2%	23.2%	7.8%	7.8%	10.2%	501	18.5%	49.8%	5.9%	81.8%	0.8%	5	9
33406	WEST PALM BEACH	947	5,514	2,999	26.2%	21.4%	8.8%	7.5%	9.1%	738	12.0%	47.4%	6.4%	85.5%	0.6%	4.2	8
33407	WEST PALM BEACH	1,704	6,139	2,964	29.4%	35.2%	8.6%	11.2%	10.7%	803	10.3%	65.8%	6.2%	80.3%	6.9%	4.8	11
33408	NORTH PALM BEACH	326	4,448	1,274	28.8%	8.0%	2.1%	6.1%	10.1%	49	6.5%	42.6%	2.1%	93.5%	0.2%	2.6	1
33409	WEST PALM BEACH	1,501	6,292	2,906	21.0%	18.3%	7.7%	9.9%	10.3%	662	6.9%	62.7%	7.1%	76.5%	4.0%	4.2	9
33410	PALM BEACH GARDENS	1,029	8,776	3,337	20.2%	4.3%	5.5%	6.7%	7.6%	597	7.8%	40.4%	3.0%	87.0%	0.9%	2.8	1
33411	WEST PALM BEACH	2,311	16,877	7,243	14.3%	9.1%	4.2%	8.4%	9.9%	521	6.0%	41.2%	3.0%	90.3%	4.3%	3.4	3
33412	WEST PALM BEACH	328	3,966	1,197	21.1%	0.0%	3.4%	6.7%	9.1%	255	1.1%	33.3%	2.7%	91.0%	0.6%	2.4	0
33413	WEST PALM BEACH	660	3,833	1,580	24.4%	11.0%	5.5%	9.2%	10.8%	154	5.1%	40.5%	3.3%	87.1%	0.6%	4	4
33414	WELLINGTON	1,472	14,739	7,298	13.2%	7.1%	4.6%	8.0%	8.6%	467	6.1%	29.2%	2.6%	93.3%	2.3%	2.8	2
33415	WEST PALM BEACH	2,037	10,705	5,215	20.5%	28.2%	9.4%	7.8%	9.3%	1,796	9.8%	53.7%	5.6%	77.7%	3.6%	4.8	9
33417	WEST PALM BEACH	1,105	7,087	2,852	22.6%	15.0%	8.7%	9.5%	10.0%	912	6.5%	56.3%	5.9%	80.7%	4.5%	4.6	9
33418	PALM BEACH GARDENS	880	10,318	3,028	19.3%	12.1%	3.3%	5.9%	9.4%	79	4.6%	27.5%	1.1%	95.1%	1.6%	2.4	0
33426	BOYNTON BEACH	775	4,525	1,771	30.0%	3.8%	5.0%	8.0%	9.9%	30	10.7%	46.3%	2.1%	90.5%	0.9%	3.8	4
33428	BOCA RATON	1,065	10,276	4,744	14.5%	15.0%	6.3%	7.7%	8.6%	211	10.8%	37.3%	1.5%	87.4%	0.9%	3	1
33431	BOCA RATON	375	4,233	1,431	15.4%	6.0%	4.0%	5.3%	7.2%	57	8.1%	18.4%	1.1%	96.0%	0.2%	3	0
33432	BOCA RATON	413	4,632	1,403	19.2%	27.0%	5.3%	7.3%	8.7%	115	16.7%	39.5%	1.5%	93.2%	0.9%	3.2	2
33433	BOCA RATON	1,031	10,611	3,888	21.4%	14.8%	4.5%	8.3%	8.6%	401	7.0%	33.0%	0.9%	94.2%	0.8%	3	0
33434	BOCA RATON	301	5,535	1,404	11.5%	21.1%	4.0%	8.6%	11.0%	108	1.3%	28.4%	2.0%	90.6%	0.3%	2.4	3
33435	BOYNTON BEACH	1,376	7,322	2,615	23.1%	23.8%	10.0%	10.1%	10.7%	682	11.5%	67.5%	5.5%	77.7%	3.2%	4.6	11
33436	BOYNTON BEACH	1,347	10,617	3,806	30.0%	5.2%	6.4%	7.2%	7.1%	882	9.5%	45.8%	3.0%	88.5%	3.2%	3.4	5
33437	BOYNTON BEACH	664	11,754	1,901	31.2%	17.5%	6.8%	6.6%	7.5%	519	6.9%	41.4%	1.5%	83.7%	0.6%	2.6	3
33444	DELRAY BEACH	859	4,559	1,825	22.9%	26.6%	7.7%	9.3%	8.5%	255	13.0%	64.8%	4.2%	81.7%	2.0%	4.4	9

*Total Number

RED INDICATORS - poorly performing indicators which ranked in the top twenty or bottom twenty (depending on the indicator) of all Palm Beach County zip codes.

ZIP CODES - BRIDGES Location

Appendix 2: Data Table by Zip Code (continued)

ZIP Code	City	Total Births, 2013-2015	Number of Total Families, 2011-2015	Number of Total Families with Children under 18, 2011-2015	Percent of Families with Children Under 6 Years old, 2011-2015	Percent of Families with Children, 0 to 5 in Poverty, 2011-2015	Percent of Women With Late or No Prenatal Care, 2013-2015	Percent of Low Birthweight Babies, 2013-2015	Percent of Premature Babies, 2013-2015	Estimated Childcare Needs, 2011-2015	Percent of Children Scoring Not Ready for School, 2015	Percent of Children Scoring Not on 3rd Grade Reading Level, 2015	Percent of Teen Births, 2013-2015	High School Graduation Rate, 2015	Percent of Verified Unduplicated Child Abuse Cases Ages 0 to 5, FY14-FY16	Community Needs Index, 2015	Total Red
33445	DELRAY BEACH	890	6,996	1,892	29.7%	20.9%	7.2%	7.4%	8.9%	365	14.0%	39.0%	3.3%	82.0%	1.2%	3.6	5
33446	DELRAY BEACH	217	6,451	1,107	15.3%	4.8%	7.4%	10.6%	6.9%	-24	2.6%	19.6%	2.3%	95.8%	0.4%	3	2
33449	LAKE WORTH	178	3,293	1,401	26.9%	23.7%	3.4%	9.0%	11.8%	209	4.8%	19.1%	2.9%	93.1%	0.1%	2	3
33458	JUPITER	1,704	13,374	5,989	25.2%	13.4%	5.3%	0.0%	7.0%	428	6.0%	32.9%	0.1%	97.2%	2.2%	3	2
33460	LAKE WORTH	1,687	6,012	3,014	19.5%	33.4%	12.5%	8.2%	8.9%	1,327	13.7%	70.6%	7.5%	74.6%	4.8%	5	9
33461	LAKE WORTH	2,041	9,104	4,814	20.7%	22.5%	7.8%	8.0%	8.9%	1,863	12.5%	63.2%	7.4%	78.7%	6.4%	4.8	9
33462	LAKE WORTH	1,114	7,502	3,095	19.4%	28.3%	7.5%	7.6%	9.0%	832	9.3%	59.9%	7.2%	77.6%	3.7%	4.2	9
33463	LAKE WORTH	2,517	12,732	7,023	19.0%	13.0%	8.6%	8.8%	10.1%	1,392	9.4%	55.9%	5.8%	83.5%	6.3%	3.6	10
33467	LAKE WORTH	1,038	13,607	4,583	14.7%	12.6%	3.9%	8.8%	11.8%	518	8.0%	32.6%	2.7%	93.0%	3.3%	2.6	4
33469	JUPITER	256	3,919	1,072	23.5%	0.0%	3.5%	5.5%	9.4%	44	0.0%	26.4%	0.8%	97.8%	0.6%	1.6	0
33470	LOXAHATCHEE	754	6,345	2,852	15.4%	1.8%	2.1%	9.4%	10.7%	178	2.5%	41.0%	2.5%	90.3%	2.9%	2.8	3
33472	BOYNTON BEACH	323	6,121	1,604	21.9%	0.0%	4.3%	5.6%	7.7%	144	5.6%	28.7%	1.9%	92.0%	0.9%	2	0
33473	BOYNTON BEACH	331	2,464	1,512	39.4%	0.0%	3.3%	8.2%	8.8%	22	9.7%	21.6%	0.3%	97.7%	0.3%	1.8	1
33477	JUPITER	93	4,004	471	17.8%	0.0%	3.2%	9.7%	16.1%	-7	9.5%	27.3%	0.0%	95.5%	0.1%	2.2	3
33478	JUPITER	303	3,307	1,192	18.0%	0.0%	3.6%	6.3%	7.9%	34	0.0%	31.1%	1.3%	96.3%	1.5%	2	0
33480	PALM BEACH	71	2,782	265	13.2%	32.4%	4.2%	8.5%	5.6%	31	0.0%	0.0%	1.4%	85.7%	0.1%	1.6	2
33483	DELRAY BEACH	233	2,871	671	20.7%	20.9%	5.6%	7.7%	6.9%	12	21.4%	27.8%	2.1%	81.1%	0.2%	3.2	2
33484	DELRAY BEACH	303	6,036	816	32.1%	31.0%	4.6%	7.3%	10.9%	222	7.5%	48.3%	2.0%	88.6%	0.8%	2.4	3
33486	BOCA RATON	552	5,741	2,490	24.6%	15.0%	4.3%	6.5%	5.6%	203	2.4%	22.0%	1.6%	94.4%	1.9%	3	0
33487	BOCA RATON	412	4,781	1,380	27.4%	2.9%	5.1%	7.0%	6.6%	107	4.3%	32.3%	1.7%	95.6%	0.4%	2.4	0
33496	BOCA RATON	275	6,181	1,946	12.3%	27.3%	5.8%	7.6%	10.2%	83	2.8%	20.6%	1.8%	94.6%	0.2%	2.2	2
33498	BOCA RATON	300	3,933	1,522	7.2%	0.0%	3.7%	6.7%	8.7%	-12	3.3%	21.6%	0.3%	96.4%	0.4%	2	0
33438 33476	CANAL POINT PAHOKEE	402	1,730	1,013	23.8%	48.1%	6.7%	12.4%	13.9%	192	8.8%	59.2%	9.7%	75.0%	2.1%	5	9
33430 33493	BELLE GLADE SOUTH BAY	1,143	4,721	2,508	24.3%	36.1%	9.1%	9.7%	12.2%	787	5.8%	75.9%	8.1%	66.4%	3.7%	5	10
N/A	PALM BEACH COUNTY	43,504	332,725	140,098	20.7%	17.4%	7.4%	8.4%	9.5%	20,603	8.5%	46.5%	4.5%	79.4%	1707*	N/A	N/A

*Total Number

RED INDICATORS - poorly performing indicators which ranked in the top twenty or bottom twenty (depending on the indicator) of all Palm Beach County zip codes.

ZIP CODES - BRIDGES Location

Sources

Data

American Community Survey 5-year estimates, 2011-2015 Retrieved from <https://www.census.gov/>

Dignity Health Community Needs Index, 2015; <http://cni.chw-interactive.org/>

Early Learning Coalition, 2015-16; Lutheran Services, 2015-16; Redlands Christian Migrant Association, 2015-16

Florida CHARTS 3-year rolling averages, 2013-2015 Retrieved from <http://www.flhealthcharts.com/charts/default.aspx>

Florida Department of Children and Families, Circuit 15, 2014-2016

School District of Palm Beach County, 2015-16

Shapefiles

Palm Beach County "Census Tracts". US Census. Retrieved from <https://www.census.gov/>

Palm Beach County, "Major Water." Palm Beach County GIS Department.

Palm Beach County, "Points of Interest", Children's Services Council of Palm Beach County.

Palm Beach County, "Zip Codes" Palm Beach County GIS Department.

US Major Cities, ESRI

World Ocean Base, OpenStreetMap. Retrieved from <http://www.openstreetmap.org/#map=4/38.01/-95.84>

Note: All address data was geocoded and correlated to a longitude and latitude by the ESRI's ArcGIS Online service. All icons and pushpins were produced using ESRI's ArcGIS tools and internal image production software.



Questions on how to use the data?

Contact: Jennifer Munoz

Email: jennifer.munoz@cscpb.org

2300 High Ridge Road

Boynton Beach, FL 33426

(561)740-7000

www.cscpb.org/commneeds