

# SABRE



## UNCAGE THE BEAST

VOL. VI



**SABRE**  
BY PALOMINO

# 2010 FABRICS



Spice



Coffee



Basil



Caramel



Autumn Harvest



Hardwood Cabinets



**3 YEAR  
LIMITED  
WARRANTY**

Standard on all  
hardwood cabinet doors



## WIDE OPEN SPACE

The wide open style of the Sabre interior is designed for comfortable, carefree living. Large picture windows bring in the beauty of the outside world while residential features recreate the comforts of home.

---

### Model 29 CKDS

Shown with optional Beauflor® plank wood pattern flooring and basil decor

---







FULL EXTENSION  
DRAWERS



OPTIONAL SOLID SURFACE COUNTERTOPS WITH SINK LIDS



RESIDENTIAL WOOD  
FRONT REFRIGERATOR

## KITCHEN CONVENIENCES

The Sabre kitchen is a real step-saver, designed to make meal preparation quick and easy. A host of special features make it attractively efficient. Handy features include the pull-out faucet with sprayer, food grade sink cover that doubles as a cutting board, name brand appliances, and residential size overhead cabinets to name just a few. The free-standing dinette includes a leaf extension and chairs with flip-up storage underneath the seats.

Model 31 RETS || Kitchen





MODEL 31 RETS  
CAMEL DECOR









## AN ATTITUDE OF COMFORT

The Sabre is all about comfort and nowhere is that attitude more evident than in the bedroom. A queen size pillow top innerspring mattress ensures sleeping comfort while two large windows provide refreshing cross ventilation. There's storage galore with a handsome residential dresser, large sliding wardrobe with shoe shelf, wardrobe cabinet, and extra overhead storage cabinets. This model features a curved stairwell that leads to the bedroom and spacious bathroom complete with home-like fixtures.

---

**Model 31 RETS**

---



MODEL 31 RETS  
CAMEL DECOR

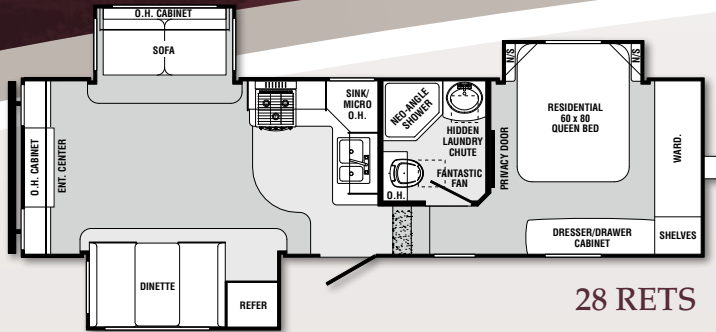




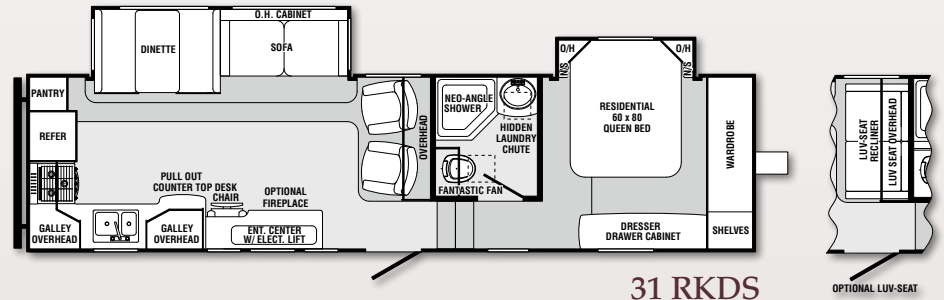




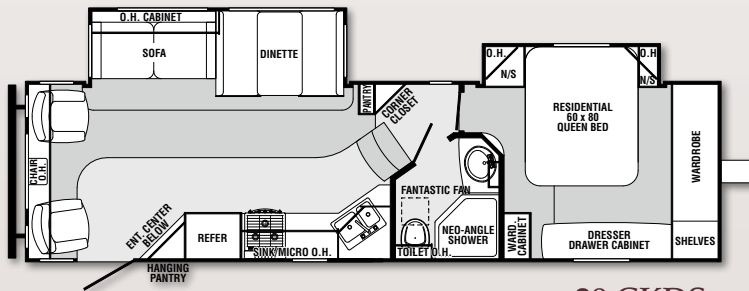
# FIFTH WHEEL FLOORPLANS



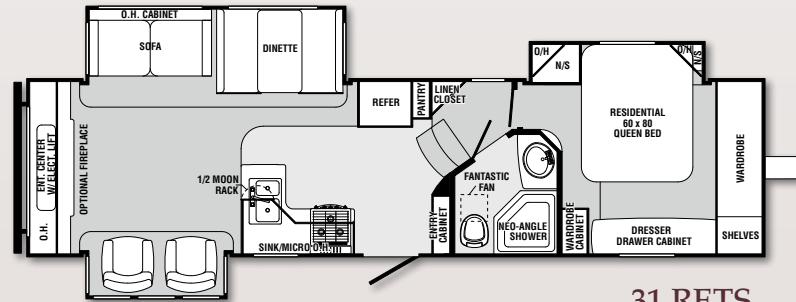
28 RETS



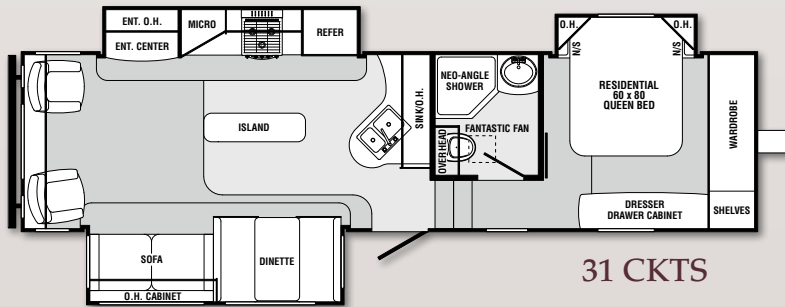
31 RKDS



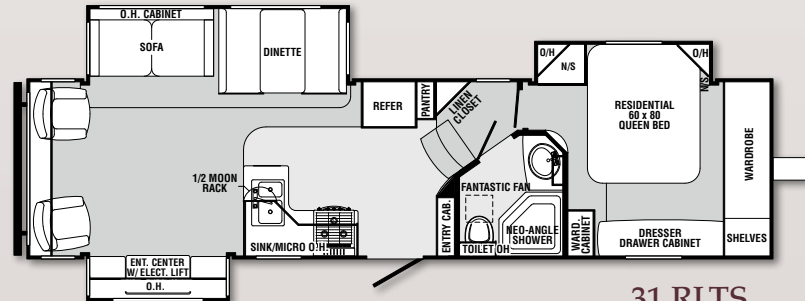
29 CKDS



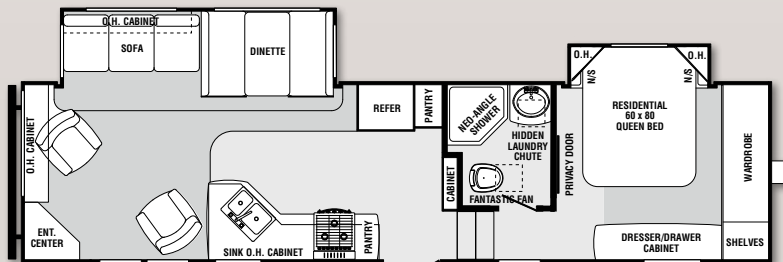
31 RETS



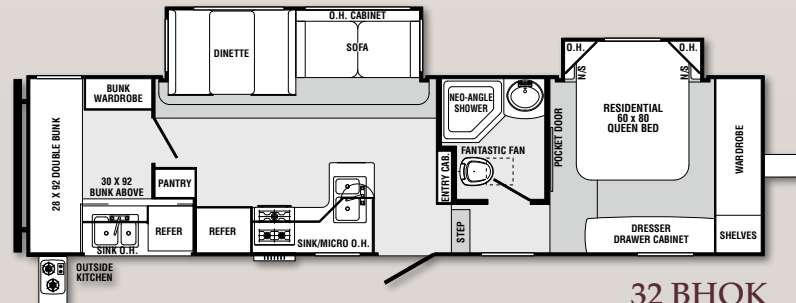
31 CKTS



31 RLTS



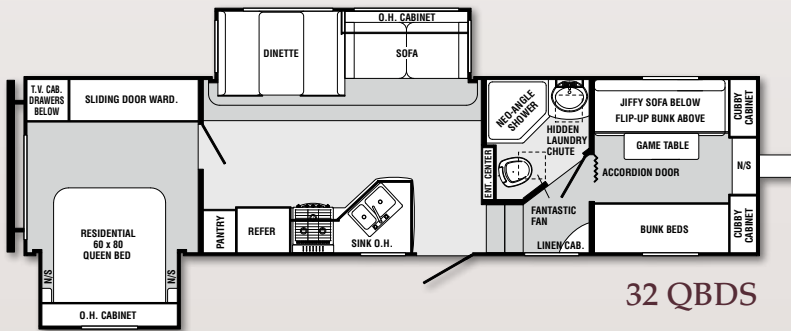
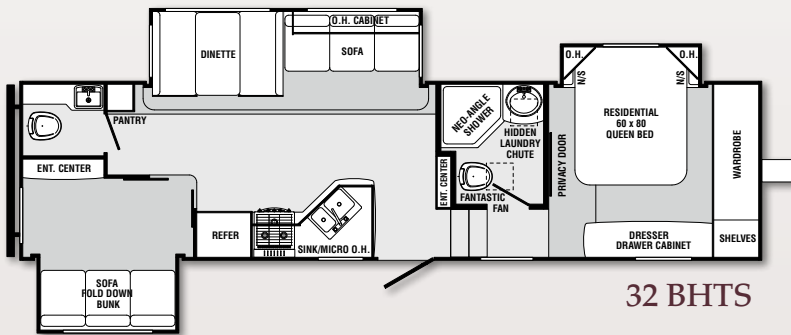
31 REDS



32 BHOK



More Great Floorplans  
To Come!

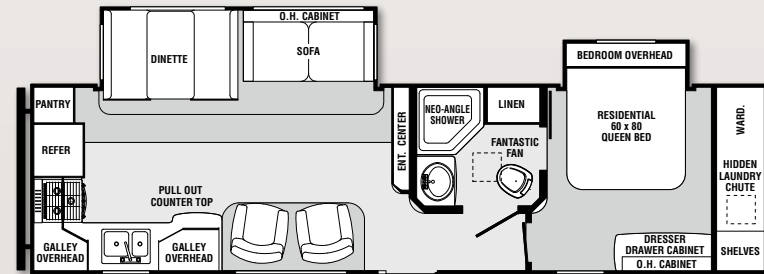
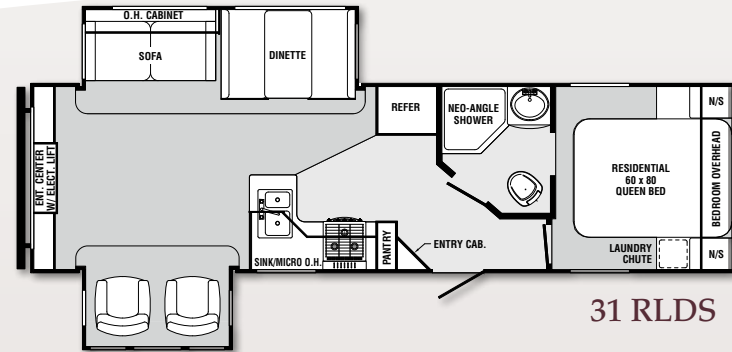
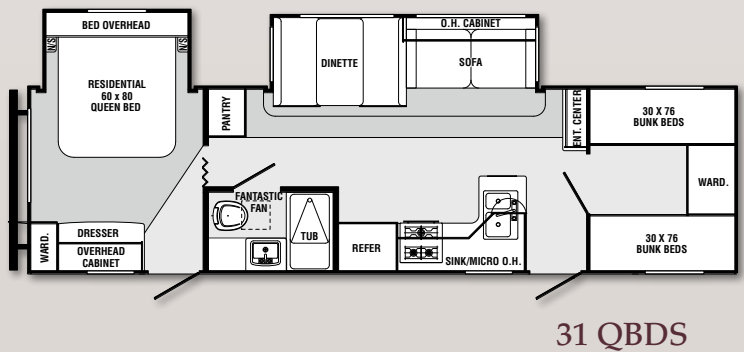
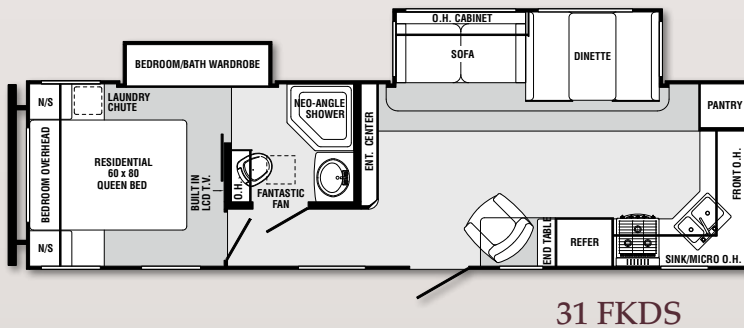
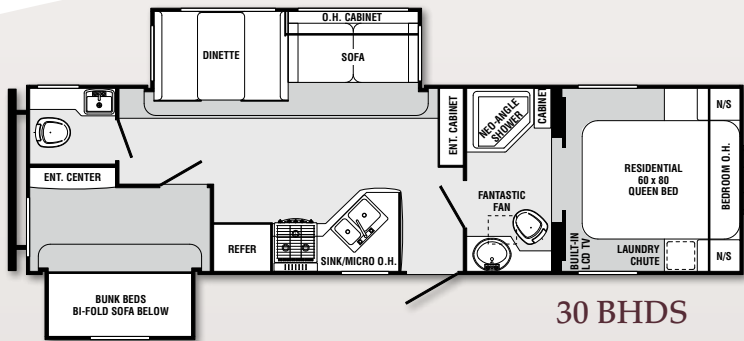


SPECIFICATIONS

MODEL	28 RETS	29 CKDS	31 CKTS	31 REDS	31 RKDS	31 RETS	31 RLTS	32 BHOK	32 BHTS	32 QBDS
Hitch Weight	1,733	1,794	2,020	1,692	1,845	1,665	1,766	1,872	1,612	1,522
Axle Weight	7,375	7,048	7,624	7,514	7,780	8,148	8,001	7,700	8,250	7,713
Dry Ship Weight	9,108	8,842	9,644	9,206	9,625	9,813	9,767	9,572	9,862	9,235
GVWR	11,893	11,954	13,100	11,852	12,005	11,825	11,926	12,032	11,772	11,682
CCC (Cargo Cap.)	2,301	2,628	2,972	2,162	1,908	1,528	1,675	1,976	1,426	1,963
Ext. Length	31'6"	32'6"	34'9"	35'1"	34'9"	35'7"	35'7"	34'3"	36'4"	35'
Fresh Water Cap. (gal.)	42	42	42	42	42	42	42	42	42	42
Black Water Cap. (gal.)	42	42	42	42	42	42	42	42	42	42
½ Bath/Outside Sink. (gal.)	—	—	—	—	—	—	—	42	42	—
Grey Water Cap. (gal.)	42	84	84	84	84	84	84	84	84	84
Tire Size (in.)	15"	15"	15"	15"	15"	15"	15"	15"	15"	15"
Awning Size (ft.)	15'	18'	10'	18'	19'	16'	16'	17'	18'	17'



# TRAVEL TRAILER FLOORPLANS



## SPECIFICATIONS

MODEL	30 BHDS	31 FKDS	31 QBDS	31 RLDS	32 RKDS
Hitch Weight	1,066	1,162	1,161	842	1,086
Axle Weight	7,058	6,781	7,017	7,157	7,107
Dry Ship Weight	8,124	7,943	8,178	7,999	8,193
GVWR	11,226	11,322	11,321	11,002	11,246
CCC (Cargo Cap.)	2,618	2,895	2,659	2,519	2,569
Ext. Length	34'4"	34'9"	34'3"	34'2"	35'10"
Fresh Water Cap. (gal.)	42	42	42	42	42
Black Water Cap. (gal.)	42	42	42	42	42
½ Bath Cap. (gal.)	42	—	—	—	—
Grey Water Cap. (gal.)	84	84	84	84	84
Tire Size (in.)	15"	15"	15"	15"	15"
Awning Size (ft.)	16'	19'	19'	17'	18'



# STANDARDS AND OPTIONS

EXTERIOR	
4 1/4" aluminum roof rafters	S
Welded, totally aluminum-framed walls, floors, roof and slide-outs	S
Insulation package: R-14 roof and floor	S
2" laminated, gel-coated Filon sidewalls with dual layered luan (R-9)	S
Radius baggage doors with inside fasteners	S
Aerodynamic front cap with LED docking lights	S
Attic vent	S
Radius wrap lower walls	S
Corrugated, puncture resistant underbelly	S
Heated, enclosed and insulated water lines, dump valves and holding tanks	S
Seamless, one-piece 5/8" floor decking	S
Quick release snap jack pins mounted forward	S
Rear roof ladder	S
A&E electric awning (NA 28 RETS)	S
(2) Patio scare lights	S
Steel belted radial tires with roadside assistance	S
Axles with Super Lube® bearing system	S
Electric powered front jacks (FW)	S
(2) Marine grade patio speakers	S
Under mount spare tire and carrier (TT)	S
Concealed spare tire and carrier (FW)	S
Deep tint safety glass windows	S
30" wide entry door (most floorplans)	S
Fold away entry handle	S
Pass through storage compartment with adjustable heat (FW)	S
Security step light at main entrance	S
Switchable interior light at each luggage door	S

LP gas hook-up with quick connect	S
Crank down stabilizer jacks	S
Trail Air™ Equa-Flex® suspension	O
15" HiSpec® aluminum wheels with improved clamp force technology (ICF)	O
Flip-down bike/utility rack with 450 lb. capacity	O
16" E-rated tires with 8 lug aluminum wheels with ICF and 6000 lb. axles (FW)	O
Electric stabilizer jacks	O
Electric tongue jack (TT)	O

INTERIOR	
32" HD LCD TV (most models)	S
200 watt CD/DVD/AM/FM player with 5.1 surround sound	S
Digital TV antenna with booster	S
Stereo inputs include: 3.5 mm audio, SD card and USB	S
Top cabinet doors: mortise and tenon with arched <b>raised panels</b>	S
Lower cabinet doors: mortise and tenon with square <b>raised panel</b> doors	S
Armstrong® linoleum	S
Residential carpeting with pad	S
Residential full extension steel drawer guides	S
Flush floor slide rooms in living area	S
Day/night shades throughout living area	S
Air mattress hide-a-bed sofa	O
Ceiling fan (FW only)	O
Beauflor®, plank wood pattern	O
Euro style chair with ottoman IPO swivel rocker chair	O
XM satellite radio receiver with docking station	O
Electric fireplace (FW only, select floorplans)	O

KITCHEN	
Self edged countertop with stone cast under-mounted sink	S
Pull-out faucet with sprayer	S
Food grade sink cover that can be used as a cutting board	S
Full extension drawers	S
Residential-size overhead cabinets	S
Magic Chef® microwave	S
8 cubic foot Dometic® refrigerator	S
Residential wood refrigerator front	S
22" Oven	S
110v outlets mount in dinette area for convenience	S
Aluminum framed dinette bases with plywood seat bases	S
Staron® solid surface galley countertop by Samsung® (FW only)	O
Staron® galley extension by Samsung® (FW only)	O
Free standing dinette with leaf extension and flip-up storage (chairs include storage in the seats)	O
Range cover	O

BATHROOM	
Sky dome over shower	S
34" neo-angle shower with glass enclosure and integrated towel bar	S
Waterproof shower light	S
Large under-mounted stone cast sink with cover	S
Residential-style medicine cabinet	S
Porcelain toilet with foot pedal flush and "power flush" jets	S
12" Fantastic®, 3 speed, high capacity fan	S

BEDROOM	
Machine washable quilted bedspread with (2) pillow shams	S

Residential-sized chest of drawers	S
Prewired for bedroom TV	S
Deluxe pillow top queen (60"x80") innerspring mattress	S
Bedside night stand shelves (most floorplans)	S
Dual reading lights over bed	S
"Shoe shelf" in front wardrobe	S
Large opposing windows for cross ventilation	S
Overhead corner cabinets in slide-out (most models)	S
HD LCD TV	O

UTILITIES	
Whole system water filtration	S
Electric slide-outs that are independent of each other	S
Convenience center for hook-ups (includes hot & cold exterior shower) (FW)	S
35,000 BTU furnace with automatic ignition and high capacity in-floor ducting	S
13,500 BTU air conditioner with Quick Cool	S
10 gal. DSI gas/electric water heater	S
65 amp converter with smart fan cooling	S
30 amp service with detachable marine power cord	S
Systems monitor panel	S
RG-6 satellite prep	S
Satellite/cable hook-up	S
Carbon monoxide detector	S
Water heater bypass	S
Black tank flush	S
15,000 BTU air conditioner with Quick Cool	O
50 amp service with 2nd air conditioner ready. Includes 50 amp detachable marine power cord	O

S = Standard, O = Option



# FEATURES

## INTERIOR



1



2



3



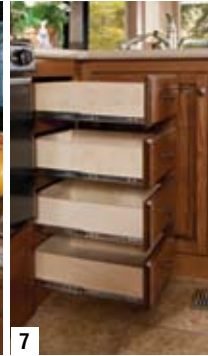
4



5



6



7



8



9



10



11

## EXTERIOR & UTILITIES



12



13



14



15



16



17



18



19



20



21



22





1. Optional free standing dinette with leaf extension and flip-up storage
2. Optional air mattress hide-a-bed sofa
3. Retractable 32" HD LCD TV
4. 8 cubic foot Dometic® refrigerator with residential wood front
5. Optional Staron® Solid Surface countertop
6. Self edged countertop with under-mounted stone cast sink that withstands up to 500 degrees.
7. Full extension drawers
8. Porcelain toilet with foot pedal flush and "power flush" jets
9. Large under-mounted stone cast sink with cover in bathroom allows space for hair and beauty products
10. CD/DVD/AM/FM player with 5.1 Dolby surround sound
11. 60 x 80 queen bed with washable quilted bedspread
12. Steel belted radial tires
13. Hitch pin cover
14. Quick Bite coupler with guide rods for easy trailer hook-up
15. Flip-down bike/utility rack
16. PerformMax 500 for moisture resistance
17. Axles with Super Lube® bearings
18. 30 amp detachable cord
19. 12" Fantastic® fan
20. Whole system water filtration
21. LP quick disconnect
22. Docking station (FW only)

## TRUE SIX-SIDED ALUMINUM CAGE

Sabre's real beauty lies underneath with superior construction that protects your investment with long-term durability. We use only the highest quality construction materials from the ground up. We start with a welded six-sided aluminum cage that provides strength and structural integrity without cumbersome weight. That's why Sabre is so sturdy, yet tows easily.

1. Aluminum welded rafters
2. Aluminum welded floor
3. Aluminum welded front frame
4. Aluminum welded rear frame
5. Aluminum welded door-side frame
6. Aluminum welded off door-side frame



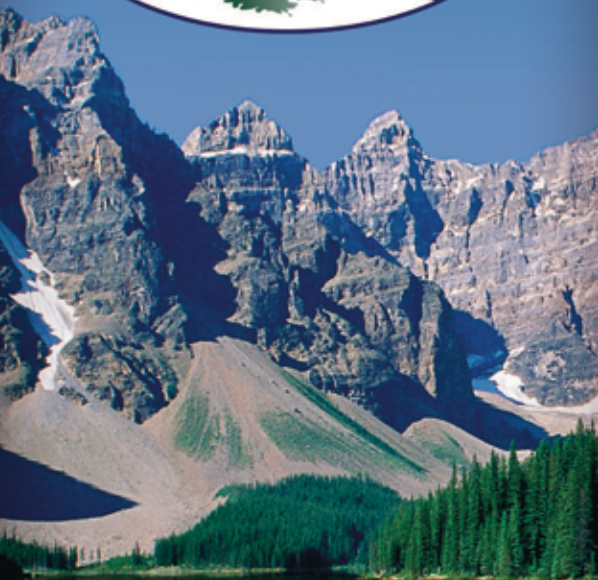
## SABRE MID-PROFILE ADVANTAGES

**A.** The smooth slope of the Sabre roof line provides superior tracking behind your truck. Our roof has no sharp angles to catch the wind.

**B.** The combination of the front cap contours and lower front height allows the Sabre to cut through the wind. This undoubtedly provides reduced wind resistance compared to other brands with a higher front profile.







## EMERGENCY ROADSIDE ASSISTANCE OWNER'S GUIDE

Emergency Roadside Assistance &  
Product Support Plan Guide

**CALL 1-877-801-0333**

Services Administered by Coach-Net®

## PEACE OF MIND EXCLUSIVE BENEFITS

### Emergency Roadside Assistance

Forest River Roadside Assistance Card provides free jump starts, tire changes, fuel delivery and lock-out service.

### Service Assistance

3,800 qualified service assistants are only a phone call away.

### Nationwide Service

#### Appointment Assistance

"No-Hassle" way to make service appointments and get directions, toll free!

### Dispatch of On-Site

#### Mechanical Service

In the event of breakdown and/or disabled RV, contact your service agent toll free.

### \$2,000 Trip

#### Interruption Reimbursement

Accidents can mean expenses. We pay for car rental, meals, lodging and even help with plane tickets home.

### 24-Hour Toll Free Emergency Message Service

Stay in touch with family and friends with no cost emergency message service.

### Custom Trip Routing and Full Color Maps

Makes your trips easier and more enjoyable.



## PRE-DELIVERY INSPECTION FACILITY

20,000 square feet of quality assurance.  
The bare essentials for a premium product.

## Palomino RV Encourages You to Buy Locally

Palomino RV strongly encourages our retail customers to purchase from their local dealership whenever possible due to the following factors:

Our Dealers are, as a rule, independently owned and operated businesses. Outside of those customers they personally sold products to, they are not contractually obligated to perform warranty service on Palomino products that were purchased elsewhere. There may be an occasion that you would be required to return to the point of purchase to satisfy warranty requirements.

Although many dealerships will eventually service products not purchased at their place of business, they will usually take care of their customers and other Palomino customers who are traveling away from their local dealer as they would their own.

Local purchases allow a customer to establish a relationship with a dealer close to home. This relationship provides the customer with a convenient location for service and support from a "home town" professional.

The opportunity for a thorough PDI (Pre-Delivery Inspection) and product orientation is an additional benefit of buying from your local dealer, further providing the opportunity for refresher courses or the ability to get questions answered much more conveniently.

For our Canadian customers, there are also requirements which must be met to bring an RV purchased out of the country to their home. Although not insurmountable, these requirements may involve such things as additional inspections and certifications, taxes and fees. Your local Canadian Dealer is a professional at meeting these requirements.

Palomino RV's goal is for all RV Owners to fully enjoy their RV experience. In light of this goal, and considering the advantages of buying local, we encourage you to be thorough when determining what product to purchase and which dealer to purchase it from as both are key to your ultimate satisfaction and the realization of your dreams.

## YOUR SABRE DEALER:

## Sabre by Palomino

Forest River Inc.  
2412 Century Drive || Goshen, IN 46528  
Phone: 269-432-3271  
[www.palominoRV.com](http://www.palominoRV.com)

All illustrations and specifications contained in this literature are based on the latest product information at time of publication. Forest River, Inc. reserves the right to make changes in prices, colors, materials, equipment and specifications at anytime without notice and assumes no responsibility for any error in this literature. All weights shown are approximate. All units are shipped F.O.B. Goshen, Indiana. CONSULT YOUR LOCAL DEALER FOR WARRANTY INFORMATION.