



CPH

CHRISTIAN BROTHERS UNIVERSITY
college panhellenic

2019
Panhellenic
Recruitment
Guide



Table of Contents

4	Contact Information
5	Welcome
7	Vocabulary
9	Core values
10	Gamma Chi's
11	Why Go Greek?
14	Your First Year
15	Recruitment Schedule
16	Advice on What to Wear
20	Tips for PNMs
21	PNM Bill of Rights
22	Chapter Information

Contact Information

Beverly Agsaulio | + 1 (901) 493 5471

Panhellenic President

cbu.panhellenic.president@gmail.com

Jessica Morrison | + 1 (901) 736 5061

VP of Panhellenic Recruitment

cbu.panhellenic.recruitment@gmail.com

Margaret Hamer | + 1 (901) 734 2899

Panhellenic Recruitment Assistant

cbu.panhellenic.recruitment2@gmail.com

Connie Beck | +1 (901) 321 3529

Panhellenic Advisor

cbeck1@cbu.edu

Welcome from Panhellenic

Christian Brothers University Panhellenic Council is so excited that you are taking the first step to become part of CBU Greek life. We look forward to getting to know you better and welcome you to the Panhellenic community. Deciding to participate in recruitment is the first step to lifelong membership in an organization and memories that will last beyond college. As sorority members, we pride ourselves in our ability to manage campus involvement, academics, and leadership roles. We welcome you to share those opportunities with us! We hope you will decide to become our Panhellenic sisters by the end of the week 😊

Beverly Agsaulio | Panhellenic President

Jessica Morrison | VP of Pan Recruitment

Welcome from Student Life

Welcome to Greek Life at Christian Brothers University! What an exciting time to become part of our buccaneer family! On behalf of the Panhellenic Council, I am so excited for you to join us at this year's formal recruitment process where you will get the chance to meet the two sororities that make up our Panhellenic Community, Alpha Xi Delta and Zeta Tau Alpha. As these organization strive each day to excel in the areas of academic excellence, community service, and sisterhood, it is our hope that you will gain insight on what it could potentially look like for you to join our family and become a sorority woman.

Here at CBU, the Office of Student Life works as a liaison between students, community members, and national

7

fraternity and sorority organizations. With a dedication to leadership and academic success, we can't wait for you to begin the journey of recruitment, as we believe whole-heartedly in the transformational power of Greek Life. Ultimately, it is our hope that you will not only meet many new faces, but that this opportunity will provide you with the foundation to join our vibrant and ever-growing Greek Life family.

As you embark on this next chapter, please don't hesitate to contact me at 901 321 3529 or cbeck1@cbu.edu if you have any questions about our community, the Office of Student Life, or the formal recruitment process. Until then, we appreciate your interest in Greek Life at CBU and can't wait to see you at Sorority Recruitment 2019!

Connie Beck | Student Activities Director

Vocabulary

Active: an initiated, dues-paying member who is enrolled at the university

Badge: a pin worn by fully-initiated member of each fraternity or sorority

Chapter: a membership unit of a national sorority or fraternity

Crest: insignia used by fraternity or sorority members which has hidden meaning behind it, a.k.a. coat of arms

Dues: monetary costs of fraternity membership that are used to cover costs of operation

Gamma Chi: members of Panhellenic sororities who are disaffiliated in order to be unbiased recruitment counselors

Legacy: to have a family member who is a member of a Greek organization

MRABA: stands for "Membership Recruitment Acceptance Binding Agreement," is the form filled out after preference night on which the PNM lists what her desired sorority is

Panhellenic Council: the governing body for the 2 social sororities on campus

Philanthropy: the term used to describe charitable events performed by Greek organizations

Potential New Member (PNM): a term used by the Panhellenic Council to describe students that have the potential to go through formal recruitment; any woman who is not in a general Greek letter fraternity is a PNM

Ritual: the traditional rites and ceremonies of a fraternity or sorority; usually private events known only by initiated members

Sister: the term used by members of sororities when referring to each other

Core Values

Scholarship

Sororities were founded for exceptional scholarship. At CBU, our chapters provide academic support, community-based study hours, and connections to on-campus resources.

Service

Sororities recognize the importance of giving their time, talents, and financial support to philanthropic organizations. Each chapter provides aid to their own philanthropy.

Leadership

Sorority membership is a catalyst for on-campus involvement. The Greek life experience provides leadership development opportunities to help members attain their goals.

Sisterhood

Joining the CBU Panhellenic Council means having support from over 100 students. Sororities offer new friends, life-long bonds, and invaluable experiences that will last beyond college years.

Panhellenic Creed

We, as undergraduate members of women's fraternities, stand for good scholarship, for guarding of good health, for maintenance of fine standards, and for serving, to the best of our ability, our college community. Cooperation for furthering fraternity life, in harmony with its best possibilities, is the ideal that shall guide our fraternity activities. We, as fraternity women, stand for service through development of character inspired by close contact and deep friendship of individual fraternity and Panhellenic life. The opportunity for wide and wise human contact, through mutual respect and helpfulness, is a tenet by which we strive to live.

Gamma Chis

What are Gamma Chis?

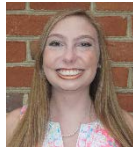
Gamma Chis are active members in a sorority on campus who dedicate their time during recruitment to help you during recruitment week 😊

Who's Who:

Christine Mahoney



Margaret Hamer



Emilee Hawkins



Jessica Morrison



Beverly Agsaulio



Veronica Morales



Sammy Rowland



Sonia Jamarillo



Erica Mauer



Why Go Greek?

1. Participation in campus activities

Anything from student government to various clubs on campus

2. Working with a diverse group of people

Including local community leaders

3. Scholarship opportunities

4. Preparation for future careers

Learn to be a strong leader

5. Social Life

6. Increased community awareness

7. Great friendships

8. Higher GPA

9. More rewarding college experience

Your First Year

New Member Meeting:

New members are required to attend weekly new member meetings (during which you learn sorority history and values) in addition to weekly chapter meetings.

Study Hall Hours:

New members are required to get a certain amount of study hall hours during the first semester of membership.

Philanthropic Work:

Each sorority serves its national philanthropy by hosting events throughout the year to raise donations and awareness.

Active Participation:

New members are encouraged to participate in chapter and campus-wide events.

Recruitment Schedule

** The following times are for the overall event, for which you may or may not be required to stay the entire time **

Wednesday, September 11, 2019

5:30 - 6:15 pm Orientation

6:30 - 9:30 pm Open House Night

Thursday, September 12, 2019

5:30 - 9:30 pm Philanthropy Night

Friday, September 13, 2019

5:30 - 9:30 pm Preference Night

Saturday, September 14, 2019

2 - 6 pm Bid-Day

** Inform cbu.panhellenic.recruitment@gmail.com if you have unavoidable scheduling conflicts**

Advice on What to Wear

Orientation/Open House

What is it?

An introduction to recruitment week and the first time to meet girls from both sororities; a time to become acquaintances.

You will attend two parties—each party being 30 minutes long.

Wear any shirt to the event. Wear nice jeans and casual shoes. Given a Pan shirt to change in to before the parties 😊



Philanthropy Night

What is it?

A night to learn about the philanthropies of each chapter, become friends with the girls from each chapter, and to learn more about what it means to be a sorority member. You will attend two parties—each party being 45 minutes long.

Wear a sundress, blouse with nice/colored pants, or appropriate-length romper with sandals.



Preference Night

What is it?

A night where you could get to learn what it means to be a sister in each sorority. It is the night on which you would fill-out which sorority you would prefer to be in. Each party is one hour long. You must be invited to the party to attend. You could attend a maximum of two parties.

Wear a solid, dark dress or jumpsuit with heels or flats.



Bid-Day

What is it?

The afternoon where you run to your new home!!! Photos will be taken of you with all your new sisters. Your new friends have planned activities that go past 6 pm, so we encourage you to stay with your new family for as long as possible 😊 You must receive a bid to run home.

Wear clothes appropriate for the weather, because Bid-Day will be held outside unless you are told otherwise.

Tips for PNM's

1. Take notes on how you felt, what you talked about, and who you met after leaving each event—the notes will help you make your decision later on.
2. Be interested regardless of whether or not you think you like the sorority.
3. Be polite.
4. Look at the sorority as a whole, not just based on the few women you meet.
5. Ask questions, it shows interest.
6. Smile!!
7. Do not be influenced by other's opinions when deciding which sorority you want.
8. Do not interpret a remark made at an event as an assurance of a bid.
9. Get plenty of sleep.
10. If you have a problem or concern after one of the parties, talk to a gamma chi in private.

PNM Bill of Rights

PNMs have the right to:

1. Be treated as an individual
2. Be fully informed about the recruitment process
3. Ask questions and receive true and objective answers from Gamma Chis
4. Be treated with respect
5. Be treated as a capable and mature person without being patronized
6. To ask how and why and receive answers
7. Have and express opinions to Gamma Chis
8. Have inviolable confidentiality when sharing information with Gamma Chis
9. Make choices without pressure from others
10. Be informed about the MRABA
11. Have a positive, safe, and enriching recruitment and new member experience

Chapter Information

Alpha Xi Delta

Colors: Double blue and Gold

Flower: Pink Rose

Open Motto: Courage, graciousness, and peace

Philanthropy: Autism Speaks



Chapter Information

Zeta Tau Alpha

Colors: Turquoise Blue and Steel Gray

Flower: White Violet

Open Motto: Seek the noblest.

Philanthropy: Breast Cancer Education & Awareness



