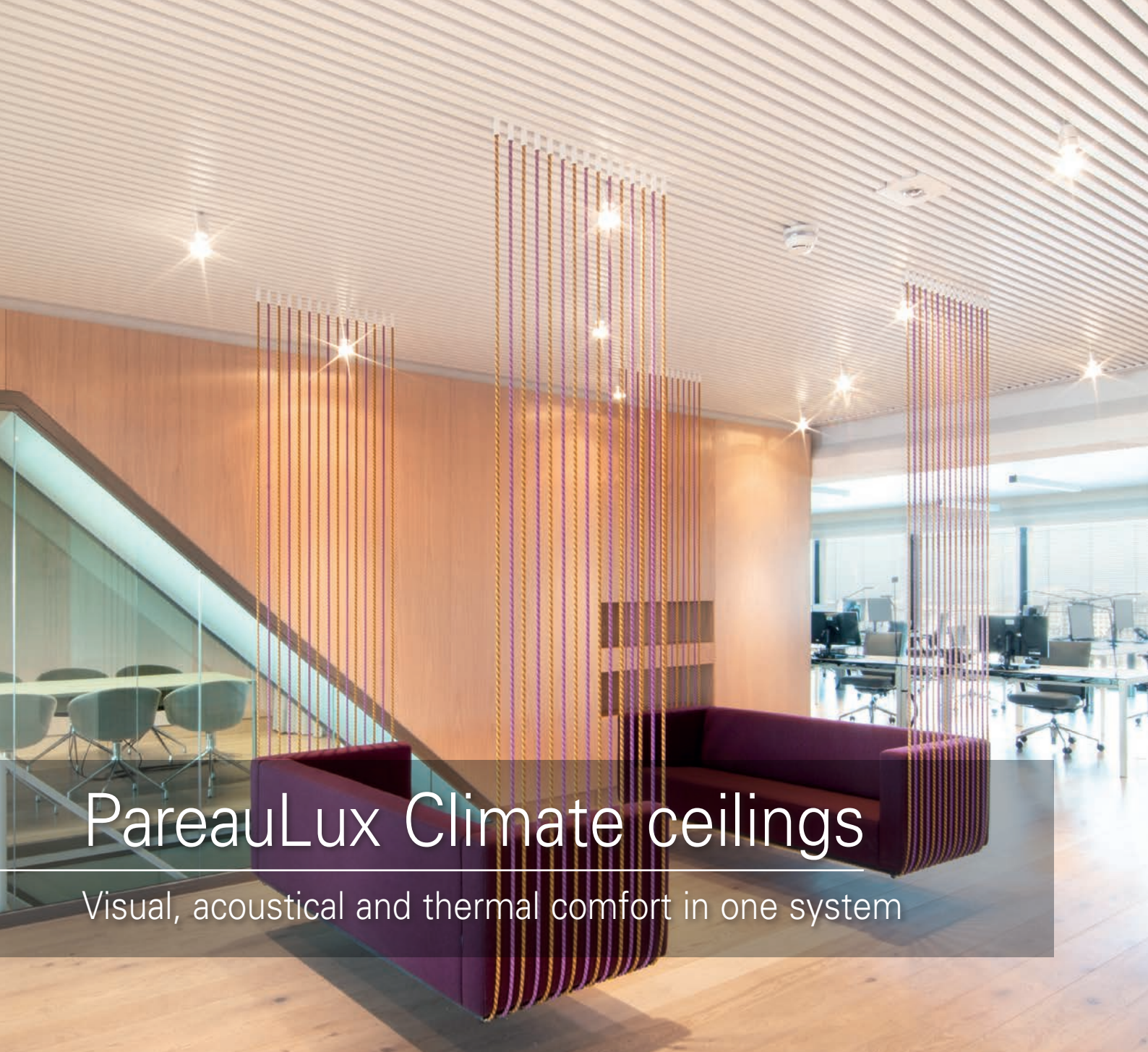


PareauLux Climate ceilings





PareauLux Climate ceilings

Visual, acoustical and thermal comfort in one system

Two top players join forces for an ultimate comfort experience.

The PareauLux linear climate ceilings have been created through a collaboration of two top players in the (climate) ceiling industry. Hunter Douglas for the distinctive design and material use of the panels and Inteco for the innovative climate system with an extremely high cooling capacity.

With this product you are assured of a comfort experience in the widest sense of the word.

Cover : NS Head Office (Katreinetoren), Utrecht, The Netherlands
Product : Linear 30BD acoustic + ceiling system
Architect: NL Architects



Operation climate ceiling

The 'engine' of the PareauLux climate ceiling system consists of elements of finely meshed expanded metal on which copper pipe grinders are soldered. In these so-called climate elements, cold or hot water is supplied, depending on whether there is a need for cooling or heating in the room. The heat exchange takes place on the basis of a combination of radiation and convection, which is experienced as very pleasant. This in contrast to so-called all-air or convective systems, such as fan convectors or split units, where energy transfer takes place exclusively by means of air.

The power of the PareauLux Climate ceilings

Visual, acoustical and thermal comfort in one system.

- 80% more capacity than a standard climate ceiling⁽¹⁾
- Unprecedented design freedom
 - Materialisation (felt, wood, aluminum, steel or a combination of materials)
 - Visualisation (panel distance, total ceiling design and colour)
 - Acoustics (α_w value up to 0.90)
- Collaboration product of 2 top players in the market
- A-quality parts and total application
- Sustainable solution
- Acoustic comfort
- Hardly combustible⁽²⁾

⁽¹⁾ PareauLux 110 - 130 W/m² in accordance with EN 14240

⁽²⁾ Depending on the regulations of the country concerned

In climate ceilings, the air supply is determined on the basis of the need for fresh air and not the required cooling capacity. The air circulation in the room is therefore lower than with convective systems and the risk of draft is minimal. The temperature is adjustable per room or control area.

INHOUD	Pagina
Two top players in the market	2
Operation of a climate ceiling	3
PareauLux-HeartFelt®	4
PareauLux-30BD	5
PareauLux-solid wood grid	6
Sustainability	7
Benefits of a climate ceiling	8
Inteco	9
Hunter Douglas	10

Project : NS Head Office (Katreinetoren), Utrecht, The Netherlands
Product : Linear 30BD acoustic + ceiling system
Architect: NL Architects

HunterDouglas 
Architectural



 **Inteco**

Designed to work for you



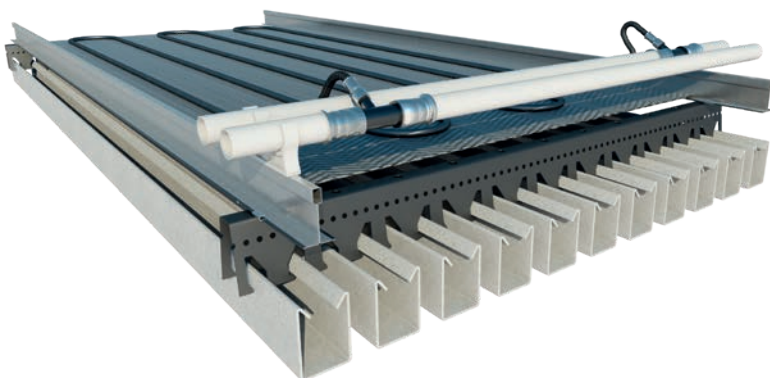
PareauLux-HeartFelt®

Optimal cooling, warm design

PareauLux-HeartFelt®

PareauLux-HeartFelt® is a modular, linear, felted panel made of non-woven thermoformed PES fibers.

The felt panels are available in seven shades of gray and five earth tones and offer designers many creative possibilities. The modular system allows them to vary virtually endlessly with panel size, joint width, mounting height and color.



System building PareauLux-HeartFelt®

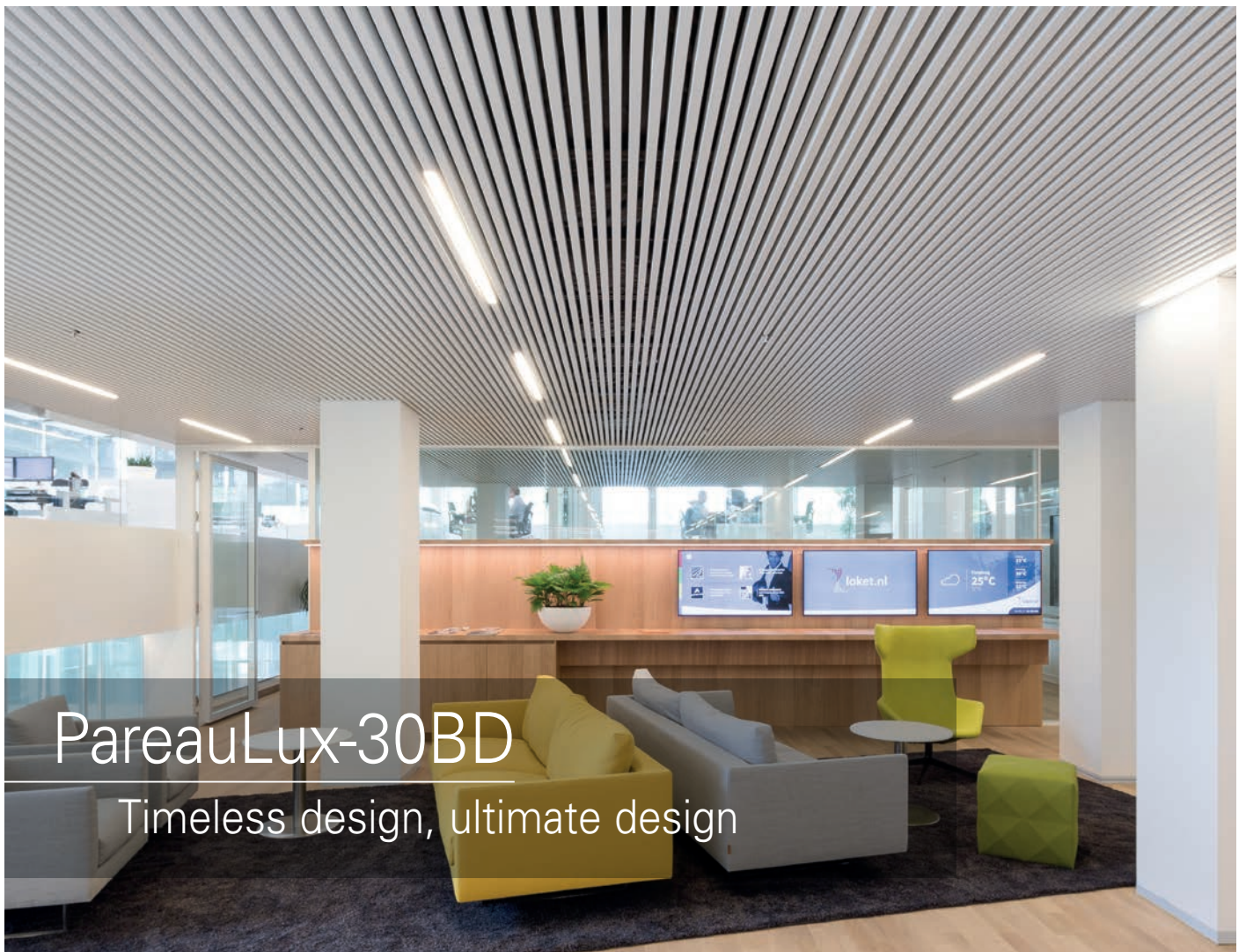
Acoustics

The acoustic comfort in an office, school or public building is important to our well-being as poor acoustics can affect health, communication, safety, productivity and learning performance.

The high-quality acoustic ceiling products from Hunter Douglas offer the best solution for excellent acoustic performance, comfort and an aesthetic appearance.

The absorption values (α_w) of the HeartFelt® ceiling vary between 0.45 (module 100) and 0.70 (module 50). For additional absorption (approx. 0.95), a mineral wool blanket can be applied in black PE foil above the climate element.

Project : Amstelgebouw, Amsterdam, The Netherlands
 Product : HeartFelt® Linear
 Architect : Ericis Advisors and Design



PareauLux-30BD

Timeless design, ultimate design

PareauLux-30BD

PareauLux-30BD ceiling panels offer interesting design options.

Our ceiling systems are characterised by versatility and offer interesting visual effects, such as radial and diagonal patterns, finishes, colors and curves.



System building PareauLux-30BD

PareauLux 30BD ceiling panels are made of durable roll-formed aluminum, finished with a coating for a long lifespan with little maintenance.

Acoustics

The PareauLux-30BD ceiling panels can be perforated with round holes of 1.5 mm (1 mm and 2 mm optional available) and are provided with a sound-absorbing membrane to improve the acoustic comfort in a room.

Project : The Corpac House, Tilburg, The Netherlands
 Product : PareauLux-30BD acoustic + ceiling system
 Architect : Cepezed



PareauLux-solid wood grid

Comfort with a natural look

PareauLux-solid wood grid

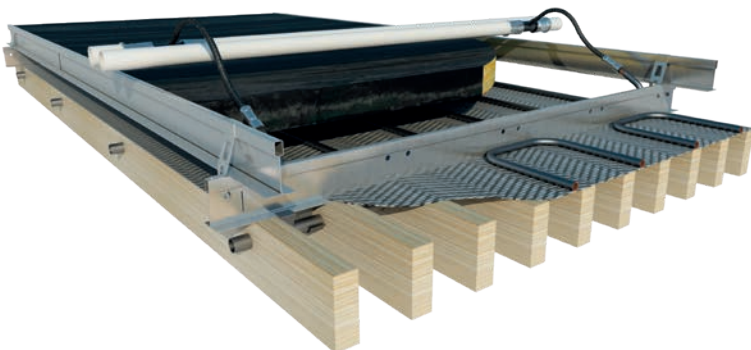
PareauLux-solid wood grid is an ideal solution with a natural look.

The flexibility of the product range ensures complete design freedom. The core of slats consist of MDF engineered solid wood (ESW) with on the three visible sides a decorative top layer of veneer, melamine decor or a RAL color.

Due to the form stability of ESW there is a lot of freedom in the width and thickness dimensions of the slats. The slats are factory-made into a grill element by means of a metal dowel or plywood cross-connector. Of course, the Grill meets the most stringent requirements in relation to fire safety and emissions and are fully recyclable after many years of use.

Acoustics

Acoustic comfort is of great influence on the experience of a room. For the absorption of sound energy, a mineral wool blanket is applied in black PE foil above the climate element.



System building PareauLux-solid wood grid

Project : Town hall, Didam, The Netherlands
 Product : Solid Wood Grid Ceiling - EV Essen
 Architect : De Twee Snoeken



Project: Brandmasters Oosterhout, The Netherlands
Architect: Van Oers Weijers Architecten

SUSTAINABILITY OF A CLIMATE PATCH

Climate ceilings are energy-efficient. The for cooling and heating required water temperatures are perfectly in line with sustainable generation systems such as heat pumps and other sources and also have a positive influence on the efficiency of heat and cold generation systems in general. This results in a substantial reduction in energy costs compared to conventional cooling and heating methods. Not only financially attractive, but also beneficial for the environment.

Climate ceilings are in line with the integration of sustainability in society and in particular within the labor process. Employees' health and well-being are paramount because they are the most important capital of a company. The fight for good staff, the fascination and binding of millennials requires another type of accommodation and process approach.

SUSTAINABILITY OF INTECO CLIMATE SYSTEMS

The materials that are part of the Inteco climate system are of a high quality level so that a long life is guaranteed. As a result, Inteco ceiling applications run parallel with the lifecycle of a building.

In addition, when designing our products and the choice of materials, we take into account life after use, ie the circular economy. Within our own R&D department maximizing the value retention of the components is an important item. We do this by working on technical innovations such as using natural materials or improving the recyclability of a product. The production process of Inteco is ISO 14001 and ISO 9001 certified.

HUNTER DOUGLAS IS COMMITTED TO SUSTAINABLE PRODUCTION METHODS

Our paint and aluminum smelting processes are the reference for clean production processes. Hunter Douglas products are for more than 90% made from recycled aluminium. The attention we pay to quality control ensures that the production process, materials, machines and the finished product meet the highest standards.

Our production process is certified according to ISO 9001 and ISO 14001 (HeartFelt® and 30BD). Because most panels can easily be dismantled by hand, there is good access to all installations in the plenum.

All Luxalon® metal ceiling systems from Hunter Douglas have a high reaction to fire classification according to EN 13501-1. For more information visit our website: www.hunterdouglas.nl / www.hunterdouglas.be

Benefits of a climate ceiling

ARCHITECTURE

- Climate ceilings can be adapted to the modulation of the building.
- The climate technology is non-visible integrated in the ceiling.
- The ceiling forms a distinctive part of the total architecture.
- Stylish integration with built-in components such as lighting and air vents.

USER / BUILDING OWNER

- Low operating costs:
 - Low energy costs
 - Maintenance-free system.
- Long service life (> 20 years).
- Positive influence on sustainability certifications like BREEAM.

THE WORK CLIMATE

- Always a comfortable and even temperature due to radiation and high cooling and heating capacity.
- Low air speeds and therefore no draft and dust displacement.
- High acoustic comfort; quiet system and pleasant acoustics due to the sound-absorbing capacity of the ceiling.
- The possibility of controlling room temperature on an individual basis.



Project : The Corpac House, Tilburg, The Netherlands
Product : Linear 30BD acoustic + ceiling system
Architect : Cepezed

Comfort without Compromise

For more than 20 years, Inteco's credo has been 'Comfort without Compromise'. We offer a complete comfort experience and do not make concessions. We produce climate ceilings and induction units and work from the following expertise:

- **Customisation**

The goal of Inteco is not only to deliver a climate ceiling, but taking care of a complete ceiling integration in the building concept. We ensure that the customised project is perfectly in line with related disciplines such as air control, lighting or interior decoration.

- **Design**

Inteco has professionals with large experience in the metal ceiling industry. They can creatively think along with you in the field of product application, material, technology and design. We also have our own production facility, R&D department, test room and mock-up department. With this we can visualize various options and facilitate your choice.

- **Renovation**

From this expertise we come up with effective solutions that reflect or even strengthen the authentic features of a building. The dimensions of the ceiling, and of all components that are part of it, are fully aligned with the building concept.

- **Innovation**

Our passion for technology makes that we have already been innovating for more than 20 years. With various patent-bearing products we are experts in the climate ceiling and induction unit branch. The innovations meet to all applicable standards and guidelines in the market.

- **Durability**

Within our own R&D department, maximizing the value retention of the components is an important item. We do this by working on technical innovations such as using natural materials or improving the recyclability of a product.

MORE INFORMATION

Would you like to know more about the services Inteco offers?

Contact our sales office: +31 (0) 411 658 800

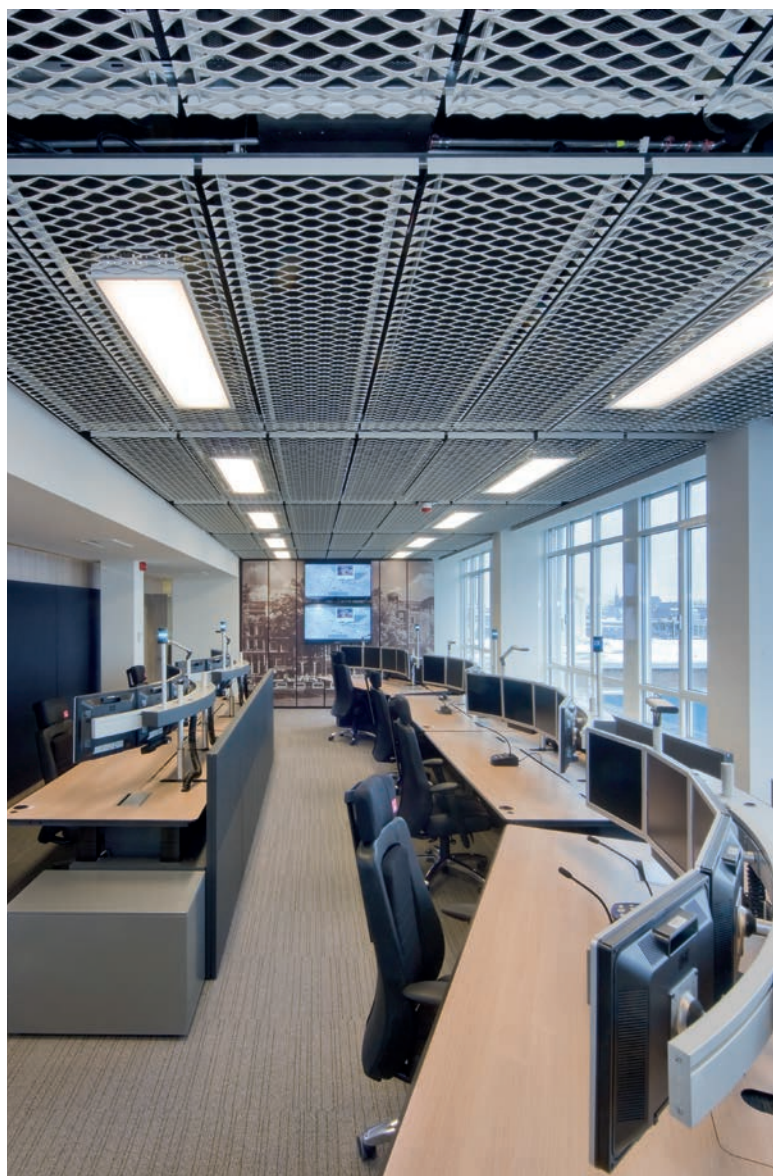
Send us an e-mail : sales@inteco.nl

Visit our website : www.inteco.nl

Designed to work for you

Hunter Douglas is a global player within the field of modern architecture. We understand the conflict between form and function better than anyone, and enrich the market with inspiring solutions that strengthen the aesthetic appeal of buildings and their functionality in terms of indoor climate, energy use and acoustics.

We develop clever and aesthetically appealing solutions in collaboration with architects and designers to control heat, light, sound and energy. We are also inspired by real-world challenges and ideas as well as developments in technology and materials. All our products are thought out in great detail to make a difference to both architects and end users.



© Registered trademark of Hunter Douglas - a HunterDouglas® product. © Copyright Hunter Douglas 2020. No rights may be derived from the text or the illustrations or examples accompanying the text. Materials, parts, compositions, designs, versions, colours and the like may differ without prior warning.



Printed on EU Ecolabel certified paper



▲ SUN LOUVRES

CEILINGS ▼



▲ CEILINGS

FAÇADES ▼



Architectural services

We support our business partners with a wide range of technical consulting and support services for architects and installers. We assist architects and developers with recommendations for materials, shapes, dimensions, colours and finishes. We also help create design proposals, visualisations and technical drawings. Our services to installers range from providing detailed installation drawings and instructions.

More information

Want to know more about the services that Hunter Douglas offers?

Contact our sales office:

+31 (0) 10 - 496 22 22 (the Netherlands)

+32 (0) 9 - 340 44 66 (Belgium)

Send us an e-mail:

info@hunterdouglas.nl

info@hunterdouglas.be

Visit our website:

www.hunterdouglas.nl

www.hunterdouglas.be



Hunter Douglas products and solutions are specifically designed to improve the indoor climate and save energy. They create an environment that is pleasant, healthy, productive and sustainable.



Hunter Douglas aims to produce sustainable products. Our painting and aluminium smelting processes are regarded as setting the bar for the most important standards in clean production methods. All aluminium products are 100% recyclable at the end of their lifecycle.



Head office in The Netherlands

Inteco B.V.
Van Salmstraat 71
5281 RP Boxtel
The Netherlands
Tel. +31 (0)411 668 800
sales@inteco.nl
www.inteco.nl



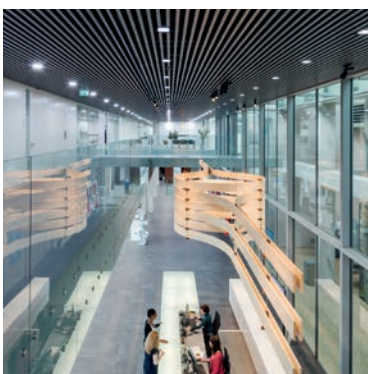
Establishment Denmark

Inteco ApS
Denmark
Tel. +31 (0)411 668 800
info@inteco.dk
www.inteco.dk



Establishment Belgium/ Luxembourg

Inteco Sarl
2-4 Rue Edmond Reuter
L-5326 Contern
Luxembourg
Tel. +352 263 930 85
info@inteco.lu
www.inteco.lu



Ceilings



Façades



Sun Louvres

Hunter Douglas Architectural The Netherlands

Piekstraat 2 - 3071 EL Rotterdam
Postbus 5072 - 3008 AB Rotterdam
The Netherlands
Tel. +31 (0)10 - 496 22 22
Fax +31 (0)10 - 423 78 90
info@hunterdouglas.nl
www.hunterdouglas.nl

Hunter Douglas Architectural Belgium

Industriezone E17/1080
Dijkstraat 26 - 9160 Lokeren
Belgium
Tel. +32 (0)9 - 340 44 66
Fax +32 (0)9 - 340 44 86
info@hunterdouglas.be
www.hunterdouglas.be