



**Parent
Handbook**



Dear Parents,

Thank you for allowing your children to attend our AWANA program. We look forward to another year of fun, learning and growing in Christ.

In order for things to run more smoothly, we would like to pass on some information. If you have any questions feel free to discuss them with your child’s leader, one of the directors or one of the commanders (Elvira Howell or Delia Peterson).

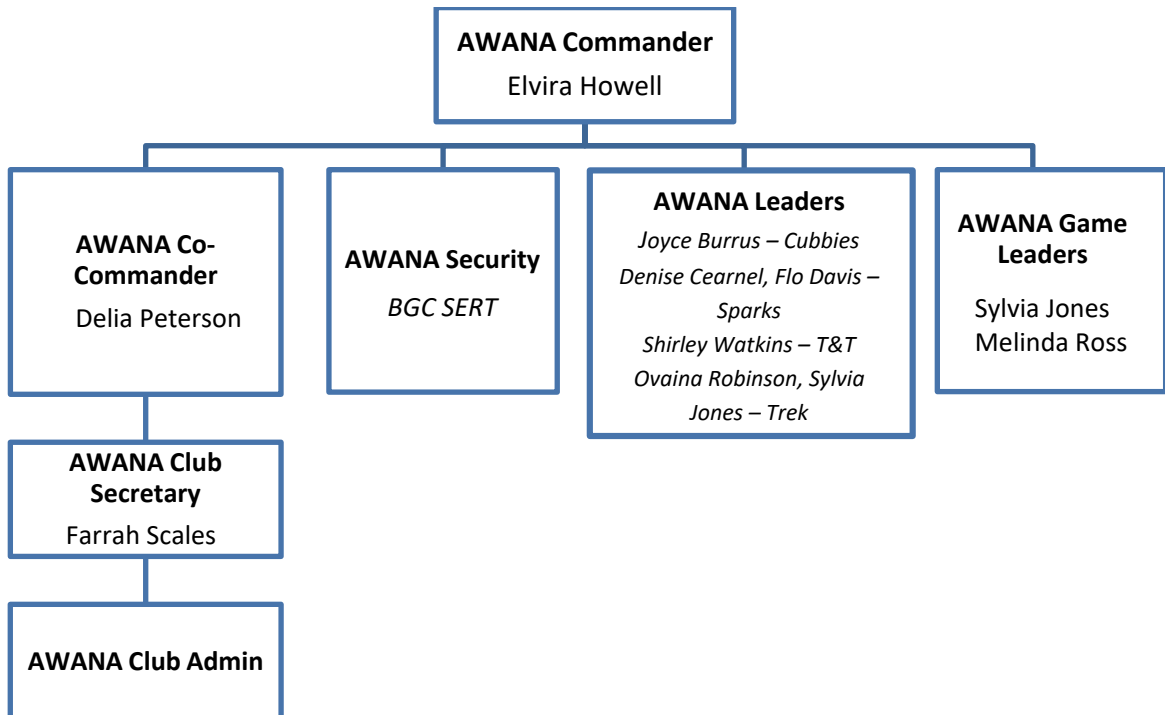
The hours for AWANA are 6:45 pm – 8:15 pm on Wednesday. We will have the same schedule as the Adult Refresh (i.e. Bible Study) at Baptist Grove Church. We would like for the children not to arrive earlier than 6:45 and to be picked up no later than 8:20.

Please be mindful of the pick up time since some of our leaders have employment commitments for the next day. The children are not allowed to leave until an adult comes to get them. We require this for the safety of the children.

We think that by giving on a regular basis, the children learn an important lesson about supporting God’s work. This is true whether they give a nickel each week or a dollar. We encourage you to communicate with us as often as you like. You can reach us by e-mail or by phone. The church phone number is 919.787.4528. The calendar will especially come in handy when you need to know what events are coming up soon or what the next theme night is going to be.

For His Glory,

AWANA Commander



The Pledge of Allegiance to the American Flag

I pledge allegiance to the Flag of the United States of America and to the Republic for which it stands,
one nation under God, indivisible, with liberty and justice for all.

The Pledge of Allegiance to the Bible

I pledge allegiance to the Bible, God's Holy Word, I will make it a lamp unto my feet and a light unto my
path and will hide its words in my heart that I might not sin.

The Pledge of Allegiance to the AWANA Flag

I pledge allegiance to the AWANA flag which stands for the AWANA clubs whose goal is to reach boys
and girls with the Gospel of Christ and to train them to serve Him.

The AWANA Theme Song

(words by Clarence W. Jones and Herbert Booth)

Firmly AWANA stands, led by the Lord's commands;
"Approved workman are not ashamed,"
Boys and girls for his service claimed!
Hail! AWANA! On the march for youth;
Hail! AWANA! Holding forth the truth;
Building lives on the Word of God, AWANA stands!
Our Savior following with steps unfaltering,
And love unaltering, His praise we sing;
His banner over us, in service glorious,
We'll fight victorious for Christ our King!
Everyone shout-YOUTH ON THE MARCH!



AWANA is an international Bible-centered youth organization. AWANA comes from the first letters of

Approved **W**orkman **A**re **N**ot **A**shamed (2 Timothy 2:15).

Baptist Grove Church’s AWANA ministry provides a program for 3 year olds through 8th Grade.

We present the gospel every Wednesday night in a way that each child can understand, no matter what age they are. We understand that salvation is a free gift, that we cannot earn it or buy it, and that Jesus has already paid the price for our sins on the cross. (Romans 3:23)

The key to winning the battle against sin is to memorize scripture and hide it in our hearts. This is what the AWANA program is all about. AWANA strongly emphasizes memorizing the Bible to help us during the battles in life, so we can have a victorious life in Jesus.

CLUB	AGE or GRADE
CUBBIES	Pre-School (3 – 4 yrs old)
SPARKS	Kindergarten, 1st – 2nd grade
T&T (Truth & Training)	3rd – 5th grade
TREK	6th - 8th grade



Cubbies is for 3 and 4 year olds who have a positive and fun time that emphasizes parental involvement and Bible memorization through the AppleSeed book.



Sparks is divided into three years from Kindergarten – 2nd grades. Each year with a unique rank: *HangGlider*, *WingRunner* and *SkyStormer*. Each year, Sparks clubbers:

- explore the biographies of people of the Bible from a new portion of Scripture
- memorize Bible verses
- complete handbook activities



T&T (Truth and Training) curriculum teaches kids the truth of God's Word, trains them to follow Him and practice His grace. Each of the three curriculum include 32 lessons. In these 32 lessons, they will spend time learning about the character and nature of God, the structure and sequence of the Bible, the redemption narrative, and key discipleship practices!

- T&T Grace in Action
- T&T Evidence of Grace
- T&T Agents of Grace



A middle school ministry

TREK challenges students to wrestle with the three most important questions they're asking in middle school:

- Who am I?
- Why am I here?
- Who's with me?

By allowing students to dive deep into the Scriptures and answer these questions for themselves, we allow them to own their faith and discover what they actually believe.

Clubber Guidelines



In order to have a safe, enjoyable, orderly environment, our club has established some guidelines. All clubbers are expected to follow the guidelines to ensure a FUN NIGHT FOR ALL!!!

1. Respect your fellow club members, leaders, and teachers - treat them as you wish to be treated.
2. Everyone should participate - whether playing games, listening, studying, or singing - all are expected to be involved. If for some reason you should not want your child to participate in Game Time, please send a note to the club leader with your child.
3. Leave all toys, food, candy, gum, drinks, cell phones, electronic devices, and athletic equipment at home.
4. Please make sure that all clothing, books, Bibles, etc. are clearly marked with your child's name.
5. Along with the AWANA uniform, it is important that clothing suitable for active games be worn. Tennis shoes should be worn especially for game time. Please do not wear immodest or revealing clothing.
6. Come to attention whenever a leader begins to count to FIVE.
7. Always try to wear a smile. Everyone will enjoy you more.
8. HAVE FUN! AWANA is meant to be fun!!!

How Does My Child Get Started?

A club **entrance booklet** is usually the first step in AWANA achievement for each club. Parents should help their child complete the booklet within the first 2-3 weeks of advancing to a new club. When the booklet is finished, your child is then eligible to become an official member of that AWANA Club, purchase a Club Handbook, and wear the Club's AWANA uniform. **(The entrance booklet may not be required for all clubs, so please check with the Club Director for specific details.)**

Please note that uniforms are an important component of the AWANA ministry. They encourage an orderly and disciplined club, reinforce the sense of community and provide a place to display achievement awards.

How is Time Spent in AWANA

Handbook Time

Leaders listen to clubbers recite verses that they have memorized. They also work one-on-one with clubbers to help them complete their handbooks.

Game Time

AWANA specific games feature fun activities they won't find anywhere else. Although games are competitive in nature, emphasis is placed on developing team spirit, good sportsmanship and self-confidence. Pledges to the American flag, the Bible, and the AWANA flag are led.

Council Time

The goal of Council Time (also known as Large Group Time) is to focus clubbers' attention on Bible truths and relate them to daily life. The Bible message will encourage unsaved clubbers to accept Christ as Savior and saved clubbers to grow in their relationship with Christ. Clubbers are recognized for their hard work with awards that are to be worn on their AWANA uniforms.

Cost and Dues

There is no charge for the program itself. The cost for the children's handbooks will be \$11. Typically, a child will only need one handbook each year. A few ambitious children might need two. The AWANA uniforms are priced as follows:

Club	Uniform Vest, Jersey or T-Shirt	Handbook	Optional Book Bag
Cubbies	\$12.00	\$11.00	\$7.00
Sparks	\$12.00	\$11.00	\$7.00
T&T	\$16.00	\$11.00	\$9.00

We will have scholarships available for the purchase of the handbooks and uniforms. Uniforms are not required. Please see the Commanders for information on the scholarships.

Payments may be made by cash or check (made out to "Baptist Grove Church"). If the cost of the handbooks and uniforms are a financial problem for you, please talk to one of the commanders about other arrangements. We do not want your child to miss out on this program because financial reasons.

Dues are not required to attend AWANA, but we encourage every child to bring club dues each week. Doing this encourages ownership in the club, it also teaches responsibility and stewardship. Dues are .50 per night.

Security and Check-In/Check-Out Policy

Child safety is important to Baptist Grove Church. All leaders and volunteers are asked to participate in Child Protection Training to assure the safety of each and every child.

Parents/Guardians or authorized persons must enter the building with the clubber. Do not send your child in alone. To ensure that this is being done, you will now need to sign your child in at AWANA each night using the checkin Kiosk. At the end of club you need to come in with the security tag for child check out. Please understand that while this may be inconvenient it is to protect YOUR child as well as every other clubber at AWANA.

YOU ARE REQUIRED TO CHECK IN YOUR CHILD EACH NIGHT!

SAFETY FIRST!!

***Please be considerate of the workers and pick up your
child by 8:15 PM***

Code of Conduct and Discipline Policy

- Clubbers will keep their hands to themselves
- There will be no talking when a leader or another person is talking
- Clubbers will speak to each other and their leaders with respect
- No running or playing in the hallways, stairwells, or between buildings
- Clubbers should be as quiet as possible in the Discovery Zone during handbook time so that others will not be disturbed
- At times during club meetings we will have children meet with the commander if they misbehave.

We utilize two different “count methods” for discipline:

FIVE-count

This method is used to control a group’s behavior. To bring order to the group a leader will raise his/her hand and begin counting to five. When the group hears the count begin they should become quiet and await further instructions.

THREE-count

This method is used to correct an individual’s behavior. If a child misbehaves the leader will warn the child to stop whatever he/she is doing. If the child continues with the behavior the leader will give a “1” count. The leader will discuss the problem with the child to ensure that he/she understands why the behavior is inappropriate. If the child continues to misbehave the leader will give him/her a “2” count and take them to their club director to discuss the situation. If the child still continues to misbehave a “3” count will be given, the child will be taken to the Commander and the parent/guardian will be notified. Depending on the nature of the behavior the child may be required to sit out during game time, or in extreme cases may be asked not to return to AWANA.

Wellness Policy

Children **SHOULD NOT** attend AWANA if they have any of the following symptoms:

- Fever – 101 degrees or higher within the last 24 hours
- Vomiting or diarrhea within the last 24 hours
- Runny nose or bad cough if accompanied by other symptoms and/or colored discharge
- Any rash that is suspected to be contagious
- If your child is prescribed with an antibiotic, they must have been on the antibiotic for a minimum of 48 hours prior to attending AWANA

Inclement Weather Policy

AWANA Clubs at Baptist Grove Church will be canceled when schools in Wake County Public Schools are closed due to inclement weather. AWANA may also be canceled due to inclement weather at our discretion. This information will be listed on the church web site and local TV stations.

Parents as Partners

Parental involvement is crucial to a child’s spiritual development. AWANA connects our church with parents as partners to nurture children in the ways of the Lord. You can be involved by:

- encouraging your child to come to club each week
- helping them to memorize verses in at least one section of their entrance booklet or handbook each week
- showing excitement over their achievements
- communicating any special needs to leaders



Our Commitment

We hope this handbook answers most of your questions and concerns about AWANA. If you would like more information, please do not hesitate to contact us.

We feel that AWANA is a vital part of your child’s spiritual growth. Allowing your children to be a part of this ministry not only teaches them the Word of God, but also sets an example for commitment and faithfulness.

We are very blessed to have faithful and committed leadership within this ministry to set the example for our precious children.

Again, we want to thank you for allowing us to minister to your child through the AWANA program at Baptist Grove Church.

Contact Information

Name	Role	Contact Information
Elvira Howell	Commander	(919) 787-4528 or discovery@baptistgrovechurch.org
Delia Peterson	Co-Commander	dhowell0628@gmail.com

Baptist Grove Church

7109 Leesville Road
 Raleigh, NC 27613
 (919) 787 – 4528