

TRAVEL WITH FRIENDS IN 2016

Paris, Montmartre © David Giral Photography



Paris and the Seine

THROUGH THE ARTIST'S EYES

with Wendy Sharpe and Bernard Ollis
08–19 May 2016 (12 days)



Paris and the Seine

THROUGH THE ARTIST'S EYES



TOUR LEADERS

Wendy Sharpe is one of Australia's most awarded artists. Her awards include The Sulman Prize, The Portia Geach Memorial Award (twice), The Archibald Prize, a commission by the Australian War Memorial as an Australian Official Artist to East Timor, and many others. Her International artist residencies include Paris, Egypt, Mexico, China and two in Antarctica. She has held over 40 solo exhibitions around Australia and internationally.

Bernard Ollis is a major artist and art educator. He has held over 50 solo painting exhibitions throughout Australasia and Europe. His work is in the permanent collections of most state and regional galleries as well as museums including the National Gallery Victoria, Queensland Art Gallery, Parliament House and the Australian National Gallery Canberra. Bernard has taught fine art for over 30 years including teaching as the Head of Fine Art at La Trobe University and Director of the National Art School Sydney for 11 years.

Wendy and Bernard live and work in Sydney and also in their apartment/artist studio in Montmartre, Paris. They look forward to sharing their love of Paris and favorite places with you!

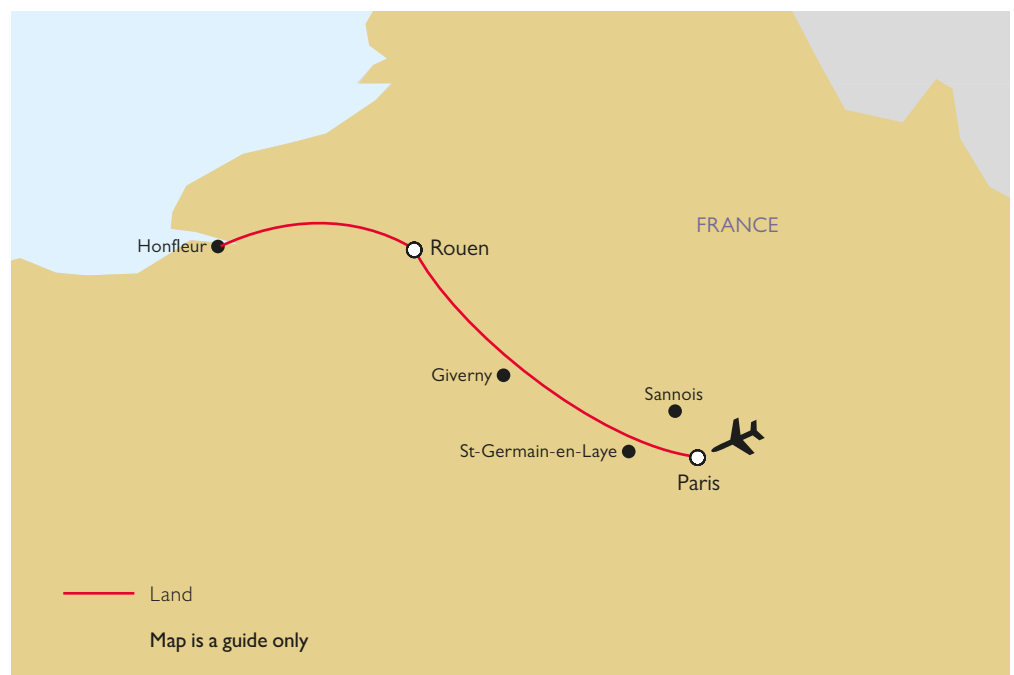
For centuries Paris and the River Seine have provided artists with a rich source of inspiration, and rewarded art lovers with a treasure trove of extraordinary artworks.

Join acclaimed Australian artists Wendy Sharpe and Bernard Ollis as they take you to their favourite haunts in and around their adopted home town of Paris. See famous museums, intimate gallery spaces, artist walks and iconic locations loved by artists throughout history.

Discover anew the wonders of the City of Light, including the latest museums, galleries and exhibitions, and journey along the River Seine from Paris to Honfleur on the Atlantic.

At a glance...

- Enjoy a leisurely 8-days in the heart of Paris, followed by four days in Rouen
- Join Wendy and Bernard for illustrated talks, walks and guided visits to major museums, smaller galleries and artists' studios, including a visit to their own apartment/studio in Montmartre
- See the new Foundation Louis Vuitton, the re-opened Picasso Museum and the brand-new Paris Philharmonie, plus, of course, current exhibitions
- On leisurely day trips, explore landscapes, towns and sites along the River Seine including St-Germain-en-Laye, the 'Île des Impressionistes', Sannois, Monet's home and garden at Giverny and Honfleur



Itinerary

Sat 07 May 2016

Depart Australia

Suggested departure from Australia on Emirates/Qantas flights to Paris. Overnight in flight.

Sun 08 May

Arrive Paris

Mid-afternoon arrival in Paris and check-in to your hotel.

This evening join Wendy and Bernard for a welcome briefing and dinner. **D**

Mon 09 May

Paris

Begin your exploration of Paris on a full day orientation tour by coach exploring the Left and the Right banks of the River Seine.

Historically, the right bank is associated with luxury, power and business with monuments such as the Presidential Palace on the Champs Elysées, Place Vendôme, Tuileries Gardens, Rue de la Paix and Garnier's grand Opera House. The left bank is the traditional home of students and intellectuals such as Jean-Paul Sartre, Simone de Beauvoir and Albert Camus who frequented the famous Les Deux Magots café in Saint Germain des Prés. Sorbonne University also sits on the left bank as does Montparnasse, the centre of bohemian art and life at the beginning of the 20th century.

Enjoy lunch on board a Seine river cruise, boarding at the foot of the Eiffel Tower for a voyage of discovery.

After lunch continue your exploration of both sides of the river. Evening at leisure. **B L**

Tue 10 May

Paris

Following a morning talk on Picasso, head to the Picasso Museum.

On the death of the Spanish-born artist Pablo Picasso (1881-1973), who lived most of his life in France, the French State inherited one quarter of his works from the family in lieu of death duties, and used them to establish the Musée Picasso, which opened in 1986. Housed in the beautifully restored Hotel Sale, the museum reopened in October 2014 after a five year closure.

Afternoon at leisure to further explore the museum and the Marais. **B**



Wed 11 May

Paris

This morning enjoy a talk followed by a visit to the *Centre Georges Pompidou* (also known as the Pompidou Centre), a complex in the Beaubourg area of Paris, it is home to the Public Information Library, the National Museum of Modern Art (which is the largest museum for modern art in Europe), and IRCAM, a centre for music and acoustic research.

Afternoon at leisure.

This evening transfer to the Paris Philharmonie for a pre performance dinner followed by a concert of the Orchestre de Paris conducted by Christoph Eschenbach with Matthias Goerne (baritone). **B D**

ORCHESTRE DE PARIS – PARIS PHILHARMONIE

Richard Wagner Monologues from *Tristan und Isolde* and *Die Walkure*
Brahms Symphony No. 2

Thu 12 May

Paris

Following a morning talk on Artists and the Musée d'Orsay, head across the river to the Left Bank to enjoy a walking tour. Begin with a visit to the Delacroix Museum, a small museum set in the last studio apartment of Eugène Delacroix. Continue to the 17th century Church of Saint-Sulpice with its gnomon, a device used to determine the equinoxes as well as the exact time. Adorning the walls of the Chapel of the Holy Angels are two magnificent Delacroix frescoes.

Following time for lunch at leisure continue to the Musée d'Orsay. Opened in 1986, Victor Laloux's superb turn-of-the-century building was originally built between 1898 and 1900 as the Gare d'Orsay, a Beaux-Arts railway station in the heart of Paris. It narrowly avoided demolition in the 1970s. The new museum presents the rich diversity of visual arts from 1848 to 1914 and explains the social, political and technological context in which they were created.

Evening at leisure. **B**



Friday 13 May

Paris

Today is set aside for visits to special exhibitions. Subject to exhibition schedule and what is on, possible visits to either the Grand Palais, Petit Palais or the Pinacothèque. Plus a visit to the Foundation Louis Vuitton. Opened in late 2014 and designed by Frank Gehry the building sits among the century-old trees of the Jardin d'Acclimatation and is a private cultural initiative, whose aim is to promote and support contemporary artistic creation for a wide French and international audience.

This evening enjoy dinner at a local brasserie. **B D**

Sat 14 May

Paris

Full day excursion into the countryside, along the Seine River to the west of Paris. Begin with a visit to the Maurice Denis Museum, a museum dedicated to Nabi art located near the town of St-Germain-en-Laye.

Time to explore the small town of St-Germain-en-Laye before heading to the Île des Impressionistes, which lies between the banks of the Seine. Discover the various paths taken by Monet, Renoir and other Impressionists, as they roamed the island in search of painting spots where they could capture the dazzling light and atmosphere of life around the river. Today, reproductions of their paintings have been placed on the sites where they were first created.

Enjoy lunch in the Restaurant Fournaise, where Renoir painted 'Luncheon of the Boating Party' followed by a visit to the Musée Fournaise.

On the return to Paris stop in Sannois to visit the Musée Utrillo-Valadon, devoted to the painter Suzanne Valadon and her son Maurice Utrillo. **B L**

Sun 15 May

Paris

Begin the day with a walking tour of Montmartre. Dominated by the Basilica of the Sacred Heart, Montmartre sits on a hill to the North of Paris. Many artists had studios or worked in or around Montmartre, including Salvador Dalí, Amedeo Modigliani, Claude Monet, Piet Mondrian, Pablo Picasso, Camille Pissarro, Vincent van Gogh and Toulouse Lautrec.



Musée D'Orsay

After time at leisure for lunch visit the Musée de Montmartre, home to many famous artists and writers such as Renoir who painted his celebrated *La Balançoire* and *Le Bal du Moulin de la Galette* here in 1876. The museum also includes the recently opened studio of Suzanne Valadon and her son, Maurice Utrillo. The gardens have been renovated according to Renoir's paintings. They provide a good view of the vineyard, which has existed since the middle ages and was replanted in 1933.

Continue to the apartment studio of Wendy and Bernard for a pre-dinner aperitif followed by dinner in a local restaurant. **B D**

Mon 16 May

Paris – Giverny – Rouen

After breakfast depart Paris and stop in Giverny to visit Monet's house and garden.

Enjoy lunch at a local restaurant and continue to Rouen, with a stop to visit La Maison a Vaisselle Cassée (House of Broken Crockery). Robert Vasseur, a former milk-delivery driver, started in 1952 to decorate his house and garden near Rouen with shells and broken crockery.

Early evening arrival in Rouen. Evening at leisure. **B L**

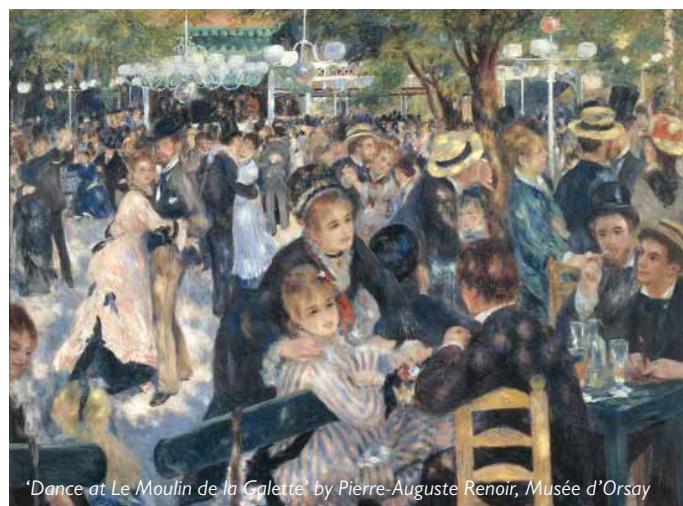
Tue 17 May

Rouen

Following a morning talk on Monet, walk to Rouen Cathedral. Rouen's stunning Gothic cathedral, built between the late 12th and 16th centuries, was the subject of more than 30 canvasses painted by Monet at various times of the day and year. The 75m-tall Tour de Beurre (Butter Tower) was financed by locals in return for being allowed to eat butter during Lent (or so the legend goes) and the church was the tallest building in the world on completion in 1880 with a height of 151m.

Continue with a visit to Musée des Beaux Arts which features paintings, sculptures, drawings and *objets d'art* from every school, ranging from the 15th century to the present day.

Afternoon at leisure to further explore Rouen. Dinner at a local restaurant. **B D**

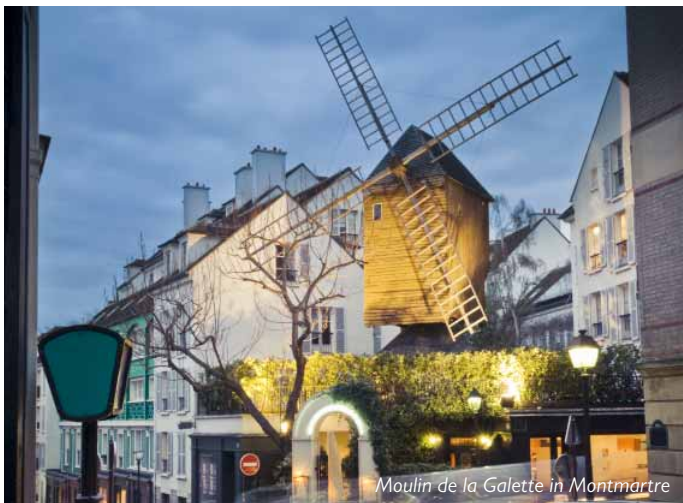


'Dance at Le Moulin de la Galette' by Pierre-Auguste Renoir, Musée d'Orsay



W. Sharpe

Wendy Sharpe 'Paris Roofs' (detail), gouache



Moulin de la Galette in Montmartre



Great clock of Rouen

Wed 18 May

Rouen

Journey 90 kms north out of Rouen to Honfleur, a town located on the southern bank of the estuary of the Seine. It is known for its old, beautiful picturesque port, characterised by its houses with slate-covered frontages. It was painted many times by artists, including Gustave Courbet, Eugène Boudin, Claude Monet and Johan Jongkind, who formed the *école de Honfleur* (Honfleur school) which contributed to the appearance of the Impressionist movement. Sainte-Catherine church, which has a bell tower separate from the principal building, is the largest church made out of wood in France. Following a farewell lunch in a local restaurant, visit Eugène Boudin Museum before returning to Rouen. Evening at leisure. **B L**

Thu 19 May

Depart Rouen

After breakfast depart Rouen for a transfer to Charles de Gaulle Airport, Paris in time for the afternoon Qantas/Emirates flight home.

B



Bernard Ollis 'Rue Lapeyriere Balcony' oil pastel



Wendy Sharpe 'Cafe Musee D'Orsay' (detail) gouache

Tour prices

Per person, twin share	AUD 6,750
Single supplement*	AUD 2,250
Deposit per person	AUD 500
Final payment due	08 March 2016

*Single travellers may request to share. Please advise at time of booking.

Tour code

AG1606

Fitness level

Moderate

Please see booking conditions for fitness level definitions.

Suggested airline

Qantas/Emirates

Please contact Renaissance Tours for current airfares and flight reservations.

Tour price includes

- Accommodation in centrally located four star hotels with daily breakfast **(B)**
- Meals as per itinerary (**L**=Lunch, **D**=Dinner)
Wine with meals
- Transfers and sightseeing with local guides, including entrance fees as per itinerary, in comfortable air-conditioned coaches
- Lectures and talks with your tour leader throughout
- Gratuities for local guides and drivers
- Hotel portorage (one piece per person)

Tour price does not include

- International airfares
- Items of a personal nature, including telephone, laundry, room service etc.
- Travel insurance
- Airport portorage

Your hotels★★★★

Paris – Hotel Royal Saint-Honoré

Rouen – Hotel de Bourgtheroulde

NB. Hotels of a similar standard may be substituted



Spring gardens of Giverny

Terms & Conditions

HOW TO BOOK

Complete, sign and return the Booking Form available from Renaissance Tours with your deposit and page one of your passport.

DEPOSIT / FINAL PAYMENTS

Your deposit is due at the time of booking and is used to pay hotel, airline, performance tickets and/or other deposits. It is non-refundable in the event of your cancellation.

Final payment is due 60 days before departure. Failure to make the final payment by the due date may result in cancellation of your booking and loss of deposit.

Payment by cash, cheque, direct deposit, American Express, MasterCard and Visa is accepted. 1.5% service charge applies to payment made by MasterCard and Visa. 3% service charge applies to payment made by American Express.

Payments for some international airfares can be made by credit card without a service fee. Please check for details.

CANCELLATION & REFUNDS

a) Cancellation by You – Cancellation charges will be applied as shown below, calculated from the day written notification is received by Renaissance Tours. In addition to cancellation fees for tours operated by Renaissance Tours as shown below, airlines, hotels and other third parties may impose up to 100% cancellation charges.

60 days or more	Forfeit of deposit
59 – 45 days	25% of tour cost
44 – 31 days	50% of tour cost
30 – 15 days	75% of tour cost
Less than 15 days	100% of tour cost

The above cancellation charges include applicable GST.

In addition to the above, cancellation charges may apply for additional arrangements booked by Renaissance Tours, such as air tickets, hotels and travel insurance premium. If the reason for cancellation is covered by the insurance policy, you may be able to reclaim these charges.

b) Cancellation by Us – We reserve the right to cancel a tour for any reason (such as failure to reach minimum tour participant numbers). Except for

force majeure, we will not cancel a tour less than 60 days before departure. No further compensation will be paid in the event of cancellation by Renaissance Tours. A full refund of monies paid for tour costs will be the full extent of our liability.

Cancellation and/or amendment fees may apply for additional travel arrangements booked by Renaissance Tours.

PASSPORTS, VISAS AND VACCINATIONS

All travellers must be in a possession of a valid passport – most countries require a 6-month validity from your date of entry or exit. For some countries (e.g. China, Vietnam, India, Russia), visas are included in the tour cost and will be arranged by Renaissance Tours prior to travel. For other countries, it is your responsibility to ensure you have the appropriate visa(s).

You are also responsible for obtaining all necessary inoculations and preventative medicines as may be required for the duration of the tour.

TOUR PRICES

Prices quoted in our tour information are based on exchange rates, cost of services and applicable taxes at the time of publication. Prices may be subject to change in the event of significant currency fluctuations or the introduction of new taxes, up until final payment is received.

In the event of a price increase, whether because of a currency fluctuation, increase in taxes or a correction in advertised prices, we will advise you and you have the option of accepting the amended prices, inclusions and booking conditions or withdrawing from the tour and receiving a full refund of all monies paid.

Once final payment is received, all prices will be guaranteed and no surcharges will apply.

TRAVEL INSURANCE

It is a condition of travel that you are covered by comprehensive travel insurance for international tours. Your travel insurance can be arranged by Renaissance Tours.

FITNESS AND PARTICIPATION

Most of our tours require a MODERATE level of fitness.

However, in certain destinations (e.g. Silk Road, Central Asia, Outback Australia, tropical destinations) or in certain seasons (e.g. mid-winter, mid-summer) or because of the nature of travel (e.g. remote rail), certain tours will require an ABOVE AVERAGE or CHALLENGING level of fitness.

If you (or we) have any doubts about your level of fitness, you may be required to have a doctor's appraisal. This would require your doctor to read the itinerary of your chosen tour, including the fitness level, and provide you (and us) with a written confirmation of your ability to participate.

MODERATE

For the overall benefit of the group, all tour members must possess a moderate level of mobility, including the ability to:

- negotiate airports and railway stations without wheelchair assistance
- use combined shower/bath facilities (it is impossible to guarantee walk-in shower facilities)
- undertake walking tour of 1–2 hours duration, including using stairs, walking over cobblestones and other uneven surfaces
- stand for long periods in museums and other sites
- embark / disembark coaches, trains and other methods of transportation without assistance
- handle your own luggage

ABOVE AVERAGE

In addition to the above, tour members must also be able to:

- undertake walking tours of 2–3 hours
- climb staircases of 100 or more steps

CHALLENGING

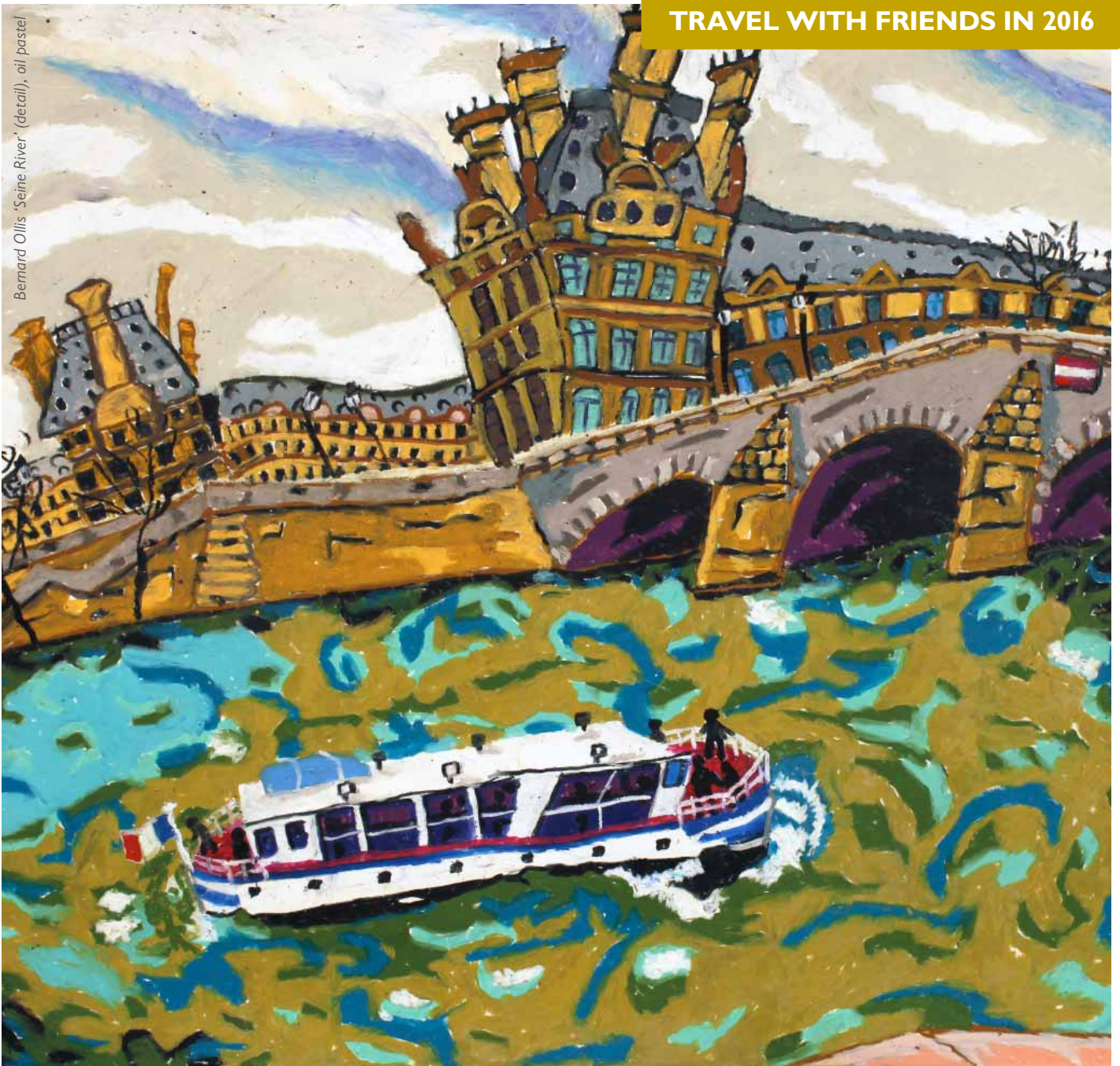
In addition to the above, tour members must also be able to:

- handle extremes of temperature (e.g. below 0 or above 35 degrees)
- handle extremes of altitudes (e.g. 4000 metres and above).

You can find the full terms & conditions at www.renaissance-tours.com.au/booking-conditions or we would be happy to post you a copy on request.



Bernard Ollis 'Seine River' (detail), oil pastel



Renaissance Tours

1300 727 095 (AU)

0800 403 621 (NZ)

call (+61 2) 9299 5801

fax (+61 2) 9299 5805

email info@renaissancetours.com.au

visit www.renaissancetours.com.au

Level 4, 47 York Street, Sydney NSW 2000

GPO Box 5068, Sydney NSW 2001

ABN 14 069 591 448

Travel agent