



LEXILE FRAMEWORK FOR READING

PART 1: INTRODUCTION TO THE LEXILE FRAMEWORK® FOR READING

FOR PARTNERS

3

About This Toolkit

5

Lexile Framework Overview

8

Benefits of Lexile Measures

14

Contact Your Team

WHAT'S INSIDE

An introductory message and outline of the Implementation & Communications Toolkit.

Read an overview of the Lexile Framework for Reading.

Learn about the benefits and resources that accompany Lexile measures.

Meet your Lexile support team.

PARTNER TOOLKIT

Welcome to *Part 1: Introduction to the Lexile Framework* of the Implementation and Communications Toolkit. To view the toolkit in its entirety, visit Lexile.global/toolkit.

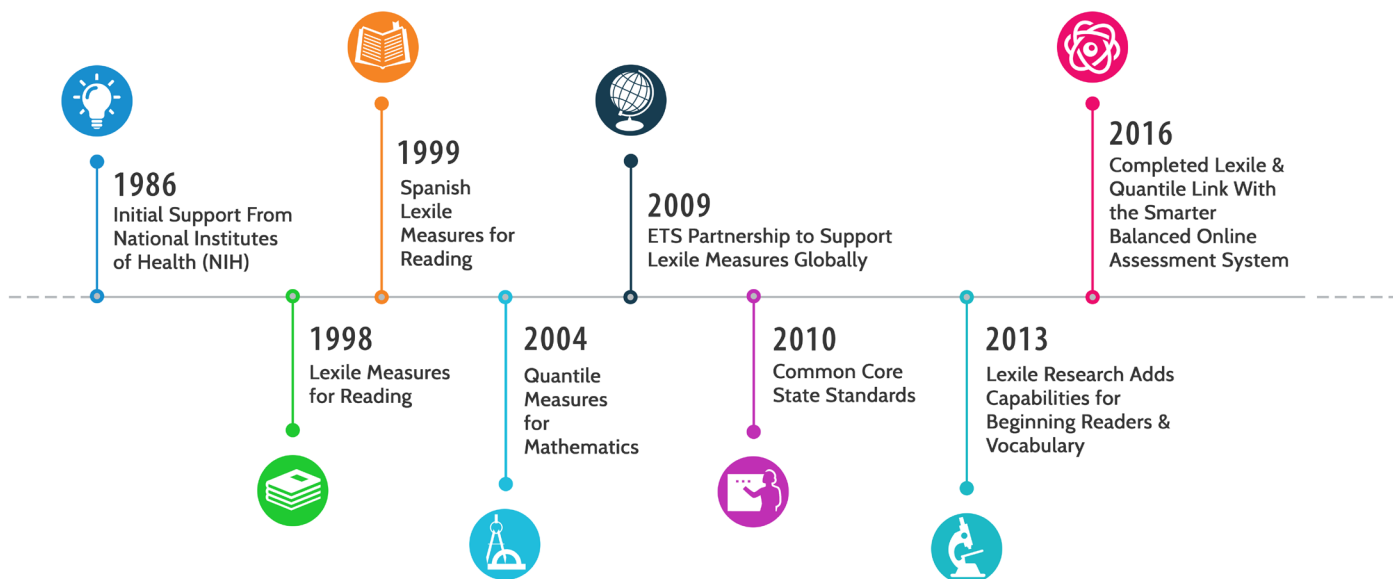
About This Toolkit

As part of the MetaMetrics® family, we are grateful for your partnership. We have a rich history of more than 30 years of partnering with assessment and digital learning developers to help connect test scores with learning. Collaborations between MetaMetrics and assessment developers and education companies have inspired and produced some of the best education products in the industry. As your partner, we promise to provide the support you need to implement the Lexile Framework for Reading.

You are among a growing number of assessment and education organizations using Lexile measures, a proven, scientific tool. A Lexile measure is more than a standalone scale score. It is a tool that points to targeted content and an indicator for a learner's next steps in reading. Lexile measures provide connection to real world benchmarks. Over 100 million books, articles and websites in 180 countries have Lexile text measures and more textbooks, trade books, educational series and other reading content is measured and added to the Framework each day.

The accuracy and flexibility of the Lexile Framework makes it a stigma free way to communicate reading achievements and goals with learners of all abilities and backgrounds including parents, employers and educators. Our research team continues to study English reading materials for learners around the world – from first language learners in the United States and the United Kingdom to English as a foreign language learners in Japan, China and the Republic of Korea.

HISTORY & MILESTONES



MetaMetrics' history is based on a vision of making test scores actionable by connecting assessments with instruction. Hundreds of independent research studies on Lexile measures validate the metrics.

About This Toolkit

We are offering this toolkit ([Lexile.global/toolkit](https://lexile.global/toolkit)) so that you and your staff will get the full benefit of the Lexile Framework for Reading and its many resources.

Because the Lexile Framework provides actionable information for test-takers of all ages and abilities and can be used in many settings from high-stakes assessments to digital reading products, some of the information in this toolkit may not be applicable to your organisation's product.

The toolkit is organized as follows:

PART 1 **INTRODUCTION** **TO THE LEXILE** **FRAMEWORK FOR** **READING**

This section provides an overview of the Lexile Framework for Reading.

PART 2 **GETTING STARTED**

Consider the steps your company needs to take to report Lexile measures for your customers and learn answers to frequently asked questions.

PART 3 **COMMUNICATING TO** **YOUR CUSTOMERS**

Use these resources including templates, graphics, logos and other collaterals to help with key messages, initial announcements and outreach.

This is Part 1 of the Implementation and Communications Toolkit. To access Part 2 and Part 3, please visit the [Lexile.global/toolkit](https://lexile.global/toolkit).

What Is the Lexile Framework?

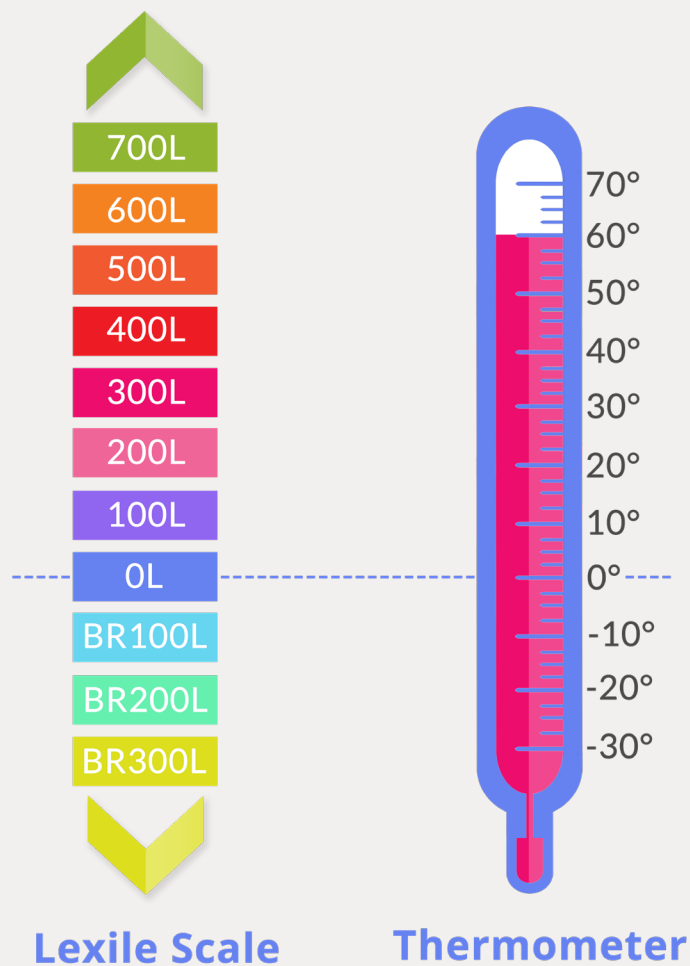
There are two kinds of Lexile measures that make up the Lexile Framework for Reading: the **Lexile learner measure** and the **Lexile text measure**.

Learners receive a Lexile learner measure as a score from a reading comprehension test that uses the Lexile scale. The score describes the learner's ability to read English. Books and other texts receive a Lexile text measure from a software program that analyses text difficulty.

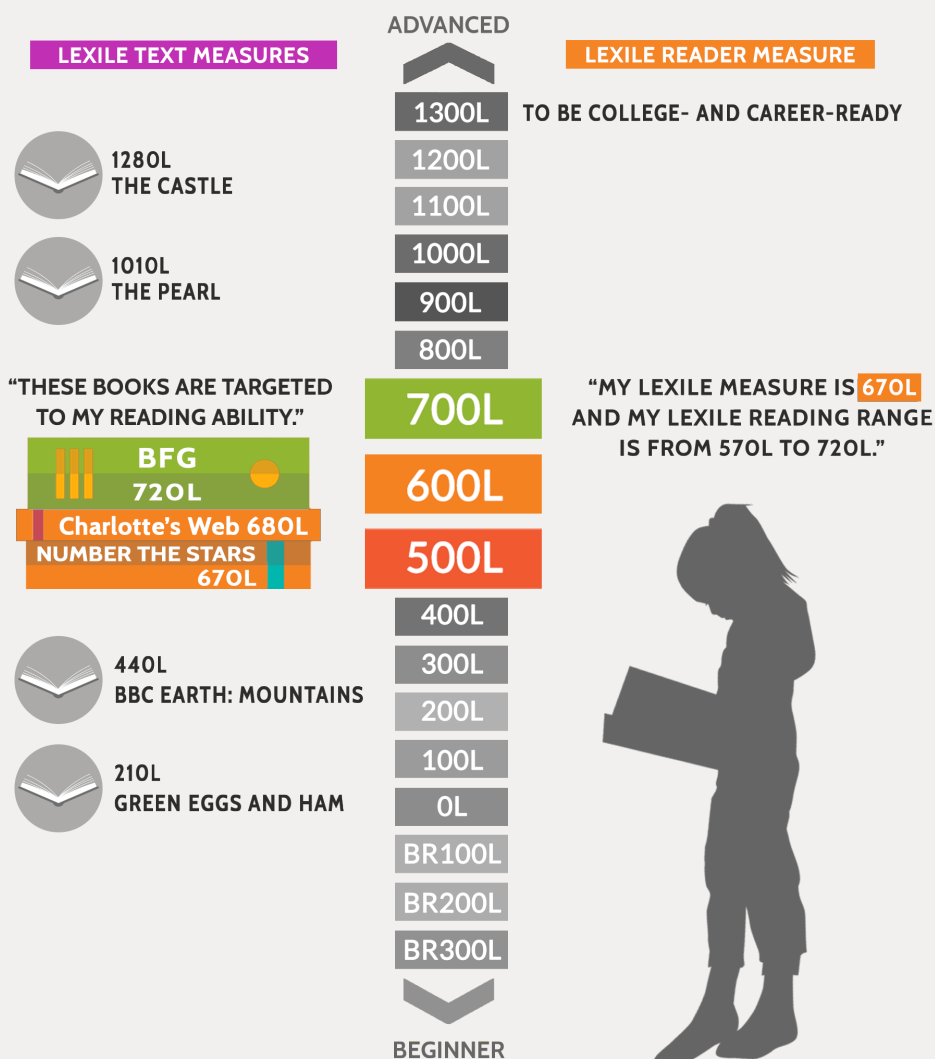
LEXILE SCALE

Advanced level learners and advanced level texts have higher measures. Beginner level learners and texts have lower measures. With this Framework, both learner and text are placed on the same measurement scale. Learners can be matched with reading materials more precisely than grade or age indicators allow.

Beginning Reader (BR) is a code given to learners and texts that have measures below OL on the Lexile scale. A Lexile measure of BR100L indicates that the Lexile measure is 100 units below OL. Just like -10 degrees is higher (warmer) than -30 degrees on a thermometer, a BR100L book is more complex than a BR300L book. The higher the number after the BR code, the less complex the text.



Lexile learner and text measures appear as a number followed by an “L”. For example, “850L” on a score report would indicate that the learner has an 850 Lexile measure from an assessment of reading comprehension. Since Lexile measures are independent of any one test, publisher or instructional programme, multiple reading assessments can measure and report a learner’s reading performance as a Lexile measure.



This learner’s Lexile measure is 670L. A learner with a measure of 670L who is given a text measured at 670L is expected to have a 75 percent comprehension rate, the “default” rate used for reading instruction within the Lexile Framework. When a text’s measure matches a learner’s measure, the learner should not be frustrated by losing the meaning-thread of the text, but should encounter new vocabulary and sentence structures that promote growth in reading.

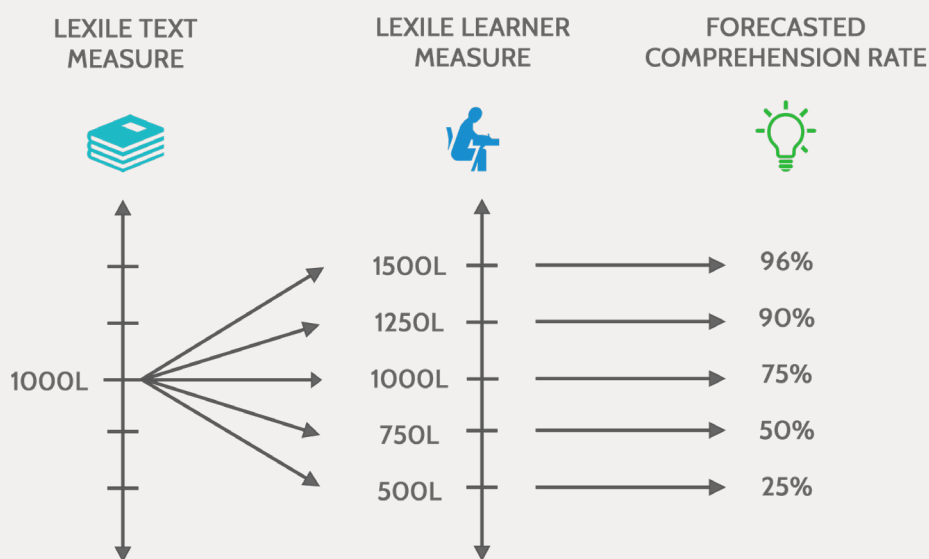
The ideal reading range to encourage growth for a learner is from 100L below to 50L above the learner’s Lexile measure. In this case, the learner’s ideal reading range is from 570L to 720L.

Lexile Learner Measures

A Lexile learner measure is the numeric representation of a learner's ability to read English. The Lexile scale is a developmental scale ranging from beginning learner measures below OL to above 1600L for advanced abilities. The higher the learner's Lexile measure, the greater their ability to read English. More than 35 million learners from 180 countries around the world have received a Lexile measure.

Lexile Text Measures

A Lexile text measure is the numeric representation of a text's difficulty. Like the Lexile learner measures, the higher the Lexile text measure, the more difficult the text is to comprehend. The Lexile scale is a developmental scale ranging from beginning learner texts below OL to above 1600L for advanced text. Currently, over 300,000 books through publishers, online booksellers and education programmes, and over 100 million websites and online books and articles have Lexile text measures.



Lexile text measures can be used to make more informed instructional decisions. Connecting learners with materials in their Lexile range helps to differentiate instruction. For example, when all students in a classroom are using the same text, Lexile text measures help predict which students might need extra help and which ones might need enrichment.

When a text's measure matches a learner's measure, the learner is expected to have a 75 percent comprehension rate.



BENEFITS OF USING LEXILE MEASURES

Today, Lexile measures are recognized as the most widely used reading metric. Lexile measures provide learners of all ages with a way to monitor their progress toward learning standards and goals. Lexile measures connect tens of millions of learners to more than 100 million articles and books at the right level of challenge through extensive partnerships in government, publishing technology and research.

The Lexile Framework for Reading's appeal is that it is a universal, objective standard for English reading. Based on scientific, quantitative dimensions, the Framework is instrument-independent, not proprietary to one assessment or publisher.

Lexile Measures Are:

- √ A means of providing a benchmark against real-world texts used by universities, the workplace and media outlets across the globe.
- √ A tool that can be used to inform individualized instruction and set learning goals.
- √ Complementary to other book levelling systems based on criteria that require qualitative judgments for guided reading.
- √ Complementary to qualitative schemes, like the Common European Framework of Reference for Languages (CEFR).
- √ For native English language speakers and English language learners.

Lexile Measures Do Not:

- ✗ Measure the complexity of the narrative or storyline of a text.
- ✗ Measure the appropriateness of text content considering the person's age, background, motivation or topical interest level.
- ✗ Provide an instructional programme.
- ✗ Measure text support such as support provided by accompanying pictures and pull-outs.
- ✗ Measure text quality. (For instance, a Lexile text measure does not address, "Is it a good book?")
- ✗ Provide reading context and purpose.

Learners Receive Lexile Measures Through:

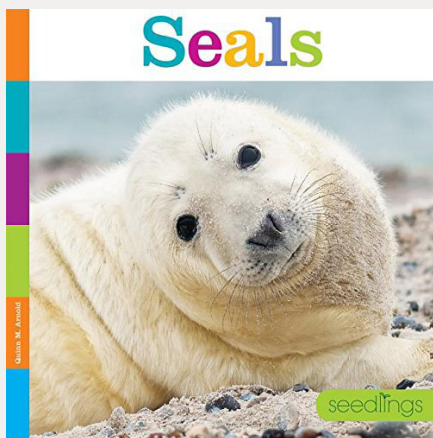
- ➔ High stakes education assessments
- ➔ Progress monitoring tests
- ➔ Integrated digital programs
- ➔ University language exams
- ➔ Workplace language exams
- ➔ Language institutes



Example Text Passages

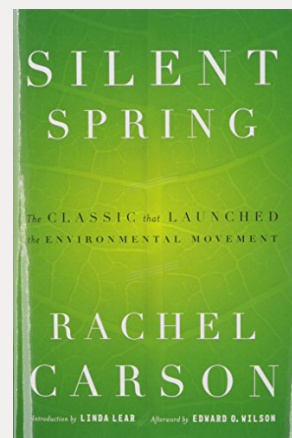
The Lexile scale is a developmental scale ranging from beginning reader measures below OL to above 1600L for advanced text and abilities. Below are two passages on different ends of the Lexile scale. The passage to the left is easier to read and so has a corresponding Lexile text measure that is much lower than the more complex text to the right. The Lexile scale can be used to match a learner with real-world reading materials that have appropriate Lexile text measures.

330L EXAMPLE TEXT



Earless seals live in oceans. Thick blubber keeps seals warm. A seal's back flippers help it swim fast. A seal on land is low. Its claws dig into rocks and ice. Many seals have dark brown or gray fur. Some have spots. Seals molt every year.

1340L EXAMPLE TEXT



The basic element, carbon, is one whose atoms have an almost infinite capacity for uniting with each other in chains and rings and various other configurations, and for becoming linked with atoms of other substances. Indeed, the incredible diversity of living creatures from bacteria to the great blue whale is largely due to this capacity of carbon. The complex protein molecule has the carbon atom as its basis, as have molecules of fat, carbohydrates, enzymes, and vitamins. So, too, have enormous numbers of nonliving things, for carbon is not necessarily a symbol of life.

The Power of Lexile Measures

As the use of Lexile measures grows around the world, assessment companies, publishers, leaders in education technology and governments rely on Lexile measures to create meaningful reading assessments and targeted learning products. Content publishers — including tradebook, textbook and school library publishers, catalog automation service providers, periodical database service providers, book sellers and distributors — provide Lexile measures for their texts used in classrooms, at home and in the library.

“MetaMetrics had superior leveling. Lexiles are more of a universal measure than the others we looked at. Teachers and students understand how to comprehend the scores better.”

– Sue Adelman, Follett Vice President of Market Intelligence

Top educational test publishers are partnering with MetaMetrics to develop assessments or to link to existing assessments to report students' reading scores as Lexile learner measures.

The use of Lexile measures:

- ➔ Connects English language readers of all ages and abilities with text at the right challenge level to aid in reading comprehension and build reading skills.
- ➔ Allows educators, parents and students to monitor progress toward university- and career-readiness.
- ➔ Provides a scientifically valid tool for measuring student growth from year to year and across assessment systems.
- ➔ Acts as a compass to help educators and learners navigate the path of reading success.
- ➔ Enables educators to differentiate instruction for at-risk students as well as proficient readers.
- ➔ Applies to actual reading materials including primary reading texts, primary/secondary textbooks, university and career materials rather than reporting a scale score separated from real world context.
- ➔ Indicates the learner's overall reading comprehension of text, not just fluency and vocabulary knowledge.



MATCHING READERS WITH TEXTS

To realize the value of Lexile measures, consider the following scenario.

A parent takes her child to the store to buy shoes. The salesperson asks her, “What kind of shoes do you need?” The parent replies, “He needs sneakers.” As the salesperson leads them to the sneakers, he asks, “How old is your child?” The parent answers, “12.” The salesperson then points to 10 pairs of sneakers on the wall and says, “Here are our age-12 sneakers.”

Not likely, right? We don’t buy shoes by age; we buy them by size. Twelve-year-olds vary a great deal by foot size. Similarly, their reading ability varies a great deal. For years, students have been matched to books and other learning materials based on age or grade level.

As with shoe shopping, it’s important to recognize that **one size does not fit all** and ensure that each learner is matched with the right educational material “fit” for them and resources that can accelerate learning for them.



FIND A BOOK

Find “just right” books at fab.lexile.global.

Lexile measures offer a scale of English language reading ability that can be tracked across multiple assessments throughout a learner's journey. Research indicates that to be university- and career-ready, students should strive to be able to read materials around 1300L.

Oftentimes, there is a gap between the reading challenge level expected in secondary school and reading demands confronted in post-secondary school life in university textbooks and newspapers. Once a learner has their Lexile reading measure, they can use it to set goals and track growth in their ability to read English and plan to meet the reading demands of universities and the global workplace. Lexile measures can be used to see if a learner is on the path to being equipped with English reading abilities needed as a citizen, employee or university student and to close learning gaps.

U.S. LEARNER MEASURES, MID-YEAR

GRADE	READER MEASURES, MID-YEAR 25th percentile to 75th percentile (IQR)
1	BR120L to 295L
2	170L to 545L
3	415L to 760L
4	635L to 950L
5	770L to 1080L
6	855L to 1165L
7	925L to 1235L
8	985L to 1295L
9	1040L to 1350L
10	1085L to 1400L
11 & 12	1130L to 1440L

There is no direct correspondence between a year level in formal education or an age when a learner's reading ability relates to specific Lexile text level demands. However, the chart to the left offers a sense of how a learner's Lexile measure (reading ability) compares to Lexile measures for students in the same year (mid-year) of formal education.

The Lexile range shown is the middle 50 percent of U.S. student measures for each year meaning that 25 percent of the students were reading higher and 25 percent of the students were reading lower than these ranges.

Within a classroom there will be a range of learner abilities as well as differences for English as a second language learners.

MEET YOUR LEXILE SUPPORT TEAM

Our team of experienced educators and researchers are here to help.

Our team at MetaMetrics shares your vision for each learner being ready to meet English reading demands in university and career life. As partners in that work, we are here to support your efforts in understanding and using the Lexile Framework to help meet your goals.

Two of our MetaMetrics team members will serve as your primary support team. Please reach out to them with any questions and feedback you have.



JASON TURNER
VICE PRESIDENT
GLOBAL SERVICES
jturner@lexile.com



KANISTA ZUNIGA
DIRECTOR OF BUSINESS
DEVELOPMENT
GLOBAL SERVICES
kzuniga@lexile.com



See something missing or want to help us make this toolkit better? Please send us an email!



MetaMetrics®

Find Us Online

LEXILE.GLOBAL