



2000 - 2006 TOYOTA TUNDRA

PART # 97004BK SHOWN

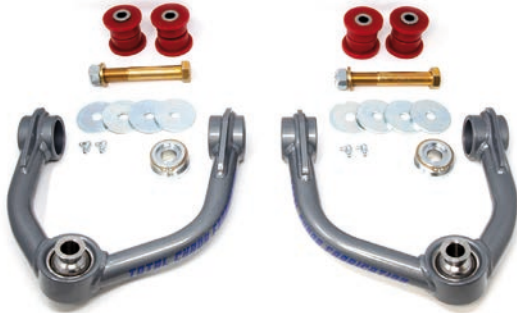
BUILT FOR TRAVEL

UCA & LONG TRAVEL SUSPENSION
SALES GUIDE

STOCK LENGTH UPPER CONTROL ARMS

2000 - 2006 TOYOTA TUNDRA

PART # 97500



Kit Includes

- UPPER A-ARMS W/ BUSHINGS
- PLATED END WASHERS
- 1" UNIBALLS W/ RETAINING CLIPS
- GRADE 8 HARDWARE
- GREASE FITTINGS
- TAPERED SPINDLE ADAPTERS

Features and Benefits

- 4130 chromoly tubular upper control arms are 100% bolt on and hand crafted in the U.S.A.
- CNC machined slug adapters press into the spindle and convert the factory ball joint to a 1" uniball for added component strength & maximum wheel travel.
- TOTAL CHAOS includes 1" I.D. uniballs that feature a heat treated stainless steel ball & heat treated stainless steel race for maximum corrosion resistance and component longevity. These uniball's also features a military grade PTFE woven fabric liner that helps prevent noise.
- Custom profile upper and lower hi-misalignment spacers maximize droop wheel travel and are machined from heat treated 17-4 stainless steel. The lower hi-misalignment spacer registers into the slug adapter for maximum strength.
- Upper control arms combined with extended length coil over shocks will allow for up to 1" of additional wheel travel.
- Urethane bushings reduce bushing deflection compared to stock rubber bushings.
- Control arm pivots include zerk fittings to grease the urethane bushings & inner sleeves without disassembly.
- 3 stage powder coat process includes a durable clear coat to provide a long lasting finish.
- Complete grade 8 hardware kit is included.
- *Not compatible with lift kits from Tuff Country.

MSRP

\$ 905⁵⁷

Bolt On

Travel	Lift	Track Increase
1" additional	2-3"	0"



INSTALLATION INSTRUCTIONS



ADDITIONAL PRODUCT INFO & IMAGES

Recommended Tire & Wheel Combination

Tire	Wheel	Backspace
285/75/R16	16 x 8	4.5"

Recommended Primary Shock Setup

2.5" Diameter Extended Travel Coilover Shocks

Shock Manufacturer	Part #
Fox Shocks	880-02-420
King Shocks	25001-138 EXT

SUPPORT - (951) 737 9682

100% MADE IN THE USA

TOYOTA TUNDRA STOCK LENGTH ACCESSORIES

ACCESSORIES SPECIFIC TO PART #97500

FRONT

KING 2.5" EXTENDED TRAVEL COILOVERS W/ COMPRESSION KNOBS



- Adjustable ride height ranging from 2"-3" of lift.
- 1" extra droop wheel travel when combined with 97500 upper control arms.
- All necessary mounting brackets and hardware are included along with detailed instructions.

MSRP **\$1,299⁰⁰**

Part # KING-25001-138-EXT



POLYURETHANE STEERING RACK BUSHING KIT



- Eliminates the rack movement caused by worn out rubber bushings.
- 100% bolt on.
- Replaces all 3 factory rubber bushings.
- Includes inner sleeves.

MSRP **\$45⁹⁴**

Part # 97701

SPINDLE GUSSET



- Must have reinforcement for anyone who wants to run hard in the dirt!
- Strengthens spindle uprights and prevents the knuckle from damage during hard impacts under braking.
- 1/8" prebent laser cut mild steel brackets.
- Eliminates the factory sway bar.
- Welding and grinding are required to install.

MSRP **\$49⁵⁰**

Part # 59697

1" DIFF. DROP SPACER KIT



- Tired of tearing inner CV boots when aftermarket lift kits have been installed?
- Reduces inner CV angle by 2-3 degrees.
- Reduces friction wear and tear on stock length axle inner CV boots with auto locking hubs.

MSRP **\$51¹⁵**

Part # 96200

COIL BUCKET TOWER GUSSETS



- Reduces upper coil bucket flex and double shears factory upper control arm bolt.
- Compatible only with TC UCA's or L/T kits - not intended for use with factory control arms.
- Welding and grinding are required to install.

MSRP **\$119⁸¹**

Part # 59652

SECONDARY SHOCK HOOP KIT



- Maximize vehicle dampening control when you install a dual 2.5" shock mount system.
- 4130 prebent chromoly shock hoops are designed to install secondary 2.5" smooth body or bypass shocks for maximum IFS dampening control.
- Kit includes weld-on lower shock mounts for factory lower control arms.
- Reinforces the factory coil bucket and helps reduce flex.
- Upper shock tabs are tacked in place to aid in secondary shock location set up.
- Includes Grade 8 hardware.
- Welding and grinding are required to install.

MSRP **\$515¹²**

Part # 97702
[FOX/KING]

KING 2.5" EXTERNAL BYPASS SECONDARY SHOCKS



- Designed for use with TC secondary shock hoops (PN: 97702).
- Externally adjustable compression and rebound tubes.
- 2.5" diameter with piggyback reservoirs.

MSRP **\$1,357⁰⁰**

Part # KING-PR2506-BP2P

TOYOTA TUNDRA STOCK LENGTH ACCESSORIES

ACCESSORIES SPECIFIC TO PART #97500

REAR

REAR LOWERING SHACKLE



- Lowers rear suspension 3/4" & improves handling.
- Required when doing a under axle leaf spring conversion.
- For use with stock or after market leaf springs.
- Includes urethane bushings and inner sleeves.
- 100% bolt on.
- Reuses factory hardware.

MSRP **\$ 265⁰⁰**

Part # 49702



PREP

1" STAINLESS STEEL FK UNIBALL AND SNAP RING REPLACEMENT KIT



- 1" I.D. uniballs feature a heat treated stainless steel ball & heat treated stainless steel race for maximum corrosion resistance and component longevity.
- Performance parts will require periodic maintenance based on your driving habits & local conditions.
- Uniballs include a military grade PTFE woven fabric liner that helps prevent noise.
- Snap rings included.
- Sold as a pair.

MSRP **\$ 198³⁸**

Part # FK-REP KIT

1" UNIBALL REMOVAL / INSTALL TOOL



- Aids in the removal and reinstallation of a 1" uniball from any uniball cup during vehicle prep.
- Designed to be used with any hydraulic press, shop press or hammer.
- Prevents damage to new uniball during reassembly.

MSRP **\$ 46³⁰**

Part # 96006

URETHANE BUSHING KIT: UPPER CONTROL ARMS



- Complete TC upper control arm urethane replacement bushing kit.
- Performance parts will require periodic maintenance based on your driving habits & local conditions.
- Inspect bushings and other equipment regularly.
- Contact our facility direct to order these items.

MSRP **\$ 66²²**

Part # 69000

SUPPORT - (951) 737 9682

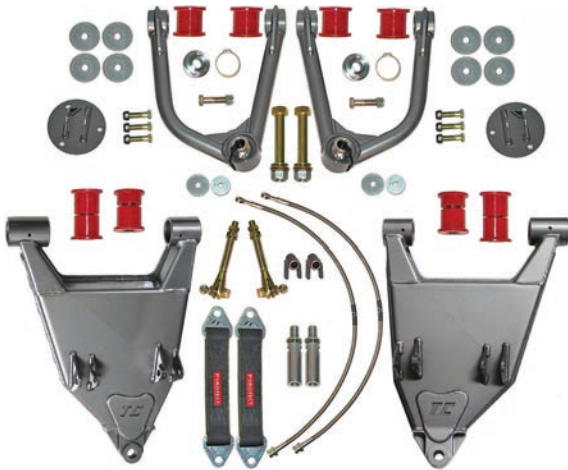
100% MADE IN THE USA

3.5" LONG TRAVEL SYSTEM

2000 - 2003 TOYOTA TUNDRA 2WD / 4WD



PART #97000BK [KING/FOX]



MSRP **\$ 3,557³⁹**

Travel	Lift	Track Increase
13"	3-4"	7"



INSTALLATION INSTRUCTIONS



ADDITIONAL PRODUCT INFO & IMAGES

Kit Includes

- UPPER A-ARMS W/ BUSHINGS & ZERK FITTINGS
- LOWER A-ARMS W/ BUSHINGS
- TIE-ROD EXTENSIONS
- PLATED A-ARM END WASHERS
- D.O.T. BRAIDED BRAKE LINES
- 1" UNIBALLS W/ RETAINING CLIPS
- BOLT-ON UPPER SHOCK MOUNTS
- LIMIT STRAPS W/ ADJUSTERS & MOUNTS
- GRADE 8 HARDWARE
- HI-MISALIGNMENT SPACERS

Features and Benefits

- 3.5" extended upper and lower control arms bolt to factory mounting locations. Fiberglass fenders are required. 13" Travel.
- Upper ball joints are upgraded to 1" stainless steel uniballs for max travel and component strength.
- Boxed lower control arms include dual 2.5" shock tabs.
- Primary coil over shocks bolt into the factory coil bucket location.
- Several spring rate options allow the ability to customize your ride for your specific application.
- Maximize tune ability, overall articulation & performance.
- TC 4340 custom extended axles reuse factory inner and outer CV's to retain 4wd (axles are sold separately and not included with the kit).

Recommended Tire & Wheel Combination

Tire	Wheel	Backspace
285/70/R17	17 x 8.5	4.75"

Recommended Primary Shock Setup

2.5" Diameter Extended Travel Coilover Shocks

Shock Manufacturer	Part #
Fox Shocks	883-02-065
King Shocks	TCS151-03-700

Recommended Secondary Shock Setup

2.5" External Bypass Shocks

Shock Manufacturer	Part #
Fox Shocks	982-02-954
King Shocks	TC-1151-34

Note: TC Hoop Part # 96601 [FOX/KING] is required

Required Additional Parts for Installation

Part	Part #
Coilover Shocks	
TC Extended Axles (4WD MODELS)	97300

Application Notes

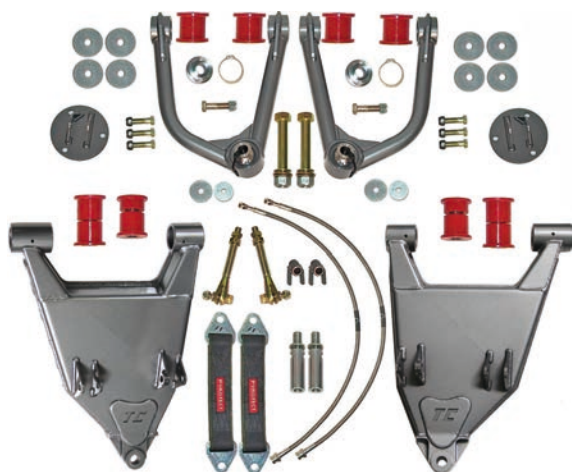
- Suspension travel varies on every vehicle. Welding is required to mount the limit strap mounts and bump stop spacer.
- This kit was not intended to use air bumps.

3.5" LONG TRAVEL SYSTEM

2004 - 2006 TOYOTA TUNDRA 2WD / 4WD



PART #97004BK [KING/FOX]



MSRP **\$ 3,557³⁹**

Travel	Lift	Track Increase
13"	3-4"	7"

INSTALLATION INSTRUCTIONS

ADDITIONAL PRODUCT INFO & IMAGES

Kit Includes

- UPPER A-ARMS W/ BUSHINGS & ZERK FITTINGS
- LOWER A-ARMS W/ BUSHINGS
- TIE-ROD EXTENSIONS
- PLATED A-ARM END WASHERS
- D.O.T. BRAIDED BRAKE LINES
- 1" UNIBALLS W/ RETAINING CLIPS
- BOLT-ON UPPER SHOCK MOUNTS
- LIMIT STRAPS W/ ADJUSTERS & MOUNTS
- GRADE 8 HARDWARE
- HI-MISALIGNMENT SPACERS

Features and Benefits

- 3.5" extended upper and lower control arms bolt to factory mounting locations. Fiberglass fenders are required. 13" Travel.
- Upper ball joints are upgraded to 1" stainless steel uniballs for max travel and component strength.
- Boxed lower control arms include dual 2.5" shock tabs.
- Primary coil over shocks bolt into the factory coil bucket location.
- Several spring rate options allow the ability to customize your ride for your specific application.
- Maximize tune ability, overall articulation & performance.
- TC 4340 custom extended axles reuse factory inner and outer CV's to retain 4wd (axles are sold separately and not included with the kit).

Recommended Tire & Wheel Combination

Tire	Wheel	Backspace
285/70/R17	17 x 8.5	4.75"

Recommended Primary Shock Setup

2.5" Diameter Extended Travel Coilover Shocks

Shock Manufacturer	Part #
Fox Shocks	883-02-065
King Shocks	TC5151-03-700

Recommended Secondary Shock Setup

2.5" External Bypass Shocks

Shock Manufacturer	Part #
Fox Shocks	982-02-954
King Shocks	TC-1151-34

Note: TC Hoop Part # 96601 [FOX/KING] is required

Required Additional Parts for Installation

Part	Part #
Coilover Shocks	
TC Extended Axles (4WD MODELS)	97300

Application Notes

- Suspension travel varies on every vehicle. Welding is required to mount the limit strap mounts and bump stop spacer.
- This kit was not intended to use air bumps.

SUPPORT - (951) 737 9682

100% MADE IN THE USA

TOYOTA TUNDRA ACCESSORIES FOR 3.5" KITS

ACCESSORIES SPECIFIC TO PART #97000BK & #97004BK

FRONT



KING LONG TRAVEL COILOVERS



- Long travel specific shocks add 3-4" of lift when paired with a TC long travel kit.
- 2.5" diameter shocks with remote reservoirs for optimum cooling.

MSRP \$ 1,550⁰⁰

Part # KNG-TC5151-03-700



WELD - ON SPINDLE GUSSETS



- Must have reinforcement for anyone who wants to run hard in the dirt!
- Strengthens spindle uprights and prevents the knuckle from damage during hard impacts under braking.
- 1/8" prebent laser cut mild steel brackets.
- Eliminates the factory sway bar.
- Welding and grinding are required to install.

MSRP \$ 49⁵⁰

Part # 59697



WELD - ON UPPER COIL BUCKET TOWER GUSSETS



- Reduces upper coil bucket flex and double shears factory upper control arm bolt.
- Compatible only with TC UCA's or L/T kits, not intended for use with factory control arms.
- Welding and grinding are required to install.

MSRP \$ 119⁸¹

Part # 59652



DUAL SHOCK HOOPS - LONG TRAVEL ARMS



- Maximize vehicle dampening control when you install a dual 2.5" shock mount system.
- 4130 prebent chromoly shock hoops are designed to install secondary 2.5" smooth body or bypass shocks for maximum IFS dampening control.
- Reinforces the factory coil bucket and helps reduce flex.
- Upper shock tabs are tacked in place to aid in secondary shock location set up.
- Includes grade 8 hardware.
- Welding and grinding are required to install.

MSRP \$ 475²⁹

Part # 96601 [FOX/KING]



KING LONG TRAVEL SECONDARY SHOCKS



- Serious levels of performance are achieved when a secondary shock is used with a TC long travel kit.
- Externally adjustable for both compression and rebound.
- Designed for use with TC secondary shock hoops (PN: 99601).

MSRP \$ 1,650⁰⁰

Part # KNG-TC1151-34



LONG TRAVEL HEIM JOINT STEERING UPGRADE



- Maximize wheel travel and component strength while eliminating sloppy steering.
- 4130 zinc plated extended chromoly tie-rods.
- 7/8" 4130 chromoly heim joints replace factory outer tie rod ends.
- Laser cut weld-on double shear steering arm gussets are included.
- Grade 8 hardware and tapered steering arm adapters are supplied.
- Designed to fit TC long travel systems ONLY.

MSRP \$ 605⁷²

Part # 97099



URETHANE STEERING RACK BUSHING KIT



- Eliminates the rack movement caused by worn out rubber bushings.
- 100% bolt on.
- Replaces all 3 factory rubber bushings.

MSRP \$ 39⁹⁴

Part # 97701



15" Brake Lines



- Replacement front brake lines for use with 3.5" long travel kit only.
- Braided stainless steel construction.
- Kit includes mounting clips and copper washers.
- Sold as a pair.

MSRP \$ 133⁷¹

Part # 97330

TOYOTA TUNDRA ACCESSORIES FOR 3.5" KIT

ACCESSORIES SPECIFIC TO PART #97000BK & #97004BK

4WD

LT 4WD MODIFIED AXLES +3.5" EXTENDED



- Designed for use with TC +3.5" long travel systems.
- High angle inner CV boots and clamps are included.
- 4340 heat treated 3.5" extended axle shafts and clamps are included.
- Re-uses factory Toyota inner and outer CV joints.

MSRP **\$764⁰⁵**

Part # 97300

1" DIFF. DROP SPACER KIT



- Tired of tearing inner CV boots when aftermarket lift kits have been installed?
- Reduces inner CV angle by 2-3 degrees.
- Reduces friction wear and tear on stock length axle inner CV boots with auto locking hubs.

MSRP **\$51¹⁵**

Part # 96200

REAR

TUNDRA REAR LOWERING SHACKLES

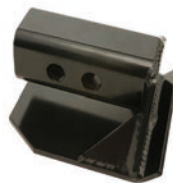


- 100% bolt on.
- Lowers rear suspension 3/4" & improves handling.
- Reuses factory hardware.
- Includes urethane bushings and inner sleeves.
- For use with stock or after market leaf springs.
- Required when doing a under axle leaf spring conversion.

MSRP **\$265⁰⁰**

Part # 49702

TOYOTA HITCH SKID PLATE



- Protects receiver and chain safety tabs from contact damage on the trail.
- Skid plate is designed to prevent hitch hang ups while climbing or ascending in rocks and ditches.
- Universal design fits all OEM Toyota receivers for: 2003+ 4Runner | 2005+ Tacoma | 2007+ Tundra | 2007+ FJ's | 2003+ Lexus GX 470/460
- Features a 3/16" steel skid plate.
- Installs with any hitch pin. (Not Included)
- Powder coated black.

MSRP **\$149⁰⁰**

Part # 48420



TOYOTA TUNDRA ACCESSORIES FOR 3.5" KIT

ACCESSORIES SPECIFIC TO PART #97000BK & #97004BK

PREP

1" STAINLESS STEEL UNIBALL REPLACEMENT KIT



- 1" I.D. uniballs feature a heat treated stainless steel ball & heat treated stainless steel race for maximum corrosion resistance and component longevity. These uniball's also features a military grade PTFE woven fabric liner that helps prevent noise.
- Snap rings included.

MSRP \$198³⁸

Part # FK-REP KIT

LONG TRAVEL URETHANE BUSHING KIT



- Complete TC long travel suspension system replacement urethane bushing kit.
- Performance parts will require periodic maintenance based on your driving habits & local conditions.
- Inspect bushings and other equipment regularly.

MSRP \$140⁰⁰

Part # 69700

ADDITIONAL REPLACEMENT PARTS

- TC stocks all replacement parts necessary to maintain your performance equipment.
- Tie-Rod Extensions
- Plated A-Arm End Washers
- D.O.T. Braided Brake Lines
- Limit Straps w/ Adjusters & Mounts
- Grade 8 Hardware
- Hi-Misalignment Spacers
- **Please have your customers contact TC directly for any individual replacement parts.**

UNIBALL REMOVAL & RE-INSTALLATION TOOL



- Aids in the removal and reinstallation of a 1" uniball from any uniball cup during vehicle prep.
- Designed to be used with any hydraulic press, shop press or a hammer.
- Prevents damage to new uniball during reassembly.

MSRP \$46³⁰

Part # 96006

BALL JOINT REMOVAL-SLUG ADAPTER INSTALL TOOLS



- Aids in the removal of the factory ball joint from the spindle.
- Also designed to assist in the TC slug adapter installation.
- Requires a large C clamp tool or press tool.

MSRP \$46³⁰

Part # 96005