

Part Number: PT347-1M162**Kit Contents**

Item #	Quantity Req'd.	Description
1	1	Convenience Net
2	1	Hardware Bag
3		

Hardware Bag Contents

Item #	Quantity Req'd.	Description
1	2	T-Anchor Assembly
2	2	Nylon Spacers
3	2	Panel Clips

Additional Items Required For Installation

Item #	Quantity Req'd.	Description
1		
2		
3		

Conflicts

--

Recommended Tools

Personal & Vehicle Protection	Notes
None	
Special Tools	Notes
None	
Installation Tools	Notes
Trim Plug Removal Tool	
Special Chemicals	Notes
None	

General Applicability

--

Recommended Sequence of Application







Item #	Accessory

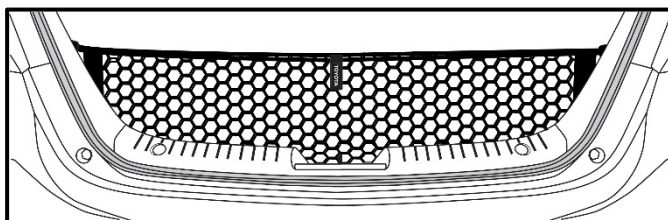
*Mandatory

Vehicle Service Parts (may be required for reassembly)

Item #	Quantity Req'd.	Description

Legend

	STOP: Damage to the vehicle may occur. Do not proceed until process has been complied with.
	OPERATOR SAFETY: Use caution to avoid risk of injury.
	CAUTION: A process that must be carefully observed in order to reduce the risk of damage to the accessory/vehicle and to ensure a quality installation.
	TOOLS & EQUIPMENT: Used in Figures calls out the specific tools and equipment recommended for this process.
	REVISION MARK: This mark highlights a change in installation with respect to previous issue.
	SAFETY TORQUE: This mark indicates that torque is related to safety.



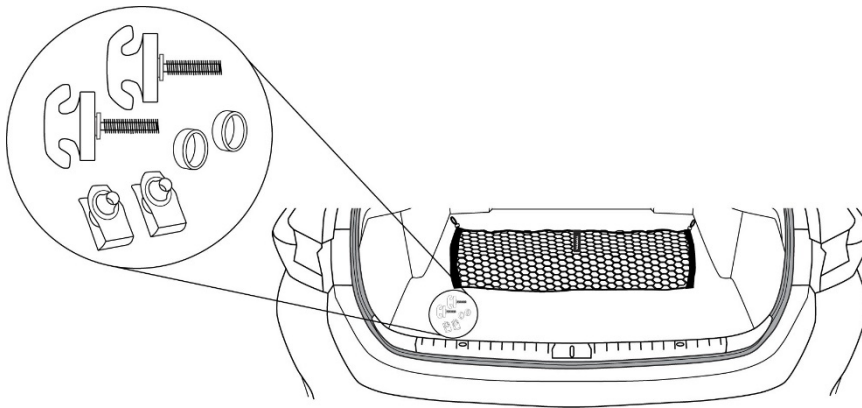
Care must be taken when installing this accessory to ensure damage does not occur to the vehicle. The installation of this accessory should follow approved guidelines to ensure a quality installation.

These guidelines can be found in the "Accessory Installation Practices" document.

This document covers such items as:-


- Vehicle Protection (use of covers and blankets, cleaning chemicals, etc.).
- Safety (eye protection, rechecking torque procedure, etc.).
- Vehicle Disassembly/Reassembly (panel removal, part storage, etc.).
- Electrical Component Disassembly/Reassembly (battery disconnection, connector removal, etc.).

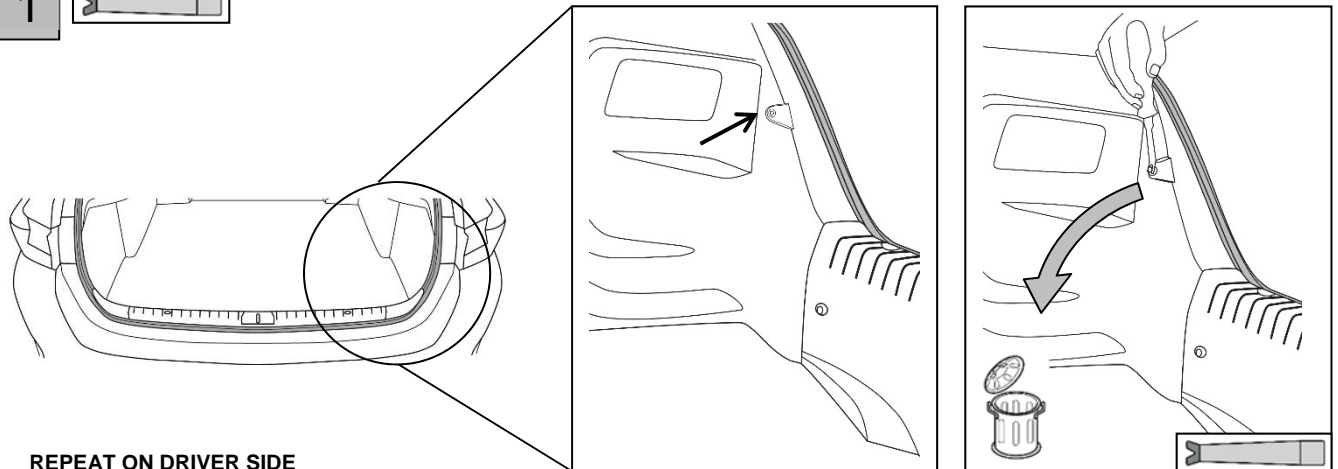
Please see your Toyota dealer for a copy of this document.




TOOLS REQUIRED:
TRIM PLUG REMOVAL TOOL

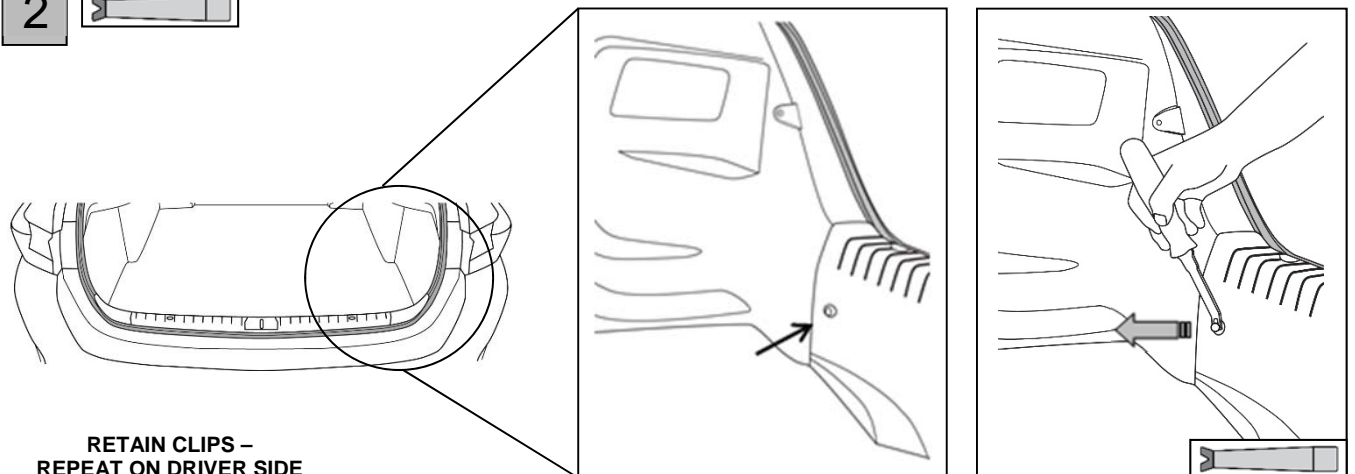


1 



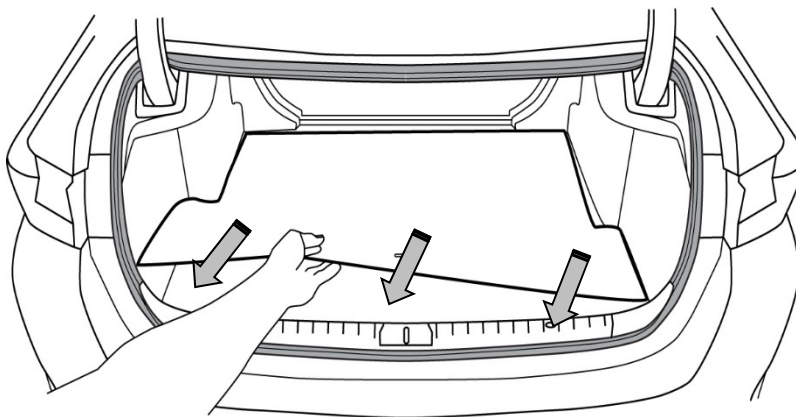
REPEAT ON DRIVER SIDE

2 



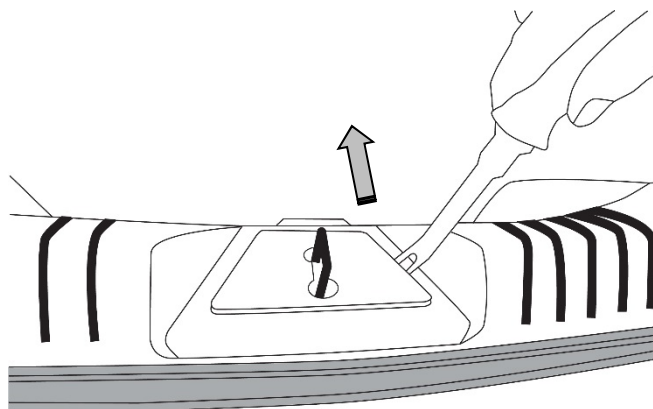
**RETAIN CLIPS -
REPEAT ON DRIVER SIDE**

3

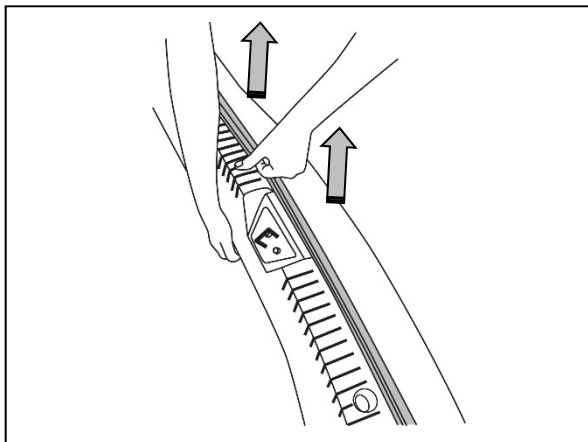


REMOVE

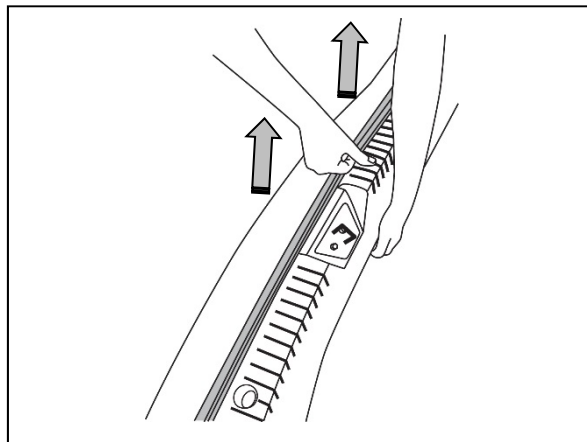
4



5

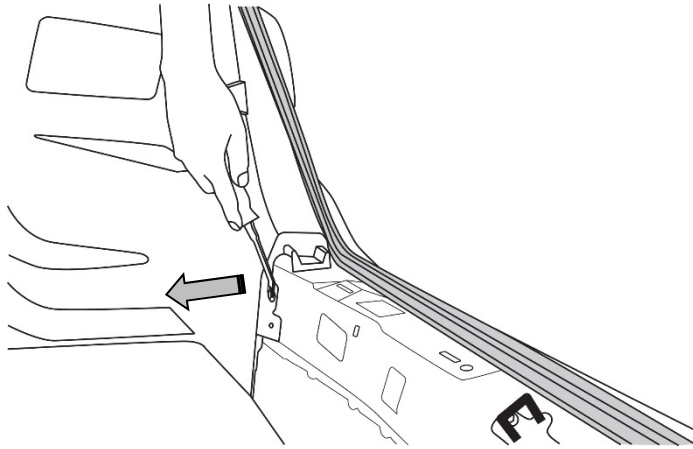


PASSENGER SIDE



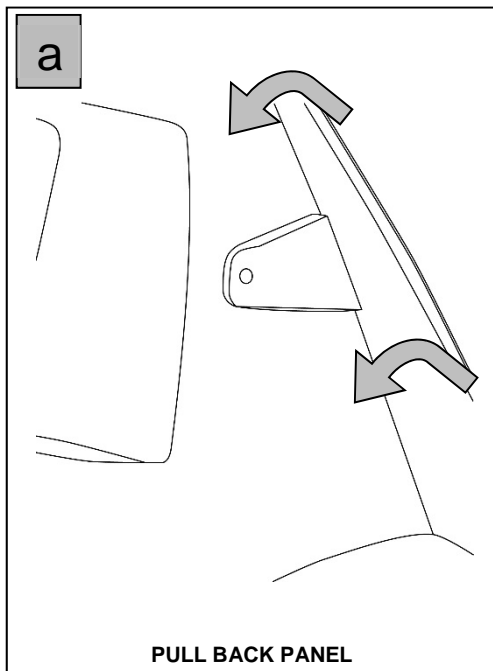
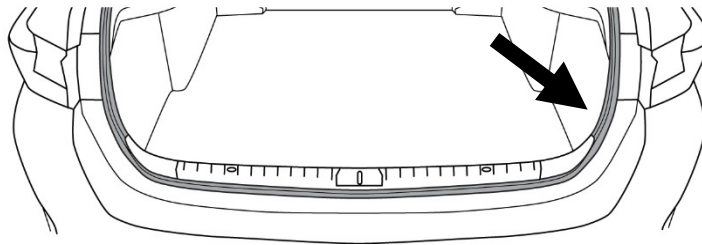
DRIVER SIDE

6

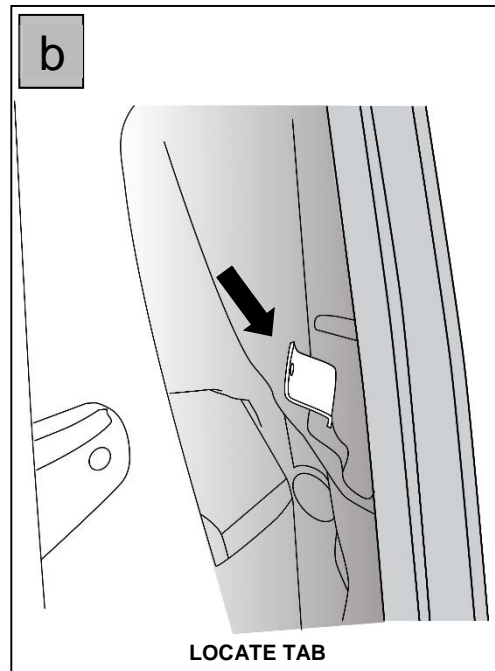


**RETAIN CLIPS –
REPEAT ON DRIVER SIDE**

7



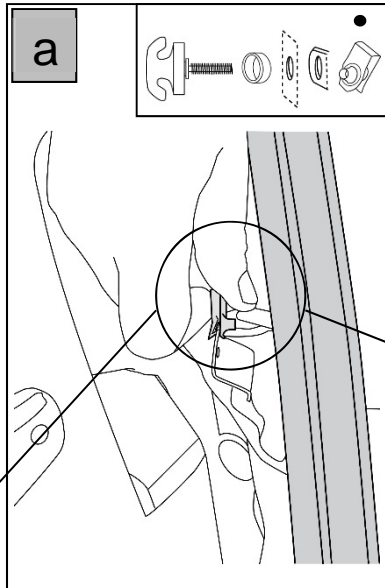
PULL BACK PANEL



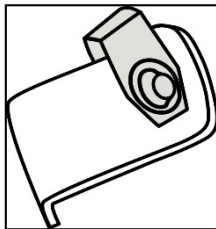
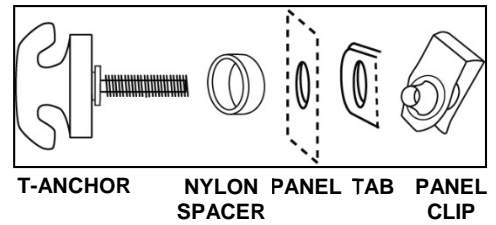
LOCATE TAB

REPEAT ON DRIVER SIDE

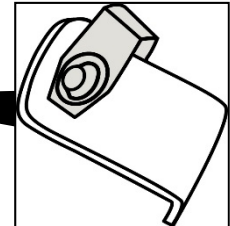
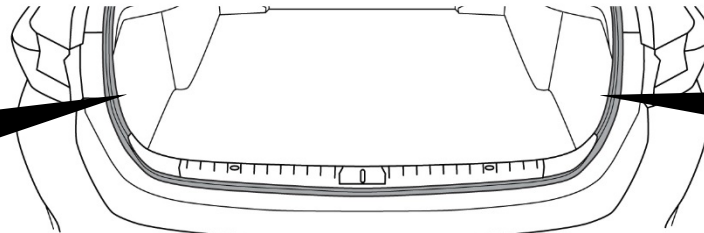
8



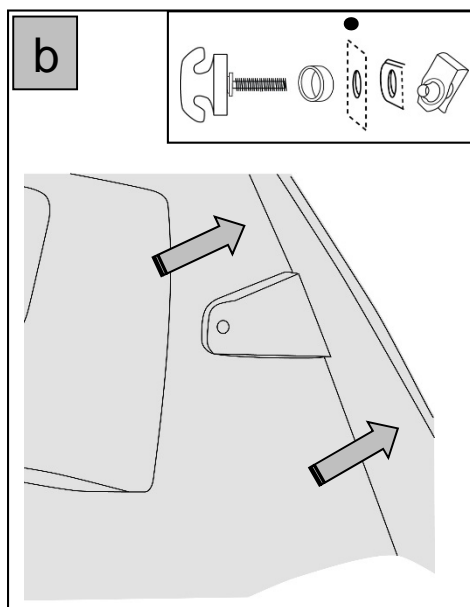
INSTALL PANEL CLIP ON TAB



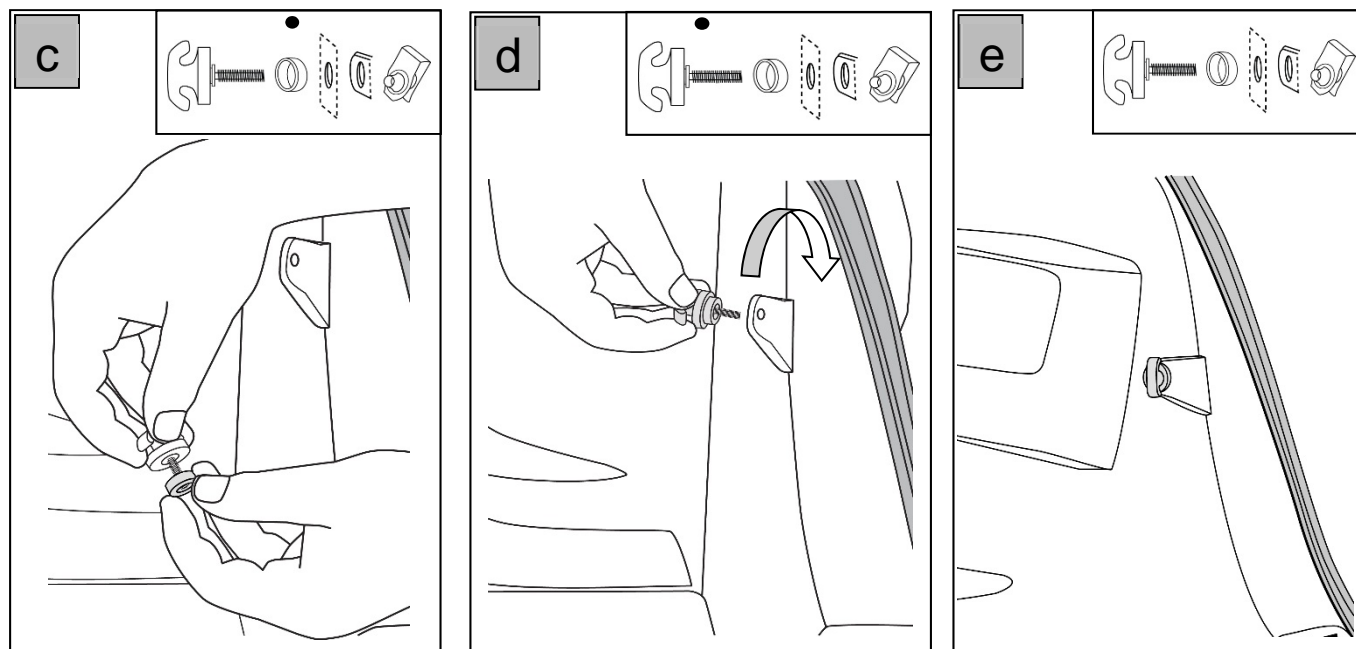
DRIVER SIDE ORIENTATION
10 O'CLOCK – REAR VIEW



PASSENGER SIDE ORIENTATION
2 O'CLOCK – REAR VIEW

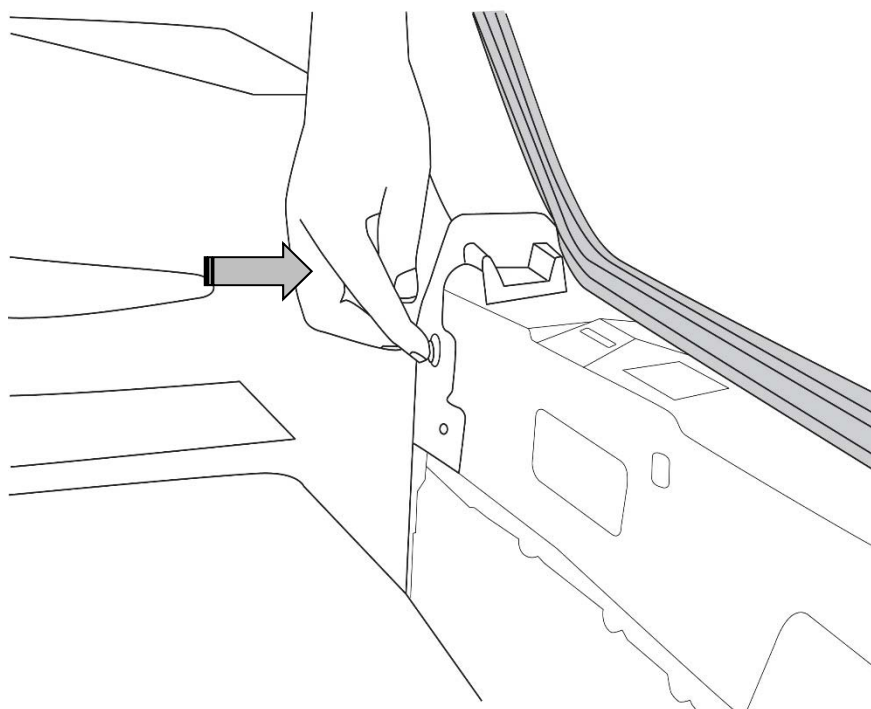


REPLACE PANEL



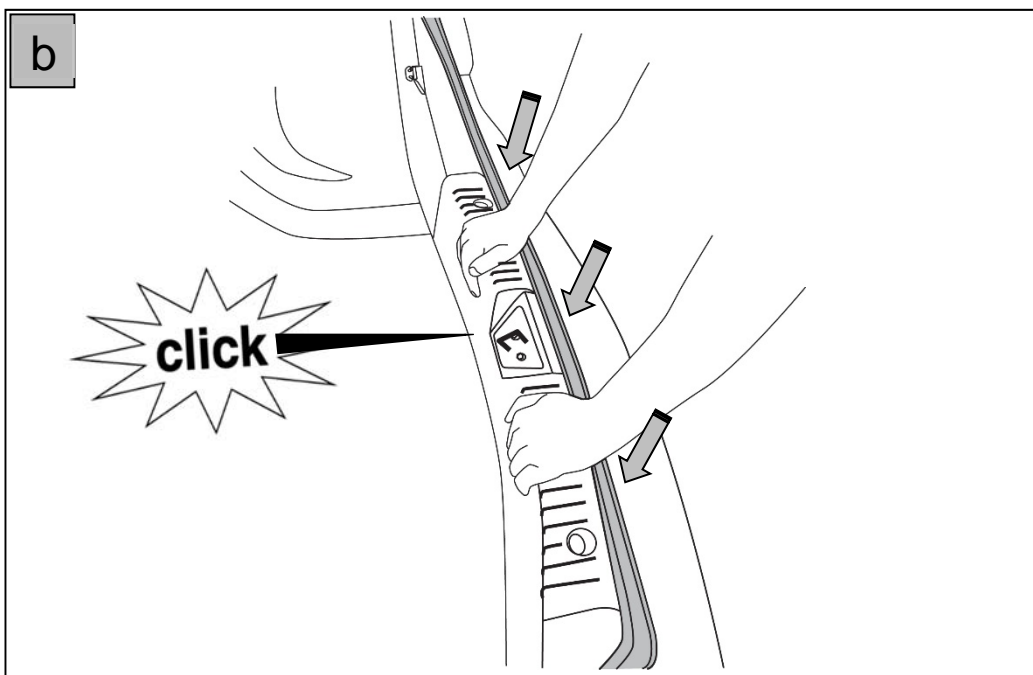
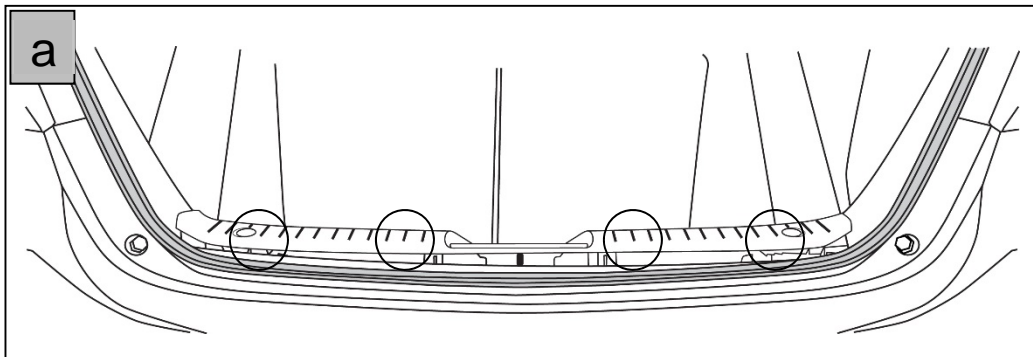
REPEAT ON DRIVER SIDE

9

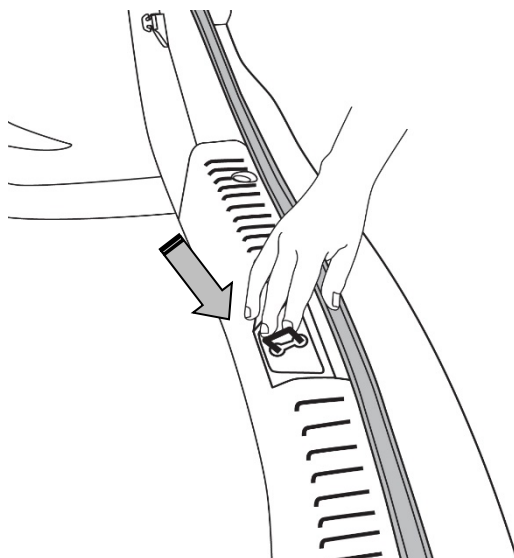


REPEAT ON DRIVER SIDE

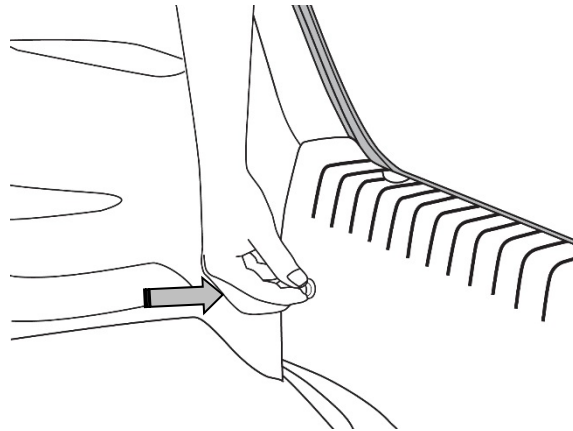
10



11

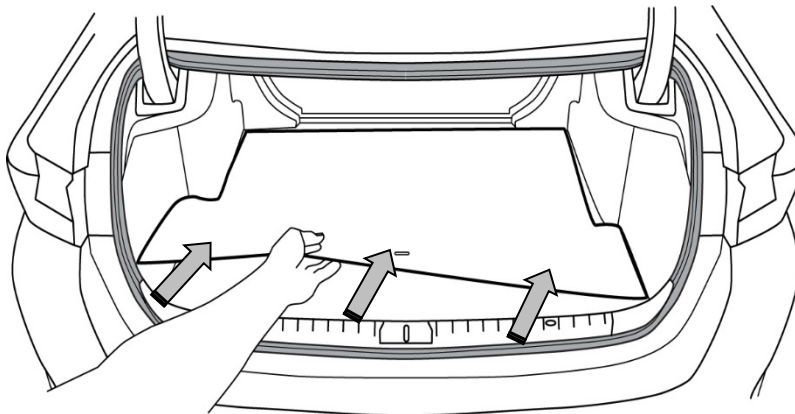


12



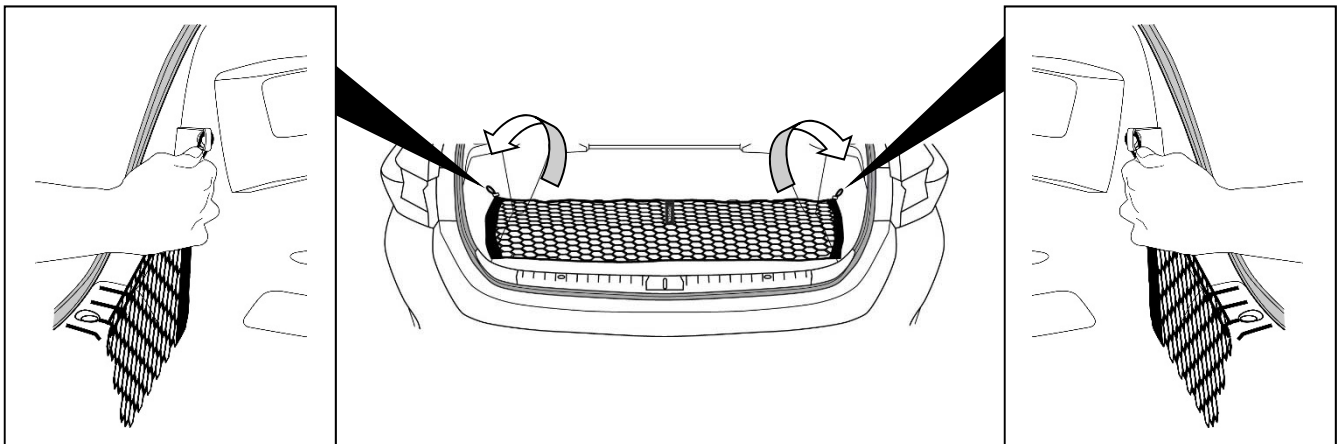
REPEAT ON DRIVER SIDE

13

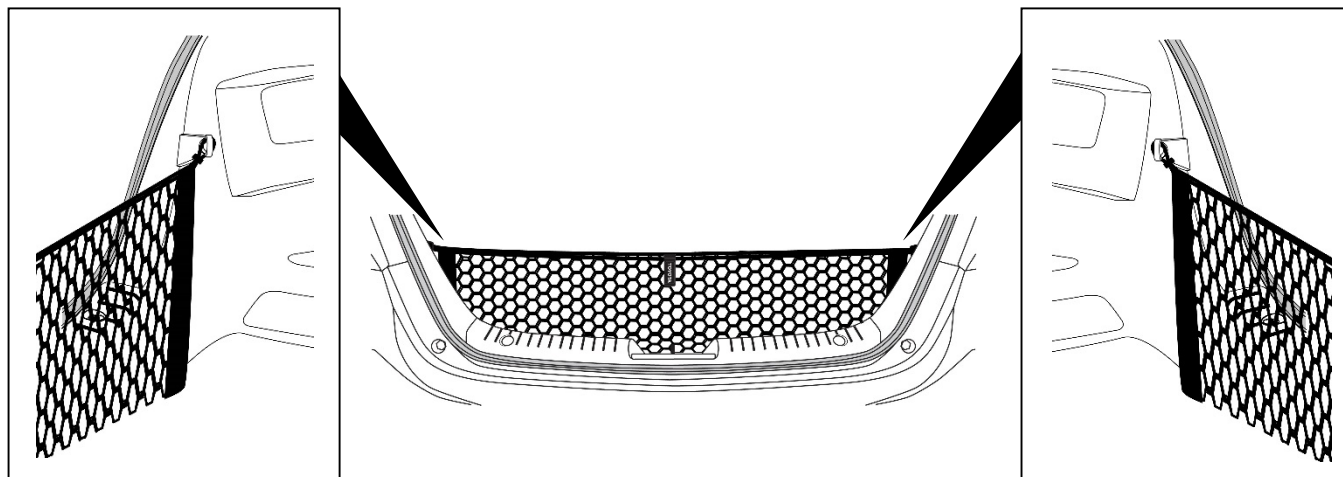


REPLACE

14



15



Checklist - these points **MUST** be checked to ensure a quality installation.

Check:

Look For:

Accessory Function Checks

- ☐ Confirm that the net is attached properly to the anchor points in the vehicle

Confirm net handle is facing toward the rear of the vehicle

Confirm upper loops at the top of the net are attached to the upper T-Anchors of the vehicle

Vehicle Function Checks

- ☐ Vehicle trunk operation

Confirm vehicle trunk opens & closes without interference from Cargo Net

Vehicle Appearance Check

- ☐ After accessory installation and removal of protective cover(s), perform a visual inspection.

Ensure no damage (including scuffs and scratches) was caused during the installation process.
(For PPO installations, refer to TMS Accessory Quality Shipping Standard.)