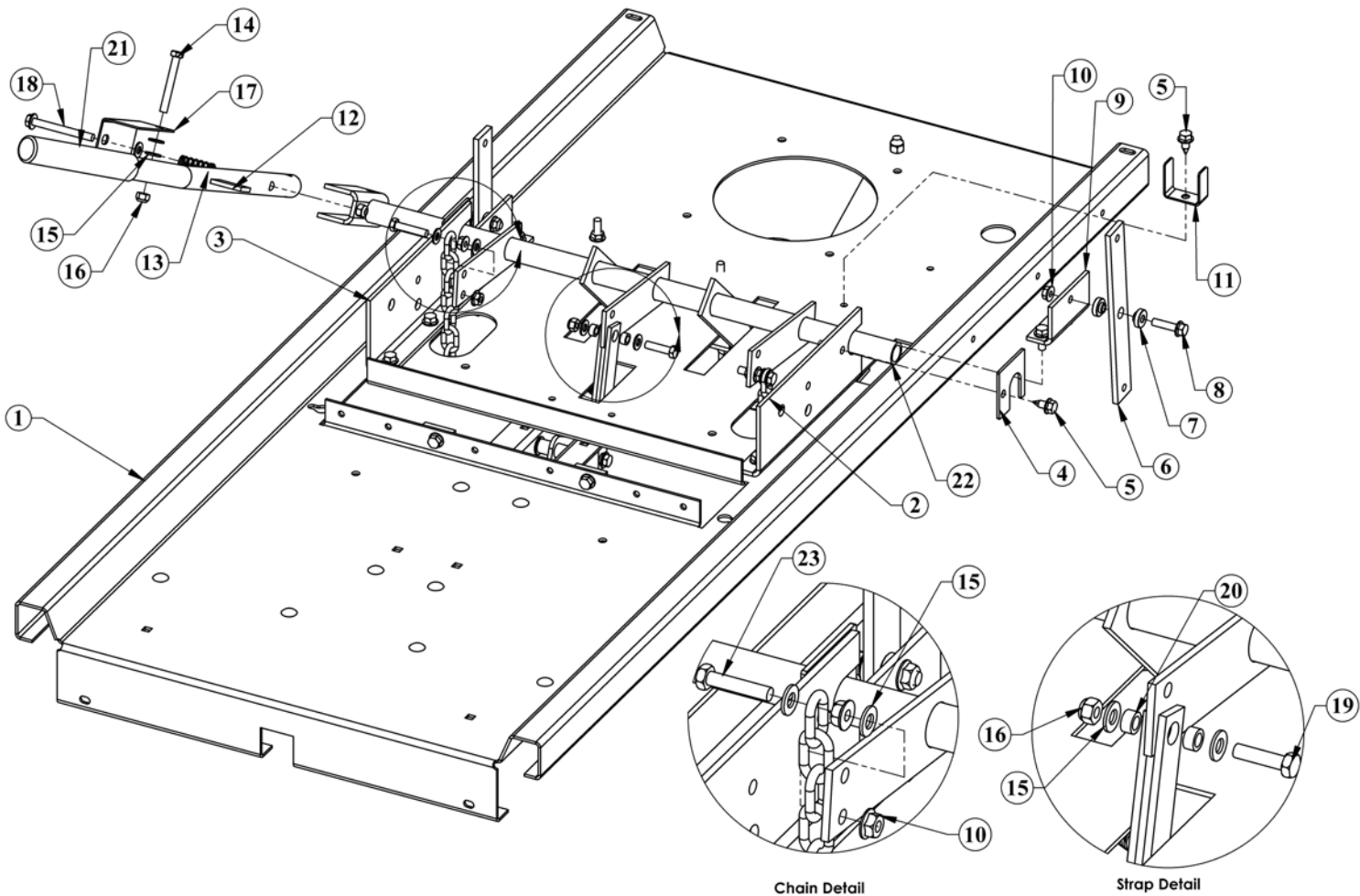


PARTS BREAKDOWN

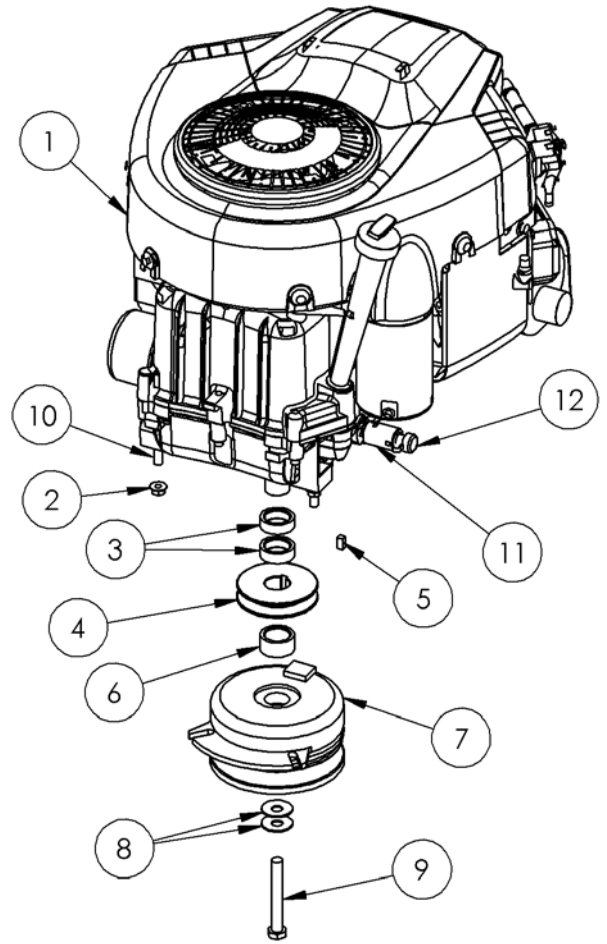
Item #	Description	Part #
1	Frame Pan	9999
2	Lift Support Plate (right)	9937
3	Lift Support Plate (left)	9936
4	Lock Plate	9922
5	Bolt - Self Tapping, 5/16-18	26x249
6	9" X 1.25" Steering Linkage Txt Blk	10898
7	Spacer	B99S
8	5/16-18 X 1 1/4 Serrated Flange Bolt	NB253
9	Linkage Tab	9958
10	5/16-18 Serrated Flange Nut	NB170
11	Solenoid Bracket Painted	9913

Item #	Description	Part #
12	Height Adjust Handle	9952
13	Deck Lift Handle Spring	10535
14	5/16-18 X 2 1/2 GR5 Bolt	NB138
15	5/16 SAE Washer	NB275
16	Nut - Nyloc 5/16-18 ZY	NB181
17	Front Handle Cover	9941
18	5/16-18 X 3 GR2 Bolt	NB563
19	Bolt - 5/16-18 X 1 1/4 HCC GR5 ZY	NB504
20	Bushing - Latch Pin	7839Z
21	Height Adjust Handle Grip	7826
22	Deck Lift Weldment	12838
23	Bolt - 5/16-18 X 1 1/2 HCC GR5 ZY	NB505

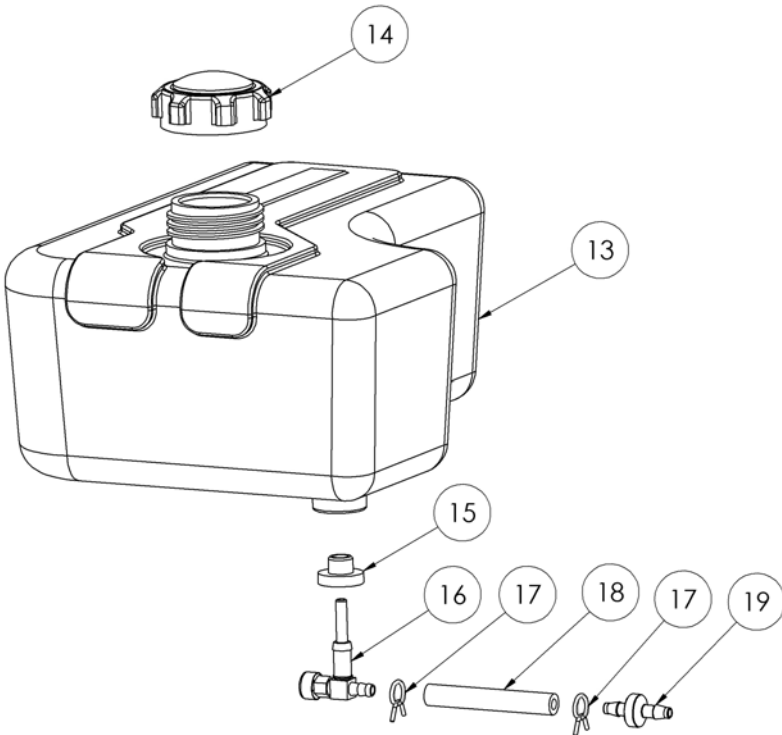


PARTS BREAKDOWN

Item #	Description	Part #
1	25 HP B&S Engine	N/A
2	5/16-18 Serrated Flange Nut	NB170
3	Spacer Engine Pulley	BB105SL
4	Motor Pulley 3.25"	9993
5	1/4 X 1/2 Key Stock	4258
6	Engine Pulley Spacer Short .687	689S
7	Electric Clutch	3813
8	Washer Belleville Engine Pulley	699
9	7/16-20 X 3.25 HCF GR5 ZP	NB705
10	5/16-18 X 1 1/4 Serrated Flange Bolt	NB253
11	Oil Drain Valve	AS122
12	Oil Drain Valve Cap	AS123
Not Shown		
Description	Part #	
Solenoid Assembly	9043	
Wiring Harness	10264	



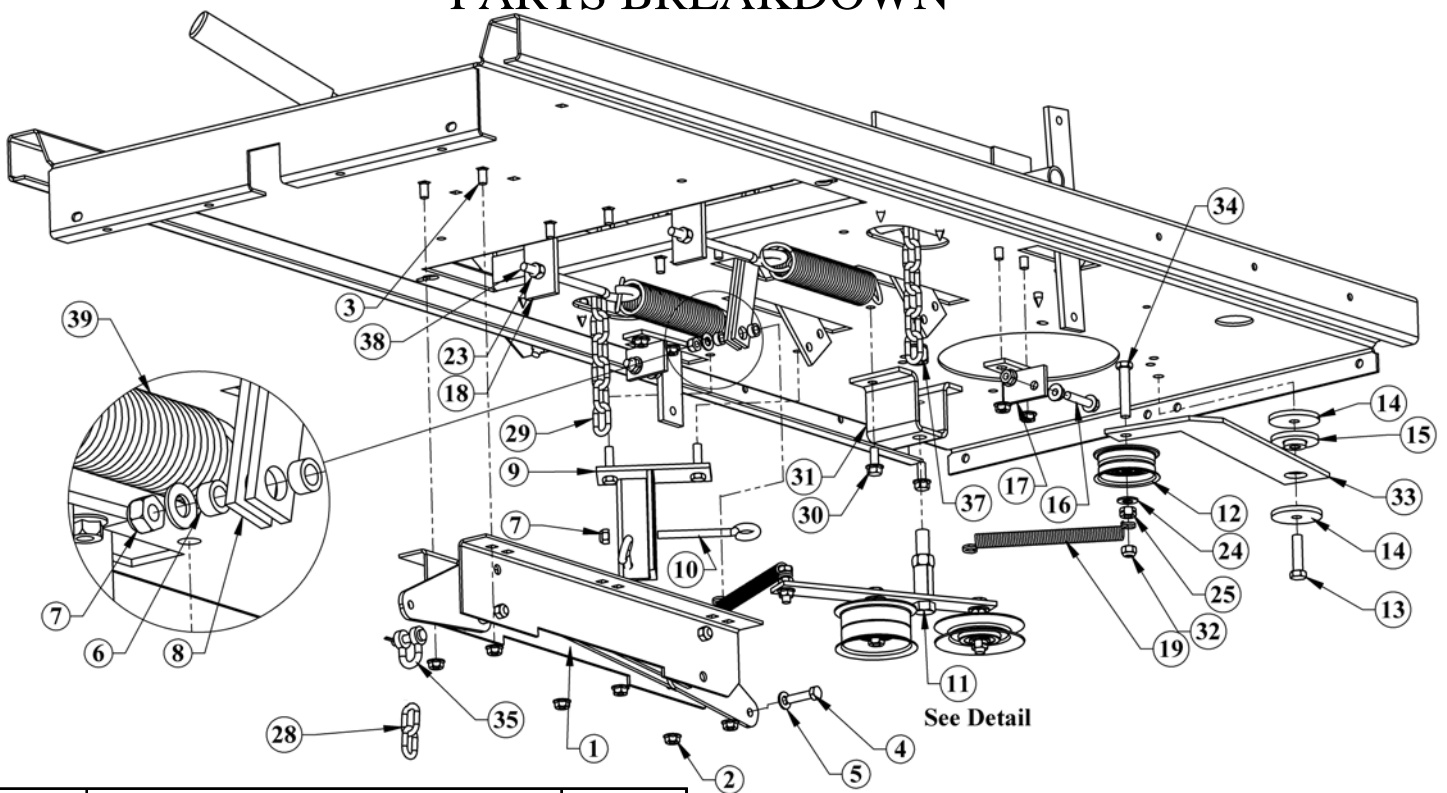
ENGINE ASSEMBLY



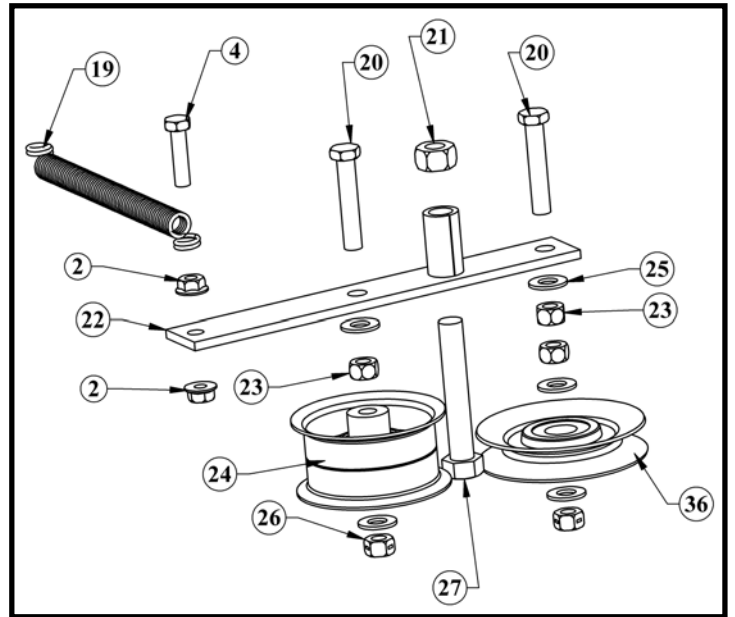
GAS TANK ASSEMBLY

Item #	Description	Part #
13	Fuel Tank	AS100
14	Cap	6102NC
15	Grommet	AS119
16	Fuel Shut Off Valve	AS120
17	Fuel Line Clamp	6FLC
18	1/4" Fuel Line	AS140
19	Check Valve 1/4"	10265
Not Shown		
	Bracket - Gas Tank Mounting	9978TK

PARTS BREAKDOWN



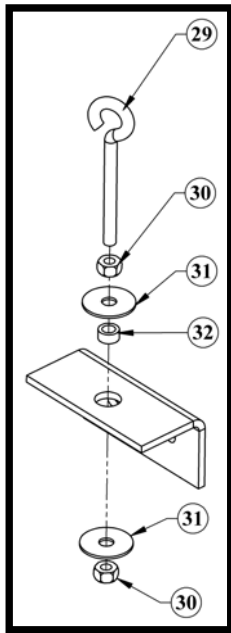
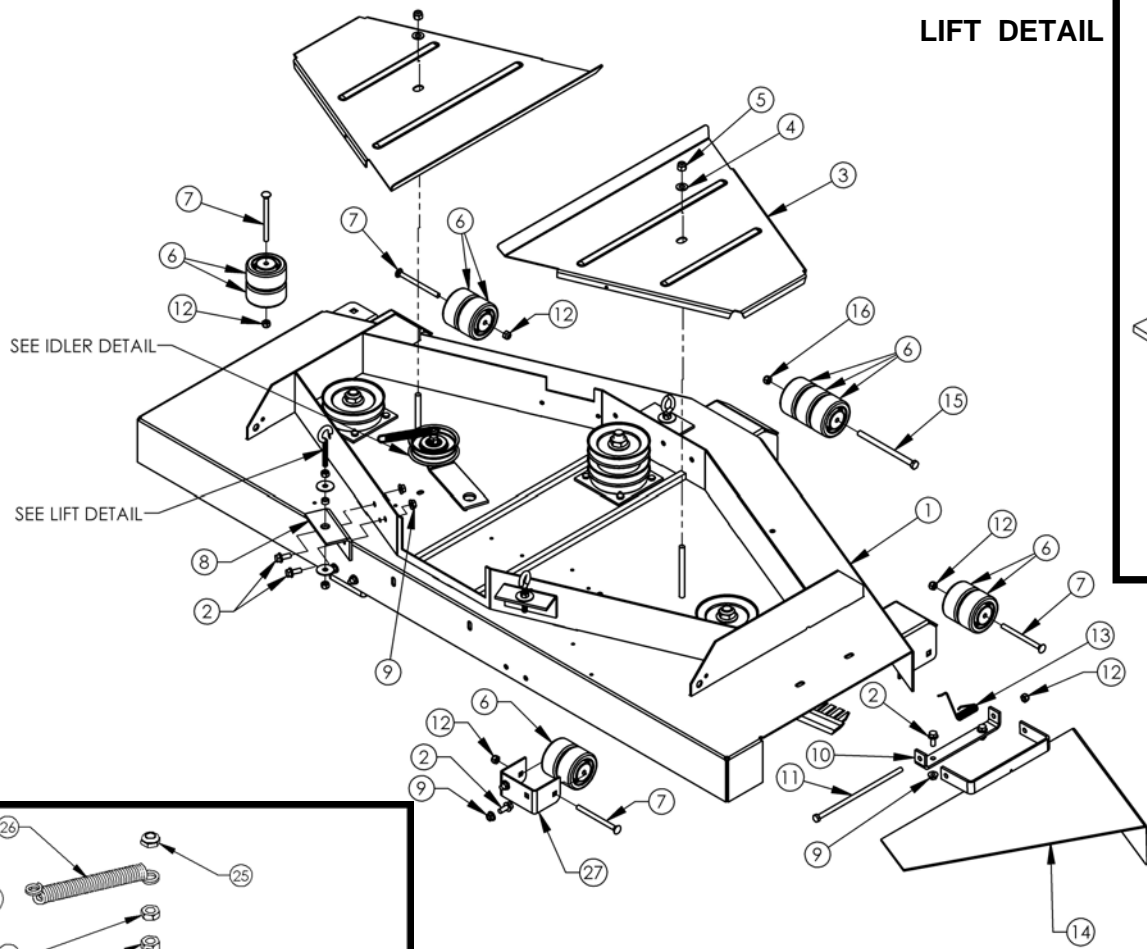
Item #	Description	Part #
1	Deck - Lift Linkage Assembly	12777
2	5/16-18 Serrated Flange Nut	NB170
3	Bolt - Carriage 5/16-18 X 3/4 GR5 ZY	10216
4	Bolt - 5/16-18 X 1 1/4 HCC GR5 ZY	NB504
5	Washer - SAE 5/16 ZY	NB275
6	Bushing - Latch Pin	7839Z
7	5/16-18 Nyloc Nut	NB181
8	Strap - Linkage, Painted	12878
9	Tension Bracket	9918*
10	5/16-18 X 3 1/2 eye bolt	NB315
11	Deck - Belt, Idler Assy	10534
12	Idler Pulley OD-2.16", ID-3/8"	B27
13	Bolt - HCC 3/8-16 X 1 1/2 GR5 ZY	NB107
14	Idler Spacer	6040
15	Idler Bushing	6037
16	Bolt - Serr Flange, 5/16-18 X 1 1/2	NB254
17	Travel Reduction Bracket	11176
18	Sping Assist Bracket	9926
19	Spring - Clutch Rod; T60	682S
20	Bolt - HTC, 3/8-16 X 2 GR5 ZY	NB231
21	Nut - 1/2-13 GR2 ZY	NB213Z
22	Arm - Lower Belt Idler	3691
23	Nut - HNC, 3/8-16 GR2 ZY	NB212
24	Pulley - Idler OD-2.75", ID-3/8"	7509
25	Washer - SAE Flat 3/8 ZY	NB272
26	Nut - 2 Way Lock 3/8-16 ZY	NB280
27	Bolt - HCC 1/2-13 X 3 GR5 ZY	NB131
28	Chain - Deck Hanger Two Links	12825
29	Chain - Deck Hanger 7 Links	13352



Item #	Description	Part #
30	Bolt - Serr Flange, 5/16-18 X 3/4 Gr 5	NB596
31	Belt to Deck Idler Bracket	9957
32	3/8-16 Nyloc Nut	NB182
33	Idler Bracket Painted	9944
34	Bolt - HCC 3/8-16 X 2 GR5 ZY	NB198
35	Shackel - Anchor 1/4"	12957
36	Pulley - Idler V OD-3.54", ID-3/8"	3622
37	Nut - Nyloc 1/2-13 ZY	NB281
38	3/8-16 X 5 Turned Eyebolt ZY	10546
39	Tilt Spring	2335

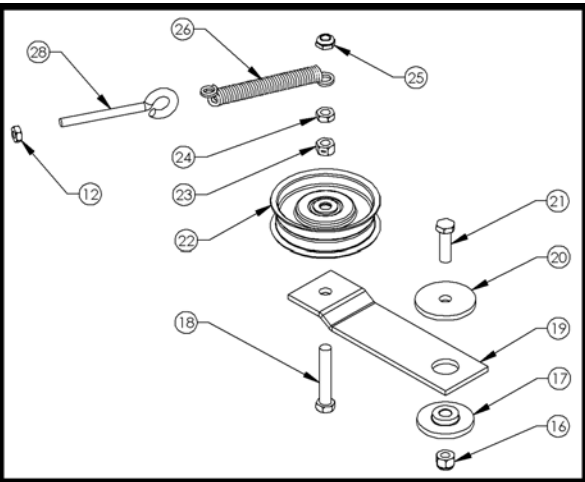
PARTS BREAKDOWN

LIFT DETAIL



SEE IDLER DETAIL

SEE LIFT DETAIL



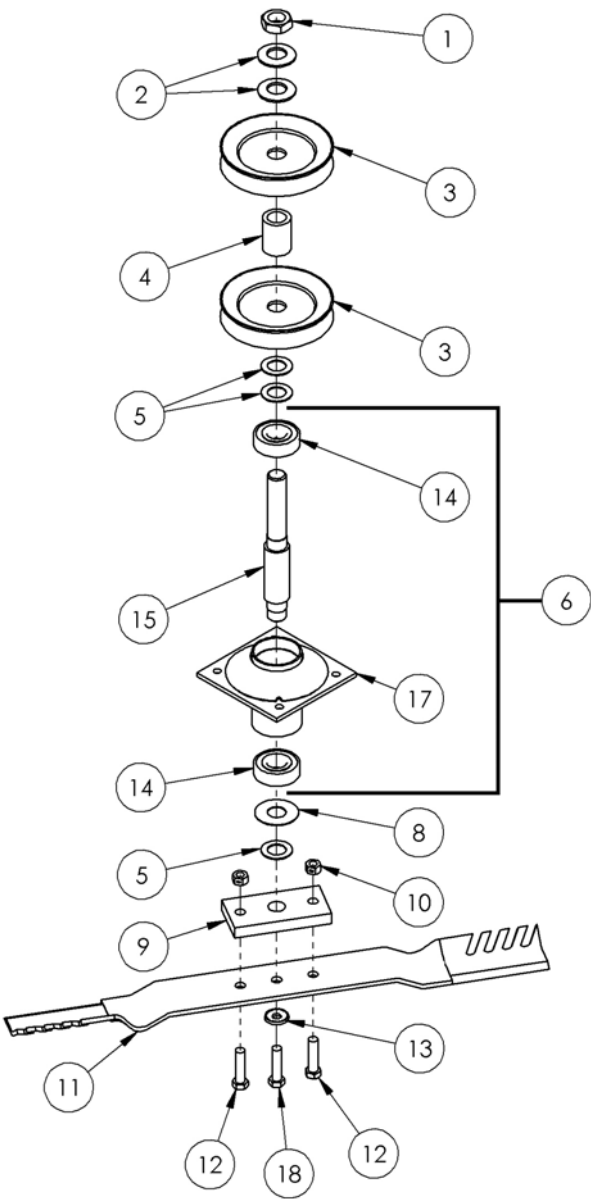
IDLER DETAIL

Item #	Description	Part #
1	60 ZT Deck Weldment	9901TK
2	5/16-18 x 3/4 Serr flange bolt	NB596
3	Belt Cover	6025TK
4	3/8 SAE washer	NB272
5	3/8-16 nyloc nut	NB182
6	Anti-scalp roller 3/8 ID	AS001
7	Bolt - Carriage, 5/16-18 X 4 ZY	NB101
8	Deck Hanger	9938TK
9	5/16-18 serrated flange nut	NB170
10	Chute mount	6030TK
11	5/16-18 x 8 1/2 HCC GR2 ZP	NB136
12	Nut - Nyloc 5/16-18 ZY	NB181
13	Torsion spring	0166X4
14	Discharge Chute	9902TK

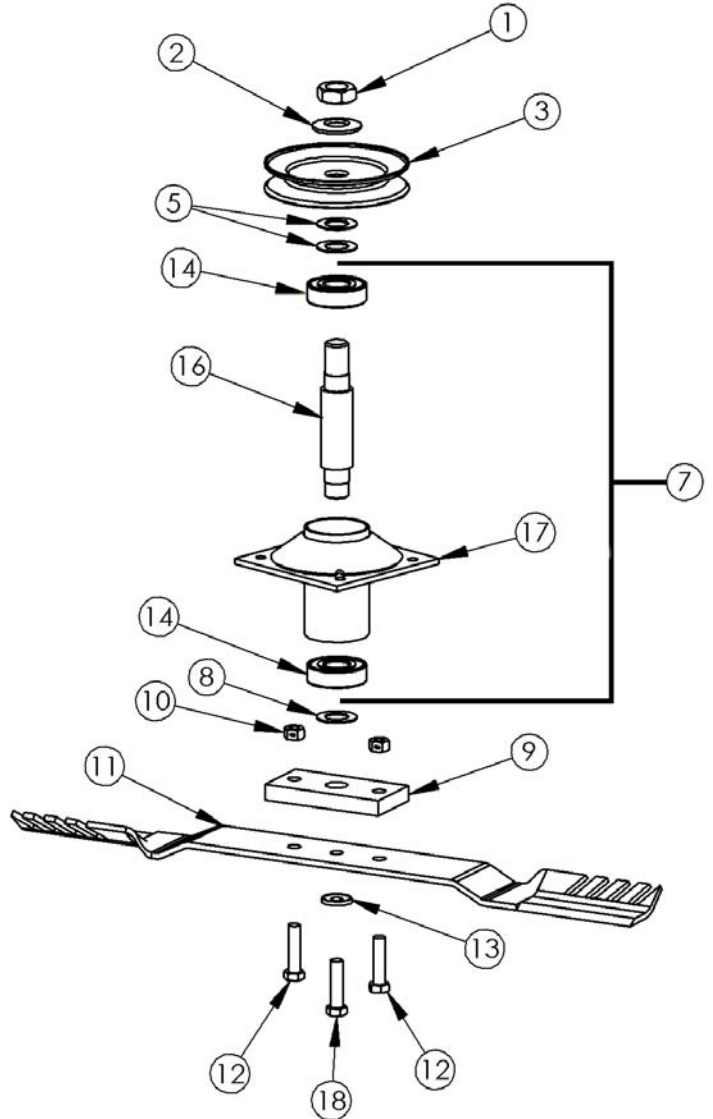
Item #	Description	Part #
15	3/8-16 x 5 1/2 GR5 ZP	NB575
16	3/8-16 nyloc nut	NB182
17	Idler Bushing	6037
18	3/8-16 x 2 1/4 HTC GR5 ZP	NB693
19	Idler Arm -painted	6041TK
20	Idler Spacer	6040
21	3/8-16 x 1 1/2 HCC GR5 ZP	NB107
22	Idler Pulley OD 3.25, ID 3/8	B527
23	3/8-16 2-way lock nut	NB280
24	3/8-16 Jam nut	NB174
25	3/8-16 Nylock nut Jam	NB207
26	Two speed spring (A232 1998)	TZ2S
27	Rear Roller Bracket	10775
28	5/16-18 x 3 1/2 Center of Eye-5/8 Eye	NB315
29	Eyebolt - 5/16-18 X 2	10198
	Eyebolt - 5/16-18 x 2 3/4" ZY (FRONT)	2046
30	Nut - 5/16-18 HNC GR2 ZY	NB210Z
31	Washer - Fender, 5/16 X 1 1/4	NB579
32	Bushing - Latch Pin	7839Z

PARTS BREAKDOWN

1	3/4-16 Nut	NB175
2	Belleville Washer	AS155
3	Pulley 4 1/2"	B4104
4	Spacer	12823
5	3/4 ID X 1 1/4 OD 18 GA Washer	NB179
6	Center Blade Driver	12824
7	Outer Blade Driver	10540
8	3/4 ID X 1 3/4 OD Flat Washer	B98W
9	Blade Mount Plate	9008
10	3/8-24 Two Way Lock Nut	NB216
11	Blade	3293
12	3/8-24 X 1 Bolt	NB238
13	Belleville Washer	NB607
14	Blade Bearing	B98
15	6" Blade Driver Shaft	9078
16	5" Blade Driver Shaft	9077
17	Blade Driver Housing	10539
18	3/8-24 X 1 Engine Bolt Locktite	NB238N

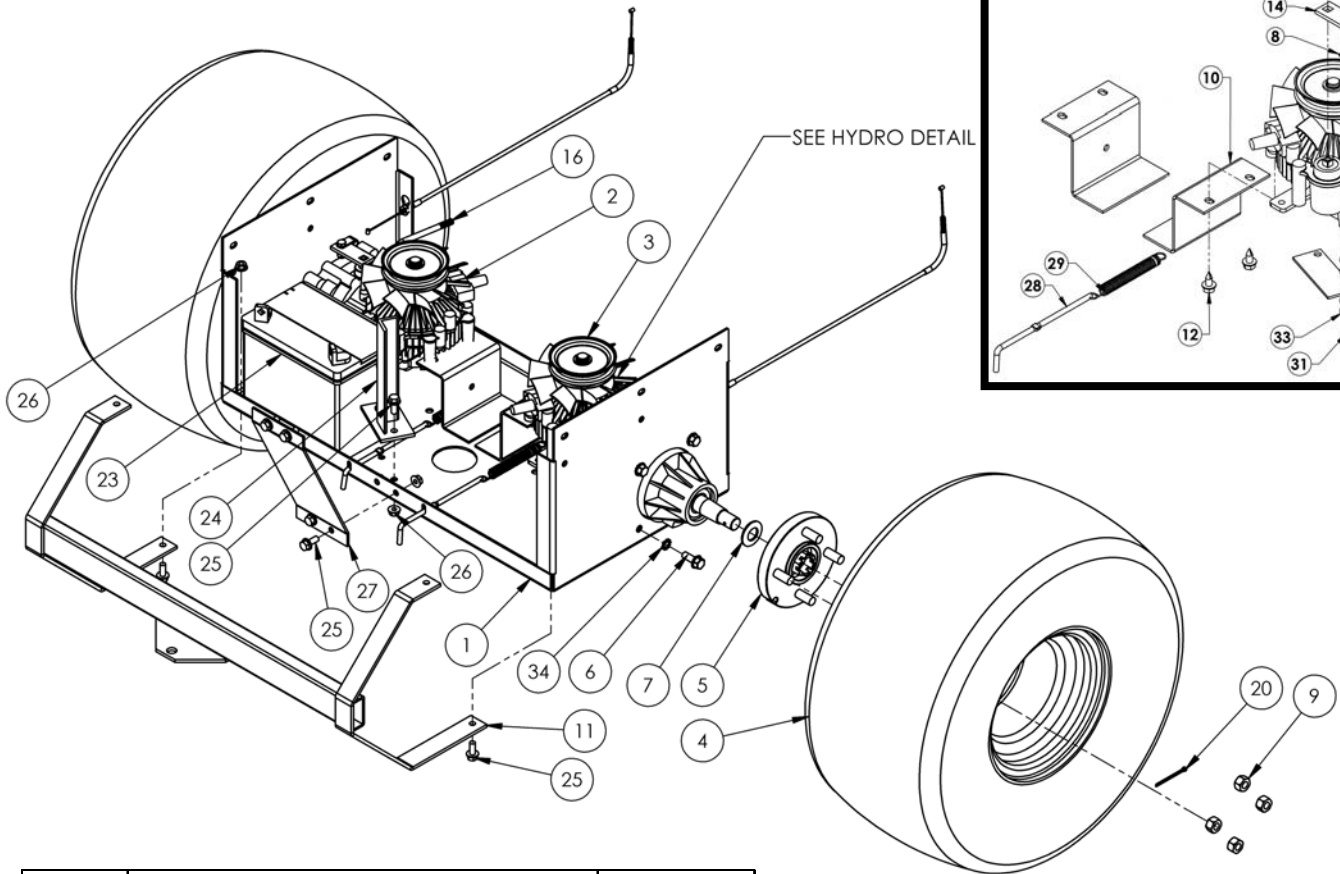


Center Driver



Outside Driver

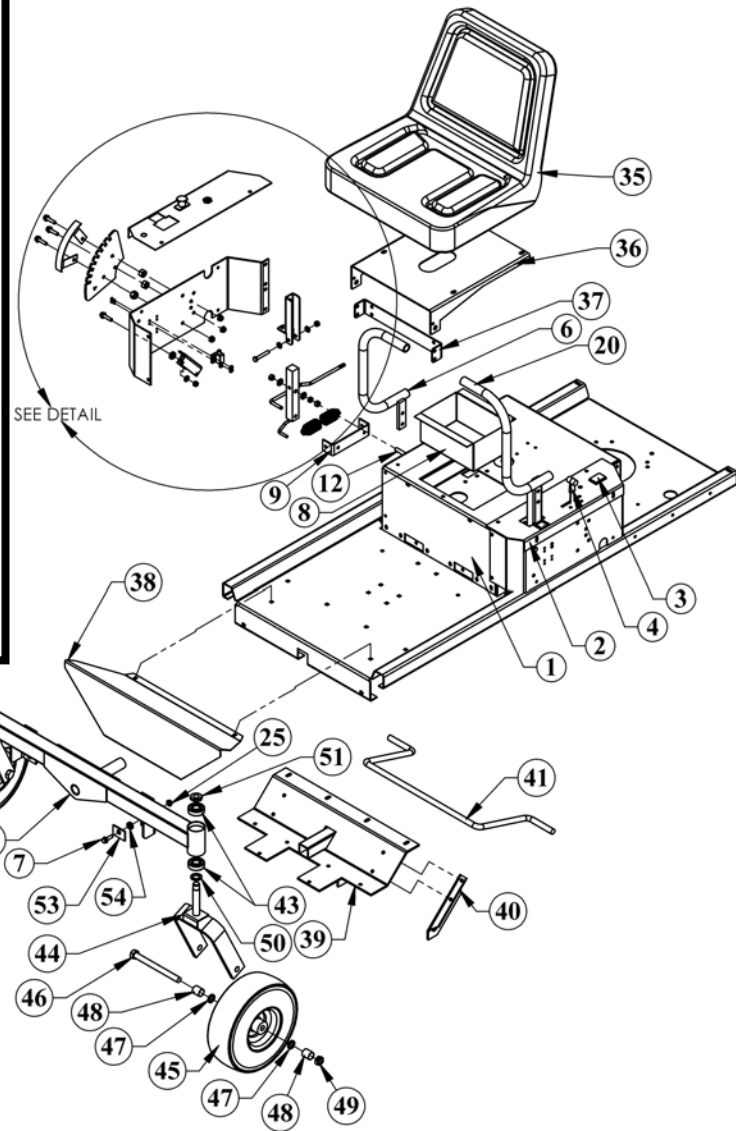
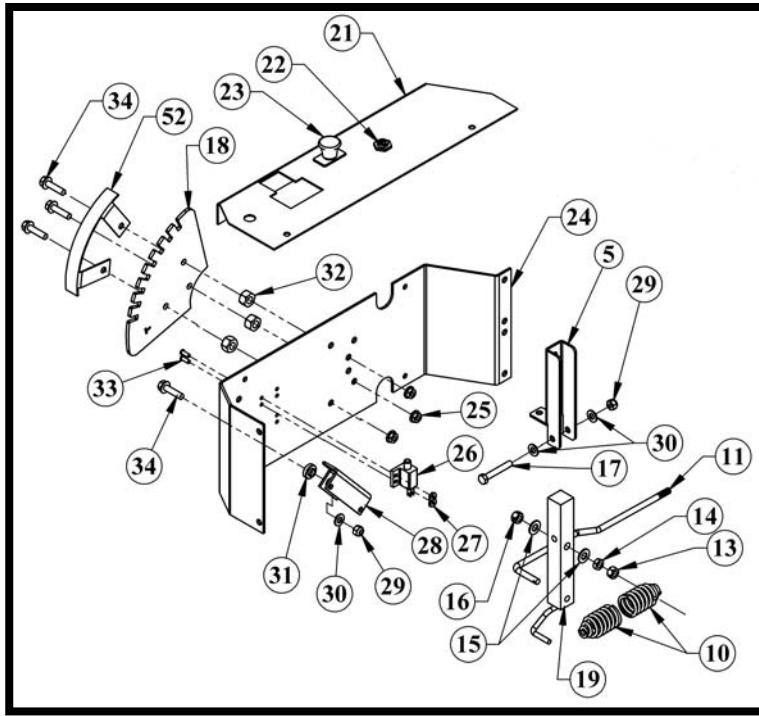
PARTS BREAKDOWN



Item #	Description	Part #
1	Hydro Pan Weldment	9935
2	Eaton Hydro w/ Resv & Tank	10268
3	Eaton Hydro w/ Resv & Tank & Ext	10269
4	Tire & Wheel 20 x 10 x 8	3756
5	Wheel Hub Assembly	9920
6	Screw - 3/8 - 16 Rolok	13044
7	1.5 x .761 x .098 x .134 Belv washer	AS155
8	5/64 x 3/4 cotter pin	NB519
9	Wheel Hub Lug Nut 1/2-20	2203LN
10	Support - Hydro	13082
11	Bumper Weldment	9959
12	Screw - .312 - 18 X .75	26X249
13	WASHER .37 SQ 16 GA FLAT	17X148
14	Shift linkage- Painted	9919
15	Hydro linkage Right Weldment	9929
16	Hydro linkage Left Weldment	9928
17	1/4-28 x 3/4 GR5 ZP	NB620
18	1/4 SAE Washer	NB274
19	5/16 SAE Washer	NB275
20	1/8 X 3/4 Cotter Pin	NB125
21	Latch Pin Bushing	7839Z
22	Ball Linkage right (silver)	NB263
23	Battery	
24	Clutch Stop Weldment	9973

Item #	Description	Part #
25	5/16-18 X 3/4 Serr Flng Bolt	NB596
26	5/16-18 Serrated Flng Nut ZY	NB170
27	Rear Stabilizer	9946
28	Hydro Release Handle	9923
29	Spring for Idler Arm	BRS6
30	Hydro Release Plate	9924
31	5/16-18 X 1 Rolock Screw ZY	10543
32	5/16 SAE Washer ZY	NB275
33	5/16 X 7/10 X .006 Sp Wave Washer	10544
34	Washer - 3/8 lock, External Tooth; ZT	13045
NOT SHOWN		
	Battery Hold Down	BHOLD
	1/4-20 X 1 1/2 HTC GR2 ZY	NB162
	1/4-20 Nylok Nut	NB180
	1/4 SAE Washer	NB274
	1/4-20 Kep Nut ZY	NB203
	Battery Cable 10" Red	BCSR
	Battery Cable 10" Black	BCSR
	Latch Pin Bushing	78392

PARTS BREAKDOWN



Item #	Description	Part #
1	Seat Base	9998
2	Control Panel	9991
3	Hour Meter	3803
4	Throttle Control 35"	3788
5	Handle Pivot	9985
6	1" Dir. Handle Weldment, Right Txt Blk	11768
7	5/16-18 X 1 Serrated Flange GR5 Bolt	10548
8	Storage Compartment	690424
9	5.5" Neutral Bracket Txt Blk	10899
10	Tapered Spring	3609
11	Steering Linkage Control Arm	9927
12	3/8-16 X 2 1/4 GR5 Bolt	NB693
13	3/8-16 GR2	NB212
14	3/8-16 Jam Nut	NB174
15	3/8 SAE Washer	NB272
16	3/8-16 2-Way Lock Nut	NB280
17	5/16-18X2 GR5 Bolt	NB507
18	Height - Selector, Deck, Txt Blk	9940
19	Weldment - Lever; ZT Brake Shut Off Arm - Control, (Left)	13324 9986
20	1" Dir. Wldmnt, Left Txt Blk	11769
21	Control Panel Right	9990
22	Key Switch	3623
23	PTO Switch	3605
24	Side Plate	9996
25	5/16-18 Serrated Flange Nut	NB170
26	Return to Neutral Switch	3695
27	8-32 Kep Nut	NB201

29	5/16-18 Nyloc Nut	NB181
30	5/16 SAE Washer	NB275
31	Spacer	B99S
32	1/2-13 GR2 Nut	NB213Z
33	8-32X 1/2 Phil Truss Screw	NB197
34	5/16-18 X 1 1/4 Serrated Flange Bolt	NB253
35	ZT Seat 15"	10569
36	Seat Mount	9984
37	Seat Bracket	3807
38	Foot Plate	9995
39	Pivot Plate Housing Weldment	9954
40	Deck Stabilizer-Left	9950
41	Deck Stabilizer-Right	9951
42	Deck Stabilizing Bar	9949
43	Pivot Axle Weldment-Painted	9994
44	Blade Bearing	B98
45	Textured Black Caster T50	665
46	Tire/Wheel Slick 4.10x3.5-5 5/8 Bearing	3010
47	5/8-11 X 7 HCC GR5 ZP	NB624
48	5/8 ID X 1 OD 10 GA Washer	NB178
49	Wheel Spacer 1"	3395
50	5/8-11 2 Way Lock Jam Nut	NB595
51	13/16 X 1 1/4 X 1/8 Washer	NB195
52	3/4-16 Jam Nylok Nut	NB122
53	Bracket - Height Indicator Txt Blk	11770
54	Washer - Axle, Textured Black	9915

NOT SHOWN	
Arm Rest Kit	10571
Mat for Pan	10729
Mat for Foot Plate	10549
Seat Grommet	9931
1/4-20 X 1 1/2 HCCGR2ZP	NB104Z
1/4 SAE Washer	NB274
1/4-20 Nylok Nut	NB180
60" Choke Cable	9914

Replacement Parts

Quick Reference

Swisher Part #	Part Description
12777	Deck Lift Linkage Assy
AS069	Fuse 10 Amp
6046	47" Hydro Belt
3756	20 x 10 x 8 Rear Tire
5058	122" Deck Belt
3293	20.5 Mulching Blade
10263	83" Engine to Deck Belt
10540	Blade Driver Assembly (outside)
12824	Blade Driver Assembly (center)



CAUTION

Use extreme care when working on machinery.

Before performing any maintenance, turn off engine, allow the unit to cool & remove the key. Disconnect spark plug wire.

Set Parking Brake by placing the control handles in the neutral or outward position.

Do not wear watch or jewelry. Do not wear loose fitting clothes. Observe all common safety practices with tools.