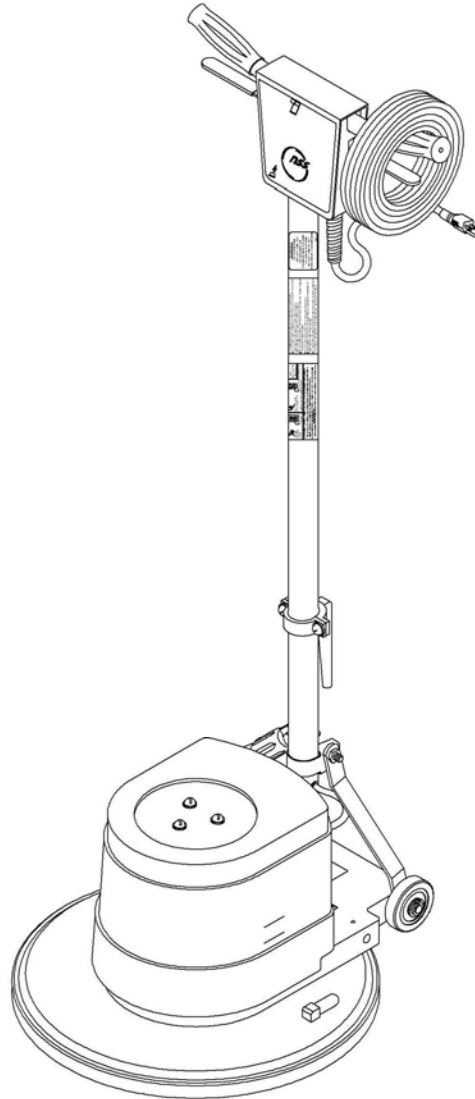
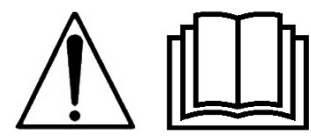


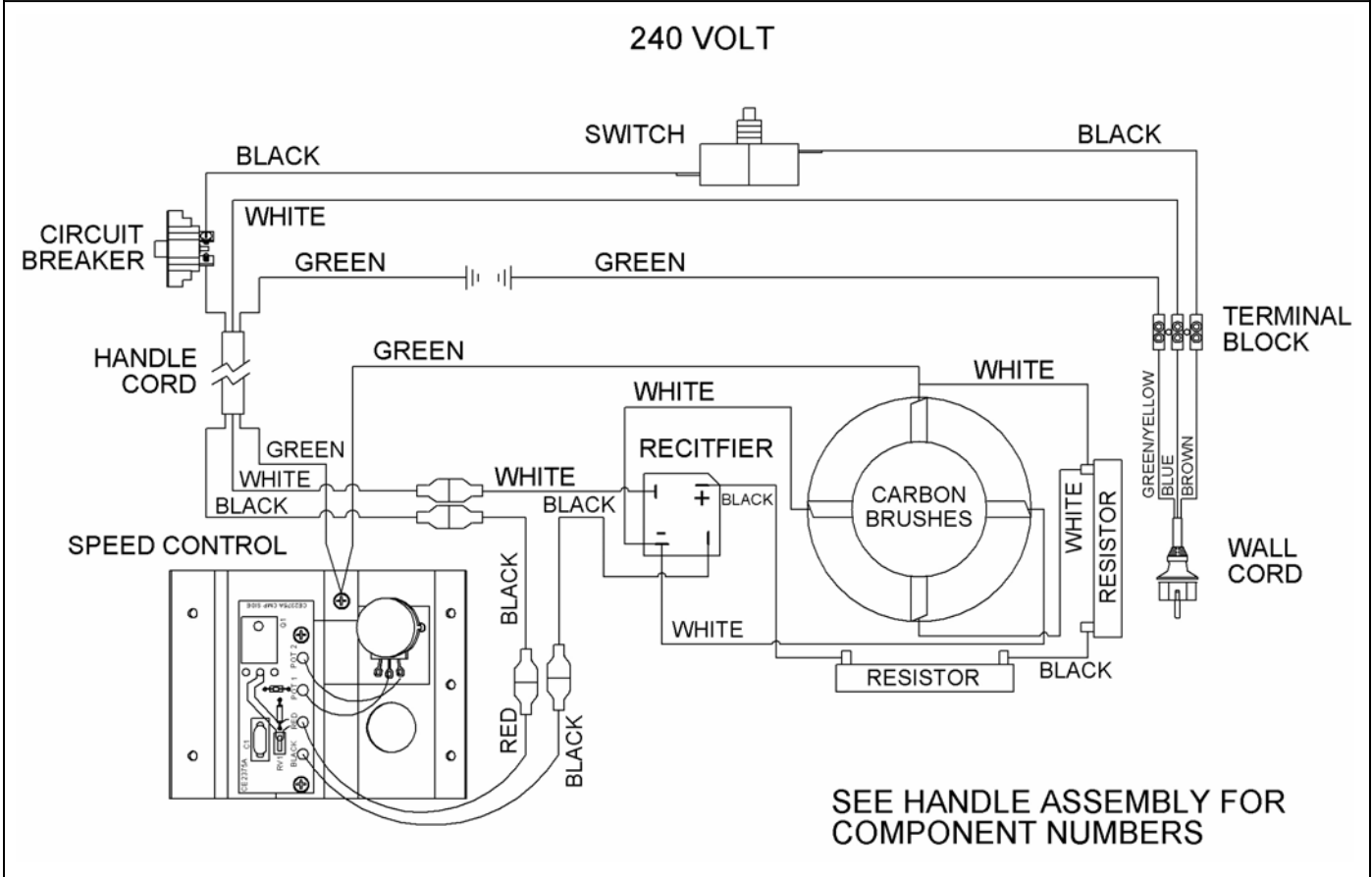
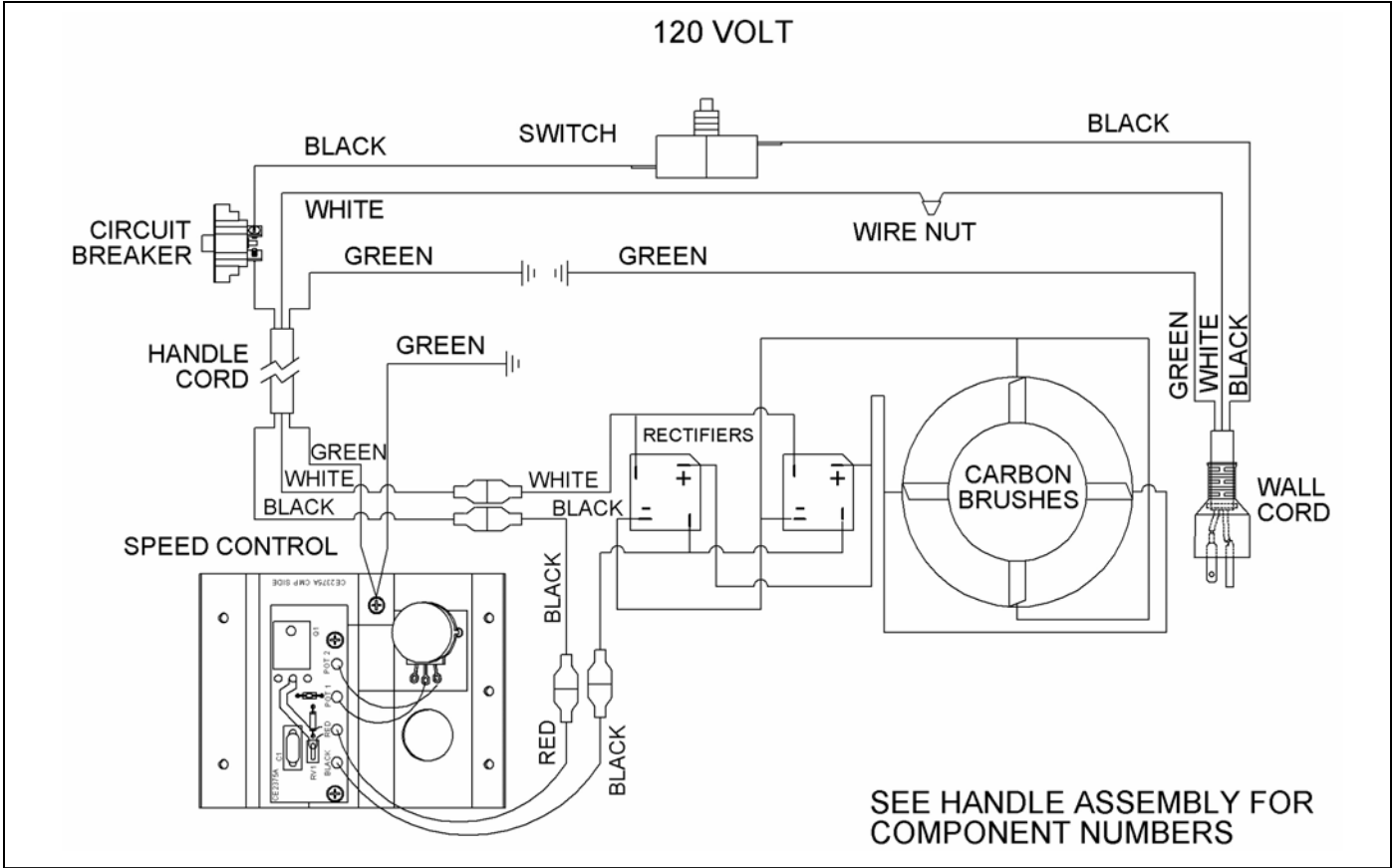
PARTS LIST
MAVERICK 300 STANDARD SPEED
FLOOR MACHINE



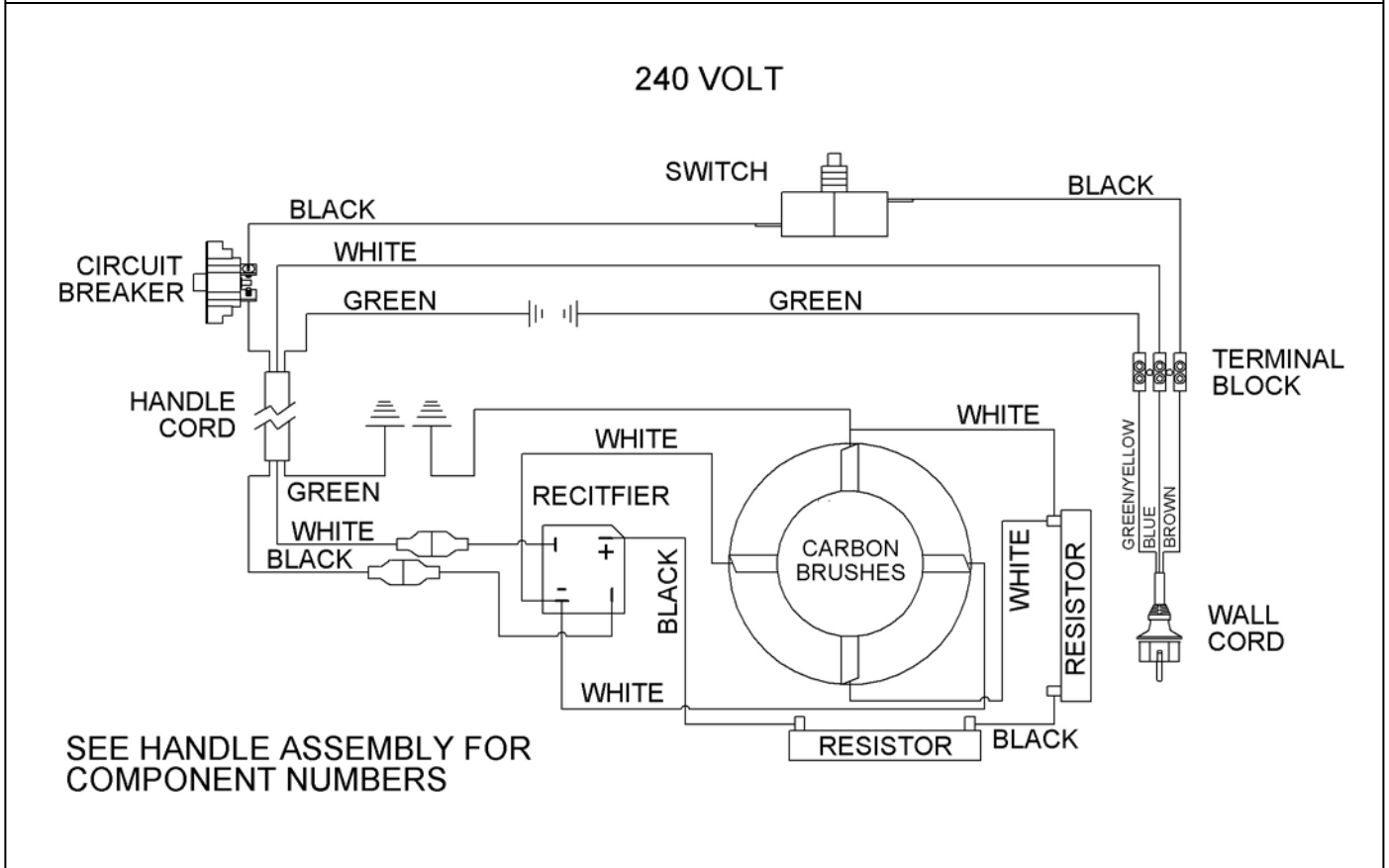
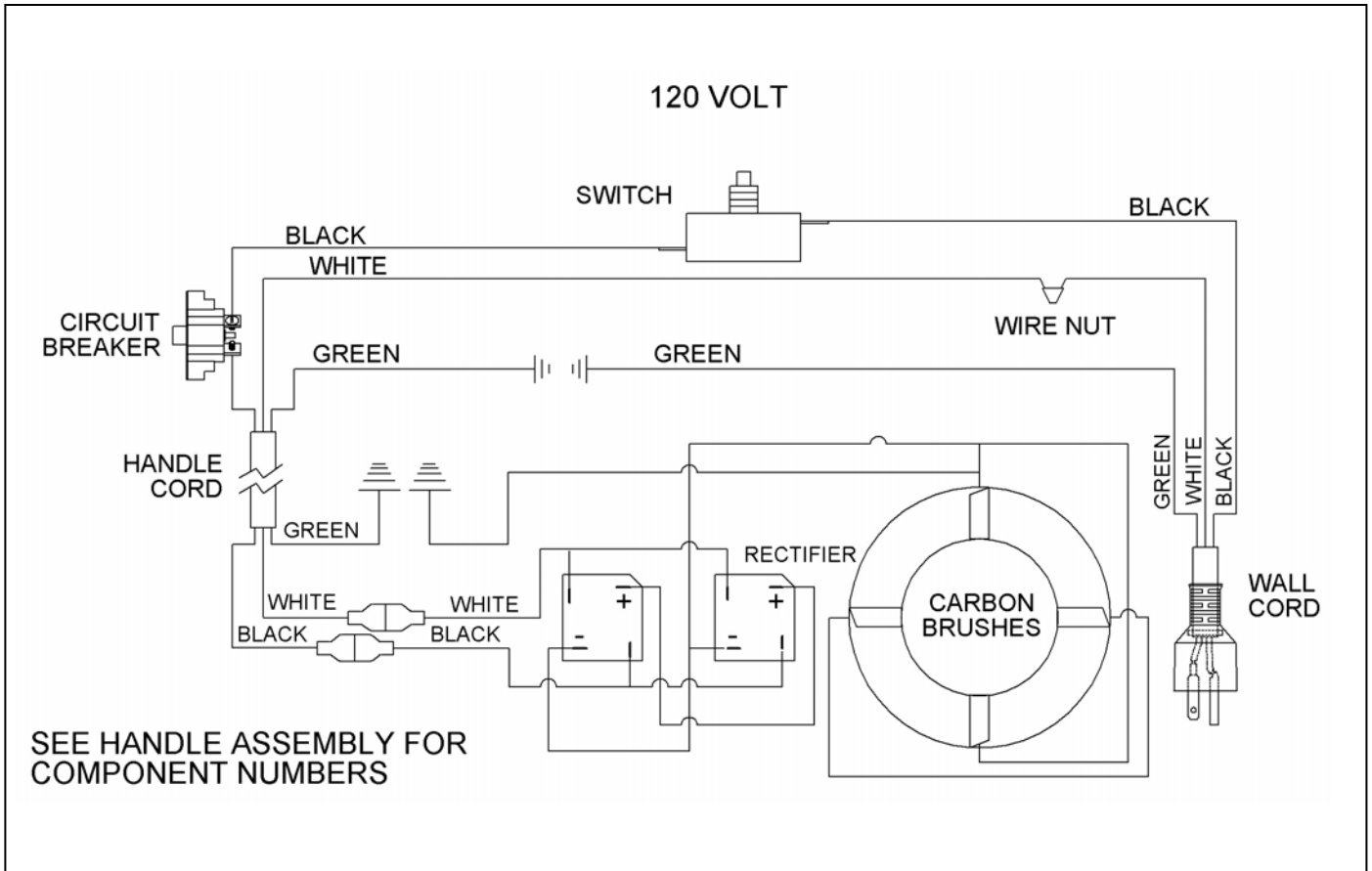
SAVE THESE INSTRUCTIONS



WIRE DIAGRAM – VARIABLE SPEED



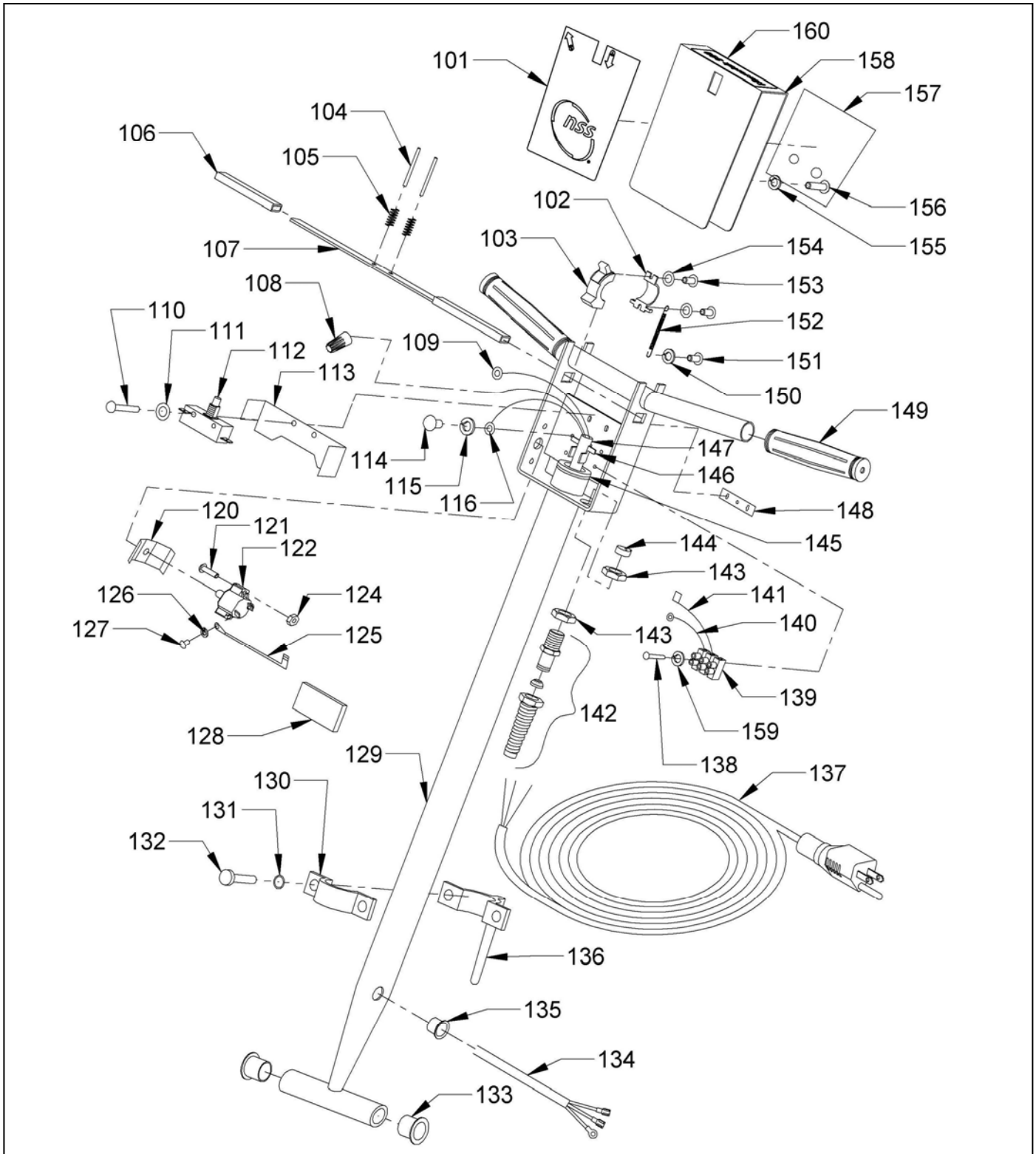
WIRE DIAGRAM – SINGLE SPEED



HANDLE ASSEMBLY

<u>ITEM</u>	<u>PART NO.</u>	<u>DESCRIPTION</u>	<u>QTY</u>
	5490189	HANDLE ASSEMBLY - 120 VOLT	1
	-----	HANDLE ASSEMBLY - 240 VOLT	1
101	5392311	LABEL - "SWITCH BOX - CIRCUIT BREAKER ICON"	1
102	0393511	LOCKOUT BRACKET	1
103	0393521	LOCK OUT	1
104	9120828	1/8 X 1 3/4 ROLL PIN – PACK OF 4	2
105	5390171	SWITCH LEVER SPRING	2
106	0393411	GRIP - SWITCH LEVER	2
107	0393401	SWITCH LEVER	1
108	5391321	WIRE NUT – ORANGE – 120 VOLT ONLY	1
109	0294031	#8 RING TERMINAL, INSULATED, 16-14 AWG	1
110	9120100	#6-32 X 1 ROUND HEAD PHILLIPS MACHINE SCREW – PACK OF 10	2
111	9120130	#6 EXTERNAL STAR LOCK WASHER – PACK OF 10	2
112	5390211	SWITCH	1
113	5390361	SWITCH INSULATOR	1
114	9120380	#10-24 X 3/8 ROUND HEAD PHILLIPS MACHINE SCREW – PACK OF 10	1
115	9120320	#10 SPLIT LOCK WASHER – PACK OF 10	1
116	0298981	#10 RING TERMINAL 14-16 AWG	1
120	5490441	INSULATION - BREAKER LEAD	1
121	9120430	#10-24 X 3/4 ROUND HEAD PHILLIPS MACHINE SCREW – PACK OF 10	2
122	5490401	20 AMP CIRCUITBREAKER - 120 VOLT ONLY	1
	5294581	8 AMP CIRCUITBREAKER - 240 VOLT ONLY	1
124	9120360	#10-24 HEX NUT WITH STAR LOCK WASHER – PACK OF 10	2
125	5490451	CIRCUIT BREAKER LEAD - 4"	1
126	9120200	#8 SPLIT LOCK WASHER – PACK OF 10	1
127	9120223	#8-32 X 1/4 PAN HEAD PHILLIPS MACHINE SCREW – PACK OF 5	1
128	5390511	FOAM PAD	1
129	5391891	HANDLE	1
130	5091636	CORD HOOK CLAMP	1
131	9120880	1/4 SPLIT LOCK WASHER – PACK OF 10	2
132	9121010	1/4-20 X 3/4 TRUSS HEAD PHILLIPS MACHINE SCREW – PACK OF 5	2
133	5090441	NYLON BUSHING	2
134	5490151	HANDLE CORD	1
135	5293131	GROMMET	1
136	5091682	CORD HOOK	1
137	5293791	CORD - 75 FEET - 14-3 - 120 VOLT ONLY	1
	0299671	SHUKO CORD - 75 FEET - 16-3 - 240 VOLT ONLY	1
138	9120080	#6-32 X 3/4 RND HD PHILLIPS MACHINE SCR - 240 VOLT ONLY-PK OF 10	1
139	5391931	TERMINAL BLOCK - 240 VOLT ONLY	1
140	5391921	WIRE - GROUND - 240 VOLT ONLY	1
141	5391911	WIRE - DEAD MAN - 240 VOLT ONLY	1
142	5091671	STRAIN RELIEF - 120 VOLT	1
	0299531	STRAIN RELIEF - 240 VOLT	1
143	5390261	STRAIN RELIEF NUT - 120 VOLT	2
	0891131	STRAIN RELIEF NUT - 240 VOLT	1
144	5092371	STRAIN RELIEF CORD CLAMP - 120 VOLT	1
	0299861	STRAIN RELIEF CORD CLAMP - 240 VOLT	1
145	9122110	3/8 I.D. X 1 1/2 O.D. X .065 THICK FENDER WASHER – PACK OF 10	1
146	5095501	CORD CLAMP	1
147	8791070	VINYL HOSE	0.18'
148	9120025	#6-32 DOUBLE HOLE SWITCH SPEED NUT – PACK OF 1	1
149	0393441	HANDLE GRIP	2
150	9120320	#10 SPLIT LOCK WASHER – PACK OF 10	1
151	9120380	#10-24 X 3/8 ROUND HEAD PHILLIPS MACHINE SCREW – PACK OF 10	1
152	0393381	SPRING	1
153	0393881	M3 X .05 X 8mm PAN HEAD PHILLIPS THREAD CUTTING SCREW	2
154	9120130	#6 EXTERNAL STAR LOCK WASHER – PACK OF 10	2

HANDLE ASSEMBLY

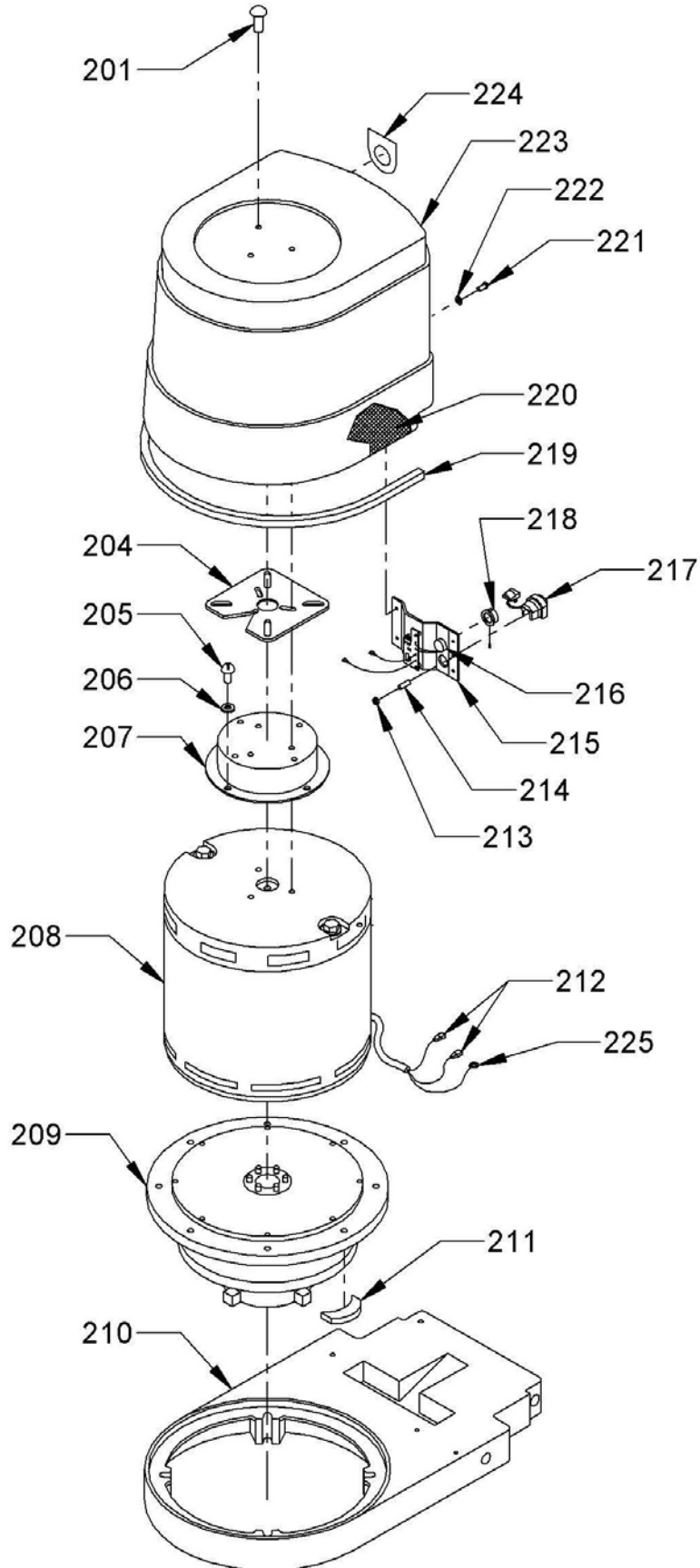


<u>ITEM</u>	<u>PART</u>	<u>DESCRIPTION</u>	<u>QTY</u>
155	9120320	#10 SPLIT LOCK WASHER – PACK OF 10	2
156	9120430	#10-24 X 3/4 ROUND HEAD PHILLIPS MACHINE SCREW – PACK OF 10	2
157	0190681	SAFETY LABEL	1
158	5391873	SWITCH BOX COVER	1
159	9120130	#6 EXTERNAL STAR LOCK WASHER – PACK OF 10 – 240 VOLT ONLY	1
160	5492661	MAVERICK 300 LABEL	1

UPPER BASE ASSEMBLY

<u>ITEM</u>	<u>PART</u>	<u>DESCRIPTION</u>	<u>QTY</u>
201	9120510	#10-24 X 1/2 TRUSS HEAD PHILLIPS MACHINE SCREW – PACK OF 10	3
204	5293951	CORK PAD	1
205	9120220	#8-32 X 3/8 ROUND HEAD PHILLIPS MACHINE SCREW – PACK OF 10	4
206	9120180	#8 INTERNAL STAR LOCK WASHER – PACK OF 10	4
207	5490113	STANDOFF	1
208	5491801	MOTOR AND GEAR - 120 VOLT - 1 1/2 H.P.	1
209	5095251	GEARBOX ONLY - 3 IDLER, 10:1 RATIO	1
	-----	MOTOR AND GEAR - 240 VOLT - 1 1/2 H.P.	1
208	-----	MOTOR ONLY - 240 VOLT - 1 1/2 H.P.	1
209	5095251	GEAR ONLY - 3 IDLER	1
210	5390013	BASE	1
211	5091691	RUBBER PAD	4
212	5490161	FULLY INSULATED FEMALE TERMINAL 14-16 AWG	2
213	9120690	#10-32 HEX NUT WITH STAR LOCK WASHER – PACK OF 10	2
214	9120650	#10-32 X 3/4 SET SCREW - CUP POINT – PACK OF 5	1
215	5490079	SPEED CONTROL - 120 VOLT - INCLUDES:	1
	5490061	SPEED CONTROL BRACKET	1
216	5490241	POTENTIOMETER	1
215	5490641	SPEED CONTROL - 240 VOLT - INCLUDES:	1
	5490061	SPEED CONTROL BRACKET	1
216	5490241	POTENTIOMETER	1
217	5293941	STRAIN RELIEF	1
218	5490131	KNOB WITH SET SCREW	1
219	8891080	3/16" X 5/16" NEOPRENE GASKET – CUT TO 24" LONG	2.0'
220	5490191	FELT - INSIDE COVER	1
221	9120740	#10-32 X 3/8 TRUSS HEAD PHILLIPS MACHINE SCREW – PACK OF 10	4
222	9120330	#10 EXTERNAL STAR LOCK WASHER – PACK OF 10	4
223	5490041	MOTOR COVER WITH BAFFLE	1
224	5392361	LABEL KIT - "SPEED CONTROL"	1
225	0298981	#10 RING TERMINAL 14-16 AWG	1

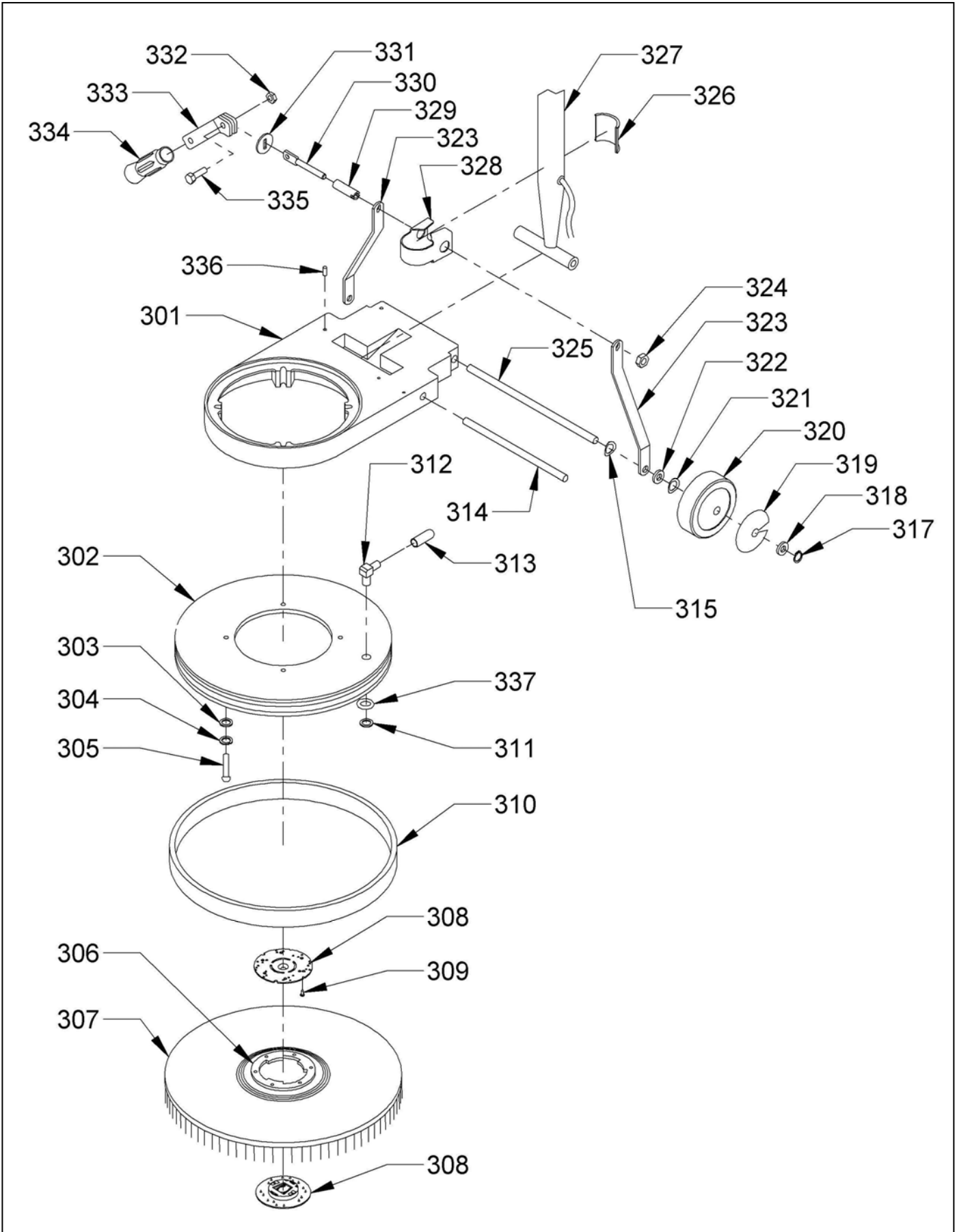
UPPER BASE ASSEMBLY



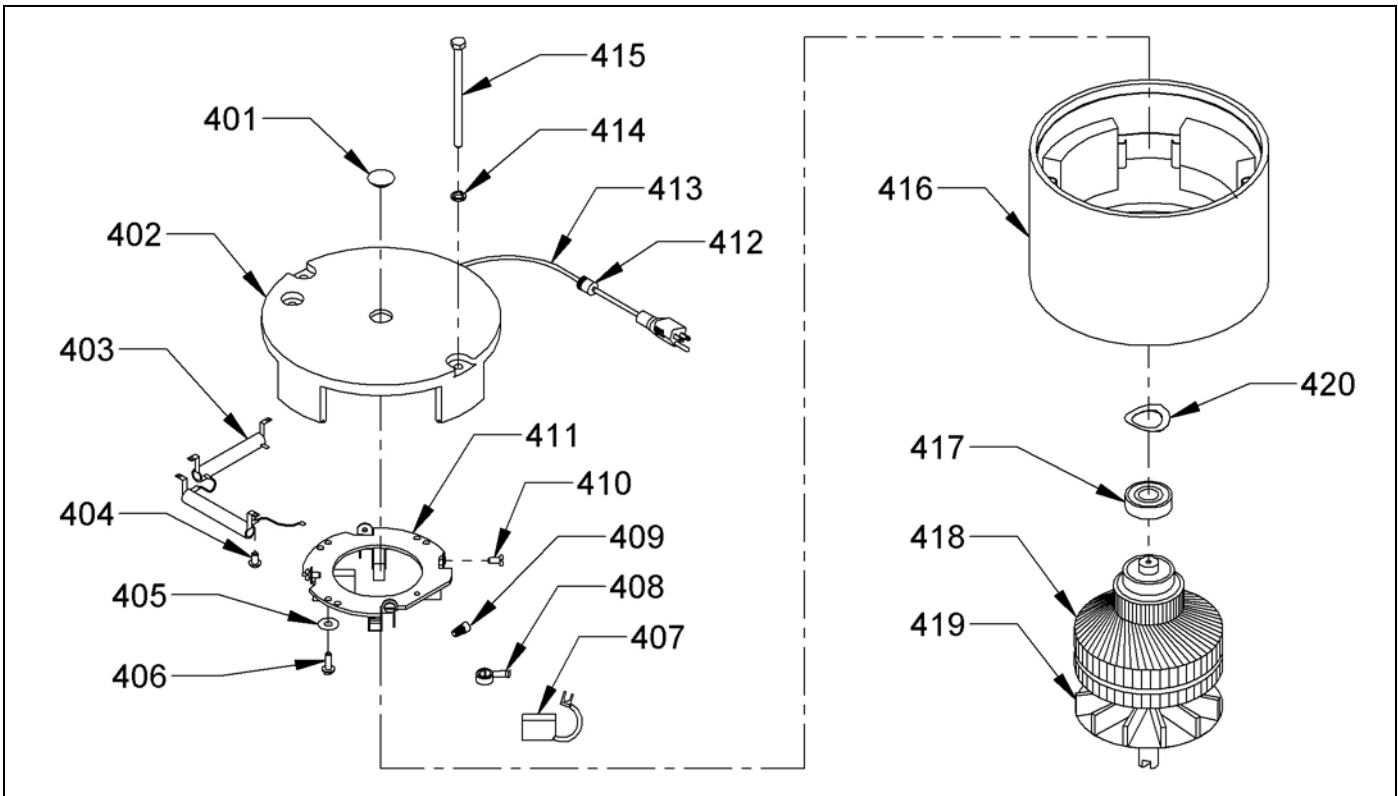
LOWER BASE ASSEMBLY

<u>ITEM</u>	<u>PART NO.</u>	<u>DESCRIPTION</u>	<u>QTY</u>
301	5390013	BASE	1
302	5090045	SKIRT - 17"	1
	5090065	SKIRT - 20"	1
303	9121390	11/32 I.D. X 11/16 O.D. X .051/.080 THICK FLAT WASHER (5/16) – PK OF 10	4
304	9121520	5/16 SPLIT LOCK WASHER – PACK OF 10	4
305	9121545	5/16-18 X 2 1/2 SOCKET HEAD CAP SCREW – PACK OF 1	4
306	2890971	PLASTIC CLUTCH PLATE - 5" DIAMETER - 6 HOLES – BLACK	1
307	2897551	17" HIGH SPEED PAD DRIVER	1
	2892551	20" HIGH SPEED PAD DRIVER	1
308	5990731	SPRING CLIP PAD HOLDER SET - INCLUDES:	1
309	9120140	#6 X 5/8 PAN HEAD PHILLIPS SHEET METAL SCREW – PACK OF 3	3
310	5090371	BUMPER - 17"	1
	5090401	BUMPER - 20"	1
311	5092641	RETAINING RING	1
312	5092630	90 DEGREE SOLUTION FEED TUBE	1
313	5092531	SOLUTION FEED TUBE CAP	1
314	5390496	HANDLE PIVOT BAR	1
315	9122705	1/2 I.D. X 3/4 O.D. X .01 THICK - 1 WAVE SPRING WASHER (1/2) – PK OF 2	2
317	9122496	RETAINING RING – PACK OF 8	2
318	9122465	.516 I.D. X .813 O.D. X .027/.030 THICK FLAT WASHER – PACK OF 2	2
319	5090491	LABEL KIT - "WHEEL COVER"	1
320	5092591	WHEEL - 5" - WITH PLASTIC BEARING	2
321	9122705	1/2 I.D. X 3/4 O.D. X .01 THICK - 1 WAVE SPRING WASHER (1/2) – PK OF 2	2
322	5390811	1/2 I.D. X 1 O.D. X .07 THICK FLAT WASHER – NYLATRON	2
323	5390026	HANDLE BRACE	2
324	9122140	3/8-16 HEX NUT WITH NY-LOK INSERT – PACK OF 5	1
325	5390136	AXLE	1
326	5390826	TUBE CLAMP SHOE	1
327	5391891	HANDLE	1
328	5390043	TUBE CLAMP	1
329	5390201	RUBBER TUBING	1
330	0393141	FLATTENED CLAMP BOLT	1
331	0393131	SLOTTED WASHER	1
332	9121450	5/16-18 HEX NUT WITH NYLOK INSERT – PACK OF 5	1
333	0393121	CLAMP LEVER	1
334	0393321	HANDLE GRIP	1
335	9121680	5/16-18 X 1 HEX BOLT – PACK OF 5	1
336	9120850	1/4-20 X 5/16 SET SCREW - KNURL POINT – PACK OF 2	1
337	5990331	O-RING	1

LOWER BASE ASSEMBLY

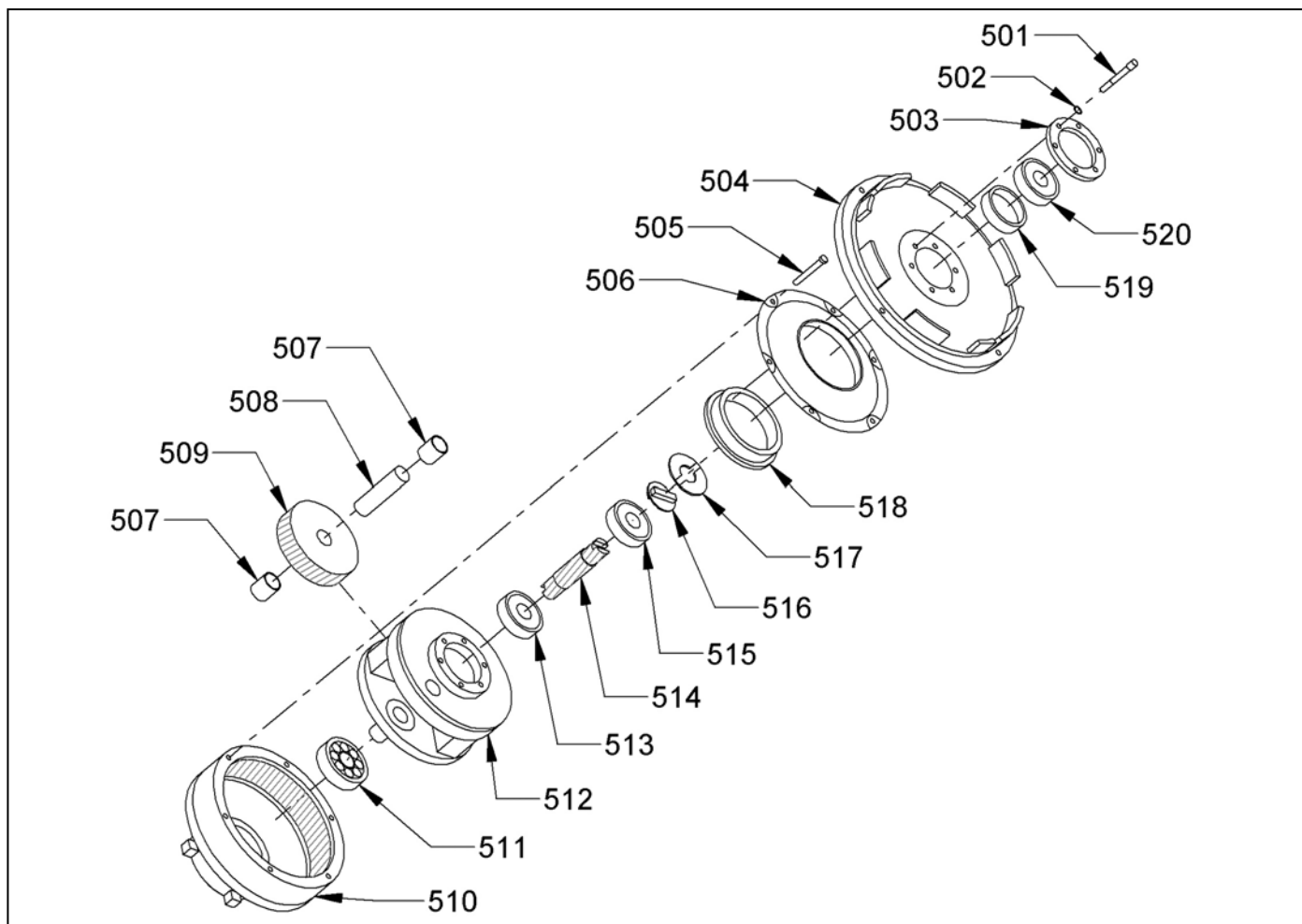


MOTOR ASSEMBLY



ITEM	PART NO.	DESCRIPTION	QTY.
401	—	PLUG - NOT AVAILABLE	1
402	5294401	TOP END BELL ASSEMBLY WITH PIGTAIL	1
	—	TOP END BELL ONLY	1
403	5492741	RECTIFIER - 60 AMP	2
404	9120260	#8-32 X 3/4 ROUND HEAD PHILLIPS MACHINE SCREW – PACK OF 10	1
405	9120330	#10 EXTERNAL STAR LOCK WASHER – PACK OF 10	2
406	9120771	#10-32 X 5/8 PAN HEAD PHILLIPS MACHINE SCREW – PACK OF 5	2
407	5294051	CARBON BRUSHES	4
408	5293881	BRUSH SPRING	4
409	5391321	WIRE NUT – ORANGE	1
410	9120560	#10-24 X 1/4 BINDING HEAD SLOT MACHINE SCREW – BRASS	4
411	5490421	BRUSH RING ASSEMBLY WITH DUAL RECTIFIERS	1
412	5293941	HEYCO STRAIN RELIEF	1
413	5990511	CORD	1
414	9120880	1/4 SPLIT LOCK WASHER – PACK OF 10	2
415	5492801	1/4-20 X 7 HEX WASHER HEAD THRU BOLT	2
416	—	FRAME WITH MAGNETS	1
417	5092041	BEARING – TOP	1
418	—	ARMATURE AND VENT FAN ASSEMBLY - 120 VOLT	1
	5294741	ARMATURE AND VENT FAN ASSEMBLY - 240 VOLT	1
419	4491731	VENT FAN	1
420	9123105	1 3/16 I.D. X 1 1/2 O.D. X .018 THK - 2 WAVE SPRING WASHER (1 3/16) - PK 5	2

GEAR BOX ASSEMBLY



<u>ITEM</u>	<u>PART NO.</u>	<u>DESCRIPTION</u>	<u>QTY.</u>
501	9120774	#10-32 X 1 3/16 SOCKET HEAD CAP SCREW – PACK OF 1	6
502	9120495	#10 INTERNAL STAR LOCK WASHER – PACK OF 10	6
503	5391021	BEARING RETAINER PLATE	1
504	5391101	MOTOR END BELL	1
505	9120430	#10-24 X 3/4 ROUND HEAD MACHINE SCREW – PACK OF 10	6
506	—	GEAR HOUSING COVER	1
507	—	IDLER SHAFT BEARING	6
508	5391181	IDLER SHAFT	3
509	5391191	IDLER GEAR	3
510	—	GEAR HOUSING	1
511	5391201	LOWER BEARING	1
512	—	3 IDLER CAGE	1
513	5391031	BEARING	3
514	5391071	PINION - 13 TEETH	1
515	5391031	BEARING	3
516	5095301	ODUM COUPLING	1
517	5391251	SHAFT WASHER	1
518	5391141	BEARING - GEAR HOUSING	1
519	5391041	BEARING SPACER	1
520	5391031	BEARING	3

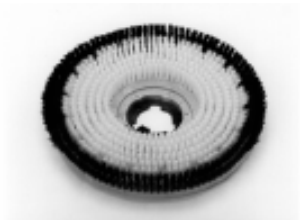
ACCESSORIES



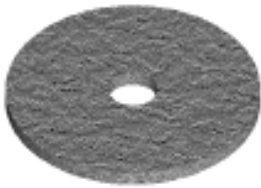
2890101 PLASTIC CLUTCH PLATE - 5" DIAMETER - 6 HOLES
 2890981 ALUMINUM CLUTCH PLATE - 4" DIAMETER - 3 HOLES
 2890991 ALUMINUM CLUTCH PLATE - 5" DIAMETER - 6 HOLES
 2893001 PLASTIC CLUTCH PLATE - 4" DIAMETER - 3 HOLES



2897211 17" POLY BACK TUFTED PAD DRIVER
 2897601 17" STRUCTURAL FOAM PAD DRIVER
 2897201 17" POLY BACK NYLON FILL SCRUB BRUSH - LIGHT TO MEDIUM SCRUB
 2897711 17" POLY BACK NYLON GRIT FILL SCRUB BRUSH - HEAVY CONCRETE
 2897821 17" POLY BACK NYLON - SOFT SCRUB BRUSH - CARPET ONLY
 2897901 17" POLY BACK SCRUB GRIT BRUSH - MILD TO MEDIUM SCRUB



2892211 20" POLY BACK TUFTED PAD DRIVER
 2892601 20" STRUCTURAL FOAM PAD DRIVER
 2892201 20" POLY BACK NYLON FILL SCRUB BRUSH - LIGHT TO MEDIUM SCRUB
 2892651 20" POLY BACK NYLON FILL SCRUB BRUSH - WITH GUIDE FOR CARPET SHAMPOOING
 2892711 20" POLY BACK NYLON GRIT FILL SCRUB BRUSH - HEAVY CONCRETE
 2892031 20" PLASTIC BACK BASSINE SCRUB BRUSH - GENERAL SCRUB
 2892701 20" POLY BRUSH - SHOWER FEED - STANDARD CARPET SCRUB
 2892901 20" POLY BACK SCRUB GRIT BRUSH - MILD TO MEDIUM SCRUB



NOTE: ALL PADS COME 5 PADS PER CASE
 7991751 17" LITE BLUE POLISH/BURNISH PAD - SOFT FINISH
 7991741 17" UHS CLEAN BUFF PAD - REMOVE SCUFF MARKS NOT FINISH
 7991731 17" BLUE SCRUB PAD - TOP SCRUB AND LIGHT FINISH REMOVAL
 7991721 17" GREEN SCRUB PAD - HEAVY FINISH REMOVAL
 7991701 17" BLACK STRIP PAD - REMOVES FINISH COMPLETELY

7992051 20" LITE BLUE POLISH/BURNISH PAD - SOFT FINISH
 7992041 20" UHS CLEAN BUFF PAD - REMOVE SCUFF MARKS NOT FINISH
 7992031 20" BLUE SCRUB PAD - TOP SCRUB AND LIGHT FINISH REMOVAL
 7992021 20" GREEN SCRUB PAD - HEAVY FINISH REMOVAL
 7992001 20" BLACK STRIP PAD - REMOVES FINISH COMPLETELY
 7992011 20" BROWN STRIP PAD - REMOVES FINISH COMPLETELY

TWISTER PADS

7991801	17" TWISTER RED PAD	7992141	20" TWISTER RED PAD
7991791	17" TWISTER WHITE PAD	7992131	20" TWISTER WHITE PAD
7991771	17" TWISTER YELLOW PAD	7992121	20" TWISTER YELLOW PAD
7991761	17" TWISTER GREEN PAD	7992101	20" TWISTER GREEN PAD



5094771 DELUXE SOLUTION TANK - 3.5 GALLON WITH BRASS VALVES



NSS® Enterprises, Inc.

3115 Frenchmens Road
 Toledo, Ohio 43607
 PHONE (419) 531-2121
 FAX (419) 531-3761
mailus@nss.com
www.nss.com