

Buy a Complete Consist and Save!

For decades there was no finer way to travel than a railroad's flagship streamliner, and these great trains can be part of your HO operations in minutes with these matched sets of Walther's Mainline passenger cars! Available only while supplies last, don't be left at the station, order yours now!

Alaska Railroad 4-Car Set

A \$139.92 value - now just \$69.98



910-B30010 ARR 4-Car Set

Includes one each:
 910-30010 85' Budd Large-Window Coach
 910-30160 85' Budd Diner
 910-30206 85' Budd Small-Window Coach
 910-30360 85' Budd Observation

Canadian National 6-Car Set

A \$209.88 value - now just \$99.98



910-B30011 CN 6-Car Set

Includes one each:
 910-30011 85' Budd Large-Window Coach
 910-30060 85' Budd Baggage-Lounge
 910-30110 85' Budd 10-6 Sleeper
 910-30161 85' Budd Diner
 910-30310 85' Budd Baggage-Railway Post Office
 910-30361 85' Budd Observation

Chicago, Burlington & Quincy 7-Car Set

A \$244.86 value - now just \$121.98!



910-B30003 CB&Q 7-Car Set

Includes:
 Two 910-30003 85' Budd Large-Window Coaches
 910-30053 85' Budd Baggage-Lounge
 910-30103 85' Budd 10-6 Sleeper
 910-30153 85' Budd Diner
 910-30303 85' Budd Baggage - Railway Post Office
 910-30353 85' Budd Observation

Add more realism with these special Accessory Sets

- All parts needed to finish one car
- Use with any Walther's Mainline passenger car

**SO MANY PRODUCTS
SO LITTLE SPACE!**

FIND MORE ONLINE NOW!

1. Go to www.walthers.com/monthly-flyer
2. Click **View Flyer Online**
3. **Page through, shop, enjoy!**

Passenger Car Exterior Detailing Kit

Normally \$9.98 - now just \$8.98!

- Durable formed stainless steel grab irons
- Body-mounted coupler boxes with standard swinging drawbar, bushing and cover for improved operation on 24" & larger curves
- Illustrated instructions



910-200

Passenger Car LED Interior Lighting Kit

- Assembled LED light bar
- Die-cast 41-N-11 trucks with turned metal 36" wheels - operates on 18" radius curves
- Body-mounted coupler boxes with standard swinging drawbar, bushing and cover for operation on 18" & larger curves
- Four electrical wipers
- Left and right interior electrical contacts
- Mounting block
- Illustrated instructions



910-220 \$29.98

PASSENGER CAR SALE

www.walthers.com/products/passenger-car-sale-mainline



Here are some great new items from our valued manufacturer partners.

To shop by Manufacturer, visit walthers.com/manufacturer-name and select your favorite manufacturer. Or, visit our New Product Center at walthers.com to see everything that's new.



HO 36' Double-Sheathed Wood Boxcar, Steel Roof, Ends, Straight Underframe - Kit

Accurail.
112-1157 Chicago Great Western #27958 (Boxcar Red)
112-1158 Grand Trunk #107129 (Boxcar Red)
112-1406 N&W #60982 (Boxcar Red)
Price: \$17.98



HO AAR 50' Riveted-Side Double-Door Boxcar - Kit

Accurail.
112-5239 IC Gulf #527308 (orange, black, white)
Price: \$17.98



HO 50' Plug-Door Boxcar

Atlas.
Fruit Growers Express (yellow, silver, MON Logo)
150-20004639 #90261
150-20004640 #90268
150-20004641 #90270
Price: \$32.95



HO Postwar 50' Double-Door Boxcar - Master®

Atlas.
GTW (Boxcar Red, green, Maple Leaf Logo)
150-20004415 #596431
KCS (Boxcar Red)
150-20004416 #20922
150-20004417 #20958
Wabash NJ&I (Boxcar Red, Flag Logo)
150-20004423 #3331
150-20004424 #3376
Price: \$39.95



HO Pullman-Standard PS-1 40' Boxcar w/6' Door

Kadee.
380-4321 Richmond, Fredericksburg & Potomac #2878 (blue, Billboard Lettering, Map Logo)
Price: \$39.95



HO PS-1 50' Boxcar w/9' Youngstown Door

Kadee.
380-6379 D&H #50058 ("I Love New York" Scheme, blue, white, red)
Price: \$43.95



HO ACF 11,000-Gallon Tank Car

Kadee.
380-9014 Mathieson Chemicals SHPX #2569 (black)
380-9015 Mathieson Chemicals SHPX #2570 (black)
Price: \$44.95



HO 5 Dogs and 2 Doghouses

Busch.
189-1197
Price: \$20.99



HO Unpainted Figures and Accessories

Preiser.
590-16361 pkg(33)
Price: \$21.99



HO Leisure Time at the Lake w/Small Boat

Preiser.
590-10692 pkg(9)
Price: \$22.99



HO 1961 Chevrolet Impala Convertible - Assembled

Oxford Diecast.
553-87C161003 White, Roman Red
Price: \$10.95



HO 40' Dual-Axle Grain Trailer - Assembled

Trucks n Stuff.
734-95204 White, Red
Price: \$14.99



HO Freightliner Cascadia Tractor with 2 Dry Van Trailers - Assembled

Trucks n Stuff.
734-95181 FedEx (white, purple, red)
Price: \$19.99



HO Freightliner Cascadia Tractor with Grain Trailer - Assembled

Trucks n Stuff.
734-95198 Red Tractor, White Trailer
Price: \$21.99



HO 33' 2-Bay Offset-Side Hopper

Micro Trains.
489-5500530 CR #404138
Price: \$26.90



HO 11,000-Gallon Tank Car with Platform - Master Atlas.

Texas Natural Gasoline Corp. SHPX (black, white)
150-50003752 #3550
150-50003753 #3562
Price: \$32.95



HO Park Place

Lunde Studios.
396-13 Kit - 1-11/16 x 2-13/16 x 5-1/8"
Price: \$54.95



HO Blair Trust

Lunde Studios.
396-14 Kit - 1-11/16 x 2-13/16 x 6-1/8"
Price: \$59.95



HO Children in the Snow

Noch.
528-36819 6 Kids, 4 Sleds, Snowman
Price: \$17.99



N Christmas Market
Noch.
528-36926 pkg(6)
Price: \$17.99



G 2-Axle Passenger Car
LGB.
426-36018 Christmas
2018 (green, white)
Price: \$159.99



G 2-Axle Steel Boxcar
LGB.
426-40501 LGB 50th
Anniversary (red, 1968-
78 Model Graphics)
Price: \$149.99



G 2-Axle Steel Boxcar
LGB.
426-40502 LGB 50th
Anniversary (red, 1978-
88 Model Graphics)
Price: \$149.99



G 2-Axle Steel Boxcar
LGB.
426-40503 LGB 50th
Anniversary (red, 1988-
98 Model Graphics)
Price: \$149.99



G 2-Axle Steel Boxcar
LGB.
426-40504 LGB 50th
Anniversary (red, 1998-
2008 Model Graphics)
Price: \$149.99



G 2-Axle Steel Boxcar
LGB.
426-40505 LGB 50th
Anniversary (red, 2008-
2018 Model Graphics)
Price: \$149.99



**HO Trees with Bagged
Roots**
Busch.
189-1275 pkg(8)
Price: \$19.99



**HO 8 Tree Stumps,
2 Chainsaws and
Gas Can Set**
Busch.
189-7770
Price: \$8.99



HO Fir Trees pkg(30)
Busch.
189-9778 1-9/16 to
4-5/16" Tall
Price: \$26.99



**HO Fir Trees with Roots
pkg(24)**
Busch.
189-9779 1-9/16 to
5-5/16" Tall
Price: \$30.99



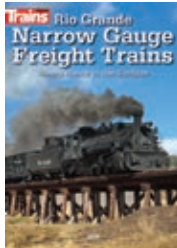
**N 16-Stall Asphalt
Parking Lot with Roadway
and 2 Audi Cars**
Busch.
189-9789 With 1-9/16 x
39-3/8" 4cm x 1m Road
Price: \$22.99



**Grass
Tufts**
Noch.
528-7127
Light and
Dark Green
1/4" 6mm
Fibers,
pkg(104)
Price: \$17.99



Enclosed Exhaust Vents
Bar Mills.
171-4039 pkg(2)
Price: \$7.49



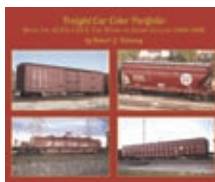
**Rio Grande Narrow Gauge
Freight Trains DVD**
Kalmbach.
400-15344 1 Hour,
15 minutes
Price: \$24.99



**Airbrushing Techniques:
Getting Started**
Kalmbach.
400-15347 1 Hour,
30 Minutes
Price: \$12.99



Build a Toy Train Layout
Kalmbach.
400-15348 2 Hours,
15 Minutes
Price: \$12.99



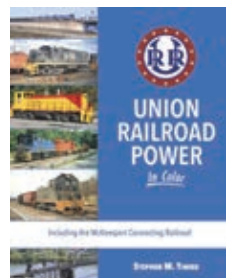
Freight Car Color Portfolio
Morning Sun.
484-6336 Book 4: ACFX-
CSXT (Soft Cover)
Price: \$39.95



**American Flyer Pocket
Price Guide 1946-2019**
Kalmbach.
400-108619 Softcover,
144 Pages
Price: \$15.99



**Lionel Trains Pocket Price
Guide 1901-2019**
Kalmbach.
400-108719 Softcover,
440 Pages
Price: \$21.99



**Union Railroad Power
In Color**
Morning Sun.
484-1651 Hardcover,
128 Pages
Price: \$59.95

Bargain Basement deals from your favorite manufacturers carried by Walthers. These products and prices won't last!

HO SCALE

Item #	Description	Reg. \$	Sale \$
6-24273	MLW M636 DC CP #4705	209.95	139.98
6-24278	MLW M636 w/Snd CP #4731	309.95	209.98
6-24281	MLW M636 DC CP #4722	209.95	139.98
6-24282	MLW M636 DC CP #4728	209.95	139.98
6-24284	MLW M636 w/Snd CP #4722	309.95	209.98
6-24289	MLW M636 w/Snd CP #4730	309.95	209.98
6-24290	MLW M636 DC CP #4738	209.95	139.98
6-24292	MLW M636 w/Snd CP #4738	309.95	209.98
6-24296	MLW M636 DC CP #4727	209.95	139.98
6-24299	MLW M636 w/Snd CP #4727	309.95	209.98
6-24307	MLW M636 w/Snd CP #4723	309.95	209.98
6-24308	MLW M636 DC CP #4717	209.95	139.98
6-24312	MLW M636 DC QCM #41	209.95	139.98
6-24313	MLW M636 DC QCM #83	209.95	139.98
6-60250	H21 4-Bay Hopp PRR #676251	17.95	11.98
6-60252	Gla 2-Bay Hopp PRR #141262	17.95	11.98
6-60255	Gla 2-Bay Hopp K&C #1714	17.95	11.98
150-10002371	GP38 DC NSHR #2004	169.95	109.98
150-10002372	GP38 DC NSHR #2012	169.95	109.98
150-10002373	GP38 DC NSHR #2017	169.95	109.98
150-10002376	GP40 DC Undec High Nose	169.95	109.98
150-10002400	GP38 DCC MMD #302	279.95	189.98
150-10002412	GP40 DCC Undec High Nose	279.95	189.98
150-10002416	GP40 DCC N&W #1329	279.95	189.98
150-10002418	GP40 DCC N&W #1374	279.95	189.98
150-20004334	FMC Box Car SRN #2203	39.95	26.98
150-20004335	FMC Box Car SRN #2223	39.95	26.98
150-20004336	FMC Box Car SRN #2250	39.95	26.98
150-20004337	FMC Box Car SRN #2252	39.95	26.98
150-20004341	FMC Box Car TOE #5050	39.95	26.98
160-13704	72' Hwt Coach NYC #854	109.00	72.98
160-16601	1860-1880 Coach RBBX #75	41.00	26.98
160-16602	Opn Excrsn w/Sts RBBX #142	47.00	30.98
160-16605	Flat w/Crate Load RBBX #119	42.00	27.98
160-17103	40' 3-Dm Tank Car Allegheny	29.00	18.98
160-17836	40' SD Tank Car Clark	29.00	18.98
160-18138	Evans All-Dr Box TPFX #5114	28.00	18.98
160-18403	Bobber Cab B&M	26.00	16.98
160-42233	Trk Cab & 2 Trlrs CP	66.00	43.98
160-50603	USRA 0-6-0 w/Tndr UP #4442	132.00	89.98
160-50902	2-8-4 Tndr w/Dcd PM #1218	269.00	179.98
160-52205	46-0 DCC Rdy T&P #316	299.00	199.98
160-63526	GP 40 SF #2964	95.00	62.98
160-71905	50'6" Gon MRL #40013	46.00	30.98
160-71910	50'6" Gon w/Ld Patapsco	46.00	30.98
161-85546	EMD SD70ACe T4 Ylw/Blk	87.99	58.98
175-30036	Barkas B 1000 Van Lt Blue	17.99	11.98
175-34319	Dodge A 100 Bus Hippie Blue	26.99	17.98
175-34356	Dodge A 100 Van WP	21.99	14.98
175-36700	MB O 309 Bus 70er-Jahre	22.99	14.98
175-47024	MB L 322 Erie Builders	21.99	14.98
189-50715	Smart Fortwo Coupe NYPD	25.99	16.98
221-32310	GMC TD 3610 Bus NYC 72nd	32.95	21.98
223-194735	MU Coach Pwd PC Sch A #2	229.98	149.98
223-4001090	Box Van Pelican Bread	13.98	8.98
223-483601	45' Cntrn YangMing #1 2/	31.98	20.98
223-483602	45' Cntrn YangMing #2 2/	31.98	20.98
223-483603	45' Cntrn Tropical #1 2/	31.98	20.98
223-488025	53' HC Cont FedEx #1 & 2 2/	29.98	19.98
223-488029	53' HC Cont Hub Red #1 2/	29.98	19.98
223-488030	53' HC Cont Hub Red #2 2/	29.98	19.98
223-488071	53' HC Cont CN #1 2/	35.98	23.98
223-488166	53' Rfr Cont Fresh #2 2/	29.98	19.98
223-94114	P54 Coach PRSI #6783	84.98	56.98
223-94706	72' Sline Bagg AMTK PhV	36.98	24.98
254-53	Flat w/Rotted Boards HON3	19.95	12.98
254-88	Tie Cart & Tools	12.95	8.98
265-2008	Jeep Truck	9.99	6.98
265-2116	Land Rover Safari	9.99	6.98
265-2119	Flat Bed Truck Thames	10.99	6.98
272-131001	Hot Air Balloon ARAL	61.99	40.98
272-161921	Laser-St Curve R218 4/	14.99	9.98
293-6020	USRA Tank Car w/54" Dm 6/	85.00	56.98
326-12669	Porsche 928 S4 Minikit	10.95	6.98
326-28266	Mercedes A Class Stn Wgn	21.50	13.98

HO SCALE

Item #	Description	Reg. \$	Sale \$
326-28646	Porsche 911 Carrera 4	21.50	13.98
326-5458	3-Axle Highboy Silver	17.55	11.98
326-76142	Gldhnr Equip Trailer	22.95	14.98
380-6920	50' Boxcar KDC #020	39.95	31.98
380-9012	ACF 11K Tank FTLX #207	44.95	35.98
437-6000	Wlsn Trlr w/Trp Blue	21.95	14.98
437-6001	Wlsn Trlr w/Trp Blk/Wht	27.95	18.98
437-6004	Wlsn Trlr w/Trp Dark Blue	21.95	14.98
437-6023	43' Wilson Trailer ADM	27.95	18.98
441-47064	SE Container Trans Car	69.99	55.98
455-393107	0-6-0T Swt DCC CP	174.98	119.98
455-414002	GP20 DC PRR	84.98	56.98
455-414007	GP-20 DC Conrail	84.98	56.98
507-8060046	5-Car Pass Set LV Smth	469.95	379.98
507-8060048	5-Car Pass Set PRR Smth	469.95	379.98
528-16458	Jawa 350 Automatic	16.99	10.98
528-17511	Scooter Drvr w/LEDs Wht	32.99	21.98
590-30468	Eor Wagon w/Horses/Driver	28.99	18.98
590-33261	VW T5 BRK Water Rescue	31.99	20.98
606-21003	Alco FA-2 DC B&O No #	225.00	179.98
606-21009	Alco FA-2 DC CN #9546	225.00	179.98
606-21014	Alco FA-2 DC CP #4045	225.00	179.98
606-21015	Alco FA-2 DC CP #4050	225.00	179.98
606-21016	Alco FA-2 DC CP #4087	225.00	179.98
606-21019	Alco FPA-2 DC CP #4094	225.00	179.98
606-21022	Alco FA-2 DC CP #4085	225.00	179.98
606-21023	Alco FA-2 DC CP #4091	225.00	179.98
606-21029	Alco FA-2 DC Erie #737-D	225.00	179.98
606-21031	Alco FA-2 DC Erie No #	225.00	179.98
606-21037	Alco FA-2 DC LV #586	225.00	179.98
606-21039	Alco FPA-2 DC LV #590	225.00	179.98
606-21040	Alco FPA-2 DC LV #594	225.00	179.98
606-21042	Alco FA-2 DC NYIC #1053	225.00	179.98
606-21515	Alco FA-2 DCC CP #4050	325.00	259.98
606-21516	Alco FA-2 DCC CP #4087	325.00	259.98
606-21538	Alco FA-2 DCC LV No #	325.00	259.98
629-32524	Evans Coil Car RTR CNW	42.95	33.98
734-2139V87167	53' Cntrn Knight Port&Rail	9.99	6.98
751-20004494	85' Flat CWMX #100559	34.95	22.98
751-20004495	85' Flat CWMX #100561	34.95	22.98
751-20004500	85' Flat Enviro #100534	34.95	22.98
751-20004501	85' Flat Enviro #100547	34.95	22.98
751-20004502	85' Flat Enviro #100549	34.95	22.98
751-20004506	85' Flat DSEX #7001	34.95	22.98
781-16504	Porsche Carrera Yellow	16.99	10.98
781-1813	40' Cntrns Maersk/Hap-Lyd	26.99	17.98
781-22602	Morris Mini-Minor White	17.99	11.98
781-22703	MB E-Class W 213 Brown	27.99	18.98
781-34503	Hanomag Flatbed Truck	19.99	12.98
781-37819	Heliodor Till and Drill	24.99	16.98
781-38999	Fendt Katana w/Corn Headr	47.99	31.98
781-43802	Flatbed Tipper	27.99	18.98
781-45601	MB Flatbed Road Train	36.99	24.98
781-50702	US Tractor Cab Blue/Stars	22.99	14.98
781-51902	Swap Body Truck	24.99	16.98
781-53202	Concrete Mixer Blue/White	22.99	14.98
781-5604	Passenger Vehicle Trailer	16.99	10.98
781-60128	VW Touareg Fire Brigade	26.99	17.98
781-60701	Fire Brigade - Ambulance	24.99	16.98
781-64606	Unimog U 20 Winter Srvc	28.99	18.98
781-80636	Lloyd Alexander TS Yellow	17.99	11.98
781-86399	Feuerwehr LF 16 (Msgirus)	35.99	23.98
785-5540	AutoScene Getaway Gangstr	33.99	22.98

N SCALE

Item #	Description	Reg. \$	Sale \$
6-37815	Cylnld Hopp French's #60927	19.95	12.98
6-37832	Cylnld Hopp CRDX #4503	19.95	12.98
6-37837	Cylnld Hopp TPW #17208	19.95	12.98
85-69358S	SD40-2 DCC/Snd FVWWr	249.95	199.98
150-40003096	RS 1 Susquehanna	119.95	79.98
150-40003137	GP35 Undec w/DB Ph1b	119.95	79.98
150-40003153	GP35 DCC Undec w/DB Ph1a	154.95	99.98
150-40003155	GP35 DCC Undec w/DB Ph1b	154.95	99.98
150-50003237	Trinity Cov Hop UNDEC	36.95	24.98

N SCALE

Item #	Description	Reg. \$	Sale \$
150-50003264	Trinity Cov Hop NS #292177	34.95	22.98
150-50003270	Trinity Cov Hop SCYX #3	34.95	22.98
150-50003274	Trinity Cov Hop SCYX #7	34.95	22.98
150-50003277	Trinity Cov Hop SCYX #10	34.95	22.98
150-50003279	Trinity Cov Hop SCYX #12	34.95	22.98
150-50003348	40' PS-1 Box MNS #1237	32.95	21.98
150-50003362	40' PS-1 Box NYS&W #401	32.95	21.98
150-50003428	FMC 5077 Box GMRC #611	24.95	16.98
150-50003429	FMC 5077 Box GMRC #618	24.95	16.98
150-50003443	FMC 5077 Box VTR #4088	24.95	16.98
150-50003446	FMC 5077 Box NVR #7707	24.95	16.98
150-50003509	NE-5 Caboose PC #19830	29.95	19.98
160-14252	85' SS Coach N&W	59.00	38.98
160-14352	72' SS Obser Car N&W	59.00	38.98
160-14451	72' SS Baggage Car PRR	49.00	32.98
160-17857	ACF 36'6" 10K Tnkr Clark	27.00	17.98
160-17864	ACF 36'6" 10K Tnkr UP	27.00	17.98
160-50598	0-6-0 USRA Switcher Unltr	99.00	65.98
160-51563	2-6-2 w/Tender CN #613	119.00	78.98
160-61085	Brill Trolley Christmas	65.00	42.98
160-61093	Brill Trolley Green	65.00	42.98
160-63753	EMD F7-A DCC NS	129.00	89.98
188-21190	Bay Wndw Cab CSX #16607	37.95	24.98
188-24320	Transfer Cab BOP #113932	37.95	24.98
188-25000	TranCbse w/RunBds Undec	36.95	24.98
223-1014273	40' Wood Sd Rfr Schlosser	16.98	10.98
223-40185	85' Pass Obs NYC	36.98	24.98
223-40349	85' Smth Pass Baggage IC	36.98	24.98
223-4053057	N 53Ft. Cont CP Rail	19.98	12.98
223-41353	Budd 85' Dome Car PRR	41.98	27.98
223-41516	Budd Round End Obs SP Day	41.98	27.98
223-443121	40' Reef Cont Trop #2	22.98	14.98
223-453011	53' HC Cont UNDEC 2/	16.98	10.98
223-453035	53' Cont FedEx #1 2/	19.98	12.98
223-453204	53' Cont CR England #2 2/	19.98	12.98
223-453214	53' Reef Cont Tiger #2	19.98	12.98
282-81817	7-Post Box SOO #18836	20.95	13.98
282-81819	7-Post Box WC #26349	20.95	13.98
282-836041	Ortrn 5Bay Hop CDSU #79005	24.95	16.98
282-836106	Ortrn 5Bay Hop MPS #1075	24.95	16.98
282-836112	Ortrn 5Bay Hop KMXC #80365	24.95	16.98
282-836113	Ortrn 5Bay Hop KMG #80382	24.95	16.98
282-850022	4750 Hopp BN #459596	26.95	17.98
282-850073	4750 3B Hop GACX #469709	26.95	17.98
282-852031	4740 3B Hop BNSF #433157	26.95	17.98
282-852032	4740 3B Hop BNSF #433183	26.95	17.98
282-852081	4750 Hopp IC #765029	26.95	17.98
282-852082	4750 Hopp IC #765255	26.95	17.98
282-852083	4750 Hopp IC #765268	26.95	17.98
282-854072	4750 Hopp MP/UP #705328	26.95	17.98
282-854073	4750 Hopp MP/UP #705332	26.95	17.98
381-1063516	AMTK PhilVb 4-Car Set B	110.00	72.98
381-1068011	Amfleet Pass Set AMTK 4/	125.00	82.98
381-1068702	Gallery Bkscs Set METX 3/	100.00	66.98
381-1373003	ACS64 Amtrak #648	150.00	99.98
381-1560945	Glyr BiLvl Cch VRE #V812	30.00	19.98
381-1762201	EMD F7-B UNDEC wo/SG	80.00	52.98
381-1768510	SD70ACe Hrtg PC/NS #1073	135.00	89.98
489-10800372	3-Bay Hopper BNSF #615587	25.30	19.98
489-13500070	70' Well Car KCS #9027	28.90	22.98
489-14000180	RPO N&W #95	32.90	25.98
489-18000050	50' Boxcar B&M 200 Yrs	28.90	22.98
489-9800091	50' Airslide Hop ATSF	29.95	23.98
489-9800092	50' Airslide Hop ATSF	29.95	23.98
489-9900180	3-Bay Hopp Old Forester	28.90	22.98
490-87638	4-4-0 Amer DC MKT	269.98	179.98
716-96700	Concord Coach Brass Kit	18.95	12.98
716-96701	Van Milk & Bread	15.95	10.98
716-96704	Dry Goods Van	15.95	10.98
716-96706	IHC Farm Wagon Kit	16.95	10.98
738-257998	Operating Bus System GMC	129.98	89.98
739-18051	IC Exp Car 1 Clss DB AG	23.99	19.98
739-18052	IC Exp Car 1 Clss DB AG	23.99	19.98
751-50003392	3560 Cvrhd Hopp SOU #98961	20.95	13.98
751-50003393	3560 Cvrhd Hopp SOU #99009	20.95	13.98
751-50003452	20' Cntrn AWIU-10000 #1	22.95	14.98
751-50003453	20' Cntrn AWIU-10000 #2	22.95	14.98
751-50003454	20' Cntrn AWIU Sajo #1	22.95	14.98
751-50003455	20' Cntrn AWIU Sajo #2	22.95	14.98
751-50003456	20' Cntrn OVAU Set #1	22.95	14.98
751-50003457	20' Cntrn OVAU Set #2	22.95	14.98
751-50003458	20' Cntrn USWX Dbl #1	22.95	14.98
751-50003459	20' Cntrn USWX Dbl #2	22.95	14.98
751-50003477	85' Trash Flt CWMX #100559	27.95	18.98

N SCALE

Item #	Description	Reg. \$	Sale \$
751-50003478	85' Trash Flt CWMX #100561	27.95	18.98
751-50003479	85' Trash Flt CWMX #100570	27.95	18.98
751-50003480	85' Trash Flt HESX #42	27.95	18.98
751-50003481	85' Trash Flt HESX #50	27.95	18.98
751-50003482	85' Trash Flt HESX #60	27.95	18.98
751-50003483	85' Trash Flt ESIX #100534	27.95	18.98
751-50003484	85' Trash Flt ESIX #100547	27.95	18.98
751-50003485	85' Trash Flt ESIX #100549	27.95	18.98
751-50003486	85' Trash Flt GATX #638027	27.95	18.98
751-50003487	85' Trash Flt GATX #638070	27.95	18.98
751-50003488	85' Trash Flt GATX #638108	27.95	18.98
751-50003489	85' Trash Flt DSEX #7001	27.95	18.98
751-50003490	85' Trash Flt DSEX #7169	27.95	18.98
751-50003492	85' Trash Flt USWX #20271	27.95	18.98
751-50003493	85' Trash Flt USWX #20285	27.95	18.98
751-50003494	85' Trash Flt USWX #20310	27.95	18.98
751-50003610	2-Bay Hopp Sthdwn #9814	19.95	12.98
751-50003633	50' DD Box MIGN #100001	22.95	14.98
751-50003640	50' DD Box WAB #3376	22.95	14.98
805-383	60' Bagg Exp CN #8778	36.59	23.98
805-384	60' Bagg Exp CN #8785	36.59	23.98
805-385	60' Bagg Exp CN #8790	36.59	23.98
805-386	60' Bagg Exp CN #8793	36.59	23.98
805-387	60' Bagg Exp DLW #2037	36.59	23.98
805-388	60' Bagg Exp DLW #2043	36.59	23.98
805-389	60' Bagg Exp DLW #2072	36.59	23.98
805-390	60' Bagg Exp DLW #2095	36.59	23.98
805-392	60' Bagg Exp SOU #6451	36.59	23.98
805-393	60' Bagg Exp SOU #6453	36.59	23.98
805-394	60' Bagg Exp SOU #314	36.59	23.98
805-395	60' Bagg Exp SOU #317	36.59	23.98
805-396	60' Bagg Exp MOW SOU #9000	36.59	23.98
805-398	64' Magazine Car IC #673	36.59	23.98
805-402	60' Bagg Exp SP #6201	36.59	23.98
805-403	60' Bagg Exp SP #6349	36.59	23.98
805-404	60' Bagg Exp SP #6206	36.59	23.98
805-405	60' Bagg Exp SP #6429	36.59	23.98
805-407	60' Bagg Exp UP #1830	36.59	23.98
805-408	60' Bagg Exp UP #1837	36.59	23.98
805-409	60' Bagg Exp UP #1845	36.59	23.98
805-410	60' Bagg Exp UP #1849	36.59	23.98

Z SCALE

Item #	Description	Reg. \$	Sale \$
489-50100281	40' Std Box NP #38268	26.50	20.98
489-50300172	40' Boxcar NP #1034	27.80	21.98
489-50300182	40' Boxcar RI #47440	24.95	19.98
489-50600351	50' Boxcar NYC #71790	25.90	20.98
489-50600361	50' DD Box C&O #27875	24.90	19.98
489-53100272	2-Bay Cvrhd Hopp SP #402280	25.95	20.98
489-55600010	Hwt Business Car Kay See	29.95	23.98

G SCALE

Item #	Description	Reg. \$	Sale \$
160-96253	Speeder MOW Orange	139.00	89.98
426-24772	Porter 0-4-0T Lehmann Sgr	399.99	339.98

O SCALE

Item #	Description	Reg. \$	Sale \$
151-2001319	60' Baggage 3-RI B&O	104.95	83.98
151-2001419	60' RPO 3-RI B&O	104.95	83.98
151-2002231	40' Slide R Box 3RI WP	64.95	51.98
151-3001223	6-Bay Cyl Hopp 3RI BN	72.95	57.98
151-3002620	40' Boxcar 2-Rail SOO	82.95	65.98
434-682423	HiCube Boxcar C&N	99.99	79.98
434-682922	Scar HiCube Boxcar	79.99	63.98
434-683783	Rosie the Riveter Boxcar	84.99	67.98
434-684128	PS2CD Cov Hopper TLDX	89.99	71.98
434-684165	Log Dscnct Trn Bxcr Rfd 4/	159.99	129.98
434-684378	Santas Milk Car w/Platfrm	179.99	139.98
434-684553	Log Disc Xmas 4/ A	159.99	109.98
434-684554	Log Disc Xmas 4/ B	159.99	109.98
434-684612	Boxcar Coca Cola Pin-Up	84.99	67.98
507-3050071	Billy Ray's Bar-B-Q Tlr	39.95	31.98
507-3050072	Roscoe's Fireworks Tlr	39.95	31.98

1/50 SCALE

Item #	Description	Reg. \$	Sale \$
161-85525	Cat 242D Skid Steer Loadr	43.99	28.98
161-85922	Cat 568 LL Log Loader	147.99	99.98
161-85923	Cat 568 GF Road Builder	147.99	99.98

**FOR ALL ITEMS IN RED.**

WARNING: Cancer and Reproductive Harm - www.P65Warnings.ca.gov. See page 27.

EMD F7 A&B Units

HO SCALE

A-B SETS – SoundTraxx® Sound & DCC \$369.98 ea Standard DC \$249.98 ea
 MATCHING A UNITS – SoundTraxx® Sound & DCC \$199.98 ea Standard DC \$129.98 ea



FIRST SERIES NOW IN STOCK!

- All-new tooling from roof to rails!
- Nicely priced power for freight & passenger service
- Limited edition - one time run of these roadnumbers!
- Used from 1949 to the 1990s - many preserved today
- Single or dual headlights to match prototypes
- Factory-installed handrails
- Mars light on A units as appropriate
- Steam generator details as appropriate
- Same powerful drive as Walther's Proto® locos

Santa Fe - Freight Scheme



• Based on dual-service 200-class units
 910-19901 #254L, #254A SoundTraxx Sound
~~910-19902 #257L, #257A SoundTraxx Sound~~
 910-9902 #255L, #255A Standard DC

Matching A Units

910-19903 #257C SoundTraxx Sound
 910-19904 #258C SoundTraxx Sound
 910-9903 #256C Standard DC

Canadian Pacific - 1950s Scheme



910-19905 #4099, #4437 SoundTraxx Sound
~~910-19906 #4101, #4459 SoundTraxx Sound~~
 910-9904 #4101, #4443 Standard DC

Matching A Units

910-19907 #4100 SoundTraxx Sound
 910-19908 #4102 SoundTraxx Sound
 910-9905 #4103 Standard DC

Chicago, Burlington & Quincy



910-19909 #167A, #167B SoundTraxx Sound
 910-19910 #169A, #169B SoundTraxx Sound
~~910-9906 #168A, #168B Standard DC~~

Matching A Units

910-19911 #167C SoundTraxx Sound
 910-19912 #69C SoundTraxx Sound
~~910-9907 #168C Standard DC~~

Pennsylvania - Brunswick Green



910-19913 #9671, #9671B SoundTraxx Sound
 910-19914 #9676, #9676B SoundTraxx Sound
 910-9908 #9668, 9668B Standard DC

Matching A Units

910-19915 #9649 SoundTraxx Sound
 910-19916 #9650 SoundTraxx Sound
 910-9909 #9648 Standard DC

Southern Pacific† - Black Widow



~~910-19917 #6199, #8097 SoundTraxx Sound~~
~~910-19918 #6217, #8299 SoundTraxx Sound~~
~~910-9910 #6401, #8100 Standard DC~~

Matching A Units

910-19919 #6384 SoundTraxx Sound
 910-19920 #6401 SoundTraxx Sound
~~910-9911 #8199 Standard DC~~

Southern Railway



~~910-19921 #6715, #6172 SoundTraxx Sound~~
 910-19922 #6119, #6178 SoundTraxx Sound
 910-9912 #6714, #6180 Standard DC

Matching A Units

910-19923 #6714 SoundTraxx Sound
 910-19924 #6718 SoundTraxx Sound
 910-9913 #6719 Standard DC

ITEMS CROSSED OUT IN RED ARE SOLD OUT AT WALTHERS – SEE YOUR LOCAL HOBBY SHOP

Alaska Railroad, Milwaukee Road, Northern Pacific, VIA and Wabash coming soon!
 New Second Series with ESU Sound & DCC – Order Now for November 2018 Delivery!

HO SCALE | LOCOMOTIVES



Limited Quantity Available
NEW HO EMD F7A
w/36" Dynamic Fan - Standard DC
 WalthersProto®. Fully assembled and ready for service, these superb replicas feature railroad-specific details and a powerful WalthersProto drive.
ATSF (Warbonnet, red, silver), 1956 Super Chief, 1954 El Capitan
 920-47902 #302L
 920-47903 #303L
Price: \$179.98



Limited Quantity Available
NEW HO EMD F7A - Tsunami®
Sound & DCC
 WalthersProto. Based on ex-Northern Pacific units from the mid-1970s to retirement, this layout-ready replica is highly detailed and equipped with Tsunami® sound for DCC or DC operation.
BN (Cascade Green, white, black)
 920-40906 #730
CN (red-orange, black, white)
 920-40910 #9168
 920-40911 #9169
C&O (Low Bow Wave scheme, blue, yellow)
 920-40915 #7051
Price: \$279.98



Limited Quantity Available
NEW HO EMD F7A-B Set -
Tsunami® Sound & DCC
 WalthersProto. Add classic power to your operations with these superb replicas featuring railroad-specific details, sharp paint and lettering, high-efficiency can motor, helical gears with 14:1 ratio for smooth, ultra-quiet running and Proto MAX™ metal knuckle couplers.
CN (red-orange, black, white)
 920-40908 #9155, 9192
 920-40909 #9159, 9195
Price: \$549.98

**Union Pacific licensed product*



Limited Quantity Available
NEW HO EMD F7B - Tsunami®
Sound & DCC
 WalthersProto. Add classic power to your operations with these superb replicas featuring railroad-specific details, sharp paint and lettering, high-efficiency can motor, helical gears with 14:1 ratio for smooth, ultra-quiet running and Proto MAX metal knuckle couplers.
UP* (Armour Yellow, gray, red)
 920-40918 #1468C
 920-40919 #1472C
Price: \$279.98



Limited Quantity Available
NEW HO EMD GP35 Phase II -
Standard DC
 WalthersProto. Based on Phase II units in service from 1965 to present, models feature road-specific details, 5-pole skew-wound high-torque high-efficiency torque motor and helical gears.
Chessie System C&O (yellow, blue, vermilion)
 920-49165 #3574
 920-49166 #3582
CR (blue, white)
 920-49167 #3682
 920-49168 #3690
Price: \$199.98



Limited Quantity Available
NEW HO EMD GP35 Phase II -
SoundTraxx® Tsunami® Sound & DCC
 WalthersProto. Based on Phase II units in service from 1965 to present, models feature road-specific details, 5-pole skew-wound high-torque high-efficiency torque motor and helical gears.
ATSF (Warbonnet, yellow, blue)
 920-42164 #2907
Chessie System C&O (yellow, blue, vermilion)
 920-42165 #3537
 920-42166 #3584
CR (blue, white)
 920-42167 #3677
 920-42168 #3686
RI (maroon, yellow)
 920-42172 #332
SP* (red, gray, white w/SP* on Nose)
 920-42174 #6342
Price: \$299.98
GM&O (white, black)
 920-42170 #640
Price: \$329.98



Limited Quantity Available
NEW HO EMD E8A - Standard DC -
PRR Broadway Limited
 WalthersProto. Power your blue ribbon fleet of Pennsylvania streamliners in style behind these E8A units, packed with railroad-specific details and featuring the proven performance of the WalthersProto drive.
PRR (Single stripe: Tuscan, black, Dulux)
 920-49352 #5711A
 920-49353 #5793A
Price: \$229.98

Fast Check-Out Options
at www.walthers.com!

Sale products listed in this Flyer were either in stock or expected to be at press time. Because of increased demand for sale-priced items and limited quantities available, some may be out of stock following the printing of this catalog. We reserve the right to correct errors, change prices and modify designs without notice and without obligation to previous purchasers. All rights reserved.

Prices and delivery dates of newly announced items shown were accurate at press time, for updates, visit walthers.com.

©2018 Wm. K. Walthers, Inc. All prices are listed in U.S. dollars. Prices subject to change without notice.

Photos and/or listings of products depicting political or religious themes do not constitute an endorsement by Wm. K. Walthers, Inc.

Select products are not shippable to California.

CSX proprietary marks used by permission of CSX Transportation, Inc.

Wm. K. Walthers, Inc. is an official licensee of Amtrak. Amtrak is a registered service mark of the National Railroad Passenger Corporation.

Accumate® couplers are made under license from Accumail, Inc.

The BNSF Railway, Burlington Northern, Burlington Route, Colorado and Southern, Denver Road, Frisco, Great Northern Railway, Northern Pacific Railway, Santa Fe, Spokane Portland and Seattle Ry., and Burlington Northern Santa Fe Railway marks are licensed marks owned by BNSF Railway Company.

Products bearing American Refrigerator Transit Company, ART, Chicago & North Western Railway, Chicago & North Western System, Chicago & North Western, CNW, C&NW, Denver & Rio Grande Western, DRGW, D&RG, D&RGW, Rio Grande, Katy Railroad, The Katy, Missouri-Kansas-Texas, MKT, M-K-T, Missouri Pacific Lines, Missouri Pacific, Mo-Pac, MP, Pacific Fruit Express Company, Pacific Fruit Express, PFE, Southern Pacific Rail Corporation, Southern Pacific Lines, Southern Pacific, SP, St. Louis Southwestern, SSW, Cotton Belt, Cotton Belt Route, Texas & Pacific, T&P, TP, Union Pacific Railroad Company, Union Pacific Railroad, Union Pacific, UP, Union Pacific Fruit Express, UPFE, Western Pacific & WP marks are made under trademark license from Union Pacific Railroad Company.



WARNING: This product can expose you to chemicals including lead and lead compounds, which are known to the State of California to cause cancer and birth defects or other reproductive harm. For more information go to www.P65Warnings.ca.gov.

Shop now at walthers.com, call 1-800-487-2467 or visit your local hobby shop



Limited Quantity Available
NEW HO EMD E8Am -
Tsunami® Sound & DCC

WalthersProto®. A superb replica of Santa Fe's E8s following the mid-1950s upgrade, these layout-ready models feature a variety of authentic details and the superb power of the WalthersProto drive, with SoundTraxx® Tsunami® sound and DCC.

920-42355 ATSF #85L (Warbonnet, silver, red)

Price: \$329.98



Limited Quantity Available
NEW HO EMD F7A - Standard DC

WalthersMainline®. Perfect for freight or passenger service, these classic F units are ready for service with a WalthersProto drive, and a nicely detailed and painted body.

910-9903 ATSF #256C (blue, yellow, Cigar Band Logo)

910-9905 CP #4103 (maroon, gray, yellow)

910-9909 PRR #9648 (Brunswick Green, Single Stripe)

910-9913 SOU Railway #6718 (green, imitation aluminum, gold)

Price: \$129.98



Limited Quantity Available
NEW HO EMD F7A - SoundTraxx®
Sound & DCC

WalthersMainline. Perfect for freight or passenger service, these classic F units are ready for service with a WalthersProto drive, a nicely detailed and painted body, and SoundTraxx® sound for DCC or DC layouts.

ATSF (blue, yellow, Cigar Band Logo) 910-19903 #257C

910-19904 #258C

CP (maroon, gray, yellow) 910-19907 #4100

910-19908 #4102

CB&Q (gray, red, black) 910-19911 #167C

910-19912 #169C

PRR (Brunswick Green, Single Stripe) 910-19915 #9649

910-19916 #9650

SP¹ (Black Widow, black, silver, orange, red) 910-19919 #6384

910-19920 #6401

SOU Railway (green, imitation aluminum, gold) 910-19923 #6714

910-19924 #6717

Price: \$199.98

Price: \$199.98

Price: \$199.98

Price: \$199.98

Price: \$199.98

Price: \$199.98

Price: \$199.98

Price: \$199.98

Price: \$199.98

Price: \$199.98

Price: \$199.98

Price: \$199.98

Price: \$199.98

Price: \$199.98

Price: \$199.98

Price: \$199.98

Price: \$199.98



Limited Quantity Available
NEW HO EMD F7 A-B Set -
Standard DC

WalthersMainline. Perfect for freight or passenger service, these classic F units are ready for service with a WalthersProto drive, and a nicely detailed and painted body.

910-9902 ATSF #255L, 255A (blue, yellow, Cigar Band Logo)

910-9904 CP #4101, 4443 (maroon, gray, yellow)

910-9908 PRR #9668, 9668B (Brunswick Green, Single-Stripe)

910-9912 SOU Railway #6714, 6180 (green, imitation aluminum, gold)

Price: \$249.98

Price: \$249.98

Price: \$249.98

Price: \$249.98

Price: \$249.98

Price: \$249.98

Price: \$249.98

Price: \$249.98

Price: \$249.98

Price: \$249.98

Price: \$249.98

Price: \$249.98

Price: \$249.98

Price: \$249.98

Price: \$249.98

Price: \$249.98

Price: \$249.98

Price: \$249.98

Price: \$249.98

Price: \$249.98

Price: \$249.98

Price: \$249.98

Price: \$249.98

Price: \$249.98

Price: \$249.98

Price: \$249.98

Price: \$249.98

Price: \$249.98

Price: \$249.98

Price: \$249.98

Price: \$249.98

Price: \$249.98

Price: \$249.98

Price: \$249.98

Price: \$249.98

Price: \$249.98

Price: \$249.98

Price: \$249.98

Price: \$249.98

Price: \$249.98

Price: \$249.98

Price: \$249.98

Price: \$249.98

Price: \$249.98

Price: \$249.98

Price: \$249.98

Price: \$249.98

Price: \$249.98

Price: \$249.98

Price: \$249.98

Price: \$249.98

Price: \$249.98

Price: \$249.98

Price: \$249.98

Price: \$249.98

Price: \$249.98

Price: \$249.98

Price: \$249.98

Price: \$249.98

Price: \$249.98

Price: \$249.98

Price: \$249.98

Price: \$249.98

Price: \$249.98



Limited Quantity Available
NEW HO Alco PA - SoundTraxx®
Sound & DCC

WalthersMainline. These layout-ready locos are nicely detailed, affordably priced and packed with great features, including a proven WalthersProto drive and SoundTraxx® sound for DCC or DC operation.

Pennsylvania

910-20069 #5756A

910-20070 #5759A

UP¹ (yellow, gray, red, green)

910-20077 #604

Price: \$219.98



Limited Quantity Available
NEW HO Alco PA - PB Set -
Standard DC

WalthersMainline.

Pennsylvania

910-10067 #5754A, 5756B

910-10068 #5755A, 5758B

Price: \$279.98



Limited Quantity Available
NEW HO Alco PA - PB Set
w/SoundTraxx® Sound & DCC

WalthersMainline. Models are fully assembled with a proven WalthersProto drive, and SoundTraxx® sound for DCC or DC operation.

Pennsylvania

910-20067 #5754A, #5756B

910-20068 #5755A, #5758B

Price: \$419.98



Limited Quantity Available
NEW HO EMD SD70Ac -
Standard DC

WalthersMainline. One of the most popular diesels on the rails today, HO models are fully assembled, nicely priced and feature the proven power of the WalthersProto drive.

CN (Ex-EMD Demo, blue, gray, white) 910-9836 #8103

CSX Transportation (blue, yellow, white)

910-9837 #4835

910-9838 #4840

NS (black, white) 910-9841 #1033

910-9842 #1052

Price: \$129.98

¹Union Pacific licensed product



Limited Quantity Available

NEW HO EMD SD70ACe - ESU® Sound and DCC

WalthersMainline®. Bring a new level of realism to contemporary operations with these models, now featuring ESU sound, for DCC or DC layouts.

CN (Ex-EMD Demo, blue, gray, white)

910-19835 #8100

910-19836 #8101

CSX Transportation (blue, yellow, white)

910-19837 #4832

910-19838 #4843

Ferromex (red, green, white)

910-19839 #4059

910-19840 #4076

NS (black, white)

910-19841 #1000

910-19842 #1061

Providence & Worcester (brown, orange, white)

910-19844 #4302

Price: \$199.98



Limited Quantity Available

NEW HO Plymouth ML-8 Industrial Switcher - Standard DC

WalthersMainline. Plymouth switchers served a wide range of industries and many railroads, and some are still in service today. With a detailed body and great performance features, they're ideal for HO layouts big or small.

910-10007 BN

Price: \$99.98



NEW HO Plymouth ML-8 Industrial Switcher - ESU DCC Only

WalthersMainline. Small in size but big on power, the Plymouth ML-8 was a favorite for all kinds of switching chores, and will be right at home on your HO railroad. Layout-ready models feature a detailed body, and powerful drive with built-in capacitor to maintain performance during power interruptions.

910-20007 BN

Price: \$149.98



Limited Quantity Available

HO EMD GP9M - Standard DC

WalthersTrainline™. Heavy die cast metal frame, powerful can motor with flywheel, 8-wheel electrical pickup and working headlight.

931-456 Ontario Northland #1600

(yellow, blue, Chevrons Logo)

931-458 United States Army #4628

Reg. Price: \$69.98 Sale: \$56.98



HO USRA 0-6-0 - Standard DC

Bachmann.

160-50404 CNJ #105

Reg. Price: \$132.00 Sale: \$89.98



HO USRA 0-6-0 w/Vanderbilt Tender & Smoke - Standard DC

Bachmann.

160-50705 SP #1274

160-50706 UP #4439

Reg. Price: \$132.00 Sale: \$89.98



HO Baldwin 2-6-2 Prairie w/Smoke - Standard DC

Bachmann. Prepainted and lettered plastic body, all-metal chassis, 5-pole motor and E-Z Mate® knuckle couplers.

160-51504 SOU Railway (green)

160-51524 CN #613

Reg. Price: \$153.00 Sale: \$99.98



HO Baldwin 2-6-2 Prairie w/Vanderbilt Tender & Smoke - Standard DC

Bachmann. Prepainted and lettered plastic body, all-metal chassis, 5-pole motor and E-Z Mate knuckle couplers.

160-51523 SP #1905

Reg. Price: \$153.00 Sale: \$99.98



HO Alco 2-6-0 Mogul - Standard DC

Bachmann. Die cast chassis, operating headlight, metal handrails, metal wheels and E-Z Mate Mark II couplers.

160-51710 Atchison, Topeka & ATSF #9444

Reg. Price: \$169.00 Sale: \$109.98



FOR ALL ITEMS IN RED.

WARNING:

Cancer and Reproductive Harm - www.P65Warnings.ca.gov. See page 27.



HO EMD GP40 - DCC

Bachmann. Prepainted and lettered plastic body, 8-wheel drive, directional lighting, die cast frame, can motor and flywheels.

160-60304 ATSF #3508

(Warbonnet, blue, yellow)

160-60308 MILW #2001 (orange, black)

160-60311 SAL #626 (green, yellow, red)

Reg. Price: \$139.00 Sale: \$89.98



HO Alco S4 - Standard DC

Bachmann. Operating headlights, five-pole motor, flywheel drive, all-metal chassis and E-Z Mate couplers.

160-63109 NP #713 (black, yellow)

Reg. Price: \$129.00 Sale: \$89.98



HO Alco S4 - Sound & DCC

Bachmann. Features 8-wheel drive, precision can motor, dual precision-balanced flywheels, finescale handrails and E-Z Mate Mark II couplers.

160-63216 PRR #8487 (Brunswick Green, yellow)

Reg. Price: \$239.00 Sale: \$159.98



HO EMD F7A - Standard DC

Bachmann. Die cast chassis, operating headlight per prototype, teardrop windows, separate windshield wipers and E-Z Mate Mark II couplers.

160-63707 DRGW (4-Stripe Scheme, Aspen Gold, silver, black)

160-63709 B&O (blue, gray, black)

160-63710 Alaska Railroad (black, yellow)

Reg. Price: \$99.00 Sale: \$66.98



HO EMD F7B - Standard DC

Bachmann. Die cast chassis, and E-Z Mate Mark II couplers. Factory-installed 8-pin pocket for DCC decoder installation.

160-63807 DRGW (4-Stripe Scheme, Aspen Gold, silver, black)

160-63809 B&O (blue, gray, black)

160-63810 Alaska Railroad (black, yellow)

Reg. Price: \$99.00 Sale: \$66.98

Your Source for GEVO Diesels

HO SCALE

ESU Sound & DCC \$199.98 each

Standard DC \$129.98 each



JUST ARRIVED! ORDER TODAY!

- Limited edition - one time run of these roadnumbers!
- Model today's railroading at WaltherMainline prices
- The most popular prototype diesel in North America
- Thousands in service from 2003 to the present
- Available with ESU Sound & DCC for DCC & DC layouts
- Same powerful drive as WaltherProto® locos
- Constant & directional LED headlights
- Updated shell with molded drill starter points for grab irons in GE ES44 GEVO
- Diesel Detail Kit (#910-250) sold separately

BNSF Railway ES44AC

- Hi-ad trucks • 2-vent dynamic brake



ESU Sound & DCC – 910-20163 #6339 910-20164 #6438
Standard DC – 910-10163 #6300 910-10164 #6421

Canadian Pacific ES44AC

- Hi-ad trucks • 2-vent dynamic brake • Ex-Vancouver 2010 Scheme



ESU Sound & DCC – 910-20165 #8865 910-20166 #8876
Standard DC – 910-10165 #8858 910-10166 #8873

Citirail ES44AC

- Hi-ad trucks • 4-vent dynamic brake



ESU Sound & DCC – 910-20167 #1317 910-20168 #1435
Standard DC – 910-10167 #1212 910-10168 #1349

Iowa Interstate ES44AC

- Steerable trucks • 4-vent dynamic brake



ESU Sound & DCC – 910-20169 #504 910-20170 #512
Standard DC – 910-10169 #503 910-10170 #506

Kansas City Southern ES44AC

- Hi-ad trucks • 4-vent dynamic brake



ESU Sound & DCC – 910-20171 #4774 910-20172 #4868
Standard DC – 910-10171 #4765 910-10172 #4803

Union Pacific† ES44AH

- Hi-ad trucks • 4-vent dynamic brake



ESU Sound & DCC – 910-20173 #2531 910-20174 #2569
Standard DC – 910-10173 #2520 910-10174 #2557

NEW Diesel Detail Kit for GE ES44 GEVO

910-250 \$19.98 each
August 2018 Delivery

- 25-piece set includes:
- 4 front drop grab irons
 - 8 small straight nose grab irons
 - 4 long straight nose grab iron
 - 2 rear pilot grab irons
 - 2 long end handrail grab irons

- 2 drop grab irons for long hood behind cab
- 3 drop grab irons for rear inverter box
- 2 plastic injected cut levers

HO SCALE | LOCOMOTIVES



HO EMD F7A - Sound & DCC

Bachmann. Die cast chassis, operating headlight per prototype, teardrop windows, separate windshield wipers and E-Z Mate® Mark II couplers.

160-64302 NYC (Lightning Stripe, Black, gray)

Reg. Price: \$199.00 Sale: **\$129.98**



HO EMD F7B - Sound & DCC

Bachmann. Equipped with Sound Value SoundTraxx® diesel sound package with prototypical 567 prime mover 16-bit sound. Die cast chassis and E-Z Mate Mark II couplers.

160-64402 NYC (Lightning Stripe, Black, gray)

160-64405 PRR (Brunswick Green, Single-Stripe)

Reg. Price: \$199.00 Sale: **\$129.98**



Limited Quantity Available

HO EMD GP35 Phase Ia - Standard DC

Kato. Equipped with powerful 5-pole motor with dual brass flywheels, all-wheel electrical pickup from blackened metal wheels, directional headlights and DCC-friendly mechanism.

Atchison, Topeka & ATSF (blue, yellow)

381-373022 #3305

NYC (black, white)

381-373023 #6125

381-373024 #6126

Reg. Price: \$145.00 Sale: **\$119.98**



Limited Quantity Available

HO EMD SD40-2 Mid-Production - Standard DC

Kato. Functioning ditch lights, factory-installed handrails, LED headlights and illuminated, printed numberboards. DCC-friendly.

BN (Cascade Green, white, black)

381-376604 #7036

381-376605 #8023

ATSF (Warbonnet, blue, yellow)

381-376616 #5072

381-376617 #5088

Reg. Price: \$185.00 Sale: **\$149.98**

*Fast Check-Out Options
at www.walthers.com/*

HO SCALE | PASSENGER & FREIGHT CARS



HO Open-Sided Excursion Car w/Seats - Silver Series®

Bachmann.

160-17448 Unlettered (silver, yellow)

Reg. Price: \$45.00 Sale: **\$29.98**



Limited Quantity Available

HO Superliner I Coach

Kato. Crisp, elegant details including full interior detailing, flush tinted windows and free rolling trucks.

381-356052 Amtrak #33010

(Phase III, silver, equal red, white & blue stripes)

Reg. Price: \$80.00 Sale: **\$63.98**



Limited Quantity Available

HO Superliner I Sleeper

Kato.

381-356082 Amtrak (Phase III, silver, equal red, white & blue stripes)

Reg. Price: \$80.00 Sale: **\$63.98**

FOR ALL ITEMS IN RED.
WARNING:

Cancer and Reproductive Harm - www.P65Warnings.ca.gov. See page 27.



Limited Quantity Available

HO 1860s-Era Wood Combine

Mantua.

455-717004 NP (green)

Reg. Price: \$17.49 Sale: **\$14.98**



NEW HO 50' ACF Exterior-Post Boxcar

WalthersMainline®.

BN & Santa Fe

910-2167 #724826

IC Gulf

910-2171 #501028

910-2172 #501045

Vermont Northern

910-2177 #7703

910-2178 #7728

Price: \$27.98



HO 50' AAR Mechanical Refrigerator Car

WalthersMainline.

910-3757 EL #5003 (orange, black, white)

Reg. Price: \$27.98 Sale: **\$22.98**



NEW HO 50' Front Runner w/Trailer

WalthersMainline.

Trailer-Train TTOX

910-5013 #121429 w/45' ATSF

Trailer #801152

TTOX

910-5015 #135538 w/45' CR

Trailer #253003

910-5016 #135747 w/45' XTRA

Trailer #293383

910-5017 #140111 w/45' Trans

America Trailer #208111

TTUX

910-5018 #121007 w/45' ATSF

Trailer #801155

910-5019 #121212 w/45' BN

Trailer #610046

910-5020 #121249 w/45' CR

Trailer #253005

910-5021 #121582 w/45' XTRA

Trailer #293303

910-5022 #130010 w/45' Trans

America Trailer #208931

Price: \$39.98



HO 40' PS-1 Boxcar

WalthersMainline.

ACL

910-2385 #25680

910-2386 #25686

Reg. Price: \$27.98 Sale: **\$22.98**



NEW HO 50' Waffle-Side Boxcar
WalthersMainline®.

ATSF (Youngstown Doors, red, white, yellow, Super Shock Control)

910-2317 #527090

910-2318 #527096

Chessie System B&O (Youngstown Doors, blue, yellow)

910-2319 #484760

910-2320 #484766

BN (Superior Doors, Cascade Green, white)

910-2321 #332152

910-2322 #332179

CNW® (Youngstown Doors, Boxcar Red, Railway Logo)

910-2323 #160406

910-2324 #161505

D&H (P-S doors, yellow, blue, large Bridge Line logo)

910-2325 #24069

910-2326 #24053

Illinois Terminal (Superior doors, yellow, green, black, script name)

910-2327 #7446

910-2328 #7488

Price: \$27.98



Limited Quantity Available

NEW HO 40' AAR Modified

1937 Boxcar

WalthersMainline.

910-2714 Detroit & Mackinac #2958

(Boxcar Red, white, Large D&M)

910-2718 Delaware, Lackawanna &

Western #51460 (Oxide, white, Route of Phoebe Snow)

Price: \$27.98



Limited Quantity Available

HO 50' RD-4 Hopper 3-Pack

WalthersMainline. Railroad-ready three-pack is perfect for modeling unit trains, with detailed bodies, heavy die-cast metal underframes and 33" turned metal wheelsets.

Flex Leasing Corporation (Aluminum, black)

910-56861 #98009, 98021,

98092

910-56862 #98039, 98047,

98065

Trinity Industries Leasing (Aluminum, green)

910-56865 #420350, 420404,

420515

910-56866 #420399, 420444,

420568

Reg. Price: \$79.98 Sale: \$64.98

*Union Pacific licensed product



NEW HO 53' Singamas Corrugated-Side Container - Assembled

Walthers SceneMaster™.

949-8526 APL Logistics (blue, white)

949-8527 Axsun (gray, yellow, black)

949-8528 CSX Intermodal (blue, yellow)

949-8529 Dart (white, black, red)

949-8530 EMP (green, blue, yellow)

Price: \$12.98



HO 45' CIMC Container - Assembled

Walthers SceneMaster.

949-8556 Maersk (silver, blue, black)

Reg. Price: \$12.98 Sale: \$10.98



NEW HO 28' Container with Chassis 2-Pack - Assembled

Walthers SceneMaster.

949-8600 United Parcel Service

UPSZ (gray)

949-8601 United Parcel Service

(Modern Shield Logo, gray, brown, yellow)

Price: \$27.98



Limited Quantity Available

HO Boxcar

WalthersTrainline™.

931-1406 NH (orange, black, white,

Large NH Logo)

Reg. Price: \$17.98 Sale: \$14.98



HO Wide-Vision Caboose

WalthersTrainline.

931-1528 St. Maries River Railroad

(maroon, beige, black)

931-1529 DRGW® (orange, black,

silver)

931-1532 Wisconsin & SOU (red,

gray)

Reg. Price: \$24.98 Sale: \$19.98



HO 40' Tank Car

WalthersTrainline.

931-1618 Godchaux Sugar GATX

#36372 (white, blue, black)

Reg. Price: \$17.98 Sale: \$14.98



Limited Quantity Available

NEW HO Jindo 53' Cargo Container 3-Pack - Assembled - Master®

Atlas.

CSX (blue, yellow, Boxcar Logo, How Tomorrow Moves Slogan)

150-20004620

150-20004621

NACS (white, blue)

150-20004622

150-20004623

Reg. Price: \$49.95 Sale: \$39.98



HO Track Cleaning Tank Car

Bachmann. Layout-ready car comes with a reusable under-body mounted pad that cleans tracks quickly and easily while you run your trains.

160-16302 Union Tank Line

Reg. Price: \$52.00 Sale: \$34.98



HO 40' Gondola - Silver Series®

Bachmann.

160-17231 NH #61072 (black, orange)

Reg. Price: \$25.00 Sale: \$16.98



HO 56' ACF Center-Flow Covered Hopper - Silver Series

Bachmann.

160-17531 Cargill Salt

160-17534 Shell Oil Company

Reg. Price: \$30.00 Sale: \$19.98



HO 50' Steel Mechanical Reefer - Silver Series

Bachmann.

160-17904 Railway Express Agency

160-17908 Bangor & Aroostook

#7574 (yellow, Large BAR, Shield Logo)

Reg. Price: \$29.00 Sale: \$19.98



HO ACF Log Car w/Logs - Silver Series®

Bachmann. Ready-to-run cars are repainted and lettered, and include trucks and horn-hook couplers.

160-18332 1906-1935 Version (Boxcar Red)

Reg. Price: \$64.00 Sale: \$42.98



HO Ore Car - Silver Series

Bachmann.

160-18603 N&W #21998

160-18605 PRR #14517 (Tuscan)

Reg. Price: \$27.00 Sale: \$17.98



HO ACF 50'6" Drop-End Gondola w/Crushed Auto Load

Bachmann.

160-71907 CP #340215

Reg. Price: \$46.00 Sale: \$30.98



HO Old-Time Tank Car

Bachmann.

160-72101 B&O #1260 (Boxcar Red, black)

160-72102 NYC & Hudson River #5428 (black)

160-72103 Philadelphia & RDG #153 (Boxcar Red, silver)

160-72104 Virginia & Truckee #129 (green, yellow)

Reg. Price: \$38.00 Sale: \$25.98



HO 34' Wood Old Time Boxcar - Silver Series

Bachmann.

160-72303 CP #147358 (Boxcar Red)

160-72305 Boston & Albany #5742 (Boxcar Red)

Reg. Price: \$29.00 Sale: \$19.98



HO Steel Bay Window Caboose

Bachmann.

160-73203 Erie #C326 (red, white, black, "Radio Equipped" Slogan)

160-73204 B&O #C-3015 (blue, yellow, silver)

Reg. Price: \$59.00 Sale: \$39.98



HO 380-Ton Schnabel Car w/Retort Load - Spectrum®

Bachmann. Features include 16 sets of 125-ton roller-bearing trucks, 8 span bolsters, detailed retort cylinder load and molded hydraulic lines and pumps.

160-80511 Blue, Black

160-80513 Red, Black

Reg. Price: \$349.00 Sale: \$239.98



HO ACF Log Car w/Logs - Silver Series

Bachmann.

160-18849 1935-1960 Version (Boxcar Red)

Reg. Price: \$64.00 Sale: \$42.98



HO 41' Flatcar - Kit

Central Valley.

210-1003 NP pkg(2)

Reg. Price: \$12.95 Sale: \$10.98

Build Your Own Wishlist!
www.walthers.com



HO 40' Plug-Door Boxcar

Con-Cor.

223-1006058 Trump Memorial Day

2018 Commemorative (white, red, blue, black)

Reg. Price: \$31.98 Sale: \$26.98



HO 53'6" GSC Commonwealth Flatcar - Kit

Tichy Train.

293-1000 Undecorated

Reg. Price: \$12.00 Sale: \$10.24



HO 120-Ton Brownhoist Railroad Wrecking Crane - Kit

Tichy Train.

293-4010 Undecorated

Reg. Price: \$29.50 Sale: \$24.98



FOR ALL ITEMS IN RED.

WARNING:

Cancer and Reproductive Harm - www.P65Warnings.ca.gov. See page 27.



Limited Quantity Available

NEW HO Pullman-Standard PS-1 40' Boxcar w/6' 5-Panel Door

Kadee.

380-4531 Minneapolis, Northfield & SOU #1157 (1967 Scheme, blue, red, Billboard MNS)

Reg. Price: \$39.95 Sale: \$35.98



Limited Quantity Available

HO 1860s-Era Wood Log Car w/Load

Mantua.

455-724020 PRR #14798

Reg. Price: \$17.49 Sale: \$14.98



Limited Quantity Available

HO 40' Single-Dome Tank Car

Mantua.

455-732520 PRR

Reg. Price: \$17.49 Sale: \$14.98



HO Pollock 75-Ton Hot Metal Car - Kit

State Tool & Die.

661-720 Undecorated

Reg. Price: \$19.20 Sale: \$16.98



HO 3-in-1 Open Top Hot Metal Car - Kit

State Tool & Die.

661-725 Undecorated with

Extended Ladle & Add-On Wings

Reg. Price: \$22.95 Sale: \$20.98



HO Large Bottom-Pour Ingot Car w/Mold - Kit

State Tool & Die.

661-737 Undecorated pkg(2)

Reg. Price: \$27.95 Sale: \$24.98

Here are some of the Retailers Participating in this Sale!

You can visit these hobby shops for the products in this sale flyer.
For hobby shop locations and directions, go to walthers.com/storelocator.

ARIZONA

Obies Trains, *Apache Junction*
An Affair With Trains, *Phoenix*
The Hobby Depot, *Tempe*

CALIFORNIA

Railmaster Hobbies Inc, *Bellflower*
Dynamic Hobbies, *Hemet*
Schultz's Hobbies, *Long Beach*
Railroad Hobbies, *Roseville*
J&M Hobby House, *San Carlos*
The Train Shop, *Santa Clara*
Arnie's Trains, *Westminster*

COLORADO

Caboose LTD, *Lakewood*

CONNECTICUT

Ann's Hobby Center, *Cos Cob*

DELAWARE

Williamsville Country Store, *Houston*

FLORIDA

Metro Trains & Hobbies, *Ft. Myers*
Orange Park Hobby World, *Jacksonville*
Trains by Johnson, *Pensacola*
Roundhouse South, *Port Orange*
Dana's Railroad Supply, *Spring Hill*

GEORGIA

Trainmaster, *Buford*
Hobby Town USA, *Kennesaw*
Riverdale Station, *Riverdale*

IDAHO

Hardwoods, Hardware & Hobbies, *Boise*

ILLINOIS

Antioch Model Trains, *Antioch*
Grayland Station, *Chicago*
Des Plaines Hobbies, *Des Plaines*
Walt's Hobby, *Joliet/Crest Hill*
Ron's Mundelein Hobby, *Mundelein*
Mike's Scale Rails, *Peoria*

INDIANA

CP Trains Stop, *Crown Point*
Rupel Toy Trains, *Elkhart*
Phil's Hobby Shop, *Fort Wayne*
G&G Hobbies, *Griffith*

IOWA

The Hobbycraft Shop, *Burlington*
Caboose Stop Hobbies, *Cedar Falls*
Hobby Haven, *Urbandale*

KANSAS

To To Trains, *Lawrence*

KENTUCKY

Tim's Trains and Hobbies, *Covington*
Roundhouse Electric Trains, *Louisville*
Scale Reproductions, *Louisville*

MARYLAND

MB Klein, Inc., *Cockeysville*

MASSACHUSETTS

Maine Trains, *Chelmsford*
H. H. Snow & Sons, Inc., *Orleans*
Hobby Emporium, *Tyngsboro*

MICHIGAN

Trains & Things Hobbies, *Traverse City*

MINNESOTA

Sidetrack Hobbies, *Albert Lea*
Becker's, *New Brighton*
Everything Hobby, *Rochester*

MISSOURI

Mark Twain Hobbies, *Saint Charles*

MONTANA

Jim's Junction, *Billings*

NEBRASKA

House of Trains, *Omaha*

NEVADA

Hobbytown USA, *Las Vegas*
Westside Trains, *Las Vegas*

NEW JERSEY

Yankee Dabbler, *Bellmawr*
The Model Railroad Shop, *Piscataway*
Sattler's Hobby Shop, *Westmont*

NEW MEXICO

Fifer Hobby Supply, *Las Cruces*

NEW HAMPSHIRE

Toy City, *Keene*

NEW YORK

VCS Hobbies, *Brooklyn*
Lake City Hobbies, *Geneva*
JP's Trains & Hobbies, *Latham*
Willis Hobbies & Craft, *Mineola*
Dan's Crafts & Things, *Rochester*
Mohawk Valley Railroad Co., *Schenectady*
Little Choo Choo, *Spencer*

NORTH DAKOTA

Hobby Hut, *Fargo*

OHIO

Rob's Trains, *Alliance*
Robbies Hobbies, *Columbus*
Hobbytown USA, *Mentor*
Stewart's Hobbies & Collectors, *Willoughby*

OREGON

Tammie's Hobbies, *Beaverton*
The Hobby Smith, *Portland*
Whistlestop, *Portland*
Mac's Tracks Model Railroad, *Roseburg*

PENNSYLVANIA

Mainline Hobby Supply, *Blue Ridge Summit*
Tommy Gilbert's, *Gettysburg*
Niedzalkoski's Train Shop, *Jeannette*
Iron Horse Hobby House, *Reading*
Choo Choo Barn, *Strasburg*

TENNESSEE

The Tennessee Central Railway, *Nashville*

TEXAS

Discount Model Trains, *Addison*
Groves Train Repair, *Odessa*
Spring Crossing, *Spring*
Annie Jewel & Charlie's Kids, *Wichita Falls*

UTAH

Wonderful World of Trains, *Ogden*
M.R.S. Hobby Shop, *Sandy*

WASHINGTON

Pacific Western Rail Systems, *Ferndale*
Parkade Hobbies, *Kennewick*
Sunset Junction, *Spokane*

WEST VIRGINIA

Nitro Hobby & Craft Center, *Nitro*

WISCONSIN

Sommerfeld's Trains & Hobbies, *Butler*
Madison Hobby Shop, *Madison*
Hobby Connection, *Rothschild*
Jetco's Hiawatha Hobbies, *Waukesha*

WYOMING

Cherry Creek Hobbies, *Torrington*

CANADA

Don's HO Service, *Moncton, New Brunswick*
Otter Valley Railroad, *Aylmer, Ontario*
Broughdale Hobby & Photo, *London, Ontario*
George's Trains Ltd, *Markham, Ontario*
Lark Spur Line, Ltd., *Merrickville, Ontario*
Credit Valley, *Streetsville, Ontario*
Modele B.T., *Drummondville, Quebec*
Van Horne Hobby Ltd, *Laval, Quebec*

AUSTRIA

Modellbahn-Welt, *Leobersdorf*

GERMANY

Modellbahn-Atelier-Berlin, *Berlin*
All American Trains, *Kaarst*

JAPAN

Trainwave, *Tokyo*

*Participating dealers may be temporarily out of stock on some items in this flyer. Your dealer can immediately check the Walthers warehouse for availability and order any item shown in this flyer or in Walthers Reference Books using EXPRES™ IV, our website (walthers.com) or by calling Walthers toll-free number. All items, unless otherwise stated, were expected to be in stock prior to this publication being mailed. However, some items may be out of stock due to sales demand.

WALTHERS®

HOW TO ORDER

For fastest service, place your order online at waltthers.com. You can also call 1-800-4TRAINS (1-800-487-2467)* at any time — our regular business hours are Monday through Friday, 8:00 AM to 4:30 PM Central Time. After hours, you can place an automated order or leave a message. Phone orders must be charged to a credit card.

*If ordering from outside Canada, Mexico or the USA, please call (414) 527-0770 or fax this order form to (414) 527-4423, Attn: Consumer Sales.

ORDER PAYMENT

For fastest service, order by credit card; we accept Visa, MasterCard, American Express and Discover. We also accept personal checks or money orders. Unless certified, checks over \$200.00 will be cleared before the order ships, which can take up to 10 business days. **Now accepting PayPal for online orders of in-stock merchandise.**

www.waltthers.com
1-800-4TRAINS (1-800-487-2467) 1-800-807-2467 FAX
5601 W Florist Ave, Milwaukee, WI 53218-1622

BILL TO

CUSTOMER NUMBER _____
PROMO/KEYCODE _____
Name _____
Address _____
City, State, Zip _____
County _____
Country (if outside U.S.A.) _____
Daytime Phone (____) _____
Date of Order _____
Email _____

SHIP TO

Same as Billing Address
Name _____
Address _____
City, State, Zip _____
County _____
Country (if outside U.S.A.) _____
Daytime Phone (____) _____

Check this box and list your previous address if you have moved since your last order

Always give MANUFACTURER'S NAME and NUMBER when ordering. Please, ENTER ONLY ONE ITEM PER LINE.

QTY ORDERED	MANUFACTURER NAME	MANUFACTURER PART NUMBER	DESCRIPTION	UNIT PRICE	TOTAL
1			NOTE: Orders are filled by NUMBER, not description.		
2					
3					
4					
5					

Back Order Instructions (Credit Card Only)

Your credit card account will NOT be charged until your merchandise is available for shipment. On items that are back ordered, we will guarantee the price for at least six months from the date of order.

X Domestic	International
<input type="checkbox"/> Hold backorders until value reaches \$20.00. Shipping & handling charges are 10% of total value (\$3.00 to \$5.50 maximum).	<input type="checkbox"/> Hold backorders until value reaches \$50.00. Standard international shipping fees apply, plus a \$7.50 handling fee.
<input type="checkbox"/> Ship backordered items as available. Shipping & handling charges are 10% of total value (\$3.00 to \$5.50 maximum).	<input type="checkbox"/> Ship backordered items as available. Standard international shipping fees apply. An additional \$12.50 handling fee is added to orders under \$50.00.
<input type="checkbox"/> No Backorders	Don't backorder out-of-stock merchandise.

Need to return an item?

For a return authorization, please call us at 1-800-487-2467, e-mail custserv@waltthers.com or go to our website to view our return policy at www.waltthers.com/returns.



VISA MasterCard
 Discover American Express

Most standard shipping orders are delivered by the US Postal Service.

DOMESTIC HANDLING CHARGES

\$11.95 for Standard Shipping. Expedited delivery is available — See below. **FREE STANDARD SHIPPING** applies to orders with \$150.00 or more of in-stock merchandise.

Over-sized shipment fee still applies to orders that qualify for free standard shipping.

UPGRADED DOMESTIC SHIPPING CHARGES

Charges listed below are in addition to the \$11.95 standard delivery charge that is required on all upgraded orders. **Priority delivery, please add \$7.00. Second-day delivery, please add \$25.00. Next-day delivery, please add \$58.00.** Note: Upgraded orders placed after 12:00 PM Central Time may not ship until the next business day.

INTERNATIONAL SHIPPING CHARGES

Please note that taxes, customs duties and brokerage fees may apply and will be added once your order reaches its destination. These additional charges are the sole responsibility of the buyer.

All international orders add \$15.00 handling fee plus 25% of the merchandise total on orders \$150.00 and under or 20% of the merchandise total on orders \$150.01 or more. Please allow 2-4 weeks for Canadian shipments and 4-6 weeks for shipments outside of Canada.

OVERSIZED SHIPMENT FEE

Any shipments with one or more oversized items will include an added fee of \$12.00 for domestic shipments and \$15.00 for international shipments. Oversized items are indicated as such on our website and are not available for backorder.

Merchandise Total	
Handling Charge	
Upgraded Shipping Charge	
Subtotal	
International Shipping	
Oversized Shipment Fee	
IL, NY, VA & WI Residents Add Applicable State, County and Local Sales Tax to Subtotal	
TOTAL	

HO SCALE | COUPLERS | TRUCKS



HO 36" Turned Metal Wheelsets
WalthersProto®.
920-2302 With Metal Axles pkg(12)
Reg. Price: \$12.98 Sale: **\$11.98**



HO 36" Turned Metal Wheelsets
WalthersProto.
920-2303 With Plastic Axles pkg(12)
Reg. Price: \$9.98 Sale: **\$8.98**



HO 33" Turned Metal Wheelsets
WalthersProto.
920-2304 With Metal Axles pkg(100)
Reg. Price: \$89.98 Sale: **\$80.98**



HO Coupler Box Covers
A Line.
116-11005 For Athearn Rolling Stock pkg(12)
Reg. Price: \$9.95 Sale: **\$8.98**



HO #156 Whisker® Scale Self-Centering Knuckle Couplers - Kit - Magne-Matic®
Kadee.
380-156 Long 25/64" Centerset Shank w/#242 Draft Gear Boxes 2 Pair
Reg. Price: \$4.60 Sale: **\$4.25**



HO Under-the-Ties Electric Uncoupler
Kadee.
380-309 Fits Any Code Rail
Reg. Price: \$20.15 Sale: **\$17.98**



HO Bettendorf 50-Ton Fully Sprung Metal Trucks w/Whisker Couplers - Kit
Kadee.
380-502 Code 110 (.110") 33" Smooth-Back RP-25 Wheels 1 Pair
Reg. Price: \$10.25 Sale: **\$8.98**



HO Arch Bar Electrical Pickup Trucks
Kadee.
380-593 Leaf Spring w/33" Smooth Back Wheels pkg(2)
Reg. Price: \$23.25 Sale: **\$20.98**



HO Code 110 (.110") 36" Smooth-Back RP-25 Wheelsets
Kadee.
380-522 pkg(12)
Reg. Price: \$12.05 Sale: **\$10.98**



HO Rix Sticker Rix.
628-14 Magnetic Uncoupling Tool
Reg. Price: \$4.45 Sale: **\$3.98**

HO SCALE | TRACK



HO Track Bumpers
Walthers Cornerstone®.
933-3511 Kit pkg(12)
Reg. Price: \$14.98 Sale: **\$12.98**



HO Steel Track pkg(4) - Power-Loc™
Life-Like from Walthers.
433-21302 9" Straight
433-21303 18" Radius Curved
433-21317 3" Straight
Reg. Price: \$9.98 Sale: **\$8.49**
433-21318 22" Radius Curved
Reg. Price: \$11.98 Sale: **\$9.99**



HO Steel Track - Power-Loc
Life-Like from Walthers.
433-21316 9" Straight Terminal Rerailer
Reg. Price: \$9.98 Sale: **\$8.49**



HO 18" Radius Curve
Life-Like from Walthers.
433-3000 Code 100 Nickel Silver pkg(4)
Reg. Price: \$5.98 Sale: **\$4.99**



HO 9" Straight Track
Life-Like from Walthers.
433-3001 Code 100 Nickel Silver pkg(4)
Reg. Price: \$5.98 Sale: **\$4.99**



HO Terminal Joiners w/Black #22 Gauge Wire
Life-Like from Walthers.
433-3010 Code 100 Nickel Silver pkg(2)
Reg. Price: \$5.98 Sale: **\$4.99**



HO Operating Ground Throw
Caboose Industries.
97-103 Rigid .190" Travel w/Selectable End Fittings, Lantern & Targets
Reg. Price: \$7.15 Sale: **\$6.74**
97-117 Rigid .165" Travel w/Selectable End Fittings
Reg. Price: \$3.35 Sale: **\$2.98**



HO Operating Ground Throw
Caboose Industries.
97-101 Rigid .190" Travel
Reg. Price: \$3.25 Sale: **\$2.98**



HO Operating Ground Throw
Caboose Industries.
97-202 Sprung .190" Travel
Reg. Price: \$3.40 Sale: **\$2.99**



HO High-Level Switch Stand
Caboose Industries.
97-204 Sprung .190" Travel w/Selectable End Fittings, Lantern & Targets
Reg. Price: \$7.40 Sale: **\$6.99**

WALTHERS®

Layout Control System HO, N, Z, S, and O SCALE



Make the switch to Walthers Controls for easy and affordable switch machine operation!

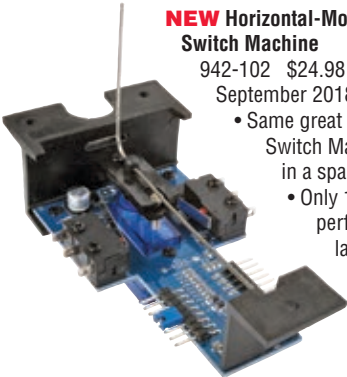
Plug-and-play wiring eliminates splicing and soldering between the servo-based, slow-motion switch machine, power supply, LED pushbutton controllers and other accessories, each built tough for years of dependable operation. User-friendly instructions and drilling templates are provided for easy installation on HO, N, Z, S or O Scale layouts using DC or DCC power.

NEW Horizontal-Mount Switch Machine

942-102 \$24.98

September 2018 Delivery

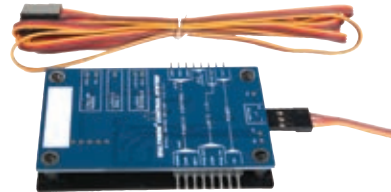
- Same great features as Switch Machine (942-101) in a space saving design!
- Only 1-5/8" (4.1cm) tall - perfect for multi-deck layouts or anywhere space is limited



NEW Stall Motor Switch Machine Controller

942-161 \$19.98 November 2018 Delivery

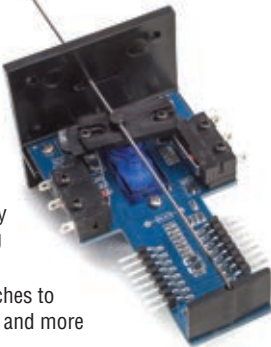
- Easily upgrade your existing stall motor switch machines to use Walthers Layout Control System plug & play fascia controls & indicators
- Works with most popular brands of stall motor switch machines



Vertical-Mount Switch Machine

942-101 \$24.98

- Fully assembled, servo-based unit works on DC or DCC layouts
- Simple plug-and-play wiring - no soldering or splicing!
- Two built-in 5A switches to power frogs, signals and more



NEW Edge Connector for Tortoise® Switch Machine

942-142 pkg(2) \$7.98 November 2018 Delivery

- Plug & play wiring for Tortoise® Switch Machine (sold separately)
- Includes 6" (15.2cm) motor connection cable with plug for direct connection to Stall Motor Controller (942-161, sold separately)

Distribution Block

942-111 \$11.98

- Simplifies electrical connections from power supply to as many as 8 switch machines



See the entire line and how easy it is to plan your system with online videos, instruction sheets, installation diagrams and more at: walthers.com/walthers-control-system

WALTHERS®

Support your local hobby shop • visit walthers.com • call 1-800-4-TRAINS

Availability and prices shown were accurate at press time, for updates please visit walthers.com. Preproduction models shown, some details and colors may vary.



HO Operating Ground Throw

Caboose Industries.
97-218 Sprung .165"
Travel w/Selectable End
Fittings
Reg. Price: \$3.55 Sale: **\$3.24**



HO Operating Ground Throw

Caboose Industries.
97-5202 Sprung .190"
Travel #202 pkg(5)
Reg. Price: \$16.25 Sale: **\$13.98**



HO Operating Ground Throw

Caboose Industries.
97-5218 Sprung .165"
Travel w/Selectable End
Fittings #218 pkg(5)
Reg. Price: \$16.75 Sale: **\$13.98**



HO Remote Control Switch Machine

Atlas.
150-52 Left Hand,
Black Ties
150-53 Right Hand,
Black Ties
Reg. Price: \$12.95 Sale: **\$10.24**



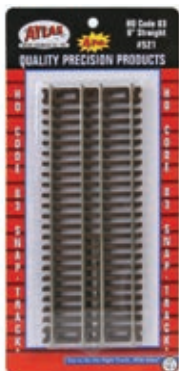
HO Code 83 Turnout

Atlas.
150-505 #6 Left Hand
150-506 #6 Right Hand
Reg. Price: \$23.95 Sale: **\$18.98**



HO Custom Line® Mark 4 Turnout - Nickel-Silver

Atlas.
150-282 #4 Right,
Black Ties
Reg. Price: \$19.95 Sale: **\$15.98**



HO Code 83 Straight Snap-Track®

Atlas.
150-521 6" 15.2cm
pkg(4)
150-522 3" 7.6cm
pkg(4)
Reg. Price: \$4.95 Sale: **\$4.24**



HO Switch Machine

Atlas.
150-65 Under Table
(Right or Left)
Reg. Price: \$11.95 Sale: **\$10.49**



HO Code 100 Super-Flex Track®

Atlas.
150-178 Nickel Silver,
Black Ties, 36" 91.4cm
Long Section pkg(5)
Reg. Price: \$31.95 Sale: **\$24.98**



HO Mark 4 Nickel-Silver Turnout - Custom Line®

Atlas.
150-280 Wye, Black Ties
Reg. Price: \$19.95 Sale: **\$15.98**



HO Mark 4 Nickel-Silver Turnout - Custom Line

Atlas.
150-281 #4 Left,
Black Ties
Reg. Price: \$19.95 Sale: **\$15.98**



HO Mark 4 Nickel-Silver Turnout - Custom Line

Atlas.
150-283 #6 Left,
Black Ties
Reg. Price: \$19.95 Sale: **\$15.98**



HO Code 83 Flex-Track - 36" 91.4cm Long Section

Atlas.
150-500 Brown Ties
Reg. Price: \$6.95 Sale: **\$5.98**

HO Decoder-Equipped Nickel Silver Turnout - E-Z Track®

Bachmann.
Components feature nickel silver rail, gray roadbed, electrically wired frogs for reliable operation and require no special wiring or control boxes.
160-44132 #5 Left Hand
160-44133 #5 Right Hand
Reg. Price: \$81.00 Sale: **\$54.98**



HO Crossing w/Steel Rail & Black Roadbed - E-Z Track

Bachmann.
160-44440 30-Degree
Reg. Price: \$12.50 Sale: **\$9.24**
160-44441 90-Degree
Reg. Price: \$16.50 Sale: **\$10.98**



HO Straight Track w/Steel Rail & Black Roadbed - E-Z Track

Bachmann.
160-44410 9" 22.9cm
Terminal Rerailer
Reg. Price: \$11.50 Sale: **\$8.49**



HO Expander Set - E-Z Track

Bachmann. Set contains 4 pieces of 9" straight track, 4 pieces of 18" radius curved track, 1 left hand manual turnout, 1 right hand manual turnout and 2 Hayes bumpers plus a 32-page track plan manual. Ideal for expanding your train set.
160-44494 Steel Rail & Black Roadbed
Reg. Price: \$91.00 Sale: **\$60.98**
160-44594 Nickel-Silver Rail & Gray Roadbed
Reg. Price: \$125.00 Sale: **\$83.98**

HO Curved Track w/Nickel Silver Rail & Gray Roadbed - E-Z Track

Bachmann.
160-44502 18" 45.7cm
Radius
Terminal Rerailer
Reg. Price: \$12.00 Sale: **\$8.99**
160-44503 22" 55.9cm
Radius pkg(4)
Reg. Price: \$21.50 Sale: **\$14.98**
160-44504 33-1/4" Radius, 18-Degree Curve pkg(5)
160-44507 35-1/2" Radius 18-Degree Curve pkg(5)
160-44519 26" Radius pkg(5)
Reg. Price: \$28.50 Sale: **\$18.98**
160-44505 15" Radius pkg(4)
Reg. Price: \$18.50 Sale: **\$11.98**



**SO MANY PRODUCTS
SO LITTLE SPACE!**

FIND MORE ONLINE NOW!

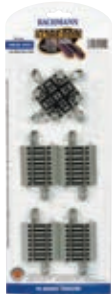
1. Go to www.walters.com/monthly-flyer
2. Click View Flyer Online
3. Page through, shop, enjoy!



HO Straight Track w/Nickel Silver Rail & Gray Roadbed - E-Z Track®

Bachmann.
160-44513 2-1/4" 5.7cm pkg(4)
Reg. Price: \$12.00 Sale: **\$8.99**
160-44528 9" Straight Rerailer pkg(2)
Reg. Price: \$11.00 Sale: **\$8.24**

HO Crossing w/Nickel Silver Rail & Gray Roadbed - E-Z Track
Bachmann.
160-44541 90-Degree
Reg. Price: \$24.00
Sale: **\$15.98**



HO Connector Assortment - E-Z Track
Bachmann.
160-44592 Nickel Silver Rail & Gray Roadbed pkg(10)
Reg. Price: \$22.00
Sale: **\$14.98**



Build Your Own Wishlist!
www.walthers.com



HO Your First Railroad Track Pack - E-Z Track
Bachmann. Forty-three piece set includes curves, straight sections, remote switches and more. Comes with instructional DVD.
160-44596 For 4 x 8 Layout
Reg. Price: \$285.00
Sale: **\$189.98**



HO Cork Roadbed
Busch.
189-7501 8'3" Long x 3/16" Thick 2.5m x 5mm pkg(5)
Reg. Price: \$19.99 Sale: **\$15.98**

HO Buda Wheel Stop
Custom Finishing.
247-171 pkg(2)
Reg. Price: \$8.95 Sale: **\$7.98**



HO Code 70 Dual Gauge HO/HOn3 Flex-Track™
Micro Engineering.
255-10110 Nonweathered 3' Section pkg(6)
Reg. Price: \$44.70 Sale: **\$39.98**



HO Code 83 Ladder Track System Turnout
Micro Engineering.
255-14710 #5a Left Hand Standard
255-14711 #5a Right Hand Standard
255-14712 #5b Left Hand Curved Diverging Track
255-14713 #5b Right Hand Curved Diverging Track
Reg. Price: \$23.95 Sale: **\$21.98**
255-14714 #5c Left Hand Lead Ladder
255-14715 #5c Right Hand Lead Ladder
Reg. Price: \$26.95 Sale: **\$23.98**
255-14716 #5d Left Hand Intermediate Ladder
255-14718 #5e Left Hand Last Ladder
255-14719 #5e Right Hand Last Ladder
Reg. Price: \$28.95 Sale: **\$25.98**



Limited Quantity Available
HO World's Greatest Hobby Track Pack - Unitrack
Kato. Fits a 4 x 8' area and includes 4 manual turnouts, straight and curved sections, feed track, rerailer and adapter cord.
381-3103 For 4 x 8' Layout
Reg. Price: \$260.00
Sale: **\$209.98**



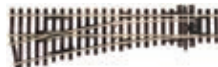
HO Code 100 Curved Double Radius Turnout - Setrack
Peco.
552-244 Right Hand, Insulfrog
552-245 Left Hand, Insulfrog
Reg. Price: \$34.99 Sale: **\$27.98**



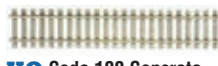
HO Code 100 Curved Double Radius Turnout - Streamline
Peco.
552-1042 Right Hand, Insulfrog
552-1043 Left Hand, Insulfrog
Reg. Price: \$31.99 Sale: **\$24.98**



HO Code 100 Large Radius Turnout - Streamline
Peco.
552-1044 Right Hand, Insulfrog
552-1045 Left Hand, Insulfrog
Reg. Price: \$29.99 Sale: **\$23.98**



HO Code 100 Small Radius Turnout - Streamline
Peco.
552-1047 Right Hand, Insulfrog
552-1048 Left Hand, Insulfrog
Reg. Price: \$23.99 Sale: **\$18.98**



HO Code 100 Concrete Tie Flex Track - Streamline
Peco.
552-1162 36" 91.4cm Section
Reg. Price: \$6.80 Sale: **\$5.60**

HO North American-Style Code 83 #7 Curved Turnout - Streamline
Peco.
552-SL8377 Left Hand, Insulfrog
Reg. Price: \$42.99
Sale: **\$33.98**



HO North American-Style Code 83 #8 Turnout - Streamline
Peco.
552-SL8381 Right Hand, Insulfrog
Reg. Price: \$42.99
Sale: **\$33.98**



HO North American-Style Code 83 #5 Turnout - Streamline
Peco.
552-SLE8351 Right Hand, Electrofrog
Reg. Price: \$36.99 Sale: **\$28.98**



HO North American-Style Code 83 #6 Turnout - Streamline
Peco.
552-SLE8361 Right Hand, Electrofrog
552-SLE8362 Left Hand, Electrofrog
Reg. Price: \$36.99 Sale: **\$28.98**



HO Code 100 Double Slip Turnout - Streamline
Peco. Nickel-silver rail for excellent conductivity and insulated plastic frog for easier wiring.
552-90 Insulfrog
Reg. Price: \$80.99 Sale: **\$63.98**

WARNING: Cancer and Reproductive Harm - www.P65Warnings.ca.gov. See page 27.

HO SCALE | TRACK



HO Code 75 Wooden Tie Flex Track - Streamline
Peco.
552-1163 36" 91.4cm
Section
Reg. Price: \$7.60 Sale: **\$6.00**



HO Code 100 Wooden Tie Flex Track - Streamline
Peco.
552-11603 36" 91.4cm
Section
Reg. Price: \$7.20 Sale: **\$5.60**

**SO MANY PRODUCTS
SO LITTLE SPACE!**

FIND MORE ONLINE NOW!

1. Go to www.walthers.com/monthly-flyer
2. Click View Flyer Online
3. Page through, shop, enjoy!

**Limited
Quantity
Available**

**HO
Turnout
Motor
(Switch
Machine) -
RailCrew**



Rapido.
Perfect for bigger layouts, this multi-pack of RailCrew Switch Machines is complete with a variety of add-on plastic and photo-etched details for easy customizing. Each Machine measures 1-1/8" 2.85mm diameter x 1" 2.5cm.
606-320101 Single
Reg. Price: \$21.95 Sale: **\$18.98**
606-320102 pkg(6)
Reg. Price: \$119.95 Sale: **\$99.98**
606-320103 pkg(12)
Reg. Price: \$229.95
Sale: **\$199.98**



HO Rail-It
Rix.
628-2 For Code 70, 83 & 100 Track
Reg. Price: \$3.95 Sale: **\$3.49**



HO Switch Stand
Rix.
628-13 Kit
Reg. Price: \$4.45 Sale: **\$3.98**



HO Track-Bed Roadbed Material
Woodland Scenics.
785-1471 Standard Track Profile pkg(12)
Reg. Price: \$13.99 Sale: **\$10.98**



HO Track-Bed Roadbed Material
Woodland Scenics.
785-1474 Continuous Roll - 24' 7.3m
Reg. Price: \$13.99 Sale: **\$10.98**

HO SCALE | SIGNALS



HO Modern Cantilever Grade Crossing Signal
Walthers SceneMaster™.
949-4330 Two-Lane
Reg. Price: \$44.98 Sale: **\$33.98**



HO Post-1960s Cantilever Grade Crossing Signal
Walthers SceneMaster.
949-4332 Single-Lane
Reg. Price: \$31.98 Sale: **\$26.98**



HO Crossing Flashers
Walthers SceneMaster.
949-4333 Set of 2 Working Signals (Use with Crossing Signal Controller)
Reg. Price: \$29.98 Sale: **\$25.98**



HO Custom Railroad Crossbucks
JL Innovative Design.
361-845 pkg(2)
Reg. Price: \$6.98 Sale: **\$5.98**

HO SCALE | STRUCTURES



HO Bridge Pier for Double-Track Truss Bridge
Walthers Cornerstone®.
933-1041
5-3/8 x 1-1/8 x 3-3/8"
13.7 x 2.9 x 8.6cm
Reg. Price: \$16.98 Sale: **\$12.98**



HO Abutment Wings for Double Track Truss Bridge
Walthers Cornerstone.
933-1042 3-3/4 x 3-3/8"
9.5 x 8.6cm
Reg. Price: \$11.98 Sale: **\$9.99**



HO Diesel Fueling Facility
Walthers Cornerstone.
933-2908 Kit
Reg. Price: \$31.98 Sale: **\$26.98**



HO Greatland Sugar Refining
Walthers Cornerstone.
Includes 3-story processing plant, boilerhouse with tall smokestack, warehouse and track insert.
933-3092 Kit
Reg. Price: \$69.98 Sale: **\$46.98**



HO Allied Rail Rebuilders
Walthers Cornerstone.
933-3016 Kit - 10 x 10 x 6"
25.4 x 25.4 x 15.2cm
Reg. Price: \$44.98 Sale: **\$37.98**



HO Propane Tanks
Walthers Cornerstone.
933-3129 Kit - Each: 9 x 1-1/2" 22.8 x 3.8cm
pkg(2)
Reg. Price: \$19.98 Sale: **\$16.98**



HO Railway Express Agency (REA) Transfer Building
Walthers Cornerstone.
933-3095 Kit - 13-1/8 x 6-1/8 x 6-3/8"
32.8 x 15.5 x 15.9cm
Reg. Price: \$49.98 Sale: **\$42.98**



HO Miss Bettie's Diner
Walthers Cornerstone.
933-2909 Kit - 6 x 2-7/8 x 1-5/8"
15.2 x 7.3 x 4.1cm
Reg. Price: \$39.98 Sale: **\$33.98**