



---

Patrick van Vegchel - 13/05/2015

---

Partners Day

GoDEX / LEOSS

13/05/2015

- + **About GoDEX:**
  - company profile
  - philosophy & strategy
- + **GoDEX product Portfolio**
  - product u.s.p.
  - applications, references
  - competition
  - questions and answers
- + **Demonstration**
  - GoLABEL
- + **“Open House”**



# About GoDEX

## Company Profile

- + Who we are
- + Mission Statement
- + Milestones, Certifications, Awards
- + GoDEX Offices
- + GoDEX & Leoss for you!



# Who we are.

(GoDEX in three sentences)

Established in 1993, with its headquarters in Taipei Taiwan, **GoDEX** International is an engineering company that specializes in designing and manufacturing barcode printing products that lead the industry in the value price, high performance category. **GoDEX** has offices in the US, Europe and China and its products are distributed world-wide.

**GoDEX** has created its success and earned a loyal following of thousands of customers by providing very affordable products that are well engineered and supported by a company and a partner network that is 100% dedicated to long-term customer satisfaction.



# Mission Statement



To blend true customer focus with engineering inspiration, and to practice disciplined continuous improvement to create the industry's most affordable, value-packed barcode printers that are supported by customer service that is as caring as it is fast.

# Milestones

**1993**

Formation of GoDEX Taiwan

**1995-1996**

GoDEX products represented under the C.ITOH brand name in USA, Europe and Japan

**1996-1997**

GoDEX products are chosen to be implemented in a automated ticket booth system by Walt Disney (USA)

**1998-1999**

300 DPI printer's are added to the product range  
Established GoDEX China office

# Milestones continued

## ● 2000-2001

GoDEX launches first industrial printer model EZ-4000 Series

GoDEX achieves ISO 9001-2000 certification

## ● 2002-2003

GoDEX new product Plus series introduced to market in June

GoDEX introduce the EZ-2000 Series

## ● 2004-2008

Introduced the PLUS series to the market

Established GoDEX Europe subsidiary

## ● 2009-2011

Established GoDEX Americas subsidiary

# Milestones continued

## 2012

On March 21st. 2012, **GoDEX** was listed on OTC in Taiwan GTSM stock market. (Trading Code: TW. 4987)

## 2013

RT200i & RT700i series Desktop Barcode printer received the 2013 Taiwan Excellence Award

Received the ISO 9ISO 14001: 2004 Certification

## 2015

ZX1000i & T20 & MX20 & MX30i received the 2014 Taiwan Excellence Award



# Certifications/ Awards



GOOD DESIGN  
PRODUCT AWARD



Innovation  
Research Award



ISO9001: 2008

ISO14001: 2004

Taiwan Excellence Awards

Good Design Product

Innovation Research Award

2009 Rising Star Award





GoDEX Americas, Established in 2009



GoDEX Worldwide Headquarters,  
Taiwan, Established in 1993



GoDEX China, Established in 2009



GoDEX Europe, Established in 2008



# GoDEX & LEOSS for you !

- Stocking all items
- Warranty & Tech Support
- Sales & Marketing Support
- Favorable distribution policy
- Short lines to **GoDEX** Taiwan



GoDEX Europe, Established in 2008

# About GoDEX

## Philosophy & Strategy

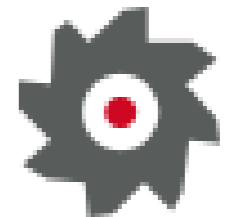
- + Towards the end user
- + Towards the channel
- + Protecting your interests
- + Strategy in Slovenia
- + Why choose GoDEX?



# End User Benefits

(Your GoDEX U.S.P)

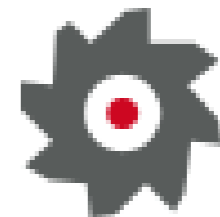
- ✓ LOW COST
- ✓ HIGH PERFORMANCE
- ✓ ROBUST
- ✓ 3 YEARS WARRANTY
- ✓ EASY INSTALLATION AND USAGE
- ✓ EXCELLENT EPL/ZPL EMULATION
- ✓ POWERFUL FREE LABEL SOFTWARE
- ✓ FLEXIBLE SUPPORT ON SPECIAL REQUESTS



# Your Benefits

(How GoDEX helps to grow your business and your profitability)

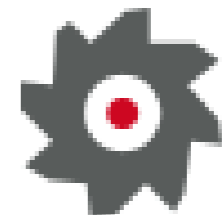
- ✓ HIGH PROFIT MARGINS
- ✓ WIDE PRODUCT RANGE
- ✓ 3 YEARS WARRANTY (parts)
- ✓ COMPETITIVE PRICING **(no price increase !!)**
- ✓ RELIABLE PRODUCTS / END USER SATISFACTION
- ✓ EASY INTEGRATION (epl, zpl, linux, etc.)
- ✓ EXCELLENT TECH SUPPORT BY LEOSS
- ✓ CLOSE COOPERATION (TECHN.&COMM.) IN PROJECTS
- ✓ SHORT LINES TO MANUFACTURER/FLEXIBILITY



# Protecting your interests

(How GoDEX secures your benefits)

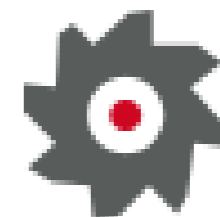
- ✓ NO "OVERDISTRIBUTION"/HEALTHY COMPETITION ONLY
- ✓ NO COOPERATION WITH MAJOR MULTINATIONAL DISTRIBUTORS
- ✓ PROJECT DEALS
- ✓ ONGOING DEVELOPMENT OF NEW PRODUCTS
- ✓ ONGOING DEVELOPMENT OF NEW SOFTWARE TOOLS



# GoDEX' Strategy in Slovenia

(Your opportunities with GoDEX)

- ✓ TARGET THE "MAJOR BRANDS"
- ✓ BEING BOTH BETTER AND CHEAPER THAN THE COMPETITION
- ✓ NEW SUPERIOR SOLUTIONS (E.G. STANDALONE, HEALTHCARE)
- ✓ WORKING THROUGH LEASS ONLY, NO OVER-DISTRIBUTION
- ✓ WORKING WITH SPECIALIST DEALERS / INTEGRATORS IN VARIOUS VERTICAL MARKETS





# Why choose GoDEX?



- ✓ Affordable end user prices
- ✓ **High reseller margins**
- ✓ **Wide product range**
- ✓ **Excellent performance & durability**
- ✓ **3 Years warranty**
- ✓ **Excellent alternative for over-distributed brands**
- ✓ EPL & ZPL emulation auto detection
- ✓ Outstanding customer service
- ✓ Flexible to meet your specific needs

# Products, Applications, References

- + Overview
- + Desktop Printers
- + Industrial Printers
- + Mobile Printers
- + Solutions
- + Scanners
- + TTR
- + Barcode Design Software



# DT & G Economy Series



**DT2X**



**DT4X**



**G300/330**



**G500/530**



**G525/535**



**EZPi1200/1300**

## RT Series High Performance Series



RT200/230



RT200i/230i



RT700/730



RT700i/730i



RT860i



## EZ, Ezi, and ZX Series



**EZ Series**



**Ezi Series**



**EZ6000 Series**



**ZXi Series**

## MX Series

- IP 42 /54
- robust
- easy to use



MX20

MX30



MX30i

# DT & G Economy Series USP



Type	DT2X	DT4X	G300	G500/G530/G525/ G535	EZPi1200/1300
Print Width and modes	2" Direct Thermal	4" Direct Thermal Thermal Transfer	4" Direct Thermal Thermal Transfer, 1/2" TTR cores	4" Direct Thermal Thermal Transfer	4" Direct Thermal Thermal Transfer
Resolution	203 dpi	203 / 300 dpi,	203 / 300 dpi	203 / 300 dpi	203 / 300 dpi
Speed	Up to 7ips	Up to 7ips	Up to 4ips	Up to 5ips	Up to 6ips
USP all	3years warranty; USB, RS232, LAN standard;	3years warranty; USB, RS232, LAN standard	3years warranty; USB, RS232, LAN standard	3years warranty; USB, RS232, LAN standard	3years warranty; USB, RS232, LAN standard
USP	small footprint; low price	small footprint; low price	small footprint; low price	300m TTR roll, extremely durable, twin sensor	300m TTR roll, extremely durable, display, PS2 port
USP	Options: cutter, peeler, parallel port, RTC	Options: cutter, peeler, parallel port, RTC		Options: cutter, peeler, parallel port	Options: cutter, peeler, parallel port, RTC, WIFI
Competition	LP2824, TDP225	GC420d, GK420d, GX420d, TDP247	GC420t, GK420t, TTP244CE	GK420t, GX420t, PF8t, TTP244PRO	GX420t, PC43T, TTP247

# DT & G Economy Series Competition

				
DT2X (7ips) € 338,00	DT4X (7ips) € 390,00	G300 € 406,00	G500/G530/G525/G535 € 399,- / € 428,-	EZPi1200/1300
Zebra LP2824	Zebra GC420D	Zebra GC420T	Zebra GK420T	n.a.
				
€ 370,00	€ 385,00 excl. LAN	€ 470,00 excl. LAN	€ 510,00 no LAN	
TSC TDP-225	Zebra GX420D	Zebra GK420T	Zebra GX420T	n.a.
				
€ 375,00 incl. LAN	€ 575,00 excl. LAN	€ 510,00 excl. LAN	€ 650,00 excl. LAN	
	TSC TDP-247	TSC TTP-244PRO	TSC TTP-345C	n.a.
				
	€ 479,00 incl. LAN	€ 367,00 no LAN	€ 416,00 no LAN	



# 2014 Projects – Dascom

## DT2X branded – Hospitals

Application:  
-Laboratories



## DT2X branded for



Applications:

-production lines  
-logistics



# 2015 Project - Wincor Nixdorf

## DT2X for DEICHMANN

4800 printers in 2015 /2016

Application:

POS Label Printer



**GoDEX**



# 2014/2015 Projects - Zoller

## DT4X and DT2X for Zoller

- 1600 pcs DT4X annually
- 200 pcs DT2X annually



## Application:

- For use with measuring equipment



# 2015 Projects – Unicode

## G525 to replace PF8T and PC4

- 300 printers & cutters in 2015
- 1200 printers & cutters in 2016-2017



## Application:

- Manufacturing in automotive sector
- Care label printing for airbags, seats, safety belts etc.
- Used in Skoda, VW, Volvo, Ford, Nissan, Toyota, etc.

# 2014/2015 Projects Megasonic

## Polish Post & Polish Railways

- DT4X
- EZ2250i
- MX30





# RT Series High Performance Series USP



Type	RT200/230	RT200i/230i	RT700/730	RT700i/730i	RT860i
Print Width and modes	2" Direct Thermal Thermal Transfer ½" TTR core 110m	2" Direct Thermal Thermal Transfer ½" TTR core 110m	4" Direct Thermal Thermal Transfer, 300m TTR	4" Direct Thermal Thermal Transfer, 300m TTR	4" Direct Thermal Thermal Transfer, ½" TTR core 150m
Resolution	203 / 300 dpi	203 / 300 dpi,	203 / 300 dpi	203 / 300 dpi	600dpi
Speed	Up to 5ips	Up to 7ips	Up to 5ips	Up to 7ips	Up to 3ips
USP All	3years warranty; USB, RS232, LAN, RTC standard; C- button	3years warranty; USB, RS232, LAN, RTC standard; C- button	3years warranty; USB, RS232, LAN, RTC standard; C- button	3years warranty; USB, RS232, LAN, RTC standard; C- button	3years warranty; USB, RS232, LAN, RTC standard, C- button
USP	small footprint full range sensor, easy platen change	small footprint, extremely high performance, USB host, display, full range sensor, easy platen change	300m TTR, full range sensor, long flat label path, easy platen change	300m TTR roll, extremely high performance, USB host, display, full range sensor, easy platen change, BT interface option	600dpi desktop, price, touch screen, small footprint, full range sensor, WIFI option, etc.
Competition	TLP2428, TTP225	n.a.	GX420t,	TX200/300	TX600

# RT Series High Performance Series Competition

				
RT200/RT230	RT200i/RT230i	RT700/730	RT700i / RT730i	RT860i
€ 399,00	€ 543,00	€ 450,00	€ 625,00	
Zebra TLP2824P	n.a.	Zebra GX420T	Zebra GX420T +KDU >€ 925,00	TX600
				
€ 450,00 no LAN		€ 650,00 excl.LAN		
TSC TTP-225	n.a.	Zebra GK420T	Intermec PC43T	
	TSC 2" standalone solution >€ 663,00			
€ 415,00 incl. LAN		€ 510,00 excl. LAN		
		TSC TTP-345C	TSC TTP-247 + KDU >€ 819,00	
				
		€ 416,00 no LAN		

# 2015 Projects – B&M Tricon

**RT200 for B&M Tricon's project "Schuh und Leder" (shoe and leather)**

- 350 printers in 2015



## **Application:**

- Retail Logistics/POS
- Labeling of Shoe boxes



# Europe 2015 Projects – AJK

## RT700i and GS550 for Kiefel Machine Manufacturer

- 400 printer in 2015
- 400 scanners in 2015



### Application:

- Stand alone
- To be delivered to their customers with the sealing and forming equipment they produce

**GoDEX**

# 2015 Projects – Paperdrive

## RT860i for Jewelry retail chain Thomas Sabo

- 45 printers in 2015



### Application:

- POS
- Small Jewelry labels



# GoDEX Industrial Series USP



Type	EZ2050/2150	EZ2250i/2350i	EZ6200P/6300P	ZX1200i/1300i	ZX1600i
<b>Print Width and modes</b>	4" Direct Thermal Thermal Transfer 450m TTR	2" Direct Thermal Thermal Transfer 450m TTR	6" Direct Thermal Thermal Transfer 450m TTR	4" Direct Thermal Thermal Transfer 450m TTR	4" Direct Thermal Thermal Transfer 450m
<b>Resolution</b>	203 / 300 dpi	203 / 300 dpi,	203 / 300 dpi	203 / 300 dpi	600dpi
<b>Speed</b>	Up to 6ips	Up to 7ips	Up to 7ips	Up to 10ips	Up to 4ips
<b>USP All</b>	3years warranty; USB, RS232, LAN, very robust	3years warranty; USB, RS232, LAN, very robust	3years warranty; USB, RS232, LAN,; very robust	3years warranty; USB, RS232, LAN, RTC standard; very robust	3years warranty; USB, RS232, LAN, RTC standard, C- button; very robust
<b>USP</b>	low price, but same robustness and label output like truly industrial machines, very easy TPH change	Extremely well price/performance ratio, easy navigation display, USB host, RTC standard; C-button; very easy TPH change	Low price for 6"printer, easy to use, RTC standard, very easy TPH change	Extremely well price/performance ratio, touch screen, 3x USB host, RTC standard; C-button; small footprint, WIFI option	Best 600dpi industrial printer price around, touch screen, small footprint, WIFI option, 3x USB host, RTC standard
<b>Competition</b>	ZT220/230	ZT400	ZT600 TTP2240M	ZT400TTP2240M	ZT400

# GoDEX Industrial Series Competition



**EZ2050/2150**

€ 895,00



**EZ2250i/2350i**

€ 1095,00



**EZ6200P/6300P**

€ 2.350,00



**ZX1200i/1300i**

€ 1335,00



**ZX1600i**

€ 1895,00

**Zebra ZT220/230**



€ 850 - € 1190,-

**Zebra ZT230/ZT4X0**



€ 1190 - € 1495,-

**Zebra ZM600**



€ 2.940,-

**Zebra ZT4X0**



€ 1.495,-

**Zebra ZT4X0  
600dpi**



€ 2.990,-

**TSC ME240**



€ 895,00

**TSC TTP-246M PRO**



€ 945,00 excl. LAN

**TSC TTP-268M**



€ 2.025 excl. LAN

**TSC TTP-2410M**



€ 1.365,-

**TSC TTP-644M**



€ 2.095,-

**Datamax I class**





# 2015 Projects – Microplex

## EZ2350i with Microplex PCL5 controller for VOLKSWAGEN GROUP

- 250 printers in 2015



### Application:

- Manufacturing
- SAP environment



**Volkswagen**



**GoDEX**

# 2015 Projects – PSN

## ZX1200i for retail chain METRO

- 220 printers in 2015

### Application:

- Warehousing
- Retail labels





# 2015 Projects – Vonalkod



ZX1600i for Samsung television production lines in Hungary

- 20 printers in 2015
- Door opening project



# MX Mobile Series U.S.P. & Competition



IP54

MX20BT € 435,-	MX30BT € 490,-	MX30iBT € 535,-
	MX30BT/WF € 585,-	MX30iBT/W € 630,-

Zebra QLN-220



€ 810,00

Zebra QLN-320

€ 900,00  
€ 1.050,00

Zebra QLN-320

€ 900,00  
€ 1.050,00

Robust

Higher Margin

Easy to use



TSC Alpha 3R

BT € 485,-

WIFI 610,-

Receipts only!

TSC Alpha 3R

BT € 485,-

WIFI 610,-

Receipts only!

Bixolon SPP-R200II



€ 495,00 (BT)

€ 575,00 (WIFI)

Bixolon SPP-R300

€ 535,00 (BT)

€ 615,00 (WIFI)

Bixolon SPP-R300

€ 535,00 (BT)

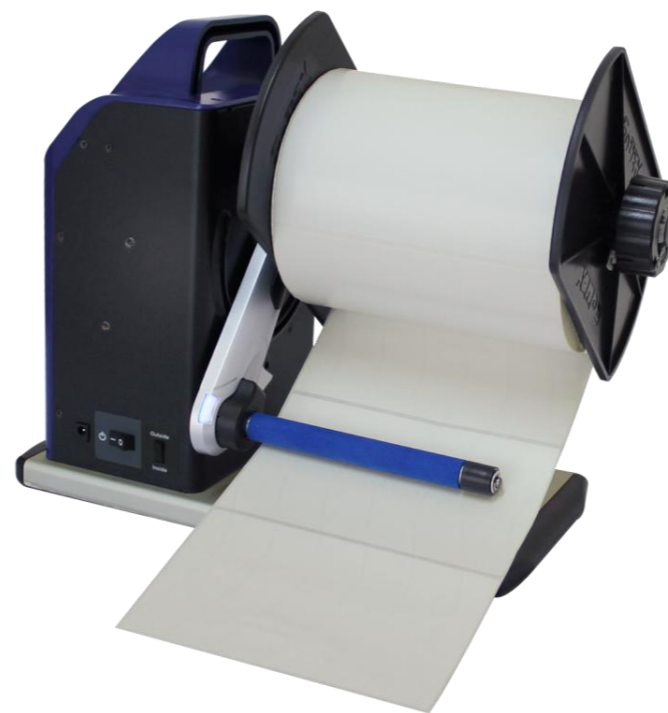
€ 615,00 (WIFI)



## Accessories: un- and rewinders



T10 Rewinder

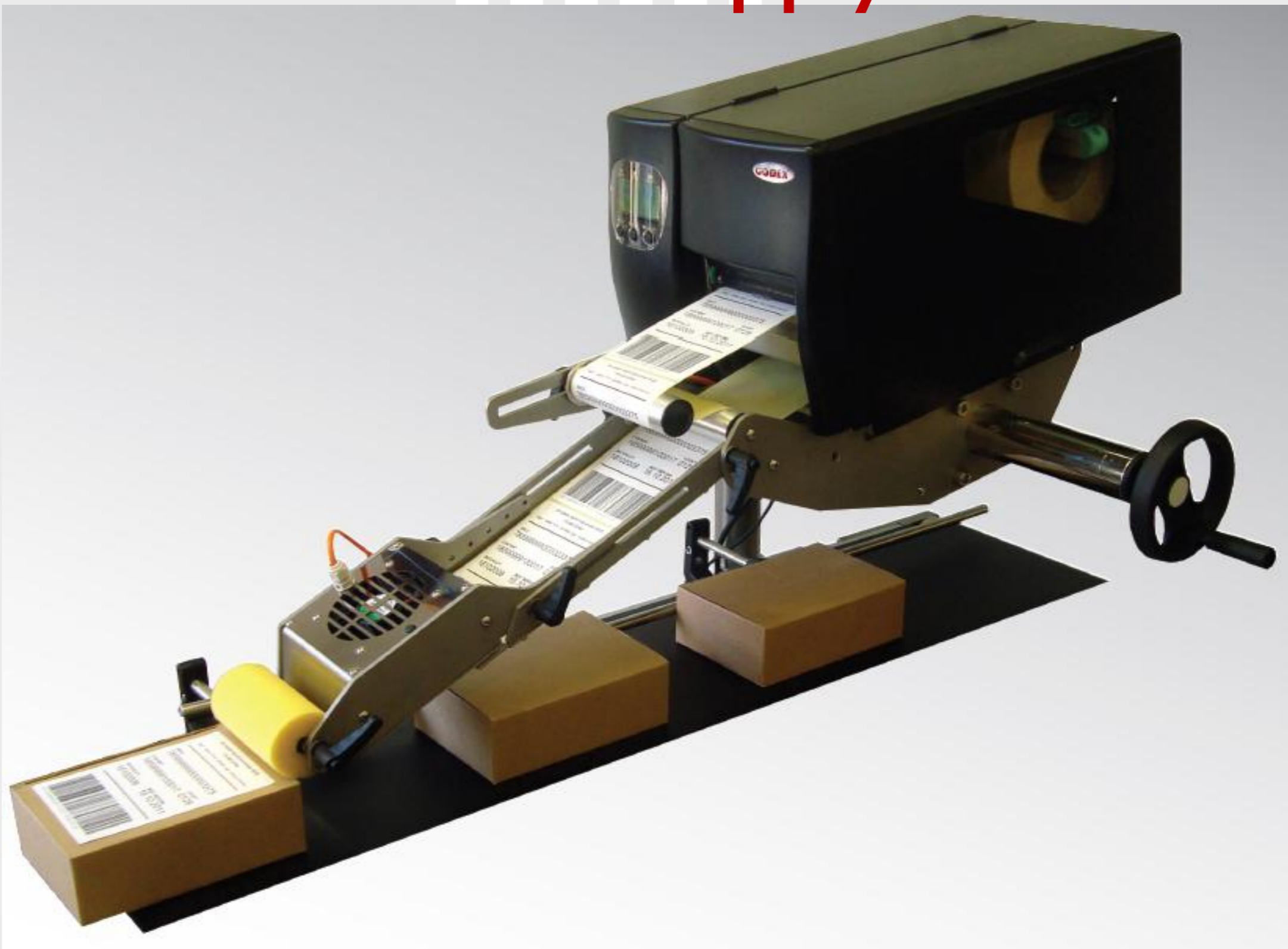


T20 Rewinder



Unwind Stand

# AG2000 Print & Apply Solution





# Scanners



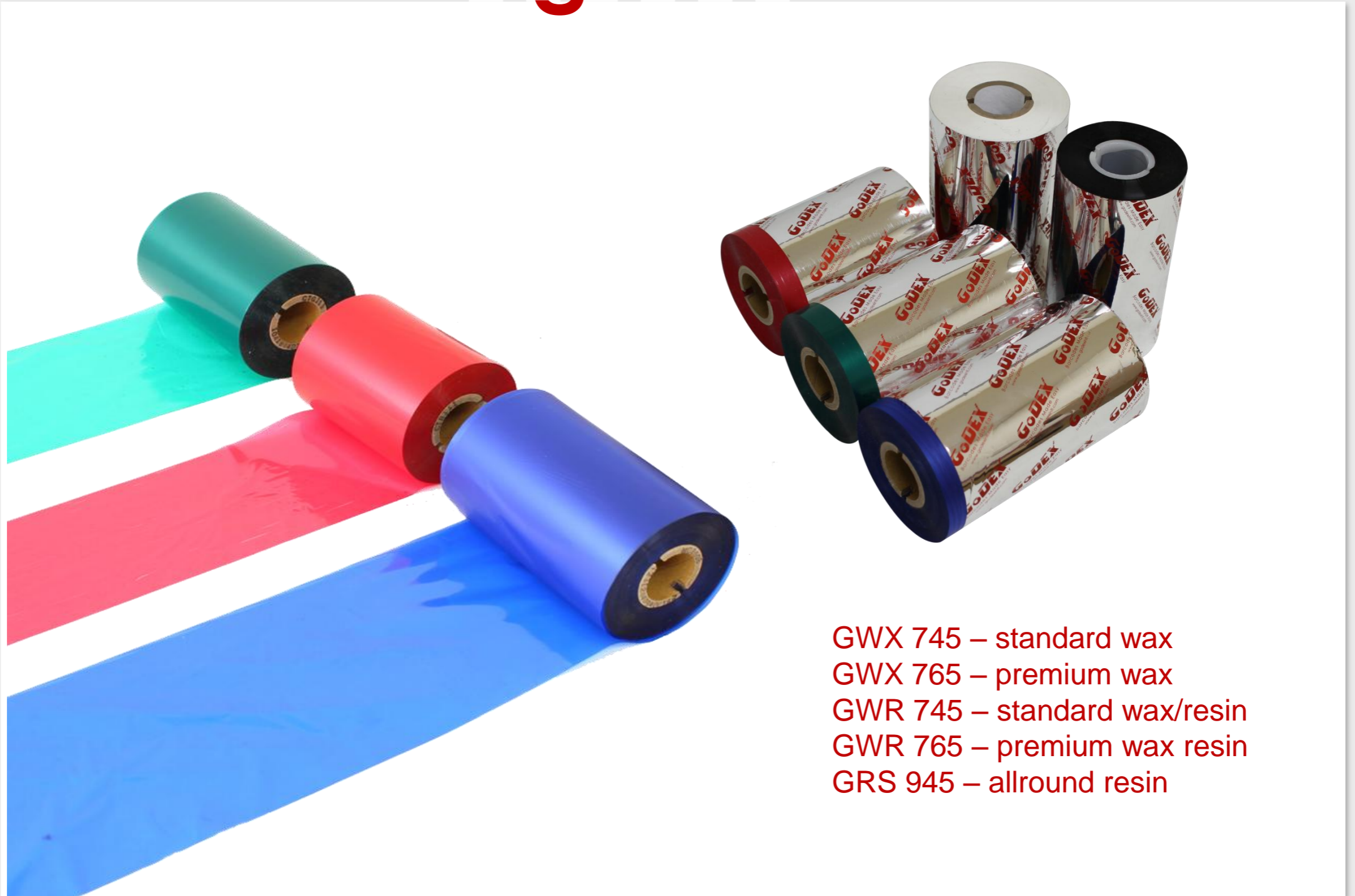
GS550



GS220



# Coming Soon: TTR



- GWX 745 – standard wax
- GWX 765 – premium wax
- GWR 745 – standard wax/resin
- GWR 765 – premium wax resin
- GRS 945 – allround resin

# Pipeline 2015

- RT700iW (RT700i with WIFI)
- 300dpi DT Wristband Printer
  - Cutter Stacker
  - Tamp Applicator
  - Bottle Applicator

# Free Powerful Label Software GoLabel

The image displays the GoLabel software interface (V1.07) with a label design and a printer setup dialog. The main window shows a label design with the GoDEX logo, a QR code, a barcode with the number (01)12345678900005, and text in Arabic (العربية), Russian (русский), Chinese (中文), and Turkish (Türk). The interface includes a toolbar, a Command Area, and a Shape palette. The printer setup dialog is open, showing settings for Printer Model (G500), Resolution (203), Darkness (18), Speed (2), Stripper/Applicator (0 (None)), Labels per Cut (0), Printing Mode (Direct Thermal), and Tear-off Position (mm) (0). It also includes options for Rotating 180 degrees and setting the number of copies and labels.

**Printer Setup**

Printer Setup    Printer Interface

Printer Setup

Printer Model: G500

Resolution: 203

Darkness: 18

Speed: 2

Stripper/Applicator: 0 (None)

Labels per Cut: 0

Printing Mode: Direct Thermal

Tear-off Position (mm): 0

Rotate 180°

1 Copies of Label

Fix Number 1     Database

2 Number of Labels

Fix Number 1     Database

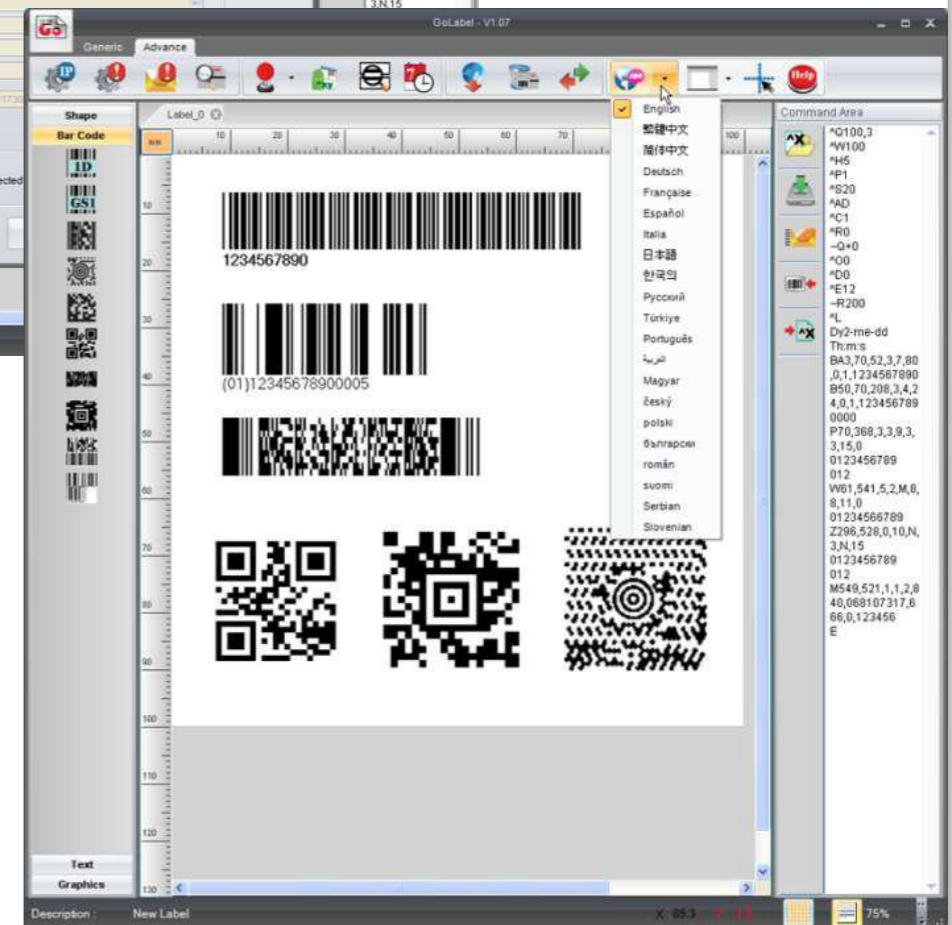
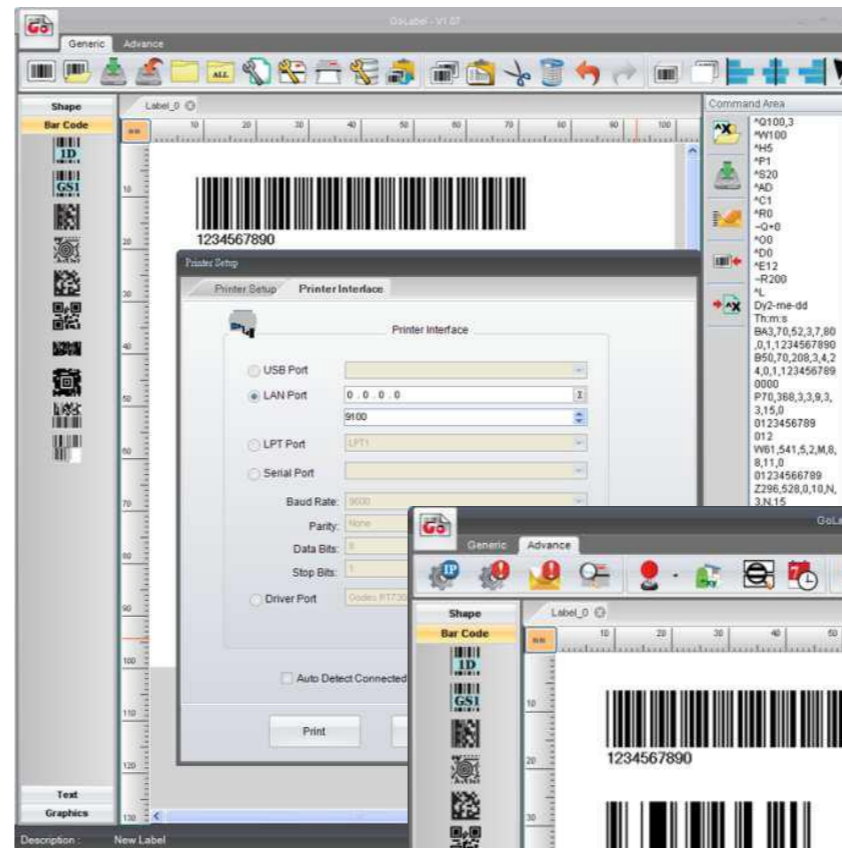
Print    Save    Exit



# Free Powerful Label Software GoLabel

## Free downloadable Software

- free and powerful label design software
- "What You See is What You Get" design interface
- Database connectable
- Multilingual
- Download labels, graphics and to printer
- Command code generation





# Questions?



# Thank You!





**GoDEX**

Barcodes Made Easy