

# Patterns

SEWING  
PATTERNS AND  
PATTERN  
ENVELOPS



## Understanding the Pattern

A pattern is to a person making a garment what a blueprint is to a carpenter building a house.

The pattern shows the what, when and how. Just like a blueprint, a pattern gives you a basic plan. This helps you successfully build or put together a product—a garment.

A **pattern** includes tissue paper pieces to follow when cutting out your fabric. It also includes step-by step instructions for constructing the garment or item. With the help of a pattern, you can buy all the supplies and cut, mark, and sew your garment successfully.

Patterns also can give you ideas about styles, fashions and possible fabrics and accessories.

**Your pattern has three main parts:**

1. Envelop front and back.
2. Cutting and sewing instructions.
3. Tissue pattern pieces.

# The Pattern Envelope



**1776**  
10 PIECES



WISSES / MISS PETITE LINED DRESS WITH NECKLINE, SLEEVE AND POCKET VARIATIONS		JEUNE FEMME/PETITE JEUNE FEMME ROBE AVEC COUPE D'ENCOLURES, MANCHES ET POCHES	
<b>Fabrics:</b> Pique, Twill, Satin, Velveteen, Denim, Crêpe, Crêpe Back Satin, Silk Linen, Lightweight Wool and Wool Blends, Lace, Brocade, Sateen, Shantung, Tulle, Velvet, Linen and Linen Blends, Sequined Fabrics, Neck Binding and Flap also in Synthetic Leather. Extra fabric needed to match plaids, stripes or one-way design fabrics.		<b>Tissus:</b> Piqué, Twil, Satin, Velours de Satin, Denim, Crêpe, Crêpe de Satin, Mélangé Soie et Lin, Laine Laines légers, Dentelle, Brocat, Satin, Shantung, Tulle, Velours, Lin et Mélanges de Lin, Tissus Pailletés. Bordure d'encolure et du Rabat en Cuir Synthétique aussi. Prévoyez davantage de tissu pour raccorder les encolures, les rayures ou les motifs unidirectionnels.	
<b>Notions:</b> Thread, one 22" invisible or openly zipper, two 1" to 1 1/4" buttons (opt.). Look for Simplicity notions and Wiggins™ Trims.		<b>Merciérie:</b> Fil, une glissière invisible ou fantaisie de 55cm, deux boutons de 2.5cm à 3.2cm (facult.). Demandez la mercerie de Simplicity et les garnitures de Wiggins™ Trims.	
<b>BODY MEASUREMENTS (For Sizing Help Visit <a href="http://www.simplicity.com">www.simplicity.com</a>)</b> Bust 29 30 31 32 34 36 38 40 42 44 Waist 22 23 24 25 26 28 30 32 34 * Hip-5" below waist		<b>MESURES NORMALISÉES</b> Poitrine 75 78 80 83 87 92 97 102 107 112 Taille 56 58 61 64 67 71 76 81 87 * Manches (23cm au-dessus de la taille)	
Back-neck to waist 31 3/4 32 3/4 33 3/4 34 3/4 36 3/4 38 3/4 40 42 44 * Pattern Size 4 6 8 10 12 14 16 18 20 Sizes-European 30 32 34 36 38 40 42 44 46		Dos (encolure à taille) 40 83 85 88 92 97 102 107 112 cm Dos (encolure à taille) 38.5 39.5 40 40.5 41.5 42 42.5 43 44 cm Tailles 4 6 8 10 12 14 16 18 20 Tailles-Françaises 32 34 36 38 40 42 44 46 48	
<b>Welcome to inspired by Project Runway™.</b> With this pattern you can feel like you are in a design studio. Each "design element" has a separate yardage so that you can rise to the challenge and make it work!		<b>Bienvenue à notre série inspirée de Project Runway™.</b> Grâce à ce patron vous aurez l'impression d'être dans un studio de stylistes. Chaque "élément de couture" comporte des métrages séparés vous permettant de créer un modèle sensationnel!	
<b>Dress with Scoop or Round Neckline including Pockets</b> 45" 1 1/4 1 3/4 1 3/4 2 1/4 2 1/4 2 1/4 2 1/4 2 1/4 2 1/4 2 1/4 2 1/4 2 1/4 60" 1 3/4 1 3/4 1 3/4 1 3/4 1 3/4 1 3/4 1 3/4 1 3/4 1 3/4 1 3/4 1 3/4 1 3/4 1 3/4 Lining 1 1/4 1 1/4 1 1/4 1 1/4 1 1/4 1 1/4 1 1/4 1 1/4 1 1/4 1 1/4 1 1/4 1 1/4 1 1/4 Interfacing: 3/4 yd. of 20" to 25" lightweight fusible, such as Pellon®		<b>Robe avec Encolure ronde ou Décolleté arrondi et Poches</b> 115cm 1.30 1.40 1.50 1.50 1.50 1.50 2.10 2.10 2.10 * 150cm 1.10 1.10 1.10 1.10 1.10 1.10 1.10 1.10 1.10 1.10 1.10 1.10 1.10 * Doublure 115cm 1.10 1.10 1.10 1.10 1.10 1.10 1.10 1.10 1.10 1.10 1.10 1.10 1.10 * Entoilage: 0.50m de 51cm à 64cm, léger, thermocollant tel que Pellon®	
<b>Designer's Additions:</b> Sleeve: 1/4 yd. of 45" or 60" Chart Sleeve: 1/4 yd. of 45" or 60" Flap: 1/4 yd. of 45" or 60" Interfacing: 1/4 yd. of 20" to 25" lightweight fusible, such as Pellon®		<b>Détails de Style:</b> Manche - 0.70m de 115cm ou 150cm Doublure de la Manche - 0.70m de 115cm Manche courte - 0.40m de 115cm ou 150cm Doublure de la Manche - 0.40m de 115cm Rabat - 0.20m de 115cm ou 150cm Entoilage - 0.20m de 51cm à 64cm, léger, thermocollant tel que Pellon®	
<b>Finished Garment Measurements (Includes Design and Wearing Ease)</b> Dress Bust 33 34 35 36 37 38 39 40 41 42 43 44 45 Finished back length from base of neck Dress 33 34 35 36 37 38 39 40 41 42 43 44 45 Dress Width 40 41 42 43 44 45 47 49 51 53 *		<b>Bordure d'Encolure Contrastante - 0.80m de 115cm ou 150cm</b> Bordure fantaisie pour l'encolure et la poche - 1.40m de 2.5cm de large.	
<b>MEASURES DES VÊTEMENTS FINIS</b> Robe Poitrine 81.5 84 86.5 89 92.5 96 100 106 111 116 cm Longueur (fin de dos depuis la base du cou) Robe 84 86.5 89 91.5 95 100.5 106 111 116 cm Largeur de la Robe 103 106 108 111 115 120 125 130 135 *		*sans bretelles **avec bretelles ***avec ou sans bretelles	

## The Front of the Pattern Envelope:

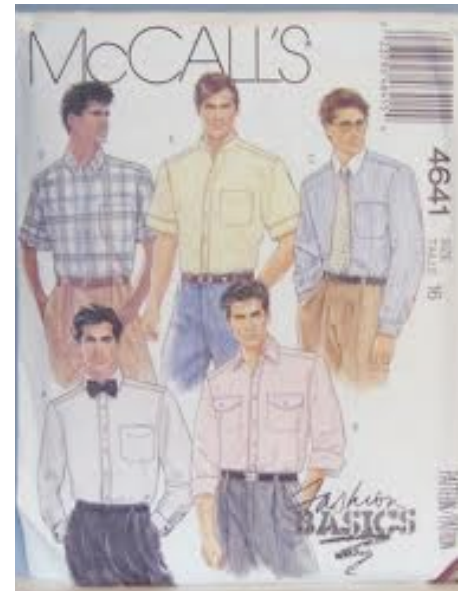
The front of the pattern envelope give the pattern number, figure types, size and price. It also shows a sketch and sometimes a photograph of the garment. These views give you an idea of the different fabrics, designs and details that you can use.

## The Back of the Patten Envelope:

On the back of the pattern envelope is a chart that states the amount of fabric you need to make the garments. Usually, the chart lists the fabric width so you can easily find the length you need. The most common width is 36 inches, 45 inches and 60

inches. If your fabric with is not on the list, use a conversion chart.

The back of then envelop also hold many other kinds of information. For example, if it requires lining or interfacing the amount is listed. Standard body measurements are also given. The notions are also listed on the back panel of the envelop. **Notions** are the items other than fabric that become a part of the garment. They include things like thread, fasteners and interfacing. They are under the heading **Notions** or **Supplies Needed**. It is important to read the back of the pattern envelope carefully so you purchase the correct supplies. Your project will



Pattern envelopes often show photos or sketches of different garments that can be made from the same pattern.

# The Information Found on the Back of the Pattern Envelope

The McCall Pattern Company, 11 Penn Plaza, New York 10001. Printed in U.S.A. Trademark Reg. U.S. Pat. Off. - Marca Registrada

**5303**

**MISSES; MEN'S OR TEEN BOYS' SWEATSHIRT, SHORT PANTS OR SHORTS AND HAT.** Loose-fitting sweatshirt has very dropped shoulders, yoke with zipper opening, front patch pocket, casing and drawstring at lower edge; hood is faced with contrast fabric; cargo shirt has forward shoulder seams, patch pocket and a shaped neckline, pullover pants in three lengths - 1/2, 3/4 and full length - with two rows of elastic at waist; hat is also included.

**BOUY MEASUREMENTS**

SIZES	Misses' or Men's/Teen Boys'				
	X-Small 32 1/2-37 1/2	Small 37 1/2-39	Medium 36-38	Large 40-42	X-Large 44-46
Sweatshirt	2 1/4	2 1/4	2 1/4	2 1/4	4
Short	2 1/4	2 1/4	2 1/4	2 1/4	2 1/4
Shorts	1 1/4	1 1/4	1 1/4	1 1/4	1 1/4
Hat	1 1/4	1 1/4	1 1/4	1 1/4	1 1/4

**FINISHED GARMENT MEASUREMENTS**  
Back length from natural neckline

Misess'	Teen Boys'	Men's
27	27 1/2	28
28	28 1/2	29

**SUGGESTED FABRICS:** All Garments - Cotton • Cotton Blends • Chambray • Checks • Ripstop Nylon • Supplex • Nylon Tricot • Satin • Medium Weight Buckram or Heavy Interfacing. NOTE: All Garments - Not Suitable For Diagonals.

**NOTIONS:** Thread; Sweatshirt - 3" Zipper, 3/8" Yoke, or 1/2" Wide Cording, 2 or 4 Drawstring Closures (cut) • 1/2" or 3/4" Wide Elastic; Short - 1/2" Buckram; Pants or Shorts (Longer/Shorter Length) - 2" Yoke of 1/2" Wide Elastic; Hat - 1/2" Yoke of 1/2" Wide Elastic.

**MISURES**

TAILLES	Jeune femme ou Homme/Jeune homme				
	Toute petite 70-80	Petite 83-87	Moyenne 90-97	Grande 102-107	Tresgrande 112-117
Sweatshirt	2.30	2.40	2.50	2.50	2.60
Short	2.00	2.20	2.30	2.50	2.60
Shorts	1.50	1.60	1.60	1.60	1.60
Hat	1.50	1.50	1.50	1.50	1.50

**TISSUS CONSEILLES:** Tous vêtements - Cotton • Cotonnade • Chambray • Checks • Ripstop Nylon • Supplex • Nylon Tricot. Casquette (entire de la visière) - Buckram de renfort moyen ou emboilage épais. R.S. Tous vêtements - Les diagonales ne conviennent pas.

**MERCIERIE:** Fil; Sweatshirt - 1 passeoire de 18cm, 2.30m de cordon de 6mm, 2 ou 4 boutons-arrêt de coudage (filés), 0.50m d'élastique de 3cm; Chemise - 6 boutons de 3cm; Pantalon ou short (version longue/shorter courte) - 2.50m d'élastique de 2cm; Casquette - 0.25m d'élastique de 1.5cm.

21 PATTERN PIECES

21 PIÉCES DE PATRON

1. Pattern number.
2. The garment description explains details. You may not be able to see all of these in the photograph or sketch.
3. Double-check the list of body measurements to be sure you buy the right size.
4. This tells you how much material to buy. Draw a line down from your pattern size. Draw a line across from the view you like and the width of your fabric. Where the lines cross is how much you need.
5. If linings or interfacings are needed, the yardage you need will be listed here.
6. Finished garment measurements are provided for you to check against your body measurements.
7. These fabrics have been selected by the designer as the best ones to use with this pattern. This section also warns you of any problems you may have with certain fabrics. Read it carefully before you select fabric. You may need extra fabric if you choose a large plaid or design that will have to be matched. The salesperson or your teacher can often help you make this decision.
8. These are "extras" that are needed to complete your garment. Buy them when you buy your fabric. You can easily match colors of thread, zippers, seam tape, and buttons then.
9. The back view shows you how the back will look.



## Cutting and Sewing Guide Sheet:

In your pattern envelope, you will find one or more printed sheets.

These cutting and sewing guide sheets give detailed instructions on how to make your garment.

Sketches are shown to help you understand procedures.

### What You Will Find On the Guide Sheets:

The first page gives you the cutting layouts, explanations of marking symbols, and a few general directions. Also, on the first page, you will find line drawings of all pattern pieces. Each piece has a letter or number on it. This makes it easier to identify the pieces you need for the view you are making.

The next section usually includes some general directions. A pattern markings section explains the symbols on pattern pieces such as cutting lines, grain lines, notches and dots. Another section shows how to lengthen or shorten pattern pieces for a proper fit. The directions may also give suggestions for preparing your fabric and

pattern, as well as any specific cutting notes. A fabric key generally explains the meaning of various shadings on the guide sheet. Using the fabric key, you will be able to see the different layers of fabric and the printed and reversed sides of pattern pieces in the cutting layouts.

Cutting layouts show how to correctly place the pattern pieces on your fabric. The guide sheet gives layouts for different views and sizes. It also shows layouts for various widths of fabrics and fabrics with nap. Find the layout for your garments and draw a circle around it. Often there are special notes in the cutting layout section to make cutting and marking easier. Be sure to read these carefully before you begin.

### Sewing Directions

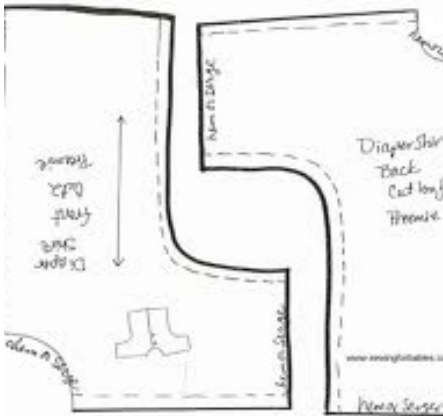
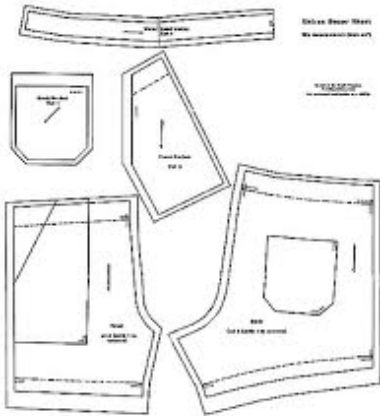
The sewing directions in the guide sheet takes you step by step through the process of making your garment. Complete each part before going on to the next step. It will make the construction of your garment easier if you read through all the steps before you begin sewing. You will have a better idea of what to do and how to do it.

# Pattern Pieces

Inside your pattern envelope you will also find the pattern pieces necessary for making your garment. Select

the pieces you need by referring to the guide sheet. Write your name on each piece you need and refold the

other pieces back up and place them back into the pattern envelope. This helps keep you organized.



Each pattern piece lists the pattern number, size, view number, name of the piece and identification letter. In addition, pattern pieces use many symbols. The bold line around each piece is the **cutting line**. Most patterns have several sizes printed on one pattern piece. If so, you will see several cutting lines representing each pattern size. Use the cutting line for your size. If you are not using a multi-sized pattern, just inside the cutting line may be a broken line that represents the **stitching line**. Multi-sized patterns do not show a stitching line.

A line with triangles on both ends indicates the **grain line**. This line helps you correctly locate the pattern on the fabric grain. Thin, solid lines indicate center fold lines, hemlines and placements for pockets or trims that on on the outside of the garment. **Adjustment lines** show where to shorten or lengthen the pattern piece.

**Notches** are the diamond-shaped symbols along the cutting line. They help you join pieces together at the right places. **Dots** are also aids for matching seams and other construction details.