

PCA-A42KA7 & PUZ-HA42NKA1
42,000 BTU/H CEILING-SUSPENDED INDOOR UNIT
42,000 BTU/H HYPER-HEATING UNIVERSAL OUTDOOR



Job Name:

System Reference:

Date:



Indoor Unit.....PCA-A42KA7

Outdoor Unit.....PUZ-HA42NKA1

INDOOR UNIT FEATURES

- Airflow settings for high and low ceiling applications
- Knock-out for outside-air intake
- Optional i-see Sensor™ for air distribution and energy saving
- Auto fan speed mode
- Filter status indicator
- Easy-to-clean, washable filter
- Suspends from ceiling for quick and easy installation
- Ideal for larger retail stores, classrooms, and restaurants
- Multiple control options available:
 - kumo cloud® smart device app for remote access
 - Third-party interface options
 - Wired or wireless controllers

OUTDOOR UNIT FEATURES

- Variable speed INVERTER-driven compressor
- Wide heating range: heating performance down to -13°F (average of 80% heating capacity)
- High speed heating at start up: Hyper-Heating INVERTER® reduces the time for heating at start up by about half compared to standard models
- Power receiver pre-charged with refrigerant volume for piping length up to 100 ft.
- High pressure/temperature protection
- Built-in base pan heater
- Flash injection circuit provides efficient high heating capacities at low ambient temperatures

SPECIFICATIONS: PCA-A42KA7 & PUZ-HA42NKA1

| | | | |
|---|---|--|---|
| Cooling at 95°F ¹ | Maximum Capacity | BTU/H | 42,000 |
| | Rated Capacity | BTU/H | 42,000 |
| | Minimum Capacity | BTU/H | 16,600 |
| | Maximum Power Input | W | 4,050 |
| | Rated Power Input | W | 4,050 |
| | Moisture Removal | Pints/h | 10.6 |
| | Sensible Heat Factor | | 0.72 |
| Heating at 47°F ² | Maximum Capacity | BTU/H | 54,000 |
| | Rated Capacity | BTU/H | 48,000 |
| | Minimum Capacity | BTU/H | 24,000 |
| | Maximum Power Input | W | 5,690 |
| | Rated Power Input | W | 4,760 |
| | Power Factor | % | 97.0/97.0 |
| Heating at 17°F ³ | Maximum Capacity | BTU/H | 48,000 |
| | Rated Capacity | BTU/H | 38,500 |
| | Maximum Power Input | W | 7,305 |
| | Rated Power Input | W | 5,935 |
| Heating at 5°F ⁴ | Maximum Capacity | BTU/H | 48,000 |
| Maximum Power Input | W | 7,945 | |
| Heating at -13°F ⁷ | Maximum Capacity | BTU/H | 38,400 |
| Efficiency | SEER | | 15.5 |
| | EER ¹ | | 10.3 |
| | HSPF [IV] | | 10.0 |
| | COP at 47°F ² | | 2.95 |
| | COP at 17°F at Maximum Capacity ³ | | 1.9 |
| | COP at 5°F at Maximum Capacity ⁴ | | 1.75 |
| | COP at -13°F at Maximum Capacity ⁷ | | 1.3 |
| ENERGY STAR [®] Certified | | No | |
| Electrical | Voltage, Phase, Frequency | | 208/230, 1, 60 |
| | Guaranteed Voltage Range | V AC | 198,187 - 253 |
| | Voltage: Indoor - Outdoor, S1-S2 | V AC | 208/230 |
| | Voltage: Indoor - Outdoor, S2-S3 | V DC | 24 |
| | Short-circuit Current Rating [SCCR] | kA | 5 |
| | Recommended Fuse/Breaker Size (Outdoor) | A | 40 |
| | Recommended Wire Size [Indoor - Outdoor] | AWG | 14 |
| Power Supply | | Indoor unit is powered by the outdoor unit | |
| Indoor Unit | MCA | A | 2.0 |
| | Fan Motor Full Load Amperage | A | 0.97 |
| | Fan Motor Output | W | 160 |
| | Fan Motor Type | | DC Motor |
| | Airflow Rate at Cooling, Dry | CFM | 810-885-955-1025 |
| | Airflow Rate at Cooling, Wet | CFM | 740-810-885-955 |
| | Airflow Rate at Heating, Dry | CFM | 810-885-955-1025 |
| | Sound Pressure Level [Cooling] | dB[A] | 39-41-43-45 |
| | Sound Pressure Level [Heating] | dB[A] | 39-41-43-45 |
| | Drain Pipe Size | In. [mm] | 1-1/32 [26] |
| | Coating on Heat Exchanger | | — |
| | External Finish Color | | White Munsell 6.4Y 8.9/0.4 |
| | Unit Dimensions | W x D x H: In. [mm] | 63 x 26-3/4 x 9-1/16 [1600 x 680 x 230] |
| | Package Dimensions | W x D x H: In. [mm] | 65-3/4 x 29-15/16 x 13-3/4 [1670 x 760 x 350] |
| Unit Weight | Lbs. [kg] | 86 [39] | |
| Package Weight | Lbs. [kg] | 102 [46] | |
| Indoor Unit Operating Temperature Range | Cooling Intake Air Temp [Maximum / Minimum]* | °F | 90 DB, 72 WB / 68 DB, 61 WB |
| | Heating Intake Air Temp [Maximum / Minimum] | °F | 77 DB / 59 DB |

NOTES:

AHRI Rated Conditions (Rated data is determined at a fixed compressor speed)

| | | |
|--|----|------------------------------|
| ¹ Cooling (Indoor // Outdoor) | °F | 80 DB, 67 WB // 95 DB, 75 WB |
| ² Heating at 47°F (Indoor // Outdoor) | °F | 70 DB, 60 WB // 47 DB, 43 WB |
| ³ Heating at 17°F (Indoor // Outdoor) | °F | 70 DB, 60 WB // 17 DB, 15 WB |

Conditions

| | | |
|---|----|--------------------------------|
| ⁴ Heating at 5°F (Indoor // Outdoor) | °F | 70 DB, 60 WB // 5 DB, 4 WB |
| ⁵ Heating at -4°F (Indoor // Outdoor) | °F | 70 DB, 60 WB // -4 DB, -5 WB |
| ⁶ Heating at -5°F (Indoor // Outdoor) | °F | 70 DB, 60 WB // -5 DB, -6 WB |
| ⁷ Heating at -13°F (Indoor // Outdoor) | °F | 70 DB, 60 WB // -13 DB, -14 WB |

*Outdoor Unit Operating Temperature Range (Cooling Air Temp (Maximum / Minimum)):

- Applications should be restricted to comfort cooling only; equipment cooling applications are not recommended for low ambient temperature conditions.

**Outdoor Unit Operating Temperature Range (Cooling Thermal Lock-out / Re-start Temperatures; Heating Thermal Lock-out / Re-start Temperatures):

- System cuts out in heating mode to avoid thermistor error and automatically restarts at these temperatures.

SPECIFICATIONS: PCA-A42KA7 & PUZ-HA42NKA1

| | | | |
|--|--|---------------------------------------|--|
| Outdoor Unit | MCA | A | 36.0 |
| | MOCP | A | 44 |
| | Fan Motor Output | W | 74 |
| | Airflow Rate | CFM | 3319/3319 |
| | Refrigerant Control | | LEV |
| | Defrost Method | | Reverse Cycle |
| | Sound Pressure Level, Cooling ¹ | dB(A) | 49 |
| | Sound Pressure Level, Heating ² | dB(A) | 51 |
| | Compressor Type | | Scroll |
| | Compressor Model | | ANB42FJTMT |
| | Compressor Rated Load Amps | A | 19.0 |
| | Compressor Locked Rotor Amps | A | 28.0 |
| | Compressor Oil Type // Charge | oz. | FVC68D // 1.7,57 |
| | External Finish Color | | Ivory Munsell 3Y 7.8/1.1 |
| | Base Pan Heater | | Built-in |
| | Unit Dimensions | W x D x H: In. [mm] | 41-5/16 x 14-3/16 x 52-11/16 [1050 x 360 x 1338] |
| | Package Dimensions | W x D x H: In. [mm] | 43 x 18 x 57 [1110 x 480 x 1440] |
| | Unit Weight | Lbs. [kg] | 283 [128] |
| | Package Weight | Lbs. [kg] | 307 [139] |
| | Outdoor Unit Operating Temperature Range | Cooling Air Temp [Maximum / Minimum]* | °F |
| Heating Air Temp [Maximum / Minimum] | | °F | 75 DB, 65 WB / -13 DB, -14 WB |
| Heating Thermal Lock-out / Re-start Temperatures** | | °F | -22 / -13 |
| Refrigerant | Type | | R410A |
| | Charge | Lbs, oz | 13, 4.0 |
| | Chargeless Piping Length | Ft. [m] | 0.0 [30.0] |
| | Additional Refrigerant Charge Per Additional Piping Length | oz./Ft. [g/m] | 0.6 [56] |
| Piping | Gas Pipe Size O.D. [Flared] | In.[mm] | 5/8 [15.88] |
| | Liquid Pipe Size O.D. [Flared] | In.[mm] | 3/8 [9.52] |
| | Maximum Piping Length | Ft. [m] | 245 [75] |
| | Maximum Height Difference | Ft. [m] | 100 [30] |
| | Maximum Number of Bends | | 15 |

NOTES:

AHRI Rated Conditions

(Rated data is determined at a fixed compressor speed)

¹Cooling (Indoor // Outdoor) °F 80 DB, 67 WB // 95 DB, 75 WB

²Heating at 47°F (Indoor // Outdoor) °F 70 DB, 60 WB // 47 DB, 43 WB

³Heating at 17°F (Indoor // Outdoor) °F 70 DB, 60 WB // 17 DB, 15 WB

Conditions

⁴Heating at 5°F (Indoor // Outdoor) °F 70 DB, 60 WB // 5 DB, 4 WB

⁵Heating at -4°F (Indoor // Outdoor) °F 70 DB, 60 WB // -4 DB, -5 WB

⁶Heating at -5°F (Indoor // Outdoor) °F 70 DB, 60 WB // -5 DB, -6 WB

⁷Heating at -13°F (Indoor // Outdoor) °F 70 DB, 60 WB // -13 DB, -14 WB

*Outdoor Unit Operating Temperature Range (Cooling Air Temp (Maximum / Minimum)):

- Applications should be restricted to comfort cooling only; equipment cooling applications are not recommended for low ambient temperature conditions.

**Outdoor Unit Operating Temperature Range (Cooling Thermal Lock-out / Re-start Temperatures; Heating Thermal Lock-out / Re-start Temperatures):

- System cuts out in heating mode to avoid thermistor error and automatically restarts at these temperatures.

INDOOR UNIT ACCESSORIES: PCA-A42KA7

| | | |
|----------------------------|---|--------------------|
| Control Interface | BACnet® and Modbus Interface | PAC-UKPRC001-CN-1 |
| | CN24 Relay Kit | CN24RELAY-KIT-CM3 |
| | IT Extender | PAC-WHS01IE-E |
| | kumo station® for kumo cloud® | PAC-WHS01HC-E |
| | Lockdown bracket for remote controller | RCMKP1CB |
| | Remote Operation Adapter† | PAC-SF40RM-E |
| | Thermostat Interface | PAC-US444CN-1 |
| | USNAP Adapter | PAC-WHS01UP-E |
| Remote Sensor | Wireless Interface for kumo cloud® | PAC-USWHS002-WF-2 |
| | Flush Mount Temperature Sensor | PAC-USSEEN001-FM-1 |
| | Remote Temperature Sensor | PAC-SE41TS-E |
| Wired Remote Controller | Wireless temperature and humidity sensor for kumo cloud® | PAC-USWHS003-TH-1 |
| | Deluxe Wired MA Remote Controller† | PAR-40MAAU |
| | Simple MA Remote Controller† | PAC-YT53CRAU-J |
| Wireless Remote Controller | Touch MA Controller† | PAR-CT01MAU-SB |
| | kumo touch™ RedLINK™ Wireless Controller | MHK2 |
| | Wireless MA Receiver | PAR-FA32MA-W |
| | Wireless MA Remote Controller | PAR-FL32MA-E |
| | Wireless Receiver Kit | PAR-SL93B-E |
| Condensate | Wireless Receiver Kit with i-See sensor™ | PAR-SA92MW-E |
| | Blue Diamond (Advanced) Mini Condensate Pump w/ Reservoir & Sensor (208/230V) [recommended] | X87-721 |
| | Blue Diamond (MegaBlue Advanced) Condensate Pump w/ Reservoir & Sensor | X87-835 |
| Disconnect Switch | Blue Diamond Sensor Extension Cable — 15 Ft. | C13-103 |
| | (30A/600V/UL) [fits 2" X 4" utility box] - Black | TAZ-MS303 |
| Drain Pump | (30A/600V/UL) [fits 2" X 4" utility box] - White | TAZ-MS303W |
| | Drain Pump Kit | PAC-SH84DM-E |
| Filter | 65% Medium Efficiency Filter (MERV 8) | PAC-SH90KF-E |
| i-see Sensor® Panel | i-see Sensor® | PAC-SH91MK-E |
| Lineset | 10' x 3/8" x 10' x 5/8" Lineset (Twin-Tube Insulation) | MPLS385812T-10 |
| | 100' x 3/8" x 100' x 5/8" Lineset (Twin-Tube Insulation) | MPLS385812T-100 |
| | 15' x 3/8" x 15' x 5/8" Lineset (Twin-Tube Insulation) | MPLS385812T-15 |
| | 30' x 3/8" x 30' x 5/8" Lineset (Twin-Tube Insulation) | MPLS385812T-30 |
| | 50' x 3/8" x 50' x 5/8" Lineset (Twin-Tube Insulation) | MPLS385812T-50 |
| | 65' x 3/8" x 65' x 5/8" Lineset (Twin-Tube Insulation) | MPLS385812T-65 |

NOTES:

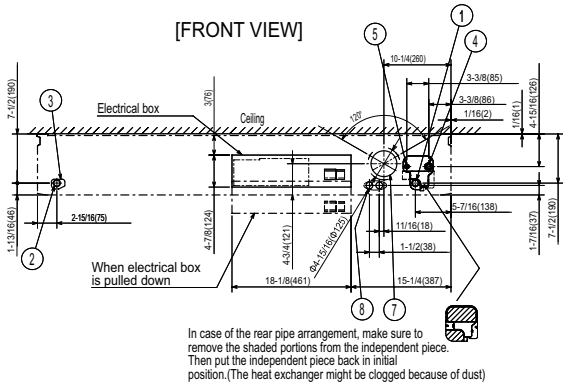
†PAC-SF40RM-E (Unable to use with wireless remote controller)

OUTDOOR UNIT ACCESSORIES: PUZ-HA42NKA1

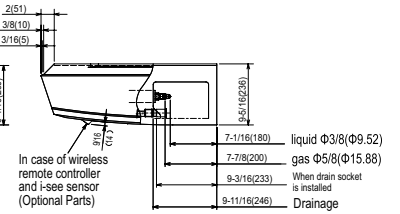
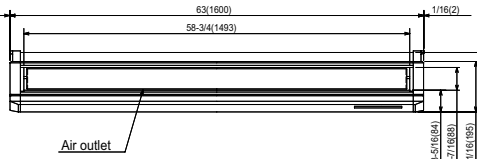
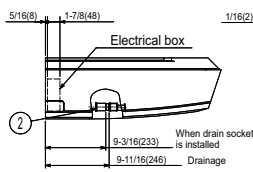
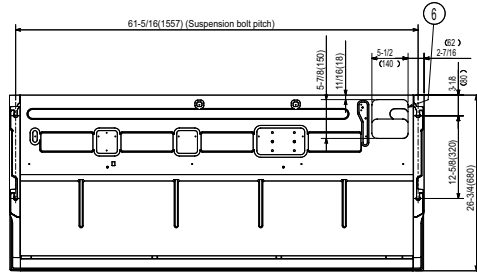
| | | |
|-------------------------|--|--|
| Air Outlet Guide | Air Outlet Guide (1 Piece) | PAC-SH96SG-E (two pieces are required) |
| Centralized Drain Pan | Central Drain Pan | PAC-SH97DP-E |
| Control/Service Tool | Control/Service Tool | PAC-SK52ST |
| Drain Socket | Drain Socket | PAC-SG61DS-E |
| Hail Guards | Hail Guard | HG-A2 |
| M-NET Converter | M-NET Converter | PAC-SJ85MA-E |
| | M-NET Converter | PAC-SJ95MA-E |
| Mounting Pad | Condensing Unit Mounting Pad: 24" x 42" x 3" | ULTRILITE2 |
| Optional Defrost Heater | Optional Defrost Heater | PAC-SJ20BH-E |
| Stand | 18" Dual Fan Stand | QSMS1802M |
| | 24" Dual Fan Stand | QSMS2402M |
| | Condenser Wall Bracket | QSWB2000M-1 |
| | Condenser Wall Bracket -Stainless Steel Finish | QSWBSS |
| | Outdoor Unit Stand — 12" High | QSMS1202M |
| Wind Baffle | Front Wind Baffle | WB-PA3 (two pieces are required) |

INDOOR UNIT DIMENSIONS: PCA-A42KA7

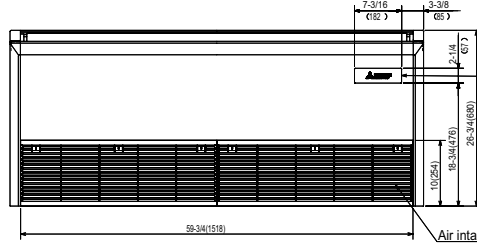
Unit: in (mm)



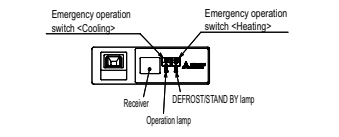
NOTES.
 1. Use M10 or W3/8 screw for anchor bolt.
 2. Please be sure when installing the drain pump (option parts), refrigerant pipe will be only upward.



- ① Drainage pipe connection(1(26mm)I.D.)
- ② Drainage pipe connection(for the left arrangement)
- ③ Knockout hole for left drain-piping arrangement
- ④ Refrigerant-pipe connection (gas pipe side/flared connection)
- ⑤ Refrigerant-pipe connection (liquid pipe side/flared connection)
- ⑥ Knockout hole for upper drain pipe arrangement
- ⑦ Knockout hole for fresh air intake Φ 3-15/16(Φ 100)
- ⑧ Knockout hole for wiring arrangement Φ 7/8(Φ 22) Accessory..Drain socket (1(26mm)I.D.)

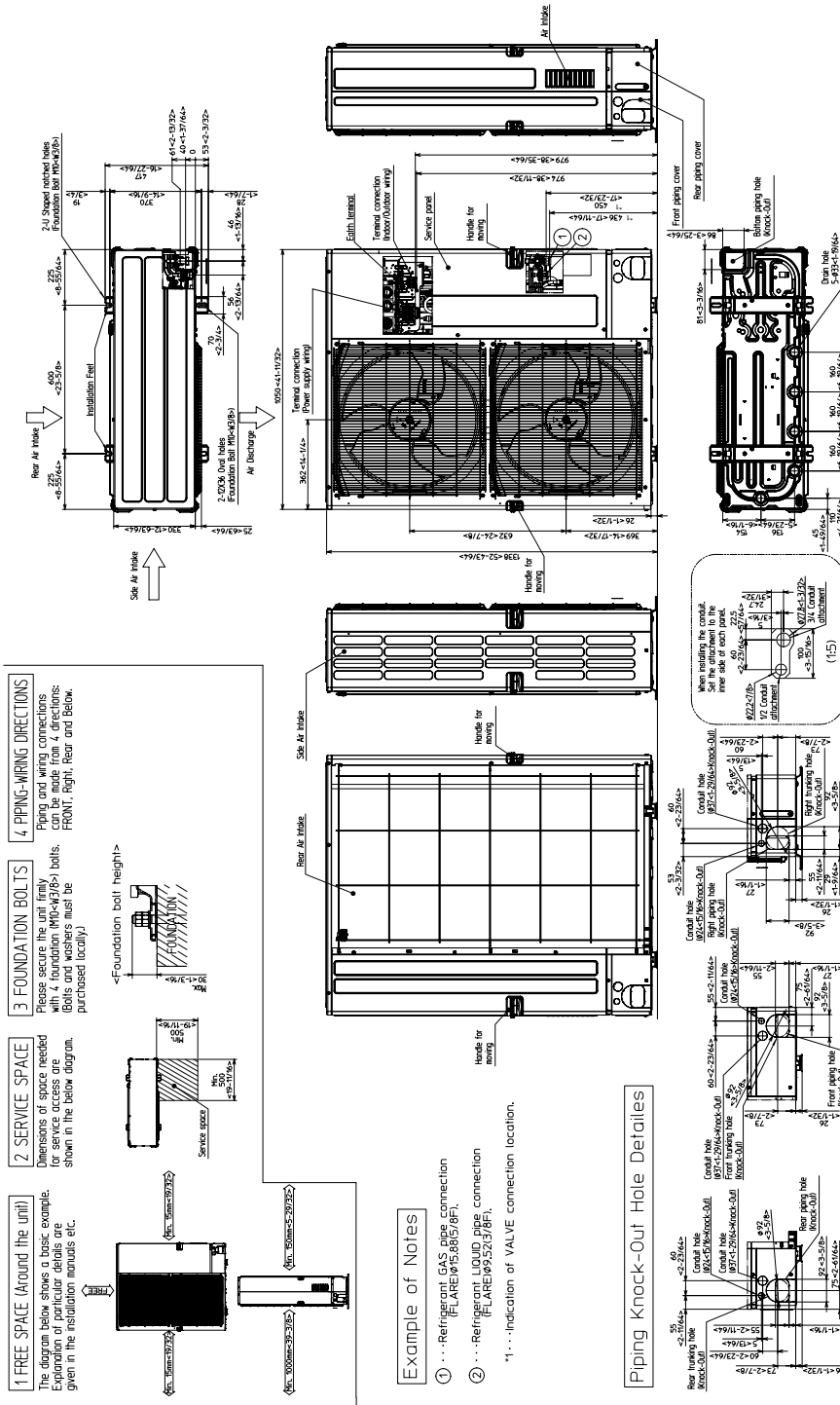


In case of wireless remote controller and i-see sensor(Optional Parts)



OUTDOOR UNIT DIMENSIONS: PUZ-HA42NKA1

Unit: mm<in>



1340 Satellite Boulevard Suwanee, GA 30024
Toll Free: 800-433-4822 www.mehvac.com

