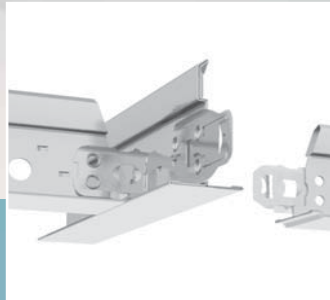




CEILING | SYSTEMS

Between us, ideas become reality™



PeakForm
SUSPENSION SYSTEMS



The PeakForm Range: WHERE **INNOVATION** MEETS PERFORMANCE

PeakForm is a comprehensive range of suspended ceiling grid solutions designed to meet most commercial design requirements:

- General Application: Including PRELUDE XL 24mm and SUPRAFINE XL 15mm systems.
- Designer Applications: Including the minimalist SILHOUETTE system.
- Perimeter Trims and Accessories.

PeakForm suspension systems meet the requirements of Australian Standard 2785-2000 "Suspended Ceilings Design and Installation" and are designed for use with a wide variety of Armstrong ceiling products including: mineral and soft fibre, metal, wood and special solutions.

PeakForm Grid Profiles

PeakForm is an innovative design for Main Bars and Cross Runner. The taller **PeakForm** profiles are engineered to create a stronger, more stable suspension system making installation both faster and easier. **PeakForm** Main Bars feature a firm, quick and easy assembled Main Bar to Main Bar / bulb to-bulb connection.

The staked-on Superlock joiner clip allows for Main Bars to be disconnected and reconnected laterally in low clearance areas or in the middle of a room. Superlock is an industry first staked-on clip for Main Bars which provide tighter, secure bulb-to-bulb connections; connections are confirmed by an audible click.

Hot Dipped Galvanized Steel:

Inhibits red rusting better and longer than electro galvanised or painted systems

- Installation of grid can start before the building is enclosed.
- Long term system performance because entire system is hot dipped galvanised steel.

Thin gauge technology:

A lighter carton weight enables easier handling on site, plus the added benefit of the **PeakForm** bulb allows easy cutting of the grid.

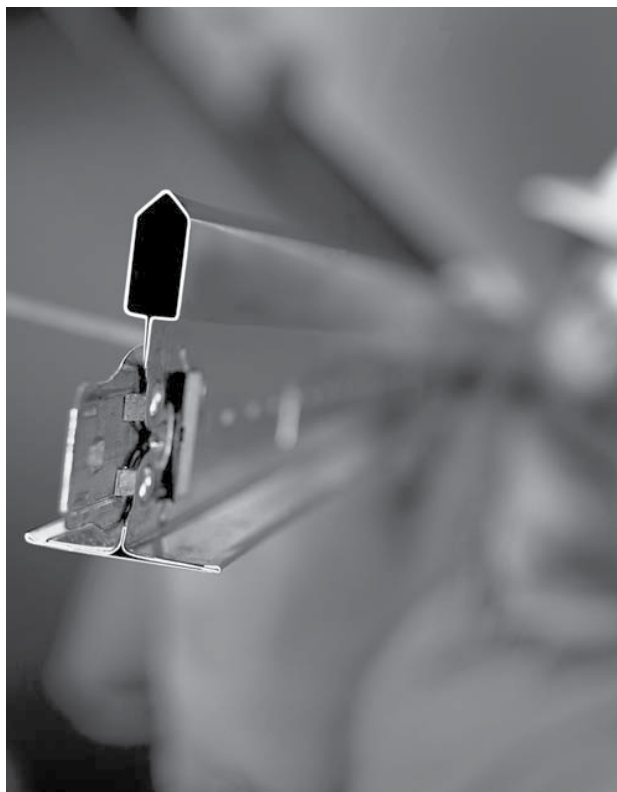


Physical detail

All grid sections are made from double-web galvanised steel with a surface finish of baked polyester paint.

Rotary Stitched for strength

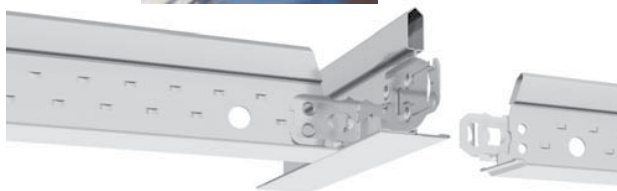
All **PeakForm** components feature a unique "rotary stitched" construction. The two metal layers of the vertical web are mechanically locked together in a sophisticated in-line process. Stitching enhances the torsional resistance and general "feel" of the **PeakForm** components.



PeakForm "click" installation

PeakForm Cross Runner in both 24mm and 15mm widths feature an advanced stab system that locates with an audible "click", ensuring a solid installation at all times. The stab end is precision stamped from a separate piece of high grade steel permitting an increased accuracy and economy of production over the more conventional integral forming of the Cross Runner ends. All 1200 long Cross Runner feature the **PeakForm** design.

The Cross Runner are inserted to the right of each other through the Main Bar slots and easily pushed home.



Sustainability

Armstrong **PeakForm** suspension systems contain 25% recycled content and can be fully recycled at the end of life.

PeakForm grid systems are modular and can be disassembled and reused.

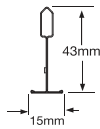
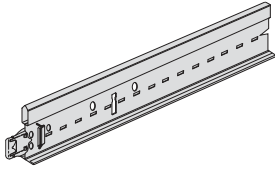


PeakForm SUPRAFINE 15 XL²

PeakForm SUPRAFINE XL² suspension system is a refined narrow profile, exposed 15mm "tee" grid, suitable for tegular edge ceiling panels.

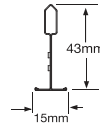
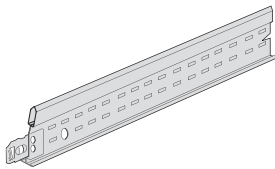


Main Bar: SUPRAFINE 15 with Superlock Clip (bulb-to-bulb connection)



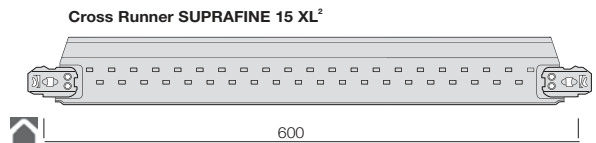
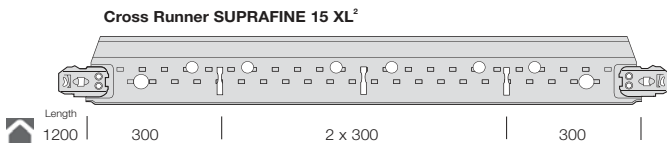
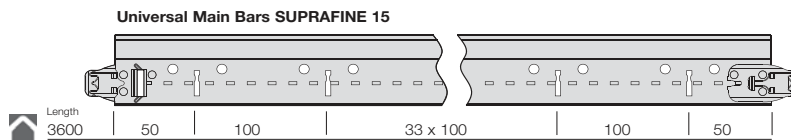
Item Number	Dimensions			Rout Centres mm	Content / Carton pcs	Weight / Carton kg
	length (mm)	height (mm)	width (mm)			
HBP 75 40 42	3600	43	15	100	20	22,50

Cross Runner: SUPRAFINE 15 XL² (stab system, override)



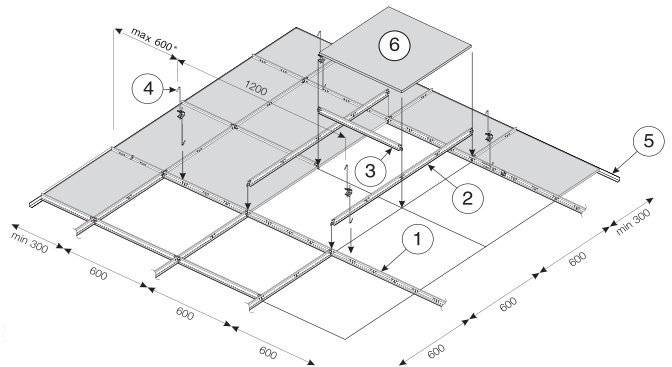
HBP 75 30 42	1200	43	15	300	60	20,70
HBP 75 20 42	600	43	15	-	60	10,30

Section Drawings



System Drawing and Installation (Typical modules are 1200 x 600mm and 600 x 600mm. Special sizes available upon request.)

Standard lay-in installation of 15mm exposed suspension system for Tegular Edge Panels.



Module	Installation		Quantities required per 100m ² (no waste included)			
	Main Bar centres	Hangers centres	1 Main Bar	2 Cross Runner 1200mm	3 Cross Runner 600mm	4 Hanger
6 Ceiling Panels 1200 x 600mm 139 pcs	1200mm	1200mm	23 pcs	139 pcs	-	70 pcs
	600mm	1200mm	48 pcs	-	139 pcs	140 pcs
600 x 600mm 278 pcs	1200mm	1200mm	23 pcs	139 pcs	139 pcs	70 pcs
	600mm	1200mm	48 pcs	-	278 pcs	140 pcs

5 Perimeter trim quantity depends upon room geometry

The chart is for general guidance only.

Cross Runner alignment is achieved by locating the tees to the right-hand side of the adjoining section.
All measurements in millimetres. All sizes are nominal.
For perimeter details, hangers and accessories, please refer to pages 6 - 7.

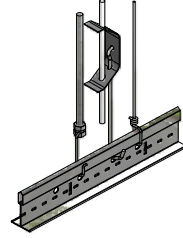
For additional information and drawings, please refer to www.armstrongceilings.com.au



ALUFORM
INTERIOR SUPPLIES

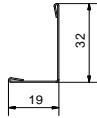
19 CARRINGTON STREET (CNR HINCKSMAN ST)
PO BOX 6008 | QUEANBEYAN NSW 2620
PH: (02) 6299 5817 FAX: (02) 6299 5863
EMAIL: sales@aluforminteriors.com.au
www.aluforminteriors.com.au

PERIMETER TRIMS AND ACCESSORIES

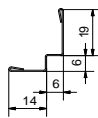
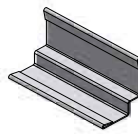


Perimeter Trims

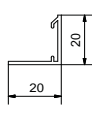
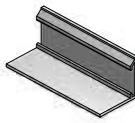
Item Number	Description	Length (mm)	Content / Carton pcs / 1m	Weight / Carton kg
HBPT1932H HBP 784003	Steel Perimeter Trims: Roll Formed and Prepainted			
	Long Leg Wall Angle	3600	30 / 108	21
	Shadow Line Wall Angle	3600	30 / 108	20
AL008RCPGW AL009RCPGW ALBULK3600GW AL*CURVE	Aluminium Perimeter Trims: Extruded and Powdercoated			
	Wall Angle for Roll In Clip Attachment	3600	20 / 72	14
	Shadow Line Wall Angle for Roll In Clip Attachment	3600	20 / 72	14
	Bulkhead Trim (suits both 10 and 13mm Pb)	3600	10 / 40	10
AL*CURVE	Curved Wall Angle (* any of above Wall Angles)	3600	- / -	-
COLRING*	Column Ring (* any of above Wall Angles)	Defined by column radius		



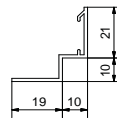
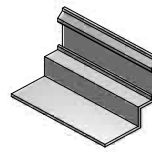
HBPT1932H



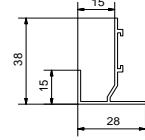
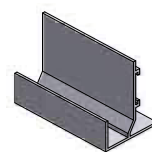
HBP 784003



AL008RCPGW



AL009RCPGW

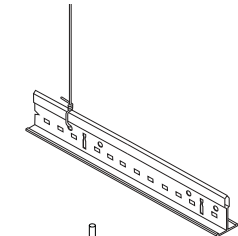


ALBULK3600GW

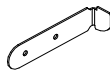
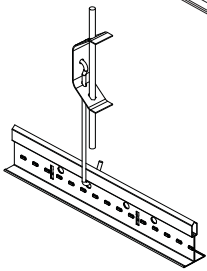
Suspension & Accessories

Grid Accessories

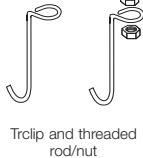
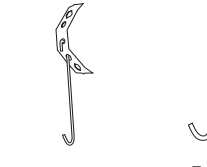
Item Number	Description	Dimensions length (mm)	Content / Carton pcs	Weight / Carton kg
2424	Hook Suspension Clip for 5mm Rod	165	100	2.2
ARM-051	Direct Fix Clip	175	100	2.6
Tclip	Suspension Clip for 6mm Threaded Rod	80	100	2.0
M6 Rod	6mm Threaded Rod	1200	50	11.0
M6 Nuts	6mm nuts for Threaded Rod	-	200	0.4
DLCC	Direct Load Ceiling Clip	80	250	5.5
UHDC	Universal Hold Down Clip	-	1000	4.065
ALRICS	Roll In Clip	65	100	5
5mm	5mm Suspension Rod	4000	40	24.2
2.5mm	2.5mm Suspension Wire	4000	160	25.0
188	Angle Bracket	47 x 47	100	1.2
247	Suspension Rod Angle Bracket	55	100	2.1
274	Suspension Rod Bracket	80	100	2.1
254	Suspension Rod Joiner	-	100	0.9
ES4	4" Expansion Sleeve	100	100	5.0
DW50	Drywall Transition Clip	-	200	11.0
MBAC	Main Beam Adapter Clip	-	100	7.1
7895	Grid Touch Up Paint (128g net)	-	6	1.3
UPC	UPC - Partition Clip	-	200	10



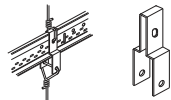
ARM-051



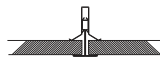
ALRICS



Tclip and threaded rod/nut



DLCC



UHDC



188



247



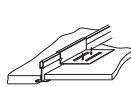
UPC Partition Clip



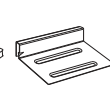
2424



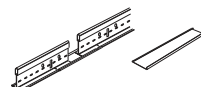
254



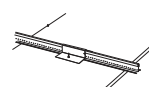
DW50



ES4



MBAC



TOUCH UP PAINT

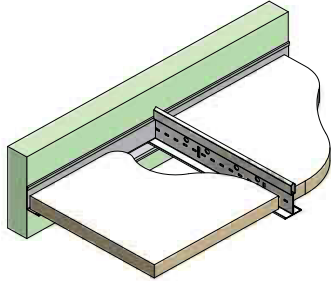
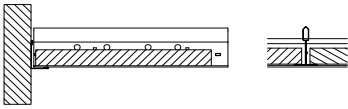


PERIMETER SOLUTIONS

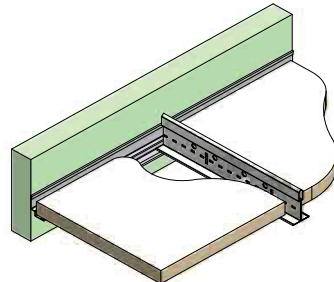
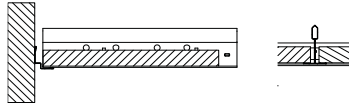
Mineral suspension system.

Perimeter Detailing Recommendations

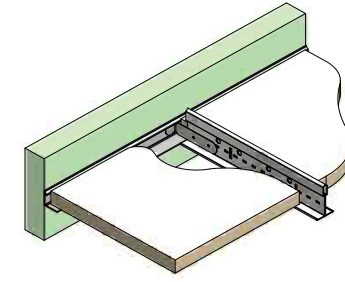
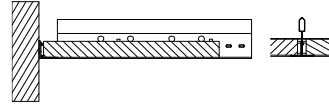
Square Edge Panels



Grid, Wall Angle and "Square Edge Panel" at same level



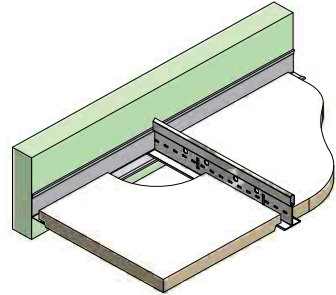
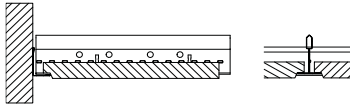
Grid, Wall Angle and "Square Edge Panel" at same level



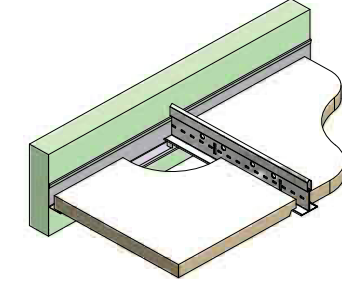
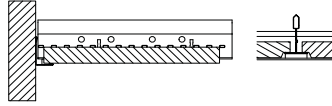
Tee Bar is secured to Wall Angle via Roll In Clip

Note: Wall Angles should be fixed to wall at 450mm centres

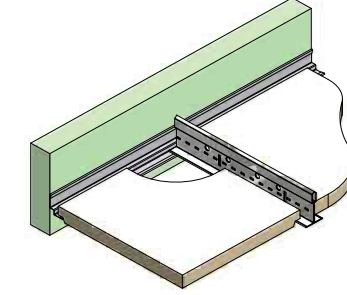
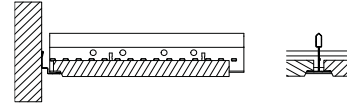
Tegular Edge Panels



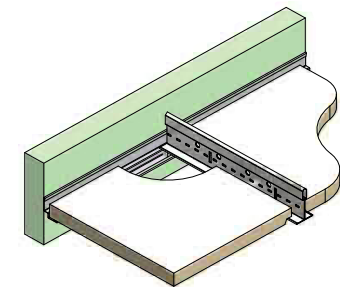
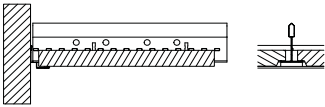
Panel edge is field "tegrulated" at Wall Angle



Wall Angle position is dropped to level of face of Panel; Tee Grid is packed at Wall Angle and Panel is square cut at wall angle

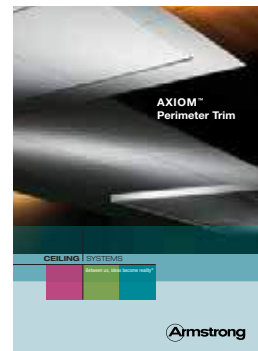


Panel edge is field "tegrulated" at Wall Angle



Wall Angle position is dropped to level of face of Panel; Tee Grid is packed at Wall Angle and Panel is square cut at wall angle

For information on Armstrong Aluminium Grid and Axiom Perimeter / Pelmet systems, refer to the following brochures.



For additional information and drawings, please refer to www.armstrongceilings.com.au

Armstrong

7



ALUFORM
INTERIOR SUPPLIES

19 CARRINGTON STREET (CNR HINCKSMAN ST)
PO BOX 6008 | QUEANBEYAN NSW 2620
PH: (02) 6299 5817 FAX: (02) 6299 5863
EMAIL: sales@aluforminteriors.com.au
www.aluforminteriors.com.au

Specifications

Scope

The contractor to furnish all materials, labour and equipment for the erection of the exposed ceiling system where so indicated on the architectural drawings.

Material

Ceiling suspension shall be Armstrong PeakForm two way exposed, hot dipped galvanised steel system; (either): Prelude XL² 24mm Tee, SupraFine XL² 15mm Tee, or Silhouette XL² 15mm "shadowline hat" profiles. All materials supplied by Armstrong meet the requirements of Australian Standard 2785-2000 "Suspended Ceilings Design and Installation".

Perimeter Detail

Wall Angles should be fixed to wall at 450mm centres. Exposed ceiling grid members intersecting with the Wall Angle or Shadowline Wall Angle, may either be unfixed, or fastened with a Roll In Clip.

Installation

The Main Bar shall be hung with a 5mm galvanised rod and clip system or 2.5mm wire, accurately levelled. Suspension points shall be spaced at 1200mm* centres along the Main Bar. Cross Runner shall intersect and be positively locked to Main Bars. Panel Hold Down Clips to be used as required. Hangers, Main Bars and Cross Runner shall be spaced so as

not to exceed the design ceiling load or as may otherwise be required to prevent deflection in excess of 1/360 of the span of the spacers or Main Bars. Where light fittings, air conditioning fixtures etc are to be supported by the grid system, extra hangers may be required. Down bracing to be incorporated in ceiling systems when used externally or adjacent to opening prone to sudden uplift caused by external wind forces.

* For suspension points greater than 1200mm centres along the Main Bar, contact your local Armstrong representative for load ratings.

Maximum Fixture Weight

Main Bar to Main Bar (Fixture / Panel Orientation)

	1200 CT	600 CT	1200 CT	600 CT
Main Bar	1200	1200	1200	1200
Cross Runner x 600	1200	1200	1200	1200
Cross Runner x 1200	1200	1200	1200	1200
1. FIXTURE* (mm)	1200 x 600	600 x 600	1200 x 300	600 x 600
2. PLANNING MODULE (mm)	1200 x 1200	1200 x 1200	1200 x 600	1200 x 600
3. HANGER SPACING (mm)	1200	1200	1200	1200
4. PRELUDE 24	21.2 kg	14.0 kg	17.4 kg	14.0 kg
5. SUPRAFINE 15	27.9 kg	13.9 kg	24.9 kg	13.9 kg
6. SILHOUETTE 15	-	-	-	14.2 kg

Cross Runner to Cross Runner (Fixture / Panel Orientation)

	1200 CT	600 CT	600 CT	1200 CT
Main Bar	1200	1200	600	1200
Cross Runner x 600	1200	1200	600	1200
Cross Runner x 1200	1200	1200	600	1200
1. FIXTURE* (mm)	1200 x 600	600 x 600	600 x 600	1200 x 300
2. PLANNING MODULE (mm)	1200 x 1200	1200 x 1200	600 x 600	1200 x 1200
3. HANGER SPACING (mm)	1200	1200	1200	1200
4. PRELUDE 24	10.6 kg	10.6 kg	37.5 kg	17.4 kg
5. SUPRAFINE 15	-	-	37.3 kg	-
6. SILHOUETTE 15	-	-	37.9 kg	-

Connection Strength (SEISMIC)

Main Bar
HBP734042

Minimum KGS to Pull Out
Compression / Tension
174 kg / 133 kg

Cross Runner
All Cross Runner exceed 136 kg in both compression / tension.

Loading Parameters

- Main Bars at 1200mm centres
- Cross Runner 1200mm at 600mm spacing
- Suspension points spaced at 1200mm on Main Bar

*Note: Additional independent support of heavy fixtures should be considered for safety purposes.

The above data is based on 1200mm hanger spacing, board weight of 4.8kg/m², maximum deflection of tees not to exceed 1/360 of the span and suspension system installed in accordance with AS2785-2000.

Armstrong, the Global Leader in Acoustic Ceiling Systems

NSW

Armstrong World Industries Pty. Ltd.
99 Derby Street,
Silverwater NSW 2128

Telephone (02) 9748 1588
Facsimile (02) 9748 8449

VIC/TAS

Armstrong World Industries Pty. Ltd.
29-39 Mills Road,
Braeside VIC 3195

Telephone (03) 9580 9633
Facsimile (03) 9587 5139

QLD/NT

Armstrong World Industries Pty. Ltd.
6 Barrinia Street,
Slacks Creek QLD 4127

Telephone (07) 3809 5565
Facsimile (07) 3809 5507



SCAN* THIS CODE to learn more about our PeakForm Suspension Systems

*Download a Free QR code reader app available from Apple store

www.armstrongceilings.com.au



ALUFORM
INTERIOR SUPPLIES

19 CARRINGTON STREET (CNR HINCKSMAN ST)
PO BOX 6008 | QUEANBEYAN NSW 2620
PH: (02) 6299 5817 FAX: (02) 6299 5863
EMAIL: sales@aluforminteriors.com.au
www.aluforminteriors.com.au