

# Pearson Global Scale of English

Yukio Tono (TUFS)

# What is the Global Scale of English (GSE)?

- The Global Scale of English (GSE) is a standardised, granular English proficiency scale from 10–90, and is psychometrically aligned to the Common European Framework of Reference for Languages (CEFR, Council of Europe, 2001).
- Unlike the CEFR which describes proficiency in six wide levels (A1, A2, B1, B2, C1, C2), the GSE identifies what a learner can do at each point on the scale across speaking, listening, reading and writing skills, to provide a more granular description of language proficiency.

# CEFR: 6 Common Reference Levels

| CEFR | CEFR LABEL             | CEFR             |
|------|------------------------|------------------|
| C2   | Mastery                | Proficient User  |
| C1   | Operational efficiency |                  |
| B2   | Vantage                | Independent User |
| B1   | Threshold              |                  |
| A2   | Waystage               | Basic User       |
| A1   | Breakthrough           |                  |

## GSE 開発経緯（1990年台の Swiss project）

- When the CEFR was being developed in the mid-nineties, around 2,000 teachers were involved in selecting, sorting and rating speaking-related can-do statements using sources from around the world.
- Each one of these original can-do statements was given a numeric difficulty value and ranked accordingly. After examining the list, researchers led by Brian North noticed that the statements fell into clusters of approximately nine groups. Cut-off points were added and nine levels were created.

# The original scales


- While there were originally nine CEFR levels (ten if you include 'Tourist' level), if you compare the tables you will see that A2+, B1+ and B2+ are not included in the more familiar table in the *CEFR*. This is because various stakeholders, including exam bodies and publishers, thought that a six-level model would better reflect their course book catalogs at the time.

| DIFFICULTY |       | ALTE LABEL             | CEFR |
|------------|-------|------------------------|------|
| 3.90       | -     | Mastery                | C2   |
| 2.80       | 3.90  | Operational efficiency | C1   |
| 1.74       | 2.80  | Vantage Plus           | B2+  |
| 0.72       | 1.74  | Vantage                | B2   |
| -0.26      | 0.72  | Threshold Plus         | B1+  |
| -1.23      | -0.26 | Threshold              | B1   |
| -2.21      | -1.23 | Waystage Plus          | A2+  |
| -3.23      | -2.21 | Waystage               | A2   |
| -4.29      | -3.23 | Breakthrough           | A1   |
| -5.39      | -4.29 | 'Tourist'              |      |

# GSE: Rationale

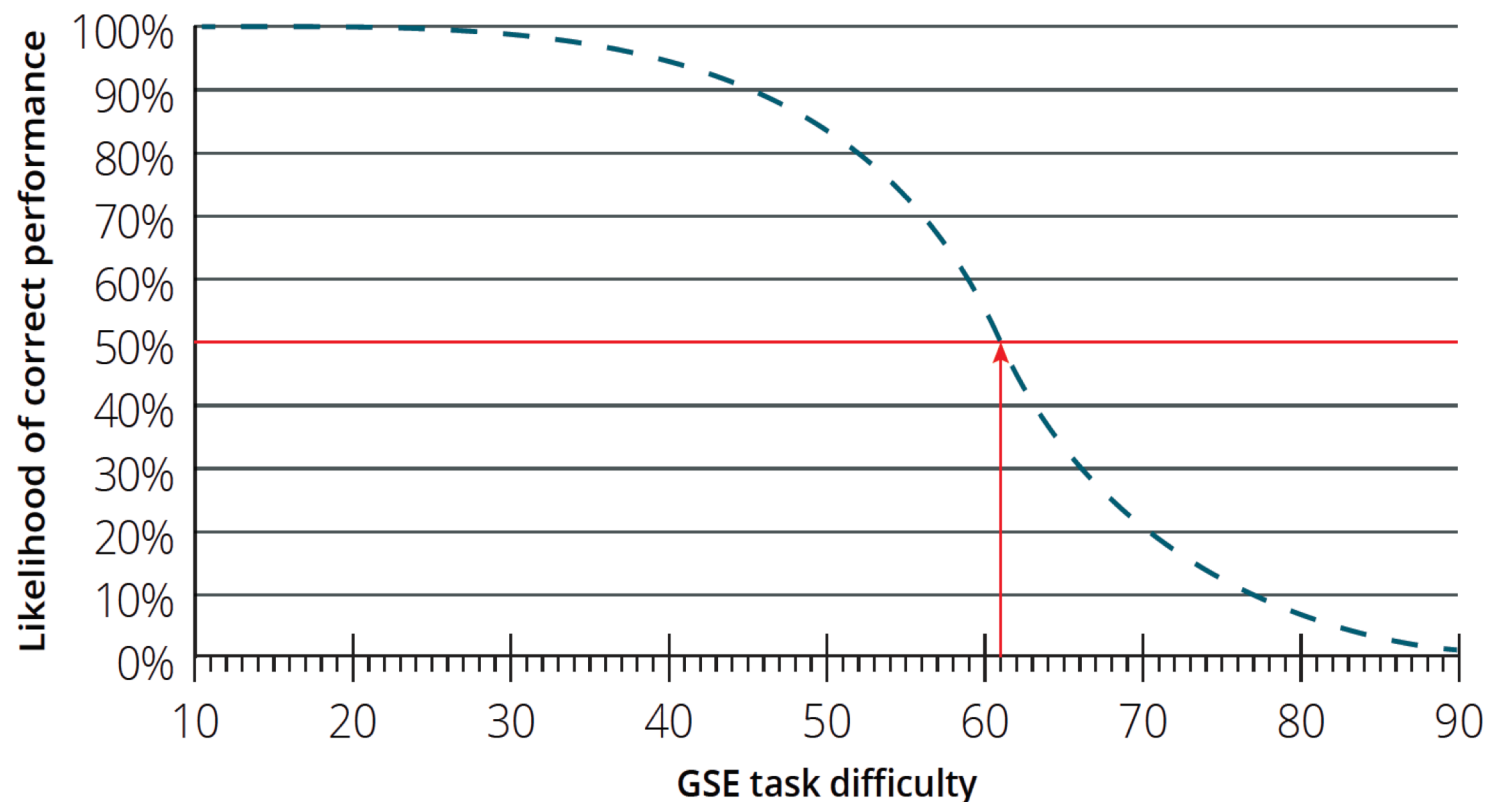
- We developed the [Global Scale of English](#) (GSE) to help teachers measure learner progress more accurately than is possible with the current six-level CEFR model.
- Professor John de Jong, who was originally opposed to removing the three levels from the CEFR, converted Brian North's original data to a positive scale from 10 to 90. This turned the complex difficulty ratings (which had decimal places and negative values) into something more accessible and motivating for students and teachers.
- The GSE not only brings back the **three 'missing levels'** which were removed, but the newly-developed GSE Learning Objectives extend the current CEFR can-do statements to provide more information for each of the four skills; reading, writing, listening and speaking.
- By aligning our courses with the GSE, we are giving learners more hours of exposure to the target language. This allows them to move through the levels in a realistic amount of time with fresh can-do statements that have been rated by over 6,000 teachers worldwide.

# The relation between GSE and CEFR

| CEFR          | Global Scale of English |  |
|---------------|-------------------------|--|
| Below A1      | 10-21                   |  |
| Below Tourist | 10-12                   |  |
| Tourist       | 13-21                   |  |
| A1            | 22-29                   |  |
| A2            | 30-35                   |  <p>GSEでは A2, B1, B2 の幅が<br/>A1, C1 よりもかなり広い</p> |
| A2+           | 36-42                   |  |
| B1            | 43-50                   |  |
| B1+           | 51-58                   |  |
| B2            | 59-66                   |  |
| B2+           | 67-75                   |  |
| C1            | 76-84                   |  |
| C2            | 85-90                   |  |

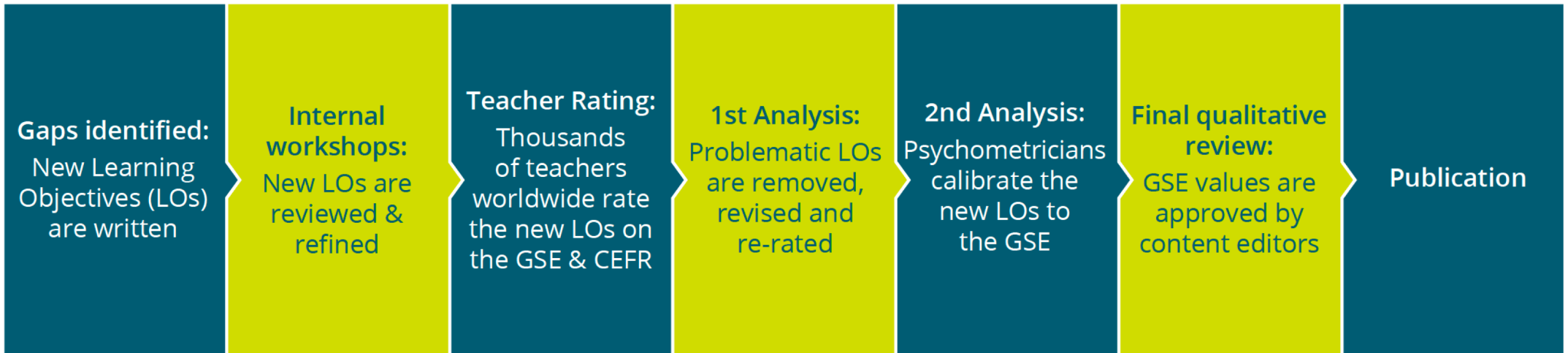
# GSE point

- If proficiency is defined as a point on a scale, e.g. 61 on the GSE, then a learner is expected to be able to perform 50% of all tasks which are at 61 on the GSE or to have a 50% chance of being able to perform any task at 61 on the GSE.

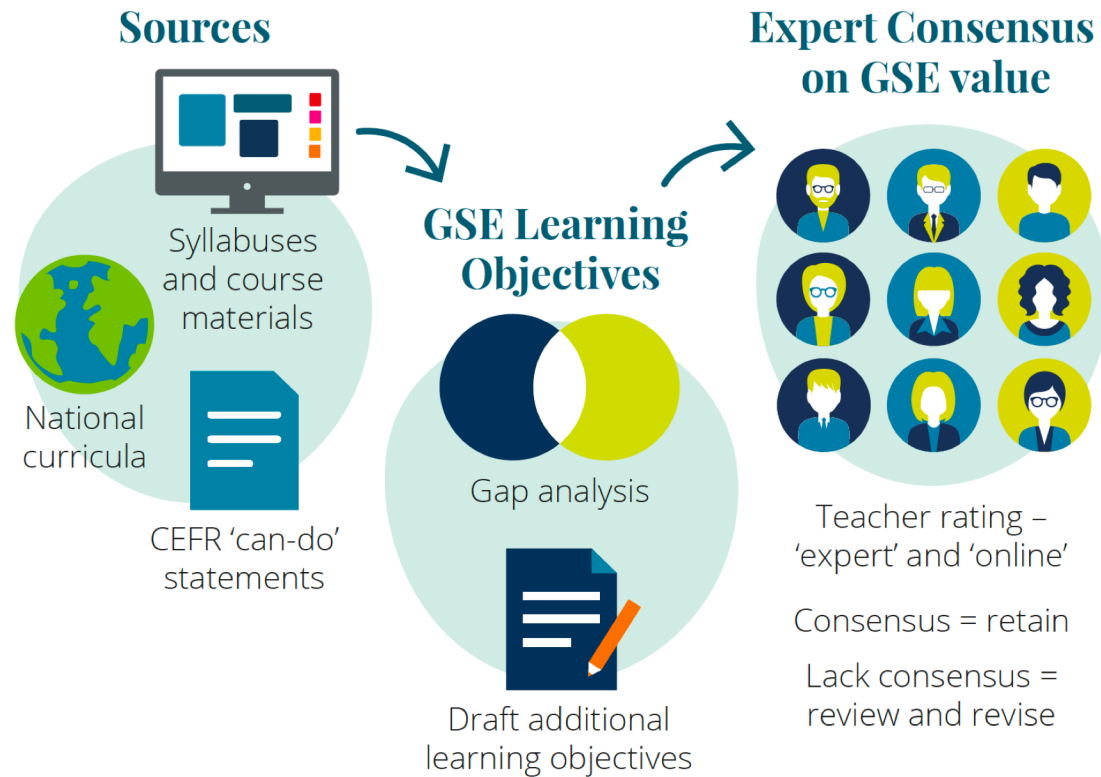




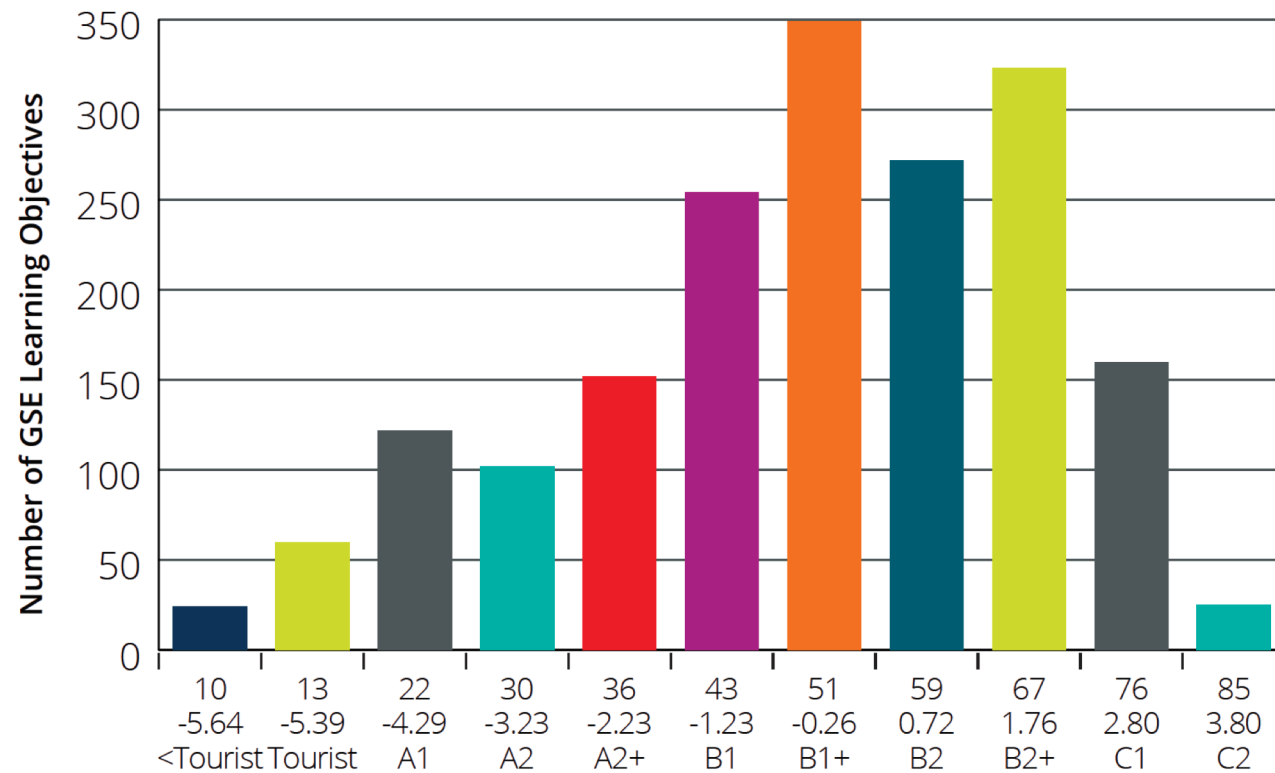
# The development workflow



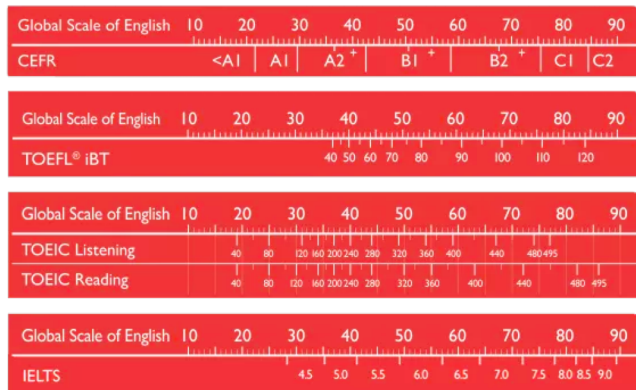
# Identifying gaps and writing new GSE LOs



# The distribution of the GSE values for the new LOs



# Aligning various resources to GSE



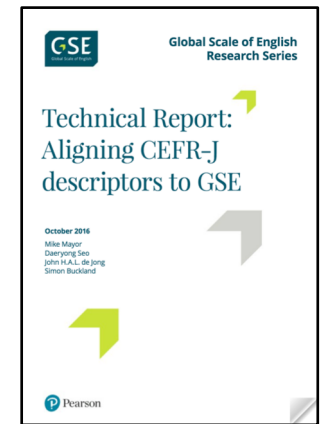
Various proficiency tests



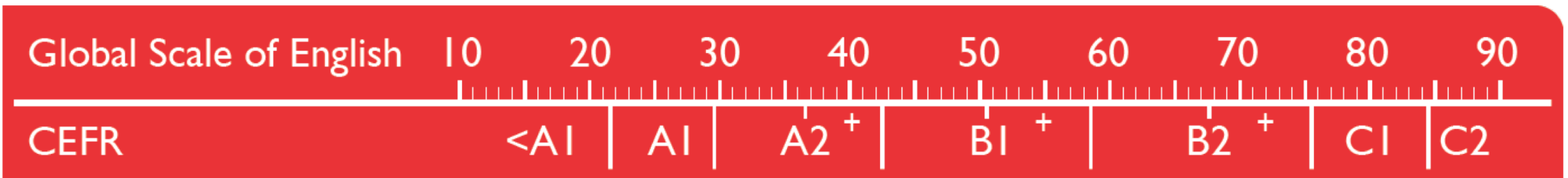
Vocabulary



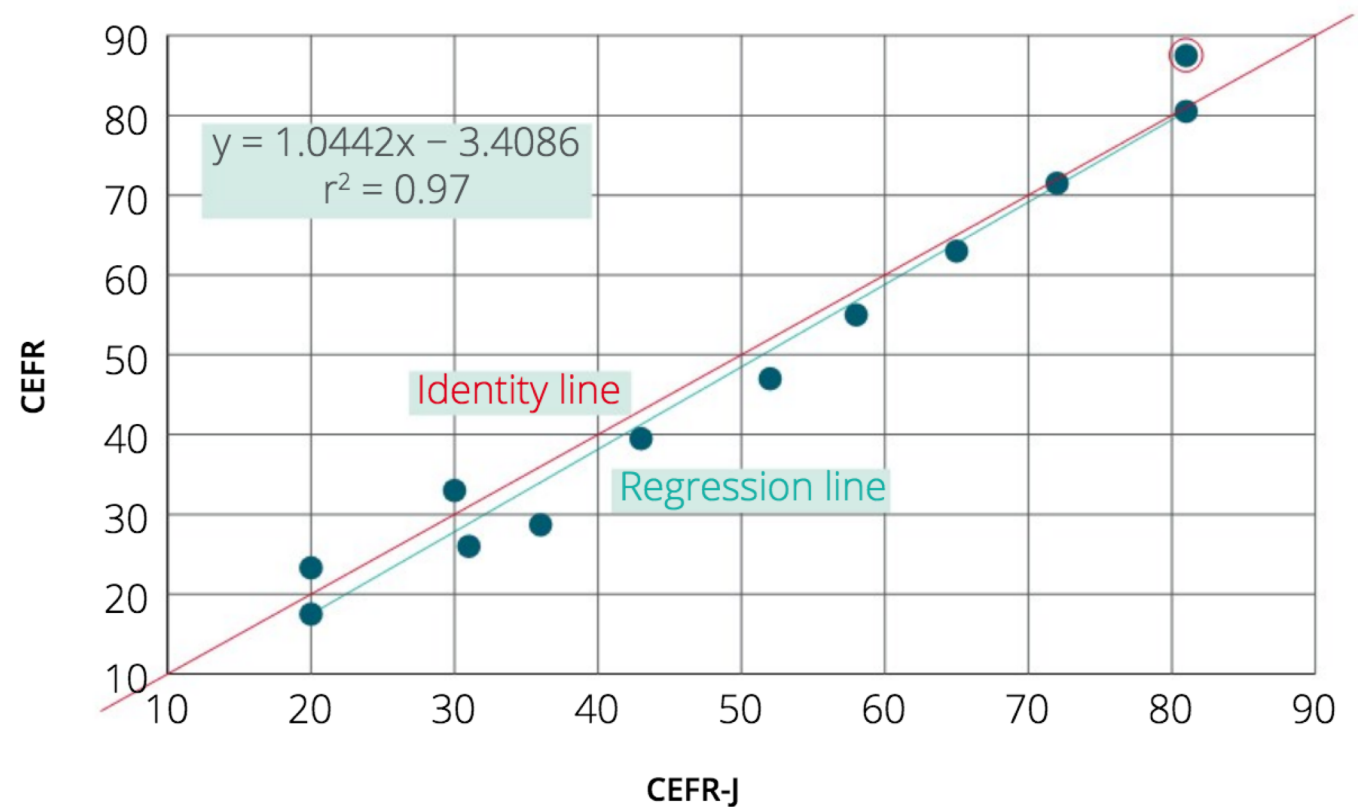
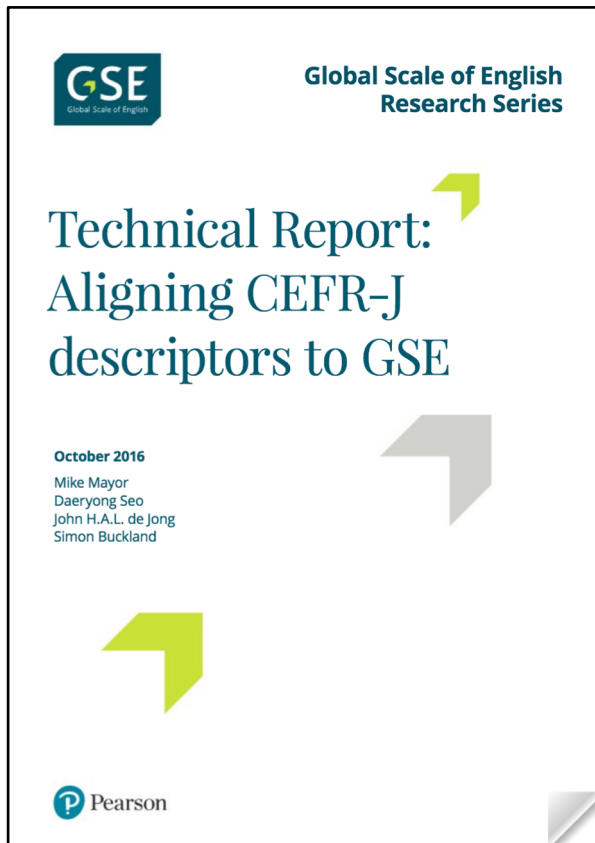
Grammar



CEFR-J



# Alignment between CEFR-J and GSE



# GSE Teacher Toolkit

- The following information is available on the GSE scale:
  - Learning objectives
  - Grammar
  - Vocabulary
- Let's take a look at the database
- <https://www.english.com/gse/teacher-toolkit/user/lo>