



Performance Parts



Service Tool Catalog

for

Truck/Trailer, Container, Marine



Service Tool Catalog

Introduction

This service tool catalog identifies service tools used to perform service on transport refrigeration equipment manufactured by Carrier Transicold. Service tools included in this catalog are recommended tools that are considered necessary for proper service.

This catalog is broken down into major tool categories listed on page i. Also, this catalog includes both a pictorial and descriptive reference to most tools listed. This is intended to make it as simple as possible to find the service tools required.

Ordering Instructions

All orders and inquiries for parts must include:

- Part number
- Description of part as shown
- Quantity required

Address all correspondence for parts to the following address:

Carrier Transicold Division
Performance Parts Group, TR-20
P.O. Box 4805
Syracuse, NY 13221

Fax: (315) 432-3778

email: ppg.customerservice@carrier.com

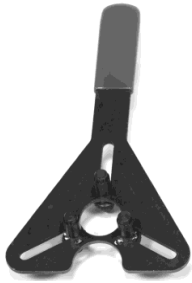
How to use this manual

Please take a few minutes to read this page. It explains the content and structure of this manual, which will make it easier to find the tools you need.

Section 1: Compressor and Clutch This section contains tools used on compressors and clutches, including spanner wrenches, clutch removal tools, unloader ring pliers, valve pade blank-off kits, sight glass wrenches, sleeve pullers, bearing pullers, and more.
Section 2: Electrical This section contains electrical tools, including meters, testers, diagnostic tools, grounding grounding straps, extractors, crimpers, removal tools, terminals, splice kits, cables, battery packs, software, software cards, and more.
Section 3: Engine This section contains tools used on engines, including testers, hose replacements, charts, adapters, install tools, puller sets, wrenches, meters, lifting tool, allignment rod, and more.
Section 4: Fittings This section contains fittings, including elbows, caps, quick connectors, Schrader valve cores, adapters, and more.
Section 5: General Tools This section contains general tools, including gauges, hoses, strobe lights, testers, heat gun, thermometers, meters, probes, sensors, sockets, air gap guage tools, seal drivers, driver tools, wrenches, rivnut install kits, lifting tools, and more.
Section 6: Refrigeration Tools This section contains refrigeration tools, including manifold gauge sets and accessories, hoses, gaskets, couplers, o-rings, oil pump, vacuum pump, vacuum gauge, refrigeration wrenches, refrigerant analyzer, acid test kits, leak detectors, refractomers, and more.
Section 7: Shop Supply, Cleaners and Chemicals This section contains general shop supplies, including compressor oil, grease, paint, coil cleaners and sanitizers, sprayers, insulation, leak detectors, flushes, towels, oil test kits, and more.

Section 1 - Compressor and Compressor Clutch

Clutch Tools



Wrench, Spanner for Clutch Armature Spanner wrench for holding the armature plate on clutches. The holding pins are adjustable for use on most industry automotive clutches .

07-00240-01



Bearing Driver for Housing (HUB) Mounted Clutch Rotor installation tool for housing -mounted clutches. Used to tap the inner race onto the compressor hub.

07-00241-00



Socket, Spanner Nut Large with Grease Fitting Socket for spanner nut on housing -mounted clutches. Used on the following spanner nuts: 34 -01304-00 twin port compressor , 34 -06083 -00, and 34 -01161 -00.
NOTE: Outside dia meter is 3.5 " ,inside diameter is 2.75" - where teeth grab on nut is approx imately 3" dia meter.

07-00242-01



Socket, Spanner Nut Small without Grease Fitting Socket for spanner nut on housing -mounted clutches. Used on the 34 -01162 -00 spanner nut.
NOTE: Outside dia meter is 2.75 " - where the teeth grab the spanner nut is approx. 2.5" dia meter.

07-00242-02



Trailer Unit Standby Clutch Adjustment Tool

Used to adjust the standby clutch shoes on trailer units.

07-00455-00



Trailer Unit Standby Clutch Bearing Press Tool

Used to press in the bearing on trailer unit standby clutches.

07-00456-00

Section 1 - Compressor and Compressor Clutch



Bolt, Clutch Removal, 7/8-14X4"

Used to remove the clutch on 05G compressors

07-00381-00



Pliers, Unloader Ring

Used to install the unloader valves on hot gas bypass compressors. Pliers compress piston ring.

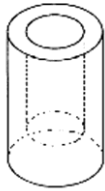
07-00223-00



Wrench (Special) Compressor Oil Pan

Used to tighten compressors base plate mounting bolts with compressors installed.

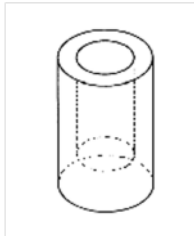
07-00267-01



05G Shaft Seal Tool

Used to install new bellows-style shaft seal on the shaft of an 05G compressor.

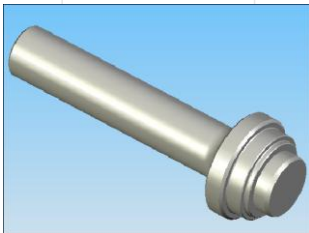
07-00460-00



Install Tool, TK Shaft Seal

Used to install the 20-22-778 one inch shaft seal on TK compressors.

07-00388-00



05G Lip Seal Install Tool

Used to drive new 05G lip seal into the seal cover plate.

07-00471-00



Filter, Felt Sock for Clean-Up, 05G

Compressors Filter (suction sock) for cleaning up systems with solid contaminants. Package of 5.

58-00869-00



Filter, Felt Sock for Clean-Up 05K Compressors

Filter (suction sock) for cleaning up systems with solid contaminants. Package of 5.

58-04165-00

NOTE: PPG no longer offers the adapter for the York style compressor "sock adapter" (14-60043-00) per Truck Engineering Rouen.

Section 1 - Compressor and Compressor Clutch



Vise Grip Holder

07-00264-00

Used for holding motor leads when replacing a terminal block on 06D compressors.



Pliers, Crimping, 06D Terminals

07-00263-00

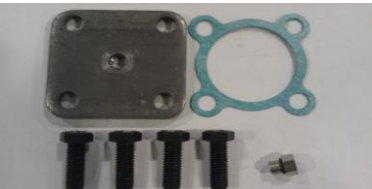
Used to crimp the motor leads into the terminal block on 06D compressors.



Kit, Valve Pad Blank-Off, Unloader Head Suction Cut-Off

17-13004-00

Cap off plate for two-bolt, 1-3/4" center line service valves.



Kit, Valve Pad Blank-Off, 4-Bolt, 2-1/2" Centerline Cap-off plate for four-bolt, 2-1/2" centerline service valves.

17-13006-00



Kit, Valve Pad Blank-Off, 2-Bolt, 1-5/8" Centerline Cap-off plate for two-bolt, 1-5/8" center line service valves.

17-13008-00



Kit, Valve Pad Blank-Off, Unloader Head Suction Cut-Off

17-21056-00

Cap-off plate for the piston on suction cut-off unloading cylinder heads.



Kit, Valve Pad Blank-Off, Unloader Head HGBP Cap-off plate for the unloader valve on hot gas bypass or suction cut-off unloading cylinder heads.

17-55013-00



Compressor Oil Refractometer

07-00316-00

Used to measure the amount of residual mineral oil in a system being changed to POE oil.

Section 1 - Compressor and Compressor Clutch



Wrench – Sight Glass

07-00450-00

This improved tool (redesigned and hardened) is used to install and remove the oil sight glass on 05G, 05K, 06D, 5D, 05D, 5F, AND 5H compressors.



Wrench – Sight Glass

20-204-244

Sight glass installation tool used on Thermo King compressors.



APU - Quick Start Compressor

07-00494-00

Used to test-start small 115VAC hermetic compressors up to 5HP. This kit was set up for use with APU compressors, but will also work with other hermetic compressors if appropriate amperage fuse is used.



APU - Fuse, Resettable, 20 Amp

07-00494-10

Used in the 07-00494-00 Quick Start kit for Comfort Pro APU compressors.

NOTE: This fuse was only sized for use on APU compressors. For all others, check the LRA and follow instructions.

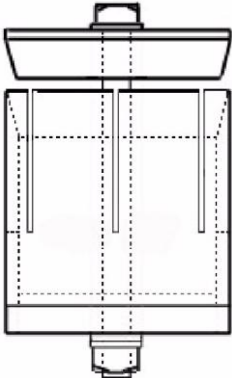


5F, 5H Main Bearing Puller

07-00346-00

Used to pull the main bearings from a 5F/5H compressor. Has a new alignment hub for assured alignment and new acme threads for pull strength.

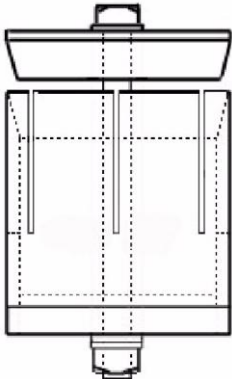
Section 1 - Compressor and Compressor Clutch



Marine - Sleeve Puller (5F Compressors)

07-00394-00

Used to pull the sleeves out of 5F compressor cylinders



Marine - Sleeve Puller (5H Compressors)

07-00395-00

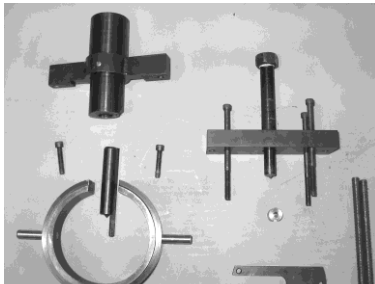
Used to pull the sleeves out of 5H compressor cylinders



Container - Terminal Box Tool – Container Scroll Compressor

07-00436-00

Used to remove and replace container unit scroll compressor terminal box



Container - Air Compressor Tool Kit

18-00099-40

Tools for rebuilding Container CA unit air compressor 18-00099.

Section 2 - Electrical

Tools and Meters



Meter, Megohmmeter

07-00502-00

Also known as a “Megger,” this meter is used to test motor winding insulation integrity on the Vector generator and all larger winding motors.

Case, Universal Megohmmeter

07-00502-10

Overall width 9.5 inches, overall height 7 inches, overall depth 2 inches

Multimeter, Digital – Pen Type

07-00262-02

This is a small probe-style multimeter, designed to be used with one hand. This feature is helpful when measuring in small, hard-to-reach areas.



- Resistance to 34 MΩ
- Continuity beeper
- 3400-count digital display plus analog bar graph
- Auto power off
- UL 3111-1 listed
- Includes alligator clip, ground test lead, spare probe tip, and installed batteries
- 3 3.4-digit LCD Display

Functional Specifications

DC Voltage

- Ranges: 340 mV, 3.4, 34, 340 V, 600 V

- Accuracy: $\pm (0.5 \% \text{ rdg} + 2 \text{ dgt})$

- Resolution: 0.1 mV in 3.4 V range

- Input Impedance: 340 mV range: $>100 \text{ M}\Omega$ Other ranges: 10 MΩ

AC Voltage (50-500 Hz)

- Ranges: 3.4 V, 34, 340, 600 V

- Accuracy: $\pm (1.5 \% \text{ rdg} + 8 \text{ dgt})$

- Resolution: 0.1 mV in 3.4 V range

- Input Impedance: 10 MΩ

Section 2 - Electrical



Multimeter, Digital

07-00243-10

This meter allows the technician to analyze electrical components ranging from basic devices to highly sophisticated solid state controllers. It features an analog and digital display to test changing or stable signals along with audible continuity. A continuous tone signals continuity; a beep signals a forward biased diode or transistor. Test leads and protective holster included.

Voltage DC: Range: 6.000V - 1000V
Voltage AC: Range: 600.0 mV-1000V
Amps AC: Range: 60.00 mA ÷ 10A
Amps DC: Range: 60.00 mA ÷ 10A
Resistance: Range: 600.0 Ω - 50 MΩ
Capacitance: Range: 1nF- 9,999 μF
Frequency: Range: 99.99Hz-
99.99kHz



Test Leads (Right Angle)

07-00243-01

For use with 07-00243-10 meter



Multimeter, Digital - Wavetek

07-00228-00

A digital multimeter with heavy-duty features for rugged protection from mishaps and adverse environments. Single selector switch makes it easy to use and saves time by enabling you to go directly to the function and range. Ranges in AC/DC voltage and current along with Ohm readings meet all your needs. Case included.

Voltage DC: 200mV up to 1500VDC
Voltage AC: 200mV up to 1000VAC
AC/DC Current: 200uA up to 2A
Resistance: 200ohm up to 2M-ohm
Diode Test: Range 0 to 2V
Current 20mA±20%
Temperature -4 degrees F to +1999
degrees F

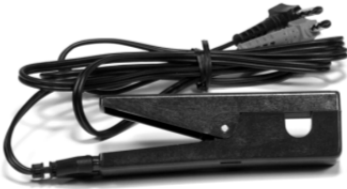
Section 2 - Electrical



Kit, Test Leads

For use with 07-00228-00 meter. Can also be used with the 07-00243-10.

07-00230-00



AC Current Clamp

This accessory extends the AC current measurement capability of P/N 07-00228 or CTD P/N 07-00243 multimeter to 150 amperes without breaking the circuit under test. The 1000:1 current transformation allows direct reading in amperes when used with the 200 mA AC current range of the multimeter.

07-00229-00



50A Single Bank AGM Battery Charger

Used to fully charge the AGM battery using a three step charging profile.

07-00498-00



Battery Tester, Heavy Duty Handheld Used to rapidly, precisely diagnose bad batteries individually or in a pack. The unit also analyzes vehicle starting and charging systems.

07-00499-00



- Quad Thermocouple input
- Differential T1-T2 and T3-T4
- Temp range -346° to +2192° F (J)
- Temp range -328° to +2498° F (K)
- Data logging
- 9,999 Memory positions
- USB interface (software included)
- Thermocouple temperature offset
- MIN, MAX, AVG & Hold
- Probe Storage
- Accepts J, K, T and E type probes

07-00504-00

Accessories Included:

4 K type probes with lead wraps
2 AAA batteries

Section 2 - Electrical



Temperature Tester – Spare Lead

07-00504-01

4-foot K-type probes with lead wraps for use with the 07-00504-00 tester.



Temperature Tester – Soft Case A soft case for use with 07-00504-00 temperature tester and probes.

07-00504-02



Tachometer, Laser, RPM

07-00488-01

Used to read RPMs on rotating devices.



Strobe Light

07-00486-00

Used to set and check engine and compressor speed. Can be used to freeze motion of pulleys, fan blades, etc. This strobe is a replacement for part number 07-00206-00.



Tester, ML2I/ML3

07-00428-00SV

Used to determine the integrity of the ML2i and ML3 microprocessors.



DataReader (Container)

12-50377-01/2.5

Includes DataReader, battery, and cable

Cable part number – 22-01743-00



Diagnostic Tool, Cab Command Cable

07-00440-00

Used to diagnose the cab command cable on 30/40/50S and 30/40/50X truck units.

Section 2 - Electrical



APX Micro Service Harness

07-00515-00

Used to check voltage leaving micro. Can also be used in conjunction with 07-00375-00SV to drive the valves on Trailer refrigeration units.



Tester, Stepper Motor Drive

07-00375-00SV

Used to check and/or operate the stepper motor on container units and XTC trailer units. This tool is also used to drive the EVXV open and closed for service diagnosis during troubleshooting.



Individual Harness for CSMV

07-00375-10

(Suction Modulating Valve SMV) Used on the 07-00375-00SV tester.



Individual Harness for EVXV

07-00375-11

(Electronic Expansion Valve EXV) Used on the 07-00375-00SV tester.



Container Stepper Jumper Assembly

07-00408-00

Container stepper jumper cable for microprocessor and stepper motor driver 07-00375-00SV.



Kit, Static Dissipate

07-00277-00

A work surface designed to prevent electrostatic discharge from damaging solid-state electronic devices and components during service.



Strap, Grounding

07-00304-00

A wrist strap grounding to prevent electrostatic discharge from damaging solid-state electronic devices and components during service.

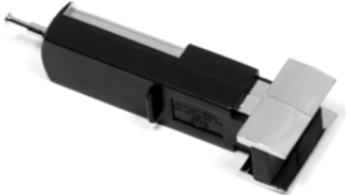
Section 2 - Electrical



Extractor (EPROM)

Extractor for EPROM on microprocessors.

07-00297-00



Inserter (EPROM)

Inserter for EPROM on microprocessors.

07-00298-00



Extractor, EPROM, I-30S

Designed to extract male and female mini-fit sr. terminals from their appropriate connectors/housings.

07-60048-00



40S/50S and 40X/50X Micro Connector Pin Tool

07-60090-00



Extractor Pin

Pin extractor for Packard terminals (connector models Metri-Pack 280, Metri-Pack 480, Metri-Pack 630, and Metri-Pack 800).

07-00400-00



Extractor Pin (AMP Connector) For removal of terminal connector pins from connectors used with auto-start and microprocessor harnesses.

07-00254-00



Terminal Tool (Removing Packard Terminals in Thermistor Part #12-00452-00) - Advanced Micro

Used to remove the terminals from the 12-00452-00 thermistor connector. Also used with Weather Pack terminals (male and female).

07-00387-00

Section 2 - Electrical



Extractor, ML-2, ML-2i and ML-3 Connector

07-00329-00

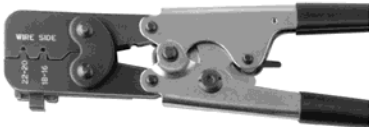
Metri-Pack 150, 280, GT150, GT280, 280 Tangless®, 280 bus bar, 630 pull-to-seat, lamp socket B1 and W3, and Metri-Pack 800 electrical connectors.



Crimper, Micro Pin

07-00268-00

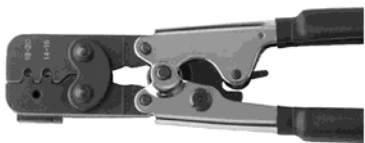
Crimper for micro pin on Container unit.



Crimper, Metri-Pack ML-2, ML-2i and ML-3 Connectors

07-00330-00

Unsealed 150 Metri-Pack, 150.1 and 150.2 pull-to-seat core and insulation



Crimper, Weather Pack

07-00370-00

Used with Weather Pack connectors and terminal pins 14 to 20 gauge.



Crimper, AMP Unsealed

07-00401-00

All-purpose crimper for AMP terminals. for wire size 20-14 AWG (core and insulation), 10-12 core only



Crimper, Unsealed

07-00496-00

Used on Vector generator power leads.



Crimper, Weather Pack

07-00519-00

This crimper is used on the Metri-Pack sealed 150 and 280 series core and insulation. 22-14awg



Crimper, XtendFRESH™

07-00545-00

Use with the fuse holder on a Container XtendFRESH system.

Section 2 - Electrical



Crimper, APX, Micro Pins Use on the APX Micro Modules, ENSCU, etc.

07-00538-00



Wire Crimper, MAC Tools Crimper can be used on various size Packard and Amp connectors.

MAC Tools Part Number: TCT1028



Terminal Removal Tool Kit

Kit used to remove terminals and reinstall new crimped terminals Includes all the 07-00397 dash numbers. (-01 through -12)

07-00397-00



Universal Hand Crimp Tool

Hand crimp tool, Deutsch connectors, and ML-2, MI-2i and ML-3 connectors.

07-00397-02



Terminal Removal Tool

Removal tool, Deutsch connectors

07-00397-01



Removal Tool, Blue

Wire size 16-18 gauge, Deutsch connectors. Primarily used on Multi-Temp units.

07-00397-03



Removal Tool, Yellow

Wire size 12 gauge Deutsch connectors. Primarily used on Multi-Temp units.

07-00397-04



Removal Tool, Green

Wire size 14-18 gauge Deutsch connectors. Primarily used on Multi-Temp units.

07-00397-05

Section 2 - Electrical



Join Terminal 14-16 Gauge

Deutsch connectors. Used on 1st generation Multi-Temps (10-pin plug) DeutschHD10

07-00397-06



Socket Terminal 14-16 Gauge

Deutsch connectors

07-00397-07



Join Terminal 14-18 Gauge

Deutsch connectors

22-01613-14



Socket Terminal 14-18 Gauge

Deutsch connectors

22-01613-15



Pin Terminal, 12-Gauge

Deutsch connectors

07-00397-10



Socket Terminal 12-14 Gauge

Deutsch connectors

07-00397-11

Section 2 - Electrical



Cavity Plug - 12-16 Gauge

07-00397-12

Deutsch connectors



Light Bulbs

16-03004-00

For use with previously offered temperature controller/diode board test module 07-00208-00.

Package of 5



Socket Terminal, Connector EC - (A-K), (L-Y)

22-01777-03

Female terminal for 22-01777-00SV and 22-01777-01SV microprocessor connectors.



Fast Splice Kit, Cable Repair

22-50396-00PK5

For 10 AWG and 11 gauge. Uses lug instead of butt connectors. Shore power cables. Best with cable diameters of approximately 3/4 inch.



Fast Splice Kit, Cable Repair

22-50396-00PK25

For 10 AWG and 11 gauge. Uses lug instead of butt connectors. Shore power cables. Best with cable diameters of approximately 3/4 inch.

Section 2 - Electrical



Splice Kit, Power Cable Repair (Without Filler)

22-50397-00

For 10 AWG and 11 gauge. Butt splices. Shore power cables. Best with cable diameters of approximately $\frac{3}{4}$ inch.



Splice Kit, Power Cable Repair (With Filler)

22-50398-00

For 10 AWG and 11 gauge. Butt splices. Shore-power cables. Best with cable diameters of approximately $\frac{3}{4}$ inch.



Advance Micro Card Drive to PC Parallel Port

07-00438-00

Reading Advance PCMCIA cards and to reprogram software cards.



Advance Micro Card Drive to PC USB Port

07-00439-00

Reading Advance PCMCIA cards and to reprogram software cards.



Jumper, Config (Advance Micro) Config Mode Jumper - White Wire. Used to put Advance micro into Configuration

22-50180-00



Jumper, PC Mode (Advance Micro) PC Mode Jumper - Green Wire. Allows Advance micro to power up without turning on the SROS switch.

22-50180-01

Section 2 - Electrical



Cable, Monitor Program

22-01690-00

Used to connect a PC 9-pin serial (COM1) port to the 3-pin Packard serial port on a Summit micro (Supra, Ultra, Ultima, Extra, Solara, etc.).



Download Cable, 6-Foot

22-01737-00

Download data from Container units and Trailer DataLink with Advance micro to a PC. Used with 12-00543 and 12-50150-10 printers and other applications.



Download Cable, 20-Foot

22-01737-04

Download data from Container units and Trailer DataLink with Advance micro to a PC. Used with 12-00543 printers and other applications.



Download Cable, W Maersk Veam Connector

22-01737-01

Used to download data from the unit DataCorder Veam to Deutsch. Use with 22-01737-00.



Download Cable Palm Top

22-01737-02

Used to download data from the unit DataCorder to a palm top.



Download Cable, PC, Container

22-01737-06

Used to connect to the MA connector on Container controller to download to PC, DataReader, etc.

Section 2 - Electrical



APX USB Download Cable

Used between a PC and the APX micro.
Available in 6- and 20-foot lengths.

22-04253-00 (6')
22-04253-01
(20')



High Speed USB to Serial Adapter RS232 Interface - Used with Tru-Tech/Tru-View

USA-19HS high-speed USB to
serial adapter
3-foot USB device cable
CD with driver software and user
guide

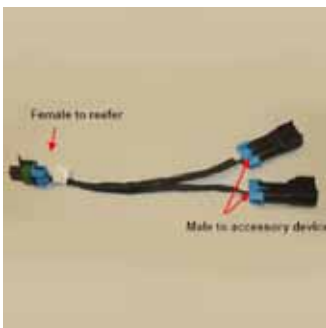
07-00503-00



Service Cable, Telematics-PC

Used to connect a PC with the PT-6000 or
RT-6000 Orbcomm device, allowing the PC to
configure the telematics device. Includes a dB-9
connector to a PC serial port on one end and a
Packard connector that interfaces into the
harness of the telematics device on the other
end. **NOTE:** Connectors not sold separately

07-00540-00



Splitter Harness, Satellite Power

This harness is a SAT-PWR (aka OC2 on older
Vector and European units) splitter. It plugs into
the SAT-PWR connector on the reefer harness
and allows 2 SAT-PWR connections. Total
amperage for two additional items added to this
harness should not exceed 3.75 A. **PTS12-060**

22-50420-00

Section 2 - Electrical



40S/50S and 40X/50X Software Upload Kit

76-61011-00



Printers NO LONGER OFFERED.

12-00543-10SV

Only Replacement Parts and Accessories available.

12-50150-10SV



Replacement Paper Roll, Pack of 5

12-50150-01

Paper for the 12-50150-10SV printer



Paper Rolls, Pack of 5

12-00543-01

Replacement paper for portable printers (12-00543-00 and 12-00543-10)



Battery Pack, Rechargeable

12-00543-02

NI-Cad rechargeable battery pack used on the portable printer (12-00543-00 and -10).



Adapter, 120 VAC

12-00543-03

Used to power the portable printer (12-00543-00 and -10) from a 120VAC power source.

Section 2 - Electrical

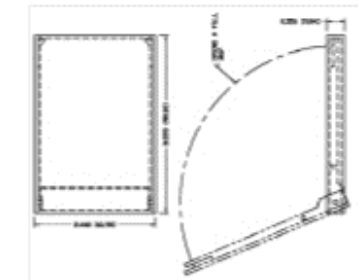


Adapter, 12 VDC Vehicle

12-00543-04

Used to power the portable printer (12-00543-00) from a vehicle.

Software and PC Cards



Protective Case

58-50109-00

Used to protect PCMCIA cards.



Card, Download, 7-Unit Capacity, NAO

12-00503-50

Used to quickly download data from Advance microprocessors.



Card, Option, DataTrak, NAO, 5-Click

12-00505-53

Five-click DataTrak option card. Used to activate the DataTrak (remote communications for satellite) option in the Advance microprocessor.



Card, Option, DataTrak, NAO, 10-Click

12-00505-52

10-click DataTrak option card. Used to activate the DataTrak (remote communications for satellite) option in the Advance microprocessor.

Section 2 - Electrical



Card, Option, DataTrak, NAO, 100-Click

12-00505-55

100-click DataTrak option card. Used to activate the DataTrak (remote communications for satellite) option in the Advance microprocessor.



Card, Configuration, Advance Microprocessor, NAO

12-00506-50

Used to install either a single configuration OR IntelliSet settings on to an Advance microprocessor. The card can be used multiple times with no limitation on the number. Customer configuration files or IntelliSet files that are available on the Carrier Transicold Information Center can be written to the card using the ReeferManager program.



Card, Option, IntelliSet, NAO, 5-Click

12-00505-71

Five-click IntelliSet Option Card. Used to activate the IntelliSet Option (preset temps for hauling products) in the Advance Microprocessor.



Card, IntelliSet Option, NAO, 10-Click

12-00505-70

10-Click IntelliSet option card. Used to activate the IntelliSet option in the Advance microprocessor.



Card, Program, Advance Microprocessor, NAO

12-00504-50

Used to quickly install new software into Advance microprocessor. Can be updated to latest software version using Reefer Manager (latest version will be supplied).

Section 2 - Electrical



Carrier Corporation
TRU-Tech & TRU-View

CARD, Program, ML3 Controller Software and Configuration **12-00594**

Used to quickly install new software into Container ML3 microprocessors (latest version will be supplied).

Card, DataBank Download **12-00615**

Used to download Container ML3 microprocessors (latest version will be supplied).

Tru-Tech / Tru-View Program **N/A**

Advance Micros Next generation of service software after Reefer Manager. This must be downloaded from NA Truck Trailer Information center – Questions contact Service Engineering.

APX USB Universal **12-00734-00**

Allows for downloads, and software and configuration files to be uploaded to APX controller.



DataTrak™ 5 click (license) USB flash drive **12-00734-01**

Same as universal but includes five DataTrak option clicks.

DataTrak 10 click (license) USB flash drive **12-00734-02**

Same as universal, but includes ten DataTrak option clicks.

TRU-Tech™ and TRU-View™ Integrated Application, USB **12-00734-05**

TRU-View™ Application, USB **12-00734-06**

Same as universal but also includes TRU-View program software.

Section 2 - Electrical



Container PC Card Adapter and Case

76-50141-00

PC card adapter enables the use of ML3 SRAM PC cards in ML2 and ML2i controllers.



Software, DataLINE

07-00421-00

The DataLine for Windows kit includes:

07-00426-00

- Software installation CD (1)
- Installation floppy disks (approximately 15)
- D User's Guide - CTD publications P/N T-303

License, DataLINE

Additional DataLINE license.



Software, Reefer Manager and Reports

12-00616

For use with Windows 95/98/ME /2000/XP. Used to set up and download Advance and Summit microprocessor and DataLink data recorders. For more information refer to service bulletin SER04-40.



DataCold 500R

79-60598-20

Used on truck units

Section 2 - Electrical



DataCold 500T

79-60598-00

Used on trailer units



Red Insulating Varnish

07-00479-00

Red glyptol varnish used on alternator studs. This varnish is usually painted on with a brush. Sold in a 2-ounce bottle.



APX CAN Bus Diagnostic Tool

07-00524-00

Used to diagnose and troubleshoot issues within the controller area network (CAN bus) on units equipped with an APX control system.



APX Display Diagnostic Tool

07-00525-00

Used to diagnose and troubleshoot issues within the display on units equipped with an APX control system.



APX Modules Diagnostic Tool

07-00526-00

Used to diagnose and troubleshoot issues within the APX module on units equipped with an APX control system.

Section 2 - Electrical



Lockout for Standby Plugs

07-00532-00



EES Diagnostic Tool

07-00533-00

Used to troubleshoot units equipped with an engine emissions control (EES) system.



EES Jumper Assembly, Tier 4, (EES/CAN Port)

07-00534-00



Lockout Clip, 460V Receptacle

07-60129-00



Dielectric Grease

46-00037-00

Seals out moisture and prevents corrosion on electrical connectors. It also disrupts the flow of electrical current, which makes it good for lubricating and sealing the rubber parts of electrical connectors.

Package Size: 3.5 ounce tube

Section 3 - Engine



Tester, Inject Nozzle

07-00140-00

Used to check and adjust the fuel Injectors in diesel engines.



Adapter Injector Line (Accessory for 07-00140-00)

07-00036-00

Adapter line for tester inject nozzle. Accessory for tester inject nozzle. (P/N 07-00140-00)



Front Seal Install Tool, Used on 4-Cylinder Kubota engines

07-00239-00

NOTE: Kubota *does not* offer a Rear Seal Install Tool.

Used to install front seal (GEARCASE) on Kubota 4-cylinder engines.



Rear Main Wear Sleeve Install Tool

07-00521-00

Used to install the 25-37385-02 wear sleeves on rear of crankshaft. 4 Cylinder Kubota.



Socket, Injector

07-00224-00

Socket for injector removal for Kubota IDI engines.

Section 3 - Engine



Injector Puller Set

07-00517-00

Used on Kubota DI engines. Comes with two adapters so it can be used on the old "DI" pencil-style injectors and the DI low emissions engines. Old part numbers were: 07-00249-00, 07-00458-00.



Carbon Ring Installation Tool, Kubota DI

07-00250-00

Used to aid in the installation of the carbon ring seal in pencil type DI injectors.



Socket, Water Temperature Sender (Advance Micro Units)

Purchase from Snap-On

Used to remove the Water Temperature Sender on Advance Units. 3/4" slotted, deep well socket. Must purchase locally or from Snap-On dealer (Snap-On part number: S6155).



Crowfoot Wrench, New Water Temperature Sensor Tier 4 units, 14mm

07-00520-00



Wrench, Davco Filter

07-00423-00

Used to remove and install the Davco fuel filter.

Section 3 - Engine



Meter, Coolant Refractometer

07-00435-00

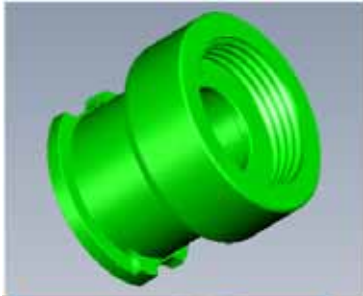
Used for testing integrity of glycol and features an illuminated refractometer. (USES: EG = ethylene glycol, PG = propylene glycol).



Coolant Hose Lubricant

02-50010-00

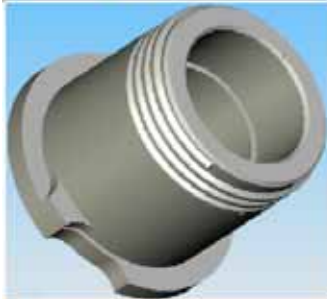
Used with Interference-fit coolant hoses on trailer units.



Coolant Bottle Test Adapter

07-00468-00

Used to pressure test new pressurized coolant bottles on trailer units. It is to be used with a standard radiator pressure tester.



Coolant Bottle Cap Test Adapter

07-00469-00

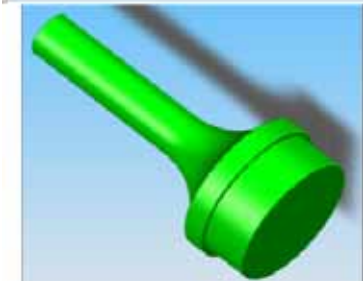
Used with a radiator pressure tester (stant or equivalent) to test the coolant bottle cap. Used on newer units with pressurized coolant bottle.



Main Bearing Install Tool

07-00472-00

Used to install the main bearing on the newer, low emission engines (starting with serial number 3S00001).

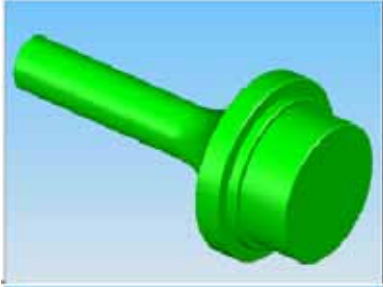


Main Bearing Extract Tool

07-00473-00

Used to extract the main bearing of the new four-cylinder, low emission Kubota engine (starting with serial number 3S00001).

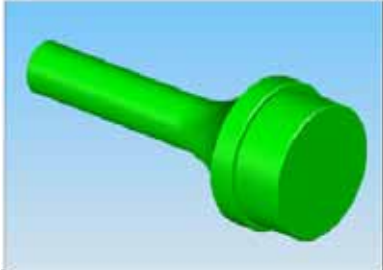
Section 3 - Engine



Main Bearing Install Tool

07-00474-00

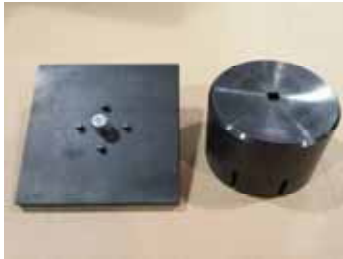
Used to install main bearing on the older four-cylinder Kubota engines (prior to serial number 3S00001).



Main Bearing Extract Tool

07-00475-00

Used to extract the main bearing on the older four-cylinder Kubota engines (prior to serial number 3S00001).



Spanner Socket and Base Plate

07-00537-00

Used to hold the fuel filter and remove the plastic ribbed fuel filter heater bowl from the fuel filter. (Fuel filter 30-01079, 30-01123, etc.)



Socket, Spanner, Heater Bowl

07-00537-11

Used to remove the fuel filter bowl from the fuel filter. (Fuel filter 30-01079, 30-01123, etc.)



Base Plate only, no socket

07-00537-02

Used with part 07-00537-11 to hold the fuel filter while the heater bowl is being removed. (Fuel filter 30-01079, 30-01123)



Crank Pulley Impact Socket

SIM-583

Used on Kubota crankshaft pulley nut. 1-13/16" (46mm) deep well impact socket.

NOTE: Must purchase locally from Snap-On or another impact socket supplier.

Section 3 - Engine

Engine Compression Tester and Accessories



Compression Tester, Engine, with Case (Gauge Style with Hold)

07-00544-00

New dial gauge style compression tester. It has a hold setting and pressure relief. Used with the 07-00541, 07-00542, 07-00543-00.



Removal Bracket, Vector Generator

SKM-5670

Used to rest the generator on during generator removal on Vector trailer units.



Engine Platform Tool

86-04751-00

Used to rest engine on during swing to remove Vector generator.



Oil Drain Tool, Vector Units

68-15763-00

Used to drain the oil from the engine on Vector Units. Often used with bracket part number 68-15706-00.



Oil Drain Tool X2, X4 Belt Drive Units

68-15763-01

Used to drain the oil from the engine on (X2/X4) trailer units. Often used with bracket number 68-15706-00.



Tachometer, Laser, RPM

07-00488-01

Used to read RPMs on rotating devices.

Section 3 - Engine



Strobe Light

Used to set and check engine and compressor speed. Can be used to freeze motion of pulleys, fan blades, etc. This strobe is a replacement for part number 07-00206-00.

07-00486-00



Flywheel Locking Tool

Used on Vector trailer units to prevent the engine from turning while working on the generator.

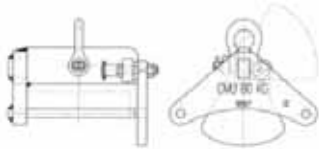
07-60083-00



Alignment Rods, Vector Generator, 3 pack

Used on Vector trailer units to remove/install the generator on the engine.

07-60121-00



Lifting Tool, Vector, Generator

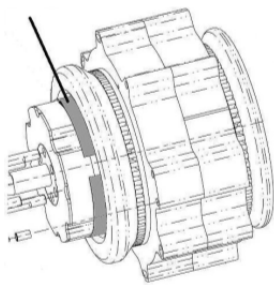
Used on Vector trailer units as a generator service tool. Compatible with all Vector Generators.

07-60085-02

Locking Ear and Nut

Used on 07-60085-02. It is designed to be offered as a replacement part, but also as an option to upgrade the older -00 and or/-01 tools to make them the latest mandatory -02 tool.

07-60085-50



Shim, Vector Generator Service

Used to protect generator windings during service/shipping.

54-00630-25



Adapter, Dial Gauge Compression Tester, Injector hole

Used on the newer gauge style compression tester (07-00544-00) to get the pressure from the Injector hole instead of the glow plug hole.

07-00541-00

Section 3 - Engine



Adapter, Dial Gauge Glow Plug Hole, 8mm
Used on the newer gauge style compression tester (07-00544-00) to read pressure from the glow plug hole.

07-00542-00



Adapter, Dial Gauge Glow Plug Hole, 10mm
Used on the newer gauge style compression tester (07-00544-00) to read pressure from the glow plug hole.

07-00543-00

Diesel Engine Compression Tester and Accessories



Compression Tester (Diesel Engines 150-850PSI)

07-00179-01

Kit comes with compression tester, handle, high-pressure tester hose assembly, fitting to go from the injector adapter to the high pressure tester hose, replacement cards, and an instruction CD.

NOTE: The following accessories/adapters (07-50005-00 and 07-00179-02 through -10) are used with this item.



Hose Replacement, Hose Assembly (Accessory for 07-00179-01 compression tester)

07-00179-08



Adapter, Injector to Tester (Accessory for 07-00179-01 compression tester)

07-00179-09



Chart Holder - Orange Plastic (Accessory for 07-00179-01 compression tester)

07-50005-00

Used to hold the compression charts on the compression tester 07-00179-01.

Section 3 - Engine



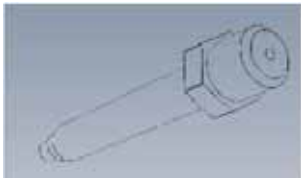
Charts, 10-40 Bar (Accessory for 07-00179-01 compression tester)

07-00179-04



Charts, 150-850PSI (Accessory for 07-00179-01 compression tester)

07-00179-07



Compression Test Adapter Tier 4 engines

07-00484-00

Used with (07-00179-01) to check compression through the injector hole.



Adapter, Mercedes OM636 (Accessory for 07-00179-01 compression tester)

07-00179-03



Adapter, Kubota 10mm Glow Plug (Accessory for 07-00179-01 compression tester)

07-00179-05



Adapter, Compression Tester 8mm Glow Plug (Accessory for 07-00179-01 compression tester)

07-00179-10



Adapter, Kubota CT4-114 Engine (Accessory for 07-00179-01 compression tester)

07-00179-06

Section 4 - Fittings



**Fitting, Male 1/4" NPT X Male 1/4" Flare
Access Port with Schrader**

06DA-403-844



**7/16-20 Male Straight Thread O-Ring x 1/4"
Male Access Schrader
Access fitting**

0TB0889



**Fitting, Male 1/8" NPT X Male 1/4" Flare
Access Port with Schrader**

17-13010-00



**Cap, 1/4" Service Valve Gauge Port (Should
not be used on Schrader Type Ports)**
Acorn style gauge port cap. **NOT FOR USE ON
SCHRADER TYPE PORTS.**

40-00086-04



**Cap, 1/4" Flare (For use on Schrader Type
Ports) For use on SCHRADER type gage ports
(includes rubber O-Ring/gasket)**

DD19CA061



Cap, 1/4" Flare, Plastic

58-60232-00

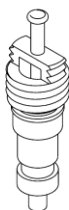
This is a 1/4" plastic cap used to cap off the
Schrader access fitting after service. It comes
with an o-ring which is not sold separately.



Cap, 3/8" Flare

40-00086-06

Used on trailer unit king valves.



Core, Schrader Valve

14-00351-00

Schrader valve core used in the standard 1/4"
Schrader fittings. Typically used on the older CFC/
HCFC access fittings such as 40-01124-00.
Package of 10.

Section 4 - Fittings



Schrader Core, 3/8", 134A

40-60087-01

Standard Schrader core for 134A access fittings. Primarily used for Manuli in-line fittings, but can also be used with other access valves.

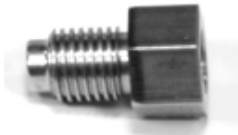


Adapter, R134A (LO)

40-01184-00

This is a 134A adapter that mounts on a 1/4" flare, low side.

NOTE: Replacement o-ring is part number 40-01184-50.



Adapter, 1/4" NPT X 1/2" Acme

07-00301-00



Male 1/4" NPT X Female 7/16" Straight Thread O-Ring

07-00319-00



Plug, 7/16"-20 Straight Thread, O-Ring

17-44037-00



Plug, 9/16"-18 Straight Thread, O-Ring

17-44706-00



90 Elbow Swivel Female 7/16-20 Straight Thread O-Ring X M13

40-00519-00



90 Elbow Swivel Female 7/16-20 Straight Thread O-Ring X M15

40-00519-01



Quick Connector Nipple (R134A Low Side) X M13 (with Cap)

40-00520-00

Section 4 - Fittings



**Quick Connector Nipple (R134A Low Side) X M15
(with Cap)**

40-00520-01



Cap, Low Side R134A Quick Connect Fitting

40-00520-02



Cap, High Side R134A Quick Connect Fitting

40-00520-03



**90 Elbow Swivel R134A Male M13 Straight Thread x
Female M13**

40-00523-00



**90 Elbow Swivel R134A Male M15 Straight Thread x
Female M15**

40-00523-01



**90 Elbow Male 1/4" NPT x Female M13 R134A Low
Side**

40-00524-00



**90 Elbow Male 1/8" NPT x Female M15 R134A High
Side**

40-00524-01



**Male 9/16-18 Straight Thread O-Ring x Female 1/4"
NPT**

40-00528-00



**Male 7/16"-20 Straight Thread O-Ring x Female 1/4"
NPT**

40-00528-02

Section 4 - Fittings



Coupling, R134A

40-00529-00

7/16" X 20 coupling size by M8 quick connect



Tee, Female, 1/4" Flare Swivel x Male 1/4: Flare x LS Quick Connect

40-00545-00



Schrader Fitting Body, 1/4" Male Flare, Braze-in

40-01124-00

This Schrader can be brazed into most refrigerant lines and used as an access fitting for service. it is 1/4" flare by 1/4" ID or 3/8" OD sweat.



90 Elbow Male 9/16 – 18 Straight Thread O-Ring x Female 1/4" NPT

40-01166-00



90 Elbow Male 7/16 – 18 Straight Thread O-Ring x Female 1/4" NPT

40-01166-01

NOTE: O-ring not sold separately.



Tee, Snubber, 1/8" NPT x 1/8" NPTF

79-00965-00

Pressure switch mounting tee (Trailer products)



Adapter, Female, 1/4" x Quick Connect (High Side)

AC302-438



Adapter, Female, 1/4" x Quick Connect (Low Side) with Cap

AC302-439



Adapter, 90 Degree Female 1/4" Flare x Quick Connect (High Side)

AC302-440

Section 4 - Fittings



Adapter, 90 Degree Female 1/4" Flare x Quick Connect (Low Side)

AC302-441



Retrofit Kit, Service Ports for 134A Fittings (Automotive)

AC302-458

Section 5 - General



Gauge, Magnehelic

07-00177-00

Used to accurately set the defrost air switch, which initiates defrost cycle. Includes carrying case, fittings and aspirator.



Hose, Replacement, 9-Foot

07-00177-05

Replacement hose for the 07-00177-00.



Aspirator

07-00177-01

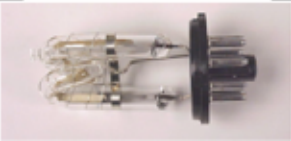
Replacement aspirator for Magnehelic gauge (part number 07-00177-00).



Strobe Light

07-00486-00

Used to set and check engine and compressor speed. Can be used to freeze motion of pulleys, fan blades, etc. This strobe is a replacement for part number 07-00206-00.



Flashtube, Xenon (for 07-00206-00 Strobe Light)

07-00206-01

Replacement bulb for strobe light (part number 07-00206).



Belt Alignment Tool - Laser

07-00463-00

Laser alignment tool quickly identifies the two most common types of pulley misalignment - parallel offset and angular - that reduce belt and pulley service life, and produce unwanted noise.

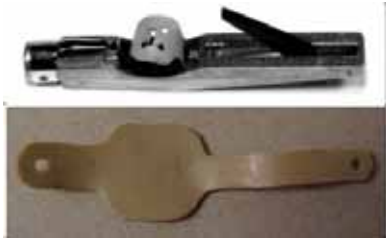


Gauge, Belt Tension

07-00203-00

Used to adjust belt tension of all non-cogged V-belts. Proper belt tension increases both bearing and belt life.

Section 5 - General



Tester, Belt Tension
Used to test belt tension.

07-00253-00

Rubber Band
Replacement part for belt tension tester (part number 07-00253-00).

07-00253-01



Heat Gun, 120V-50/60hz - 570-1000 degrees Fahrenheit

07-00487-00

This heat gun replaces part number 07-00256-00, which is no longer available from the supplier. It is used to heat shrink-tubing on wiring connectors and splices. It can also be used to defrost coils, although caution should be used as the high temperature setting will actually melt the aluminum fins.



Thermometer, Pocket

07-00261-00

Bi-metal thermometer for measuring temperature from -40 to +160 degrees Fahrenheit.



Thermometer, Digital, Pocket (Degrees Fahrenheit)

07-00485-00

This is a straight digital (thermistor type) pocket thermometer with a 3-foot probe. Reads in degrees Fahrenheit only.



Thermometer, Digital, Pocket (Degrees Centigrade)

07-60111-00

This is a straight digital (thermistor type) pocket thermometer with a 3-foot probe. Reads in degrees Centigrade only.

Section 5 - General



Thermometer, Non-Contact

07-00324-00

Used for checking temperatures at a safe distance. Aim the thermometer and pull the trigger for a temperature reading of 0 to 750° F (-18 to 400° C) without the danger of moving parts or getting burned. Power 9V battery with low power indicator. Features: ±2% Accuracy and LCD backlight. This meter is more advanced than the 07-00323-00 with Max -min - average temperature and high or low audio/visual alarm.



Thermometer, Infrared, Non-Contact

07-00478-00

This infrared non-contact thermometer replaces 07-00323.

- Infrared Thermometer
 - Certificate of Calibration: Yes
 - Temperature Measuring Range: -32° C to 600° C
 - Temperature Accuracy +/-: 2 F
 - Response Time: 500mS
 - Accuracy: +/- 1%
- Battery Size Code: 9V RoHS Compliant: NA



Multi-meter, Digital

07-00243-10

This meter allows the technician to analyze electrical components ranging from basic devices to highly sophisticated solid state controllers. It features an analog and digital display to test changing or stable signals along with audible continuity. A continuous tone signals continuity; a beep signals a forward biased diode or transistor. Test leads and protective holster included.



Temperature Probe (-40° F to 1,500° F)

07-00425-00

This adapter allows the 07-00243-10 Fluke multimeter to read temperature. It can read in degrees F or C. This adapter comes with one bead probe and can convert any digital multimeter with a 10mohm input into a thermometer. Accepts type "K" thermocouple probes and sensors. Accuracy: 0.5%

Section 5 - General



Temperature Probe (-40° F to 1,500° F)

07-00424-00

To be used with adapter part number 07-00425-00. This temperature probe is used in conjunction with the Fluke Multi-meter 07-00243-10. It is a universal probe that can measure air temperatures from -40° F to 1500° F, including high exhaust temperatures. This temp probe uses the type "K" thermocouple which is the most accurate and quickest responding in the in the industry today.



Sensor, Thermometer

12-00569-51

Sensor used with the old 12-50039-00 and 12-50040-00 light bar thermometers.

12-00569-52

Sensor, Thermometer – 10-Foot



Leads, 50-Foot

07-00013-02

For use with previously offered Simpson Temperature Tester, 07-00013-00.



Case, Meter, for use with 07-00013-00

07-00015-00

For use with previously offered Simpson Temperature Tester, 07-00013-00.



Rod for Servicing Self-Adjusting Idlers on FrigiKing Truck Units

07-00276-00

Rod for servicing self-adjusting idlers on FrigiKing truck units.



Barrier, Flame

07-00302-00

Used to isolate heat when working in tight quarters.

Section 5 - General



Socket, Spanner for Ultra Gearbox Fan clutch

07-00303-03

Spanner socket for Ultra gearbox clutch spanner nut. Clutch mounted on gearbox.



Socket, Spanner for Extra XT Fan clutch

07-00303-02

Spanner socket used to remove the Fan clutch spanner nut. Clutch mounted on fan shaft.



Air Gap Gauge Tool (ULTRA Clutch)

07-00360-01

Used to measure the air gap on the 90 degree gear box clutch.



Air Gap Gauge Tool, Clutch

07-00432-00

Used on the following trailer unit models: Ultima, Extra XT, Ultra XT, Ultra XTC, and Ultima XTC. Similar in design to part number 07-00360-01.



Seal Pilot, Small Ultra Gearbox

07-00308-00

Pilot for small seal on Ultra gearbox.

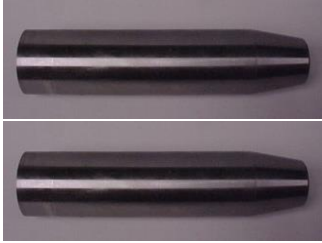


Seal Pilot, Large Ultra Gearbox

07-00309-00

Pilot for large seal on Ultra gearbox.

Section 5 - General



Sleeve Tool, Seal

Used to guide the fan shaft cap end seal during installation.

07-00339-00

Sleeve Tool, Seal

Used to guide the fan shaft flange end seal during installation

07-00341-00



Seal Driver, Small Ultra Gearbox

Driver for small seal on the output shaft (clutch side) of the Ultra gearbox.

07-00310-00



Seal Driver, Large Ultra Gearbox

Driver for large seal on the input shaft (drive end) of the Ultra gearbox.

07-00311-00



Driver Tool, Seal

Used to drive the fan shaft cap end seal during installation.

07-00340-00



Driver Tool, Seal

Used to drive the fan shaft flange end seal during installation.

07-00342-00



Driver, Bearing

Aids in the installation of the fan shaft bearing cup.

07-00344-00

Section 5 - General



Gauge, Sheave (34 Degree)

07-00364-00

Used to determine wear of sheaves



Wrench, Spanner, Fan, Clutch

07-00396-01

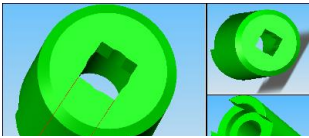
Used to hold the armature during fan clutch removal. (Used on X2 units)



Wrench, Spanner, Fan, Clutch

07-00396-02

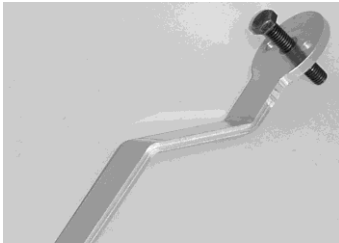
Used to hold the armature during fan clutch removal. (Used on X4 units)



Wrench, Spanner, Solenoid Evap

07-00476-00

Used to remove the stem on the remote evaporator liquid solenoid valve. Due to space restrictions, this tool attaches to a 1/2 inch drive socket ratchet.



Condenser Fan Removal Tool

07-00399-00

Used to remove part number 38-00503-00 condenser fan on 69NT40-511 units.



Crowfoot Wrench - 1 1/8"

07-00409-00

3/8" drive open end crowfoot wrench, used on NT scroll economizer valve.



Crowfoot Wrench - 1 3/8"

07-00410-00

3/8" drive open end crowfoot wrench; used on NT scroll suction and discharge valves.

Section 5 - General



Crowfoot Wrench - 2 1/8"

07-00411-00

3/8" drive open end crowfoot wrench; used on NT Scroll Suction Modulation Valve.



Bit, Torx Driver

07-00418-00

Container battery unlock tool, used to remove the TORX screws on the display to access the lithium back-up battery.



Mirror, Inspection

07-00477-00

Replacement for discontinued part number 07-00437 -00. This mirror is the same design except that it now telescopes from 10 to 14 inches in length instead of 15 inches. It has a diameter of 2.25 inches.



Rivnut Install Kit Imperial

07-00447-00

Includes rugged thread setter tool and an assortment of fractional Klik Poly-Nuts

12 ea. 8-32, 10-24, 10-32

8 ea. 1/4" x 20 and 6 ea/ 5/16 x 18

Equipped with the required nosepieces and mandrels for setting the above sizes.

Set is packaged in a storage case



Rivnut Install Kit Metric

07-00451-00

Metric version of the HP650 with metric poly-nuts, including:

25 ea. 4 and 5 mm

15 ea. 6 mm

10 ea. 8 mm threads

Thread setter tool, required nosepieces and mandrels. Set is packaged in a storage case

Section 5 - General



Tap, Thread, Left-Handed

07-00453-00

This thread tap tool is used to clean out the threads in the end of the fan shaft (50-00232-##) during service on XT units.

NOTE: The fan shaft (50-00232-##) also has external threads that hold the clutch on with a spanner nut. These threads can be cleaned and chased using a thread die, 1-9/16-18NS-3, left handed purchased locally.



Lifting Device, 20/30S and "X" Units

07-60049-00

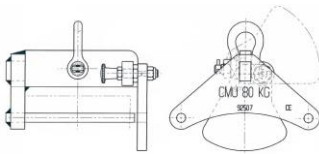
This is a 3-way hoist used to lift 20S, X and 30S, X units during installation.



Lifting Device, 40S/50S and X Units

07-60091-00

This is a hoist used to lift 40S, X/50S, X units during installation.



Lifting Tool, Vector, Generator

07-60085-02

Used on Vector trailer units as a generator service tool.

Locking Ear and Nut

07-60085-50

Used on 07-60085-02. It is designed to be offered as a replacement part, but also as an option to upgrade the older -00 and -01 tools to make them the latest mandatory -02 tool.



Removal Bracket, Vector Generator

SKM-5670

Used to rest the generator on during generator removal for Vector trailer units.

Section 5 - General



Engine Platform Tool

86-04751-00

Used to rest engine on during swing to remove Vector generator.



Threaded Rod, Vector Generator Removal

07-60121-00

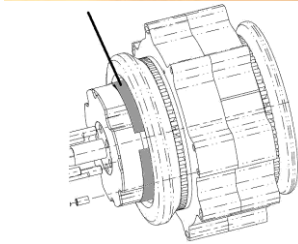
Used on Vector trailer units to remove/install the generator on the engine.



Flywheel Locking Tool

07-60083-00

Used on Vector trailer units to prevent the engine from turning while working on the generator.



Shim, Vector Generator Service

54-00630-25

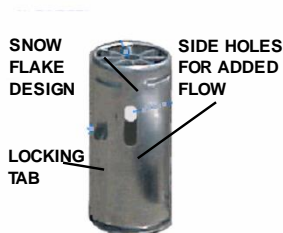
Used to protect generator windings during service/shipping.



Rain Cap – Flip Top

30-00210-00

This universal flip top rain cap is used to keep debris and moisture from entering the exhaust pipe.



Anti-Siphon Tank Insert

65-50001-00

These 1.875 inch ID tank inserts are designed to foil even the most determined thief. Made from the finest quality materials, they offer the following key benefits:

- Easy snap-in installation
- Self-locking when snapped in
- 60 gallon-per-minute flow rate
- No hassling with keys and locking fuel caps
- Low cost

Section 5 - General



Epoxy Repair Kit for Evaporator Pods

76-50063-00

This can be used on fiberglass or to repair the composite/plastic pods. Two-part resin epoxy, one roll fiberglass cloth 3" wide by 3'.

Section 6 - Refrigeration



Manifold Gauge Set

07-00294-00

Used on R134a systems; gauges read in PSI. Hoses are barrier type with quick connect couplers on the high and low side hoses and 1/2 Acme fitting on the center hose.



Manifold Gauge Set

07-00294-05

Used on R134a systems; gauges read in bar. Hoses are barrier type with quick connect couplers on the high and low side hoses, and 1/2 Acme fitting on the center hose. Includes: Hose set 07-00307-00, coupler 07-00307-04 and coupler 07-00307-05.



Manifold Gauge Set, Kit CFC

07-00314-00

Used on R-12, R-22, R-500 and R-502 systems. Hoses are 60 inch barrier type hoses with anti-blowback valves on the service ends. Includes: hand wheels 07-00237-04, gauge 07-00237-05, gauge 07-00237-06, hose set 58-04030-00



Manifold Gauge Set, R744 (C02)

07-00527-00

Used on R744 systems; gauges read in bar. Hoses are barrier type with quick connect couplers on the high and low side hoses, and 1/2 Acme fitting on the center hose.



Manifold Gauge Set, R134A, Container

07-00528-00

Used on R134a Container units. Gauges read in PSI. Hoses are barrier type hoses with quick connect couplers on the high and low side hoses and 1/2 Acme fitting on the center hose.



Handwheel Package

07-00237-04

Hand wheel set for most older gauges. Replacement wheels for the 07-00294-05 and older Robinair sets.



Low Side Compound Gauge for CTD P/N 07-00294-00

07-00294-01

Low side compound gauge for P/N 07-00294-00. Gauge reads in PSI.

Section 6 - Refrigeration



**High Side Pressure Gauge for CTD P/N
07-00294-00**

07-00294-00

High side gauge for P/N 07-00294-00. Gauge reads in PSI.



Compound Gauge for CTD P/N 07-00314-00 CFC

07-00237-05

Low side compound gauge for P/N 07-00314-00.



**High Side Pressure Gauge for CTD P/N
07-00314-00 CFC**

07-00237-06

High side compound gauge for P/N 07-00314-00.



Hose Set

58-04030-00

Replacement hose set for manifold gauge set (P/N 07-00314-00).



Hose Set (Consists of 07-00307-01, -02, -03)

07-00307-00

Replacement hose set for manifold gauge sets (P/N 07-00294-00 and 07-00294-05). Includes Hoses, 07-00307-01, 07-00307-02 and 07-00307-03.



Hose, Yellow

07-00307-01

72 inches long, barrier type. Replacement hose for use on center connection of manifold gauge sets (P/N 07-00294-00 and 07-00294-05).

Section 6 - Refrigeration



Hose, Red

72 inches long, barrier type. Replacement hose for use on high side connection of manifold gauge sets (P/N 07-00294-00 and 07-00294-05).

07-00307-02



Hose, Blue

72 inches long, barrier type. Replacement hose for use on low side connection of manifold gauge sets (P/N 07-00294-00 and 07-00294-05).

07-00307-03



Gasket

Replacements for manifold gauge hoses 1/4 inch. Package of 6.

07-00237-12



Gasket

Replacements for manifold gauge hoses 3/8 inch. Package of 6.

07-00237-13



Coupler, Quick-Connect, Gauge Hose Low Side R134A

Quick connect couplers for low side hose on gauge set (P/N 07-00294-00 and 07-00294-05). Uses gasket 07-00331-00 and O-ring 42-50017-00.

07-00307-04



Coupler, Quick-Connect, Gauge Hose High Side R134A

Quick connect couplers for high side hose on gauge set (P/N 07-00294-00 and 07-00294-05). Uses Gasket 07-00331-00 and O-ring 42-50018-00

07-00307-05

Section 6 - Refrigeration



Gasket

These are replacement O-rings for the hose side of couplers 07-00307-04 or 07-00307-05. Package of 6.

07-00331-00



O-Rings (Low Side, smaller than high side)

These are replacement O-rings for the connection side of quick-connect coupler 07-00307-04. Package of 10.

42-50017-00



O-Rings, (High Side, bigger than low side)

These are replacement O-rings for the connection side of quick-connect coupler 07-00307-05. Package of 10.

42-50018-00



Vacuum Gauge, Digital (Microns)

Used to measure deep vacuums in microns, down to 10 microns, for accurate dehydration vacuums.

Features:

- 2.5 X 3 inch size
- Fitted with 6-foot lead

07-00414-00

Replacement Sensor

Used on the 07-00414-00 digital vacuum gauge.

07-00414-01



Vacuum Gauge, Electronic (Microns)

Good to 1 micron with an input/output fitting for the vacuum hoses. Fittings on meter are input - 1/4 inch male flare. Output fitting is also 1/4 inch male.

07-60132-00



Vacuum Pump, Dual Voltage / Dual Frequency, 110-115/220-240 VAC 50/60 HZ

- 6 CFM (free air)
- 2 stage rotary vane type
- 1/2 horsepower
- 1/4", 3/8" and 1/2" male flare connections
- Plug not provided
- Pre-wired for 220/240 VAC (change wire terminations in accordance with motor nameplate for 110-115 volt applications)

07-00176-11

Section 6 - Refrigeration



Heavy Duty Plus II Charging/Vacuum Hose

07-00237-10

Pull a vacuum much faster with this 3/8" FFL on one end and 1/4" FFL on the other end.



Oil Pump - 1 to 5 Gallons

07-00516-00

Used to manually add refrigeration oil to refrigeration systems



Refrigeration Wrench

07-00238-00

Refrigeration wrench for service valve stems 3/16, 1/4, 5/16, and 3/8.



Refrigeration Wrench, Offset

07-00238-01

Refrigeration wrench, offset for service valve stems 3/16, 1/4, 5/16, and 3/8.



Acid Test Kit, Mineral and Synthetic Oil

07-00260-00

Acid test kit for mineral and alkyl benzene compressor oils.



Acid Test Kit, Polyolester POE Oil

07-00337-00

Acid test kit for POE compressor oils.



Total Test Acid Test Kits (6) Kits

07-00265-01

Comes with six kits under the part number. Each kit includes the case, a tool and a pack of five blue tubes for testing CFC (R-12, 22, 500, 502) refrigerants.

Section 6 - Refrigeration



(6) Packages of Replacement Blue Tubes

Replacement tubes for the TotalTest kit (P/N 07-00265-01). Each pack includes five blue tubes, two test tube caps, and a replacement o-ring for the instrument.

07-00266-00



Refrigerant Analyzer

An R40 capable refrigerant analyzer used to analyze 134A systems. Helps to keep dangerous counterfeit refrigerants out of the refrigerant supply chain.

07-00518-00



Leak Detector

Leak detector for R-12, R-22, R-500, R-502, R134A, R404A refrigerants.

07-00295-00



Element

Replacement kit for leak detector 07-00295- 00.

07-00296-00



Leak Detector

Bubble leak detector used to locate refrigerant leaks.

07-50017-00

Section 6 - Refrigeration

Programmable Charging/Recovery Meter

Three display modes - Lbs/oz; Decimal Lbs.; Kilograms

07-00315-00



- Allows automatic charging or recovery operations.
- Color-coded keypad controls
- Very high resolution - 0.2 oz./0.010 Lbs./4 grams.
- Can be used with all refrigerants.
- Advanced charge and recovery. Modes – uses tare weight and maximum capacity of cylinder to calculate maximum charge/recovery available
- User programmable memory for up to 99 different stored values.
- “Repeat” charge features removable platform and control box with prop stand/hanging hook.
- Compact design - completely portable, battery-powered with low battery indicator.

Temperature Tester - 4-Lead

07-00504-00



- Quad Thermocouple input
- Differential T1-T2 and T3-T4
- Temp range -346° to +2192°F (J)
- Temp range -328° to +2498°F (K)
- Data logging
- 9,999 Memory positions
- USB interface (software included)
- Thermocouple temperature offset
- MIN, MAX, AVG & Hold
- Probe Storage
- Accepts J, K, T and E type probes

Accessories Included:

- 4 K type probes with lead wraps
- 2 AAA batteries



Temperature Tester – Spare Lead

07-00504-01

4-foot K-type probes with lead wraps for use with the 07-00504-00 tester.

Section 6 - Refrigeration



Temperature Tester – Soft Case A soft case for use with 07-00504-00 temperature tester and probes

07-00504-02



Temperature Probe – 15-Foot Sealed 15-foot sealed temperature probe for use with the old 07-00462 meter.

07-00462-01



Temperature Probe, Air, 15-Foot Sealed 15-foot air temperature probe for use with the old 07-00462 meter.

07-00462-03



Meter, Refractometer for Compressor Oil Used to measure the amount of residual mineral oil in a system being changed to POE oil.

07-00316-00



Suction Filter Kit

Designed for use with the 05G compressor and includes all parts needed to cycle the suction gas through a replaceable element suction line filter. Kit includes two elements - a pleated filter used for solid particulate removal only and a solid core acid removal element designed for particulate, water, and acid removal.

07-00379-00



Filter, Solid Core - Acid

Replacement filter used in the 14-50056-00 suction filter shell supplied with the 07-00379-00 suction filter kit. It is the activated core for acid removal within the system.

14-50054-00

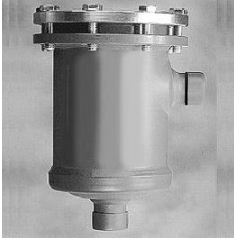


Filter, Regular Core

Replacement filter used in the 14-50056-00 suction filter shell supplied with the 07-00379-00 suction filter kit. It is the regular core for non-acidic filtering.

14-50055-00

Section 6 - Refrigeration



Suction Filter Shell

Filter shell that comes in the 07-00379-00 suction filter kit.

14-50056-00



Filter Housing – Internal

Internal filter housing used inside the filter shell to hold the filter cores in the 14-50056-00 suction filter shell.

14-50056-01



Oil Filter Kit, 05G Compressor

The compressor oil filter kit, designed for use with 05G, 05K and 06D compressors with gear oil pumps, comes with an extremely fine micron filter and a bracket to mount the filter below the compressor. The filter is used as a bypass from the compressor oil pump and will not affect compressor lubrication, even if it becomes plugged.

07-00380-00

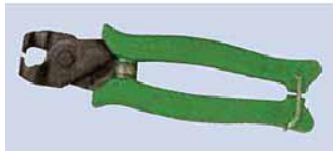
The compressor circulates oil through the filter at a rate of approximately one gallon per minute, making oil clean up fast and efficient. Experience has shown that even very contaminated systems will clean up within one to two hours of unit operation with the kit(s) installed.



Kit, Hose Cutter, Crimper, Expander and Plastic Case

Used to cut, expand, and install fittings on black Carrier refrigerant hose.

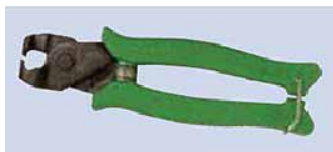
07-60117-00



Pliers, Crimping (Part of kit number 07-60117-00)

Used to connect the fitting clamps on the black Carrier refrigerant hose.

07-60117-10



Pliers, Fitting Assembly, EZ Clip Used to connect the fitting to hose on Aeroquip fittings.

07-00467-00

Section 6 - Refrigeration



Tool, Fitting Insertion (for black Carrier hose)
Specially developed for after-sales service, this tool can only be used to insert fittings in hoses. The tool is shipped with a set of jaws, an adaptor set, a spring set, and the technical procedure. The components can also be purchased separately:

07-60133-00

- **07-60133-10 – Set of jaws**
- **07-60133-20 – Set of adaptors**
- **07-60133-30 – Set of springs**

NOTE: Not designed for or applied to APU.



Tool, Pinch Off (CU Tube)
Pinch off tool for process tubes. Primarily set up for the Matson hermetic container unit, but will work on all process tubes and pinching requirements so tubing can be brazed.

07-00385-00



Valve, Piercing
Used to gain access to the refrigerant circuit for gauge reading, charging, evacuation, recovery, etc.

07-00386-00



Dispensing Gun, Static Mixing (used with Kit 76-50084-200SV)
Application gun needed to apply Durabond epoxy used for repair of inserts on container composite control boxes.

07-00391-00



Refrigerant System Quick Check Kit
Used with procedures outlined in instruction sheet 98-50554-00 (R-22/R404A Quick Check Refrigeration System Troubleshooting Procedure), this kit is designed to test the major components used in Carrier Transicold trailer refrigeration units (Phoenix Advantage, Phoenix Ultra, and Optima) that use refrigerants R-22 or R404A. Kit includes the 22-50190-00 wire harness and instruction sheet 98-50554-00.

07-50006-00

Section 6 - Refrigeration



Hex Head Security Stepper Valve

This is a specially designed hex bit (Allen wrench) that fits the adjustment screw on the stepper valve (14-00263-00) piston.

07-00434-00



Magnet, Check Valve Tool – Discharge Designed to open the seat on the X series trailer unit discharge check valve during inert brazing and unit evacuation.

14-00331-10



Magnet, Container EXV PrimeLINE Designed to manually open the electronic expansion valve during service or troubleshooting.

14-00393-52

Section 6 - Refrigeration



Magnet, Container EXV NaturaLINE Designed to manually open the electronic expansion valve during service or troubleshooting.

14-00396-20



Magnet, Operating Solenoid

Used to open solenoid valves manually when no power is available or during service. Inside diameter is 18mm or 0.75 inch

07-00512-00



Wrench, Spanner Unloader System Designed to fit securely onto the 17-40417-00 unloader valve. Tool was developed as a stronger alternative to the powdered metal tool supplied with the 17-40418 unloader kit.

07-00459-00



Refrigerant Recovery Unit – 115 VAC.
3/4HP compressor capable of direct liquid.

DIABLO-115V

Refrigerant Recovery Unit – 230/240VAC
3/4HP compressor capable of direct liquid

DIABLO-240V



Schrader Core, 3/8 inch, 134A Standard Schrader core for 134A access fittings. Primarily used for Manuli in-line fittings, but can also be used with other access valves. See fittings (Section 4) for other Schrader and special fittings.

40-60087-01

Section 7 - Shop Supply, Cleaners, and Chemicals



Oil, Compressor - Synthetic (150)

07-00274-00

Synthetic 150 for R-12, R-22, R-500 and R-502

Typical Use Trailer Units.

Package Size: Six one-gallon containers



Oil, Compressor - Mineral (150)

07-00275-00

Mineral Oil 150 for R-12, R-22, and R-500

Typical Use Trailer Units.

Package Size: Six one-gallon containers



Oil, Compressor (S-100)

07-00270-00

Synthetic 100 for R-12, R-22, R-500 and R-502 Typical Use Truck Units.

Package Size: 12 one-quart bottles



Oil, Compressor - (SW20)

07-00292-00

POE 22 for R134A

Typical Use Container

Package Size: 12 34-ounce cans



Oil, Compressor - (SW20)

07-00292-01

POE 22 for R134A

Typical Use Container

Package Size: Six one-gallon cans

Section 7 - Shop Supply, Cleaners, and Chemicals



Oil, Compressor, (PEOE 68)

POE 68 for 134A and 404A. Typical uses are for 05G and 05K compressors. Available in 1 gallon or pack of 6.

07-00317-00
1 gallon

07-00317-00PK6
6 gallons



Oil, Compressor – 50 PAG, R1A, 1 Quart can

Used in R134A refrigerant bus AC circuits with Seltec/Valeo/Zexel/Ice/Tama TM series compressors. Sold in a one quart, screw top metal can.

46-50006-00

Package Size: One-quart can



Oil Compressor (S-68)

POE 22 for R-134A and R-404A Typical use is on truck refrigeration units.

07-00318-00

Package Size: 12 ounce cans



Oil, Compressor S-68

Synthetic 68 for R-12, R-22 and R-500, R-502. Typical use, truck units.

07-00320-00

Package Size: Pack of (6) 1 quart bottles.



Oil, 32ST

Mobile Arctic 32 ST polyolester (POE) oil for R-134. Commonly used for container units with scroll compressors (69NT40-531 for example)

07-00427-00

Package Size: One quart can

Section 7 - Shop Supply, Cleaners, and Chemicals



Oil, Castrol E-68

POE Oil Typical use: 5F, 5H, 05K, 06D and 06E compressors for Marine units.

NOTE: Used to be part number 07-00405-00.

P903-1701



Oil, Refrigerant (Soltex VG 68) Gallon

For ALKYL BENZENE applications

Package Size: One gallon container

07-00430-00



Oil, Compressor (5GS)

Mineral Oil 500 for R502. Typical Use Truck Units Rotary Compressors.

Package Size: 12 one-quart bottles

07-00325-00



Oil, Vacuum Pump

Package Size: 12 one-quart bottles

07-00328-00



Oil, Compressor – POE 35 TK Trailer units with 404A, 1 gallon

POE 35 for R134A and R404A

Thermo King trailer units

07-00349-00



Oil, Compressor – POE 32 TK Container Units. Case of 4 gallons

POE 32 for R134A and R404A

Thermo King container units

Package Size: Case of (4) 1 gallon bottles

07-00354-00

Section 7 - Shop Supply, Cleaners, and Chemicals



Oil, Synthetic Gear Box 75W-90 (Ultra gear case)

07-00359-00

Synthetic gear oil 75W-- 90 for the 90 degree trailer unit gear box.

Package Size: (12), 12 oz bottles



Oil, Fan shaft , Trailer

07-00373-00

Used in the lubrication of fan shafts.

Package Size: Package of (12), 8oz bottles.



Oil, Compressor 300 Mineral

07-00377-00

Mineral Oil 300 for R-12, R-22, and R-500
Typical Use Large Bus



Grease, Heat Conductive Sealer

02-00010-00
(1 gallon)

Used to improve conduction of heat at TXV bulb location.

02-00010-0
(7.5oz)



Grease, N-2

46-50002-00

For use on TK clutches.

Package Size: 14 ounce tube



Grease, Lithium Base

07-00245-00

For use on linear solenoids. This grease is not affected by moisture, heat, or cold.

Package Size: 5.3 ounce tube

Section 7 - Shop Supply, Cleaners, and Chemicals



Dielectric Grease

46-00037-00

Used to protect electrical connections from moisture and corrosion

Package Size: 3.5 ounce tube



Sikaflex Caulk Sealant

02-00067-01

A high-quality multi-purpose non-sag 1-c polyurethane sealant that cures on exposure to atmospheric humidity to form a durable elastomer.

Package Size: 10.3 ounce tube



Loctite 609

02-00130-01

Primary usage is on clutch hub threads in Truck/Trailer.



Sealant, Pipe Fittings on 134A Units

07-00345-00

Sealant for pipe fittings on units using HFC Refrigerants. (R134A and R404A). 50ml tube.

Package Size: 50 ml tube



Red Insulating Varnish

07-00479-00

Red glyptal varnish used to seal alternator studs and other electrical generating and power studs. Prevents corrosion. Brush not included

Package Size: 2-ounce bottle



Adapter Fitting for Calibration Gas

07-00322-02

Used with 07-00322-00 calibration gas.

Section 7 - Shop Supply, Cleaners, and Chemicals



HumiSeal

07-50001-00

Used to seal the back of printed circuit boards from moisture.

Package Size: 12-ounce can



Gas, Calibration

07-00322-00

Used as a standard to calibrate the sensors on controlled atmosphere units.

Package Size: 14-ounce bottle



Adapter Fitting for Calibration Gas

07-00322-02

Used with 07-00322-00 calibration gas.



Smoke Bomb

16-00037-00

Used to test seal integrity and airflow of refrigeration unit ductwork and air systems.



Paint, Sea Spray Green

PH23GL012

Unit Touch-Up paint for miscellaneous 38 series units. Also used on: 38GR, CC, CB 48, 50, 58 units.

Package Size: 16-ounce can



Paint, Horizon Green

PH23GH012

Unit touch-up paint for 19 series units

Package Size: 16-ounce can



Coil Cleaner – Evap Foam No Rinse

NU4171-75

High performance, heavy-duty detergent. Foaming, no rinse, aerosol evaporator coil cleaner, **foams out dirt!** Six 18-ounce cans.

Package Size: Six 18-ounce cans

Section 7 - Shop Supply, Cleaners, and Chemicals



Paint, Touch-Up, Seahorse Blue

07-00480-00

This spray paint is used to touch up Seahorse units and other CTD marine blue units.

Package Size: 16-ounce can



Paint, Touch-Up, (05G and Kubota)

07-00420-00

This spray paint is used to touch up scratches on 05G compressors and Kubota engines.

Package Size: 16-ounce can



Paint, Touch-Up, Horizon Green

PH23GH017

This spray paint is used to touch up scratches on 19D and 19C units.

Package Size: 16-ounce can



Paint, Blue, Compressor

76-00397-01

Hull blue compressor paint used on CTD container units. There are two cans of primer and two cans of the epoxy paint.

Package Size: One pint can



Coil Cleaner, Citrus

07-00313-00

Citrus type coil cleaner will help clean coils, but not corrode the coil and is easy on unit paint.

Package Size: Four one-gallon bottles



Coil Cleaner, Cal-Brite

NU4133-08

Low pH or acid-based product developed for cleaning evaporator and condenser coils, **safe yet aggressive!**

Package Size: Four one-gallon bottles.

Section 7 - Shop Supply, Cleaners, and Chemicals



Coil Cleaner, Cal-Shield with Teflon

NU4148-08

Contains Teflon to shield and protect finned cooling and heating coils from dirt and corrosion.

Package Size: Four one-gallon jugs



Coil Cleaner, Cal-Shield with Teflon

NU4148-32

Contains Teflon to shield and protect finned cooling and heating coils from dirt and corrosion.

Package Size: Six one-quart bottles



Coil Cleaner, Tri-Pow'r

NU4371-88

Alkaline detergent/degreaser for cleaning air cooled condensers, evaporator coils, permanent filters, fan blades, motors, etc.

Package Size: Four one-gallon jugs



Coil Cleaner – Nu-Brite

NU4291-08

Revolutionary strong, foaming condenser coil cleaner, Alkaline. **The Acid alternative!**

Package Size: Four one-gallon jugs



Coil Cleaner – Nu-Brite

2.5 Gallon

NU4291-05

55 Gallon

NU4291-01

Revolutionary strong, foaming condenser coil cleaner, Alkaline. **The Acid alternative!**

Package Size: 2.5 gallon pail or 55 gallon



Coil Sanitizer – Bio-Fresh CD

NU4126-34

A concentrated, ready to use bacteriostat-fungistat-deodorizer formulated for use in HVACR systems.

Package Size: 12 one-quart bottles

Section 7 - Shop Supply, Cleaners, and Chemicals



Coil Sanitizer – Bio-Fresh CD

NU4126-38

A concentrated, ready to use bacteriostat-fungistat-deodorizer formulated for use in HVACR systems.

Package Size: Four one-gallon jugs



Coil Sanitizer – PanPads ACP

NU4295-34

Condensate drain pads prevent bacteria and slime in pans. Combats a broad spectrum of harmful bacteria.



Sprayer, No. 50P Poly

NU4770-00

Pump sprayer for coil cleaners, half-gallon capacity.

Package Size: One sprayer



Sprayer, No. 220CP

NU4771-30

Pump sprayer for coil cleaners, 2 gallon capacity.

Package Size: One sprayer



Sprayer, No. 300CP

NU4772-00

Pump sprayer for coil cleaners, 2 gallon capacity.

Package Size: One sprayer



Sprayer, Coil Gun

NU4774-00

Hose end sprayer with mixing valve to dilute coil cleaners.

Package Size: One gun

Section 7 - Shop Supply, Cleaners, and Chemicals



Insulation – Insulation Slugs
Thumbing grade slugs for plugging holes.

NU4216-92

Package Size: 24 two-pound boxes



Insulation – Cork Insulation Tape
Insulation tape for wrapping refrigerant lines.

NU4217-W3

Package Size: 12 – 2” x 30’ Rolls



Insulation – Foam Insulation Tape
Insulation tape for wrapping refrigerant lines.

NU4218-W3

Package Size: 12 – 2” x 30’ Rolls



Insulation – Nu-Foam Insulation Foam
A triple expanding foam that insulates as well as seals cracks, crevices and other openings. Created for refrigeration, air conditioning and heating pipes and tubing.

9 oz
NU4293-04
20 oz
NU4293-75

Package Size: 9 oz or 20 oz cans



Gas leak Detectors – Cal-Blue
Gas leak detector.

NU4182-08

Package Size: Four one-gallon jugs



Gas leak Detectors – Cal-Blue
Gas leak detector with trigger spray.

NU4182-24

Package Size: 12 one-quart bottles

Section 7 - Shop Supply, Cleaners, and Chemicals



Gas leak Detectors – Cal-Blue
Gas leak detector with dauber in cap.

NU4182-53

Package Size: 24 6-ounce bottles



Flush - Rx11 Flush, 2-in1 Display
Rx11 flushing solvent for burnouts and oil removal. Two cylinder pack with valve.

NU4300-10

Package Size: One two-cylinder pack.



Flush - Rx11 Flush
Rx11 flushing solvent for burnouts and oil removal. Single cylinder.

NU4300-11

Package Size: Four single cylinders



Flush – Rx11 Flush
Rx11 flushing solvent for burnouts and oil removal. 50 ton capacity.

NU4300-15

Package Size: 15 pound cylinder



Flush – Rx11 Flush Fitting Assembly

NU4300-99

Access valve with Acme fitting for single Rx11 cylinders.

Package Size: One valve

Section 7 - Shop Supply, Cleaners, and Chemicals



Flush – Rx Acid Scavenger

Acid neutralizer for refrigeration oil. 2oz treats up to one gallon of contaminated oil.

NU4301-02

Package Size: Six two-ounce bottles



Hand Towels – Kleen-N-Toss

Scrubbing hand cleaning towels with special cleanser.

NU4230-72

Package Size: Six 72-towel buckets



Oil Test Kit – Phase III

Refrigeration oil acid test kit.

NU4320-W8

Package Size: 24 kits

North America
Carrier Transicold
700 Olympic Drive
Athens, GA 30601 Usa
Phone: 1-706-357-7223
Fax: 1-706-355-5435

Central America
and Mexico
Ejercito Nacional 253-A Piso 5
Colonia Anahuac
11320 Mexico, D.F.
Phone: 5531501 0
Fax: 5531501 0 ext. 1005



TRANSICOLD

Carrier Transicold Division
Carrier Corporation
P.O. Box 4805
Syracuse, NY 13221 USA

www.carrier.transicold.com