

IBM Aspera

Petra Novakova
Andrea Di Muzio

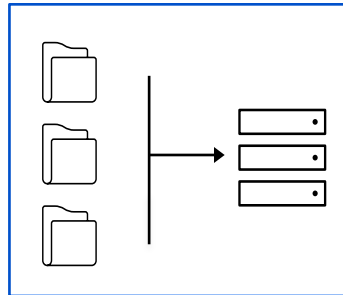
26th September 2019

IBM Aspera

Why **IBM Aspera**?

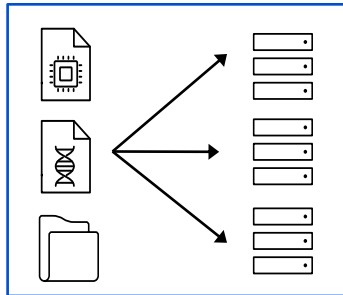
Securely move data at **high speed** to, from and across on-premises and hybrid cloud environments regardless of **size, distance, and network conditions**

IBM Aspera use cases



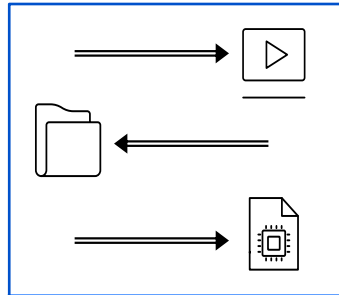
**Upload & Ingest
hi-res content**

**Field reporting &
footage
contribution**



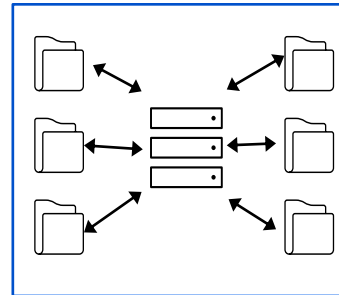
**Distribution of
Video Production
globally**

**Media
aggregation**



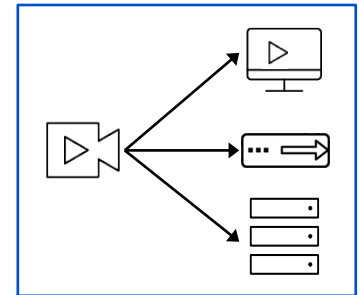
**Share & exchange
files & folders**

**Remote review &
Approval**



**End-to-end Media
file workflow
automation**

**-
ingest &
distribution**



**Stream high-quality
video & data**

Live sports events

Growing files

NETFLIX



TELEWIZJA POLSKA



FASP protocol

- Performance at any distance
- Any size, any volume
- Bulletproof security
- Any environment: on premise, private & public cloud, hybrid
- Predictable and reliable
- Adaptive bandwidth control
- Integration ready

See how fast you can go:

<https://aserasoft.com/performance-calculator/>

High-speed data transfer across hybrid cloud infrastructures



MOVING A 10GB FILE		Across US	US - Europe	US - Asia
Legacy Transport	100 Mbps	10-20 Hours	15-20 Hours	Impractical
	1 Gbps			
	10 Gbps			
Aspera FASP®	100 Mbps	14 Min	14 Min	14 Min
	1 Gbps	1.4 Min	1.4 Min	1.4 Min
	10 Gbps	8.4 Sec	8.4 Sec	8.4 Sec

FASP® software environment

CENTRALIZED ADMINISTRATION



ASPERA CONSOLE & ASPERA ON CLOUD

network-wide transfer management



AUTOMATION



ASPERA ORCHESTRATOR

transfer workflow automation



TRANSFER & DISTRIBUTION



ASPERA TRANSFER SERVER

universal file transfer node or cluster



On-premise or Cloud



ASPERA ON CLOUD

in the cloud



SaaS

CLIENT OPTIONS



Web



Desktop



Mobile



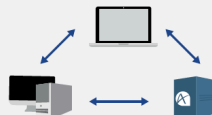
Embedded

SYNCHRONIZATION



ASPERA SYNC

multi-directional synchronization



SHARING & COLLABORATION

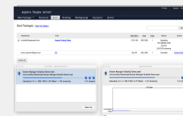
ASPERA SHARES

multi-node file sharing



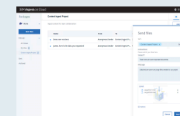
ASPERA FASPEX

collaborative file exchange



ASPERA ON CLOUD

file sharing & exchange



On-premise or Cloud



SaaS

CLIENT OPTIONS



Web



Desktop



Mobile



Embedded

What's new IBC 2019

What's New @ IBC 2019

**250 Mbps
bitrate**

Live edit feeds streamed
concurrently from Paris to LA
for the 2019 World Cup

**200
plug-ins**

Available for workflow
design in Aspera
Orchestrator

**110+
petabytes**

Of data shared & exchanged
using Aspera on Cloud since
its 2018 launch

Hybrid multicloud workflow automation

- New Automation app in Aspera on Cloud
- New Orchestrator plug-in for IBM Watson Language Translator that works with other available Watson plug-ins (captioning and video enrichment services)

Secure exchange of media assets

- Release of the Blockchain open source reference implementation
- Integration with Irdeto digital watermarking

Private Cloud native architecture

- Aspera's containerized software certified to run on Red Hat OpenShift
- Inclusion in the IBM Cloud Pak for Integration

Summary of New Available Product Features

The following features labeled early access and intended enhancements are not yet generally available, but are intended to be made generally available in a future release

Aspera on Cloud

- New Automation app to build robust, scalable event-driven workflows in the cloud
- Extended monitoring capabilities that includes multi-session transfers initiated with Connect and Drive
- Early access: Irreto watermarking capabilities
- Intended enhancements: Monitor on-premises “tethered” nodes with the Aspera on Cloud Activity app

Digital Asset Trust Framework

- New open source project to establish a digital asset trust network (DATN) built on blockchain technology

Cloud-native Aspera High-Speed Transfer Server

- New cloud-native server software running in OpenShift environment to provide simple provisioning of advanced load-balanced, highly-available Aspera transfer clusters

Aspera Orchestrator

- Enhanced performance for high-load HA systems
- Integrate Orchestrator and Aspera on Cloud workflows
- Early access: New plug-ins for media and general IT automation use
- Intended enhancements: Workflow validation tool that uses AI to assess workflow design and areas for improvement; New API to import complex workflows, enhanced user interface with new design

Aspera Faspex

- Support of “out of transfer file validation” (OTFV)
- Enable sender quotas to limit data leaks with support for byte transfer limits per sender in a given period
- Cloud Referencing in AWS/S3
- Intended enhancements: New clientless download/upload with HTTP Gateway 2.0; Multi-language support for each user’s interface; Enhanced UI & API performance with faster load times; Ability to obfuscate file names

Summary of New Available Product Features

The following features labeled early access and intended enhancements are not yet generally available, but are intended to be made generally available in a future release

Aspera Console

- Intended enhancements: Added watch folder capabilities and proxy communication; Show metadata in Console dashboard for Aspera on Cloud transfers

Aspera Drive and Add-in for MSFT Outlook

- Intended Enhancements: Drive support for multi-session transfers and package downloads for Aspera on Cloud workspaces; enhanced set up process; Outlook add-in to provide functionality support for Aspera on Cloud similar to Faspex

Aspera Connect

- Enables better detection and launching in browser with easier installation and upgrade with guided assistance
- New security updates

Aspera CLI

- Enhanced security & support for decryption & customer tags

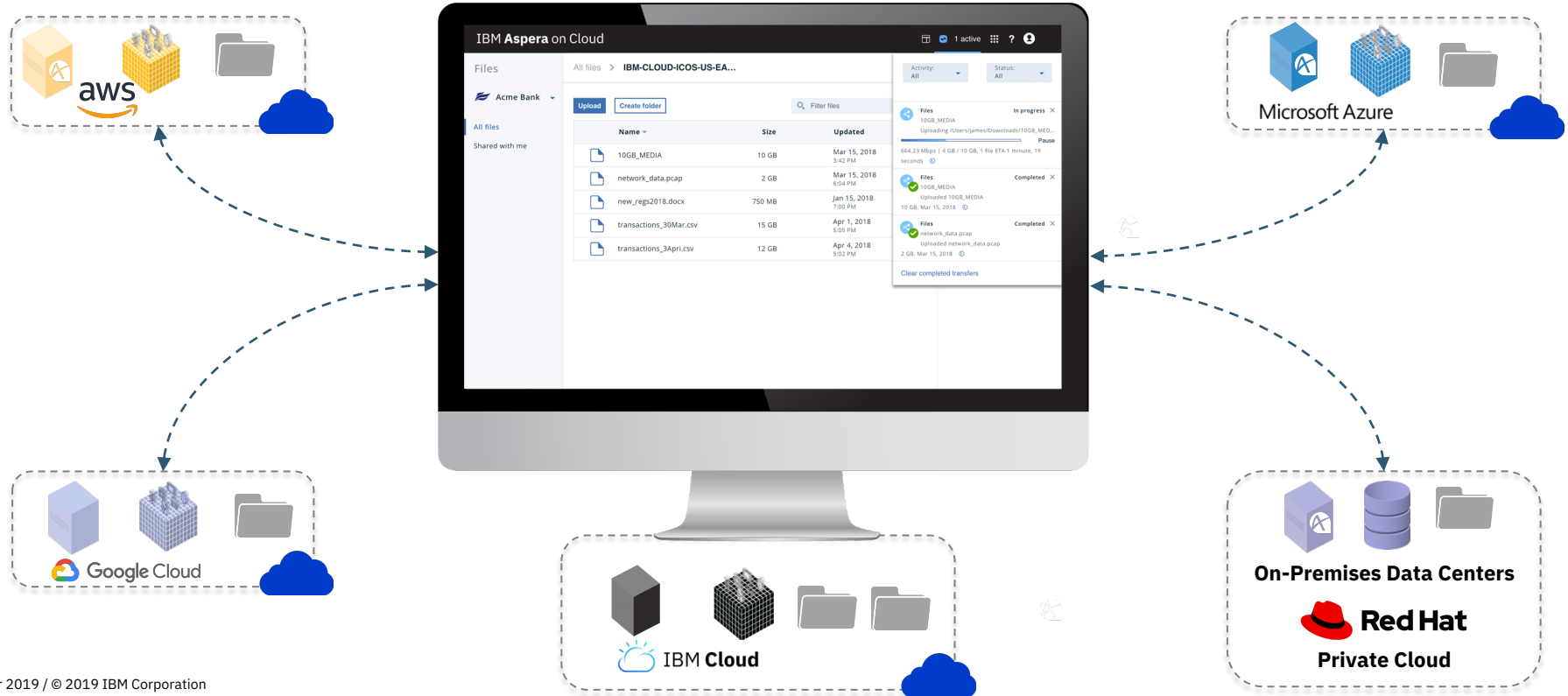
Aspera Streaming for Video

- Enhanced web app for auto-discovery and monitoring of streams and devices
- Early access: New streaming gateway/agent with full bi-directional communication & socket-based protocol

What's New in Aspera on Cloud

IBM Aspera on Cloud

A hosted service that enables organizations to securely and reliably move large files and data sets across on-premises and hybrid cloud environments at unrivaled speed



New Automation app

New Aspera on Cloud app to automate workflows and file movement between transfer endpoints: Nodes, Shared Folders, Shared Inboxes

- Initiate transfers via triggers
 - API
 - File arrival
 - Package arrival
 - Per a schedule
 - Manually
- Integrate via API calls
- Integration with Aspera Orchestrator
- Email notifications
- Dashboard visibility of live workflows

Workflow designer

The screenshot displays the IBM Aspera on Cloud Workflow Designer interface. The main window shows a workflow named "Daily Archive" with the following steps: Trigger (person icon), Notify (envelope icon), Call an API (API icon), Transfer (double arrows icon), and another Notify (envelope icon). A secondary "Notify" step is connected to the "Call an API" step. Two pop-up windows are overlaid: "Add new action" and "How would you like to trigger your flow?".

Add new action

- Transfer
Transfers to a folder on a node or a workspace
- Send a package
Send a package to users, groups, or shared inbox
- API Call an API
Add an API action (e.g. call a transcoding API)
- Notify
Notify people through email
- Telestream QC
Apply Telestream QC to a file

How would you like to trigger your flow?

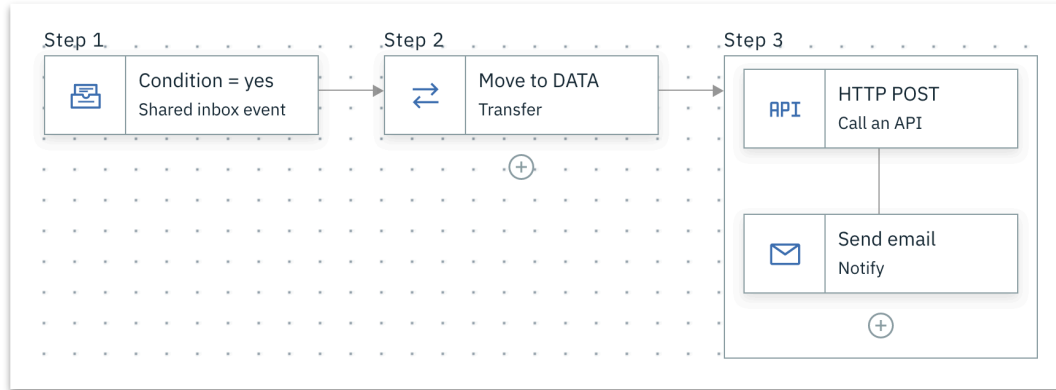
- Manual
From an API or a person
- Time schedule
On scheduled times
- File event
When a new file is added to a folder
- Shared inbox event
When a package arrives in an inbox

Actions

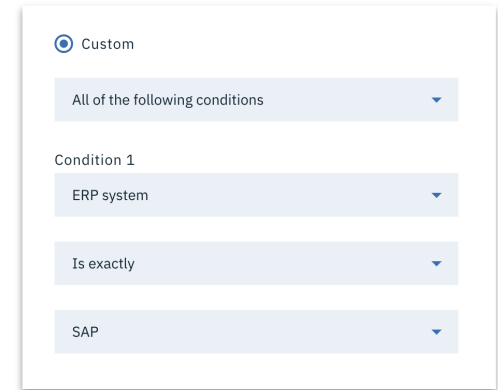
Triggers

Automation app: Workflow Designer

Example



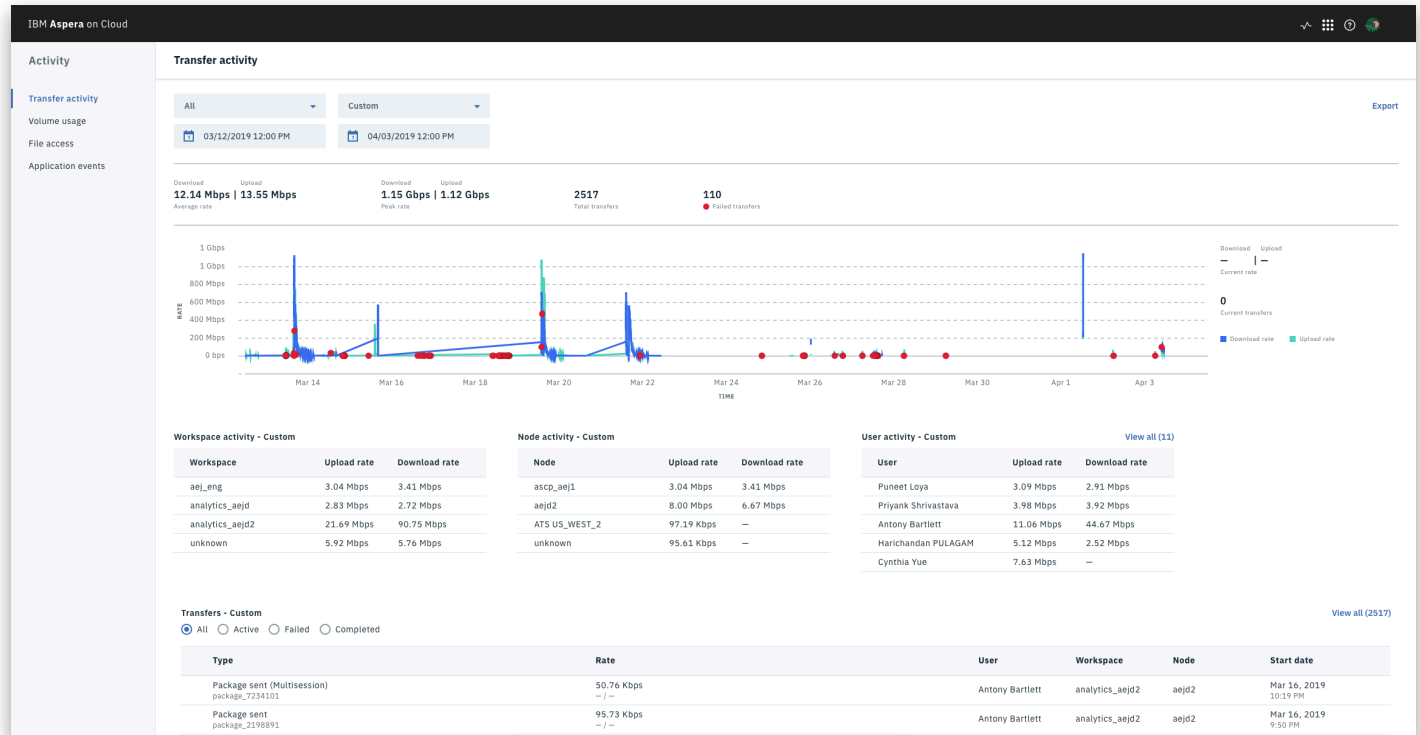
Shared inbox delivery -> Move data ->
API call & email notification



Customized triggers based on
metadata selection

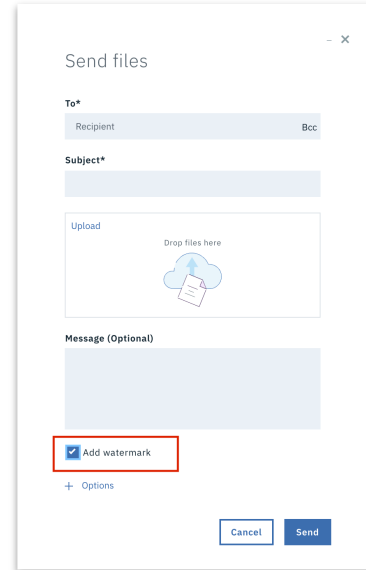
New multi-session monitoring

Activity app can now monitor multi-session transfers

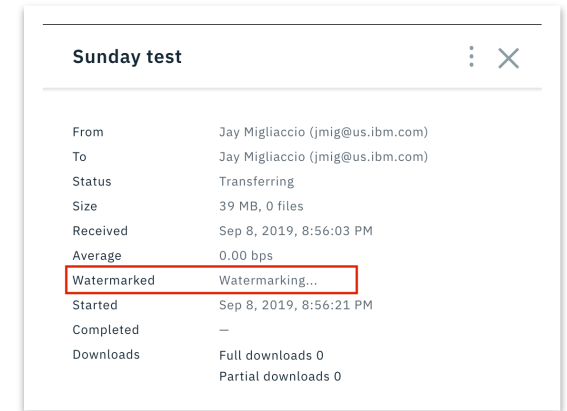


Early Access: Watermarking

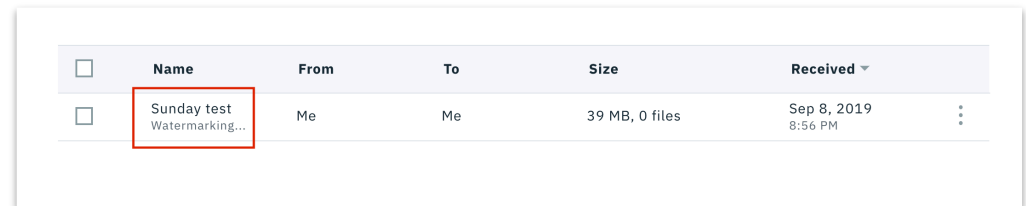
- Aspera on Cloud integration with Irdeto watermarking service
- Aspera on Cloud package delivery has a new option to watermark files
- Package sender has an option to select watermarking
- Package delivery shows status



“Add watermark”



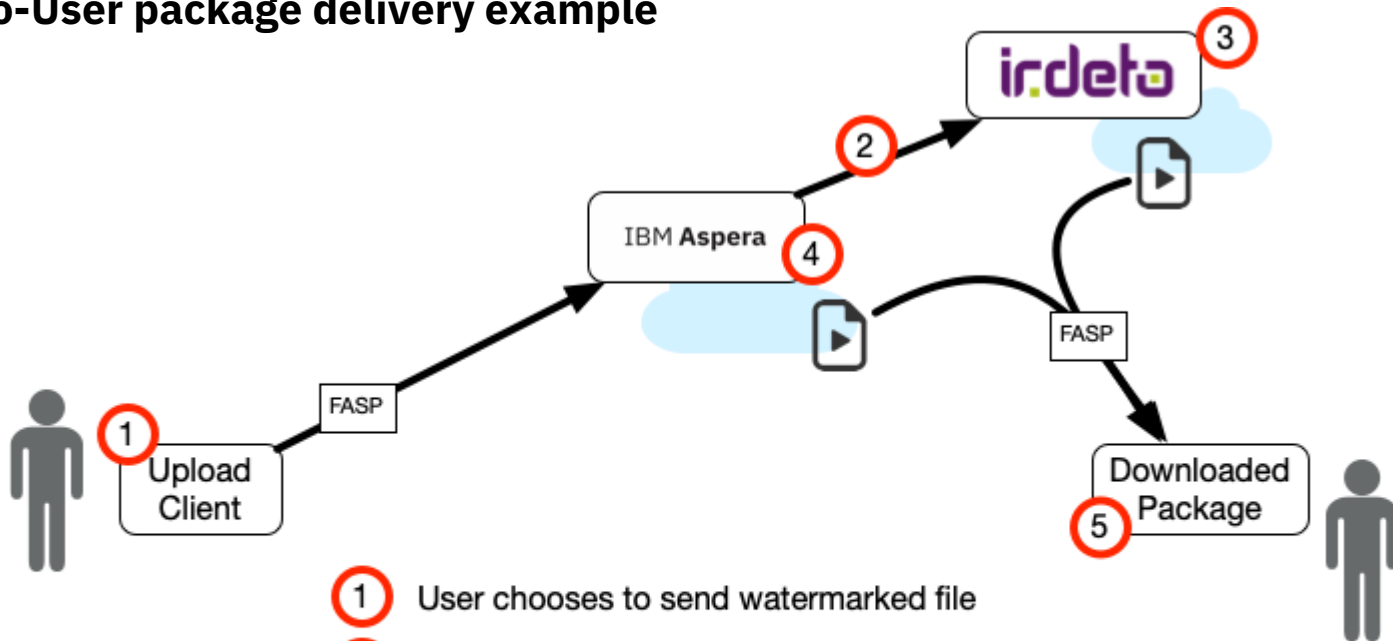
Package watermark details



Watermark status included in Inbox view

Watermarking: How it Works

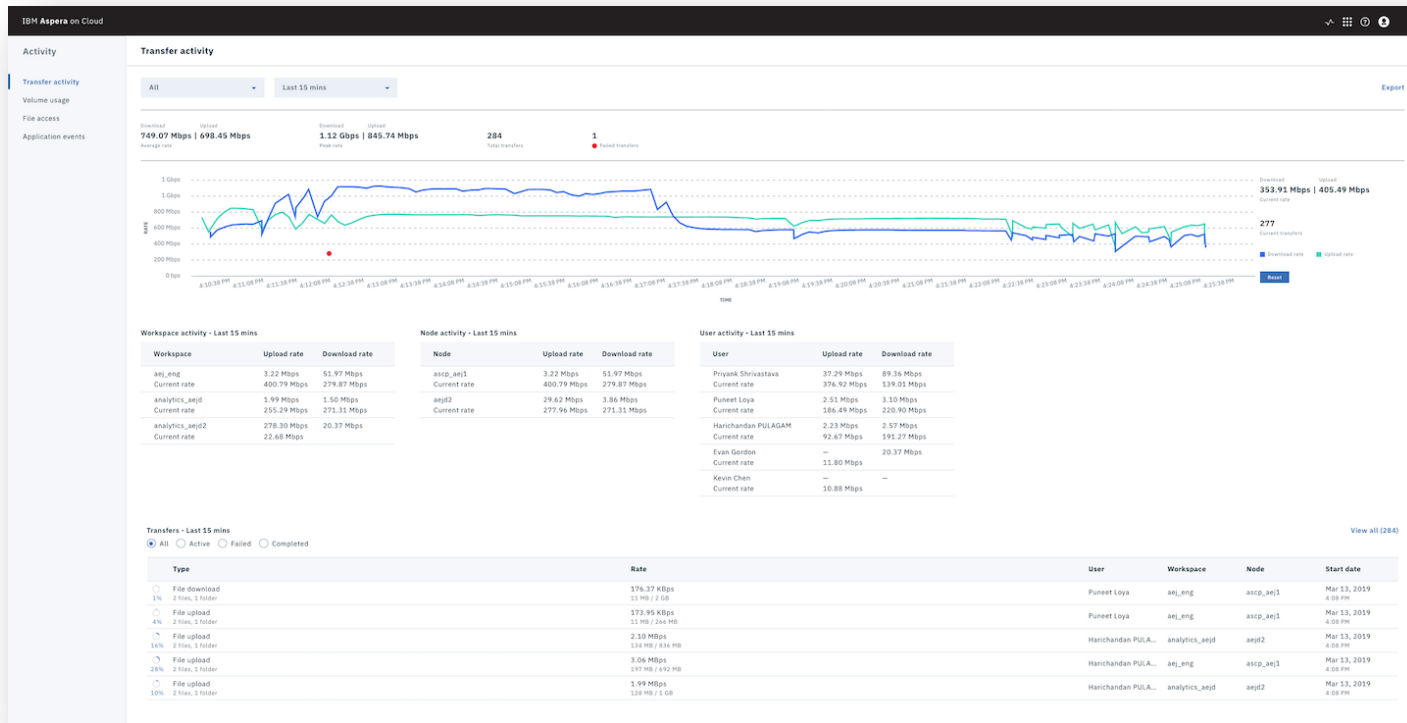
User-to-User package delivery example



- 1** User chooses to send watermarked file
- 2** Aspera notifies Irdeto of new file
- 3** Irdeto creates a variant file in cloud storage
- 4** Aspera uses Irdeto to create watermarked file
- 5** User downloads a uniquely watermarked package

Intended Enhancement: Hybrid Cloud Activity Monitoring

Activity in on-premises nodes can be monitored by the Aspera on Cloud Activity app



What's New in Aspera High-Speed Transfer Server

FASP 3.9

AES-GCM FASP Encryption

- Built-in data authentication (including AAD routines)
- FIPS 140-2 compliance (including the built-in authentication/MAC routines)
- Substantially improved performance with 75% reduction in CPU use

Robust loss-adjusted-queue rate controller

Rapidly corrects for overdrive conditions when the target rate exceeds available network bandwidth, reducing packet loss and increasing transfer performance. Available via configuration settings.

```
AES-CFBC vs AES-GCM
'ascp' Transfer Performance Comparison
1500-byte frames

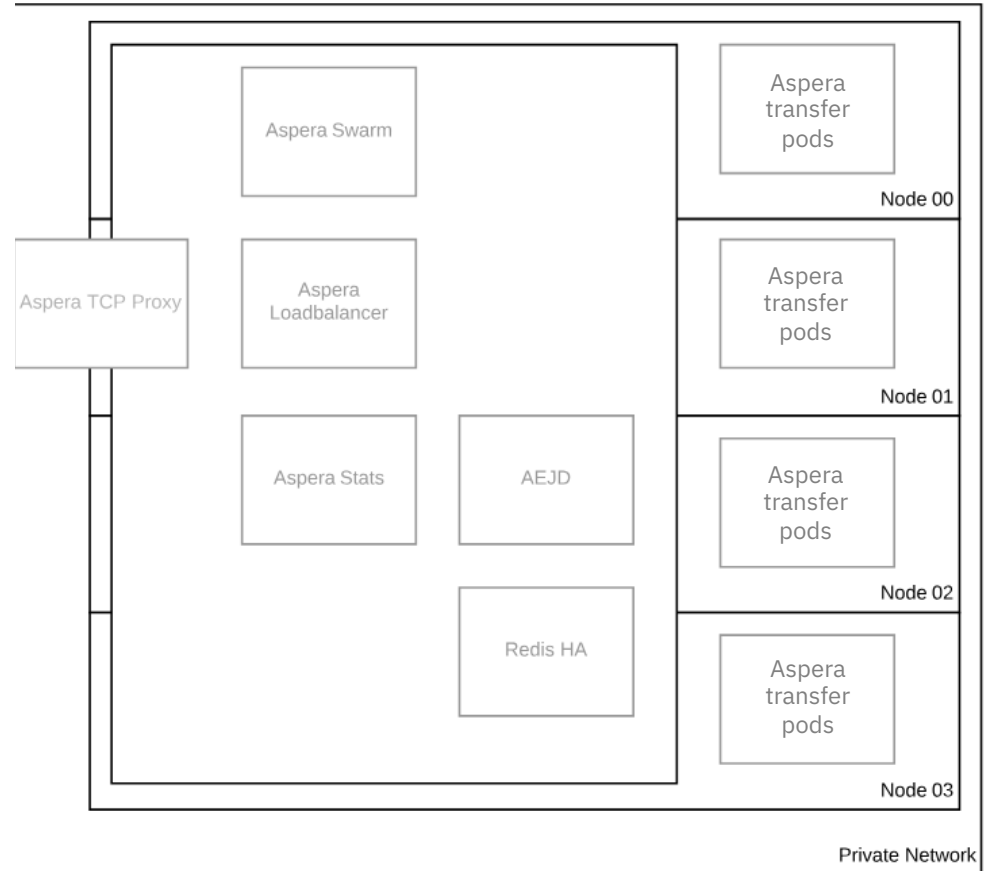
AES-CFBC fasp encryption (legacy):
10gfile 100% 10GB 2.2Gb/s 00:36
Completed: 10485760K bytes transferred in 37 seconds
(2294838K bits/sec), in 1 file.

AES-GCM fasp encryption (ES v3.8):
10gfile 100% 10GB 5.0Gb/s 00:17
Completed: 10485760K bytes transferred in 18 seconds
(4746259K bits/sec), in 1 file.
```

New support for Red Hat OpenShift

Aspera High-Speed Transfer Server software has been optimized to run in a containerized environment

- Easy Helm/Operators-based deployment
- Advanced load balancing capabilities
- Self-healing transfer nodes
- High-availability out of the box



What's New in Aspera Faspex & Console

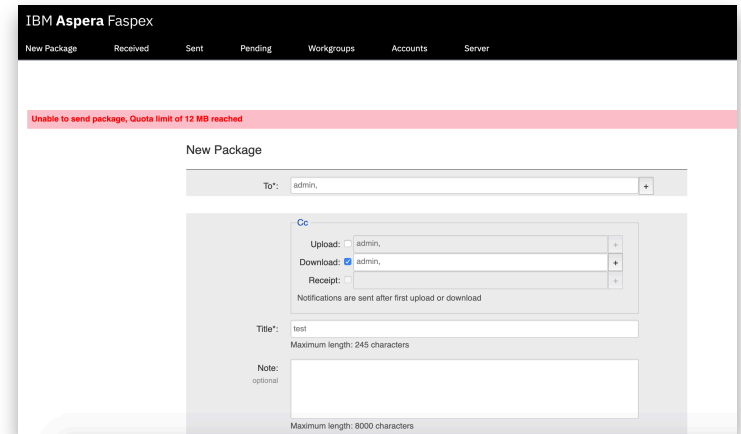
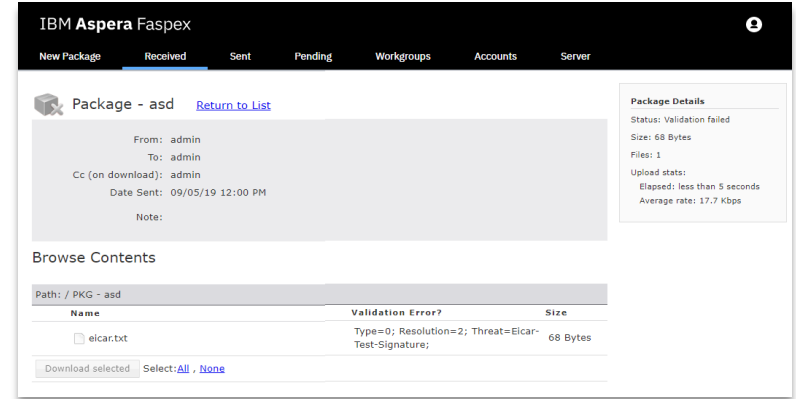
What's New in Aspera Faspex 4.3.0

Improved OTFV Validator

- A new standalone package that can be deployed anywhere
- Load-Balancing
 - Each Validator node can handle multiple HSTS nodes
 - Multiple Validator nodes can be deployed
- New LUA scripts examples (including ICAP)
- New feature to support shared storages (FileWait)
- More robust in failure cases
- Improved web application integration (Faspex, Console)
 - Show validation progress
 - Improve validation status
 - Add email notifications

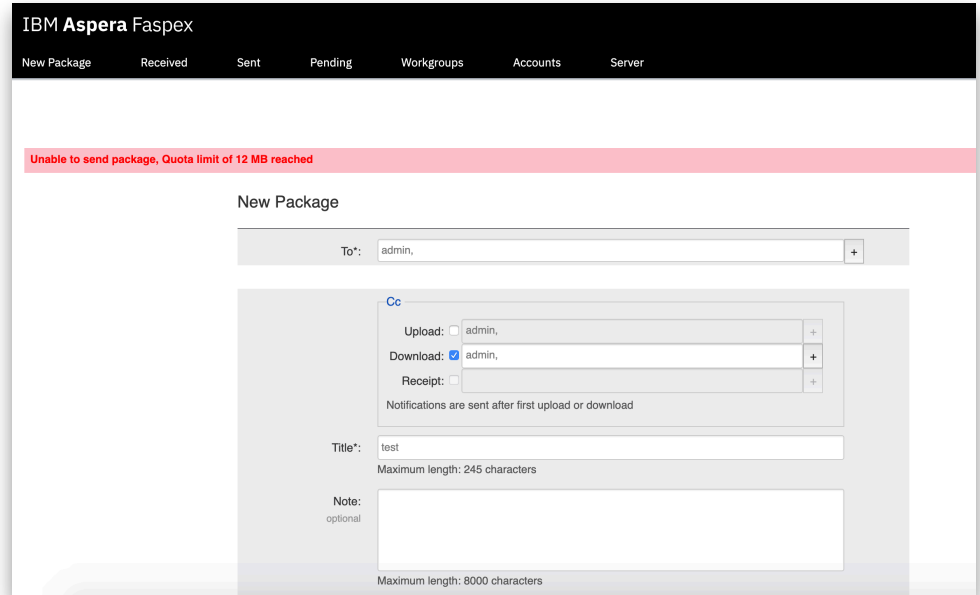
Sender Quotas

- Control data leaks by setting up quotas for untrusted senders
- Configure byte transfer limits per sender in a given rolling hour cycle
- Ability to exempt quota limits if sending to specific trusted recipients
- Recipient domain white list
- Enhanced user experience



Aspera Faspex Sender Quotas

- Additional level of control to prevent data leaks by setting up quotas for untrusted senders
- One sender cannot send more than a configured byte size per rolling hour cycle. For example, an administrator could set sender quotas to 2GB per rolling 24 hours cycle.
- Ability to avoid quota limitation if sending to specific trusted recipients
 - Recipient domain white list



Intended Enhancements in Aspera Faspex

New clientless download/upload with HTTP Gateway 2.0

- Enables an alternative download/upload option if using Aspera Connect is not possible (e.g., highly secure or locked down environments)
- Utilizes the browsers native download manager
- Downloads collection of files as a zip preserving their directory structure
- Supports increased file sizes & quantities transferred

Multi-language support

- Ability to change the user interface language at a user level

Enhanced performance

- UI & API performance enhancements with faster loading times

Ability to obfuscate file names

- Secure sensitive information stored in a file name by obfuscating the file names at the time of upload

IBM Aspera Faspex

New Package Received Sent Pending Workgroups Accounts Server

Preferences

- Change Password
- Edit Contacts
- Edit Distribution Lists

Preferences

Locales

Locale: fr de es en

Email settings

E-mail: philip.baumann@ibm.com

Upload notifications: aspera, +
Email these addresses with the result of the upload

Download notifications: aspera, +
Email these addresses when each recipient first downloads a package

Email me when I receive a package:

Email me when I download a package:

Email me if validation fails on sent packages:

Email me if validation fails on received packages:

Include me in workgroup notifications for packages I send:

Misc

Max rows per page: 12

Update preferences

Intended Enhancements in Aspera Console

Enhanced Watch Folder Capabilities

- Ability to stop, start, pause, and resume a watch folder
- Support both PUSH and PULL modes

Console communication to Host via Proxy

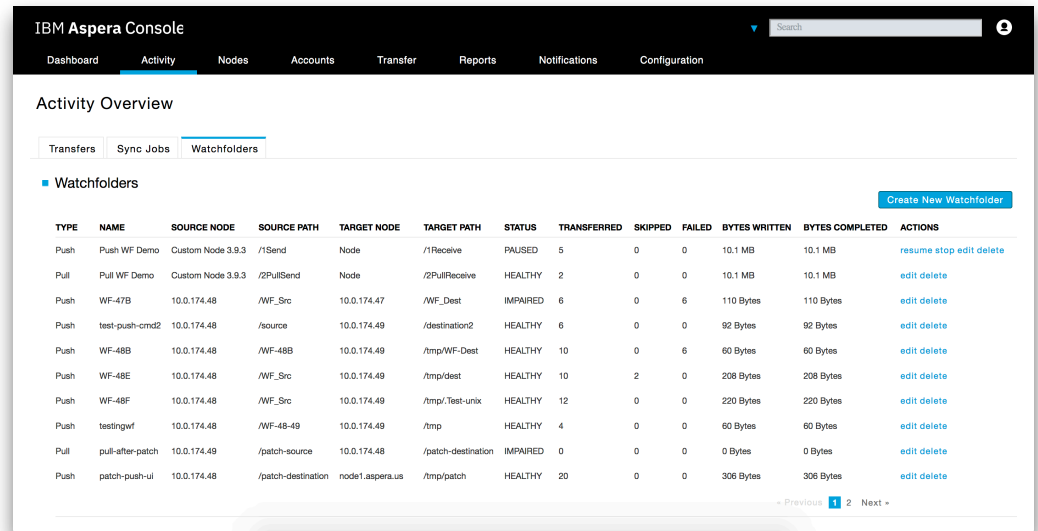
- Proxy communication for endpoint configuration

Console dependency on Adobe Flash

- Remove Flash dependency in Console

Tighter integration with Aspera on Cloud

- Show detailed metadata in Console dashboard for Aspera on Cloud transfers



The screenshot shows the IBM Aspera Console interface. The top navigation bar includes 'Dashboard', 'Activity', 'Nodes', 'Accounts', 'Transfer', 'Reports', 'Notifications', and 'Configuration'. The 'Activity' tab is selected, and the 'Watchfolders' sub-tab is active. A table lists various watchfolder activities with columns for Type, Name, Source Node, Source Path, Target Node, Target Path, Status, Transferred, Skipped, Failed, Bytes Written, Bytes Completed, and Actions. A 'Create New Watchfolder' button is visible in the top right of the table area.

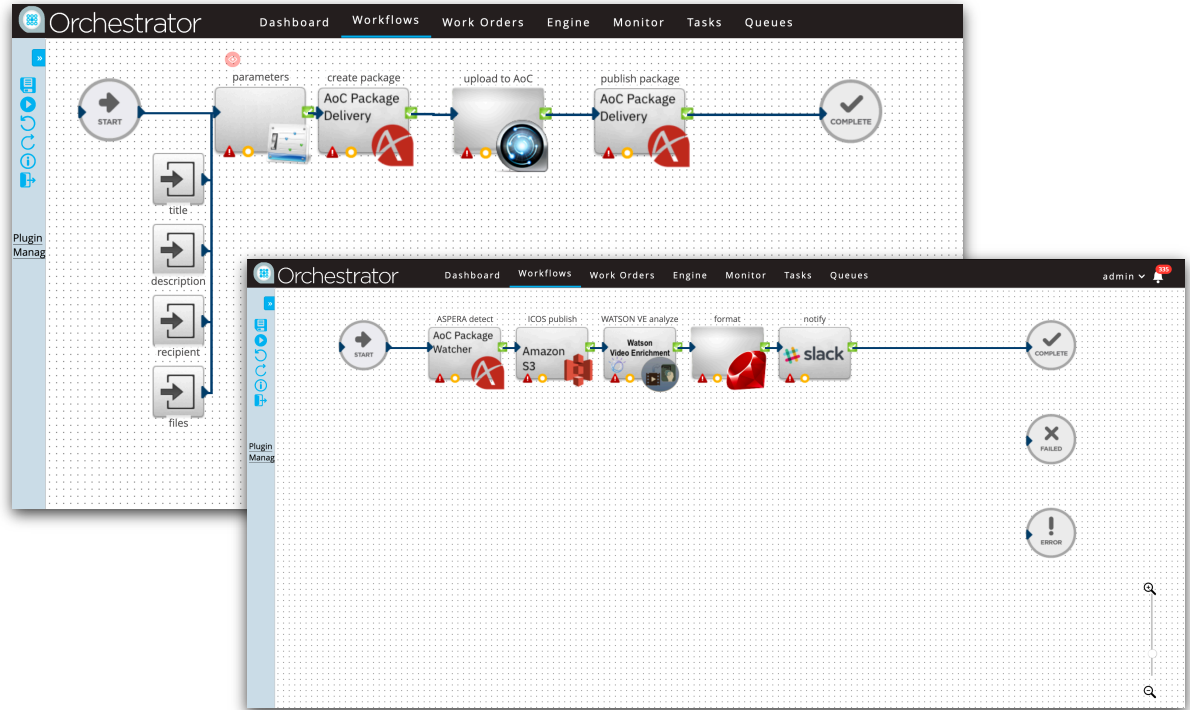
TYPE	NAME	SOURCE NODE	SOURCE PATH	TARGET NODE	TARGET PATH	STATUS	TRANSFERRED	SKIPPED	FAILED	BYTES WRITTEN	BYTES COMPLETED	ACTIONS
Push	Push WF Demo	Custom Node 3.9.3	/1Send	Node	/1Receive	PAUSED	5	0	0	10.1 MB	10.1 MB	resume stop edit delete
Pull	Pull WF Demo	Custom Node 3.9.3	/2PullSend	Node	/2PullReceive	HEALTHY	2	0	0	10.1 MB	10.1 MB	edit delete
Push	WF-47B	10.0.174.48	/WF_Src	10.0.174.47	/WF_Dest	IMPAIRED	6	0	6	110 Bytes	110 Bytes	edit delete
Push	test-push-cmd2	10.0.174.48	/source	10.0.174.49	/destination2	HEALTHY	6	0	0	92 Bytes	92 Bytes	edit delete
Push	WF-48B	10.0.174.48	/WF-48B	10.0.174.49	/tmp/WF-Dest	HEALTHY	10	0	6	60 Bytes	60 Bytes	edit delete
Push	WF-48E	10.0.174.48	/WF_Src	10.0.174.49	/tmp/dest	HEALTHY	10	2	0	208 Bytes	208 Bytes	edit delete
Push	WF-48F	10.0.174.48	/WF_Src	10.0.174.49	/tmp/Test-unix	HEALTHY	12	0	0	220 Bytes	220 Bytes	edit delete
Push	testingwf	10.0.174.48	/WF-48-49	10.0.174.49	/tmp	HEALTHY	4	0	0	60 Bytes	60 Bytes	edit delete
Pull	pull-after-patch	10.0.174.49	/patch-source	10.0.174.48	/patch-destination	IMPAIRED	0	0	0	0 Bytes	0 Bytes	edit delete
Push	patch-push-ui	10.0.174.48	/patch-destination	node1.aspera.us	/tmp/patch	HEALTHY	20	0	0	306 Bytes	306 Bytes	edit delete

What's New in Aspera Orchestrator

What's New in Orchestrator

Automation of hybrid cloud workflows

- New ability to integrate Aspera Orchestrator and Aspera on Cloud workflows
- Allows for separation of processing between the cloud and on-premises



What's New in Orchestrator

New plug-ins

- EditShare Qscan
- Dolby VM 600 Audio Analysis
- Amazon SimpleDB
- Amazon SQS Trigger mode
- Amazon Dynamo DB
- Amazon SNS
- Screen Systems MediaMate
- Frame.io
- File Archiving Operation on Remote Nodes

Updated plug-ins

- VantageTranscoding to correctly report progress
- FaspTransfer enhancements (Aspera on Cloud, tags, etc)
- LoadManager makes allocation policy configurable
- AMQPTrigger flexible routing key support
- ScheduleTrigger correctly handles time zone

Early access plug-ins in Orchestrator

Media and entertainment focused



- Watson Language Translator - Translate text across multiple languages



- AWS Transcribe - Convert speech to text

General IT



- IBM Cloud - Interact with the Softlayer API



- Jira - Add tickets to a Jira project



- Kafka - Send and receive messages on an Apache Kafka system

Intended Enhancements in Orchestrator

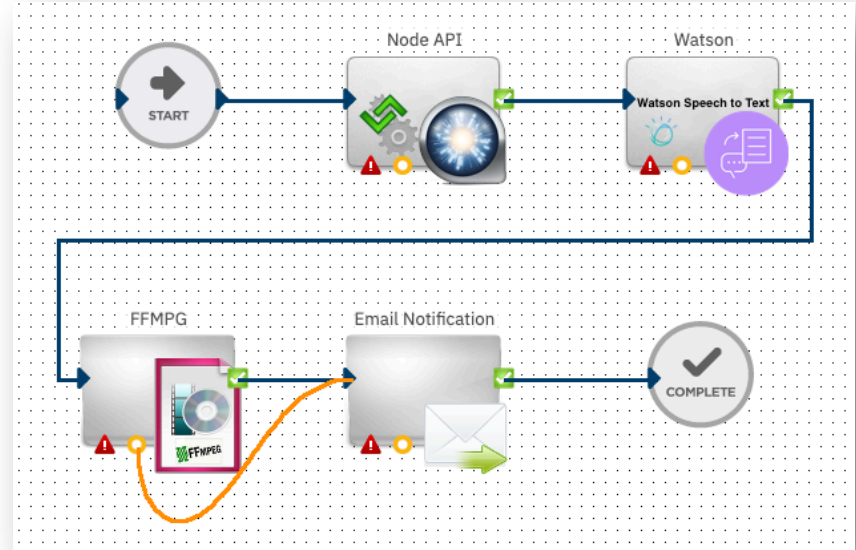
Workflow Validation using AI

Use artificial intelligence to analyze and determine if a workflow is well designed. Workflows can often be misconfigured, which is a hard problem for users to identify

Orchestrator will harness AI to alert and guide users in such situations

Workflow Import API

- Complex workflows can now be imported with a specific configuration into an Orchestrator system
- Allows for workflows to be easily synchronized across multiple Orchestrator nodes (e.g. test machine and production machine)



A simple, but misconfigured, workflow

Intended Enhancements in Orchestrator

Modernization of user interface including new design

IBM Aspera Orchestrator

Dashboard Workflows Work Orders **Engine** Monitors Tasks Queues Users

Orchestrator Processes

Force maintenance Stop management Start Stop Kill

Process	Execution Mode	Process PID	CPU, Mem	Stop	Kill
Engine HB: 1(0.01)		75058	0.1%, 1.3%	Stop	Kill
Mongrel #3000		75063	10.3%, 1.7%	Stop	Kill
Mongrel #3001		75065	0.0%, 1.4%	Stop	Kill
Mongrel #3002		75067	0.0%, 1.4%	Stop	Kill
Monitor		75061	0.0%, 1.1%	Stop	Kill
Worker #0	asynchronous	75072	1.0%, 1.2%	Stop	Kill
Worker #1	asynchronous	75077	0.9%, 1.2%	Stop	Kill
Worker #2	normal	75082	0.2%, 1.2%	Stop	Kill
Worker #3	normal	75087	0.9%, 1.2%	Stop	Kill
Worker #4	normal	75093	0.9%, 1.2%	Stop	Kill
Worker #5	normal	75100	0.9%, 1.2%	Stop	Kill

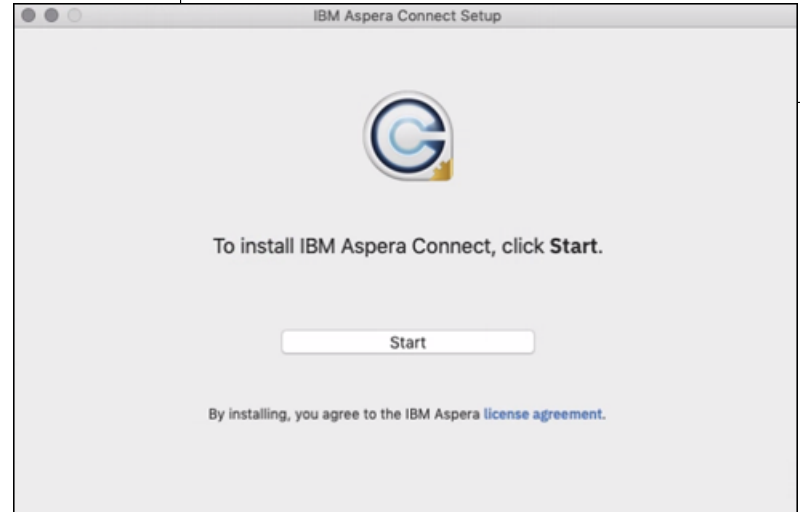
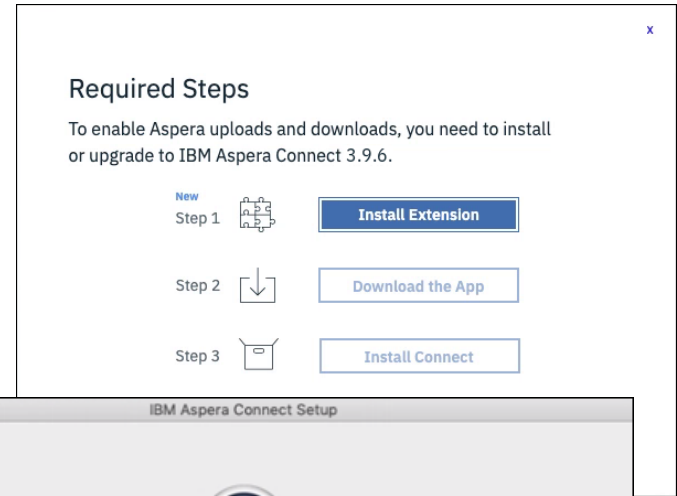
Last updated Thu Sep 05 17:33:25 PDT 2019

What's New in Aspera clients

What's New in Aspera Connect 3.9

Usability and UX Updates

- The use of browser extensions to facilitate the app's communication with the web browser improves the reliability and integration of launching Connect.
- Easier installation and upgrade procedures with the guided assistance dialog and the new quick installer that requires little interaction
- Benefit users of on-premise servers and Aspera on Cloud



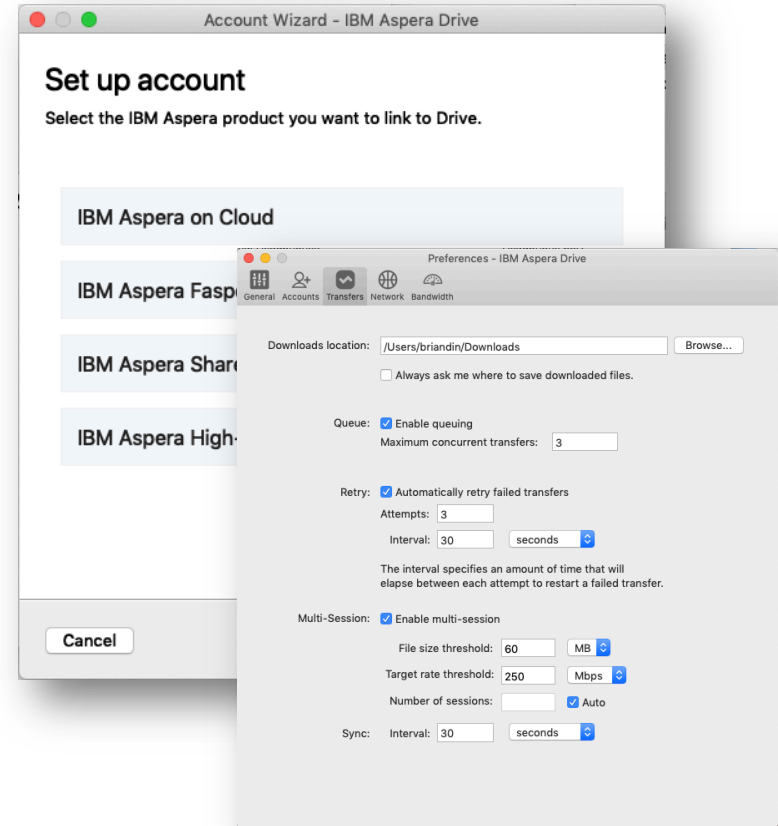
Intended Enhancements in Aspera Drive

Multi-session Transfer

Maximize transfer throughput using multi-session transfers to Aspera on-premises servers and Aspera on Cloud

UX Update for Account Login

Improved set up account wizard to streamline linking accounts from Aspera on Cloud, Faspex, Shares, and High-Speed Transfer Server



What's New in Aspera Streaming for Video

What's New in Aspera Streaming for Video

Stream Director

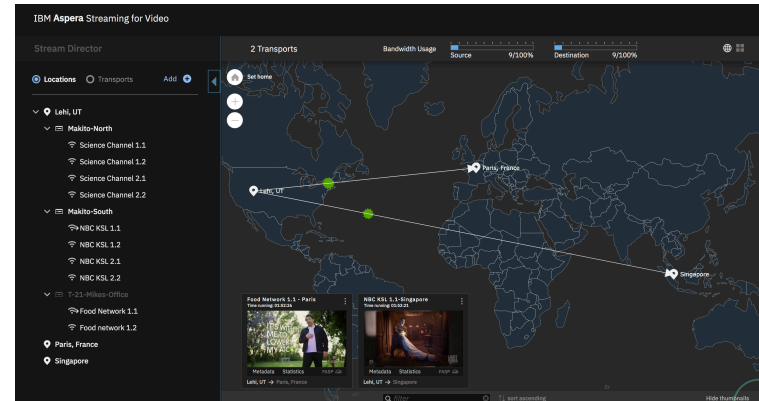
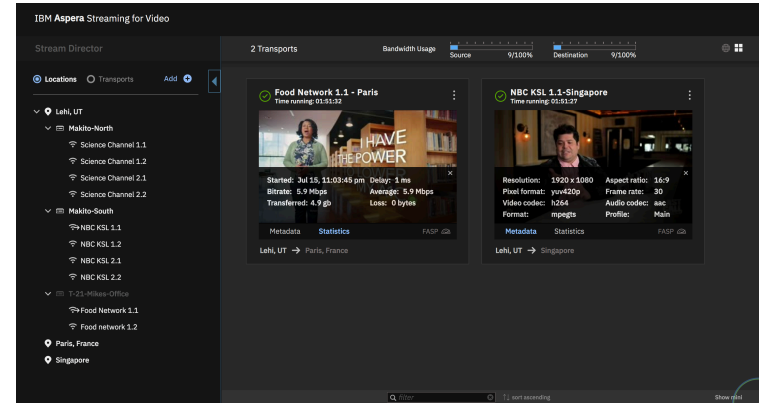
An optional Aspera Streaming for Video feature that allows for simplified management, monitoring and distribution of streams via a simple and intuitive UI.

Key Benefits

- Nearly eliminates stream setup time
- Lower deployment effort and operational costs
- Increased control & security of streaming workflows
- Valuable visibility of location, device and stream details to operations and production staff

Key New Features

- Simple fan-out configuration and monitoring
- Choose stream and connection direction “on the fly”
- Dynamic tag and metadata support
- Enhanced filtering and sorting
- “Mini” view to show more streams concurrently



Děkujeme

Petra Novakova

IBM Aspera Sales Leader Europe

novakova@fr.ibm.com

+33 6 29 46 02 02

Andrea Di Muzio

IBM Aspera Professional Service Practice Manager

IBM Aspera Automation Offering Manager

andrea.dimuzio@fr.ibm.com

+33 6 14 52 35 43