

# PIXMA MG4170

Photo All-in-One

**Canon**

Delighting You Always

## SIMPLY ADVANCED

- FUN FILTER EFFECT
- PIXMA CLOUD LINK
- ENHANCED FULL HD MOVIE PRINT
- FASTFRONT
- AUTO DUPLEX PRINTING
- NEW FINE™ CARTRIDGES



# THE PIXMA BLACK SERIES

# THE PIXMA BLACK SERIES

THE PIXMA BLACK SERIES

## ADVANCED PERFORMANCE, SIMPLE OPERATION

With features like Auto Duplex printing and Solution Menu EX, the PIXMA MG4170 makes advanced performance effortless. You can print photos wirelessly from selected mobile devices, or print directly from memory cards simply by viewing and choosing images on the 2.4-inch color LCD display. What's more, now you can transform ordinary photos and HD movie stills into works of art with Fun Filter Effect and Full HD Movie Print. Now FastFront enables you to replace cartridges and load paper easily. Advanced performance is simple – with the PIXMA MG4170.

### Before You Buy, Demand To Know The True Speed Of That Inkjet Printer

You cannot accurately compare the speed of inkjet printers when there are different test methods. Unless the universal ISO Print/Copy Speed Measurement standards are used, it's impossible to know which printer is faster: one that prints 10 images per minute (ipm) or one that prints 30 pages per minute (ppm). Canon has adopted the universal ISO standards for inkjet printers to ensure that you always get the performance you expect right out of the box. Demand the ISO standard – it's the only way to know the real speed of your inkjet printer.

2 pl  
Technology

4800 dpi  
Maximum

10x15cm (4x6")  
borderless  
44 approx.  
sec.

FINE  
Full-photolithography Inkjet  
Nozzle Engineering

ChromaLife100

Document  
Printing  
9.9 ipm  
Mono  
5.7 ipm  
Color  
Measured by ISO / IEC 24734 Standard

FCOT  
(First Copy Out Time)  
20 sec.  
Color  
Measured by  
ISO / IEC 29183 Standard

FINE Cartridge



### Full HD Movie Print

Print your favorite moment. Catch the motion and tell the story.



### Fun Filter Effect

Just a few clicks to add artistic image effects.



Original



Fish-Eye Effect

### PIXMA Cloud Link

Print photos from your online album or useful templates without using a PC.



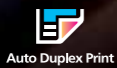
### 2.4-inch Color LCD Display

A better view with the large display screen.



### Auto Duplex Printing

For saving resources.



### Mobile Printing (Wi-Fi)

Enjoy wireless photo printing from iPhone/iPad/Android™ devices.



Mobile Printing



### FastFront

Makes replacing ink cartridges and loading paper easy.



### Quick Operation

Quick and comfortable photo printing.



### Easy-WebPrint Ex

Lets you clip, arrange and print web page contents.



### High-quality & High-speed

2pl, 4800dpi, FINE™ Cartridge and ISO Standard speed.



### Quiet Mode

Offers near silent operation with straightforward settings.

### Canon Creative Park Premium

Download and print exclusive premium content.

\* Only available when using Canon genuine inks for all colors.



# FUN FILTER EFFECT



NEW!

Create a more artistic impression or add some fun to your ordinary photo through Fun Filter Effect. This software is conveniently accessed via Solution Menu EX or Easy-PhotoPrint EX. Simply select an image, choose the desired effect and follow the easy steps.

### Fish-Eye

A fish-eye lens captures extremely wide images, giving them a fun, distorted appearance. To create the same look, just select the center of the effect and the degree of distortion.

Before



After



### Miniature

Softens the edges of your images, making subjects appear to be miniatures. Select the width of the focus area to control the degree of miniaturization.



### Toy Camera

Creates a stylish and increasingly popular effect by making your images appear as if they were captured with a vintage or "toy" camera.



### Soft Focus

Decreases the sharpness of your images to create a dreamy, artistic feel. You can control the degree of softness.



### Blur Background

Makes the subject stand out by giving the background a soft, pleasing blur.



# PIXMA CLOUD LINK

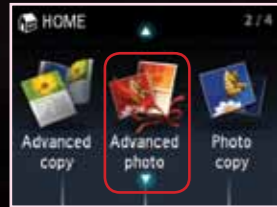


With PIXMA Cloud Link, you can access and print photos and stationery stored online. You don't even need a computer!

## Online Album Photo Print

Print photos from Picasa™ Web Albums. No PC is required; simply view and select images on the printer and print.

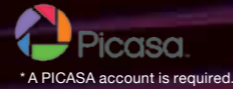
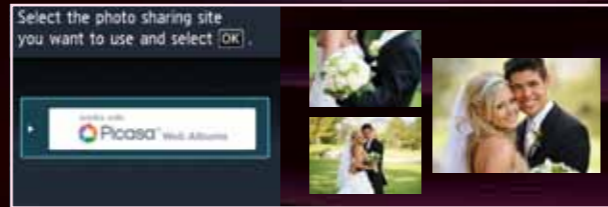
Select "Advanced photo"



Select "Online Album print"



Select photo sharing site



Select album and photos to print



## Web Template Print

Print attractive templates directly from your PIXMA MG4170. Templates are regularly updated and include stationery, envelopes, memos and calendars.

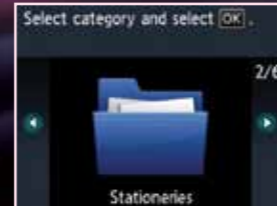
Select "Special print"



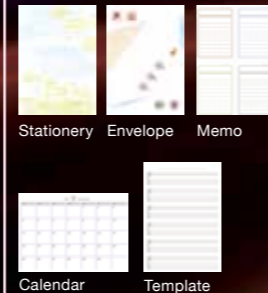
Select "Web template print"



Select category



Canon Server  
Templates are updated regularly



Select template to print



# ENHANCED FULL HD MOVIE PRINT



Extract individual frames from movies taken with your Canon digital camera and print them as beautiful still photographs. For optimal image quality, you can even enhance the resolution and reduce noise before printing. Now you can do even more:



\*Only for ".mov" files created by Canon digital cameras. Requires Canon ZoomBrowser EX 6.5 or later, or Canon ImageBrowser 6.5 or later.



## Merge Frames **NEW!**

Combine multiple frames of an action sequence to create an extraordinary image showing the natural flow of movement.



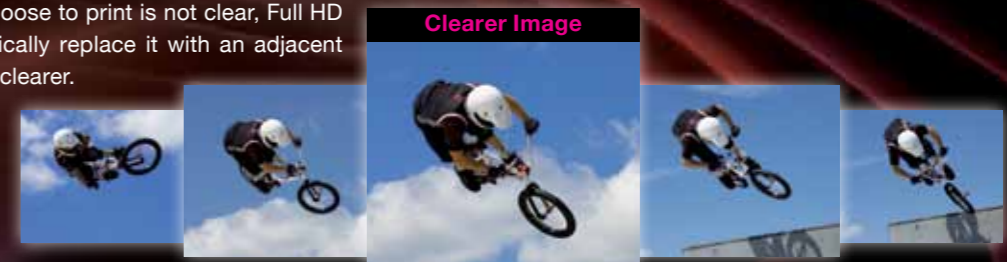
## Layout **NEW!**

Create a layout with multiple frames from a movie clip. You can choose the paper size, layout orientation, frame direction and automatically adjust the cropping area of each frame.



## Clearer Images **NEW!**

If the movie frame you choose to print is not clear, Full HD Movie Print can automatically replace it with an adjacent frame that is sharper and clearer.



### New FINE™ Cartridge

The new FINE™ cartridge improves color reproduction in red areas for more brilliant color images. It also enhances print speed while maintaining image quality.



Original

New FINE™ Cartridge



### Frame Erase

Saves black ink by removing unsightly black borders that often appear on copies made from thick originals.



Without Frame Erase

With Frame Erase

### Auto Scan Mode

The document type is recognized and scan settings are automatically made – including file format settings and image categorization – so you can scan at the touch of a button.



### Reserve Copy

Begin making another copy as you wait for the previous one to be completed. Put the next document on the platen glass, press the start key and the next job will be placed in the copy queue.

# MP NAVIGATOR EX

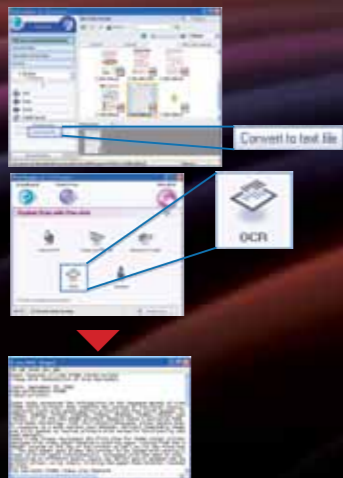
### Image Categories

Organizes scanned images into categories (works with Auto Scan Mode).



### OCR Text Data Conversion

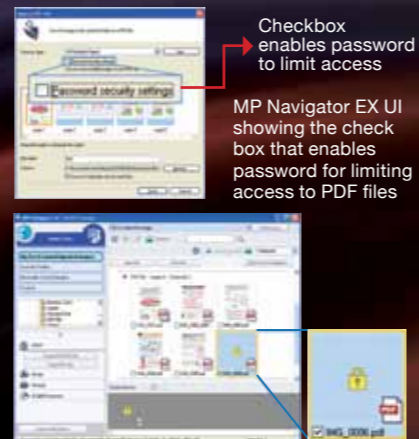
Extract text from a scanned image to create a .TXT text file, and use appropriate software to edit, copy, save or email.



Copy/Save Microsoft Notepad

### Added PDF Security

Limit access to or restrict the printing of PDF files by giving them passwords; separate passwords can be created for a single file to give varied access.



MP Navigator EX UI showing PDF files with passwords that limit access

# CONVENIENT CONNECTIONS

### Wireless Network

Setting up a secure wireless network is easy with Wi-Fi Protected Setup (WPS) and Windows Connect Now (WCN).

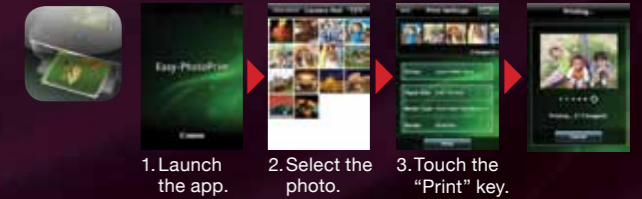


### Easy Printing From Mobile Devices

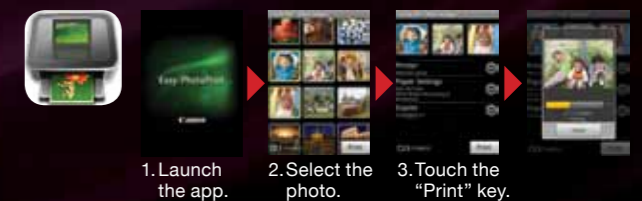
Print photos wirelessly from your iPhone, iPad, iPod Touch or Android™ devices in three easy steps. You can also “snap & print” a photo immediately after taking it.



#### Canon iEPP (For iPhone)



#### Canon EPP (For Android)\*



\* Subject to Android device compatibility

### USB 2.0 Hi-Speed

Connection is quick and convenient with the USB 2.0 Hi-Speed port. It also ensures fast, smooth data transfer.



### Card Direct

Print photos directly from most commonly used memory cards.



**FastFront**

Replacing ink cartridges and loading paper from the front is faster and easier with FastFront.



**Auto Photo Fix II**

Images are analyzed based on the presence of faces, type of scene and lighting conditions. Precision adjustments are then made to skin tones, brightness and color cast.



Original



Corrected color cast

**Solution Menu EX**

This convenient desktop menu gives you instant access to a variety of printing, scanning and web-based solutions: print HD movie frames, visit Creative Park Premium, set the printer to Quiet Mode or use Fun Filter Effect.



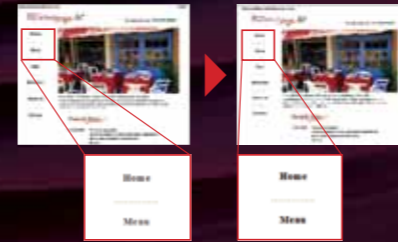
# EASY-WEBPRINT EX



Clip, arrange, edit, resize and print web pages easily.

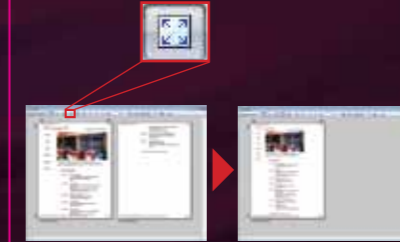
**Improved Legibility**

Enhance readability by changing gray text to black or increasing font size.



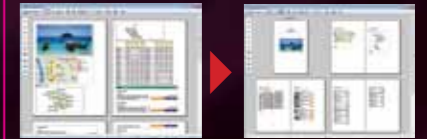
**Fit-To-Page**

With a click, reduce or enlarge content so it fits on one page.



**Booklet Print**

Consolidate clipped web content in an A5-sized booklet, printed on both sides.



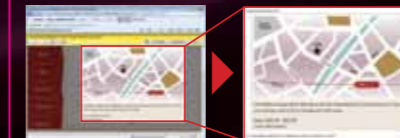
**Clip & Merge**

Clip, edit and resize web material; you can insert images stored on your PC before printing.



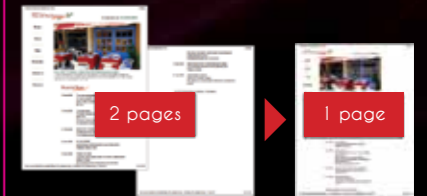
**Auto Clip**

With a click, clip the main part of the web page for printing.



**Save Paper**

Reduce Size/Fit to Page and Save to PDF options lower paper use.



# EASY-PHOTOPRINT EX

It's the fun and easy way to get creative! Print photo albums and calendars with great-looking layouts, photo stickers and much more. Easy-PhotoPrint EX also gives you quick and convenient access to other creative features – including Fun Filter Effect – for even more creative fun.

**Import Photos Directly From Flickr®**

Easy-PhotoPrint EX gives you access to hundreds of thousands of high-quality Flickr® images. You'll have endless fun decorating photo albums, calendars, travel journals or other creative projects.\*



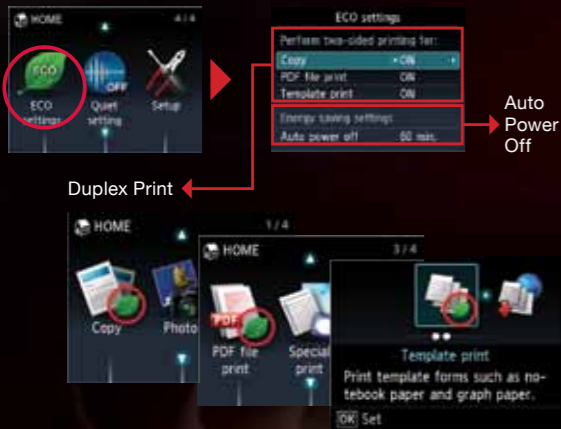
\* It is unlawful to reproduce or edit the copyrighted work of another person without permission from the copyright holder, except for personal use, use within the home, or other use within the limited scope as defined by the copyright. Additionally, reproducing or editing photographs of people may infringe on portrait rights.

# A BETTER ENVIRONMENT

To reduce CO<sub>2</sub> emissions, PIXMA printers conform to the EU RoHS directive and the international Energy Star Program. In addition, the PIXMA MG4170 features a number of innovations to help create a better environment.

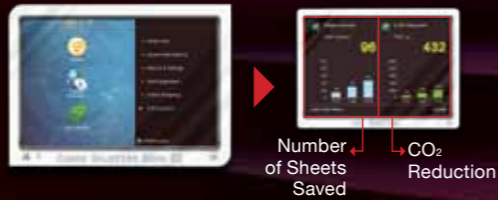
## ECO Mode **NEW!**

Easy access to settings for Auto Duplex printing – including PDF files and templates – to save resources. Reduce energy use by setting the printer to shut itself off automatically after a selected interval of inactivity.



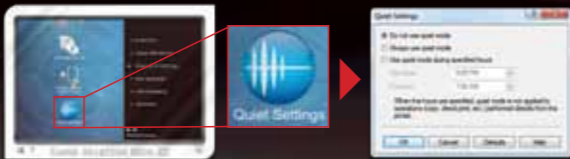
## ECO Information **NEW!**

Know the exact amount of paper you've saved and how much you've reduced CO<sub>2</sub> emissions by using Auto Duplex Mode.



## Quiet Mode **NEW!**

Minimize operating noise with Quiet Mode, which is easily accessible via the Home Screen or Solution Menu EX.



## Photo Printing



**PT-101 Photo Paper Pro Platinum (Super High Gloss)**

- 300g/m<sup>2</sup>
- 4x6", 8x10", A4



**PP-201 Photo Paper Plus Glossy II**

- 260g/m<sup>2</sup>
- 4x6", A4



**GP-501 Glossy Photo Paper**

- 170g/m<sup>2</sup>
- 4x6", A4



**SG-201 Photo Paper Plus Semi-Gloss**

- 270g/m<sup>2</sup>
- 4x6", 8x10", A4

## Special Projects



**MP-101 Matte Photo Paper**

- 170g/m<sup>2</sup>
- 4x6", A4



**PS-101 Photo Stickers**

- 190g/m<sup>2</sup>
- Stickers (5 sheets/pack) (16 photo stickers/sheet)

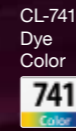
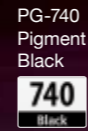
## Business Printing



**HR-101N High Resolution Paper**

- 110g/m<sup>2</sup>
- A4

## Ink Cartridges



**High Yield PG-740XL Pigment Black**

Optional

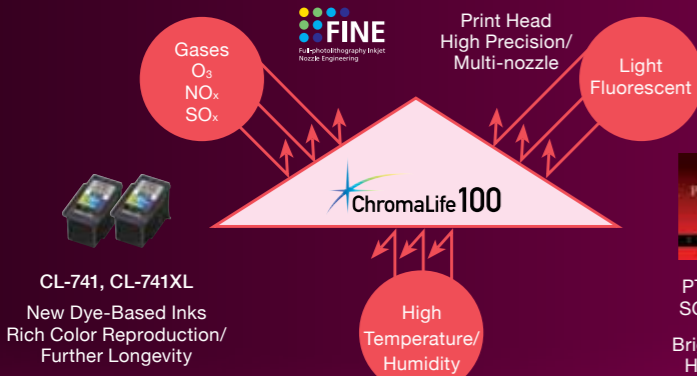


**High Yield CL-741XL Dye Color**

Optional

# ChromaLife100\*

Using Canon's dye-based inks and genuine photo papers, prints can last up to 100 years under proper storage conditions. Image quality is also greatly enhanced.



Gas Fastness Approx. **10 years**



No noticeable color change

# CREATIVE PARK PREMIUM

EXCLUSIVE ACCESS!

As the owner of a PIXMA MG4170, you have privileged access to Creative Park Premium. This is an elite, online service that allows you to download a wide range of professional photos and illustrations from world-renowned artists – premium content that is not available at Canon Creative Park. Use these **FREE** downloads to create extraordinary prints, posters, calendars, greeting cards and much more. This exclusive site can be accessed through Solution Menu EX.



NOTE: CREATIVE PARK PREMIUM is a premium content service available exclusively to users only when all of the colors of genuine Canon inks are installed.

# CREATIVE PARK

Canon Creative Park – Paper Was Never So Much Fun!

Download **FREE** templates to create personalized gifts, cards, 3D paper art, calendars and scrapbooking materials. It's the fun way to get the most out of your PIXMA printer!



www.canon.com/c-park

\* For proper storage conditions, see specifications for details.

PRINT		
Maximum Printing Resolution		4800 (horizontal)*1 x 1200 (vertical) dpi
Print Head / Ink	Type	FINE™ Cartridge
	Total Number of Nozzles	1,792
	Ink Droplet Size (Min)	2pl
	Ink Tank	PG-740, CL-741 (PG-740XL, CL-741XL Optional)
	Print Speed	Document: Color*2 ESAT / Simplex approx. 5.7ipm Document: B/W*2 ESAT / Simplex approx. 9.9ipm Photo (4x6")*2 PP-201 / Borderless approx. 44sec.
Printable Width		Up to 203.2mm (8 inches), Borderless: Up to 216mm (8.5 inches)
Printable Area	Borderless Printing*3	Top / Bottom / Right / Left margin: each 0mm (Supported Paper Size: A4 / LTR / 4x6" / 5x7" / 8x10")
	Bordered Printing	Top margin: 3mm, Bottom margin: 5mm, Left / Right margin: each 3.4mm (LTR, LGL: Left: 6.4mm, Right: 6.3mm)
	Bordered Auto Duplex Printing	Top margin: 5mm, Bottom margin: 5mm, Left / Right margin: each 3.4mm (LTR, LGL: Left: 6.4mm, Right: 6.3mm)
Recommended Printing Area		Top margin: 32.5mm / Bottom margin: 33.5mm
Paper Size		A4, A5, B5, LTR, LGL, 4x6", 5x7", 8x10", Envelopes (DL, COM10)
Paper Handling (Front Tray) (Maximum Number)	Plain Paper	A4, A5, B5, LTR = 100, LGL = 10
	High Resolution Paper (HR-101N)	A4 = 80
	Photo Paper Pro Platinum (PT-101)	4x6" = 20, A4 / 8x10" = 10
	Photo Paper Plus Glossy II (PP-201)	4x6" = 20, A4 = 10
	Photo Paper Plus Semi-Gloss (SG-201)	4x6" = 20, A4 / 8x10" = 10
	Glossy Photo Paper "Everyday Use" (GP-501)	4x6" = 20, A4 = 10
	Matte Photo Paper (MP-101)	4x6" = 20, A4 = 10
	Photo Stickers (PS-101)	1
	T-Shirt Transfer (TR-301)	1
	Envelope	European DL, US Com. #10 = 5
	Support Media for Auto Duplex Printing	Type
	Size	A4, LTR
Paper Weight		Plain Paper: 64-105 g/m <sup>2</sup> , Canon specialty paper: max paper weight: approx. 300g/m <sup>2</sup> (Photo Paper Pro Platinum PT-101)
Ink End Sensor		Dot count
Print Head Alignment		Manual
SCAN		
Scanner Type		Flatbed
Scanning Method		CIS (Contact Image Sensor)
Optical Resolution*4		1200 x 2400dpi
Selectable Resolution		25 - 19200dpi
Scanning Bit Depth (Input / Output)	Grayscale	16 / 8bit
	Color	48 / 24bit (RGB each 16 / 8bit)
Line Scanning Speed*5	Grayscale	1.147 ms/lines (300dpi)
	Color	3.441 ms/lines (300dpi)
Scanning Speed*6	Reflective	A4 Color / 300dpi approx. 14sec.
Maximum Document Size	Flatbed	A4, LTR (216 x 297mm)
COPY		
Maximum Document Size		A4, LTR (216 x 297mm)
Compatible Media	Size	A4, A5, B5, LTR, 4x6", 5x7"
	Type	Plain Paper Photo Paper Pro Platinum (PT-101) Photo Paper Plus Glossy II (PP-201) Photo Paper Plus Semi-Gloss (SG-201) Glossy Photo Paper "Everyday Use" (GP-501) Matte Photo Paper (MP-101)
Image Quality		3 positions (Fast, Standard, High)
Density Adjustment		9 positions, Auto intensity (AE copy)
Copy Speed*7	Document: Color	sFCOT / Simplex approx. 20sec. sESAT / Simplex approx. 4.3ipm
	Document: B/W	sFCOT / Simplex approx. 20sec. sESAT / Simplex approx. 4.3ipm
Multiple Copy	Black / Color	max. 99 pages

NETWORK			
Protocol		TCP / IP	
Wireless LAN	Network Type	IEEE802.11n / IEEE802.11g / IEEE802.11b (infrastructure mode)	
	Frequency Band	2.4GHz	
	Data Rate		IEEE802.11n: Max. 150Mbps IEEE802.11g: Max. 54Mbps IEEE802.11b: Max. 11Mbps
		Range	Indoor 50m (depends on the transmission speed and conditions)
		Security	WEP (64 / 128bit) WPA-PSK (TKIP / AES) WPA2-PSK (TKIP / AES)

SYSTEM REQUIREMENTS		
Windows	(Please visit <a href="http://www.canon-asia.com">www.canon-asia.com</a> to check OS compatibility and to download the latest driver updates)	Windows XP SP2, XP SP3 / Windows Vista SP1, Vista SP2 / Windows 7, 7 SP1
Macintosh		Mac OS X v10.4.11 - 10.7

GENERAL SPECIFICATIONS		
Quick Start		approx. 5sec.
Operation Panel	Display	LCD (2.4-inch / 6cm TFT color)
Interface		Wireless LAN b/g/n, USB 2.0 Hi-Speed, Memory Card Slots
Operating Environment		Temperature: 5 - 35°C; Humidity: 10 - 90% RH (no dew condensation)
Storage Environment		Temperature: 0 - 40°C; Humidity: 5 - 95% RH (no dew condensation)
Acoustic Noise (PC Print)*8		approx. 42.5dB
Power		AC100 - 240V, 50/60Hz
Power Consumption	Standby	approx. 3.0W
	Copying*9	approx. 21W
Environment	Regulation	RoHS (EU, China), WEEE (EU)
	Eco-Label	Energy Star
Dimension (WxDxH)		approx. 449 x 304 x 152mm
Weight		approx. 5.7kg

Specifications are subject to change without notice.

- \*1 Ink droplets can be placed with a pitch of 1/4800 inch at minimum.
- \*2 Document print speeds are the averages of ESAT in Office Category Test for the default simplex mode, ISO/IEC 24734.  
Photo print speed is based on the default setting using ISO/JIS-SCID N2 on Photo Paper Plus Glossy II and does not take into account data processing time on host computer.  
Print speed may vary depending on system configuration, interface, software, document complexity, print mode, page coverage, type of paper used, etc.
- \*3 Paper types NOT supported for borderless printing are as follows: Envelope, High Resolution Paper, T-Shirt Transfer, Photo Stickers.
- \*4 Optical resolution is a measure of maximum hardware sampling resolution, based on ISO 14473 standard.
- \*5 The fastest speed via Hi-Speed USB on Windows PC. Transfer time to computer is not included.
- \*6 Color document scan speed is measured with ISO/IEC 24735 Annex C Test Chart A.  
Scan speed indicates the time measured between pressing the scan button of the scanner driver and the on-screen status display turning off.  
Scan speed may vary depending on system configuration, interface, software, scan mode settings, document size, etc.
- \*7 Copy speeds are the average of sFCOT and sESAT, ISO/IEC 29183.  
Copy speed may vary depending on document complexity, copy mode, page coverage, type of paper used, etc., and does not take into account warm-up time.
- \*8 When printing ISO/JIS-SCID N2 pattern on 4x6" Photo Paper Plus Glossy II using default settings.
- \*9 When copying ISO/JIS-SCID N2 (printed by inkjet printer) on A4 size plain paper using default settings.

#### \*CHROMALIFE100 PROPER STORAGE CONDITIONS

100-year life in an album:  
<Criteria for estimation> The permanence presented above is estimated using an accelerated dark storage test and designed for silver-halide photos (ISO/FD18909). Samples are printed with an optical density of 1.0 (each black, cyan, magenta, yellow) and kept in a controlled environment of high temperature and 50% relative humidity. The test environment is designed to accelerate color fading. The rate of the decrease in the optical density and the rate of yellow discoloration of the paper are measured. Finally, the results are extrapolated to the length of time when a printed image is kept in an environment of 23°C 50% RH.

30-year lightfastness:  
<Criteria for estimation> When displayed in a glass frame in a typical indoor space (estimating 500 lux / 10 hours per day) without direct sunlight. Estimated lightfastness is made under the following test conditions. Light source: White fluorescent light 70,000 lux; Temperature: 24°C; Humidity: 60% RH; A 2mm thick glass is placed on the sample with an air gap between the glass and the sample during accelerated testing.

10-year gas fastness:  
<Criteria for estimation> Estimated gas fastness is made under the following test conditions: Temperature (24°C) and humidity (60% RH) are controlled in an environment of mixed gases of O<sub>2</sub>, NO<sub>x</sub> and SO<sub>x</sub>. The ratio of the gases is typical to indoor air composition (O<sub>2</sub>:NO<sub>x</sub>:SO<sub>x</sub> = 3: 18: 1) with 100 times concentration in order to accelerate fading.

<Criteria for estimation of print longevity> Estimates for image permanence are made using the Wilhelm Imaging Research, Inc. Endpoint criteria: Accumulated illuminance causes a monochromatic / reflective optical density loss of 20-35% (figures set respectively for each color, starting density of 1.0). Accumulated illuminance causes a difference in color balance of yellow, magenta and cyan (each component in composite black) of 12-18%.

<Tips>  
Making your printed images last longer: Light, environmental gases, high temperature and humidity can accelerate color fading. When displaying your photographs, avoid high intensity lighting and use glass-filtered frames. Photos stored in the dark, using archival quality albums or storage materials, will tend to last longer than photos that are exposed to light. Avoid high temperatures and high humidity to promote the image permanence of your photos.

Note: The image permanence estimates presented above may vary depending on display/ storage conditions. The expressed numbers of years estimates are the result of stimulated, accelerated tests conducted by Canon Inc. and do not represent a product guarantee.



# Canon

Delighting You Always

**SOUTH & SOUTHEAST ASIA REGIONAL  
HEADQUARTERS:**

## **CANON SINGAPORE PTE. LTD.**

1 HarbourFront Avenue #04-01 Keppel Bay Tower  
Singapore 098632  
Tel: 65-6799 8888 Fax: 65-6799 8882  
[www.canon-asia.com](http://www.canon-asia.com)

### **CANON OFFICES**

#### **INDIA:**

Canon India Pvt. Ltd.  
Tel: 91-124-4160 000  
Fax: 91-124-4160 011  
[www.canon.co.in](http://www.canon.co.in)

#### **MALAYSIA:**

Canon Marketing (Malaysia)  
Sdn. Bhd.  
Tel: 603-7844 6000  
Fax: 603-7845 0505  
[www.canon.com.my](http://www.canon.com.my)

#### **SINGAPORE:**

Canon Singapore Pte. Ltd.  
Tel: 65-6799 8888  
Fax: 65-6221 7577  
[www.canon.com.sg](http://www.canon.com.sg)

#### **THAILAND:**

Canon Marketing (Thailand)  
Co. Ltd.  
Tel: 66-2-3449 999  
Fax: 66-2-3449 967-68  
[www.canon.co.th](http://www.canon.co.th)

#### **VIETNAM:**

Canon Singapore Pte. Ltd.  
Ho Chi Minh City Representative  
Office & Showroom  
Tel: 84-8-8200 466  
Fax: 84-8-8200 477  
[www.canon.com.vn](http://www.canon.com.vn)

Hanoi Representative Office  
Tel: 84-4-7711 677  
Fax: 84-4-7711 678  
[www.canon.com.vn](http://www.canon.com.vn)

### **CANON BUSINESS PARTNERS**

#### **BANGLADESH:**

J.A.N. Associates  
Tel: 880-2-8611 444  
Fax: 880-2-8610 410

#### **BRUNEI:**

Interhouse Company  
Tel: 673-2-653 001  
Fax: 673-2-653 003

#### **CAMBODIA:**

i-Quick (Cambodia) Pte. Ltd.  
Tel: 855-23-996 638  
Fax: 855-23-996 639

#### **INDONESIA:**

P. T. Datascrip  
Tel: 62-21-2664 8999  
Fax: 62-21-6544 811-13  
[www.canon.co.id](http://www.canon.co.id)

#### **MALDIVES:**

SIMDI  
Tel: 960-333 4421  
Fax: 960-333 4424

#### **MYANMAR:**

Myanmar Golden Rock  
International Co. Ltd.  
Tel: 95-1-2020 92/3/4  
Fax: 95-1-202 079

#### **NEPAL:**

International Electronics  
Concern (P) Ltd.  
Tel: 977-1-4421 991  
Fax: 977-1-4421 909

#### **PAKISTAN:**

MBM International  
Tel: 92-21-3227 77093-4  
Fax: 92-21-3438 6308

#### **SRI LANKA:**

Metropolitan Computers  
(Pvt.) Ltd.  
Tel: 94-11-2437 797  
Fax: 94-11-2448 980

Dealer's Stamp