



### Phuket 3 Days 2 Nights Package

### 布吉島 3 日 2 夜自由行

### Effective: 01Jun – 31Oct

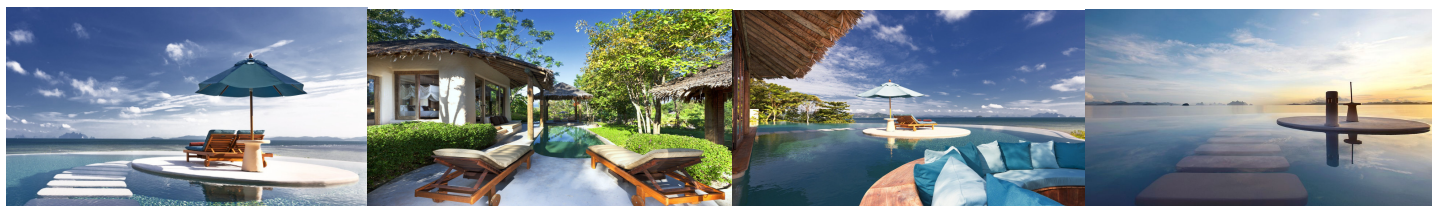
套票編號: 3HKTHX-GV2



出發日期 Period	附加費 Surcharge		訂位代號	有效期
	成人 Adult	小童 Child	Booking Class	Validity
01-27Jun, 30Jun-10Jul, 29Aug-18Sep, 21-26Sep, 30Sep-10Oct, 13-31Oct	N/A	N/A	S	GV2 0-1M
01Jun-31Oct	\$200	\$150	N	
	\$560	\$420	L	
	\$1080	\$810	K	

Distance from Phuket Airport to Major Area 布吉機場前往主要地區:

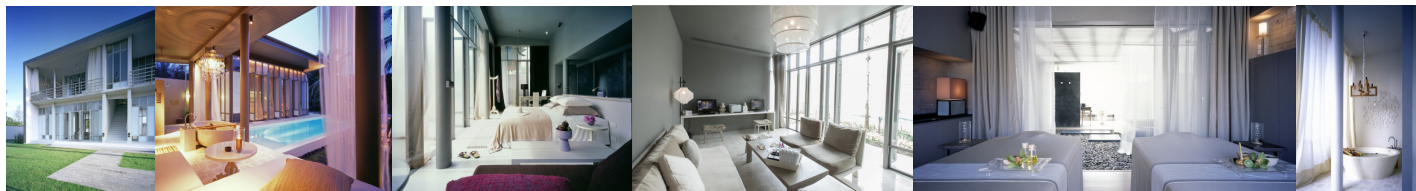
Naithon Beach – 10 mins; Maikhao Beach – 15 mins; Bangtao Beach – 15 mins; Patong Beach – 40 mins; Kata Beach / Karon Beach – 45 mins; Kamala / Surin Beach – 45 mins;



Hotel	Room Type	Stay Period	B'fast	Package Price Per Person			Extension Night			
				1/2 Twin	Single	Extra Bed	Twin	Single	E. Bed	
The Naka Island <a href="http://www.nakastrandphuket.com">www.nakastrandphuket.com</a>	Tropical Pool Villa	01Jun-31Oct	Yes	5228	8488	3868	3410	3410	980	
	Seaview Pool Villa			6048	10118	3868	4230	4230	980	
	➤ Stay 3 pay 2 include breakfast									
	Tropical Pool Villa	01Jun-31Oct	Yes	4898	7838	3868	3080	3080	980	
	Seaview Pool Villa			5638	9308	3868	3820	3820	980	
➤ Early Bird: Booking must be made at 30 Days prior to arrival										



Hotel	Room Type	Stay Period	B'fast	Package Price Per Person			Extension night			
				1/2 Twin	Single	Extra Bed	Twin	Single	E. Bed	
Regent Phuket Cape Panwa <a href="http://www.regenthotels.com">www.regenthotels.com</a>	Pavilion	01Jun-31Oct	Yes	3778	5578	---	1340	1340	---	
	Suite			4378	6788	---	1740	1740	---	
	Pool Villa			6078	10198	3898	2900	2900	1000	
	➤ Stay 3 pay 2 include breakfast									
	Complimentary selected mini bar	Pavilion	01Jun-31Oct	Yes	3258	4548	---	1420	1420	---
Suite		3638			5308	---	1820	1820	---	
Pool Villa		5258			8548	3898	3440	3440	1000	
➤ Flat Rate Promotion										



Hotel	Room Type	Stay Period	B'fast	Package Price Per Person			Extension night		
				1/2 Twin	Single	Extra Bed	Twin	Single	E. Bed
Sala Phuket <a href="http://www.salaresorts.com">www.salaresorts.com</a>	Deluxe Balcony	01Jun-31Oct	Yes	3118	4278	3328	1280	1280	710
	Garden Pool Villa	01Jun-31Oct	Yes	3638	5308	3328	1800	1800	710
	SALA Pool Villa			3848	5718	3328	2010	2010	710
Pool Villa Type Benefits for 2 persons ➤ Min 3 nights receive FREE airport transfer, one time free shuttle from resort to Patong as per resort's schedule ➤ Min 4 nights receive FREE airport transfer, one time free shuttle from resort to Patong as per resort's schedule, AND one set dinner (food only)									



### Phuket 3 Days 2 Nights Package

### 布吉島 3 日 2 夜自由行

### Effective: 01Jun – 31Oct

套票編號: 3HKTHX-GV2



出發日期 Period	附加費 Surcharge		訂位代號	有效期
	成人 Adult	小童 Child	Booking Class	Validity
01-27Jun, 30Jun-10Jul, 29Aug-18Sep, 21-26Sep, 30Sep-10Oct, 13-31Oct	N/A	N/A	S	GV2 0-1M
01Jun-31Oct	\$200	\$150	N	
	\$560	\$420	L	
	\$1080	\$810	K	

**Distance from Phuket Airport to Major Area 布吉機場前往主要地區:**  
 Naithon Beach – 10 mins; Maikhao Beach – 15 mins; Bangtao Beach – 15 mins; Patong Beach – 40 mins; Kata Beach / Karon Beach – 45 mins; Kamala / Surin Beach – 45 mins;

Hotel	Room Type	Stay Period	B'fast	Package Price Per Person			Extension Night			
				1/2 Twin	Single	Extra Bed	Twin	Single	E. Bed	
All Seasons Naiharn Phuket <a href="http://www.allseasons-naiharn-phuket.com">www.allseasons-naiharn-phuket.com</a>	Standard	01Jun-31Oct	Yes	2508	3058	2948	380	380	520	
	>Free round trip airport transfer >Complimentary round trip transfer to Promthep Cape (one time) >Complimentary Thai body massage 30 mins per person									
Angsana Laguna Phuket <a href="http://www.angsana.com">www.angsana.com</a>	Laguna Room	01Jun-31Oct	Yes	3378	4798	2948	1560	1560	520	
	Laguna Poolside			4468	6968	2948	2650	2650	520	
	Pool Residence 3 Bedroom			3508	Min 6 pax	2948	4820	---	520	
	>Stay 3 pay 2 include breakfast >Purchase two 120 minutes a la carte spa sessions and enjoy the third 120 minute massage complimentary									
	Laguna Room	01Jun-31Oct	Yes	3238	4508	2948	1420	1420	520	
	Laguna Poolside			4218	6468	2948	2400	2400	520	
	>Stay 3 pay 2 include breakfast >Purchase two 120 minutes a la carte spa sessions and enjoy the third 120 minute massage complimentary >Early Bird: Booking must be made at <b>30 days</b> prior to arrival									
	Pool Residence 3 Bedroom	01Jun-31Oct	Yes	3198	Min 6 pax	2948	3900	---	520	
	>Stay 3 pay 2 include breakfast >Purchase two 120 minutes a la carte spa sessions and enjoy the third 120 minute massage complimentary >Early Bird: Booking must be made at 7 days prior to arrival									
	2 Bedroom Loft	01Jun-31Oct	Yes	3228	Min 4 pax	2948	2680	---	520	
Suite 2 Bedroom	3338			Min 4 pax	2948	2890	---	520		
>Purchase two 120 minutes a la carte spa sessions and enjoy the third 120 minute massage complimentary										
Anantara Phuket Villas <a href="http://phuket.anantara.com/">http://phuket.anantara.com/</a>	Pool Villa	01Jun-04Jul	Yes	4628	7298	3928	2810	2810	1010	
		28Sep-06Oct		5368	8758	3928	3550	3550	1010	
		05Jul-25Aug		4898	7838	3928	3080	3080	1010	
		26Aug-27Sep, 07-31Oct		4628	7298	3928	2810	2810	1010	
	>Hot Deal Promotion (01Jun – 31Jul): Min 2 nights receive complimentary round trip airport transfer for 2 persons									
Aleenta Phang Nga <a href="http://www.aleenta.com/phuket/">www.aleenta.com/phuket/</a>	Ocean View Loft	01Jun-15Oct	Yes	3758	5558	2788	1920	1920	440	
	Pool Suite			4688	7398	2788	2870	2870	440	
	Ocean View Loft	16Oct-31Oct	Yes	4518	7078	2788	2680	2680	440	
	Pool Suite			5858	9738	2788	4040	4040	440	
	>Stay 4 pay 3 include breakfast									
Aleenta Grand Villas <a href="http://www.aleenta.com/phuket/">www.aleenta.com/phuket</a>	03 Bedroom Grand Villa Natai	01Jun-31Oct	Yes	4708	Min 6 pax	3058	8270	---	570	
	03 Bedroom Grand Villa Air			4468	Min 6 pax	3058	7560	---	570	
Amari Coral Beach Resort <a href="http://www.amari.com/coralbeach">www.amari.com/coralbeach</a>	Superior	01Jun-31Oct	Yes	2928	3748	2788	1090	1020	440	
Avista Phuket Resort & Spa <a href="http://katabeach.avisathotelsandresorts.com/">http://katabeach.avisathotelsandresorts.com/</a>	Deluxe	01Jun-31Oct	Yes	2728	3488	2508	890	890	300	
	Grand Deluxe			2808	3648	2508	970	970	300	
	>Stay 3 pay 2 include breakfast									
Avista Hideaway <a href="http://www.hideaway.avisathotelsandresorts.com">www.hideaway.avisathotelsandresorts.com</a>	Jacuzzi Suite	01Jun-31Oct	Yes	3868	5768	---	2050	2050	---	
	Tropical Hideaway Pool Suite			4958	7948	---	3140	3140	---	



### Phuket 3 Days 2 Nights Package

### 布吉島 3 日 2 夜自由行

### Effective: 01Jun - 31Oct

套票編號: 3HKTHX-GV2



出發日期 Period	附加費 Surcharge		訂位代號	有效期
	成人 Adult	小童 Child	Booking Class	Validity
01-27Jun, 30Jun-10Jul, 29Aug-18Sep, 21-26Sep, 30Sep-10Oct, 13-31Oct	N/A	N/A	S	GV2 0-1M
01Jun-31Oct	\$200	\$150	N	
	\$560	\$420	L	
	\$1080	\$810	K	

Distance from Phuket Airport to Major Area 布吉機場前往主要地區:

Naithon Beach - 10 mins; Maikhao Beach - 15 mins; Bangtao Beach - 15 mins; Patong Beach - 40 mins; Kata Beach / Karon Beach - 45 mins; Kamala / Surin Beach - 45 mins;

Hotel	Room Type	Stay Period	B'fast	Package Price Per Person			Extension Night		
				1/2 Twin	Single	Extra Bed	Twin	Single	Extra Bed
Boat House on Kata Beach <a href="http://www.boathousephuket.com/">http://www.boathousephuket.com/</a>	Superior Seaview	01Jun-31Oct	Yes	3458	4958	3168	1620	1620	630
	Deluxe Beachfront			3598	5228	3168	1760	1760	630
➤ Stay 4 pay 3 include breakfast									
Best Western Phuket Ocean <a href="http://www.phuket-ocean.com/">http://www.phuket-ocean.com/</a>	Superior	01Jun-31Oct	Yes	2308	2648	2238	490	490	170
The Bell Pool Villa Resort <a href="http://www.thebellphuket.com/">www.thebellphuket.com/</a>	Honeymoon Private Pool Villa	01Jun-31Oct	Yes	3968	5958	3058	2150	2150	570
	Luxury Private Pool Villa 2BR	01Jun-31Oct	Yes	3268	Min 4 pax	3058	2740	---	570
	Luxury Private Pool Villa 3BR	01Jun-31Oct	Yes	3048	Min 6 pax	3058	3440	---	570
Blue Marine Resort & Spa <a href="http://www.theblumarine.com">www.theblumarine.com</a>	Classic Seaview	01Jun-31Oct	Yes	2698	3438	2698	860	860	400
	Classic Pool Access			3028	4088	2698	1190	1190	400
➤ Stay 3 pay 2, compulsory breakfast at HKD160 per person ➤ Stay 3 nights get 30 mins head & shoulder massage for 2 persons ➤ Stay 4 nights get 30 mins head & shoulder massage PLUS Thai set dinner for 2 persons									
Centara Villas <a href="http://www.centarahotelsresorts.com">www.centarahotelsresorts.com</a>	Deluxe Villa	01Jun-31Oct	Yes	2838	3598	2568	1000	950	330
➤ Stay 3 pay 2, compulsory breakfast at HKD140 per person									
Centara Karon Resort <a href="http://www.centarahotelsresorts.com">www.centarahotelsresorts.com</a>	Superior at Terraces	01Jun-31Oct	Yes	2618	3168	---	780	730	---
➤ Stay 3 pay 2, compulsory breakfast at HKD140 per adult, HKD70 per child									
Centara Kata Resort <a href="http://www.centarahotelsresorts.com">www.centarahotelsresorts.com</a>	Deluxe	01Jun-31Oct	Yes	2608	3138	2508	770	710	300
➤ Stay 3 pay 2, compulsory breakfast at HKD140 per adult, HKD70 per child									
Water Front Suites by Centara <a href="http://www.centarahotelsresorts.com">www.centarahotelsresorts.com</a>	One Bedroom Suite	01Jun-31Oct	Yes	2488	2888	2298	650	590	190
	Two Bedroom Suite	01Jun-31Oct	Yes	2358	Min 4 pax	2298	940	---	190
Centara Grand Beach Resort <a href="http://www.centarahotelsresorts.com">www.centarahotelsresorts.com</a>	Deluxe Ocean Facing	01Jun-31Oct	Yes	3168	4358	2948	1330	1330	520
	Deluxe Ocean Facing	01Jun-31Oct	Yes	3868	5668	2948	2030	1980	520
➤ Stay 3 pay 2, compulsory breakfast at HKD210 per person									
Centra Ashlee Hotel <a href="http://www.centarahotelsresorts.com">www.centarahotelsresorts.com</a>	Superior	01Jun-31Oct	Yes	2378	2788	2348	540	540	220
	Superior	01Jun-31Oct	Yes	2548	3028	2348	710	660	220
➤ Stay 3 pay 2, compulsory breakfast at HKD110 per person									
Centara Grand West Sands Resort & Villas <a href="http://www.centarahotelsresorts.com">www.centarahotelsresorts.com</a>	Deluxe	01Jun-31Oct	Yes	2598	3218	2788	760	760	440
➤ Free upgrade to Deluxe Suite 1 Bedroom (Subject to availability) ➤ Unlimited access to Splash Jungle Water Park									
Double Tree Resort by Hilton <a href="http://doubletree3.hilton.com">http://doubletree3.hilton.com</a>	Deluxe	01Jun-31Oct	Yes	2568	3168	2758	730	730	420
	One Bedroom Suite			2868	3758	2758	1030	1030	420



### Phuket 3 Days 2 Nights Package

### 布吉島 3 日 2 夜自由行

### Effective: 01Jun – 31Oct

套票編號: 3HKTHX-GV2



出發日期 Period	附加費 Surcharge		訂位代號 Booking Class	有效期 Validity
	成人 Adult	小童 Child		
01-27Jun, 30Jun-10Jul, 29Aug-18Sep, 21-26Sep, 30Sep-10Oct, 13-31Oct	N/A	N/A	S	GV2 0-1M
01Jun-31Oct	\$200	\$150	N	
	\$560	\$420	L	
	\$1080	\$810	K	

Distance from Phuket Airport to Major Area 布吉機場前往主要地區:

Naithon Beach – 10 mins; Maikhao Beach – 15 mins; Bangtao Beach – 15 mins; Patong Beach – 40 mins; Kata Beach / Karon Beach – 45 mins; Kamala / Surin Beach – 45 mins;

Hotel	Room Type	Stay Period	B'fast	Package Price Per Person			Extension Night		
				1/2 Twin	Single	Extra Bed	Twin	Single	E.Bed
Imperial Adamas Beach Resort <a href="http://www.imperialadamas.com">www.imperialadamas.com</a>	Luxury	01Jun-31Oct	Yes	3188	4418	4138	1350	1350	1120
	> Stay 3 pay 2 include breakfast > Free airport transfer								
	Beachfront Pool Villa	01Jun-31Oct	Yes	3268	4578	3058	2740	2740	1120
	> Stay 2 pay 1 include breakfast > Free Thai set dinner or Free 01 hour oil massage for 2 persons > Free airport transfer for 2 persons								
Ibis Phuket Patong <a href="http://www.accorhotels.com">www.accorhotels.com</a>	Standard	01Jun-31Oct	Yes	2208	2458	---	370	370	---
Ibis Phuket Kata <a href="http://www.ibis.com">www.ibis.com</a>	Standard	01Jun-31Oct	Yes	2198	2428	---	360	360	---
Kalima Resort & Spa <a href="http://www.kalimaresort.com">www.kalimaresort.com</a>	Deluxe	01Jun-31Oct	Yes	2758	3548	2788	920	920	440
	Deluxe Seaview	01Jun-31Oct	Yes	3028	4088	2788	1190	1190	440
	> Stay 3 pay 2 include breakfast								
L'esprit de Naiyang <a href="http://www.lespritresort.com">www.lespritresort.com</a>	Sky Deluxe	01Jun-31Oct	Yes	2358	2758	2598	520	520	340
	Ocean – Pool Villa	01Jun-31Oct	Yes	2788	3598	2598	950	950	340
Maikhao Dream Villa <a href="http://www.maikhaodream.com">www.maikhaodream.com</a>	Two Bedroom Beachfront Pool Villa	01Jun-31Oct	Yes	4418	Min 4 pax	3378	5040	---	740
	Three Bedroom Beachfront Pool Villa	01Jun-31Oct	Yes	4508	Min 6 pax	3378	7810	---	740
	> Stay 3 nights receive one way airport pick up								
Maikhao Dream Resort & Spa, Natai <a href="http://www.maikhaodream.com">www.maikhaodream.com</a>	Deluxe	01Jun-31Oct	Yes	2998	4038	3058	1160	1160	570
	> Stay 3 nights get free 30 mins Thai Traditional massage per person per room (max 2 persons)								
Mercure Phuket Deevana <a href="http://www.mercurephuketdeevana.com">www.mercurephuketdeevana.com</a>	Superior City View	01Jun-31Oct	Yes	2488	2998	2618	650	650	360
	Superior Pool View			2568	3168	2618	730	730	360
	Superior City View	01Jun-31Oct	Yes	2718	3458	2618	880	880	360
	> Stay 3 pay 2 include breakfast								
The Naka Phuket <a href="http://www.thenakaphuket.com">www.thenakaphuket.com</a>	Pool Villa Ocean	01Jun-31Oct	Yes	4648	7318	3108	2830	2830	600
Novotel Phuket Vintage Park <a href="http://www.novotel.com">www.novotel.com</a>	Superior	01Jun-31Oct	Yes	2678	3378	2618	840	840	360
	Pool Access			3058	4138	2618	1220	1220	360
	> Stay 7 pay 6 include breakfast								
	Superior	01Jun-31Oct	Yes	2608	3238	2618	770	770	360
	Pool Access			2948	3928	2618	1110	1110	360
> Early Bird: Booking must be made at 30 days in advance									
Novotel Phuket Resort <a href="http://www.novotel.com">www.novotel.com</a>	Superior	01Jun-31Oct	Yes	2648	3328	2618	810	810	360
	> Min 3 nights get one time free buffet dinner at Coffee House Restaurant for 2 persons > Min 3 nights get Free upgrade to Partial Seaview Room (Subject to availability) > Buy one get one free for all massage								





### Phuket 3 Days 2 Nights Package

### 布吉島 3 日 2 夜自由行

### Effective: 01Jun – 31Oct

套票編號: 3HKTHX-GV2



出發日期 Period	附加費 Surcharge		訂位代號	有效期
	成人 Adult	小童 Child	Booking Class	Validity
01-27Jun, 30Jun-10Jul, 29Aug-18Sep, 21-26Sep, 30Sep-10Oct, 13-31Oct	N/A	N/A	S	GV2 0-1M
01Jun-31Oct	\$200	\$150	N	
	\$560	\$420	L	
	\$1080	\$810	K	

Distance from Phuket Airport to Major Area 布吉機場前往主要地區:

Naithon Beach – 10 mins; Maikhao Beach – 15 mins; Bangtao Beach – 15 mins; Patong Beach – 40 mins; Kata Beach / Karon Beach – 45 mins; Kamala / Surin Beach – 45 mins;

Hotel	Room Type	Stay Period	B'fast	Package Price Per Person			Extension Night			
				1/2 Twin	Single	Extra Bed	Twin	Single	E.Bed	
<b>Outrigger Laguna Phuket</b> <a href="http://www.outriggerthailand.com">www.outriggerthailand.com</a>	01 Bedroom Suite	01-30Jun	Yes	3108	4238	2788	1270	1270	440	
	02 Bedroom Suite			2738	Min 4 pax	2788	1700	---	440	
	03 Bedroom Pool Villa			2818	Min 6 pax	2788	2750	---	440	
	>Min 3 nights receive one time complimentary lunch buffet for all registered guest									
	01 Bedroom Suite	01Jul-31Oct	Yes	3388	4808	2788	1550	1550	440	
	02 Bedroom Suite			2878	Min 4 pax	2788	1980	---	440	
	03 Bedroom Pool Villa			2998	Min 6 ax	2788	3280	---	440	
>Stay 4 pay 3 include breakfast for all guests										
<b>Pullman Arcadia Naithon</b> <a href="http://www.pullmanhotels.com">www.pullmanhotels.com</a>	Deluxe	01Jun-31Oct	Yes	3138	4308	---	1300	1300	---	
	One Bedroom Pool Villa			7008	12048	---	5170	5170	---	
	>Stay 3 pay 2 include breakfast									
	Deluxe	01Jun-30Sep	Yes	2698	3438	---	860	860	---	
	Ocean			2868	3758	---	1030	1030	---	
>Flat rate promotion: Booking must be made on or before <b>30Jun</b> >Receive 2 x complimentary 60 mins Thai Massages during stay										
<b>Sea Pearl Villas Resort</b> <a href="http://www.seapearlvillasphuket.com">www.seapearlvillasphuket.com</a>	Deluxe with Jacuzzi	01Jun-31Oct	Yes	2788	3598	---	950	950	---	
	>Stay 4 pay 3, compulsory breakfast at HKD120 per person									
	Deluxe with Jacuzzi	01Jun-31Oct	Yes	2698	3438	---	860	860	---	
>Early bird: Booking must be made at 30 days in advance										
<b>Sunwing Resort &amp; Spa Bangtao Beach</b> <a href="http://www.sunwingphuket.com">www.sunwingphuket.com</a>	Studio	01Jun-31Oct	Yes	2768	3568	2458	930	930	270	
	>Stay 4 pay 3 include breakfast >Special offer for couples: THB500 per room per night for using for F&B only									
<b>Sawaddi Patong Resort</b> <a href="http://www.patongsawaddi.com">www.patongsawaddi.com</a>	Superior	01Jun-31Oct	Yes	2388	2808	2508	550	550	300	
	>Stay 3 pay 2, compulsory breakfast at HKD140 per person									
<b>Villa Zolitude</b> <a href="http://www.villazolitude.com">www.villazolitude.com</a>	Deluxe Pool Villa	01Jun-31Oct	Yes	4418	6858	2948	1780	1780	520	
	Grand Pool Villa			4818	7678	2948	2060	2060	520	
	>Free mini bar (replenished daily) >Stay 3 pay 2 include breakfast									
<b>Child 1/2 twin based on Adult 1/2 twin</b>				<b>LESS HKD400</b>						



### Phuket 3 Days 2 Nights Package

### 布吉島 3 日 2 夜自由行

### Effective: 01Jun – 31Oct

套票編號: 3HKTHX-GV2



出發日期 Period	附加費 Surcharge		訂位代號	有效期
	成人 Adult	小童 Child	Booking Class	Validity
01-27Jun, 30Jun-10Jul, 29Aug-18Sep, 21-26Sep, 30Sep-10Oct, 13-31Oct	N/A	N/A	S	GV2 0-1M
01Jun-31Oct	\$200	\$150	N	
	\$560	\$420	L	
	\$1080	\$810	K	

Distance from Phuket Airport to Major Area 布吉機場前往主要地區:

Naithon Beach – 10 mins; Maikhao Beach – 15 mins; Bangtao Beach – 15 mins; Patong Beach – 40 mins; Kata Beach / Karon Beach – 45 mins; Kamala / Surin Beach – 45 mins;

Hotel	Room Type	Stay Period	B'fast	Package Price Per Person			Extension Night		
				1/2 Twin	Single	Extra Bed	Twin	Single	Extra Bed
Outrigger Phi Phi Island <a href="http://www.sunwingphuket.com">www.sunwingphuket.com</a>	<b>Compulsory transfer:</b>		➢HKD470 per person per way from Phuket Airport						
	Superior Bungalow	01Jun-31Oct	Yes	3318	4658	2838	1480	1480	460
	➢Stay 3 pay 2, compulsory breakfast at HKD200 per person (Not combinable with upgrade) ➢Superior Bungalow upgrade to Deluxe Bungalow (Subject to availability)								
	Superior Bungalow	01Jun-31Oct	Yes	2948	3928	2838	1110	1110	460

**Package price includes:**

- Roundtrip economy class air ticket by Hong Kong Airlines
- 2 Nights hotel accommodation ;Security charge
- Daily breakfast (Except those with No not include breakfast)

**Package price excludes:**

- Hong Kong Airport tax, fuel surcharge & Thailand Airport tax

**Remarks:**

- Deposit \$1000 per person( within 7 working days prior to departure, full payment is required)
- Prices are applicable to HK market only
- Prices are subject to change without prior notice.
- No refund for any unused portion.
- HK Travel Industry Council recommends every traveller to take out the travel insurance that meets his/her needs before the journey

**費用包括:**

- 香港航空來回經濟客位機票
- 2 晚酒店住宿;保安稅
- 每天酒店早餐(有 No 不包早餐)

**費用不包括:**

- 香港機場稅, 燃油附加費及泰國機場稅

**注意事項:**

- 訂金每位\$1000(不足七個工作天須繳付全數)。
- 只適用於香港市場
- 以上價目如有任何更改, 恕不另行通告
- 任何未茲應用之套票項目, 恕不予退款。
- 凡參加此自遊行之客人, 必須持有效之綜合旅遊保險; 建議客人於本社購買旅遊保險。

3HKTHX-GV2(040613)HP / OP by CCTL