

pellon®

*The Magic
in the Middle*

Picnic Bag and Blanket Set Skill Level: Advanced

Designed By
Bev McCullough
www.Flamingotoes.com



The blanket is a 45" square, a perfect size to sit on to enjoy a light lunch, picnic or snack and is embellished with fun appliqued words. The bag is fully lined and insulated with Pellon® Insul-Fleece™ to help keep your picnic foods the right temperature. It has two large pockets inside, big enough to hold supplies or a wine bottle. There is a large pocket on the back to hold your folded blanket for easy carrying.

Fabrics Needed

Outside fabric	2 1/2 yards
Lining fabric	4 yards
Accent Fabric 1 (bag/blanket)	1 yard
Accent Fabric 2 (bag/blanket)	1 yard

Materials Needed

975 Insul-Fleece™	2 yards
Legacy™ by Pellon Polyester Batting PB-96	1/2 yard
725 Heavy Duty Wonder-Under®	1/2 yard
809 Decor-Bond®	2 yards
Pellon® Ultra-Thin Poly™ L998-48	1 1/3 yards
810 Tru-Grid #810	2 yards
Thread	
1" wide elastic	14"
1 Heavy Duty 22" Zipper	
Flexible Plastic Canvas	9" x 13"

Tools Needed

Sewing Machine and related Supplies
Iron & Ironing Board
Scissors

Designer Bev McCullough
Graphic Artist Alexandra Henry

PERMISSION IS GIVEN TO REPRODUCE FOR PERSONAL USE ONLY ©2011 - PCP Group, LLC

Picnic Quilt Instructions

All seam allowances are 1/2". Basting allowances are 1/4".

Cut out quilt letter rectangles using pattern piece. Trace the lettering (see letter template pages) onto the paper side of Pellon® Heavy Duty Wonder-Under. Iron Wonder-Under to the wrong side of the quilt letter pieces. Cut out the letters. Peel off paper.



Cut out the base color rectangles. Iron the words, centered on the rectangles. Leave enough space around the letters so they are not covered by the ruffle when it is attached.



Sew around all the letters with a small satin stitch. Repeat for all four words on the four rectangle pieces.



Cut out the quilt background top, 45" x 45".

Place the rectangles at each corner, so they extend along the bottom and as each corner is turned towards a person, the words can be read. The rectangles should be 7" in from both sides of each corner. Baste into place.



Cut out the rectangle ruffles on the bias. Do any piecing necessary. Hem each end of the ruffle by turning under the short sides 1/4" twice. Sew a gathering stitch down the center of the ruffle.



Place the ruffle around the rectangle so the two ends overlap at the bottom of the rectangle. Sew the ruffle on down the center over the gathering stitch, easing around the corners. Remove the basting stitch. Repeat for all four rectangles.



Cut out quilt back and Pellon Ultra Thin Polyester Batting 45" x 45". Make a "sandwich" layering them with the batting between the wrong sides of the quilt back and the quilt top. Pin together with safety pins or your preferred basting method.



For quilting, stitch around all the letters, just inside the satin stitching. Sew down the center stitching line of the ruffle around all the rectangles.



Quilt the remainder of the quilt as desired. Sample used a random stippling quilting.



Trim all sides of the quilt even. Bind as desired. Sample used a 3" bias binding, machine stitched on.



Picnic Bag Instructions

Cut out all pattern pieces, fabrics, interfacings and Insul-Fleece. Iron the Decor Bond to the wrong side of all outside fabric pieces.

For the two top pieces, layer together the polyester batting piece, the Insul-Fleece piece and the outside fabric piece. The right side of the fabric should be facing up. Do this for both sides of the top. Sew the zipper between the two top pieces. Baste around the three remaining sides of the top pieces, 1/4" from the edge.



Stack together the polyester batting, Insul-Fleece and outside fabric for the bottom side pieces as was done for the top pieces. Baste together the stacks, 1/4" from the edge.



Sew the bottom side pieces, right sides together, to each short end of the top piece.



Press the seam allowances towards the bottom side pieces. Topstitch along the top of each bottom side piece, 1/4" from the seam.



Sew together the following pieces: outside bottom, bottom side pieces and top pieces. This will create a tube.



Sew along the top edge of the two outside pocket pieces, right sides together. Turn right side out and press the top seam. Sew another row of stitching along the outside 1 1/2" below the top to form a casing. Cut a 13" piece of elastic and feed through the casing. Baste each end of the elastic on the sides of the casing.



Using the pattern markings, create the pleats in the bottom of the pocket. Baste around the two sides and bottom of the pocket piece using a 1/4" seam. Trim the two bottom corners so they are rounded. Use the bottom of the outside front pattern piece as a guide.



If not already done, iron the Decor Bond to two of the strap pieces. Place those pieces right sides together with the two remaining strap pieces. Sew along the long sides of the straps. Turn straps right sides out and press.



Prepare your outside front and back pieces. Baste the layers together. Using the markings on the pattern, place one strap on the back piece so that the ends line up with the bottom of the outside back piece. Pin in place. Sew the straps onto the outside back up to the marked point on the back, just inside the edge of the strap. Sew across the strap, then sew back down the other side. Repeat with the other side of the strap piece.



Place the outside pocket piece over the outside back piece, lining up the sides and bottom of the pieces. Baste the pieces together with a 1/4" seam.



Layer the two outside front ruffle pieces together, so that the smaller ruffle piece is on top of the larger. The top should be angled and the smaller piece should be 1/2" below the larger. Sew a gathering stitch down the inside edge of each ruffle set.



Place the ruffles on each side of the front strap. Sew the strap on the same way the back was done, but catch the ruffle pieces under the strap as it is sewn.



Pin the tops of the straps down onto the outside pieces so that they are out of the way. Sew the outside front piece to the tube that was made earlier. Make sure the bottom lines up and the two bottom side pieces are at the same horizontal point on the outside front piece.



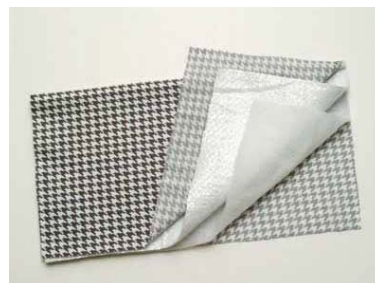
Open up the zipper on the top piece. Sew the outside back piece to the side tube, just like you did for the front. Turn right side out and press the seams open.



Press down one side 1/2" on each of your top lining pieces. Place these folded sides towards each other. Line up the bottom side lining pieces with the tops so that the outer edges line up. There will be a space in the center for the zipper. Sew the bottom sides to the top sides for the lining.



Prepare the inner lining pocket. Layer the two pocket pieces rights sides together, then layer Insul-Fleece and Polyester Batting on top. Sew along the top edge. Turn right side out and press.



Baste around the sides and bottom of the inner pocket. Line up the pocket with the bottom of the inside lining piece and baste the two sides down. Mark the center of the side piece and sew a seam down the center of the pocket. Fold the bottom of the pocket flat so that little pleats form inbetween the seams. Baste the bottom down. Trim the pocket corners so they are rounded like the outside lining piece.



Sew the remaining Lining Pieces together, following the steps done with the Outside Pieces.



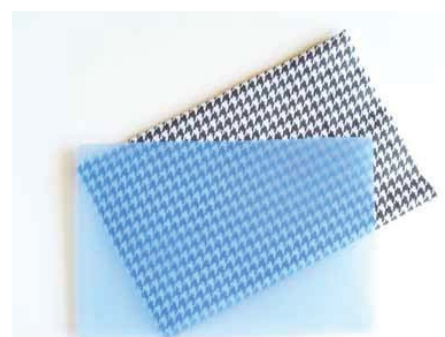
Turn the lining right side out and tuck inside the outside of the bag. Line everything up inside. The inner pocket should be against the outside back piece. Hand tack the lining into the bag by sewing through the lining seams and the outside seams to hide your stitches. Do this at several places around the bag, especially along the outer edges of the top pieces. Hand sew the lining to the inside of the zipper.



For the bottom insert, layer the pieces together so that the fabric pieces are right sides together, then add the Insul-Fleece and your polyester batting piece. Sew around three sides, leaving one short side open for turning. Trim the batting pieces close to the seam.



Turn the bottom insert right side out and press. Cut the insert piece $8\frac{1}{2}'' \times 12\frac{3}{4}''$. Slide the plastic insert inside. Tuck the open ends under around the plastic piece and sew the opening closed by hand. Place the bottom insert inside the bag.



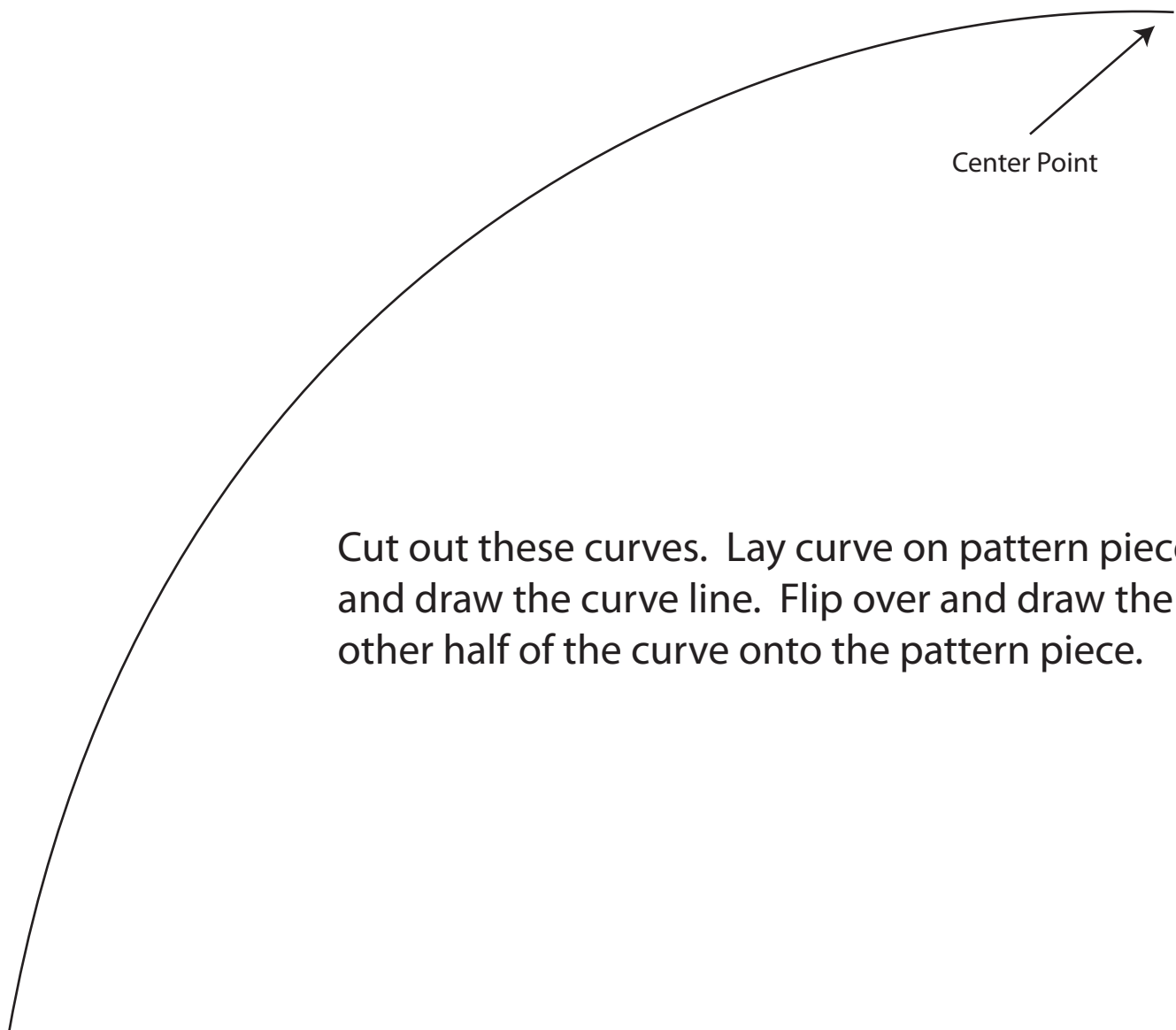
nzon

xbnz

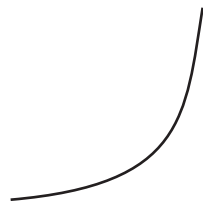
Joe

donum

Curve Cuts for Front and Back of Bag



Cut out these curves. Lay curve on pattern piece and draw the curve line. Flip over and draw the other half of the curve onto the pattern piece.



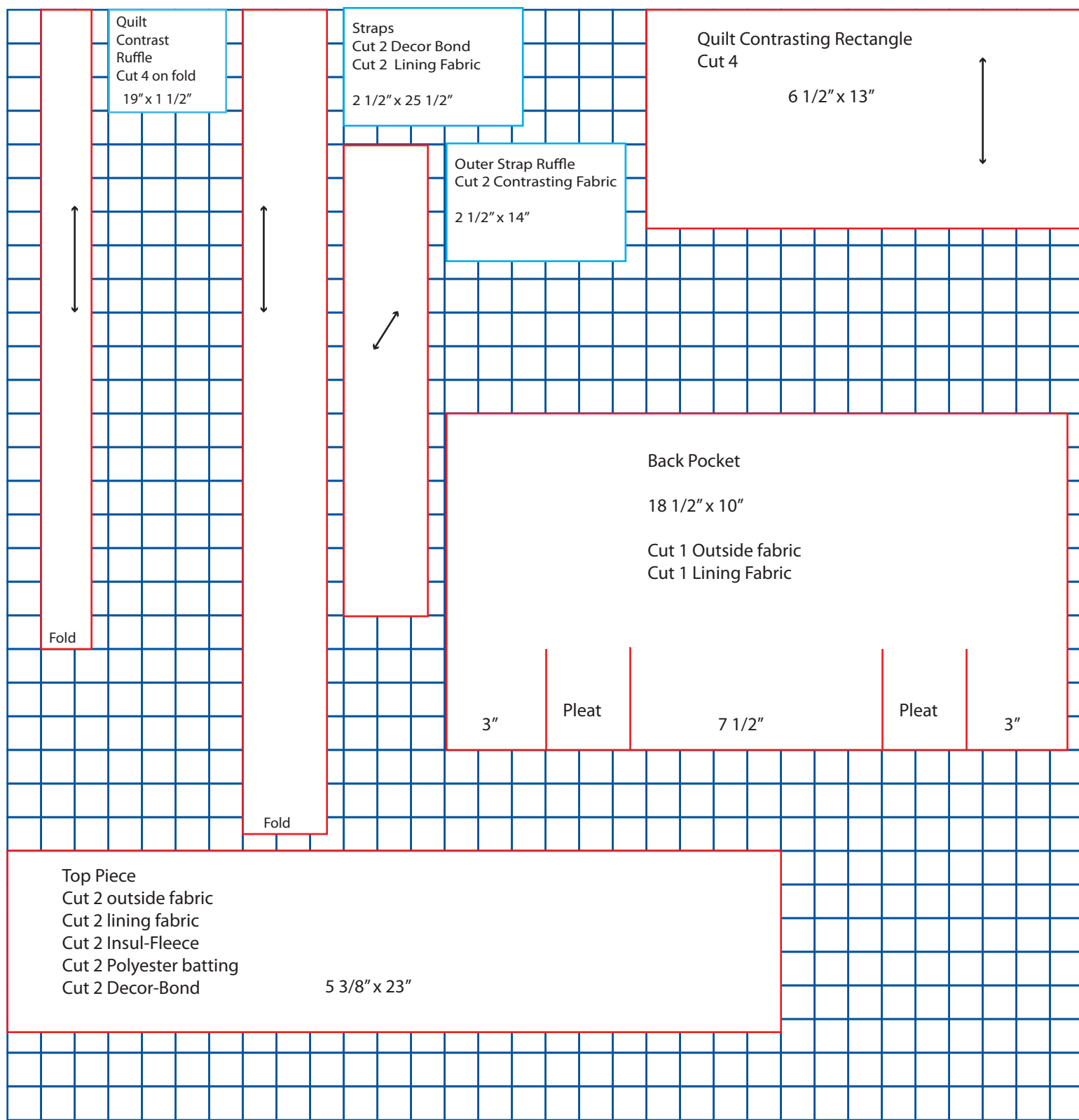
Bottom Curve Line for cutting curve AFTER sewing.

Project: Picnic Bag and Quilt Set

Designer Bev McCullough
Graphic Artist Alexandra Henry

PERMISSION IS GIVEN TO REPRODUCE FOR PERSONAL USE ONLY ©2011 - PCP Group, LLC

Tru-Grid Layout for Pattern Pieces



Designer Bev McCullough
Graphic Artist Alexandra Henry

PERMISSION IS GIVEN TO REPRODUCE FOR PERSONAL USE ONLY ©2011 - PCP Group, LLC

Tru-Grid Layout for Pattern Pieces

