

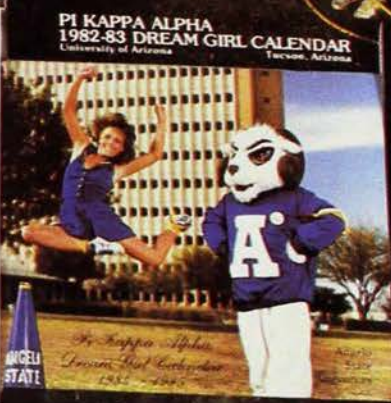
SHIELD & DIAMOND

OF PI KAPPA ALPHA

MARCH 1985



Pi Kappa Alpha
Dreamgirl Calendar
1984-1985
Indiana State University
Terra Haute, Indiana
PKA



PI KAPPA ALPHA
1982-83 DREAM GIRL CALENDAR
Tucson, Arizona



1984
PI KAPPA ALPHA DREAM GIRL CALENDAR



OLE MISS
PIKE
CALENDAR



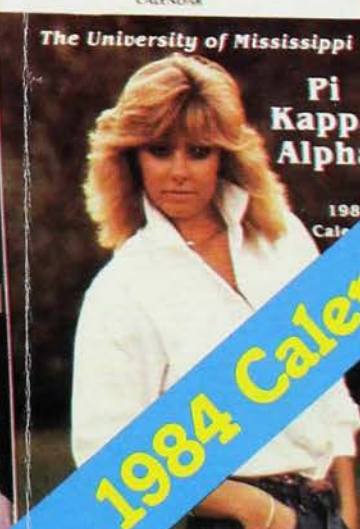
Pi Kappa Alpha
Dream Girl
OF ELLEN DRONIKOS



PI KAPPA ALPHA
1983-1984
CALENDAR



PI KAPPA ALPHA
Dream Girl Calendar
1984



The University of Mississippi
Pi Kappa Alpha
1985
Calendar



Π Α

1984 Calendar Competition



The 1984-1985 Pi Kappa Alpha

PI KAPPA ALPHA'S

August 7-11

at

Memphis State University

in

Memphis, Tennessee

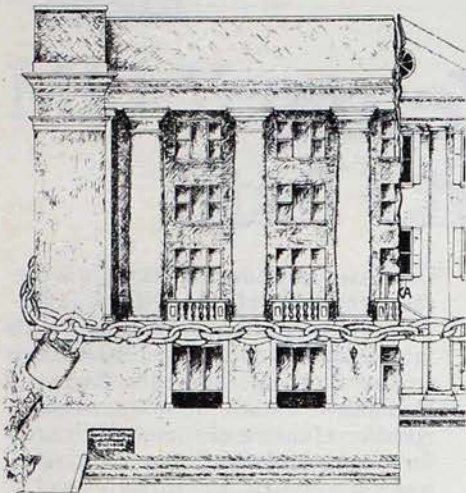
Who should attend:

- *SMCs*
- *IMCs*
- *ThCs*
- *Rush Chairmen*
- *Pledge Educators*

**1985
Officers' Leadership Academy**

Don't Miss It!

FEATURES



10 Who's Chapter Is It Anyway? by Dr. Larry Lunsford

The second part of a series examining fraternities on college campuses today.



16 Love Those Calendar Girls 1984 Calendar Competition



24 Diamond Anniversaries by Dr. Jerome V. Reel, Jr.

Pi Kappa Alpha celebrates 75 years above the Mason-Dixon.

SHIELD & DIAMOND

VOL. 96 NO 1 MARCH 1985

MASTHEAD

Published by
Pi Kappa Alpha Fraternity
577 University
Memphis, TN 38112
(901) 278-7464

Raymond L. Orians
Executive Vice President

Editorial Staff

Louis B. Quinto
Editor

Karen Null
Copy Editor

Dr. Larry Lunsford, Dr. Jerome V. Reel, Jr., Mark Anderson, Tim Fitzgerald, Mark Veach, Bill McCartan

Contributing Editors

Melody Albersen, Gwen DeShazo, Jamie Dye, Jessica Mann, Sandra Newsom
Editorial Assistants

Bob Shettlesworth
Art

Advertising
Contact Editorial Office

1984-86 Supreme Council

William N. LaForge
President

Charles R. Barnes
Vice President

E. J. "Ted" Grofer
Vice President

Edward A. Pease
Vice President

Thomas J. Turner
Vice President

Henry Salas
Undergraduate Vice President

Jeff Wittler
Undergraduate Vice President

Daniel F. McGehee
Legal Counsel

DEPARTMENTS



30 **PRO-FILE:** John D. Chandler

5 **UPDATE** News

7 **DELTA XI**

8 **BETA KAPPA**

22 **ALPHA OMEGA**

23 **THETA LAMBDA**

28 **ALUMNI NOTES**

32 **CHAPTER ETERNAL**

34 **SCHOLARSHIP AWARDS**

Cover Photo by Larry Kuzniewski and Clay Thomas

Photo Credits
Joe Stellone

SHIELD & DIAMOND (USPS 780-500) is an educational journal published by the Pi Kappa Alpha Fraternity, 577 University, Memphis, TN 38112 quarterly in September, December, March and June for \$.50 per year. Send correspondence to the same address. Manuscripts are invited, but the publisher will not assume responsibility for return of unsolicited material. Changes of address should be reported promptly by giving full name, chapter, old and new address. Undergraduate copies are mailed to their parents' home address until address change after graduation. Lifetime subscriptions **MUST** be renewed after eight years or with an alumnus gift to the *Loyalty Fund*. Copyright 1984 by Pi Kappa Alpha Fraternity. All rights reserved. Second Class postage paid at Memphis, TN and additional mailing offices.

POSTMASTER: Send address changes to SHIELD AND DIAMOND, 577 University, Memphis, TN 38112.

CFEA
MEMBER
COLLEGE FRATERNITY EDITORS ASSOCIATION

NIC Celebrates 75 Years

IKA's Dr. Nester elected to Board.

"COOPERATION MAKES Strength" was an appropriate theme for the National Interfraternity Conference's (NIC) 1984 Annual Meeting, as the fifty-nine member fraternities displayed significant interest in cooperating with colleges

"Congrats!"

THE SHIELD and Diamond is always a very interesting, well prepared publication, but the December 1984 issue covering Astronaut Dr. Jim van Hoften was super. Congratulations on a great job of presenting "Not Just a Typical Day at the Office."

Fraternally Yours,
O.W. "Bill" Oerman
Beta Eta '26

S&D Overlooks Football Coach

RECENTLY I read "Pikes Are Catalysts In 1984 Season" in December's issue of *Shield and Diamond*. In the last paragraph of the article it listed Pi Kappa Alpha head coaches. Omitted from this list was Dan Simrell, presently head coach of the University of Toledo Rockets, a Division I school. He has been head coach for the last three years. Under brother Simrell's leadership, the University of Toledo won the Mid American Conference and played in the California Bowl in Fresno, California on December 15, 1984.

Fraternally Yours,
David L. Lewis
Epsilon-Epsilon '67

Editor's note: Thanks for letting us know! We also found out that William P. McCartney (Alpha Nu '61) is the head football coach at the University of Colorado.

and universities, interfraternal organizations and each other.

The November 29 — December 2, meeting at the Galt House in Louisville, KY, was also momentous because of the celebration of the NIC's 75th anniversary. One highlight of the annual meeting was a special 75th gala, which featured a multi-media tribute to the Conference's member fraternities.

"The NIC '84 Annual Meeting will be remembered for the enjoyable activities of the 75th anniversary celebration and for the proactive programming sought by the Conference and its member fraternities," said Jonathan J. Brant, NIC executive director.

Nester Elected

For Pi Kappa Alpha, one of the highlights of the meeting was the election of former national president Dr. William R. Nester (Alpha Xi '47) to the NIC Board of Directors. He was elected to a one year term.

Currently, Dr. Nester is the president of Kearney State College in Kearney, NE. For many years he has been an active alumnus of the National Fraternity. His most recent position with the Fraternity was that of nominating committee chairman at the national convention in Dallas this past August.

Pi Kappa Alpha National President William LaForge says, "Dr. Nester has been a strong supporter of Pi Kappa Alpha and of the fraternity movement across the country for a long time. His election is proof that his support is highly recognized by others in the fraternity community."

Among the significant actions of the NIC House of Delegates were changes in the Conference's constitution and the adoption of several resolutions on contemporary issues, including campus fraternity system development, liaison with chief student affairs officers, legal issues, institutional relationship statements and scholarship.

A major emphasis of the meeting was cooperation and communication with colleges and universities, which was the basis for most of the House of

Delegates' actions. An example is the reaffirmation of the NIC's Resolution on Alcohol, which was unanimously adopted by NIC in 1983 annual meeting. The 1984 House of Delegates called for the redistribution of the resolution, which calls for responsible and lawful alcohol use, as well as nonalcoholic membership recruitment or "dry rush."

Also adopted by the House of Delegates was the NIC's Program of Services for 1985, which outlines the specific goals for the Conference in the coming year.

Emphasizing a commitment to government relations, the fraternity delegates approved the report of the law committee, including a model anti-hazing law to be targeted at states considering adoption of legislation outlawing illegal pre-initiation activities.

The NIC threw a birthday party to recognize the 75th anniversary of the Conference and the member fraternities. The event was appropriately called the 75th Anniversary Gala, and Dwayne R. Woerpel, president of Tau Kappa Epsilon, served as master of ceremonies.

The gala included a presentation of the NIC history "One Hundred and Seventy-five Glorious Years" by Jack L. Anson (former NIC Executive Director), the featured address by Howard R. Alter, Jr., (Executive Director Emeritus of Theta Chi Fraternity) a three-tier birthday cake and a multimedia tribute to the NIC member fraternities and the Conference.

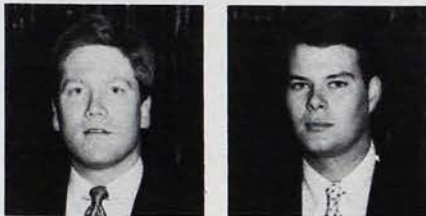
The finale and highlight of the gala was a three-minute filmed greeting from President Ronald Reagan (Tau Kappa Epsilon). In his greeting, Reagan said, "I want to offer my congratulations on your 75th anniversary. Your organization and the college and university fraternities you represent have good reason to be proud of your many achievements."

"The NIC and its members have done much to promote scholarship, to provide a valuable training ground for leadership and to advance the ideals which make America a good, caring society," Reagan added.

Mid-Year Staff Changes

Executive Vice President Raymond Orians recently announced two departures and two additions in the Fraternity's professional staff.

Leaving the staff in December were chapter consultants Larry Chandler and John Amsden. Chandler left the staff to pursue career interests while Amsden left to seek a degree in law.



Mudd

Harper

With two spots on the consultant staff open the Fraternity hired Wade Harper and Todd Mudd. Harper is an initiate of Xi chapter at the University of South Carolina. He graduated in 1984 with a degree in

political science. While he was in the chapter he served as SMC and IMC.

On campus Harper held several positions in the SGA including attorney general, chief justice of the campus court and a member of the SGA cabinet. He was also a member of The Order of Omega and Magna Kappa. Harper will be traveling the midwestern states.

Mudd is an initiate of Alpha Nu chapter at the University of Missouri-Columbia.

He graduated in May of 1984 and since then has been working on his MBA in finance at Florida State University. At Alpha Nu Mudd was SMC, rush chairman, alumni chairman and campus activities chairman. He was also the editor of two Pikeboys. On campus Todd was SGA president and a member of many other organizations. This past summer in Dallas at the Fraternity's national convention Mudd was named a runner up to the Powers Award. He will be traveling the northeast.

Pi Kappa Alpha Returning To Minnesota

PI KAPPA Alpha is returning to the University of Minnesota campus this spring. Beta Chi chapter was on the Minnesota campus from 1922 to 1936. Director of Expansion Scott Bell reports that the Supreme Council approved the recolonization plan in December after the plan for Pi Kappa Alpha's return was supported by the University of Minnesota administration and Pi Kappa Alpha area alumni in the Twin Cities.

The University of Minnesota has one of the highest enrollments in the country with approximately 64,000 students. Currently, there are twenty-four national fraternities represented on the campus.

The re-colonization will begin April 1 when Memorial Headquarters staff members, working with the Twin Cities alumni, will recruit the undergraduate men who will bring the Fraternity back to Minnesota. The official re-colonization ceremonies will occur on the third weekend in April.

The Twin Cities area alumni have

organized an alumni association that will support the new colony at Minnesota. The alumni association has met monthly since organizing last October.

David Wicker (Delta Gamma '73) is coordinating the alumni support effort along with Jon Hawks (Alpha Phi '72), Dan Nemmers (Alpha Phi '75), and Michael Palm (Delta Tau '79).

"We're really excited about supporting the re-colonization at Minnesota," Wicker says, "There are over 300 alumni in the Twin Cities area and the support shown for the alumni association has been very encouraging."

Beta Chi chapter alumni have also shown their desire to see their chapter re-activated. Robert C. Hahnen (Beta Chi '25), a long time loyal alumnus, has been instrumental in leading the Beta Chi alumni support.

In other expansion news the inspection for the colony at Chapman College was held on February 9 on the campus in Orange, CA. The

Attention Ft. Lauderdale Alumni

THE INAUGURAL meeting of the Ft. Lauderdale Alumni Association will be held on Thursday, March 21. The meeting will be held for the purpose of setting objectives and electing officers for 1984-85. The business meeting will begin at 6 p.m. followed by cocktails and hors d'oeuvres (dutch treat).

The site for the meeting will be the:

French Quarter Restaurant
215 S.E. 8th Avenue, Ft. Lauderdale.

All interested alumni should contact Glenn Leonard (Alpha Eta, Florida) at (305) 563-2671.

We look forward to seeing as many alumni as possible.

colony's petition is in the mail, and upon approval of two-thirds of the Fraternity's chapters, Chapman College will become Theta Psi chapter of Pi Kappa Alpha in March. A full story of the chartering will appear in the June issue of the *Shield & Diamond*.

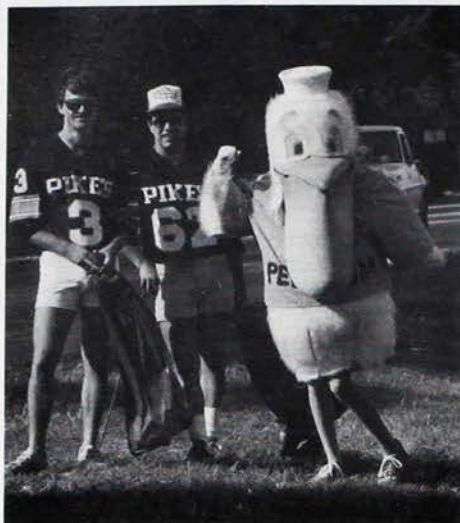
According to Director of Expansion Bell the colonies at the University of California-Davis, Michigan State University, and the re-establishment of Alpha Lambda chapter at Georgetown College (Kentucky) are progressing well.

California State University, Fresno has been approved for colonization next fall. Fresno area alumni are currently organizing support for that effort. Other expansion sites being pursued are at the University of California-Irvine, James Madison University, and the re-establishment of Delta chapter at Birmingham Southern College.

Alumni interested in assisting with these future sites are encouraged to contact Scott Bell at the Memorial Headquarters.

... Chapter Briefs ...

ALPHA DELTA Pikes at Georgia Tech University participated in a variety of projects with other fraternities and sororities on campus to help raise over \$78,000 for the Leukemia Society of America. The Pikes were able to raise \$1,230. Steve Smith served as chairman for the chapter. Alpha Delta brothers Sam Davis and Mark Miller were members of the Drive's overall steering committee . . . **GAMMA LAMBDA** brother Howard Goldstein was elected president of Lehigh University's Interfraternity Council . . . **GAMMA UPSILON** Pikes at the University of Tulsa are keeping an eleven year tradition alive by putting three brothers on U.T.'S cheerleading squad. Since 1974 at least one member of the squad has been a Pike. According to the chapter the tradition has been sporadic since 1936 when the chapter's original local Phi Delta had several members on the squad. . . **THETA PHI** chapter at Wichita State put out its first Dream Girl Calendar last semester. Some of the chapter's other activities included raising \$1,000 for MDA, being pictured on the front page of two local newspapers unloading pumpkins which were sold by Big Brothers and Sisters of Wichita, and assisted with the Kansas National Charity Horse Show. The chapter's pledge class also racked up the highest grade point average for any fraternity pledge class in WSU history by receiving a 3.012 . . . **ALPHA NU** Pikes at the University of Missouri scored their third straight volleyball intramural championship last semester . . . After ten years of hosting the MDA pledge center in the Blackhawk region, brothers at **ETA NU** chapter at Northern Illinois University, knew that another similar assignment was not impossible. Therefore, the Pikes hosted the pledge center for this year's United Cerebral Palsy Telethon. On top of which they raised \$1,457 for the cause. Chapter treasurer David Shipley presented the check for Eta Nu on television during the telethon . . . During rush this past January **BETA ZETA** Pikes drew the fourth largest pledge class at SMU by pledging 33 men. . .



Pikes from Zeta Sigma chapter at Florida Institute of Technology pose with the Miami University mascot during the Annual Causeway Cleanup for Keep Brevard Beautiful, Inc.

Together, with another fraternity on Stephen F. Austin State University, **EPSILON OMICRON** gathered 2,800 cans of food to donate to the Nacogdoches Department of Human Resources. The cans were collected at an event the fraternities called *The Two-Can Dance*. The food was used for needy families during the Christmas holiday. . . **ETA ALPHA** Pikes at Clemson University recently dedicated its new trophy case in memory of Allen D. Porter. Porter died in a car accident on December 29, 1984. . . Scholarship is one of the themes that brothers at **BETA NU** chapter at Oregon State have adopted. This fall they leaped from twenty-fourth to fifth in the fraternity grade point standings. The chapter also raised \$800 this fall by sponsoring a *Wood Cut* . . . Recently, the Pikes of **ETA TAU** chapter at Austin Peay State purchased a new house which is located near the center of campus. The house is listed in the National Register of Historic Places (Patch-Catlett House.) Currently, renovations are taking place inside the house which should be completed this month (March). . . John Markels of **DELTA ETA** chapter at the University of Delaware was elected

president of the Council of Fraternity Presidents (IFC). Brothers Mike Daney and Kevin Kramer were both re-elected to the council as treasurer and program director respectively. Meanwhile SMC Mike Blando was elected president of the Order of Omega . . . **GAMMA** Pikes at the College of William and Mary were busy with community service projects last semester. The chapter raised over \$800 for the United Way, sponsored a bloodmobile for the Red Cross, participated in the Campus Escort Service, and donated money to the American Cancer Society . . . **ALPHA ETA** Pikes captured the All-Campus Flag Football crown at the University of Florida. This enabled the Pike's team to represent the university in the national Sugar Bowl tournament in New Orleans. The team made it to the quarter finals. The Pikes also were the 1984 All-Campus Basketball champions. . .

THETA CHI Pikes at Villanova University raised \$2,300 in one night at the Pre-Telethon United Cerebral Palsy Phonathon. This was the largest amount of money raised by any fraternity in the Philadelphia area. Members of the chapter were able to present their check to UCP on television during the telethon. . . **ETA UPSILON** Pikes were also involved with a local UCP broadcast. The group from the University of Texas at Arlington took pledges over the phone and also presented a check to the charity with money that they raised during their recent *Shrimpfest* . . . Pikes at Sam Houston State received recognition from their neighbors when the yard in front of the **EPSILON PI** chapter house was named Yard-of-the-Month in December. Huntsville Clean and Beautiful made the presentation. . . Parents of **EPSILON LAMBDA** brothers at Murray State University were treated to a special weekend in November. The chapter entertained the parents with a tailgate party, the MSU vs. Youngstown football game, and dinner at the chapter's lodge. The weekend was so successful that the chapter has elected to make this an annual event. . . Jeff Pedicini of **GAMMA TAU** chapter was elected IFC president at Rensselaer Polytechnic Institute.

Delta Xi Peddlin' To The Top



Sam Moore acknowledges the crowd during last year's Little 500 pace lap.

by Mark Veach

THE WHEELS are turning at high speed for the Pikes at Indiana University (Delta Xi), and they're turning in many different ways.

First the annual Student Foundation sponsored *Little 500* bike race (which was the story line in the movie *Breaking Away*) is just around the corner, and a very talented Pike team is in full gear. After a variety of starting and finishing positions in previous races, this year's Pike team is going all out.

The race is April 20, and the Delta Xi Pikes have been training since last August. The real test for this veteran team will come in these next few weeks when training will consist of 30-50 miles of daily road work, and indoor training on wind resistant machines. In addition, these Delta Xi bikers will devote their spring break and train for a solid week. The dedication to this race is but one example of the renewed commitment to excellence by Delta Xi in recent years.

The wheels inside the chapter are also turning as 1984 was a very successful year for the chapter.

In the fall, despite an unusual IU football season, homecoming brought one of the largest gatherings of alumni in Delta Xi's history.

Equally exciting news for the alumni is that Delta Xi's housing corporation had a financial gain of \$20,000. This gives the chapter a perfect opportunity to reinvest those funds into house renovations and new furniture. Delta Xi's financial stability was made possible by being one of the five largest chapters at IU totaling one hundred and six members.

In addition the chapter's successful rush program, its pledge education program provided Delta Xi with a pledge retention ratio well above 92 percent.

Sam Terry, Delta Xi's president approaches the new year positively, "Delta Xi has come back with a renewed spirit. We have a large resource of young members, many of whom are already holding offices. We've developed a formal planning and goal setting program and have high expectations for this semester in order to build for the future."

Outside the chapter house the Pikes at Indiana are equally impressive. A large percentage of Delta Xi members are involved in activities on campus such as the IU Student Foundation, the Student Athletic Board, the Student Alumni Association, IFC, and they also boast several Air Force ROTC officers. In addition Delta Xi claims a founding father to the Golden Key National Honor Society, an academic honorary organized to promote and develop scholastic excellence.

The Pike Dream Girl Calendar, which has been a long standing tradition at Indiana University, took on a new dimension for the chapter this year. In order to add to the chapter's financial stability, Delta Xi is using it as a fundraiser. Delta Xi, is also planning to attain new heights with their next publication as they are going to invest in an all color Dream Girl Calendar.

All over the country Indiana is known for its basketball. In keeping up that reputation the Pikes at IU approach basketball as a science, and in just two short years Delta Xi has jumped from fourteenth to sixth place in the tightly fought for

intramural standings. Even Bobby Knight can't scoff at an achievement like that.

Another upcoming event, IU Sing, an all Greek variety show, will test the prowess of Delta Xi this year. The Pikes are paired with the highly sought after Phi Mu sorority and together they have their sights set on first place. Like other functions that the Pikes at Indiana participate in, an IU Sing victory will be another goal they would enjoy adding to their list of successes.

"... we're building for the future."

Meanwhile, aside from the everyday social life at Delta Xi, which alone finds Indiana Pikes busy throughout the year, the chapter sponsors the largest annual dance at IU. *The Annual River Boat Dance*, as it's known, is nothing less than exciting each year. Raising funds needed to rent the three story river boat, *The Belle of Louisville*, and hiring one of the midwest's popular bands takes a lot of time for the brothers of Delta Xi.

Even with all this activity Indiana University Pikes do find time to study. They have been consistently above the all-men's average and the all-fraternity average.

The Greek system at Indiana University is the third largest in the country, and along with a traditional attitude at Indiana it takes an exceptional amount of effort to climb the hierarchy of Indiana's fraternity system. However, it's that challenge which motivates Delta Xi today!

The chapter plans to continue building onto the strong foundation that its outstanding alumni have left and to inevitably add to the strength of Pi Kappa Alpha across the country.

A Lesson In Commitment

by Mark Anderson

LISA BURNBACH, in *The College Handbook*, evaluated Emory University and noted that the campus suffers from a lack of spirit. Obviously, during her visit Ms. Burnbach did not encounter any Pikes from Beta Kappa chapter. If she had been a little more thorough, she would have discovered that the Pike chapter does not suffer in the least from a lack of spirit.

Pi Kappa Alpha at Emory is regarded as an undisputably outstanding fraternity, not only because of the tangible accomplishments this group has attained, but on account of its inward spirit.

Beta Kappa approaches every area of competition, whether it be softball or scholarship, quite seriously. Since 1919, this chapter has been a vital part of Emory's campus. The university itself dates back to 1834 and holds a prominent place among institutions of higher learning.

However, Emory is not renown for its athletic prowess, primarily because until recently, varsity athletics were precluded by the administration. Consequently, more than normal emphasis is placed on intramural activities. This makes Pi Kappa Alpha's three year streak of winning the coveted All-Row Sports Trophy that much more significant. No other organization has ever earned the recognition three consecutive years and the record stands to be broken this spring when Beta Kappa goes to claim it a fourth time.

With Emory's recent decision to allow varsity athletics, Beta Kappa has rallied to help field the new teams. Two Pikes are on the tennis team and four on the basketball team. The chapter also has members on the soccer, lacrosse and track teams.

This is the second year of competition for the Emory basketball team. In addition to supplying four players, the chapter's current SMC, Mitch Katz is co-founder of the squad and its captain. Katz attributes the chapter's high level of involvement to an attitude that is kinetic among the members, "Because the spirit in chapter activities is so high, it is only natural that our involvement in athletics and

other campus activities is also strong."

The strength is evidenced by the chapter's solid involvement in the college council, residence hall association, both the Emory school newspaper and the Greek newspaper, as well as a multitude of other organizations.

An area that receives an equal commitment from this group is academics. Their attitude towards scholastic performance is as serious as any they display on the athletic field. Over the past eight years, every Pike who has applied to professional school has been admitted to the school of his choice. The chapter's spring grade point average was an impressive 3.2, which ranked second among all PiKA chapters and first overall in the Dixie region.

Beta Kappa's accomplishments are indeed impressive by Pi Kappa Alpha's standards. The chapter pledged forty men last fall, the largest class among any fraternity, boosting its total membership to over one hundred. This past year, the members have revitalized the alumni program through periodic newsletters and a sensational alumni weekend which was climaxed by a banquet keynoted by immediate past National President, Joe Turner.

Community service involvement is another strong point for Beta Kappa. In recent years the chapter has raised over \$6,000 for the American Cancer Society, sponsored needy families at Thanksgiving and Christmas, and always participates in Atlanta's Egleston Hospital Christmas Day Parade which earned them front page coverage in *The Atlanta Constitution*.

Beta Kappa's unilateral success is certainly typical of any of our fraternity's excellent chapters. However, it is this chapter's attitude that is its most impressive feature. There is never an activity or project that is undertaken without a 100% commitment. This group's fortitude has produced a strong Pi Kappa Alpha chapter.

The members have come to realize that by giving 100% to the chapter, the rewards not only benefit the organization, but themselves as individuals.

There is no example which better illustrates our Fraternity's purpose more than the personal development gained by members who make a steadfast commitment to the overall chapter's objectives. Because this feeling is strong within this chapter, Beta Kappa will continue to be a shining star for Pi Kappa Alpha.



Beta Kappa members pose for a post-softball victory.

SMC Conference

Pi Kappa Alpha sponsored the twelfth annual SMC Conference on the weekend of January 11-13, 1985.

Eighty-one undergraduates representing seventy-one chapters and two colonies attended the two day conference at the Sheraton Hotel in Memphis, TN.

On hand at the conference was National Rush Director Tom Handler, Educational Advisory Committee member Dr. Jerry Askew, professional management consultant Bill Johnson, undergraduate Supreme Council Vice President Henry Salas, and the Fraternity's Memorial Headquarters staff.

The conference agenda included sessions on chapter management, rush, scholarship, alumni relations and pledge education. Bill Johnson presented a session for the participants entitled "Dealing With Different People Differently."

Executive Vice President Raymond L. Orians noted in his opening remarks to the conference that Pi Kappa Alpha is still the only national fraternity that sponsors a conference solely for its chapter presidents.

"We believe that the continued growth of the conference is evidence of its impact and importance in Pi Kappa Alpha," Orians said, "The sheer fact that almost half of our chapters send their presidents at their own expense to Memphis for training is justification for the conference's existence.

"In 1973 Pi Kappa Alpha took a chance with the creation of the SMC Conference, but looking back we can say the chance was worth it," he commented.

Jeff Minecci, the director of chapter services and educational programming, and the coordinator of this year's SMC Conference said, "An

unbelievable amount of information is given to the participants in such a short period of time that it is impossible for our chapter's leaders not to learn anything.

"The best part of the conference is the interaction that goes on between all of the presidents," Minecci said, "For most of the presidents, they have just entered the position, and it's a great opportunity for them to meet others from all over the country and discuss similar problems. If anything, it shows each president that he's not alone in his position. The majority of the chapters represented exhibited a thorough understanding of what makes a fraternity successful," Minecci noted, "I can see where future programming will need to take one step forward and expand upon the basics that have made our chapters strong."

ORDER FORM

SHOW YOUR PRIDE IN PI KAPPA ALPHA

— with an—

Elegant, Personalized Desk Plate
Engraved on a
Gold Anodized Aluminum Plate and
Mounted on a Solid Walnut Base

Mail Check and Order Form To:

C & S ENGRAVING
5126 WERLING DRIVE
FORT WAYNE, IN 46806



Print name (23 Spaces Maximum)

Type of script desired for name:

CONDENSED BLOCK
 CURSIVE

Check
 One

Class Year

Name of College _____
(Exactly as you want it engraved)

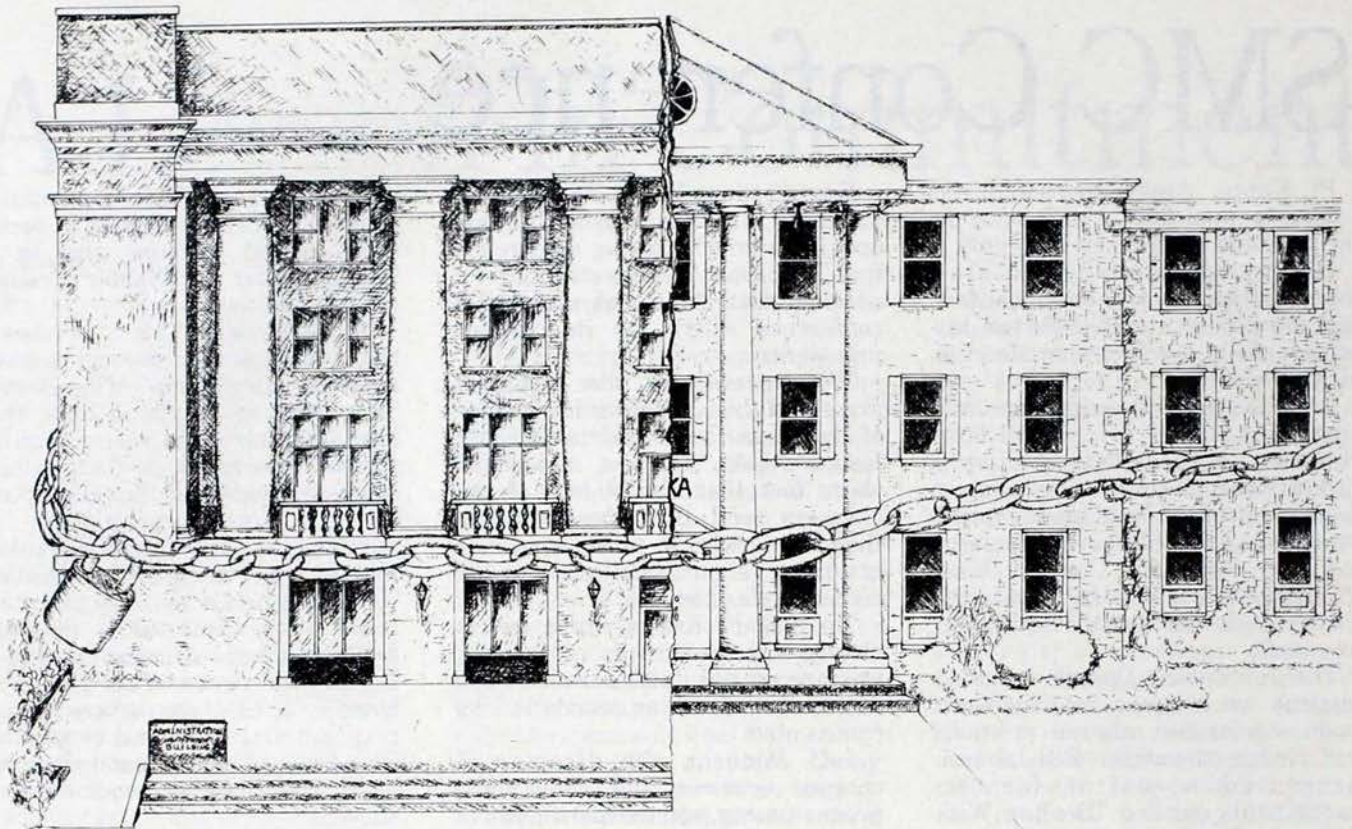
NAME _____

ADDRESS _____

CITY _____

STATE _____ ZIP _____

| | |
|--------------------------|---------|
| Price | \$16.75 |
| Ind. Res. add 5%..... | _____ |
| Postage & Handling | \$1.75 |
| Total | _____ |



Whose Chapter Is It Anyway?

by Dr. Larry Lunsford

***Is it the National
Headquarter's chapter,
or is it the
university's or
college's chapter?***

THE QUESTION of who has the sole responsibility or the final authority over a fraternity or sorority chapter on the host college or university campus has been discussed heavily over the past year among higher education professionals and those volunteers and professionals who work with the national Greek organizations. Undoubtedly, there are cases where either the host institution or the national headquarters believes it has final authority over an undergraduate chapter, but the current consensus seems to be that it's not *my* chapter, but *our* chapter.

The impetus for bringing this question into vogue appears to be the mounting court cases involving Greek-letter social organizations, be

they local or nationally-affiliated. America has become a litigious society, and everyone seems to be suing everyone for anything these days.

College administrators and national fraternity and sorority officials are finding themselves as parties of law suits varying from malicious hazing, sexual abuse, deaths, and alcohol-related incidences to discrimination. Because Greek organizations often are the single largest student groups on the campus, they are easily identifiable subjects of potential legal trouble. Law suits range in the millions of dollars in some instances.

Since the days of *in-loco-parentis* disappeared with the era of student unrest in the late 1960s and early 1970s, most college and university administrators have taken a hands-off approach in governing student organizations, particularly Greek organizations. Administrative intervention has basically been that of crisis reactionary, whereby officials take note of problems only after the fact. This attitude has disappeared entirely on some campuses, and it could become extinct if current trends continue to better define the relationship between the host institution and the national headquarters.

Does this represent a return to *in-loco-parentis*? The answer is that it is, in fact, a partial return to stricter regulations for Greek organizations and a closer control over the groups by the host institutions and perhaps by their national organizations. Colleges and universities have learned that they sometimes can be held responsible for what goes on with their Greek organizations — on or off campus. It varies from case to case, but most administrators are not willing to wait to find out if their case could be the exception (or the precedent).

New rules and regulations governing the actions of Greek organizations are appearing along with tough standards for recognition or registration as an official student organization. Many institutions as well as national headquarters have established minimum standards of operation whereby a chapter must perform above the standards in order to maintain its official recognized or registered status. These standards include such points as a minimum chapter size, community service requirements, financial requirements, and academic excellence. Chapters that fall below the standards normally are placed on probation for a set period of time and

given the opportunity to return to an acceptable level of performance. If that level is not met, then the chapter may no longer be allowed to operate on that particular campus.

The problem with setting minimum standards of operation or other restrictions on Greek organizations is that there is no consistency of such policies from institution to institution nor from national to national. The topic of the relationship between the host institution and the Greek

preservation, rather than toward updating chapter programs to keep them attune to higher education."

Schreck claimed that "nationals are always dealing with extinguishing the current fires. They are not as concerned with strengthening the system with viable programming." Kaegi noted that "in addition, many fraternity workers, especially the traveling chapter consultants, are seen by educators as public relations men for nations. The stereotyped

"Interface, a cold, coarse computer term, is the last word in surviving future shock. It's the first word in quieting restless educators . . ."

organization has again surfaced at professional higher education association meetings as well as the interfraternity associations' circles. Finally, representatives of the various organizations realized that everyone seemed to be pulling in different directions and have met in an attempt to reach an agreement on just what the relationship of the fraternity to the institution should be.

Such discussion on the relationship of the fraternity to the institution is not new to Pi Kappa Alpha. The topic was mentioned in a *Shield and Diamond* article as far back as the early 1900s. More recently, however, former National President Dr. William R. Nester and former *Shield and Diamond* Editor R. John Kaegi authored articles in the September, 1974 issue of the Fraternity's magazine regarding the need to *interface* between fraternities and institutions. Nester's article read: *Interface, a cold, coarse computer term, is the last word in surviving future shock. It is the first word in quieting restless educators who insist 'Greeks need us, but we don't need them.' The future lies in the merging (interfacing) of the educational objectives of fraternities and their host institutions.*

Editor Kaegi quoted former Indiana University Dean of Students Tom Schreck who said that, "higher education is moving away from the traditional fraternity. . . In so doing, their national organizations have expended greater effort toward

image of a consultant's visit to a campus fraternity advisor is described as a social visit where compliments are exchanged and the main topic is sports."

Kaegi agreed with Dr. Nester that an *interfacing* of the two entities is needed. "The action verb in the future of fraternities is *interface*. They must *interface* their ideals, their function, their grass roots programs with those of higher education," Kaegi said. "The *interfacing* process is like new mortar between two old separating bricks. To *interface* is to instill excitement where now we see sluggishness, in an era that demands action."

The year 1984 came and went with much discussion about Alvin Toffler's predictions in his classic, *Future Shock*. Kaegi and Nester may have been more correct in their predictions than Toffler may have been in many of his? The two saw a need for an *interface* between the fraternity and the host institution, and ten years later, educators seriously discussed and continue to discuss the topic.

The University of Pittsburgh, under the direction of Associate Director of Student Activities Dr. Terry Milani (an initiate of Gamma Sigma chapter) was one of the first institutions to tackle the problem head-on.

Dr. Milani spent months surveying institutions across the nation regarding their recognition and registration procedures for student organizations, particularly Greek

organizations. He compiled his findings as well as additional research into a 68-page document titled *A Report Regarding the Recognition of Student Organizations and the Relationship Between Institutions and the Relationship Between Institutions of Higher Learning and Social Fraternities and Sororities*. Since its publication, more than 150 colleges and universities have requested the document.

properly be termed role statements, or statements of support. Generally, the statements applaud fraternities for their contributions to the institution and campus life, substantiate their role in the development of their members, and pledge the continued support of the institution. Assuredly, the fraternity community welcomes the development of such support statements, and the institutions should be applauded for their

decision needs to be made as to whether or not the fraternity system is part of the infrastructure of the university and a formal and official component of its organization.

Do fraternities exist on our campuses as a matter of choice, an act of will and as part of the plan to provide for the education and development of our students? If so, the fraternities are part of us, of the same spirit, of the same purpose, and of the same body. This is the essential decision that needs to be made to accurately define the relationship between the institution and its fraternities."

Dr. Milani poses an additional question: **"How should the relationship between the institution and the national fraternities be defined?"** He responds: "Relying on the definition and concepts articulated earlier, the relationships can best be described as officially recognized. Inherent in this designation is a clear definition of the relationship. When chapters of national fraternities are recognized, the institution accepts them as formal components of its educational program, acknowledges their role in the fulfillment of the mission of an appropriate department, accepts

"Even where statements of the relationship between the institution and the fraternities exist, these statements do not explicitly define the nature or the relationship."

In his preface, Milani notes that his publication "is not meant to provide the definitive statement on recognition of student organizations and the relationship between fraternities and institutions. Institutions of higher learning have a good deal of discretion in defining the meaning of recognition and the relationship between the institution and its student organizations. It is the author's intent to provide a catalyst for the initiation of similar efforts."

Milani said that the relationship between the institution and its fraternities is based upon philosophical and legal constructs.

In one section, he poses the question: **"How is the relationship between national social fraternities and the institutions at which they are chartered defined in contemporary documentation?"** He responds: "The determination of recognition policies and procedures for each institution should be based upon the institutional definition of the relationship between the chapters and the institution, but in more than half of the sixty respondent institutions, no such statement existed.

"In these cases, however, the relationship is guided by IFC and panhellenic constitutions and by-laws, student codes of conduct, judicial boards, housing regulations, and in some cases, independent governing bodies. In these cases, what has been defined is little more than how Webster defines relationship: 'a state of affairs existing between those having relations or dealings.'

"Even where statements of the relationship between the institution and the fraternities exist, these statements do not explicitly define the nature or the relationship. The relationship statements should more

willingness to formally record their support of fraternity life. This is a step in the right direction, but falls short of clearly defining the fraternity's relationship with the institution.

What is being done when a charter granted by a national fraternity is recognized? At the present time, it seems little more than allowing an outside organization to operate on campus. The

University Claims It's Not Responsible

NORTHERN KENTUCKY State University is currently arguing in court that it lacks sufficient control over its campus fraternities to be held responsible for accidents that occur at fraternity functions. The university claims that since it does not control the social events of the fraternity, it cannot be held liable for anything that happens at those events, especially when they are held off campus.

A fraternity chapter at Northern Kentucky University sponsored a party at which beer was served. The party took place at a Veterans of Foreign Wars (VFW) hall. The beer was served by employees of the VFW hall which, under the licensing laws of Kentucky, was obligated to comply with the alcohol beverage laws of the Commonwealth of Kentucky.

A young woman in attendance at the party fell into a storm water drainage culvert behind the VFW hall. As a result of this accident and

personal injuries she claims she has suffered, the young woman sued the VFW Post. After more than a year of legal proceedings, the VFW Post filed papers to join as fellow defendants the fraternity chapter and the Northern Kentucky University.

In addition to the argument that there was a lack of legal relationship sufficient to make the university responsible for an accident at a Greek event, the university also argued that it could not be sued under the doctrine of sovereign immunity. This is an old doctrine which holds that one cannot sue a unit of government for negligence. Most states have abolished this doctrine.

Based upon these arguments the Court ruled that Northern Kentucky University has no liability for any accident that happened at this party.

— *Fraternal Law*, Nov. '84

responsibility for their actions, pledges the support of the university, and permits the use of its name.

"Without question, this proposition may cause consternation and defensiveness on the part of the fraternities and institutions alike. The fraternities will fear that such a relationship forebodes a return to *in-loco-parentis* and will result in a loss of autonomy. Institutions will fear having to accept direct responsibility for the actions of the groups and their members.

"Neither fear need be cause for reluctance to accept the proposition because the extra-curricular programs of institutions of higher learning have a rich and successful history of similar relationships. Student governments, campus newspapers, yearbooks, radio stations, professional societies, honoraries, choral groups, and club sports have gained ready acceptance as part of the official program of many institutions. These organizations play a vital role in campus life and are accepted, supported, and fostered as educational programs of the institution. So be it with fraternities.

"What then will be the net effect on fraternities and the institution as a result of such a policy? From the perspective of the institution, it will formally and in most cases accurately define what exists as the perceived relationship. The issue of accountability will be resolved, not assumed; fraternities will be directly responsible to the institution, and the institution will accept responsibility for the actions of its fraternities on and off-campus.

"For the fraternities it means institutional support, a favored position in the student society, and enhanced credibility. It reflects a mutual commitment, a concurrence in purpose that is reflected in a clear definition of respective rights and responsibilities."

Soon after Pitt released its document, the university made a firm commitment of support to its Greek system. It implemented a recognition policy, it implemented a dry rush, and it authorized the construction of a new fraternity housing complex which was completed last August and houses eight fraternities. The complex, which includes IKA's Gamma Sigma chapter, cost over \$5,000,000.

About the same time Dr. Milani was conducting his research, discussion of the relationship between fraternities and host institutions surfaced in the hierarchy of the National Association of Student Personnel Administrators (NASPA),

"For the fraternities it means institutional support, a favored position in the student society, and enhanced credibility. . ."

one of the more prestigious professional associations for those employed in student affairs administration. Ed Hammond, then NASPA president, appointed a task force comprised of student affairs professionals as well as national fraternity and sorority personnel to investigate the relationship and draft a statement for adoption by the NASPA Board of Directors. The task force, chaired by former IKA Executive Director Garth Jenkins, who is now dean of students at Stetson University, spent a year analyzing the problem before making a recommendation to the NASPA board.

In a memorandum to the NASPA board, Jenkins said, "Student affairs officers, as well as executives and volunteer officers of national fraternities and sororities, have their histories of relationships with each other, some of which each probably would like to forget as a method of dealing with the other and some of which are held in fond memory as having lasting educational value."

Jenkins continued, "While fraternities and sororities indeed are officially recognized or registered student organizations in some ways similar to other student groups, they do possess distinctive educational and structural features which distinguish them from these other organizations. Accordingly, our task force has taken the position that the institution's relationship with them is different and more complex. This relationship, therefore, requires further definition."

In stressing the need for a strong cooperation to exist between the institution and the national fraternity organization, Jenkins

said, "it is the strong position of the task force that the cooperative and mutually supportive relationships' emphasized in this paper must be an absolute necessity as each institution relates to the local and national fraternity officers and members in their common objective of providing a positive fraternity experience. If we can do this at the outset in developing policy papers such as this, then we can effectively work collaboratively on the other issues. Both must want to do this, however — institution and national fraternity alike — in order for us to fulfill this purpose. We no longer can speak of 'who controls the fraternity' as if a power struggle is at stake, as both have legitimate spheres of influence which should be respected."

The band wagon began to roll. Other national professional associations discussed and in some cases adopted relationship statements. Various national fraternity and sorority headquarters drafted statements, and universities and colleges formed committees to better define what the relationship is or should be.

Delta Gamma sorority not only commented on what the expectations of the fraternity should be, but what is expected of the institution as well. Delta Gamma adopted a statement which says it expects each host institution:

"to give support and services to which its students and student organizations are entitled by virtue of their registration and recognition with the institution;

"to preserve and protect the rights of the organization to peaceably assemble as granted under the Constitution of the United States;

"to preserve and protect the rights or privacy of the members and the organization as specified in the Higher Education Act of 1965; and

"to preserve and protect all other rights of the members and the organization as granted under other Congressional enactments."

Clarkson University in Potsdam, New York adopted one of the best statements that has appeared. It, too, not only outlines what is expected of the Greek system but lists the obligations of the university.

This however, presents a problem in that too many statements are appearing that say different things and do not complement each other sufficiently to allow for the interfacing of institution and fraternity.

In some cases, further anomosity could be created by challenging paragraphs that appear in the statements.

At the suggestion of the national Interfraternity Conference (NIC), an organization to which more than 50 national men's fraternities belong, representatives from that organization, NASPA, the National Panhellenic Conference (NPC), the Fraternity Executives Association (FEA), and the Association of Fraternity Advisors (AFA) met in Indianapolis the past January to discuss the relationship problem. NIC has a statement which pre-dates the NASPA statement, AFA and NPC have statements, and the FEA has a statement drafted and ready to present its members for adoption. After hours of discussing, arguing, and compromising, the ten representatives agreed on a statement that will be taken to the governing boards of each organization for approval.

Should all five governing bodies (and in some cases, the entire voting membership), approve the statement (or a revised statement should revisions be made), the door will finally be open for institution and fraternity administrators to agree on the role of the fraternity and the institution in relation to each other.

Regardless of the statements, however, it should be recognized that the various groups are sitting and talking together. They have realized

"The destiny of the university and the destiny of the fraternity are intertwined irrevocably. We have grown side by side. . ."

that they have mutual responsibilities and expectations. The fraternity professionals are well aware that the universities and colleges can exist without them, but they cannot exist without the institutions. Colleges and universities, with a few exceptions such as Colby and Amherst Colleges, have for the most part admitted that Greeks have been good for the campus and are willing to cooperate in assuring that the organizations continue to exist.

The fraternity chapter is *our* chapter. A mutual cooperative effort from both the institution and national fraternity is necessary to achieve an interface between the two entities.

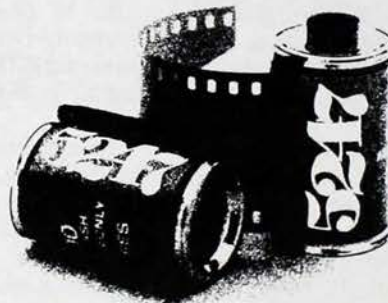
Perhaps it was said best by Betty Mullins Jones in her keynote address at the 1976 Bicentennial Interfraternity Celebration of the National Panhellenic Conference, the National Interfraternity Conference, the

Professional Panhellenic Association, and the Professional Interfraternity Conference:

"The destiny of the university and the destiny of the fraternity are intertwined irrevocably. We have grown side-by-side. We have not always agreed. We have not always been good to each other, but we have been good for each other. The story is not one of hero and villain, or right and wrong. Both colleges and fraternities have had their moments of idiocy and their moments of greatness. But like any successful marriage, this one has had more good times than bad, more love than hate, more working together than pulling apart."

Editor's Note: Dr. Lunsford also is a member of the NASPA Task Force, and along with Dr. Jenkins, represented NASPA at the Indianapolis meeting.

35mm Color



Prints and Slides from the same roll

Kodak MP film . . . Eastman Kodak's professional motion picture (MP) film now adapted for still use in 35mm cameras by Seattle FilmWorks. Its micro-fine grain and rich color saturation meet the exacting standards of the movie industry. With wider exposure latitude, you don't have to be a pro to get great everyday shots or capture special effects. Shoot in low or bright light from 200 ASA up to 1200 ASA (with our high speed 5294® film). Get prints or slides, or both, from the same roll. Enjoy the very latest in photographic technology with substantial savings.

Kodak 5247 and 5294 are registered trademarks of the Eastman Kodak Company. ©1984 Seattle FilmWorks

INTRODUCTORY OFFER

Rush me two 20-exposure rolls of your leading KODAK MP film—Kodak 5247® (200 ASA). Enclosed is \$2.00. I'd like to be able to get color prints or slides (or both) from the same roll and experience the remarkable versatility of this professional quality film. Limit of 2 rolls per customer.

NAME _____

ADDRESS _____

CITY _____ STATE _____ ZIP _____

Mail to: Seattle FilmWorks
500 Third Avenue West, P.O. Box C-34056
Seattle, WA 98124 4247

Offer does not include processing. Process ECN-II

Memorial Foundation Award & Loan Program

Chapter Library Award

The Memorial Foundation of Pi Kappa Alpha offers a \$50 grant to purchase of reference books, classics and novels for chapter libraries that surpass the all-men's average for two consecutive semesters or terms.

Phi Beta Kappa Award

The Memorial Foundation will pay \$25 toward the membership fee for any member of Pi Kappa Alpha tapped into the national scholastic honorary Phi Beta Kappa.

National Powers Award — \$1,000

At the conclusion of each academic year, the Foundation solicits nominations from all chapters for the most outstanding undergraduate. Special consideration is given to

graduating seniors. The basic qualifications for nomination include academic excellence, leadership on campus, commitment to the community and involvement within his chapter of Pi Kappa Alpha. The winner receives a \$1,000 scholarship. The five men who are runners-up each receive a \$250 scholarship. A certificate is provided to those outstanding undergraduates in the Pi Kappa Alpha Fraternity who are nominated for the Powers Award and meet the minimum standards set by the scholarship committee.

Chapter Scholarship Award

Alumni from numerous universities sponsor annual scholarship awards for their respective chapters. There are two awards — a leadership award and an academic award. The designated chapters may receive one

or more of these awards depending on the number of sponsors. These awards are administered by the Memorial Foundation staff. Several nominees may be submitted, but only one man is chosen for each award. The nominees must be full-time students in good standing with the university and the chapter, and they must have completed 30 approved credit hours. The recipient will receive a cash scholarship.

Memorial Foundation Loan Program

Through its loan program, the Pi Kappa Alpha Memorial Foundation provides funds for individuals who are seeking a college education and find it impossible to continue their education without financial assistance. Funds for loans come solely from alumni contributions.

MISSING PERSONS BUREAU

If you know the addresses of any of these "lost" members, listed here by school, please notify Pi Kappa Alpha Memorial Headquarters, 577 University Boulevard, Memphis, Tennessee 38112.

Austin Peay State

Kevin Carter

Bowling Green State

Douglas Gordon Bugie

East Texas State

Larry Earl Nobles

Ferris State College

Gary Francis Findlay
David Roy Hafer
Danny Charles Spear

Florida State

Clayton Bullock
Jesse Charles Vance

Georgia

Nicholas Alan Daunt
Nick Anthony Delucco

Indiana State

Brian Richard Moore

Kansas University

Phillip Hatch

Kentucky

Stephan Anthony Clark
Gregory A. Reusch

Linfield College

Edwin Edward Edinger, II

Louisiana State

David Powell

Memphis State University

Richard T. Edwards
Wayne S. McDonald

Millsaps

Robert C. Young

Mississippi

Robert Keith Gordy

North Dakota

Val Daran Hardy

Northwestern

Cory V. Clayton

Oregon

Frederick Roy Steen

Pembroke State

Charles Dwight Hewett

Pittsburgh

Jerry Ralph Bittner

Southeast Missouri State

Dan G. Picarella

Southern Methodist

Phil Scarborough

Southern Mississippi

William Ronnie Harris

Tennessee, Knoxville

William Howard Jerles

Texas, Arlington

William Paul Arndt

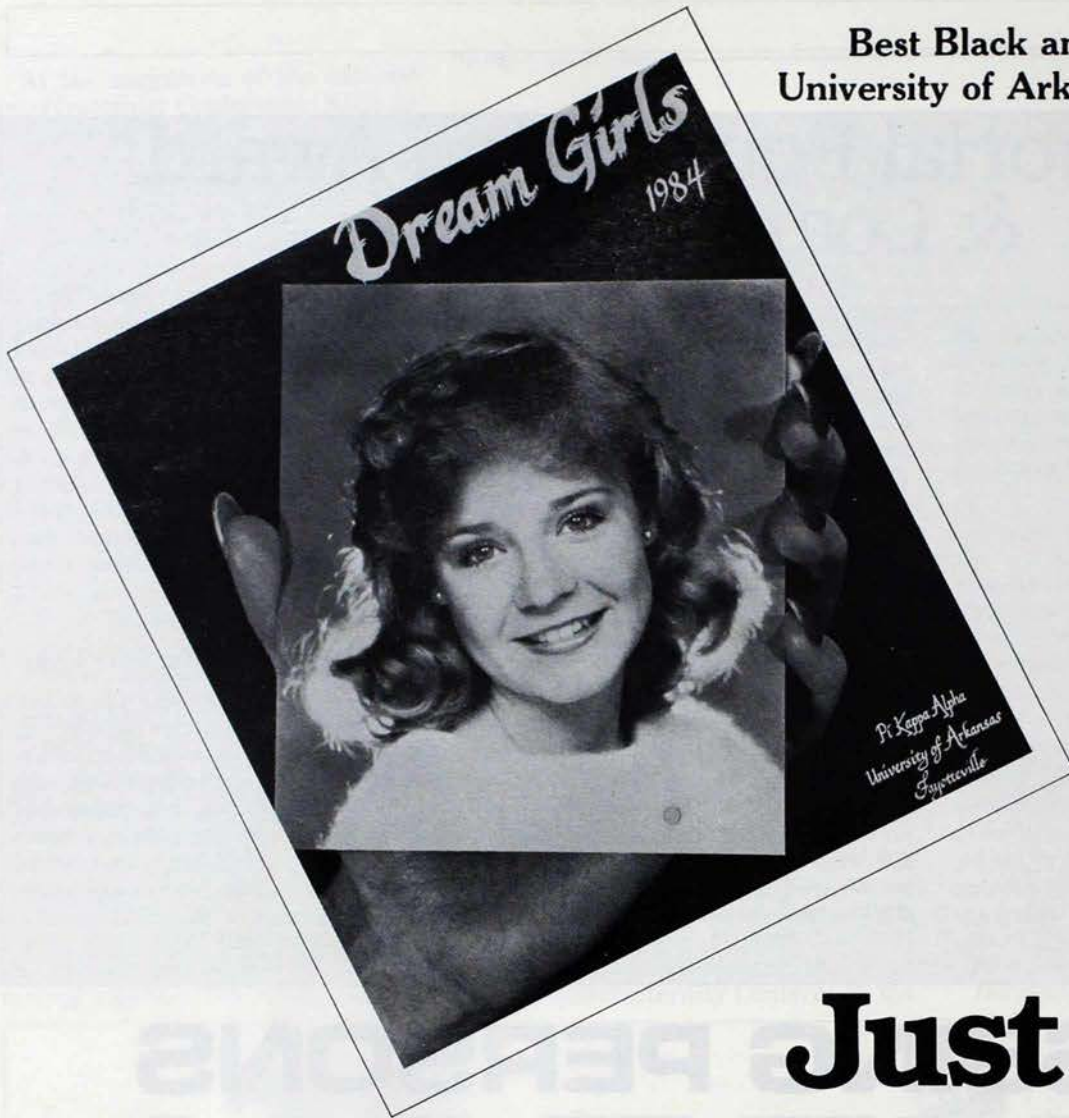
Washington State

William Lewis Kelleher

Wayne State

Paul Louis Quaglia, Jr.

Best Black and White Cover
University of Arkansas (Alpha Zeta)



Just Love Those Calendar Girls

DELTA TAU chapter at Arizona State University takes the honors as the best overall calendar for 1984 with its twenty-fourth edition of *The Women of ASU*. Finishing close behind in second place is Zeta Omicron at California, Northridge.

Somehow, it seems only fitting that the chapter that originated the idea of the Dream Girl calendar take the top honors once in a while.

According to the chapter, the 1984 edition of the calendar was distributed in Arizona, Chicago, Minneapolis-St. Paul, Canada and Italy.

Since 1958 the calendar has gone through many changes and each year the proceeds that the chapter receive are donated to a scholarship fund for ASU students. The members of Delta Tau are proud of their long tradition, and by the time this article appears they will be busy distributing the

chapter's twenty-fifth anniversary edition.

Many chapters have borrowed the calendar idea over the years and each year many more are jumping on the band wagon. This year marks the ninth anniversary of the *Shield & Diamond's* calendar competition. Since 1975 the magazine has featured the calendars in its March issue. Of course, since that time, the magazine has received mixed reviews on the competition also.

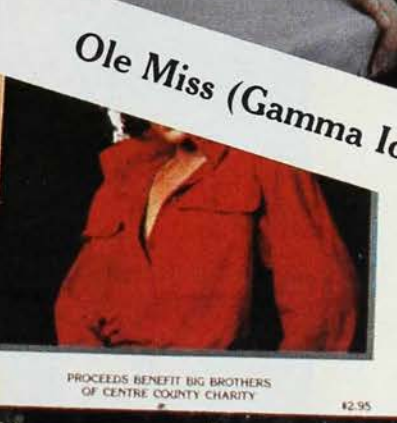
In 1984, seventy-five calendars were submitted to the competition. That means that nine hundred women participated with Pi Kappa Alpha chapters across the country. Unfortunately, not all of the chapters that put out a calendar in 1984 were successful. For many chapters, it meant serious financial problems because of advertisements that were never sold, and for some, poor

printing quality resulted in calendars that couldn't be sold.

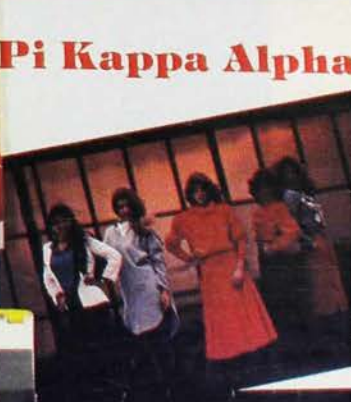
However, any chapter that produces a calendar can tell you that if it's done properly the publicity that the finished product brings is well worth all the work. They will also be quick to add that in order to have a successful publication it must be done in good taste.

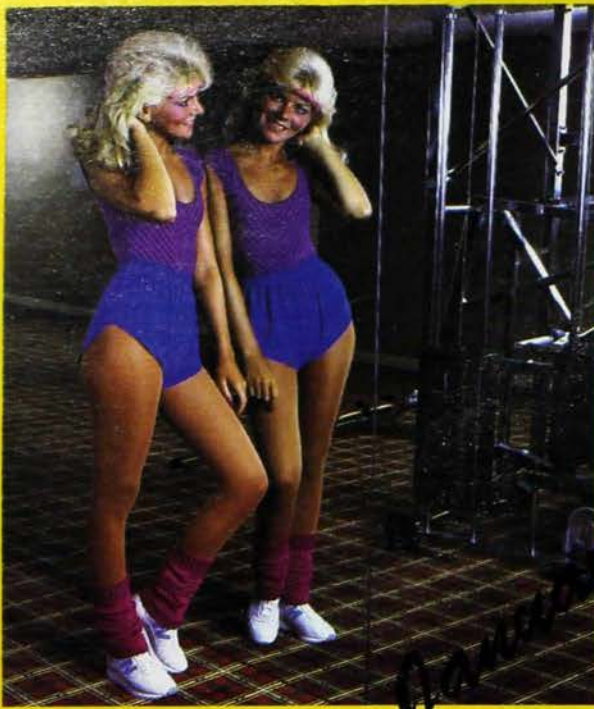
One significant change that leaps out during the competition is the remarkable improvement of the calendars from year to year. Chapters have gone from putting out all black and white calendars to complete four color publications. It has almost gotten to where black and white calendars are no longer in vogue. This also points to the fact that some chapters are operating with calendar budgets of over \$10,000.

It is obvious that Pi Kappa Alpha calendars have become BIG business.



men of ASU





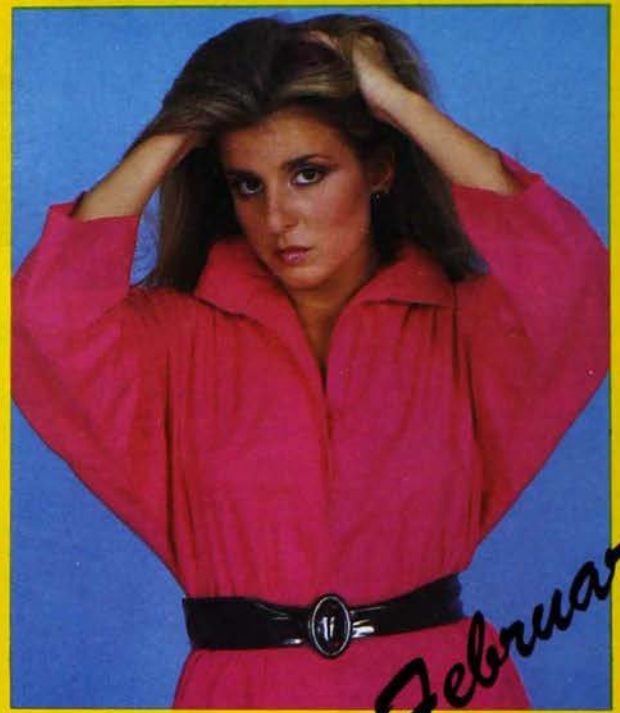
January

California, Northridge (Zeta Omicron)

Runners up:

Alabama (Gamma Alpha)

Arizona State (Delta Tau)



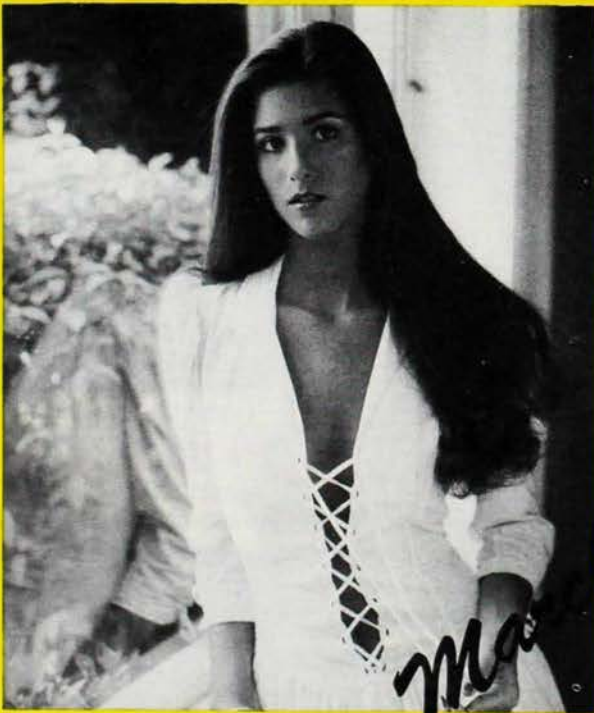
February

California, Northridge (Zeta Omicron)

Runners up:

North Alabama (Theta Alpha)

Texas Tech (Epsilon Gamma)



March

Arizona (Gamma Delta)

Runners up:

North Alabama (Theta Alpha)

Arkansas (Alpha Zeta)



April

Auburn (Upsilon)

Runners up:

Arkansas (Alpha Zeta)

Mississippi State (Gamma Theta)



California, Northridge (Zeta Omicron)

Runners up:

Arizona State (Delta Tau)

Arkansas (Alpha Zeta)



Arizona State (Delta Tau)

Runners up:

California, Northridge (Zeta Omicron)

Texas Tech (Epsilon Gamma)



Arizona State (Delta Tau)

Runners up:

Texas Tech (Epsilon Gamma)

Alabama (Gamma Alpha)

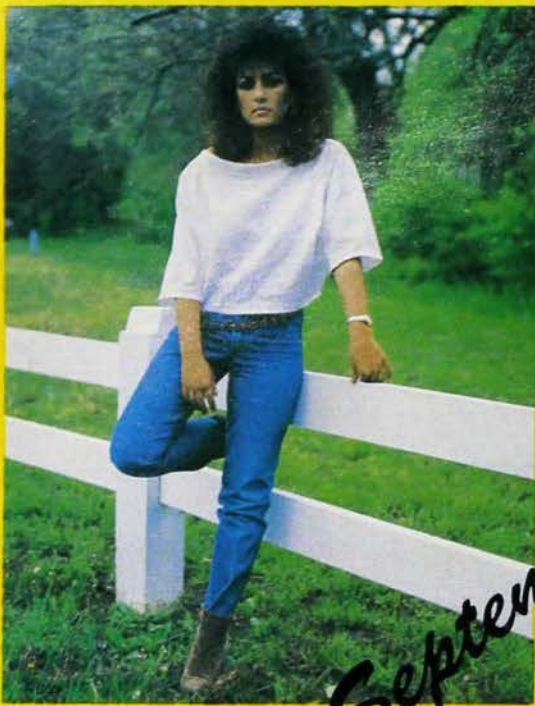


Texas Tech (Epsilon Gamma)

Runners up:

Kentucky (Omega)

Arizona State (Delta Tau)



September

Mississippi State (Gamma Theta)

Runners up:

Purdue (Beta Phi)

Middle Tennessee State (Eta Zeta)



October

North Alabama (Theta Alpha)

Runners up:

Auburn (Upsilon)

Arizona State (Delta Tau)



November

Arkansas (Alpha Zeta)

Runners up:

Utah (Alpha Tau)

Arizona State (Delta Tau)



December

Murray State (Epsilon Lambda)

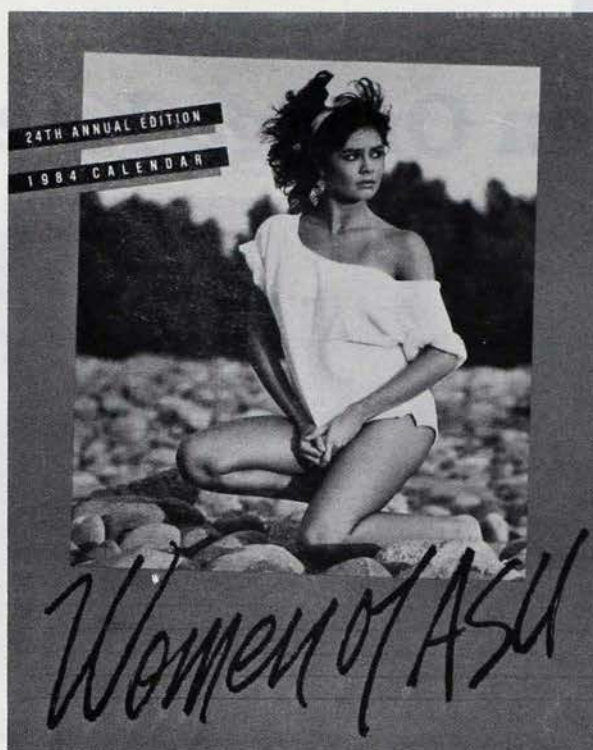
Runners up:

Sacramento (Theta Iota)

California, Northridge (Zeta Omicron)

HONORABLE MENTION

Alabama — *Gamma Alpha*
 Alabama, Huntsville — *Theta Pi*
 Angelo State — *Eta Epsilon*
 Arizona — *Gamma Delta*
 Arkansas State — *Delta Theta*
 Austin Peay — *Eta Tau*
 Baylor — *Theta Nu*
 Bradley — *Delta Sigma*
 Central Florida — *Eta Phi*
 Delta State — *Zeta Beta*
 Drake — *Delta Omicron*
 East Tennessee State — *Epsilon Zeta*
 East Texas State — *Theta Xi*
 Eastern Illinois — *Zeta Gamma*
 Eastern Kentucky State — *Zeta Tau*
 Georgia State — *Epsilon Nu*
 GMI — *Zeta Alpha "A"*
 Houston — *Epsilon Eta*
 Illinois — *Beta Eta*
 Indiana — *Delta Xi*
 Indiana State — *Theta Omicron*
 Kansas State — *Alpha Omega*
 Kentucky — *Omega*
 Lamar — *Epsilon Kappa*
 Lehigh — *Gamma Lambda*
 Loyola Marymount — *Theta Eta*
 Missouri — *Alpha Nu*
 Missouri, Rolla — *Alpha Kappa*
 Montevallo — *Theta Beta*
 Murray — *Epsilon Lambda*
 North Carolina — *Tau*
 North Dakota — *Delta Rho*
 North Texas State — *Epsilon Delta*
 Northeast Louisiana — *Eta Omicron*
 Northern Kentucky — *Eta Rho*
 Ole Miss — *Gamma Iota*
 Oregon State — *Beta Nu*
 Penn State — *Beta Alpha*
 Presbyterian — *Mu*
 RPI — *Gamma Tau*
 Sacramento — *Theta Tau*
 South Carolina — *Xi*
 Southern Mississippi — *Delta Mu*
 Tennessee Tech — *Theta Upsilon*
 Texas A & M — *Theta Theta*
 Tulsa — *Gamma Epsilon*
 Utah — *Alpha Tau*
 UT, Chattanooga — *Delta Epsilon*
 Virginia Tech — *Epsilon*
 West Georgia — *Eta Sigma*
 Winthrop — *Theta Sigma*



TOP TEN OVERALL CALENDARS

1. **Arizona State University (*Delta Tau*) 23.3**
2. California, Northridge (*Zeta Omicron*) 23.17
3. Texas Tech (*Epsilon Gamma*) 22.9
4. Arkansas (*Alpha Zeta*) 22.3
5. Auburn (1984-85) (*Upsilon*) 22.1
6. Auburn (1983-84) (*Upsilon*) 21.7
7. Purdue (*Beta Phi*) 21.5
8. North Alabama (*Theta Alpha*) 21.3
9. Middle Tennessee (*Eta Zeta*) 21.2
10. Mississippi State (*Gamma Theta*) 21.02

TOP TEN COVERS

1. **Ole Miss (*Gamma Iota*) 24.9**
2. Kentucky (*Omega*) 24.8
3. Auburn (1983-84) (*Upsilon*) 23.8
4. Southern Mississippi (*Delta Mu*) 21.7
5. Auburn (1984-85) (*Upsilon*) 21.4
6. Mississippi State (1983-84) (*Gamma Theta*) 21.4
7. Arizona State (*Delta Tau*) 21.1
8. Purdue (*Beta Phi*) 21.0
9. Mississippi State (1984-85) (*Gamma Theta*) 20.6
10. Southern Mississippi (*Delta Mu*) 20.5
11. Virginia Tech (*Epsilon*) 20.4

Alpha Omega Keeps Its Promise

By Tim Fitzgerald

BRUCE COOK held his brothers of Alpha Omega chapter to a promise they made him last year.

You see, Bruce, a junior in business administration at Kansas State University, was a passenger in a car returning from a party in late August of 1983. The car traveled down a winding and unpaved road and the driver drove off of the road at an unmarked turn. The car plummeted off of a short cliff tossing Bruce out of the window.

He doesn't remember anything about the accident, but it left him paralyzed from the mid-stomach down and confined to a wheelchair. While recuperating, his brothers from Alpha Omega chapter promised him whenever he was ready to return to school they would make the house accessible to his wheelchair.

"I was in an acute-care hospital for two months and spent another two months at a rehabilitation institute, during which time I had three operations" Cook remembers, "I made my decision to come back to school during the four months I was in the hospital."

Boredom overcame Bruce during the spring and summer semesters of 1984, so he took some classes at a local county community college, but he still wanted to return to Kansas State and Pi Kappa Alpha in the fall.

At the time of the accident, he was pledging Pi Kappa Alpha. During the spring following the accident, a few members went to Kansas City and brought him back to the house so he could be initiated.

John Crowl, president of the chapter, says he will never forget the initiation, "There was something very special about the initiation. It was a very moving and touching ceremony."

Following the ceremony, Bruce announced he was going to return to the university and to the Pike house in the fall.

"Knowing the struggle that Bruce went through following the accident, it gave us a great feeling to know he would be able to come back to school and live in the house," Crowl says.

The members of Alpha Omega and their alumni immediately started to make plans for Bruce's return. Prior plans for renovating parts of the



Bruce (center) is back enjoying Pi Kappa Alpha and his brothers' company once again.

house were put-off indefinitely and money was channeled towards making the house accessible for a wheelchair.

The Pike house, a split-level building, was built in the mid-1950's with no concern for handicapped accessibility, so the task was not an easy one.

Throughout the summer of 1984, workers pieced together a plan which made the house accessible to Bruce. Railings were cut out on the back porch where a concrete ramp was built, and a \$2,200 stair-lift was put in place.

The bathrooms at the house were also inaccessible, so lower sinks were installed and the showers were reconstructed to include a shower bench and a hand-controlled shower hose.

"It's an accessible house now and I have no problem getting around" Bruce says, "I remember lying in the hospital and the guys saying just come back we'll get the house ready for you, and they did."

"I had little problem re-adjusting, which I attribute to my family and my Pike brothers."

"It was great being back with the guys. They're awesome and, they usually find a way to keep me busy," he says.

Crowl said the way Bruce handled the accident was a direct reflection upon his character.

"Bruce is a very strong-willed and courageous individual. If you put yourself in his situation you can only hope that you could come through it as well as he did," Crowl comments.

Bruce has tried his best not to let the accident change his life, but he

misses Sunday afternoon football games with friends at the house. Athletics has always been his first love. While a senior in high school, he was named as a Kansas Football Big Brother All-Star. The accident hasn't changed his love for sports, though.

"The sports I participate in have changed, but I still love the competition," he notes.

With the assistance of a specially designed, light-weight wheelchair, he is able to stay in shape by participating in what wheelchair athletes call "running". Bruce averages between 40 to 50 miles a week.

"Whenever a wheelchair athlete goes out for a spin around the block, we call it running. It sounds dumb to call it rolling," he jokes.

"The farthest I've gone is 10 kilometers. I placed second in the 10k wheelchair division at the Macy's Marathon. My goal is to someday run in a marathon," he says.

"I also enjoy playing racquetball with a friend who is also confined to a wheelchair."

"Before the accident I took things for granted," Bruce comments, "You don't realize what you've got until it's gone. I just look at life a little more special now. Really, the only thing I can't do is walk. I try to keep that attitude."

After a short adjustment period the Pikes look at Bruce as just another member, but in some ways he is a very special brother.

"The guys respect Bruce," Crowl says, "He exemplifies courage, pride and determination. We're proud that he's our fraternity brother."

The Dirty Dozen

by Bill McCartan

WHILE MOST of the other students were finishing up their final exams and packing to go home for the holidays, on Saturday morning, December 15, the scene at the Pike house was a little different. Many of the members were gathered in the front of the house helping twelve of their brothers get ready to go to Jackson, KY.

For those dozen Pikes the week before Christmas was going to be a bit different than in years past. This group was getting ready to take a trip which they had been planning for months.

This was going to be a philanthropic trip which was organized by chapter community service co-chairman Hal Kaftan and Dan Wiederin. In the next week these Theta Lambda brothers were going to visit one of the pockets of poverty which exist in the United States and help a needy family renovate their house for the winter.

Dan and Hal had made a similar trip, organized through the Creighton Community Service Organization, the previous Christmas. Having enjoyed the experience, and realizing



Theta Lambda members making repairs.

the possibilities for a tremendous chapter opportunity, Dan and Hal brought the idea up at September chapter meeting where it was greeted with great enthusiasm. In fact, the response was so great that in the end, not all the brothers interested were able to go.

The entire week was spent with one family renovating their house, a complete project in itself. Even after spending an entire week on that house, the brothers were only able to slightly improve the abject living conditions which its residents faced.

During their stay they winterized the house, cut wood for its stove and heater and dug a drainage ditch to alleviate the family's annual flooding problem. The brothers did plenty of work, but there was plenty of work left to be done.

After digging drainage ditches, pounding nails into particle board insulation, and chopping firewood all day, a hot shower would have been the ideal thing. However, that was not to be, sadly because the log shanty where they stayed had no running water, let alone hot, and the only showers they saw during the week were in the form of rain. A small, muddy creek provided a place to brush teeth and wash faces. Needless to say, the end of the week found twelve rather foul-smelling Pikes.

The end of the week came just in time because tolerance for the smell of one's self, sleeping on cold, hard floors, and worst of all, bologna, a week long staple, was running short.

When Saturday the 22nd came, the twelve Pikes gave the family a greatly appreciated Christmas gift of some basic groceries with what was left of their money before piling into their vehicles to head home.

According to Mike Moreland, the chapter's president, the family was going to treat them to a goat dinner before they left. However, when the wife mentioned that the goat had died a few days earlier because of a disease the group gracefully declined dinner claiming that they needed to get a jump on the long ride home. . .

When they finally did arrive home they reported that their parents were glad to see them, but only from a distance.

Despite all of this, the brothers are only too ready to recommend the trip to any other chapter interested in a similar project.

EDITOR'S NOTE: If chapters are interested in adopting this project they should contact Grassroots Development in Jackson, KY, the Glenmary Missionary or Theta Lambda chapter. It is an experience well worth the effort.



"Home" for the week.

Diamond Anniversaries Marking Pi Kappa Alpha's Decision To Expand Above The Mason-Dixon

*Alpha Xi and Southland Hall
Alumni Association are planning
to celebrate this momentous occasion.*

by Dr. Jerome V. Reel, Jr.

1984, 1985, and 1986 are bringing Pi Kappa Alpha three extremely significant Diamond Anniversaries. The Diamond Anniversary of 1984 is the significant New Orleans Convention of 1909; the Diamond Anniversary of 1985 is the founding of the University of Cincinnati chapter (Alpha Xi); and the 1986 anniversary is the anniversary of Alpha Xi chapter's Southland Hall Alumni Association, perhaps the oldest continuing alumni association in Pi Kappa Alpha.

Certainly, important conventions have come and gone. The history of Pi Kappa Alpha, *The Oak*, suggests that there are a number of these conventions, including the 1889 Hampden-Sydney Convention, the 1909 New Orleans Convention, the 1933 Troutdale Convention, and the 1960 Washington Convention. In some ways each of these conventions has been important because of the liberating spirit that each one brought to the Fraternity.

Consider New Orleans. For twenty years Pi Kappa Alpha, at convention, had debated the Hampden-Sydney Convention decision that the Fraternity confine itself strictly to colleges South of the Mason-Dixon Line.

From that point forward, conventions debated that as the major issue. In Richmond in 1896, the vote ended in a deadlock as to whether to undertake northern expansion.

By the Charlotte Convention of 1901, the Fraternity's first historian Freeman Hart wrote, "expansion became the dominant note of the Fraternity's enthusiasm, (and) the question of territorial boundaries was again a persistent one." By 1904 a number of chapters were complaining that because Pi Kappa Alpha was not in the north, students who came to their institutions from the north would not join the Fraternity. That year the Fraternity approved expansion into the southwest, which may not have been truly an extension, but was considered to be a victory for expansionists.

Again, in Chattanooga in 1905 and in Richmond in 1907, efforts were made to extend the Fraternity and, in fact, in Richmond the Fraternity agreed to expand in the region west of the Mississippi River. It would be up to the New Orleans Convention to see the end to this sectionalism.

A whole day was spent debating the motion with voices being heard from Tennessee, Missouri, Virginia, and throughout the entire Fraternity. When the vote was finally held, 19 chapters voted to remove sectionalism and six voted no. Pi Kappa Alpha had become a truly national fraternity in constitution, but would it be so in deed?

It is the Second Diamond Anniversary of the first chapter above the Mason-Dixon Line. That chapter would be placed at the University of Cincinnati, one of the oldest schools in the midwest. The University of Cincinnati was for many years the largest of the metropolitan universities and colleges in the United States. The school had a distinguis-



Alpha Xi's chapter house at 3400 Brookline Avenue on the University of Cincinnati campus has been "home" for chapter members and alumni since 1947.

hed reputation almost from its beginning as it was known to have produced a great number of theologians, scientists, and philosophers in the nineteenth century. And it was there at the University of Cincinnati that on May 30, 1909 four men, Frank Stanton Gavin, Elmore Curt Walthers, Frederick Daniel Lotter, and A. Ellis McNelly, determined to establish a new fraternity at the university.

It would be by no means the oldest fraternity on the campus. Sigma Chi had been the national pioneer there in 1882 and since that time, chapters of Sigma Alpha Epsilon, Beta Theta Pi, Phi Delta Theta, and Delta Tau Delta had been established.

The new fraternity, Epsilon

Gamma Chi, chose its colors as red and white and its flower as the gold standard tulip. Shortly thereafter, a member of the Georgetown (Kentucky) chapter of the Fraternity persuaded the members of Epsilon Gamma Chi to petition Pi Kappa Alpha for membership.

The usual investigations were held and on May 17, 1910, fifteen men were initiated into Pi Kappa Alpha at the University of Cincinnati. The decision rendered at the New Orleans Convention had finally come to life.

But, so it is with many chapters that are founded as local fraternities by men who wish to seek a better or a different way from existing campus life. These fraternities quickly

become chapters of the large national fraternities, and some of them, unfortunately, never reattain the high point of the moment of their chartering. Not so with Alpha Xi.

The chapter's history serves as a continual reminder and inspiration to the Fraternity of what a chapter could mean. Consider the immediate dedication of the alumni of the Cincinnati chapter when they established on August 11, 1911, the Southland Hall Alumni Association. Established as a non-profit organization, it was dedicated to the principles of developing property and guaranteeing the legal status of the chapter.

Alumni purchased shares in the association and directors and officers

were elected. By 1912 the Association had rented Alpha Xi's first house; and by 1914 purchased its first house.

Although there were setbacks in World War I, the house continued to be improved, and the chapter continued to grow. Even during the Depression, the chapter and the alumni association worked carefully through the problems coordinating rush and maintenance and improvement of the house.

World War II found the association renting the house briefly to a sorority, but by the end of World War II, the alumni had come to the conclusion that a new house for Alpha Xi was needed.

The new house was purchased in 1947 and was considered to be one of the more magnificent homes of Cincinnati. Built in 1895 of limestone, it was paneled throughout, had a large basement, beautiful entertaining rooms, and much space to be turned into dormitories.

But good houses don't guarantee good chapters. The late 60's and early 70's found a decline in membership in most chapters of most fraternities around the country as hostility to the long-term commitments that fraternity membership requires seemed to be the order of the day



Immediate past national president, Joseph Turner (right) presents Southland Hall Alumni Association President Jack Gunderman the William R. Nester Award for being the Fraternity's outstanding alumni association for 1983. This was the eighth consecutive time that the association received the award.

amongst many college students. Certainly Alpha Xi was fortunate to have had the young men join at that time and who maintained the principles of the Fraternity, but it was just as fortunate to have Southland Hall, which kept the faith

with its younger brothers through those days as it had done through two wars and the Depression. Today, the magnificent home serves as a monument to the dedication of alumni to the chapter.

There has been at the same time the same dedication of the chapter to its alumni. From the early days of World War I, chapter publications such as, the *Mummy of Alpha Xi* was sent out to alumni around the world.

But certainly in its own way, the most notable characteristic of Alpha Xi chapter and its alumni have been their dedication to other things. Alpha Xi has long been noted for its service to the University of Cincinnati. In fact, that was one of the principles upon which the local fraternity, Epsilon Gamma Xi had been formed. Over the years, the men of Alpha Xi have been prominent in their membership in the various service and honorary organizations of Cincinnati.

Nobody can deny the contributions that the men of Alpha Xi have made to the nation. The house emptied for World War I and it was used for housing army officers at Cincinnati, and it was laughingly said that issues of the Alpha Xi *Mummy* certainly told good stories about privates who became sergeants, sergeants who became captains, and captains who



This 1948 photo shows the spacious and beautiful sitting room which is located to the left of the reception hall in the chapter house.

became generals. During World War II Alpha Xi showed its dedication to the nation.

Conspicuous as well, has been Alpha Xi's dedication to Pi Kappa Alpha nationally. It's not enough to note the fact that the chapter itself has on a number of occasions been a Smythe Award winning chapter, that its alumni association has on a number of occasions received top honors as the outstanding association in the Fraternity, and that the rolls that have been played by Alpha Xi men in districts and regions has always been strong. Consider the men that Alpha Xi has offered to the National Fraternity.

Herbert Shaffer, long-time stalwart of the alumni association for Alpha Xi served as grand alumni secretary from 1916 to 1920. He had been one of the inspirations behind the Alpha Xi housing plans. Between 1950 and 1952 Earl W. Wagner served in roughly the same capacity as national alumni secretary.

Nineteen hundred and fifty-six marked the beginning of a long career for a prominent Alpha Xi member, William R. Nester, who served until 1958 as national secretary. After a two-year hiatus, Nester was selected educational advisor, a role he fulfilled faithfully until 1968. Then again after a hiatus of two years, he was appointed as university relations director, a position he held until 1978.



Yaeger

Nester

Or consider Ralph Yaeger. From 1957 to 1959, he served as pledge training director, and was instrumental in the development of the first *Garnet and Gold*. Yet, that was not his first service because from 1952 to 1953 he had been a national vice president, and in 1953 succeeded to the national presidency upon the untimely death of Harvey T. Newell in a plane crash.

Then there was Glenn Weissenberger who served from 1970 to 1972 as national vice president only to return in 1976 as national counsel, a position he held until 1980. Or Ted Grofer who served as director of public relations from 1965 to 1970 and since 1982 has been serving as a national vice president. Or Gary Menchoffer who served as a national



This staircase in the Alpha Xi chapter house is located at the end of the reception hall. The staircase has handcarved Newel posts which were designed and executed in Europe. Not much has changed since this photo was taken in 1948, however, the grandfather clock has been re-located to the center of the reception hall.

vice president from 1980 to 1984. Or consider William W. Banks, national undergraduate vice president (one of the first from 1970 to 1971).

William Nester remains one of the exemplary examples of service for not only did he serve in the already mentioned roles, but he headed innumerable committees for the Fraternity over its development in the 60's and 70's. In 1968 at the Richmond Centennial Convention, he was elected as one of the national vice presidents and then in 1978 was elected president of Pi Kappa Alpha.

What a distinguished record of

service these men of Alpha Xi brought to the National Fraternity.

From those early days of 1910 through the dedication of the undergraduates to the high principles first of Epsilon Gamma Chi and then for 75 years to Pi Kappa Alpha and with the dedication of the alumni to the strength and building of the chapter, Alpha Xi chapter of Pi Kappa Alpha has continued to remain a force of good for Pi Kappa Alpha on the Ohio River.

Congratulations and happy birthday to this Diamond Anniversary chapter.

Owens Is Honored During Bicentennial Celebration

HUBERT B. OWENS (Alpha Mu '30), dean emeritus of the University of Georgia School of Environmental Design and an internationally recognized leader in landscape architecture, recently received a sterling silver Bicentennial Medallion.

The medallion, is the university's highest form of honor in its Bicentennial year.

University President Fred Davison presented the medallion, citing Owens for "your tireless efforts in behalf of beautification, your assistance to garden clubs, your leadership in your profession, your contributions to the university, your unfailing interest in students and your high standards as an educator, practitioner and humanitarian . . ."

Davison said it is appropriate that Owens be recognized in the Bicentennial year because his "achievements and contributions merit him a place of significance in this institution's 200-year history."

Owens was the founding dean of the School of Environmental Design, building the school from one landscape architecture course that he started teaching in 1928 into a full program of study that became a department and grew into the school in 1969.

Owens has been president of the two most important organizations in his profession — the American Society of Landscape Architects and the International Federation of Landscape Architects. He was also president of the ASLA Foundation and the U.S. Inter-professional Commission on Environmental Design.



Pikes serving in the 1985 Indiana General Assembly. (left to right) State Representative Richard Wathen (Theta Kappa, Indiana University Southeast), State Senator William Dunbar (Theta Omicron, Indiana State University) and State Senator Ed Pease (Delta Xi, Indiana University). Ed Pease is also one of Pi Kappa Alpha's Supreme Council national vice presidents.

He was the first landscape architect for the Georgia Highway Department and the first chairman of the state board that oversees licensing of landscape architects.

In 1958, Owens developed a series of study courses to help non-professionals understand the basics of landscape design. More than 10,000 people have completed the courses.

For half a century, Owens has assisted garden clubs in Georgia through speeches, publications, training courses and personal advice. He served on the boards of both the Garden Club of Georgia and the National Council of State Garden Clubs.

"More than 500 students graduated in landscape architecture during his active teaching years," Davison noted, "and many of those students today hold prominent positions, a fitting tribute to his influence and his inspiration."



Hubert Owens (Alpha Mu '30) Acknowledges Bicentennial Medallion.

compiled by Copy Editor Karen Null

ALABAMA: **Robert H. Carpenter '50** (2730 Camelia Dr., Columbus, GA 31906) was recently elected deputy general counsel and vice president, Legal Division of the Federal Home Loan Bank of Dallas.

ARKANSAS: **Jerry L. Russell '58** (P.O. Box 7281, Little Rock, AR 72217) was presented the Harry S. Truman Award for outstanding contributions to the study and preservation of civil war history. He is national chairman of the Civil War Roundtable Associates and president of the Arkansas chapter.

ARKANSAS STATE: **James Mason '48** (RR 15, Box 295, West Terre Haute, IN 47885) along with his wife Amy, won the Ted Falls Memorial Environmentalist of the Year Award.

CAL. STATE NORTHRIDGE: **Scott Willens '74** (23134 Bigler St., Woodland Hills, CA 91364-2707) on the 25th of November 1984 became the father of twins. He is the controller for Carole, Inc.

CENTRAL ARKANSAS: **Mel Blackwood '72** (P.O. Box 561, Conway, AR 72032) has been promoted to regional sales manager at Arkansas Blue Cross and Blue Shield, Inc. He will manage marketing for the company in the northeastern section of Arkansas.

EMORY: **Stephen M. Filres '74** (1382-3 Normandy Dr. NE, Atlanta, GA 30306) after four years overseas, has returned to the United States to work for Coca-Cola as the financial services coordinator for Europe and Africa providing a financial information liaison between field locations and headquarters management.

GANNON: **Matthew J. Hauser '75** (922 W. 52nd St., Erie, PA 16509) was promoted to manager of the marketing department of Erie Insurance Group in July. His "Erieplaceable Insurance" sales promotion campaign won the national Sammy Award at the 1984 Insurance Advertising Conference.

GEORGIA: **Mark Allison '79** (24 Matawan Circle, Smyrna, GA 30080) recently began a sales position with American Thread. . . **Jeff Belk '79** (2525 Octavia Ln. N.E., Marietta, GA 30062) has recently obtained a new position with Eastern Business

Forms in Atlanta. . . **Art Garrison '77** (2525 Octavia Ln. N.E., Marietta, GA 30062) is now a salesman for the Kalwall Corporation covering the Southeastern United States. . . **Russ Lemieux '78** (2525 Octavia Ln. N.E., Marietta, GA 30062) is working for the Robert Kellen Company in public relations.

KENTUCKY: **The Very Reverend Samuel W. Tinsley, III '66** (3908 Palisades Dr., Weirton, WV 26062) is currently dean of the Northwestern Deanery of the Episcopal Diocese of West Virginia and rector of the Episcopal Tri-Parish. He has served as chapter advisor and chaplain to Alpha Theta chapter at West Virginia.

LOUISIANA STATE: **Erby Aucoin '55** (700 Miradon Ave., Harahan, LA 70123) is the team photographer for the New Orleans Saints. . . **Timothy C. "Timmy" Ellender '62** (Box 264, Houma, LA 70360) is judge of Division C of the 32nd Judicial District Court. He is also the little brother to Jimmy Gaidry. . . **E. J. "Jimmy" Gaidry '61** (P.O. Drawer 2067, Houma, LA 70361) was recently elected judge for Division A of the 3rd Judicial District Court. He is also active in NHRA racing and has held one national record in F Stock. . . **Dr. Trenton L. James '60** (P.O. Box 145077, Baton Rouge, LA 70808) has received the national Patient Care Award for Excellence in Patient Education from "Patient Care," a journal for primary care physicians. He received a plaque and \$750. . . **Vernon Melancon '61** (440 Charles St., New Iberia, LA 70560) is a dentist who is also a national championship tricycle racer.

MISSISSIPPI STATE: **Ronald L. Miller '77** (2850 Delk Rd., Apt. 31-F, Marietta, GA 30067) has been named district manager of Progressive Architecture. He is responsible for *Advertising Sales of Progressive Architecture* a publication of Penton/IPC in the Southeast. Ron and his wife Joanne who is a dentist, have been in Georgia for two years.

NEBRASKA: **Pierce T. Raubach '31** (248 West 8th St., Valentine, NE 69201) wanting a different hobby upon his retirement, he began to create machine-tooled miniature replicas of ancient cannons. Currently he's working on a one fourth inch scale, three inch Civil War Parrott cannon complete with ball ammunition.

OHIO STATE: **William E. Knepper '28** (180 E. Broad St. 4th Fl., Columbus, OH 43215) was honored recently by the Ohio State Alumni Association. He was awarded the Ralph Davenport Mershon Alumni Award for service to the university.

OLD DOMINION: **George Cox '66** (P.O. Box 2937, Myrtle Beach, SC 29577) was recently elected to the office of Marshal of Phi Alpha Delta law fraternity. In his capacity as Marshal, he will serve as a member of a nine person executive board which will govern the international fraternity for two years. He is a managing partner of Lumpkin and Sherrill law firm.

PENN. STATE: **Capt. Thomas L. Ferrier '59** (5387 Edgewater Dr., Ewa Beach, HI 96706) has been assigned as Commander of Fleet Training Group, Pearl Harbor. He is leaving the position of Underway Training Officer, Fleet Training Group, San Diego.

PRESBYTERIAN: **Art Baker '51** (Athletic Department, Furman University, Greenville, SC 29613) the former assistant head football coach at Florida State is the new head coach at East Carolina University.

PURDUE: **Robert T. Jones '79** (7474 Hollywood Blvd., Hollywood, CA 90046) is now in charge of television distribution for Cannon Films in Hollywood.

Issel Retires

VETERAN DENVER Nuggets center Dan Issel (Omega '68) — fourth on the all-time pro scoring list — nearly broke his vow not to cry as he confirmed at a recent news conference that he would retire at the end of the current NBA season.

"I like to end up today not on the waiver wire . . ." he said as his voice broke before newsmen and teammates who were gathered at the conference.

"It's very important for me to leave with people thinking I can play a couple more years — rather than sitting on the end of the bench," Issel said.

Dan, who is thirty-six, is in his fifteenth year as an NBA professional.

PRO-FILE

RHODES: David L. Jolly, Jr. '43 (30 Wallace Rd., Memphis, TN 38117) retired June 19, after 38 years, 8 months and 4 days of military service. He is now finalizing a pamphlet to sell, indicating sources of tourism information and agencies to contact. He is also compiling a military travellers guide to include recreational facilities/family camps on military posts.

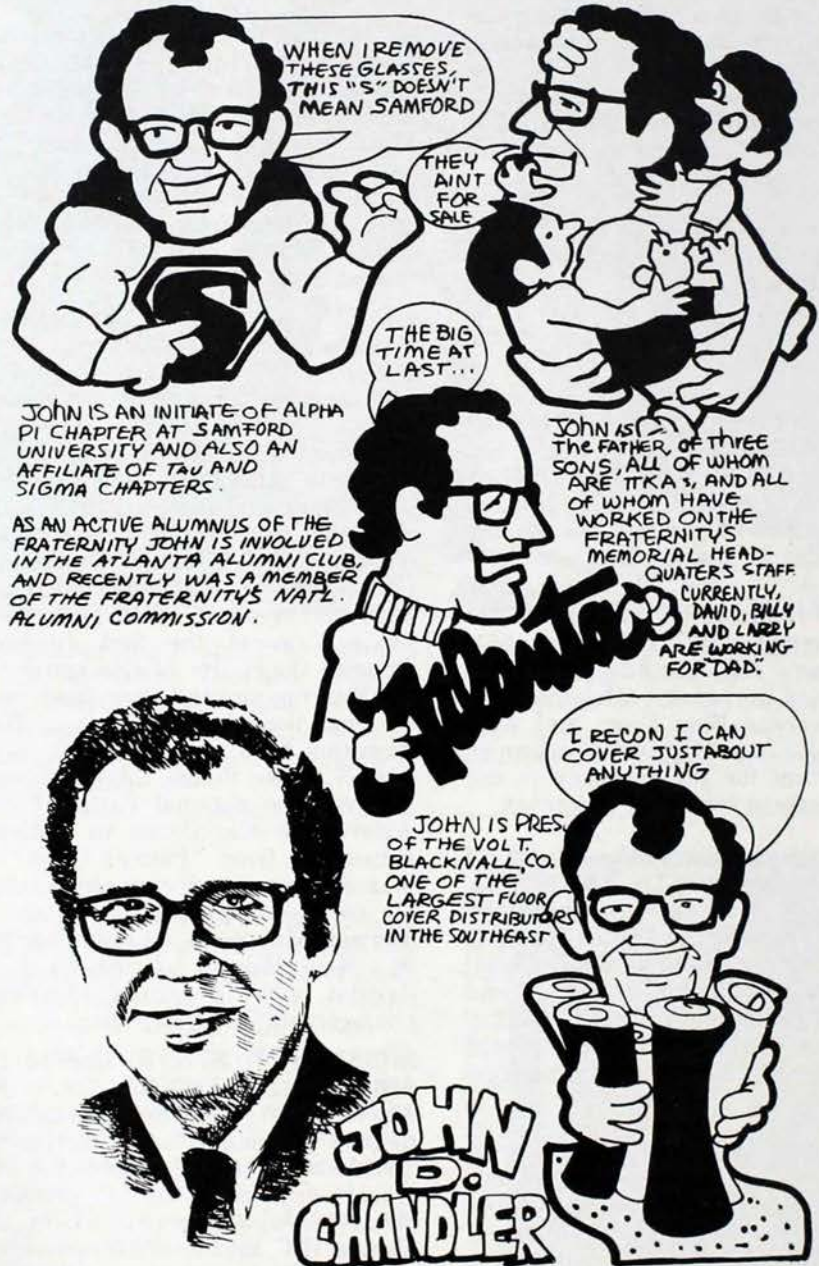
SYRACUSE: Ted Koppel '58 (11910 Glen Mill Rd., Potomac, MD 20854) is the recipient of the 1984 George Orwell Award for "distinguished contribution to honesty and clarity in public language." Koppel is moderator of ABC-TV's *Nightline*.

TENNESSEE: George A. Hill, MD '73 (516 Victoria Cove, Brentwood, TN 37027) has been elected chairman of the Junior Fellows in District VII of the American College of Obstetricians and Gynecologists. He is currently an instructor and Fellow in the Division of Reproductive Endocrinology and Infertility at Vanderbilt University's School of Medicine.

TULSA: David L. Blankenship '55 (6761 S. 71st E. Ave., Tulsa, OK 74133) is the director of external affairs for Rockwell International Corp's Tulsa facilities. He received the U.S. Air Force's Civilian Exceptional Service Award for his achievements as president of the 226,000 member Air Force Association. He was elected AFA board chairman during the convention events. . .

Dennis D. Bradford '65 (3200 N.W. 18th, Oklahoma City, OK 73107) has been appointed to chair the regulatory affairs and legislation committee of the National Advisory Council to the Small Business Administration. He is vice president of Petrosouthern, Inc. an oil and gas exploration Co. (in Tampa, FL). . .

Julian L. Carr, Jr. '66 (315 Lyonnais, Creve Coeur, MO 63141) has been named president of Spectrum Emergency Care, Inc., a firm that provides physician staffing to 350 hospital emergency departments. He was also named president of ARA Services' Medical Services Company. . . **Dr. Edwin Strong, Jr. '75** (6824 S. Toledo, #424, Tulsa, OK 74136) has been named acting director of Tulsa University's development. He has been on the faculty of Tulsa University for twenty years, with his most recent position being coordinator of special programs.



“A Land Remembered”

Review

ONCE AGAIN, with his sixth novel, *A Land Remembered*, Patrick D. Smith is doing well in the literary world. A native of Mendenhall, MS, Pat holds a B.A. and a Master's degree in English from the University of Mississippi. Prior to moving to Florida in 1966, he served for four years as director of Public Relations at Ole Miss. This past March he was inducted into the 1984 Gamma Iota Hall of Fame for being a strong supporter of both the Ole Miss chapter of Pi Kappa Alpha and the Memorial Headquarters.

A Land Remembered, is a family saga involving three generations on the Florida frontier, is doing well and has already been nominated for the 1984 Pulitzer Prize in literature and has passed through all but the final step to be filmed as a TV mini-series for CBS.

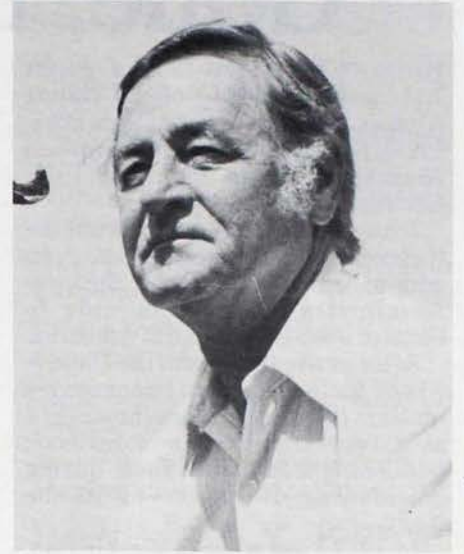
The author of six novels, Pat has now been nominated three times for the Pulitzer Prize in literature, the first two times for *Forever Island* in 1973 and for *Angel City* in 1978. *Forever Island* has been published in 33 countries, and *Angel City* was filmed as a major movie starring Ralph Waite and Paul Winfield and

has aired three times on national television. His first two novels — *The River Is Home* and *The Beginning* — were set in Mississippi, and all of his books since then, including *Allapattah*, are Florida novels.

A Land Remembered, follows three generations of the fictional MacIvey family through 110 years (1858-1968) of the development of Florida, and has been hailed by critics as the most monumental work yet to be written about Florida. The saga follows the MacIvey family from dirt-poor cattle ranchers to a Miami real estate tycoons. The sweeping story that merges is a rich, rugged Florida history featuring a memorable cast of crusty, indomitable cattle ranchers battling wild animals, rustlers, Confederate deserters, starvation, and hurricanes to carve a kingdom out of the swamp. But their most formidable adversary turns out to be greed, including finally their own.

Patrick Smith is a story-teller who gets out of the way and lets the story tell itself. Carefully crafted, the story moves with a flow that makes for compelling and satisfying reading.

The first edition of *A Land*



Patrick Smith (Gamma Iota '44)

Remembered has already sold out as the second edition continues to show equal success.

Editor's Note: Patrick Smith like so many other IKA authors has donated an autographed copy of his new book to the Harvey T. Newell Library at the Memorial Headquarters in Memphis. Other alumni that have sent copies of published books to the Memorial Headquarters include Tom Wicker, Craig Claiborne and *The Amazing Kreskin*.

Tell us what's new.

My permanent record should include this important news . . .

- New job
- Marriage
- Birth
- New address
- Promotion
- Death
- Other

Mail To: Pi Kappa Alpha Memorial Headquarters
577 University Street
Memphis, TN 38112-1689

Name _____ Chapter _____

Address _____

City _____ State _____ Zip _____

News: _____

Print it in the SHIELD & DIAMOND, too!

Gone, But Not Forgotten

JOHN E. HORNE (Gamma Alpha '33), past president of Pi Kappa Alpha's Memorial Foundation (1967-1969) passed away at his home in Alexandria, VA, on January 8, 1985. He was 76 years old.

John was a former chairman of the Federal Home Loan Bank Board, an administrator of the Small Business Administration and an aide to Senator John Sparkman of Alabama.

After graduating from the University of Alabama, where he earned his masters degree in history, he worked as a representative for a textbook publishing company. Then during World War II he served in the Navy.

In 1947 John went to Washington, D.C. and began working for Senator Sparkman. He became deputy administrator of the old Small Defense Plants Administration which later was renamed Small Business Administration, of which John became administrator.

John rejoined Sparkman's staff in 1953 and three years later was appointed assistant campaign manager for the Democratic presidential



John E. Horne (Gamma Alpha '33)

ticket of Adalai Stevenson and Sparkman. During the 1960 presidential race he was the executive director of the National Citizens Committee for the Kennedy-Johnson ticket.

After the 1960 election John returned to his post in Small Bus-

iness Administration and remained there until President Kennedy appointed him to the board of the Federal Home Loan Bank. In 1965 he became chairman of that board and served in the position for three years. He resigned in 1968 to become president and director of the Investors Mortgage Insurance Company in Boston. John remained with the company until 1978 when he formed his own consulting business.

Along with serving Pi Kappa Alpha as Memorial Foundation President, John also served the Fraternity as chairman of the 1958 National Convention which was held in Washington, D.C.; national treasurer of the Supreme Council (1966-1968); member of the Alumni Commission (1982-1984); and a member of the Washington, D.C. Alumni Association.

Pi Kappa Alpha also awarded John the Fraternity's Distinguished Achievement Award in 1965.

John is survived by his wife Ruth, two daughters Mrs. Richard Clark and Mrs. James Ewart, and four grandchildren.

George T. Abernathy (Tennessee)
4/10/84, Newport News, VA.

Alfred G. Aldridge (Kansas State)
8/30/84, Albuquerque, NM.

Newman T. Allison (Cornell)
4/9/84, Fort Lauderdale, FL.

James L. Argubright (SMU)
4/27/82, Dallas, TX.

Winston Atteberry (Virginia)
1/4/83, Eunice, LA.

Lyle J. Babbitt, Jr. (Ohio State)
11/11/84, Columbus, OH.

Frederick P. Behle (Washington)
6/24/84, St. Louis, MO.

Elmer H. Biles, Sr. (Pennsylvania)
6/14/84, Lutherville-Timonium, MD.

Eddie R. Blair (Texas) 6/5/84,
Kirkwood, MO.

William T. Bodenhamer (Mercer)
10/4/84, Tifton, GA.

**Albert T. Boehler, Jr. (Tennessee-
Martin)** 2/26/84, Trenton, TN.

**Edward Bourland (Mississippi
State)** 9/12/83, Amory, MS.

Andre B. Bowne (Vanderbilt)
4/9/84, Morehead, KY.

Harry P. Carten (Utah State)
8/4/84, Rolling Hill Estates, CA.

William E. Clark (Ohio State) 5/84,
Pittsburgh, PA.

George E. Clink (Cornell) 1/26/84,
Glen Falls, NY.

**Fred L. Coover, Jr. (Washington
and Lee)** 3/17/84, Baltimore, MD.

William C. Cox (Wittenberg)
10/8/84, Allison Park, PA.

**Harold G. Crankshaw (Carnegie-
Mellon)** 4/29/84, Bethesda, MD.

Robert W. Crouch (Southern Cal.)
10/18/84, Los Osos, CA.

**Arlie B. Davidson (Birmingham-
Southern)** 12/10/84, Birmingham,
AL.

**Russell K. Davis (California-
Berkeley)** 7/1/84, Denver, CO.

Herbert W. Dow (Nebraska)
4/4/84, Phoenix, AZ.

**Arthur C. Drewry (William and
Mary)** 7/7/84, Martinsville, VA.

Alvin M. Drumm (Southern Cal.)
8/84, Orange, CA.

John T. Duda (Virginia Tech)
10/13/84, Princeton, WV.

William E. Duncan (Oregon State)
10/12/84, Portland, OR.

Col. Chester H. Dunning (Illinois)
5/14/84, San Antonio, TX.

Ascham J. Duval (Richmond)
6/18/84, Richmond, VA.

David A. Eaves (E. Illinois) 8/2/84,
Bethalto, IL.

William T. Edger (Kentucky)
3/17/84, Versailles, KY.

**William S. Eggleston (California-
Berkeley)** 3/20/84, Laguna Hills,
CA.

**George N. Elliott (Missouri-
Columbia)** 10/12/84, Laguna Hills,
CA.

Dr. James S. Ferguson (Millsaps)
9/24/84, Greensboro, NC.

Dennis K. Finch (Drake) 10/7/84,
Papillion, NE.

Jack F. Furin (Utah) 4/20/84, Salt
Lake City, UT.

Harold E. Gilbert (Minnesota)
10/8/84, Edina, MN.

Oliver F. Goodwin (Auburn)
1/18/83, Dothan AL.

James A. Gordon (Ohio State)
12/22/83, Columbus, OH.

Edward L. Grimsley (Duke)
11/2/84, High Point, NC

Robert P. Haldiman (Wisconsin)
9/5/84, Blanchardville, WI.

Scott Hale (Texas-Arlington)
Arlington, TX.

Roy M. Halsey (Cal. Berkeley)
3/23/84, San Juan Island, WA.

Dr. Ralph B. Hanahan (South Carolina)
12/31/83, Lakeland, FL.

Robert L. Harlan (Colorado)
5/7/82, Bellevue, WA.

Jay L. Harrison (North Georgia)
6/28/84, Huntsville, AL.

Joseph G. Harrold (Florida)
9/9/84, Gainesville, FL.

Frank N. Hayes (Samford)
8/27/84, Huntsville, AL.

Daniel V. Herlong, Jr. (Millsaps)
12/6/84, Jackson, MS.

Herman L. Hess (Wittenerg)
11/22/84, Bradenton, FL.

Robert P. Hill (Georgia) 2/14/84,
New Smyrna Beach, FL.

Russell G. Hill (Cincinnati) 10/7/84,
Cincinnati, OH.

T. Frank Hobson, Jr. (Stetson)
11/9/84, Tampa, FL.

William S. Hodgins (Illinois)
10/11/84, Oconomowoc, WI.

Harold E. Hollister (Utah State)
12/30/84, Lake San Marcos, CA.

Lawrence W. Holtsinger (Georgia Tech)
8/31/84, Atlanta, GA.

Frank I. Hopkins (SMU) 11/25/84,
Mesquite, TX.

Norman E. Hulcher, Sr. (Arizona State)
12/26/84, Paradise Valley, AZ.

James A. Hutton (Ohio) 6/20/84,
Bryan, OH.

Hugh C. Jackson (Purdue)
12/25/81, Los Altos Hills, CA.

Floyd Jenkins (William and Mary)
7/7/84, Richmond, VA.

Max Jones (Indiana State) 9/22/84,
Terre Haute, IN.

Tracy J. Kane (Texas) 6/27/84,
Harlingen, TX.

John R. Kasitch (Miami) 1/25/84,
Pattersonville, NY.

Kendall D. Litchfield (Murray State)
6/15/84, Passaic, NJ.

Charles Lombard (Ohio State)
6/7/84, Lakewood, OH.

Stewart E. Luques (Syracuse)
11/24/84, Passaic, NJ.

James W. Lusink, Jr. (Florida Southern)
12/83, Orlando, FL.

Jerry E. Mahoney (Transylvania)
5/22/84, Louisville, KY.

Rensselaer W. McClure, Jr. (Missouri-Columbia)
12/20/83, Lawrence, KS.

Walter H. McEwin (Memphis State)
7/27/84, Memphis, TN.

Rev. Samuel E. McFadden (Rhodes)
4/24/84, Somerville, TN.

William G. McFarlin (West Virginia)
12/4/83, Clarksburg, WV.

Emil F. Meis, Jr. (Oklahoma)
10/23/84, San Antonio, TX.

Ralph G. Meyer (Illinois) 10/26/84,
Flora, IL.

Willis C. Milton (Transylvania)
1/18/84, Rural Retreat, VA.

Foster P. Mitchell (Transylvania)
5/8/84, Cincinnati, OH.

Romeo P. Morin (New Hampshire)
10/11/84, Manchester, NH.

Thomas C. Murphy (Wisconsin)
10/8/84, Mt. Pleasant, SC.

Morris R. Noel (Georgetown)
10/21/84, Tulsa, OK.

Reynolds I. Nowell (Utah State)
8/84, Forest City, PA.

Dr. Joseph P. Olmert, Jr. (Presbyterian)
5/84, Charlotte, NC.

William T. Parker (Tennessee)
10/25/84, Sunnyvale, CA.

James S. Penney, Jr. (Florida)
12/19/83, Bonifay, FL.

Allen D. Porter (Tulane) 12/29/84,
Kingsport, TN.

Sidney W. Provensal, Jr. (Tulane)
10/11/84, New Orleans, LA.

Stephen C. Pryor (Davidson)
3/31/84, Winston-Salem, NC.

Marion E. Reeves (Miami) 7/6/84,
Pensacola, FL.

Edwin H. Riggs, Jr. (Nebraska)
5/12/84, McCook, NE.

Giles H. Roberts (South Carolina)
11/17/84, Marion, SC.

Jimmy F. Rose (Mississippi State)
2/14/84, Dallas, TX.

David G. Sanders (Hampden-Sydney)
7/13/84, Middlesboro, KY.

Robert D. Scheires (Penn. State)
10/15/84, State College, PA.

Lloyd G. Schleicher (Cincinnati)
11/25/84, Louisville, KY.

William R. Senter, Jr. (Georgia)
12/12/84, East Ridge, TN.

Harry L. Shaner, Jr. (North Carolina)
9/11/84, New York, NY.

Elbert J. Sheffield (Utah) 6/18/84,
Pasadena, CA.

John C. Sherman, Jr. (Alabama)
9/13/84, Decatur, GA.

Jack R. Shirey (Eastern New Mexico State)
6/23/84, Denton, TX.

Frank D. Smith, Sr. (Oklahoma)
8/13/84, Amarillo, TX.

Henry O. Steinmetz (Missouri-Rolla)
9/27/84, St. Louis, MO.

James R. Stevenson, Jr. (Cornell)
3/24/84, Troy, NY.

James P. Talton (William and Mary)
3/11/84, Juno, GA.

Robert G. Thompson (Samford)
9/20/84, Portsmouth, VA.

Ed Ballou Former President of Memphis A.A.

FORMER CHAIRMAN of the Pi Kappa Alpha Memorial Foundation's scholarship committee, Edward B. Ballou, Jr. (Beta Zeta '50), died of cancer at Baptist Memorial Hospital in Memphis, TN, on January 29, 1985.

For thirty years Ed worked as an agent for New York Life Insurance. During that time he was also president of Group Insurance Analysts, Inc.

Ed was also was a member of the Tennessee executive committee of the Republican Party, a past national director of the Jaycees, and a director for Health Systems Management, Inc.

In 1972 he served Pi Kappa Alpha as the president of the Memphis Alumni Association and was also was the chapter advisor for Theta chapter at Rhodes College (formerly Southwestern at Memphis) in the early sixties.

Ed is survived by his wife Jeanne.

The following is a list of all the committed scholarships for the 1984-85 school year. Alumni interested in establishing a scholarship with Pi Kappa Alpha's Memorial Foundation should contact David Rheney at the Memorial Headquarters for information.

| CHAPTER | SCHOOL | AWARD | AMOUNT |
|-----------------|-------------------------|-----------------------|-------------------|
| Alpha | Virginia | Paul Meaders | L \$250 |
| Alpha | Virginia | William C. Parrish | L \$500 |
| Beta | Davidson College | Dr. Augustus Hill | A \$500 |
| Zeta | Tennessee/Knoxville | Tom W. Wade | L \$250 |
| Theta | Rhodes College | Dr. Augustus Hill | L \$500 |
| Theta | Rhodes College | John Hille | A \$250 |
| Sigma | Vanderbilt | Wilbert Chope Fund | A \$500 |
| Sigma | Vanderbilt | Wilbert Chope Fund | L \$500 |
| Tau | North Carolina | A. Frank Thomas, Jr. | L \$500 |
| Upsilon | Auburn | Robert Lambert | A \$250 |
| Upsilon | Auburn | Edward "Tut" Joiner | L \$500 |
| Omega | Kentucky | Wickliffe Moore | L \$1,000 |
| Omega | Kentucky | Wickliffe Moore | A \$1,000 |
| Alpha Alpha | Duke | Dr. John McGovern | A/L \$500 |
| Alpha Eta | University of Florida | E. Dixie Beggs | A \$500 |
| Alpha Eta | University of Florida | A. Frank Smith | L \$250 |
| Alpha Iota | Millsaps | General Robert Blount | A \$250 |
| Alpha Phi | Iowa | Gary Wicklund | A \$250 |
| Alpha Xi | Cincinnati | Gary Kunkleman Fund | L \$250 |
| Alpha Omicron | Southwestern | Robert E. Hardaway | A \$500 |
| Alpha Rho | Ohio State | Gary Gieser | A \$250 |
| Alpha Chi | Syracuse | Thomas Muller | L \$250 |
| Alpha Omega | Kansas State | Alumni | A \$500 |
| Alpha Omega | Kansas State | Alumni | L \$500 |
| Beta Gamma | Kansas | Jack Kennedy | A \$250 |
| Beta Gamma | Kansas | Dean Kimmel Fund | <i>incomplete</i> |
| Beta Eta | Illinois | Virgil McBroom | L \$500 |
| Beta Eta | Illinois | John D. Steely | A \$500 |
| Beta Mu | Texas University | Coulter Sublett | L \$250 |
| Beta Nu | Oregon State | Gordon Duncan | A \$250 |
| Beta Pi | Pennsylvania | T. S. Sotos | L \$250 |
| Beta Pi | Pennsylvania | David Maxwell | A \$250 |
| Beta Sigma | Carnegie/Mellon | Joe Thomas | L \$250 |
| Beta Phi | Purdue | Arthur S. Bowes | A \$250 |
| Beta Phi | Purdue | Arthur S. Bowes | L \$250 |
| Gamma Alpha | Alabama | John E. Horne | A \$500 |
| Gamma Alpha | Alabama | Richard Ogle | L \$500 |
| Gamma Iota | Mississippi | T. C. Gibbs | L \$250 |
| Gamma Upsilon | Tulsa | Bob Heard | L \$250 |
| Gamma Phi | Wake Forrest | Edward Wilson | A \$500 |
| Delta Mu | Southern Mississippi | Alumni | A \$500 |
| Delta Nu | Wayne State | Dr. Thomas Clark | L \$250 |
| Delta Epsilon | Chattanooga | Alumni | A \$250 |
| Delta Xi | Indiana | John Lisher | A \$250 |
| Delta Xi | Indiana | Memorial Fund | <i>incomplete</i> |
| Delta Sigma | Bradley | James S. Long, Jr. | L \$500 |
| Delta Sigma | Bradley | James S. Long, Jr. | A \$500 |
| Delta Upsilon | Stetson | Alumni | A \$250 |
| Delta Upsilon | Stetson | Alumni | L \$250 |
| Delta Chi | Omaha | Craig Hoenshell | A \$500 |
| Delta Chi | Omaha | Steve Sheppard | L \$500 |
| Delta Chi | Omaha | Pat Halloran | L \$250 |
| Delta Psi | Maryland | J. Allyson Ballenger | L \$500 |
| Epsilon Gamma | Texas Tech | John K. Sosnowy | L \$500 |
| Epsilon Gamma | Texas Tech | John K. Sosnowy/Wise | A \$500 |
| Epsilon Eta | Houston | Dr. John McGovern | A/L \$500 |
| Epsilon Iota | S.W. Missouri | John J. Lux | L \$500 |
| Epsilon Omicron | Stephen F. Austin | Dr. Gary Henry | A \$1,000 |
| Epsilon Sigma | Tennessee/Martin | Dr. Paul Blaylock | L \$250 |
| Epsilon Omega | East Central University | George W. Abshire | A \$250 |
| Zeta Kappa | Ferris State | Dr. Thomas Clark | L \$250 |
| Eta Alpha | Clemson | Dr. Jerome V. Reel | A \$250 |
| Eta Alpha | Clemson | Richard C. Robbins | L \$250 |
| Eta Nu | Northern Illinois | Rick Anderson | A \$500 |
| Alabama | to rotate | W. M. McKissack Fund | A/L \$1,000 |
| California | to rotate | Quentin Richard | A \$500 |
| California | to rotate | Quentin Richard | L \$500 |

Direct from Pi Kappa Alpha National HQ... DEEP ENGRAVED GLASSWARE



CELEBRATE YOUR ACTIVATION, COMMEMORATE YOUR MEMBERSHIP— AN IDEAL GIFT IDEA FOR ANY OCCASION

Now for the first time, you can own Official Pi Kappa Alpha Glassware and ceramics, individually engraved to your order—even personalized if you desire. With engraving so deep you can really feel it, these keepsakes will bring years of pleasure.

- #7910—19 oz. **Glazed Ceramic Stein.** \$12.25 each; 4 for \$44.00 (not pictured)
- #7710—16 oz. **Glazed Ceramic Tankard.** \$10.75 each; 4 for \$38.00
- #1810—21 oz. **Admiral's Tankard.** \$17.50 each; 4 for \$62.00
- #3813—33 oz. **Heavy Schooner.** \$7.50 each; 4 for \$27.00
- #9811—3½ in. **Round Paperweight.** \$12.25 each; 4 for \$44.00
- #4709/4—17 oz. **Mugs in Sets of 4.** \$23.00 per set; 4 sets for \$80.00
- #9100/4—14 oz. **O-F's in Sets of 4.** \$16.40 per set; 4 sets for \$58.00

Add shipping charges:

1, 2 or 3 pieces or sets, add a total of \$2.; 4 or more add a total of \$4.

Clip out here and mail to:
PI KAPPA ALPHA NATIONAL HQ.;577 University Blvd., Memphis, TN 38112
Send me the following PI KAPPA ALPHA Products, engraved to my order as specified below:

Quantity _____ Item Wanted _____

Decoration wanted (choose one):

- ΠΚΑ PI KAPPA ALPHA PI KAPPA ALPHA Plus Crest

Optional—Check here if you desire personalization with Individual Name and Class year. Add \$5. for each different name, regardless of the number of pieces or sets ordered.

 Fill in Name and Class year here (if more than 1 name, use extra paper).

Total Amount of check or money order enclosed
(Be sure to add shipping charges):

\$

SHIP TO (NAME) _____

ADDRESS _____

CITY _____ STATE _____ ZIP _____

Pi Kappa Alpha

FRATERNITY JEWELRY



MONOGRAM BUTTON
GOLD FILLED
(MG/11) **\$6.75**



LAVALIER
Vertical Letter 10K
Gold Charm with 18"
Gold Filled Chain.
(3LL/02V) **\$24.25**



LITTLE
SISTER PINS
Badge Outline with
Crest. Gold Plate.
(LS/40) **\$10.00**

BADGES



SIZE NO. 1
Plain Bevel Border 10K
Yellow Gold.
(111) **\$45.00**



SIZE NO. 2
Plain Bevel Border 10K
Yellow Gold or Gold
Tone.
(212) \$60⁰⁰
Gold Tone \$8⁰⁰
#3 Size Only



SIZE NO. 2
Alternating Pearl &
Ruby. 10K Yellow Gold.
(233) **\$105.00**



SIZE NO. 3
Alternating Pearl & Garnet.
10K Yellow Gold.
(340) **\$120.00**

CHAPTER GUARDS



PLAIN NO. 06
10K Yellow Gold.
1 Letter **\$20.00**
2 Letter **\$27.50**



PEARL NO. 08
10K Yellow Gold.
1 Letter **\$42.00**
2 Letter **\$58.50**

Full color/complete price list available on request.

J. O. POLACK CO.

1700 Irving Park Rd. • Chicago, IL 60613
(800) 621-1904 • (312) 477-2100 (IL)

Major Credit Cards Accepted

Kappa Alpha



1982-83
K Pi Kappa Alpha Calendar



UNIVERSITY OF ILLINOIS



THE GIRLS OF TECH



1983-84 CALENDAR
TEXAS TECH



Pi Kappa Alpha Fraternity
ZETA CHAPTER
1984-85

Girls of CSUN



ICKS CALENDAR
Indiana University



1983-84 PIKE CALENDAR



PI KAPPA ALPHA-GAMMA DELTA CHAPTER MISSISSIPPI STATE UNIVERSITY

THE GIRLS OF PURDUE
1984-85 SCHOOL YEAR CALENDAR



1984-85 PIKA CALENDAR
THE GIRLS OF PENN ST

Dream Girls
1984



Pi Kappa Alpha
University of Arkansas
System



24TH ANNUAL EDITION
1984 CALENDAR

Women of ASU



PROCEEDS BENEFIT BIG BROTHERS
OF CENTRE COUNTY CHARITY

Alpha

