

McNICHOLS CO.



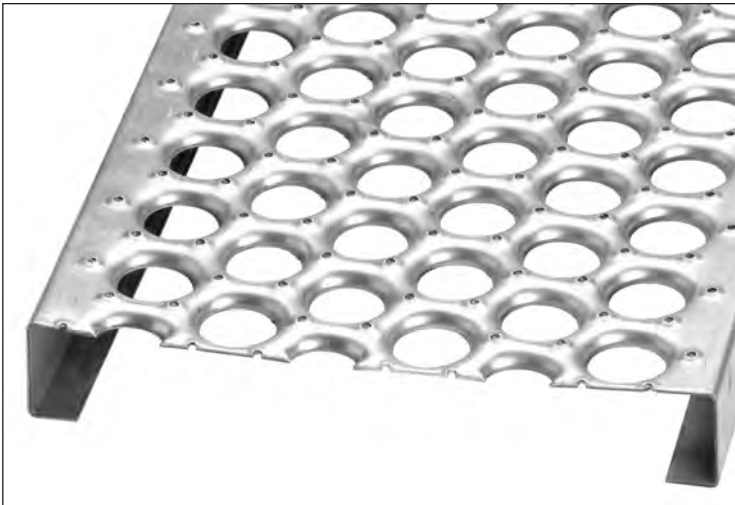
PERF-O GRIP[®]



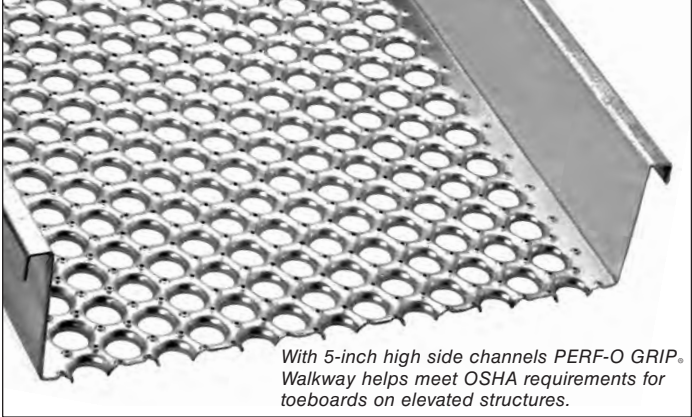
PERF-O GRIP® Grating

Plank Walkway Stair Treads

- Slip Resistant Surface**
- Ease of Installation**
- Variety of Widths/Heights**
- Large Open Area**
- High Load Capacity**



PERF-O GRIP® Walkway



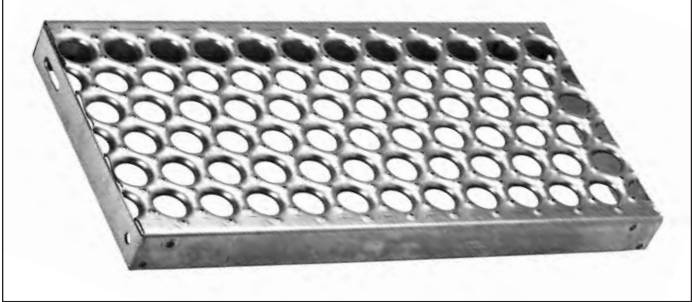
With 5-inch high side channels PERF-O GRIP® Walkway helps meet OSHA requirements for toeboards on elevated structures.

PERF-O GRIP® Grating helps to reduce accident rates by providing a safer walking-working surface. The unique surface of large debossed holes and perforated buttons provides maximum slip protection. In addition to providing safety, the resilient surface of **PERF-O GRIP® Grating** cushions the impact of footfalls thereby lessening worker fatigue and increasing efficiency.

High load capacity, long life, and high strength to weight performance is achieved through depth of section and structural design. Formed plank with integral side channels support loads with minimum transverse and longitudinal deflection. There are no rivets or pressure joints to break or loosen.

Large open area (38% of surface area depending on product size) permits free flow of air, heat and light. Often eliminates need for sprinklers under catwalks and platforms.

PERF-O GRIP® Stair Tread



PERF-O GRIP® Plank Grating makes a unique non-slip stairway and platform for this observation tower.



Self-draining, slip resistant PERF-O GRIP® Plank Grating is perfect for this park footpath through a forested area—summer or winter.

STOCK LIST					
CATALOG NO.	WIDTH	HEIGHT	CATALOG NO.	WIDTH	HEIGHT
GALVANIZED STEEL - 13 GAUGE			PLAIN STEEL - 13 GAUGE		
M4051513	5"	1-1/2"	MC051513	5"	1-1/2"
M4071513	7"	1-1/2"	MC07151M	7"	1-1/2"
M4072013	7"	2"	MCC72013	7"	2"
M4101513	10"	1-1/2"	MCC02013	10"	2"
M4102013	10"	2"	MCM02013	10"	2"
M4121513	12"	1-1/2"	MC12151M	12"	1-1/2"
M4122013	12"	1-1/2"	MC12201M	12"	2"
M4181513	18"	1-1/2"	MCC22013	12"	2"
M4182013	18"	2"	MCG82011	8"	2"
GALVANIZED STEEL - 11 GAUGE			PLAIN STEEL - 11 GAUGE		
M4245011 (Walkway)	24"	5"	MCC82011	8"	2"
M4305011 (Walkway)	30"	5"	ALUMINUM - .125 GA (5052-H32)		
M4365011 (Walkway)	36"	5"	M7122012	12"	2"
			M7182012	18"	2"

HOW TO ORDER/SPECIFY

Simply call 1-800-237-3820, and we will be ready to help you with your needs. We can process your inquiry or order faster, if you have the following information available when you call.

CONSIDER:

1. Application or use of product
2. Physical requirements
 - A. Loading requirements
 - B. Open area
 - C. Slip resistance

PLEASE SPECIFY:

3. **"PERF-O GRIP® Plank Grating or TRACTION TREAD™ Flooring, Plank and/or Ladder Rungs"**
4. **Quantity:** number of planks or pieces required
5. **Material:**
 - Plank: 11 or 13 Gauge Galvanized Steel
11 or 13 Gauge Plain Steel (special)
16 Gauge Stainless Steel 304 (special)
excludes TRACTION TREAD™
.125" Aluminum 5052-H32
 - Walkway: 11 Gauge Galvanized Steel
 - Flooring: 11, 13, or 16 HRPO Steel
.125" Aluminum 5052-H32
16 Gauge Stainless Steel 304 (special)
 - Ladder Rung: 11 or 13 Gauge HRPO Steel
11 or 13 Gauge Galvanized Steel
.125" Aluminum 5052-H32
6. **Width:**
 - Plank: 5", 7", 10", 12", 18" (24" & 30" special)
 - Walkway: 24", 30", 36"
 - Flooring: 36"
 - Ladder Rung: 1-1/4", 1-5/8" or 2-1/4"
7. **Height:**
 - Plank: 1-1/2", 2" (3" or 4" special order)
 - Walkway: 5" depth
 - Flooring: see p. 77 (TRACTION TREAD™)
8. **Length:**
 - Plank: 12' (longer by special order)
 - Walkway: 12'
 - Flooring: 10'
 - Ladder Rung: 48" or 60"
9. Required accessories such as stair treads, clips, etc.

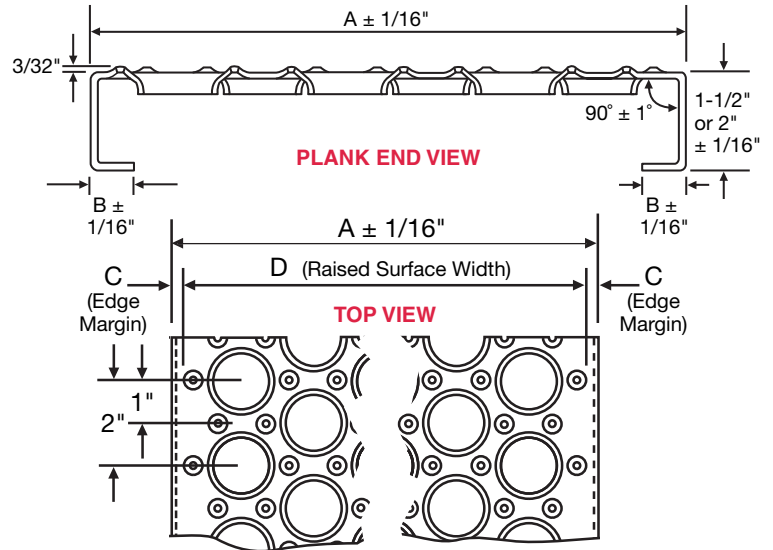


TO PLACE AN ORDER CALL:
1-800-237-3820

FAX: See page 2 for nearest service center.

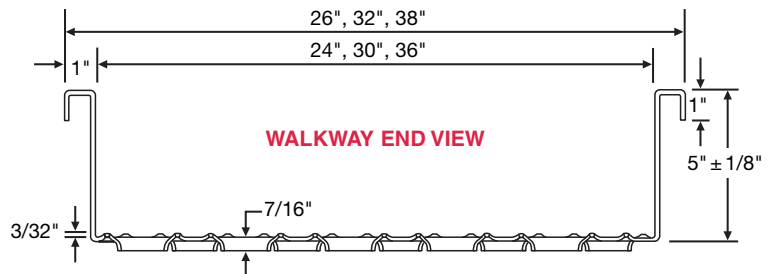
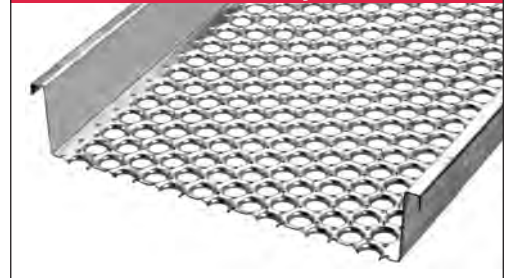
PERF-O GRIP® Grating

Plank Product Details					PERF-O GRIP® Plank
Width	A	B	C	D	
5"	4-15/16"	7/8"	9/32"	4-3/8"	
7"	6-15/16"	7/8"	7/16"	6-1/16"	
10"	9-15/16"	7/8"	1/4"	9-7/16"	
12"	11-15/16"	7/8"	13/32"	11-1/8"	
18"	17-15/16"	7/8"	19/32"	16-3/4"	
24"	23-15/16"	7/8"	1/2"	22-5/16"	
30"	29-15/16"	7/8"	31/32"	28"	



PERF-O GRIP® Walkway

PERF-O GRIP® Walkway offers a true width by measuring from the inside flange, not the outside flange.



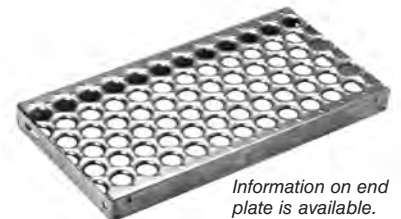
PERF-O GRIP® Plank Stair Treads

MATERIAL: 11 or 13 gauge Galvanized Steel
11 or 13 gauge HRPO Steel

HEIGHTS: 1-1/2" or 2"

WIDTHS: 5", 7", 10", 12"

LENGTHS: 24", 30" and 36"



Information on end plate is available.

Slip Resistance-All Directions

Great Reconditioning Material

TRACTION TREAD™ Grating

Safe Walking-Working Surface

Hundreds of Perforated Buttons

CONSTRUCTION:

Flooring: 11, 13, 16 Gauge HRPO Steel
 .125" Aluminum 5052-H32
 16 Ga. Stainless Steel 304 (special)

Plank/Treads: 11 or 13 Gauge HRPO Steel
 11 or 13 Gauge Galvanized Steel
 .125" Aluminum 5052-H32

Ladder Rungs: 11 or 13 Gauge HRPO Steel
 11 or 13 Gauge Galv Steel
 .125" Aluminum 5052-H32
 16 Gauge Stainless Steel 304 (special)

HEIGHTS:

Flooring: Please refer to chart p. 78.
 Plank: 1-1/2" or 2"
 Ladder Rungs: 1-1/8" or 1-1/2"
 Treads: 1-1/2" or 2"

WIDTHS:

Flooring: 36"
 Plank: 7", 10" or 12"
 Ladder Rungs: 1-1/4", 1-5/8" or 2-1/4"
 Treads: 7", 10", or 12"

LENGTHS:

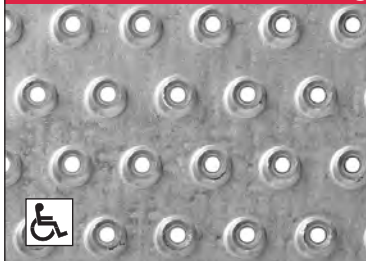
Flooring: 10'
 Plank: 10' or 12'
 Ladder Rungs: 48" or 60"
 Treads: 24", 30" and 36"

**Flooring
Plank
Treads
Rungs**



This slip resistant plank has buttons to help meet OSHA standards!

TRACTION TREAD™ Flooring



Standard pattern

TRACTION TREAD™ Flooring, Plank and Ladder Rungs feature a surface with hundreds of perforated buttons that provide slip-resistance in all directions making it a practical choice for industrial applications. TRACTION TREAD™ is also appropriate for commercial applications where pedestrian traffic is a consideration, perfectly suited for ADA-compliant requirements.

TRACTION TREAD™ is easily adapted for a multitude of applications, offering a safe walking-working surface for walkways, ramps, stair treads and equipment platforms. Traction Tread is ideal for the manufacture of special and fabricated products, and is often used as a reconditioning material over existing surfaces that do not provide slip-resistance.

 Gratings that meet ADA spacing requirements are noted with this symbol.

HOW TO ORDER/SPECIFY

Simply call 1-800-237-3820, and we will be ready to help you with your needs. We can process your inquiry or order faster, if you have the following information available when you call.

CONSIDER:

1. Application or use of product
2. Physical requirements
 - A. Loading requirements
 - B. Open area
 - C. Slip resistance

PLEASE SPECIFY:

3. **"TRACTION TREAD™ Flooring, Plank and/or Ladder Rungs"**
4. **Quantity:** number of planks or pieces required
5. **Material:**
 - Plank: 11 or 13 Gauge Galvanized Steel
11 or 13 Gauge Plain Steel (special)
.125" Aluminum 5052-H32
 - Walkway: 11 Gauge Galvanized Steel
 - Flooring: 11,13, or 16 HRPO Steel
.125" Aluminum 5052-H32
16 Gauge Stainless Steel 304 (special)
 - Ladder Rung: 11 or 13 Gauge HRPO Steel
11 or 13 Gauge Galvanized Steel
.125" Aluminum 5052-H32
6. **Width:**
 - Plank: 5", 7", 10", 12", 18" (24" & 30" special)
 - Walkway: 24", 30", 36"
 - Flooring: 36"
 - Ladder Rung: 1-1/4", 1-5/8" or 2-1/4"
7. **Height:**
 - Plank: 1-1/2", 2" (3" or 4" special order)
 - Walkway: 5" depth
 - Flooring: see p. 78
8. **Length:**
 - Plank: 12' (longer by special order)
 - Walkway: 12'
 - Flooring: 10'
 - Ladder Rung: 48" or 60"
9. Required accessories such as stair treads, clips, etc.

TRACTION TREAD™ Stair Tread



TRACTION TREAD™ Ladder Rungs

**2, 3, or 4
Rows of Buttons!**



TO PLACE AN ORDER CALL:

1-800-237-3820

FAX: See page 2 for nearest service center.

McNICHOLS

©2008 Galvanized treads in stock now!

1-800-237-3820

mcnichols.com • 77

TRACTION TREAD™ Flooring

TRACTION TREAD™ Flooring Specifications

TYPE	D	B	C	MATERIAL	#SF
TRACTION TREAD	.156*	.375	.213	11 Ga HRPO	5.0
TRACTION TREAD	.156*	.375	.176	13 Ga HRPO	3.8
TRACTION TREAD	.156*	.375	.154	16 Ga HRPO	2.5
TRACTION TREAD	.156*	.375	.219	.125 Alum.	1.6

*Dimension "D" shown represents hole diameter at bottom of material. Diameter at top for TRACTION TREAD flooring will be greater. Size on any dimension for any style may vary, minimum of range is shown. All dimensions subject to mill tolerance.

STOCK LIST

GALVANIZED STEEL

CATALOG NO.	WIDTH OR SIZE	HEIGHT
M2101511	Plank - 11 ga.	10"
M2102011	Plank - 11 ga.	10"
M2102013	Plank - 13 ga.	10"
M2121511	Plank - 11 ga.	12"
M2122011	Plank - 13 ga.	12"
M2121513	Plank - 13 ga.	12"
M2122013	Plank - 13 ga.	12"
M2B72013	Tread - 13 ga.	7"
M2B02013	Tread - 13 ga.	10"
M3LRST34	Rung - 13 ga.	3 Row

PLAIN STEEL

MP141016	Flooring - 16 ga.	3' x 10'	
MP141011	Flooring - 11 ga.	3' x 10'	.213"
M6LRST24	Rung - 13 ga.	2 Row	1-1/2"
M6LR0348	Rung - 13 ga.	3 Row	1-1/8"
M6LR0448	Rung - 13 ga.	4 Row	1-1/2"

STAINLESS STEEL 304 OR 316

M8141016	Flooring Chev. - 16 ga.		1-1/8"
M8LR0348	Rung - 16 ga. 3 Row	48.75"	1-1/8"
M8LR0448	Rung - 16 ga. 4 Row	48.75"	1-1/2"
M9LRST34	Rung - 16 ga. 3 Row	48.75" or 60"	1-1/8"

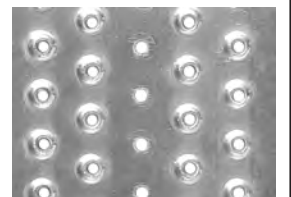
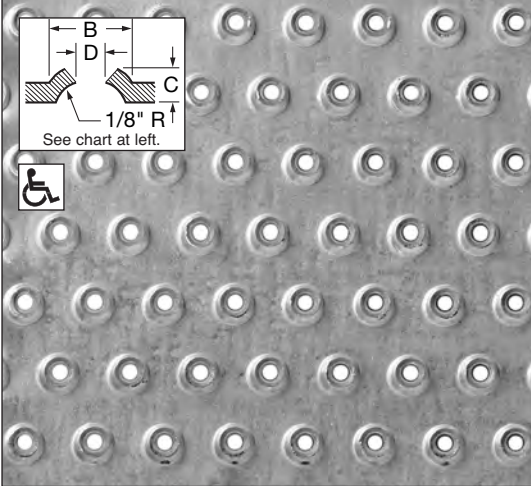
ALUMINUM 5052-H32

M5102012	Plank - .125"	10"	2"
MA141012	Flooring - .125"	3' x 10'	.219"
M5LRST34	Rung - .125" 3 Row	60"	1-1/8"
M5LRST44	Rung - .125" 4 Row	60"	1-1/2"



ADA approved TRACTION TREAD™ plank was used to provide a safe, slip-resistant walkway.

TRACTION TREAD™ Flooring - Standard Pattern



TRACTION TREAD™ Flooring Drain Hole Pattern - Special Order

Standard pattern with 1/8" drain holes every 3rd row. Location of holes and dimples same as standard pattern. Other alternative patterns available.

Gratings that meet ADA spacing requirements are noted with this symbol.

TRACTION TREAD™ Ladder Rungs



This truck platform is constructed using GRIP STRUT® Plank and TRACTION TREAD™ 4-row Ladder Rungs.

Ladder Rung - 13 GA. STEEL

ROWS	WIDTH	HEIGHT	WEIGHT	SPAN			
				2'-0"	3'-0"	4'-0"	
2	1-1/4"	1-1/2"	1.2#lf	C	680	420	320
				D	.120	.180	.430
3	1-5/8"	1-1/8"	1.3#lf	C	495	340	250
				D	.110	.220	.510
4	2-1/4"	1-1/2"	1.5#lf	C	885	620	450
				D	.080	.160	.370

NOTE: Values are based on concentrated load placed at mid-span with a safety factor of 2.0

Ladder Rung - .125" ALUMINUM

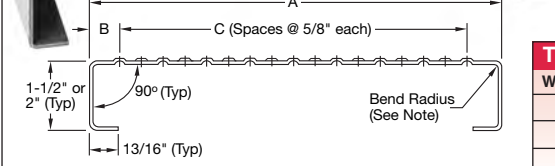
ROWS	WIDTH	HEIGHT	WEIGHT	SPAN			
				2'-0"	3'-0"	4'-0"	
2	1-1/4"	1-1/2"	.5#lf	C	659	407	310
				D	.240	.360	.870
3	1-5/8"	1-1/8"	.5#lf	C	479	329	242
				D	.222	.440	1.03
4	2-1/4"	1-1/2"	.7#lf	C	856	600	436
				D	.162	.350	.750

NOTE: The data for aluminum ladder rung represents estimates of load capacities for .125" aluminum. Data based on conversion of load table data from 13 GA. steel, and applying appropriate factors for thickness, yield, and young's modulus.

TRACTION TREAD™ Plank




Skid resistant buttons



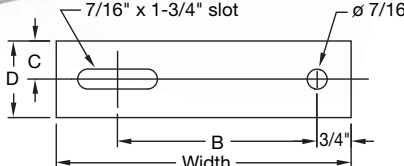
TRACTION TREAD™ Plank

WIDTH	A	B	C
7"	6-7/8"	15/16"	8
10"	9-7/8"	7/8"	13
12"	11-7/8"	15/16"	16

TRACTION TREAD™ Plank Stair Tread



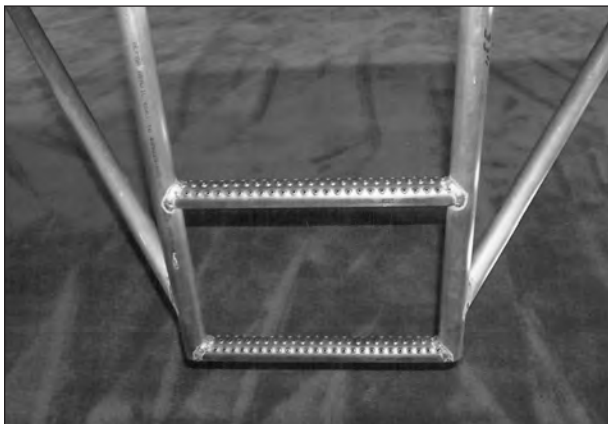
Carrier Plate Dimensions



Product Width Nominal	B	Nominal Height	C	D
7"	4"	1-1/2"	19/32"	1-3/16"
		2"	27/32"	1-11/16"
10"	7"	1-1/2"	19/32"	1-3/16"
		2"	27/32"	1-11/16"
12"	9"	1-1/2"	19/32"	1-3/16"
		2"	27/32"	1-11/16"



TRACTION TREAD™ was used to make non-slip, gripping stair treads for this railroad locomotive.



These TRACTION TREAD™ 3 row rungs provide a safe ladder to platform at trade show.

TRACTION TREAD™ Plank 13-Gauge Steel **LOAD TABLE**

Height	#/LF	Width		SPAN									
				2'-0"	3'-0"	4'-0"	5'-0"	6'-0"	7'-0"	8'-0"	9'-0"	10'-0"	
1-1/2"	3.4#	7"	U	982	437	246	157	109	80	61	49	39	
			D	.070	.157	.279	.436	.627	.854	1.115	1.411	1.742	
			C	573	382	287	229	191	164	143	127	115	
			D	.056	.125	.223	.348	.502	.683	.892	1.129	1.394	
2"	3.7#	7"	U	1524	678	381	244	169	124	95	75	61	
			D	.057	.129	.229	.357	.514	.700	.915	1.158	1.429	
			C	889	593	445	356	296	254	222	198	178	
			D	.046	.103	.183	.286	.412	.560	.732	.926	1.143	
1-1/2"	4.3#	10"	U	688	306	172	110	76	56	43	34	28	
			D	.070	.157	.279	.436	.627	.854	1.115	1.411	1.742	
			C	573	382	287	229	191	164	143	127	115	
			D	.056	.126	.223	.348	.502	.683	.892	1.129	1.394	
2"	4.6#	10"	U	1067	474	267	171	119	87	67	53	43	
			D	.057	.129	.229	.357	.514	.700	.915	1.158	1.429	
			C	889	593	445	356	296	254	222	198	178	
			D	.046	.103	.183	.286	.412	.560	.732	.926	1.143	
1-1/2"	4.9#	12"	U	573	255	143	92	64	47	36	28	23	
			D	.070	.157	.279	.436	.627	.854	1.115	1.411	1.742	
			C	573	382	287	229	191	164	143	127	115	
			D	.056	.125	.223	.348	.502	.683	.892	1.129	1.394	
2"	5.2#	12"	U	889	395	222	142	99	73	56	44	36	
			D	.057	.129	.229	.357	.514	.700	.915	1.158	1.429	
			C	889	593	445	356	296	254	222	198	178	
			D	.046	.103	.183	.286	.412	.560	.732	.926	1.143	

TRACTION TREAD™ Plank 11-Gauge Steel **LOAD TABLE**

Height	#/LF	Width		SPAN									
				2'-0"	3'-0"	4'-0"	5'-0"	6'-0"	7'-0"	8'-0"	9'-0"	10'-0"	
1-1/2"	4.7#	7"	U	1869	831	467	299	208	153	117	92	75	
			D	.035	.079	.140	.219	.315	.429	.561	.710	.876	
			C	1090	727	545	436	363	311	273	242	218	
			D	.028	.063	.112	.175	.252	.343	.449	.568	.701	
2"	5.2#	7"	U	3054	1358	764	489	339	249	191	151	122	
			D	.028	.064	.113	.177	.254	.346	.452	.572	.706	
			C	1782	1188	891	713	594	509	445	396	356	
			D	.023	.051	.090	.141	.203	.277	.362	.458	.565	
1-1/2"	6.0#	10"	U	1308	581	327	209	145	107	82	65	52	
			D	.035	.079	.140	.219	.315	.429	.561	.710	.876	
			C	1090	727	545	436	363	311	273	242	218	
			D	.028	.063	.112	.175	.252	.343	.449	.568	.701	
2"	6.4#	10"	U	2138	950	535	342	238	175	134	106	86	
			D	.028	.064	.113	.177	.254	.346	.452	.572	.706	
			C	1782	1188	891	713	594	509	445	396	356	
			D	.023	.051	.090	.141	.203	.277	.362	.458	.565	
1-1/2"	6.9#	12"	U	1090	484	273	174	121	89	68	54	44	
			D	.035	.079	.140	.219	.315	.429	.561	.710	.876	
			C	1090	727	545	436	363	311	273	242	218	
			D	.028	.063	.112	.175	.252	.343	.449	.568	.701	
2"	7.3#	12"	U	1782	792	445	285	198	145	111	88	71	
			D	.028	.064	.113	.177	.254	.346	.452	.572	.706	
			C	1782	1188	891	713	594	509	445	396	356	
			D	.023	.051	.090	.141	.203	.277	.362	.458	.565	



www.mcnichols.com

- Extensive Search Capabilities
- Quote and Order History
- Stock Lists and Load Tables
- E-mail Product Specific Questions
- Request FREE Catalogs
- Send Inquiries to Sales Team
- Product and Application Photos
- Live Help Chat Service

e-mail sales@mcnichols.com