

Planning for Change

From Fragile to Agile



2015 Lake Arrowhead Symposium
Program

OCTOBER 18 - 20, 2015



“For 25 years the Arrowhead Symposium’s conveners have continuously innovated the program and format to advance participants’ understanding of emerging urban and regional trends. This year we turn our focus toward the changing field of planning.”

— Juan Matute

Table of Contents

Background	4
Host Organizations	5
Venue	6
This Year's Theme	8
Symposium at a Glance	10
Session Details	12
Speaker Bios	22
Sponsors	28

Background

The UCLA Lake Arrowhead Symposium on the Transportation-Land Use-Environment Connection is an annual invitation-only event attended by 125 planners, policymakers, senior policy analysts, business executives, elected officials, and university faculty from around the country. The Symposium was founded as a retreat where cross-cutting planning and policy ideas spanning land use, transportation, and the environment could be discussed among a diverse group of public officials, practitioners, and experts.

The program is curated by the Lewis Center for Regional Policy Studies and the Institute of Transportation Studies, two of the leading public policy and urban planning research centers in the UCLA Luskin School of Public Affairs. The 2.5-day event, now in its 25th consecutive year, is cited by many as one of the

most valuable and unique conference experiences they've ever attended.

In the past, the Symposium has addressed a multitude of important issues including:

- Resilient Cities and Regions (2014)
- Smart Technologies: Smart Policies (2013)
- Financing the Future (2012)
- Energy Policy (2011)
- Infrastructure Investment for Sustainable Growth (2010)

We hope to continue this tradition of excellence and innovation this year. If you would like more information about the Symposium or past events, please visit:

www.uclaarrowheadsymposium.org



Host Organizations

UCLA Lewis Center for Regional Policy Studies

The Lewis Center advances research solutions for California's urban and regional challenges.

Founded in 1988 as a research center of the UCLA Luskin School of Public Affairs, we are dedicated to the interdisciplinary study and understanding of urban and regional policy issues affecting California. We support high-quality scholarly research, offer public programs and events, conduct a wide range of research studies, and provide accessible publications of our research findings. We strive to make our research and activities accessible and responsive to policymakers, opinion leaders, public officials, and the general community.

UCLA Institute of Transportation Studies

The UCLA Institute of Transportation Studies (ITS) is one of the leading transportation policy research centers in the U.S. The ITS works closely with and is generously funded by two organizations—the UCLA Lewis Center for Regional Policy Studies and the University of California Center on Economic Competitiveness in Transportation (UCCONNECT). Each year dozens of ITS faculty, students, and research staff collaborate on a wide array of transportation policy and planning studies, ranging from an analysis of the travel trends and transportation needs of immigrants and low-income workers, to the testing and evaluation of innovative fare programs to increase public transit use.

UCLA Luskin School of Public Affairs

At the convergence of the fields of social work, urban planning, and policy-making, the UCLA Luskin School of Public Affairs identifies and develops emerging areas of research and teaching and cultivates leaders and change agents who advance solutions to society's most pressing problems.

Faculty of the Luskin School of Public Affairs are actively engaged in research that address pressing national and regional issues including immigration, drug policy, prison reform, health care financing, transportation and the environment, national security, economic development, and an aging U.S. and world population.

Organizers



Brian Taylor
Director,
UCLA Lewis Center/ITS



Juan Matute
Associate Director,
UCLA Lewis Center/ITS



Sean Calvin
Researcher,
UCLA Lewis Center/ITS



UCLA Luskin School of Public Affairs

Things to Do

UCLA LAKE ARROWHEAD
CONFERENCE CENTER

Get away and get inspired!

P.O. BOX 160, 850 WILLOW CREEK ROAD, LAKE ARROWHEAD, CA 92352 T: (909) 337-2478
F: (909) 337-1030 E: UCLALAKEARROWHEAD@HA.UCLA.EDU W: UCLACONFERENCECENTER.COM

THINGS TO DO & THINGS TO KNOW...

PLAY:

- **Basketballs** — Basketballs available at the Front Desk for check-out — play on our two half-courts
- **Board Games** — Located at the Front Desk — honor system for borrowing
- **Bocce Ball** — Play Bocce on the lawn; check out equipment at the Front Desk
- **Golf** — Enjoy our putting green — putters and golf balls available at the Front Desk for check-out
- **Horseshoes** — Available at the Front Desk for check-out
- **Sand Volleyball** — Volleyballs available at the Front Desk for check-out
- **Shuffleboard** — Equipment available at the Front Desk for check-out — shuffleboard is located outdoors next to Iris meeting room
- **Tennis** — Tennis balls and rackets available at the Front Desk for check-out
- **Other** — Footballs, soccer balls and Frisbees can be checked out from the Front Desk

SEE THE SIGHTS:

- **Walk the Lake** — Trail maps are available at the Front Desk
- **Zen Deck** — Located on the upper edge of the property with the best view of the Lake!

RELAX OR WORKOUT:

- **Fitness Center** — State-of-the-art equipment with 24/7 access with your room key
- **Indoor Hot Tub** — Relax in our indoor, fireside and hot tub (adjacent to the swimming pool)
- **Swimming Pool** — Open from mid-May to mid-October

MAIN LODGE:

- **The Main Lodge** — Opens daily at 6:00 a.m. and closes at midnight
- **Coffee Service** — Complimentary coffee and tea service available daily in the lobby
- **Front Desk** — Staffed daily from 7:00 a.m. to midnight
- **Fruit Bowl** — Complimentary whole fruit available daily in the lobby
- **Gift Shop** — Limited hours; check with Front Desk
- **Ice** — Ice machines located in the laundry room and outside the Tavern
- **Laundry Room** — Machines located across from the Iris meeting room. Accessible with room key.
- **Overnight Shift** — We are staffed 24 hours a day — for assistance, please dial '0'
- **Vending Machine** — Snacks available in the vending machines outside the Tavern

MEALS:

Dining bell indicates the start of each meal

- **Breakfast** — Breakfast buffet from 8:00 to 9:00 a.m.
- **Lunch** — Lunch buffet from 12:00 to 1:00 p.m.
- **Dinner** — Four-course served dinner begins at 6:30 p.m.

WI-FI AND BUSINESS CENTER:

- **Copies/Printing** — See Front Desk for assistance
- **Laptop Usage** — Laptops available for check-out at the Front Desk
- **Wi-Fi** — Complimentary wireless Internet throughout the property

WHO CAN ATTEND:

- **Conferences** — We welcome any group with a learning purpose that supports UCLA's mission of education, research and service. These groups include but are not limited to: Academic institutions, healthcare, government agencies, non-profit organizations and associations.
- **Bruin Woods** — Family Camp for UCLA alumni from late June to Labor Day. UC alumni, faculty and staff are welcome for Weeks 9 and 10.
- **Family Holidays** — "Mini Bruin Woods" for the Thanksgiving, Winter, New Year's and Spring Break holidays. UC alumni, faculty and staff are welcome.

CONTACT US TODAY! (909) 337-2478 • UCLALakeArrowhead@ha.ucla.edu • UCLAConferenceCenter.com



9/15

Venue Map



This Year's Theme

Planning for Change: From Fragile to Agile

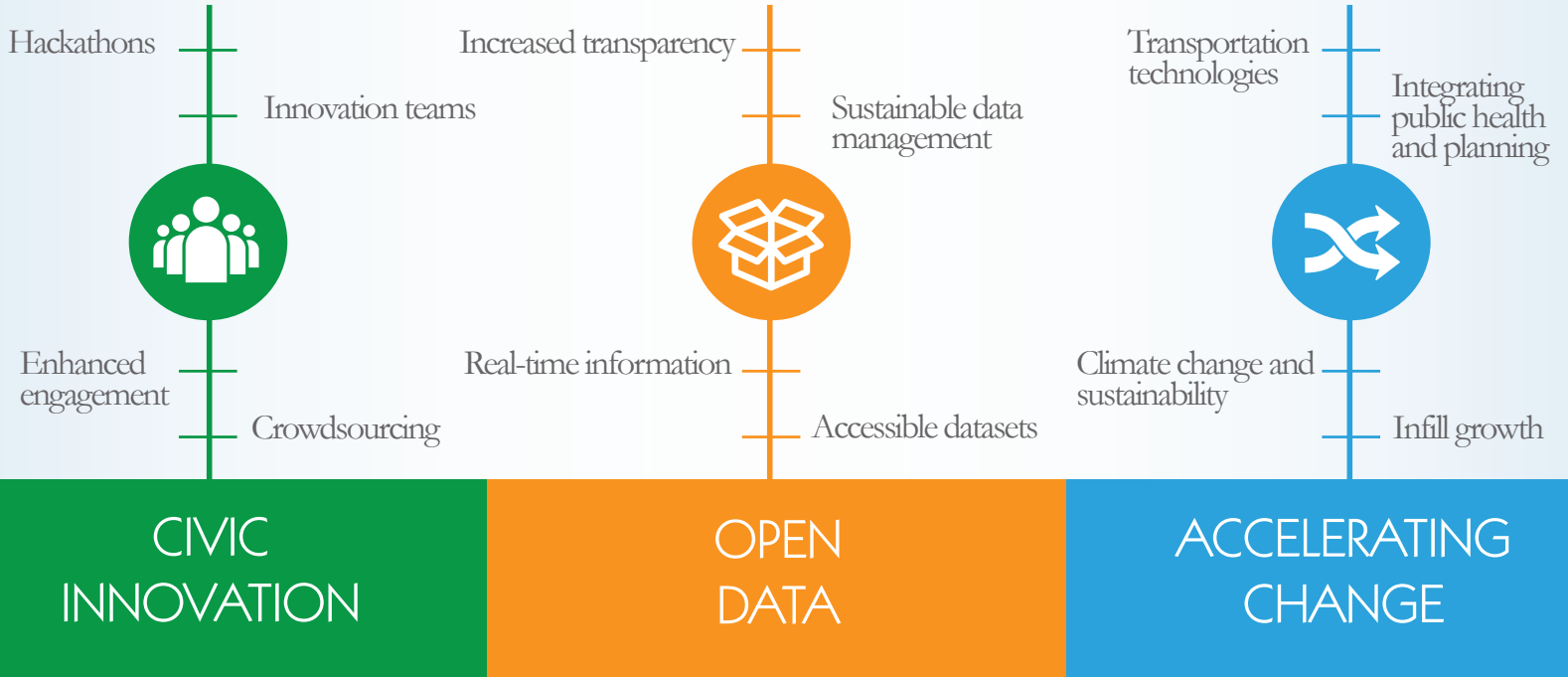
Our steering committee's charge for the 25th Lake Arrowhead Symposium was to spotlight how policy, technological, and environmental change will shape the future of urban and regional planning.

Our program features many of the changes facing cities and regions: transportation innovation, a renewed infill focus, uncertain market conditions, climate change, and shifting generational needs and expectations. This includes internal changes shaping the public sector at all levels: the creation of cross-functional innovation teams, the opening of public data, and enhanced engagement techniques.

We propose features of a possible approach – agile planning in an effort to interpret what these external and internal trends will mean for the future of urban and regional planning. Agile planning borrows from three movements: civic innovation, resilience, and agile software development:

- Civic innovation, highlighted by the growing role of big data and data scientists in public sector decision-making and efforts to engage the public through technology.
- Resilience and the need for robust plans that thrive under a range of possible future conditions.
- Agile software development, a rapid product management approach characterized by cross-functional teams, continuous learning, adaptive planning, and flexible responses to change.

We recognize that agile planning is a framework in progress. At the 2015 Lake Arrowhead Symposium, we aim for our presentations and conversations to advance insight into how planners will accommodate an expanding set of tools and imperatives to acknowledge, analyze, and answer change.



Agile Planning

WHAT IS IT?

- 1. GUIDING** learning and decision-making after plan adoption
- 2. EMBRACING** new technologies and data
- 3. BUILDING** meaningful alternatives that promote flexibility
- 4. CREATING** plans that thrive under a variety of future conditions

HOW CAN WE USE IT?

- 1. ACTIVELY PARTICIPATE** in your organization's innovation group
- 2. COLLABORATE WITH OTHERS** on open data and civic engagement initiatives
- 3. DEVELOP METRICS AND INDICATORS** to drive accountability and decision-making
- 4. ADAPT AGILE APPROACHES** for your organizations processes

Symposium at a Glance

SUNDAY, OCTOBER 18, 2015

12:00 — 1:30 PM	Registration (optional, à la carte lunch)	FLR
1:30 — 2:00 PM	Welcome	PVR
2:00 — 2:45 PM	An Introduction to Agile Planning	PVR
2:45 — 3:45 PM	Change Management in Planning	PVR
3:45 — 4:15 PM	Break	—
4:15 — 5:30 PM	Moving Targets in Goods Movement	PVR
5:30 — 6:30 PM	Check-in and reception	LVR
6:30 — 8:00 PM	Dinner	DR
8:00 — 9:30 PM	Agile Planning	PVR
9:30 — 11:00 PM	Informal reception	LVR

MONDAY, OCTOBER 19, 2015

7:45 — 8:30 AM	Breakfast	DR
8:30 — 10:00 AM	Confronting Gradual Change	PVR
10:00 — 10:30 AM	Break	—
10:30 — 12:00 PM	Refocusing Planning	PVR
12:00 — 1:30 PM	Lunch	DR
1:30 — 3:00 PM	Managing Transportation Change	PVR
3:00 — 5:30 PM	Break	—
5:30 — 6:30 PM	Reception	IR
6:30 — 8:00 PM	Dinner	DR
8:00 — 9:30 PM	Startup Cities and Regions	PVR
9:30 — 11:00 PM	Informal reception	LVR

TUESDAY, OCTOBER 20, 2015

7:45 — 9:00 AM	Breakfast	DR
9:00 — 10:30 AM	Leveraging Innovations in Urban Planning	PVR
10:30 — 11:00 AM	Break	—
11:00 — 12:00 PM	Reflections	PVR
12:00 — 1:30 PM	Concluding remarks and lunch	DR

FLR= Front Living Room (Lobby)
PVR = Pine View Room
LVR = Lake View Room

IR= Iris Room
DR = Dining Room



Session 1

Introduction

Thomas Menino was mayor of Boston for 21 years. The “urban mechanic” focused on a back-to-basics approach for Boston: tracking snow plows, fixing potholes, and reportedly having a direct interaction with over half of the city’s residents during his tenure. His longevity in office also aided his longterm vision for the future of the city. In 2010, Menino started the Office of New Urban Mechanics to innovate the city’s approach to the basics and work with the city’s tech scene on citizen-facing technology projects. He named Nigel Jacob cochair.

Nigel Jacob is an accomplished urban innovator. He is a longtime board member of Code for America, the group that forges partnerships between cities and civic-minded technology entrepreneurs. The White House has recognized Mr. Jacob as a Champion of Change.

Through Living Cities, Mr. Jacob has published the City Accelerator Guide for Embedding Breakthrough Innovation in Local Government: a toolkit for local government teams that want to be more innovative.

New Urban Mechanics: An Introduction to Agile Planning

Nigel Jacob

Co-Chair, Mayor’s Office of New Urban Mechanics, City of Boston



Date: Sunday, October 18

Time: 2:00 PM

Location: Pine View Room

Moderator: Juan Matute

Session 2

Changes Facing Urban and Regional Planning

What strategies can planners and other urban managers use to envision, communicate, and implement change in cities? Both the general public and individuals within an organization have a tendency to be averse to change and risk.

Compensating for risk aversion and uncertainty is often necessary for a single actor to successfully implement change, but what happens when change is brought by a multitude of forces?



Date: Sunday, October 18

Time: 2:45 PM

Location: Pine View Room

Moderator: Juan Matute

Navigating the Bus: The Right People, Right Tools, Right Direction

John Keisler

Innovation Team Director, City of Long Beach

Managing Change in the Built Environment

Paul Moore

Principal, Nelson Nygaard



Session 3

Moving Targets in Goods Movement

Changing relationships between people, cities, and goods could fundamentally alter a goods movement industry that's already evolved to become more nimble and responsive.



Date: Sunday, October 18

Time: 4:15 PM

Location: Pine View Room

Moderator: Brian Taylor

Hard Turn to Port! Agility in Major Infrastructure Planning

Mike Christensen

Senior Executive Lead, Supply Chain Optimization, Port of Long Beach

An Agile Logistics Megacenter?

Iddo Benzeevi

CEO, Highland Fairview

Session 4

Agile Planning: Learning from Startups and Technology

How can planning departments maximize the public benefits from outreach to technology firms? How does the startup management approach inform how planning departments and agencies might incorporate innovation into their processes?



Date: Sunday, October 18

Time: 8:00 PM

Location: Pine View Room

From Hackathons to Challenges: Involving Technologists in the Civic Sector

Kat Karimi

Director, Civic Innovation Lab

Planning for Innovation while Innovating Planning

Francisco Contreras

Innovation and Strategic Initiatives Manager, City of West Hollywood

From Civic Innovation to Civic Integration: Strategies for Long-term Success

Dr. Shawn Landres

Civil Society Fellow, UCLA; Board Chair, Impact Hub Los Angeles

Session 5

Confronting Gradual Change

This panel focuses on how to identify and respond to fundamentally transformative changes that emerge gradually and without fanfare. Demographic projections provide some certainty in planning forecasts. We know that people will be exactly 5 years older in five years. But how can planners understand and respond to gradual preference shifts that shape residential and travel demand? What future changes might planners expect as the gradual introduction of autonomous vehicles affect cities and travel behavior?



Date: Monday, October 19

Time: 8:30 AM

Location: Pine View Room

Moderator: Martin Wachs

Age and Place

Dr. Sandra Rosenbloom

Professor of Community and Regional Planning, University of Texas at Austin

Moving In or Out? Location Preferences of Millennials and the Poor

Dr. Evelyn Blumenberg

Professor and Chair of Urban Planning, UCLA Luskin School

Automated and Connected Vehicles: Changing Cities and Travel Behavior

Dr. Steve Polzin

Director of Mobility Policy Research, Center for Urban Transportation Research, University of South Florida

Session 6

Refocusing Planning: The Mainstreaming of Public Health and Environmental Goals

California is a national and international climate action leader. In 2015, the state further charted its course towards an 80% reduction in greenhouse gas emissions by 2050. The state is pursuing a series of reforms to transportation planning in order to hit that long-term target.

However, California is also on the leading edge of impacts from climate change. Drought has fundamentally changed a state that has so long depended on imported water and being America's fruit, vegetable, & nut basket. As public health becomes a national focus, local agencies must respond by incorporating elements of health in their planning and design.



Date: Monday, October 19
Time: 10:30 AM
Location: Pine View Room
Moderator: Jessica Meaney

Swallowed by an Ocean of Drought

Dr. Mark Gold

Associate Vice Chancellor for Environment and Sustainability, UCLA

Turning the Ship on VMT

Dr. Steven Cliff

Assistant Director of Sustainability, Caltrans

Planning for a Healthier Los Angeles County

Jean Ambruster

Director, Los Angeles Public Health Program on Policies for Livable, Active Communities and Environments

Session 7

Managing Transportation Change

How can planning organizations look inward to make adjustments in order to meet the challenges of external change? This panel focuses on public sector management.



Date: Monday, October 19
Time: 1:30 PM
Location: Pine View Room
Moderator: Marcel Porras

SB 743 and the Sea Change in the Context for Urban Transportation Planning

Fred Dock

Transportation Director, City of Pasadena

Managing Internal Change at Caltrans

Garth Hopkins

Supervising Transportation Planning Chief at Caltrans

Managing Dollars and Making Sense of Change

Dr. Joshua Schank

Chief Innovation Officer, Los Angeles County Metropolitan Transportation Authority

Session 8

Startup Cities and Regions

In 2013, the Arrowhead Symposium probed how technology was changing transportation. This year, we'll consider how the startup economy is quickly changing cities. Startups are flexible organizations that focus on learning and creating. Most work in the technology sector, and those that are successful can create products and services that change the way people interact with cities.

For a variety of reasons, startup companies cluster geographically in only a handful of cities. The intensity of their collective growth and operations can stress the surrounding communities; straining residential and commercial rents.

What should be local government's comprehensive strategy toward technology-driven change?

A Tale of Two Cities and the Startup Economy

Dr. Taner Osman

Post-Doctoral Researcher, Lewis Center, UCLA Luskin School

Is Sharing Caring?

Dr. Michael Manville

Assistant Professor of City and Regional Planning, Cornell University

The Tech City: Coping or Thriving?

Pam O'Connor

Councilmember, City of Santa Monica



Date: Monday, October 19

Time: 8:00 PM

Location: Pine View Room

Moderator: Jim Newton

Session 9

Leveraging Innovations in Urban Planning

How can plans, planners, and planners thrive amidst an accelerating pace of change? What must planners do to take advantage new innovative tools and methods in order to maximize the benefit for communities, infrastructure systems, and the environment? This panel presents concrete examples and recommendations for planners and planning organizations.



Date: Tuesday, October 20
Time: 9:00 AM
Location: Pine View Room
Moderator: Chris Ganson

Bigger Data: Better Regional Transportation Plans?

Deena Platman

Senior Project Manager, DKS Associates

Drowning in Urban Data

Bill Fulton

Executive Director, Kinder Institute for Urban Research, Rice University

Innovating Our Understanding of Neighborhood Change

Julienne Chen

Deputy Director, Los Angeles Innovation Team, Office of Mayor Garcetti

Session 10

Reflections

This session brings together three leaders across the state to reflect on how the individual themes within the symposium and connect the lessons across the various panels. The speakers will opine on how can planners and policymakers take the themes back to their daily work.

Does an accelerating pace of change necessitate a more agile and responsive planning approach? How can these change factors fit into existing processes? With the knowledge of change across many different sectors and through different drivers, how can cities realistically respond? To what extent are people aware of these trends? Our speakers will attempt to answer these questions and more. During this closing panel, we invite all participants to provide their reflections on the symposium to the group.

Change in Planning

Susan Bransen

Chief Deputy Director, California Transportation Commission

Steve Heminger

Executive Director, Metropolitan Transportation Commission

Hasan Ikhata

Executive Director, Southern California Association of Governments



Date: Tuesday, October 20

Time: 11:00 AM

Location: Pine View Room

Moderator: Bill Fulton

Speakers



Jean Ambruster
Director, PLACE Program, Los Angeles County Department of Public Health

Jean is the Director of the PLACE Program (Policies from Livable, Active Communities and Environments) at the Los Angeles County Department of Public Health. The program's mission is to foster policy change that supports the development of safe, healthy, active environments for all Los Angeles County residents. PLACE makes grants and provides technical assistance to cities and communities to promote the development of policies such as bicycle and pedestrian master plans, complete streets, and safe routes to schools plans.

Iddo Benzeevi
CEO, Highland Fairview

Iddo Benzeevi is an entrepreneur and co-founder of Highland Fairview. Highland Fairview is a privately held development company specializing in large scale industrial, commercial, and residential developments. The company is currently developing several projects encompassing over 41 million square feet of buildings and facilities. Mr. Benzeevi heads the company and serves as its President and Chief Executive Officer.



Dr. Evelyn Blumenberg
Professor and Chair of Urban Planning, UCLA Luskin School

Professor Blumenberg's research examines the effects of urban structure — the spatial location of residents, employment, and services — on economic outcomes for low-wage workers, and on the role of planning and policy in shaping the spatial structure of cities. Her recent projects include analyses of the travel behavior of special population groups including low-income adults, immigrants, and youth; the effects of the economy and increasing gas prices on the travel behavior and transportation assets in low-income communities. Professor Blumenberg holds MA and PhD degrees in Urban Planning from the UCLA Luskin School of Public Affairs.

Susan Bransen
Chief Deputy Director, California Transportation Commission

Susan Bransen oversees the day-to-day operations of the California Transportation Commission, serving as the chief of staff and the principal policy advisor to the Commission Executive Director and Commission. Ms. Bransen's career spans more than 25 years in transportation. Ms. Bransen holds a Bachelor of Science degree in Business Administration, Accounting. She is a Certified Public Accountant and a member of the American Institute of Certified Public Accountants.



Julienne Chen
Deputy Director, Los Angeles Innovation Team, Office of Mayor Garcetti

Julienne Chen is the Deputy Director of the Los Angeles i-team, whose first priority area is inclusive neighborhood revitalization. She most recently was a Project Manager with the Louisville i-team, where she was responsible for both city-wide and place-based strategies to reduce vacant and abandoned properties and improve the city's permitting process.

Speakers

Michael Christensen
Senior Executive Lead for Supply Chain Optimization, Port of Long Beach

Michael Christensen is Senior Executive Lead for Supply Chain Optimization for the Port of Long Beach, the second-busiest U.S. seaport, working collaboratively with industry stakeholders to improve cargo flow. He has also served as Deputy Executive Director for the neighboring Port of Los Angeles. A registered professional engineer in 10 states, he earned a bachelor's degree in civil engineering from Arizona State University and a certification in executive education from Harvard Kennedy School of Government.



Dr. Steven Cliff
Assistant Director, Sustainability, Caltrans

Governor Jerry Brown appointed Dr. Steven Cliff as the California Department of Transportation's (Caltrans) assistant director of Sustainability, a position the Caltrans Director created to lead the department's efforts in developing and implementing initiatives to align with California's goals on sustainability. Prior to Caltrans, Dr. Cliff was the assistant chief of the Industrial Strategies Division at the California Air Resources Board (ARB).

Francisco Contreras
Manager of Innovation and Strategic Initiatives, City of West Hollywood

Francisco Contreras is the City of West Hollywood's Manager of Innovation and Strategic Initiatives. The City recently launched one of the first municipal innovations annual reports in the country as part of the WeHoX Technology and Innovation program that explores the intersections between technology and innovation for civic transformation. Francisco holds a MA in Urban Planning from UCLA Luskin.



Fred Dock
Director, California Department of Transportation

Mr. Dock is a traffic engineer and transportation planner with over 35 years of experience and currently directs the Department of Transportation for the City of Pasadena, California. He attained Bachelor and Masters Degrees in Civil Engineering at the University of California Berkeley, is registered as a Professional Engineer, is certified as a Professional Traffic Operations Engineer, and is a member of the American Institute of Certified Planners.

Bill Fulton
Executive Director, Kinder Institute for Urban Research, Rice University

Bill Fulton is an American author, urban planner, and politician. He served as Mayor of the City of Ventura, California from 2009 to 2011 and later as the Planning Director for the City of San Diego. In October 2014 he became the head of the Kinder Institute for Urban Research at Rice University in Houston, Texas. He is considered a leading advocate of the "Smart Growth" movement in urban planning. In 2009, he was named to Planetizen's list of "Top 100 Urban Thinkers".



Speakers



Dr. Mark Gold
Associate Vice Chancellor for Environment and Sustainability, UCLA

Mark Gold formerly served as President of the environmental group Heal the Bay, and was their first employee hired 20 years ago. has worked extensively over the last 20 years in the field of coastal protection and water pollution. In particular he has worked on research projects on urban runoff pollution, DDT and PCB contamination in fish, and the health risks of swimming at runoff contaminated beaches.. Mark was recently appointed Associate Vice Chancellor for Environment and Sustainability. Dr. Gold holds Bachelors and Masters in Biology and a doctorate in Environmental Science and Engineering from UCLA.

Steve Heminger
Executive Director, Metropolitan Transportation Commission

Steve Heminger is Executive Director of the Metropolitan Transportation Commission (MTC). MTC is the regional transportation planning and finance agency for the nine-county San Francisco Bay Area. It administers more than \$2 billion per year in funding for the operation, maintenance and expansion of the Bay Area's surface transportation network. He also serves on the UCLA Institute of Transportation Studies advisory board.



Garth Hopkins
Office Chief, Office of Regional Planning, Caltrans

Garth Hopkins is the Acting Assistant Division Chief with the California Department of Transportation, Division of Transportation Planning in Sacramento. He is responsible for overseeing staff working on a range of transportation planning related activities including development of the California Transportation Plan, Complete Streets, and guidance for the preparation of Regional Transportation Plans.



Hasan Ikhata
Executive Director, Southern California Association of Governments (SCAG)

Hasan Ikhata is the Executive Director of the Southern California Association of Governments (SCAG), the largest metropolitan planning organization in the United States. Appointed in January 2008, Mr. Ikhata has over 25 years of public and private sector experience in Transportation Planning in the Southern California Region. At SCAG Mr. Ikhata implements the policies of an 86-member Regional Council and directs day-to-day operations of the agency. Mr. Ikhata serves on the UCLA Lewis Center advisory board.



Nigel Jacob
Co-Chair, Mayor's Office of New Urban Mechanics, City of Boston

Nigel Jacob is the Co-Chair for the Mayor's Office of New Urban Mechanics in Boston, Massachusetts. Mayor Thomas M. Menino founded the Mayor's Office of New Urban Mechanics in 2010 as Boston's civic innovation incubator. With an extensive background in collaborative, citizen-facing technology projects, Nigel also serves as Mayor Menino's advisor on emerging technologies. In both of these roles, Nigel works to develop new models of innovation for cities in the 21st century. Prior to joining the City of Boston in 2006, Nigel worked for and launched a series of technology start-ups in the Boston area.



Speakers

Kat Karimi
Director, Civic Innovation Lab

Kat is the Cofounder and Director of Civic Innovation Lab, a platform where a wide spectrum of stakeholders collaborate and build solutions through a mix of community challenges, structured programming, and networking with public and private sector experts. She is a strategy and innovation specialist who has developed a variety of innovation programs that bring together the richness of open data, the values of human-centered design, and the leading-edge methodology of top-tier startup incubators.



John Keisler
Innovation Team Director, City of Long Beach

John Keisler is the Director of the Innovation Team and has lived in Long Beach for the past 12 years. He has a Masters in Public Administration from the USC Price School of Public Policy. Over the years, he's led multiple change-management projects throughout the City, serving as the Animal Care Services Bureau Manager, Business Operations Manager for the Parks, Recreation & Marine Department, and CFO for the Police Department.



Dr. Shawn Landres
Civil Society Fellow, UCLA

Shawn Landres, a Civil Society Fellow at UCLA Luskin, chairs the board of Impact Hub LA and serves on the LA County Quality & Productivity Commission (and chairs its Strategic Foresight Working Group) and the City of Santa Monica Social Services Commission. Co-founder of Jumpstart Labs, he is an active partner in early-stage ventures and social enterprises.



Dr. Michael Manville
Assistant Professor of City and Regional Planning, Cornell University

Michael Manville is Assistant Professor of City and Regional Planning and Fellow of the Institute of Social Sciences at Cornell University. He studies transportation, land use and local public finance. Professor Manville holds MA and PhD degrees in Urban Planning from the UCLA Luskin School of Public Affairs.



Paul Moore
Principal, Nelson Nygaard

Paul has 25 years of experience in developing major transportation and transit planning projects, small area planning and redevelopment studies, and livable transportation solutions. Paul specializes in working with communities that want to use transportation spending as a tool to make broad community improvements.



Speakers

Pam O'Connor
Councilmember, Santa Monica City Council

Councilmember Pam O'Connor has championed policies and partnerships that enhance community livability and wellbeing on the Santa Monica City Council since 1994 and has served as Mayor five times. She is particularly interested in issues that advance sustainability and mobility. Councilmember O'Connor also serves on the UCLA Lewis Center advisory board.



Dr. Taner Osman
Post-Doctoral Researcher, Lewis Center for Regional Policy Studies, UCLA Luskin

Taner Osman is currently a post-doctoral researcher in the Lewis Center and an instructor in the Department of Urban Planning at the University of California, Los Angeles. His research interests include regional development, economic development policy, urban spatial structures, and the impact of congestion on the economic performance of metropolitan regions. Dr. Osman holds a PhD in urban planning from the UCLA Luskin School of Public Affairs.

Deena Platman
Senior Project Manager, DKS Associates

Deena Platman, Principal Transportation Planner at Metro in Portland, Oregon is implementing cutting edge solutions to a problem that is exceptionally common to large Indian cities today – inefficient traffic management. A transportation planner with over 15 years of experience, she currently leads a revolutionary programme called the Regional Transportation Systems Management and Operations (TSMO), aimed at optimizing the existing transportation system in the region.



Dr. Steve Polzin
Director, Mobility Policy Research, Center for Urban Transportation

Dr. Polzin is the director of mobility policy research at the Center for Urban Transportation Research at the University of South Florida and is responsible for coordinating the Center's involvement in the University's educational program. Dr. Polzin carries out research in mobility analysis, public transportation, travel behavior, planning process development, and transportation decision-making. Dr. Polzin is on the editorial board of the Journal of Public Transportation and serves on several Transportation Research Board and APTA Committees.

Dr. Sandra Rosenbloom
Professor of Community and Regional Planning, University of Texas at Austin

Sandra Rosenbloom is a Fellow of Hampton K. and Margaret Frye Snell Endowed Chair in Transportation at the University of Texas at Austin. She spent 22 years at the University of Arizona, serving as Professor of Planning. She is the Editor of the Journal of the American Planning Association. Dr. Rosenbloom was also named a Lifetime Associate of the National Academy of Sciences for her service to the National Research Council, among many honors. She serves on the Executive Committee of the Transportation Research Board and holds a PhD in political science from UCLA.



Speakers

Dr. Joshua Schank
Chief Innovation Officer, Los Angeles County Metropolitan Transportation Authority

Joshua L. Schank is the first-ever head of LA Metro's Office of Extraordinary Innovation, which was created to implement new ideas to improve mobility in LA county. He serves as President and CEO of the Eno Center for Transportation in Washington, D.C., a nonpartisan transportation policy think tank. Mr. Schank earned an MA in City Planning – City Design and Development from MIT and a Ph.D. in Urban Planning with a Transportation Specialization from Columbia University. Mr. Schank serves on the UCLA Institute of Transportation Studies advisory board.



Sponsors



SCAQMD

California Environmental Protection Agency



Metro®



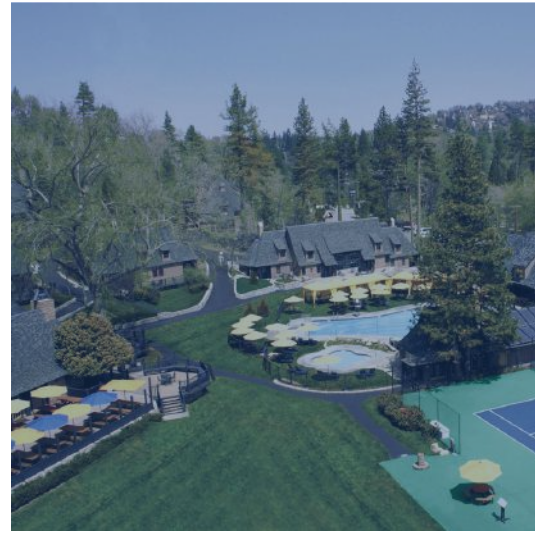
Caltrans®



ch2m.



SOUTHERN CALIFORNIA
ASSOCIATION of GOVERNMENTS





All contents © 2015 UCLA Lewis Center
lewiscenter@luskin.ucla.edu | (310) 562-7356