



Planning for Reopening Auburn Schools

School Board Workshop
January 4, 2021



Communications@auburn.wednet.edu

Overview

- State Guidance on Reopening and ASD Phased Reopening Proposal
- Health & Safety Preparation and Planning
- PK-12 Hybrid & Online Models
 - PK-12 Hybrid Phasing
 - Elementary
 - Secondary
- Expanding Access for Students Prior to Hybrid
- Board Comments and Discussion Throughout



State Guidance on Reopening and Phased Reopening Proposal

- State Guidance
- Parent Commitment
- Proposal for Phased Reopening

Evolution of Health Department Guidance

March 2020 - “Novel virus = No school”

August 2020 - “Proceed with extreme caution”

- Decision Tree established, among most restrictive in country
- Recommend distance learning above 75 cases/100K/14 days

December 2020 - “Reopen with caution”

- Decision Tree adjusted based on research, struggles in distance learning
- PK-3 can return up to 15 students
- 4-8 can return below 350 cases/100K/14 days and below 10% test positivity
- 9-12 can return below 200 cases/100K/14 days and below 10% test positivity

ASD follows health department guidance

ASD has followed the guidance of the Washington State Department of Health and our two county health departments

We propose to continue, with two modifications:

- Base decisions on local ASD virus rates, in addition to King and Pierce numbers
 - Rationale: Captures virus activity in our community
- Follow high school guidance for middle and high school
 - Rationale: Lack of cohorting (students change classes)

Current Data as of January 3

NOTE: Washington currently has the 7th lowest rate of COVID in the US. (source: CDC)

WA Department of Health Decision Tree for In Person Learning	King County	Pierce County	Auburn SD
<i>New cases per 100,000 residents, past 14 days</i> High >350 Moderate 50-350 (50-200 high school) Low <50	259 Moderate	369 High	562 High
<i>Positive test rate</i> High >10% Moderate 5-10% Low <5%	*10.9% High	*7.0% Moderate	*24.6% High

**Note: Total tests incomplete due to testing data backlog.*

Proposed Reopening Phasing PK-12

- **Phase 1: Expand limited in-person services**

- *Timeline: Immediately*

- Currently serving limited small groups of specific students with IEP services
- Expand to students with greatest academic, mental health needs
- Begin limited outdoor workouts/meetings for athletics and activities

- **Phase 2: Grades PK-2 reopening**

- *Timeline: When case rate is stable or trending down; no sooner than February 1*

- **Phase 3: Grades 3-5 reopening**

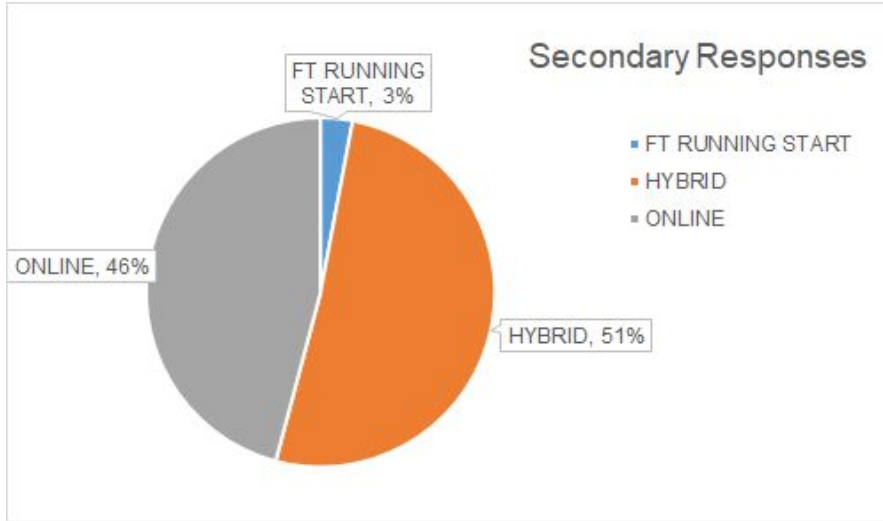
- *Timeline: When cases <350 AND <10% positive rate, no sooner than February 22*

- **Phase 4: Grades 6-12 reopening**

- *Timeline: When cases <200 AND <10% positive rate, no sooner than February 22*

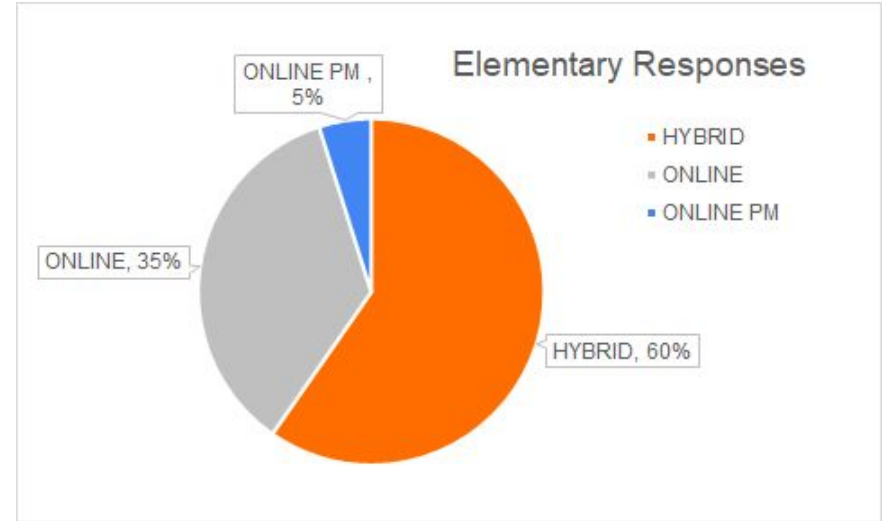
Family Responses by Level:

Secondary Responses



We have responses for 72% of 6-12 students.

Elementary Responses



We have responses for 38% of K-5 students.*

*58% prefer whichever program their current teacher will be teaching.



Board Comments, Questions and Discussion

Health & Safety Preparation and Planning

Washington State

- [Toolkit to Prepare for In-Person Learning.](#)

Can the school(s) implement recommended COVID-19 health and safety measures? School Administrators and Staff	
The risk of COVID-19 spreading in schools depends on the ability of the school to implement DOH's K-12 health and safety measures and LNI employer safety requirements .	
<i>Does the school have the plans, staff, space, and supplies to do the following?</i>	
✓	Protect staff and students at higher risk for severe COVID-19 while ensuring access to learning.
✓	Transport or facilitate drop-off and pick-up of students.
✓	Group students (required in elementary, recommended for middle and high school).
✓	Practice physical distancing of ≥6 feet among students and staff.
✓	Promote frequent hand washing or sanitizing.
✓	Promote and ensure face covering use among students and staff.
✓	Increase cleaning and disinfection.
✓	Improve ventilation.
<i>Are all staff trained on health and safety practices?</i>	



Is the school and health system ready to monitor for and respond to suspected and confirmed cases of COVID-19? Schools and Local Public Health	
COVID-19 cases in the school should be expected. The risk of COVID-19 spreading in schools depends on the ability to quickly identify and respond to suspected and confirmed cases and the level of community transmission.	
✓	Can the school ensure monitoring of symptoms and history of exposure among students and staff? (attestation acceptable)
✓	Is the school prepared to manage students and/or staff who get sick onsite?
✓	Does the school have letters drafted to inform families and staff about confirmed cases or outbreaks? For other languages?
✓	Is there adequate access to testing in the community health system for ill students and staff?
✓	Is there capacity in your local health department to investigate confirmed COVID-19 cases, quarantine their close contacts and assess whether transmission is occurring in the school?
✓	Can local public health monitor the level of community spread to determine when a change in education modality is needed?



Begin Learning Model and Monitor

Health & Safety Preparation and Planning

Washington State - [Toolkit to Prepare for In-Person Learning.](#)

For whom should your community provide in person learning? For School Administrators, Local Health Officers, and Community Stakeholders			
The risk of COVID-19 being introduced into the school and spreading depends on the health and safety measures taken by schools and the level of COVID-19 spread in the community. Consider the following educational modalities based on community transmission and other health and education risks and benefits.			
COVID-19 Activity	HIGH >350 cases/100K/14 days Test positivity >10% Trends in cases and hospitalizations	MODERATE ~50-350 cases/100K /14 days Test positivity 5-10% Trends in cases and hospitalizations	LOW <50 cases/100K/14 days Test positivity <5% Trends in cases and hospitalizations
Education Modality	<p>Phase in in-person learning in groups of 15 or fewer students for pre-K through grade 5 and those with highest needs.</p> <p>Prioritize Pre-K through grade 3, and students in any grade with disabilities, students living homeless, or those farthest from educational justice.</p> <p>If schools can demonstrate the ability to limit transmission in the school environment, add grades 4-5.</p>	<p>Phase in in-person learning.</p> <p>Prioritize Elementary (pre-K - 5) if they are not already receiving in-person learning, and Middle School.</p> <p>If schools can demonstrate the ability to limit transmission in the school environment, add more high school students when case rates are below about 200/100K/14 days.</p>	<p>Provide in-person learning for all students.</p>
Extra-curricular Activities	<p>Cancel or postpone most in-person extra-curricular activities except those allowed under Safe Start and Governor's proclamations on COVID-19.</p>	<p>Extra-curricular activities must follow K-12, applicable Safe Start protocols and Governor's proclamations on COVID-19.</p>	<p>Extra-curricular activities must follow K-12, applicable Safe Start protocols and Governor's proclamations on COVID-19.</p>
Transition	<p>Across all COVID-19 Activity Levels:</p> <ul style="list-style-type: none"> When trends in cases and hospitalizations are flat or decreasing, and the school can demonstrate the ability to limit transmission in the school environment, expand access to in-person learning When trends are increasing, pause expansion of additional in-person learning and maintain access to in-person learning for those who have it. Schools are not required to reduce in-person learning or revert to remote learning based on metrics if the school can demonstrate the ability to limit transmission in the school environment. Consider other health and education risks and benefits to children and their families <p>At any COVID-19 level, transition temporarily to full distance learning for 14 days when school meets criteria in DOH's K-12 Health and Safety Guidance (p 16) or on recommendation of the local health officer.</p>		

Covid Coordinator/Supervisor

Following State Guidance - every school and work site has a Covid Site Coordinator/Supervisor

- Point of contact re: Covid safety, exposure, and procedures/protocols
- Provides contact tracing/information gathering for known or suspected Covid cases
- Serves as a liaison to District Covid Coordinator

Separation Room

A designated space for students who are showing signs of illness while at school to be separated or isolated from others until they can return home

- Student maintains mask wearing and social distancing
- Assigned/trained staff to monitor/support with higher level of PPE required
- Parents notified of appropriate next steps

Screening of Staff/Students

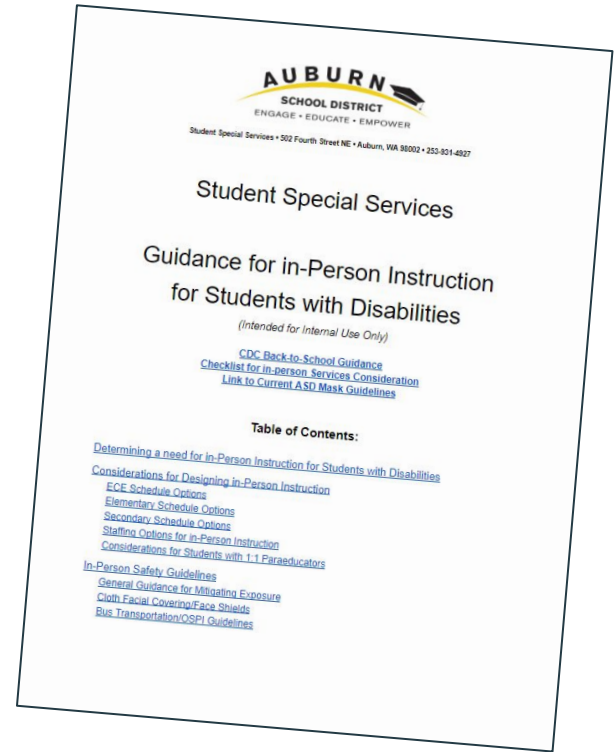
District committee have outlined the process for ensuring staff and student wellness

- Daily Wellness Checks for Staff and Students on Skyward (at-home temperature checks, attesting as symptom free and no known exposure to Covid)
 - Alternate option available: Paper Wellness Verification for Students
- Visual screen of students for signs of illness, including temperature checks if warranted

Systems & Structures

Examples: SSS Guidance; [In-Person Safety Guidelines](#)

Safety/PPE Training

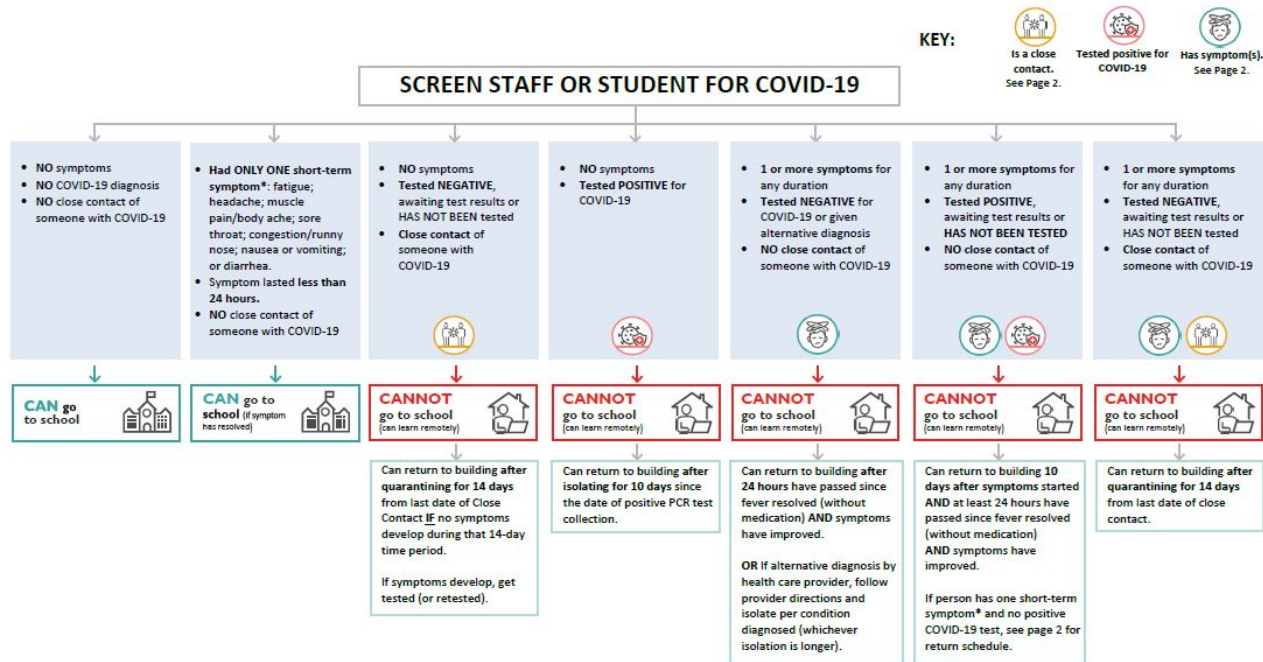


Mitigate Risks

Be Prepared to Respond

Symptom Flowchart

COVID-19 Symptom Flow Chart



Health & Safety Preparation and Planning



**Health & Safety
Workgroup
Recommendations**



- Guidance based upon CDC, Department of Health, Labor & Industries and OSPI
- Implementation of Workgroup Recommendations on
 - Healthy Hygiene Practices
 - Hand Washing & Hand Sanitizer
 - Face Coverings -- [Auburn School District Mask Guidance](#)
 - Physical Distancing
 - Cleaning & Disinfecting
 - Transportation
- PPE Purchased
- Ongoing Training for Administrators and Staff
- Staff Accommodations

Mitigation Keys:

Adhere to Strict Health & Safety Standards

- Educating Staff, Parents, and Students
- Symptom Screening
- Structures and Processes for Responding
- Cohorts/Groups
- 6 ft. Physical Distancing
- Face Coverings
- Hand Hygiene, Cleaning, Ventilation



Board Comments, Questions and Discussion

PK-12 Hybrid & Online Models

- Elementary Hybrid and Online Program
- Secondary Hybrid and Online Program

Elementary Hybrid and Online Programs

- Hybrid Program & Schedule
- Online Program & Schedule

Elementary Programming

Grade PK-5 students have classes delivered in one of the models below, that fits the needs of the family:

- **In-person** (“Hybrid”) AM or PM schedule on the school site, with On-line specialist support during the at-home portion of the day
- **100% Online** Learning (day time option or current PM program)

Students assigned to the teachers and model (Hybrid or Online learning) for the **remainder of the year**

Elementary Hybrid (AM or PM) Program & Schedule

Monday - **All students Online only*

AM - *Same as current schedule, times will adjust slightly (PLCs then...)*

- Whole class meeting with both AM and PM groups together
- Individual and Small Group Support w/Classroom Teacher and/or Specialists (PE, Music, Library, LS)
- EL/Title/LAP/SPED Instruction

PM

- Student Contact, Parent Contact, Distance Learning Planning

Tuesday-Friday - *In-person AM OR PM for about 2.5hrs daily*

- School Early Start & Late Start times
- Core Instruction w/classroom teacher
- Meals eaten at home (*taken home day before*)
- When not in school:
 - PE/Music/Library/Learning Specialist Time *via Google Meet*
 - Title/LAP/EL/SPED Instruction *via Google Meet*
 - Independent Learning Time

*Individual students may need in-person instruction based on IEP team/for special services.

Elementary Online Program & Schedule

**“Day Program” Monday: *All students
Online only**

AM - Same as current schedule, times will adjust slightly (PLCs then...)

- Whole class meeting with both AM and PM groups
- Individual and Small Group Support w/Classroom Teacher and/or Specialists
- EL/Title/LAP/SPED Instruction

PM

- Student Contact, Parent Contact, Distance Learning Planning

Tuesday-Friday 100% On-line AM OR PM for about 2.5hrs daily (mirrors Hybrid student day)

- School Early Start & Late Start times
- Google Meets:
 - Core Instruction w/classroom teacher
 - When not with classroom teacher
 - PE/Music/Library/Learning Specialist Time
 - Title/LAP/EL/SPED Instruction
 - Independent Learning Time
- Time at midday for meal pickup at serving sites

PM Program - 4:30-7:45pm daily Monday-Friday (no changes to current model)

Elementary Programming

Grade PK-5 students will have:

- AM or PM Instruction **in-person** or **On-line** from their grade level classroom teacher
- PreK will also be in an AM or PM session, on an A/B schedule T/TH or Wed/Fri
- Specialist Time (PE, Music, Library, Learning Specialists, etc.) **On-line** only
- Any special services they need: Special education, English Language (EL) services, Title/LAP support **On-line** only
- Meals (breakfast and lunch taken home from school each day)

Secondary Hybrid and Online Programs

- Hybrid Program & Schedule
- Online Program & Schedule

Secondary Programming

Grade 6-12 students have classes delivered in one of the models below, that fits the needs of the family:

- In-person alternating A/B schedule on the school site. With independent learning on the stay-home days **OR**
- 100% Online Learning, with independent learning time assigned by the teacher

Students will be assigned to classes and model of instruction (hybrid or Online learning) for the remainder of the year so we can quickly pivot to hybrid as soon as it is safe to do so.

Secondary Hybrid(A/B) Program & Schedule

Monday: ***All students online only**

- Periods 1 or 4 for 25 min
- Periods 2 or 5 for 25 min
- Periods 3 or 6 for 25 min

Students' PM schedule may include additional time in any of the above classes. Independent work time.

Tuesday - Friday: Grade 6-12 students receive **in-person** on either a Tuesday/Thursday or Wednesday/Friday schedule. Students will complete independent learning on their "at home" days

Approximately 75 minute periods 1-3 or 4-6 and Period 8 for 30 minutes on in-person days

Meals served on campus

Passing times to allow for cleaning, social distancing

*Individual students may need in-person instruction based on IEP team/for special services.

Secondary Online Learning Program & Schedule

Mondays: ***All students Online only**

- Periods 1 or 4 for 25 min
- Periods 2 or 5 for 25 min
- Periods 3 or 6 for 25 min

Students' PM schedule may include additional time in any of the above classes. Independent work time.

Tuesday - Friday: Grade 6-12 students receive instruction **100% online and** complete independent learning as assigned by their classroom teacher

Approximately 75 minute periods 1-3 or 4-6 and Period 8 for 30 minutes

Some high school courses may only be offered through APEX online in a self-paced model with teacher oversight

*Individual students may need in-person instruction based on IEP team/for special services.

Secondary Programming

Grade 6-12 students have:

- Access to the classes they need to graduate high school
- 3 periods/quarter student schedule for quarters 3 and 4
- Receive any special services they need: Special education, English Language (EL) services, Title/LAP support
- Meals provided on campus



Board Comments, Questions and Discussion

Expanding Access for Students Prior to Hybrid

- Students with the greatest academic needs
- Mental and Behavioral Health
- Sports & Activities

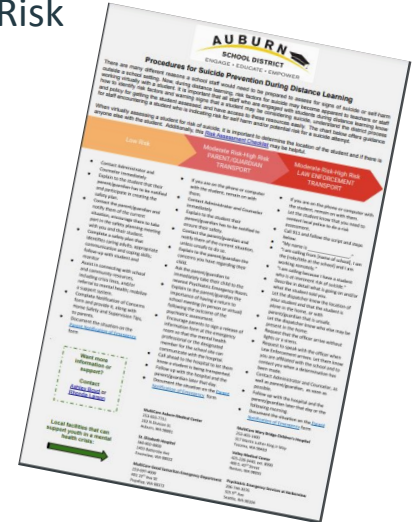
Expanding access for those “most at risk”

- *The Decision Tree supports limited in-person services for students with the highest needs not being met in distance learning*
- Prior to Hybrid Launch
 - Students “not connecting”, at risk of failure (academic, mental health needs, etc.)
 - Bring on-site in a space supervised by staff to support students on their Google Meet with their classroom teacher(s) for part of the day
 - Expand services for students with IEPs

Mental Health

- Provider alert regarding increased concern of suicide risk in youth during COVID-19
 - Addressing critical needs of students as we phase toward hybrid/in-person through services to students with significant mental and behavioral health needs
 - Any staff (district or other providers) working in-person will receive safety training

- Systems of Support
 - Counselors
 - Social Emotional Learning
 - Substance Use Prevention/Intervention
 - Mental Health Partners
 - Identifying Students at Risk



Expanding Access for Athletics & Activities

- Anticipate Revised Extracurricular Guidelines coming out soon based on 12/16/20 changes
- High School Seasons - Out of Season contact (“summer window”) through 1/22/21
 - **Season 2** Feb. 1-March 21, **Season 3** March 15-May 2, **Season 4** April 26-June 13
 - NSPL High School/WIAA adjustments to season schedules anticipated based on infection rates
- ASD Plan for Athletics & Activities - Hybrid and Auburn Online students can participate
 - *Currently* - Sport specific virtual meetings through 1/22/21 during “summer window”
 - Near Future - Allow limited in-person workouts/meetings for athletics/activities
 - Outdoor, pods of 6 w/distancing (and any other updated guidance)



Board Comments, Questions, and Discussion



Next Steps