

Planning shapes the places where people live and work and the country we live in. It plays a key role in supporting the Government's wider economic, social and environmental objectives and for sustainable communities.



PLANNING

Planning Policy Statement 10:
Planning for Sustainable Waste Management

Planning Policy Statement 10: Planning for Sustainable Waste Management

Planning Policy Statements (PPS) set out the Government's national policies on different aspects of land-use planning in England. This PPS replaces Planning Policy Guidance Note 10, *Planning and Waste Management*, published in 1999 and forms part of the national waste management plan for the UK.

The policies in this PPS should be taken into account by waste planning authorities in discharging their responsibilities¹; by regional planning bodies in the preparation of regional spatial strategies; by the Mayor of London in relation to the Spatial Development Strategy in London²; and, in general, by local planning authorities in the preparation of local development documents. They may also be material to decisions on individual planning applications. These policies complement other national planning policies and should be read in conjunction with Government policies for sustainable waste management, in particular those set out in the national waste strategy³.

A companion guide provides practice guidance on the implementation of the policies set out in this PPS.

¹ See Annex A

² London is covered by its own legislation – the Greater London Authority Act 1999, which places responsibility for strategic planning with the Mayor, requiring him/her to produce a Spatial Development Strategy, also known as the 'London Plan'. References to regional planning bodies and regional spatial strategies in this PPS include the Mayor of London and the Spatial Development Strategy other than where indicated.

³ Currently Waste Strategy 2000 as amended

© Crown Copyright 2005 (first published July 2005, amended March 2011).

Copyright in the typographical arrangement and design rests with the Crown.

Published for the Department for Communities and Local Government, under licence from the Controller of Her Majesty's Stationery Office.

The text in this document (excluding the Royal Arms and other departmental or agency logos) may be reproduced free of charge in any format or medium providing it is reproduced accurately and not used in a misleading context.

The material must be acknowledged as Crown copyright and the title of the document specified. Where we have identified any third party copyright material you will need to obtain permission from the copyright holders concerned.

For any other use of this material please write to: Information Policy Team, National Archives, Kew, Richmond, Surrey TW9 4DU or e-mail: psi@nationalarchives.gsi.gov.uk

ISBN: 978 011 7539501

Printed in the United Kingdom for the Stationery Office.

Contents

	Page number
Planning for Sustainable Waste Management	1
Sustainable Waste Management	5
Key Planning Objectives	5
Decision-Making Principles	6
Regional Spatial Strategy	7
Preparing the Regional Spatial Strategy	8
Waste Requiring Management	8
Identifying a Pattern of Waste Management Facilities	9
Implementing the Regional Spatial Strategy	10
Regional Technical Advisory Body	10
Local Development Documents	10
Identifying Land for Waste Management Facilities	11
Identifying Suitable Sites and Areas	11
Determining Planning Applications	12
Approach – Waste Planning Authorities	12
– Unallocated Sites	12
– Responsibilities	13
– Local Environmental Impacts	13
– Health	13
– Planning Conditions	14
Approach – All Planning Authorities	14
– Good Design	15
Working In Constructive Partnership	15
Monitoring and Review	15
Annex A – Waste Planning Authority Responsibilities	17
Annex B – Shared Principles of Sustainable Development	18
Annex C – Waste Hierarchy	19
Annex D – Role and Composition of a Regional Technical Advisory Body	20
Annex E – Locational Criteria	22
Annex F – London	25

SUSTAINABLE WASTE MANAGEMENT

1. The overall objective of Government policy on waste, as set out in the strategy for sustainable development⁴, is to protect human health and the environment by producing less waste and by using it as a resource wherever possible. By more sustainable waste management, moving the management of waste up the ‘waste hierarchy’ of prevention, preparing for reuse, recycling, other recovery, and disposing only as a last resort, the Government aims to break the link between economic growth and the environmental impact of waste⁵. This means a step-change in the way waste is handled and significant new investment in waste management facilities. The planning system is pivotal to the adequate and timely provision of the new facilities that will be needed.
2. Positive planning has an important role in delivering sustainable waste management:
 - through the development of appropriate strategies for growth, regeneration and the prudent use of resources; and,
 - by providing sufficient opportunities for new waste management facilities of the right type, in the right place and at the right time.

KEY PLANNING OBJECTIVES

3. Regional planning bodies and all planning authorities should, to the extent appropriate to their responsibilities, prepare and deliver planning strategies that:
 - help deliver sustainable development through driving waste management up the waste hierarchy, addressing waste as a resource and looking to disposal as the last option, but one which must be adequately catered for;
 - provide a framework in which communities take more responsibility for their own waste, and enable sufficient and timely provision of waste management facilities to meet the needs of their communities;
 - help implement the national waste strategy, and supporting targets, are consistent with obligations required under European legislation and support and complement other guidance and legal controls such as those set out in the Waste Management Licensing Regulations 1994;

⁴ Department for Environment, Food and Rural Affairs (March 2005) *Securing The Future* See Annex B for the set of shared UK principles

⁵ See Annex C

- help secure the recovery or disposal of waste without endangering human health and without harming the environment, and enable waste to be disposed of in one of the nearest appropriate installations;
- reflect the concerns and interests of communities, the needs of waste collection authorities, waste disposal authorities and business, and encourage competitiveness;
- protect green belts but recognise the particular locational needs of some types of waste management facilities when defining detailed green belt boundaries and, in determining planning applications, that these locational needs, together with the wider environmental and economic benefits of sustainable waste management, are material considerations that should be given significant weight in determining whether proposals should be given planning permission;
- ensure the design and layout of new development supports sustainable waste management.

DECISION-MAKING PRINCIPLES

4. Regional planning bodies and all planning authorities should, to the extent appropriate to their responsibilities, adhere to the following principles in preparing planning strategies:
 - regional planning bodies should prepare regional spatial strategies (RSS) which aim to provide sufficient opportunities to meet the identified needs of their area for waste management for all waste streams. In turn, planning authorities should prepare local development documents that reflect their contribution to delivering the RSS;
 - waste management should be considered alongside other spatial planning concerns, such as transport, housing, economic growth, natural resources and regeneration, recognising the positive contribution that waste management can make to the development of sustainable communities, and should be integrated effectively with other strategies including municipal waste management strategies;
 - the planned provision of new capacity and its spatial distribution should be based on clear policy objectives, robust analysis of available data and information, and an appraisal of options. Policy objectives should be in line with the planning policies set out in this PPS and be linked to measurable indicators of change;

- sustainability appraisal⁶ (incorporating strategic environmental assessment) should be applied so as to shape planning strategies that support the Government’s planning objectives for waste management set out in this PPS;
 - indicators should be monitored and reported on in regional planning bodies’ and waste planning authorities’ annual monitoring reports. Such monitoring should be the basis on which regional planning bodies and waste planning authorities periodically review and roll forward their waste planning strategies. Reviews should reflect any changes to the national waste strategy and occur at least every five years, or sooner if there are signs of under-provision of waste management capacity or over-provision of disposal options where these would undermine movement up the waste hierarchy.
5. Waste planning authorities should adhere to the following principles in determining planning applications:
- controls under the planning and pollution control regimes should complement rather than duplicate each other and conflicting conditions should be avoided;
 - work effectively with pollution control authorities to ensure the best use is made of expertise and information, and that decisions on planning applications and pollution control permits are delivered expeditiously;
 - in considering planning applications for waste management facilities before development plans can be reviewed to reflect this PPS, have regard to the policies in this PPS as material considerations which may supersede the policies in their development plan. Any refusal of planning permission on grounds of prematurity will not be justified unless it accords with the policy in *The Planning System: General Principles*⁷.

REGIONAL SPATIAL STRATEGY

6. The RSS should include a concise strategy for waste management. The strategy for waste management should be a key component of the RSS, be formulated in conjunction with other spatial concerns and sit within the RSS when issued in its final form by the Secretary of State. The strategy for waste management should:
- look forward for a fifteen to twenty year period;

⁶ Office of the Deputy Prime Minister (September 2004) *Sustainability Appraisal of Regional Spatial Strategies and Local Development Frameworks*, consultation paper (forthcoming)

⁷ Office of the Deputy Prime Minister (January 2005) *The Planning System: General Principles*

- comprise a distribution of waste tonnage requiring management, a pattern of waste management facilities of national, regional or sub-regional significance, and supporting policies.

Preparing the regional spatial strategy

7. Regional planning bodies should work alongside their constituent planning authorities to develop a realistic and responsible approach to future waste management. In doing so, they should draw from local planning strategies where these reflect the policies set out in this PPS and take account of:
 - any waste management requirement identified nationally, the Government's latest advice on forecasts of waste arisings and the proportion of waste that can be recycled;
 - waste arisings across the region, and from constituent waste planning authority areas;
 - the broad development strategy set out in the RSS and any particular waste management needs arising from the regional economy, including for hazardous wastes and for recycling construction and demolition waste;
 - municipal waste management strategies, which will set out how waste disposal authorities will meet their obligations under the Landfill Allowance Trading Scheme;
 - likely demand for waste management capacity arising from neighbouring regions and, where relevant, Wales and Scotland, where meeting this demand would be consistent with the policies in this PPS; and,
 - opportunities to accommodate new or expanded waste management facilities, including for disposal of the residues from treated wastes.

Waste requiring management

8. In considering the need for waste management in their area, regional planning bodies should in particular identify the tonnages of waste requiring management for the following waste sectors:
 - commercial and industrial; and,
 - municipal.

9. The tonnages of waste requiring management should be apportioned by waste planning authority area, or to sub-regions comprising more than one waste planning authority where waste planning authorities have indicated through their local development schemes that they intend to work jointly on development plan documents.
10. The proposed apportionment should derive from the considerations set out in paragraph 7, accord with the key planning objectives and be expressed as annual rates. Annual rates may vary over the period covered by the strategy to reflect, in particular, the impact of policies to reduce the level of waste arising. Spurious precision should be avoided. The annual rates are not intended to be a detailed forecast but to provide a benchmark for the preparation of local development documents. They also provide the basis for annual monitoring as part of a continuous planning process⁸.

Identifying a pattern of waste management facilities

11. Regional planning bodies should consider the need for additional waste management capacity of regional or sub-regional significance and reflect any requirement for waste management facilities identified nationally. The strategy for waste management should provide a strategic framework for the preparation of local development documents by identifying the waste management facilities required to satisfy any identified need and their distribution across the region. In drawing up this pattern of waste management facilities, regional planning bodies should take into account:
 - the considerations set out in paragraph 7;
 - any need for waste management, including for disposal of the residues from treated wastes, arising in more than one waste planning authority area but where only a limited number of facilities would be required; and,
 - the extent to which existing, and consented waste management capacity not yet operational would satisfy any identified need.
12. The pattern of waste management facilities should look forward over a sufficient period to prove attractive to investment but not constrain movement up the waste hierarchy. Regional planning bodies should identify in the RSS the broad locations where the pattern of waste management facilities should be accommodated.

⁸ See Office of the Deputy Prime Minister (2004) Planning Policy Statement 11 *Regional Spatial Planning Strategies*

Implementing the regional spatial strategy

13. The strategy for waste management confirmed by the Secretary of State following public examination⁹ should be carried forward into local development documents and will inform the preparation and review of municipal waste management strategies. In preparing local development documents, there should be no need to reopen consideration of either its principles or the annual rates of waste to be managed.
14. Where circumstances have changed significantly, or there is important new information to be taken into account, the presumption should be that the RSS should be revised before local development documents are next reviewed. Where this is not practicable, revisions to annual rates of waste to be managed, or to the pattern of waste management facilities, should take place in the context of advice from the regional planning body, information from the regional planning body's and the waste planning authority's monitoring reports, comments from other stakeholders and advice from the Government Office.

Regional Technical Advisory Body

15. The regional planning body should convene a broadly-based regional technical advisory body (RTAB) to provide advice on the preparation of the strategy for waste management in the RSS and its implementation¹⁰. The expected role of an RTAB is set out at Annex D. To undertake this role, an RTAB will need to assemble data and information on waste. Regional planning bodies, working through their RTABs as appropriate, should therefore co-ordinate the programme of data collection and monitoring undertaken by constituent waste planning authorities and maintain consistency of approach.

LOCAL DEVELOPMENT DOCUMENTS

16. The core strategy of a waste planning authority should set out policies and proposals for waste management in line with the RSS and ensure sufficient opportunities for the provision of waste management facilities in appropriate locations including for waste disposal. The core strategy should both inform and in turn be informed by any relevant municipal waste management strategy. It should look forward for a period of at least ten years from the date of adoption and should aim to look ahead to any longer-term time horizon that is set out in the RSS.

⁹ See Annex F for London

¹⁰ See Annex F for London

Identifying land for waste management facilities

17. Waste planning authorities should identify in development plan documents sites and areas suitable for new or enhanced waste management facilities for the waste management needs of their areas. Waste planning authorities should in particular:
 - allocate sites to support the pattern of waste management facilities set out in the RSS in accordance with the broad locations identified in the RSS; and,
 - allocate sites and areas suitable for new or enhanced waste management facilities to support the apportionment set out in the RSS.
18. In doing so, waste planning authorities should:
 - be able to demonstrate how capacity equivalent to at least ten years of the annual rates set out in the RSS could be provided;
 - identify the type or types of waste management facility that would be appropriately located on the allocated site or in the allocated area, taking care to avoid stifling innovation in line with the waste hierarchy;
 - avoid unrealistic assumptions on the prospects, for the development of waste management facilities, or of particular sites or areas, having regard in particular to any ownership constraint which cannot be readily freed, other than through the use of compulsory purchase powers.
19. Allocations that are not taken up should be reviewed and updated as development plan documents are reviewed and rolled forward, at least every five years.

Identifying suitable sites and areas

20. In searching for sites and areas suitable for new or enhanced waste management facilities, waste planning authorities should consider:
 - opportunities for on-site management of waste where it arises;
 - a broad range of locations including industrial sites, looking for opportunities to co-locate facilities together and with complementary activities¹¹.
21. In deciding which sites and areas to identify for waste management facilities, waste planning authorities should:

¹¹ reflecting the concept of resource recovery parks

- (i) assess their suitability for development against each of the following criteria:
 - the extent to which they support the policies in this PPS;
 - the physical and environmental constraints on development, including existing and proposed neighbouring land uses (see Annex E);
 - the cumulative effect of previous waste disposal facilities on the well-being of the local community, including any significant adverse impacts on environmental quality, social cohesion and inclusion or economic potential;
 - the capacity of existing and potential transport infrastructure to support the sustainable movement of waste, and products arising from resource recovery, seeking when practicable and beneficial to use modes other than road transport.
- (ii) give priority to the re-use of previously-developed land, and redundant agricultural and forestry buildings and their curtilages.

DETERMINING PLANNING APPLICATIONS

Approach – waste planning authorities

22. Development plans form the framework within which decisions on proposals for development are taken. It is important that plans are kept up-to-date and properly reflect national policy. When proposals are consistent with an up-to-date development plan, waste planning authorities should not require applicants for new or enhanced waste management facilities to demonstrate a quantitative or market need for their proposal.
23. In the interim period before the development plan is updated to reflect the policies in this PPS, planning authorities should ensure proposals are consistent with the policies in this PPS and avoid placing requirements on applicants that are inconsistent.

Unallocated sites

24. Planning applications for sites that have not been identified, or are not located in an area identified, in a development plan document as suitable for new or enhanced waste management facilities should be considered favourably when consistent with:
 - (i) the policies in this PPS, including the criteria set out in paragraph 21;
 - (ii) the waste planning authority's core strategy.

25. In the case of waste disposal facilities, applicants should be able to demonstrate that the envisaged facility will not undermine the waste planning strategy through prejudicing movement up the waste hierarchy.

Responsibilities

26. In considering planning applications for waste management facilities, waste planning authorities should concern themselves with implementing the planning strategy in the development plan and not with the control of processes which are a matter for the pollution control authorities.
27. The planning and pollution control regimes are separate but complementary. Pollution control is concerned with preventing pollution through the use of measures to prohibit or limit the release of substances to the environment to the lowest practicable level. It also ensures that ambient air and water quality meet standards that guard against impacts to the environment and human health. The planning system controls the development and use of land in the public interest and should focus on whether development is an acceptable use of the land, and the impacts of those uses on the development and use of land¹². Waste planning authorities should work on the assumption that the relevant pollution control regime will be properly applied and enforced.
28. Waste planning and pollution control authorities should work closely to ensure integrated and timely decisions under the complementary regimes. This can be assisted by applicants preparing and submitting planning and pollution control applications in parallel.

Local environmental impacts

29. In considering planning applications for waste management facilities waste planning authorities should consider the likely impact on the local environment and on amenity (see Annex E). These can also be concerns of the pollution control authorities and there should be consistency between consents issued under the planning and pollution control regimes.

Health

30. Modern, appropriately located, well-run and well-regulated, waste management facilities operated in line with current pollution control techniques and standards should pose little risk to human health. The detailed consideration of a waste management process and the implications, if any, for human health is the responsibility of the pollution control

¹² See ODPM (2004) Planning Policy Statement 23 *Planning and Pollution Control* (TSO)

authorities. However, planning operates in the public interest to ensure that the location of proposed development is acceptable and health can be material to such decisions.

31. Where concerns about health are raised, waste planning authorities should avoid carrying out their own detailed assessment of epidemiological and other health studies. Rather, they should ensure, through drawing from Government advice and research¹³ and consultation with the relevant health authorities and agencies, that they have advice on the implications for health, if any, and when determining planning applications consider the locational implications of such advice. In turn, the relevant health authorities and agencies will require sufficient understanding of the proposed waste management process to provide considered advice. A concurrent process and a transparent relationship between the planning and pollution control regimes will help facilitate this.

Planning conditions

32. It should not be necessary to use planning conditions to control the pollution aspects of a waste management facility where the facility requires a permit from the pollution control authority. In some cases, however, it may be appropriate to use planning conditions to control other aspects of the development. For example, planning conditions could be used in respect of transport modes, the hours of operation where these may have an impact on neighbouring land use, landscaping, plant and buildings, the timescale of the operations, and impacts such as noise, vibrations, odour, and dust from certain phases of the development such as demolition and construction.

Approach – all planning authorities

33. In determining planning applications, all planning authorities should, where relevant, consider the likely impact of proposed, non-waste related, development on existing waste management facilities, and on sites and areas allocated for waste management. Where proposals would prejudice the implementation of the waste strategy in the development plan, consideration should be given to how they could be amended to make them acceptable or, where this is not practicable, to refusing planning permission.
34. Proposed new development should be supported by site waste management plans of the type encouraged by the code of practice published by the DTI¹⁴. These do not require formal approval by planning authorities, but are encouraged to identify the volume and type of material to be demolished and/or excavated, opportunities for the reuse and

¹³ including Department of Environment, Food and Rural Affairs (2004) *Review of Environmental and Health Effects of Waste Management: municipal solid waste and similar wastes*

¹⁴ Department of Trade and Industry (2004) *Site Waste Management Plans: guidance for construction contractors and clients*, voluntary code of practice

recovery of materials and to demonstrate how off-site disposal of waste will be minimised and managed.

Good design

35. Good design and layout in new development can help to secure opportunities for sustainable waste management, including for kerbside collection and community recycling as well as for larger waste facilities. Planning authorities should ensure that new development makes sufficient provision for waste management and promote designs and layouts that secure the integration of waste management facilities without adverse impact on the street scene or, in less developed areas, the local landscape.
36. Waste management facilities in themselves should be well-designed, so that they contribute positively to the character and quality of the area in which they are located. Poor design is in itself undesirable, undermines community acceptance of waste facilities and should be rejected.

Working in constructive partnership

37. Delay can arise through poorly conceived, designed and executed proposals. Planning applications for waste management facilities that cut across up-to-date development plans prepared in consultation with local communities give rise to justifiable frustration. The Government therefore encourages industry to continue to work alongside local communities, in support of planning and pollution control authorities, and in ways consistent with sustainable development.
38. Applicants for planning permission to develop waste management facilities should expect expeditious and sympathetic handling of planning applications on sites and in locations identified in development plan documents, where their proposals reflect the planning strategy for waste management and policies set out in the development plan.

MONITORING AND REVIEW

39. Effective monitoring and review is essential to securing sustainable waste management. The successful implementation of spatial strategies for waste management depends on active stewardship regionally and locally. Where monitoring suggests that implementation is not being achieved in line with an agreed strategy it is important to respond effectively. Annual

monitoring reports should both report performance and describe the action intended to correct any adjustment to implementation¹⁵.

40. Regional and local monitoring should focus on the key actions and outcomes that underpin delivery and on contextual indicators that measure changes with direct bearing on an agreed strategy. As a minimum, monitoring should include changes in the stock of waste management facilities; waste arisings; and, the amounts of waste recycled, recovered or going for disposal.
41. It is important that there are clear arrangements to ensure close linkages between the production of regional and local monitoring reports, and that these arrangements integrate across the range of bodies that can contribute to effective monitoring. In particular, the Environment Agency has a pivotal role to play in the provision of relevant information. The annual monitoring co-ordinated by regional planning bodies and undertaken by constituent waste planning authorities should therefore be closely co-ordinated with data collection by the Environment Agency.

¹⁵ See ODPM (2004) Planning Policy Statement 11 *Regional Spatial Strategies*; ODPM (2004) Planning Policy Statement 12 *Local Development Frameworks*, both published by TSO; and supporting practice guidance (ODPM).

Annexes



ANNEX A

Waste planning authority responsibilities

The term waste planning authority applies to the local authorities with responsibility for land-use planning control for waste management.

In county council areas where there is a district council The Town and Country Planning (Prescription of County Matters) (England) Regulations 2003 prescribe the following classes of operations and uses of land as ‘county matters’:

- (i) the use of land, the carrying out of building, engineering or other operations, or the erection of plant or machinery used or proposed to be used, wholly or mainly for the purposes of recovering, treating, storing, processing, sorting, transferring or depositing of waste;
- (ii) operations and uses ancillary to the purposes in (i) above, including development relating to access to highways.

Therefore all planning applications relating to the use of land (and buildings) or the erection of buildings, plant or machinery for the purposes of waste management are ‘county matters’ and are to be determined by the county council. The only exception to this would be where a district council proposed to develop a waste management facility on its own land. Such developments are controlled by the Town and Country Planning General Regulations 1992.

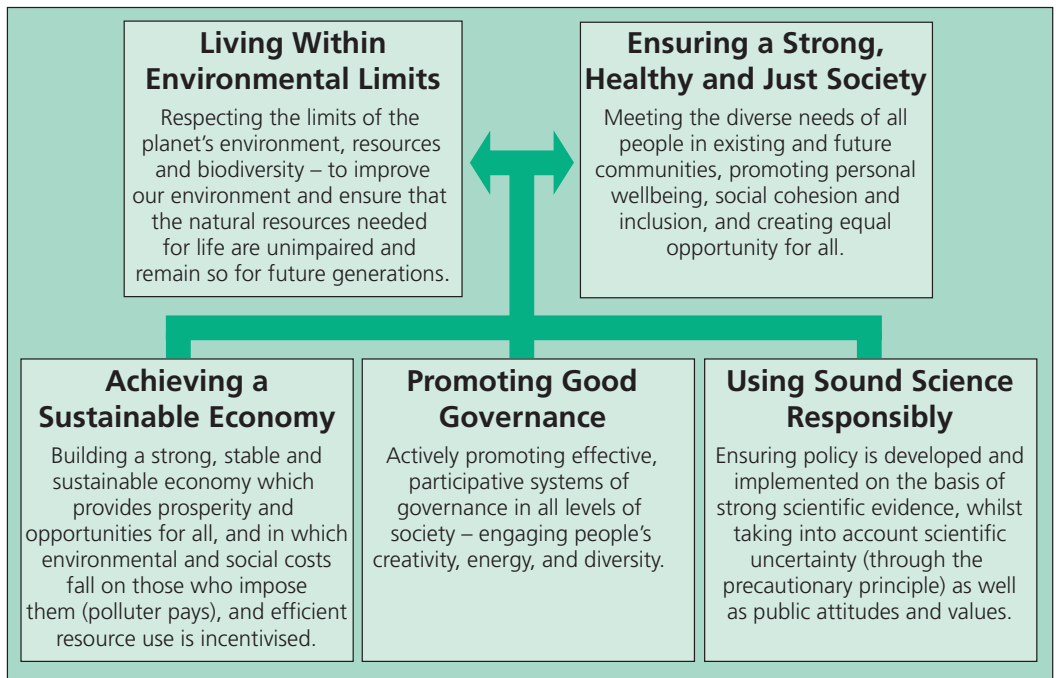
The term ‘waste’ is not defined in the 2003 Regulations but the effect of paragraph 11 of Schedule 4 to the Waste Management Licensing Regulations 1994 is to provide that it includes ‘Directive waste’ – which is defined in Regulation 1(3) of the 1994 Regulations. Subject to this, the term ‘waste’ in the 2003 Regulations assumes its normal and natural meaning.

Difficulties may arise in respect of applications that are properly to be decided by a district planning authority but which involve the use of large amounts of engineering fill for such purposes as levelling or landscaping of sites or the construction of bunds or embankments. In such cases, it may be appropriate to question developers about the purpose of certain types of proposed development.

ANNEX B

The set of shared principles of sustainable development

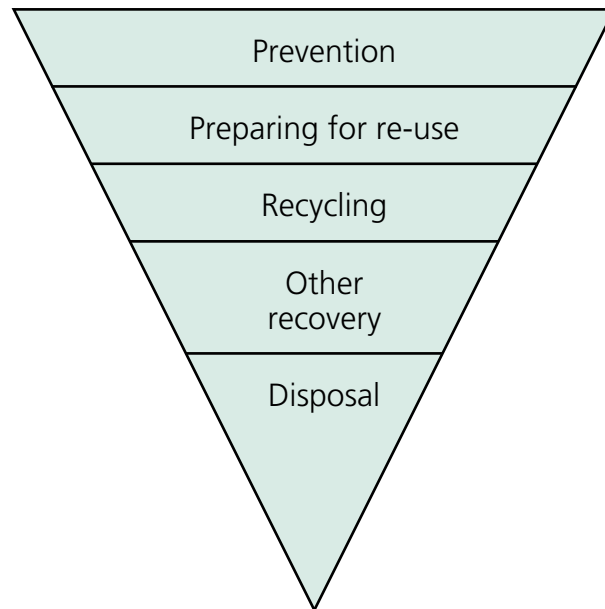
Securing the Future, the UK strategy for sustainable development provides a set of shared principles for sustainable development. They bring together and build on the various previously existing UK principles to set out an overarching approach.



ANNEX C

The Waste Hierarchy

The waste hierarchy



- the most effective environmental solution is often to reduce the generation of waste, including the re-use of products – *prevention*¹⁶
- products that have become waste can be checked, cleaned or repaired so that they can be re-used – *preparing for re-use*
- waste materials can be reprocessed into products, materials, or substances – *recycling*
- waste can serve a useful purpose by replacing other materials that would otherwise have been used – *other recovery*
- the least desirable solution where none of the above options is appropriate – *disposal*.

¹⁶ The full definition of each level of the waste hierarchy is set out in Article 3 of the revised Waste Framework Directive (2008/98/EC)

ANNEX D

Role and Composition of a Regional Technical Advisory Body

Regional technical advisory bodies (RTABs) provide advice to regional planning bodies on the implications of waste management for the development and implementation of the RSS. In undertaking this role an RTAB should:

- (i) reflect, in accordance with advice from the regional planning body, the expectations set out in the regional participation statement;
- (ii) consider national policy expectations and requirements;
- (iii) consider and interpret national data as they apply to the region;
- (iv) work with neighbouring regions and countries to identify cross-regional concerns, including movements of waste;
- (v) receive and interpret relevant data from the Environment Agency and local authorities in the region;
- (vi) receive and interpret intelligence on local considerations on the development of capacity from planning authorities and other bodies;
- (vii) review and appraise data and options at the strategic level;
- (viii) advise on the preparation of a strategy for waste management for inclusion in the RSS;
- (ix) monitor the implementation of the strategy for waste management in the RSS, including relevant contextual indicators, implementation through local development documents and the delivery of capacity;
- (x) provide regular reports to the regional planning body including recommendations as appropriate for changes to the strategy in the light of this monitoring.

To undertake this role effectively an RTAB will need to be broadly-based, drawing from those with a direct interest in and knowledge of sustainable waste management including:

- the Regional Assembly and its Regional Development Agency;
- the Environment Agency;
- waste planning authorities;

- waste collection and disposal authorities;
- Government Office;
- industry and commerce;
- the waste management industry;
- and,
- key Non-Government Organisations.

ANNEX E

Locational Criteria

In testing the suitability of sites and areas against the criteria set out in paragraph 20, waste planning authorities should consider the factors listed below. They should also bear in mind the envisaged waste management facility in terms of type and scale, taking account of best available technologies (not involving excessive costs). Advice on likely impacts and the particular issues that arise with specific types and scale of waste management facilities is given in accompanying practice guidance.

a. protection of water resources

Considerations will include the proximity of vulnerable surface and groundwater. For landfill or land-raising, geological conditions and the behaviour of surface water and groundwater should be assessed both for the site under consideration and the surrounding area. The suitability of locations subject to flooding will also need particular care.

b. land instability

Locations, and/or the environs of locations, that are liable to be affected by land instability will not normally be suitable for waste management facilities.

c. visual intrusion

Considerations will include (i) the setting of the proposed location and the potential for design-led solutions to produce acceptable development; (ii) the need to protect landscapes of national importance (National Parks, Areas of Outstanding Natural Beauty and Heritage Coasts).

d. nature conservation

Considerations will include any adverse effect on a site of international importance for nature conservation (Special Protection Areas, Special Areas of Conservation and RAMSAR Sites) or a site with a nationally recognised designation (Sites of Special Scientific Interest, National Nature Reserves).

e. historic environment and built heritage

Considerations will include any adverse effect on a site of international importance (World Heritage Sites) or a site or building with a nationally recognised designation (Scheduled Monuments, Conservation Areas, Listed Buildings, Registered Historic Battlefields and Registered Parks and Gardens).

f. traffic and access

Considerations will include the suitability of the road network and the extent to which access would require reliance on local roads.

g. air emissions, including dust

Considerations will include the proximity of sensitive receptors and the extent to which adverse emissions can be controlled through the use of appropriate and well-maintained and managed equipment and vehicles.

h. odours

Considerations will include the proximity of sensitive receptors and the extent to which adverse odours can be controlled through the use of appropriate and well-maintained and managed equipment.

i. vermin and birds

Considerations will include the proximity of sensitive receptors. Some waste management facilities, especially landfills which accept putrescible waste, can attract vermin and birds. The numbers, and movements of some species of birds, may be influenced by the distribution of landfill sites.

Where birds congregate in large numbers, they may be a major nuisance to people living nearby. They can also provide a hazard to aircraft at locations close to aerodromes or low flying areas. As part of the aerodrome safeguarding procedure (ODPM Circular 1/2003¹⁷) local planning authorities are required to consult aerodrome operators on proposed developments likely to attract birds. Consultation arrangements apply within safeguarded areas (which should be shown on the proposals map in the local development framework).

¹⁷ Safeguarding aerodromes, technical sites and military explosives storage areas and on the application of The Town and Country Planning (Safeguarded Aerodromes, Technical Sites and Military Explosives Storage Areas) Direction 2002

The primary aim is to guard against new or increased hazards caused by development. The most important types of development in this respect include facilities intended for the handling, compaction, treatment or disposal of household or commercial wastes.

j. noise and vibration

Considerations will include the proximity of sensitive receptors. The operation of large waste management facilities in particular can produce noise both inside and outside buildings. Intermittent and sustained operating noise may be a problem if not kept to acceptable levels and particularly if night-time working is involved.

k. litter

Litter can be a concern at some waste management facilities.

l. potential land use conflict

Likely proposed development in the vicinity of the location under consideration should be taken into account in considering site suitability and the envisaged waste management facility.

ANNEX F

London

GOL Circular 1/2000 *Strategic Planning In London* provides advice and guidance on the planning arrangements that apply in London.

The Mayor is responsible for strategic planning for London, and in particular for producing a Spatial Development Strategy (SDS) for London. The SDS, also known as the ‘London Plan’, provides a strategic framework for the boroughs’ local development documents and sets out the spatial context for the Mayor’s other policies and strategies.

The advice on waste set out in GOL Circular 1/2000 should be implemented within the framework provided by the policy set out in this PPS. GOL Circular 1/2000 advises that the SDS should play an important role in supporting the Mayor’s municipal waste management strategy through the identification of strategically important locations and sustainable transport routes. In particular, the SDS is expected to:

- evaluate the adequacy of existing strategically important waste management and disposal facilities to meet London’s future needs, both for municipal and other waste streams, and identify the number and type of new or enhanced facilities required to meet those needs; and
- identify opportunities for the location of such facilities and, where appropriate, criteria for the selection of sites.

In doing so, the SDS is expected to reflect the importance of taking a strategic approach to London’s waste management and disposal, such as the need to develop sustainable and practical solutions, the specific duty to promote transportation on the River Thames, and the implications for areas outside the capital.

In considering the role of the regional technical advisory body (RTAB) the Mayor will wish to consider the particular arrangements for waste planning in London and set objectives for the RTAB accordingly.

Under the Town and Country Planning (Mayor of London) Order 2000, certain categories of planning applications, including certain waste facilities, have been identified as requiring referral to the Mayor. These proposals must be referred to the Mayor, who may after due consideration, direct a refusal of permission if he considers that the proposal is contrary to

the London Plan or to good strategic planning in London. The exception to this is electricity-generating stations (incinerators) whose capacity exceeds 50 megawatts. The Secretary of State for DTI deals these with these facilities.

Under the Greater London Authority Act (1999) the Mayor has certain powers of direction which might have consequences for land use planning. The Act states (Section 356(1)):
“Where the Mayor considers that it is necessary for the purposes of implementation of the municipal waste management strategy, he may give to a waste collection authority in Greater London, or a waste disposal authority in Greater London a direction requiring the authority to exercise a function in a manner specified in the direction”.



Published by TSO (The Stationery Office) and available from:

Online

www.tsoshop.co.uk

Mail, Telephone, Fax & E-mail

TSO

PO Box 29, Norwich, NR3 1GN

Telephone orders/General enquiries: 0870 600 5522

Fax orders: 0870 600 5533

E-mail: customer.services@tso.co.uk

Textphone 0870 240 3701

TSO@Blackwell and other Accredited Agents

Customers can also order publications from:

TSO Ireland

16 Arthur Street, Belfast BT1 4GD

Telephone 028 9023 8451 Fax 028 9023 5401

ISBN 978-0-11-753950-1



9 780117 539501