

PLANT
CLOSED

EVERYTHING
MUST SELL!

Public Auction

PLANT CLOSED - SURPLUS TO THE NEEDS OF A

STEEL FABRICATION, E-COAT PAINTING, PRESS BRAKE & LASER FACILITY

3280 GENERAL WILLIAM W. DRIVE - FLORENCE, SC 29506

TUESDAY, MARCH 15TH @ 10:00 A.M. EST

Inspection: Monday, March 14th, From 8:00 A.M. - 4:00 P.M. EST



(6) MAZAK CNC LASERS & FMS CELLS



URETHANE FANUC ROBOTIC CELL



RAS FLEXIBEND 73.30 11GA X 126" CNC FOLDING MACHINE



(3) PULLMAX OPTIMA 250 6-AXIS CNC HYDRAULIC PRESS BRAKES



Asset Sales, Inc.

Corporate Headquarters

301 Post Office Drive, Suite C
Indian Trail, NC 28079

Toll Free 888.800.4442 704.821.4315 Fax 704.821.4325

www.asset-sales.com info@asset-sales.com

European Headquarters

6 Hill End Close, Norwood Green
Halifax, West Yorkshire, HX3 8RH

Tel / Fax 07836.347880

peteram@asset-sales.co.uk



BidSpotter.com

Asset Sales (Canada) Inc.

4310 Prospect Road
Bayside, Nova Scotia, Canada B3Z 1L5
Tel 902.852.5331 Fax 704.821.4325
gmuller@asset-sales.ca



MAZAK 4,000 WATT SUPER TURBO X48 MKII CNC CO² LASER

LASER WORK CELLS

MAZAK 4,000 Watt Super Turbo X48 MKII CNC CO² Laser with 4' x 8' Table, 98.4" x 49.2" x 1.0" Maximum Work Piece Capacity, 105.7" X-Axis Stroke, 50" Y-Axis, 3.9" Z-Axis, Mazatrol L-32B CNC Control, Sheet Lifter, Connected to an Automated 6 Drawer Tower FMS System with Unload / Load, Torit Dust Collector & Control, Chiller, YB-L400A Resonator, sn:181887, mfg.2005

(2) **MAZAK 2,500 Watt Super Turbo X48 Hi Pro-Super Charged CNC CO² Lasers** with 4' x 8' Tables, 98.4" x 49.2" x 0.87" Maximum Work Piece Size, 104.3" X-Axis Stroke, 50" Y-Axis, 3.9" Z-Axis, Mazatrol L-Plus CNC Control, Sheet Lifter, Connected to an Automated 6 Drawer Tower FMS System with Unload / Load, Torit Dust Collector & Controls, Chillers, YB-L250B 7M 6 Resonator, sn:149935 • sn:148450, mfg.2000

(2) **MAZAK 1,500 Watt Model Turbo X48 Champion CNC CO² Lasers** with 4' x 8' Tables, 98.4" x 49.2" x 0.47" Maximum Work Piece Size, 104.3" X-Axis Stroke, 50" Y-Axis, 3.9" Z-Axis, Mazatrol L-32B CNC Control, Sheet Lifter, Connected to an Automated 6 Drawer Tower FMS System with Unload / Load, Torit Dust Collector & Controls, (2) Chillers, YB-L150B 7M Resonator, sn:149930 • sn:149932, mfg.2000

www.asset-sales.com



2000

FMS CELL

(2) MAZAK 2,500 WATT SUPER TURBO X48 HI PRO-SUPER CHARGED CNC CO² LASERS



2000

FMS CELL

(2) MAZAK 1,500 WATT MODEL TURBO X48 CHAMPION CNC CO² LASERS



MAZAK 2,000 WATT SPACE GEAR 48 5-AXIS CNC CO² LASER



RAS FLEXIBEND 73.30 11 GA X 126" CNC FOLDING MACHINE



FINN-POWER (L&P) LASER & PUNCH CNC LASER / PUNCH

LASER & LASER COMBO PUNCH CELL

MAZAK 2,000 Watt Space Gear 48 5-Axis CNC CO² Laser with 4' x 8' Table, 98.4" x 49.2" x 0.63" Maximum Work Piece Capacity, 109.3" X-Axis Stroke, 50" Y-Axis, 14.6" Z-Axis, +/- 345° A-Axis, +/- 135° B-Axis, Mazak & Fanuc L64 Fanuc Series 160i-L, Tube Cutting if Needed, Safety System Mirror, Roto Chuck, Chiller, sn:148453, mfg.2000

FINN-POWER (L&P) Laser & Punch Model LP-6 SWC CNC Laser / Punch with 33 Ton Punching Force, 33 Ton Maximum Working Pressure, 60" x 120" Maximum Sheet Size, Sheet Lifter, 2500 Watt Laser, Rofin TR025 Resonator, Chiller, Dust Collection / Filter System, Brush Table Tops, Chip Conveyor, PC Control, sn:11.22-LP612604, mfg.2004

CNC FOLDING MACHINE

RAS Flexibend 73.30 11 GA x 126" CNC Folding Machine with 11 GA Maximum Sheet Thickness, 126" Maximum Bending Width, Backgauge, Extra Tooling, Flexibend System 6000 CNC Controls, sn:35/10, mfg.2004

CNC HYDRAULIC PRESS BRAKES

(3) **PULLMAX** Optima 250 3.1/2.55 6-Axis CNC Hydraulic Press Brakes with 12' x 250 Ton Capacity, Work Holding Device, 100.5" Distance Between Housings, Foot Pedal, Tonnage Gauge, CNC Backgauge, Pedestal Control, Work Light, Link Lite, Flush Floor, 9" Throat, CyBelec Modeva 10s CNC Control, sn:4892, sn:4891, sn:4890, all mfg.2000

CONTINUED ON PAGE 4



(3) **PULLMAX** OPTIMA 250 3.1/2 55 6-AXIS CNC HYDRAULIC PRESS BRAKES



(3) PULLMAX OPTIMA 250 3.1/2 55 6-AXIS CNC HYDRAULIC PRESS BRAKES



(3) STANDARD RESISTANCE SPOT WELDERS

CNC HYDRAULIC PRESS BRAKES (continued)

ACCURPRESS Model 717512 175 Ton 2-Axis CNC Hydraulic Press Brake with 12' x 175 Ton Capacity, 14" Open Height, 8" Stroke, 10.4" Throat, **ACCURPRESS** ETS 300 CNC Control, sn:5587, mfg.1995 **To Be Sold by Photo - Machine Located in Greenville, TN

Large Assortment of Press Brake Dies & Racks

SPOT WELDERS

STANDARD RESISTANCE 200 KVA Spot Welder Type PP-2-12, sn:3082, Hoffman Controller, Chiller, T.J. Snow Unitrol Solution Box Model 9180TL-630EL, sn:90215987

(2) **STANDARD RESISTANCE** 100 KVA Spot Welders Type PP-1-1V, sn:3080, Huffman Controller, Chiller, T.J. Snow Unitrol Solution Box Model 9180TA-630EL, sn:S0215990

UP DRAFT TOUCH UP AIR DRY BOOTHS

20' x 25' x 12' Air Dry Booth with 10' x 12' Dual Doors, Center Hinged

20' x 12' x 12' Air Dry Booth with (2) 10' x 12' Doors

MONORAIL SYSTEM CRANE SYSTEM

GORBEL 1/4 Ton Free Standing 50' Monorail Crane System

ATTENDING THE AUCTION IN PERSON? What you need to bring...

- Your Driver's License
- Business Card
- Tax Exempt Form if Non Taxable
- Bank Letter of Guarantee if Paying via Company Check



20' X 25' X 12' AIR DRY BOOTH



20' X 12' X 12' AIR DRY BOOTH



FANUC HEAVY PAYLOAD MATERIAL HANDLING M-900iB/700 ROBOT



FANUC HEAVY PAYLOAD ROBOTIC HANDLER R-2000iB/165F



FANUC HEAVY PAYLOAD ROBOTIC HANDLING M-900iA/600 ROBOT



URETHANE FANUC ROBOTIC CELL WITH NEW EXTRA PUMP



(3) ABB ROBOTIC 6-AXIS WELDERS, TYPE PS90/6-57-P-LSS-4280

Download a lot book at www.asset-sales.com



(2) ABB 2400L 6-AXIS ROBOTIC WELDERS



ROBOTS

FANUC Heavy Payload Robotic Handler Model R-2000iB/165F with Fanuc iR3D Infrared Vision Camera Type A05B-1329-B201 #R11Y01087, Robot on Approx. 50' External 7th Axis Linear Track, sn:F117572, mfg.2011

FANUC Heavy Payload Robotic Handler Model M-900iA/600 with Fanuc iR2D Infrared Vision Type A058-1328-B211 #R11902028, sn:F115068

FANUC Heavy Payload Material Handling Model M-900iB/700 Robot with Fanuc iR2D Infrared Vision Type A05B-1332-B201 #R12200522, Robot on Approx. 15' Linear Track, sn:F130873, mfg.2012

(3) ABB Robotic 6-Axis Welders Type PS90/6-57-P-LSS-4280, sn:0108803230077 • sn: 0108803230087 • sn: 0108803230081

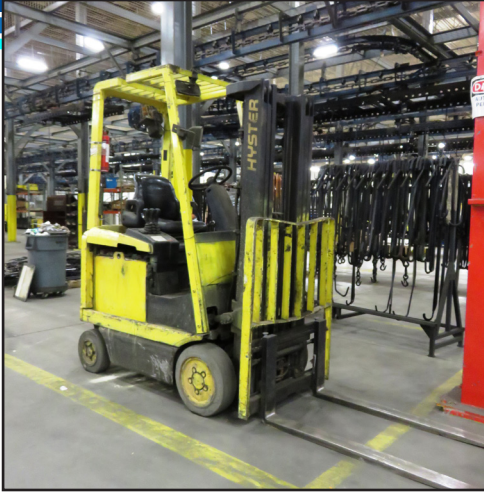
ABB Robotic Welder Type IRB2400L with S4C+ Controller, sn:24-26799, mfg.2003

URETHANE FANUC Robotic Cell with 2D Infrared Vision Camera, 6-Axis, Robot R-2000iB/165F, Fanuc System R-30 Hand Held Control, Allen Bradley Panel View, Plus 1000 Control, sn:R06Y06169, mfg.2006 • **NEW Extra Pump Still in Crate \$20,000 Value**

ABB 6-Axis Robotic Welder Model 2400L with S4C+ Controller, sn:24-27836

ABB 6-Axis Robotic Welder Type PS6041-50-P-DSS395, sn:01100400

ABB 6-Axis Robotic Welder Model 2400L with S4C+, IRBP 500A (500kg) Wolf Robotic Sky Hook, Project # 800056, sn:24-26798



HYSTER 2700LB ELECTRIC FORKLIFT



TOYOTA 4400LB ELECTRIC FORKLIFT



(2) HYSTER STAND-UP ELECTRIC FORKLIFTS

MATERIAL HANDLING

TOYOTA 4,400lb Capacity Electric Forklift Model 7FBCU25 with Side Shift, Triple Mast, Cage, Mirrors, Solid Tires, Work Lights, sn:68889

HYSTER 2,700lb Capacity Electric Forklift Model E30KM2 with Side Shift, Triple Mast, Cage, Solid Tires, Lights, sn:D114N01290Z

HYSTER 2,750lb Capacity Stand Up Electric Forklift Model N30XMR2 with Side Shift, Triple Mast, sn:B470N02283X

HYSTER 3,000lb Capacity Stand-Up Electric Forklift Model N30XMR3 with Side Shift, Triple Mast, sn:C470N02868C

E-COAT PAINT SYSTEM & WASTE WATER TREATMENT SYSTEM

GEORGE KOCH & SONS 23 Stage Monorail E-Coat System with 16-18 Carriers Per Hour, 90" Length x 108" Width x 90" Depth Maximum Part Capacity, 2000lbs Max Weight Per Unit, Stages 1-18 are Pretreatment, Stages 19-23 are E-Coat & E-Coat Rinse Stages, Replacement Cost \$5.0 Million+, Installed 2001

System Components: **JESSUP ENGINEERING** Hoist Overhead Transfer System, Koch Engineering Oven, Pretreat and Paint Tanks, PTI Advanced Filtration Ultrafilters, PTI Advanced Filtration Reverse Osmosis System, Rooney Iron Removal System, Allen Bradley Panel View 600 Controls, Onan Generator, Met-Chem Filter Press 2 Cu. Ft, sn:1517

PLANT WIDE OVERHEAD CONVEYOR SYSTEMS

(4) **WEBSTER INDUSTRIES** Roller Chain Overhead Conveyor Systems Consisting of 1000s of Feet of Conveyor & Rollers

RECLAIM / PAINT / PREP BOOTHS

JB 50'L x 23'W x 18'H Reclaim / Paint / Prep Booth with Down Draft, Lighting, (Booth #1)

20'L x 17'W x 18'H Reclaim / Paint / Prep Booth with Down Draft, Lighting, (Booth #2)

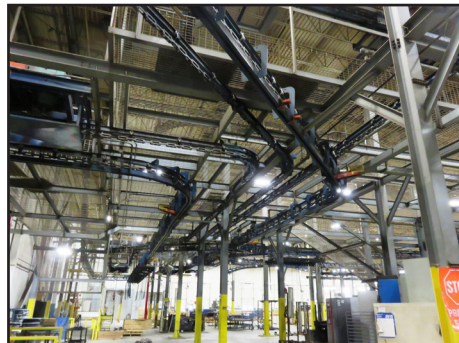
40'L x 18'W x 20'H Top Coat / Paint / Prep Booth with Down Draft, Lighting, (Booth #1)

40'L x 18'W x 20'H Top Coat / Paint / Prep Booth with Down Draft, (Booth #2)

50'L x 26'W x 20'H Paint / Prep Booth with Down Draft, Lighting



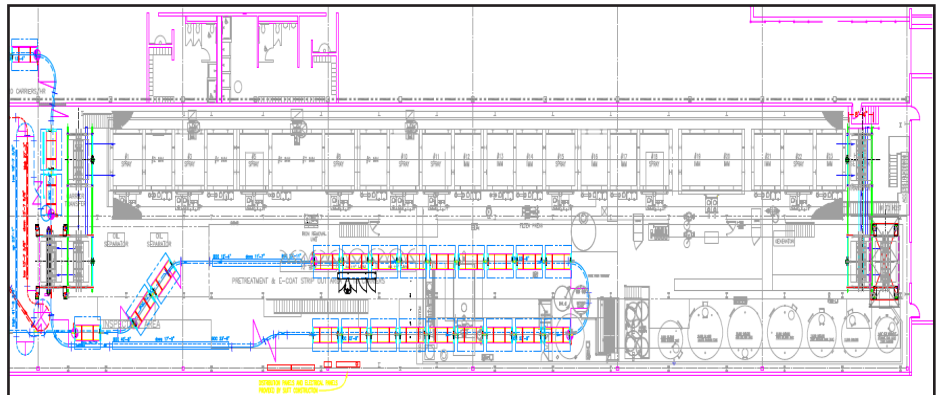
PAINT BOOTHS



OVERHEAD CONVEYOR



WASTE WATER SYSTEM



E-COAT PAINT SYSTEM DIAGRAM



(18) ROBOVENT VORTEX 3 MODEL VTX-8000-4 WELD FUME EXTRACTION SYSTEMS



INTERNATIONAL BOX TRUCK



FORD AEROMAX TRACTOR CAB



FUME EXTRACTION SYSTEMS

(18) ROBOVENT Vortex 3 Model VTX-8000-4 Weld Fume Extraction Systems, sn:23058 • sn:23060 • sn:23065 • sn:23059 • sn:23066 • sn:23073 • sn:23061 • sn:23062 • sn:23056 • sn:23057 • sn:23068 • sn:23071 • sn:23067 • sn:23070 • sn:23063 • sn:23064 • sn:23069 • sn:23072, all mfg.2013 * These Robovents are Either Directional or Non-Directional

WELDING

(118) ESAB 453CV Welding Power Sources • (118) ESAB Digimig Wire Feeders • (3) ESAB Digimig Dual Wire Feeders • (7) ESAB ARISTO 30-4 Wire Feeders • (7) ESAB Aristo Mig 500 Welding Power Sources • (2) ESAB Plasma Torches PCM-1125 • (9) MILLER Deltaweld 452 Welding Power Sources • (3) MILLER Wire Feeders • (2) ARC 650 Stud Welders • (11) FRONIUS Trans Puls Synergic 4000 Welding Power Sources • FRONIUS Trans Puls Synergic 5000 Welding Power Source • (7) FRONIUS VR4000 Wire Feeders • (2) FRONIUS VR1500 Wire Feeders

CRANES

1/4 Ton Jib Crane with Hoist • 1/4 Ton Jib Crane without Hoist • 1/4 Ton Articulating Jib Crane without Hoist

• 1/4 Ton Monorail Jib Crane with Hoist • 1/2 Ton Jib Crane with Hoist • 1/2 Ton Jib Crane without Hoist • 1 Ton Monorail Jib Crane with (4) Hoist • Monorail Jib Crane with (7) Hoist • Note: There is a surplus of Hoists

VEHICLES

INTERNATIONAL 4700-T444E Box Truck with Leather Seats, Dual Back Tires, 8' x 26' Capacity, VIN#1HTSCABM8XH684493

FORD Aeromax L-9000 Tractor Cab with Cloth Seats, Diesel, VIN#IFTYY95R4RVA25412

MISCELLANEOUS

Hand Tools • Electric Chargers • Hoists • Stainless Steel Paint Mixer • Cords • Banding Carts • Air Hoses • Brooms • Tie Downs • Fatigue Mats • Steel Carts • Hand Carts • Transfer Carts • Pallet Racking • File Cabinets • Chairs • Mobile Offices • Metal • Scrap • Pedestal Fans • Steel Tubs • Igloo Coolers • Conveyors • Flammable Storage Cabinets • Office Furniture • Conference Rooms • (3) 40' Storage Trailers • Forklift Chargers • Plus Much More



Asset Sales, Inc.

Corporate Headquarters

301 Post Office Drive, Suite C
Indian Trail, North Carolina 28079

Toll Free: 888.800.4442 Direct: 704.821.4315

Fax: 704.821.4325 – www.asset-sales.com

Asset Sales Inc. • Lance Mannion – SC License #AF.3437 & AUC.3113



Presorted
First Class Mail
U.S. Postage
PAID
Kokomo, IN
Permit No. 154



(6) MAZAK CNC LASERS & FMS CELLS

ABBREVIATED TERMS & CONDITIONS OF AUCTION

YOUR PARTICIPATION AND BIDDING ARE CONSIDERED A LEGALLY BINDING CONTRACT – IT IS PROHIBITED TO BID ON ANY ITEM THAT YOU CANNOT PAY FOR IN FULL BY THE SPECIFIED DATE OR REMOVE BY DESIGNATED DATE.

Subject to amendments and modifications announced by the auctioneer at the time of the auction, any person participating in the auction shall be bound by the following terms and conditions. The auctioneer does not warrant the accuracy, authenticity, description, weight, count or measure of any listings specified herein.

All articles will be sold to the highest bidder conforming to the bid process in accordance to the AUCTIONEER'S TERMS & CONDITIONS – COMPLETE COPIES AVAILABLE AT WWW.ASSET-SALES.COM. No article shall be removed unless paid in full and all articles purchased shall be removed in the time allocated by the auctioneer. No item, no matter how small or how far the purchaser has to travel, may be removed until the close of the auction sale.

All payments shall be by way of cash, certified check, wire transfer and/or a company check accompanied by a bank letter of guarantee payable

to Asset Sales, Inc. All bidding and invoicing will be in US Dollars (\$). All bidders are responsible for all applicable taxes.

Rigging/Removal of sold equipment is the sole responsibility of the buyer and must be completed by the posted date. Rigging/Removal may not begin until payment has been made in full and the auction sale is complete. All heavy rigging will require a certificate of insurance for \$10,000,000.00 naming Asset Sales, Inc. as the insured.

ALL SALES ARE FINAL, ON AN "AS IS – WHERE IS," "IN PLACE," "WITH ALL FAULTS" BASIS. A 15% Buyer's Premium will apply to all onsite purchases and a 18% Buyer's Premium for online purchases.

REGISTRATION & BIDDING ONLINE:

If you plan to bid with Bidspotter.com, you must be pre-approved by Asset Sales, Inc. The pre-approval process is easy, but necessary. Asset Sales, Inc. will verify telephone number and confirm agreement to the Terms and Conditions.

ANYONE OUTSIDE OF THE CONTINENTAL UNITED STATES WILL BE REQUIRED TO WIRE TRANSFER A MINIMUM DEPOSIT OF \$5000 TO BE APPROVED FOR ALL NON-ONSITE BIDDING.

DIRECTIONS FROM CHARLOTTE, NC

From I-77S Charlotte, NC toward Columbia, SC. Take exit 16A to merge onto I-20E toward Florence for 65.3 miles. Use left 2 lanes to take the 141A/1-95N exit toward Fayetteville. Merge onto I-95 N continue for 9 miles. Take exit 170 for S Carolina 327 toward Marion / Myrtle Beach. Turn right onto SC-327S. Turn left onto Florence Harlee Blvd for 1 mile. Turn right onto General William W Drive, plant will be on the left. Follow auction signs.

HOTELS

HOLIDAY INN - (843) 629-9779

2101 Florence Harlee Blvd. - Florence, SC 29506

HAMPTON INN & SUITES - (843) 662-7000

1735 Stokes Rd. - Florence, SC 29501

UPCOMING AUCTIONS

TUESDAY, MAY 3rd / ONGOING LIQUIDATION

Largest Assortment of Large Capacity Late Model CNC Horizontal Boring Mills & Horizontal Machining Centers Ever Offered in One Location
Onsite / Online
Brook Park, OH
Call for More Information

PUBLIC AUCTION

PLANT CLOSED - SURPLUS TO THE NEEDS OF

**STEEL FABRICATION, E-COAT PAINTING,
PRESS BRAKES & LASER FACILITY**

FLORENCE, SC

TUESDAY, MARCH 15TH @ 10:00 A.M. EST