



***Centricut[®] plasma torches
and consumables for
ESAB[®]***





**XP3™ consumables for ESAB® PT-600
and PT-19XLS plasma torches**



Cutting Costs

XP3 consumables maximize productivity and lower operating cost without sacrificing cut quality.

Increased consumable life

- XP3 consumables last, on average, twice as long as the OEM.
- Cut consumables usage in half.
- Reduce system down time associated with consumable changes.

Increased cut speed

- XP3 consumables cut, on average, 25% faster than the OEM – at equivalent power levels.
- Increase productivity of your plasma cutting process.
- Process more parts per hour and more sheets per shift.

Increased consistency

- Provides superior cut quality over the life of the consumables.
- XP3 consumables maintain high cut quality over the life of the consumables.
- Highly engineered designs and precision manufacturing assure consistent consumable quality and life.

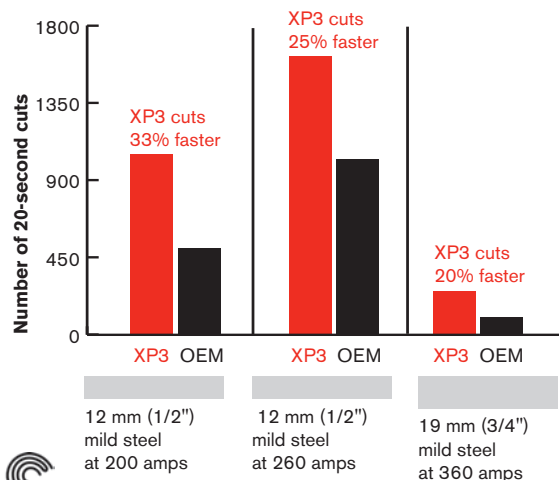
Why choose between cut quality, cut speed and consumable life? With Centricut XP3 consumables, you get them all!



Centricut XP3 vs. OEM

Cut quality over life of consumables

Cut quality measured according to ISO 9013 ranges 3 and 4.



Head to Head

XP3 consumables still going strong long after the OEM consumables have failed

Actual results



Partially-used SilverLine electrode after 1,500 starts



Fully-used OEM electrode after 1,100 starts

Actual results



Partially-used CoolFlow nozzle after 1,500 starts



Fully-used OEM nozzle after 1,100 starts

Hypertherm technology cuts costs and increases performance

Through the use of Hypertherm's SilverLine™, CoolFlow™ and MultiPort™ technologies, XP3 consumables deliver value to your cutting process beyond the capabilities of OEM and aftermarket consumables.

SilverLine electrode technology

- A solid silver front-end allows the SilverLine electrode to achieve a 45% deeper pit depth doubling the electrode life on average.
- Robust welded copper/silver interface delivers consistent performance.

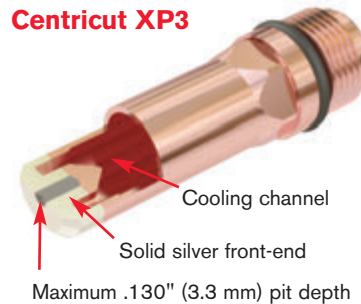
CoolFlow nozzle technology

- Robust construction and exceptional cooling throughout the entire nozzle assembly leads to a doubling of nozzle life on average.
- Self-aligning two-piece nozzle design creates a stable plasma arc yielding the highest quality cutting.
- Brass nozzle base design and cooling maximize tip to base ratio resulting in lower consumable cost.

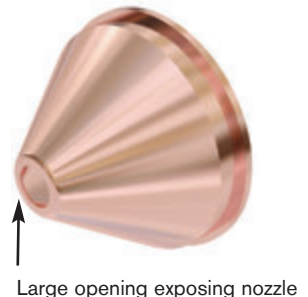
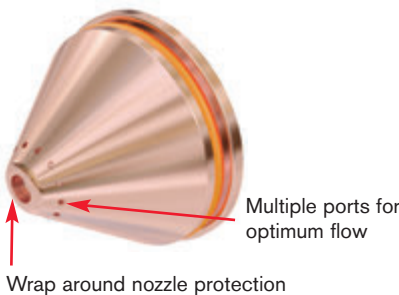
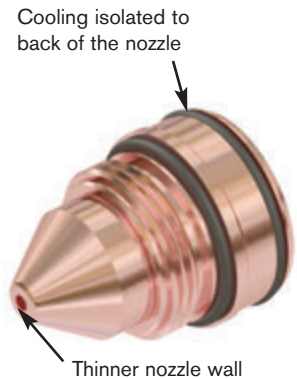
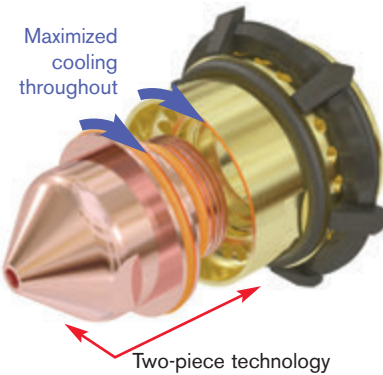
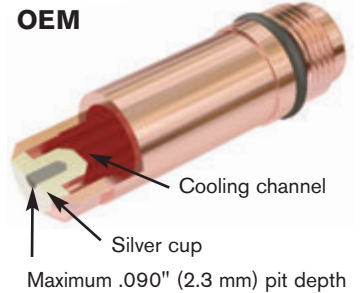
MultiPort shield technology

- Designed to minimize damage caused by spattering of molten metals – maximizing consumable life.
- Optimized shield orifice and heavy duty construction protect the nozzle from spatter and plate crash damage.
- Optimized shield gas flow improves consumable life and enhances cut quality.

Centricut XP3

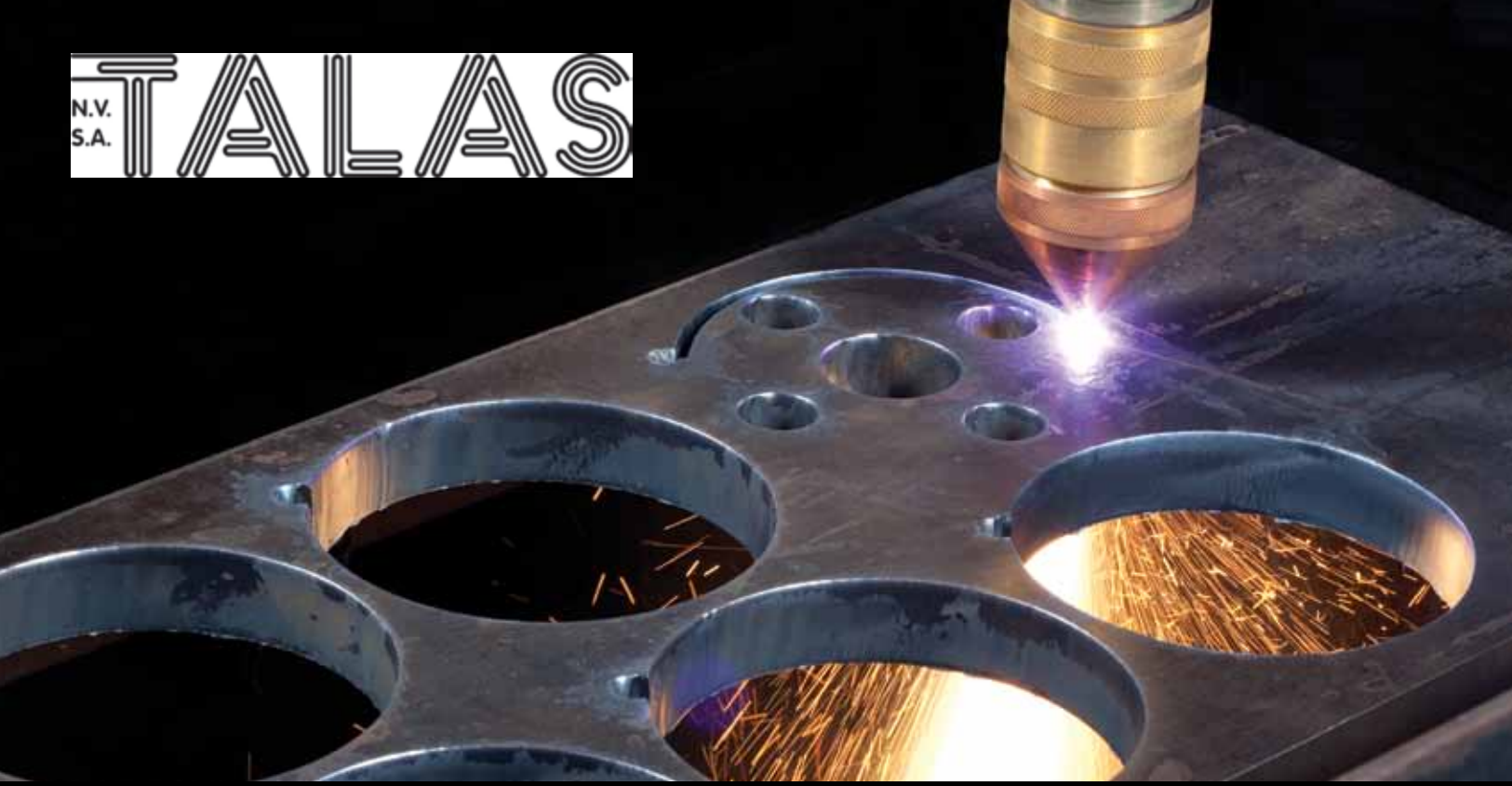


OEM



TALAS

Paardenkerkhofstraat 56 B-2800 Mechelen
 Tel. +32(0)15.61.60.07 Fax. +32(0)15.61.75.27
 Email. info@talas.be www.talas.be



TECHNOLOGY UPDATE

CENTRICUT VS OEM

Upgrade to Centricut performance consumables to lower operating costs without sacrificing cut quality and productivity.

Lower overall cost

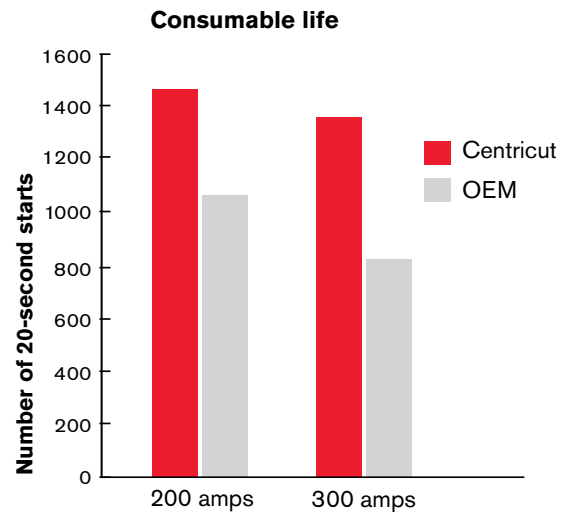
- Centricut consumables last up to twice as long as the OEM.
- Cut consumables usage in half and reduce system downtime.
- Full line of consumables are competitively priced compared to the OEM.

Hypertherm patented technology

- Highly engineered designs deliver excellent performance to your cutting operation.
- SilverLine and CoolFlow consumables set the standard by which other manufacturers measure themselves.
- SilverLine electrodes and CoolFlow nozzles deliver exceptional cut quality and fast cutting speeds over the full life of the consumables.

Quality, consistency, and reliability

- Hypertherm's precision manufacturing assures consistent consumable performance – provides reliability to your cutting process.
- Designed with critical-to-function tolerances that deliver the best quality product every time.
- Easy to use – no special system set-up required.



“The cut quality is better than what we get with the OEM and the parts last a lot longer.”
– Construction Machinery Manufacturer

Centricut consumables for the ESAB torch deliver value to your plasma cutting process.

- **Longer life**
- **Exceptional cut quality**
- **Fast cutting speed**
- **Consistent product quality**
- **Competitive prices**
- **Covers all cutting processes**
- **Plug and play – no special set-up**



FEATURES AND BENEFITS

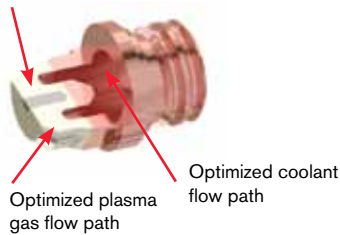
SilverLine electrode technology

- A solid silver front end maximizes cooling and minimizes hafnium wear.
- Flow ridges improve starting performance and extend life.
- Advanced coolant flow design reduces the temperature of the electrode and maximizes life.
- Robust welded copper/silver interface delivers consistent performance.

CENTRICUT TECHNOLOGY VS OEM

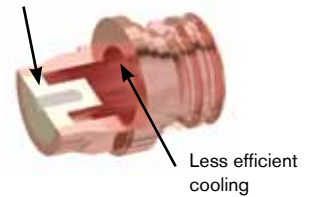
SilverLine electrode

Solid silver front-end



OEM electrode

Silver insert

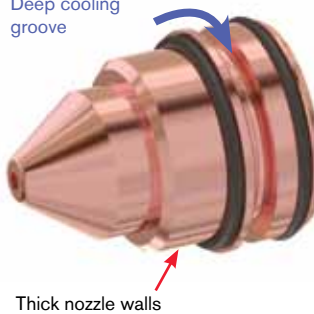


CoolFlow nozzle technology

- Computer-designed contours optimize the coolant flow in the nozzle and substantially lower the operating temperature.
- Thicker nozzle walls dissipate heat away from the orifice more efficiently, leading to cooler operation.
- Cooler nozzle operation directly translates into longer life of all consumables.

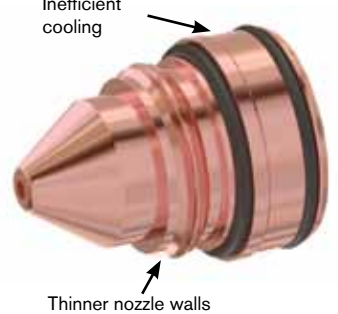
CoolFlow nozzle

Deep cooling groove



OEM nozzle

Inefficient cooling

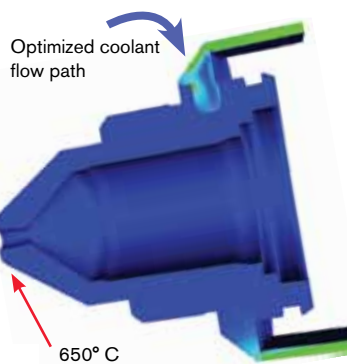


Cooling comparison

Analysis of electrode and nozzle cooling through the use of Computational Fluid Dynamics allows Hypertherm engineers and material scientists to optimize Centricut consumables to the highest levels of performance.

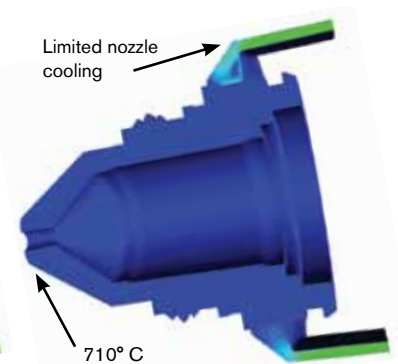
CoolFlow nozzle

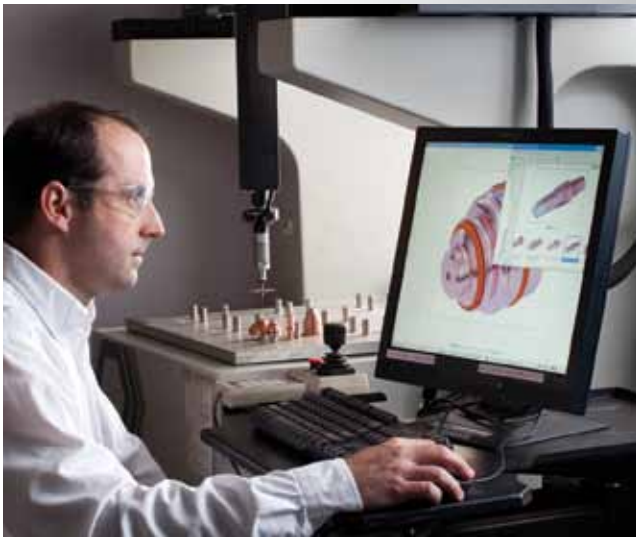
Optimized coolant flow path



OEM nozzle

Limited nozzle cooling





Cut with confidence™

Centricut products are backed by Hypertherm – the global leader in plasma cutting technology

- Hypertherm patented consumable technologies deliver measurable performance improvements
- Hypertherm lean manufacturing and Six Sigma methods provide quality, consistency and reliability
- Hypertherm and its network of distributors are committed to providing the best service and support available



The Centricut replacement torch for PT-36 combines Hypertherm innovation and reliability

A robust torch body that features a unique threaded and glued sleeve-to-shell design

- **Improved long-term alignment of torch components**
- **Reduced risk of leaking**
- **Extended overall torch service life**
- **Fully compatible with Centricut and OEM consumables**

To achieve maximum consumable life

Use electrode to full life: A fully used SilverLine electrode will have a pit depth of .120" (3.0 mm). This is deeper than the recommended pit depth for standard parts of .090" (2.3 mm).

Properly tighten the nozzle retaining cup: Make sure the retaining cup is sealed tightly against the nozzle to prevent leaking.

Purge torch: After each parts change, purge the torch for at least 30 seconds to remove residual moisture.

Leak check: After purging the torch, make sure all o-ring seals are tight and there are no torch coolant leaks.

Adjust plasma gas pressure: Plasma gas flow rate is critical. High flow will cause rapid electrode wear and hard starting. Low flow will cause uncontrolled arcing.

Adjust shield gas pressure: Refer to the cut chart for optimum shield gas pressure. Having the correct start shield flow provides protection to the nozzle and shield during the piercing process.

Pierce at correct height: Refer to the cut chart for optimum pierce (initial) height. Piercing too low causes molten metal (spatter) to hit the shield and nozzle – the most common cause of premature nozzle failure. Piercing too high can cause misfires and nozzle damage.

Adjust arc voltage: As the consumables wear, the torch will get closer to the plate. To maintain optimum cutting height, increase arc voltage in 5-volt increments, up to 20 volts higher than the initial setting.

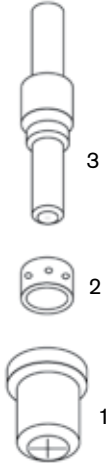
Avoid arc stretching: This can occur during rip cutting off the plate or when the lead out is improperly programmed. This shortens consumable life.

Clean the nozzle and shield: Periodically clean the nozzle and shield to remove spatter. This will prevent double arcing which shortens consumable life.

N.V.
S.A.
TALAS

OEM ESAB®

System PCM®-VPi, PCM-SMi, PCM-500i, PCM-625i, PCM-50A, PCM-875 and PCM-1125



Consumables

Centricut part number	Reference number	Description	Pkg qty
1 C31-682	19682	Tip, XL, 30 amp	10
C31-866	18866	Tip, 30 amp	5
C31-079	20079	Tip, XL, 50 amp	5
L31-820	18820	Tip, 50 amp	5
C31-008	21008	Tip, extended, 40 amp	10
C31-861	20861	Tip, extended, 50 amp	10
2 C31-463	20463	Swirl baffle, XL, 6 holes	1
C31-785	18785	Swirl baffle, 4 holes	1
3 C31-683	19683	Electrode, XL	5
C31-205	18205	Electrode	2
C31-862	20862	Electrode, extended	10
L31-679	19679	Seat	1
L31-282	20282	Heat shield, XL	1

Maintenance items

Centricut part number	Reference number	Description	Pkg qty
L31-072	20072	PT-31XL torch body, 75°	1
L31-790	950790	O-ring	5
027055	N/A	Lubricant .25 oz. (7 ml) tube	1

Centricut is a registered trademark of Hypertherm, Inc. and may be registered in the United States and/or other countries. All other trademarks are the properties of their respective owners. Centricut is in no way affiliated with ESAB.

OEM ESAB®

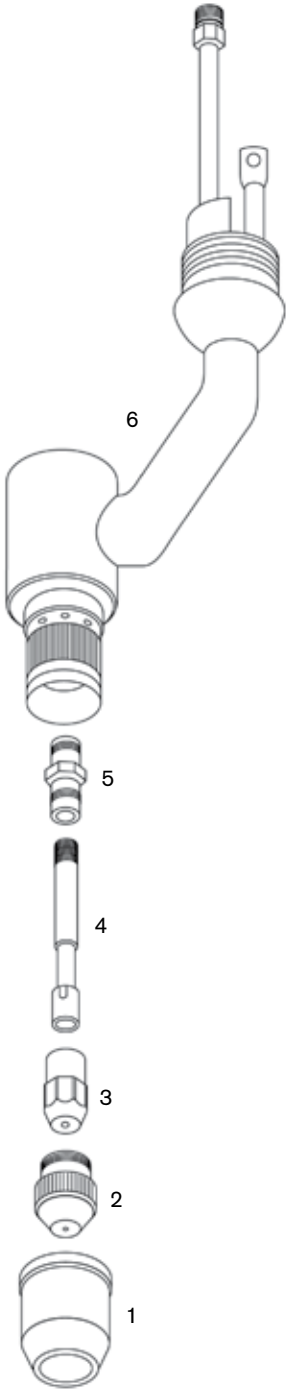
System PCM®-70, PCM-100 and PCM-150

Consumables

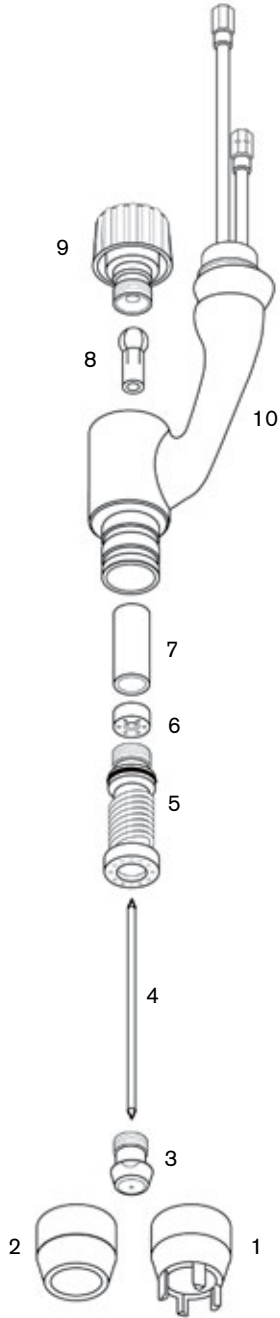
Centricut part number	Reference number	Description	Pkg qty
L11-498	19498	Shroud cap	1
L11-502	19502	Shroud	1
L11-989	19989	Shield guard, drag	1
L11-990	19990	Shield guard	1
1 C11-124	19124	Heat shield	1
L11-747	20747	Heat shield, H.D.	1
2 C11-914	19914	Tip, .037, 30 amp	5
C11-915	19915	Tip, .046, 40 amp	5
C11-916	19916	Tip, .052, 60 amp	5
C11-917	19917	Tip, .057, 80 amp	5
C11-056	20056	Tip, .067, 100 amp	5
L11-426	20426	Tip, gouging, 70 amp	5
L11-427	20427	Tip, gouging, 100 amp	5
3 C11-918	19918	Electrode	5
4 C11-114	19114	Baffle tube	1
5 C11-053	20053	Electrode stem	1

Maintenance items

Centricut part number	Reference number	Description	Pkg qty
6 L11-010	20010	PT-17/17A machine torch body, 180°	1
L11-008	20008	PT-17/17A torch body, 75°	1
027055	N/A	Lubricant .25 oz. (7 ml) tube	1



Centricut is a registered trademark of Hypertherm, Inc. and may be registered in the United States and/or other countries. All other trademarks are the properties of their respective owners. Centricut is in no way affiliated with ESAB.



Consumables

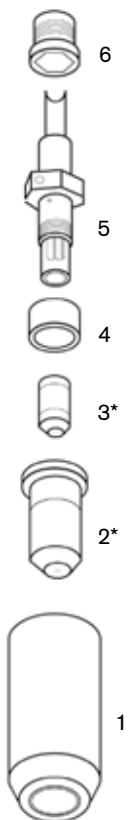
Centricut part number	Reference number	Description	Pkg qty
1	L12-620	Heat shield, drag, 50 amp	1
	L12-419	Heat shield, drag, 120 amp	1
2	C12-261	Heat shield, machine	5
3	L12-184	Tip, .032	5
	C12-119	Tip, .047	10
	C12-263	Tip, .055	10
	C12-264	Tip, .063	10
4	C12-328	Electrode	5
5	C12-260	Front body insert with o-ring	1
	L12-690	High current body insert with o-ring	1
6	L12-540	Baffle	1
	L12-691	High current baffle	1
7	L12-586	Spacer	5
	C12-262	Gasket	5

Maintenance items

Centricut part number	Reference number	Description	Pkg qty
8	L12-259	Collet, brass	1
9	L12-257	Torch cap	1
	L12-266	Center-adjust tool	1
	C12-092	O-ring	5
10	L12-270	PT-121 machine torch	1
	027055	Lubricant .25 oz. (7 ml) tube	1

OEM ESAB®

System PCM®-100, PCM-875, PCM-1125 and ESP-100i



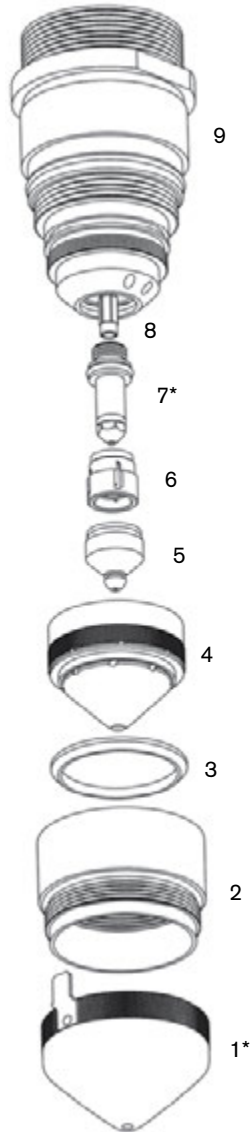
Consumables

Centricut part number	Reference number	Description	Pkg qty
1	L39-447	21447 Heat shield, 50 amp	1
	L39-326	21326 Heat shield, 70 – 100 amp	1
2	C39-330*	21330 Nozzle, 50 amp	5
	C39-329*	21329 Nozzle, 70 amp	5
	C39-328*	21328 Nozzle, 100 amp	5
3	C39-150*	21150 Electrode	5
4	L39-373	21373 Insulator	1
	L39-374	21374 Baffle tube	1
5	L39-332	21332 Electrode holder assembly (includes L39-374)	1
6	C39-372	21372 Electrode seat	1

Maintenance items

Centricut part number	Reference number	Description	Pkg qty
	L39-359	21359 PT-20AM torch body assembly (includes L39-372 and L39-157)	1
	L39-157	488157 O-ring	1
	027055	N/A Lubricant .25 oz. (7 ml) tube	1

* Centricut part features a unique Hypertherm design that differs from the OEM design.



Consumables

Centricut part number	Reference number	Description	Pkg qty
1 C70-531*	22531	Shield, one piece with IHS tab	1
2 C70-712	21712	Shield retainer insulator with o-ring	1
	C70-931	Shield without tab	1
3 C70-010	22010	Shield cup insulator	1
4 C70-007	22007	Nozzle retainer diffuser	1
	L70-540	Nozzle A, 15 amp	1
	L70-541	Nozzle B, 30 amp	1
5 C70-542	21542	Nozzle C, 50 amp	5
	C70-543	Nozzle D, 70 amp	5
	C70-923	Nozzle E, 100 amp	5
	L70-852	Swirl baffle, 15 amp	1
	L70-536	Swirl baffle, 30 amp	1
6 C70-692	21692	Swirl baffle, 50 –100 amp	1
7 C70-1039*	21539	SilverLine® electrode	1

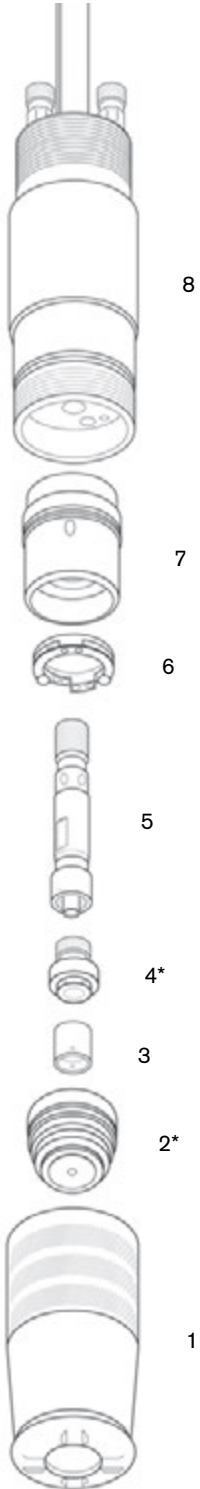
Maintenance items

Centricut part number	Reference number	Description	Pkg qty
L70-714	950714	O-ring	1
L70-797	638797	O-ring	5
L70-W18	98W18	O-ring	5
L70-W62	86W62	O-ring	1
8 L70-725	21725	Water baffle	1
9 L70-758	21758	Torch body	1
	027055	Lubricant .25 oz. (7 ml) tube	1
	L70-765	Tool, electrode and nozzle	1

* Centricut part features a unique Hypertherm design that differs from the OEM design.

OEM ESAB®

System PCM®-8, ESP®-300, ESP-400, ESP-600 and ESP-1000



Consumables

Centricut part number	Reference number	Description	Pkg qty
C10-758	20758	Nozzle retaining cap, bevel, PT-15XL	1
1 C10-759	20759	Nozzle retaining cap, PT-15XL	1
C10-230	996230	Nozzle retaining cap, PT-15	1
2 C10-691*	2075691	Nozzle assembly, N ₂ , .125, 250 amp	1
C10-611	2075611	Nozzle assembly, N ₂ , .156, 400 amp	1
C10-614	2075614	Nozzle assembly, N ₂ , .156, reverse swirl	1
C10-612	2075612	Nozzle assembly, N ₂ , .200, 600 amp	1
C10-615	2075615	Nozzle assembly, N ₂ , .200, reverse swirl	1
C10-613	2075613	Nozzle assembly, N ₂ , .230, 750 amp	1
C10-690	2075690	Nozzle assembly, N ₂ , .230, reverse swirl	1
L10-587	2075587	Nozzle assembly, N ₂ , .250, 875 – 1000 amp	1
C10-317	37317	Nozzle, 125 amp, PT-15XL (use with C10-142 and C10-1066)	1
C10-318	N/A	Nozzle base, 125 amp, PT-15XL	1
C10-319	N/A	Nozzle insulator, 125 amp, PT-15XL	1
C10-586	2075586	Gas swirl baffle, ceramic, 8 x .067, 260 amp	1
C10-142	948142	Gas swirl baffle, ceramic, 4 hole, 100 – 280 amp	1
3 C10-341	2075341	Gas swirl baffle, poly, 4 hole	1
C10-360	2075360	Gas swirl baffle, poly, reverse swirl, 4 hole	1
L10-918	20918	Gas swirl baffle, 8 x .067, reverse, 260 amp	1
4 C10-236*	600236	Electrode tip, N ₂	5
5 C10-343	2075343	Electrode tip holder, N ₂	1
6 C10-940	21940	Contact ring assembly	1

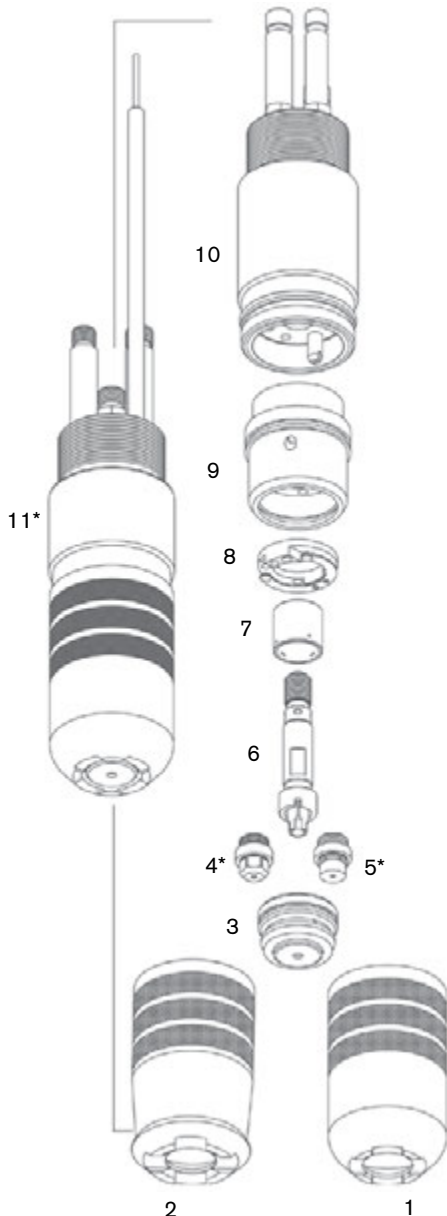
Maintenance items

Centricut part number	Reference number	Description	Pkg qty
C10-403	20403	PA bus insulator	1
C10-755	20755	Insulator body with o-ring, PT-15XL	1
7 C10-232	996232	Insulator body with o-ring, PT-15	1
8 C10-754	20754	Torch body, PT-15XL	1
C10-240	996240	Torch body, PT-15	1
C10-483	19483	Double threaded mounting tube	1
C10-932	N/A	O-ring kit, insulator body	1
L10-588	2075588	Insulator, high current nozzle	1
L10-859	21859	Sleeve assembly, air curtain	1
L10-408	20408	High frequency connector	1
L47-110	37110	Electrode holder – removal tool	1
027055	N/A	Lubricant .25 oz. (7 ml) tube	1

* Centricut part features a unique Hypertherm design that differs from the OEM design.

OEM ESAB®

System PCM®-8, ESP®-300, ESP-400, ESP-600 and ESP-1000



Consumables

Centricut part number	Reference number	Description	Pkg qty
1 C10-758	20758	Nozzle retaining cap, bevel, PT-15XL	1
2 C10-759	20759	Nozzle retaining cap, PT-15XL	1
C10-262	21962	Nozzle, 300 amp, bevel	1
C10-063	21963	Nozzle, 300 amp, reverse bevel	1
C10-317	37317	Nozzle, 125 amp, PT-15XL (use with C10-142 and C10-1066)	1
C10-318	N/A	Nozzle base, 125 amp, PT-15XL	1
C10-661	N/A	Nozzle base, O ₂ , 300 amp	1
C10-319	N/A	Nozzle insulator, 125 amp, PT-15XL	1
3 C10-751	20751	Nozzle, O ₂ , 260 amp	1
C10-962	35662	Nozzle, O ₂ , 300 amp	1
C10-662	35662	Nozzle, O ₂ , 300 amp (replaceable ceramic)	1
C10-664	35664	Nozzle, O ₂ , 340 – 360 amp	1
C10-665	35665	Nozzle, O ₂ , 340 – 360 amp, reverse	1
C10-920	20920	Nozzle, O ₂ , .099, 260 amp, reverse	1
4 C10-1063*	20763	SilverLine® electrode, 260 amp	1
C47-1096*	34086	SilverLine electrode, 50 – 250 amp, bevel	1
5 C10-1066*	35666	SilverLine electrode, 300 – 360 amp	1
C10-763*	20763	Electrode, O ₂	1
6 C10-398	20398	Electrode holder, O ₂	1
C47-084	34084	Electrode holder	1
7 C10-586	2075586	Gas swirl baffle, ceramic, 8 x .067, 260 amp	1
L10-918	20918	Gas swirl baffle, 8 x .067, reverse, 260 amp	1
C10-142	948142	Gas swirl baffle, ceramic, 4 hole, 100 – 280 amp	1
L47-143	948143	Gas swirl baffle, 4 x .032, reverse, 70 – 200 amp	1
C10-660	35660	Gas swirl baffle, 8 hole, standard, 300 – 600 amp	1
L47-661	35661	Gas swirl baffle, 8 x .047, reverse, 250 – 400 amp	1
8 C10-940	21940	Contact ring assembly	1

Maintenance items

Centricut part number	Reference number	Description	Pkg qty
C10-403	20403	PA bus insulator	1
9 C10-755	20755	Insulator body with o-ring kit	1
C10-242	996242	Locating pin	1
10 C10-754	20754	Torch body	1
11 C10-954*	16365	Torch assembly, SilverLine, O ₂ , 260 amp (includes items 1 – 10)	1
C10-955*	16365	Torch assembly, SilverLine, O ₂ , 300 amp (includes items 1 – 10)	1
C10-483	19483	Double threaded mounting tube	1
C10-932	N/A	O-ring kit, insulator body	1
L10-630	999630	Electrode holder removal tool	1
C10-W99	86W99	O-ring, electrode holder	5
C10-W85	86W85	O-ring, insulator body center	5
C10-526	996526	O-ring, insulator body small	5
C10-527	996527	O-ring, inside insulator body, front	5
C10-528	996528	O-ring, outside insulator body and torch	5
C10-106	2064106	O-ring, insulator body rear edge, red	5
L10-082	21082	Pilot arc bus wire	1
L10-408	20408	High frequency connector	1
L47-551	21551	Air curtain sleeve	1
L47-110	37110	Electrode stem tool	1
L10-568	996568	Electrode removal tool	1
L10-4775	34775	Power cable, 4.5 ft.	1
027055	N/A	Lubricant .25 oz. (7 ml) tube	1

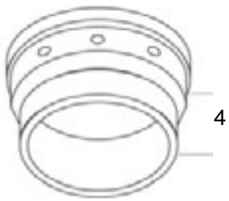
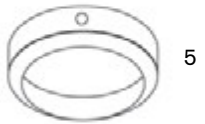
* Centricut part features a unique Hypertherm design that differs from the OEM design.

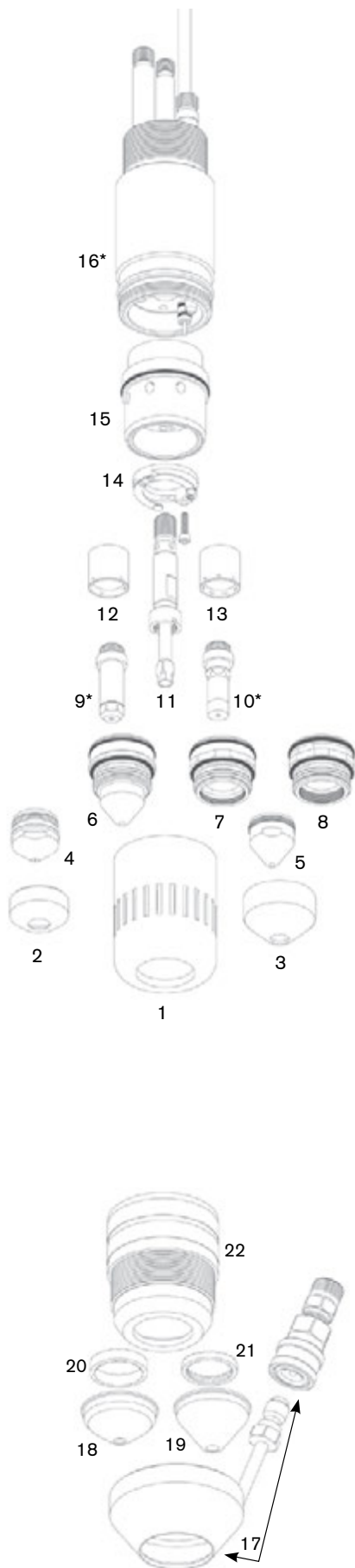
OEM ESAB®

System PCM®-8, ESP®-300, ESP-400, ESP-600 and ESP-1000

Consumables

Centricut part number	Reference number	Description	Pkg qty
1 C10-628	996628	Gasket	5
2 C10-693	2075693	Insulator, .140	5
C10-617	2075617	Insulator, .180	5
C10-606	2075606	Insulator, .225	5
C10-607	2075607	Insulator, .260	5
3 C10-619	996619	Spacer	5
4 C10-618	996618	Centering sleeve	5
5 C10-584	2075584	Water swirl ring, standard	5
C10-616	2075616	Water swirl ring, reverse	5
6 C10-694	2075694	Nozzle base, .125	5
C10-608	2075608	Nozzle base, .156	5
C10-609	2075609	Nozzle base, .200	5
C10-610	2075610	Nozzle base, .230	5





Consumables

Centricut part number	Reference number	Description	Pkg qty
1 L47-085	34085	Nozzle retaining cap	1
C47-082	37082	Nozzle retaining cap	1
2 L47-885	34885	Heat shield, 50 amp	1
3 C47-186	948186	Heat shield, Std, 100 – 360 amp	1
L47-506	19506	Heat shield, heavy duty, 100 – 360 amp	1
4 C47-026	22026	Nozzle tip, .041, 50 amp	1
5 C47-029	22029	Nozzle tip, .071, 100 amp	1
C47-030	22030	Nozzle tip, .082, 150 amp	1
C47-031	22031	Nozzle tip, .091, 200 amp	1
C47-922	22032	Nozzle tip, 250 amp	1
C47-985	22034	Nozzle tip, 360 amp	1
C47-995	22033	Nozzle tip, 400 amp	1
C47-822	21822	Nozzle, .099, 250 amp	1
6 C47-885	35885	Nozzle, .120, 360 amp	1
C47-195	22195	Nozzle, .130, 400 amp	1
C47-027	22027	Nozzle base, 50 amp	1
7 C47-028	22028	Nozzle base, 100 – 400 amp	1
8 C47-928	N/A	Nozzle base, extended life, 100 – 400 amp	1
9 C47-1096*	34086	SilverLine® electrode, 250 amp	1
10 C47-1086*	35886	SilverLine electrode, 360 amp	1
C47-996	34086	Electrode, CopperLine®, 250 amp	1
11 C47-084	34084	Electrode holder	1
12 C47-142	948142	Gas swirl baffle, 4 hole, standard, 100 – 280 amp	1
L47-143	948143	Gas swirl baffle, 4 hole, reverse, 70 – 200 amp	1
C47-586	2075586	Gas swirl baffle, 8 hole, standard, 260 amp	1
13 C10-660	35660	Gas swirl baffle, 8 hole, standard, 300 – 600 amp	1
L10-918	20918	Gas swirl baffle, 8 hole, reverse, 260 amp	1
14 C47-940	21940	Contact ring assembly	1

Maintenance items

Centricut part number	Reference number	Description	Pkg qty
C10-403	20403	PA bus insulator	1
15 C47-434	20434	Insulator assembly	1
16 C47-391*	20391	PT-19XL torch body	1
C47-990*	N/A	Torch assembly, SilverLine, 150 amp	1
C47-991*	N/A	Torch assembly, SilverLine, 250 amp	1
C47-992*	N/A	Torch assembly, SilverLine, 360 amp	1
L47-110	37110	Electrode holder – removal tool	1
C14-793	85W10	O-ring, rear insulator	3
C10-W99	86W99	O-ring, electrode holder	5
C47-528	996528	O-ring, outside insulator body and torch	5
C47-999	N/A	O-ring kit, insulator body	1
C10-106	2064106	O-ring, insulator body rear edge, red	5
C47-W85	86W85	O-ring, insulator body center	5
C47-526	996526	O-ring, insulator body small	5
C47-527	996527	O-ring, inside insulator body	5
C10-483	19483	Double threaded mounting tube	1
L47-551	21551	Air curtain sleeve	1
L10-408	20408	High frequency connector	1
L10-4775	34775	Power cable, 4.5 ft.	1
L10-568	996568	Electrode removal tool	1
C47-006	181W89	O-ring, nozzle	5
027055	N/A	Lubricant .25 oz. (7 ml) tube	1

PT-19XL+S

Consumables

Centricut part number	Reference number	Description	Pkg qty
17 L47-801	21801	Shield retainer assembly	1
18 L47-795	21795	Shield, 50 amp	5
19 C47-802	21802	Shield, 100 – 250 amp	1
C47-945	21945	Shield, 300 – 400 amp	1
20 L47-796	21796	Diffuser, 50 amp	1
21 C47-944	21944	Diffuser, 100 – 600 amp	1
22 L47-982	21982	Nozzle retaining cup	1

* Centricut part features a unique Hypertherm design that differs from the OEM design.

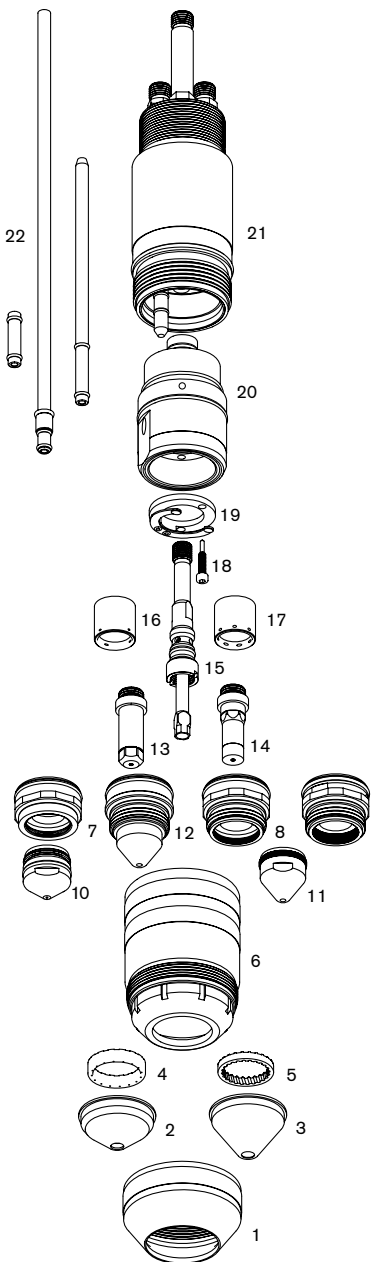
Consumables

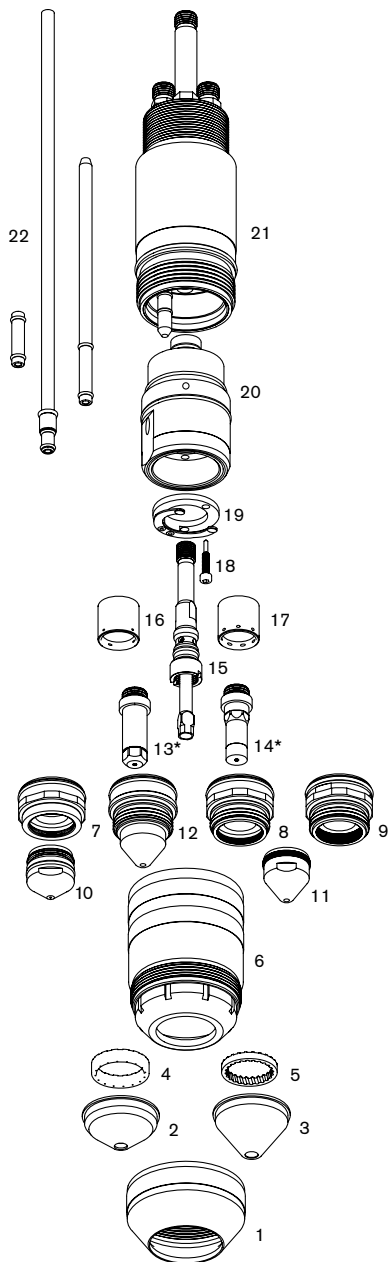
Centricut part number	Reference number	Description	Pkg qty	
1	C47-081	37081	Shield retainer	1
2	L47-795	21795	Shield, 50 amp	5
3	C47-802	21802	Shield, 100 – 250 amp	1
	C47-945	21945	Shield, 325 – 600 amp	1
4	L47-796	21796	Diffuser, 50 amp	1
5	C47-944	21944	Diffuser, 100 – 600 amp	1
	C47-496	22496	Diffuser, 100 – 600 amp, reverse, black	1
6	C47-082	37082	Nozzle retaining cap	1
	L47-431	37431	Nozzle retaining cap, air curtain	1
7	C47-027	22027	Nozzle base, 50 amp	1
8	C47-028	22028	Nozzle base, 100-360 amp	1
9	C47-928	N/A	Nozzle base, extended life, 100-400 amp	1
10	C47-026	22026	Nozzle tip, .041, 50 amp	1
11	C47-029	22029	Nozzle tip, .071, 100 amp	1
	C47-030	22030	Nozzle tip, .082, 150 amp	1
	C47-031	22031	Nozzle tip, .091, 200 amp	1
	C47-922	22032	Nozzle tip, 250 amp	1
	C47-985	22034	Nozzle tip, 360 amp	1
	C47-995	22033	Nozzle tip, 400 amp	1
12	C47-822	21822	Nozzle, .099, 250 amp	1
	C47-885	35885	Nozzle, .120, 360 amp	1
	C47-195	22195	Nozzle, .130, 400 amp	1
	L47-401	22401	Nozzle, 600 amp	1
13	C47-1096	34086	SilverLine® electrode, 50 – 250 amp	1
14	C47-1086	35886	SilverLine electrode, 360 amp	1
	C47-996	34086	Electrode, CopperLine®, 250 amp	1
	L47-196	22196	Electrode, 400 amp	1
	L47-403	22403	Electrode, N ₂ /ArH ₂ , 600 amp	5
16	C47-142	948142	Gas swirl baffle, 4 hole, standard, 100 – 280 amp	1
	L47-143	948143	Gas swirl baffle, 4 hole, reverse, 70 – 200 amp	1
	C47-586	2075586	Gas swirl baffle, 8 hole, standard, 260 amp	1
17	C10-660	35660	Gas swirl baffle, 8 hole, standard, 300 – 600 amp	1
	L47-194	22194	Gas swirl baffle, standard, 400 amp	1
	C122-530R	0558002530R	Gas swirl baffle, 8 x .047, reverse, 360 – 450 amp	1
18	C47-073	37073	Screw, contact ring	1
19	C47-071	37071	Contact ring assembly	1

Maintenance items

Centricut part number	Reference number	Description	Pkg qty	
	C47-528	996528	O-ring, outside insulator body and torch	5
	C10-106	2064106	O-ring, insulator body rear edge, red	5
20	C47-083	37083	Insulator body	1
22	C47-900	N/A	Insulating tube kit, PT-19XLS/PT-600	1
15	C47-068	37068	Electrode holder	1
21	C47-066	37066	Torch body	1
	C47-993	N/A	Torch assembly, SilverLine, 250 amp	1
	C47-994	N/A	Torch assembly, SilverLine, 360 amp	1
	C10-483	19483	Double threaded mounting tube	1
	C10-033	951000	O-ring, Teflon® tubes	5
	C10-W85	86W85	O-ring, insulator body center	1
	C10-106	2064106	O-ring, insulator body rear edge, red	5
	C47-998	N/A	O-ring kit, insulator body	1
	C47-528	996528	O-ring, insulator assembly	1
	C47-006	181W89	O-ring, nozzle	1
	L47-110	37110	Electrode holder removal tool	1
	L10-408	20408	High frequency connector	1
	C47-900	N/A	Insulating tube kit, PT-19XLS/PT-600	1
	L47-063	37063	Locating pin	1
	L47-075	37075	P.A. collet and wire assembly	1
	027055	N/A	Lubricant .25 oz. (7 ml) tube	1

Centricut, SilverLine and CopperLine are registered trademarks of Hypertherm, Inc. and may be registered in the United States and/or other countries. All other trademarks are the properties of their respective owners. Centricut is in no way affiliated with ESAB.





Consumables

Centricut part number	Reference number	Description	Pkg qty
1 C47-081	37081	Shield retainer	1
2 L47-795	21795	Shield, 50 amp	5
3 C47-802	21802	Shield, 100 – 250 amp	1
C47-945	21945	Shield, 325 – 600 amp	1
L96-4678	0558004678	Shield	5
4 L47-796	21796	Diffuser, 50 amp	1
5 C47-944	21944	Diffuser, 100 – 600 amp	1
C47-496	22496	Diffuser, 100 – 600 amp, reverse, black	1
6 C47-082	37082	Nozzle retaining cap	1
L47-431	37431	Nozzle retaining cap, air curtain	1
7 C47-027	22027	Nozzle base, 50 amp	1
8 C47-028	22028	Nozzle base, 100 – 360 amp	1
9 C47-928	N/A	Nozzle base, extended life, 100 – 400 amp	1
10 C47-026	22026	Nozzle tip, .041, 50 amp	1
11 C47-029	22029	Nozzle tip, .071, 100 amp	1
C47-030	22030	Nozzle tip, .082, 150 amp	1
C47-031	22031	Nozzle tip, .091, 200 amp	1
C47-922	22032	Nozzle tip, 250 amp	1
C47-985	22034	Nozzle tip, 360 amp	1
C47-995	22033	Nozzle tip, 400 amp	1
12 C47-822	0558001623	Nozzle, .099, 250 amp	1
C47-885	0558001885	Nozzle, .120, 360 amp	1
C47-195	0558001886	Nozzle, .130, 400 amp	1
L47-401	0558001887	Nozzle, 600 amp	1
13 C96-1024*	0558001624	SilverLine® electrode, 250 amp	1
14 C96-1016*	0558002516	SilverLine electrode, 360/400 amp	1
L96-2499	0558002499	Electrode, N ₂	1
15 C96-621	0558001621	Electrode holder	1
16 C47-142	0558002533	Gas swirl baffle, 4 hole, standard, 100 – 280 amp	1
L47-143	0558002534	Gas swirl baffle, 4 hole, reverse, 70 – 200 amp	1
L47-661	35661	Gas swirl baffle, 8 hole, reverse, 250 – 400 amp	1
17 C10-660	0558001625	Gas swirl baffle, 8 hole, standard, 300 - 600 amp	1
L47-194	22194	Gas swirl baffle, standard, 400 amp	1
C122-530R	0558002530R	Gas swirl baffle, 8 x .047, reverse, 360 – 450 amp	1

Maintenance items

Centricut part number	Reference number	Description	Pkg qty
18 C47-073	37073	Screw, contact ring assembly	1
19 C47-071	37071	Contact ring assembly	1
C47-528	996528	O-ring, outside insulator body and torch	5
C47-998	N/A	O-ring, kit, insulator body	1
C10-483	19483	Double threaded mounting tube	1
20 C47-083	37083	Insulator body	1
22 C47-900	N/A	Insulating tube kit, PT-19XLS/PT-600	1
C96-925	0558001825	Torch body, modular	1
21 C47-066	37066	Torch body	1
C96-993*	N/A	Torch assembly, SilverLine, 250 amp	1
C96-994*	N/A	Torch assembly, SilverLine, 360 amp	1
L96-4611	0558004611	Electrode, holder, tool	1
L10-4775	34775	Power cable, 4.5 ft.	1
027055	N/A	Lubricant .25 oz. (7 ml) tube	1

* Centricut part features a unique Hypertherm design that differs from the OEM design.

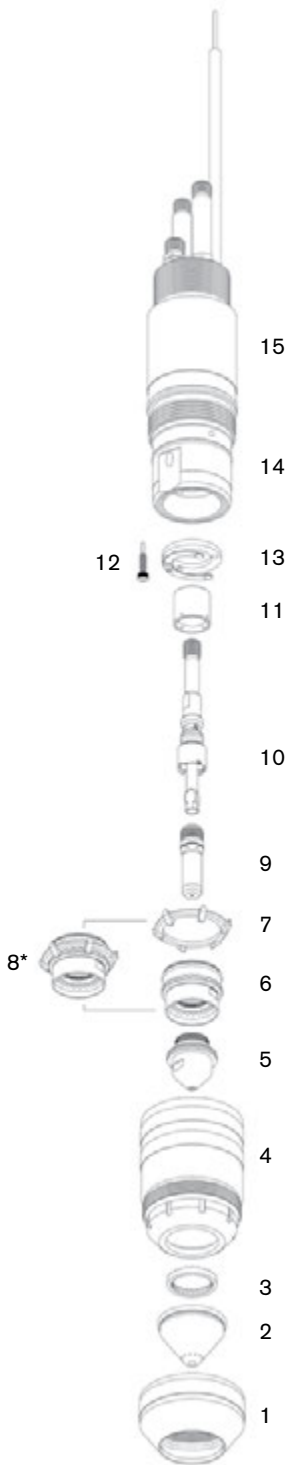
Consumables

Centricut part number	Reference number	Description	Pkg qty
1 C47-081	37081	Shield retainer	1
2 C120-920*	N/A	MultiPort shield, 200	1
C120-900	N/A	MultiPort shield, 260 amp	1
C120-936	N/A	MultiPort shield, 360 amp	1
3 C47-944	21944	Diffuser, 100 – 600 amp	1
4 C47-082	37082	Nozzle retaining cap	1
5 C120-200	N/A	CoolFlow™ nozzle tip, 200 amp	1
C120-260	N/A	CoolFlow nozzle tip, 260 amp	1
C120-360	N/A	CoolFlow nozzle tip, 360 amp	1
15 C120-2200*	N/A	CoolFlow nozzle kit, 200 amp, 20 pack	1
C120-2260*	N/A	CoolFlow nozzle kit, 260 amp, 20 pack	1
C120-2360*	N/A	CoolFlow nozzle kit, 360 amp, 20 pack	1
6 C120-010*	N/A	CoolFlow nozzle base	1
14 7 C120-020*	N/A	Baffle, coolant	1
8 C120-030*	N/A	CoolFlow nozzle base assembly	1
9 C120-1010*	N/A	SilverLine® electrode	1
10 C96-621	0558001621	Electrode holder	1
11 C10-660	0558001625, 35660	Gas swirl baffle, 8 hole, standard, 300 – 600 amp	1
C47-142	0558002533, 948142	Gas swirl baffle, 4 hole, 100 – 280 amp	1

Maintenance items

Centricut part number	Reference number	Description	Pkg qty
12 C47-073	37073	Screw, contact ring assembly	1
13 C47-071	37071	Contact ring assembly	1
14 C47-083	37083	Insulator body	1
15 C47-066	37066	Torch body	1
9 C96-925	0558001825	Torch body modular	1
C47-006	181W89	O-ring, nozzle	5
7 C47-998	N/A	O-ring, kit, insulator bod	1
C120-012	N/A	Wrench, elec/nozzle	1
6 C120-013	N/A	Wrench, nozzle base	1

* Centricut part features a unique Hypertherm design that differs from the OEM design.

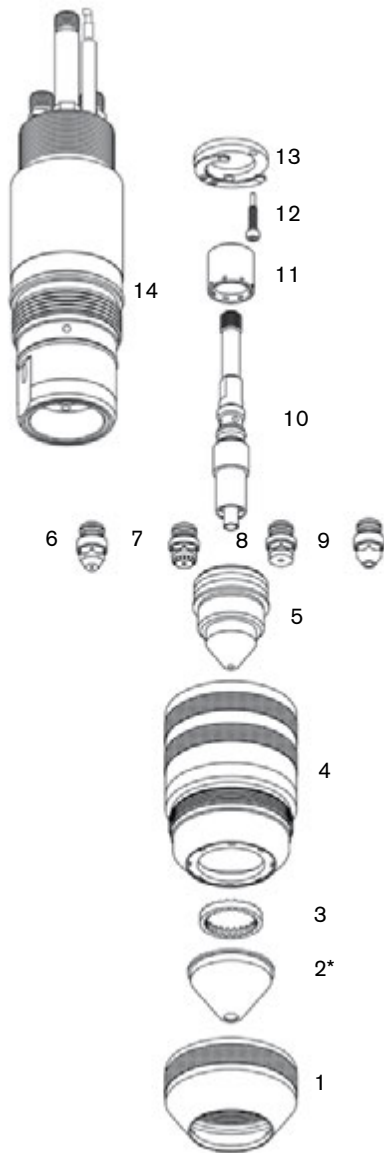


Significantly improve:

Consumable Life

Cutting speed

Cut quality



**New technology
improvements!**

Consumables

Centricut part number	Reference number	Description	Pkg qty
1 C47-081	37081	Shield retainer	1
L122-616	0558004616	Shield retainer, insulated	1
2 C122-624	0558007624	Shield, 2.4 mm, 45 – 55 amp	1
C122-130	0558006130	Shield, 3.0 mm, 35 – 50 amp	1
C122-141	0558006141	Shield, 4.1 mm, 100 – 280 amp	1
C122-166	0558006166	Shield, 6.6 mm, 260 – 450 amp	1
C122-199	0558006199	Shield, 9.9 mm, 360 – 600 amp	1
3 L47-796	21796	Diffuser, 50 amp	1
C47-944	21944	Diffuser, 100 – 600 amp	1
4 C47-082	37082	Nozzle retaining cap	1
5 C122-908	0558006908	Nozzle, CoolFlow™, .8 mm, 35 amp	1
C122-8010	0558008010	Nozzle, CoolFlow, 1.0 mm, PR, 45 – 55 amp	1
C122-6010	0558006010	Nozzle, CoolFlow, 1.0 mm, 50 amp	1
C122-014	0558006014	Nozzle, CoolFlow, 1.4 mm, 100 amp	1
C122-018	0558006018	Nozzle, CoolFlow, 1.8 mm, 130 amp	1
C122-020	0558006020	Nozzle, CoolFlow, 2.0 mm, 200 amp	1
C122-023	0558006023	Nozzle, CoolFlow, 2.3 mm, 280 amp	1
C122-025	0558006025	Nozzle, CoolFlow, 2.5 mm, 300 amp	1
C122-030	0558006030	Nozzle, CoolFlow, 3.0 mm, 360 amp	1
C122-036	0558006036	Nozzle, CoolFlow, 3.6 mm, 450 amp	1
C122-041	0558006041	Nozzle, CoolFlow, 4.1 mm, 600 amp	1
6 C122-1059	0558005459	Electrode, SilverLine®, O ₂ , 50 amp	1
7 C122-1014	0558003914	Electrode, SilverLine, O ₂ , 100 – 300 amp	1
8 C122-1091	0558007791	Electrode, SilverLine, O ₂ , 360 – 450 amp	1
9 C122-928	0558003928	Electrode, SS/AL, 600 amp	1
10 C122-924	0558003924	Electrode holder	1
11 C122-457	0558005457	Gas swirl baffle, 4X.022, 35 – 70 amp	1
C122-533	0558002533	Gas swirl baffle, 4X.032, 100 – 280 amp	1
C122-530R	0558002530R	Gas swirl baffle, 8X.047, reverse, 360 – 450 amp	1
C10-660	0558001625	Gas swirl baffle, 8X.047, 300 – 600 amp	1

Maintenance items

Centricut part number	Reference number	Description	Pkg qty
12 C47-073	37073	Screw, contact ring	1
13 C47-071	0558003858	Contact ring assembly	1
C10-483	0558001626	Double threaded mounting tube	1
14 C122-804	0558003804	Torch body	1

TALAS

Paardenkerkhofstraat 56 B-2800 Mechelen
Tel. +32(0)15.61.60.07 Fax. +32(0)15.61.75.27
Email. info@talas.be
www.talas.be