

# PLAZABILL

The logo for the musical 'Tuck Everlasting' features the word 'TUCK' in large, 3D wooden letters. A white ribbon with the word 'EVERLASTING' in red, serif font is draped across the letters. The background is a soft-focus green forest scene.

**TUCK**  
**EVERLASTING**  
**THE MUSICAL**

**PLAZA**  
.. THEATRE COMPANY ..

**TONIGHT'S PRODUCTION IS  
PROUDLY SPONSORED BY**



[www.HewlettOfficeSystems.com](http://www.HewlettOfficeSystems.com)

*It's great to be back at Plaza!*

*Justin & Judge Sydney Hewlett*



# PLAZA

.. THEATRE COMPANY ..

in collaboration with the  
**Cleburne Performing Arts Foundation**  
Production of...



The logo features the word "TUCK" in large, 3D wooden letters. A white ribbon with the word "EVERLASTING" in red, serif capital letters is wrapped around the letters. Below this, the words "THE MUSICAL" are written in red, sans-serif capital letters.

## THE MUSICAL

**Music by**  
**CHRIS MILLER**

**Lyrics by**  
**NATHAN TYSEN**

**Book by**  
**CLAUDIA SHEAR**  
**TIM FEDERLE**

Based on the novel *TUCK EVERLASTING* by  
**NATALIE BABBITT**

**Directed by JaceSon P. Barrus**  
**Assistant Director: A. Solomon Abah Jr.**

**June 11 - July 3, 2021**



*Any video or audio taping, filming, recording or broadcast of this play (musical or otherwise) is strictly prohibited.*

## **TUCK EVERLASTING**

is presented through special arrangement with  
**CONCORD THEATRICALS**  
who supplied all authorized performance materials.  
Phone: (866) 598-8449 | [concordtheatricals.com](http://concordtheatricals.com)

# *Crosier-Pearson Cleburne*

---

## FUNERAL HOME

is a proud supporter of  
**Plaza Theatre Company**

*Together serving Cleburne and Johnson County.*



**Carol & Jimmy Wray**

*Our Funeral Directors  
have been serving  
families for over 190  
years combined and  
counting.*

*Our families serving  
yours now and for  
years to come.*







HEAR BETTER. BREATHE BETTER.



## **Voted Best Hearing Aid Practice and Best Doctor's Office** by Readers of the Cleburne Times Review

**Dr. Ted Benke** is a Board Certified ENT specialist and a Fellow of The American College of Surgeons

8:00 a.m. to 5 p.m., M - F  
Most insurances and Medicare accepted  
**(817) 641-3750** | [www.DrBenke.com](http://www.DrBenke.com)  
1317 Glenwood Drive | Cleburne, Texas 76033

PLAZA THEATRE COMPANY

TIME TO  
*Play!*  
2021



**PLAZA**  
THEATRE COMPANY  
Dudley Hall

JUN 11TH - JUL 3RD

**TUCK**  
EVERLASTING  
**TUCK**

RESERVATIONS AT 817-202-0600 OR WWW.PLAZACO.ORG

JUL 9TH - JUL 31ST



**Pollyanna**



RESERVATIONS AT 817-202-0600 OR WWW.PLAZACO.ORG

**PLAZA**  
THEATRE COMPANY

AUG 6TH - AUG 28TH

**TITANIC**  
THE MUSICAL

Stories and Book by Peter Stone  
Music and Lyrics by Michael Tye

RESERVATIONS AT 817-202-0600 OR WWW.PLAZACO.ORG

SEP 3RD - SEP 25TH



**SHERWOOD**  
THE ADVENTURES OF  
**ROBIN HOOD**



RESERVATIONS AT 817-202-0600 OR WWW.PLAZACO.ORG

**PLAZA**  
THEATRE COMPANY

OCT 1ST - OCT 23RD

**SMOKE**  
ON THE  
**MOUNTAIN**

Adapted by David Ives  
Music and Lyrics by Mark S. Bernstein

RESERVATIONS AT 817-202-0600 OR WWW.PLAZACO.ORG

OCT 29TH - NOV 20TH



**LITTLE HOUSE**  
ON THE  
**PRAIRIE**



RESERVATIONS AT 817-202-0600 OR WWW.PLAZACO.ORG

**PLAZA**  
THEATRE COMPANY

NOV 26TH - DEC 23RD

**elf**  
The Musical

Book by Thomas Meehan & Bill Hokeness  
Music by Matthew Sklar  
Lyrics by Chad Beguelin  
Based on the 1986 Live Action Film by Jon Turteltaub

RESERVATIONS AT 817-202-0600 OR WWW.PLAZACO.ORG

# 2021 SEASON



Pick up a brochure in the Lobby  
for more information about  
Season Tickets!



408 S. Main St  
Cleburne TX 76033  
(817)645-1000

Hours of Operation  
Monday-Thursday 6am-8pm • Friday 6am-9pm  
Saturday 6am-8pm • Sunday 7am-2pm

**BREAKFAST • LUNCH • DINNER**



HannahMidkiffPhotography.com

Wedding | Engagement | Maternity | Birth | Family | Senior | Headshots | Events

*"A smile  
is the  
shortest  
distance  
between  
two people"*

*Stewart Orthodontics*

Keith J. Stewart, D.D.S., P.C.

Complimentary  
exam and x-ray

Orthodontics for Children and Adults  
110 Del Rio Ct. Cleburne, TX 76033 **817-641-3331**



## The Cast

Jesse Tuck .....	DAVID MIDKIFF
Mae Tuck .....	MEREDITH BROWNING
Angus Tuck .....	BRIAN LAWSON
Miles Tuck .....	JARRETT SELF
Winnie Foster (Thurs. & Sat. evening) ...	NEVAEHA WILSON
Winnie Foster (Fri. & Sat. matinee) .....	RUTH POWER
Man in the Yellow Suit .....	LUKE HUNT
Betsy Foster .....	TINA BARRUS
Nana .....	KATHY LEMONS
Hugo (Fri. & Sat. matinee).....	GAVIN CLARK
Hugo (Thurs. & Sat. evening) .....	WILLIAM POWER
Constable Joe .....	KEVIN POOLE

## Storytellers

ALVARO AGUILAR, EDEN BARRUS, MIMI BARRUS,  
ALINA JENNINGS, ETHAN LEAKE,  
MEGAN A. LILES, JOSH MCLEMORE



□ Denotes a member of the “Plaza Theatre Company 20 Club.”

Actors, Directors, Stage Managers, Designers and Crew who have participated in twenty productions at Plaza Theatre Company are inducted into the “Plaza Theatre Company 20 Club.” Originally founded in November 2006, Plaza Theatre Company has produced musicals, comedies, children’s shows and other special events totaling over 200 performances to over 30,000 patrons each year.



# Production Team

DIRECTOR ..... JaceSon P. Barrus  
ASSISTANT DIRECTOR ..... A. Solomon Abah Jr.  
MUSIC DIRECTOR ..... Megan A. Liles  
CHOREOGRAPHER ..... Tabitha Ibarra, Mimi Barrus  
STAGE MANAGEMENT ..... Lindsay Batt  
COSTUME DESIGN ..... Tina Barrus  
COSTUME CONSTRUCTION ..... Drenda Lewis  
SET DESIGN ..... Jay Lewis  
LIGHT DESIGN ..... Cameron Barrus  
SOUND DESIGN ..... G. Aaron Siler  
PROPERTY DESIGN ..... Soni Barrus  
SPECIALTY PROPS ..... Deb and Mark Dandridge  
SET CONSTRUCTION & BUILD ..... Jay Lewis, JaceSon Barrus,  
..... Saul Ibarra  
SET DECORATING ..... Soni Barrus, Jay Lewis,  
..... Mark & Deb Dandridge  
LIGHT/QLAB/TURNTABLE OPERATOR ..... Lindsay Batt  
SOUND BOARD OPERATOR ..... Hayden Capp  
BACKSTAGE CREW ..... Mads Sandbox, Matthew Leake,  
..... Mitchell Siler

Special Thank you to Granbury Theatre Company



## Wellness Fitness

Classical Pilates  
By Private Appointment

The Wright Building  
Cleburne, Texas  
(817) 907-0779

## Director's Note

It's been said that the greatest commodity of all is time. It's the great equalizer as no matter where we're born, what privilege we are given or wealth we amass, what influence we attain or how much praise we accumulate - all of it is subordinate to time. For every single living soul on the planet, time is finite. One day, whether sooner or later, we will each draw our last breath and leave this life behind.

Certainly this past year has brought this fact to life in vivid detail for each of us. As the pandemic caused a great upheaval around the world and in each of our communities, many of us found ourselves with more spare time on our hands than we were probably used to. And we tried to use the time - many learned new hobbies, read books they'd been meaning to catch up on, tried new recipes, undertook major or minor home improvements, used Zoom a lot, watched lots and lots of Netflix, and the list goes on.

But if you could choose to live forever - to have infinite time - would you do it? I put this question to our cast and as you might imagine the answers were many and varied. Some thought it would be a chance to do good in the world - to make a difference. Others said they definitely would not choose it because then life would lose much of its purpose, it's meaning. But above all else from the answers one thing was clear - the question touched a nerve. People gave it serious thought and delved deeply into how they felt about it. And maybe that's because we've all had a much better sense over the last year or so of how it would feel to have a sometimes seeming eternity of time on our hands.

Natalie Babbitt wrote an enthralling novella that examined these ideas beautifully and wrote interesting and compelling characters. First adapted into a feature film and then into a Broadway musical in 2015, the story in the musical doesn't stray from the core question posed in the original book. If you could choose to live forever, would you? Our hope is that as you witness *The Story of Winnie Foster* and the journey she takes, that you might ask yourself the same question.

Here at Plaza Theatre Company we've also had a lot of "extra" time over these past 15 months as we closed down our indoor shows in March of 2020. And throughout the shutdown our entire focus has been on returning to full production once it was safe to do so. This production represents all of the efforts that have been made to restore PlazaCo to full time producing status and as Artistic Director of the Company I feel very privileged to have undertaken this show with such a magnificent production staff, cast and crew.

Thank YOU for your willingness to join us at the theater once again. If the last 15 months has taught us anything it's to cherish the time you have doing what you love and we now embrace that here more than ever. If there were ever a perfect show to be the first one back, *Tuck Everlasting* is it. We hope you enjoy your experience as much as we have enjoyed creating this performance for you.

Good will ever come!

JaceSon P. Barrus

# LONE STAR INSURANCE AGENCY

We Keep **YOU** The Focus

An independant agent  
that works for you!

Naaman Maxedon  
agent@lsiatx.com



- Auto & Home
- Business & Commercial
- Investment Properties
- Life Insurance
- Classic Car
- Rental Properties  
*and much more!*

*Family owned and operated*

**(817) 641-3676 | lsiatx.com**



1200 W. Henderson St. Suite A  
Cleburne, TX 76033  
*"across from The Rock"*

# Musical Synopsis

Setting: 1806 - 1950 Treegap, New Hampshire

## ACT ONE

### Scene 1: The Spring

Live Like This ..... Winnie, Mae, Miles, Yellow Suit, Jesse, Storytellers

### Scene 2: Foster Parlor

Good Girl Winnie Foster ..... Winnie, Mother, Storytellers

### Scene 3: Foster Front Garden

Join The Parade ..... Yellow Suit, Storytellers

### Scene 4: The Spring to tree top

Top of the World ..... Jesse, Winnie, Storytellers

### Scene 5: The Spring

### Scene 6: Foster Garden

Hugo's First Case ..... Hugo

Hugo's First Case (Reprise) ..... Hugo, Constable Joe

### Scene 7: Tuck Cottage

Story of the Tucks ..... Mae, Wiles, Jesse, Winnie

### Scene 8: Tuck Attic

My Most Beautiful Day ..... Mae

Beautiful Day (Part 2) ..... Mae, Angus

### Scene 9: Tuck Porch

### Scene 10: The Fair

Join The Parade (Reprise) ..... Yellow Suit, Carnival Workers

Partner in Crime ..... Jesse, Winnie, Ensemble

### Scene 11: The Silo

Seventeen ..... Jesse, Yellow Suit, Winnie, Ensemble

**There will be a 15 minute intermission.**



# Musical Synopsis

## ACT TWO

### Scene 1: Backstage at the Fair

Ev'rything's Golden ..... Man in the Yellow Suit

### Scene 2: Foster's Fence

### Scene 3: Tuck Cottage

Seventeen (Reprise) ..... Winnie

Time ..... Miles

### Scene 4: Stump Outside Tuck Cottage

Time (Reprise) ..... Mae, Jesse, Angus, Miles

### Scene 5: Foster Parlor

Ev'rything's Golden (Reprise) ..... Man in the Yellow Suit

### Scene 6: Path Near Wood

You Can't Trust a Man ..... Constable Joe, Hugo

### Scene 7: The Lake

The Wheel ..... Angus, Winnie, Storytellers

### Scene 8: The Spring

Story of the Man in the Yellow Suit ..... Man in Yellow Suit

### Scene 9: Path Back Home

Everlasting ..... Winnie

### Scene 10: The Ballet

### Scene 11: Tucks at the Grave

The Wheel (Finale) ..... Jesse, Mae, Miles, Angus, Storytellers, Company

### Running Time:

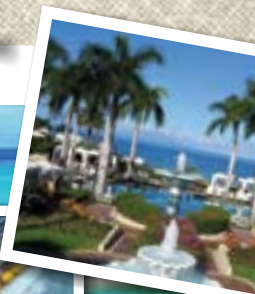
Act 1 - :57

Act 2 - :50

Let us help with your leisure, business, youth groups or group cruises!

# **BATES** etc. **Travel**

## Creating Memorable Experiences



© 2010 Las Vegas Convention and Visitors Authority



Beth 817.366.7634 | Betty 817.988.4849 | June 817.577.4422

## *Who's who in the cast*

**DAVID MIDKIFF** (Jesse Tuck) David is thrilled and grateful to be back on stage! David is a rising sophomore at the University of Michigan studying Musical Theatre. Credits include Henry/Dance Captain in NEWSIES! at Lyric Stage, Jesse Tuck in TUCK EVERLASTING, and Benjamin in JOSEPH...DREAMCOAT at Casa Mañana, Scary Big Kid in MATILDA, Co-Choreographer/Benjamin/Swing in JOSEPH...DREAMCOAT, Race/Asst. Choreographer in NEWSIES!, Prince Eric in THE LITTLE MERMAID, and Dance Captain for WHITE CHRISTMAS at The Firehouse Theater. He has also been a featured dancer in eight of iTheatrics Choreography DVDs. "Hey Hannah, thanks for teaching me how to dance in our kitchen when I was five, I love you." IG: @davidmidkiff

**MEREDITH BROWNING** (Mae Tuck) Meredith has been active for many years throughout the DFW area as an actor, opera singer, and music director, but some of her favorite performances have been right here on the Plaza stage. You may remember her as Maria in THE SOUND OF MUSIC, Marian in THE MUSIC MAN, Betty in WHITE CHRISTMAS, and the title role in MARY POPPINS.. She is also very proud of her work as music director for THE HUNCHBACK OF NOTRE DAME, for which she won a Column Award. Other favorite roles include Baker's Wife in INTO THE WOODS, Mabel in PIRATES OF PENZANCE, Guenevere in CAMELOT, Amalia in SHE LOVES ME, and Luisa in ZORRO THE MUSICAL. While 2020 has been a bit slow for performing, Meredith was privileged to create the role of Delia in the outdoor premiere of the children's opera, STONE SOUP with the Fort Worth Opera. Much love to Tyson, her husband of almost 25 years!

**JARRETT SELF** (Miles Tuck) Jarrett Self is an Oklahoma native, graduating from Southeastern Oklahoma State University in 2017 with a BFA in Musical Theatre. While attending, he received multiple honors, including Best Actor in a Play, Best Actor in a Musical, and Vocalist of the Year. He has performed with numerous theaters such as the Oklahoma Shakespearean Festival, Casa Mañana, the National Theatre for Children, and Granbury Theatre Company. Some of his favorite acting credits include: Davey (NEWSIES), Jinx (FOREVER PLAID), Jason (Euripides' MEDEA), Malcolm/Porter (MACBETH), Tranio (THE TAMING OF THE SHREW), and Alfred P. Doolittle (MY FAIR LADY).

**BRIAN LAWSON** (Angus Tuck) Brian is absolutely delighted to be back on the Plaza stage. He is also very grateful to be able to share the stage

# **BEST VALUE**

**ROYCE'S PHARMACY**



- Auto Refills
- Delivery
- Bathroom Safety Products

502 N Main

Cleburne, TX

**817-645-2445**

[mybestvaluerx.com](http://mybestvaluerx.com)



## *Who's who in the cast*

with such an amazing cast and crew. You may remember Mr. Lawson from other PlazaCo productions such as Beast in BEAUTY AND THE BEAST, Horton the Elephant in SEUSSICAL THE MUSICAL, Clopin Trouillefou in The HUNCHBACK OF NOTRE DAME and Smudge in FOREVER PLAID. Brian would like to personally thank his friends and family for their continuous love and support. "We'll stay more connected. We'll do what we can. We'll stop sitting, wondering why."

**RUTH POWER** (Winnie Foster - Friday & Saturday matinee) Ruth Power Ruth is overjoyed to be back on stage as Winnie Foster, a dream role for her. She was most recently seen at Plaza as Matilda in MATILDA the MUSICAL, Annie in ANNIE JR, and James in JAMES AND THE GIANT PEACH. Other favorite roles include Kate in ANNIE and Hortensia in MATILDA at Casa Manana; Molly in ANNIE, Amaryllis in THE MUSIC MAN, Jane Banks in MARRY POPPINS, and Young Anna in FROZEN JR at Plaza. Ruth lives in Granbury and is active in school and sports. She is a current Plaza Academy student and trains with Ashley Greene and Shannah Rae vocal studio. Ruth would like to thank her family for their support, and Plaza Theatre Company for believing in her.

**NEVAEHA WILSON** (Winnie Foster - Thursday & Saturday evening) Nevaeha Wilson is ecstatic to have the opportunity to be playing Winnie Foster in TUCK EVERLASTING! This is Nevaeha's first leading role at Plaza Theatre CO. and she is honored to have been invited to play this part. She has been welcomed by a loving and supportive cast, who are also very talented. She has learned so much from them and is excited to learn and grow even more. Some of her favorite past production roles have included: a Nubian in AIDA, Jasmine in ALADDIN KIDS, and Tiger Lily in PETER PAN Jr. In her spare time she enjoys reading, playing music, singing in her bands: Electric Walrus and Grace Evermore, playing sports, being out in nature, spending time with friends and family, and playing video games. She would like to thank everyone for being patient and kind to her, and she would especially like to thank her parents and siblings for doing their best to work around her busy schedule, driving her places, and for bearing through her endless singing and rehearsing ;).

**LUKE HUNT** (Man in the Yellow Suit) This is Luke's 54th production with Plaza Theatre Company and 11th show as a director. He has appeared as an actor at Plaza most recently in the role of Ebenezer Scrooge in Plaza's streaming production of A CHRISTMAS CAROL. He received the 2019

## Who's who in the cast

Column Award for Best Actor in a Play Non Equity for Atticus Finch in Plaza's production of TO KILL A MOCKINGBIRD. He is the Theatre Arts Director at Alvarado High School. He is a co-owner of Dance Across Cleburne with his wife, Rachel.

TINA BARRUS (Betsy Foster/ Costume Designer) Tina is one of the co-founders of Plaza Theatre Company and has costumed well over 100 productions since Plaza opened in 2007, but she rarely gets the chance to shine on stage. With TUCK EVERLASTING she is getting to take part in her first theater love which is performance. Plaza patrons will remember her some of her previous favorite roles as Lina Lamont in SINGIN' IN THE RAIN or as Rose in ENCHANTED APRIL. She and husband JaceSon are the proud parents of seven great children and the grandparents of two wonderful granddaughters.

KATHY LEMONS (Nana) Through the years Kathy has played on the Plaza stage many times. Some of her favorite roles at Plaza have been: Edith Wilkins in DEAR RUTH, Maude Atkinson (Column Nominee) in TO KILL A MOCKINGBIRD, Mrs. Peacock in CLUE, Mother Abbess in SOUND OF MUSIC, Marmee in LITTLE WOMEN, Glinda in WIZARD OF OZ, Marilla in ANNE OF GREEN GABLES. Miss Andrew, the evil nanny, in MARY POPPINS. Additional roles include: Alice Beinecke (Column Nominee) in ADDAMS FAMILY, Mrs. Ellie Banks in FATHER OF THE BRIDE, Penelope Sycamore in YOU CAN'T TAKE IT WITH YOU. Kathy has read the story of the Tuck family several times over the years as her children, and now her grandchildren, have read the book in school. She is thrilled to now be a part of the story as it comes to life in this beautiful musical. "In the end, it's not the years in your life that count.

# CENTRAL STATION TOYS BRICKS, GAMES & MORE

**More than just a store, it's an experience!**

High quality toys and collectables  
Birthday parties  
Game nights

**Stop by and  
join the fun!**

## *Who's who in the cast*

It's the life in your years." – Abraham Lincoln. As always, "All my love to Jim for keeping a song in my heart!" Eph. 3:20-21

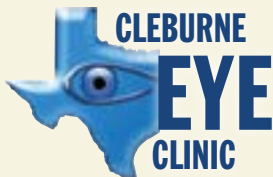
**GAVIN CLARK** (Hugo - Friday & Saturday matinee) Gavin is very excited to be playing Hugo in TUCK EVERLASTING! Through quarantine, Gavin performed in several online cabarets, the junior production MAD-AGASCAR JR, and the summer camp THE ADDAMS FAMILY SCHOOL EDITION. Prior to quarantine, Gavin played such roles as Bruce in MATILDA, Pugsley in THE ADDAMS FAMILY and Dill in TO KILL A MOCKINGBIRD. Gavin would like to thank his parents for helping get him through this difficult time, his best friends Ivy and Mimi, and director Jaceson for giving him the opportunity to be back!

**WILLIAM POWER** (Hugo - Thursday & Saturday evening) William Power William is honored to be a part of this spectacular cast and back on the Plaza stage! He was most recently seen at Plaza as Michael in MATILDA THE MUSICAL. Other favorite roles include Crutchie in NEWSIES at Plaza Theatre, Cane in CHILDREN OF EDEN at Plaza, and Colin Craven in THE SECRET GARDEN with Stolen Shakespeare Guild. William is a current Plaza Academy student. William would like to thank his family for their support, and Plaza Theatre Company for giving him this opportunity.

**KEVIN POOLE** (Constable Joe) Years and years ago, in the winter of 2019, Kevin last appeared on the Plaza stage in the production of WHITE CHRISTMAS. He is so excited to be back and to see most everyone's faces again. Kevin is a veteran actor and director here at PTC and truly cannot wait to see what great things the future holds for us. Thank you to our patrons for your continued support of Plaza. We wish you peace, happiness and, in the spirit of the folks from Treetop, a long and healthy life.

**ALVARO AGUILAR** (Storyteller) Alvaro is excited to be back with his Plaza family! He is currently a junior at Haverford College in Pennsylvania. Fun fact, Alvaro has not performed in almost two years! Previous roles include: Chino in WEST SIDE STORY, Sonny in IN THE HEIGHTS, Romeo in NEWSIES, and Benjamin in JOSEPH... DREAMCOAT. Alvaro is beyond grateful to be back on stage with the Plaza gang. He would also like to thank his parents for their constant love and support!

**EDEN BARRUS** (Storyteller) Eden grew up on the Plaza stage and



*In Affiliation with*



**TEXAS EYE AND LASER CENTER**

DR. BRIAN D. RANELLE DR. JERRY G. HU



Hurst 1872 Norwood Dr., Suite 200, Hurst, TX 76054  
Ft. Worth 3405 Locke Ave., Suite 100  
Ft. Worth, TX 76107

## Premier Eye Care You Deserve!

- ✓ Blade-Free All-Laser LASIK
- ✓ Blade-Free Cataract Surgery with LifeStyle Lenses: ReSTOR®, Tecnis®, AND Crystalens®
- ✓ Comprehensive eye exams
- ✓ Cataract lenses and glasses
- ✓ Glaucoma - Diagnosis and Management
- ✓ Diabetic, Retinal, and Hypertension - Exam and Management
- ✓ Corneal Transplants
- ✓ Ask about our 0% financing



Crystal Eylar, OD  
Traci Kuykendall, OD  
Karl Wedel, OD

Cory Brown, OD  
Joe Martin, OD  
Heath Bullard, OD

Call today to schedule an appointment! **Tel: (817) 645-2411**

Cleburne Eye Clinic 839 N. Nolan River Rd. www.greateyedoctor.com Family Eye Clinic - 4460 E. Hwy 287 Midlothian, Texas  
PROVIDING CLEBURNE AND SURROUNDING COMMUNITIES COMPLETE EYE CARE SINCE 1949

# Gourmet Hot Dogs & More!

- Serving Vienna Beef products
- Vegetarian & Gluten-Free options available
- Live Music, Open Mic, Karaoke, Outside Patio

**FREE DELIVERY!**  
**817-556-1040**

www loafndog.com  
208 E Chambers St.  
Cleburne, TX 76031





## *Who's who in the cast*

has been appearing in productions here since she was 6 years old. She adored playing Ariel in THE LITTLE MERMAID, Teen Anne in ANNE OF GREEN GABLES and Boots in NEWSIES THE MUSICAL among other roles. Eden has been living in Utah for much of the past year and just finished a production of FREAKY FRIDAY at Terrace Plaza Playhouse where she played Savanna. She's a dancer at heart though and loves getting to perform once again with TUCK EVERLASTING.

MIMI BARRUS (Storyteller/Choreographer) PlazaCo was founded at almost the very same time that Mimi was born so the theater has been her second home since she was a baby. She has loved playing Mary Lennox in THE SECRET GARDEN, Junie B. Jones in JUNIE B. JONES JR. and Scout Finch in TO KILL A MOCKINGBIRD for which she received the Best Actress Column Award (non-Equity) in 2018. Though she is the fifth of seven Barrus children, she is the oldest still living at home and takes on oldest child duties with her little brothers JJ and Charlie quite often. With TUCK EVERLASTING Mimi is making her Choreographing debut together with sister Tabitha Ibarra and she loves that you are getting to see their shared work on this show. Enjoy!

ALINA JENNINGS (Storyteller) Alina is so excited to be back on the Plaza stage and with such an amazing cast. She is a graduate of Fort Worth Academy of Fine Arts where she studied musical theater for 8 years. Previous shows: Consuela WEST SIDE STORY, Sylvia ALL SHOOK UP, Dynamite HAIRSPRAY, Buffy STARLIGHT EXPRESS, Hannigan ANNIE, Jetsome LITTLE MERMAID, Cowardly Lion WIZARD OF OZ and many more. She has been New York to be in ITheatrics Choreography DVDs where she was a dancer for Nice Work..... and played the role of Roxie in Chicago! Alina would also like to thank her fabulous sisters and personal stylists Keshia and Saskia and her wonderful mother for always supporting her.

ETHAN LEAKE (Storyteller) Some of Ethan's past roles include Kristoff in FROZEN JR, Horton in SUESSICAL JR and Reverend Shaw in FOOT-LOOSE JR at Plaza Jr., Newsie in NEWSIES at Plaza, and an Ancestor in ADDAMS FAMILY at Granbury Theatre.

JOSH MCLEMORE (Storyteller) Joshua is a recent graduate of Liberty University Online Academy and a current student at Plaza Academy. He loves performing at Plaza and is very excited to be in TUCK EVERLAST-

*Now Serving the Wonderful People  
of Johnson County!*



—THE—  
**HYDE**  
LAW FIRM, PLLC

**ELDER LAW**  
Medicaid Planning  
Guardianship  
Power of Attorney  
Wills & Probate  
Estate Planning

**FAMILY LAW**  
Divorce  
Child Custody  
Child Support  
Paternity  
Enforcement

**MUNICIPAL  
LAW**

**CRIMINAL  
DEFENSE**  
Felonies  
DWI  
Misdemeanors  
Drug Violations  
Juvenile Crimes  
Traffic Tickets

*Voted Best Attorney  
and Best Law Firm!*



**PERSONAL  
INJURY**  
Accidents  
Car Wrecks  
18-Wheeler  
Accidents  
Commercial  
Accidents



**THE HYDE LAW FIRM**  
YOUR LEGAL PARTNERS

**817-579-LWYR (5997)**

827 W. Pearl St.  
Granbury, TX 76048  
[www.HydeFirm.com](http://www.HydeFirm.com)

## *Who's who in the cast*

ING. Joshua's favorite roles have been Almanzo in *LITTLE HOUSE ON THE PRAIRIE*, Willard in *FOOTLOOSE*, a featured dancer in *IN THE HEIGHTS*, a newsie in *NEWSIES*, and a dance Corp member in *HAIR-SPRAY*, God in *CHILDREN OF EDEN JR.* He would like to thank his friends and family for their support, he hopes you enjoy the show.

MEGAN A. LILES (Storyteller/Musical Director) Megan is a Filipino-American mezzo-soprano with a passion for music education, storytelling, and advocating for authentic cultural representation in media. She is so excited to be back on the Dudley (indoor) stage, having last performed in Plaza's outdoor film production of *A CHRISTMAS CAROL*. Her favorite Plaza roles include Florika in *THE HUNCHBACK OF NOTRE DAME*, Anita in *WEST SIDE STORY* (Column Award Nominee), Nikki Crandall/Helsa Wenzel in *THE MUSICAL COMEDY MURDERS OF 1940*, and The Tallest Box in *WHITE CHRISTMAS*. She received her Bachelor of Music degree in Choral Music Education from The University of Texas at Austin-Butler School of Music, and her music directing credits include *SHREK THE MUSICAL*, *CHILDREN OF EDEN JR.*, and *GTK... FOOTLOOSE*. Many thanks to JaceSon for this opportunity to venture to Treegap, NH. "Being part of the whole thing, that's the blessing."

JACESON P. BARRUS (Director) As one of the original founding producers at Plaza Theatre Company, JaceSon can't begin to describe what a thrill it is to be able to create and present live theater once again. He's been a part of all 141 productions offered at PlazaCo in some capacity since the company's inception in 2007 and feels honored to be able to direct this homecoming production of *TUCK EVERLASTING*. He has directed more than a few productions that have been on the PlazaCo boards, among them *WHITE CHRISTMAS*, *WEST SIDE STORY*, *ENCHANTED APRIL* and as co-Director of *AIDA* for which he received the Best Director Column Award non-Equity in 2019. JaceSon and his wife of 28 years still love being parents the most and their seven children bring mounds of joy into their lives so JaceSon sends his abiding love to Tabitha, Parker, Cameron, Eden, Miranda, Jonah Jaxon and Charleston.

A. SOLOMON ABAH JR (Assistant Director) Solomon is excited to be back at Plaza Theatre Co. He has performed in DFW and is always looking for the next challenging role. Solomon is thrilled to be assistant directing this amazing cast of *TUCK*. You may remember Solomon from *DRIVING*

## *Who's who in the cast*

MISS DAISY as Hoke Coleburn. Solomon would like to thank JaceSon for this opportunity! Enjoy the story of the Tucks!

TABITHA IBARRA (Choreographer) Tabitha could not be more pleased to be back choreographing for PlazaCo. Favorite choreography credits include NEWSIES THE MUSICAL, MATILDA THE MUSICAL, IN THE HEIGHTS, and WEST SIDE STORY. She has won Column Awards for her work on ANNE OF GREEN GABLES, WEST SIDE STORY, and NEWSIES THE MUSICAL, as well as choreography awards at the Junior Theatre Festival for MARY POPPINS JR, THE LION KING JR, and SEUSSICAL JR. Along with working for Plaza Theatre Company, Tabitha enjoys running her own Private Vocal Studio. Tabitha's favorite role is wife to Saúl and mommy to Gemma and Nova. Tabitha's favorite thing about working on this show has been choreographing with her amazing sister Mimi.

LINDSAY BATT (Stage Manager) Lindsay is ecstatic to stage manage TUCK EVERLASTING. She has stage managed many shows around the D/FW area, with some of her favorites being HUNCHBACK, HAIR-SPRAY, RAGTIME, WEST SIDE STORY x 2, AIDA, MAN OF LAMANCHA, FREAKY FRIDAY, THE LITTLE MERMAID, THE ADDAMS FAMILY x 2, JOSEPH...DREAMCOAT x 2, and BIG RIVER. Lindsay is a multiple COLUMN AWARD Winner and is also on the Board of Directors for THE COLUMN AWARDS. "A special thanks to William, Chloe and Zoe for continuing to encourage my love of theater"

## **Charles Wells, CPA**

**503 West Chambers  
Cleburne, Texas 76033  
817-556-2966**

---

*One Stop Source for Tax, Financial, Bookkeeping,  
and Planning Services to address personal and  
business needs.*

**A Quickbooks Professional Advisor**

---

*It is a pleasure to support Plaza Theatre as they present  
quality entertainment for our enjoyment!*



# BRADLEY LAW FIRM

ATTORNEYS AT LAW

**Keith Bradley**

13 E. Henderson Cleburne, TX 76031  
817-645-3993

[www.bradleylawyers.com](http://www.bradleylawyers.com)

TAKE A CLOSER LOOK . . .

## WHITE BLUFF RESORT

3,500 acres. Marina on Lake Whitney. 2 golf courses. 4 pools. Dining.

Affordable Homes & Lots



**Emily Morris, Realtor**

**254-694-1111**

## Robert O. Kelly, DDS, FAGD, PLLC.

General & Cosmetic Dentistry

302 N. Ridgeway

Cleburne, TX 76033

Phone 817-641-2511

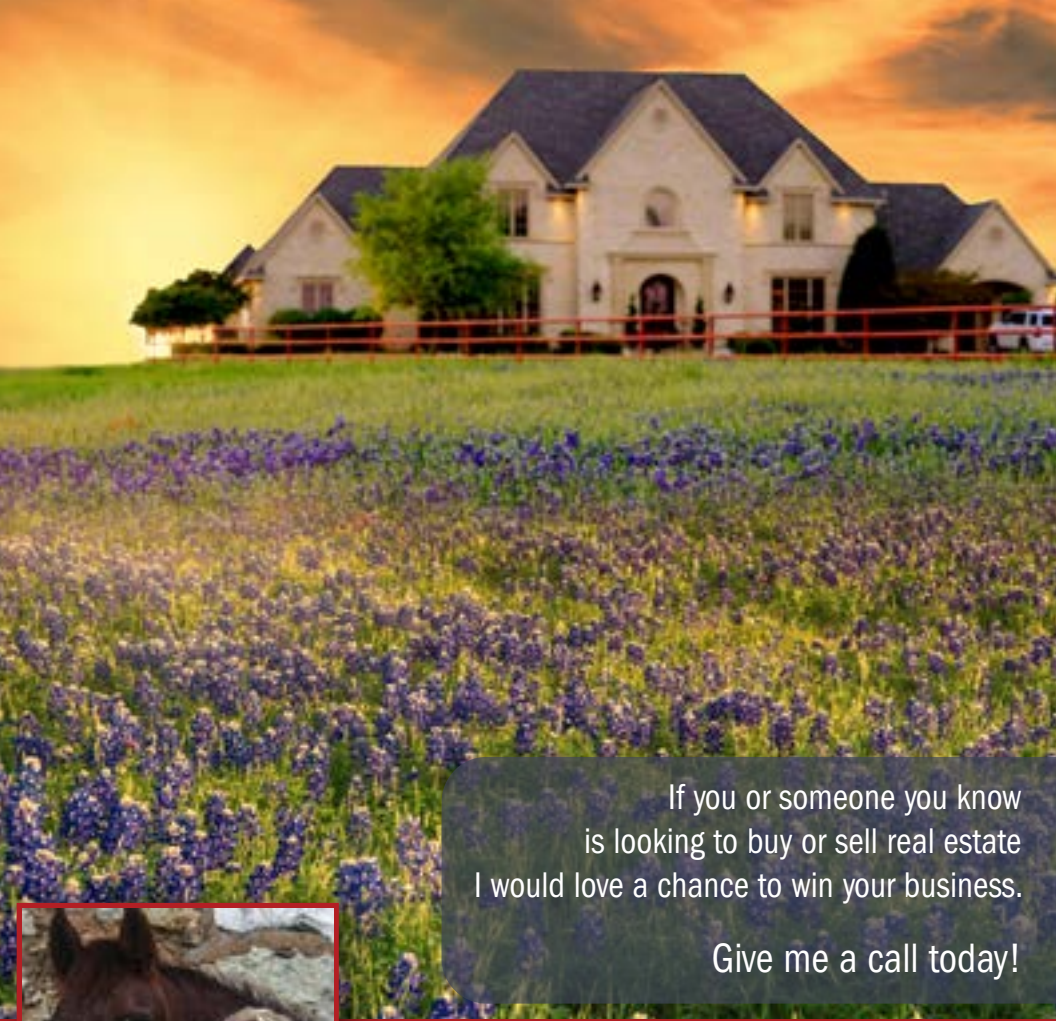
Metro 817-648-7770

[www.cleburnedentistry.com](http://www.cleburnedentistry.com)



**LOVE YOUR SMILE FOR A LIFETIME**





If you or someone you know  
is looking to buy or sell real estate  
I would love a chance to win your business.

Give me a call today!



# Angela Goulding

*Service and Experience with Heart  
Deep in the Heart of Texas*

## 817-863-6811

605 N. Nolan River Rd., Ste. F  
Cleburne, TX 76033

[angelakw33@gmail.com](mailto:angelakw33@gmail.com)

**kw**  
KELLERWILLIAMS

Equal Housing Opportunity Logo



a **neighborly** company

Painting your home is the easiest way to update the style to fit your personal preference. Call the professionals at Five Star Painting® to see what's possible with paint! **CALL NOW FOR A FREE ESTIMATE.**

## SERVICES OFFERED

- Interior & Exterior Painting
- Wallpaper & Popcorn Ceiling Removal
- Cabinet Paint & Stain
- Fence, Patio, and Deck Refinishing
- Light Carpentry

**FREE PAINT! PAY ONLY FOR LABOR!**

NOT VALID WITH ANY OTHER OFFERS. VALID ONLY AT PARTICIPATING LOCATIONS. EXPIRES 12/31/2019.

**682-316-1969 | FiveStarPainting.com**

INDEPENDENTLY OWNED AND OPERATED FRANCHISE

# PLAZA *Academy*

# Fine Arts & Dance Studio

221 S. Mill St. | Cleburne, TX 76033 | (817) 202-0600



## **Ballet, Tap, Drama Music Theatre, Voice**

The Semester runs for 14 weeks and culminates in a performance in April

Tuition for most classes \$175 per semester

*Payment plans are available.*

**Many different classes to choose from!**

*Dance.*  
**Sing.**  
*Act.*  
**INSPIRE...**

Classes in ballet, tap, drama, music theatre, vocal performance and more.

Visit our website for class descriptions, dates and times.  
go to [plaza-academy.com](http://plaza-academy.com) for more information

# Hear's Hope

88.3 *The Journey*  
Radio for the Walk of Life

Hope wherever you are,  
at 88.3 FM, through the  
Journey® app for iOS or Android,  
our Alexa skill or online at  
[www.883thejourney.org](http://www.883thejourney.org)

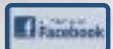
**Fixing your problems since way back!!!**



- Residential
- Industrial
- Phone
- Commercial
- Oil Field!
- Data

**(817) 774-9473**

EMERGENCY  
SERVICE  
24/7



TECL 27539



# VICTORY

## INVESTMENT STRATEGIES

817-645-6800 • [matt.victory@lpl.com](mailto:matt.victory@lpl.com)  
[victoryinvestmentstrategies.com](http://victoryinvestmentstrategies.com)



**Michael Victory**  
LPL Registered Representative  
Investment Consultant



**Matt Victory**  
LPL Registered Representative  
Investment Consultant

Retirement Planning • Traditional & Roth IRAs  
401k & 403b Rollover Services • SEP & Simple IRAs  
Income Investments • Growth Investments  
Stocks • Bonds • Mutual Funds • ETFs • REITs  
Fixed/Index/Variable Annuities • Tax-Sheltered Investments

*Securities offered through*  
**LPL Financial**  
Member FINRA/SIPC

**501 N. Nolan River Road**  
**Cleburne, TX 76033**