



Service Platform and Stiffener Installation

2 and 3 Module Stack Dryer Models

Installation Manual

PNEG-349

Version: 2.2

Date: 09-**26-20**



PNEG-349

All information, illustrations, photos and specifications in this manual are based on the latest information available at the time of publication. The right is reserved to make changes at any time without notice.

Contents

| | |
|--|-----------|
| Chapter 1 Safety | 4 |
| Safety Guidelines | 4 |
| Cautionary Symbols Definitions | 5 |
| Safety Cautions | 6 |
| Safety Sign-Off Sheet | 9 |
| Chapter 2 Service Platform Installation | 10 |
| Platform Support Channels | 11 |
| Floor Support Angles | 15 |
| Inner Guard Rail | 17 |
| Outer Guard Rail Supports | 18 |
| Platform Toe Board Angle and Flooring | 18 |
| Platform Guard Rails | 22 |
| Access Door | 23 |
| Chapter 3 Stiffener Installation | 25 |
| Stiffener Basket Location | 26 |
| Stiffener Exploded View | 27 |
| Stiffener Assembly | 28 |
| Special Buttress Assembly | 29 |
| Chapter 4 Parts List | 30 |
| Service Platform Parts | 30 |
| Chapter 5 Warranty | 33 |

Safety Guidelines

Safety guidelines are general-to-specific safety rules that must be followed at all times. This manual is written to help you understand safe operating procedures and problems that can be encountered by the operator and other personnel when using this equipment. Save these safety guidelines for future reference.

As owner or operator, you are responsible for understanding the requirements, hazards, and precautions that exist and to inform others as required. Unqualified persons must stay out of the work area at all times.

Alterations must not be made to the equipment. Alterations can produce dangerous situations resulting in **SERIOUS INJURY or DEATH**.

This equipment must be installed in accordance with the current installation codes and applicable regulations, which must be carefully followed in all cases. Authorities having jurisdiction must be consulted before installations are made.

When necessary, you must consider the installation location relative to electrical, fuel and water utilities.

Personnel operating or working around equipment must read this manual. This manual must be delivered with equipment to its owner. Failure to read this manual and its safety instructions is a misuse of the equipment.

ST-0001-3

Cautionary Symbols Definitions

Cautionary symbols appear in this manual and on product decals. The symbols alert the user of potential safety hazards, prohibited activities and mandatory actions. To help you recognize this information, we use the symbols that are defined below.



This symbol indicates an imminently hazardous situation which, if not avoided, **will result in serious injury or death.**



This symbol indicates a potentially hazardous situation which, if not avoided, **can result in serious injury or death.**



This symbol indicates a potentially hazardous situation which, if not avoided, **can result in minor or moderate injury.**



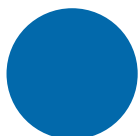
This symbol is used to address practices not related to personal injury.



This symbol indicates a general hazard.



This symbol indicates a prohibited activity.



This symbol indicates a mandatory action.

ST-0005-2

Safety Cautions

Use Personal Protective Equipment

- Use appropriate personal protective equipment:

Eye Protection



Respiratory Protection



Foot Protection



Hearing Protection



Head Protection



Fall Protection



Hand Protection



- Wear clothing appropriate to the job.
- Remove all jewelry.
- Tie long hair up and back.

ST-0004-1

Follow Safety Instructions

- Warning:** If the information in the manual is not followed exactly, a fire or explosion can result, causing property damage, personal injury or loss of life.
- Carefully read all safety messages in this manual and safety signs on your machine. Keep signs in good condition. Replace missing or damaged safety signs. Be sure new equipment components and repair parts include the current safety signs. Replacement safety signs are available from the manufacturer.
- Learn how to operate the machine and how to use controls properly. Do not let anyone operate without instruction.
- If you do not understand any part of this manual or need assistance, contact your dealer.
- Retain these instructions for future reference.



ST-0025-3

Maintain Equipment and Work Area

- Understand service procedures before doing work. Keep area clean and dry.
- Never service equipment while it is operating. Keep hands, feet, and clothing away from moving parts
- Keep your equipment in proper working condition. Replace worn or broken parts immediately.



ST-0003-1

Fall Hazard

- Keep access door closed while on a platform to avoid falls.
- Always use proper personal protective equipment and proper clothing when using equipment. Failure to follow safety precautions can result in severe injury or death.



ST-0042-2

Platform Load Limit

- The platform load limit is 500 LBS (2.25 kN). Do not exceed this weight.
- Excessive load will damage the platform and cause platform to fall. Severe injury or death will result.



ST-0044-2

Stay Clear of Hoisted Equipment

- Always use proper lifting or hoisting equipment when assembling or disassembling equipment.
- Do not walk or stand under hoisted equipment.
- Always use sturdy and stable supports when needed for installation. Not following these safety precautions creates the risk of falling equipment, which can crush personnel and cause serious injury or death.



ST-0047-1

1. Safety

Sharp Edge Hazard

- This product has sharp edges, which can cause serious injury.
- To avoid injury, handle sharp edges with caution and always use proper protective clothing and equipment.



ST-0036-2

Fall Hazard

- Ladders, stairways and platforms are for use by competent and trained personnel only. Do not allow children or other unauthorized persons to have access to the equipment.
- Access to the equipment must be restricted by the use of security fencing and lockable gates.
- Lower sections of ladders must be fitted with a lockable safety gate to prevent unauthorized access.
- Make sure that hot surfaces have had adequate time to cool before working on or in the equipment.
- Lock out and tag out power supplies and fuel supplies to all equipment.
- Do not attach lifting equipment to ladders or platforms.
- Do not go outside of the safety rails provided on elevated platforms.
- Do not work at heights during high winds, rain, snow, or ice storms.



ST-0056-1

Safety Sign-Off Sheet

Below is a sign-off sheet that can be used to verify that all personnel have read and understood the safety instructions. This sign-off sheet is provided for your convenience and personal record keeping.

[illegible]

ST-0007



Figure 2A

Platform Support Channels

Airstream service platform units are designed for use with Airstream two and three module grain dryers. The two (2) module models require a service platform on the upper module and the three module units use a platform on both the upper and center modules.

For ease of assembly, the platform should be fully installed before the module is lifted and installed.

Install the platform support channels and related parts within the platform package number one as follows:

1. If required, connect a platform attachment bracket (D61-0054) onto each side of the dryer as shown in [Figure 2B](#) and [Figure 2C](#), using the existing large bolts through the round set of bracket holes.

Loosely connect the two (2) rear anchor channels (D61-0055) to the platform attachment brackets using 3/8" x 1" bolts with washers.

2. Remove hitch tongue from the dryer and support the front end of the dryer under the frame side rails.

Loosely connect the main support channel (D01-2033) to the front end of the dryer hitch weldment. Use four (4) 1/2" x 1-1/2" bolts with washers on slotted side. The channel side with the large round holes must be up.



Figure 2B Connecting Rear Anchor Channels



Figure 2C Mounting the Main Support Channel

Platform Support Channels (Continued)

3. Attach the reinforcement plate (D61-0056) to the main floor support channel using 5/16" x 3/4" whiz bolts. *(See Figure 2D.)*
4. Position the left hand side channel (D61-0058) and the right hand side channel (D61-0057), so the sides with the dimpled holes are up. Connect them to the rear anchor channels and the main support channel. Use the special 5/16" diameter flathead allen cap screws to secure the top side of the two (2) side channels. Use 5/16" x 3/4" bolts at the bottom side. *(See Figure 2E.)*



Figure 2D Bolting Reinforcement Plate to Main Support Channel



Figure 2E Attaching Side Channels

Platform Support Channels (Continued)

5. Position the rear tie angle (D01-2034) and connect it onto the rear anchor channels using 5/16" x 1" carriage head bolts.
6. Position the front channel (D61-0061), so the side with the large holes is up and connect it to the two (2) side channels. Use flat head allen cap screws to secure the top side.



Figure 2F *Placing Rear Tie Angle on Platform*

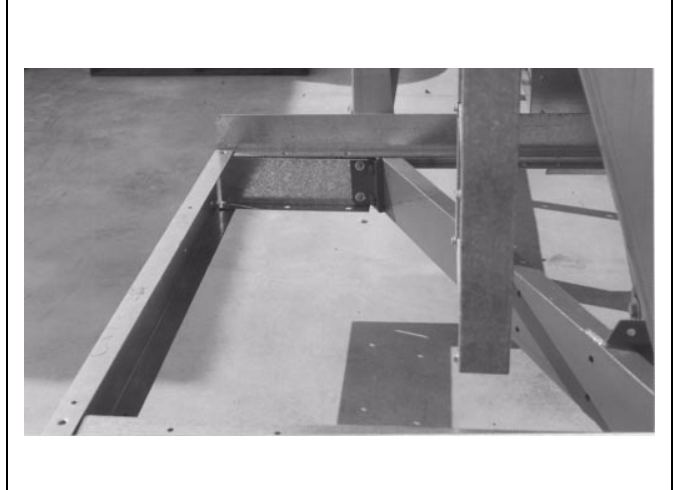


Figure 2H *Close-Up of Rear Portion of Frame*



Figure 2G *Tighten the Rear Frame Tie Angle to the Side Frame*



Figure 2I *Attaching Front Channel*

Platform Support Channels (Continued)

7. Use two (2) flathead allen cap screws and connect the center floor support (D61-0062) to the front and main support channels. (See Figure 2J.)
8. Use a carpenter square and check the squareness of the assembled unit, between the main channel and the side channels. If necessary, shift the position of the main channel slightly, using the slotted attaching holes, until the unit is properly squared. Then fully tighten all channel bolts. (See Figure 2K.)



Figure 2J Center Floor Support Placement



Figure 2K Check for Squareness and Tighten Bolts

Floor Support Angles

Install the floor support angles as follows:

1. Use two (2) flathead allen cap screws and connect the long left floor support angle (A) to the rear tie angle (K) and inside ladder standoff (D).
2. Connect the short left floor support angle (E) to the main support channel (L) and inside ladder standoff (D).
3. Connect the rear door support angle (B) and frame between the long left floor support angle (A) and the left side channel (J). It is to be assembled to the top of both and resting on the hitch channel.
4. Install the front door support angle (C) to the main support channel (L) using 3/8" x 1" bolts and to the short left floor support angle (E) using 5/16" x 1" bolt.
5. The front door support angle (C) is bolted to the side of the main support channel (L) and under the short left floor support angle (E).

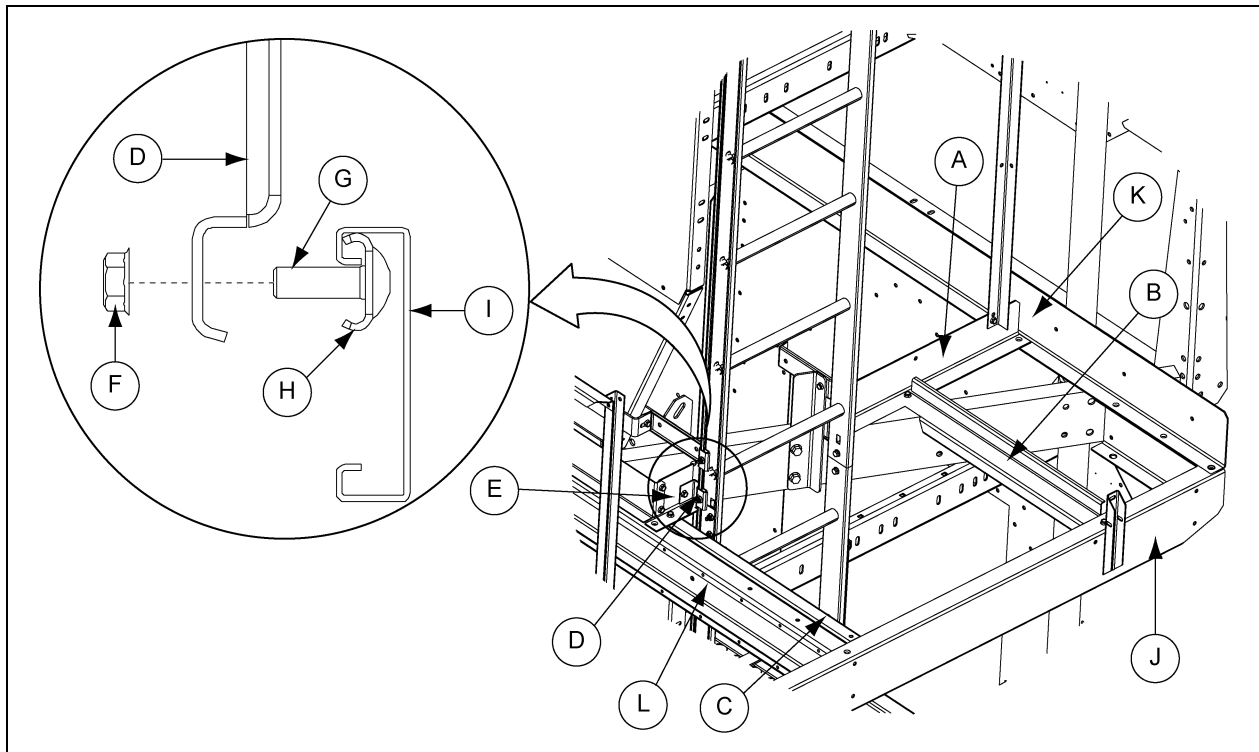
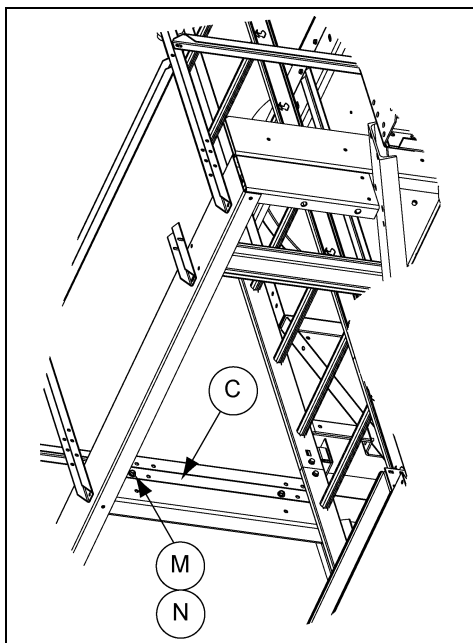


Figure 2L Installing Support Angles

| Ref # | Part # | Description |
|-------|----------|--------------------------------|
| A | D01-3037 | Long Left Floor Support Angle |
| B | D01-2037 | Rear Door Support Angle |
| C | D01-3039 | Front Door Support Angle |
| D | LDR-4200 | Inside Ladder Standoff |
| E | D01-3040 | Short Left Floor Support Angle |
| F | S-10268 | Flange Nut 5/16"-18 JS Grade 5 |

| Ref # | Part # | Description |
|-------|----------|--|
| G | S-3550 | Carriage Bolt 5/16"-18 x 1" ZN Grade 5 |
| H | LDR-4198 | Ladder Standoff Wedge |
| I | | Ladder Sections |
| J | | Left Side Channel |
| K | | Rear Tie Angle |
| L | | Main Support Channel |

Floor Support Angles (Continued)



| Ref # | Part # | Description |
|-------|----------|---|
| C | D01-3039 | Front Door Support Angle |
| M | S-7485 | Flange Bolt 3/8"-16 x 1" JS500 Grade 8 or 8.2 |
| N | S-7489 | Hex Nut 3/8"-16 JS500 grade 5 |

Figure 2M Viewed from below Platform

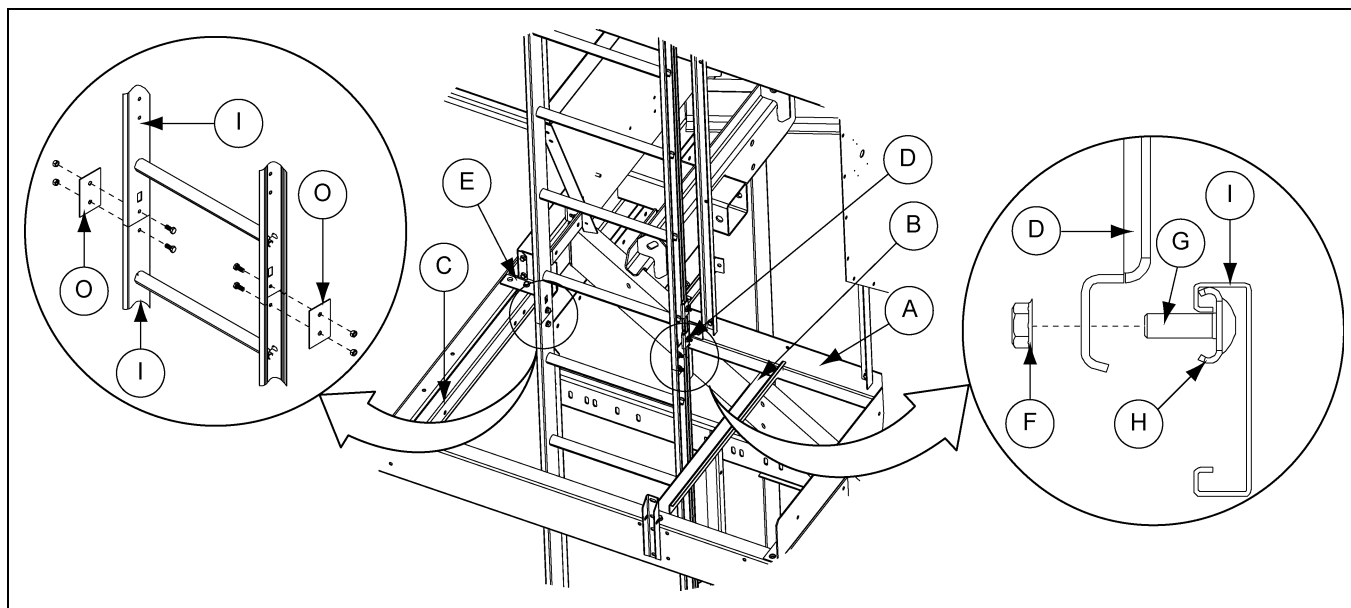


Figure 2N Ladder Connections

| Ref # | Part # | Description |
|-------|----------|--------------------------------|
| A | D01-3037 | Long Floor Support Left |
| B | D01-2037 | Rear Door Support Angle |
| C | D01-3039 | Front Door Support Angle |
| D | LDR-4200 | Inside Ladder Standoff |
| E | D01-3040 | Short Left Floor Support Angle |

| Ref # | Part # | Description |
|-------|----------|--|
| F | S-10268 | Flange Nut 5/16"-18 JS Grade 5 |
| G | S-3550 | Carriage Bolt 5/16"-18 x 1" ZN Grade 5 |
| H | LDR-4198 | Ladder Standoff Wedge |
| I | | Ladder Sections |
| O | LDR-4317 | Splice Plate (Two (2) per Connection) |

Inner Guard Rail

Install the inner guard rail supports and related parts within platform package number two (2) as follows:

1. Connect the right inside back post angle (D) and the right inner middle post angle (A) to the long left floor support (E) using 5/16" x 3/4" bolts.
2. Connect the right inside guard rail (C) between the right inner middle post angle (A) and the inside back post angle (D) using 5/16" x 3/4" bolts.
3. Fasten two (2) back guard rails (B) between the post angles (D and F) using 5/16" x 3/4" bolts.
(See Figure 20.)

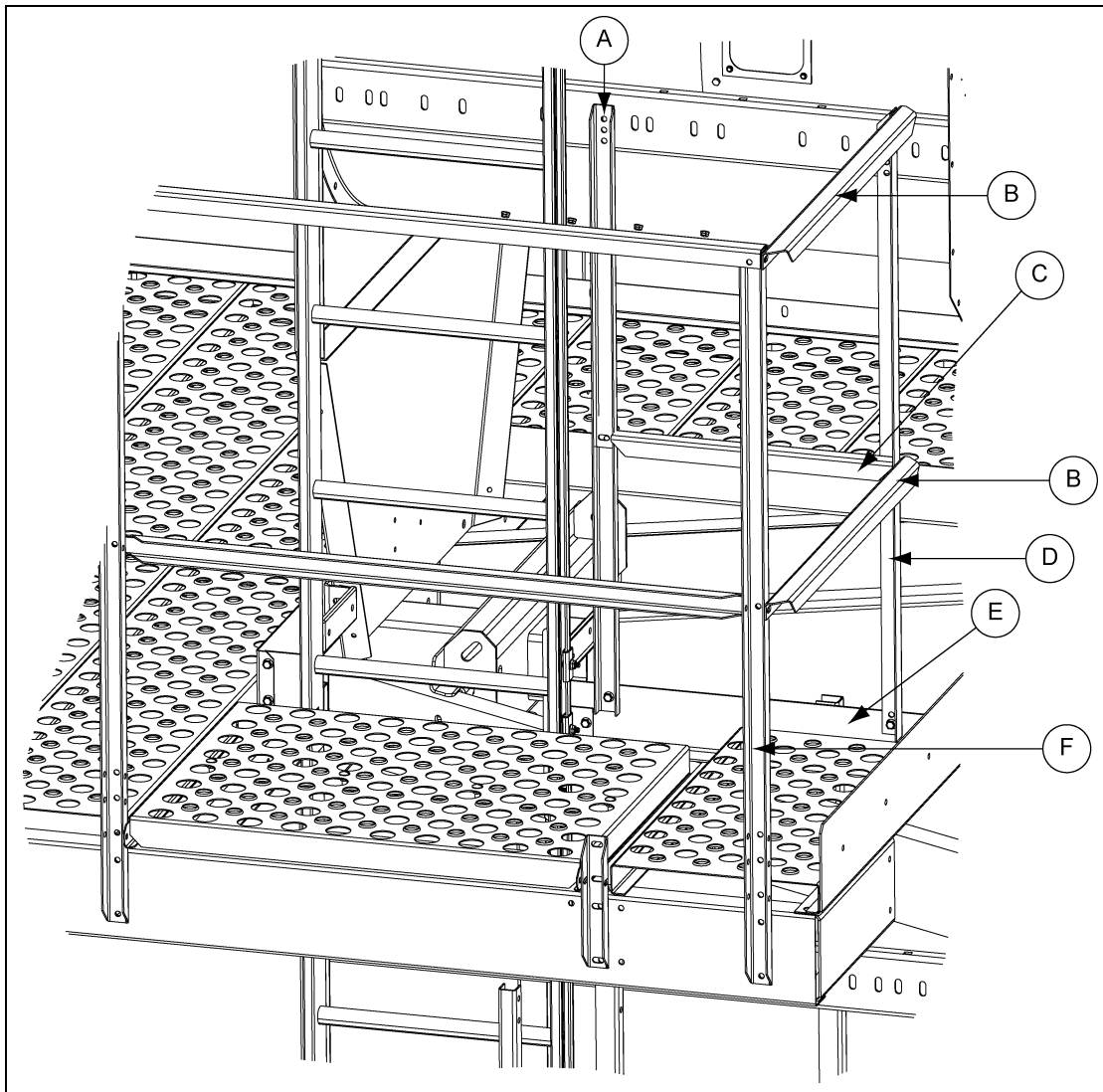


Figure 20 Location of Inner Guard Rail Support Angles

| Ref # | Part # | Description |
|-------|----------|-------------------------------|
| A | D01-2050 | Right Inner Middle Post Angle |
| B | D01-2043 | Back Guard Rail |
| C | D01-3038 | Right Inside Guard Rail |

| Ref # | Part # | Description |
|-------|----------|----------------------------------|
| D | D01-2041 | Right Inside Back Post Angle |
| E | D01-3037 | Long Left Floor Support |
| F | D61-0037 | Outer Guard Rail Support Channel |

Outer Guard Rail Supports

Install outer guard rail support channels, door hinge channel and floor panels contained within platform package number 2 and number 3 as follows:

1. Use 5/16" x 3/4" bolts and loosely connect the seven (7) guard rail support channels (D61-0037) to the platform support channels.
2. Connect the outer door hinge channel (D61-0066) using 5/16" x 3/4" bolts. (*See Figure 2P.*)



Figure 2P *Install Remaining Support Channels*

Platform Toe Board Angle and Flooring

Use 5/16" x 3/4" bolts and install the platform floor toe board angles. When two (2) toe boards are listed, the bottom toe board must be positioned to capture the floor panels. The additional upper toe board acts as a narrow foot rail to provide added safety protection. When connecting upper toe boards, install bolts so the head ends are located within the platform. The long flanges of the toe boards point up.



Figure 2Q *Connecting Outer Front Toe Board to Guard Rail Support Channels*



Figure 2R *Connecting Left Hand Front Toe Board to Guard Rail Support Channel*

Platform Toe Board Angle and Flooring (Continued)

1. Connect one left hand outer rear toe board.
2. Connect the left hand inner rear toe board.
3. Connect one left hand front toe board.
4. Connect one right hand outer toe board.
5. Connect one outer front toe board.



Figure 2S *Installing Four (4) Short Floor Panels*



Figure 2T *Installing Center Long Floor Panels*

6. Connect the right hand inner toe board.
7. Place the short wide floor panels on the left hand side of the platform at the rear.

Platform Toe Board Angle and Flooring (Continued)

8. Place the four (4) short floor panels on the right hand side at the rear.
9. Place the three (3) long floor panels across the front end of the platform.
10. Connect the remaining toe boards around the platform.



Figure 2U *Installing Front Long Floor Panel*



Figure 2V *Installing the Remaining Toe Boards*

Platform Toe Board Angle and Flooring (Continued)



Figure 2W *Installation of the short wide floor panel, left hand outer rear toe boards and hinge channel.*

2. Service Platform Installation

Platform Guard Rails

Use 5/16" x 3/4" bolts and install platform guard rails within platform package number 4. Guard rails should be installed so that the smooth rail surfaces and bolt heads are within the compartment to provide maximum body protection from corners and angle edges.

1. Connect the upper side guard rail onto each side.
2. Connect the upper front guard rail.
3. Connect two (2) rear guard rails onto each rear side of platform.
4. Connect two (2) lower front guard rails.
5. Connect the lower front side guard rail and the lower rear side guard rail onto each side platform. Connect the access door clip on the left side of the platform.
6. Fully tighten all guard rail bolts, including the seven (7) guard rail support channels not tightened earlier.



Figure 2X *Installing Front and Side Upper Guard Rails*



Figure 2Y *Installing Lower Side Guard Rails*



Figure 2Z *Installing Lower Rear Guard Rail*

Access Door

Install the platform access door and related parts as follows:

1. Install access door in place with the hinge ends located outward.
2. Use two (2) 3/8" x 1-1/2" bolts as hinge pins and install them with the heads positioned inward.
3. Secure each hinge pin in place by installing nuts on each side of the outer channel leg. Adjust the position of the hinge pins, as necessary, to center the door properly. Tighten nuts securely to lock pins in place.

Inspect the completed service platform unit. Make sure all parts are properly installed and fully tightened.



Figure 2AA *Installing Access Door*



Figure 2AC *Close-Up of Access Door Clip on Guard Rail*



Figure 2AB *Make sure door opens freely and lies on frame angles.*



Figure 2AD *Check to make sure every bolt is tight and door opens freely.*



Figure 2AE *Finished Platform on an Airstream Upper Module*

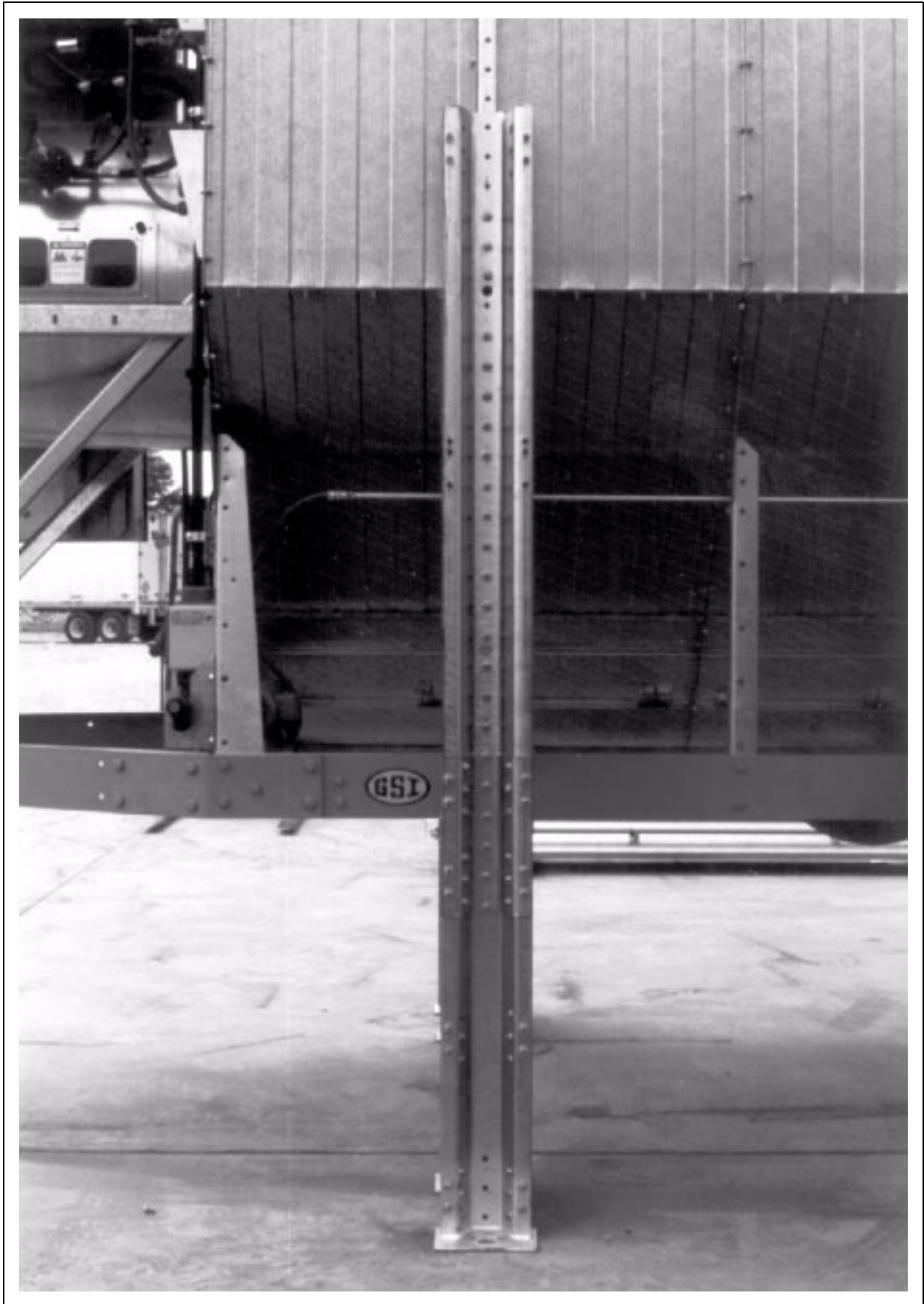


Figure 3A

3. Stiffener Installation

Stiffener Basket Location

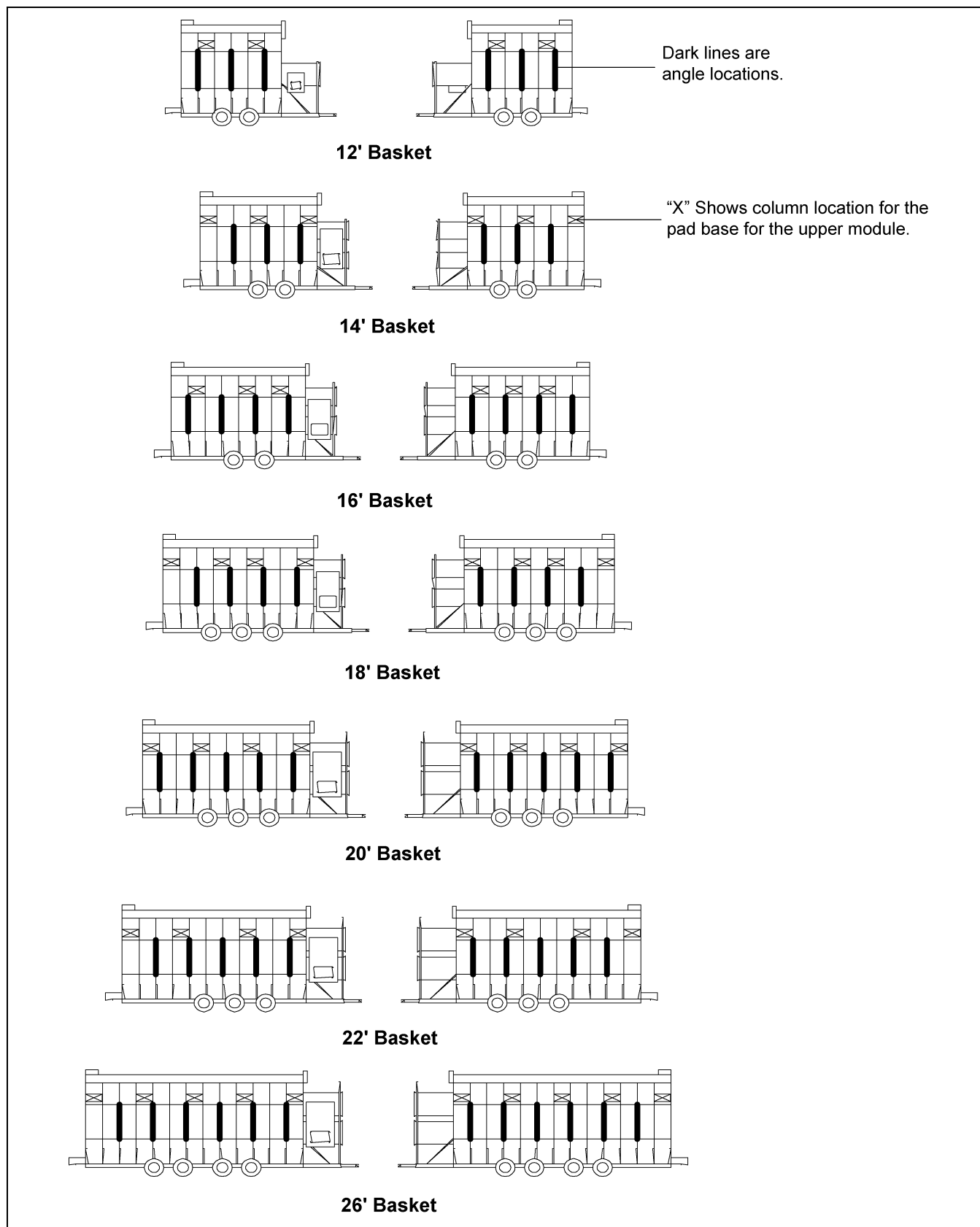


Figure 3B Location of Stiffener Angles on Basket Based on Length

Stiffener Exploded View

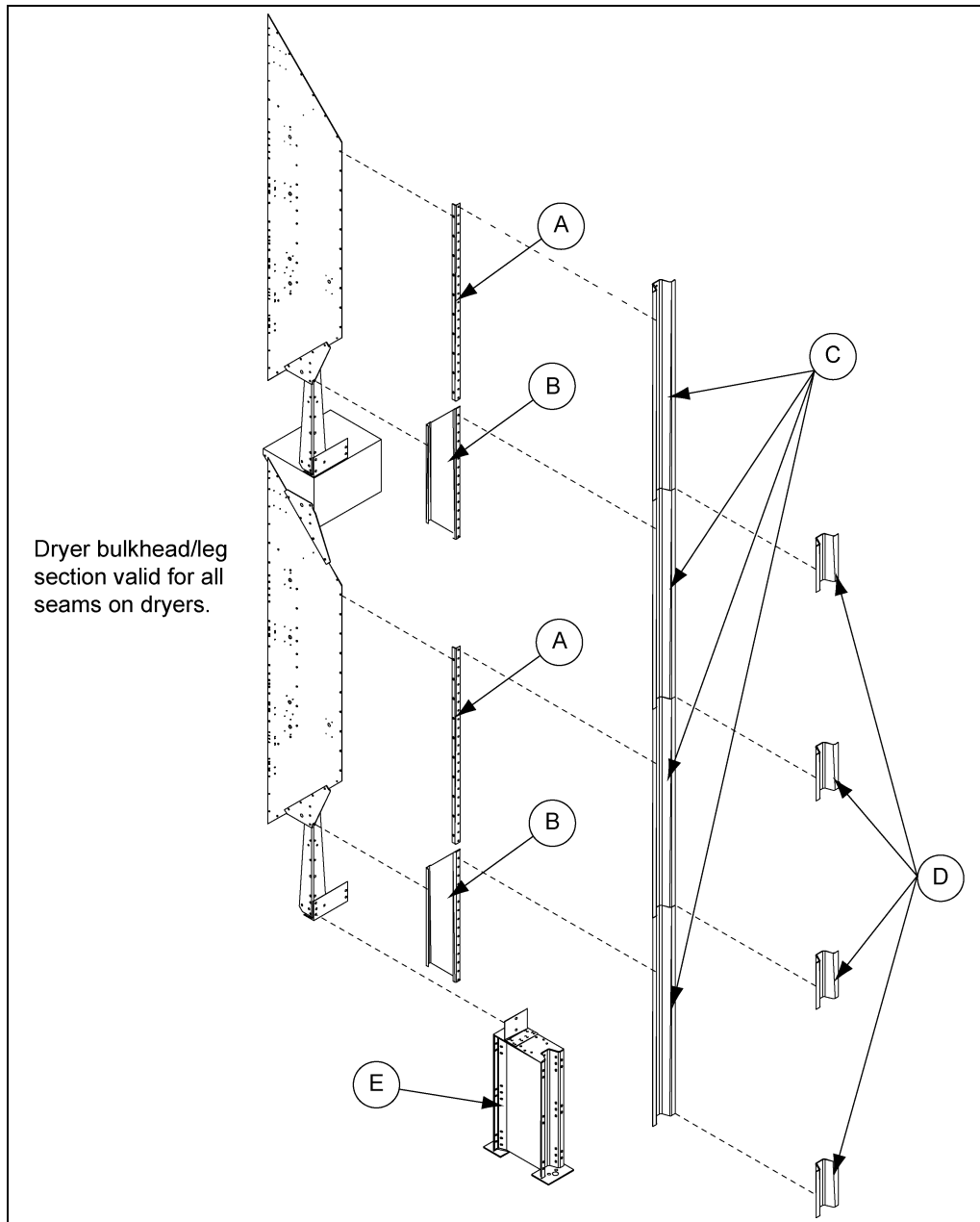


Figure 3C Exploded View of Stiffener

| Ref # | Part # | Description |
|-------|----------------------|--|
| A | D01-0872 | Stiffener Attach Angle Part Redesigned (R..H and L.H) |
| B | D01-0877 | Stiffener Module Leg Channel |
| C | SS-6923 | Stiffener |
| D | SS-7053 | Splice N.S. 8 Gauge |
| E | D01-1100 D01-1104 | Stiffener 36" Base Assembly Stiffener 18" Base Assembly |

3. Stiffener Installation

Stiffener Assembly

General

This is a guide for assembling and mounting the new Stack Dryer stiffener package to the Airstream Stack Series grain dryers. It contains exploded diagrams and text explaining the basic assembly. Please study this carefully before beginning the assembly and use it as a reference guide.

Stiffener Attach Angles

The left hand attach angle (D01-0873) and right hand attach angle (D01-0874) are installed at the factory during basket assembly. A comparison should be made with the dryer to be installed and [Figure 3B on Page 26](#) to make sure the angles are installed in the correct position. A check should be made to see if the Attach Angle points in the same direction as the dryer leg directly below it. If the Attach Angles are in the wrong location or point in the wrong direction, the Attach Angles should be moved before proceeding with the assembly.

Base Module Connector Clip

The base module connector clip should be attached to the Base Module of the dryer before setting the dryer into place. The connector clip attaches at the same place the gusset support leg attaches to the frame rail of the dryer. One at a time, unbolt the gusset support leg and bolt the connector clip to the outside of the Frame Rail.

Stack Stiffener Leg Channel

The next step in assembling the stack stiffener package should be the attachment of the stack stiffener leg channel (D01-0877). The leg channel attaches to the dryer gusset support leg below the stiffener attach angle on the dryer basket. ([See Figure 2A on Page 10.](#)) This should be done for each module at this time.

Stack Stiffener Base Unit

The stack stiffener base unit is assembled at the factory. This component assembly should be set into place in the locations specified in the Stack Dryer concrete specification drawings.

Base Unit Hardware

The connection of the stack stiffener base unit to the stack base module is completed using the following hardware in the hardware package.

| Ref # | Part # | Description | Qty |
|-------|--------|---|-----|
| 1 | S-248 | Flat Washer 3/8" 7/16" I.D. 1" O.D. YDP | 12 |
| 2 | S-456 | Hex Nut 3/8"-16 YDP Grade 5 | 6 |
| 3 | S-7488 | Flange Bolt 3/8"-16 x 1-1/2" JS500 Grade 8 or 8.2 | 6 |

Stack Stiffener Installation

With the stiffener base unit in place and all other preparations finished, the stack stiffeners should be attached to the dryer modules. Starting with the base module of the dryer, the first stiffener should be attached so that the bottom of the stiffener is even with the frame. The top three (3) holes should be left open for later attachment of a stiffener splice. The second stiffener can be attached to the stiffener angle on the basket above the first with approximately 19-1/4" above the attach angle. The bottom three holes should be left open for the splice. The stiffeners can now be spliced together using the stiffener splice (SS-7053). The base module is now ready to be set into place on the stiffener base units. Once the base module is in place, the connector clip should be bolted to the base unit. A stiffener splice should be bolted on to connect the stiffener to the base unit. Assembly is shown in [Figure 3D on Page 29](#).

Special Buttress Assembly

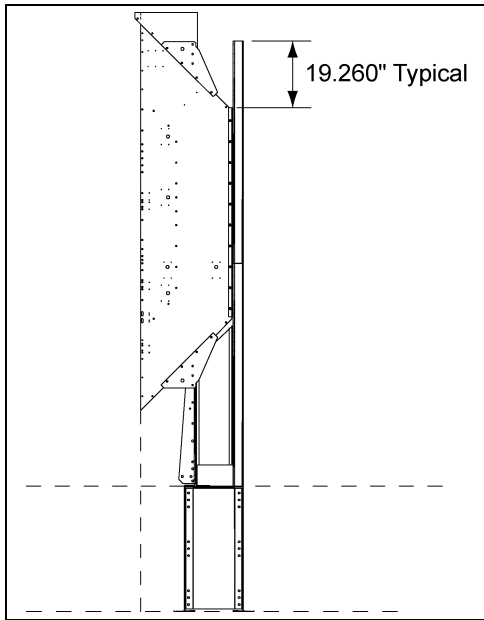


Figure 3D Base Module Stiffener Assembly

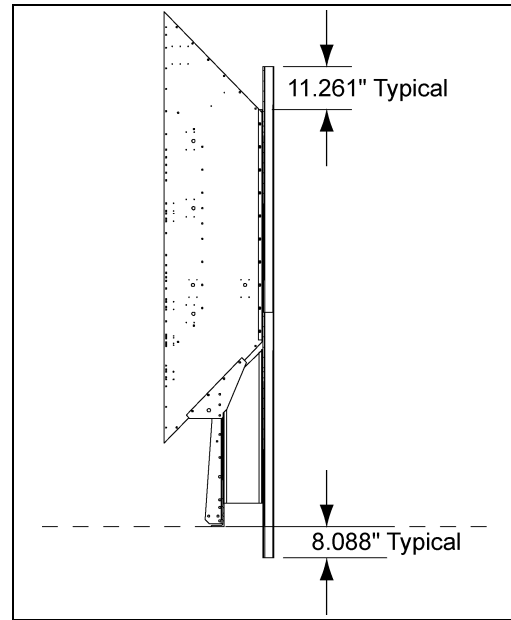


Figure 3E Second Module Stiffener Assembly

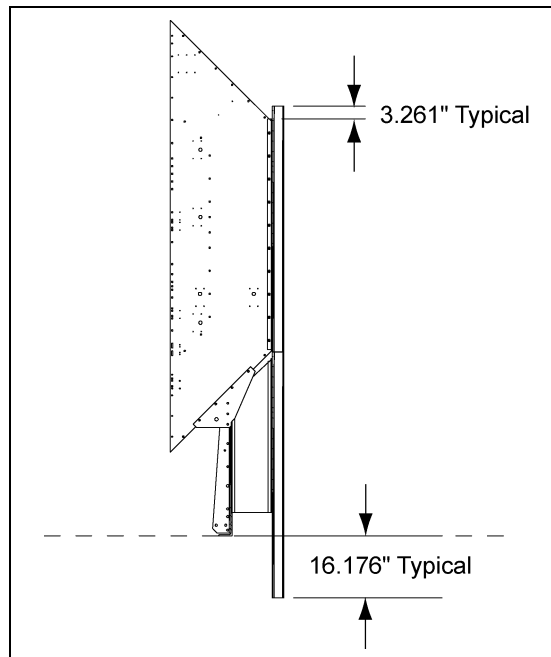
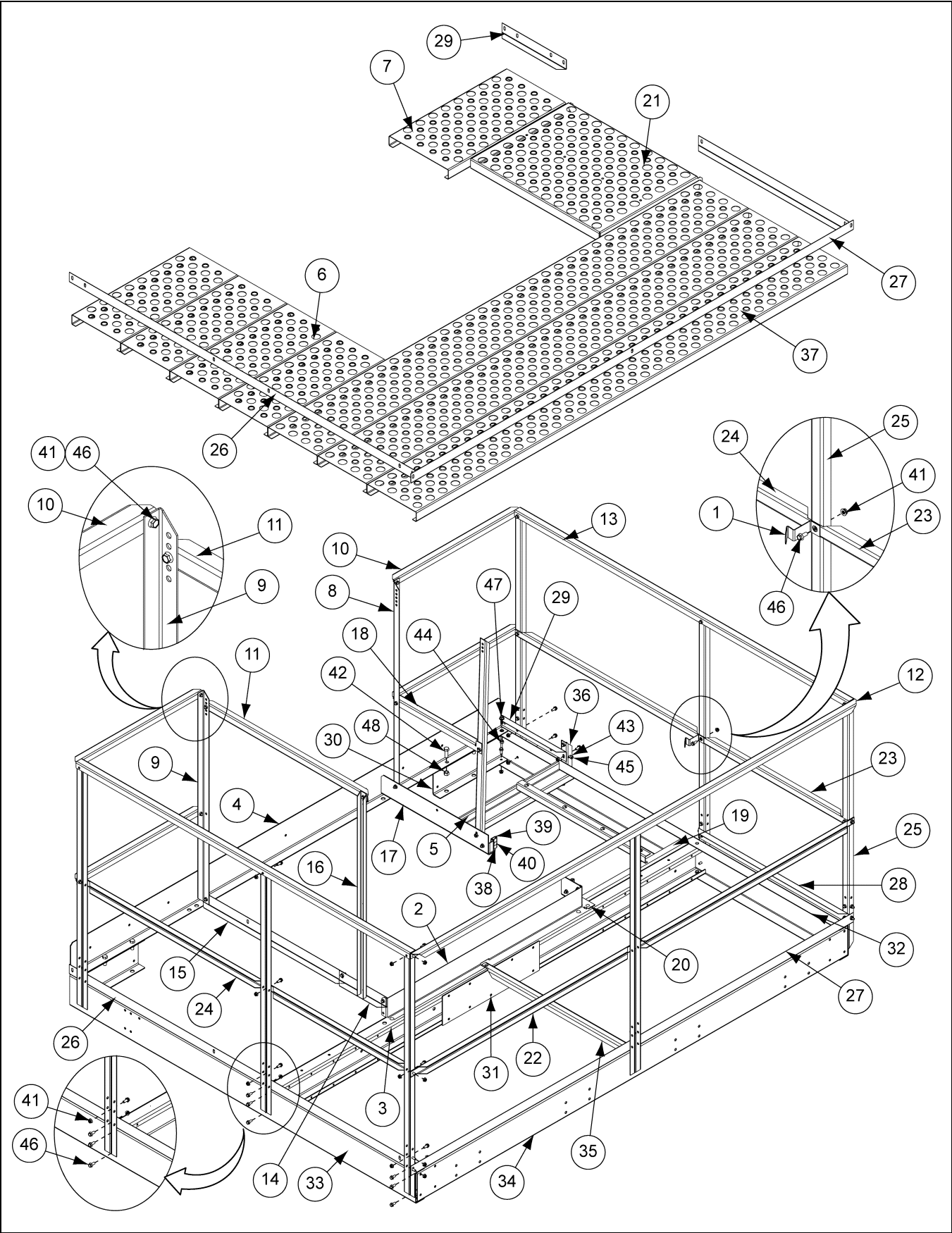


Figure 3F Third Module Stiffener Assembly

The second and third module stiffeners are assembled the same way as the base module with only minor variations. For the second module approximately 8.088" of stiffener should be left below the frame of the module. Approximately 11.261" should be left above the attach angle at the top. The splice should be bolted as on the first module. (See Figure 3E.) For the third module approximately 16.176" of stiffener should be left below the frame of the module. Approximately 3.261" should be left above the attach angle at the top. Splice the stiffener as before. (See Figure 3F.)

Splices should be used to connect the stiffeners as the dryer modules are stacked. All bolts should be checked and made tight to complete the installation.

Service Platform Parts



Service Platform Parts List

| Ref # | Part # | Description | Qty |
|-------|--------------|--|-----|
| 1 | D01-1496 | Hardware Box Service Platform | 1 |
| 2 | D01-2028 | Inner Front Toe Board | 1 |
| 3 | D01-2033 | Main Support Channel | 1 |
| 4 | D01-2034 | Rear Angle Tie | 1 |
| 5 | D01-2037 | Rear Door Support Angle | 1 |
| 6 | D01-2038 | Right Hand Rear Floor Panel | 4 |
| 7 | D01-2039 | Left Hand Rear Floor Panels | 1 |
| 8 | D01-2041 | Right Hand Inner Guard Rail Support Angle | 1 |
| 9 | D01-2042 | Left Hand Inner Guard Rail Support Angle | 1 |
| 10 | D01-2043 | Rear Guard Rail | 4 |
| 11 | D01-2044 | Left Inside Guard Rail | 1 |
| 12 | D01-2046 | Upper Front Guard Rail | 1 |
| 13 | D01-2047 | Upper Side Guard Rail | 2 |
| 14 | D01-2048 | Right Hand Inner Rear Toe Board | 1 |
| 15 | D01-2049 | Left Hand Inner Rear Toe Board | 1 |
| 16 | D01-2050 | Right Hand Inner Middle Guard Rail Support Angle | 2 |
| 17 | D01-3037 | Left Hand Floor Support Angle | 1 |
| 18 | D01-3038 | Right Inside Guard Rail | 1 |
| 19 | D01-3039 | Front Door Support Angle | 1 |
| 20 | D01-3040 | Front Left Hand Support Angle | 1 |
| 21 | D01-0581-ASY | Platform Access Door Assembly | 1 |
| 22 | D61-0032 | Lower Front Side Guard Rail (53-1/16" Long) | 2 |
| 23 | D61-0033 | Lower Front Side Guard Rail | 2 |
| 24 | D61-0034 | Lower Rear Side Guard Rail | 2 |
| 25 | D61-0037 | Outer Guard Rail Support Channel | 7 |
| 26 | D61-0042 | Right Hand Outer Toe Board (82-1/8" Long) | 2 |
| 27 | D61-0043 | Outer Front Toe Board (105" Long) | 2 |
| 28 | D61-0044 | Left Hand Front Toe Board (35-9/16" Long) | 2 |
| 29 | D61-0045 | Left Hand Outer Rear Toe Board (15-1/4" Long) | 2 |
| 30 | D61-0055 | Rear Anchor Channel | 2 |
| 31 | D61-0056 | Reinforcement Plate | 1 |
| 32 | D61-0057 | Right Hand Side Channel (82" Long) | 1 |
| 33 | D61-0058 | Left Hand Side Channel (82" Long) | 1 |
| 34 | D61-0061 | Front Channel (102" Long) | 1 |
| 35 | D61-0062 | Center Floor Support (35-1/8" Long) | 1 |
| 36 | D61-0066 | Outer Door Hinge Channel (9" Long) | 1 |
| 37 | D61-0069 | Floor Panel (102-1/4" Long) | 3 |
| 38 | LDR-4198 | Ladder Standoff Wedge | 2 |
| 39 | LDR-4200 | Inside Ladder Standoff | 2 |
| 40 | S-3550 | Carriage Bolt 5/16"-18 x 1" ZN Grade 5 | 2 |
| 41 | S-3611 | Flange Nuts 5/16"-18 YDP Grade 2 | 82 |
| 42 | S-3728 | Bolt, HHTB 1/2"-13 x 1-1/2" YDP Grade 8 or 8.2 | 4 |
| 43 | S-4275 | Bolt, HHCS 5/16"-18 x 3/4" ZN Grade 5 | 2 |
| 44 | S-4663 | Stover Nut 3/8"-16 ZN Grade 2 | 1 |
| 45 | S-5220 | Hex Lock Nut, 5/16" | 2 |
| 46 | S-6606 | Flange Bolt 5/16"-18 x 3/4" ZN Clear Grade 5 | 81 |
| 47 | S-7485 | Flange Bolt 3/8"-16 x 1" JS500 Grade 8 or 8.2 | 1 |
| 48 | S-8315 | Lock Nut 1/2"-13 ZN Grade C Prevailing Torque | 4 |

NOTES

Limited Warranty — N.A. Grain Products

The GSI Group, LLC. ("GSI") warrants products which it manufactures, to be free of defects in materials and workmanship under normal usage and conditions for a period of 12 months from the date of shipment (or, if shipped by vessel, 14 months from the date of arrival at the port of discharge). If, in GSI's sole judgment, a product is found to have a defect in materials and/or workmanship, GSI will, at its own option and expense, repair or replace the product or refund the purchase price. This Limited Warranty is subject to extension and other terms as set forth below.

Warranty Enhancements: The warranty period for the following products is enhanced as shown below and is in lieu of (and not in addition to) the above stated warranty period. (Warranty Period is from date of shipment.)

| | Product | Warranty Period |
|-------------------|--|-----------------|
| Storage | Grain Bin Structural Design | 5 Years |
| | • Sidewall, roof, doors, platforms and walkarounds • Flooring (when installed using GSI specified floor support system for that floor) • Hopper tanks (BFT, GHT, NCHT, and FCHT) | |
| Conditioning | Dryer Structural Design – (Tower, Portable and TopDry) • Includes (frame, portable dryer screens, ladders, access doors and platforms) | 5 Years |
| | All other Dryer parts including: • Electrical (controls, sensors, switches and internal wiring) | 2 Years |
| | All Non-PTO Driven Centrifugal and Axial Fans | 3 Years |
| | Bullseye Controllers | 2 Years |
| Material Handling | Bucket Elevators Structural Design | 5 Years |
| | Towers Structural Design | 5 Years |
| | Catwalks Structural Design | 5 Years |
| | Accessories (stairs, ladders and platforms) Structural Design | 5 Years |

Conditions and Limitations:

THERE ARE NO WARRANTIES THAT EXTEND BEYOND THE LIMITED WARRANTY DESCRIPTION SET FORTH HEREIN; SPECIFICALLY, GSI DISCLAIMS ANY AND ALL OTHER WARRANTIES OF ANY KIND, EXPRESS OR IMPLIED, INCLUDING, WITHOUT LIMITATION, WARRANTIES OF MERCHANTABILITY OR FITNESS FOR A PARTICULAR PURPOSE OR USE IN CONNECTION WITH: (I) ANY PRODUCT MANUFACTURED OR SOLD BY GSI, OR (II) ANY ADVICE, INSTRUCTION, RECOMMENDATION OR SUGGESTION PROVIDED BY AN AGENT, REPRESENTATIVE OR EMPLOYEE OF GSI REGARDING OR RELATED TO THE CONFIGURATION, INSTALLATION, LAYOUT, SUITABILITY FOR A PARTICULAR PURPOSE, OR DESIGN OF SUCH PRODUCTS.

The sole and exclusive remedy for any claimant is set forth in this Limited Warranty and shall not exceed the amount paid for the product purchased. This Warranty only covers the value of the warranted parts and equipment, and does not cover labor charges for removing or installing defective parts, shipping charges with respect to such parts, any applicable sales or other taxes, or any other charges or expenses not specified in this Warranty. GSI shall not be liable for any other direct, indirect, incidental or consequential damages, including, without limitation, loss of anticipated profits or benefits. Expenses incurred by or on behalf of a claimant without prior written authorization from the GSI warranty department shall not be reimbursed. This warranty is not transferable and applies only to the original end-user. GSI shall have no obligation or responsibility for any representations or warranties made by or on behalf of any dealer, agent or distributor. Prior to installation, the end-user bears all responsibility to comply with federal, state and local codes which apply to the location and installation of the products.

This Limited Warranty extends solely to products sold by GSI and does not cover any parts, components or materials used in conjunction with the product, that are not sold by GSI. GSI assumes no responsibility for claims resulting from construction defects, unauthorized modifications, corrosion or other cosmetic issues caused by storage, application or environmental conditions. Modifications to products not specifically delineated in the manual accompanying the product at initial sale will void all warranties. This Limited Warranty shall not extend to products or parts which have been damaged by negligent use, misuse, alteration, accident or which have been improperly/inadequately maintained.

Notice Procedure:

In order to make a valid warranty claim a written notice of the claim must be submitted, using the RMA form, within 60 days of discovery of a warrantable nonconformance. The RMA form is found on the OneGSI portal.

Service Parts:

GSI warrants, subject to all other conditions described in this Warranty, Service Parts which it manufactures for a period of 12 months from the date of purchase unless specified in Enhancements above.

(Limited Warranty - N.A. Grain Products_ revised 01 October 2020)

This equipment shall be installed in accordance with the current installation codes and applicable regulations, which should be carefully followed in all cases. Authorities having jurisdiction should be consulted before installations are made.



**1004 E. Illinois St.
Assumption, IL 62510-0020
Phone: 1-217-226-4421
Fax: 1-217-226-4420
www.gsiag.com**



GSI is a worldwide brand of AGCO Corporation.