

PO267 OO Scale Town End Cottage

INSTRUCTIONS GLUES

UHU Solvent Free All Purpose Adhesive Glue

Works superbly well in our fine glue applicators. Dries quickly, but allows time for positioning of kit parts as described further on in the instructions.

Also from Deluxe Materials

Speedbond A fast drying PVA.

Roket Card Glue An instant card glue

GETTING STARTED

1 EXTRACTING COMPONENTS FROM THE BASE SHEETS.

To stop the components from falling off the sheets, they are held secure with score lines. These are cuts that only go about 75% of the way through the card.

To release them run the point of your knife along these score lines and they will come seamlessly away. These score lines are marked with blue arrows: **WARNING**, Cut with care using a knife that is not too sharp, this will reduce the risk of the blade running off the score and cutting the components.

2 MAKE YOUR 'BUILDERS YARD'.

As you extract the components from the base sheets they need to be kept away from your working area on a thick piece of card or a tray until needed. Keep the components organised to which part of the building they belong to.

CHECK LIST

This kit should contain the following:

- 3 x PRINTED SHEET. Kit parts.
- 1 x GREY SHEET. Strengtheners parts.
- 1 x SMALL GREY SHEET. Laser cut parts.
- 1 x BROWN SHEET. Laser cut parts.
- 1 x GLAZING SHEET. Windows.
- 1 x INSTRUCTION BOOKLET.
- 1 x RIDGE TILES SHEET.

READ THROUGH ALL THE INSTRUCTIONS BEFORE YOU START.

This is a complex kit that requires particular attention to detail, so proceed with care!

To construct this kit you will need the following:

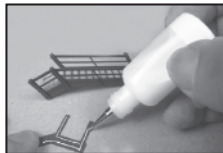
1. A modellers knife.
2. A pair of sharp scissors.
3. A steel ruler.
4. Glue - See glues.
5. Ultra Fine Tip Glue Applicator, see below.
6. A cutting surface - a sheet of card or cutting mat.
7. Fine point tweezers.
8. Water colour paints and a very fine brush for painting edges and corners.

METCALFE Ultra Fine Glue Tip Applicators.

These bottles are essential for gluing the smaller components in this kit.



Tiny strips and spots of glue can be accurately laid down with precision.

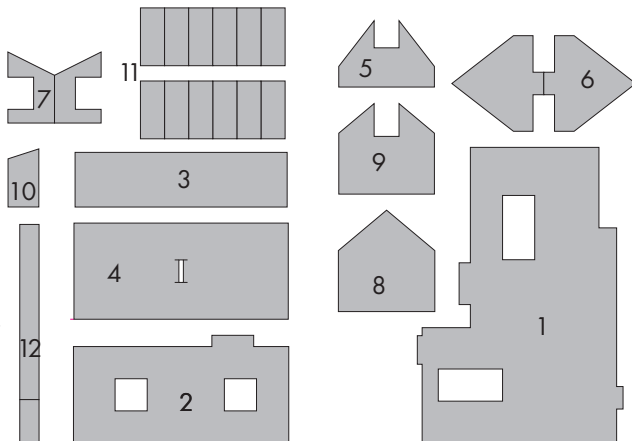


3 STRENGTHENERS & LASER CUT COMPONENTS.

To help identify the strengtheners, below is a key to the components.

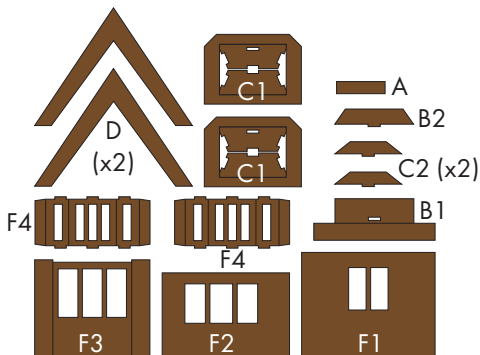
Strengtheners Components Key.

- 1 - Main House Base
- 2 - Main House Inner Former
- 3 - Rear Wall Support
- 4 - Inner Floor
- 5 - Chimney Wall Support
- 6 - Centre Roof Support
- 7 - Front Porch Side Door
- 8 - Side Extension Wall Support
- 9 - Extension Chimney Wall Support
- 10 - Rear Roof Support
- 11 - Chimney Spacers (2 x 6)
- 12 - Inner Wall Support



Brown Laser Cut Components Key.

- F1 - Side Extension Window Frame
- F2 - Front Extension Window Frame
- F3 - Bay Window Frame
- F4 - Dormer Window Frames (x2)
- A - Alcove Bench Seat
- B1 - Bay Window Former
- B2 - Bay Roof Former
- C1 - Dormer Window Formers (x2)
- C2 - Dormer Window Roof Formers (x2)
- D - Dormer Roof Former



Laser Cut Strengtheners components are all used in constructing the Side Chimney (see page 12)

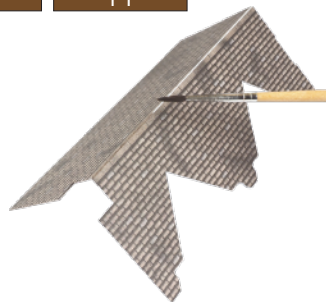
4 PAINTING THE EDGES

The components on Sheet C have white edges and fold lines that will need to be painted. All you need is a simple set of water colour paints and a fine brush, like this 'Reeves' watercolours.

Mix your colour with lots and lots of water, apx. 1 part paint to 5 parts water or more. TEST ON WASTE CARD FIRST UNTIL YOU HAVE THE CORRECT SHADE & COLOUR.



Paint all the exposed edges and folds on the components from Sheet C.



Fold the edges of the card back fully and gently run the point of your brush along the exposed white card. Only tiny amounts of paint on your brush. It's better to have to go over it a few times than to flood it with paint. Before the paint dries, run your finger along the edge to rub the colour into the absorbent white card. Then wipe away any paint that has run onto the printed surface before it dries. Remember, you only need to just slightly tint the card with a little colour. DON'T paint a thick solid line down the edges, you will only make it look worse.

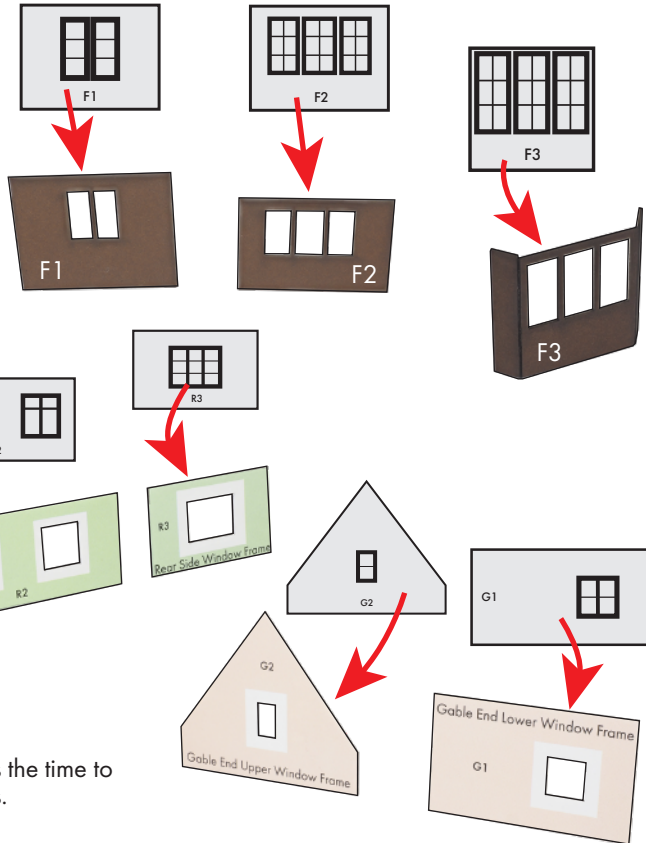
5 WINDOWS

Carefully cut out the glazing along the outer white lines, put aside the F4 dormer windows for the time being, these require the frame to be assembled first - see fig. 5

Fix each window to the corresponding window frame openings with the matt printed side facing through the openings.

Make sure the window is centred correctly within the frame.

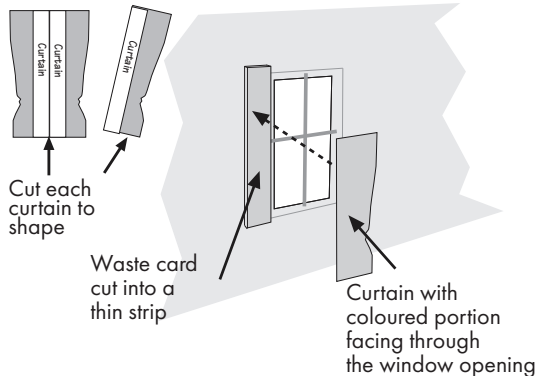
Use only tiny drops of glue and be careful to avoid getting glue onto the visible window.



If you wish to add curtains, now is the time to do so. See back page for curtains.

To fit curtains fix a small strip of waste card to each side of the window, then glue the curtain to the waste card so that it shows through the window (the waste card will space the curtain back from the window a little giving a greater effect of depth).

For extra curtains, visit this product on our website www.metcalfe-models.com



Place the completed windows to one side in your builders yard until they are needed in the build.

LETS START TO BUILD!

Part 1. THE MAIN HOUSE

1. First thing to do is to build the foundations. Test the fit with all three parts before applying glue.

Fold back and glue the two yellow position tabs on the printed Main House Base and glue to the underside.

These position tabs then slot into the outer area of the spaces on the Main House Base (strengtheners #1) glue together keeping all the edges flush.

Position tabs fit here

Fold back the two position tabs on the Main House Inner Former (strengtheners #2) and glue flush to the underside.

Glue the Inner Former to the base keeping the front 'step' and side edges aligned and flush.

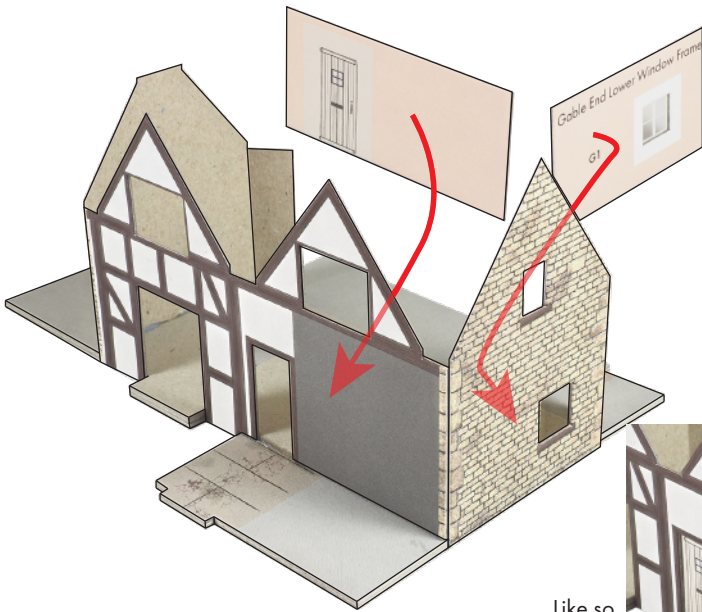
Like this.

Like so.

2. Now onto the walls, wrap the Main House Walls around the inner former with the front and gable end overlapping the main base edge.

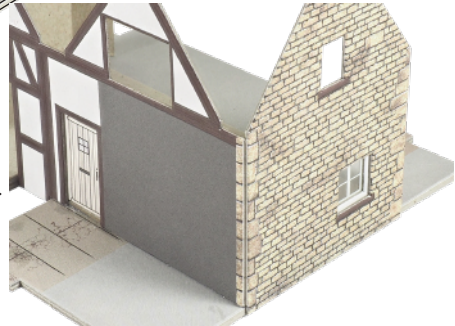
No need to glue the rear wall sections just yet, leave them loose for easier access.

Start with the bay window opening 'straddling' the step, then fold around with the walls pressed against the inner former.

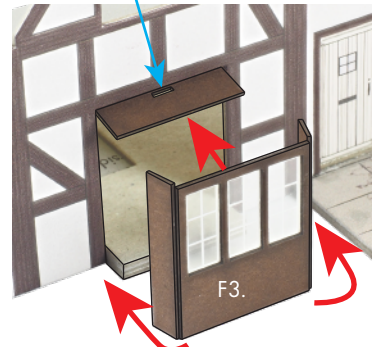
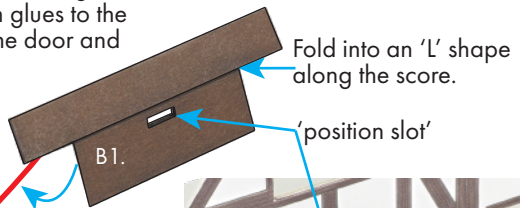
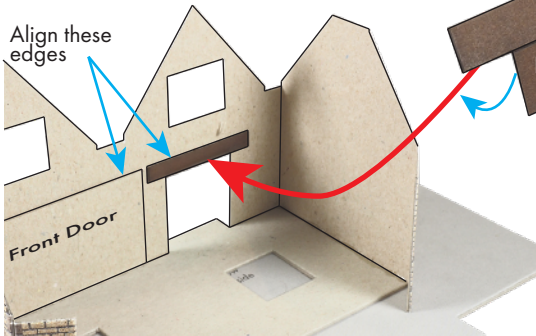


Next add the front door and the gable end lower window frame. Carefully align and centre the door and window through the corresponding openings on the outer walls, and glue into place with the bottom edge flush to the inner floor.

Like so.



3. Now to the bay window, first fold the Bay Window Former (laser cut component B1) into an 'L' shape. The shorter length with the small 'position slot' fits through the bay window opening. The longer length glues to the inside wall and gable end window frame.



Then add the bay window (laser cut component F3), this wraps around the base 'step' and flush to the main walls. The bay window former rests on top of the window frame, with the window frame sides fitting flush to either side. Test the fit before applying glue.

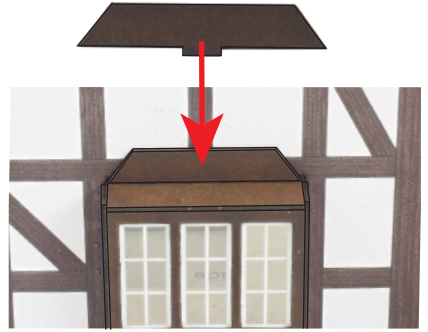


Like so.

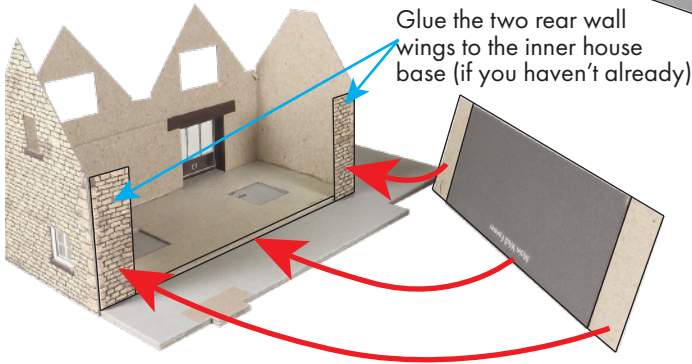
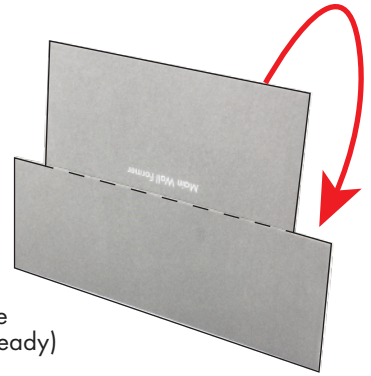
Slot the Bay Roof Former (laser cut component B2) into the 'position slot' on the top of the bay window and fix flush to the main wall.

Finally add the bay roof using the former as gluing points.

Like so.

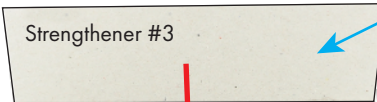


4. Fold the Main Wall Former back onto itself and glue the halves together.

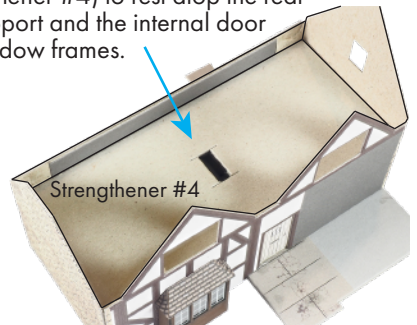
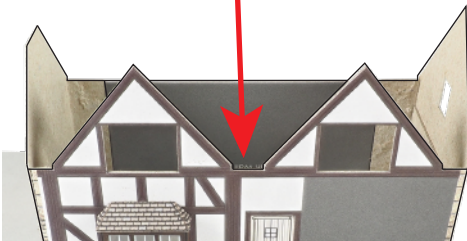


Then fix the main wall former flush to the inner house base with the wing walls fitting to the 'overlap' of the former.

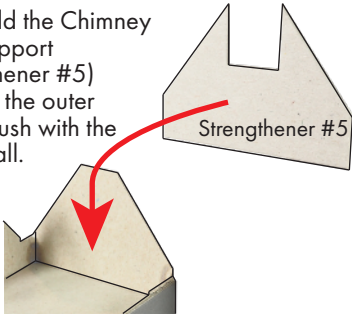
Add the Rear Wall Support (Strengthener #3) to the inside of the main wall former, flush to the base.



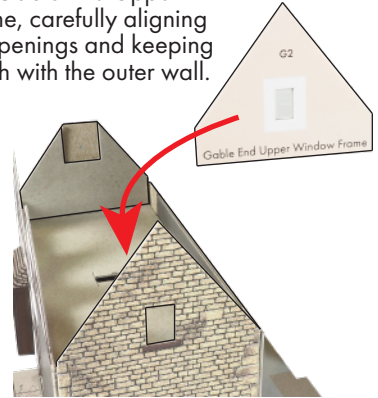
Then drop in the Inner Floor (Strengthener #4) to rest atop the rear wall support and the internal door and window frames.



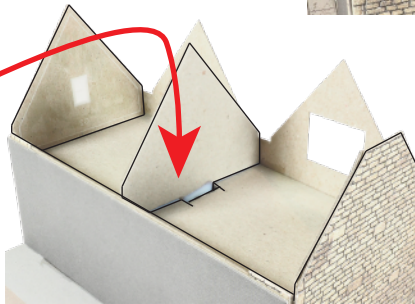
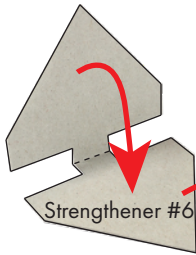
Now add the Chimney Wall Support (strengtheners #5) keeping the outer edges flush with the outer wall.



Also add the Gable End Upper Window Frame, carefully aligning the window openings and keeping the edges flush with the outer wall.

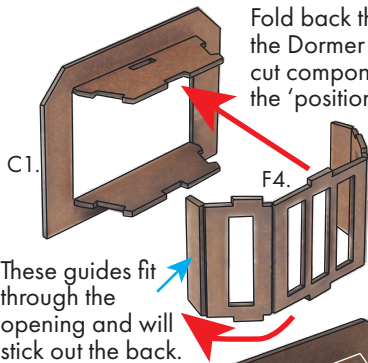


Fold and glue the Centre Roof Support (strengtheners #6) in half, keeping the edges flush.



Then fit the Centre Roof Support into the slot on the Inner floor and glue in place. (The slot is wider than the tab so glue to an edge of the slot and at a right angle to the floor)

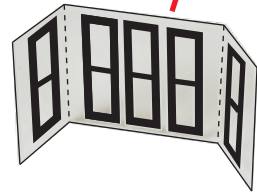
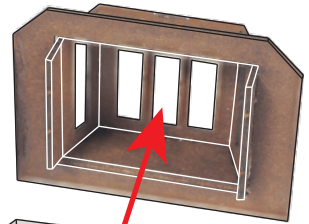
5. Now for the dormer windows, this is a tad tricky so fully test the fit before applying glue so you can see how they go together.



Fold back the tabs 90 degrees on the Dormer window Former (Laser cut component C1) The tab with the 'position slot' is the top

Test Dormer Window Frame (Laser cut component F4) scores making sure they fold easily. Note the 3 tabs on the top and bottom, these fit into the slots on the former tabs.

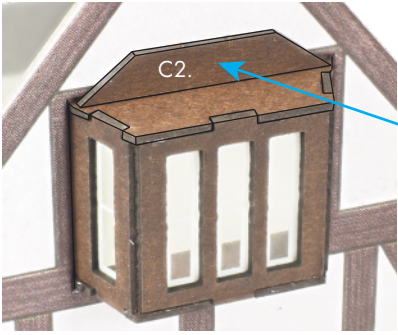
Once you have tested the fit apply tiny spots of glue to hold the parts in place.



Like so.

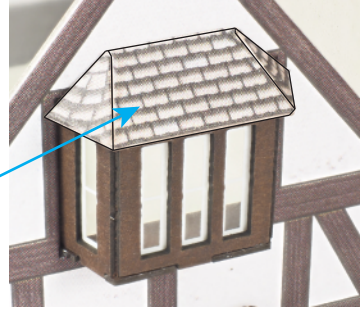


Then carefully score the dashed line on the F4 windows, and bend back the side windows to match the angle of the dormer window frame. Test the alignment of the windows to the openings, tweak if required, then glue into place with tiny spots of glue.



Push the dormer window through the opening on the main wall and glue into place.

Then, like the Bay window, slot the dormer roof former (Laser cut component C2) into place using the 'position slot' as a guide for the bottom tab. Glue flush to the wall.

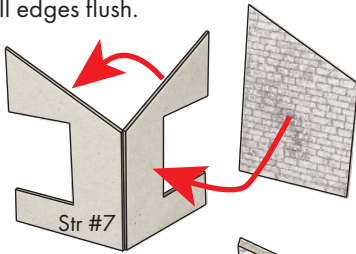


Lastly add the roof section, using the former for glue points.

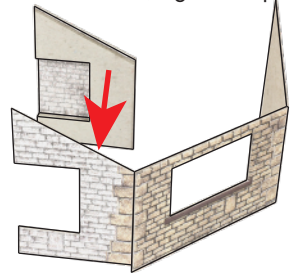
Repeat with the second Dormer window. That's as far as we go with the main part of the house for the moment. DO NOT attach the Main roof yet.

Part 2. THE HOUSE EXTENSIONS & PORCH

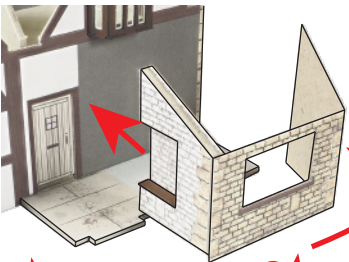
6. Fold the Front Porch Side Door (Strengtheners #7) in half and glue to the Front Extension Alcove, keeping all edges flush.



Then glue to the back of the whitewashed wall of the Front Extension Wall, again keeping all edges flush.

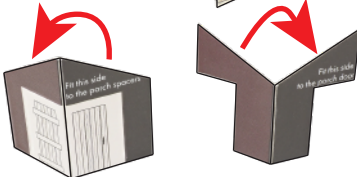
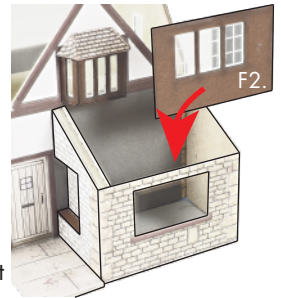


Add the Alcove Bench Seat (laser cut component A)

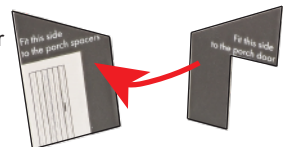


Add the wall to the main house, wrap the front and side wall around the base with the alcove wall resting atop the base and flush with the door frame.

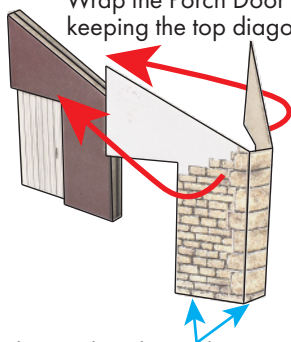
Then add the front extension window frame (laser component F2) careful to align the window centre to the opening.



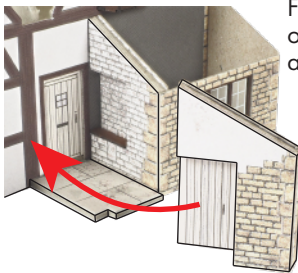
Fold the Porch Door and Porch Door Spacers in half, then combine the door and spacers on the 'black' side, keeping all edges flush to form a solid block 4 layers thick.



Wrap the Porch Door Outer wall around the block keeping the top diagonal and back edges flush.

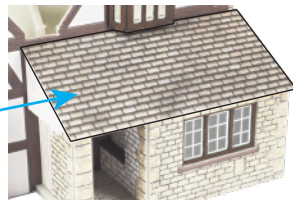


These edges hang down below the inner block.

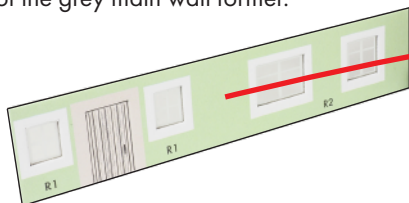


Fit the walls onto the base, the overhanging outer walls fitting around the front step.

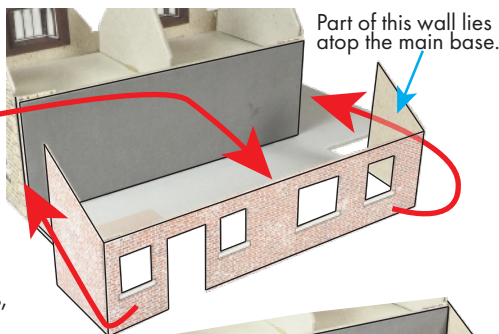
Lastly centre and glue into place the Front Roof.



7. Now to the rear of the building, Wrap the rear extension walls around the base and fix to the edges of the grey main wall former.



Then add the extension inner wall and frames, aligning the windows and door through the openings in the outer wall.

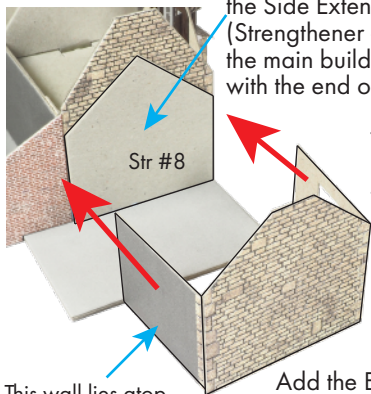


Part of this wall lies atop the main base.

Like so.



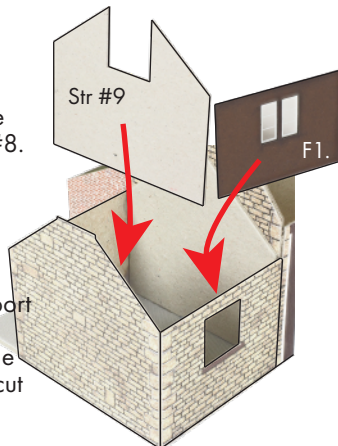
8. Side Extension next. Start by gluing the Side Extension Wall Support (Strengtheners #8) to the end wall of the main building. Keep the edges flush with the end of the main building.



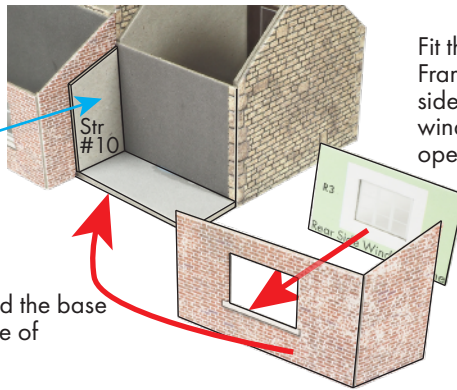
Then wrap the Side Extension Walls around the base and flush to the edges of Strengtheners #8.

This wall lies atop the main base.

Add the Extension Chimney Support (strengtheners #9) centred to the inside of the end wall and the Side Extension Window Frame (laser cut component F1) with the window centred through the opening.



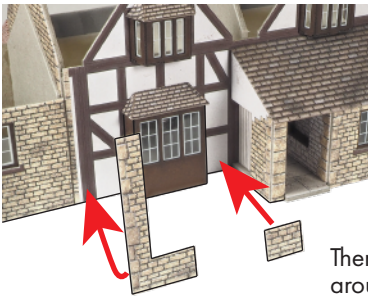
9. Finally the Rear Side Extension.
First add the Rear Roof Support (Strengtheners #10). Tight up against the grey wall and flush with the edge of the base



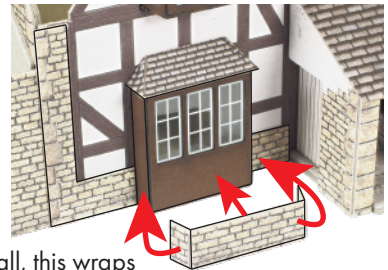
Fit the Rear Side Window Frame to the back of the rear side extension wall with the window centred through the opening.

Then wrap the wall around the base and flush against the edge of Strengtheners #10

10. Before we move onto adding the roof, the front wall sections need to be fixed into place.



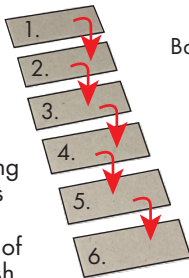
First add the L/H and R/H Front wall sections, keeping the bottom edges flush with the base of the build, and tight up against the bay window.



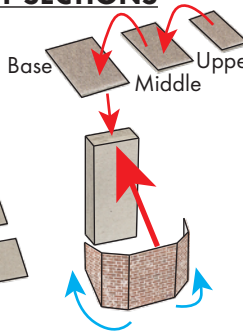
Then add the Bay Window wall, this wraps around the base of the bay window and flush against the L/H and R/H wall sections.

Part 3. CHIMNEYS & ROOF SECTIONS

Like so.



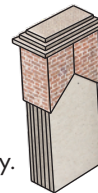
11. Start by combining the Chimney Spacers (Strengtheners #11) into two solid blocks of six with all edges flush.



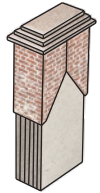
Combine the Chimney Tops, base, middle and upper, centre each layer with an even space around each edge.

Wrap the Main Chimney around the top of the block of spacers, keeping the top edges flush, then add the Chimney top, centred on top.

Like so.

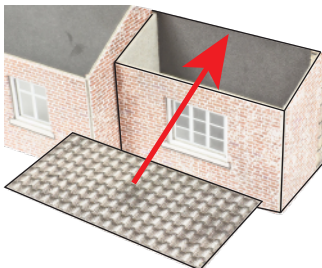


Extension Chimney



Main Chimney

Repeat for the Extension Chimney.

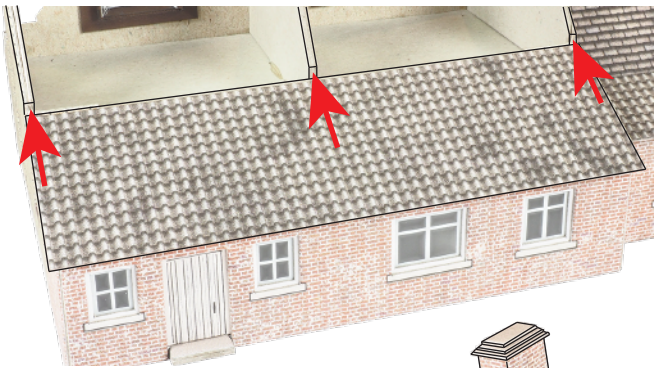
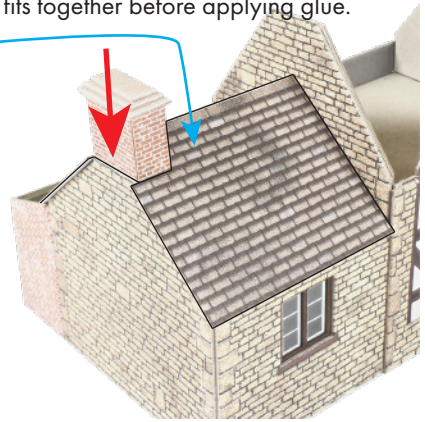
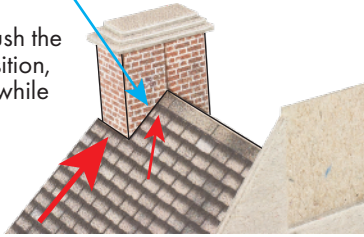


While the Chimney sections are drying, add the Rear Side Roof, push up to the side extension wall and glue in place.

Test this fit before applying glue so you can see how it all fits together before applying glue.

12. Add the Side Extension roof, then slot the Extension Chimney (this has a shorter wall section compared with the Main Chimney) Before the roof sets in place gently push the roof up so it fits flush to the inside of the chimney walls.

Take care not to push the chimney out of position, and hold in place while the glue dries.

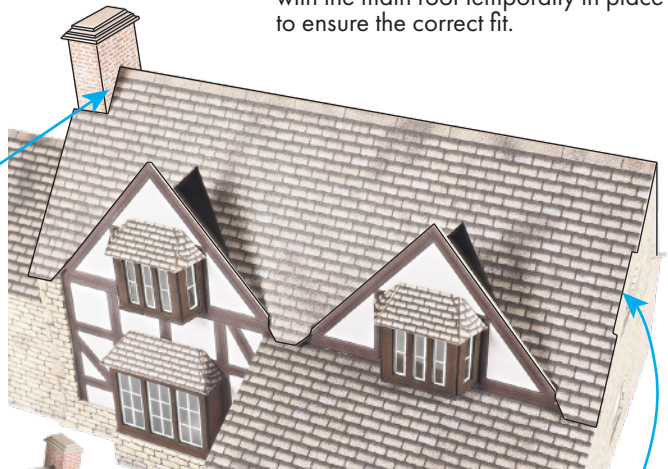


13. Add the Rear roof fitting flush up against back of the main building.

Note: Make sure the roof sits on top of the rear wall 'wings' (see fig. 4) and the main wall former resting tight against the roof supports or else you may get a gap between the Main roof and the rear roof. See the photo at the bottom of the page. Again test the fit before adding glue with the main roof temporarily in place to ensure the correct fit.

14. Now fit the Main Roof, like the Side Extension Roof, fit the roof first, then drop in the Main Chimney. Push up the roof gently before the glue sets so it lies flush against the base of the chimney brickwork.

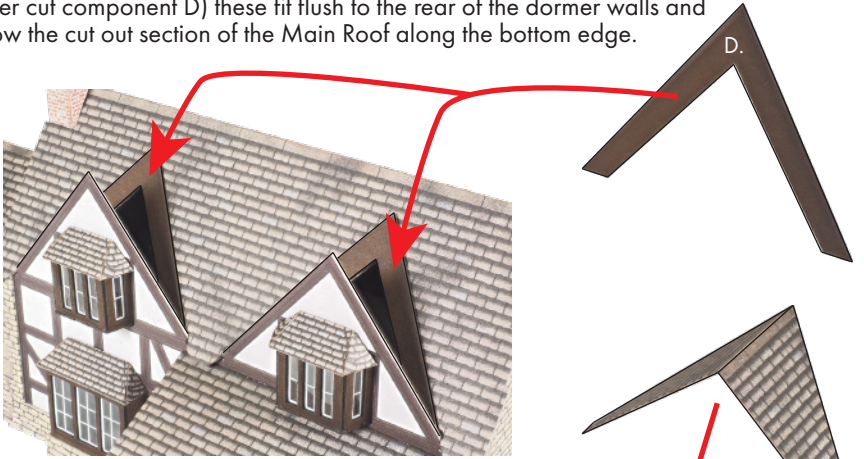
Again test the fit first so it's clear how it fits together before applying glue.



Like so.

Note the cut away section of the roof fits flush with the gable end wall to allow the side chimney to fit tight against the building.

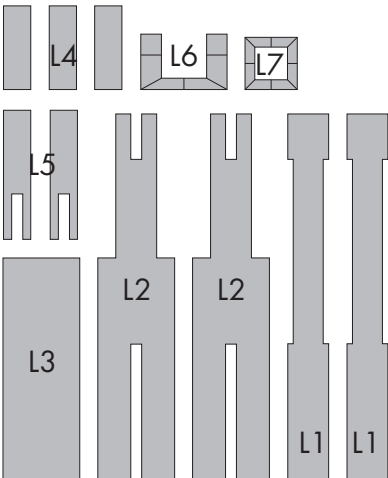
15. Finally the Dormer Roofs. First add the two Dormer Roof Formers, (Laser cut component D) these fit flush to the rear of the dormer walls and follow the cut out section of the Main Roof along the bottom edge.



The two Dormer Roofs then fit the top of the formers and overhang the front, attach with tiny spots of glue and hold in place while the glue sets.



Part 4. THE SIDE CHIMNEY

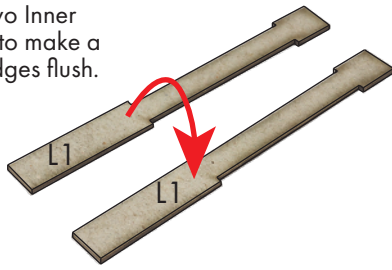


16. Time to find the laser cut Strengtheners Sheet. All of these components are used in the construction of the Side Chimney.

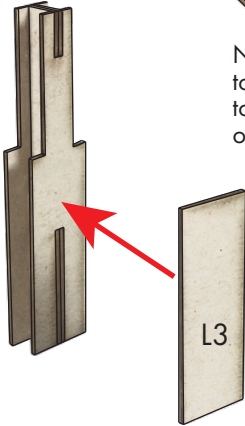
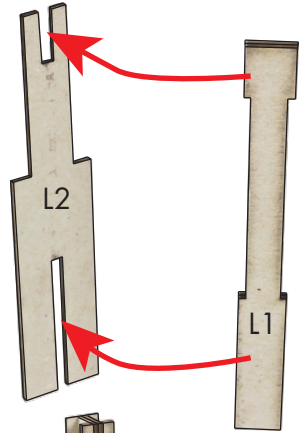
Laser Cut Strengtheners Components Key.

- L1 - Inner Supports (x2)
- L2 - Outer Supports (x2)
- L3 - Base Support
- L4 - Chimney Formers (x3)
- L5 - Chimney Positioner (x2)
- L6 - Half Chimney Coping
- L7 - Full Chimney Coping

17. First combine the two Inner Supports (L1) together to make a solid block. Keep all edges flush.

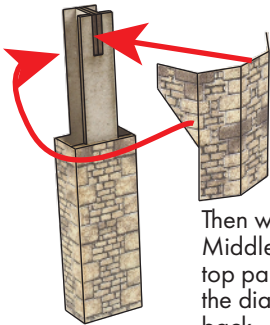


Now fix the two outer supports (L2) to either side of the inner block, the top and bottom tabs fit into the slots on the outer supports.

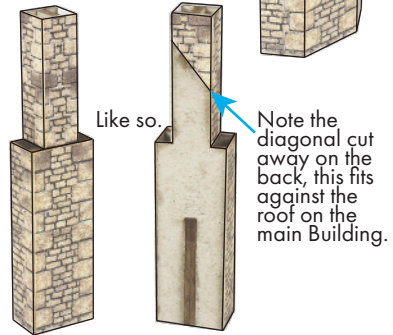
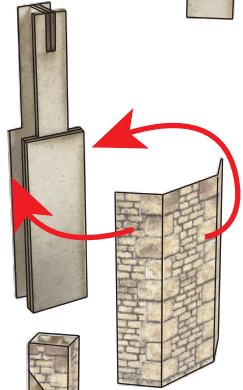


Then fit the Base Support (L3) flush to one side of the outer support. This will be the front going forward.

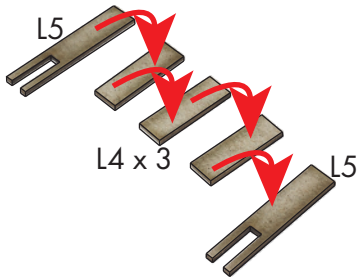
Wrap the Side Chimney base around the front side of the support, keeping the side walls flush with the back of the support.



Then wrap the Side Chimney Middle all the way around the top part of the support, with the diagonal cut section at the back.

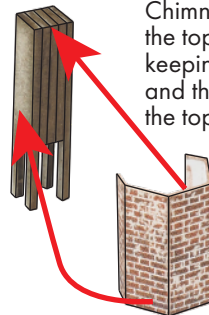


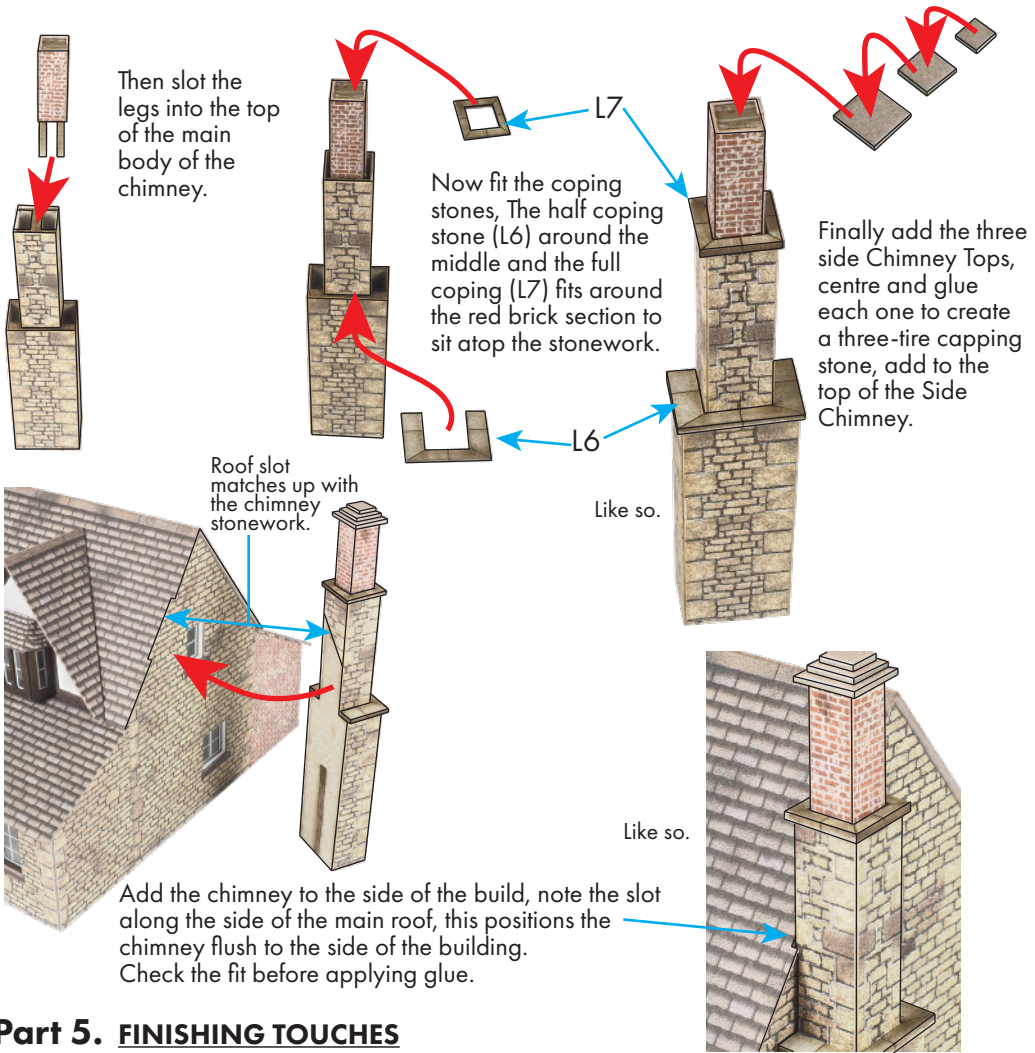
Like so.



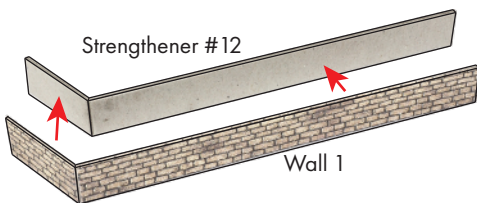
Now combine the three chimney formers (L4) into a solid block, then add a chimney positioner (L5) on either side of the block.

Then wrap the Side Chimney Upper around the top of the block, keeping the 'legs' free and the edges flush with the top.

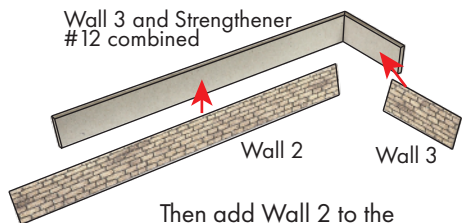




Part 5. FINISHING TOUCHES

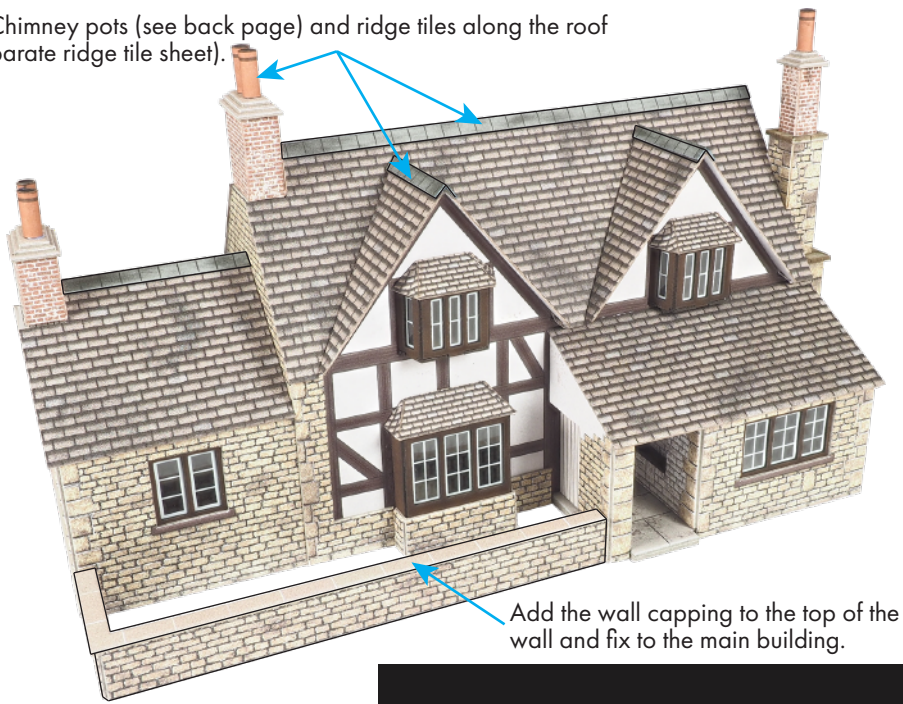


18. The front wall, fold the inner wall support (Strengthenner #12) along the score to a right angle, then face the support with Wall 1, keeping the right angle.



Then add Wall 2 to the inside, then Wall 3 to the inside of the short section.

19. Fit Chimney pots (see back page) and ridge tiles along the roof (see separate ridge tile sheet).



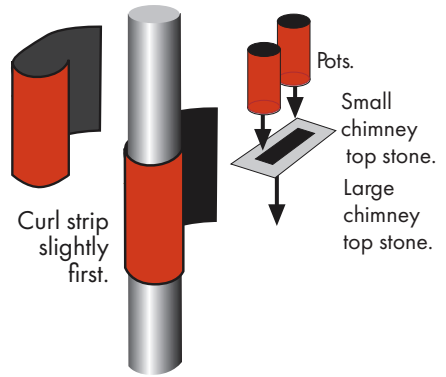
CHIMNEY POTS

Cut into strips the chimney pots, then roll tightly around a nail or rod approximately 4mm in diameter

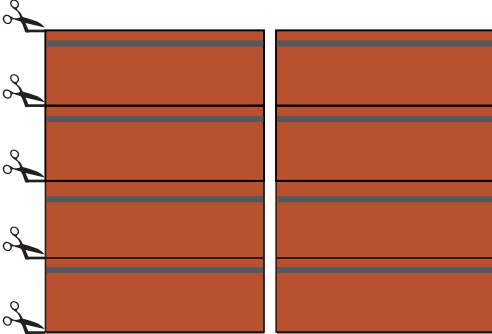
Then unroll the end enough to smear with a little glue, then roll back up and hold tight until set. To finish dab a little paint on top of the pot.

Please Note: once you have perfected the art of rolling your own chimney pots you will soon realise that they are extremely realistic and finish the model nicely. So please be patient and keep trying, the chimney pots do make all the difference. You can download more chimney pot sheets from our website: www.metcalfeamodels.com - navigate to this product and click the downloads tab.

There will be a pdf you can download and print.



CHIMNEY POTS



CURTAINS

