

**Pocket
Collection**

2022

Emilcottoni

EMILCOTONI GREEN CHOICE



Emilcotoni **CARBON FOOTPRINT**

A carbon footprint is the total greenhouse gas emissions caused by an individual, event, organization, service, or product, expressed as carbon dioxide equivalent.

Emilcotoni has been working for some time to gain sustainability standards that are just as high as the quality of its yarns.



SteP By OEKO-TEX®

SteP By OEKO-TEX® is a modular certification system for production facilities in the textile and leather industry. The goal of SteP is to implement environmentally friendly production process in the long term, to improve health and safety and to promote socially responsible working conditions at production sites.



Standard 100 by OEKO-TEX®

The STANDARD 100 by OEKO-TEX® certification is the worldwide best-known voluntary "ecological-label" for textile products and accessories. The label guarantees that textile products and their accessories do not release harmful substances to human health and are therefore safe products from the human-ecological point of view.



BCI™

The Better Cotton Initiative, a global no-profit organization, is the largest cotton sustainability program in the world. BCI exists to make global cotton production better for the people who produce it, better for the environment it grows in, and better for the sector's future.



GOTS by ICEA

The Global Organic Textile Standard is recognised as the most important standard for sustainable production, from the harvesting up to labelling, of garments and textile products made of natural fibres from organic farming such as organic cotton or organic wool.



GRS by ICEA

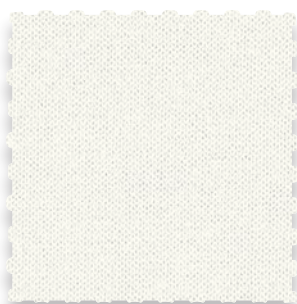
The Global Recycled Standard is a holistic certification for products with recycled content. The desired effect of the GRS is to provide brands with a tool for more accurate labeling, to encourage innovation in the use of reclaimed materials, to establish more transparency in the supply chain, and to provide better information to consumers.

SCAN THE QR CODE TO DISCOVER
ALL ABOUT OUR CERTIFICATIONS



ORGANIC

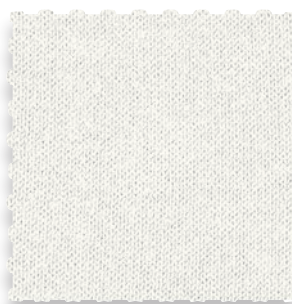
34



Nm 33.000
Nm 25.000
100% ORGANIC SUVIN GOLD
cotton



17



Nm 2/100.000
Nm 3/100.000
Nm 4/100.000
100% ORGANIC ISRAEL PIMA
compact cotton



New

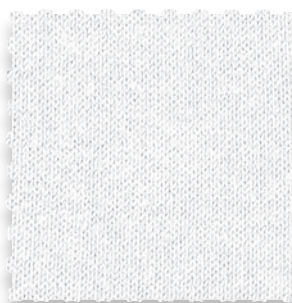
2



Nm 2/50.000
Nm 3/50.000
100% LS ORGANIC
compact cotton



19

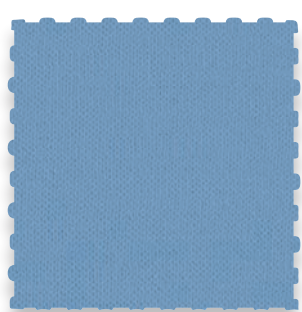


Nm 2/65.000
Nm 3/65.000
Nm 4/65.000
100% ORGANIC compact cotton



QUINTESSENCE

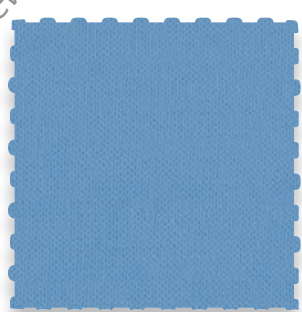
26



Nm 2/100.000
Nm 3/100.000
100% SEA ISLAND gassed cotton

New

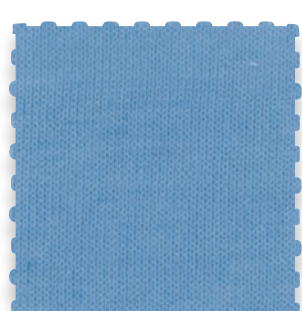
25



SEA ICE

Nm 3/100.000
Nm 4/100.000
100% HT SEA ISLAND cotton

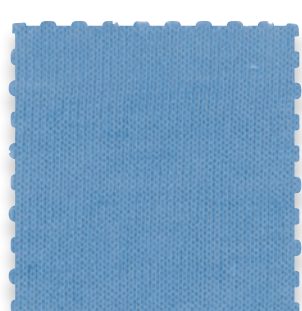
33



SUVIN

Nm 2/140.000
Nm 3/90.000
100% SUVIN gassed cotton

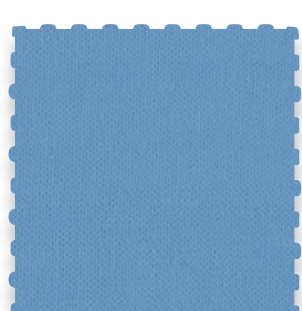
33



SUVIN HT

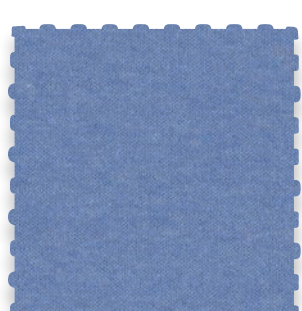
Nm 3/90.000
100% SUVIN gassed cotton

9



Nm 2/68.000
Nm 3/68.000
Nm 2/100.000
100% GIZA 45 gassed cotton

30

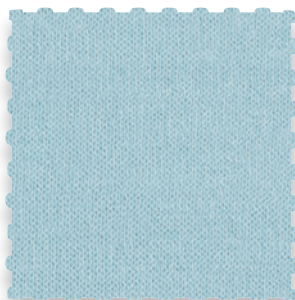


superioma

Nm 2/70.000
Nm 3/70.000
100% ELS gassed cotton

CLASSIC

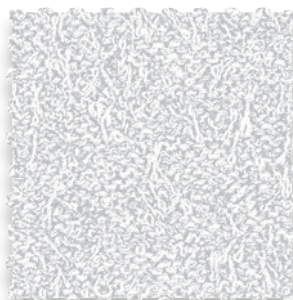
2



Piuma

Nm 2/50.000
Nm 3/50.000
Nm 8/50.000
100% LS GIZA cotton

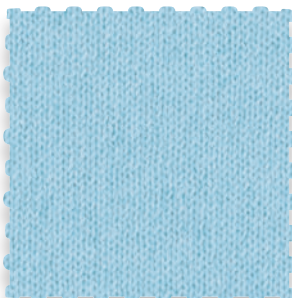
18



Piuma Vrile

Nm 9.200
63% polyamide
37% LS GIZA cotton

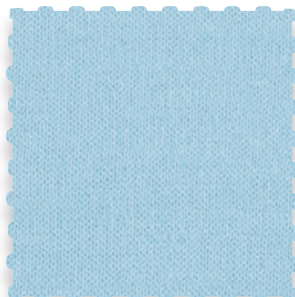
5



ExtraFine

Nm 2/54.000
Nm 3/54.000
100% LS gassed mercerized
cotton

31

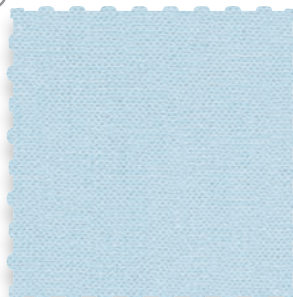


**SUPER
WASH**
COTTON

Nm 2/54.000
Nm 3/54.000
100% **SUPIMA** gassed cotton
WORLD'S FINEST COTTONS

New

12



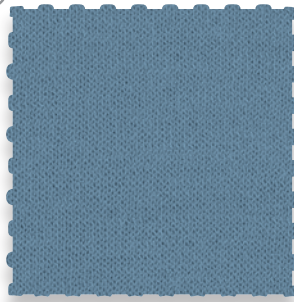
Kyoto

Nm 3/100.000
Nm 4/100.000
100% LS gassed cotton

CREPE

New

12



NARA

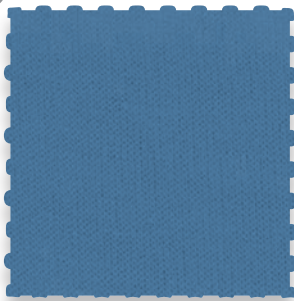
Nm 3/100.000

Nm 4/100.000

100% HT compact gassed cotton

New

11



ICE  CREPE®

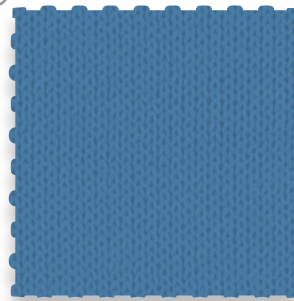
Nm 2/64.000

Nm 3/64.000

100% EHT Top Blended
gassed cotton

New

11



ICE  seventy5

Nm 7.500

100% EHT Top Blended
gassed cotton

13



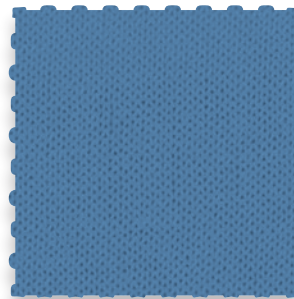
Lorel

Nm 2/60.000

Nm 3/60.000

100% LS gassed cotton

13



Dry

Nm 2/54.000

Nm 3/54.000

100% HT compact cotton

Q AND WEAR

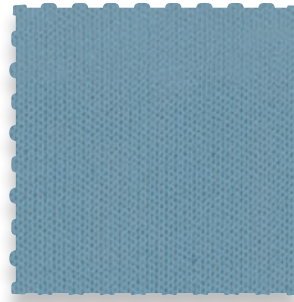
20



Q380

Nm 47.500 (Nm 380.000/2x4)
100% Top Blended gassed cotton

20



Q270

Nm 27.000 (Nm 270.000/2x5)
100% Top Blended cotton

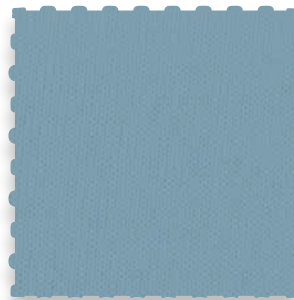
20



Q170

Nm 21.250 (Nm 170.000/2x4)
100% Top Blended cotton

20

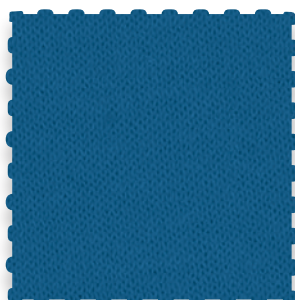


EVOLUTION
NATURAL STRETCH COTTON

Nm 2/100.000
Nm 3/100.000
Nm 4/100.000
100% Top Blended
compact gassed cotton

SILK AND LINEN

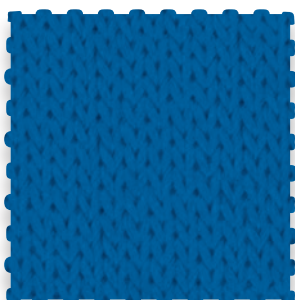
4



Elisir

Nm 2/140.000
Nm 4/140.000
70% Top Blended cotton
30% silk

4



Elisir Cablé

Nm 3.500
70% Top Blended cotton
30% silk

22



REALSILK

Nm 2/56.000
Nm 3/56.000
80% ELS cotton
20% silk
compact

1



ALASKA

Nm 24.000
60% linen
40% ELS cotton
gassed

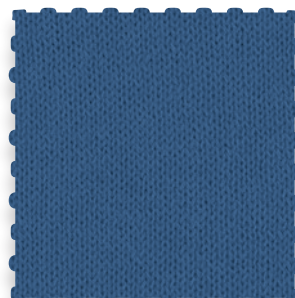
14



MOIRÉ

Nm 23.500
60% linen
40% ELS cotton

14



**MOIRÉ
SQUID**

Nm 23.500
60% linen
40% ELS cotton

BRILLIANCE

6



F1RST

Nm 22.000
Nm 34.000
100% Top Blended
gassed mercerized cotton

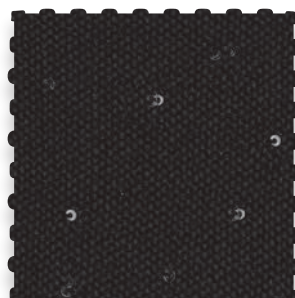
7



**F1RST
SHINE**

Nm 16.800
98,3% Top Blended
gassed mercerized cotton
1,7% polyester (paillettes)

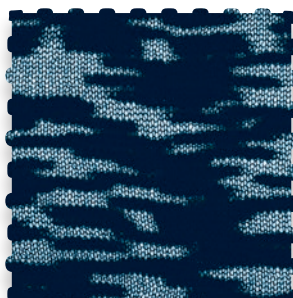
15



Moulin Rouge

Nm 23.000
98% ELS cotton
2% polyester (paillettes)

10



Grace

Nm 17.000
60% ELS cotton
40% polyamide

29



**Super
LUX**

Nm 34.500
73% ELS cotton (CO)
27% nylon lurex (PA)

27



spin

Nm 2.200
70% ELS mercerized cotton
30% polyamide

28



**spin
PRINTED**

Nm 2.200
70% ELS mercerized cotton
30% polyamide

STRETCH AND TECH

32

surface

Nm 16.500
55% cotton
42% polyamide
3% elasthan

New

35



Tokyo

Nm 38.500
80% ELS cotton
20% Elitè (Pbt)

36

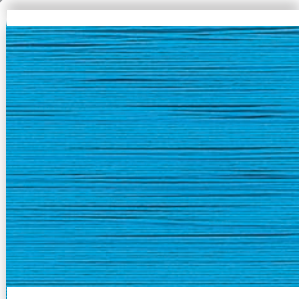


TOKYO ICE

Nm 33.000
80% ICE CREPE® cotton
20% Elitè (Pbt)

New

24

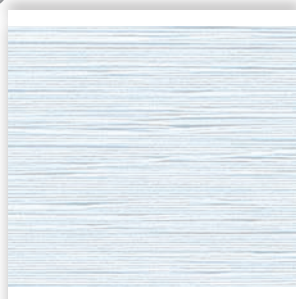


SCREEN

Nm 12.000
25% Top Blended cotton
75% PU

New

24

PHOTO
SCREEN

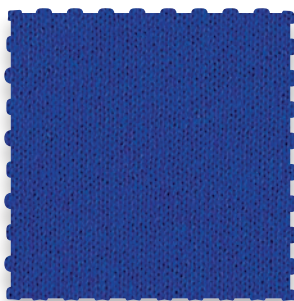
Nm 12.000
25% Top Blended cotton
75% PU

2

PIUMA
GLAZED **HARD**
EFFECT

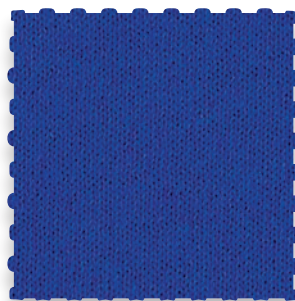
GLP - HARD 16 Nm 16.300
63% LS GIZA cotton
37% hi-tech polyamide
GLP - HARD 12 Nm 12.300
72% LS GIZA cotton
28% hi-tech polyamide

2

PIUMA
GLAZED **MEDIUM**
EFFECT

GLP - MEDIUM 18 Nm 17.800
70% LS GIZA cotton
30% hi-tech polyamide
GLP - MEDIUM 13 Nm 13.200
78% LS GIZA cotton
22% hi-tech polyamide

2

PIUMA
GLAZED **SOFT**
EFFECT

GLP - SOFT 20 Nm 19.800
78% LS GIZA cotton
22% hi-tech polyamide
GLP - SOFT 14 Nm 14.200
84% LS GIZA cotton
16% hi-tech polyamide



Emilcotoni S.p.A.

Viale dell'Industria, 12 - 29122 Piacenza (Italy)
Tel. +39.0523.606913 - Fax +39.0523.608054
info@emilcotoni.it www.emilcotoni.it

OEKO-TEX®
CONFIDENCE IN TEXTILES



16000737 CENTROCOT

Sustainable Textile Production,
www.oeko-tex.com/step

