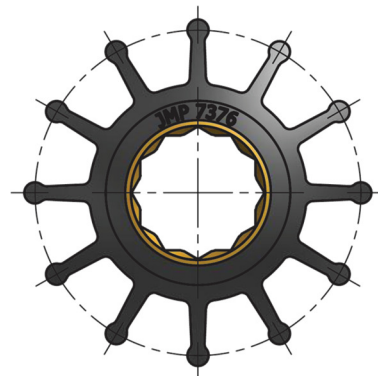
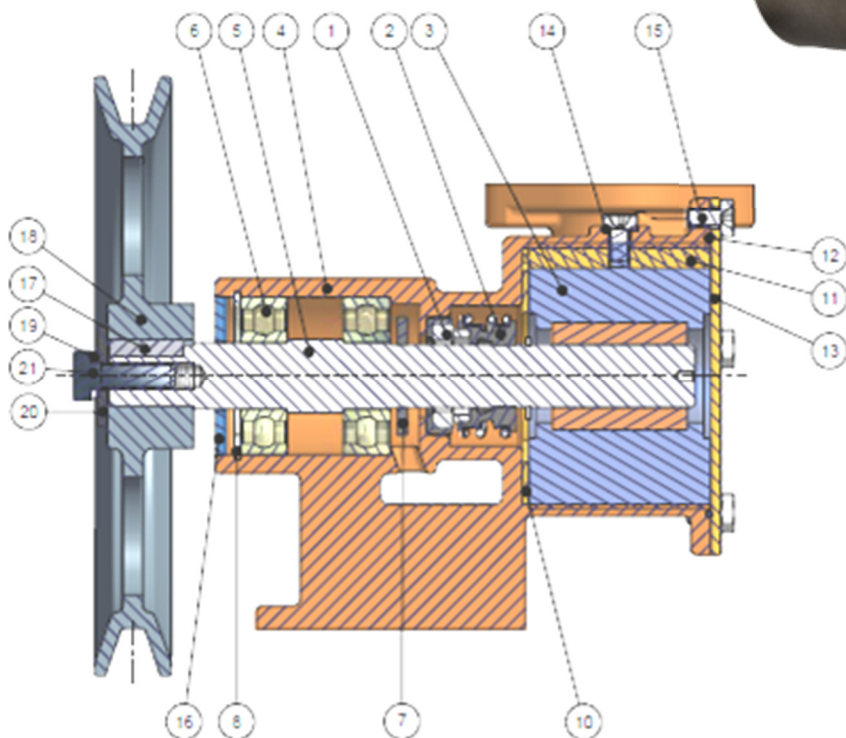
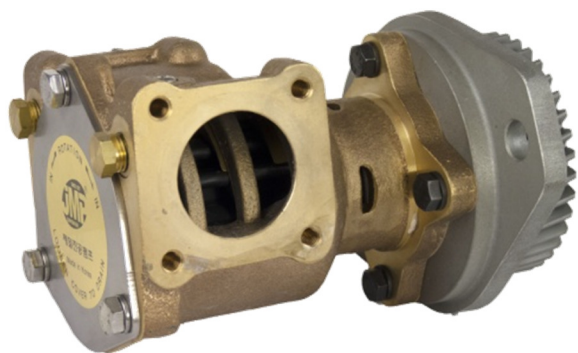




# Pompe con Girante

## Campagna Prozionale2020



SCANDIESEL S.r.l.

Sede Legale / Registered Office: Via Magnani Ricotti, 2 – 28100 NOVARA

Sede Operativa / Headquarters:

Via Possessione, 25 – 28100 NOVARA (Italy)

Tel: +39 3482213126 – +39 346 0933830

Fax: +39 0321 637227

e-mail: [a.origo@scandiesel.biz](mailto:a.origo@scandiesel.biz)

WEB: [www.scanditaly.it](http://www.scanditaly.it)



Validità 31 / 10 / 2020

## JMP Pompe con Girante – Raffreddamento Motori

Marca Motore	Modello Motore	Codice Pompa Originale	Codice JMP	Promozione 2020	Codice Girante
Caterpillar	3054, 3056	4255411	JPR - CT3054	€ 577	7400-01
Caterpillar	C4.4	4255412	JPR - CT0440	€ 577	7400-01
Caterpillar	3116, 3126, C7, C9	4P-7168, 7E-3268	JPR - S7632	€ 552	7608-01
Caterpillar	3304, 3304B, 3306, 3306B, D330C, D333C	5N9357	JPR - CT3306	€ 752	8100-01
Caterpillar	3176, 3406, 3406B, 3406C	112-6177, 1W8584, 3N4851, 3N4852	JPR - CT3406	€ 1.253	8300-01
Caterpillar	D343, D353C, D353D, D353E	3N1888	JPR - CT3530	€ 1.520	8300-01
Caterpillar	3408, 3408B, 3408C	3N7714, 3N8214	JPR - CT3408	Parti disponibili	IMP0063



**JPR-CT3054**



**JPR-S7632**



**JPR-CT3306**

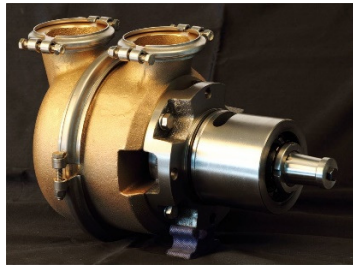


**JPR-CT3530**



**JPR-CT3406**

Caterpillar	3408, 3408B, 3408C, 3412, 3412C, 3412D	3N8561, 7C3613, 7C8382	JPR - CT3412	€ 3.229	IMP0026
Caterpillar	D336, D343, D353C, D353D, D353E	4L5788	JPR - CT3430	a richiesta	
Caterpillar	3408, 3408B, 3412, 3412C, 3412D, 3412E, 3508, 3508B, 3508C, 3512, 3512B, 3516B,	5N7491, 7C3614	JPR - CT3508	€ 3.554	IMP0063
Caterpillar	C12	3596661	JPR - CT1200R	Parti disponibili	
Caterpillar	C18	1318272, 1968895, 3754703	JPR - CT1800R	€ 1.653	8359-01
Caterpillar	C32	3228594	JPR - CT3200R	Parti disponibili	



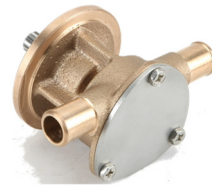
**JPR-CT3508**



**JPR-CT3412**



**JPR-CT1800R**



**JPR-CM08IH**



**JPR-CM10LH**

Craftsman Marine	CM2.16, CM3.27, CM4.42	AA.200.900.20, AA.300.90030, AA.480.90020	JPR - CM08IH (1, 2, 3)	€ 155	7070-01
Craftsman Marine	CM4.65, CM4.80	AA.480.90020	JPR - CM10LH	€ 194	7100-01
Cummins	4B3.9M, 4B3.9-D(M), 4BT3.9M, 4BTA3.9M, 4BT3.9-D9(M), 4BTA3.9M, 6B5.9M, 6B5.9-D(M), 6BT5.9M, 6BT5.9-D(M)	3907458, 3912019	JPR - C1025	€ 375	7300-01
Cummins	6C, QSB 5.9, QSB 6.9	5268375, 4948142, 3974455	JPR - S7608	€ 661	7608-01
Cummins	6BTA5.9M2, 6BTA5.9M(JWAC), 6BTA5.9M3(SWAC), 6CT8.3-D(M), 6CTA8.3M2(SWAC), 6CTA8.3-D(M), 6CTA8.3-M1(JWAC)	3866493, 3897691	JPR - S7630	€ 511	7608-01
Cummins	6CTA 8.3M(JWAC9., 6CTA8.3M2	3897194	JPR - S7627	€ 551	7608-01



**JPR-C1025**



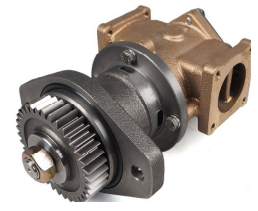
**JPR-S7608**



**JPR-S7630**



**JPR-S7627**



**JPR-C0700**

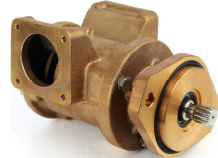
Cummins	N855M, NT855M, NT855-D(M), NTA855M	3010336, 3278137	JPR - C1040	€ 570	8000-01
Cummins	VT903M	3010336, 217308	JPR - C1050	a richiesta	
Cummins	QSC. 7	2886308	JPR - C0700	€ 784	8159-01
Cummins	QSC.8.3	3967246	JPR - C0830	€ 784	8159-01
Cummins	QSM11	3349392, 5260393	JPR - C1100	€ 1.015	8359-01
Cummins	KT19M, KTA19M, KTA19M3/M6, KTA19-D(M), KTA19-D(M1), QSK19	3866609	JPR - C1905	€ 2.235	9000-01



**JPR-C1040**



**JPR-C1050**



**JPR-C1100**



**JPR-C905**



**JPR-C1900 JPRC3800**

Cummins	K19	SENZA INGRANAGGIO	3049158, 3074540	JPR - C1900	€ 3.230	IMP00260 1
Cummins	K19	CON INGRANAGGIO	3049158, 3074540	JPR - C1900G	€ 3.326	IMP00260 1
Cummins	KT38M, KTA38M, KTA50M	SENZA INGRANAGGIO	3049157, 3085649, 3897669	JPR - C3800	€ 3.230	IMP00260 3
Cummins	KT38M, KTA38M, KTA50M	CON INGRANAGGIO	3049157, 3085649, 3897669	JPR - C3800G	€ 3.326	IMP00260 3
Daedong				JPR - FU40	€ 398	8000-01
Daedong	DD6AC			JPR - FU50	€ 569	8201-01

JMP Pompe con Girante – Raffreddamento Motori



Marca Motore	Modello Motore	Codice Pompa Originale	Codice JMP	Promozione 2020	Codice Girante
Detroit Diesel	6V53, 6V71, 8V53	23501083, 23507971, 5107480, 5115396, 5186250	JPR - G6100	€ 595	8100-01
Detroit Diesel	271	5197221	JPR - G6010F	€ 479	7426-01
Detroit Diesel	353, 453, 471	5145576(17030), 5145577 (7260), 5145578 (17050)	JPR - G6000F	€ 370	7426-01
Detroit Diesel	6V71TI, 8V71, 12V71	23501769, 23507972, 5106016, 5122599, 8924265	JPR - G6200	€ 629	8301-01
Detroit Diesel	8V92TA, 16V92TA	23507475/6/7, 23507973, 8923363	JPR - G6300	€ 1.432	8300-01
Detroit Diesel	12V71TI, 12V92TA, 16V-149TA	18780, 8927296	JPR - G6400	€ 2.535	9001-01
Detroit Diesel	Series 60	23525078, 23522735	JPR - G6500	€ 1.930	9000-01



Doosan	Modello	Codice Pompa Originale	Codice JMP	Promozione	Codice Girante
Doosan	4V158TIL, 4V222TIL	400924-00001	JPR - D6505A	a richiesta	
Doosan	L034, L034TIH, L034TIM, DB33	65.06800-7004	JPR - D2500	a richiesta	7400-01
Doosan	4V158TI, 4V158TIM, 4V222TIH, 4V222TIM	65.06800-7007	JPR - D6505	a richiesta	IMP0021
Doosan	MD084, DB33, AD034, DB58TI, L066TI	60.06800-7058	JPR - D3200	a richiesta	7500-01
Doosan	MD136, MK150, MK190, MK230, L136	65.06800-7060C	JPR - D4005	a richiesta	8001-01
Doosan	L136T, L136TI, L086TI	65.06800-7005C	JPR - D4010	a richiesta	8001-01
Doosan	MD176, D2156HM, D2156MT, MD186T, D2366T	60.06800-7059	JPR - D4000	a richiesta	8002-01
Doosan			JPR - D4505	a richiesta	8001-01
Doosan			JPR - D4510	a richiesta	8001-01
Doosan	L126TIH, L196TIM, MD196T, MD196TI	65.06800-7006B	JPR - D5005	a richiesta	8201-01
Doosan	MK260, MK300 (old 196T)	60.06800-7062	JPR - D5000	a richiesta	8300-01
Doosan	4V222TIL	65.06800-7008	JPR - D2505	a richiesta	7400-01
Doosan	V158TIH, V158TIM, V158TIL, V180TI, V222TIH, V222TIM, V222TIL	65.06800-7063	JPR - D6500	a richiesta	IMP0021



Hyundai	Modello	Codice Pompa Originale	Codice JMP	Promozione	Codice Girante
Hyundai	M4D series		JPR - HME25	a richiesta	7426-01
Hyundai	M6D16 series		JPR - HME32	a richiesta	7526-01
Hyundai	H6D2TA		JPR - FU40	€ 397	8000-01
Hyundai	M6D30 series		JPR - HME40	a richiesta	8100-01
Hyundai	H6D7TA		JPR - FU50	€ 569	8201-01
Hyundai	M6D33, M6D35		JPR - HME50	a richiesta	8300-01



Hyundai Seasall	Modello	Codice Pompa Originale	Codice JMP	Promozione	Codice Girante
Hyundai Seasall	Seasall U125		JPR - HDS125	a richiesta	7306-01
Hyundai Seasall	Seasall D170, D150		JPR - HDS170	a richiesta	7526-01
Hyundai Seasall	Seasall S250, S220		JPR - HDS250	a richiesta	7556-01
Hyundai Seasall	Seasall H380		JPR - HDS400	a richiesta	8326-01
Hyundai Seasall	Seasall L500		JPR - HDS500	a richiesta	8326-01
Indmar	Pompa trascinata da albero motore		JPR - CP25UH	€ 154	7136-01



Sono disponibili kits di riparazione JMP originali.

e parti di ricambio anche per pompe

## JMP Pompe con Girante – Raffreddamento Motori

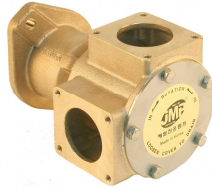
Marca Motore	Modello Motore	Codice Pompa Originale	Codice JMP	Promozione 2020	Codice Girante
John Deere	4039DFM01, 4045TFM01, 6068DFM01, 6068TFM01, 4045TFM75, 4045DFM70, 6068TFM75/TFM76, 6068SFM50, 6068TFM50, 4045DFM50, 4045TFM50	RE47016, RE503068, RE525263, RE535944	JPR - JD25UH	€ 364	7400-01
John Deere	6067AFM, 6067AFM30, 6125AFM01, 6081AFM01, 6081AFM75, 6081AFH75, 6081HFH70, 6068SFM50, 6068TFM50	RE45458, RE45459, RE515657, RE517226	JPR - S7619	€ 618	7608-01
John Deere	60868SFM50, RE515657		JPR - S7633	€ 630	7608-01
John Deere	6125A, 6125H		JPR - JD50LF	€ 720	8301-01
John Deere	6125AFM75, 6125SFM75, 6135SFM75, 6135AFM75	RE530689, RE536016, RE524510, RE530872	JPR - JD60IF	€ 1.020	8350-01



**JPR-JD25UH**



**JPR-S7633**



**JPR-JD50LF**



**JPR-S7619**



**JPR-JD60IF**

Kohler	Petrol 4 – 6.5 Kw	344371, GM46936	JPR - KL10IP	€ 199	7172-01
Kohler	Petrol 8 – 12.5 Kw / 4 and 6 cil.. Ford	246489, 344089, 267373	JPR - KL10IP2	€ 199	7172-01
Kohler	Kohler – John Deere		JPR - S7619	€ 617	7608-01
Lugger	L844D	NL-25-12057	JPR - NL10IP	€ 304	7100-01
Lugger	L944D	NL-25-11202	JPR - NL20IP	€ 399	7400-01
Lugger	L1064D, L1066D	NL-25-19522	JPR - JD25UH	€ 364	7400-01
Marine Power	Pompa trascinata da albero motore		JPR - CP 25UH	€ 154	7136-01



**JPR-CP25UH**



**JPR-KL10IP**



**JPR-KL10IP2**



**JPR-NL08IH**



**JPR-NL10IP**



**JPR-NL10IP2**



**JPR-NL20IP**

Mitsubishi	S6A, S6B, S6R, S6R2 – RAFFREDDAMENTO INCHIGLIA		JPR - ME5000	€ 1.031	IMP0062
Mitsubishi	S6A CON INGRANAGGIO GEA0010		JPR - ME5000A	€ 1.155	IMP0062
Mitsubishi	S6B CON INGRANAGGIO GEA0026		JPR - ME5000B	€ 1.155	IMP0062
Mitsubishi	S6R2 CON INGRANAGGIO GEA0019		JPR - ME5000R	€ 1.155	IMP0062
Mitsubishi	S12R CON INGRANAGGIO GEA0019		JPR - ME5000P	€ 1.110	IMP0062
Mitsubishi	S6A, S6B, S6R, S6R2	37553-28100	JPR - MD65LF	€ 1.127	9100-01
MTU	SERIES 60	23525078, 23522735	JPR - G6500	€ 1.928	9000-01
Northern Lights	M643, M643K, M643M, NL643, M673, M673D, M673L, M673L2, M673L3, M673LD2, M673LD3, NL673, NL673L, NL673L2, NL673L3	NL-25-12007	JPR - NL08IH	€ 234	7070-01
Northern Lights	M16C, M20CL, M20CR, M20CR2, M20CRW2, M753K, M753W, M753W2, NL753K, NL753W, NL753W2, M773LW2, M773LW3, NL773LW3, M843JK, M843NK, M843NW2, M843NW3, NL843JK, NL843NK, NL843NW2, NL843NW3, M844K, M844LK, M844K2, M844LK2, M844LW2, M844W2, NL844K, NL844LK, NL844K2, NL844LK2, NL844LW2, NL844W2, M854-20N	NL-25-12057	JPR - NL10IP	€ 304	7100-01
Northern Lights	M864K, M864W, M864W3, M964, M984K, M984W	NL-25-15405	JPR - NL10IP2	€ 315	7100-01
Northern Lights	M30CW, M38CR2, M944T, M944W, NL944D2, NL944T	NL-25-11202	JPR - NL20IP	€ 399	7400-01
Northern Lights	M1064A, M1064D, M1064H, M1064T, MP40C2, MP65C2, NL1064	NL-25-19522, NL-25-19501	JPR - JD25UH	€ 364	7400-01



**JPR-PK10IH**



**JPR-CT3054**



**JPR-SC50IF**

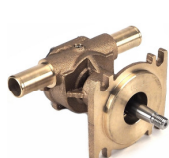


**JPR-MD65LF**

Perkins	Perama M20	14501730	JPR - PK10IH	€ 240	7001-01
Perkins	Perama M25, M30, M35, M35HD 20 (100 series: 103-06, 103-09, 103-10)	145016941	JPR - VP0010DB	€ 258	7051-01
Perkins	M92, M115Ti, M130C, M135, M185C, M215C, M225Ti, 370Ti, 1004, 1006	34449 (vecchio 33004)	JPR - CT3054	€ 577	7400-01
Scania	D8, DN9, DS9, D11M01, DN11, DS11, DSI11, DSI11M01, D14, DS14, DSI14	1785018	JPR - SC50IF	€ 843	8301-01
Scania	Gruppi Elettronici D13		JPR - SC50IF2	€ 980	8301-01
Vetus	M2.05, M2.06, M2D5, M3.09, M3.28, M4.15, M4.17	STM6109	JPR - VT08IH	€ 155	7070-01
Vetus	VH4.65, VH4.80	STM4522	JPR - VT10LH	€ 194	7100-01
Vetus	C4, CT4, C6, CT6	CT30195	JPR - C1025	€ 375	7300-01



**JPR-VP0010DA**



**JPR-VP0010DB**



**JPR-VP0020D**



**JPR-VP0030DA**



**JPR-VP0030DB**



**JPR-VP0040DA**



**JPR-VP0040DB**

**JMP Pompe con Giranti, Giranti, Parti di Ricambio di Alta Qualità**

## JMP Pompe con Girante – Raffreddamento Motori

Marca Motore	Modello Motore	Codice Pompa Originale	Codice JMP	Promozione 2020	Codice Girante
Volvo Penta	D1-13A, D1-13B, D1-13F, D1-20A, D1-20B, D1-20F, MD2010A, MD2010B, MD2010C, MD2010D, MD2020A, MD2020B, MD2020C, MD2020D	3593654	JPR - VP0010DA	€ 265	7051-01
Volvo Penta	D1-30A, D1-30B, D1-30F, D2-40A, D2-40B, D2-40F, MD2030A, MD2030B, MD2030C, MD2030D, MD2040A, MD2040B, MD2040C, MD2040D	3593655	JPR - VP0010DB	€ 258	7051-01
Volvo Penta	D2-55A, D2-55B, D2-55C, D2-55D, D2-55E, D2-55F, D2-75A, D2-75B, D2-75C, D2-75F	3583089	JPR - VP0020D	€ 281	7100-01
Volvo Penta	D3-110I-A, D3-110I-B, D3-110I-C, D3-130A-A, D3-130A-B, D3-130I-A, D3-130I-B, D3-130A-C, D3-130I-C, D3-160A-A, D3-160A-B, D3-160I-B, D3-160A-C, D3-160I-A, D3-160I-C, D3-190A-B, D3-190A-C, D3-190I-B, D3-190I-C	21141637 (Vecchio 3884694)	JPR - VP0030DA	€ 288	7136-01
Volvo Penta	D3-110I-D, D3-110I-E, D3-110I-F, D3-140I-E, D3-140I-F, D3-140A-D, D3-140A-E, D3-140A-F, D3-150I-D, D3-150I-E, D3-150I-F, D3-170I-D, D3-170I-E, D3-170I-F, D3-170A-D, D3-170A-E, D3-170A-F, D3-200I-D, D3-200I-E, D3-200I-F, D3-200A-D, D3-200A-E, D3-200A-F, D3-220I-D, D3-220I-E, D3-220I-F, D3-220A-D, D3-220A-E, D3-220A-F	21379102	JPR - VP0030DB	€ 304	7136-01
Volvo Penta	D4-180I-B, D4-180I-C, D4-180I-D, D4-180I-E, D4-210A-A, D4-225A-B, D4-210I-A, D4-210I-B, D4-225I-B, D4-225A-C, D4-225A-D, D4-225I-C, D4-225I-D, D4-260A-A, D4-260A-B, D4-260A-C, D4-260A-D, D4-260D-B, D4-260D-C, D4-260D-D, D4-260I-A, D4-260I-B, D4-260I-C, D4-260I-D, D4-300A-A, D4-300A-C, D4-300A-D, D4-300D-A, D4-300D-C, D4-300I-A, D4-300I-C, D4-300I-D, D4-225A-E, D4-225I-E,	3584062	JPR-VP0040DA	€ 434	7426-01
Volvo Penta	D4-225A-E, D4-260A-E, D4-260D-E, D4-300A-E, D4-300D-E	21419374	JPR - VP0040DB	€ 422	7400-01



**JPR-VP0050D**



**JPR-VP0060DA**



**JPR-VP0060DB**



**JPR-VP0090D & JPR-VP0110DA**



**JPR-VP0110DB**



**JPR-VP0120D**

Volvo Penta	D5A-T, D5A-TA, D5A-BTA, D7A-T, D7A-TA, D7A-BTA, D7C-TA, D7C-BTA	3838288	JPR - VP0050D	€ 358	7400-01
Volvo Penta	D6-300A-F, D6-300D-F (MC), D6-300I-F, D6-330A-F, D6-330D-F, D6-330I-F, D6-370A-F, D6-370D-F, D6-370I-F, D6-400A-F, D6-435D-F, D6-435I-SC-F, D6-435I-TC-F, D6-435I-WJ-F	21380890 . (Vecchio 3589907)	JPR - VP0060DA	€ 413	7446-01
Volvo Penta	D6-300A-F, D6-300D-F (MC), D6-300I-F, D6-330A-F, D6-330D-F, D6-330I-F, D6-370A-F, D6-370D-F, D6-370I-F, D6-400A-F, D6-435D-F, D6-435I-SC-F, D6-435I-TC-F, D6-435I-WJ-F	21419376	JPR - VP0060DB	€ 516	7376-01
Volvo Penta	D9A2A, D9-425, D9A2A, D9-500(R4), D9A2A, D9-575, D9A2B, D9-425, D9A2B, D9-500(R5), D9A2B, D9A-MH, D9A2B, D9A-575, D9A2B MH, D9A2C, D9A2D, D9A2E, D9A2F, D9A2G, D9A2H, D9A2J, D9A2K, D9A2A D9A-MG, D9A2A MG, D11A-A, D11A-B, D11A-C, D11A-D, D11A-C (IPS), D11A-D (IPS), D11A-E, D11A-E (IPS)	21380886 . (Vecchio 3819485)	JPR - VP0090D	€ 912	7446-01
Volvo Penta	D11B1-A MP, D11B2-A MP (IPS), D11A-A, D11A-B, D11A-C, D11A-D, D11A-C (IPS), D11A-D (IPS), D11A-E, D11A-E (IPS)	21219723	JPR - VP0110DA	€ 935	8000-01
Volvo Penta	D11B1-A MP, D11B2-A MP (IPS)	22063494	JPR - VP0110DB	€ 900	7446-01
Volvo Penta	D12D-A MH, D12D-B MH, D12D-C MH, D12C-A MP, D12D-A MP, D12D-B MP, D12D-C MP, D12D-D MP, D12D-E MP, D12D-F MP, D12D-G MP, D12D-H MP, D12D-C MH, D12D-E MH, D12D-G MH	3838207, 865295	JPR - VP0120D	€ 1.302	8326-01



**JPR-VP0130D**



**JPR-VP0160D**



**JPR-V1000**



**JPR-V2000**



**JPR-V3000**



**JPR-V5000**



**JPR-WB08IP**

Volvo Penta	D13B-E/N MH, D13C1/2/3/4-A MP, D13B-A/B/C/D/G/H/J/K/L/M MP	3886848	JPR - VP0130D	€ 1.572	8326-01
Volvo Penta	D16C-A MH, D16C-B MH, D16C-C MH	3589104	JPR - VP0160D	€ 1.049	8326-01
Volvo Penta	AD31, AD41, MD31, KAD32P-A, KAD42A, KAD42B, KAMD42A, KAMD42B, TAMD42B, TAMD42WJ-A, KAD43P-A, KAMD43P, KAMD43P-A, KAD44P-A, KAD44P-B, KAD44P-C, KAMD44P-A, KAMD44P-C	3583115 (Vecchi. 3581558, 860629)	JPR - V1000	€ 331	7400-01
Volvo Penta	TAMD61, TAMD71, MD100, MD100A, TAMD102A, TAMD102D, TAMD103A, MD120, MD120A, TMD 100, TMD100A, TMD120 TMD120A, TMD121C, TMD122A, TAMD120, TAMD120A, TAMD121C, TAMD122A, TAMD122P	3829311	JPR - V2000	€ 707	8100-01
Volvo Penta	TAMD120A, TAMD122A, TAMD120B, TAMD122C, TAMD122D(3583112), TAMD122P (3829313)	3829312, 3829313	JPR - V3000	€ 878	8301-01
Volvo Penta	TAMD162, TAMD163, TAMD165	3837935	JPR - V5000	€ 1.049	8301-01
Volvo Penta	D25A-MT, D25A-MS, D30A-MT, D30A-MS	3835188	JPR - MD65LF	€ 1.128	9100-01
Westerbeke	4.0BCD, 4.4BCD, 4.4WMD, 6.0BCD, 7.7WMD, 8.0WMD, 11.0WMD	WB37431, WB48080	JPR - WB08IP	€ 320	7050-01

**JMP Pompe con Girante – Raffreddamento Motori  
VOLVO PENTA a Benzina**



**JPR-CP25UH**



**JPR-VP2800G**



**JPR-VP4596G**



**JPR-VP4599G**



**JPR-VP4601G**



**JPR-VP5090G**

Marca Motore	Modello Motore	Codice Pompa Originale	Codice JMP	Promozione 2020	Codice Girante
Volvo Penta	V-6, V8, 430B, 431A, 431B, BB231A, 500A, 500B, 501A, 501B, 570A, 571A, 572A, 740A, 740B, AQ200C, AQ200D, AQ200F, AQ211A, AQ225D, AQ225E, AQ225F, BB225A, BB225AV, BB225B, BB225C, AQ230B, AQ231A, AQ231B, BB231B, AQ255A, AQ255B, BB255AV, BB260A, BB260AV, BB260B, BB261A, AQ271A, AQ271B, AQ271C, AQ271D, AQ290A, AQ311A	855722, 856957, 857451	JPR – CP25UH	€ 154	7136-01
Volvo Penta	4.3GLPWT, 4.3GIPWT, 4.3GLPEF, 4.3GLP-A, 4.3GLP-B, 4.3GLPC, 4.3GLPD, 4.3GL-E, 4.3GL-EF, 5.0Gi, 5.7GSIPT, 5.0GLPWT, 5.7GSPWT, 5.0GLPEF, 5.7GSPEF, 5.0GL-A, 5.7GL-A, 5.0GL-B, 5.7GLB, 5.0GL-C,-D,-E, 5.7GL-C,-D,-E	21214596 (Vecchio 3862487)	JPR-VP4596G	€ 270	7100-01
Volvo Penta	5.0Gi, 5.0GXi-A, 5.0GXi-B, 5.0OSi-B, 5.0OSi-BF, 5.0GXi-C,-D, 5.0OSi-C,-D, 5.0Xi-CF,-DF, 5.0OSi-CF,-DF, 5.0GXi-E, 5.0OSi-E, 5.0GXi-EF, 5.0OSi-EF, 5.7OSXi-B,-C, 5.7Gi-CF,-DF, 5.7OSi-BF,-CF, 5.7GXi-DF,-EF, 5.7GXi-DF,-EF, 5.7OSXi-BF,-CF, 5.7GSiPEFS, 5.7Gi-A, 5.7GXi-A, 5.7GXi-B5.0GXi-BF, 5.7GXi-C, 5.7OSXi-A, 5.7Gi-BF, 5.7OSi-AF, 5.7GXi-CF, 5.7OSXi-AF, 5.7Gi-C,-D, 5.7OSi-B,-C, 5.7GXi-D,-E	21214599 (Vecchi: 3858230, 3812698)	JPR-VP4599G	€ 270	7100-01
Volvo Penta	8.1Gi-A, 8.1Gi-B, 8.1Gi-BF, 8.1Gi-C, 8.1Gi-CF, 8.1Gi-D, 8.1Gi-DF, 8.1Gi-A, 8.1GXi-A, 8.1GXi-AF, 8.1GXi-B, 8.1GXi-BF, 8.1GXi-C, 8.1GXi-CF, 8.1Giil-A, 8.1Giil-B, 8.1Giil-C, 8.1Giil-D8.1GSiil-A, 8.1GXiil-A, 8.1GXiil-B, 8.1GXiil-C, DPX375-A, DPX375-B, DPX375-BF, DPX375-CF, DPX420-A, DPX420-B, DPX420-BF, DPX420-CF	21214601 (Vecchi: 3860795, 3862484, 3812695)	JPR-VP4601G	€ 275	7100-01
Volvo Penta	4.3GXIE-M, 4.3GL-P, 4.3GXi-P, 4.3GXi-Q, 4.3GXIE-P, 4.3GXIE-Q, 5.0GXIC-P, 5.7GiC-300-P, 5.7GXIC-P, 5.0GXICE-P, 5.7GiCE-300-P, 5.7GXICE-P, 5.0GXIE-P, 5.7GiE-300-P, 5.7GXIE-P, 5.0GXi-P, 5.7Gi-300-P, 5.7GXi-P, 4.3GXi-225-R, 4.3Gi-200-R, 5.0GXi-270-R, 5.7Gi-300-R, 5.7GXi-320-R, 4.3GXIE-225-R, 5.0GXIE-270-R, 5.7GiE-300-R, 5.7GXIE-320-R, 5.0GXIC-270-R, 5.0GiC-225-S, 5.7GiC-300-R, 5.7GXIC-320-R, 5.0GXICE-270-R, 5.0GXIE-225-S, 5.7GiCE-300-R, 5.7GXICE-320-R, V6-200-A, V6-225-A, V8-270-A, V8-300-A, V8-320-A, V8-225-E-A, V8-270-E-A, V8-300-E-A, V8-320-E-A, V8-270-C-A, V8-225-C-A, V8-300-C-A, V8-320-C-A, V8-270-CE-A, V8-225-CE-A, V8-300-CE-A, V8-320-CE-A, V8-270-E-B, V8-300-E-B, V8-320-E-B, V8-270-C-B, V8-270-B, V8-225-C-B, V8-300-C-B, V8-320-C-B, V8-270-CE-B, V8-225-CE-B, V8-300-CE-B, V8-320-CE-B, 4.3GXi-F, 4.3GXi-FF, 4.3OSi-F, 4.3OSi-FF, 5.0GXi-F, 5.0GXi-FF, 5.0OSi-F, 5.0OSi-FF, 5.7Gi-F, 5.7Gi-FF, 5.7GXi-G, 5.7GXi-GF, 5.7OSi-E, 5.7OSi-EF, 5.7OSXi-E, 5.7OSXi-EF, 5.7Giil-F, 5.7GXiil-G, 4.3GL-G, 4.3GL-GF, 4.3GL-J, 4.3GL-JF, 4.3GXi-G, 4.3GXi-GF, 4.3OSi-G, 4.3OSi-GF, 5.0GXi-G, 5.0GXi-GF, 5.0OSi-G, 5.0OSi-GF, 5.0GXi-G, 5.0GXi-GF, 5.0OSi-G, 5.0OSi-GF, 5.7Gi-G, 5.7Gi-GF, 5.7GXi-H, 5.7GXi-HF, 5.7OSi-G, 5.7OSi-GF, 5.7OSXi-G, 5.7OSXi-GF, 5.7Giil-G, 5.7GXiil-H, 4.3GXi-J, 4.3GXi-JF, 4.3OSi-J, 4.3OSi-JF, 5.0GL-J, 5.0GL-JF, 5.0GXi-J, 5.0GXi-JF, 5.0OSi-J, 5.0OSi-JF, 5.0GXi-N, 5.7Gi-300-J, 5.7Gi-300-JF, 5.7OSi-300-J, 5.7OSi-300-JF, 5.7GXi-J, 5.7GXi-JF, 5.7OSXi-J, 5.7OSXi-JF, 5.7Gi-300-N, 5.7GXi-N, 5.0GXIE-JF, 5.0GXIE-J, 5.0OSiE-J, 5.0OSiE-J, 5.0GXIE-K, 5.0GXIE-KF, 5.0GXIE-M, 5.0GXIE-MF, 5.0GXIE-N, 5.7GiE-300-J, 5.7GiE-300-JF, 5.7GXIE-J, 5.7GXIE-JF, 5.7OSiE-300-J, 5.7OSiE-300-JF, 5.7OSXiE-J, 5.7OSXiE-JF, 5.7GiE-300-K, 5.7GiE-300-KF, 5.7GXIE-K, 5.7GXIE-KF, 5.7GiE-300-M, 5.7GiE-300-MF, 5.7GXIE-M, 5.7GXIE-MF, 5.7GXIE-N, 5.7GiE-300-N, 5.0GXi-C, 5.0GXi-CF, 5.0Gi-C, 5.0Gi-CF, 5.7GiC-300-J, 5.7GiC-300-JF, 5.7GXi-C, 5.7GXi-CF, 5.7GXi-CF, 5.0GXICE-J, 5.0GXICE-JF, 5.0GXICE-M, 5.0GXICE-MF, 5.0GiC-J, 5.0GiC-JF, 5.0GiC-M, 5.0GiC-MF, 5.7GiC-300-J, 5.7GiC-300-JF, 5.7GXICE-J, 5.7GXICE-JF, 5.7GiC-300-M, 5.7GiC-300-MF, 5.7GXICE-M, 5.7GXICE-MF	21212799	JPR-VP2799G	€ 278	7136-01
Volvo Penta	8.1GiE-P, 8.1GXIE-P, 8.1GiCE-P, 8.1GiCE-Q, 8.1IPSCE-PF, 8.1IPSCE-Q, 8.1IPSCE-P, 8.1Gi-G, 8.1Gi-GF, 8.1GXi-F, 8.1GXi-FF, 8.1OSi-C, 8.1OSi-CF, 8.1Giil-G, 8.1GXiil-F, 8.1Gi-H, 8.1Gi-HF, 8.1GXi-G, 8.1GXi-GF, 8.1OSi-D, 8.1OSi-DF, 8.1Giil-H, 8.1GXiil-G, 8.1IPSCE-JF, 8.1IPSCE-MF, 8.1Gi-J, 8.1Gi-JF, 8.1OSi-J, 8.1OSi-JF, 8.1GXi-J, 8.1GXi-JF, 8.1GiE-JF, 8.1GiE-J, 8.1OSiE-JF, 8.1OSiE-J, 8.1GXIE-JF, 8.1GXIE-J, 8.1GiE-K, 8.1GiE-KF, 8.1GXIE-K, 8.1GXIE-KF, 8.1GiE-M, 8.1GiE-MF, 8.1GXIE-M, 8.1GXIE-MF, 8.1GXi-MF, 8.1IPSE-JF, 8.1GiC-400-J, 8.1GiC-400-JF, 8.1GiC-400-Q, 8.1GiC-E, 8.1GiC-EF, 8.1GiC-E	2121800	JPR-VP2800G	€ 248	7136-01
Volvo Penta	4.3GL-E, 4.3GL-EF5.0L-F, 5.0GL-FF	22307636	JPR-VP5090G	€ 275	7136-01



### JMP Pompe con Girante – Raffreddamento Motori

Marca Motore	Modello Motore	Codice Pompa Originale	Codice JMP	Promozione 2020	Codice Girante
Yanmar	2GM20F, 3GM30F, 2YM, 3YM, 2GM20, 3GM30	128397-42500	JPR - YM08IH	€ 175	7051-01
Yanmar	4JH3-THE, 4JH3-DTE, 4JH3E, 4JH3CE, 4JH3CE1, 4JH3-TE, 4JH3-TCE, 3JH3E, 3JH3E(EPA), 3JH3CE, 4JH3-TE-YEU, 4JH3-DTE(YEU), 3JH3E-YEU-E, 4JH4-TE, 4JH4-THE, 4JH4-HTE1	129670-42513	JPR - YM04JHA	€ 381	7100-01
Yanmar	4JH5E, 3JH4E, 4JH4E, 4JH4AE, 3JH5E, 4JH45, 4JH57, 4JH80, 4JH110	129271-42502	JPR - YM04JHB	€ 328	7100-01
Yanmar	6LP(A)-DTE(P), 6LP(A)-STE(P), 6LPA-STP2	119773-42652	JPR - YM06LPB	€ 403	7136-01



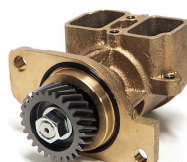
**JPR-YM08IH**



**JPR-YM04JHA**



**JPR-YM04JHB**



**JPR-YM06LPB**



**JPR-YM06LY2**



**JPR-YM06LY3**

Yanmar	6LY2-ST, 6LY2-STVY, 6LY2-WST, 6LY2-WDT, 6LY2-WDTZY, 6LY2M-WDT, 6LY2M-WST, 6LYA-STP, 6LYA-STE, 6LYA-UTE, 6LY2-STE, 6LY2A-STP, 6LY2A-UTP	119574-42502	JPR - YM06LY2	€ 748	7376-01
Yanmar	6LY3-ETP, 6LY3-STP, 6LY3-UTP, 6LY3-STC, 6LY3-UTC, 6LY3-ETP 24, 6LY3-STP 24, 6LY3-UTP 24, 6LY3-STC	119578-42501	JPR - YM06LY3	€ 614	7376-01
Yanmar	6LP(A)-DTE(P), 6LP(A)-STE(P), 6LPA-STP2	119773-42502	JPR - YM06LPA	€ 593	7136-01
Yanmar	6SY-STP720, 8SY-STP900	165000-36440	JPR - SC50IF	€ 843	8301-01



**JPR-YM06LPA**



**JPR-SC50IF**

Le pompe con giranti **JMP** garantiscono materiali di elevata qualità e giranti di lunga durata e vengono assemblate con tenute meccaniche e cuscinetti qualitativamente eccellenti.

*I prezzi si intendono per merce resa franco nostro magazzino, I.V.A. esclusa.  
Prezzi e specifiche soggetti a modifiche senza preavviso.*