

# T-fal®

## POP CORN POPPER

EN  
ES



**Instructions for use**  
**Instrucciones de uso**

# READ AND SAVE THESE INSTRUCTIONS

**WARNING:** A risk of fire and electrical shock exists in all electrical appliances and may cause personal injury or death. Please follow all safety instructions.

## IMPORTANT SAFEGUARDS

When using electric appliances, basic safety precautions should always be followed, including the following:

1. Read all instructions before using the appliance.
2. Do not touch hot surfaces. Cover will become hot during popping.
  3. To protect against electric shock, do not immerse cord, plug, or appliance base in water or other liquid.  
See instructions for cleaning.
4. This appliance is not for use by children. Close supervision is necessary when any appliance is used near children.
5. Unplug from outlet when not in use. Unplug and allow to cool before putting on or taking off parts, and before cleaning.
6. Do not operate any damaged appliance. Do not operate with a damaged cord or plug or after the appliance malfunctions or has been dropped or damaged in any manner. Contact Consumer Service for return authorization, examination, repair or electrical or mechanical adjustment.
7. The use of accessory attachments not recommended by the appliance manufacturer may cause injuries.
8. Do not use outdoors or while standing in a damp area.
9. Do not let cord hang over edge of table or counter or touch hot surfaces.
10. Do not place on or near a hot gas or electric burner or in a heated oven.
11. Do not use appliance other than for intended in these instructions.
12. Check that the electrical installation is compatible with the wattage and voltage stated on the bottom of the appliance.
13. If this appliance has a polarized plug (one blade is wider than the other), it is to reduce the risk of electric shock, this plug is intended to fit into a polarized outlet only one way. If the plug does not fit fully into the outlet, reverse the plug. If it still does not fit, contact a qualified electrician. Do not attempt to modify the plug in any way.
14. To disconnect, switch off, then remove plug from wall outlet.
15. The temperature of accessible surfaces may be hot when the appliance is operating.
16. The appliance is only to be operated in the closed position with measuring cup and cover in correct position.
17. Cover must be in place before plugging appliance in.
18. This appliance pops with hot air. Do not place oil, shortening, butter or margarine in the popping chamber. Use of these substances will damage the unit and may result in injury.
19. Do not use pre-packaged popcorn kernels containing salt or oil as they will damage the appliance.

20. Do not leave appliance unattended while in use.
21. This appliance will not shut off automatically. To avoid overheating add corn before operating.
22. Extreme caution must be used when unloading popcorn.

# SAVE THESE INSTRUCTIONS.

## Safety instructions

- To prevent the appliance from overheating, do not place it in a corner or against a wall.
- Never leave the appliance plugged in when not in use.
- Never leave the appliance unattended when plugged in,
- Never place the appliance directly on a fragile surface (glass table, tablecloth, varnished furniture, etc.) or on a soft surface such as a dish-towel.
- If you have any problems, contact the authorized after-sales service center or the internet address [www.t-falusa.com](http://www.t-falusa.com)

EN

## Short Cord instructions

**CAUTION:** A short power-supply cord (or detachable power-supply cord) is provided to reduce the risk of personal injury resulting from becoming entangled in or tripping over a longer cord.

Extension cords are available from local hardware stores and may be used if care is exercised in their use.

If an extension cord is required, special care and caution is necessary.

Also the cord must be :

- 1) marked with an electrical rating of 125V, and at least 13 A., 1625 W.
- 2) the cord must be arranged so that it will not drape over the countertop or tabletop where it can be pulled on by children or tripped over accidentally.

**POLARIZED PLUG :** This appliance has a polarized plug,(one blade is wider than the other). As a safety feature to reduce the risk of electrical shock, this plug is intended to fit in a polarized outlet only one way. If the plug does not fully in the outlet, reverse the plug. If it still does not fit, contact a qualified electrician. Do not attempt to defeat this safety feature.

**ELECTRIC POWER :** If electric circuit is overloaded with other appliances, your appliance may not operate properly. It should be operated on a separate electric circuit from other appliances.

**THIS APPLIANCE IS FOR HOUSEHOLD USE ONLY.**

**Thank you for buying this appliance. Read the instructions in this leaflet carefully and keep them within reach. Any commercial use, inappropriate use or failure to comply with the instructions, the manufacturer accepts no responsibility and the guarantee will not apply.**

- For your safety, this product conforms to all applicable standards and regulations (Electric Safety, Food Compliant Materials, Environment, ...).
- Our company has an ongoing policy of research and development and may modify these products without prior notice.
- Only use parts or accessories provided with the appliance or bought from an Approved Service Center. Do not use them for other appliances or intention.
- To avoid spoiling your product, do not use flambé recipes in connection with it at any time.
- This appliance is not intended to be used in the following applications, and the guarantee will not apply for:
  - staff kitchen areas in shops, offices and other working environments;
  - farm houses;
  - by clients in hotels, motels and other residential type environments;
  - bed and breakfast type environments.
- This appliance is not intended to be operated by means of an external timer or separate remote-control system.
- If an accident occurs, rinse the burn immediately with cold water and call a doctor if necessary.
- On first use, there may be a slight odor and a little smoke during the first few minutes. In these cases open the window and wait until there is no more smoke or odor.

EN

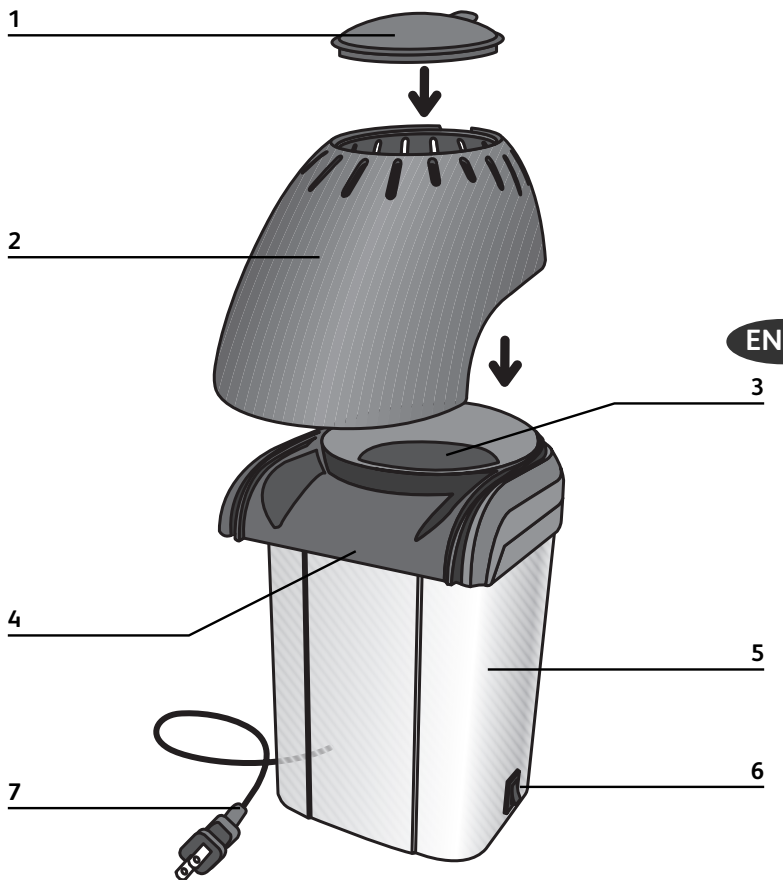
## Prevention of accidents at home

- This appliance is not intended for use by persons (including children) with reduced physical, sensory or mental capabilities, or lack of experience and knowledge, unless they have been given supervision or instruction concerning use of the appliance by an adult responsible for their safety. Children should be supervised to ensure that they do not play with the appliance.
- Accessible surface temperatures can be high when the appliance is operating. Never touch the hot surfaces of the appliance.
- Cooking fumes may be dangerous for animals which have a particularly sensitive respiratory system, such as birds. We advise bird owners to keep them away from the cooking area.
- Do not add other ingredients (oil, sugar, etc.....).
- Never use the appliance without its lid and without the measuring spoon.
- Never switch ON the appliance if the popping chamber is empty.



### Environment protection first!

- ① Your appliance contains valuable materials which can be recovered or recycled.
- ➡ Leave it at a local civic waste collection point.

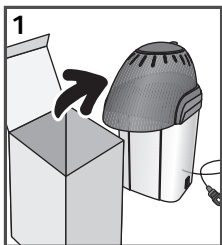


## Description

- |                               |                  |
|-------------------------------|------------------|
| 1. Measuring spoon, top cover | 5. Popper base   |
| 2. Cover                      | 6. ON/OFF switch |
| 3. Popping chamber            | 7. Cord          |
| 4. Chute                      |                  |

When ordering replacement parts, please specify unit model number stamped on base of popper.

## 1 - Setting



- 1 Remove any packaging, stickers or accessories inside and outside the appliance.

Keep all packaging, accessories, stickers and plastic bags out of children's reach.

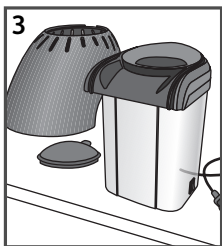
EN



- 2 Before using for the first time, wash the popper cover and measuring spoon in warm soapy water, rinse and dry thoroughly.

Wipe the popper base with a damp cloth.

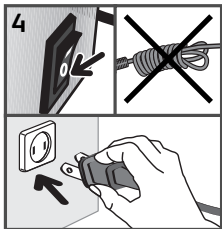
**Never immerse base and power cord in water or other liquid.**



- 3 Place the appliance on a flat, stable; heat-resistant surface.

To keep the appliance from overheating, do not place it in a corner or against a wall.

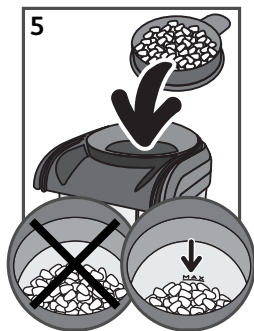
**Never use the appliance without its lid and without the measuring spoon.**



- 4 Completely unwind the power cord.

Switch off the appliance (position 0), then plug the appliance.

## 2 - Making pop corn



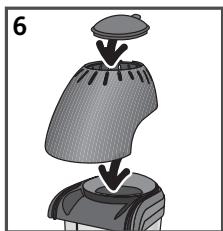
- 5 Pour the correct amount of corn kernels into the appliance using one measuring spoon per batch and not exceeding the maximum level registered on the popping chamber.

**Only use popping corn not microwave popcorn.**

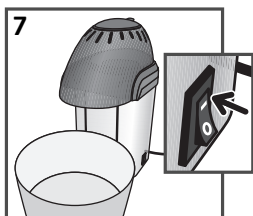
**Important:** never fill the popping chamber past the fill line as this could result in overheating, smoking, scorched corn, and may cause the unit to shut off.

**Never run the appliance when empty.  
Do not add other ingredients (oil, sugar, etc.) inside the popping chamber.**

EN



- 6 Put the lid on the appliance and the measuring spoon on the top of the lid.

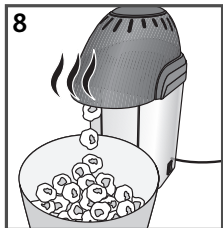


- 7 Place a large heat-resistant bowl under the appliance's pouring spout to hold the popcorn.

**Ensure that the lid and spoon are correctly Positioned.**

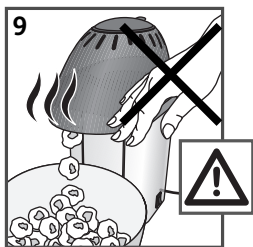
Set the switch to position 1.

On first use, there may be a slight odor and a little smoke during the first few minutes; this is normal and will quickly disappear.

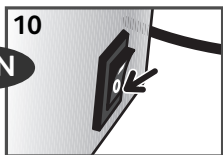


After a few minutes, the corn will finish popping.

- 8 **Caution: the appliance releases hot air when in use.**

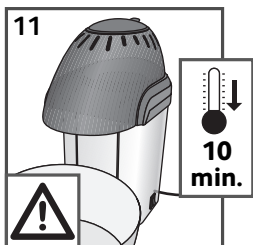


- 9 Do not touch the spoon, the lid and body of the appliance as they can become very hot when in use.

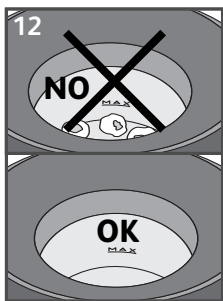


- 10 After 5 minutes maximum, switch off the appliance (position 0)

**The appliance is hot after use: handle with care.**



- 11 Before continuing:  
Let the appliance cool down for at least 10 minutes after each popping.

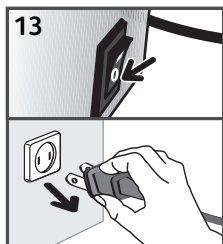


- 12 A few unpoped kernels of corn or popped corn may remain inside the appliance.  
Be sure to remove these kernels or popped corn after each use.

**Caution: do not run the appliance for more than 5 minutes at a time.**



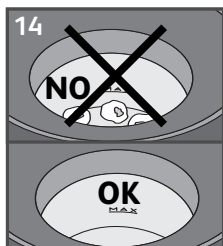
### 3 - After use



**13** Switch off the appliance (position 0).

Unplug the cord from the electrical outlet.

Allow the appliance to cool for at least 2 hours.

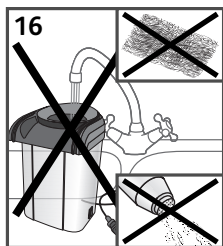


**14** Remove any unpopped kernels of corn from the appliance.

EN



**15** Clean the lid, the measuring spoon and the body of the appliance with a sponge dampened with hot water and dishwashing liquid.



**16** Do not use steel wool or scouring powder.

Never submerge the appliance's base and cord in water.

This appliance is not dishwasher safe.

## 4 - Caramel corn recipe

---

For 2 servings

- 1 portion of popping corn
- 1 tablespoons unsalted butter
- 3 tablespoons sugar

Pop the popcorn in the machine.

Heat the butter in a non stick saucepan on a medium heat.

Once the butter has melted, add the sugar and melt on a medium heat to form caramel (caution, it forms fast!).

Once the caramel has formed, lower the heat and pour the popcorn in, stirring vigorously (all the kernels should be coated).

**EN** Pour into a bowl and serve.

# MANUFACTURER'S WARRANTY

 : [www.t-falusa.com](http://www.t-falusa.com)

*With a strong commitment to the environment, most of T-fal products are repairable during and after the warranty period. Before returning any defective products to the point of purchase, please call T-fal consumer service directly at the phone number below for repair options. Your help to sustain the environment is appreciated!*

## The Warranty

This product is guaranteed by T-fal for 1 year against any manufacturing defect in materials or workmanship, starting from the initial date of purchase. The manufacturer's warranty by T-fal is an extra benefit which does not affect consumer's Statutory Rights.

The T-fal warranty covers all costs related to restoring the proven defective product so that it conforms to its original specifications, through the repair or replacement of any defective part and the necessary labor. At T-fal's choice, a replacement product may be provided instead of repairing a defective product. T-fal's sole obligation and your exclusive resolution under this warranty are limited to such repair or replacement.

## Conditions & Exclusions

The T-fal warranty only applies within USA, Canada & Mexico, and is valid only on presentation of a proof of purchase. The product can be taken directly in person to an authorized service center or must be adequately packaged and returned, by recorded delivery (or equivalent method of postage), to a T-fal authorized service center. Full address details for each country's authorized service center are listed on the T-fal website ([www.tefal.com](http://www.tefal.com)) or by calling the appropriate telephone number listed below to request the appropriate postal address.

T-fal shall not be obligated to repair or replace any product which is not accompanied by a valid proof of purchase.

This warranty will not cover any damage which could occur as a result of misuse, negligence, failure to follow T-fal instructions, use on current or voltage other than as stamped on the product, or a modification or unauthorized repair of the product. It also does not cover normal tear and wear, maintenance or replacement of consumable parts, and the following:

- using the wrong type of water or consumable
- scaling (any de-scaling must be carried out according to the instructions for use);
- ingress of water, dust or insects into the product;
- mechanical damages, overloading
- damages or bad results due to wrong voltage or frequency
- accidents including fire, flood, lightning, etc
- professional or commercial use
- damage to any glass or porcelain ware in the product

This warranty does not apply to any product that has been tampered with, or to damages incurred through improper use and care, faulty packaging by the owner or mishandling by any carrier.

The T-fal manufacturer's warranty applies only for products purchased and used in USA, Canada & Mexico. Where a product purchased in one country and then used in another one:

- The T-fal guarantee duration is the one in the country of usage of the product, even if the product was purchased in another listed country with different guarantee duration.
- The T-fal guarantee does not apply in case of non conformity of the purchased product with the local standards, such as voltage, frequency, power plugs, or other local technical specifications
- The repair process for products purchased outside the country of use may require a longer time if the product is not locally sold by T-fal
- In cases where the product is not repairable in the new country, the T-fal guarantee is limited to a replacement by a similar product or an alternative product at similar cost, where possible.

## Consumer Statutory Rights

This T-fal manufacturer's warranty does not affect the statutory rights a consumer may have or those rights that cannot be excluded or limited, nor rights against the retailer from which the consumer purchased the product. This warranty gives a consumer specific legal rights, and the consumer may also have other legal rights which vary from State to State or Country to Country or Province to Province. The consumer may assert any such rights at his sole discretion.

## Additional information

Accessories, Consumables and end-user replaceable parts can be purchased, if locally available, as described in T-fal internet site.

USA	GROUPE SEB USA 2121 Eden Road Millville, NJ 08332
	800-395-8325

T-fal is a registered trademark of Groupe SEB

 : [www.t-falusa.com](http://www.t-falusa.com)

**EN** 2 - 11

**ES** 12 - 20