



**Asia-Pacific
Economic Cooperation**

2014/SOM3/CTI/SEM1/004

Session 2

Port Klang Net

Submitted by: Malaysia



**Seminar on APEC Model E-Ports
Beijing, China
12 August 2014**

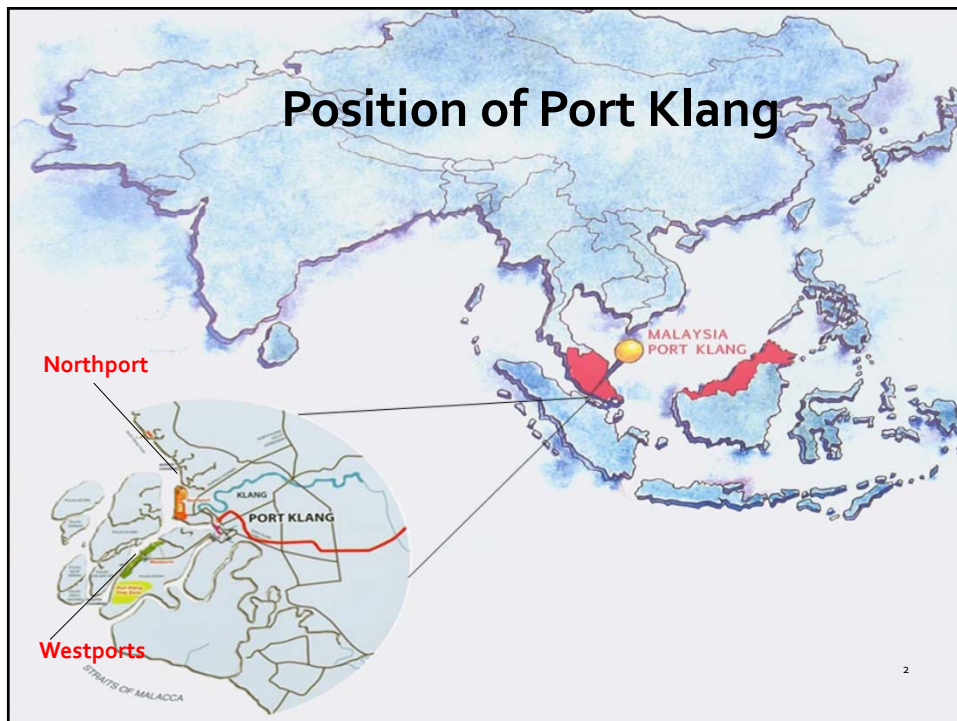


PORT KLANG NET @ APEC 2014

DATE : 12 AUGUST 2014

VENUE : BEIJING HOTEL

1



PORT KLANG STATISTIC

- 2013 = 10,350,409 mil TEUs
- Target 2014 = 10.9 mil TEUs
- Port Klang is ranked 12th container port in 2013

3

PORT KLANG NET-BACKGROUND

- Port Klang Net – evolved from Port Klang Community System (PKCS) implemented in 1995.
- PKCS – traditional EDI based.
- Key stakeholders wanted a dynamic electronic system in Port Klang.
- Port Klang Net was mooted during various meetings held between Port Klang Authority and the industries players at Port Klang – started in May 2010

4

BACKGROUND (CONT.)

- To stay competitive, it is a strategic for Port Klang Authority to establish a port and trade focused community system at Port Klang linking key industry players under common platform.
- This initiative is in response to the changes in the use of the state-of-the-art port facilities and technologies and in increasing logistics competitiveness amongst the ports and logistic players in Malaysia and in surrounding regions.

5

BACKGROUND (CONT.)

- Port Klang Net was endorsed and mandated by Ministry of Transport (2011) for the establishment and implementation of Port Klang Net and to further extend the implementation to all other Federal Ports in Malaysia.
- Public Private Participation (PPP) model

6

WHAT IS PORT KLANG NET ?

1. Port Klang Net is a Community Cloud Computing System.
2. Promotes standardisation in procedures, datasets & process flows.
3. Empowering players in the Logistics Chain to value add in their respective roles by allowing dynamic collaboration among themselves in the community.

7

WHAT IS PORT KLANG NET ? (CONT.)

4. Data is retained and reused along all stages in the LOGISTICS CHAIN without having to re-key.
5. Allows Business Process Re-engineering in the various processes – thus saving many manual steps which is resource hogging.
6. Security Management is extensive via audit and event logging.

8

WHAT IS PORT KLANG NET? (CONT.)

7. Rapid & automated exchange of data between various computer systems via common message gateways & data sets.
8. Assist Other Government Agencies (OGAs) to harmonise any gap experience by any party.
9. 100% community-centric and managed.

9

PORT KLANG NET PLAYERS

Key stakeholders are:

- ❖ Port Klang Authority - lead agency in executing and implementing the initiative
- ❖ Terminal Operators (Port Operators)
- ❖ Freight Forwarders
- ❖ Customs Brokers
- ❖ Shipping Agents

10

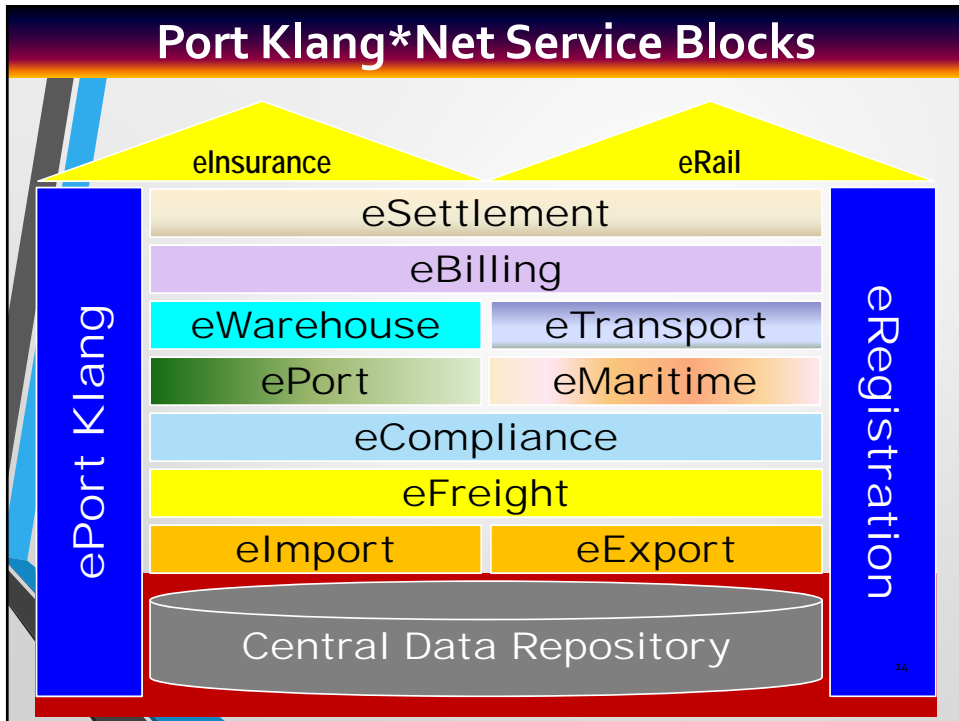
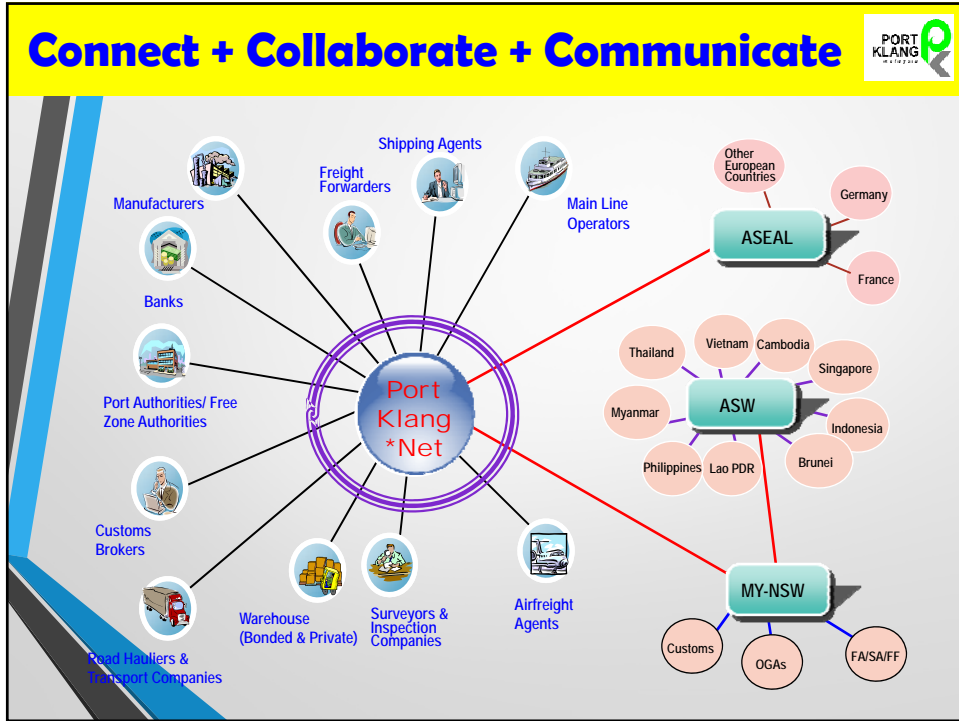
PORT KLANG NET PLAYERS (CONT.)

Key stakeholders are:

- ❖ Hauliers/Transporters
- ❖ Warehouse Operators
- ❖ Depot Operators

11





PORT KLANG NET SERVICE BLOCKS (CONT.)

- Each module is subject to approval by the Technical & Steering Committee.
- Each “Block” can be viewed as the segment function for each group of logistics players in the community.

15

ISSUES & CHALLENGES

- Active participation of all relevant parties involved in transportation & logistics
- Willingness to amend existing system/integrate with Port Klang Net System & bear any cost incur
- The importance of paper less trade to increase competitiveness and to maximize benefit by reducing cost & time
- Creating full community – centric exchange solutions to the entire port users, logistic providers and cargo owners.

16

ISSUES & CHALLENGES (CONT.)

- Creating awareness for the entire port supply chain for efficient services.
- Transparency of documents movement in the form of date / time logging.
- Identifying each players in Port Klang by registering them via Port Klang Net monitored & supervised by Port Klang Authority.

17

BENEFITS

- Saves cost: Integrating data of multiple service providers through a single and neutral platform. (e.g. shipping agents send Booking Confirmation to Shippers, who can reuse the same information for Forwarding Instructions or Request of Transport).
- Improves your efficiency by eliminating repetitive data entry and transcription errors.

18

BENEFITS (CONT.)

- Better planning and control by having real-time information as well as cargo visibility to all service providers, Consignee, etc.

19

STRENGTH

- Ease of Shipping & Logistics Procedures.
- Strengthening of Logistics Chain thru Data Integration.
- Avoidance of "face-to-face" dealings.
- Avoiding Repetitive Input of Data (Reusability of Data).

20

STRENGTH (CONT.)

- Security Risks Management thru electronic transactions.
- Closing the Gap between players in Logistics Chain.
- Reduction (or elimination) of paper-based transactions.

21

STRENGTH (CONT.)

- Different means of Data Exchanging.
- Increase Operational Efficiency & reduction of manpower.
- Automating System Procedures.

22

PORT KLANG NET HOMEPAGE

The screenshot shows the Port Klang Net homepage. At the top, there is a navigation bar with links for Home, Referral Code, SCN Listing, eFW, Contact Us, and Help. Below this, a 'Welcome to Port Klang Net!' message is displayed. The main content area contains several news items, including one about email alerts on Vessel's ETA. On the right side, there is a 'LOGIN DETAILS' section with input fields for Account No., User ID, and Password, along with a 'Login' button. Below the login section, there are links for 'Forgot My Password?' and 'Login'. A sidebar on the right contains a 'LPC Registration' dropdown menu with options for 'New Port Klang User Registration' and 'Re-Submit User Registration', and a 'Company Directory' link. At the bottom right, there is a 'No. of users registered' section showing statistics for Shipping Agents (166), Forwarding Agents (403), and Freight (Details). The page number '23' is visible at the bottom right.

<http://my1port.com/>

IMPLEMENTATION STATUS

3 Modules were successfully implemented :

1. User Registration – live on 1st Dec. 2012
2. Vessel Profile Registration ID – live on 1st Jan. 2013
(a vessel identification number is issued for all vessels upon their maiden call)
3. Ship Call Number – live on 7th Jan 2013

Users/Vessel ID/SCN Registration From Implementation Date to June 2014

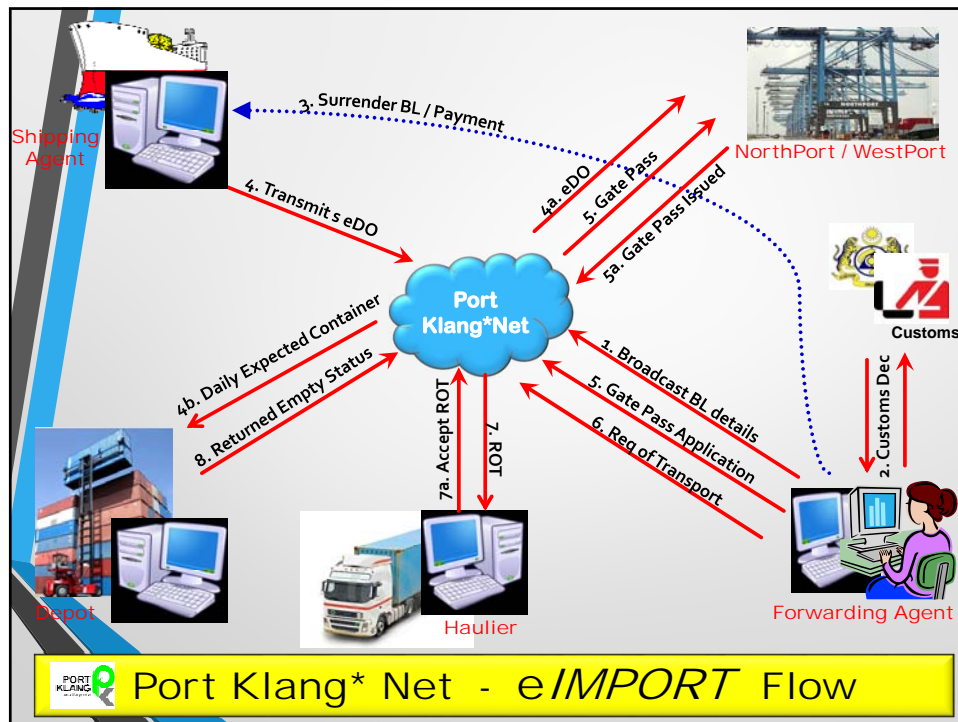
NO	ITEM	TOTAL
1	Users	981
2	VID	5,077
3	SCN	27,239

25

IMPLEMENTATION STATUS (CONT.)

- 4th Module - eIMPORT : Pilot testing
Target live - Oct 2014
- 5th Module - eEXPORT : 3 - 6 months
- 6th Module - ePAYMENT : 3 months

26



Thank You
 @
Terima Kasih
 @
谢谢

Email: noraidah@pka.gov.my
 Web site: www.pka.gov.my

28