

800-947-1186 | 212-444-6686

Adobe

Premiere Elements 11

Video Editing Software

- Drag & Drop HD/SD video editing
- InstantMovie auto-editing
- Color-correction presets & fine-tuning
- Burn HD content to standard DVDs
- Photo Pan & Zoom
- Hundreds of effects & transitions
- Automated sharing to YouTube & Facebook



#ADPE11WM (Mac/Windows)..... **68.95**

Adobe

Premiere Pro CS6

- Import/export from other NLEs
- Script-to-screen workflow
- Tapeless camera support
- Native DSLR support
- Improved Metadata
- Ultra Keyer
- 64-bit compatibility



For Windows (ADPPCS6WW) **734.99**
 For Mac (ADPPCS6MW)..... **735.00**

Adobe After Effects CS6

2D/3D Compositing and Animation Software

- Native 64-bit support
- Motion graphics and visual effects
- 2D/3D compositing & animation
- Fast rotoscoping with rotobrush
- Work with HD, 2K, & 4K projects
- AVC-Intra & enhanced RED support
- Color LUT support



For Mac (ADAEC6MW)..... **919.95**
 For Windows (ADAEC6WW)..... **899.95**

Autodesk Smoke for Mac 2013

Video Editing and Effects Software for Mac

Integrating a familiar timeline workflow and node-based compositing, Smoke connects editing and effects like never before. Includes finishing tools for 3D compositing, color correction, and motion graphics. Eliminates the need for round-tripping between multiple creative applications and provides a fast and iterative creative environment.



#AUSM13CNSLM..... **3495.00**

Media Composer 6.5

The industry-standard, provides 64-bit performance, easy-to-use video editing tools, and streamlined HD, file-based, and stereo 3D workflows. Also includes Avid FX; EDL Manager; Sorenson Squeeze; FilmScribe; Log Exchange; MediaLog; and for Windows users – Avid DVD.



Choice of Mac or Windows (AVMC6.5PCME) **2399.00**
 Cross Grade from FCP to Composer 6 (AVFCPMC6.5CG) **999.00**

Blackmagicdesign

Davinci Resolve 9
 Color Correction Software

The name behind more feature films, TV commercials and episodes, documentaries, and music videos than any other grading system. There are thousands of colorists worldwide who understand the performance, quality and workflow of DaVinci and love it as their trusted partner in creativity.



#BLDRCCS9..... **945.25**

Final Draft Final Draft 8

Script Writing Software

- #1 selling program for writing movie scripts, TV episodes and stage plays.
- Combines powerful word processing with professional script formatting in one easy-to-use package.
- No need to learn about script formatting rules – it automatically paginates and formats your script to industry standards as you write.



#FFD8..... **161.99**

grass valley EDIUS Pro 6.5

Editing Software

- Real-time editing / effects / conversion
- 10-bit color correction
- 3D Stereoscopic Editing
- QuickTime codec for export to Win or Mac
- Export sequence with Alpha Channel
- Filmstrip view in timeline
- Proxy and Hi-Res workflow modes
- Multicamera editing of up to 16 sources



#GRE06.5RB..... **589.00**

POWERPRODUCTION StoryBoard Quick

- Powerful storyboarding tools
- No drawing or artistic skills needed
- Extensive library of characters and props
- Variety of locations
- Print and export options
- Import images
- Draw tools
- Compatible with Mac/Windows



#POSBQ6A (Academic Edition) **Call or Log-on**

SINGULAR SOFTWARE

PluralEyes

Save hours in post. Automatically synchronizes all your audio and video clips without need for timecode, clappers or any special preparation.



For Final Cut Pro (SIPE3FCP)..... **179.00**
 For Premier Pro Mac (SIPEDPPM)..... **179.00**

SONY Vegas Pro 12

HD Video & Audio Editing/Blu-ray Disc Creation

- GPU-accelerated effects & rendering
- Stereoscopic 3D editing
- Blu-Ray authoring w/DVD Architect Pro
- Unlimited audio tracks and 5.1 mixing
- Dolby Digital Professional Encoder
- DSLR video XDCAM, NXCAM, AVCHD, RED & 4K Support



#SOVP12..... **Call or Log-on**

sorenson media Squeeze 8.5 Pro

Video Encoding Software for Mac & Windows

- High quality codecs and professional pre-processing creates clearer and crisper videos.
- Compatible with 30 input and output video and audio formats
- Dozens of quality filters
- Seamless integration with AVID, Final Cut Pro, and Premiere



#SOS8.5PBV..... **899.00**

TELESTREAM

Episode 6 Encoding Software for Mac

- Encodes for DVD, Web, Broadcast & Mobile
- Extensive collection of professionally designed workflows and encoder presets
- 10-Bit Encoding Engine
- Automated Workflows
- Inputs/outputs many professional formats
- Surround Sound Encoding for 5.1 & 7.1



Episode 6 for Mac (TEE6MESD)..... **469.00**
 Episode 6 for Mac (TEEP6MESD)..... **939.00**
 Wirecast Studio 4 for Mac (TEWCS4M)..... **469.00**
 Wirecast Pro 4 for Mac (TEWCP4M)..... **857.95**

TIFFEN

Dfx v3

Digital Filter Suite

Offers a palette of over 2,000 definitive digital filters with effects that simulate Tiffen's world-reknown optical filters, plus much more! Provide unmatched performance, flexibility, and control. Complete standalone for Avid, FCP, After Effects and Premiere.



#TIDFXFCV3..... **499.00**

VIDEO COPILOT

Action Essentials

2K Resolution Action Stock Footage

- 20 categories of FX
- 500 pre-keyed high definition elements
- 2.5x more resolution in each element
- Built-in alpha channels
- 20 action sound effects
- Detailed video thumbnails
- Over 90% live action footage
- Includes 60-min. Training Video



#VIAE22..... **229.00**

SD & HD Mini-Converters

- Industry standard stand-alone converters
- Complete range of HD and SDI solutions
- Bullet-proof reliability and world-class support



- D4E:** SDI to NTSC/PAL encoder (AJD4EQ) **Log-on**
- D5CE:** SDI to component converter (AJD5CEQ)..... **Log-on**
- D10AD:** Universal component or composite to SDI converter (AJD10ADQ)..... **Log-on**
- D10CEA:** SDI to analog audio and video converter (AJD10CEAQ)..... **Log-on**
- HA5:** HDMI to SDI/HD-SDI converter. Provides 2 SDI/HD-SDI outputs and supports long HDMI cables on the input. (AJHA5Q).... **Log-on**
- HDP2:** HD-SDI/SDI to DVI-D & Audio Converter (AJHDP2Q). **Log-on**
- HD5DA:** 1x4 HD-SDI Distribution Amplifier (AJHD5DAQ).... **Log-on**
- H15:** HD-SDI/SDI to HDMI video and audio converter for driving HDMI monitors. Provides 2-channel RCA audio outputs for separate audio monitoring if needed. (AJH15Q)..... **345.00**
- H15 3G:** HD-SDI/SDI to HDMI Converter (AJH153GQ)..... **Log-on**
- H15-3D:** Combines dual 3G SDI inputs to form various multiplexed 3D formats for output on true 3D HDMI 1.4a and SDI monitors. It supports both 2D and 3D inputs (AJH153DQ)..... **Log-on**
- H15-FIBER:** HD/SD-SDI over Fiber to HDMI (AJH15FQ)..... **589.00**
- HD10DA:** HD/SD (dual-rate) re-clocking 1x6 serial digital DA (AJHD10DAQ)..... **Log-on**
- HD10A:** HD analog to HD-SDI converter (AJHD10AQ)..... **Log-on**
- HD10AVA:** Analog Audio/Video to HD/SD-SDI Converter (AJHD10AVAQ)..... **695.00**
- HD10AM:** HD/SD 8-channel AES embedder/disembedder (AJHD10AMQ)..... **795.00**
- HD10AMA:** HD/SD 4-Channel Analog Audio Embedder / Disembedder (AJHD10AMAQ)..... **Log-on**
- HD10CEA:** HD/SD-SDI to analog video (AJHD10CEAQ)..... **795.00**
- HD10MD3:** HD Mini Digital Downconverter (AJHD10MD3Q) **Log-on**
- HD10C2:** HD-SDI and SDI D/A Converter (AJHD10C2Q)..... **Log-on**
- 3GDA:** 1x6 3G/HD/SD Reclocking DA (AJ3GDAQ)..... **Log-on**
- UDC:** Up/Down/Cross Mini-Converter (AJUDCQ)..... **Log-on**
- FIDO-TR:** SD/HD/3G SDI / Fiber Transceiver (AJFIDOTRQ).... **Log-on**
- FIDO-R:** Optical Fiber to SD/HD/3G-SDI (AJFIDORQ)..... **Log-on**
- FIDO-T:** SD/HD/3G-SDI to Optic Fiber (AJFIDOTQ)..... **Log-on**
- FIDO-R-ST:** ST Fiber to SDI Converter (AJFIDORSTQ)..... **Log-on**
- FIDO-T-SC:** SDI to SC Fiber Converter (AJFIDOTSCQ)..... **Log-on**
- FIDO-T-ST:** SDI to ST Fiber Converter (AJFIDOTSTQ)..... **Log-on**
- FIDO-2T:** Dual channel SDI to Fiber converter (AJFIDO2TQ)..**Log-on**
- FIDO-2R:** Dual channel Fiber to SDI converter (AJFIDO2RQ)..**Log-on**
- GEN10:** HD/SD Sync, Blackburst Generator (AJGEN10Q)..... **345.00**
- DWP-U-R1:** Worldwide Power Supply Repl. (AJDWPUR1)..... **40.00**
- RMB-10:** Brackets for Mini-Converters (AJRMB10)..... **Log-on**
- RMB-RO Rackmount Bracket:** To mount the mini converters to any flat surface. (AJRMB)..... **7.00**
- T-TAP:** Captures 10-bit SD/HD/2K video and embedded audio from a Thunderbolt-enabled computer and outputs it via SDI and HDMI. (AJTTAP)..... **Log-on**



KONA LHe PLUS HD-SDI / Analog Video Capture & Playback PCI Card

Broadcast-quality PCI card for Mac and Windows systems, the LHe PLUS offers HD/SD-SDI input, dual SDI outputs, and a full complement of analog video and audio inputs/outputs via included breakout cable. The card features genlock input and performs 10-bit down conversion from HD to SD. Because conversion is hardware-based, its available upon both capture and playback. BNCs for analog component, composite, and S-Video input and output to support an extremely wide variety of video systems. (AJKONALHEP)..... **Call or Log-on**



KONA LHi SD/HD Capture Card for Macintosh

Allows analog cameras and VCRs alongside 3G SDI and HDMI v1.3a enabled products to interface to Mac OS X hardware, with integrated support for Final Cut and other QuickTime applications. Steps-up from the KONA LHe with 3G HD/SD SDI I/O, HDMI v1.3a I/O, LTC input (on reference input), and realtime SD to HD up-conversion, HD to HD cross-conversion and HD to SD down-conversion. (AJKONALHI)..... **Call or Log-on**

(AJKLHIBOX) Breakout Box for KONA LHi..... **Call or Log-on**

KONA 3G Capture Card for Uncompressed SD, HD, Dual Link HD, 2K and 3G

Steps up from the Kona LHi with 2 SD/HD/3G SDI inputs/outputs, HDMI 1.4a support for 3D workflows, 16-channel SDI embedded audio I/O, and up to 16-channel AES digital audio I/O (8 with breakout cable or 16 with optional K3G-Box). Also features separate LTC input and output ports, master or slave configurable RS-422 control port, internal hardware keyer and 2K video format support. (AJKONA3G)..... **1995.00**

K3G Breakout Box (AJK3GBOX)..... **Call or Log-on**

ioExpress Portable Video Audio I/O Interface

Interface for mastering and inexpensive monitoring when working with Apple ProRes 422 and 422 HQ, XDCAM HD, DVCPRO HD, and more. Features HD/SD-SDI I/O, HD/SD component output, LTC I/O, 2-channel RCA audio, and RS-422 in a durable and portable device.



ioExpress (AJIOEXPRESSE)..... **Log-on** io Express Desktop Video Audio I/O Interface (AJIOE)..... **Log-on**
ExpressCard34 PCIe to PCIe Cable Interface Adapter (AJIOXPRESSCA)..... **Log-on**

Io XT Professional 3G-SDI/HDMI Capture & Playback Device with Thunderbolt



Compact and portable, the Io XT features 3G/Dual Link/HD/SD-SDI, component analog and HDMI connectivity, to bring desktop-level power to any Thunderbolt-enabled Mac, with full uncompressed HD and SD 4:2:2 and 4:4:4 capable video and audio connectivity. It also offers hardware-based up/down/cross conversion for HD and SD formats, RS-422 control

and switchable reference and LTC input/output. (AJIOXT)..... **Call or Log-on**

Ki Pro • Ki Pro Rack • Ki Pro Mini

Digital Disk and Compact Field Recorders

The tapeless Ki Pro records 10-bit ProRes 422 files from virtually any video and audio source – via SD/HD-SDI, HDMI, and analog inputs – and lets you immediately edit them in Final Cut Pro X. On a table, in a bay, or mounted between a camera and tripod, Ki Pro records hours to a removable storage module with built-in FireWire 800 or to 34mm ExpressCard Flash. Built-in Wi-Fi and Ethernet allows control via web or iPhone. Used for on-set monitoring, provides instant access to multiple displays. Otherwise the same, the Ki Pro Rack comes in a 1RU format while the Ki Pro Mini uses CompactFlash cards emphasizing portability when size matters and conversion and I/O option diversity aren't needed.



- Ki Pro:** With 250GB HDD Storage Module and AC Adapter with 4-pin XLR connector (AJKIPRORO)..... **Log-on**
- Ki Pro:** Same as above without HDD storage (AJKIPRONDRO)..... **3795.00**
- Removable 250GB HDD storage module (AJKISTOR250R)..**Log-on**
- 300 GB SSD Storage Module (AJKISTOR300R)..... **Log-on**
- Removable 500GB HDD storage module (AJKISTOR500R)..**Log-on**
- Replacement 12v DC Adapter for Ki Pro (AJKIOXACADP).... **Log-on**
- Ki-STOR500-R0 Ki Pro 500GB 7200 RPM HDD Storage Module (AJKISTOR500R)..... **Log-on**
- 750GB KiStor USB3 Storage Drive for Ki Pro & Ki Pro Rack (AJKISTOR750U)..... **495.00**
- Ki Pro Mini:** Includes AC Adapter with 4-pin XLR connector (AJKIPROMINIR)..... **Log-on**
- Universal Mounting Plate for Ki Pro Mini (AJKIMINIPLAT)..... **Log-on**
- Rod Accessory Plate for Ki Pro Mini (AJKIMINIRDNP)..... **50.00**
- Tabletop Stand for Ki Pro Mini (AJKIMINISTAN)..... **75.00**
- IDX** V-Mount Adaptor for AJA Ki Pro Mini (IDAE2KPM)..... **559.95**
- Ki Pro Rack:** Records direct onto optional HDD/SSD storage modules (AJKIPRORACK)..... **Log-on**
- Ki Pro Quad:** 4K/Quad HD/2K/HD Solid State Recorder. From camera capture to editorial and monitoring, the Ki Pro Quad unites the components of a 4K workflow in a compact, powerful and affordable package (AJKIPROQUAD)..... **3995.00**

FS1 HD/SD Audio/Video Frame Synchronizer and Converter



Flexible “anything in, anything out” architecture, the FS1 simultaneously works with HD and SD video – in full 10-bit broadcast quality video and 24-bit audio. Supports virtually any input/output— analog or digital, HD or SD. Up/down convert between SD and HD, as well as cross-convert between HD formats. Supports 8-channel AES, balanced analog, or 16 channel embedded audio with full flexibility and audio processing controls. (AJFS1)..... **Log-on**

FS2: Dual Channel Frame Synchronizer and Converter (AJFS2)..... **Log-on**

800-947-1186 | 212-444-6686



ADVC55 Compact Analog / Digital Converter

- Connects VHS, Hi8, and other analog video equipment to DV camera or editing system.
- Capture analog video into FireWire (IEEE1394)-equipped editing computers.
- Composite (RCA) and S-Video input (NTSC/PAL compatible)
- Unbalanced stereo audio input
- No drivers to install, bus-powered when used with a 6-pin firewire cable



#GRADVC55.....**Call or Log-on**

ADVC110

Bi-Directional Analog / Digital Video Converter

- Portable converter for capturing and outputting analog video to any FireWire (IEEE1394) equipped notebook or desktop computer.
- Composite (RCA) and S-Video input/output
- Unbalanced stereo audio input and output
- No drivers to install, bus-powered when used with a 6-pin firewire cable



#GRADVC110.....**189.00**
PSUV5 Power Supply for ADVC-55/110 (GRPSADVC110).....**Log-on**

EDIUS Pro 6.5

NLE System with STORM 3G Board

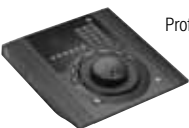
Bundles EDIUS Pro 6.5 software with the STORM 3G I/O board for 3G-SDI editing and monitoring on an HDMI display.



- Board supports 3G-SDI-based editing and tapeless workflows; lets editors preview projects in real time, using HDMI displays.
- Reference input support for blackburst and tri-level sync
- Machine control for external VTR ingest, and optional VTR emulation software that lets you control an EDIUS Workstation like a VTR for direct payout from the workstation.
- EDIUS Pro 6.5 software features real-time editing and conversion for all popular video formats, a color correction tool that supports 10-bit color depth, 2K/4K support, a free shape mask filter and 16-camera multicam editing.
- Timeline accepts all popular SD/HD formats, including REDCODE RAW, Sony XDCAM and EOS Movie formats. Mix different formats and frame rates in the timeline and just start working.

#GRS3GEP6.5.....**1798.95**

Euphonix MC Transport



Professional, hands-on control and navigation for applications like Final Cut Pro, Logic Pro, and Pro Tools. Features ultra-high resolution optical jog wheel and shuttle ring, ergonomic transport controls, programmable

Soft Keys and integrated numeric key pad.

- Weighted, optically encoded jog wheel and shuttle ring
- 7 transport/navigation keys with multi-color status LEDs
- 6 programmable Soft Keys
- 16 numeric keys for time code/marker navigation

#EUMCTRANS.....**Call**



ADVC1000 Broadcast-Quality Bi-Directional SDI/DV Converter

Professional, high-quality bi-directional SDI/DV video converter designed for broadcast studio equipment, the ADVC1000 features front-side controls and LCD display, analog video and unbalanced audio outputs for monitor preview, and a solid half-1U 19" rackmount design. Patented PerfectSync technology ensures perfect output synchronization. PerfectSync controls and synchronizes the transfer rate of IEEE1394 communication with an external reference signal. This prevents skipped and duplicate frames and produces perfect conversion of all frames during analog/DV conversion.



#GRADVC1000.....**Call or Log-on**



ADVC-HD50 Realtime HDMI-to-HDV Conversion

Converts uncompressed HD video and audio from HDMI devices to HDV format then outputs a FireWire connection for use in a non-linear editing system. Sleek and portable, it requires no drivers of software, and is compatible with PC and Mac-based editors. Perfect for anyone who needs HDMI ingest without internal hardware.

#GRADVCHD50.....**Call or Log-on**

ADVC G1 Any In to SDI Multi-Functional Converter / Upconverter with Frame Sync

1/3 RU box with dual 3G/HD/SD-SDI outputs, the ADVC G1 can convert and/or upconvert sources to HD/SD-SDI (with 1.5 and 3 Gb/s support) via its HDMI, DVI, component, composite, and S-Video inputs. Also functions as an audio embedder, capturing sources via its AES/EBU and analog audio inputs and embedding them for output via SDI. Can also serve as a frame synchronizer for audio inputs, eliminating the need for a separate frame sync.



#GRADVCG1.....**Call or Log-on**

ADVC G4 Sync Generator with Reference



Compact, robust 1/3 RU sync generator that puts out nine output signals and supports all major SD (NTSC and PAL) and HD formats. Outputs can be configured in groups of three as SD or HD signals, so you can have 6 HD outputs and 3 SD outs, for instance. It also features a 48 kHz wordclock and a reference input, which makes it compatible with systems that require more than nine outputs. The reference in also enables the device to live in a secondary array and serve as an extension from the main system, if necessary.

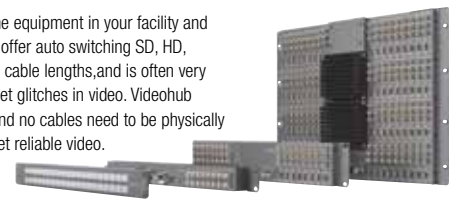
#GRADVCG4.....**Call or Log-on**



VideoHub Broadcast-quality 3 GB/s SDI Routing Switchers

Eliminate manual video patching forever. Videohub lets you connect all the equipment in your facility and change connections from your computer. Broadcast-grade routers, they offer auto switching SD, HD, 3Gb/s SDI, redundant power and re-clocking. Manual patching limits SDI cable lengths, and is often very complicated to understand, plus patch cables wear out quickly, so you get glitches in video. Videohub eliminates these problems because everyone is permanently connected, and no cables need to be physically changed. They re-clock SDI video for long cable lengths so you always get reliable video.

Videohub connects to any computer via USB and is then shared over your local network. Software panels run on Windows and Mac OS X.



Micro Videohub: Perfect for locations where space really counts, such as OB trucks. Includes 16 x 16 SDI routing, auto detection for SD, HD and 3 Gb/s HD-SDI, re-clocking, and built in ethernet, USB and serial router control interfaces. (BLMVH).....**1420.25**

Smart Videohub: Same as the Micro Videohub (above) plus adds a built in control panel. Now you can change all routing with the push of a button (BLSVH).....**1895.25**

Compact Videohub: Perfect when you need a bigger router in a small size, like post facilities and broadcast trucks. Includes 40 x 40 SDI routing all packed into a 2RU size. (BLCVH).....**2845.25**

Studio Videohub: Compact, features 16 inputs, 32 outputs and 16 deck control ports all packed into a 2RU size less than an inch thick. (BLVHUBST).....**2845.25**

Broadcast Videohub: 72 inputs, 144 outputs, 72 deck control ports, and audio switching SD, HD, and 3Gbs SDI in a single unit. (BLBCVH).....**14,245.25**

Smart Control: Control panel for all your monitors and decks so you can set the input with a single button press. Each button can be set to a different router input and you can set single or multiple router outputs. Connects to Videohub via Ethernet (BLSQ).....**470.25**



DVI Extender 3 Gb/s SDI Monitor Extender

Extend the DVI-D connection to your computer monitor via SDI cables. Connect your computer displays anywhere in your facility, and to more than one monitor when using any 3 Gb/s SDI router. Also works as a regular DVI to SD/HD-SDI video converter. (BLHDLEXTDVI).....**375.25**



Intensity Pro • Intensity Shuttle

SD/HD Capture and Playback for HDMI and Analog Video

Mac and PC compatible, Intensity Pro offers HDMI, analog component, composite (NTSC/PAL) and S-Video capture and playback. Instantly switch between HD and SD. Supplied break-out cable includes analog RCA stereo audio I/O and S/PDIF audio output. Plug-in Intensity Shuttle and get access to 10-bit HDMI, analog component, composite and S-Video capture and playback. Inputs are on one side, and outputs on the other. Powers via USB 3.0 connection so no need for power supplies.



Intensity Pro (BLIP) or Intensity Shuttle (BLIS)..... ea. 189.05
Intensity Shuttle with Thunderbolt (BLIST)..... 227.05
Intensity Extreme HDMI & Analog via Thunderbolt (BLIE)...284.05

DeckLink SDI

SD/HD-SDI Editing Card

Combines highest quality 10-bit SD/HD-SDI capture and playback with high-end features such as black burst/HD tri-sync reference input, and RS-422 deck control. It can instantly switch between SD-SDI and HD-SDI formats, and includes 8 channels of embedded SDI audio support, so all video and audio connections are made with a single BNC type SDI video cable.



#BLDLSDI..... **280.25**

DeckLink Duo • Quad

Two completely independent capture and playback streams via two SDI inputs, and two SDI outputs plus a common tri-sync/black burst reference. Perfect for servers where there are multiple streams or simultaneous capture and playback per system. (BLDLD).... **470.25**



DeckLink Quad provides four independent DeckLink capture cards with broadcast grade multi-channel SDI capture and playback, each with bypass relays, watchdog timer, black burst and tri-level genlock for locking to sources of any frame rate—all designed into a single PCI Express card. (BLDLQ)..... **945.25**

DeckLink Studio 2

SD/HD-SDI, HDMI & Analog Editing Card



Connections for SDI, HDMI, analog component (BNC x3), composite (BNC) and S-Video, so all types of equipment can remain connected without recabling. SD only output via

a built in hardware down converter even when running in HD. SD down converted output lets you monitor work in both SD and HD at the same time. Includes 4 channels of balanced analog audio, as well as 2 channels of AES/EBU digital audio. Outputs can be switched to provide 6 channels of digital audio output.

#BLBDLKSTUDIO..... **660.25**
 DeckLink Studio Breakout Cable (BLCDS)..... **118.75**



DeckLink HD Extreme 3D Dual Stream 3D Capture and Playback



Capture and play back from virtually any video and audio device, even in 3D. Also features advanced full resolution 3D editing, including dual stream SDI capture and playback plus built in HDMI 1.4. Perfect for post production, broadcast and even feature film work, DeckLink HD Extreme 3D switches between SD and HD, and has built in 3 Gb/s SDI, 4:2:2 and 4:4:4 RGB, native 12 bit and frame rates right up to 1080/60p. Also features built in up, down and cross conversion, plus an internal SD/HD keyer.

#BLDLHDE3DP **Call** Breakout Cable for Decklink HD (BLBOCDLHDE3) **118.75**

DeckLink 4K Extreme PCI Express Capture & Playback Card

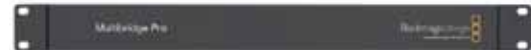
All the features of the DeckLink HD Extreme 3D card (above), plus adds 4K playback that is four times the resolution of 1080HD video and a much faster PCI Express Gen 2 connection. The dual link 3 Gb/s SDI allows four times the resolution of regular HD video, using only two BNC SDI cables. The dual link 3 Gb/s SDI connection for 4K is a new standard pioneered by Blackmagic and takes the old quad link HD-SDI connections and multiplexes them to reduce cable count and router cross points required to route 4K signals. DeckLink 4K Extreme also includes all the latest technologies and video connections, such as HDMI 1.4 frame packing 3D, which allows full resolution frames for the left and right eyes down the single HDMI connection so each eye gets a full resolution image.



#BLDL4KEXT **945.25**

Multibrige Pro 2

Designed to work in broadcast and post-production work, Multibrige Pro 2 can connect to virtually any signal format. It is compatible with SDI, 3Gbps SDI, HDMI, and analog video signals. It also supports multi-channel audio and both NTSC and PAL standards. Fully compatible with SD, HD, and 2K in 4:4:4 or 4:2:2 formats on a single BNC cable. 2K can also be managed via an SDI connection for real-time 2048 x 1556 editing. (BLDLMBPQ2)..... **1515.25**



HDLink Pro DVI • HDLink Pro 3D DisplayPort

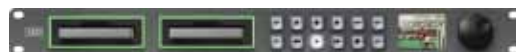
Advanced HD Monitoring Solutions

HDLink Pro DVI includes amazing quality DVI and HDMI monitoring with 6 channels of RCA analog audio out, 3D lookup tables, Dual Link 3 Gb/s SDI input, single link 3 Gb/s DI loop thru output, and support for 24" displays for HD monitoring and 30" displays for real time 2K monitoring. SDI monitoring solution for deep bit depth, HDLink Pro 3D DisplayPort supports full 3D stereoscopic and HDMI 1.4. Get the highest quality in both 4:2:2 and 4:4:4. Perfect for SD, HD and feature film 2K monitoring.



HDLink Pro DVI (BLHDLDVIPRO) or HDLink Pro 3D DisplayPort (BLHDLPRODISP)..... **470.25**

HyperDeck Studio SSD Deck Uncompressed HD Disk Recorder



Features dual SSD slots and automatically continues recording onto the next SSD when one record disk fills. HyperDeck Studio delivers uncompressed video quality

capture and playback, and disks can be mounted directly on your computer as media storage for editing without any file copying. SD/HD-SDI and HDMI inputs and outputs. VTR style design with function control, jog/shuttle knob, plus an external RS-422 control.

#BLHDST **945.25** HyperDeck Studio Pro (BLHDSHP) **1895.25**

HyperDeck Shuttle Video Recorder

Records uncompressed 10-bit HD and SD video as QuickTime files from any SDI- or HDMI-enabled camcorder. Extremely compact, the recorder uses optional 2.5" SATA SSD drives for data storage. By bypassing the camera's compression, you to get the highest-quality output possible from camcorders that typically record video as highly compressed HDV, AVCHD, or another similar codec. (BLHDSH)..... **249.95**



HyperDeck Shuttle 2 SSD Video Recorder (BLHDSH2) **327.75**

H.264 PRO Recorder



Connect via USB, delivers professional encoding from SDI, HDMI, analog component/ composite and balanced audio. Capture from professional broadcast decks directly to SD and HD H.264 files Capture old or new programming content into the same file format used on the web, iPad, iPod, iPhone, Apple TV, and YouTube. (BLH264PR)..... **470.25**

Video Recorder

Capture video direct to H.264 video files for your iPod, iPhone, YouTube and even full resolution video backups. Plugs directly into your computer's USB and includes easy to use software. Get the highest quality video capture from any composite or component source. Saves time by capturing into the native file format of your mobile device. It can even copy to iTunes ready for syncing. (BLVR)..... **141.55**



800-947-1186 | 212-444-6686

Video Editing Hardware



UltraStudio 3D Mac-compatible 3G/HD-SDI Capture & Playback via Thunderbolt

Captures uncompressed 10-bit 4:4:4 RGB and 4:2:2 YUV video from any deck, broadcast router, or video camera with SDI output, and plays it back to broadcast-quality SDI monitors. With both dual- and single-link 3G-SDI supported, resolutions up to 2K are supported, for feature film work. The Thunderbolt connection supports data rates up to a blazing 10 Gb/s allowing it to support two streams of 1080p HD video for stereoscopic 3D workflows. Also features an HDMI 1.4a input for capture and an HDMI 1.4a output for monitoring via an HDMI-enabled monitor. Has RS-422 deck control and accepts a blackburst or tri-sync reference signal.



UltraStudio 3D (BLUS3D1)	945.25	UltraStudio Express (BLUSEXPRESS)	470.25
UltraStudio Pro (BLUSP)	850.25	UltraStudio SDI (BLUSSDI).....	375.25

UltraStudio 4K Rack-based Capture & Playback for Thunderbolt

Used table-top or rack-mounted, UltraStudio 4K is an external capture and playback device that features top quality connections, Quick-Time and DPX codec compatibility, and compressed and uncompressed transfer capacity. It is compatible with the widest range of video equipment and editing software, and is one of the highest-performing capture and playback devices ever made. It captures from your camera at a maximum of 2K resolution, but can play back at up to 4K, meaning that any 4K footage you may have on your computer from another input source, you can output for monitoring in full 4K on a separate display. 4K is handled by the the Dual Link 3 Gb/s SDI and HDMI outputs. Front panel features an integrated color LCD. Also features up, down, and cross conversion, a built-in SD Keyer, and support for professional audio. (BLUS4K)



1230.25

UltraStudio Mini Monitor • UltraStudio Mini Recorder

Pocket sized SDI/HDMI Capture or SDI/HDMI Playback Devices

UltraStudio Mini Monitor and Mini Recorder feature 3 Gb/s SDI and HDMI connections plus high speed Thunderbolt technology. Extremely portable and pocket sized, they are powered by their Thunderbolt connections so they can be operated from a computer's battery or power source. They support all common SD/HD formats for incredible quality video up to 1080p60. UltraStudio Mini Recorder is designed for recording SDI and HDMI video while UltraStudio Mini Monitor is designed for playing back SDI or HDMI video.



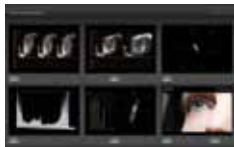
UltraStudio Mini Recorder Capture Device (BLUSMINIREC)	137.75
UltraStudio Mini Monitor Playback Device (BLUSMINIMON).....	137.75

UltraScope

Broadcast accurate PC-based scopes, they are perfect for master monitoring, edit suites, color correction and equipment rooms.

UltraScope:

PCI Express card and software, UltraScope works with a low cost PC and display. Detects between SD, HD and 3Gb/s HD-SDI video and includes BNC SDI inputs as well as optical fiber SDI inputs. (BLUS).....



660.25

Pocket UltraScope:

Portable version of the PCI-card UltraScope, and is designed for location shoots using a USB 3.0-compatible laptop. Same great tools as the UltraScope, automatically detects an SD, HD, or 3Gbps SDI signal and converts it to USB 3.0.



#BLUP

565.25

ATEM Production Switchers

Advanced broadcast grade switchers, the ATEM family include advanced technology and unique, powerful features, all built into a familiar M/E setup that's fast and easy to use. They feature advanced broadcast SDI based design plus loads of HDMI connections for connecting low cost HDMI consumer cameras. For the highest quality video with extremely low processing delay, ATEM features a fully digital 10-bit design. This means you get the highest quality available from cameras, servers and CGs with true 10-bit video quality maintained throughout the entire signal path. Get better chroma keying and seamless layering from HDMI and SDI sources. Even the analog video inputs and outputs feature low noise AD converters for incredible analog quality.



ATEM 1 M/E Broadcast Panel (BLATEM1).....	4745.25	ATEM Television Studio Production Switcher (BLATS).....	945.25
ATEM 2 M/E Broadcast Panel (BLATEM2).....	14245.25	ATEM Camera Converter (BLACC).....	565.25
ATEM 1 M/E Production Switcher (BLA1MEPS).....	2370.25	ATEM Studio Converter (BLASC).....	1895.25
ATEM 2 M/E Production Switcher (BLA2MEPS).....	4745.25	GPI and Tally Interface (BLGPIT).....	470.25
SmartView Duo Rackmountable Dual 8" LCD Monitors (BLSVD).....	660.25		
17" SmartView HD Studio Monitor (BLSVHD).....	850.25		

Teranex 2D Processor Standards and Video Format Converter



Features high-quality de-interlacing, up and down conversion, SD and HD cross conversion, SD and HD standards conversion, automatic cadence detection and removal (even with edited content), noise reduction, adjustable scaling, aspect ratio conversion, and timecode conversion. Accompanying video is 16 channel audio conversion capacity. (BLTER2D422)

1895.25



Mini Converters

Blackmagic's Mini Converters include auto SD/HD switching, redundant input, AES/EBU and analog audio on 1/4" jacks, combined with 3 Gb/s SDI technology.



- Analog to SDI:** Converts analog HD/SD component, NTSC, PAL or S-Video to SDI with the choice to embed SDI audio from balanced AES/EBU or analog audio inputs. (BLASDIMC)..... **280.25**
- SDI to Analog:** SDI to analog HD/SD component, composite video, plus balanced AES/EBU and analog audio. (BLSDIAMC)..... **280.25**
- Audio to SDI:** Embed 4 channels of analog audio or 8 channels of AES/EBU digital audio into SDI (BLCOMCAUS)..... **470.25**
- SDI to Audio:** De-embed 4 channels of analog audio or 8 channels of AES/EBU digital audio (BLCOMCSAU)..... **Log-on**
- SDI to HDMI:** Convert from SDI to HDMI with embedded audio, plus balanced AES/EBU or analog audio. (BLSDIHDMIMC)..... **280.25**
- HDMI to SDI:** You can also choose to embed audio from balanced AES/EBU or analog audio inputs.(BLCOMCHS)..... **280.25**
- SDI To HDMI 4K:** (BLCOMCAH4K)..... **470.25**
- Optical Fiber:** Convert SDI to optical fiber and vice versa. Switches between SD, HD, 3Gb/s HD-SDI (BLCOMCOF)..... **470.25**
- UpDownCross:** Convert between SD to HD; converts 720p to 1080i or vice-versa; auto SD/HD switching (BLMCUDC)..... **470.25**
- 1x8 SDI Distribution (BLMCSDD)..... **280.25**
- Sync Generator:** Tri-level HD or SD black burst (BLSGMC)..... **280.25**
- SDI Distribution 1x8 SD/HD/3G- SDI DA (BLMCSDD).....** **280.25**
- SDI Multiplex:** Convert in various ways between Quad Link, Dual Link and Single Link SDI (BLMCSDDIMUL)..... **470.25**
- Broadcast Converter:** 1RU chassis performs bi-directional conversion between SDI and analog/HDMI signals (BLBCC)..... **945.25**
- Power Supply for Mini Converters (BLPSMC)..... **56.05**

Battery Converters

- HDMI to SDI Battery Converter (BLCONVBATTHS)..... **280.25**
- SDI to HDMI Battery Converter (BLCONVBATTS)..... **280.25**

Mini Converter Heavy Duty

Machined from a solid block of aircraft-grade aluminum, they are designed to resist damage from rough use, whether outdoors or just in the course of live production. Super-strong, they can even be run over by a truck and still work.

- Analog to SDI (BLMCONHDASDI)..... **327.75**
- SDI to Analog (BLMCONHDSIA)..... **327.75**
- HDMI to SDI (BLMCONHDHMS)..... **327.75**
- SDI to HDMI (BLMCONHDSHDM)..... **327.75**

OpenGear Converter

OpenGear Converters give you a range of conversion while providing the cost savings of an open standard combined with centralized network control and monitoring. Same as their respective Mini Converters except in card form.



- SDI to Analog (BLCOCSA).....** **470.25**
- Analog to SDI (BLCOOCSA).....** **470.25**
- HDMI to SDI (BLCOOCHS).....** **470.25**
- SDI to HDMI (BLCOOCSH).....** **470.25**
- SDI to Audio (BLCOOCSAU).....** **Log-on**
- Audio to SDI (BLCOOCAUS).....** **470.25**
- UpDownCross (BLOGCUDC).....** **470.25**
- SDI Distribution Converter (BLOGCSDID).....** **470.25**
- OpenGear Frame (BLDFR8321CP).....** **Log-on**
- OpenGear Frame (BLDFR8321CNP).....** **Log-on**
- PS-8300 Power Supply (BLPS8300).....** **540.00**

matrox CompressHD

Accelerator Card for H.264 HD File Creation

- Designed for professional content creators delivering H.264 files for Blu-ray, the web, and mobile devices.
 - Create H.264 files, for resolutions ranging from iPod to HD, faster than real time (bitrates up to 50 Mbps).
 - Works in systems with or without a video I/O device
 - Fits into Mac Pros, Intel-based Apple Xserve systems, and PCs
- #MACHD **495.00**



matrox MXO2 Mini

HDMI and Analog I/O for Mac and PC

- Use it with a laptop or desktop and applications including Final Cut Pro, Premiere Pro, Photoshop, and many more.
- Easily connects to cameras and monitors
 - Capture HD video via HDMI or analog component; NTSC and PAL via analog component, S-Video, or composite
 - Playback HD or SD video via HDMI and analog
 - Realtime upscaling, downscaling, and cross conversion
 - Stereo RCA and up to 8 channels of HDMI audio input and output
 - 5.1 and 7.1 surround sound monitoring on the HDMI output
 - Turn your HDMI screen into a professional-grade video monitor

- MXO2 Mini**
- For Desktop Systems (MAMXO2MD)..... **Call or Log-on**
- For Laptops (MAMXO2ML)..... **Call or Log-on**
- With Thunderbolt (MAMXO2MINIT)..... **Call or Log-on**
- MXO2 Mini with Matrox MAX**
- For Desktop Systems (MAMXO2MMD)..... **Call or Log-on**
- For Laptops (MAMXO2MML)..... **599.00**
- With Thunderbolt (MAMXO2MMT)..... **699.00**

matrox Convert DVI

HD-SDI Scan Converter

- Easily capture and prep computer-based content for TV broadcast. Whether your source is YouTube, Skype, video games or mobile phone videos, Convert DVI uses a simple PC-based user interface to capture any part of the screen; convert it to HD-SDI with genlock; and embed the audio in the SDI signal. Also features flicker reduction, underscan, customizable presets, and a standalone mode that allows it to deliver SDI and analog video from non-PC platforms, such as cameras or medical devices.
- #MACDVI **995.00**

matrox DVI Plus

HD-SDI Scan Converter

- Provides a progressive DVI-D input up to 1920 x 1200, and offers simultaneous A/V video output. Realtime upscaling and downscaling with proper color space and aspect ratio conversion. SD analog black burst (bi-level) or HD trilevel genlock is available with timing offset controls. Offers region-of-interest support with flexible scaling, positioning, and panning with realtime output update.
- #MACDVIP **1495.00**



matrox MXO2 • MXO2 LE Portable I/O for Macintosh

Fits in your laptop bag, and runs for hours on a field battery or the included AC adapter. Streaming Final Cut Studio and Adobe CS6 Production Premium workflow, the MXO2 provides broadcast-quality I/O monitoring, up/down/cross conversion, RS-422 control and native support for XDCAM and P2. Also offers genlock, realtime SD to HD upscaling, and turns your HDMI monitor into a true-color video display. Otherwise the same, the MXO2LE has less audio inputs and outputs and no 5.1 surround sound monitoring.



- Supports up to five simultaneous video outputs: HD and/or SD on HDMI, SDI, and analog component HD, composite, S-Video.
 - Video outputs include two HD/SD-SDI, 12-bit analog component, 12-bit composite, and S-Video, one HDMI.
 - Provides built-in 5.1 surround sound monitoring via RCA
 - Audio inputs include two XLR-balanced, two RCA unbalanced, two AES/ABU, SDI and HDMI embedded (up to 8 channels).
 - Audio outputs include four XLR-balanced, six RCA unbalanced for surround sound monitoring, two AES/ABU, SDI and HDMI embedded (up to 8 channels).
- MXO2 with Thunderbolt (MAMXO2NT)..... 1595.00**
- MXO2 with PCI Express x1 host card for desktops and an ExpressCard/34 for laptops, for PC/Mac (MAMXO2)..... 1595.00**
- MXO2 with Matrox MAX and Thunderbolt for Desktop (MAMXO2MAXNT)..... 1995.00**
- MXO2 LE for Desktop (MAMXO2MND)..... 995.00**
- MXO2 LE w/Matrox MAX for Desktop (MAMXO2MLE)..... 1395.00**
- MXO2 LE for Laptop (MAMXO2MNL)..... Log-on**
- MXO2 LE w/Matrox MAX for Laptop (MAMXO2MNL)..... 1395.00**
- MXO2 LE with Thunderbolt (MAMXO2LENT)..... 1095.00**
- MXO2 LE w/Matrox MAX & Thunderbolt (MAMXO2LEMAXN)..... 1495.00**
- ExpressCard/34 Host Card for MXO2 (MAEXP34ADP)..... **99.00**
- MXO2 PCIe Host Adapter (MAPAMXO2)..... **99.00**
- 3' MXO2 Host Adapter Cable (MAHOSTCBL1)..... **49.00**
- 10' MXO2 Host Adapter Cable (MAHOSTCBL3M)..... **89.00**
- MXO2 Thunderbolt Adapter (MATADP)..... **199.00**
- MXO2 Repl. Power Supply (MAPWRCBL)..... **49.00**

matrox Mojito MAX Professional I/O Card

Compatible with a long list of professional editing, effects, and encoding applications, the Mojito MAX performs hardware-based H.264 encoding and hardware video scaling (up, down, and cross conversion), and offers monitoring calibration tools. A 3/4-length PCIe card, it features HD/SD-SDI & HDMI I/O (along with embedded audio) and includes a breakout cable. Inputs and outputs for composite, component, and S-Video; stereo XLR input and stereo analog RCA output; and AES/EBU digital audio I/O. RS-422 input for machine control, and genlock I/O that supports both blackburst and tri-level sync. Included software enables you to calibrate your HDMI monitor so that you can use it in a broadcast-level workflow.



- (MAMJOITOMAX)..... **995.00**
- MicroQuad** SDI to HDMI Multiviewer for 3G / HD / SD Feeds (MAMQ)..... **995.00**

MOTU HD Express HD and SD Video I/O for Mac and Windows

Capture uncompressed-quality, digital HD from HDMI-equipped camcorders. Monitor pixel for pixel on plasma and LCD screens. Capture and monitor component HD or SD, plus composite and S-Video (NTSC or PAL). Connects to a Mac or PC tower via PCI Express, or connect to a laptop via ExpressCard connectivity. Supports all standard SD and HD video formats up to and including 1080p30 (720p, 1080i, 1080p & 1080PsF). Supports Apple Final Cut Pro and Adobe Premiere Pro.



- Captures and plays uncompressed HD and SD — 10-bit 4:2:2 color depth and 1920 x 1080 resolution.
 - Capture and monitor full-raster Apple ProRes, ProRes HQ or other codecs supported by Final Cut Pro and Premiere Pro.
 - Capture 8 channels of embedded HDMI audio. Play back stereo, 5.1 or even 7.1 surround sound directly to powered speakers. Also provides S/PDIF digital I/O with sample rate conversion.
- HD Express for Laptop (MACHDML)..... Call or Log-on**
- HD Express for Desktop (MACHDMID)..... 495.00**

Tangent Devices

Wave Control Panel for Resolve Software



Wave brings a new level of affordability and quality to control surfaces. Stylish enough to look good in any grading suite and compact enough to be used for on-set grading, has all the controls you'd expect from a color grading panel without compromising on the essential ergonomics. This compact unit features custom trackerballs that use non-contacting optical pickups and easy-to-read cool-blue OLED displays. Numerous control interfaces include control knobs, label buttons, function buttons, master dials, and transport controls.

- #TAWAVE..... **Call or Log-on**

element

With today's multi-purposing work stations, where desk space is at a premium, having a fully featured panel that is compact, fully featured and stylish enough to match its surroundings is a must. But, you'd expect that having a compact design means having to compromise ergonomics, features and control size. With the Element range, there is no compromise! Despite their small desk foot print, each Element offers full size controls which are ergonomically laid out, and best of all, there's lots of them!



- Element Bt Panel (TAEbTP)..... **Call or Log-on**
- Element Mf Panel (TAEmFP)..... **Call or Log-on**
- Element Kb Panel (TAEkBP)..... **Call or Log-on**
- Element Tk Panel (TAEtKP)..... **Call or Log-on**

800-947-1186 | 212-444-6686

Video Editing Hardware



Video Editing Computers

Designed for use with software like Adobe Premiere, Sony Vegas and Avid Media Composer, Rain's video editing computers are custom built. They feature seven PCI and PCI Express expansion slots, USB 3.0, DVD burner, and come installed with

Windows 7 Professional (64-bit) custom-tuned by Rain for audio and video production. They are housed in a sleek chassis with intelligent cooling system, are rigorously tested and certified for stability, and each includes phone, help desk, and remote login support.



Stratus V2: Powered by a 3.06 GHz Westmere Xeon Quad-Core CPU, 6GB Triple-Channel RAM and 1GB Quadro 600 Graphics Card. Has a 1TB SATA III Hard Drive and PCI / USB / eSATA and FireWire interfaces for high-speed device connectivity. Includes aluminum USB keyboard and optical mouse. In Black (RASV202) **1799.00**

Element VFX Video + Graphics Workstation: Powered by a 3.6 GHz Sandy Bridge-E Xeon Quad-Core CPU, 8GB of Quad-Channel RAM and 1GB Quadro 2000 Graphics Card. Has a 1TB SATA III High-Performance Hard Drive. Has PCI / USB / eSATA and Firewire interfaces for high-speed device connectivity. Includes aluminum USB keyboard and optical mouse. In Silver (RAEVX02)..... **2999.00**

Element V2: Powered by two (2) Xeon 6-Core 2.0 GHz Processors, 16GB 1600 MHz DDR3 RAM and 2GB nVIDIA Quadro 4000 graphics card. Has a 1TB SATA III Hard Drive, StormDrive Dual Layer CD/DVD Writer and six USB 3.0 and three eSATA Ports. Includes aluminum USB keyboard and optical mouse. In Silver (RAEV202)..... **5599.00**



Pegasus R4 and R6

4- and 6- Bay Hot-swappable Direct Attached Storage with Thunderbolt

The Pegasus R4 and R6 are designed to unleash the raw power of Thunderbolt™ technology. With I/O rates of over 800 MB/s, they allow audio and post production engineers to unleash the raw power of Pegasus, enabled with Thunderbolt Technology. Final Cut users can ingest, edit, and playback, multiple streams of uncompressed 8-bit and 10-bit HD video, while protecting valuable workflows, audio sessions, and other creative media content. Graphic artists utilizing Photoshop and Maya 3D animation can manipulate and archive high resolution graphics with relative ease and lightning fast responsiveness.



- Featuring, two, high performance, 10Gb/s bi-directional channels, and PROMISE enterprise-level RAID 6 engine (features mature error handling schemes for the ultimate in data protection), provides fast, safe, and reliable external storage for protecting music, photos, videos, and other valuable data.

4TB Pegasus R4 (PRPR401US)	Call or Log-on	6TB Pegasus R4 (PRPR601US)	Call or Log-on
8TB Pegasus R4 (PRPR402US)	Call or Log-on	12TB Pegasus R4 (PRPR602US)	Call or Log-on
18TB Pegasus R4 (PRPR6HD18TUS).....	Call or Log-on		

Pegasus J2

World's Fastest and Smallest Thunderbolt™ Enabled Storage

256MB for Mac (PRJ2256GB).....	Call or Log-on
512MB for Mac (PRJ2512GB).....	Call or Log-on
256MB for Windows (PRJ2256GBWIN)	484.00
512MB for Windows (PRJ2512GBWIN).....	872.00

Pegasus J4

2.5" HDD/SSD Thunderbolt™ Enabled Storage

Pegasus J4 Empty Enclosure—no drives (PRJ4US). Call or Log-on
2TB Pegasus J4 (4x 500GB) (PRJ4HD2TBUS)..... Call or Log-on
4TB Pegasus J4 (4x 1TB) (PRJ4USK)..... 728.96



Celerity 4GB & 8GB Fibre-Channel

PCI Express Host Adapters

Available in PCI Express, the Celerity host adapter supports 4 or 8GB Fibre-Channel devices. Choose from quad, dual, or single-channel models. Full-duplex connections support up to 800 or 1600MB/sec per channel.



4GB Single-Channel (ATCTFC41ESOR).....	Call or Log-on
4GB Dual-Channel (ATCTFC42ESOR).....	Call or Log-on
4GB Quad-Channel (ATCTFC44ESOR).....	Call or Log-on
8GB Single-Channel (ATCTFC81EN00).....	Call or Log-on
8GB Dual Channel (ATCTFC82EN00).....	1266.99
8GB FC (SFP) to 8GB SAS/SATA (ATFCBR6500D0).....	Log-on
6 Gbps SAS/SATA PCIe 2.0 Host Adapter (ATESASH680).....	Log-on

FireWire Components

Belkin

3-Port FireWire-400 PCI Host Card (BECFW3PQ).....	27.89
---	--------------

SIIG

FireWire-800 PCI Express Host Adapter (SINNE38012S3)	49.54
FireWire 400 ExpressCard (SINNEC2022S1).....	28.99
2-Port FireWire-400 PCMCIA Cardbus (SINNPCM222S4)	25.99

Sonnet

Allegro FireWire 400 PCIe Card (3-Port) (SOFW400AE)	39.48
Allegro FireWire 800 PCIe Card (3-Port) (SOFW800E).....	56.74
2-Port FireWire-800 ExpressCard/34 Expansion Card	80.24
(SOFW800E34)	
Tango PCIe FireWire 400/USB 2.0 Adapter Card (SOFWUSB2AE)	61.24
FireWire + USB 2.0 ExpressCard/34 Expansion Card	
(SOFWUSB2E34)	46.24



Advantage Series 2.0 Keyboards

In addition to color and icon coded keycaps, they include two USB 2.0 ports and multimedia keys. Premier Pro and Avid Media.

For Adobe Premiere Pro CS6 (BEPS2APPCS6).....	69.95
For Final Cut Pro X (BEAS2AFCPXM)	69.95
For Avid Media Composer (BEAKMCM).....	69.95

DV Keyboard 3.0 for Sony Vegas

Built-in jog/shuttle controller, 2 USB 2.0 ports and 3 ports for the optional NeoLite. (BEKBDV3SV)..... **Call or Log-on**

Professional Series 3.0

Jog/shuttle controller, specialty keys, two USB 2.0 ports, and program-specific, color and icon-coded keycaps. Task light with dual LEDs and a 12-inch flexible gooseneck plugs into any of three power ports.



For Premiere Pro CS6 (BEPS3APPCS6).....	129.95
For Final Cut Pro X (BEPS3FCPX).....	129.95
For Avid Media Composer (BEKBP3AMC)	129.95

KB Covers Keyboard Covers

Final Cut Pro X for Apple Ultra-Thin-109 Keys (KBFCPXAWCC)	28.88
Final Cut Pro X for MacBook (KBFCPXMCC).....	25.95
Final Cut Pro X for MacBook Pro (KBFCPPCC)	29.95
Avid Media Composer f/Apple Ultra Ultra-Thin (KBMCACWC).....	39.95



Application/Editing Keyboards

Grass Valley EDIUS Slim Line PC Keyboard (LOKBGVESLU).....	94.95
Avid Media Composer Slim Line PC Keyboard (LOKBAMCS)	104.95

Keyboard Cover for Apple Ultra-Thin Aluminum Keyboard

Final Cut Pro X (LOFCPXMBS).....	28.95
Media Composer Cover (LOLSMCM89).....	32.95

Keyboards (Apple Ultra-Thin Aluminum)

Avid Media Composer (LOWUSBAMC).....	119.50
Pro Line Digidesign Pro Tools (LOWKDDPT)	119.95
Advance Line Digidesign Pro Tools (LOWPKDDPT).....	99.95
Final Cut Pro (LOWUSBFCP).....	114.95
Final Cut Pro (Extended Keyset) (LOKBUFCP).....	99.95
Advance Line Final Cut Pro X (LOFCXPALKB).....	99.00
Professional Line Final Cut Pro X (LOFCXPPLKB).....	119.00



Shuttle-Xpress Shuttle-Pro 2

NLE Multimedia Controllers

- 5 or 15 programmable buttons for frequently used commands
- Jog/shuttle control knob for frame by frame control



Shuttle-Xpress in Black (COSXB) or Silver (COSX).....	37.99
Shuttle-Pro 2 in Black (COSPRO2) or Silver (COSPRO2S).....	Log-on



Instructional DVDs

Boost your software and hardware knowledge with Class on Demand instructional DVDs.



Complete Training for Media Composer (CLTAMC).....	179.95
Final Cut Express HD Made Easy (CLTFCEHD).....	Log-on
Digital Sports Photography Made Simple (CLDSPMS)	44.95
Color for Digital Artist (CLCDA).....	29.95