

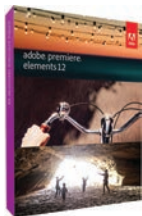
800-947-1186 | 212-444-6686



**Premiere Elements 12**

Video Editing Software

- Drag & Drop HD/SD video editing
- InstantMovie auto-editing
- Color-correction presets & fine-tuning
- Burn HD content to standard DVDs
- Automated sharing to YouTube & Facebook
- Photo Pan & Zoom • Hundreds of effects & transitions



#ADPE12WM (Mac/Windows) .....**82.99**

**Adobe Photoshop & Premiere Elements 12**

Software bundle that combines all the tools you need to organize, edit, enhance, and share videos and photos with the world. The Elements versions borrow many of the best features from Adobe's industry-leading professional software, while adding automated tools.



#ADPSPE12MW .....**120.65**

**Media Composer 7**

For Mac and PC

The industry-standard, provides 64-bit performance, easy-to-use video editing tools, built-in effects, transitions, and streamlined HD, file-based, and stereo 3D workflows. Also includes Avid FX; Avid DVD and Sorenson Squeeze



#AVMC7DEU (with dongle).....**1149.00**  
 With Software Licensing (AVMC7SLWMEU).....**874.95**

**CyberLink Director Suite 2**

Video, Audio, Photo, Color Editing Suite )

Combines the PowerDirector 12 video editing system with ColorDirector 2, AudioDirector 4, and PhotoDirector 5 into a complete video/audio/photo editing and color grading solution. The programs work seamlessly with one another, allowing for a round-trip workflow. For Windows only.



#CYDIRSTE2 .....**244.99**

**Blackmagicdesign Davinci Resolve 9 Color Correction Software**

The name behind more feature films, TV commercials and episodes, documentaries, and music videos than any other grading system. There are thousands of colorists worldwide who understand the performance, quality and workflow of DaVinci and love it as their trusted partner in creativity.



#BLDRCCS9 .....**945.25**

**Final Draft Final Draft 9**

Script Writing Software

- #1 selling program for writing movie scripts, TV episodes and stage plays.
- Combines powerful word processing with professional script formatting in one easy-to-use package.
- No need to learn about script formatting rules – it automatically paginates and formats your script to industry standards as you write.



#FISWS .....**249.95**  
 #FISWSE (Academic Edition).....**129.95**

**grass valley EDIUS Neo 3.5**

Simplified version of EDIUS Pro 7 for users that don't need all the features of the Pro version. Nevertheless, Neo 3.5 is highly multi-featured and supports high-resolution and 3D stereoscopic editing. Neo won't stop to render after every little change. It also has the ability to mix formats. Add video, audio, and photo files in various formats to your timeline and work with them all at the same time.



#GRAEN3.5RB .....**179.99**

**grass valley EDIUS Pro 7 Editing Software**

- Real-time editing / effects / conversion
- 10-bit color correction
- 3D Stereoscopic Editing
- QuickTime codec for export to Win or Mac
- Export sequence with Alpha Channel
- Filmstrip view in timeline
- Proxy and Hi-Res workflow modes
- Multicamera editing of up to 16 sources



#GREP7RB) .....**609.99**  
 #GREP7BE (Educational Edition) .....**Call or Log-on**

**livestream Studio**

Live Production Switcher

Enables live streaming video to any Real Time Messaging Protocol compatible device, plus simultaneously output to desktop browsers, iOS and Android devices. Transforms your PC into a live production control room, with live video switching for up to 5 HD inputs, full frame-rate multi-view, graphic overlays and cut/fade transitions. (LILSS).....**799.00**



**RED GIANT**

**PluralEyes**

Imports your footage into its own timeline and automatically syncs the video from a single or multiple cameras to simultaneously recorded audio. Automatic syncing is accomplished by the software lining up the audio waveforms of the audio and video files, so for PluralEyes to work you must record an audio scratch track with your video footage.



#REPLAVSS .....**179.10**

**SONY Vegas Pro 12**

HD Video & Audio Editing/Blu-ray Disc Creation

- GPU-accelerated effects & rendering
- Stereoscopic 3D editing
- Blu-Ray authoring w/DVD Architect Pro
- Unlimited audio tracks and 5.1 mixing
- Dolby Digital Professional Encoder
- DSLR video XDCAM, NXCAM, AVCHD, RED & 4K Support



#SOVP12 .....**499.00**

**sorensonmedia. Squeeze 9**

Video Encoding Software for Mac & Windows

- High quality codecs and professional pre-processing creates clearer and crisper videos.
- Compatible with 30 input and output video and audio formats
- Dozens of quality filters



#SOS9S .....**519.95**  
 Squeeze 9 Lite Video Encoder (SOS9LS).....**265.00**

**TELESTREAM**

**Wirecast Studio 5**

All-in-one live streaming software, Wirecast Studio 5 supports an unlimited number of input sources including audio, video, graphics, and more. 35 layers of compositing, transitions, titles, and chroma key give your broadcasts a polished look. Broadcast multiple application windows from the same computer, as well as stream your desktop screen in Full HD at 60fps.



For Mac (TEWC5TM) or Windows (TEWC5TW).....**495.00**

**TIFFEN**

**Dfx v3**

Digital Filter Suite

Offers a palette of over 2,000 definitive digital filters with effects that simulate Tiffen's world-reknown optical filters, plus much more! Provide unmatched performance, flexibility, and control. Complete standalone for Avid, FCP, After Effects and Premiere.



#TIDFXFCV3 .....**Call or Log-on**

**VIDEO COPILOT**

**Action Essentials**

2K Resolution Action Stock Footage

- 20 categories of FX
- 500 pre-keyed high definition elements
- 2.5x more resolution in each element
- Built-in alpha channels
- 20 action sound effects
- Detailed video thumbnails
- Over 90% live action footage
- Includes 60-min. Training Video



#VIAE22 .....**224.99**

## SD &amp; HD Mini-Converters

- Industry standard stand-alone converters
- Complete range of HD and SDI solutions
- Bullet-proof reliability and world-class support



- ADA4:** 4-Channel Audio A/D & D/A Converter (AJADA4Q) .....**Log-on**
- D4E:** SDI to NTSC/PAL encoder (AJD4EQ) .....**Call or Log-on**
- D5DA:** SD-SDI DA (AJD5DAQ) .....**Call or Log-on**
- D5D:** Composite / S-Video to SDI Converter (AJD5DQ) .....**Log-on**
- D5CE:** SDI to component converter (AJD5CEQ) .....**Log-on**
- D10AD:** Component or composite to SDI (AJD10ADQ) .....**Log-on**
- HA5:** HDMI to SDI/HD-SDI converter. Provides 2 SDI/HD-SDI outputs and supports long HDMI cables on the input. (AJHA5Q).....**Log-on**
- HDP2:** HD-SDI/SDI to DVI-D & Audio Converter (AJHDP2Q).....**Log-on**
- HD5DA:** 1x4 HD-SDI Distribution Amplifier (AJHD5DAQ).....**Log-on**
- HI5:** HD-SDI/SDI to HDMI video and audio converter for driving HDMI monitors (AJHI5Q).....**Call or Log-on**
- 3GM:** HD Mini-Converter (AJ3GMQ) .....**Log-on**
- HI5 3G:** HD-SDI/SDI to HDMI Converter (AJHI53GQ).....**Log-on**
- HI5-3D:** HD-SDI Multiplexer to HDMI 1.4a and SDI Converter (AJHI53DQ) .....**Log-on**
- HI5-4K:** 4K SDI to HDMI Converter (AJHI54K) .....**595.00**
- 4K2HD:** 4K/UHD to 3G/HD/SD-SDI and HDMI Downconverter (AJ4K2HD) .....**795.00**
- HD10DA:** HD/SD 1x6 serial digital DA (AJHD10DAQ) .....**Log-on**
- HD10A-Plus:** Analog to HD/SD-SDI (AJHD10APLUS) .....**665.00**
- HD10AVA:** Analog Audio/Video to HD/SD-SDI Converter (AJHD10AVAQ).....**Log-on**
- HD10AM:** HD/SD 8-channel AES embedder/disembedder (AJHD10AMQ) .....**Call or Log-on**
- HD10AMA:** HD/SD 4-Channel Analog Audio Embedder / Disembedder (AJHD10AMAQ) .....**Call or Log-on**
- HD10CEA:** HD/SD-SDI to analog video (AJHD10CEAQ).....**Log-on**
- HD10MD3:** HD Mini Digital Downconverter (AJHD10MD3Q).....**Log-on**
- HD10C2:** HD-SDI and SDI D/A Converter (AJHD10C2Q).....**Log-on**
- 3GDA:** 1x6 3G/HD/SD Reclocking DA (AJ3GDAQ) .....**Log-on**
- UDC:** Up/Down/Cross Mini-Converter (AJUDCQ) .....**Log-on**
- FIDO-TR:** SD/HD/3G SDI / Fiber Transceiver (AJFIDOTRQ).....**Log-on**
- FIDO-R:** Optical Fiber to SD/HD/3G-SDI (AJFIDORQ).....**Log-on**
- FIDO-T:** SD/HD/3G-SDI to Optic Fiber (AJFIDOTQ).....**Log-on**
- FIDO-R-ST:** ST Fiber to SDI Converter (AJFIDORSTQ).....**Log-on**
- FIDO-T-SC:** SDI to SC Fiber Converter (AJFIDOTSCQ).....**Log-on**
- FIDO-T-ST:** SDI to ST Fiber Converter (AJFIDOTSTQ).....**Log-on**
- FIDO-2T:** Dual channel SDI to Fiber converter (AJFIDO2TQ).....**Log-on**
- FIDO-2R:** Dual channel Fiber to SDI converter (AJFIDO2RQ).....**Log-on**
- FIDO-R-SC:** SDI/Optical Fiber Converter (AJFIDORSCQ).....**Log-on**
- GEN10:** HD/SD Sync, Blackburst Generator (AJGEN10Q).....**Log-on**
- ROI:** DVI to SDI Mini-Converter (AJROI).....**Log-on**
- RMB-10:** Brackets for Mini-Converters (AJRMB10).....**Log-on**
- RMB-RO:** Rackmount Bracket (AJRMB).....**Log-on**
- T-TAP:** Captures 10-bit SD/HD/2K video from a Thunderbolt-enabled computer and outputs it via SDI and HDMI (AJTTAP).....**Log-on**
- V2Analog:** HD/SD-SDI to Analog (AJV2ANALOG) .....**329.95**
- V2Digital:** Analog to HD/SD-SDI (AJV2DIGITAL) .....**329.00**
- KUMO:** Remote Control Panel (AJKUMOCPP) .....**Call or Log-on**



## KONA LHe PLUS HD-SDI / Analog Video Capture &amp; Playback PCI Card

Broadcast-quality PCI card for Mac and Windows systems, the LHe PLUS offers HD/SD-SDI input, dual SDI outputs, and a full complement of analog video and audio inputs/outputs via included breakout cable. The card features genlock input and performs 10-bit down conversion from HD to SD. Because conversion is hardware-based, it's available upon both capture and playback. BNCs for analog component, composite, and S-Video input and output to support an extremely wide variety of video systems. (AJKONALHEP).....**Log-on**



## KONA LHi SD/HD Capture Card for Macintosh

Allows analog cameras and VCRs alongside 3G SDI and HDMI v1.3a enabled products to interface to Mac OS X hardware, with integrated support for Final Cut and other QuickTime applications. Steps-up from the KONA LHe with 3G HD/SD SDI I/O, HDMI v1.3a I/O, LTC input (on reference input), and realtime SD to HD up-conversion, HD to HD cross-conversion and HD to SD down-conversion.

#AJKONALHI .....**Call or Log-on** #AJKLHIBOX (Breakout Box for KONA LHi).....**Call or Log-on**

## KONA 3G Capture Card for Uncompressed SD, HD, Dual Link HD, 2K and 3G

Steps up from the Kona LHi with 2 SD/HD/3G SDI inputs/outputs, HDMI 1.4a support for 3D workflows, 16-channel SDI embedded audio I/O, and up to 16-channel AES digital audio I/O (8 with breakout cable or 16 with optional K3G-Box). Also features separate LTC input and output ports, master or slave configurable RS-422 control port, internal hardware keyer and 2K video format support.

#AJKONA3G .....**Log-on** K3G Breakout Box (AJK3GBOX) .....**Call or Log-on**

## ioExpress Portable Video Audio I/O Interface

Interface for mastering and inexpensive monitoring when working with Apple ProRes 422 and 422 HQ, XDCAM HD, DVCPRO HD, and more. Features HD/SD-SDI I/O, HD/SD component output, LTC I/O, 2-channel RCA audio, and RS-422 in a durable and portable device.

ioExpress Portable Video Audio I/O Interface (AJIOEXPRESSE) .....**Call or Log-on**  
 io Express Desktop Video Audio I/O Interface (AJIOE).....**Call or Log-on**



## Io XT Professional 3G-SDI/HDMI Capture &amp; Playback Device with Thunderbolt



Compact and portable, the Io XT features 3G/Dual Link/HD/SD-SDI, component analog and HDMI connectivity, to bring desktop-level power to any Thunderbolt-enabled Mac, with full uncompressed HD and SD 4:2:2 and 4:4:4 capable video and audio connectivity. It also offers hardware-based up/down/cross conversion for HD and SD formats,

RS-422 control and switchable reference and LTC input/output. (AJIOXT) .....**Call or Log-on**

## Ki Pro • Ki Pro Rack • Ki Pro Mini

## Digital Disk and Compact Field Recorders

The tapeless Ki Pro records 10-bit ProRes 422 files from virtually any video and audio source – via SD/HD-SDI, HDMI, and analog inputs – and lets you immediately edit them in Final Cut Pro X. On a table, in a bag, or mounted between a camera and tripod, Ki Pro records hours to a removable storage module with built-in FireWire 800 or to 34mm ExpressCard Flash. Built-in Wi-Fi and Ethernet allows control via web or iPhone. Used for on-set monitoring, provides instant access to multiple displays. Otherwise the same, the Ki Pro Rack comes in a 1RU format while the Ki Pro Mini uses CompactFlash cards emphasizing portability when size matters and conversion and I/O option diversity aren't needed.



- Ki Pro:** With 250GB HDD Storage Module and AC Adapter with 4-pin XLR connector (AJKIPROR0).....**Log-on**
- Removable 250GB HDD storage module (AJKISTOR250R).....**Log-on** Removable 500GB HDD storage module (AJKISTOR500R).....**Log-on**
- KiStor 500GB Hard Disk Drive Storage Module with USB 3.0 (AJKISTOR500L) .....**Call or Log-on**
- KiStor 750GB USB3 Storage Drive for Ki Pro & Ki Pro Rack (AJKISTOR750L).....**Call or Log-on**
- Ki-STOR500-R0 Ki Pro 500GB 7200 RPM HDD Storage Module (AJKISTOR500R).....**Call or Log-on**
- Ki Stor Dock:** External docking station provides both Thunderbolt and USB 3.0 connections (AJKISTORDOCK) .....**Call or Log-on**
- Ki Pro Mini:** Includes AC Adapter with 4-pin XLR connector (AJKIPROMINR).....**Call or Log-on**
- Universal Mounting Plate for Ki Pro Mini (AJKIMINIPLAT).....**Log-on** Tabletop Stand for Ki Pro Mini (AJKIMINISTAN).....**Call or Log-on**
- Ki Pro Rack:** Records direct onto optional HDD/SSD storage modules (AJKIPRORACK) .....**Call or Log-on**
- Ki Pro Quad:** 4K/Quad HD/2K/HD Solid State Recorder. From camera capture to editorial and monitoring, the Ki Pro Quad unites the components of a 4K workflow in a compact, powerful and affordable package (AJKIPROQUAD).....**Call or Log-on**
- Pak256 256GB SSD for Ki Pro Quad (AJPAK256).....**Call or Log-on** Pak512 512GB SSD for Ki Pro Quad (AJPAK512) .....**Call or Log-on**
- Desktop Stand for Ki Pro Quad (AJKIQUADSTAN).....**75.00** Pak Dock for Ki Pro Quad Pak SSDs (AJPAKDOCK).....**359.95**

## FS1 HD/SD Audio/Video Frame Synchronizer and Converter



Flexible "anything in, anything out" architecture, the FS1 simultaneously works with HD and SD video – in full 10-bit broadcast quality video and 24-bit audio. Supports virtually any input/output— analog or digital, HD or SD. Up/down convert between SD and HD, as well as cross-convert between HD formats. Supports 8-channel AES, balanced analog, or 16 channel embedded audio with full flexibility and audio processing controls. (AJFS1).....**Call or Log-on**

**FS2:** Dual Channel Frame Synchronizer and Converter (AJFS2) .....**Call or Log-on**



800-947-1186 | 212-444-6686



**ADVC55** Compact Analog / Digital Converter

- Connects VHS, Hi8, and other analog video equipment to DV camera or editing system.
- Capture analog video into FireWire (IEEE1394)-equipped editing computers.
- Composite (RCA) and S-Video input (NTSC/PAL compatible)
- Unbalanced stereo audio input



#GRADVC55.....**Call or Log-on**

**ADVC110**

Bi-Directional Analog / Digital Video Converter

- Portable converter for capturing and outputting analog video to any Firewire (IEEE1394) equipped notebook or desktop computer.
- Composite (RCA) and S-Video input/output
- Unbalanced stereo audio input and output



#GRADVC110 .....**174.95**  
 PSUV5 Power Supply for ADVC-55/110 (GRPSADVC110).....**35.00**

**EDIUS Pro 7**

NLE System with STORM 3G Board

Bundles EDIUS Pro 6.5 software with the STORM 3G I/O board for 3G-SDI editing and monitoring on an HDMI display.



- Board supports 3G-SDI-based editing and tapeless workflows; lets editors preview projects in real time, using HDMI displays.
- Reference input support for blackburst and tri-level sync
- Software features real-time editing and conversion, color correction tool that supports 10-bit color depth, 2K/4K support, a free shape mask filter and 16-camera multicam editing.

#GRS3GP7 .....**1729.99**

**VisTitle 2.0** 3D Title Effects for EDIUS (MVT2).....**284.99**



**Artist Color**

Compact Color Correction Panel

Hands-on control of all color correction and grading tasks — with great precision and speed. You get the superior feel and control of high-end grading hardware at a fraction of the cost, plus unparalleled access to all software color functions. And with nine programmable Soft Keys, you can customize the surface to speed your workflow. (AVACCSURF).....**1359.95**



**Artist Transport** Compact Media Controller

Quickly navigate and edit projects with just one hand. Get the features and tactile feel of a high-end console transport section in an affordable, portable solution that's ideal for laptop use. Connects to your system via Ethernet cable, and interfaces with a large array of available audio and video software via EUCON, HUI, and Mackie Control Protocols. #AVATP .....**375.00**



**ADVC-HD50** Realtime HDMI-to-HDV Conversion

Converts uncompressed HD video and audio from HDMI devices to HDV format then outputs a FireWire connection for use in a non-linear editing system. Sleek and portable, it requires no drivers of software, and is compatible with PC and Mac-based editors. Perfect for anyone who needs HDMI ingest without internal hardware. (GRADVCHD50)...**Log-on**



**ADVC G1** Any In to SDI Multi-Functional Converter / Upconverter with Frame Sync

1/3 RU box with dual 3G/HD/SD-SDI outputs, the ADVC G1 can convert and/or upconvert sources to HD/SD-SDI (with 1.5 and 3 Gb/s support) via its HDMI, DVI, component, composite, and S-Video inputs. Also functions as an audio embedder, capturing sources via its AES/EBU and analog audio inputs and embedding them for output via SDI. Can also serve as a frame synchronizer for audio inputs, eliminating the need for a separate frame sync.



#GRADVCG1 .....**Call or Log-on**

**ADVC G2** HDMI & SDI to Analog & SDI Converter / Downconverter with Frame Sync



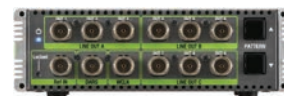
1/3 RU with HDMI and 3G/HD/SD-SDI inputs, plus a BNC for a reference signal input. Outputs comprise a full complement of analog connections (including separate audio) and two BNCs that serve as dual 3G/HD/SD-SDI outputs. The ADVC G2 can serve as a downconverter and a frame synchronizer for SDI (via the reference signal input). It can also de-embed audio from the HDMI and SDI inputs so that it can be monitored and mixed separately as AES/EBU and/or analog signals. With analog component, composite, and S-Video outputs, the ADVC G2 can be used as a monitoring device for SDI and HDMI signals. It can also be used to convert HDMI to 3G/HD/SD-SDI, with support for formats up to and including 1080/60p.

#GRADVCG2 .....**Call or Log-on**

**ADVC G3:** Dual SDI to HDMI Converter / Multiplexer with 3D Support (GRADVCG3).....**Call or Log-on**

**ADVC G4** Sync Generator with Reference

Compact, robust 1/3 RU sync generator that puts out nine output signals and supports all major SD (NTSC and PAL) and HD formats. Outputs can be configured in groups of three as SD or HD signals, so you can have 6 HD outputs and 3 SD outs, for instance. It also features a 48 kHz wordclock and a reference input, which makes it compatible with systems that require more than nine outputs. The reference in also enables the device to live in a secondary room and serve as an extension from the main system, if necessary. (GRADVCG4).....**Call or Log-on**



**VideoHub**

Broadcast-quality 3 GB/s SDI Routing Switchers

Eliminate manual video patching forever. Videohub lets you connect all the equipment in your facility and change connections from your computer. Broadcast-grade routers, they offer auto switching SD, HD, 3Gb/s SDI, redundant power and re-clocking. Manual patching limits SDI cable lengths, and is often very complicated to understand, plus patch cables wear out quickly, so you get glitches in video. Videohub eliminate these problems because everyone is permanently connected, and no cables need to be physically changed. They re-clock SDI video for long cable lengths so you always get reliable video. Videohub connects to any computer via USB and is then shared over your local network. Software panels run on Windows and Mac OS X.



**Micro Videohub:** Perfect for locations where space really counts, such as OB trucks. Includes 16 x 16 SDI routing, auto detection for SD, HD and 3 Gb/s HD-SDI, re-clocking, and built in ethernet, USB and serial router control interfaces. (BLMVH).....**1420.25**

**Studio Videohub:** Compact, features 16 inputs, 32 outputs and 16 deck control ports all packed into a 2RU size less than an inch thick. (BLVHUBST).....**2845.25**

**Smart Videohub:** Same as the Micro Videohub (above) plus adds a built in control panel. Now you can change all routing with the push of a button (BLSVH) .....**1895.25**

**Compact Videohub:** Perfect when you need a bigger router in a small size, like post facilities and broadcast trucks. Includes 40 x 40 SDI routing all packed into a 2RU size. (BLCVH) .....**2845.25**

**Broadcast Videohub:** 72 inputs, 144 outputs, 72 deck control ports, and audio switching in a single unit. (BLBCVH) .....**14245.25**



**Smart Control:** Control panel for all your monitors and decks so you can set the input with a single button press. Each button can be set to a different router input and you can set single or multiple router outputs. Connects to Videohub via Ethernet (BLSC) .....**470.25**

Videohub Master Control (BLVHMASTCNTR).....**660.25**

**DVI Extender** 3 Gb/s SDI Monitor Extender

Extend the DVI-D connection to your computer monitor via SDI cables. Connect your computer displays anywhere in your facility, and to more than one monitor when using any 3 Gb/s SDI router. Also works as a regular DVI to SD/HD-SDI video converter. (BLHDLEXTDVI).....**375.25**



Blackmagicdesign

**Intensity Pro • Intensity Shuttle**SD/HD Capture and Playback for  
HDMI and Analog Video

Mac and PC compatible, Intensity Pro offers HDMI, analog component, composite (NTSC/PAL) and S-Video capture and playback. Instantly switch between HD and SD. Supplied break-out cable includes analog RCA stereo audio I/O and S/PDIF audio output.



Plug-in Intensity Shuttle and get access to 10-bit HDMI, analog component, composite and S-Video capture and playback. Inputs are on one side, and outputs on the other. Powers via USB 3.0 connection so no need for power supplies.

**Intensity Pro (BLIP) or Intensity Shuttle (BLIS).....ea. 189.05**

**Intensity Shuttle with Thunderbolt (BLIST) .....227.05**

**Intensity Extreme HDMI & Analog via Thunderbolt (BLIE) ...284.05**

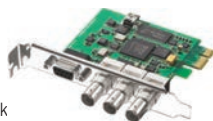
**Breakout Cable for Intensity Pro (BLCIP) .....42.75**

**DeckLink SDI**

SD/HD-SDI Editing Card

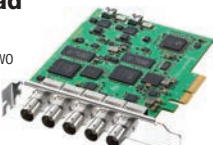
Combines highest quality 10-bit SD/HD-SDI capture and playback with high-end features such as black burst/HD tri-sync reference input, and RS-422 deck control. It can instantly switch between SD-SDI and HD-SDI formats, and includes 8 channels of embedded SDI audio support, so all video and audio connections are made with a single BNC type SDI video cable.

**#BLDLSDI .....280.25**

**DeckLink Duo • Quad**

Two completely independent capture and playback streams via two SDI inputs, and two SDI outputs plus a common tri-sync/black burst reference. Perfect for servers where there are multiple streams or simultaneous capture and playback per system. (BLDLD).....**470.25**

DeckLink Quad provides four independent DeckLink capture cards with broadcast grade multi-channel SDI capture and playback, each with bypass relays, watchdog timer, black burst and tri-level genlock for locking to sources of any frame rate—all designed into a single PCI Express card. (BLDLQ).....**945.25**

**DeckLink Studio 2**

SD/HD-SDI, HDMI &amp; Analog Editing Card



Connections for SDI, HDMI, analog component (BNC x3), composite (BNC) and S-Video, so all types of equipment can remain connected without recabling. SD only output via

a built in hardware down converter even when running in HD. SD down converted output lets you monitor work in both SD and HD at the same time. Includes 4 channels of balanced analog audio, as well as 2 channels of AES/EBU digital audio. Outputs can be switched to provide 6 channels of digital audio output.

**#BLDLKSTUDIO.....660.25**

**DeckLink Studio Breakout Cable (BLCDS).....118.75**

Blackmagicdesign

**HyperDeck Shuttle Video Recorder**

Records uncompressed 10-bit HD and SD video as QuickTime files from any SDI- or HDMI-enabled camcorder. Extremely compact, the recorder uses optional 2.5" SATA SSD drives for data storage. By bypassing the camera's compression, you get the highest-quality output possible from camcorders that typically record video as highly compressed HDV, AVCHD, or another similar codec. (BLHDSH) ...**249.95**



**HyperDeck Shuttle 2 SSD Video Recorder (BLHDSH2) ...327.75**

**HyperDeck Shuttle Mounting Plate (BLHDSMP).....94.05**

**H.264 PRO Recorder**

Connection via USB, delivers professional encoding from SDI, HDMI, analog component/ composite and balanced audio. Capture from professional broadcast decks directly to SD and HD H.264 files. Capture old or new programming content into the same file format used on the web, iPad, iPod, iPhone, Apple TV, and YouTube.

**#BLH264PR.....470.25**

**Video Recorder**

Capture video direct to H.264 video files for your iPod, iPhone, YouTube and even full resolution video backups. Plugs directly into your computer's USB and includes easy to use software. Get the highest quality video capture from any composite or component source. Saves time by capturing into the native file format of your mobile device. It can even copy to iTunes ready for syncing. (BLVR) .....**141.55**

**HDLink Pro DVI • HDLink Pro 3D DisplayPort Advanced HD Monitoring Solutions**

HDLink Pro DVI includes amazing quality DVI and HDMI monitoring with 6 channels of RCA analog audio out, 3D lookup tables, Dual Link 3 Gb/s SDI input, single link 3 Gb/s DI loop thru output, and support for 24" displays for HD monitoring and 30" displays for real time 2K monitoring. SDI monitoring solution for deep bit depth, HDLink Pro 3D DisplayPort supports full 3D stereoscopic and HDMI 1.4. Get the highest quality in both 4:2:2 and 4:4:4. Perfect for SD, HD and feature film 2K monitoring.

**HDLink Pro DVI (BLHDLVPRO) or HDLink Pro 3D DisplayPort (BLHDLPRODIP).....470.25**

**DeckLink 4K Extreme PCI Express Capture & Playback Card**

All the features of the DeckLink HD Extreme 3D card (above), plus adds 4K playback that is four times the resolution of 1080HD video and a much faster PCI Express Gen 2 connection. The dual link 3 Gb/s SDI allows four times the resolution of regular HD video, using only two BNC SDI cables. The dual link 3 Gb/s SDI connection for 4K is a new standard pioneered by Blackmagic and takes the old quad link HD-SDI connections and multiplexes them to reduce cable count and router cross points required to route 4K signals. DeckLink 4K Extreme also includes all the latest technologies and video connections, such as HDMI 1.4 frame packing 3D, which allows full resolution frames for the left and right eyes down the single HDMI connection so each eye gets a full resolution image. (BLDL4KEXT).....**945.25**

**MultiDock Super Fast Thunderbolt™ Disk Dock**

Rack-based dock that holds up to four SSD or HDD disks and let you transfer from them to your computer via a single Thunderbolt connection. Four cartridge-style disk slots each feature an independent SATA interface chip for SSDs and HDDs. Work with the disks individually or stripe them together in an array by Thunderbolt. Can even be used as a disk array when adding multiple disks and striping with your computers disk utility software. Built-in power supply allows long Thunderbolt or optical fiber based Thunderbolt cables. (BLMULTIDOCK) .....**565.25**

**HyperDeck Studio 2 Uncompressed HD Disk Recorder**

File-based deck with the functionality and control of professional tape decks. It records uncompressed video with 4:2:2 color sampling at 10-bit in Quicktime format,

and also records video using either ProRes or DnXHD codecs. With two SSD slots, you can record almost endlessly as one SSD becomes full, recording automatically continues on to the other. Equipped with one 3G-SDI input and three SD/HD/3G-SDI outputs plus a loophrough output, and HDMI input/output. 1RU high, HyperDeck Studio 2 has an illuminated front panel button control and a jog/shuttle wheel for analog scrubbing. It offers RS-422 control, and the unit itself can be controlled via USB or Ethernet. An integrated LCD on the front panel allows you to monitor the video, and display timecode and transport information. (BLHYDKS2).....**945.25**

**HyperDeck Studio Pro 2 Uncompressed HD Disk Recorder**

Stepping up, the HyperDeck Studio Pro 2 features one 6G-SDI I/O for 4K signals, and three SD/HD/3G-SDI inputs and outputs. It supports Ultra HD 4K via HDMI. It also features analog component input/output with analog audio input/output and timecode input/output. It also incorporates a Thunderbolt port, for connecting to a computer. (BLHYDKSP2).....**1895.25**





800-947-1186 | 212-444-6686



**UltraStudio Express** Thunderbolt-powered SDI and HDMI Capture and Playback

Capture and playback device, it can also up/down/cross convert the resolution as the footage is being passed to the computer. Last, you can connect a top-quality HDMI monitor and monitor the footage you captured in the best resolution possible so to perform color correction in minute precision. Features built-in SD/HD SDI, HDMI and Thunderbolt connections. It comes with two breakout cables with composite, component, S-Video, RCA audio, AES/EBU XLR audio, sync input, Bi and Tri-Level Sync and RS422 connections. Connects to a camera via SDI or HDMI and to a computer by Thunderbolt.



UltraStudio Express (BLUSEXPRESS) .....	470.25
UltraStudio SDI (BLUSSDI).....	375.25
UltraStudio Pro (BLUSP) .....	850.25

**UltraStudio 4K Thunderbolt 2** Rack-based Capture & Playback for Thunderbolt

Table-top or rack-mounted, UltraStudio 4K features QuickTime and DPX codec compatibility, and compressed and uncompressed transfer capacity. Captures from your camera at up to 2K resolution, but can play back at up to 4K, meaning that any 4K footage you may have on your computer from another input source, you can output for monitoring in full 4K on a separate display. 4K is handled by the the Dual Link 3 Gb/s SDI and HDMI outputs. Also features an integrated color LCD, up/down/cross conversion, built-in SD Keyer, and support for pro audio. (BLUS4KT2) .....



**UltraStudio Mini Monitor • UltraStudio Mini Recorder**

Pocket sized SDI/HDMI Capture or SDI/HDMI Playback Devices

UltraStudio Mini Monitor and Mini Recorder feature 3 Gb/s SDI and HDMI connections plus high speed Thunderbolt technology. Extremely portable and pocket sized, they are powered by their Thunderbolt connections so they can be operated from a computer's battery or power source. They support all common SD/HD formats for incredible quality video up to 1080p60. UltraStudio Mini Recorder is designed for recording SDI and HDMI video while UltraStudio Mini Monitor is designed for playing back SDI or HDMI video.



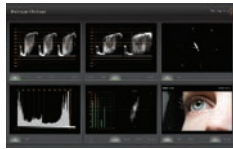
UltraStudio Mini Recorder (BLUSMINIREC).....	137.75	UltraStudio Mini Monitor (BLUSMINIMON) .....	137.75
DeckLink Mini Recorder (BLDECKLINKMR).....	137.75	DeckLink Mini Monitor (BLDECKLINKMM) .....	137.75

**UltraScope**

Broadcast accurate PC-based scopes, they are perfect for master monitoring, edit suites, color correction and equipment rooms.

**UltraScope:**

PCI Express card and software, UltraScope works with a low cost PC and display. Detects between SD, HD and 3Gb/s HD-SDI video and includes BNC SDI inputs as well as optical fiber SDI inputs. (BLUS).....



**Pocket UltraScope:**

Portable version of the PCI-card UltraScope, and is designed for location shoots using a USB 3.0-compatible laptop. Same great tools as the UltraScope, automatically detects an SD, HD, or 3Gbps SDI signal and converts it to USB 3.0.



#BLPUS .....	565.25
--------------	--------

Smartscope Duo 4K: 3RU rack mount unit with Dual 6G-SDI Monitors (BLSSD4).....	945.25
--	--------

**ATEM Production Switchers**

Broadcast grade switchers, the ATEM family include powerful features built in a familiar M/E setup that's fast and easy to use. They feature fully digital 10-bit design, broadcast SDI based design plus loads of HDMI connections. You get the highest quality available from cameras, servers and CGs with true 10-bit video quality maintained throughout the entire signal path. Get better chroma keying and seamless layering from HDMI and SDI sources. Even the analog video inputs/outputs feature low noise AD converters for incredible analog quality.



ATEM 1 M/E Broadcast Panel (BLATEM1) .....	4745.25	ATEM Television Studio Production Switcher (BLATS) .....	945.25
ATEM 2 M/E Broadcast Panel (BLATEM2).....	14245.25	ATEM Camera Converter (BLACC).....	565.25
ATEM 1 M/E Production Switcher (BL1MEPS).....	2370.25	ATEM Studio Converter 2 (BLATEMPSTUC2) .....	1895.25
ATEM 2 M/E Production Switcher (BL2MEPS).....	4745.25	GPI and Tally Interface (BLGPIT).....	470.25
ATEM Production Studio 4K Live Switcher (BLATEMPSTU4K).....	1610.25		
ATEM Studio Converter (BLASC) .....	1895.25	ATEM 1 M/E Production Studio 4K (BLATEM1ME4K).....	2370.25
SmartView Duo Dual 8" LCD Monitors (BLSVD).....	470.25	SmartView 17" HD Studio Monitor (BLSVHD).....	850.25

**Teranex 2D Processor** Standards and Video Format Converter

Features high-quality de-interlacing, up and down conversion, SD and HD cross conversion, SD and HD standards conversion, automatic cadence detection and removal (even with edited content), noise reduction, adjustable scaling, aspect ratio conversion, and timecode conversion. Accompanying video is 16 channel audio conversion capacity. (BLTER2D422) .....



Teranex 3D Processor (BLTER3D444).....	3795.25
--	---------



**Mini Converters**

Blackmagic's Mini Converters include auto SD/HD switching, redundant input, AES/EBU and analog audio on 1/4" jacks, combined with 3 Gb/s SDI technology.



- Analog to SDI:** Converts analog HD/SD component, NTSC, PAL or S-Video to SDI with the choice to embed SDI audio from balanced AES/EBU or analog audio inputs. (BLASDIMC)..... 280.25
- SDI to Analog:** SDI to analog HD/SD component, composite video, plus balanced AES/EBU and analog audio. (BLSDIAMC)..... 280.25
- Audio to SDI:** Embed 4 channels of analog audio or 8 channels of AES/EBU digital audio into SDI (BLCOMCAUS)..... 470.25
- SDI to Audio:** De-embed 4 channels of analog audio or 8 channels of AES/EBU digital audio (BLCOMCAUS)..... 470.25
- SDI to HDMI:** Convert from SDI to HDMI with embedded audio, plus balanced AES/EBU or analog audio. (BLSDIHDMMIM)..... 280.25
- HDMI to SDI:** You can also choose to embed audio from balanced AES/EBU or analog audio inputs.(BLCOMCHS)..... 280.25
- SDI To HDMI 4K (BLCOMCAH4K).....** Disc
- Optical Fiber:** Convert SDI to optical fiber and vice versa. Switches between SD, HD, 3Gb/s HD-SDI (BLCOMCOF)..... 280.25
- Optical Fiber 4K (BLMCOF4)..... 470.25
- DI to HDMI 4K (BLMCSDIHDMI4)..... 470.25
- SDI Multiplex 4K (BLMCSDIMULT4)..... 470.25
- UpDownCross:** Convert between SD to HD; converts 720p to 1080i or vice-versa; auto SD/HD switching (BLMCUDC)..... 470.25
- Sync Generator:** Tri-level HD or SD black burst (BLSGMC)..... 280.25
- SDI Distribution:** 1x8 SD/HD/3G- SDI DA (BLMCSDD)..... 280.25
- Broadcast Converter:** 1RU chassis performs bi-directional conversion between SDI and analog/HDMI signals (BLBCC)..... 945.25
- Power Supply for Mini Converters (BLPSMC)..... 56.05
- Connectronics:** 1U Rackmount (COBLACKRACK1)..... 71.95

**Battery Converters**

- HDMI to SDI Battery Converter (BLCONVBATTHS)..... 280.25
- SDI to HDMI Battery Converter (BLCONVBATTSH)..... 280.25

**Mini Converter Heavy Duty**

- Machined from a solid block of aircraft-grade aluminum, they are super-strong, and can even be run over by a truck and still work.
- Analog to SDI (BLMCONHDASDI)..... 327.75
- SDI to Analog (BLMCONHDSIA)..... 327.75
- HDMI to SDI (BLMCONHDHDSI)..... 327.75
- SDI to HDMI (BLMCONHDSHDI)..... 327.75

**OpenGear Converter**

OpenGear Converters give you a range of conversion while providing the cost savings of an open standard combined with centralized network control and monitoring. Same as their respective Mini Converters except in card form.



- SDI to Analog (BLCOOCSA).....** 470.25
- Analog to SDI (BLCOOCAS).....** 470.25
- HDMI to SDI (BLCOOCHS).....** 470.25
- SDI to HDMI (BLCOOCSH).....** 470.25
- SDI to Audio (BLCOOCSAU).....** 470.25
- Audio to SDI (BLCOOCAUS).....** 470.25
- UpDownCross (BLOGCUDC).....** 470.25
- SDI Distribution Converter (BLOGCSDID).....** 470.25
- Sync Generator (BLCOOCSG).....** 470.25
- Optical Fiber Module (BLCOOCOF).....** 470.25
- openGear 21-Slot Frame (BLOG3FRCP).....** 1190.00

**matrox** CompressHD

Accelerator Card for H.264 HD File Creation

- Designed for professional content creators delivering H.264 files for Blu-ray, the web, and mobile devices.
  - Create H.264 files, for resolutions ranging from iPod to HD, faster than real time (bitrates up to 50 Mbps).
  - Works in systems with or without a video I/O device
  - Fits into Mac Pros, Intel-based Apple Xserve systems, and PCs
- #MACHD ..... **495.00**

**matrox** MXO2 Mini

HDMI and Analog I/O for Mac and PC

Use it with a laptop or desktop and applications including Final Cut Pro, Premiere Pro, Photoshop, and many more.

- Easily connects to cameras and monitors
- Capture HD video via HDMI or analog component; NTSC and PAL via analog component, S-Video, or composite
- Playback HD or SD video via HDMI and analog
- Realtime upscaling, downscaling, and cross conversion
- Stereo RCA and up to 8 channels of HDMI audio input and output
- 5.1 and 7.1 surround sound monitoring on the HDMI output
- Turn your HDMI screen into a professional-grade video monitor

**MXO2 Mini**

For Desktop Systems (MAMXO2MD) ..... **Call or Log-on**  
 For Laptops (MAMXO2ML) ..... **Call or Log-on**  
 With Thunderbolt (MAMXO2MINT) ..... **Call or Log-on**

**MXO2 Mini with Matrox MAX**

For Desktop Systems (MAMXO2MMD) ..... **Call or Log-on**  
 For Laptops (MAMXO2MML) ..... **Call or Log-on**  
 With Thunderbolt (MAMXO2MMT) ..... **Call or Log-on**

**matrox** DVI Plus

HD-SDI Scan Converter

Provides a progressive DVI-D input up to 1920 x 1200, and offers simultaneous A/D video output. Realtime upscaling and downscaling with proper color space and aspect ratio conversion. SD analog black burst (bi-level) or HD trilevel genlock is available with timing offset controls. Offers region-of-interest support with flexible scaling, positioning, and panning with realtime output update.

#MACDVIP ..... **995.00****matrox** MicroQuad

SDI to HDMI Multiviewer for 3G / HD / SD Feeds

Just 5 x 5", lets you connect four cameras via SDI and then stream all four to share one HDMI monitor at the same time. The monitor will display four quadrants, with each showing one of your camera signals. The signals can be in 3G, HD, or SD format, but must all be of the same. 4K is also supported, via 3G or HD-SDI, and gets downscaled to 1080p. At any moment, you can choose one of the four quadrants to take up the whole screen, and you can toggle between the four in taking up the whole screen. MicroQuad features all its controls on its body, and no computer is necessary. (MAMQ) ..... **995.00**



VS4 Quad HD Card for Wirecast (MAVS4Q) ..... **1475.00**

**matrox** MXO2 LE SDI/HDMI/analog HD/SD Video and Professional Audio I/O

Designed to provide all the features of an I/O card in a sturdy, portable breakout box. For use with both PC and Mac, it offers broadcast-quality audio and video I/O.

Calibration controls include Blue Only. You also benefit from a wide variety of HD and SD workflows with Final Cut Studio thanks to Matrox MXO2 LE's 10-bit hardware up/down/cross scaling engine and support for a wide variety of file-based formats and industry-standard codecs.



- HD/SD SDI, HD/SD analog component, Y/C, and composite inputs and outputs
- Up to five user selectable simultaneous video outputs: HD and/or SD on HDMI, SDI, and analog

- 10-bit HDMI input, output, and monitoring
- 10-bit real-time hardware up/down/cross conversion
- Genlock - SD analog black burst (bi-level) or HD tri-level sync
- 4-pin XLR power connector for AC or field battery operation

**MXO2 LE for Desktop (MAMXO2MND) ..... 995.00**

**MXO2 LE for Laptop (MAMXO2MNLZ) ..... 995.00**

**MXO2 LE with Thunderbolt (MAMXO2LENT) ..... 1095.00**

ExpressCard/34 Host Card for MXO2 (MAEXP34ADP) ..... **99.00**

3' MXO2 Host Adapter Cable (MAHOSTCBL1) ..... **49.00**

MXO2 Dock with Thunderbolt (MAMXO2DOCK) ..... **349.00**

**MXO2 LE with Matrox MAX for Desktop (MAMXO2MLE) ..... 1395.00**

**MXO2 LE with Matrox MAX for Laptop (MAMXO2MNL) ..... 1395.00**

**MXO2 LE w/Matrox MAX and Thunderbolt (MAMXO2LEMAXN) ..... 1495.00**

MXO2 PCIe Host Adapter (MAPAMXO2) ..... **99.00**

10' MXO2 Host Adapter Cable (MAHOSTCBL3M) ..... **89.00**

**matrox** Mojito MAX Professional I/O Card

Compatible with a long list of professional editing, effects, and encoding applications, the Mojito MAX performs H.264 encoding and hardware video scaling (up/down/cross), and offers monitoring calibration tools.

A 3/4-length PCIe card, it features HD/SD-SDI & HDMI I/O (along with embedded audio) and includes a breakout cable. Inputs and outputs for composite, component, and S-Video; stereo XLR input and stereo analog RCA output; and AES/EBU digital audio I/O. RS-422 input and genlock I/O that supports both blackburst and tri-level sync. Included software enables you to calibrate your HDMI monitor so that you can use it in a broadcast-level workflow.

#MAMJOITOMAX ..... **995.00**

**Mojito 4K: 4K Video Monitoring Card (MAMOJ4K) ..... 1995.00**

**matrox** Monarch HD Video Streaming and Recording Device

Designed for those who need to simultaneously stream a live event and record the master quality version for post-event editing. From any HDMI input source such as a camera or switcher, Monarch HD generates an H.264-encoded stream compliant with RTSP or RTMP protocols. While encoding the video at bitrates suitable for live streaming, Monarch HD simultaneously records a high-quality MP4 file to an SD card, USB drive, or a network-mapped drive. Is remotely controlled using a computer or mobile device with a web browser. (MAMONHD) ..... **995.00**

**matrox** MC-100 Dual SDI to HDMI Mini Converter

Can be used as a HD-SDI switcher, distribution amplifier, multiplexer, and a 3D processing unit to monitor, distribute, switch, multiplex, and process 3D content in real time. This portable device supports a wide range of display resolutions via 3G, Dual Link, HD, and SD-SDI. Use this device to convert SDI video signals with 16 channels of embedded audio into HDMI signal and monitor the sources on any HDMI display. Regardless of whether you're using RGB or YUV, the converter will ensure full 10-bit video spectrum for video signals up to a resolution of 1920 x 1080. It supports 8 channels of embedded audio on HDMI, and you can switch between the first and second set of 4 pairs. In addition, the converter supports multi-format SDI signal distribution. (MAMC100SH) ..... **459.00**

**Monarch HD and MC-100 Kit (MAMHDMC100B) ..... 1230.25**

**Tangen** Devices Wave Control Panel for Resolve Software

Wave brings a new level of affordability and quality to control surfaces.

Stylish enough to look good in any grading suite and compact enough to be used for on-set grading, has all the controls you'd expect from a color grading panel without compromising on the essential ergonomics. This compact unit features custom trackerballs that use non-contacting optical pickups and easy-to-read cool-blue OLED displays. Numerous control interfaces include control knobs, label buttons, function buttons, master dials, and transport controls. (TAWAVE) ..... **Log-on**

**Element**

With today's multi-purposing work stations, where desk space is at a premium, having a fully featured panel that is compact, fully featured and stylish enough to match its surroundings is a must. But, you'd expect that having a compact design means having to compromise ergonomics, features and control size. With the Element range, there is no compromise! Despite their small desk foot print, each Element offers full size controls which are ergonomically laid out, and best of all, there's lots of them!

Element Bt Panel: (TAEFTP) ..... **Log-on**

Element Mf Panel: (TAEFMP) ..... **Log-on**

Element Kb Panel: (TAEKBP) ..... **Log-on**

Element Tk Panel: (TAEKTP) ..... **Log-on**



800-947-1186 | 212-444-6686

**hp Z820 Series E2A27UT**  
PC Workstation

Built for high-end computing and visualization. This dual-processor workstation features 3.3 GHz Intel Xeon E5-2643 processor, 8GB RAM, and 1TB SATA hard disk. Along with a SuperMulti DVD±RW optical drive, it also features USB 3.0 and USB 2.0 ports for fast data transfer. It has an expandable design and offers enhanced tool-free access and power at whisper-quiet levels. With a sleek design, it also helps keep the components uncluttered, both inside and out. Windows 7 Professional 64-bit comes pre-installed, but it can be upgraded to Windows 8 Pro with included license.



#HEZ820E2A27U.....	<b>3331.03</b>	Z820 Series F1K22UT (HEZ620F1K22U).....	<b>2499.00</b>
Z420 Series D3J34UT (HEZ420D3J34U).....	<b>1575.00</b>	Z820 Series F1K23UT (HEZ620F1K23U).....	<b>3499.00</b>
Z420 Series D3J36UT (HEZ420D3J36U).....	<b>1499.00</b>	Z820 Series F1K26UT (HEZ620F1K26U).....	<b>2299.00</b>
Z420 Series D3J37UT (HEZ420D3J37U).....	<b>1096.99</b>	Z820 Series F1K28U T (HEZ620F1K28U).....	<b>1505.00</b>
Z420 Series D8D09UT (HEZ420D8D09U).....	<b>Call</b>	Z820 Series F1K29UT (HEZ620F1K29U).....	<b>2699.00</b>
Z420 Series D8D10UT (HEZ420D8D10U).....	<b>1297.13</b>	Z820 Series F1K30UT (HEZ620F1K30U).....	<b>3475.00</b>
Z420 Series E7R33US (HEZ420E7R33).....	<b>2499.00</b>	Z820 Series D3J62UT (HEZ820D3J62U).....	<b>Call</b>
Z420 Series F1J95UT (HEZ420F1J95U).....	<b>1275.00</b>	Z820 Series D3J66UT (HEZ820D3J66U).....	<b>3896.00</b>
Z420 Series F1J97UT (HEZ420F1J97U).....	<b>1499.00</b>	Z820 Series D8E42UA (HEZ820D8E42U).....	<b>5699.00</b>
Z420 Series F1J98UT (HEZ420F1J98U).....	<b>1579.00</b>	Z820 Series D8E43UA (HEZ820D8E43U).....	<b>9200.00</b>
Z420 Series F1J99UT (HEZ420F1J99U).....	<b>1799.00</b>	Z820 F1K12UT (HEZ820F1K12U).....	<b>3999.00</b>
Z420 Series F1K00UT (HEZ420F1K00U).....	<b>1750.00</b>	Z820 F1K14UT (HEZ820F1K14U).....	<b>3999.00</b>
Z420 Series F1K01UT (HEZ420F1K01U).....	<b>1919.95</b>	Z820 F1K15UT (HEZ820F1K15U).....	<b>9999.00</b>
Z420 Series F1K02UT (HEZ420F1K02U).....	<b>2286.87</b>	Z820 Series F1K32UT (HEZ820F1K32U).....	<b>3850.00</b>
Z420 Series F1K03UT (HEZ420F1K03U).....	<b>3521.23</b>		

**B Shortcut Keyboards**



Compatible with Mac or Windows computers, the Shortcut Keyboard features color-coded

keycaps with shortcut names and icons for easy identification. Connects via USB, has multimedia keys for volume control and mute, and can be used as a standard keyboard with all applications.

- For Adobe Premiere Pro (BEKBAPP)..... **89.95**
- For Avid Media Composer (BEKAMC)..... **89.95**

**Professional Series 3.0**

Jog/shuttle controller, specialty keys, two USB 2.0 ports, and program-specific, color and icon-coded keycaps. Task light with dual LEDs and a 12-inch flexible gooseneck plugs into any of three power ports.



- For Premiere Pro CC (BE5201C)..... **139.95**
- For Final Cut Pro X (BEPS3FCPX)..... **Log-on**
- For Avid Media Composer (BEKBP3AMC)..... **139.95**

**DV Keyboard 3.0**

- For Mac and Windows - USB (BEKBDV3)..... **89.95**
- For Sony Vegas (BEKBDV3SV)..... **139.95**
- For Edius Pro (BEKBDV3GVEK)..... **139.95**
- Keyboard Skin for Apple Final Cut Pro 7 (BEKSAFCP7)..... **14.95**
- Keyboard Skin for Premiere Pro CS5 Extended (BEKSAPPC5)..... **14.95**
- For Apple Final Cut Pro 7 (BEKSAFCP7)..... **14.95**

**Computer Video Editing Turnkey Systems**

All systems include in-house software and memory installation and testing by a certified computer technician and a full year of technical support.

**Call or Log-on for Models**



**PROMISE TECHNOLOGY, INC. Pegasus R4 and R6**

4- and 6- Bay Hot-swappable Direct Attached Storage with Thunderbolt

The Pegasus R4 and R6 are designed to unleash the raw power of Thunderbolt™ technology. With I/O rates of over 800 MB/s, they allow audio and post production engineers to unleash the raw power of Pegasus, enabled with Thunderbolt Technology. Final Cut users can ingest, edit, and playback, multiple streams of uncompressed 8-bit and 10-bit HD video, while protecting valuable workflows, audio sessions, and other creative media content. Graphic artists utilizing Photoshop and Maya 3D animation can manipulate and archive high resolution graphics with relative ease and lightning fast responsiveness.

- Featuring, two, high performance, 10Gb/s bi-directional channels, and PROMISE enterprise-level RAID 6 engine (features mature error handling schemes for the ultimate in data protection), provides fast, safe, and reliable external storage for protecting music, photos, videos, and other valuable data.



4TB Pegasus R4 (PRPR401US).....	<b>949.95</b>	12TB Pegasus2 R6 Thunderbolt 2 RAID (PRP2R6HD12US)....	<b>Log-on</b>
8TB Pegasus R4 (PRPR402US).....	<b>1349.00</b>	24TB Pegasus2 R8 Thunderbolt 2 RAID (PRP2R8HD24US) ...	<b>Log-on</b>
18TB Pegasus R4 (PRPR6HD18TUS).....	<b>2699.00</b>	32TB Pegasus2 R8 Thunderbolt 2 RAID (PRP2R8HD32US) .....	<b>Log-on</b>
8TB Pegasus2 R4 Thunderbolt 2 RAID (PRP2R4HD8US).....	<b>Log-on</b>		
18TB Pegasus2 R6 Thunderbolt 2 RAID (PRP2R6HD18US) ...	<b>Log-on</b>		
32TB Pegasus2 R8 Thunderbolt 2 RAID (PRP2R8HD32US) .....	<b>Log-on</b>		

**KB Covers Keyboard Covers**

- Ableton Live for MacBook (KBALMCC2)..... **29.83**
- Apple Final Cut Pro/Express (KBFCPBC)..... **23.49**
- Final Cut Pro X Keyboard Cover (KBFCPXMCC2)..... **23.24**
- Final Cut Pro X for MacBook Pro (KBFCPXPCC)..... **29.95**
- Avid Media Composer f/Apple Ultra-Thin (KBMCWCC) .. **39.95**
- Premiere Pro for MacBook (KBPRMCC2)..... **29.95**

**logickeyboard™**

**Application/Editing Keyboards**

- Grass Valley EDIUS Slim Line PC Keyboard (LOKBGVESLU)..... **94.95**
- Avid Media Composer Slim Line PC Keyboard (LOKBAWCC)..... **104.95**

**Keyboard Cover for Apple Ultra-Thin Aluminum Keyboard**

- Final Cut Pro (LOLSFCPM89)..... **32.95**
- Final Cut Pro X (LOFCPXM89)..... **28.95**
- Media Composer Cover (LOLSMCM89)..... **32.95**
- Final Cut Pro Keyboard Cover for MacBook (LOLSFCPM)..... **24.95**
- Transparent Final Cut Pro X LogicSkin (LOFCPXA89)..... **36.95**

**Keyboards (Apple Ultra-Thin Aluminum)**

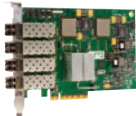
- Avid Media Composer (LOWUSBAMC)..... **114.95**
- Pro Line Digidesign Pro Tools (LOWKDDPT)..... **119.95**
- Advance Line Digidesign Pro Tools (LOWPKDDPT)..... **99.95**
- Final Cut Pro (LOWUSBFCP)..... **114.95**
- Final Cut Pro (Extended Keyset) (LOKBUCFP)..... **99.95**
- Advance Line Final Cut Pro X (LOFCPXALKB)..... **99.00**
- Professional Line Final Cut Pro X (LOFCPXPALKB)..... **119.00**

**Adobe Premiere Pro CS6**

- Keyboard Cover for Ultra Thin Keyboard (LOLSPPROGMB9)..... **39.90**
- English MacBook Keyboard Cover (LOLSPPROGMBU)..... **29.90**
- PC Slim Line Keyboard (LOPPROGAJPU)..... **116.99**
- English Advance Line Keyboard (LOPPROGAMB9)..... **119.95**
- English Pro Line Keyboard (LOPPROGM89)..... **144.95**

**ATTO Celerity Fibre-Channel**  
PCI Express Host Adapters

Available in PCI Express, the Celerity host adapter supports 8GB Fibre-Channel devices. Choose from quad, dual, or single-channel models. Full- duplex connections support up to 800 or 1600MB/sec per channel.



- 8GB Single-Channel (ATCTFC81EN00)..... **Log-on**
- 8GB Dual Channel (ATCTFC82EN00)..... **Log-on**
- 6 Gbps SAS/SATA PCIe 2.0 Host Adapter (ATESASH680)..... **Log-on**
- ThunderLink SH 1068 10 Gbps Thunderbolt to 6 Gbps SAS/SATA Desklink (ATLSH1068D)..... **832.00**



**Shuttle-Xpress Shuttle-Pro 2**

NLE Multimedia Controllers

- 5 or 15 programmable buttons for frequently used commands
- Jog/shuttle control knob for frame by frame control



- Shuttle-Xpress in Black (COSXB) or Silver (COSX)..... **37.99**
- Shuttle-Pro 2 in Black (COSPRO2) or Silver (COSPRO2S)..... **79.95**