

POWER TO YOUR NEXT STEP

We all have a
next step.
Capture the
moment at
seven frames
per second.



EOS 70D



you can

Canon

Capture the moment at seven frames per second



20.2 MEGA
PIXELS
CMOS

20.2 megapixel sensor and DIGIC 5+ processing

The EOS 70D's APS-C sized 20.2-megapixel CMOS sensor strikes a balance between high resolution and low noise. Create images that are full of rich detail, subtle tones and natural colour. A 14-bit DIGIC 5+ image processor ensures smooth gradation of colour and fast, responsive performance.

Dual Pixel AF
CMOS

Sophisticated autofocus for photos and movies

Dual Pixel CMOS AF delivers swift, continuous focusing in Live View mode, and smooth, high performance focus tracking when shooting Full-HD movies. When composing using the camera's viewfinder, 19 cross-type AF points spread across the frame allow fast-moving subjects to be followed precisely.

Wi-Fi
CERTIFIED

Wi-Fi connectivity with advanced handling and design

Wi-Fi connectivity enables remote control of the EOS 70D from your smartphone, tablet or home computer, as well as providing convenient image sharing. An intuitive touch screen provides fast access to camera settings and makes reviewing images quick and easy.



Tv (Shutter Speed): 1/2500 sec

Av (Aperture Value): f/5.0

ISO Speed: 400

Lens: EF 70-200mm f/2.8L IS II USM
Extender EF 1.4x III

Focal length: 235.0 mm

For image quality you'll love

Capture the beauty of the world around you. Photos from the EOS 70D are packed with detail, rich colour and subtle tones.

20.2 MEGA
PIXELS
CMOS

20.2 megapixel resolution

A high-resolution 20.2 megapixel sensor captures the world with extraordinary clarity and depth. Files can be printed at large sizes – perfect for framing and use in portfolios. Such high-resolution images can also be cropped easily while maintaining quality – great for isolating distant subjects and adjusting your final composition.

DIGIC
5+

DIGIC 5+ processing

At the heart of the EOS 70D is a DIGIC 5+ processor, which works with the camera's CMOS sensor to provide responsive camera performance and create image files that are low in noise and rich in detail. Using 14-bit processing the DIGIC 5+ reproduces subtle tonal gradations and natural skin tones.



Tv (Shutter Speed): 1/200 sec
Av (Aperture Value): f/9.0
ISO Speed: 250
Lens: EF-S 10-22mm f/3.5-4.5 USM
Focal length: 15.0mm

High performance shooting

All Cross-type point
19 AF **Dual Pixel CMOS AF**

Advanced autofocus with 19 cross-type AF points and Dual Pixel CMOS AF

Track fast-moving subjects accurately and customise the EOS 70D's focusing system to match your subject. Shoot with 19 autofocus points spread out over the frame in a wide-area pattern. Each point is a cross-type sensor, even when used with lenses having an f/5.6 maximum aperture.

Cross-type focus points are sensitive to both horizontal and vertical lines. They offer faster, more accurate initial focus acquisition as well as improved tracking of moving objects, whatever you are shooting and whichever orientation you hold the camera in. The centre focus point is a diagonal cross-type when used with lenses having a maximum aperture of f/2.8 or wider, making it even more sensitive.

The EOS 70D's 19 autofocus points can be used individually, together in small groups or as an active area, where the closest object to the camera is used to obtain accurate focus. A dedicated AF area selection button, positioned conveniently next to the shutter release, allows fast switching between these modes, with the camera still at your eye.

This is useful, for example, if a static subject suddenly starts to move. Simply switch from single-point AF to a 19-point wide area pattern that tracks the subject as it moves about the frame.

Different focus-point selections and focus modes can be made for upright and horizontal camera orientations - useful when swapping between shooting positions while photographing the same subject.

When shooting using the Vari-angle screen, rather than the camera's viewfinder, Canon's powerful Dual Pixel CMOS AF technology establishes focus quickly and accurately - providing a reliable and swift autofocus system when working in Live View mode.

Up to
7.0
Frames
Per Sec

Fast 7 fps continuous shooting

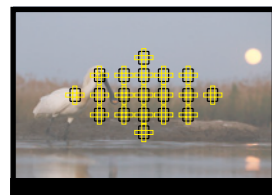
Keep up with the action, shooting seven 20.2 megapixel images every second and capturing up to 65 JPEG files or 16 RAW files in a single burst.* The EOS 70D's Continuous Shooting mode is perfect for following fast-moving subjects in sports and wildlife

photography, as well as capturing that decisive moment in street photography and portraiture. For those occasions where you don't wish to disturb your subject, a Silent Shooting mode is available, which minimises shutter noise.

Tv (Shutter Speed): 1/1000 sec
Av (Aperture Value): f/6.3
ISO Speed: 125
Lens: EF 200-400mm f/4L IS USM Extender 1.4x
Focal length: 386.0mm

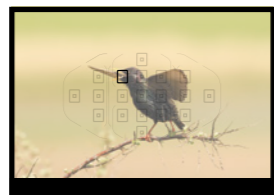


Cross-type focus points

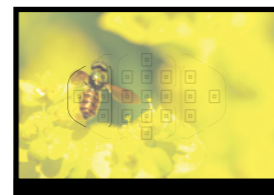


All 19 AF points are sensitive cross type points and are spread across the frame

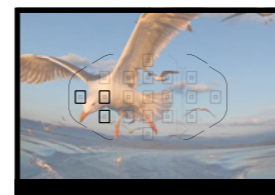
AF selection methods



Manual selection: single point
Any of the 19 points can be selected individually



Manual selection: zone AF
Restricts automatic selection of AF points to a user selected zone



Auto selection
Closest object to the camera is used to obtain accurate focus

Intelligent
Viewfinder

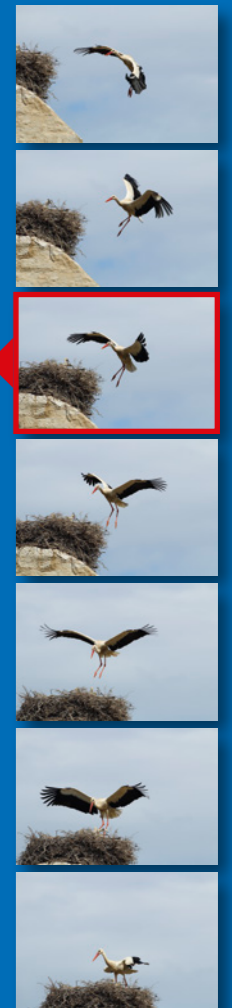
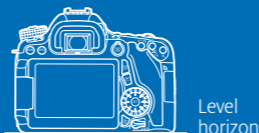
Intelligent Viewfinder

A transmissive LCD superimposes information on the EOS 70D's large, bright viewfinder, including the currently active focus points, an optional gridline overlay and an electronic level, which helps keep horizons straight. 98 per cent viewfinder coverage, 0.95x magnification and a 22mm eye point gives a relaxed and comfortable viewing experience.

To help keep track of the camera's settings, an electronic display underneath the main viewing area shows shutter speed, aperture and ISO as well as other information like exposure compensation and battery status.



Electronic level



*UHS-I card required

EOS Movies



Take complete control of your video projects, and be as creative with movies as you are with photos. Dual Pixel CMOS AF technology delivers smooth, high-performance autofocus tracking when shooting video, and stereo sound gives your movies the soundtrack they deserve.

Cinematic movies from your DSLR

Shoot superb quality Full-HD video with complete manual control over exposure, white balance and sound. Record at up to 60 fps at 720p resolution for detailed slow-motion effects and choose from a variety of file compression options.

Digital sound can be recorded using the EOS 70D's built-in stereo microphone or by connecting an external microphone via a standard 3.5mm jack. Set the recording level manually or automatically from commands in the camera's menu.

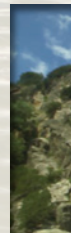
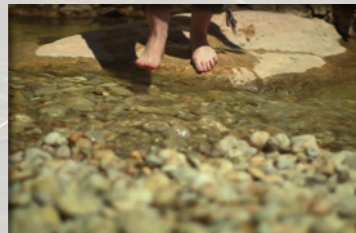
STM lens technology

The EOS 70D offers full compatibility with Canon STM lenses for smooth, quiet, autofocus when shooting Full-HD video. Ideal for DSLR videographers, STM lenses use stepper-motor technology for fluid focus transitions without distracting focusing noise spoiling your movie's soundtrack.

Tv (Shutter Speed): 1/80 sec
Av (Aperture Value): f/13.0
ISO Speed: 200
Lens: EF-S 18-135mm f/3.5-5.6 IS STM
Focal length: 18.0 mm



View the EOS 70D sample video at the following link:
canon-europe.com/EOS_70D





Vari angle LCD

Vari angle touch screen

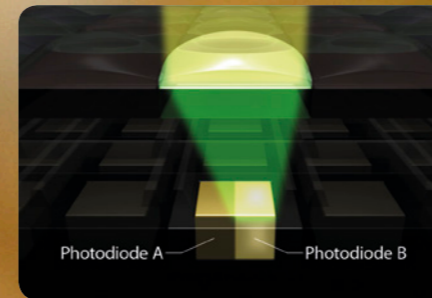
A 7.7cm (3.0") ClearView II capacitive touch screen, offers quick and easy access to the EOS 70D's menu system and quick-control screen. Browse images by swiping left and right, and shoot intuitively in Live View mode by focusing and capturing with a single tap.

The screen pivots away from the camera's body and rotates through 270°, offering new shooting angles and a different view of the world - whether you are shooting still photos or video clips. Shoot comfortably at waist level, get low down for a sense of drama, or hold your EOS 70D above your head to shoot over the top of crowds.



Dual Pixel CMOS AF

Dual Pixel CMOS AF



Dual Pixel CMOS AF - two individual photodiodes

The EOS 70D is the first Canon DSLR to feature Dual Pixel CMOS AF, which delivers smooth, high-performance focus tracking in movies and fast autofocus acquisition when shooting still photos in Live View mode.

All effective pixels on the surface of the EOS 70D's sensor consist of two individual photodiodes, which are read separately for phase-detection autofocus and together for imaging.* Since every pixel is constructed in this way, Dual Pixel CMOS AF is possible over 80 per cent of the frame and is highly accurate without compromising on image quality.

With face and object tracking engaged, Movie Servo AF follows a chosen subject as it moves, or when you recompose a shot. Alternatively, just select different focus areas by simply tapping the touch screen even when recording.

Dual Pixel CMOS AF is designed to track focus smoothly without searching either side of the correct focus position. This is ideal for creating professional-looking pull-focus effects and keeping your subject in focus while maintaining a blurred background - a defining characteristic of EOS Movies.

Tv (Shutter Speed): 1/2500 sec
Av (Aperture Value): f/7.1
ISO Speed: 500
Lens: EF 70-300mm f/4-5.6L IS USM
Focal length: 221.0mm

* With compatible lenses. See specifications for details.

Maximum creativity, whatever the conditions

Even under the most challenging conditions, the EOS 70D empowers you to work creatively. Capture scenes exactly as they appear, or take control for a totally different look and feel.

Tv (Shutter Speed): 1/3200 sec
Av (Aperture Value): f/7.1
ISO Speed: 1250
Lens: EF 70-300mm f/4-5.6L IS USM
Focal length: 70.0mm

ISO

■ 12800
■ 6400

Low-light photography

When light levels drop, the EOS 70D lets you keep shooting hand held and without flash, using high ISO sensitivity to capture the atmosphere of an occasion with ambient light.

Enjoy ISO settings up to ISO 12800 (extendable to ISO 25600), and a versatile Auto ISO function that varies the sensitivity of the camera between upper and lower limits, which you can control via the camera's menu. To keep your images free from camera shake, you can also specify the lowest shutter speed that the EOS 70D will use before increasing ISO to achieve the correct exposure.

The EOS 70D's CMOS sensor uses new materials to enhance its sensitivity to light, while its DIGIC 5+ image processor applies advanced noise reduction algorithms to maintain image quality at high ISO settings.

Handheld Night Scene

Handheld Night Scene is a dedicated mode that allows you to shoot high quality images in dark conditions. A series of images is captured at a shutter speeds fast enough to prevent camera shake. The EOS 70D then blends them together to create a sharp, well-exposed composite image.

Precise exposure control

Be accurate with your exposures and get the photographic look and feel you are aiming for. Choose from four metering patterns - Evaluative, Partial, Spot and Centre Weighted - and take advantage of ± 5 stops of exposure compensation, adjustable in 1/2 or 1/3 EV increments.

Auto Exposure Bracketing (AEB) is available for those situations where the correct exposure is hard to determine, or for capturing the component frames of an HDR composite image that will be merged on computer later. Bracket up to 2, 3, 5 or 7 shots in 3 EV intervals.

Multiple exposure photography

Create exciting composite images that describe the patterns of movement, or combine similar shapes and colours for an abstract approach to photography. Simply input the number of frames you wish to superimpose and start shooting. The individual images will be combined as they are shot.

In Live View mode it's possible to preview the composite image at any stage during shooting. Exposure can be averaged automatically as images are captured or added together, with each shot being adjusted manually and the result saved as a new JPEG file.

High Dynamic Range (HDR)

In high-contrast scenarios, built-in HDR processing allows detail to be preserved in the brightest and darkest parts of a photo. Three images are captured at different exposures which the EOS 70D combines into a single image file that maintains detail throughout scene.

The degree of dynamic range expansion can be set manually up to ± 3 EV, or set automatically by the camera.



Resulting combined HDR image



Over exposed image

Under exposed image

Adding a personal touch

Experiment with Creative Filter effects, either emphasising the atmosphere of an occasion or changing the mood completely.



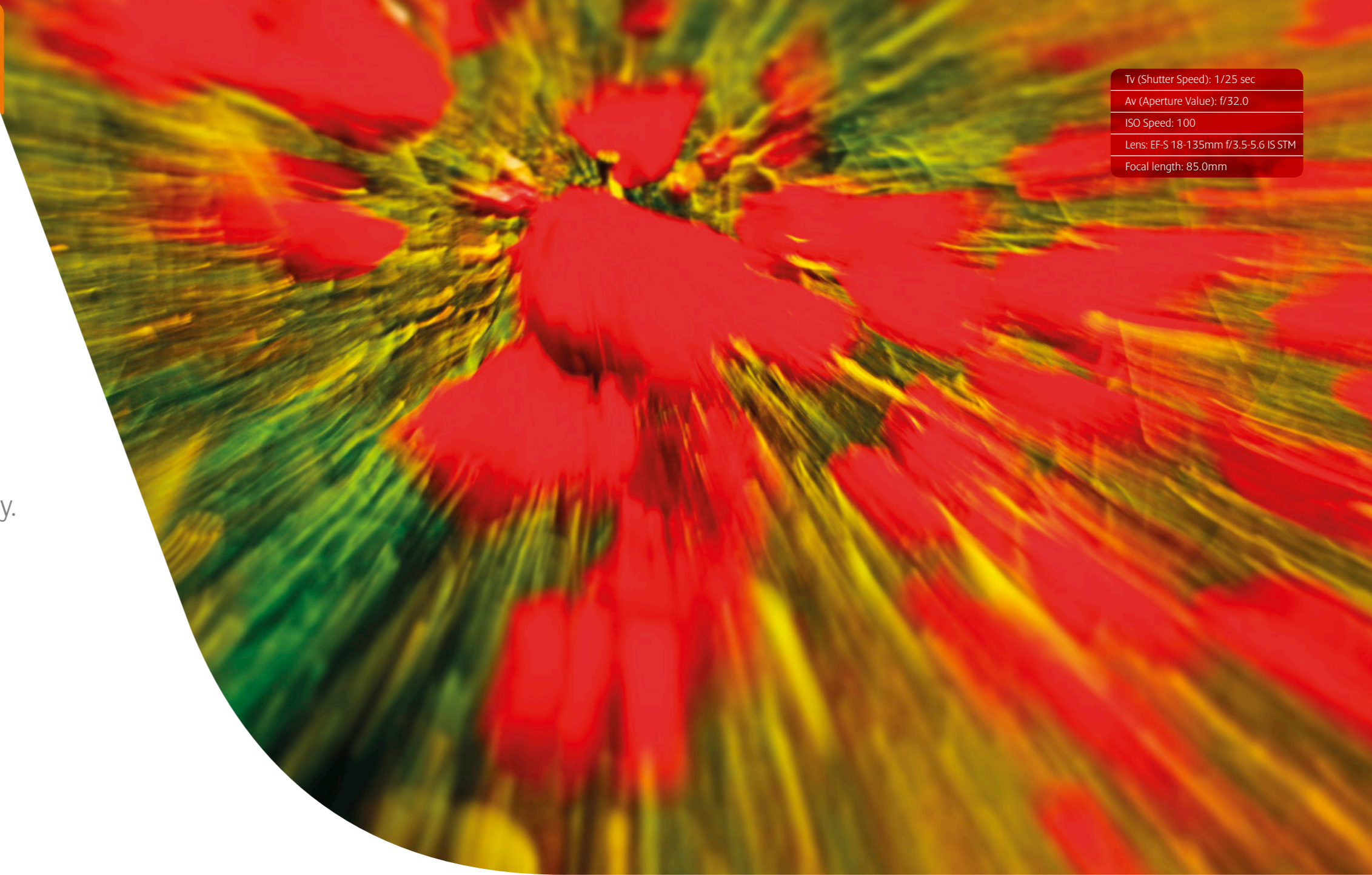
Creative Filters

Creative Filters

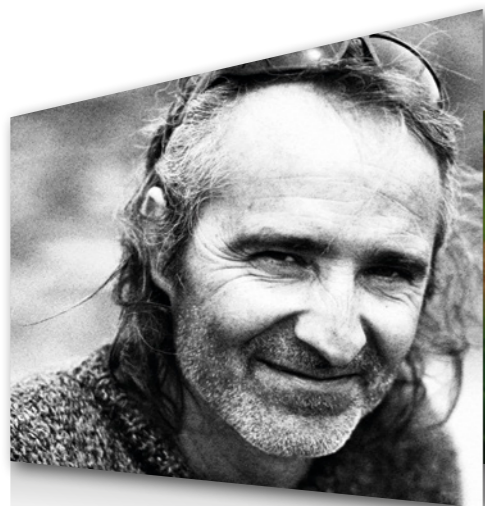
Make your own mark, using the EOS 70D's Creative Filters to give your photography a distinctive look and feel. Choose from different effects, and fine tune each one in camera.

More than one Creative Filter can be applied to a single image, giving you dozens of combinations to experiment with. Preview the effects while shooting in Live View mode, or apply them afterwards while reviewing images.

Tv (Shutter Speed): 1/25 sec
Av (Aperture Value): f/32.0
ISO Speed: 100
Lens: EF-S 18-135mm f/3.5-5.6 IS STM
Focal length: 85.0mm



Creative Filter:
Water painting effect



Creative Filter:
Grainy B&W effect



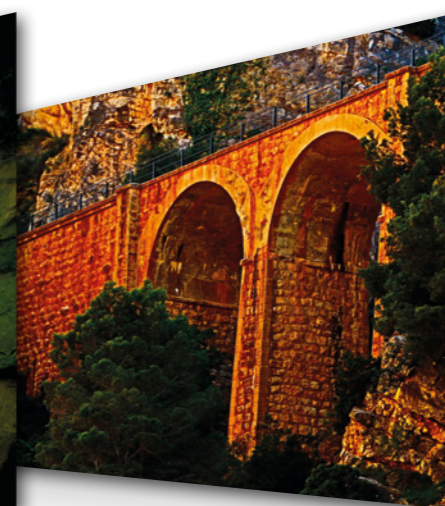
Creative Filter:
Soft focus effect



Creative Filter:
Fish-eye effect



Creative Filter:
Toy camera effect



Creative Filter:
Art bold effect



Creative Filter:
Miniature effect

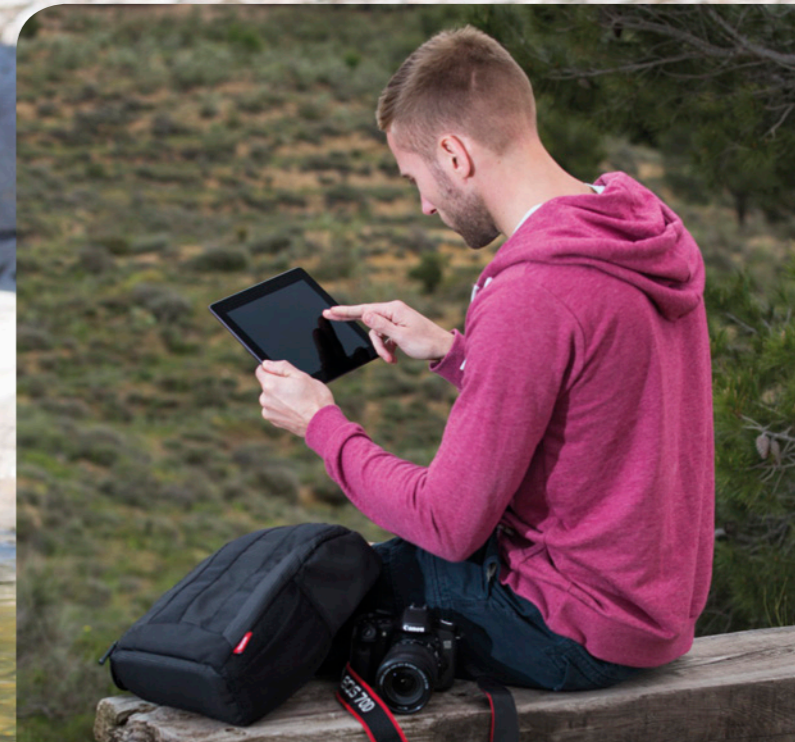
Wi-Fi connectivity



Wi-Fi connectivity

Integrated Wi-Fi allows remote operation of the EOS 70D using a smartphone, tablet, PC or Mac. Explore new vantage points to get a different view of the world, or shoot from a short distance away – perfect for photographing wildlife and other sensitive subjects.

Enjoy on-screen Live View composition straight from the EOS 70D, remote control over camera settings and wireless reviewing and rating of images. Simply connect to the camera using the EOS Remote app (free download for iOS and Android operating systems), or from a PC or Mac running EOS Utility software.



Sharing and transferring image files

Share files wirelessly with other compatible Canon cameras, and upload photos and movies to social networking sites via Canon Image Gateway. The EOS 70D can join your home wireless network or form ad-hoc wireless connections with compatible devices, including other Canon cameras, DLNA devices and PictBridge via Wireless LAN enabled printers.

The EOS System

EOS System Accessories



Battery Grip
BG-E14



GPS Module
GP-E2



Remote Switches
RS-60E3, RC-6



Angle Finder C



Leather Case
EH-21L



Hand Strap
E2

EF Lenses



Wildlife / Long Lens Shooting

EF 70-200mm f/4L IS USM
EF 70-300mm f/4-5.6L IS USM

Zoom in on details or pull distant subjects closer and let the Image Stabilizer reduce the risk of camera shake.



Macro

EF-S 60mm f/2.8 Macro USM

Focus within 20cm and fill your frame with stunning detail.



Landscape and Travel

EF-S 10-22mm f/3.5-4.5 USM
EF-S 18-135mm f/3.5-5.6 IS STM

This ultra wide-angle lens is ideal to show the power of a dramatic landscape, or the detail of exquisite architecture interiors.



Portrait

EF 40mm f/2.8 STM
EF 50mm f/1.4 USM
EF 85mm f/1.8 USM

Three classic lenses capable of great natural portraits in low light thanks to fast maximum apertures.



Flash setup

Resulting image

Advanced flash photography, made easy



Integrated Speedlite TRANSMITTER



Speedlite 320 EX

Speedlite 430 EX II

Speedlite Flashes

Canon Speedlite flashes let you take complete control over lighting. Shoot confidently in low-light conditions, use fill-in flash to reduce shadows in bright sunlight, and mix flash with ambient light for photography that looks natural and atmospheric. Or why not try taking your Speedlite flash off camera, lighting your subject from a different angle for a dramatic result.

Whatever your approach, E-TTL II flash exposure metering makes accurate exposures simple. A series of pre-flashes before the main exposure determines the correct level of flash power for the scene.

Off-camera flash

Position compatible Speedlite flashes away from your EOS 70D and trigger them wirelessly with the camera's Integrated Speedlite Transmitter. Off-camera flashes can be controlled individually or in groups of two or three. The flash output of each one can be adjusted individually, making accurate control of lighting ratios quick and simple.

Off-camera flash is particularly useful for shooting portraiture, when the dramatic shadows created by side lighting can add drama and depth to a photograph.

Software and workflow

Canon provides photographers with a solution for every step of their digital workflow, from capture through processing to output.

Digital Photo Professional and EOS Solution software

Like all EOS cameras, the EOS 70D is accompanied by a suite of software that further enhances its functionality. Digital Photo Professional (DPP) allows photographers to browse, edit and process JPEG and RAW files using an intuitive, fully featured interface.

Colour, white balance, brightness, contrast and sharpness can all be adjusted, along with a host of other editing functions, such as cropping and resizing. Also included is EOS Utility, which provides remote camera control and tethered shooting capabilities. The Picture Style Editor application allows photographers to customise the EOS 70D's built-in Picture Styles.

Photographic printing

Canon PIXMA inkjet printers allow photographers to make stunning prints from the convenience of their own home - perfect for portfolio printing and fine-art projects.

Canon SELPHY dye-sublimation printers offer swift, affordable printing of photographs at smaller sizes. Their compact size makes them ideal for use around the home. Some SELPHY models also feature Wi-Fi for wireless printing.



All brochure photography taken by Canon Ambassador Brutus Östling with the help of Lee Gladman

Specifications: EOS 70D

IMAGE SENSOR	Type Effective Pixels Total Pixels Aspect Ratio Low-Pass Filter Sensor Cleaning Colour Filter Type	22.5mm x 15.0mm CMOS Approx. 20.20 megapixels Approx. 20.90 megapixels 3:2 Built-in/Fixed with fluorine coating EOS integrated cleaning system Colour Filter Type
IMAGE PROCESSOR	Type	DIGIC 5+
LENS	Lens Mount Focal Length	EF/EF-S Equivalent to 1.6x the focal length of the lens
FOCUSING	Type AF System/Points AF Working Range AF Modes AF Point Selection Selected AF Point Display Predictive AF ⁽¹⁾ AF Lock AF Assist Beam Manual Focus AF Microadjustment	TTL-CT-SR with a CMOS sensor 19 cross-type AF points (extra sensitivity at f/2.8 at centre) ⁽²⁾ EV-0.5 - 18 (at 23°C & ISO100) AI Focus, One Shot, AI Servo Automatic selection: 19 point AF Manual selection: Single point AF Manual selection: Zone AF AF points can be selected separately for vertical and horizontal shooting Indicated by a transmissive LCD in viewfinder and on top LCD panel and Quick Control screen 50 kmph up to about 8 meters (26.2 feet) Locked when shutter button is pressed half way in One Shot AF mode or AF-ON button is pressed Intermittent firing of built-in flash or emitted by optional dedicated Speedlite Selected on lens C.Fn II-13 +/- 20 steps (wide and tele setting for Zooms) Adjust all lenses by same amount Adjust up to 40 lenses individually Adjustments remembered for lens by serial number
EXPOSURE CONTROL	Metering Modes Metering Range AE Lock Exposure Compensation AEB ISO Sensitivity ⁽³⁾	TTL full aperture metering with 63 zone Dual Layer SPC (1) Evaluative metering (linked to all AF points) (2) Partial metering (approx. 7.7% of viewfinder at centre) (3) Spot metering (approx. 3.0% viewfinder at centre) (4) Centre weighted average metering EV 1-20 (at 23°C with 50mm f/1.4 lens ISO100) Auto: In One-shot AF mode with evaluative metering exposure is locked when focus is achieved Manual: By AE lock button in creative zone modes +/- 5 EV in 1/3 or 1/2 stop increments (can be combined with AEB) 2, 3, 5 or 7 Shots +/- 3 EV 1/3 or 1/2 stop increments Auto (100-12800): 100-12800 (in 1/3-stop or whole stop increments) ISO can be expanded to H: 25600 During Movie shooting: Auto (100-6400), 100-6400 (in 1/3-stop or whole stop increments) ISO can be expanded to H: 12800
SHUTTER	Type Speed	Electronically-controlled focal-plane shutter 30-1/8000 sec (1/2 or 1/3 stop increments), Bulb (Total shutter speed range Available range varies by shooting mode)
WHITE BALANCE	Type Settings Custom White Balance WB Bracketing	Auto white balance with the imaging sensor AWB, Daylight, Shade, Cloudy, Tungsten, White/Fluorescent light, Flash, Custom, Colour Temperature Setting White balance compensation: 1. Blue/Amber +/-9 2. Magenta/ Green +/-9 Yes, 1 setting can be registered +/-3 levels in single level increments 3 bracketed images per shutter release Selectable Blue/Amber bias or Magenta/ Green bias
VIEWFINDER	Type Coverage (vertical/horizontal) Magnification Eyepoint Dioptre Correction Focusing Screen Mirror Viewfinder Information Depth of field preview	Pentaprism Approx. 98% Approx. 0.95x ⁽⁴⁾ Approx. 22mm (from eyepiece lens centre) -3 to +1 m ⁻¹ (dioptre) Fixed (Transmissive LCD screen) Quick-return half mirror (Transmission: reflection ratio of 40:60, no mirror cut-off with EF 600mm f/4 IS USM or shorter) AF information: AF points, focus confirmation, AF area selection mode Exposure information: Shutter speed, aperture value, ISO speed (always displayed), AE lock, exposure level/compensation, spot metering circle, exposure warning, AEB Flash information: Flash ready, high-speed sync, FE lock, flash exposure compensation, red-eye reduction light Image information: Card information, maximum burst (2 digit display), Highlight tone priority (D+) Composition information: Grid, Electronic level (2 methods) Other information: Battery check, Alert symbol Yes, with Depth of Field preview button

LCD MONITOR	Type Coverage Viewing Angle (horizontally/vertically) Coating Brightness Adjustment Display Options	Vari angle 7.7cm (3.0") 3:2 Clear View II TFT, approx. 1040K dots Approx. 100% Approx. 170° Anti-reflection, Solid Structure and Anti smudge Adjustable to one of seven levels (1) Quick Control Screen (2) Camera settings (3) Electronic Level
FLASH	Built-in Flash GN (ISO 100) Built-in Flash Coverage Built-in Flash Recycle Time Modes Red-Eye Reduction Flash Exposure Compensation Flash Exposure Bracketing Flash Exposure Lock Second Curtain Synchronisation HotShoe/PC terminal External Flash Compatibility External Flash Control	12 Up to 17mm focal length (35mm equivalent: 28mm) Approx. 3 seconds Auto, Manual flash, Integrated Speedlite Transmitter Yes - with red-eye reduction lamp 1/250sec +/- 3EV in 1/2 or 1/3 increments Yes, with compatible External Flash Yes Yes/No E-TTL II with EX series Speedlites, wireless multi-flash support Via camera menu screen
SHOOTING	Modes Picture Styles Colour Space Image Processing Drive Modes Continuous Shooting	Scene Intelligent Auto (Stills and Movie), No Flash, Creative Auto, SCN (Portrait, Landscape, Close-up, Sports, Night Portrait, Handheld Night Scene, HDR Backlight Control), Program AE, Shutter priority AE, Aperture priority AE, Manual (Stills and Movie), Bulb, Custom Auto, Standard, Portrait, Landscape, Neutral, Faithful, Monochrome, User Defined (x3) sRGB and Adobe RGB Highlight Tone Priority Auto Lighting Optimizer (4 settings) Long exposure noise reduction High ISO speed noise reduction (4 settings) Multi Shot Noise Reduction Auto Correction of Lens Peripheral Illumination and Chromatic aberration correction Basic+ (Shoot by ambient selection, Shoot by lighting or scene type) Creative filters (Art Bold, Water painting, Grainy B/W, Soft focus, Toy camera, Miniature effect, Fish-eye) RAW image processing - during image Playback only Resize to M or S1, S2, S3 Single, Continuous L, Continuous H, Self timer (2+ remote, 10s +remote), Silent Single Shooting, Silent Continuous Shooting Max. Approx. 7fps. (speed maintained for up to 65 images (JPEG) ⁽¹⁾⁽²⁾ (with UHS-I card), 16 images (RAW)) ⁽²⁾⁽³⁾
LIVE VIEW MODE	Type Coverage Frame Rate Focusing Metering Display Options FILE TYPE Still Image Type RAW+JPEG Simultaneous Recording Image Size	Electronic viewfinder with image sensor Approx. 100% (horizontally and vertically) 30 fps Manual Focus (Magnify the image 5x or 10x at any point on screen) Autofocus: Dual Pixel CMOS AF (Face detection and Tracking AF, FlexiZone-Multi, FlexiZone-Single), Phase detection AF (Quick mode) Realtime evaluative metering with image sensor Evaluative metering, partial metering, spot metering, center-weighted average metering Grid overlay (x3), Histogram, Multi aspect ratios JPEG: Fine, Normal (Exif 2.21 [Exif Print] compliant) / Design rule for Camera File system (2.0), RAW: RAW, M-Raw, S-Raw (14bit, Canon original RAW 2nd edition), Digital Print Order Format [DPOF] Version 1.1 compliant Yes, any combination of RAW + JPEG, M-Raw + JPEG, S-Raw + JPEG possible. JPEG 3:2: (L) 5472x3648, (M) 3468x2432, (S1) 2736x1824, (S2) 1920x1280, (S3) 720x480 JPEG 4:3: (L) 4864x3648, (M) 3248x2432, (S1) 2432x1824, (S2) 1696x1280, (S3) 640x480 JPEG 16:9: (L) 5472x3072, (M) 3468x2048, (S1) 2736x1536, (S2) 1920x1080, (S3) 720x408 JPEG 1:1: (L) 3648x3648, (M) 2432x2432, (S1) 1824x1824, (S2) 1280x1280, (S3) 480x480 RAW: (RAW) 5472x3648, (M-Raw) 4104x2736, (S-Raw) 2736x1824 MOV (Video): H.264 Intra frame / inter frame, Sound: Linear PCM, recording level can be manually adjusted by user 1920 x 1080 (29.97, 25, 23.976 fps) intra or inter frame 1280 x 720 (59.94, 50 fps) intra or inter frame 640 x 480 (29.97, 25 fps) inter frame Max duration 29min 59sec, Max file size 4GB (If file size exceeds 4GB a new file will be created automatically) New folders can be manually created and selected (1) Consecutive numbering (2) Auto reset (3) Manual reset
OTHER FEATURES	Custom Functions Metadata Tag LCD Panel / Illumination Water/ Dust Resistance	23 Custom Functions User copyright information (can be set in camera) image rating (0-5 stars) Yes / Yes Yes (equal to EOS-1N)

OTHER FEATURES	Sound Memo Intelligent Orientation Sensor Playback zoom Display Formats Slide Show Histogram Highlight Alert Image Erase/Protection Menu Categories Menu Languages Firmware Update INTERFACE Computer Other DIRECT PRINT Canon Printers PictBridge STORAGE Type SUPPORTED OPERATING SYSTEM PC & Macintosh SOFTWARE Browsing & Printing Image Processing Other POWER SOURCE Batteries Battery life Battery Indicator Power saving Power Supply & Battery Chargers PHYSICAL SPECIFICATIONS Body Materials Operating Environment Dimensions (WxHxD) Weight (body only) ACCESSORIES Viewfinder Wireless File Transmitter Lenses Flash Battery Grip Remote Controller/ Switch Other	No Yes 1.5x - 10x (1) Single image with information (2 levels) (2) Single image (3) 4 image index (4) 9 image index (5) Jump Display Image selection: All images, by Date, Folder, Movies, Skills Playback time: 1/2/3/5/10/20 seconds Repeat: On/Off Background music: On/Off Transition effect: Off, Slide in 1, Slide in 2, Fade 1, Fade 2, Fade 3 Brightness: Yes. RGB: Yes Erase: Single image, All images in folder, Checkmarked images, unprotected images Protection: Erase protection of one image at a time (1) Shooting menu (x6) (2) Playback menu (x3) (3) Setup menu (x4) (4) Custom Functions menu (5) My Menu 25 Languages English, German, French, Dutch, Danish, Portuguese, Finnish, Italian, Norwegian, Swedish, Spanish, Greek, Russian, Polish, Czech, Hungarian, Romanian, Ukrainian, Turkish, Arabic, Thai, Simplified Chinese, Traditional Chinese, Korean and Japanese Update possible by the user. Hi-Speed USB Video output (PAL/ NTSC) (integrated with USB terminal), HDMI mini output (HDMI-CEC compatible), External microphone (3.5mm Stereo mini jack) Canon Compact Photo Printers and PIXMA Printers supporting PictBridge SD, SDHC or SDXC (UHS-I) card Windows 8 / 7 / SP1 / Vista SP2 / XP SP3 OS X v10.6, v10.7, v10.8 ImageBrowser EX Digital Photo Professional PhotoStitch, EOS Utility, Picture Style Editor Rechargeable Li-Ion Battery LP-E6 (supplied), built in for date & settings Approx. 920 (at 23°C, AE 50%, FE 50%) ⁽⁴⁾ Approx. 850 (at 0°C, AE 50%, FE 50%) 6 levels + percentage Power turns off after 1, 2, 4, 8, 15 or 30mins. AC Adapter Kit ACK-E6, Battery charger LC-E6, Car Battery charger CBC-E6 Aluminium and polycarbonate resin with glass and conductive fibre 0 - 40 °C, 85% or less humidity 139.0 x 104.3 x 78.5mm Approx. 755g (CIPA testing standard, including battery and memory card) Eyecup Eb, E-series Diopter Adjustment Lens, Eyepiece Extender EP-EX15II, Angle Finder C Leather case EH21-L Built in All EF and EF-S lenses Canon Speedlites (90EX, 220EX, 270EX, 270EX II, 320EX, 420EX, 430EX, 430EX II, 550EX, 580EX, 580EX II, 600EX, 600EX-RT, Macro-Ring-Lite, MR-14EX, Macro Twin Lite MT-24EX, Speedlite Transmitter ST-E2, Speedlite Transmitter ST-E3-RT) BG-E14 Remote Switch RS-60E3, Remote Controller RC-6 Hand Strap E2, GP-E2
All data is based on Canon standard testing methods except where indicated. Subject to change without notice.		
<ol style="list-style-type: none"> Large/Fine (Quality 8) resolution Based on Canon's testing conditions, JPEG, ISO 100, Standard Picture Style. Varies depending on the subject, memory card brand and capacity, image recording quality, ISO speed, drive mode, Picture Style, Custom functions etc. With 50mm lens at infinity, -1m-1 dpt Based on the CIPA Standard and using the batteries and memory card format supplied with the camera, except where indicated With EF 300mm f/2.8L IS USM at 50 kph Recommended Exposure Index Maximum fps and buffer capacity may be reduced depending on the camera settings and light level Peripheral cross-type AF points will not function as cross-type AF points with the following lenses: EF 35-80mm f4.5-5.6 (II/III/USM), EF 35-105mm f4.5-5.6 (USM), EF 80-200mm f4.5-5.6 (II) 		

Canon Inc.
canon.com

Canon Europe
canon-europe.com

English Edition 0173W886
© Canon Europa N.V., 2013

Canon Europe Ltd
3 The Square, Stockley Park
Uxbridge, Middlesex
UB11 1ET, UK