










PowerEdge Rack Servers

Dell EMC PowerEdge Rack Servers help you build a modern infrastructure that minimizes IT challenges and drives business success.

Choose from a complete portfolio of 1-2-and-4 socket rack servers to deliver high core density for your traditional applications, virtualization and cloud-native workloads. Enhanced memory speeds, faster NVMe storage options¹ and BIOS tuning allows you to match performance to your workload for ultimate efficiency.

	R940	R940xa	R840
			
Specifications	Powerful performance: In-memory databases	Extreme acceleration: GPU database acceleration and machine learning	Turbocharge data analytics: Data-intensive workloads, HFT and dense virtualization
Processor	4 x 2 nd Generation Intel® Xeon® Scalable processors	4 x 2 nd Generation Intel® Xeon® Scalable processors	4 x 2 nd Generation Intel® Xeon® Scalable processors
Memory (DDR4 DIMM slots & max)	48 (15.36TB)	48 (15.36TB)	48 (15.36TB)
Disk drives up to	24 x 2.5"	32 x 2.5"	26 x 2.5"
NVMe drives up to	12	4	24
PCIe slots up to	13 (Gen3)	12 (Gen3)	6 (Gen3)
Accelerator Support up to	-	4 x DW GPUs or 4 x DW or 8 x SW FPGAs	2 x DW GPUs or 2 x SW or DW FPGAs
Rack height (U)	3	4	2
Integrated Security	TPM 1.2/2.0 optional, Digitally Signed Firmware, Chassis Intrusion Alert and Secure Boot being standard security on all racks. Integrated security features such as Silicon Root of Trust, System Lockdown and System Erase come standard on all racks.		

	R740xd 	R740 
Specifications	Scalable storage performance: SDS, service providers, and big data servers	Optimal application performance: VDI and cloud workloads
Processor	2 x 2 nd Generation Intel® Xeon® Scalable processors	2 x 2 nd Generation Intel® Xeon® Scalable processors
Memory (DDR4 DIMM slots & max)	24 (7.68TB)	24 (7.68TB)
Disk drives up to	32 x 2.5" or 18x 3.5"	16 x 2.5" or 8 x 3.5"
NVMe drives up to	24	-
PCIe slots up to	8 (Gen3)	8 (Gen3)
Accelerator Support	3 x DW or 6 x SW GPUs or 3 x DW or 4 x SW FPGAs	3 x DW or 6 x SW GPUs or 3 x DW or 4 x SW FPGAs
Rack height (U)	2	2
Integrated Security	TPM 1.2/2.0 optional, Digitally Signed Firmware, Chassis Intrusion Alert and Secure Boot being standard security on all racks. Integrated security features such as Silicon Root of Trust, System Lockdown and System Erase come standard on all racks.	


	R740xd2 	R640 
Specifications	Enterprise content server: Media streaming and SDS	Performance and density: Dense scale-out data center computing and storage
Processor	2 x 2 nd Generation Intel® Xeon® Scalable processors	2 x 2 nd Generation Intel® Xeon® Scalable processors
Memory (DDR4 DIMM slots & max)	16 (512GB)	24 (7.68TB)
Disk drives up to	26 x 3.5" or 16 x 3.5" + 10 x 2.5" ²	12 x 2.5" or 4 x 3.5"
NVMe drives up to	-	10
PCIe slots up to	5 (Gen3)	3 (Gen3)
Accelerator Support	-	1 x SW GPU or 1 x SW FPGA
Rack height (U)	2	1
Integrated Security	TPM 1.2/2.0 optional, Digitally Signed Firmware, Chassis Intrusion Alert and Secure Boot being standard security on all racks. Integrated security features such as Silicon Root of Trust, System Lockdown and System Erase come standard on all racks.	

	R540	R440	R340
Specifications	Balanced and adaptable: Mail messaging and virtualization	Scale-out computing: HPC, web tech and scale-out infrastructure	Accelerate business growth: ROBO productivity and data-intensive applications
Processor	2 x 2nd Generation Intel® Xeon® Scalable processors	2 x 2nd Generation Intel® Xeon® Scalable processors	1 x Intel Xeon E-2200, Intel Core i3®, Intel Pentium®, or Intel Celeron® processor
Memory (DDR4 DIMM slots & max)	16 (1TB)	16 (1TB)	4 (64GB)
Disk drives up to	14 x 3.5"	10 x 2.5" or 4 x 3.5"	8 x 2.5" or 4 x 3.5"
NVMe drives up to	-	4	-
PCIe slots up to	5 (Gen3)	2 (Gen3)	N/A
Rack height (U)	2	1	1
Integrated Security	TPM 1.2/2.0 optional, Digitally Signed Firmware, Chassis Intrusion Alert and Secure Boot being standard security on all racks. Integrated security features such as Silicon Root of Trust, System Lockdown and System Erase come standard on all racks.		

	R240
Specifications	Compute made simple: small business and service provider workloads
Processor	1 x Intel Xeon E-2200, Intel Core i3®, Intel Pentium®, or Intel Celeron® processor
Memory (DDR4 DIMM slots & max)	4 (64GB)
Disk drives up to	4 x 2.5" or 4 x 3.5"
NVMe drives up to	-
PCIe slots up to	N/A
Rack height (U)	1
Integrated Security	TPM 1.2/2.0 optional, Digitally Signed Firmware, Chassis Intrusion Alert and Secure Boot being standard security on all racks. Integrated security features such as Silicon Root of Trust, System Lockdown and System Erase come standard on all racks.

	R7525	R6525	R7515
Specifications	Powerful performance and flexibility: All flash SDS, VDI and data analytics	Dense virtualization: HPC, DenseVDI and Virtualization	Powerful performance and scalability: SDS, Virtualization and Data Analytics
Processor	2 x 2 nd Gen AMD EPYC™ Processors; up to 64 cores per Processor	2 x 2 nd Gen AMD EPYC™ Processors; up to 64 cores per Processor	1 x 2 nd Gen AMD EPYC™ Processor; up to 64 cores per Processor
Memory (DDR4 DIMM slots & max)	32 (4TB)	32 (4TB)	16 (2TB)
Disk drives up to	24 x 2.5" or 12 x 3.5"	8 x 2.5" or 4 x 3.5"	12 x 3.5" or 8 x 3.5"
NVMe drives up to	24	12	24
PCIe slots up to	8 (Gen4)	3 (Gen4)	2 (Gen3) 2 (Gen4)
Rack height (U)	2	1	2
Integrated Security	TPM 1.2/2.0 optional, Digitally Signed Firmware, Chassis Intrusion Alert and Secure Boot being standard security on all racks. Integrated security features such as Silicon Root of Trust, System Lockdown and System Erase come standard on all racks.		

	R6515
Specifications	High density compute Virtualization, HCI and NFV
Processor	1 x 2 nd Generation AMD EPYC™ Processor; up to 64 cores per Processor
Memory (DDR4 DIMM slots & max)	16 (2TB)
Disk drives up to	8 x 2.5" or 4 x 3.5"
NVMe drives up to	10
PCIe slots up to	1 (Gen3) 1 (Gen4)
Rack height (U)	1
Integrated Security	TPM 1.2/2.0 optional, Digitally Signed Firmware, Chassis Intrusion Alert and Secure Boot being standard security on all racks. Integrated security features such as Silicon Root of Trust, System Lockdown and System Erase come standard on all racks.




“We’ll save 35 percent on a five-year TCO with the Dell EMC VDI solution. The PowerEdge rack servers were ready to go out of the box for hosting our storage requirements. We saved 30 percent compared to a standalone SAN.”

Bruce Salisbury IT Director, Capital Area Human Services



“We can deploy our PowerEdge servers in minutes because iDRAC is always on and integrates with Dell EMC OpenManage...”

Aldo Armiento, Chief Technology Officer, Immobiliare.it



“Dell EMC PowerEdge servers are the foundation of the work we do here. They provide the automation, the security, the flexibility, and the reliability to make sure that we can continue to focus on what we do best as a company.”

Ryan Garipey Co-founder and Chief Technology Officer, OTTO Motors

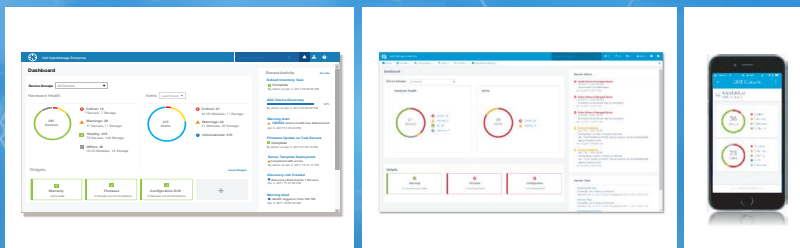
Dell EMC Solutions

When you buy a Dell EMC server, you get more than just hardware. You get access to IT solutions end-to-end. Dell and EMC bring together industry-leading expertise into a common platform to help you transform your data center.

Dell EMC can deliver PowerEdge technology at any level of integration – from a best-in-breed platform, to a pre-integrated fully turnkey hybrid cloud implementation or any step in-between. Combining the PowerEdge server infrastructure with Dell Services and Financial Solutions allows you to modernize your data center faster, more affordably and with less risk.



OpenManage Systems Management



Increase the productivity, reliability and cost effectiveness of your Dell EMC PowerEdge servers while making your IT operations more efficient as well. Designed for use by today's IT Professionals, the Dell EMC OpenManage Enterprise console simplifies, intelligently automates and unifies infrastructure management tasks.

Though primarily designed to monitor, configure and update tower, rack and modular PowerEdge servers, OpenManage Enterprise also provides end-to-end infrastructure monitoring capabilities for Dell EMC storage and networking devices plus third-party hardware too. Add OpenManage Mobile to enable your IT Pros to receive and take action on both Dell EMC and third-party hardware events anytime, anywhere.

OpenManage Integrations enables both hardware and software infrastructure management without leaving third party consoles such as VMware vCenter and Microsoft System Center.



Dell EMC Services



To fully implement a modern infrastructure, organizations require reliable, comprehensive IT services to drive IT transformations, accelerate adoption of new technologies and maximize productivity.

Architect: Get started with our IT Transformation Workshop to accelerate your transformation to becoming an agile business partner and broker of services to the business.

Implement: The ProDeploy Enterprise Suite helps you get more out of your new technology starting day one. Trust Dell EMC experts to lead deployments from basic hardware installations through planning, configuration and complex integrations.

Manage: The ProSupport Enterprise Suite ensures 24x7 access to senior ProSupport engineers along with automated proactive and predictive service enabled by SupportAssist. Our personalized service and preventative measures help you get ahead of problems before they happen.

Dell EMC Data Center Infrastructure

Dell EMC Data Center Infrastructure (DCI) simplifies and manages critical infrastructure in and around the data center serving the needs of your business.

A complete portfolio of racks, power and cooling solutions lets you scale as your data center needs grow.

To find out more visit Demand Generation Center on Partner Portal:

www.delltechnologies.com/partner/server

¹ Not all features are available on all platforms.

² Drives use hybrid carrier to fit in 3.5" drive bay. (For the R740xd2 - a hybrid configuration is available with up to 10 2.5" SSDs)

For a comprehensive list, visit dell EMC.com/servers. Product availability may vary by region. Please contact your Dell representative for more information.

© 2019 Dell Inc. or its subsidiaries. All Rights Reserved. Dell, EMC and other trademarks are trademarks of Dell Inc. or its subsidiaries. Other trademarks may be trademarks of their respective owners.

