

# SHARP®

POWERFUL PERFORMANCE IN A COMPACT HYBRID DESIGN



MX-B401



POWERFUL PERFORMANCE  
ANYWHERE YOU NEED IT

powerful



*Sophisticated hybrid design for versatile setup in countertop or floor-standing console configuration, expandable to 4-tray console with a maximum paper capacity of 2,100 sheets.*

Sharp combines the **SIMPLICITY AND CONVENIENCE** of network printers with the **MULTI-TASKING PRODUCTIVITY** of MFPs to achieve the best of both worlds. The MX-B401 is an exciting example of the **SHARP® FRONTIER SERIES**, bringing exceptionally crisp output closer to your workgroup with **HYBRID DESIGN** that has a small footprint to fit into environments others won't, yet isn't small on functionality. The **LARGE 8.5" WIDE COLOR TOUCH-SCREEN** simplifies operation by providing an intuitive user interface to keep ahead of today's fast-paced office document distribution needs. Incorporating next-generation **COMMON CONTROLLER ARCHITECTURE**, this model provides uniform functionality and operability as found in Sharp's **AWARD-WINNING MFP PRODUCT LINE**. Engineered to help reduce operating costs and downtime, the MX-B401 is easier than ever to set up, monitor, and maintain. This model offers modular expandability, remote-access capabilities, and a **VALUE-ADDED APPROACH** to network and software integration. The latest in a long line of innovative products from today's fastest-growing name in office electronics, it also incorporates Sharp's **AWARD-WINNING SHARP OSA® PLATFORM** and the industry-leading Sharp security suite to help protect data and control access. In action, its ease and versatility will change your mind about MFPs. More power, less complexity...that's **WORK WITHOUT LIMITS**.

## PRODUCTIVITY IN ACTION TO SPEED OUTPUT AND STREAMLINE DOCUMENT WORKFLOW

The Sharp MX-B401 brings fast output,  
superior print quality and compact

footprint closer to the workgroup.

Advanced and easy to operate features

will help maximize efficiency, simplify

- Crisp black-and-white documents can be quickly and accurately produced at speeds up to **40** pages per minute.
- Powerful 800 MHz controller for **true multi-tasking** performance and increased multi-functional productivity.
- Large **8.5" high resolution, wide-screen color touch display** with intuitive graphical user interface that makes advanced copying, printing, scanning and faxing functions easy to use.
- Sharp's powerful **ImageSEND™** technology securely scans documents in color or monochrome to up to seven destinations, including: USB devices, network folders, e-mail, fax machines and desktop PCs, at speeds up to 35 images per minute. You get one-touch distribution features that centralize document workflow helping save time and money.
- Third-generation Sharp OSA development platform enables users to **access network applications** directly from the device's touch-panel display, helping to **reduce redundancy and streamline workflow**.



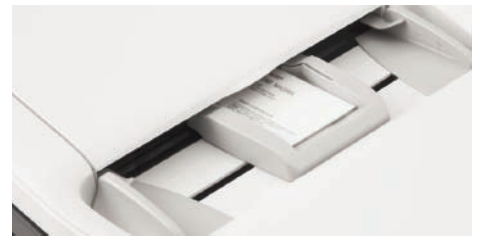
# workflow

document workflow and reduce  
operating expense. Incorporating Sharp's  
next-generation common controller  
architecture, this powerful multi-tasking  
MFP meets the fast-paced needs of  
today's modern office.



- **Optional Inner Finisher** can be added without taking up much additional space. The space-efficient finisher not only provides exceptional productivity but also automates time-consuming tasks such as stapling, sorting and offset stacking.
- **Direct USB Scanning and Printing** provides a whole new level of convenience. It comes in handy for scanning documents directly to USB memory devices and is an easy way to print PDF documents.
- Sharp's easy to use Document Filing System provides a high-capacity 38 GB of hard drive space for **fast document storage and retrieval**, with **thumbnail view and image preview modes** that allow users to easily locate, identify and retrieve files.

- The optional **Business Card Feeder** can automatically feed and scan business cards and is capable of working with commercially available business card scanning software to automate contact database entry.



*Optional business card feeder.*

- The cutting-edge Sharp **Remote Front Panel** feature allows administrators and help desk professionals to access and control the device from a remote PC workstation. This panel can also be used to help facilitate key operator training.
- The optional **Super G3 Fax Kit** with intelligent Inbound Fax Routing delivers lightning-fast faxing for busy workgroups.



*Front Panel USB 2.0 port for easy access.*



**INNOVATIVE DESIGN  
TO SAVE TIME AND MONEY**

For years, digital multifunction printer/copiers have added more features and functions.

But functionality can lead to over-complexity. That's why Sharp created the **HYBRID DESIGN**

of the MX-B401, integrating strategies to help **SIMPLIFY OPERATION, REDUCE COSTS**

and **PROTECT THE ENVIRONMENT**. The new Sharp MX-B401 MFP model is designed to

make it **EASIER AND FASTER** to set up, operate, control, monitor, manage and maintain.

# innovative

Sophisticated but intuitive, this model enables even first-time users to operate **PRINTING,**

**COPYING, SCANNING AND FAXING** functions with greater ease and efficiency. This sleek

model is engineered for **LOW MAINTENANCE** and **QUICK SERVICEABILITY**. Like

traditional MFPs, it incorporates long-life tri-component supplies consisting of separate

toner, developer and drum cartridges, to help **LOWER COST PER PAGE** and **REDUCE**

**TOTAL COST OF OWNERSHIP**. Finally, the MX-B401 is **ENVIRONMENTALLY-FRIENDLY**

in design, engineering and manufacturing. The new model has been designed with a

**STRONG COMMITMENT** to help to protect the environment. It assists businesses

to reduce energy consumption, minimize waste and recycle toner more easily through

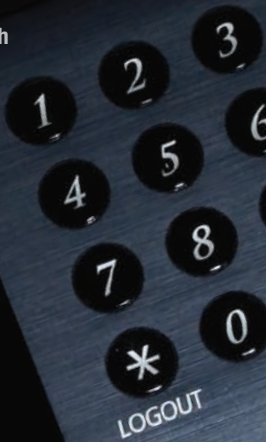
Sharp's **TONER RECYCLING PROGRAM**.

JOB STATUS

SYSTEM  
SETTINGS

PRINT READY  
DATA DATA

SEND LINE  
DATA



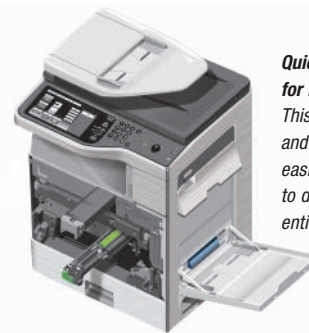
**USER-FRIENDLY, ECO-FRIENDLY OPERATION  
TO HELP SPEED WORK, PROLONG LIFE AND REDUCE COST**



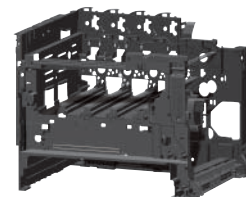
The Sharp MX-B401 is designed to minimize service requirements and maximize uptime. This model employs long-life, quick-replace cartridges to help extend supplies replenishment intervals and dramatically reduce downtime. Maintenance is trouble-free, with clean and simple replacement of supplies and machine maintenance procedures that can be performed quickly and easily by service technicians or help desk professionals.

- By utilizing a long-life **tri-component supplies** system consisting of individual toner, developer and drum cartridge, the working life of developer and drums is significantly prolonged—and consumables yield can be up to **six times higher** than that of typical mono-unit consumable systems.
- Sharp encourages customers to make use of the **Toner Recycling Program** that provides a pre-paid shipping label for returning used Sharp toner cartridges to our recycling facility. Learn more at: [www.sharppusa.com/recycle](http://www.sharppusa.com/recycle).
- Supplies can be replenished with **no mess and no tools required**. Maintenance parts such as primary transfer belt, transfer roller, fuser, paper feed rollers and document feed rollers are also designed for quick, tool-free replacement.
- Power consumption on the MX-B401 is among the lowest in its class. This model complies with the Energy Star™ Program and the RoHS program to minimize energy consumption and the use of chemicals and materials that can harm the environment.
- Built on a sophisticated and **rugged unibody frame**, the MX-B401 is constructed to absorb vibration, reduce operating noise, and consistently produce superior image quality.
- Sharp's **second-generation micro-fine toner technology** and new developer combine to reduce graininess, produce clear reproduction of fine lines and halftones, and offer a lower consumption rate than conventional toner. The result is breathtaking image quality, less packaging materials and longer replacement intervals.

- Environmental leadership is a long tradition at Sharp. In 2007, we received the **Green Contractor Award** and the **Evergreen Award** from the U.S. government in recognition of our overall commitment to environmentally-friendly products, services, manufacturing procedures and for our recycling and waste reduction practices. For more information, please visit [www.sharppusa.com/environment](http://www.sharppusa.com/environment).
- In replenishing supplies, **downtime is virtually eliminated** to lower operating costs for end-users—and waste is reduced because the drums and developers are **used to their maximum life**.



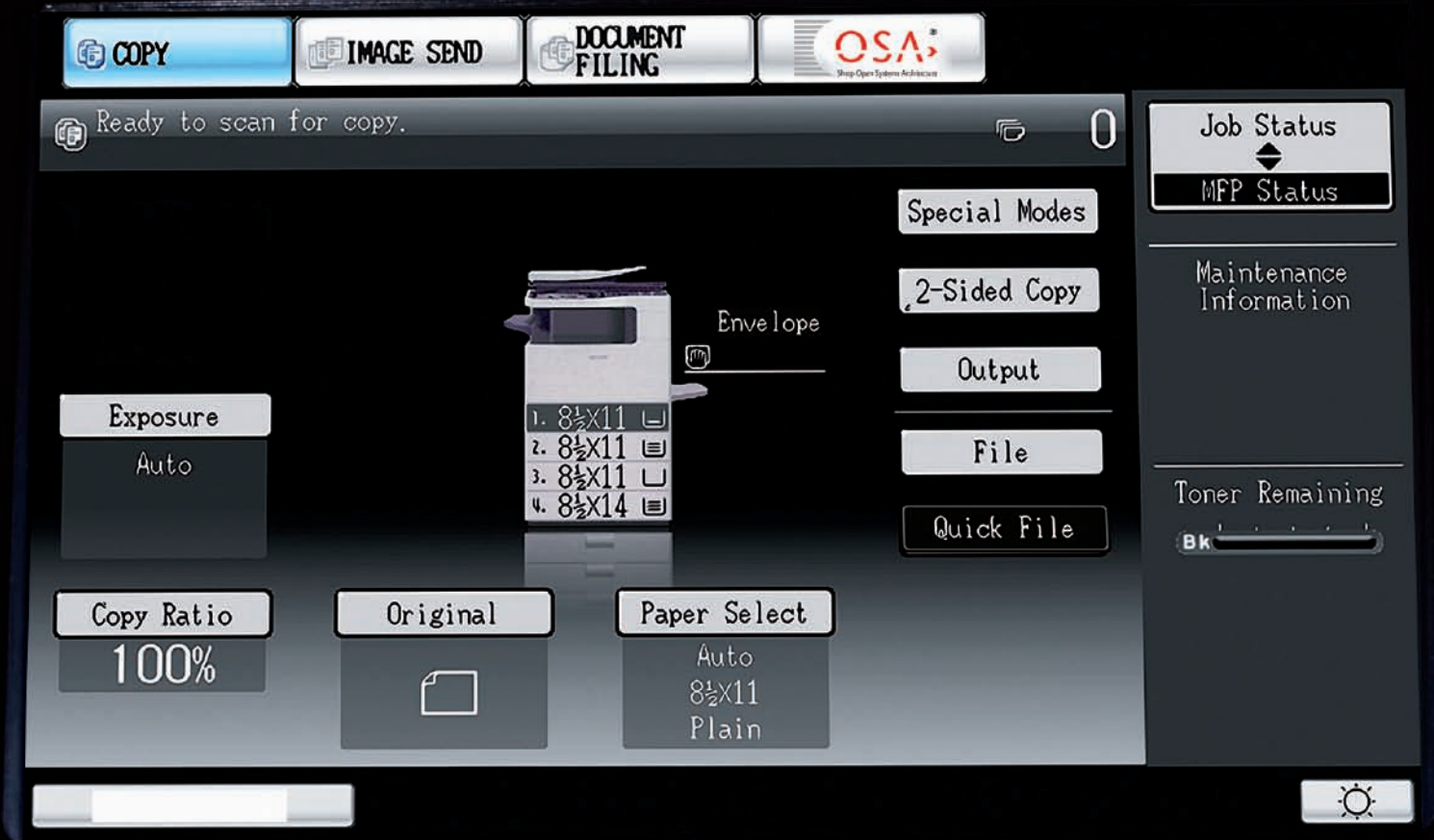
**Quick Replace Cartridge for Easy Maintenance**  
*This design makes service and general maintenance easier without the need to disassemble the entire machine.*



**Highly-Rigid Main Frame**  
*Helps better protect and isolate critical machine components.*

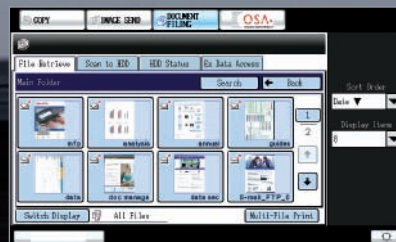


# navigation



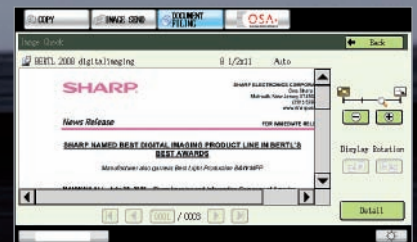
#### Image Send Screen

Intuitive graphic interface lets you quickly & easily select, change & view scanning settings right from the panel.



#### Thumbnail Previewing

Quickly & easily locate, retrieve & print filed documents and stored faxes in full color.



#### Image Check

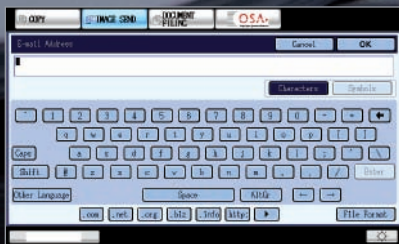
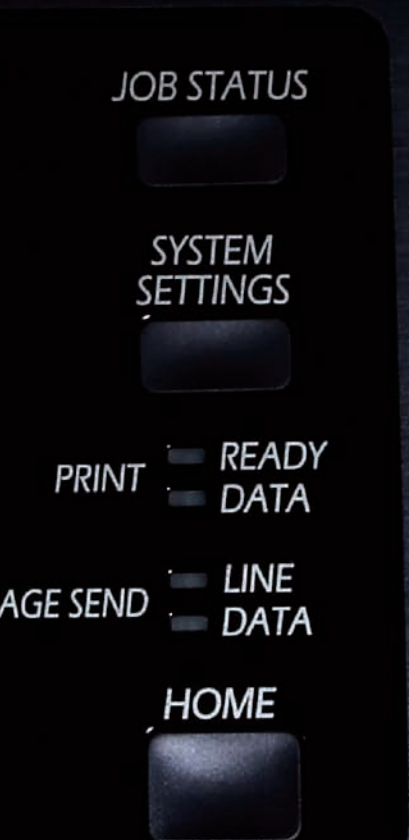
Ability to view & check the image quality of stored file. Easily zoom, rotate and scroll.



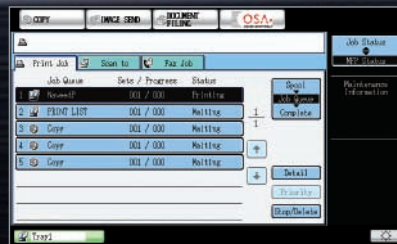
## SIMPLE OPERATION WITH TOTAL CONTROL OVER INPUT, OUTPUT AND DOCUMENT ACCESS

At last, an on-board LCD touch-screen so easy to use, to help every operator be more productive.

The Sharp MX-B401 features bright, high-contrast 8.5" color touch-navigation panels with superior reproduction, wide viewing angle, and thumbnail document preview. This MFP makes it easy to process complex print jobs, designate duplex and offset stacking, and deliver more documents in less time.



**Qwerty Keyboard**  
On-screen, touch panel keyboard makes it easy to enter e-mail addresses and more.



**Job Status**  
Display the status of all print, copy, scan & fax jobs waiting in queue. Can't wait for a copy? Instantly prioritize your job.



**Error Recovery**  
Easily rectify problems following on-screen, illustrated step-by-step prompts.

PERSONALIZED AND VERSATILE  
APPLICATION INTEGRATION

# versatile



**Sharp OSA® technology at a glance**

- Automate tasks and save time with seamless integration between the MX-B401 and network applications
- Centralized applications minimize set-up and installation on multiple Sharp products
- Virtually eliminates repetitive tasks and streamlines workflow, increasing efficiency
- Maximize your return on investment with tighter integration among IT assets
- Industry standard programming leads to faster deployment of new solutions



Today's multifunction products must be versatile enough to handle fast-changing system requirements and security demands. For Sharp, that's a given—but we've gone much further. Designed for today's mobile and flexible workplace, the MX-B401 supports the **AWARD-WINNING SHARP OSA** development platform. This **3RD GENERATION TECHNOLOGY** delivers unparalleled efficiency, control and convenience. With **SEAMLESS INTEGRATION**, Sharp OSA-developed applications provide a window into your business applications, so you can access what you need, when you need it, right from the touch panel. With the ability to **PERSONALIZE APPLICATIONS** and processes specific to your business, Sharp OSA technology can help eliminate redundancy and streamline workflow. Utilizing **INDUSTRY STANDARD NETWORK PROTOCOLS**, such as **XML** and **SOAP**, Sharp OSA technology allows this MFP to communicate with many different applications. As your integration and workflow needs change, count on Sharp's scalable technology to help **KEEP YOU AHEAD.**



## PROVEN PROTECTION FOR CONFIDENTIAL DATA, DEVICE ACCESS AND NETWORK SAFEGUARDS

The exchange of digital documents in the 21st century creates new challenges for network security. Sharp has developed an award-winning, multi-layered security system to help protect valuable



### Authority Group and Access Control

Advanced account management enables administrators to set authority groups for access to features of the MX-B401. Administrators can control which department, for instance, has full access to copying, printing, scanning and/or fax. Walk up users enter a code, Local Name and Password, or LDAP User Authentication to access the features assigned to their group. Users can also login utilizing a human interface device (HID) such as a Smartcard or Common Access Card (CAC).\*



### Documents Remain Confidential

To help protect your printed documents from unauthorized viewing, the MX-B401 offers encrypted PDF files for printing and scanning as well as **Confidential Printing** that requires users to enter a PIN code in order to print a queued document. Additionally, **Secure Fax Release** ensures received fax documents are held in memory until an authorized user enters a PIN code. So compliance with healthcare regulations such as HIPAA is easier.



information and maintain employee confidentiality. No company has more experience in maintaining digital security—so corporate end-users and IT professionals can count on the proven safeguards of the MX-B401.



### Data Erase and Encryption\*\*

To help protect your data, the MX-B401 offers an optional data security kit that encrypts document data using **AES** (Advanced Encryption Standard) **encryption**. Additionally, the data security kit erases the temporary memory on the hard drive by overwriting the encrypted data up to seven times, offering an unprecedented level of assurance.



### Tracking and Auditing Information

Legislation and industry policies require companies to be more aware of information flow from their offices. Sharp offers both built-in and additional hardware/software which allows users to control, access and track usage of each device on the network.



### Control Device Access Over the Network

To help restrict access to the device over the network, the MX-B401 offers IPsec, SMB and extended support for **SSL Encryption** (Secure Sockets Layer), **IP/MAC address filtering**, IEEE 802.1x authentication, protocol enable/disable and port management for maximum security.



These scalable security offerings aim to protect your intellectual property, preserve confidential information and help your business to meet regulatory requirements, such as the Health Insurance Portability and Accountability Act (HIPAA), and the Gramm-Leach-Bliley Act (GLB). For additional information visit: [www.sharpsusa.com/security](http://www.sharpsusa.com/security)



### Network Scanning Access

To help protect your network from unauthorized e-mail communications, the MX-B401 supports **User Authentication**, requiring users to login before performing any network scanning operations.



"Most Outstanding MFP Line of the Year" Award 2007



"Most Secure MFP Range" Award—5th Consecutive Year



"Best Development Platform—Sharp OSA® Technology" Award 2008

\* Some features require optional equipment.

\*\* Data Security Kit not available at time of launch.

## DEVICE MANAGEMENT MAXIMIZES PRODUCTIVITY AND CONTROL



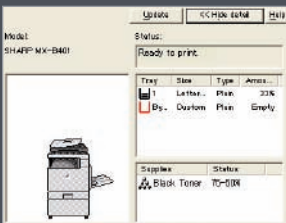
**SHARP**

**The Sharp 24/7 Training Advantage**  
To make managing your new MX-B401 document system simple and easy, ask your local Authorized Sharp Dealer about My Sharp, a dedicated customer-care website that offers solutions, resources and information specific to your new Sharp product.

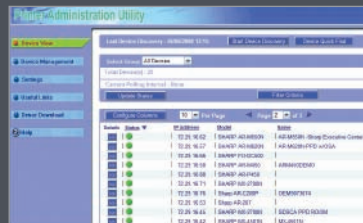
Sharp's MX-B401 combines integrated, user-friendly software with robust device management technology to help IT professionals manage usage, control costs and minimize downtime. To maximize opportunities while reducing document and support costs, office environments must **MANAGE DOCUMENT WORKFLOW** with greater intelligence. The Sharp **ADMINISTRATION UTILITY SUITE** is designed to do just that. It allows administrators to **MANAGE DEVICES** more efficiently. They can remotely manage the set-up, configuration, device settings and more! The convenience of an Embedded Web Page gives users advanced **WEB-BASED MANAGEMENT TOOL** for network scanning, profiles and web-links—while

# manage

administrators can access device settings, account information and security settings to help **SAVE TIME** and **IMPROVE PRODUCTIVITY**. Sharp's device management system lets you **TAKE CHARGE** of usage and costs. A new **REMOTE FRONT PANEL** feature allows help desk professionals and support personnel to view and control the device's LCD Panel remotely from any authorized networked PC. Our Printer Status Monitor lets network users **VIEW PRINTER CONDITIONS**, check paper and toner levels right from the workstation. Powerful, Intuitive Sharpdesk® Software gives you **GREATER CONTROL OF SCANNED DOCUMENTS**.



Printer Status Monitor



Printer Administration Utility



Embedded Web Page



Remote Front Panel



# MX-B401 SPECIFICATIONS

## Main Specifications

<b>MX-B401</b>	Includes multi-tasking controller, 80 GB HDD with document filing system, PCL® 5e/PCL 6/PostScript® 3 network printing, network scanning, 50-sheet RSPF, auto-duplex, 500-sheet paper drawers and 100-sheet bypass. Black developer and drum is included in the box.
<b>Type</b>	Monochrome multi-function digital document system
<b>Functions</b>	Copy, print, network print, network scan, document filing and fax <sup>1</sup>
<b>Copy System</b>	Dry electrostatic transfer/Dual component developer/Magnetic brush development/OPC drums/Heat Roller fusing/Xenon Lamp Exposure
<b>Originals</b>	Sheets and Bound Documents
<b>Max Original Size</b>	8-1/2" x 14"
<b>Copy Size</b>	Min 5-1/2" x 8-1/2"/Max 8-1/2" x 14"
<b>Copy Speed</b>	40 ppm (Letter)
<b>Multiple Copy</b>	Max: 999 copies
<b>First Copy Time</b>	Platen glass: 8.0 sec or less RSPF: 9.9 sec or less (Based on Letter original using tray 1)
<b>Warm-Up Time</b>	90 seconds or less
<b>Magnification</b>	50% to 200% in 1% increments (50 to 200% for RSPF)
<b>Original Feed</b>	50-sheet RSPF with original size detection
<b>Scan Speed</b>	Copy mode (Simplex): Up to 35 ipm (B&W or color) @ 600 X 300 dpi. Network Scan (Simplex): Up to 35 ipm (B&W or color) @ 200 x 200 dpi.
<b>Original Sizes</b>	5-1/2 x 8-1/2 / 8-1/2 x 14 (1-sided: 9 to 32 lb. bond; 2-sided: 13 to 28 lb. bond)
<b>Paper Feed System</b>	Standard: 500 sheet paper drawer (Letter/Legal) and 100-sheet bypass tray (Letter/Legal). Optional: Up to 3 additional 500-sheet paper drawers (Letter/Legal) <sup>2</sup>
<b>Paper Types</b>	Paper drawers: 16-28 lb. bond. Other paper types include: plain, pre-printed, recycled, pre-punched, letterhead, and color paper. Bypass Tray: 16-28 lb. bond (plain paper), 15-16 lb. (thin paper), 28 lb. bond-110 lb. index (heavy paper), 20-24 lb. (Monarch/Com-10 envelope). Other types include label paper, gloss paper, pre-printed, recycled, pre-punched, letterhead, color film and OHP Film.
<b>Duplexing</b>	Standard automatic duplex copying and printing
<b>CPU</b>	Power QUICCIII-MPC8533E/800MHz
<b>Interface</b>	RJ-45 Ethernet (10Base-T/100Base-TX/1000Base-T), USB 2.0 (Host Port), USB 2.0 (Device Port)
<b>Memory</b>	Standard 512 MB (copier); 512 MB (printer/network scanning) memory
<b>Hard Disk Drive</b>	80 GB; 38 GB Main Folder/12 GB Custom/Quick Folder document filing system and electronic sorting
<b>Copy Resolution</b>	Scan: 600 dpi; Copy output: 600 dpi
<b>Exposure Control</b>	Modes: Automatic (Color: Magical View, B&W: Character AE) Text, Text/Photo, Text/Printed-Photo, Printed-Photo, Photo, Map, Pale-Color document. Settings: Auto exposure control or 9 step manual exposure.
<b>Halftone</b>	256 gradations/2 levels (monochrome)
<b>Copy Features</b>	Scan-Once-Print-Many, electronic sorting, Integrated offset-stacking, Auto Paper Sensing (APS), Auto Magnification Sensing (AMS), Auto tray switching (ATS), rotation copy, reverse copy, margin shift, edge erase, OHP insertion, card shot, reverse image, black-white reversal, centering, proof copy, 2-in-1, photo repeat, document filing, job programs, date/character/page stamp
<b>Account Control</b>	Up to 1000 users. Supports user-number authentication (on device), login name/management, date/character/page stamp, Copy, Print, Scan, Fax and Document Management
<b>Output Tray Capacity</b>	Main output tray (top) 250 sheets (face down)
<b>Firmware Management</b>	Flash ROM with local (USB); network update capability and firmware update 1 to N with PAU (Printer Administration Utility)
<b>Configuration Method</b>	Web-based management system with user/administrator level login security, cloning (1 to N) with PAU and remote front panel access
<b>Service/Maintenance</b>	Remote Front Panel Access to service logs and click counts
<b>Power</b>	AC 100-127VAC, 60HZ, 12 AMPS
<b>Power Consumption</b>	Maximum: 1.44kW or less.

<b>Weight</b>	Approx 97 lbs (base model) including toner & developer cartridges
<b>Dimensions</b>	22-3/64" x 17-1/4" x 28-7/64"

## Network Printing System (Standard)

<b>PDL</b>	PCL5e, PCL6, PostScript 3 compatible, optional XPS
<b>Resolution</b>	1200 dpi, 600 dpi
<b>Print Speed</b>	40 pages per minute (Letter)
<b>Print Drivers</b>	Windows® 98, Windows ME, Windows NT® 4 (with SP5 or later), Windows 2000, Windows Server® 2003, Windows Server 2008, Windows XP, Windows XP x64, Windows Server 2003 x64, Windows Server 2008 x64, Windows Vista®, Windows Vista x64, MAC OS® 9.0-9.2.2, OSX (including 10.2.8, 10.3.9, 10.4.11, 10.5-10.5.5), all MAC PPD.

<b>Features</b>	Continuous printing, duplex printing, pamphlet printing, N-up printing, image rotation, different cover page/last page, transparency inserts, carbon copy print mode, fit-to-page, poster print, margin shift, mirror image, watermarks, overlay, confidential printing, confidential batch print, print hold, bypass printing, job priority printing and direct printing. (Note: Some features not available on certain print drivers)
-----------------	---

<b>Direct Printing</b>	File Types: TIFF, JPEG, PCL, PRN, TXT, PDF, Encrypted PDF, Postscript and XPS'. Methods: FTP, WebPage, E-mail and USB Memory
------------------------	--

<b>Resident Fonts</b>	80 Outline Fonts
<b>Interface</b>	RJ-45 Ethernet 10Base-T/100Base-TX/1000Base-T
<b>Operating Systems</b>	Windows 98, ME, NT4.0, 2000, XP, 2003/2008 Server, Vista, Novell® Netware® 3x, 4x, 5x, MAC OS-9.0, MAC OS-X, Sun® OS 4.1x, Solaris® 2 x, Unix®, Linux®, Citrix® (Metaframe, Presentation Server 4, 4.5) and Windows Terminal Services

<b>Network Protocols</b>	TCP/IP (IPv4, IPv6, IPSEC) SSL (HTTP, IPP, FTP), SNMPv3, 802.1x for Windows and Unix. LPD and LPR for UNIX. IPX/SPX® for Novell environments. EtherTalk® and NetBEUI, AppleTalk for Macintosh® environments.
--------------------------	--

<b>Printing Protocols</b>	LPR, IPP, IPPS, PAP, Raw TCP (port 9100), FTP and Novell Pserver/Rprinter
<b>Network Security</b>	IP/Mac address filtering, protocol filtering, port management, user authentication and document administration.
<b>Security Standards</b>	IEEE 2600-2008, DoD (NSTISSP) #11, DoD Directive 8500.2, DoD (DISA)

## Network Scanning Systems (Standard)

<b>Max Original Size</b>	8-1/2" x 14"
<b>Optical Resolution</b>	600 dpi
<b>Output Modes</b>	600 dpi, 400 dpi, 300 dpi, 200 dpi, 100 dpi
<b>Scan Modes</b>	Color, monochrome, grayscale
<b>Image Formats</b>	Monochrome: TIFF, PDF, Encrypted PDF, XPS' Color: Grayscale, Color TIFF, JPEG, PDF, Encrypted PDF, XPS' Internet Fax: TIFF-FX, FIFF-F, JIFF-S'

<b>Image Compression</b>	Monochrome Scanning: Uncompressed, G3 (MH), G4 (MR/MMR) Color/Grayscale: JPEG (High, middle, low) Internet Fax mode: MH/MMR (option)
--------------------------	--

<b>Scan Destinations</b>	E-mail, Desktop, FTP, Folder (SMB), USB, Internet fax (option), Super G3 fax (option)
<b>One-Touch Destinations</b>	Up to 999 (combined scan destinations)

<b>Group Destinations</b>	Up to 500
<b>Programs</b>	48 (combined)
<b>Max. Jobs in Memory</b>	Up to 94

<b>Network Protocols</b>	TCP/IP and SSL (Includes HTTP, SMTP, LDAP, FTP, POP3), SMB, ESMTMP and 802.1x
<b>Network Security</b>	E-mail server user authentication for LDAP and Active Directory
<b>Software</b>	Sharpdesk® desktop document management software (1 user license)

## B&W Super G3 Fax Kit (Option)

<b>Transmission Mode</b>	Super G3, G3
<b>Modem Speed</b>	33.6 KBPS <sup>3</sup>
<b>Compression</b>	JBIG, MMR, MR, MH
<b>Methods</b>	
<b>Scanning Method</b>	Sheet fed simplex or duplex or book

<b>Max Transmit Resolution</b>	400 dpi
<b>Transmit Speed</b>	Approximately 2 seconds with Super G3/JBIG <sup>4</sup>
<b>Auto Dialing</b>	Up to 999 (combined scan destinations)
<b>Group Dial/Routing</b>	Up to 500
<b>Destinations</b>	
<b>Inbound Fax Routing</b>	Forwards received fax data to E-mail, FTP, Desktop, SMB
<b>Long Length Originals</b>	Up to 19.5" (for transmission)
<b>Programs</b>	48 (combined)
<b>Memory</b>	8 MB (Exclusive)
<b>Halftone</b>	256 levels
<b>Features</b>	Quick on-line transmission, direct transmission, F-Code transmission/reception, rotate transmission, anti-junk fax reception, automatically staple received faxes, secure fax release, out of paper memory reception, auto redial, duplex reception transaction reports, activity reports and PC Fax.

## Inner Finisher (Option)

<b>Type</b>	Built in Finisher
<b>Output Capacity</b>	Up to 280 sheets (Letter/Legal), 100 postcard, 20 envelope
<b>Output Delivery</b>	Face down
<b>Stapling Media</b>	Plain/Thin/Heavy/Recycled/Letterhead/Pre-punched/Colored/Preprinted paper
<b>Stapling Positions</b>	Single corner position
<b>Power Source</b>	Supplied from the main unit
<b>Stapling</b>	30 sheets Letter/legal
<b>Stapled Sets</b>	10 bundles or 300 sheets (letter/legal)
<b>Weight</b>	Approx 19.8 lbs
<b>Dimensions (When Tray is expanded)</b>	18-2/3" (w) x 13-1/16" (d) x 6-3/16" (h)

## Optional Equipment

<b>MX-FN12</b>	Inner Finisher
<b>MX-CFABB</b>	Base Plate with locking casters
<b>MX-CFABD</b>	Deluxe Cabinet with door and locking casters
<b>MX-CSX1</b>	500 sheet Paper Feed Unit for Tray 2
<b>MX-CSX2</b>	500 sheet Paper Feed Unit for Trays 3 & 4
<b>MX-PUX1</b>	XPS Expansion Kit (Requires MX-SHP1GBXPS)
<b>MX-SHP1GBXPS</b>	Expansion Memory 1 GB (Required for MX-PUX1)
<b>AR-PF1</b>	Bar Code Font Kit
<b>MX-FR16U</b>	Commercial Data Security Kit. Not available at time of launch.
<b>MX-FXX3</b>	Fax Expansion Kit
<b>MX-FWX1</b>	Internet Fax Expansion Kit
<b>MX-AMX1</b>	Application Integration Module
<b>MX-AMX2</b>	Application Communication Module
<b>MX-AMX3</b>	External Accounting Module
<b>MX-USX1</b>	Sharpdesk 1 License Kit
<b>MX-USX5</b>	Sharpdesk 5 License Kit
<b>MX-US10</b>	Sharpdesk 10 License Kit
<b>MX-US50</b>	Sharpdesk 50 License Kit
<b>MX-USA0</b>	Sharpdesk 100 License Kit
<b>MX-BTX1</b>	Business Card Feeder

## Supplies

<b>MX-B40NT1</b>	Black Toner Cartridge
<b>MX-C40NVB</b>	Black Developer
<b>MX-C40NRB</b>	Black Drum Cartridge
<b>MX-B40U1</b>	Primary Transfer Belt Unit
<b>MX-C31U2</b>	Secondary Transfer Roller Unit
<b>MX-C31FU1</b>	Fusing Unit (120V)
<b>MX-C31FL</b>	Ozone Filter Kit
<b>MX-B40HB</b>	Toner Collection Container
<b>MX-C31RT</b>	Feeding Roller Kit
<b>MX-C31MR</b>	MF Feeding Roller Kit
<b>MX-C31DF</b>	DF Roller Kit
<b>MX-SCX1</b>	Staple Cartridge (3 cartridges per carton)

<sup>1</sup> Some features require optional equipment

<sup>2</sup> Paper capacity is based on letter size paper

<sup>3</sup> Actual transmission time will vary based on line conditions

<sup>4</sup> Based on Sharp Standard Test Chart with approximately 700 characters, letter size in standard resolution





**SHARP**<sup>®</sup>

SHARP ELECTRONICS CORPORATION  
Sharp Plaza, Mahwah, NJ 07495-1163  
1-800-BE-SHARP • [www.sharpsusa.com](http://www.sharpsusa.com)

Design and specifications subject to change without notice. Sharp, Sharp OSA, Sharpdesk, My Sharp, and all related trademarks are trademarks or registered trademarks of Sharp Corporation and/or its affiliated companies. Windows, Windows NT, Windows Server and Windows Vista are trademarks or registered trademarks of Microsoft Corporation. All other trademarks are the property of their respective owners.