

Measure #12 (NQF 0086): Primary Open-Angle Glaucoma (POAG): Optic Nerve Evaluation – National Quality Strategy Domain: Effective Clinical Care

2016 PQRS OPTIONS FOR INDIVIDUAL MEASURES:
CLAIMS, REGISTRY

DESCRIPTION:

Percentage of patients aged 18 years and older with a diagnosis of primary open-angle glaucoma (POAG) who have an optic nerve head evaluation during one or more office visits within 12 months

INSTRUCTIONS:

This measure is to be reported a minimum of **once per reporting period** for patients seen during the reporting period. It is anticipated that clinicians who provide the primary management of patients with primary open-angle glaucoma (in either one or both eyes) will submit this measure.

Measure Reporting via Claims:

ICD-10-CM diagnosis codes, CPT codes, and patient demographics are used to identify patients who are included in the measure's denominator. CPT Category II codes are used to report the numerator of the measure.

When reporting the measure via claims, submit the listed ICD-10-CM diagnosis codes, CPT codes, and the appropriate CPT Category II code OR the CPT Category II code with the modifier. The modifiers allowed for this measure are: 1P- medical reasons, 8P- reason not otherwise specified. All measure-specific coding should be reported on the claim(s) representing the eligible encounter.

Measure Reporting via Registry:

ICD-10-CM diagnosis codes, CPT codes, and patient demographics are used to identify patients who are included in the measure's denominator. The listed numerator options are used to report the numerator of the measure.

The quality-data codes listed do not need to be submitted for registry-based submissions; however, these codes may be submitted for those registries that utilize claims data.

DENOMINATOR:

All patients aged 18 years and older with a diagnosis of POAG

Denominator Criteria (Eligible Cases):

Patients aged ≥ 18 years on date of encounter

AND

Diagnosis for primary open-angle glaucoma (ICD-10-CM): H40.10X0, H40.10X1, H40.10X2, H40.10X3, H40.10X4, H40.11X0, H40.11X1, H40.11X2, H40.11X3, H40.11X4, H40.1210, H40.1211, H40.1212, H40.1213, H40.1214, H40.1220, H40.1221, H40.1222, H40.1223, H40.1224, H40.1230, H40.1231, H40.1232, H40.1233, H40.1234, H40.1290, H40.1291, H40.1292, H40.1293, H40.1294, H40.151, H40.152, H40.153, H40.159

AND

Patient encounter during the reporting period (CPT): 92002, 92004, 92012, 92014, 99201, 99202, 99203, 99204, 99205, 99212, 99213, 99214, 99215, 99304, 99305, 99306, 99307, 99308, 99309, 99310, 99324, 99325, 99326, 99327, 99328, 99334, 99335, 99336, 99337

NUMERATOR:

Patients who have an optic nerve head evaluation during one or more office visits within 12 months

Numerator Quality-Data Coding Options for Reporting Satisfactorily:
Optic Nerve Head Evaluation Performed

Performance Met: CPT II 2027F: Optic nerve head evaluation performed

OR

Optic Nerve Head Evaluation not Performed for Medical Reasons

Append a modifier (1P) to CPT Category II code **2027F** to report documented circumstances that appropriately exclude patients from the denominator.

Medical Performance Exclusion: 2027F with 1P: Documentation of medical reason(s) for not performing an optic nerve head evaluation

OR

Optic Nerve Head Evaluation not Performed, Reason not Otherwise Specified

Append a reporting modifier (8P) to CPT Category II code **2027F** to report circumstances when the action described in the numerator is not performed and the reason is not otherwise specified.

Performance Not Met: 2027F with 8P: Optic nerve head evaluation was not performed, reason not otherwise specified

RATIONALE:

Changes in the optic nerve are one of two characteristics which currently define progression and thus worsening of glaucoma disease status (the other characteristic is visual field). There is a significant gap in documentation patterns of the optic nerve for both initial and follow-up care (Fremont, 2003), even among specialists (Lee, 2006).

Examination of the optic nerve head and retinal nerve fiber layer provides valuable structural information about glaucomatous optic nerve damage. Visible structural alterations of the optic nerve head or retinal nerve fiber layer and development of peripapillary choroidal atrophy frequently occur before visual field defects can be detected.

Careful study of the optic disc neural rim for small hemorrhages is important, since these hemorrhages can precede visual field loss and further optic nerve damage.

CLINICAL RECOMMENDATION STATEMENTS:

Ophthalmic Evaluation

In completing the elements in the comprehensive adult medical eye evaluation, the ophthalmic evaluation specifically focuses on the following elements:

- History [A:III]
- Visual acuity measurement [A:III]
- Pupil examination [B:II]
- Anterior segment examination [A:III]
- Intraocular pressure measurement [A:I]
- Gonioscopy [A:III]
- Optic nerve head and retinal nerve fiber layer examination [A:III]
- Fundus examination [A:III]

(AAO, 2010)

COPYRIGHT:

Physician Performance Measures (Measures) and related data specifications, developed by the American Medical Association (AMA)-convened Physician Consortium for Performance Improvement® (PCPI®) and the National Committee for Quality Assurance (NCQA) pursuant to government sponsorship under subcontract 6205-05-054 with Mathematica Policy Research, Inc. under contract 500-00-0033 with Centers for Medicare & Medicaid Services.

These performance Measures are not clinical guidelines and do not establish a standard of medical care, and have not been tested for all potential applications.

The Measures, while copyrighted, can be reproduced and distributed, without modification, for noncommercial purposes, eg, use by health care providers in connection with their practices. Commercial use is defined as the sale,

license, or distribution of the Measures for commercial gain, or incorporation of the Measures into a product or service that is sold, licensed or distributed for commercial gain. Commercial uses of the Measures require a license agreement between the user and the AMA, (on behalf of the PCPI) or NCQA. Neither the AMA, NCQA, PCPI nor its members shall be responsible for any use of the Measures.

THE MEASURES AND SPECIFICATIONS ARE PROVIDED “AS IS” WITHOUT WARRANTY OF ANY KIND.

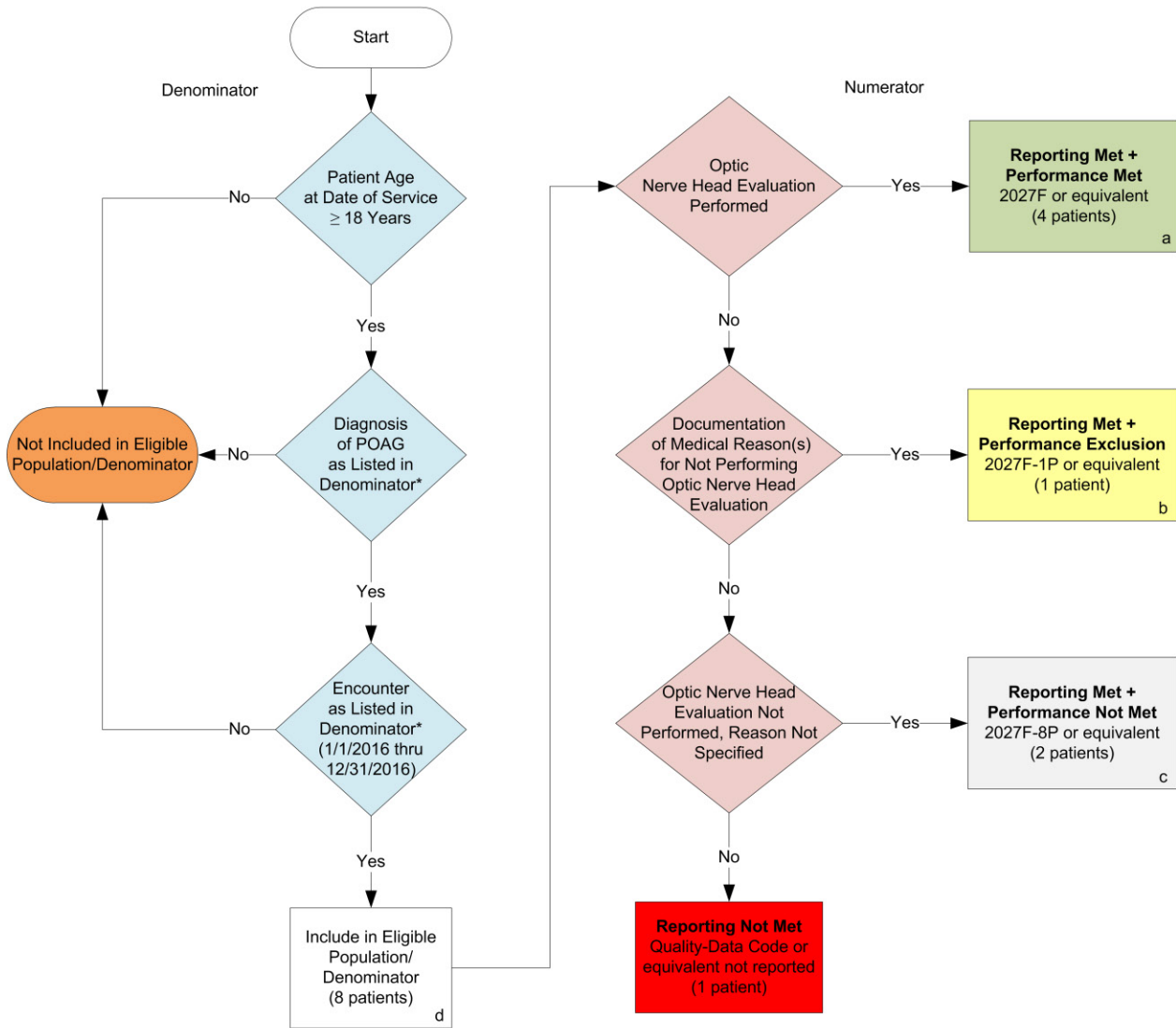
© 2004-6 American Medical Association and National Committee for Quality Assurance. All Rights Reserved.

Limited proprietary coding is contained in the Measure specifications for convenience. Users of the proprietary code sets should obtain all necessary licenses from the owners of these code sets. The AMA, NCQA, the PCPI and its members disclaim all liability for use or accuracy of any Current Procedural Terminology (CPT®) or other coding contained in the specifications.

CPT® contained in the Measures specifications is copyright 2004-2015 American Medical Association. G codes and associated descriptions included in these Measure specifications are in the public domain.

LOINC® copyright 2004-2015 Regenstrief Institute, Inc. SNOMED CLINICAL TERMS (SNOMED CT®) copyright 2004-2015 International Health Terminology Standards Development Organization. All Rights Reserved. Use of SNOMED CT® is only authorized within the United States.

2016 Claims/Registry Individual Measure Flow
PQRS #12 NQF #0086: Primary Open-Angle Glaucoma (POAG): Optic Nerve Evaluation



SAMPLE CALCULATIONS:

Reporting Rate=

$$\frac{\text{Performance Met (a=4 patients)} + \text{Performance Exclusion (b=1 patient)} + \text{Performance Not Met (c=2 patients)}}{\text{Eligible Population / Denominator (d=8 patients)}} = \frac{7 \text{ patients}}{8 \text{ patients}} = 87.50\%$$

Performance Rate=

$$\frac{\text{Performance Met (a=4 patients)}}{\text{Reporting Numerator (7 patients) - Performance Exclusion (b=1 patient)}} = \frac{4 \text{ patients}}{6 \text{ patients}} = 66.66\%$$

*See the posted Measure Specification for specific coding and instructions to report this measure.
 NOTE: Reporting Frequency – Patient-process

CPT only copyright 2015 American Medical Association. All rights reserved.
 The measure diagrams were developed by CMS as a supplemental resource to be used in conjunction with the measure specifications. They should not be used alone or as a substitution for the measure specification.

v2

2016 Claims/Registry Individual Measure Flow
PQRS #12 NQF #0086: Primary Open-Angle Glaucoma (POAG): Optic Nerve Evaluation

Please refer to the specific section of the Measure Specification to identify the denominator and numerator information for use in reporting this Individual Measure.

1. Start with Denominator
2. Check Patient Age:
 - a. If the Age is greater than or equal to 18 years of age on Date of Service and equals No during the measurement period, do not include in Eligible Patient Population. Stop Processing.
 - b. If the Age is greater than or equal to 18 years of age on Date of Service and equals Yes during the measurement period, proceed to check Patient Diagnosis.
3. Check Patient Diagnosis:
 - a. If Diagnosis of POAG as Listed in the Denominator equals No, do not include in Eligible Patient Population. Stop Processing.
 - b. If Diagnosis of POAG as Listed in the Denominator equals Yes, proceed to check Encounter Performed.
4. Check Encounter Performed:
 - a. If Encounter as Listed in the Denominator equals No, do not include in Eligible Patient Population. Stop Processing.
 - b. If Encounter as Listed in the Denominator equals Yes, include in the Eligible population.
5. Denominator Population:
 - a. Denominator population is all Eligible Patients in the denominator. Denominator is represented as Denominator in the Sample Calculation listed at the end of this document. Letter d equals 8 patients in the sample calculation.
6. Start Numerator
7. Check was Optic Nerve Head Evaluation Performed:
 - a. If Optic Nerve Head Evaluation Performed equals Yes, include in Reporting Met and Performance Met.
 - b. Reporting Met and Performance Met letter is represented in the Reporting Rate and Performance Rate in the Sample Calculation listed at the end of this document. Letter a equals 4 patients in Sample Calculation.
 - c. If Optic Nerve Head Evaluation Performed equals No, proceed to Documentation of Medical Reason(s) for Not Performing Optic Nerve Head Evaluation.
8. Check Documentation of Medical Reason(s) for Not Performing Optic Nerve Head Evaluation:
 - a. If Documentation of Medical Reason(s) for Not Performing Optic Nerve Head Evaluation equals Yes, include in Reporting Met and Performance Exclusion.

- b. Reporting Met and Performance Exclusion letter is represented in the Reporting Rate and Performance Rate in the Sample Calculation listed at the end of this document. Letter b equals 1 patient in the Sample Calculation.
 - c. If Documentation of Medical Reason(s) for Not Performing Optic Nerve Head Evaluation equals No, proceed to Optic Nerve Head Evaluation Not Performed, Reason Not Specified.
9. Check Optic Nerve Head Evaluation Not Performed, Reason Not Specified:
- a. If Optic Nerve Head Evaluation Not Performed, Reason Not Specified equals Yes, include in Reporting Met and Performance Not Met.
 - b. Reporting Met and Performance Not Met letter is represented in the Reporting Rate in the Sample Calculation listed at the end of this document. Letter c equals 2 patients in the Sample Calculation.
 - c. If Optic Nerve Head Evaluation Not Performed, Reason Not Specified equals No, proceed to Check Reporting Not Met.
10. Check Reporting Not Met:
- a. If Reporting Not Met, the Quality Data Code or equivalent was not reported. 1 patient has been subtracted from the reporting numerator in sample calculation.

SAMPLE CALCULATIONS:

Reporting Rate=

$$\frac{\text{Performance Met (a=4 patients)} + \text{Performance Exclusion (b=1 patient)} + \text{Performance Not Met (c=2 patients)}}{\text{Eligible Population / Denominator (d=8 patients)}} = \frac{7 \text{ patients}}{8 \text{ patients}} = 87.50\%$$

Performance Rate=

$$\frac{\text{Performance Met (a=4 patients)}}{\text{Reporting Numerator (7 patients) - Performance Exclusion (b=1 patient)}} = \frac{4 \text{ patients}}{6 \text{ patients}} = 66.66\%$$