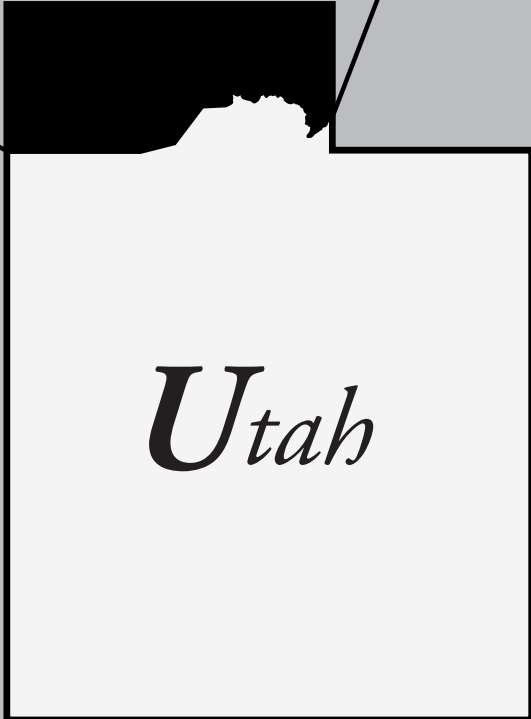
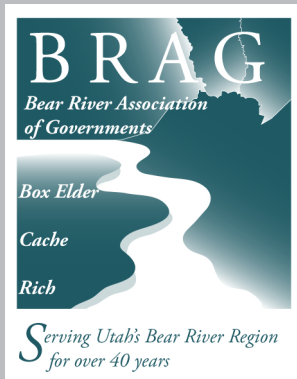
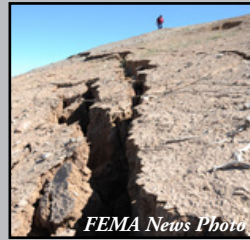


PRE-DISASTER MITIGATION PLAN

BEAR RIVER REGION, UTAH



BEAR RIVER ASSOCIATION
OF GOVERNMENTS

August 2015

TABLE OF CONTENTS

SECTION 1: PRE-REQUISITES & ADOPTION BY THE LOCAL JURISDICTIONS	1-9
Introduction & Plan Purpose	1-10
<i>How The Plan Is Organized</i>	<i>1-10</i>
<i>How The Plan Should Be Used</i>	<i>1-10</i>
<i>What Is Hazard Mitigation?</i>	<i>1-10</i>
<i>Plan Purpose</i>	<i>1-11</i>
<i>Plan Scope</i>	<i>1-12</i>
<i>Overall Goals</i>	<i>1-12</i>
<i>Local Goals</i>	<i>1-12</i>
<i>Regional Goals</i>	<i>1-12</i>
<i>Prioritization of Mitigation Strategies</i>	<i>1-13</i>
Adoption & Updating The Plan	1-13
<i>Participating Jurisdictions</i>	<i>1-13</i>
<i>Local Adoption of The Plan</i>	<i>1-13</i>
<i>Plan Updates & Changes</i>	<i>1-13</i>
Mitigation Strategies Implemented From 2009-2015	1-14
Other Changes from 2009-2015	1-15
SECTION 2: PLANNING PROCESS	2-16
Bear River Region PDM Planning Process	2-17
<i>How The Plan Was Produced and Project Staff</i>	<i>2-17</i>
<i>Meetings Summary</i>	<i>2-18</i>
<i>Planning Meetings and Public Outreach</i>	<i>2-18</i>
<i>Draft Review</i>	<i>2-19</i>
<i>Hazard Identification</i>	<i>2-19</i>
<i>Summary of Risk Assessment Methodology</i>	<i>2-20</i>
<i>Estimating Losses From Natural Hazards</i>	<i>2-21</i>
<i>Incorporation of Existing Plans, Studies, Reports, and Technical Information</i>	<i>2-22</i>
SECTION 3: REGIONAL SETTING, BACKGROUND INFORMATION, & DEMOGRAPHIC SUMMARY	3-24
Physiographic Background	3-25
<i>Climate</i>	<i>3-26</i>
<i>Geology</i>	<i>3-26</i>
<i>Environmental and Recreational Amenities</i>	<i>3-27</i>
Regional Demographic Summary	3-27

<i>Population Growth and Community Development</i>	3-27
<i>Community and Economic Development Profile.</i>	3-28
NFIP Participation & Building Code Reports	3-31
<i>National Flood Insurance Program Participation</i>	3-31
<i>Building Code Effectiveness Grading Reports (BCEGS)</i>	3-31
SECTION 4: REGIONAL RISK ASSESSMENT & MITIGATION STRATEGIES	4-32
Regional Natural Hazards	4-33
<i>Background</i>	4-33
<i>History of Regional Natural Hazards in the Bear River Region</i>	4-33
<i>Regional Natural Hazard Profiles.</i>	4-34
<i>Vulnerability and Potential Losses.</i>	4-35
<i>Implications for Future Growth and Development.</i>	4-35
<i>Regional Hazard Mitigation Strategies</i>	4-35
SECTION 5: BOX ELDER COUNTY RISK ASSESSMENT & COMMUNITY SECTIONS	5-38
<i>History and Background of Natural Hazards in Box Elder County.</i>	5-39
<i>Natural Hazard Profiles</i>	5-42
<i>Repetitive Loss Properties</i>	5-43
County-wide Natural Hazard Maps	5-43
Community Sections: Natural Hazards, Potential Losses, and Mitigation Strategies.	5-53
SECTION 6: CACHE COUNTY RISK ASSESSMENT & COMMUNITY SECTIONS	6-134
<i>History and Background of Natural Hazards in Cache County</i>	6-135
<i>Natural Hazard Profiles</i>	6-139
<i>Repetitive Loss Properties</i>	6-140
County-wide Natural Hazard Maps	6-140
Community Sections: Natural Hazards, Potential Losses, and Mitigation Strategies.	6-150
SECTION 7: RICH COUNTY RISK ASSESSMENT & COMMUNITY SECTIONS	7-247
<i>History and Background of Natural Hazards in Rich County</i>	7-248
<i>Natural Hazard Profiles</i>	7-251
<i>Repetitive Loss Properties</i>	7-251
County-wide Natural Hazard Maps	7-251
Community Sections: Natural Hazards, Potential Losses, and Mitigation Strategies.	7-260
SECTION 8: COMMUNITY CAPABILITY ASSESSMENT	8-286
Introduction	8-287
LOCAL ORGANIZATIONAL AND TECHNICAL CAPABILITY.	8-287
Policy and Program Capability	8-287

Jurisdictional capability to expand policies and programs8-289
SECTION 9 - PLAN MAINTENANCE, IMPLEMENTATION, FUNDING & PUBLIC INVOLVE-	
MENT	9-290
PLAN MAINTANENCE PROCEDURE9-291
<i>Monitoring, Evaluating and Updating the Plan.</i>	<i>9-291</i>
<i>Annual Reporting Procedures</i>	<i>9-291</i>
<i>Revisions and Updates</i>	<i>9-291</i>
<i>Five (5) Year Plan Review</i>	<i>9-291</i>
<i>Plan Amendments</i>	<i>9-291</i>
IMPLEMENTATION THROUGH EXISTING PROGRAMS9-291
<i>Integration with Local Planning</i>	<i>9-291</i>
Potential Funding Sources9-293
<i>Federal</i>	<i>9-294</i>
<i>Local</i>	<i>9-297</i>
<i>Non-Governmental</i>	<i>9-297</i>
Continued Public Involvement9-297
REFERENCES & WORKS CITED	10-298
APPENDIX A - REGIONAL DEMOGRAPHICS AND POPULATION DATA	A-301
APPENDIX B - NATURAL HAZARDS DEFINITIONS AND INFORMATION	B-307
APPENDIX C - DETAILED RISK ASSESSMENT METHODOLOGY	C-316
APPENDIX D - LOCAL MITIGATION STRATEGY SURVEY AND COMMUNITY SUMMARIES	D-321
APPENDIX E - U.S. ARMY CORPS OF ENGINEERS: FLOOD HAZARD IDENTIFICATION STUDY	E-343
FOR THE BEAR RIVER DISTRICT	
APPENDIX F - PUBLIC OUTREACH	F-365
APPENDIX G - GEOGRAPHIC INFORMATION SYSTEMS (GIS) DATA SOURCES	G-378
APPENDIX H - PLAN PROMOLGATION/LOCAL ADOPTION RESOLUTIONS	H-380
APPENDIX I - REGIONAL AND COUNTY-WIDE MEETING ATTENDANCE AND AGENDAS	I-382
APPENDIX J - 2014 UTAH GRASSHOPPER AND CRICKET INFESTATION MAP AND DATA	J-398
APPENDIX K - HISTORIC NATURAL HAZARD EVENTS	K-401
APPENDIX L - RADON RISK MAPS AND INFORMATION	L-417

LIST OF TABLES

Table 1: Participating Jurisdictions in the Bear River Region	1-12
Table 2: 2015 PDMP Meetings	2-16
Table 3: Natural Hazards in the Bear River Region	2-18
Table 4: Potential Loss Categories	2-21
Table 5: NFIP Participation	3-28
Table 6: BCEGS Scores - Bear River Region.	3-30
Table 7: Drought Hazard Profile.	4-33
Table 8: Agricultural Hazard Profile.	4-33
Table 9: Severe Weather.	4-33
Table 10: Radon Hazard Profile	4-33
Table 11: Problematic Soils Hazard Profile	4-33
Table 12: Box Elder County Flood Hazard Profile	5-41
Table 13: Box Elder County Wildfire Hazard Profile	5-42
Table 14: Box Elder County Landslide/Steep Slopes Hazard Profile	5-42
Table 15: Box Elder County Earthquake Hazard Profile	5-42
Table 16: Box Elder County Dam Failure Hazard Profile.	5-42
Table 17: Bear River Potential Loss Figures	5-52
Table 18: Bear River City Mitigation Strategies	5-55
Table 19: Box Elder County Potential Loss Tables	5-57
Table 20: Box Elder County Mitigation Strategies	5-60
Table 21: Brigham City Potential Loss Figures	5-62
Table 22: Brigham City Mitigation Strategies.	5-65
Table 23: Corinne Potential Loss Figures	5-67
Table 24: Corinne Mitigation Strategies.	5-70
Table 25: Deweyville Potential Loss Figures.	5-71
Table 26: Elwood Town Potential Loss Figures	5-75
Table 27: Elwood Town Mitigation Strategies.	5-78
Table 28: Fielding Potential Loss Figures	5-80
Table 29: Garland City Potential Loss Figures	5-84

Table 30: Garland City Mitigation Strategies	5-87
Table 31: Honeyville Potential Loss Figures.	5-89
Table 32: Honeyville Mitigation Strategies	5-92
Table 33: Howell Town Potential Loss Figures	5-94
Table 34: Howell Mitigation Strategies	5-97
Table 35: Mantua Potential Loss Figures	5-99
Table 36: Mantua Town Mitigation Strategies.	5-102
Table 37: Perry City Potential Loss Figures	5-104
Table 38: Perry City Mitigation Strategies.	5-107
Table 39: Plymouth Potential Loss Figures	5-109
Table 40: Plymouth Town Mitigation Strategies	5-112
Table 41: Portage Potential Loss Figures.	5-114
Table 42: Portage Town Mitigation Strategies	5-117
Table 43: Snowville Town Potential Loss Figures	5-119
Table 44: Snowville Town Mitigation Strategies.	5-121
Table 45: Tremonton Potential Loss Figures.	5-123
Table 46: Tremonton City Mitigation Strategies	5-126
Table 47: Willard City Potential Loss Figures	5-128
Table 48: Willard City Mitigation Strategies	5-131
Table 49: Cache County Flood Hazard Profile	6-138
Table 50: Cache County Wildfire Hazard Profile	6-138
Table 51: Cache County Landslide/Steep Slopes Hazard Profile	6-138
Table 52: Cache County Earthquake Hazard Profile	6-139
Table 53: Cache County Dam Failure Hazard Profile.	6-139
Table 54: Amalga Potential Loss Figures.	6-149
Table 55: Cache County Potential Loss Figures	6-152
Table 56: Cache County Mitigation Strategies	6-155
Table 57: Clarkston Potential Loss Figures	6-157
Table 58: Clarkston Mitigation Strategies	6-160
Table 59: Cornish Potential Loss Figures	6-162
Table 60: Cornish Mitigation Strategies	6-165

Table 61: Hyde Park Potential Loss Figures6-167

Table 62: Hyde Park Mitigation Strategies6-170

Table 63: Hyrum City Potential Loss Figures6-172

Table 64: Hyrum City Mitigation Strategies.6-175

Table 65: Lewiston Potential Loss Figures.6-177

Table 66: Lewiston Mitigation Strategies6-180

Table 67: Logan City Potential Loss Figures.6-182

Table 68: Logan City Mitigation Strategies6-185

Table 69: Mendon Potential Loss Figures6-187

Table 70: Mendon City Mitigation Strategies6-190

Table 71: Millville City Potential Losses.6-192

Table 72: Millville Town Mitigation Strategies6-195

Table 73: Newton Potential Loss Figures6-197

Table 74: Newton Mitigation Strategies6-200

Table 75: Nibley Potential Loss Figures6-202

Table 76: Nibley City Mitigation Strategies6-205

Table 77: North Logan Potential Loss Figures.6-207

Table 78: North Logan Mitigation Strategies6-210

Table 79: Paradise Town Potential Loss Figures6-212

Table 80: Paradise Town Mitigation Strategies6-215

Table 81: Providence Potential Loss Figures.6-217

Table 82: Providence Mitigation Strategies6-220

Table 83: Richmond City Potential Loss Figures6-222

Table 84: Richmond City Mitigation Strategies.6-225

Table 85: River Heights Potential Loss Figures6-227

Table 86: River Heights Mitigation Strategies.6-230

Table 87: Smithfield Potential Loss Figures6-232

Table 88: Smithfield City Mitigation Strategies6-235

Table 89: Trenton Town Potential Loss Figures6-237

Table 90: Trenton Town Mitigation Strategies.6-240

Table 91: Wellsville City Potential Loss Figures6-242

Table 92: Wellsville Town Mitigation Strategies6-244
Table 93: Rich County Flood Hazard Profile7-250
Table 94: Rich County Wildfire Hazard Profile7-250
Table 95: Rich County Landslide/Steep Slopes Hazard Profile7-250
Table 96: Rich County Earthquake Hazard Profile7-250
Table 97: Rich County Dam Failure Hazard Profile7-250
Table 98: Rich County Potential Loss Figures.7-259
Table 99: Rich County Mitigation Strategies7-262
Table 100: Garden City Potential Loss Figures7-264
Table 101: Garden City Mitigation Strategies7-267
Table 102: Laketown Potential Loss Figures.7-269
Table 103: Laketown Mitigation Strategies7-272
Table 104: Randolph Potential Loss Figures7-274
Table 105: Randolph Town Mitigation Strategies7-278
Table 106: Woodruff Town Potential Loss Figures7-280
Table 107: Woodruff Town Mitigation Strategies7-283
Table 108: State and Regional Hazard Mitigation Resources.8-286
Table 109: Local Community Capability8-286