

ENGINEERING SUPPLY COMPANY

PRECISION POSITIONING SOLUTIONS SINCE 1985

Volume 17

ESC

January 1, 2017



BIM SOLUTIONS • LASER SCANNERS • IMAGING & ROBOTIC TOTAL STATIONS • CONVENTIONAL TOTAL STATIONS
GRADE, FLAT AND INTERIOR LASERS • THEODOLITES • DIGITAL & AUTO LEVELS • FIELD CONTROLLERS
SURVEYING SOFTWARE • GEODETIC & GIS GPS RECEIVERS • GPS NETWORK SOLUTIONS • ACCESSORIES
FIELD SUPPLIES • RADIOS • ADVANCED REPAIR SERVICES • FIELD TRAINING AND SUPPORT

Call Toll Free: 1-800-788-3307

www.escsurvey.com

New! Hybrid Positioning Technology

Topcon's unique Hybrid Positioning solution combines GNSS, optical, and automated data workflow to offer the ultimate in flexible, non-stop productivity. With the precision and tracking of Topcon's robotic optical instruments, you'll realize precise measurements anywhere the prism can be seen. Then switch to GNSS positioning on the RTK rover pole when the robot is not in line of site. Finally, add a Tesla handheld controller and MAGNET software for the perfect balance between large screen viewing and an all-day productivity. Even better, Topcon's MAGNET Enterprise and Hybrid Positioning provide real-time data flow and exchange with your office.

TOPCON

INTRODUCING

THE ELITE SURVEY SUITE

topconpositioning.com/elite

- HIPER HR** ADVANCED CONNECTIVITY
- FC-5000** COMPACT POWER
- MAGNET 4** ALL ACCESS
- GT SERIES** SUPERSONIC SPEED

MULTIPLE TECHNOLOGIES, ONE POWERFUL SOLUTION
 Our new combination of products and services make your jobs faster, easier, and more profitable. Get the industry-leading solutions that can take your surveying to ELITE levels.

“TOP-NET” LIVE

California's Largest High Accuracy Real Time “RTK” GNSS Reference Station Network. All operational and future reference stations are broadcasting GPS and Glonass corrections. TOP-NET Reference Station Map As Of December 1, 2015



Topcon's New Lineup Of GNSS Receivers Offer Performance and Features Unmatched In The Industry!



TABLE OF CONTENTS

Our Low Prices Will Earn Your Business, The Great Customer Service Will Keep It!



To Order, Call Toll Free: 1-800-788-3307

New Products page

DS Series Robotics	
DS-I Series Live Video Robotics.....	
Tesla Tablet Style data Collector	
FC-500 Hi-Resolution Data Collector	
Hiper SR Series GPS Systems	
IS-3 Imaging Station	6
PS Power Station Robotics	7
MS Series High Precision Robotic Total Stations.....	8
OS and ES Series Total Stations.....	9
GR-5 and Hiper V GNSS GPS Systems	10
MAGNET 2 Field and Office Solutions Software.....	17

Issue Date: January 1, 2017

Prices in this catalog are subject to change without notice!

Printing Errors within this catalog are subject to correction.



LN-100 3D Layout Navigator One-touch ease-of-use layout tool!

- Layout and Topo measurement with extremely simple operation
- Simple instrument set up with Automatic leveling
- Android Terminal as controller
- One-person layout by Automatic Target Tracking
- Compact and Light weight design
- TSshield™, Advanced Security and Maintenance

General Index4-5

Surveying Systems

GPS Systems.....	10-13
IS Imaging Stations.....	6
Robotic Total Stations	7
Standard Total Stations	9
Data Collectors	16-19
Digital and Optical Levels	23
Equipment Rentals	43
Equipment Servicing	42
Laser Scanners	6

Surveying Accessories

Motorola Radios	28
Prisms	24-25
Rods, Prism Pole & Access	26-27
Tripods	24
Chains and Measuring Tapes	31
Magnetic Locators	29

Builders Instruments

Electronic and Optical Transits.....	22
Laser Levels	22
Builders Auto Levels	23
Pocket Lasers	23
Disto Hand Held Distance Meters.	25

Field Supplies

Marking Paint and Accessories	38
Marking Pens, Pencils, Keel.....	39
Stakes	37
Hand Tools.....	33
Safety Equipment	36
Survey Marker Order Forms	44-45

MAGNET CLOUD BASED SOLUTION FOR PRECISE POSITIONING

A family of software solutions that streamlines the workflow for surveyors, contractors, engineers and mapping professionals
See page 11



- VOLUME 17 PRICE GUIDE INDEX -

Precision Positioning Systems For Land Surveyors And General Contractors

■ A			■ D			■ I, J, K		
Abney Hand Level	30		Data Collectors	16-19		Imaging Total Stations	6	
Adapters, Tribrach	25		Data Modem For RTK Network	14		Instruments, Builders	22-23	
Adapters, Tripod	24		Day-Saver Battery System	7		Instruments, Cases	Special Order "Call"	
Aerial Flagging	38		Detector "Laser Sensor"	22		Instruments, Lasers	22	
Aerial Targets	38		Diagonal Eyepieces	7-9		Instruments, Service-Repairs	42	
Aerovoe Marking Paint	38		Digging Bar	33		Instruments, Total Stations	6-9	
Altimeters	30		Digital Roller "Measuring Wheel"	32		Interior Lasers	22	
Antenna, Radios "Handheld"	28		Digital Levels	23		Iron Pipe	37	
Antenna, GPS	14		Direct Elevation Rods	26		Jumbo Folding Rulers	31	
Antenna Mast For GPS Radio	15		Distance Meter "Hand"	25		Keil, "Lumber Crayons"	39	
Architects Pocket Scales	34		Door Mount, GPS	14		Knee Pads	36	
ATV Mount, GPS	14		Down-Load Cables	16-19		Kuker Rankin Hand Levels	30	
Automatic Levels	23		Down-Load Software	17, 19				
Axes	33		Drill, Star	33				
■ B			■ E			■ L		
Back Pack, Total Station	9		Ear Plugs	36		Laser Scanners	6	
Bags, Stake and Lath	37		Electronic Total Stations	6-9, 22		Laser Levels	22	
Barometers	30		Electronic Transits	22		Laser Receivers	22	
Barricade Tape "Caution"	36		Engineer's Pocket Scales	34		Laser Tribrach	25	
Batteries for Total Stations "Day-Saver"	7		Engineer's Steel Tapes	31		Lazer Zone Millimeter GPS	"Call"	
Batteries for Total Stations	7 "Call"		Ephemeris	Discontinued		Lath, Stakes	37	
Batteries for Radios "Handheld"	28		Equipment Rentals	43		Lath Holder	37	
Batteries, Alkaline	41		Equipment Repairs	42		Lead/holders	39	
Belt, Tool	33					Lead Wire	40	
Binders/Field Books	35		■ F			Leather Pouches	33	
Brass Survey Monuments	40		FC-25 Data Collector	16		Lenker Rods "LaserLine"	26	
Brass Survey Tags	40		FC-236 Data Collector	16		Level, Hand	30	
Brunton Compasses	30		FC-250 Data Collector	16		Level Rods	26	
Brush Axe	33		FC-2600 Data Collector	16		Levels, Abney	30	
Builders Instruments	22-23		Felt Tip Markers	39		Levels, "Automatic"	23	
Builders Rods	26		Fiberglass Leveling Rods	26		Levels, Contractor's	23	
Bush Hook	33		Fiberglass Measuring Tapes	31		Levels, "Digital"	23	
■ C			Field Bag, "Leather Pouch"	33		Locators, Magnetic	29	
Cable and Pipe Locators	29		Field Bag, "Stake & Lath"	37		LTI TruPulse Range Finders	12	
Cables for Instruments	16-19		Field Books and Accessories	35		Lufkin, Tapes and Rulers	31	
Calculator	41		Field Vests	36		Lumber Crayons (Keil)	39	
Cap, Safety (Hard Hat)	36		First Aid Kits	36				
Case, Instruments	{ Special Order, Call }		Flagging Tape	38		■ M, N, O		
Chain, Surveyors	31		Flags, Wire Marking	38		Machetes	33	
Chaining Pins	31		Flite Markers	38		Machete and Knife Sharpener	33	
Chargers for Total Stations	7-8		Folding Rulers	31		Mag/PK-Nails	40	
Chargers for Radios	28		ForeSite Software "TDS"	19		Magnet Software	17	
Chargers for Lasers	Call		■ G			Magnetic Locators	29	
Chasers, Stake	37		Gad	33		Magnifiers	34	
Chisel, Concrete	33		Gammon Reels	32		Manhole Puller	33	
Clamp Handles (Chain)	31		Ginnies, Round	37		Manuals, Total Station	Call	
Clinometers	30		Glasses, Safety	36		Map Measures	34	
Clipboards	34		Goggles, Safety	36		Markers, Felt Tip	39	
Closed Reel Tapes	31		GRS-1	11, 12		Markers, Nail	40	
Compasses, Brunton, Silva, Suunto	30		GPS Receivers/Systems/Accessories	10-15		Markers, Wood	37	
ConcreteCalc Calculator	41		■ H			Marking Accessories, Tags	40	
Concrete Scribe	33		Hammers, Sledge	33		Marking Flags	38	
Cone, Traffic	36		Hand Axe	33		Marking Paint	38	
Construction Master Calculators	41		Hand Distance Meters	25		Marking Paint Accessories	38	
Contractors Instruments	22		Hand Levels	30		Markers, Survey	40	
Copperweld Markers	"Call"		Hand Tools	33		Marking R. R. Spikes	N/A	
Counters, Tally	30		Handle, Tension	31		Measuring Tapes	31	
Crayons, Lumber	39		Hard hats	36		Measuring Wheels	32	
			Hatchets	33		Mechanical Pencils	34	
			Highway Safety Equipment	36		Metal Locators	29	
			Hiper Systems (GPS)	10		Monuments	40	
			Holder, Lumber Crayons	39		Mound City, Fiberglass Rods	26	
			Holder, Negro Lead	39		Nail Markers	40	
			Hubs	37		Nails	40	
						Nomad Data Collector	18	
						Optical Plummet Tribrachs	25	
						Optical Plummet Adjuster	25	

- VOLUME 17 PRICE GUIDE INDEX -*Our Low Prices Will Earn Your Business, The Great Customer Service Will Keep It!***■ P, Q**

PK/Mag Nails.....	40
Paddle Sign, Stop/Slow.....	36
Paint, Marking.....	38
Paper, Field.....	35
Paper Targets.....	32
Philadelphia Rods.....	26
Planimeters.....	"Call"
Plastic Pipe Plugs.....	38
Plastic Rebar Caps.....	38
Peanut "Mini" Prisms.....	24
Pencils, Mechanical.....	34
Pens, Marking.....	39
Pick.....	33
Pipe Line Locators.....	29
Pipe Plugs.....	38
Plumb Bobs (Caps Points String).....	32
Plumb Bob Scabbards.....	32
Plumb Bob Targets.....	32
Pocket Rods.....	26/31
Pocket Magnifiers/Pocket Scales.....	31
Pocket Tapes.....	31
Pocket Thermometers.....	30
Poles, Range.....	27
Pouches, Leather.....	33
Prismless Total Station.....	6-9, 22
Prisms.....	24-25
Prism Bags.....	25
Prism Poles.....	26-27
Prism Pole Accessories.....	26-27
Prism, Peanut.....	24
Prism, Retro "Stick-On".....	25
Peanut "Mini" Prism.....	24
Pipe Locator.....	29
Pocket Dimension Masters.....	25
Prism, Strobe.....	24
Prism, Targets.....	24

■ R

Radios, Motorola.....	28
Railroad Spikes.....	N/A
Range finders "Dimension Master".....	25
Range Poles.....	27
Ranger Data Collector.....	18
Recon Data Collector.....	18
Rebar.....	37
Reels, Chains.....	29
Reflectorless Total Stations.....	6-9, 22
Rentals.....	43
Repairs, Instruments.....	42
Retro "Stick-On" Prisms.....	25
Ribbon, Flagging.....	38
Right Angle Prisms.....	30
Rite-In Rain Field Books.....	35
Robotics, Total Stations.....	6-8
Rods.....	26
Rod Level.....	26
Rod, Direct Elevation.....	26
Rod, Fiberglass.....	26
Rod, Philadelphia.....	26
Rod, Pocket.....	26
Rolatape Measuring Wheels.....	32
Rotating Laser.....	22
Rules, Folding.....	31

■ S

Safety Equipment.....	36
Scales, Engineers-Architects.....	34
Scabbards, Plumb Bob.....	32
Schonstedt Magnetic Locators.....	29
Scribe, Concrete.....	33
Servicing, Instrument.....	42
Sheaths, Plumb Bob Scabbard.....	32
Shiners, Surveyors.....	40
Shovels.....	33
Sighting Targets.....	28
Signs, Safety.....	36
Sledge Hammers.....	33
Snake Bite Kits.....	36
Software, Data Collection "TDS".....	18-19
Software, Surveying "TDS".....	19
Software, "MAGNET".....	17
Solar Filters.....	9
Spikes, Boat/Railroad.....	40
Spray Paint.....	38
Stakes.....	37
Stake Bags.....	37
Stake Chasers.....	37
Stake Flags.....	38
Star Drill.....	33
Steel Stamps.....	40
Stereoscopes.....	34
Striping Paint.....	38
Survey Markers/Monuments.....	40
Surveying Compasses.....	30
Surveyors Tags.....	40
Suunto Clinometers/Compasses.....	30

■ T

Tack Ball.....	40
Tacks, Stake.....	40
Tags, Surveyors.....	40
Tally Counters.....	30
Tapes, Measuring.....	31
Targets, Plumb Bob.....	32
Targets, Laser Sensor-Receiver.....	22
Tesla Tablet Computer.....	16
TDS-Spectra All.....	18-19
TDS-Spectra Ranger.....	18
TDS-Spectra Recon.....	18
TDS-Spectra PC Software.....	19
Templates, Surveyors.....	34
Transits, Electronic.....	22
Thermometers.....	30
Tool Pouches.....	33
Tools, Hand.....	33
Topcon GPS Systems.....	10-14
Topcon Total Stations.....	6-9
TOP-NET Reference Station Network.....	2, 11
Torpedo Levels.....	33
Traffic Cones.....	36
Traffic Safety Equipment.....	36
Transit, Brunton Pocket.....	30
Tribrachs.....	25
Tribrach Adapters.....	25
Tripods.....	24
Tripod Accessories.....	24
TDS - Spctra Precision.....	18-19
Tru-Pulse Range Finder.....	12
Twine.....	39

■ U-Z

Umbrella, Surveyors.....	9, 24
Vests, Safety.....	36
Warning Signs.....	36
Weather Proof Field Books.....	35
Wheels, Measuring.....	32
Wire Stake Flags.....	38

Precision Positioning Systems For Land Surveyors And General Contractors

TOPCON GLS-2000 SERIES

A LASER SCANNER FOR ALL USERS AND MARKETS

The technology embodied in the GLS-2000 laser scanner provides the features that make it the ultimate tool for all users. The class leading specifications of the scanner make it an ideal tool for the BIM environment. Scan to Bim and 'as built' projects will benefit from the precision and productivity provided by the GLS-2000.

- Highest Accuracy with Precise Scan Technology
- High Speed 360° Dome Scanning
- Long Range
- Dual Camera
- Eye Safe - Selectable Laser Technology
- Compact, Lightweight Rugged Design

Small Size, Big Performance

The rugged, compact scanner is ideally suited for the demands of outdoor work sites. The dual cameras provide maximum flexibility whilst user selectable lasers allow scanning in any environment.

High Speed Scanning

The ultra high speed scanning of the GLS-2000 provides time saving benefits to users without compromising accuracy. The scanner will collect a full 360° scan of your work site in under 3 minutes including images.

One Touch Scanning

Scanning has never been so easy with one touch scanner operation. Utilise pre-set scanning parameters to save time and increase efficiency. On-board checking of scanned data ensures correct coverage of project.



ScanMaster3 Software

With ScanMaster's operator-friendly interface you become more proficient and productive. Manipulate data with ease and quickly deliver a product to your customer.

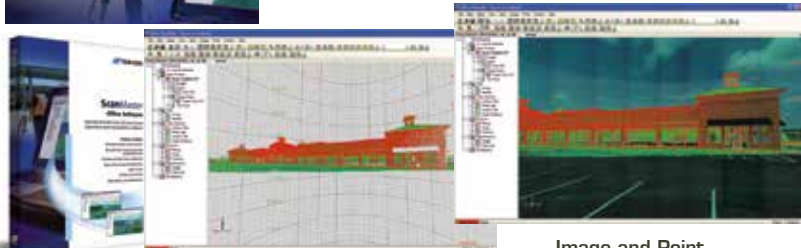


Image and Point Cloud Views

ScanMaster2 Office Software

Mass 3D Point Cloud Acquisition and Manipulation

ScanMaster has been optimized to quickly acquire and manipulate 3D point cloud data. Stream live video to setup the desired scan area and obtain the 3D point cloud data you need.

Traverse and Back Sight Capabilities

With the ability to quickly traverse and back sight, ScanMaster streamlines the process of aligning data captured from multiple occupations into a single coordinate system.

Image Capture and Live Video Feed

ScanMaster uses images to streamline data acquisition. Images can also be used to apply RGB data and texture map scanned data. In addition, ScanMaster can stream a live video feed from the GLS-1500 Scanner via WLAN to a remote PC.

Target Scans and Tie-point Registration

With the ability to precisely locate centers of retro reflective targets, ScanMaster offers a flexible and highly accurate alternative to traditional orientation techniques.

Create Mesh Objects and Annotations

ScanMaster can quickly create mesh objects. These mesh objects are triangulated surfaces that pass through a section of data points, that can be used to create cross-sections and profiles. ScanMaster can also quickly annotate desired information such as angles, and distances.

- Call Toll Free 1-800-788-3307 -

Our Low Prices Will Earn Your Business, The Great Customer Service Will Keep It!

Stock#	Description	Unit	ESC Price
■ GLS-2000 LASER SCANNER SYSTEM			
05-10-	GLS-2000S Laser Scanner Hardware,	646526111 Ea	\$39,000.00
05-10-	GLS-2000M Laser Scanner Hardware,	646526121 Ea	\$55,500.00
05-10-	GLS-2000L Laser Scanner Hardware,	646526131 Ea	\$65,000.00
05-10-0201	ScanMaster v3.0 Software Suite,	648432018 Ea	\$5,895.00
05-10-0219	ScanMaster Upgrade v1.0 To v2.0.....	648432006 Ea	\$2,000.00
05-10-02	ScanMaster Upgrade v2.0 To v3.0	648432020 Ea	\$3,495.00
■ IS IMAGING TOTAL STATION 3			
05-06-0406	IS 3 1" Imaging Total Station,.....	60663-3 Ea	Call For Current
05-06-0407	IS 3 3" Imaging Total Station,.....	60664-3 Ea	\$241.00
05-06-0606	Battery Charger, BC-30D	60700 Ea	\$241.00
05-06-0607	Battery, BT-65Q	60487 Ea	\$241.00
■ IS IMAGEMASTER SOFTWARE			
	ImageMaster IS Software (Included).....	60665 Ea	\$0.00
05-06-0411	ImageMaster Standard Software.....	60666 Ea	\$5,974.00
05-06-0412	ImageMaster Pro Software	60667 Ea	\$15,450.00

TOPCON IS-3 SERIES

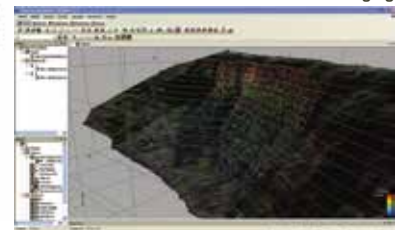
Long Range Scanning & Imaging Total Station
Topcon's New Laser Scanning Alternative From The World Leader In Digital Imaging.



Introducing Photo Fieldbook

View the exact site without returning to the field!

- A Robotic Instrument and and Much More
- Two Digital Cameras, Wide Angle, 30X Tele Zoom
- Innovative , Completely Cable-Free Design
- Intelligent Scan Feature Recognition
- Internal 2.4GHz Radio For Remote Robotics
- 6,500' (2000M) Reflectorless Range
- Remote Image Display By TopSURV
- WiFi For Remote Connection and Operation
- Scan with Live Imaging



A new way to scan

Topcon's IS combines the best of two worlds, advanced imaging and surveying, incorporating, real-time field imagery with spatial data. The IS's powerful functionality is controlled using Topcon's exclusive ImageMaster software that produces "photography with dimension", a revolutionary and cost effective alternative to laser scanning.

Imagemaster Software

ImageMaster provides image and scan control of the IS through WiFi connection providing remote operation from the comfort of your vehicle or even an offsite location. Images are gathered using two digital cameras and stream video up to 10 fps. In addition to scanned and measured points, images can be used to provide additional "fill-in" data through the power of Topcon photogrammetry. All the functionality of Topcon's PI-3000 Image Modeler Software is included in ImageMaster. This gives you the ability to model and measure horizontal and vertical distance information across the entire image, even in between scanned points!

Imaging Station Control

ImageMaster controls the data collection functionality of the Imaging Station (IS). The software allows you to define the area of interest to record both photographs and the density of point cloud collected.

Photo Field Book Display

ImageMaster provides a panoramic view of field photos. When automatically stitched together, a group of photos can make up to a 360 degree angle referenced photo fieldbook.

Survey Annotation

Once a point cloud is collected, points, lines and polygons can be drawn and annotated. Survey coding and annotations can be assigned to individual point in the point cloud.

Remote WiFi Control

Unique only to Topcon, ImageMaster can connect to the ImagingStation (IS) via WiFi. This remote connection allows full control of the IS from the comfort of a vehical or office.

IS Edition Controls the IS via WiFi connection and makes 3D TINS and photo textured surfaces of IS collected data only (No stereo pair photography).

Standard Edition ... Includes all IS edition features plus editing of IS scanned data with full survey tools such as volume and cross section calculations.

Pro Edition Includes all features plus all PI-3000 Photp Modeler software features. This is the replacement to PI-3000 software

- VOLUME 17 EQUIPMENT PRICE GUIDE -

Precision Positioning Systems For Land Surveyors And General Contractors

NEW MS AXII SERIES

Ultra-Precision Robotic Measuring Station

Topcon Positioning Systems announces the release of the all new high accuracy measuring station in North and South America. Topcon has taken the MS AX model and made it even more powerful with many notable enhancements. This makes the MS AXII the perfect instrument for monitoring, bridge construction and other engineering projects where precision is key.



Reflector Prescan* for Monitoring Setup

This function dramatically improves the initial setup efficiency for structural monitoring applications. The MS-AX models, in combination with the external control system, automatically search the predetermined area to quickly locate the approximate positions of reflectors. This function works even in low light or dark conditions where the reflectors cannot be recognized by the human eye. The approximate reflector positions obtained with this function greatly increase efficiency in reflector search for precise collimation.

Rapid 2D Monitoring

This function was specifically developed to reduce measurement time for real-time two-dimensional monitoring applications. The MS-AX models can be operated by the external control system to quickly obtain vertical and horizontal angles, enabling faster recognition of 2D (vertical and horizontal) movements. Employing advanced image processing technology, the MS-AX measures the vertical and horizontal angles to the reflectors located within the telescope's field of view. This function requires neither precise collimation to the reflector nor distance measurement, significantly increasing measurement speed. Ideal for subsidence, displacement or deformation monitoring where vertical or horizontal movements are critical.

Stock#	Description	Unit	ESC Price
■ MS AXII SERIES ULTRA-PRECISION MEASURING STATION			
05-05-0601	MS05 AX2 0.5" w/BT, Single Display.....212077102	Ea	\$ 50,362.00
05-05-0602	MS05 AX2 1.0" w/BT, Single Display.....212077112	Ea	\$ 39,547.00
■ MS AXII SERIES ACCESSORIES			
05-05-0310	PS Robotic Kit, RC-5A, TP10, ATP1, CF Pole, ... 1001234-01	Ea	\$6,123.00
05-05-0614	CDC68, Charger.....210160092	Ea	\$ 284.00
05-06-0237	Battery On-Board Li-Ion, BDC-70..... 221007000	Ea	\$309.00
05-05-0322	RS-232 Serial Interface for ES/OS/PS/MS..... 1001550-01	Ea	\$97.90
05-06-0608	12V Battery Cable CP "MS/PS/QS/IS/900A/9000A". 1230CP	Ea	\$85.00
05-06-0609	12V Battery Cable AC "MS/PS/QS/IS/900A/9000A".....1230	Ea	\$105.00
25-05-9010	TP-10 Heavy Duty Wood Tripod	Ea	\$ 303.90
05-05-0619	ATP1 360° Prism.....	Ea	\$ 1,470.90
05-06-03243	RC-5A S2 Remote Head with 1-Batt/Charger ... 10099797-02	Ea	\$4,729.00

- 0.5mm Ultra High-precision Distance Measurement
- Precise Angle Accuracies 0.5" (MS05 AXII)
- 1" Auto Pointing Accuracy measured to standard prism
- Remote Control operations through on-line PC
- Exclusive Reflector Prescan Technology
- IP65 - Enhanced Durability for Long Term Deformation/Monitoring Applications
- Integrated Bluetooth, USB2.0 and RS232 connectivity options
- Target Illumination using high-intensity LED for dark, low light jobsites
- TSshield™ standard for remote diagnostics like firmware upgrades and error code notifications
- Full Robotic connectivity with RC-5 standard

Specifications

		MS05AX	MS1AX
Distance Accuracy	Reflective sheet (Measuring Time)	0.5mm+1ppm (2.4sec)	1mm+1ppm
	Prism (Measuring Time)	0.8mm+1ppm (2.4sec)	1mm+1ppm
	Reflectorless	1mm+1ppm	2mm+1ppm
Measuring Range	With reflective sheet	200m	300m
	With AP01 prism	3,500m	3,500m
	Reflectorless	100m	400m
Angle Accuracy		0.5"	1"
Auto Pointing Accuracy	With AP01 Prism	±1mm at 200m (ISO17123-3) / 1"	
	With reflective sheet	1mm at 50m	
Auto Pointing Range		1000m	
Dust & Water Protection		IP64	
Operating Temperature		-20 - 50 degree	
Weight		7.8kg	
Target Illumination		White LED	

	OS/ES-101	OS/ES-102	OS/ES-103	OS/ES-105	ES-107
Angle Measurement					
Min Resolution/Accuracy	0.5/1"	1/2"	1/3"	1/5"	1/7"
Compensation	Dual	Dual	Dual	Dual	DUAL
Distance Measurement					
Prism EDM Range	4,000m	4,000m	4,000m	4,000m	3,000M
EDM Accuracy	2mm+2ppm	2mm+2ppm	2mm+2ppm	2mm+2ppm	2mm+2ppm
Non-Prism Range	500m	500m	500m	500m	500M
Non-Prism Accuracy	3mm+2ppm	3mm+2ppm	3mm+2ppm	3mm+2ppm	3mm+2mm
Measuring Time All	Fine: 0.9 sec	Rapid: 0.7 sec	Tracking: 0.3 sec		
Communications	Bluetooth Class 1 300m	USB Slot	RS-232C/Serial		
Battery Operation	Up To 18 Hours				
Dust/Water Protection	IP65				
Temperature Range*	-30C to +60C		*Special Artic and Desert Versions Available		

Call about Current Factory Promotions and Special Offers!

- Call Toll Free 1-800-788-3307 -

Our Low Prices Will Earn Your Business, The Great Customer Service Will Keep It!

Stock#	Description	Unit	ESC Price
■ PS SERIES ROBOTIC TOTAL STATIONS			
05-05-0301	PS101A 1" Robotic Total Station.....213067102	Ea	Call For Current Promotions!
05-05-0303	PS103A 3" Robotic Total Station.....213067112	Ea	
05-05-0305	PS105A 5" Robotic Total Station.....213067122	Ea	
05-05-0310	PS Robotic Kit, RC-5A, TP10, ATP1, CF Pole, ... 1001234-01	Ea	
05-05-0314	HiPer SR Hybrid "SEARCH-KIT" (HiPer SR L1DGPS ATP1 Adaptor Soft case)	Ea	
■ DS-200AC+ MOTORIZED ROBOTIC TOTAL STATIONS			
05-05-0326	DS-201AC/PS2 1" Motorized Total Station.....213116103	Ea	\$20,590.00
05-05-0327	DS-203AC/PS2 3" Motorized Total Station.....213116123	Ea	\$17,294.00
05-05-0330	DS-205AC/PS2 5" Motorized Total Station.....213116133	Ea	\$15,955.00
05-05-0332	DS-100/200AC Auto-Tracking Upgrade Kit.....213100900	Ea	\$1,442.00
05-05-0331	Kit, DS Series Robotic Accessory kit wo/RC5.....1003216-01	Ea	\$2,740.00
05-05-0332	RC-5/HDS Handle for DS-200 Series.....222143101	Ea	\$1,133.00
05-05-0314	HiPer SR Hybrid "SEARCH-KIT" (HiPer SR L1DGPS ATP1 Adaptor Soft case)	Ea	\$4,115.00
■ ROBOTIC ACCESSORIES, PS/DS/QS			
05-06-03243	RC-5A S2 Remote Head with 1-Batt/Charger ... 10099797-02	Ea	\$4,729.00
05-05-0310	PS Robotic Kit, RC-5A, TP10, ATP1, CF Pole, ... 1001234-01	Ea	\$6,123.00
05-06-0237	Battery On-Board Li-Ion, BDC-70.....221007000	Ea	\$300.00
05-06-0238	Battery Charger CDC68, for BD70/BDC46C210160091	Ea	\$275.00
05-06-0513	Power Cable for CDC68 Charger.....210160124	Ea	\$25.00
05-06-0237	BT-73Q External Battery, High Capacity 13Ah.....2210061A0	Ea	\$1,100.00
05-05-0322	RS-232 Serial Interface for ES/OS/PS/MS.....1001550-01	Ea	\$95.00
05-05-0691	ATP-1 360° Prism Assembly, PS/DS/SRX.....210150005	Ea	\$1,470.90
40-50-5055	Robotic Carbon Fiber Prism Pole60218	Ea	\$285.00
05-05-0621	Spacer 27mm for ATP-1-8" Robotic Rod1001141-01	Ea	\$25.00
05-06-0606	Battery Charger, BC-30D60700	Ea	\$195.00
05-06-0607	Battery, BT-65Q, 900/9000/QS/IS.....60487	Ea	\$195.00
05-06-0566	WT-100 Open Wireless Terminal.....61031	Ea	\$995.00
05-06-0606	Battery Charger, BC-30D, 900/9000/IS/QS60700	Ea	\$195.00
05-09-0217	BT-66Q Rechargeable Battery, RC-3/RC-4643746360	Ea	\$125.00
05-06-0608	12V Battery Cable CP "MS/PS/QS/IS/900A/9000A". 1230CP	Ea	\$85.00
05-06-0609	12V Battery Cable AC "MS/PS/QS/IS/900A/9000A".....1230	Ea	\$105.00
05-06-1870	Day-Saver "All Day" Battery W/Charger.....PS90	Ea	\$170.00
■ ON-SITE TRAINING			
05-09-0551	GPS/Robotics System Setup, Traing and Support 12-Months....Ea		\$750.00

The PS is a professional grade robotic total station. This new advanced design provides an onboard data collection interface, exclusive LongLink™ communication, and an incredibly powerful EDM. You can work directly on the bright, color touchscreen or with the alpha-numeric keyboard, to achieve higher levels of production with MAGNET™ Field onboard software. The PS total station can be used on a wide variety of applications. From building layout to earthwork volumes, and land surveying or control of your machines on site, the PS is the productive choice. Topcon's PS Series of robotic total stations is for the professional who is looking for a one-man solution for even the most challenging job site situation. This rugged, waterproof and dustproof total station series has the revolutionary TSshield™ advanced security and maintenance system, exclusive LongLink™ communications module, and the RC-5 integrated remote system.

PS ROBOTICS SERIES

Advanced Design With Superior Technology

- New TSshield™ Advanced Security and Maintenance
- Advanced PowerTrac™ Tracking Technology
- Fast and Powerful EDM
- Exclusive LongLink™ Communications
- Advanced Angle Accuracy
- Rugged, IP65 Waterproof and Dustproof Design

Featuring MAGNET 2 Software

See page 17



Shown with optional Tesla Controller!

DS SERIES

Compact Auto Tracking Total Station

- Xpointing fast, reliable prism acquisition technology
- Hybrid Positioning capable
- MAGNET™ Software On-board
- 1,000m reflectorless operation
- Exclusive LongLink Communications
- TSshield™, Advanced Security and Maintenance
- Rugged Water Resistant IP65 construction

World's First TSshield™ Remote Security and Notification System

Disable your instrument remotely if lost or stolen
Get notified of Firmware updates
Online instrument operational history



Shown with optional RC-5/ATP1 and Tesla Controller!

Precision Positioning Systems For Land Surveyors And General Contractors

NEW GT SERIES

The Ultimate Station

Workdays turned into workflows

Direct connectivity to both MAGNET® Enterprise and Sitelink3D global web services.

Easy collaboration from project sites to office staff and managers.

Instant file sharing with both Autodesk® AutoCAD Civil 3D and Bentley MicroStation.



The GT Series of robotic total stations is a trimmed down, high-performance solution. You get the efficiency of a single-operator robotic system, the power of long-range reflectorless measurements, and performance as a hybrid positioning solution.

Ultra-powerful

UltraSonic technology is the driving force for the GT Series. The UltraSonic motors are the thinnest, lightest, and the fastest on the market – providing you with the smoothest, fastest and most accurate prism-tracking possible. It's a difference you can see and hear immediately. With a turning speed of 180° per-second, no matter how fast you move, or how many obstacles are in the way, you cannot outrun the GT.

Ultra-accurate

Our new UltraTrac technology gives you increased prism-tracking strength in all conditions. Advanced instrument algorithms deliver the confidence you need to move ahead. It's not that you lose line-of-sight, it's how fast you can reacquire and get back to work.

Ultra-slim and reliable

Featuring a remarkably slimmed down design, the compact system is a third smaller and lighter than any Topcon robotic instrument, yet twice as fast. Without traditional gears or wearing parts, the UltraSonic motors are more rugged and durable – lasting four times longer than previous total stations, and we back it with a five-year warranty.

Stock#	Description	Unit	ESC Price
■ GT-500 SERIES ULTRA SONIC TOTAL STATIONS			
05-07-0501	GT-502 2" Robotic Total Station	1012292-19 Ea	\$22,100.00
05-07-0503	GT-503 3" Robotic Total Station	1012292-10 Ea	\$19,800.00
05-07-0505	GT-505 5" Robotic Total Station	1012292-11 Ea	\$18,500.00
■ GT-500 SERIES STATIONS "WITH RC HANDLE"			
05-07-0501	GT-502 2" Robotic Total Station	1012292-19 Ea	\$23,100.00
05-07-0503	GT-503 3" Robotic Total Station	1012292-10 Ea	\$20,800.00
05-07-0505	GT-505 5" Robotic Total Station	1012292-11 Ea	\$19,500.00
■ GT-1000 SERIES ULTRA SONIC TOTAL STATIONS			
05-07-1001	GT-1001 1" Robotic Total Station	1012292-06 Ea	\$27,700.00
05-07-1002	GT-1002 2" Robotic Total Station	1012292-18 Ea	\$25,350.00
05-07-1003	GT-1003 3" Robotic Total Station	1012292-07 Ea	\$23,000.00
05-05-0310	PS Robotic Kit, RC-5A, TP10, ATP1, CF Pole, ...	1001234-01 Ea	\$6,123.00
05-05-0314	HiPer SR Hybrid "SEARCH-KIT" (HiPer SR L1DGPS ATP1 Adaptor Soft case)	Ea	\$4,115.00
05-06-03243	RC-5A S2 Remote Head with 1-Batt/Charger ...	10099797-02 Ea	\$4,729.00

FASTEST ROBOTIC MOTOR TECHNOLOGY AVAILABLE 30% smaller and lighter

The Ultimate Total Station

- UltraSonic Direct Drive motors
- Fastest Robotic Total Station in the World!
- 30% smaller and lighter than any Topcon Robotic instrument with more functionality
 - TSshield™ global service
- Advanced UltraTrac technology
- 3-year instrument and 5-year motor warranty
- Available in two models: GT-500 and GT-1000



Versatile solution

- Hybrid Positioning™ with quick addition of HiPer SR receiver
- Compatible with RC-5 remote
- Reflectorless out to 1,000 m



RC-5A Remote Controller

- 40 hours on 1 battery
- 600 meter long link communication
- 300 meter quick lock
- IP65 Enviromental rating



- Call Toll Free 1-800-788-3307 -

Our Low Prices Will Earn Your Business, The Great Customer Service Will Keep It!

Call about Current Factory Promotions and Special Offers!

Stock#	Description	Unit	ESC Price
■ OS SERIES ON-BOARD MAGNET REFLECTORLESS TOTAL STATIONS			
05-05-0501	OS-101 1" Total Station Dual Display w/MagNet.....214061260	Ea	\$16,985.00
05-05-0502	OS-102 2" Total Station Dual Display w/MagNet.....214062260	Ea	\$14,719.00
05-05-0503	OS-103 3" Total Station Dual Display w/MagNet.....214063260	Ea	\$13,689.00
05-05-0504	OS-105 5" Total Station Dual Display w/MagNet.....214064260	Ea	\$12,350.00
■ ES SERIES REFLECTORLESS TOTAL STATIONS			
05-05-0231	ES-101 1" Reflectorless Total Station..... 2140512E0	Ea	\$13,895.00
05-05-0232	ES-102 2" Reflectorless Total Station..... 2140522E0	Ea	\$11,629.00
05-05-0233	ES-103 3" Reflectorless Total Station..... 2140532E0	Ea	\$10,599.00
05-05-0234	ES-105 5" Reflectorless Total Station..... 2140542E0	Ea	\$9,260.00
05-05-0235	ES-107 7" Reflectorless Total Station..... 2140552E0	Ea	\$8,745.00
■ ES/OS SERIES ACCESSORIES			
05-05-0511	BDC70 Detachable Lion Battery Pack221007000	Ea	\$300.00
05-05-0512	CDC68 Charger and Power Cable w/flat pin.....210160092	Ea	\$250.00
05-05-0513	EDC113B Power Cable for CDC68210160124	Ea	\$25.00
05-05-0515	EDC139 AC Adaptor 100-240v.....221213900	Ea	\$310.00
05-05-0516	EDC34 AC Power Cable210160143	Ea	\$25.00
05-05-0322	RS-232 Serial Instrument Cable for ES/OS/PS... 1001550-01	Ea	\$95.00
05-05-0517	EDC212 Y Cable for EDC139 AC Adap PC Conn ..221221200	Ea	\$675.00
05-05-0518	Car Battery Cable, Alligator clips, ES/OS221221300	Ea	\$170.00
05-05-0519	Tubular Compass, ES/OS221840700	Ea	\$55.00
05-05-0520	Diagonal Eyepiece, 30X, ES/OS210150025	Ea	\$415.00
05-05-0521	40X Magnification Eyepiece, ES/OS221928000	Ea	\$332.80
05-05-0522	Solar Filter, Flip Type, ES/OS210160164	Ea	\$210.00
05-05-0523	Adaptor-2 Plug, ES/OS643836050	Ea	\$90.00
05-05-0524	Reflective Sheet Target 230X230mm210210004	Ea	\$95.00
05-05-0525	Reflective Sheet Targets 400/Sheet 10X10mm210210006	Ea	\$95.00
05-05-0526	Reflective Sheet Targets 196/Sheet 15X15mm210210010	Ea	\$95.00
05-05-0527	Reflective Sheet Targets 100/Sheet 20X20mm210210018	Ea	\$95.00
05-05-0528	Reflective Sheet Targets 49/Sheet 30X30mm210210026	Ea	\$95.00
05-05-0529	Reflective Sheet Targets 16/Sheet 50X50mm210210035	Ea	\$95.00
05-05-0530	Reflective Sheet Targets 9/Sheet 70X70mm210210037	Ea	\$95.00
05-05-0531	Reflective Sheet Targets 4/Sheet 90X90mm210210041	Ea	\$95.00
■ MISCELLANEOUS TOTAL STATION ACCESSORIES			
05-06-1905	Total Station Back Pack "Top Load" 8121-00-ORG	Ea	\$207.95
05-06-1910	Topcon Survey Umbrella.....51900	Ea	\$114.95
05-06-1870	Day-Saver "All Day" Battery W/Charger, SLA.....PS90	Ea	\$170.00
05-06-1871	Day-Saver Light-Weight Lithium Battery W/Charger...PS140S	Ea	\$340.00
05-06-1875	Day-Saver T-32 Power Cable T-32	Ea	\$52.00
05-06-1876	Day-Saver (Replacement Cell).....Ea	Ea	\$38.93
05-06-1877	Day-Saver (A-30 Charger Only).....A-30	Ea	\$59.00
25-05-9010	TP-10 HD Wooden Tripod Topcon.....59010	Ea	\$295.00
■ ON-SITE TRAINING			
05-09-0551	GPS/Robotics System Setup, Traing and Support 12-Months....Ea	Ea	\$750.00

OS SERIES

Featuring On-Bord MAGNET Software



Exclusive LongLink™

For stakeout and other operations where being at the prism pole with a field controller is critical, Topcon's exclusive LongLink™ functionality allows you to operate a field controller more than 300m away from the instrument. LongLink™ brings you flexibility you've never had before

- Advanced Security and Maintenance with New TSshield™
- MAGNET Field On-board
- Exclusive LongLink™ Communications Functionality 300m
- Fast and Powerful EDM
- Advanced Angle Accuracy OS Series

The OS is a professional grade compact total station. This new advanced design provides an on-board data collection interface, exclusive LongLink™ communication, and an incredibly powerful EDM. Work directly on the bright, color touchscreen, or with the alpha-numeric keyboard, to achieve higher levels of production with MAGNET Field on-board software. The OS total station can be used on a wide variety of applications. From building layout to earthwork volumes, and land surveying, the OS is the productive choice.

ULTRA-POWERFUL, ADVANCED EDM

- 500m non-prism range
- 4000m prism range
- Red/Green Guidelight
- Coaxial red laser pointer
- Pinpoint, precise beamspot



EASY ACCESS USB 2.0 MEMORY

- Up to 8GB storage
- Environmentally protected
- Compatible with industry standard thumb drives



ADVANCED ANGLE ENCODER SYSTEM

- "Best in Class" 1" angle acc available
- Incorporates exclusive IACS (Independent Angle Calibration System) on 1" & 2" models
- Self calibration
- Proven High Accuracy Technology



EDM TRIGGER KEY

- Perfect touch location
- Promotes angle stability
- No torque when measuring on-board
- Water/Dust proof
- Easy for gloved hands



ES SERIES

Advanced Reflectorless Total Stations

- Advanced Security and Maintenance with New TSshield™
- Fast and Powerful EDM
- Exclusive LongLink™ Communications Functionality
- Advanced Angle Accuracy
- Super Long Battery Life - 36 Hours!
- Rugged, Waterproof Design

The new ES Series was designed from the ground up to deliver the very latest technological advantages, all in a small, sleek design - you'll appreciate the advantages from the very first measurement.

Featuring a class leading EDM unit, the ES is able to measure up to 4,000m to standard prisms, and can measure in reflectorless mode up to 500m at an incredible 3mm + 2ppm accuracy.

Measurements are captured faster than ever, and with a beam width of 15mm (over 30m), the bright red laser dot pinpoints features with ease.



- VOLUME 17 EQUIPMENT PRICE GUIDE -

Precision Positioning Systems For Land Surveyors And General Contractors

TOPCON GR-5 ADVANCED GNSS RECEIVER

The Most Advanced GPS+ Receiver System Ever Made

The new Topcon GR-5 receiver represents the next generation of advanced system design and tracking technology from Topcon, the new GR-5 incorporates the latest technological advancements with the same powerful performance our customers have grown to demand.



- G3 Tracking Technology (GPS/GLONASS/GALILEO)
- 216 Universal Tracking Channels
- Advanced Fence Antenna, Unsurpassed Tracking Performance
- High Accuracy Technology (Position updates upto 100Hz)
- Integrated Dual Communication System w/Radio and Cellular
- Bluetooth Wireless Technology
- 32GB SDHC Storage Support
- Integrated GSM/GPRS or CDMA Cellular communications
- Dual hot-swappable batteries

NEW! Hiper V Series



Introducing The Next Generation Dual Frequency GNSS Receiver

Topcon extends the reach of Vanguard Technology into the HiPer V product. With 300% increase in channel availability and Topcon's exclusive Universal Tracking technology, the HiPer V is ready to increase the productivity of your customers.

- Vanguard Technology
- 226 GNSS Universal Channels
- Rugged, Magnesium Alloy Construction
- Integrated RTK and Static Receiver
- Fence Antenna Advanced Performance
- Tracked Signals: GPS: L1 CA, L1/L2 P-code, L2C, Glonass: L1/L2 CA, L1/L2 P-CODE, SBAS: WAAS, EGNOS, MSAS

Topcon raises the standard once again by adding Vanguard Technology's 226 channels and fence antenna into a versatile, configurable receiver, HiPer V. The additional channels and precision antenna element make RTK positioning faster and more productive than any other receiver on the market.



NEW! Hiper V Static Receivers

Stock#	Description	Unit	ESC Price
■ TOPCON GR-5 10hz RTK SYSTEMS (BASE AND ROVER)			
05-08-0103	GR-5 Dual GD 915+	99-094903-07 Ea	Call For Current Promotions!
05-08-0104	GR-5 Dual GD DIG-UHF 440-470	99-094903-01 Ea	
05-08-0105	GR-5 Dual GD 915+ w/GSM	99-094903-08 Ea	
05-08-0106	GR-5 Dual GD DIG-UHF w/GSM	99-094903-02 Ea	
■ GR-5 10hz RTK ROVERS			
05-08-0153	GR-5 Rover GD 915+	99-094902-07 Ea	Call For Current Promotions!
05-08-0154	GR-5 Rover GD DIG-UHF 440-470	99-094902-01 Ea	
05-08-0155	GR-5 Rover GD DIG-UHF 440-470 Verizon	99-094902-03 Ea	
05-08-0156	GR-5 Rover GD DIG-UHF 440-470 GSM	99-094902-02 Ea	
■ GR-5 RECEIVER OAF OPTIONS (Per Receiver)			
05-08-0200	OAF, GR-5 Glonass L5 Tracking	27-090902-02 Ea	\$2,060.00
05-08-0201	OAF, GR-5 Glonass L1/L2 Tracking	27-090902-03 Ea	\$1,030.00
05-08-0202	OAF, GR-5 RTK 20Hz	27-090902-04 Ea	\$2,060.00
05-08-0203	OAF, GR-5 RTK 50Hz	27-090902-05 Ea	\$2,060.00
05-08-0204	OAF, GR-5 RTK 100Hz	27-090902-06 Ea	\$2,060.00
05-08-0205	OAF, GR-5 RTK Legacy RTK	1002791-05 Ea	\$515.00
■ GR-5 RECEIVER Accessories			
05-08-0210	Bulletproof Warranty for GR-5	EW094901-3 Ea	\$1,545.00
05-08-0085	GR-5/3 Li-Ion Battery Pack	02-850901-02 Ea	\$221.45
05-08-0078	GR-5/3 Reciever Power cable, SAE	14-008016-03 Ea	\$66.95
05-08-0090	GR-5/3 Quick Disconnect Assembly	02-850905-01 Ea	\$132.87
05-08-0092	Reciever Serial Cable DB9, GR-5/3 Hipers All... ..	14-008005-03 Ea	\$103.00
05-08-0061	USB cable, ODU-4/USB-A	14-008070-01 Ea	\$113.30
05-08-0087	Power Supply, Base unit	22-034101-01 Ea	\$156.56
05-08-0083	Power cable for Power Supply Base unit	14-008052-01 Ea	\$6.00
05-08-0077	Cigarette Power Supply to SAE Cable	14-008023-01 Ea	\$15.00
05-08-8163	2M Snap-Lock Aluminum Rod: "4-position"	SI-4648 Ea	\$129.95
05-08-8160	2M Snap-Lock Composite Rod: "4-position"	SI-4649 Ea	\$395.00
■ HIPER V SYSTEM 226-Chan 10hz DIG-UHF, Fence Antenna			
05-08-0601	Hiper V Dual System, GD 440-470	1001858-02 Sys	\$26,400.00
05-08-0602	Hiper V Dual System, GD 440-470 w/HSPA	1001858-04 Sys	\$29,900.00
05-08-0603	Hiper V Dual System, GD 440-470 w/CDMA	1001858-06 Sys	\$29,600.00
05-08-0604	Hiper V Dual System, GD 410-440	1001858-01 Sys	\$26,400.00
05-08-0605	Hiper V Dual System, GD 410-440 w/HSPA	1001858-03 Sys	\$29,900.00
05-08-0606	Hiper V Dual System, GD 410-440 w/CDMA	1001858-05 Sys	\$29,600.00
■ HIPER V BASE 226-Channel 10hz DIG-UHF, Fence Antenna			
05-08-0608	Hiper V Base System, GD 440-470	1001856-02 Bs	\$14,000.00
05-08-0609	Hiper V Base System, GD 440-470 w/HSPA	1001856-04 Bs	\$15,800.00
05-08-0610	Hiper V Base System, GD 440-470 w/CDMA	1001856-06 Bs	\$15,600.00
05-08-0611	Hiper V Base System, GD 410-440	1001856-01 Bs	\$14,000.00
05-08-0612	Hiper V Base System, GD 410-440 w/HSPA	1001856-03 Bs	\$15,800.00
05-08-0613	Hiper V Base System, GD 410-440 w/CDMA	1001856-05 Bs	\$15,600.00
■ HIPER V ROVER 226-Channel 10hz DIG-UHF, Fence Antenna			
05-08-0615	Hiper V Rover System, GD 440-470	1001857-02 Rvr	\$13,400.00
05-08-0616	Hiper V Rover System, GD 440-470 w/HSPA	1001857-04 Rvr	\$15,200.00
05-08-0617	Hiper V Rover System, GD 440-470 w/CDMA	1001857-06 Rvr	\$15,000.00
05-08-0618	Hiper V Rover System, GD 410-440	1001857-01 Rvr	\$13,400.00
05-08-0619	Hiper V Rover System, GD 410-440 w/HSPA	1001857-03 Rvr	\$15,200.00
05-08-0620	Hiper V Rover System, GD 410-440 w/CDMA	1001857-05 Rvr	\$15,000.00
■ HIPER V STATIC RECEIVER SYSTEMS			
05-08-0631	Hiper V L1 Single Receiver Kit GPS/Glonass	1001862-01 Ea	\$6,400.00
05-08-0632	Hiper V L1 Dual Reciever Kit GPS/Glonass	1001862-02 Ea	\$12,000.00
05-08-0633	Hiper V L1/L2 Single Receiver Kit GPS	1001862-03 Ea	\$8,300.00
05-08-0634	Hiper V L1/L2 Dual Reciever Kit GPS	1001862-04 Ea	\$15,800.00
■ HIPER V OAF UPGRADE OPTIONS and ACCESSORIES			
05-08-0636	OAF Hiper V Upgrade L2 GPS Option	1001866-01 Ea	\$1,590.00
05-08-0637	OAF Hiper V Upgrade L1/L2 Glonass Option	1001866-02 Ea	\$1,060.00
05-08-0638	OAF Hiper V Upgrade RTK 10Hz Option	1001866-03 Ea	\$2,650.00
05-08-0639	OAF Hiper V Upgrade RTK 20Hz Option	1001866-04 Ea	\$530.00
05-08-0646	OAF Hiper V Legacy RTK	1002791-01 Ea	\$530.00
05-08-0641	Hiper V/II Battery BDC-70	221007000 Ea	\$309.00
05-08-0642	Hiper V/II Dual Battery Charger CDC-68	210160092 Ea	\$257.50
05-08-0643	Hiper V/II Charger AC Power Cord EDC113B	210160124 Ea	\$25.75
05-08-0092	Reciever Serial Cable DB9, GR-5/3 Hipers All... ..	14-008005-03 Ea	\$103.00

Call about Current Factory Promotions and Special Offers!

- Call Toll Free 1-800-788-3307 -

Our Low Prices Will Earn Your Business, The Great Customer Service Will Keep It!

Stock#	Description	Unit	ESC Price
■ HIPER SR SITE RECEIVERS			
05-08-0651	Hiper SR, LongLINK Base & Rover, GGD 10Hz.....1000691-01	Ea	\$16,400.00
05-08-0652	Hiper SR, LongLINK Base Only GGD 10Hz.....1000692-01	Ea	\$8,200.00
05-08-0653	Hiper SR, LongLINK Rover Only GGD 10Hz.....1000693-01	Ea	\$8,400.00
05-08-0654	Hiper SR, Network "Only" Rover GGD 10Hz.....1000694-01	Ea	\$8,900.00
05-08-0655	Hiper SR, Single Static L1 GGD 1Hz.....1000696-01	Ea	\$6,100.00
■ HIPER SR, ACCESSORIES AND OPTIONS			
05-08-0571	Cable SR, Hirose 6-pin to SAE and DB9.....1000182-01	Ea	\$61.80
05-08-0572	Cable SR, Power, Charger.....14008052-01	Ea	\$6.18
05-08-0573	Soft Carry Case for Hiper SR.....20-830301-02	Ea	\$67.00
05-08-0681	OAF, L2 GGD from GD.....1000701-01	Ea	\$800.00
05-08-0682	OAF, Upgrade Hiper SR, L2 GGD 1 to 10 Hz.....1000702-01	Ea	\$1,330.00
05-08-0683	OAF, Upgrade Network rtk from Static 10 Hz.....1001022-01	Ea	\$1,860.00
05-08-0684	OAF, Upgrade Network rtk from LongLINK 10 Hz..1001023-01	Ea	\$530.00
05-08-0685	OAF, Upgrade Network/LongLINK from LongLINK 1001024-01	Ea	\$1,060.00
05-08-0686	OAF, Upgrade Add LongLINK RTK to Network.....1001079-01	Ea	\$530.00
05-08-0689	OAF, Legacy RTK.....1002791-03	Ea	\$530.00
■ TOPCON MAGNET SOFTWARE			
05-86-5011	Magnet Field Solution 12-Month License.....61065	Ea	\$768.00
05-86-5031	Office Tools.....61067	Ea	\$525.00
05-86-5032	Office Tools + Post Processing.....61068	Ea	\$2,627.00
05-86-5018	Magnet Field Basic + GPS (Purchase).....61062	Ea	\$1,576.00
For Complete pricing On MAGNET Field & Office Software see page 17			
■ NETWORK AIRTIME USAGE: "PR - PER ROVER"			
05-86-5024	Field Product maintenance 12-Month License.....61155	Ea	\$300.00
05-09-0500	Initial Licensing "Setup" Fee.....	PR	\$250.00
05-09-0501	Monthly Network Airtime.....	PR	\$150.00
05-09-0500	Annual Network Airtime "Prepaid".....	PR	\$1,500.00
05-09-0502	Daily Usage (24-Hours).....	PR	\$40.00
Users are responsible for their cell phone/modem wireless fees.			
Rental Topcon Network Rover (With Controller).....			Daily \$295.00
05-08-0684	OAF, Upgrade Network rtk from LongLINK 10 Hz..1001023-01	Ea	\$530.00
05-08-0685	OAF, Upgrade Network/LongLINK from LongLINK 1001024-01	Ea	\$1,060.00
05-08-0686	OAF, Upgrade Add LongLINK RTK to Network.....1001079-01	Ea	\$530.00
05-08-0687	OAF, Upgrade LongLINK RTK, 10 to 20 Hz.....1001081-01	Ea	\$320.00
05-08-0688	OAF, Upgrade network RTK, 10 to 20 Hz.....1001080-01	Ea	\$320.00
■ ON-SITE TRAINING			
05-09-0551	GPS/Robotics System Setup, Traing and Support 12-Months....	Ea	\$750.00
■ TOPCON REFERENCE STATIONS			
05-08-0425	NET-G3A Receiver w/Standard Options.....	99-064701-01 Ea	\$18,995.00

NEW! Hiper SR Series

Introducing The Next Generation Dual Frequency GNSS Receiver



HYBRID POSITIONING

Topcon's Hybrid Positioning leverages GNSS and optical positioning data for increased production and field efficiency. Utilizing Topcon's revolutionary GNSS signal processing, advanced Robotic tracking and powerful EDM performance plus Topcon's MAGNET Field software, Topcon provides seamless productivity in the most demanding conditions. Migrate easily between robotic line-of-sight measurements and GNSS when line-of-sight is disrupted. And you can do it all while reducing traversing and multiple tripod setups.



Precision Positioning Systems For Land Surveyors And General Contractors

HIPER SR GIS MAPPING SOLUTION

ONE DEVICE, ANY ACCURACY

Submeter, Decimeter or Centimeter Accuracy

- Mobile Multi-use GIS Field Mapping Solution
- 806Mhz XScale Process
- Optional GSM or CDMA Internal Cell Modem
- Integrated 2.0 Megapixel Camera
- 256MB SDRAM, 1GB Flash Memory
- Built-in Bluetooth and Wireless LAN
- Internal Magnetic Compass
- 72 channel GNSS (GPS+Glonass) Receiver
- Windows Mobile 6.1 Operating System

Topcon is pleased to announce the new GRS-1 addressing all GIS accuracy project needs including high accuracy measurements in fields such as utility infrastructure, underground electric and gas, water/wastewater, asset management, and land records management. With the GRS-1 users do not have to give up the luxury of a small lightweight solution in order to obtain high accuracy GIS measurements. With the internal GRS-1 antenna real-time DGPS data can be acquired for submeter work. With an external L1 PG-A5 antenna achieve subfoot results. Pair an external L1/L2 PG-A1 antenna for instantaneous "GIS-RTK" (<5cm) level positions. The GRS-1 incorporates a GSM or CDMA internal cellular modem which can be used to easily connect to a local reference station network for real-time measurements. With the modular GRS-1 getting submeter or high accuracy GIS measurements in real-time and navigating back to those locations is a cinch.



Stock#	Description	Unit	ESC Price
■ TOPCON FC-500 ADVANCED WINDOWS MOBILE SYSTEM			
05-86-3117	FC-500 Standard, Wifi/Bletooth.....	1003045-01 Ea	\$1,700.00
05-86-3119	FC-500 GEO, Wifi/Bletooth/GPS/Camera.....	1003045-03 Ea	\$2,055.00
05-86-3121	FC-500 GEO/3G, Wifi/Bletooth/GPS/Camera.....	1003045-05 Ea	\$2,524.00
05-86-3333	AC Wall Charger.....	1003781-01 Ea	\$75.00
05-86-3135	FC-500 Vehical Charger Cable.....	61116 Ea	\$15.00
05-86-3137	Battery Pack, Lion.....	1003778-01 Ea	\$125.00
05-86-3139	Download Cable (Micro Client).....	1003787-01 Ea	\$20.00
05-96-3141	Instrument Cable, Serial/Com.....	1003790-01 Ea	\$20.00
05-86-3303	FC-200/250/500 Pole Bracket Complete.....	60513 Ea	\$135.00
05-86-3142	FC-500 Screen Protector, 2-pk.....	Ea	\$12.10
■ MAGNET FIELD FOR MAPPING AND GIS			
05-86-4931	Magnet Field GIS Basic.....	61055 Ea	\$350.00
05-86-4932	Magnet Field GIS Advanced.....	1000257-01 Ea	\$750.00
05-86-4933	Magnet Field GIS Solution 12-Months.....	1000258-01 Ea	\$480.00
05-86-4935	Trade up, Field GIS Solution fr TopSurv 12-Months.....	1000259-01 Ea	\$300.00

Call about Current Factory Promotions and Special Offers!

The **FC-500** has a built in 5MP camera with autofocus and geotagging capability for embossed time, date and GPS position. It is a rugged device that works with all Topcon receivers in any application in any weather condition. An optional 3.5G cellular modem allows field personnel to connect to the office via MAGNET® Enterprise to quickly transfer data to and from the MAGNET cloud. Easily communicate with field personnel when projects need to be changed or upload and download files for faster project completion and decision making capabilities. Bluetooth® and Wi-Fi come standard, with no need for expensive upgrades. Use your device in any "hotspot" location to surf the web, check weather, email, send to and receive files from the office, etc. The FC-500 also includes an internal GPS receiver for 2-5m data collection or navigation, or to show your position on background Bing™ Maps in MAGNET Field GIS software.

FC-500 FEATURES

- Sunlight-readable display – 4.3 inch
- Easily rotate from portrait to landscape
- Mil-Std 810G and IP68 certified
- 1GHz processor
- 5 megapixel camera
- 512Mb RAM, 8GB flash storage
- 3.5G cellular module (option)
- Internal GPS 2-5m accuracy
- Built-in wireless Bluetooth® and Wi-Fi connectivity
- Windows® 6.5 embedded operating system
- USB Host (Full A) USB Client (Micro)
- 6 control buttons, with 4-way directional arrow key
- 9-pin serial port
- Rechargeable and hot-swappable batteries

- Call Toll Free 1-800-788-3307 -

Our Low Prices Will Earn Your Business, The Great Customer Service Will Keep It!

Stock#	Description	Unit	ESC Price
■ TESLA SCALABLE GIS UNIT			
05-08-5031	Tesla Sub-Meter SBAS Network DGPS Bundle.....1001478-01	Ea	\$7,100.00
05-08-5032	Tesla Sub-Decimeter Network RTK Bundle1001479-01	Ea	\$7,995.00
05-08-5033	Tesla Centimeter Network RTK Bundle.....1001480-01	Ea	\$12,995.00
05-08-5052	Tesla Rover, Main Unit Only1001256-01	Ea	\$6,290.00
05-08-5056	OAF Option File Centimeter GGD 10Hz RTK1001211-01	Ea	\$2,920.00
05-08-0711	OAF Option File Sub-Decimeter 5/81001212-01	Ea	\$1,720.00
05-08-0712	OAF Option File Sub-Meter 10/50.....1001213-01	Ea	\$660.00
05-08-5054	PG-S1 GPS L1/L2 Antenna.....01-104301-01	Ea	\$2,195.00
05-08-5055	PL-S1 GPS L1 Antenna.....01-104301-02	Ea	\$1,395.00
05-09-0219	Antenna Cable for Tesla RTK/GRS-114-008158-02	Ea	\$164.95
05-08-8163	2M Snap-Lock Aluminum Rod: "4-position"SI-4648	Ea	\$129.95
05-86-5056	Tesla 4-Screw Pole Mount Bracket1000183-01	Ea	\$195.00
05-08-5053	Retro Fit RTK Pack1001163-01	Ea	\$2,595.00
05-86-5011	Magnet Field Basic.....61056	Ea	\$500.00

■ TRUPULSE LASER RANGEFINDERS			
05-08-9071	TruPulse 360B Laser Rangefinder w/Bluetooth7005530	Ea	\$1,695.00
05-08-9072	TruPulse 200 Laser Rangefinder wo/Bluetooth.....7005025	Ea	\$749.00

TOPCON eGIS

ADVANCED FIELD SOFTWARE FOR MAPPING

With an ever-increasing reliance on location based information, organizations are turning to mobile GIS solutions, and Topcon is ready to provide you the best software solution available with our eGIS mapping software.



For applications such as utilities, disaster management, water and sewage plant operations, forestry, highway maintenance, or asset management, eGIS is all you need to capture data at any GNSS level, whether autonomous, DGPS, or centimeter RTK level. Running on the Topcon Tesla, GRS-1, FC-25A or FC-236 controllers, this Windows Mobile based software solution has been designed from the ground up to be as easy and intuitive to use as possible.

CHOOSE THE WAY YOU WORK

With a customizable interface to suit the way that you and your teams work, eGIS has been developed to allow you to concentrate on collecting the data as quickly and smoothly as possible... no programming skills or additional software needed!

IMPROVE GIS DATA COLLECTION PRODUCTIVITY WITH eGIS, eGPS AND eVIEWER!

Create an efficient workflow using eGIS with eGIS Sync and eViewer Desktop software.

eGPS

eGPS is a GPS controller utility that will control all aspects of the GPS and then export a NMEA protocol to third-party field applications. The eGPS utility will allow full accuracy capabilities of Topcon GIS devices to flow easily into third-party field applications that would otherwise be unable to obtain high accuracies.

eVIEWER

Collected data can be reviewed with eViewer after downloading from the field. eViewer utilizes Google Map, Bing Maps, and Map Point for background layers. There is even an export to Google Earth.

FEATURES:

- Fully integrate GNSS functions using Topcon mobile mapping handheld devices
- Capture, edit, analyze, and display geographic information
- Compatible with ArcPad vector/raster map display
- Quality Control of real-time GNSS derived positioning
- Professional camera integration
- eGISync automatically carries out data transfer
- eViewer desktop companion software

See for Yourself How the TruPulse 360 is Changing Fieldwork Forever.
A low-cost professional laser rangefinder with an integrated compass, inclinometer and data output

TOPCON TESLA SCALABLE GIS UNIT

The Tesla GIS model is a scalable hardware platform available with 2-5 meter, sub-meter, decimeter and centimeter level accuracy. Accuracies better than 2-5m are available by a simple upgrade and an added external antenna. The Topcon Tesla has the benefits of a larger handheld screen without the heavy burden of a Tablet PC.



TESLA FEATURES

- Integrated 72 Channel GNSS receiver
- Large 5.7" VGA color touchscreen
- Fast 806MHz processor, 256MB RAM, 4GB flash storage
- 3.2MP camera
- 3.5G cellular module
- Internal GPS 2-5m accuracy
- Built-in wireless Bluetooth® and WiFi connectivity

INTEGRATED 72 CHANNEL GNSS RECEIVER

The power of a built-in geodetic grade GNSS receiver makes the Topcon Tesla scalable GIS unit the ideal mapping solution for any accuracy. The pole system with a PL-S1 antenna mounted at the top is perfectly balanced and light weight, making it the perfect mapping system.



Range: 0 to 3280'



TruPulse 360 with Bluetooth wireless technology.

LAYER 1 TECHNOLOGY
Authorized Dealer



TruPulse 360 with Bluetooth wireless technology.



TOPCON GIS High Accuracy Kit Includes:

2M Rod, PG-A5 Antenna, Cable and Pole Bracket.



- VOLUME 17 EQUIPMENT PRICE GUIDE -

Precision Positioning Systems For Land Surveyors And General Contractors



GPS Accessories



SECO GPS ATV Pole Bracket System
05-08-5145



SECO 2M Graduated Collapsible GPS Antenna Tripod
05-08-5140



SECO GPS Door Mount Bracket
05-08-8155



SECO 2M Aluminum Rover Rod
05-08-8158



SECO 2M Composite Rover Rod
05-08-8161



0.2M Rod Extension
05-08-8168



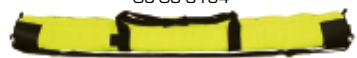
SECO 2M Fixed Height GPS Antenna Tripod
05-08-5141



2M Rover Rod Bag
05-08-8162



HI Tape Measure



SECO 2M Snap-Loc RTK Rover Rod bag
05-08-8164



05-08-8154 Bag, HD GPS Tripod



05-08-8153 Bag, 2M GPS Tripod



NEW!
2M Snaplock 4-position GPS Rover Rods Aluminum or Composite



Thumb Release Bipod Aluminum
40-60-5211

Cutting Edge Topcon GPS Antenna Technology



Hybrid Positioning Adaptor
05-08-0093



GPS Mag Mount Triple
05-08-0569

GPS Mag Mount Single
05-08-0568

Stock#	Description	Unit	ESC Price
■ TOPCON GPS ANTENNAS			
05-08-0500	10M GPS Antenna Cable Legacy	14-008012-03 Ea	\$75.00
05-08-0501	3M GPS Antenna Cable Legacy	14-008012-01 Ea	\$65.00
05-08-0502	3M GPS Antenna Cable GB-500-1000	14-050402-01 Ea	\$352.00
05-08-0503	PG-A1, GPS Antenna wo/cable	01-844201-02 Ea	\$2,195.00
05-08-0504	PG-A1, GPS Antenna w/Groundplane wo/cable	01-844201-11 Ea	\$2,495.00
05-08-0506	CR-G5, Choke Ring GPS Antenna w/Dome	99-074801-03 Ea	\$5,970.00
05-08-0093	Hybrid Positioning Adaptor.	1003241-01 Ea	\$75.00
■ ACCESSORIES - CABLES			
05-08-0073	SAE To SAE 6' Extension Cable	14-008022-01 Ea	\$22.00
05-08-0077	SAE To Cigarette Lighter Cable	14-008023-01 Ea	\$17.00
05-08-0078	SAE To Receiver Power Cable	14-008016-03 Ea	\$89.95
05-08-0079	SAE To Alligator Clips Adaptor.	14-008025-01 Ea	\$19.00
05-08-0080	SAE To 2.3ah Battery Clip Adaptor	14-008017-01 Ea	\$15.00
05-08-0076	SAE To Pigtail-Battery Cable.	PCC-A00393 Ea	\$24.95
05-08-0087	AC Charger, for GPS Receivers wo/cable	22-034101-01 Ea	\$164.95
05-08-0083	AC Charger "power cable only"	14-008052-01 Ea	\$6.00
05-08-0092	Serial Cable To Receiver DB-9 "All"	14-008005-03 Ea	\$109.95
05-08-0061	USB Cable ODU-4/USB-A "GR--3"	14-008070-01 Ea	\$120.00
05-08-0062	USB Cable To Receiver "Hipers"	14-008031-01 Ea	\$129.95
05-08-5140	2M Collapsible GPS Antenna Tripod	5119-00-YEL Ea	\$821.95
05-08-5141	2M Fixed-Height GPS Antenna Tripod	5115-00-YEL Ea	\$799.95
05-08-5141	2M HD Fixed-Height GPS Antenna Tripod	5115-10-YEL Ea	\$799.95
05-08-5145	ATV Bracket wo/Radio Pole	SECO-5198-51 Ea	\$468.95
05-08-8155	GPS Door Mount Bracket	SECO-5114-20 Ea	\$649.95
05-08-8168	0.2M, Fiberglass GPS Pole Extension	SECO-5130-10 Ea	\$41.95
05-08-8158	2M, 2-Section Aluminum Pole	SECO-5125-00 Ea	\$105.95
05-08-8161	2M, 2-Section Composite Pole	SI-4641 Ea	\$294.95
05-08-8156A	2M, Composite Pole "Top-Section"	Ea	
05-08-8156B	2M, Composite Pole "Bottom-Section"	Ea	
05-08-8160	2M Snap-Lock Composite Rod: "4-position"	SI-4649 Ea	\$395.00
05-08-8163	2M Snap-Lock Aluminum Rod: "4-position"	SI-4648 Ea	\$129.95
05-08-8162	Bag, 2M Rover Rod	SECO 8160-02-FOR Ea	\$38.95
05-08-8162	Bag, 2M HD Snap-Lock Rover Rod	SECO 8151-02-FOR Ea	\$69.95
05-08-8153	Bag, GPS Tripod 2M Fixed Height	SECO-8153-ORG Ea	\$78.95
05-08-8154	Bag, GPS Tripod HD	SECO-8154-12-ORG Ea	\$105.95
05-08-8164	Bag, GPS 2M Snap-Loc RTK Rover bag	SECO-8152-02-FLY Ea	\$76.95

- Call Toll Free 1-800-788-3307 -

Our Low Prices Will Earn Your Business, The Great Customer Service Will Keep It!

Stock#	Description	Unit	ESC Price
■ SATEL EASY-PRO 35W EXTERNAL HIGH POWERED RADIO LINK			
05-08-0301	Satellite-Easy Pro 35W	Ea	\$2,350.00
05-08-0311	GNSS Data cable, 8 Pin/ODU (For TPS)	Ea	\$240.00
05-08-0314	Power cable 4-Pin	Ea	\$138.00
05-08-0529	ADL Antenna cable/Mount, 9' (PacCrest)	Ea	\$95.00
05-08-0312	5dBi UHF Whip Antenna	Ea	\$58.00
05-08-0370	Tripod Antenna Bracket (PacCrest)	Ea	\$85.00
05-08-0316	Satel Battery Bag	Ea	\$38.00
05-08-0074	12V, 35W Battery (Interstate)	Ea	\$139.95
05-08-0536	HPB Charger, 35W (PacCrest)	Ea	\$125.00
25-05-9010	TP-10 Tripod	Ea	\$295.00
05-08-5139	Radio Antenna Mast 6'	Ea	\$82.95



By Satel



Topcon's SRL-35 high-power wireless UHF radio modem provides the signal strength you'll need to cover the largest Construction and Surveying sites. At *35 watts, the SRL-35 provides reliable signal strength up to 50 miles (80 km). Featuring a wide 70 MHz operating bandwidth coupled with user selectable channel spacing and a unique continuous data package correction algorithm, you're assured of reliable operation across the site. Compatible with most all third-party radios, the SRL-35 provides free of charge or fixed-priced wireless access to your data 24/7 (depending on frequency), as often as you need it. Use the SRL to create every solution from point-to-point to a large network with multiple modems – easily and at minimal cost. Built to IP67 standards for the harsh conditions of the jobsite, Topcon's SRL-35 features a weather-protected LCD display, integrated operator keyboard and reinforced connectors. There's even an over-temp auto-shutdown temperature feature to protect your investment. *25W limited output power version is available as an order option for geographical areas where regulatory restriction on output power applies.

Features

- High output power of up to 35Watt*
- Wide 70 MHz (403-473 MHz) operating range
- User selectable channel spacing (12.5, 20 or 25 kHz)
- Fully compatible with 3rd party radio broadcast such as Satel, Trimble and Pacific Crest
- Multi-function user interface to indicate current operating status and configure the radio modem
 - Automatic prevention of overheating
- Industry standard IP67 rating to withstand harsh surveying and construction environment

■ ADL VANTAGE/VANTAGE PRO RADIO KITS AND ACCESSORIES			
05-08-0521*	ADL Vantage Pro, 35-watt HP Radio 430-470MHz...75450-43	Ea	\$2,195.00
05-08-0562*	ADL/PDL Data/Power CableTopcon PCC-A00630	Ea	\$208.00
05-08-0560*	Whip Antenna "High Gain 5db 30" BMUF4525. PCC-C02552	Ea	\$128.00
05-08-0529*	ADL Antenna Cable w/Overmold 9'	86917 Ea	\$95.00
05-08-0570*	Pole Mount Bracket for Whip Antenna	SECO 2133-03 Ea	\$55.95
05-08-0527	ADL Vantage, 2-4 watt LP Radio 430-470MHz	K0111 Ea	\$1,650.00
05-08-0524	ADL/PDL Data/Power Cable	Spectra PCC-A02507 Ea	\$208.00
05-08-0538	ADL/PDL Data/Power Cable	Sokkia PCC-A02764 Ea	\$208.00
05-08-0535	HPB Battery and Charger, 35 watts	81818 Ea	\$405.00
05-08-0536	HPB Charger Only, 35 watts	A01509 Ea	\$125.00
05-08-0074	Battery, 12V 33Ah Lead Acid Battery.....	DCM 0035 Ea	\$139.95
05-08-0072	Battery Bag w/cables For 33ah Battery	PCC-A00644 Ea	\$146.50
05-08-0522	ADL Programming Cable DE9 Serial Connector	83486 Ea	\$115.00
05-08-0531	ADL Kit 2-4 watts, battery, Charger, bag, ant-cable	K01114 Ea	\$420.00
05-08-0532	Battery and Charger only, 2-4 watts	K01107 Ea	\$290.00
05-08-0533	Charger only, 2-4 watts	A00921 Ea	\$95.00
05-08-0561	Rubber Antenna "Hiper+" UHF.....	30-004101-01 Ea	\$69.95
05-08-0557	Rubber Antenna "Hiper II/V/Ga/Gb/Pro/DII	ANXG450BN Ea	\$38.00
05-08-0558	Rubber Antenna "Hiper Lite" SS 915+	30-030012-01 Ea	\$71.95
05-08-0559	Whip Antenna "Unity Gain"	PCC-C02549 Ea	\$98.00
05-08-0523	ADL Antenna Cable w/Mount 9'	PCC-A02304 Ea	\$140.00
05-08-0528	ADL Antenna Cable w/Mount 26'	PCC-A02304-25 Ea	\$175.00
05-08-0563	PDL Antenna Cable w/Mount 15'	90963-15 Ea	\$140.00
05-08-0565	PDL Antenna Cable w/Mount 25'	PCC-A02264 Ea	\$190.00
05-08-0569	Mag Mount, Triple w/5/8" Threads	SECO 5114-02 Ea	\$199.95
05-08-5139	Radio Antenna Mast, (6).....	SECO 5139-02-YEL Ea	\$82.95



05-08-0521
Pacific Crest ADL Vantage Pro
High Powered Data Link
2 - 35-watt Configurations



05-08-05
Pacific Crest ADL Vantage
Low Powered Data Link
2 - 4-watt Configurations

SECO 6' Collapsible
Radio Ant. Mast
05-08-5139



Precision Positioning Systems For Land Surveyors And General Contractors

TOPCON DATA COLLECTORS TESLA/FC-25-25A/236/250/2600

NOW FEATURING MAGNET FIELD SOFTWARE



FC-5000

- 7 inch sunlight readable display
- Intel® Atom™ Z3745 Processor
- Full feature usage in either portrait or landscape Rugged MIL-STD 810G standard and IP68 certified
- Windows 10 Professional, embedded
- Front and Rear facing digital cameras



FC-336

- MIL-STD 810G and IP68 Certified
- Intergrated 2.5m GPS receiver
- Intergrated 3.5G Cellilar Connectivity
 - 1GHz Processor
- Compact, rugged design
- Built-in Bluetooth® wireless technology and WiFi
 - Ultra-bright, TFT, color touch screen display
 - 5M pixels auto-focus camera



FC-500

- Large Sunlight Readable Display
- Rugged, Mil-Std 810G and IP68 certified
 - 1GHz processor
 - 5 Megapixel camera
 - 512Mb RAM,
 - 8GB Flash Storage
 - 3.5G cellular module (option)
 - Internal GPS 2-5m accuracy
- Built-in wireless Bluetooth® and WiFi connectivity

Parani™ SD1000 Bluetooth Serial Adapter



Parani™ UD100



The Parani-UD100 is a class 1 type Bluetooth USB adapter that supports 300 meters of wireless transmission distance by default. The working distance can be further extended up to 1000 meters using optional replacement antenna. Thanks to its longer communication distance than other regular Bluetooth USB adapters, it is suitable for industrial or special applications. Parai-UD100 is compatible with other SENA Bluetooth devices perfectly.

Stock#	Description	Unit	ESC Price
■ TOPCON FC-5000 ATOM TABLET FIELD COMPUTER			
05-86-3151	FC-5000 Field Computer GEO.....1010084-01	Ea	\$1,995.00
05-86-3153	FC-5000 Field Computer GEO Cell.....1010086-01	Ea	\$2,345.00
05-86-3161	FC-5000 Cradle Mount Kit.....1015317-01	Ea	\$225.00
05-86-3161C	FC-5000 Cradle Only1015316-01	Ea	\$90.00
05-86-3162	FC-5000 Ultra Clear Screen Protector1013584-01	Ea	\$30.00
05-86-3163	FC-5000 Stylus, tether replacement.....1013590-01	Ea	\$20.00
05-86-3164	FC-5000 Rechargeable Li-Ion battery1013591-01	Ea	\$175.00
05-86-3164	FC-5000 Docking Station1013592-01	Ea	\$399.00
05-86-3166	FC-5000 Soft Case.....559316	Ea	\$36.05
■ TOPCON TESLA TABLET DATA COLLECTOR Accessories			
05-86-5056	Tesla 4-Screw Pole Mount Bracket1000183-01	Ea	\$195.00
05-86-5056Q	Tesla R Cradle only5200-072	Ea	\$177.97
05-86-5057	Tesla Vehical Charger Cable61116	Ea	\$15.00
05-86-5059	Tesla Wall Charger, 18watt USA.....61114	Ea	\$40.00
05-86-5058	Tesla Li-Ion Battery Pack.....61117	Ea	\$129.00
05-86-5057Q	Tesla Travel Quick Charger for Spare Batteries61118	Ea	\$225.00
05-86-5061	Tesla Hand Strap.....61123	Ea	\$15.00
05-86-5063	Tesla Universal Screen ProtectorsPSCR-02333	Ea	\$9.95
05-86-5063	Tesla Stylus61125	Ea	\$3.00
05-86-3309	USB Download Cable (Type mini-B To Type A)60630	Ea	\$25.00
05-96-6060	Instrument Cable, 9-pin148-SCGTSSOKTOP	Ea	\$95.00
■ TOPCON FC-336 806MHZ WITH WINDOWS MOBILE 6.5			
05-86-2101	FC-336 Data Collector "Hardware Only"1003429-01	Ea	\$2,295.00
05-86-2205	Battery Pack.....60991	Ea	\$75.00
05-86-2206	AC Wall Charger.....60992	Ea	\$59.95
05-86-2203	Vehical Charger.....60996	Ea	\$199.95
05-86-2207	Stylus Pens60993	Ea	\$24.95
05-86-2209	Handstrap.....60995	Ea	\$29.95
05-86-2210	Softcase60999	Ea	\$35.99
05-90-0150	Pole Clamp For Data Collector.....Si-6031	Ea	\$72.95
05-86-2202	Cradle (pole clamp sold seperatly).....Si-6064	Ea	\$79.95
05-86-3309	USB Cable (Type mini-B To Type A)60630	Ea	\$25.00
■ TOPCON FC-500 ADVANCED WINDOWS MOBILE SYSTEM			
05-86-3117	FC-500 Standard, Wifi/Bluetooth.....1003045-01	Ea	\$1,700.00
05-86-3119	FC-500 GEO, Wifi/Bletooth/GPS/Camera.....1003045-03	Ea	\$2,055.00
05-86-3121	FC-500 GEO/3G, Wifi/Bletooth/GPS/Camera.....1003045-05	Ea	\$2,524.00
05-86-3333	AC Wall Charger,.....1003781-01	Ea	\$77.30
05-86-3135	FC-500 Vehical Charger Cable61116	Ea	\$15.50
05-86-3137	Battery Pack, Lion1003778-01	Ea	\$128.00
05-86-3139	Download Cable (Micro Client).....1003787-01	Ea	\$20.60
05-96-3141	Instrument Cable, Serial/Com1003790-01	Ea	\$20.60
05-86-3143	FC-200/250/500 Pole Bracket "Ram Style".....1004111-01	Ea	\$180.25
05-86-3143	FC-200/250/500 Pole Bracket "QR Style".....808156	Ea	\$159.95
05-86-3142	FC-500 Screen Protector, 2-pk.....1003797-01	Ea	\$48.10
05-86-3144	FC-200/250/500 Soft Carry Case.....60958	Ea	\$36.10
05-86-3145	FC-500 Soft Tripod Hook.....65196-20	Ea	\$19.95
05-86-3146	FC-500 Capacitive Stylus w/Tether1003795-01	3-Pk	\$30.90
■ PARANI SD1000 SERIAL BLUETOOTH ADAPTORS			
05-06-1834	Parani Bluetooth Adaptor, Unit Only.....SD1000	Ea	\$119.95
05-06-1838	Standard Battery for Parani Bluetooth Adaptor.....BPC-G02	Ea	\$21.00
05-06-1839	Extended Battery for Parani Bluetooth Adaptor.....BPC-G03	Ea	\$36.75
05-06-1837	5dBi Antenna for Parani Bluetooth Adaptor.....DAT5-G01R	Ea	\$8.40
05-06-1840	3dBi Antenna for Parani Bluetooth Adaptor.....DAT-G01R	Ea	\$6.30
05-06-1840	1dBi Antenna for Parani Bluetooth Adaptor.....BPC-G02	Ea	\$2.80
05-06-1841	USB Power Cable F/Parani Bluetooth Adaptor.....UPA-G01	Ea	\$3.15
05-06-1842	Power Cable F/Parani Bluetooth Adaptor.....OPA-G01	Ea	\$18.90
05-06-1835	Instrument Cable for Parani BT AdaptorGeo-BTPigtail-TPC	Ea	\$95.00
05-06-1844	DB-9 Female - Male Gender ChangerFM9GD-G01	Ea	\$5.95
■ PARANI UD100 Class 1 USB/BLUETOOTH ADAPTORS			
05-06-1845	Parani UD100 USB/Bluetooth Adaptor, Unit OnlyUD100	Ea	\$49.00

- Call Toll Free 1-800-788-3307 -

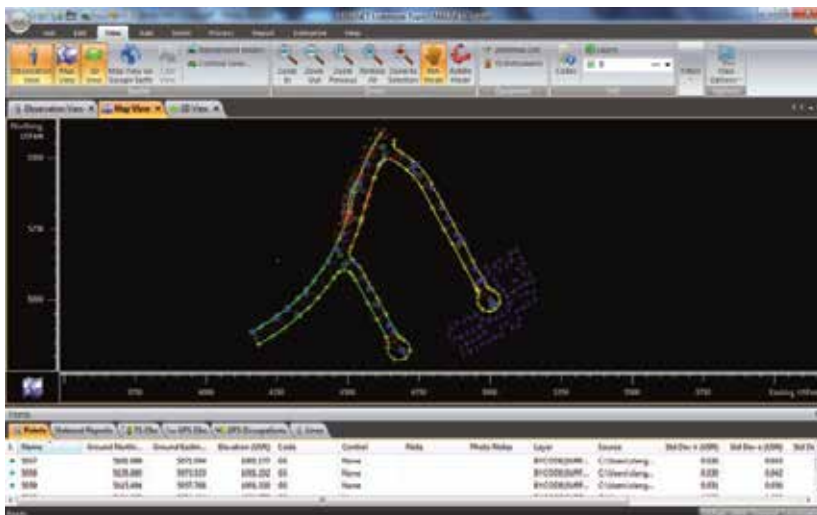
Our Low Prices Will Earn Your Business, The Great Customer Service Will Keep It!

Stock#	Description	Unit	ESC Price
■ MAGNET FIELD			
05-86-5026	Magnet Field GIS61055 Ea	\$5369.00
05-86-5011	Magnet Field Basic.....	.61056 Ea	\$525.00
05-86-5012	Magnet Field + Roads61057 Ea	\$1,051.00
05-86-5013	Magnet Field + Robotics61058 Ea	\$1,051.00
05-86-5014	Magnet Field + Roads + Robotics.....	.61059 Ea	\$1,576.00
05-86-5015	Magnet Field + Robotics + GPS + Roads.....	.61064 Ea	\$2,627.00
05-86-5016	Magnet Field GPS Only (Includes mmGPS)61060 Ea	\$1,051.00
05-86-5017	Magnet Field + Roads + GPS (Includes mmGPS).....	.61061 Ea	\$1,576.00
05-86-5018	Magnet Field Basic + GPS (Includes mmGPS).....	.61062 Ea	\$1,576.00
05-86-5019	Magnet Field Basic + Roads + GPS (Includes mmGPS).....	.61063 Ea	\$2,101.00
05-86-5020	Magnet Field Complete (Includes mmGPS).....	.61064 Ea	\$2,627.00
05-86-5021	Magnet Field Solution 12-Month License61065 Ea	\$768.00
05-86-5022	Trade Up Field Solution 12-Months From TopSURV61066 Ea	\$495.00
05-86-5023	Upgrade Field To Field Solution 12-Month License61158 Ea	\$495.00
05-86-5024	Field Product maintenance 12-Month License61155 Ea	\$324.00
05-86-5027	Competitive Product Upgrade To Magnet Field	1004686-01 Ea	\$495.00
■ MAGNET MODULE ADD-ONS			
05-86-4950	GPS, Module Add-on.....	.61086 Ea	\$1,050.00
05-86-4951	Robotics, Module Add-on61085 Ea	\$525.00
05-86-4952	Roads, Module Add-on.....	.61087 Ea	\$525.00
■ MAGNET OFFICE			
05-86-5031	Office Tools61067 Ea	\$525.00
05-86-5032	Office Tools + Post Processing61068 Ea	\$2,627.00
05-86-5033	Office Tools Solution + Post Processing 12-Months61069 Ea	\$516.00
05-86-5034	Trade Up To Office Tools F/Topcon Tools 12-Months.....	.61070 Ea	\$324.00
05-86-5035	Upgrade Office Tools To Office Tools Solu. 12-Months.....	.61159 Ea	\$324.00
05-86-5036	Magnet Office Maintenance 12-Months	1012739-01 Ea	\$324.00
■ MAGNET ENTERPRISE			
05-86-5041	Magnet Enterprise 12-Month License61082 Ea	\$324.00
TPS Online Download	5 GB Cloud Storage 12-Month License.....	.61157 Ea	\$324.00
	Magnet Mobile Exchange	Free Download Ea	\$0.00
■ TOPCON TOTAL CARE TRAINING PORTAL			
05-06-1891	Total Care Training Login "Up to 3-Seats"	TTC1YR1-3 Ea	\$500.00
05-06-1892	Total Care Training Login "Up to 9-Seats"	TTC1YR4-9 Ea	\$750.00
05-06-1893	Total Care Training Login "10+ Seats"	TTC1YR410 Ea	\$1,000.00

MAGNET 4

CLOUD BASED SOLUTION FOR PRECISE POSITIONING

A family of software solutions that streamlines the workflow for surveyors, contractors, engineers and mapping professionals.



MAGNET 4 CLOUD BASED SOLUTION FOR PRECISE POSITIONING

A family of software solutions that streamlines the workflow for surveyors, contractors, engineers and mapping professionals.



MAGNET Field is controller software that will increase your productivity and connect you to others in the field as well as in the office.

- Cloud connected data exchange and backup
- Survey: Topo, Auto Topo, X-Section
- Stake: Points, Lines, Surface, Curve, Real-Time Roads, Slope
- Calculate: Inverse, Intersection, Curves, Area, Traverse, DTM



MAGNET Enterprise is a web browser-based environment that simplifies managing field and office data in the cloud. Track assets and communicate with everyone involved on your projects. Login from any browser for live updates. Save time and collaborate.

- Web browser access
- Map view of field data
- Live data exchange
- Data secure backup
- Chat and communicate to-do items



MAGNET Office is a stand-alone processing and CAD solution for surveying and grading applications.

- Office Tools as stand-alone or add on to AutoCAD®
- Office Survey for project drafting and adjustment
- Office Site for construction jobsite management and design
- Upload/Download to Enterprise
- Chat and communicate with others

Precision Positioning Systems For Land Surveyors And General Contractors

SPECTRA PRECISION "TDS" DATA COLLECTORS

FEATURING SPECTRA SURVEY PRO SOFTWARE



NEW!

SPECTRA PRECISION RANGER 3 SERIES

- Windows Mobile 6.5
- 53 tactile key alphanumeric keypad
- 8-position spider key
- 640 x 480 sun-light readable color TFT display with resistive touchscreen
- Li-ion rechargeable battery
- 30 hours of operation under normal conditions
 - Complete recharge in 3 hours
- Battery charge status LED indicator
- Integrated speaker and microphone
- RS-232 and USB (client and host) ports

Call About Our Recon Trade-In-Upgrade Program! **From: \$3,299.00**

Spectra Precision is pleased to introduce the new Ranger™ 3 Series of Data Collectors. This powerful and versatile data collector comes standard with an 800MHz processor, 256 MB of memory, a full VGA display and integrated Bluetooth, GPS, Compass and 802.11 Wi-Fi. Powered by Windows Mobile® 6.5 Professional operating system, the Ranger features the same ruggedness common to all Spectra Precision data collectors meeting MIL-STD-810G military level specifications and has an IP67 rating against dust and water. Plus, as always, the Ranger is designed to run Survey Pro™ field software.



NEW!

SPECTRA NOMAD 900 SERIES

- Windows Mobile 6.1
- Numeric keypad with backlighting
- 480 x 640 sun-light readable color TFT display with touchscreen
- Li-ion rechargeable battery
- 15 hours of operation under normal conditions
 - Complete recharge in 4.5 hours
- Integrated speaker and microphone
- RS-232 and USB (client) ports

Call About Our Recon Trade-In-Upgrade Program! **From: \$1,999.00**

Spectra Precision is pleased to offer the new Nomad™ 900 Series of Data Collectors. This powerful and full-featured data collector comes standard with an 806MHz processor, 128 MB of memory, a full VGA display and integrated Bluetooth and GPS. Options are also available for integrated 802.11 Wi-Fi, GSM WWAN and 5MP camera. Powered by Windows Mobile® 6.1 operating system, the Nomad features the same ruggedness common to all Spectra Precision data collectors meeting MIL-STD-810F military level specifications and has an IP67 rating against dust and water. Plus, as always, the Nomad is designed to run Survey Pro™ field software.



NEW! T41 SERIES

The Spectra Precision® T41™ Data Collector is rugged, powerful, connected and compact, offering high performance with a high-resolution outdoor readable display. The slim, ergonomic design is easy to hold and enables all-day use. A new capacitive touch-screen protected by Gorilla® Glass provides intuitive and responsive finger-tip touch capability. The T41 handheld has 3.75G cellular data capabilities for use with VRS networks, plus cellular voice and SMS capabilities. The 8-megapixel camera can be set to automatically include time and location data from the integrated GPS receiver. **From: \$2,599.00**

Call About Our Recon Trade-In-Upgrade Program!

T41 Includes 1GHz 512 memory/16GB storage. WWAN, Bluetooth, WiFi, GPS, 8MP camera.



DATA COLLECTOR GOT THE BLUES?

Send it to ESC
We are TDS repair
Certified and can beat
Their turnaround anytime.

Stock#	Description	Unit	ESC Price
■ RANGER 3L w/BT, WiFi, GPS & Compass			
05-86-0000	3L w/Survey Standard.....	RG3-S31-001 Ea	\$3,299.00
05-86-0001	3L w/Survey Pro.....	RG3-P31-001 Ea	\$3,699.00
05-86-0002	3L w/Survey Pro Robotics.....	RG3-R31-001 Ea	\$4,499.00
05-86-0003	3L w/Survey Pro GNSS.....	RG3-G31-001 Ea	\$4,499.00
05-86-0004	3L w/Survey Pro Max GNSS+Robotics.....	RG3-M31-001 Ea	\$4,999.00
■ RANGER 3CX w/BT, WiFi, GPS, Compass, 5MP Camera & WWAN			
05-86-0010	3XC w/Survey Standard.....	RG3-S01-001 Ea	\$4,099.00
05-86-0011	3XC w/SurveyPro.....	RG3-P01-001 Ea	\$4,499.00
05-86-0012	3XC w/SurveyPro+Robotics.....	RG3-R01-001 Ea	\$5,299.00
05-86-0013	3XC w/SurveyPro GNSS.....	RG3-G01-001 Ea	\$5,299.00
05-86-0014	3XC w/Survey Pro Max GNSS+Robotics.....	RG3-M01-001 Ea	\$5,799.00
■ RANGER 3RC w/BT, WiFi, GPS, Compass, 5MP Camera & 2.4GHz Radio			
05-86-0020	3RC w/SurveyPro+Robotics.....	RG3-R41-001 Ea	\$6,849.00
05-86-0021	3RC w/Survey Pro Max GNSS+Robotics.....	RG3-M41-001 Ea	\$7,349.00
05-86-0022	3RC w/Layout Pro Software.....	RG3-C41-001 Ea	\$5,850.00
05-86-0051	Office Layout Pro Software.....	63820-00 Ea	\$795.00
■ RANGER 3 ACCESSORIES			
05-86-0024	Rechargeable Battery.....	67501-01 Ea	\$125.00
05-86-0025	Battery Charger.....	67501-03 Ea	\$95.00
05-86-0026	Stylus Pack (2) w/Lanyard.....	67501-04 Ea	\$25.00
05-86-0027	Hand Strap.....	67501-05 Ea	\$15.00
05-86-0028	Screen Protectors "Ultra Clear" pkg-15.....	67501-06 Ea	\$18.00
05-86-0031	Audio Jack Dust Cover.....	67501-09 Ea	\$6.00
05-86-0032	I/O Port Dust Cover.....	67501-10 Ea	\$9.00
05-86-0033	Standard Carry Case.....	67501-11 Ea	\$30.00
05-86-0034	USB Instrument Cable "To Nivo".....	67201-00 Ea	\$15.00
05-96-6070	PC Serial Cable 9-Pin to 9-Pin Null.....	67901-05 Ea	\$20.00
05-86-0036	SP Focus - Radio -Antenna, 2.4GHz TNC/R... 53009009-SPN	Ea	\$25.00
05-86-0030	Pole Bracket QR, "Complete" SECO.....	67501-08 Ea	\$155.00
05-86-0038	Cradle Assembly Ranger-3/TSC3.....	5200-065 Ea	\$82.95
05-90-0150	Pole Clamp Q/R Claw.....	5200-150 Ea	\$75.95
05-90-0137	Ranger 3 Tripod Hook.....	67501-12 Ea	\$45.00
■ NOMAD 900B 128MB/512MB AND BLUETOOTH			
05-86-0301	Nomad-900B w/Survey Standard.....	EG2-SGNGBBB-SS Ea	\$1,999.00
05-86-0302	Nomad-900B w/SurveyPro.....	EG2-SGNGBBB-SP Ea	\$2,399.00
05-86-0303	Nomad-900B w/SurveyPro+Robotics.....	EG2-SGNGBBB-SR Ea	\$3,199.00
05-86-0304	Nomad-900B w/SurveyPro GNSS.....	EG2-SGNGBBB-SG Ea	\$3,199.00
05-86-0305	Nomad-900B w/SurveyPro+"Max".....	EG2-SGNGBBB-SM Ea	\$3,699.00
■ NOMAD 900LD 128MB/1GB, Bluetooth, 802.11 and GPS			
05-86-0321	Nomad-900LD Survey Standard.....	EG2-SGNHBBDF-SS Ea	\$2,199.00
05-86-0322	Nomad-900LD SurveyPro.....	EG2-SGNHBBDF-SP Ea	\$2,599.00
05-86-0323	Nomad-900LD SurveyPro+Robotics.....	EG2-SGNHBBDF-SR Ea	\$3,399.00
05-86-0324	Nomad-900LD SurveyPro GNSS.....	EG2-SGNHBBDF-SG Ea	\$3,399.00
05-86-0325	Nomad-900LD SurveyPro+"Max".....	EG2-SGNHBBDF-SM Ea	\$3,899.00
■ NOMAD 900XC 128MB/1GB, Bluetooth, 802.11, GPS, 5MP Camera, WWAN			
05-86-0521	Nomad-900XC Survey Standard.....	EG2-SGNJCFJ-SS Ea	\$2,899.00
05-86-0522	Nomad-900XC SurveyPro.....	EG2-SGNJCFJ-SP Ea	\$3,299.00
05-86-0523	Nomad-900XC SurveyPro+Robotics.....	EG2-SGNJCFJ-SR Ea	\$4,099.00
05-86-0524	Nomad-900XC SurveyPro GNSS.....	EG2-SGNJCFJ-SG Ea	\$4,099.00
05-86-0525	Nomad-900XC SurveyPro+"Max".....	EG2-SGNJCFJ-SM Ea	\$4,599.00
■ NOMAD ACCESSORIES			
05-96-6070	PC Serial Cable 9-Pin to 9-Pin.....	67901-00 Ea	\$20.00
05-86-0351	USB Interface Cable.....	67201-00 Ea	\$15.00
05-86-0115	Nomad/Ranger 12V Vehicle Charger.....	67901-10 Ea	\$195.00
05-86-0353	Nonad/Ranger-X AC Charger, 110v.....	67901-09 Ea	\$60.00
05-86-0354	Rechargeable Lithium-ion Battery Module.....	67201-01 Ea	\$135.00
05-86-0355	Spare Battery Charger.....	67201-04 Ea	\$80.00
05-86-0356	Nomad AA Battery Module.....	67201-05 Ea	\$115.00
05-86-0357	Stylus Pen Lanyard.....	67901-00 Ea	\$12.00
05-86-0371	Nomad/Recon Tripod Bracket.....	67901-06 Ea	\$50.00
05-86-3321	Screen Protectors Universal.....	PSCR-02346-M5 Ea	\$9.95
05-86-0374	Hand Strap.....	67201-07 Ea	\$12.00
05-86-2069	Standard Nylon Carry Case "Blue".....	67101-01 Ea	\$35.00
05-86-0379	Nomad Stylus Pen.....	67201-06 Ea	\$28.00
05-90-0150	Pole Clamp "Only" For All Data Collectors.....	5200-150 Ea	\$72.95
05-90-0159	Cradle "Only" For Nomads.....	SI-6053 Ea	\$79.95

- Call Toll Free 1-800-788-3307 -

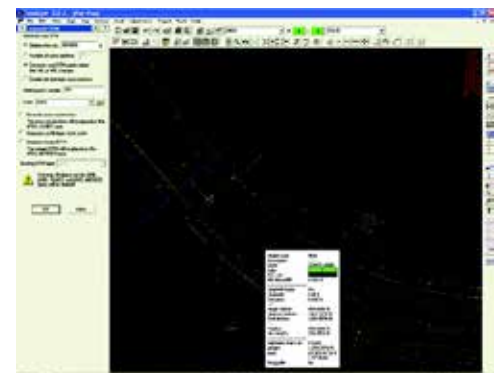
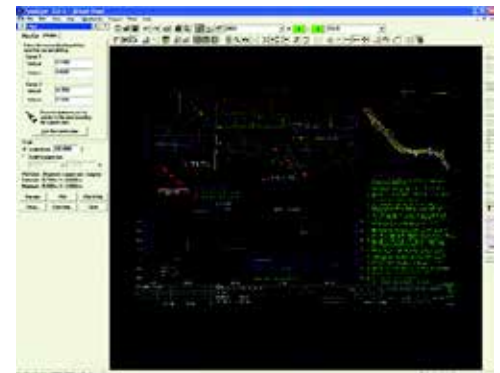
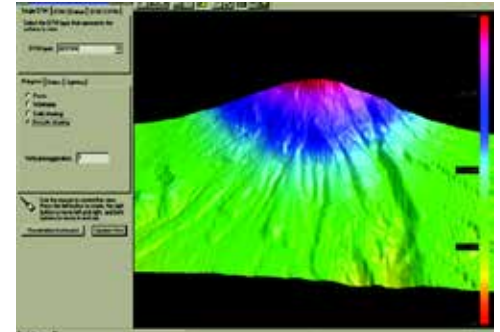
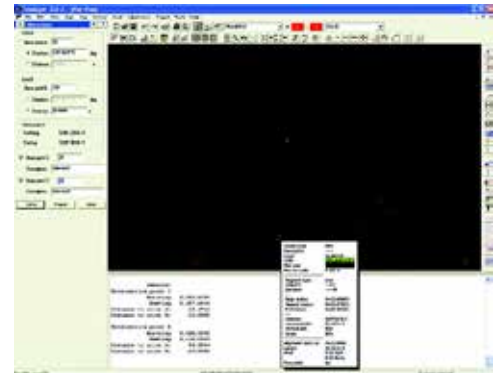
Our Low Prices Will Earn Your Business, The Great Customer Service Will Keep It!

Stock#	Description	Unit	ESC Price
■ SPECTRA PRECISION T41			
Includes 1ghz 512 memory/16gb storage. wwan, bluetooth, wifi, gps, 8mp camera.			
05-86-0201	T41 with Survey Standard	T41-S01-001 Ea	\$2,599.00
05-86-0202	T41 with Survey Pro	T41-P01-001 Ea	\$2,999.00
05-86-0203	T41 with Survey Pro Robotic.....	T41-R01-001 Ea	\$3,799.00
05-86-0204	T41 with Survey Pro GNSS.....	T41-G01-001 Ea	\$3,799.00
05-86-0205	T41 with Survey Pro Max (GNSS & Robotic).....	T41-M01-001 Ea	\$4,299.00
■ T41 ACCESSORIES			
05-86-0231	T41 International Charging Kit.....	67601-01 Ea	\$55.00
05-86-0232	T41 Vehical Charging Kit.....	67601-02 Ea	\$35.00
05-86-0233	T41 External battery pack	67601-15 Ea	\$275.00
05-86-0234	T41 Stylus and Tether	67601-13 Ea	\$15.00
05-86-0235	T41 USB Host Adaptor	67601-06 Ea	\$35.00
05-86-0236	T41 Wrist Strap	67601-07 Ea	\$12.00
05-86-0237	T41 Capacitive Touch Screen Glove (N)	67601-08 Ea	\$40.00
05-86-0238	T41 Capacitive Touch Screen Glove (XL)	67601-09 Ea	\$40.00
05-86-0239	T41 External GPS Antenna	67601-10 Ea	\$40.00
05-86-0240	T41 Ultra Clear Screen Protectors (2) with cloth.....	67601-11 Ea	\$10.00
05-86-0242	T41 Range Pole Bracket	67601-16 Ea	\$155.00
05-86-0241	T41 Port Cover	67601-14 Ea	\$15.00
■ 12-MONTH EXTENDED WARRANTIES			
05-86-0801	DC & Field Software, No Tablets.....	EWSPN-CU Ea	\$380.00
05-86-0802	DC & Field Software, No Tablets Reinstatement.....	EWSPN-CU-RENEW Ea	\$380.00
05-86-0803	Field Software Only.....	EWSPN-CU-SW Ea	\$255.00
■ TDS RECON ACCESSORIES			
05-86-2067	Recon Desktop Cradle	67101-28 Ea	\$290.00
05-86-2068	AA Power Boot Module	67101-05-SPN Ea	\$100.00
05-86-2069	Standard Nylon Carry Case "Blue".....	67101-01 Ea	\$35.00
05-86-0371	Nomad/Recon Tripod Bracket.....	67901-06 Ea	\$50.00
05-86-2071	Recon Cradle Only "QR".....	67101-SPN Ea	\$79.95
05-86-2074	Rechargeable battery "Power Boot Module".....	67101-01-SPN Ea	\$95.00
05-86-0109	USB Data Cable	67101-00-SPN Ea	\$20.00
05-96-6070	PC Serial Cable 9-Pin to 9-Pin Null.....	67901-05 Ea	\$20.00
05-86-2077	Stylus Pens, (2-Pack).....	67101-06-SPN Ea	\$6.00
05-86-2078	Display Protectors 2-pk	JAVO 704-0008-01Q Ea	\$10.00
05-86-2079	12V Vehicle Charging Cable	67101-03-SPN Ea	\$44.95
05-86-2080	Elastic Hand Strap.....	67101-07-SPN Ea	\$12.00
05-86-2083	Recon Tripod Hook	67101-10-SPN Ea	\$20.00
05-86-2086	AC Charger, 110v "New Style".....	67101-02-SPN Ea	\$50.00
05-86-0357	Stylus Pen Lanyard	67901-00 Ea	\$12.00
■ INSTRUMENT CABLES, RANGER, NOMAD, RECON			
05-96-6060	9-pin to Lietz, Sokkia, Topcon.....	148-SCGTSSOKTOP Ea	\$95.00
05-96-6061	9-pin to Geodimeter Dual-Port Battery 148-SCGEOD600STRT Ea		\$95.00
05-96-6062	9-pin to Nikon Total Station	148-SCNTG Ea	\$95.00
05-96-6063	9-pin to Pentax Total Station.....	148-SCPENT Ea	\$95.00
05-96-6064	9-pin to Leica Total Station.....	148-SCWILD Ea	\$95.00
05-96-6065	9-pin to Zeiss Total Station.....	148-SCZEISS Ea	\$100.00
05-96-6070	PC Serial Cable 9-Pin to 9-Pin.....	67901-05 Ea	\$20.00
05-86-0109	USB Data Cable	67101-00-SPN Ea	\$20.00
■ SPECTRA PRECISION SURVEY OFFICE (SPSO) SOFTWARE			
05-97-0781	Spectra Precision Survey Office Basic.....	63700-00 Ea	\$495.00
05-97-0782	Spectra Precision Survey Office Complete	63710-00 Ea	\$2,795.00
05-97-0783	Survey Office - Basic Upgrade to Complete.....	63714-00 Ea	\$2,300.00
■ EXTENDED WARRANTY - SURVEY OFFICE			
05-97-0811	Software Maintenance - SPSO Office.....	EWSPN-SPSO-SW Ea	\$350.00
05-97-0812	Reinstatement - SPSO Office.....	EWSPN-SPSO-RENEW Ea	\$525.00
■ FORESIGHT DXM - DATA MANAGEMENT AND EXCHANGE			
05-97-1025	ForeSight DXM.....	PCS-DXM1001 Ea	\$399.00
05-97-1026	ForeSight DXM w/Basic Adjustments.....	PCS-DXM1002 Ea	\$448.00
■ SURVEY PRO MODULES			
05-97-1017	SurveyPro leveling Module.....	6RGR-SMA-SL Ea	\$299.00



SPECTRA PRECISION PC SOFTWARE

FORESIGHT'S ADVANCED ROAD LAYOUT
ALLOWS YOU TO GRAPHICALLY MODEL
YOUR ROAD AND TERRAIN DATA



Precision Positioning Systems For Land Surveyors And General Contractors

3D LN-100 Layout Navigator

Easy-to-use solution that streamlines construction layout

- Layout and Topo measurement with extremely simple operation
- Simple instrument set up with Automatic leveling
- Android Terminal as controller
- One-person layout by Automatic Target Tracking
- Compact and Light weight design
- TSshield™, Advanced Security and Maintenance



Stock#	Description	Unit	ESC Price
■ TOPCON 3D LN-100 3D LAYOUT NAVIGATOR			
05-05-0262	Topcon Layout Navigator Wifi/BT w/Case.....	213137112 Ea	\$14,621.00
05-05-0262	Topcon Layout Navigator Wifi w/Case	213137102 Ea	\$13,385.00
■ ACCESSORIES FOR 3D LN-100 3D LAYOUT NAVIGATOR			
05-05-0262	Topcon ATP2 Sliding 360 Prism Kit	210152700 Ea	\$1,470.90
05-05-0280	Topcon X-Y Positioning Unit	1003942-0 Ea	\$3,084.90
40-50-5047	1' Mini Stakeout Rod	Seco 5010-00 Ea	\$81.95
05-05-0691	ATP-1 360° Prism Assembly, PS/DS/SRX.....	210150005 Ea	\$1,470.90
05-05-0350	Topcon 360 Degree Builders Prism.....	1004684-01 SURSK Ea	\$818.85
30-06-0155	Mini Prism Package.....	6200-11-FOR Ea	\$133.95
40-50-5055	Robotic Carbon Fiber Prism Pole	60218 Ea	\$285.00
05-05-0621	Spacer 27mm for ATP-1-8' Robotic Rod	1001141-01 Ea	\$25.00
40-60-5085	8' Vial w/Screws	D11234 Ea	\$21.95
40-60-5201	Topcon Bipod-Composite For Prism Pole	1009273-01 Ea	\$159.95
40-60-5212	Topcon Bipod-Aluminum For Prism Pole.....	808897 Ea	\$169.95
25-05-6112	Elevator-Tripod 10' HD Aluminum Nedo	210683-185 Ea	\$499.00
25-05-6150	Mini Tripod, Aluminum	5401-23-BLK Ea	\$190.00
25-05-9005	TP-5 "Tri-Clad" Tripod Nedo.....	200513-185 Ea	\$269.95
25-05-9010	TP-10 HD Wooden Tripod Topcon.....	59010 Ea	\$295.00
25-05-9050	Tri-Max HD Q/R Tripod Crain.....	90550 Ea	\$419.95
25-10-5069	All Surface Tripod Feet.....	60-10FOOT Ea	\$8.75
25-10-5610	Tripod Stabilizer	SECO-5610-00 Ea	\$99.95
25-10-8150	Tripod Bag HD RhinoTek Bottom	SECO-8150-20 Ea	\$65.95
25-10-8151	Tripod Feet, Rubber	CST SV-5069 Ea	\$8.25

- Call Toll Free 1-800-788-3307 -

Our Low Prices Will Earn Your Business, The Great Customer Service Will Keep It!

MAGNET-LAYOUT Construction Layout Software

Stock#	Description	Unit	ESC Price
	■ SURVEYMASTER / SURVEYMASTER LITE SOFTWARE		
05-86-5001	SurveyMaster 1-User60723	Ea	\$1,295.00
05-86-5002	SurveyMaster Network, USB 3-License "Network"60798	Ea	\$4,085.00
05-86-5003	SurveyMaster Lite 1-User.....60858	Ea	\$595.00
05-86-5004	UPG SurveyMaster Lite To SurveyMaster60877	Ea	\$700.00
05-86-5005	UPG SurveyMaster Lite To SurveyMaster Network.....60878	Ea	\$3,490.00
05-86-5006	UPG SurveyMaster To SurveyMaster Network.....60881	Ea	\$2,790.00

An Integrated Surveying and CAD Drafting Solution For Surveyors

Control your survey data with SurveyMaster - whether in a deeded boundary survey or a construction site. SurveyMaster was designed by surveyors for surveyors and stands alone in ease of use and seamless integration with Topcon field equipment.

ESC ENGINEERING SUPPLY COMPANY

2490 Arnold Industrial Way, Unit P, Concord, CA 94520 Sales: (800) 788-3307 Fax: (925) 680-2504

- VOLUME 17 EQUIPMENT PRICE GUIDE -

Precision Positioning Systems For Land Surveyors And General Contractors

TOPCON ES-60C SERIES

The ES-60C series is the latest instrument in the ES family with an IP66 waterproof casing and reflectorless EDM technology. The ES-60C is now available with Bluetooth to enable the user to connect a wireless data collector up to 10 m.



- Key Features:**
 Fast and Powerful EDM
 350 m Non-Prism (1,148 ft) 4000 m Prism (13,120 ft)
 Battery 15 hours
 Rugged waterproof IP66 design
 Temperature specification -20° to +60° C
 Laser pointer (Red Coaxial)
 Bluetooth® comm (10 m distance to data collector)
 RS-232 Hirose connector
 USB 2.0 Host and Slave for easy data transfers
 Single graphical backlit LCD Display
 Quick and easy Trigger Key
 Topcon style horizontal and vertical locking tangents
 25 key keyboard, with 4-way directional backlit arrow key
 TOPbasic on-board survey application software (GPT/GTS series software)
 10,000 point storage

Electronic Transits



Topcon DT-200/200L Series
Electronic Transit
10-05-3038



DWT-10/30
10"/30" Electronic Transit
10-06-5600/O1

TOPCON LASER SYSTEMS

THE #1 SELLING LASER IN THE WORLD!



Topcon RL-H4C
Construction Laser
15-08-7100
57176



Topcon RL-VH4G2
GB Smart Interior Laser
15-06-7088



- 15-15-6054
- 15-15-6056
- 15-15-6062
- 15-15-6073
- 15-15-6050

LASER ACCESSORIES

- | | | | |
|--|-----------|----|------------|
| RT-5SW Dual Grade Slope Laser | 57109 | Ea | \$7,695.00 |
| RL-200 1S DB, Single Grade Laser Package | 314910702 | Ea | \$2,995.00 |
| RL-200 1S RB, Single Grade Laser Package | 314910762 | Ea | \$3,295.00 |
| RL-200 2S DB, Dual Grade Laser Package | 314920722 | Ea | \$3,995.00 |
| RL-200 2S RB, Dual Grade Laser Package | 314920742 | Ea | \$4,295.00 |
| RL-SV2S, Dual Grade Laser Package (RB) | 313990702 | Ea | \$2,495.00 |
| RL-SV2S, Dual Grade Laser Package (DB) | 313990752 | Ea | \$2,295.00 |
| LS-80A Laser Sensor | 313510702 | Ea | \$195.00 |
| LS-80L Laser Sensor | 313540702 | Ea | \$275.00 |
| Sensor Holder 6 for LS-80's | 312890112 | Ea | \$60.00 |
| LS-B10 Sensor w/Case | 57110 | Ea | \$695.00 |
| Wall Mount-1C | | Ea | \$125.00 |

Remote Control
RC-300W
300-Meter Range

New! RL-200 Series Single/Dual Slope Lasers



- Five Year Guarantee
- 1100 Meter Diameter Working Range
- Available with Dry cell or Rechargeable Batteries
- Includes LS-80L Laser Sensor
- -5% to +25% on single axis
- 10% +- on Second axis for dual slope model

RT-5SW
"Smart" Slope Laser
With Integrated Remote Control
and New 30-hour battery
600 Meter Laser Range



New! RL-SV2S Dual Slope Laser



- 15-08-7069 RL-SV2S **Features:**
 Long Range Operation (800m)
 Horizontal, Multi-Slope & Vertical Applications
 Extra Long Battery Life (120 hours)
 Tough IP66 Construction Rating
 Remote Control



Multi-Use Applications

Designed for multiple types of tasks, the RL-SV2S can be used for horizontal, sloping and vertical laser applications. Slopes up to +/- 15 degrees can be used in either the X or Y axis. Turn it on its side and use it for layout and alignment jobs.

High Powered

With an operating range of over 800m (diameter) the RL-SV2S has the power to cover even the biggest projects.



Stock#	Description	Unit	ESC Price
TOPCON ES-60C SERIES TOTAL STATIONS			
07-10-0655	Topcon ES-62, 2" Total Station	1016947-03 Ea	\$7,100.00
07-10-0656	Topcon ES-65, 5" Total Station	1016947-04 Ea	\$5,900.00
TOPCON "DIGITAL" TRANSITS			
10-05-3035	DT-205, 5" Digital Transit	60212 Ea	\$4,190.00
10-05-3036	DT-207, 7" Digital Transit	60213 Ea	\$3,490.00
10-05-3037	DT-209, 9" Digital Transit	60214 Ea	\$2,590.00
10-05-3040	DT-205L, 5" Digital Transit PG	60215 Ea	\$4,990.00
10-05-3041	DT-207L, 7" Digital Transit PG	60216 Ea	\$4,190.00
10-05-3042	DT-209L, 9" Digital Transit PG	60217 Ea	\$3,390.00
10-35-3330	Diagonal Eyepiece 13	53331 Ea	\$280.00
10-35-3336	Battery Pack, BC-26C DT-100 Series	53346 Ea	\$120.00
10-35-3337	Battery Holder "AA" DB-35	53338 Ea	\$89.00
10-35-3343	Battery Charger BC-14B	53343 Ea	\$106.00

DAVID WHITE TRANSITS			
10-06-5600	DWT-10 Electronic Transit 10"	Ea	\$1,395.00
TOPCON LASER LEVELS RL-H4C KIT			
15-08-7101	RL-H4C Laser w/LS-80L Sensor, Rechargeable	313980702 Ea	\$950.00
15-08-7102	RL-H4C Laser w/LS-80L Sensor, Alkaline	313980752 Ea	\$795.00

TOPCON INTERIOR LASERS			
15-07-7078	RL-VH4G2 "Smart" Interior Laser (GreenBeam)	57143 Ea	\$2,970.00
15-07-7081	RL-VH4DR Interior Laser Kit (Red Beam)	57145 Ea	\$1,245.00

TOPCON SLOPE "GRADE" LASERS			
15-08-6995	RT-5SW Dual Grade Slope Laser	57109 Ea	\$7,695.00
15-08-7050	RL-200 1S DB, Single Grade Laser Package	314910702 Ea	\$2,995.00
15-08-7052	RL-200 1S RB, Single Grade Laser Package	314910762 Ea	\$3,295.00
15-08-7060	RL-200 2S DB, Dual Grade Laser Package	314920722 Ea	\$3,995.00
15-08-7062	RL-200 2S RB, Dual Grade Laser Package	314920742 Ea	\$4,295.00
15-08-7068	RL-SV2S, Dual Grade Laser Package (RB)	313990702 Ea	\$2,495.00
15-08-7069	RL-SV2S, Dual Grade Laser Package (DB)	313990752 Ea	\$2,295.00

LASER ACCESSORIES			
15-15-6054	LS-80A Laser Sensor	313510702 Ea	\$195.00
15-15-6056	LS-80L Laser Sensor	313540702 Ea	\$275.00
15-15-6062	Sensor Holder 6 for LS-80's	312890112 Ea	\$60.00
15-15-6073	LS-B10 Sensor w/Case	57110 Ea	\$695.00
15-15-6050	Wall Mount-1C	Ea	\$125.00

- Call Toll Free 1-800-788-3307 -

Our Low Prices Will Earn Your Business, The Great Customer Service Will Keep It!

Stock#	Description	Unit	ESC Price
■ TOPCON DL-500 SERIES DIGITAL LEVELS			
20-00-2301	DL-502 Digital Level.....	2112130B0 Ea	\$3,430.00
20-00-2302	DL-503 Digital Level.....	2112150B0 Ea	\$2,282.00
20-00-2350	Invar Staff BIS30 - 3 meter.....	210154200 Ea	\$4,746.00
20-00-2351	Invar Staff BIS20 - 2 meter.....	210154300 Ea	\$4,228.00
20-00-2352	Fiberglass Staff - 5 meter, 4-sections.....	210154500 Ea	\$754.00
20-00-2353	Fiberglass Staff - 16 feet, 4-sections.....	210154510 Ea	\$610.00
20-00-2354	Fiberglass Staff - 4 meter, 3-sections.....	210154400 Ea	\$587.10
20-00-2355	Aluminum Staff - 5 meter, collapsible.....	60898 Ea	\$125.00
20-00-2356	Bubble for fiberglass staff GS20L.....	60899 Ea	\$85.00
20-00-2357	Bubble for fiberglass staff GS60L.....	60900 Ea	\$40.00
20-00-2358	BDC46B Lithium Ion Battery.....	60901 Ea	\$170.00
20-00-2359	CDC68 Charger and Power cable w/flat pin.....	70368 Ea	\$250.00
■ TOPCON DL-100 SERIES ACCESSORIES			
20-00-2200	Battery Pack, BT-31Q for DL-100 series.....	52200 Ea	\$240.00
20-00-2201	Battery Holder, DB-31 for DL-100 series.....	52201 Ea	\$65.00
05-06-2104	Battery Charger, BC-19BR (120v) for DL-100 series....	51769D Ea	\$217.00
■ TOPCON ENGINEERS AUTO LEVELS			
20-25-6077	AT-B2 Auto Level, 32X.....	60907 Ea	\$1,437.00
20-25-6078	AT-B3A/PS Auto Level, 28x.....	1012379-03 Ea	\$615.00
■ TOPCON CONSTRUCTION AUTO LEVELS			
20-25-6079	AT-B4A/PS Auto Level, 24x.....	1012379-53 Ea	\$305.00
■ TOPCON CROSSLINE POCKET LASERS			
15-20-0022	LC-2 Laser w/soft case & Accessories.....	57156 Ea	\$295.00
15-20-0024	LC-4X Laser w/Hard case & Accessories.....	57151 Ea	\$495.00
■ PLS POCKET LASERS			
15-20-0001	PLS-3 Pocket Laser with soft case.....	Ea	\$265.00
15-20-0002	PLS-5 Pocket Laser with carry case.....	Ea	\$495.00
15-20-0003	PLS 180 Tool.....	Ea	\$369.95
■ SPECTRA CROSSLINE LASERS			
15-20-0011	LT20 Crossline Laser Tool.....	Ea	\$369.95

DL DIGITAL LEVELS

**Topcon DL Series High Precision Digital Levels
World's First "Wave-and-Read" Technology**

DL-502 Digital Level 60891
DL-503 Digital Level 60892

- 1 Touch Shot & Storage
- 0.6mm/0.8mm Height Accuracy
- Advanced RAB code technology
- Pre-Installed measurement programs
- Height difference measurement
- Inverse Reading for ceiling height
- Internal Memory



AT-B SERIES LEVELS

**Topcon AT-B Series Auto Levels
Precision-Built For Excellent Performance!**



Electronic and Optical Level Specifications

Model	DL-502	DL-503
Telescope		
Magnification	32X	28X
Objective Aperture	45mm	36mm
Resolving Power	3"	3.5"
Field Of View	1° 20'	1° 20'
Image	Direct	Direct
Stadia Ratio	100	100
Minimum Focus	1.5m (5.0')	1.5m (5.0')
Measurement Accuracy: (1km Double Run Leveling Loop Standard Deviation)		
Electronic Reading	0.6mm	0.8mm
Invar Staff	1.0mm	1.5mm
Fiberglass Staff	1.0mm	2.0mm
Optical Reading		

LC-2/LC-4X Crossline Lasers

Rugged, Portable and Affordable



LC-4X
4-Beam Pocket Laser



LC-2
2-Beam Pocket Laser

- Automatic Self Leveling
- One Button Feature Control
- Variable Beam Options
- Angle Lock
- Universal Mounts



- VOLUME 17 EQUIPMENT PRICE GUIDE -

Precision Positioning Systems For Land Surveyors And General Contractors

Stock#	Description	Unit	ESC Price
■ TRIPODS			
25-05-6111	Elevator-Tripod Aluminum "Economy"	60-ALQRI20ELAZ Ea	\$250.00
25-05-6112	Elevator-Tripod 10' HD Aluminum Nedo	210683-185 Ea	\$499.00
25-05-6113	Elevator-Tripod 13' HD Aluminum Nedo	210443-185 Ea	\$649.00
25-05-6150	Mini Tripod, Aluminum	5401-23-BLK Ea	\$190.00
25-05-9005	TP-5 "Tri-Clad" Tripod Nedo.....	200513-185 Ea	\$231.80
25-05-9010	TP-10 HD Wooden Tripod Topcon.....	59010 Ea	\$303.90
25-05-9040	SECO HD Aluminum Tripod.....	5301-20-ORG Ea	\$139.95
25-05-9041	SECO Economy Aluminum Tripod.....	5301-27-ORG Ea	\$69.95
25-05-9050	Tri-Max HD Q/R Tripod Crain.....	90550 Ea	\$419.95
■ TRIPOD ACCESSORIES			
25-10-2132	Tripod Adaptor, 5/8"-1/4"x20	2132-01 Ea	\$17.95
25-10-2506	Tripod Adaptor, DW To 5/8"x11	61-2506 Ea	\$19.95
25-10-2510	Tripod Adaptor, 5/8" To 3-1/2".....	2130-00 Ea	\$51.95
25-10-2511	Tripod Adaptor, 3 1/2" To 5/8"	2120-00 Ea	\$55.95
25-10-5069	All Surface Tripod Feet.....	60-10FOOT Ea	\$8.75
25-10-5610	Tripod Stabilizer	SECO-5610-00 Ea	\$99.95
25-10-8150	Tripod Bag HD RhinoTek Bottom	SECO-8150-20 Ea	\$65.95
25-10-8151	Tripod Feet, Rubber	CST SV-5069 Ea	\$8.25
25-10-2110	Quick-Fix Adapter.....	572111 Ea	\$32.00
40-60-7196	Tripod Replacement Tip F/40-60-7194	SECO SJJ20 Ea	\$2.50
05-06-1910	Topcon Survey Umbrella.....	51900 Ea	\$114.95
■ SECO PREMIER PRISMS 0/30 62mm			
30-05-1010	Prism Assembly, Single Tilting	6422-02 Ea	\$216.95
30-05-1011	Prism In Canister.....	6411-02 Ea	\$148.95
30-05-1012	Single Prism Holder, W/Target.....	6423-02 Ea	\$113.95
30-05-1015	Target Plate Only, (Specify Color).....	D10563 Ea	\$35.00
■ OMNI FIXED 73mm PRISMS			
30-06-0001	Complete Prism Assembly	1020-0 Ea	\$195.00
30-06-0002	Canister Only, Lexan 73mm.....	1001S Ea	\$35.00
30-06-0003	Retainer Screw Only	1052 Ea	\$10.50
30-06-0004	Locknut (For Top Of Pole).....	64-2016 Ea	\$5.75
30-06-0005	Prism In Canisters Only 73mm.....	1005 Ea	\$155.00
30-06-0015	Holder, Single Fixed 73mm	1025 Ea	\$98.95
30-06-0016	Holder, Single Tilting 73mm	1255-O Ea	\$89.00
30-06-0030	Triple Prism Assembly 73mm.....	1040-O Ea	\$479.95
30-06-0045	Sighting Pole	1050 Ea	\$19.00
■ OMNI 1210 62mm TILTING PRISMS			
30-06-0100	Prism In Canister Only 62mm	1100-O Ea	\$129.00
30-06-0105	Tilting Prism With Target 62mm	1210-O Ea	\$179.95
30-06-0110	Holder, Tilting W/Target 62mm	1240-O Ea	\$99.00
30-06-0125	Prism, Triple Assembly Tilt 62mm.....	1480-O Ea	\$479.95
30-06-0130	Holder, Triple Tilt-Target 62mm	1450 Ea	\$139.00
30-06-0132	Yoke Adaptor Fitting (Replace)	1400-1405 Ea	\$23.00
30-06-0150	Lens Covers, All Types 62mm	1114 Ea	\$7.45
■ OMNI STROBE LIGHT PRISMS			
30-06-0106	Strobe Prism Assembly W/Target.....	1210-FS-O Ea	\$239.00
■ SECO MINI PRISMS			
30-06-0155	Mini Prism Package.....	6200-11-FOR Ea	\$133.95
■ OMNI "GEODIMETER" STYLE PRISMS			
30-06-0156	Mini Tilting Prism w/Vial and locking ring	5740 Ea	\$141.00
30-06-0157	Full Size Tilting Prism w/Vial and locking ring	5745 Ea	\$155.00
■ TOPCON 360° BUILDERS PRISMS			
05-05-0350	Topcon 360 Degree Builders Prism.....	1004684-01 SURSK Ea	\$818.85
05-05-0621	Spacer 27mm for ATP-1-8' Robotic Rod	1001141-01 Ea	\$25.00



Nedo TP-5 "Tri-Clad" Tripod
25-05-9005



Topcon TP-10 HD Wooden Tripod
25-05-9010



SECO Tripod HD Bag
25-10-8150



Crain Tri-Max HD Q/R Tripod
25-05-9050



Topcon TP-45 HD Aluminum Tripod
25-05-9040



CST Aluminum Elevator Tripod
25-05-6111



Surveyor's Umbrella
05-06-1910



Tripod Adaptors
25-10-2510
25-10-2511



SECO 62mm Premier Prism Assemblies -30 or 0 offset



OMNI 73mm Fixed Prisms Assemblies -30 offset



OMNI flashing Strobe Prism
30-06-0106



SECOI Mini Prism Package
30-06-0155



OMNI Geodimeter Style Prisms



Tripod Floor Stabilizer
25-10-5610

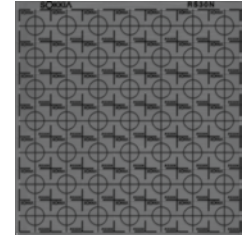
- Call Toll Free 1-800-788-3307 -

Our Low Prices Will Earn Your Business, The Great Customer Service Will Keep It!

Stock#	Description	Unit	ESC Price
■ ADHESIVE RETRO PRISM TARGETS			
30-06-1700	Retro Targets, 0-Offset, 40mm.....763-533	Ea	\$5.75
30-06-1710	Retro Targets, 0-Offset, 60mm.....763-534	Ea	\$7.50
30-06-1720	Retro Targets, 30mm 49-Count-Sheet.....6345-30	Ea	\$130.00
■ PRISM BAGS			
30-15-8070	Prism Bag, Single.....SECO 8070	Ea	\$39.95
30-15-8080	Prism Bag, Triple.....SECO 8080	Ea	\$41.95
30-15-8081	Prism Bag, Jumbo.....SECO 8081	Ea	\$57.95
30-15-8130	Prism Bag, Extra Tall.....SECO 8130	Ea	\$60.95
■ TRIBRACHS OPTICAL AND LASER			
35-05-2152	Tribrach With Optical Plummet..... 22-006008-01	Ea	\$159.95
35-05-4635	Tribrach, "Laser Plummet" Topcon.....724034	Ea	\$175.00
35-05-5501	Tribrach, "Opt-Plummet" TOPCON TR-8P.....55501	Ea	\$504.00
35-05-5502	Tribrach, "No-Plummet" TOPCON TR-8.....55502	Ea	\$430.00
35-05-8072	Tribrach Adjuster With Vial..... SECO 2002-00	Ea	\$108.95
35-05-8073	Tribrach Adjuster WO/Vial..... SECO 2001-00	Ea	\$51.95
■ TRIBRACH ADAPTERS			
35-15-1840	Tribrach Adapter, Fixed..... SECO 2010-00	Ea	\$43.95
35-15-1841	Tribrach Adapter, Rotating..... SECO 2020-00	Ea	\$64.95
35-15-1842	Prism HI Height Adaptor..... SECO 2071-00	Ea	\$92.95
35-15-1848	Antenna Mast Adapter (GPS) 2" threads..... SECO 2072-10	Ea	\$109.95
■ LEICA DISTO HAND HELD DISTANCE METERS			
35-35-0001	D2 016' to 197' Accuracy +/- 0.06 in.....Ea		\$229.00
35-35-0002	D330 016' to 328' Accuracy +/- 0.06 in (Tilt).....D-330	Ea	\$339.95
35-35-0003	D5 016' to 650' Accuracy +/- 0.06 in.....Ea		\$599.95
35-35-0005	D8 016' to 650' Accuracy +/- 0.06 in (Tilt).....Ea		\$795.00



30-06-1700
Stick-On Retro Reflectors
40mm and 60mm Sizes



30-06-1720
Stick-On Retro Reflector
49-Count 30mm Size



SECO Single Prism Bag 30-15-8070 SECO Triple Prism Bag 30-15-8080 SECO Jumbo Prism Bag 30-15-8081 SECO Ex-Tall Prism Bag 30-15-8130

Topcon
Tribrach w/Optical Plummet
35-05-5501



CST
Laser Plummet Tribrach
35-05-4635



SECO
Tribrach Adjuster
35-05-8072



SECO
Prism HI Height Adaptor
35-15-1842



SECO
Fixed Tribrach Adapter
35-15-1840



SECO
Rotating Tribrach Adapter
35-15-1841

Tribrach Case



OMNI 1210 Series Prisms
Metal Yoke -30/0mm Offsets
30-06-0105



OMNI 3420 Series Prism
34mm Leica Compatible



Topcon 360° Builders
Robotic Prism
05-05-0350



Topcon A-7S 360° Prism
5/8" Threaded
05-06-0604

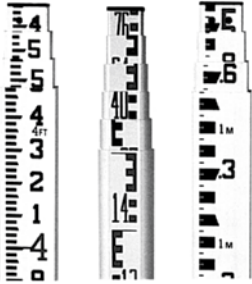
- VOLUME 17 EQUIPMENT PRICE GUIDE -

Precision Positioning Systems For Land Surveyors And General Contractors



SECO

Fiberglass Rods



LaserLine Direct
Elevation "Lenker Style"



Snap-Tote SVR Rod Level
40-07-6290



Pocket Rod
40-30-6010



HD Rod Level
40-40-6200



SECO UltraLite
Compositite Prism Poles
40-50-5131 8.5'
40-50-5132 12'
40-50-5133 15'



SECO
Carbon Fiber Prism Poles
40-50-5055 8.5' (2.5m)



Prism Mounting
Adaptor Kit
40-08-1058



SECO
Mini Stakeout
40-50-5047
1.39'



TwistLoc Detail

1' Prism Pole extension



4' Prism Pole extension



Stock#	Description	Unit	ESC Price
SECO FIBERGLASS RODS			
40-07-3040	25' SVR Series With Case	98010 Ea	\$221.95
40-07-6280	8' CR-Series No Case	92001 Ea	\$64.95
40-07-6286	16' CR-Series No Case	92041 Ea	\$126.95
40-07-6287	45' LR-Pro Rod w/Case, 10ths	90026 Ea	\$583.00
FIBERGLASS ROD ACCESSORIES			
40-07-8290	Snap-Tite SVR Rod Level	91255 Ea	\$15.95
40-08-0125	USL/SVR-25 Lock Set Complete	919125 Ea	\$36.95
40-08-1058	Prism Mounting Adaptor Kit	Ea	\$17.00
40-08-1075	USL/SVR Caliper Or Hook	Ea	\$14.25
40-08-1124	SVR Sensor Mount "Top"	91108 Ea	\$38.95
40-08-1125	SVR Sensor Mount "Side"	91128 Ea	\$67.00
40-08-4014	Carry Case for CR-Series Rod	91411 Ea	\$12.95
40-08-4015	Carry Case, 25' SVR Series	91412 Ea	\$17.95
40-08-9120	SVR, Button Set	109120/21 Set/5	\$9.95
40-08-9125	CR, Button Set	Set/4	\$8.95
RODS LEVEL			
40-40-6200	HD Rod Level	5001-10 Ea	\$19.95
PHILADELPHIA RODS			
40-17-3302	Replace Face, 13' Philly Rod	Ea	\$39.00
40-24-0002	Grade Stick, 6' PVC Round	Ea	\$28.95
40-24-0003	Grade Stick, 10' PVC Round	Ea	\$41.00
LASERLINE DIRECT ELEVATION ROD			
40-25-0003	10' Optical, 10/100ths	GR 10T Ea	\$165.00
40-25-0004	3-M Optical, Metric 1/2cm	GR 10M Ea	\$165.00
40-25-0012	10' Laser-Rail, Inches	GR 1000I Ea	\$185.00
40-25-0013	10' Laser-Rail, 10/100ths	GR1000T Ea	\$185.00
40-25-0014	10' Laser-Rail, CF/10/100ths	GR 1000 Ea	\$185.00
40-25-0015	3-M Laser-Rail, Metric 1/2cm	GR 1000M Ea	\$185.00
40-25-0016	B1, Universal Sensor Bracket	Ea	\$65.00
40-25-0017	B2, SP 1177-75 Sensor Bracket	Ea	\$90.00
40-25-0020	Laserline Carry Case 10'/3m	Ea	\$35.00
40-25-0021	4' Rod Extension 10'/3M Rod	Ea	\$65.00
LASERLINE REPLACEMENT TAPES			
40-25-0031	Tape Only, 10' 10/100ths	1000-1026 Ea	\$60.00
40-25-0032	Tape Only, 10' C/F 10/100ths	1000-1023 Ea	\$60.00
40-25-0034	Tape Only, 10' C/F Inches	1000-1036 Ea	\$60.00
40-25-0033	Tape Only, 3M C/F Metric 1/2cm	1000-1035 Ea	\$60.00
POCKET RODS			
40-30-0610	Pocket Rod, 6.5'	7301-00 Ea	\$19.95
SECO RANGE POLES & ACCESSORIES			
40-45-7140	8' 2-4' Sections w/o Case	SECO-5140-00-WOR Ea	\$66.95
40-45-7150	12' Range Pole, 3-4' Sections	SECO-5150-00-WOR Ea	\$97.95
40-45-7160	4' 1-4' Section Only	5160-00 Ea	\$36.95
40-45-8170	Range Pole Bag	SECO-8170-00 Ea	\$19.95
SECO PRISM POLES			
40-50-5131	Fiberglass "Ultralite" TLV Twistloc, 8.5'	Seco 5540-10 Ea	\$175.95
40-50-5132	Fiberglass "Ultralite" TLV Twistloc, 12'	Seco 5540-20 Ea	\$236.95
40-50-5133	Fiberglass "Ultralite" TLV Twistloc, 15'	Seco 5540-30 Ea	\$350.95
40-50-5137	Aluminum Pole Point	Seco 91605 Ea	\$21.95
40-50-5136	Topo Boot for aluminum point	Seco 91601 Ea	\$5.95
40-50-5046	TLV Twistloc 4.8'	Seco 5500-23 Ea	\$216.95
40-50-5042	TLV Twistloc, 8'	Seco 5500-11 Ea	\$175.95
40-50-5041	TLV Twistloc, 12'	Seco 5500-21 Ea	\$216.95
40-50-5040	TLV Twistloc, 15'	Seco 5500-30 Ea	\$257.95
40-50-5044	Quick Release 12'	Seco 5700-20 Ea	\$223.95
40-50-5045	Quick Release 8'	Seco 5700-10 Ea	\$175.95
40-50-5047	1' Mini Stakeout Rod	Seco 5010-00 Ea	\$81.95
40-50-5055	Robotic Carbon Fiber Prism Pole	60218 Ea	\$285.00
05-05-0621	Spacer 27mm for ATP-1-8' Robotic Rod	1001141-01 Ea	\$25.00
05-06-4519	Robotic Carbon Fiber Prism Pole f/Focus 30	5129-52 Ea	\$290.95

HD Prism Pole Bipod/Tripod Bag
40-60-8180



Universal Prism Pole Bag
40-60-8160



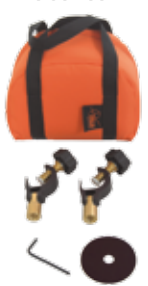
- Call Toll Free 1-800-788-3307 -

Our Low Prices Will Earn Your Business, The Great Customer Service Will Keep It!

Stock#	Description	Unit	ESC Price
■ PRISM POLE ACCESSORIES			
40-60-4000	True Plumb Prism Pole Adjuster	Ea	\$235.00
40-60-4001	Offset Pole Holder Kit.....	5198-157 Ea	\$97.95
40-60-4900	Prism Pole Adjusting Jig.....	5195-01 Ea	\$51.95
40-60-5000	Prism Pole Hard Case.....	8160-20 Ea	\$91.95
40-60-5001	Heads-Up Vial Assembly 40'	5001-20 Ea	\$82.95
40-60-5004	Rubber Pole Grip.....	5125-004 Ea	\$8.00
40-60-5080	40' Vial w/Screws	D11232 Ea	\$17.95
40-60-5084	20' Vial w/Screws	D11233 Ea	\$19.95
40-60-5085	8' Vial w/Screws	D11234 Ea	\$21.95
40-60-5110	4' Prism Pole Extension	5110-00 Ea	\$39.95
40-60-5130	1' Prism Pole Extension	5130-00 Ea	\$33.95
40-60-5131	2' Prism Pole Extension	5131-00 Ea	\$35.95
40-60-5199	Rod-Rest Aluminum Lightweight Bipod.....	5214-01 Ea	\$199.95
40-60-5200	SECO Bipod-Composite For Prism Pole.....	5219-03 Ea	\$298.95
40-60-5201	Topcon Bipod-Composite For Prism Pole	1009273-01 Ea	\$159.95
40-60-5211	SECO Bipod-Aluminum For Prism Pole.....	5217-04 Ea	\$172.95
40-60-5212	Topcon Bipod-Aluminum For Prism Pole.....	808897 Ea	\$169.95
40-60-5213	3rd-Leg For SI Bipod "Conversion Kit".....	SI-4706 Ea	\$34.99
40-60-5217	Bipod 12".....	5217-15-ABK Ea	\$53.95
40-60-5218	Tripod-Aluminum, For Prism Pole	5218-02-YEL Ea	\$190.95
40-60-5219	Prism Pole Leg Clamp For Bipod.....	5217-30 Ea	\$14.95
40-60-7191	Topo Shoe, Standard	5191-00 Ea	\$13.95
40-60-7192	Topo Shoe, Wide Base	5192-00 Ea	\$25.95
40-60-7193	Prism Pole Point "Standard".....	5190-00 Ea	\$10.95
40-60-7195	Prism Pole Point "Standard".....	SI-9012 Ea	12.95
40-60-7194	Prism Pole Point w/Replaceable Tip	5194-05 Ea	\$15.95
40-60-7197	Prism Pole Replacement Point.....	5194-03 Ea	\$2.95
40-60-8160	Bag, For Prism Pole Only.....	8160-00-ORG Ea	\$38.95
40-60-8180	Bag, For Prism Pole & Bipod Rhinotek Bottom ..	8180-20-ORG Ea	\$61.95
40-60-8181	Mini Prism Mono Pod, Without Prism.....	5216-00 Ea	\$133.95
40-55-5111	GPS Quick Release Adaptor.....	5111-00 Ea	\$61.95
40-55-5113	GPS Quick Release Tip.....	5113-012 Ea	\$26.95
■ PRISM POLE ADAPTERS			
40-55-2080	5/8" Thread To Wild Type.....	2080-00 Ea	\$22.95
40-55-2090	Wild Type To 5/8" Thread.....	2090-00 Ea	\$28.95
40-55-5180	Double-Ended 5/8"x11" Male	5180-00 Ea	\$14.95
40-55-5181	Double-Ended 5/8"x11" Female	5181-00 Ea	\$16.95



Offset Pole Holder Kit
40-60-4001



"Heads-Up" Pole Vial
40-60-5001



Bipod 12" kickstand
40-60-5217



Standard Topo Shoe
40-60-7191

Wide Base Topo Shoe
40-60-7192



Pole Point with Replaceable Tip
40-60-7194

Replacement Tip
40-60-7197



Standard Pole Point
40-60-7193



Pole Adaptor 5/8" to Wild Type
40-55-2080



Pole Adaptor Wild Type to 5/8"
40-55-2090

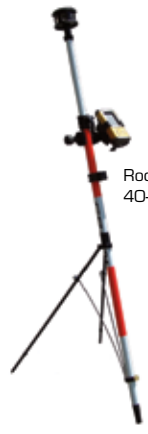


Pole Adaptor Double Female 5/8"x11
40-55-5181



Pole Adaptor Double 5/8"x11 Male
40-55-5180

40' Vial w/Screws 40-60-5080
20' Vial w/Screws 40-60-5084
8' Vial w/Screws 40-60-5085



Rod-Rest
40-60-5199

8' range Pole
40-45-7140



Aluminum Tripod For Prism Poles
40-60-5218



Mini Prism Mono Pod Kit
40-60-8181
"Prism sold separately"

ESC ENGINEERING SUPPLY COMPANY

2490 Arnold Industrial Way, Unit P, Concord, CA 94520 Sales: (800) 788-3307 Fax: (925) 680-2504

- VOLUME 17 EQUIPMENT PRICE GUIDE -

Precision Positioning Systems For Land Surveyors And General Contractors



Motorola CP-110 Portable Radios

The Features You're Looking For

With adjustable power levels and programmable function controls, the Radius CP110 provides users with the flexibility and features they need to succeed. Fully equipped with voice-activated Transmission (VOX) capabilities*, the Radius CP110 supports hands-free communications via an optional headset, so users can stay on the job at hand.

- Rugged, Durable Design
- Battery Gauge
- Extended Life NiMH Battery
- AA Battery Backup Capacity
- 121 Private Line Codes
- Large LCD Display
- Microphone Accessory Jack



Motorola CP-200 Portable Radio

The Features You're Looking For.

*The CP200TM portable two-way radio offers increased communication flexibility with features such as push-to-talk ID and selective call. Powerful audio output penetrates noisy environments, providing clear, crisp audio at any volume. A lightweight, ergonomic design makes this radio comfortable to carry and operate.

To provide the range that's best for your business, the CP200 radio is available in both 4W UHF and 5W VHF models. A range of battery choices and rapid recharging capabilities help ensure radio readiness.



Motorola Batteries:
Proven Tough!



Stock#	Description	Unit	ESC Price
■ MOTOROLA MH230R TALKABOUT RADIOS			
50-04-0100	Talkabout Radios (2-Pack).....	2-Pk	\$59.95
50-04-0101	Talkabout Speaker Mic.....	Ea	\$40.00
50-04-0110	Talkabout Earbud single-pin.....	Ea	\$11.95
50-04-0115	Talkabout Earpiece w/microphone.....	Ea	\$19.95
50-04-0120	Talkabout Headset w/Boom Microphone.....	Ea	\$19.95
■ MOTOROLA CP110 RADIOS, 2-Watt, 2-Chan. VHF			
50-05-0100	CP110, VHF 2W 2CH H96KCC9AA2AA.....	Ea	\$267.00
50-05-0105	CP110 Battery Pack Li-Ion 2200 mAh RLN6351A.....	Ea	\$79.95
50-05-0106	CP110 Battery Pack, Alkaline (Holds AA Batteries).....	Ea	45.00
50-05-0110	CP110 Headset w/Swivel Boom Mic.....	Ea	\$57.00
50-05-0115	CP110 Remote Speaker Microphone PMMN4013A.....	Ea	\$73.50
50-05-0120	CP110 Hard Leather Carry Holster RLN6302A.....	Ea	\$55.00
■ MOTOROLA CP200 RADIOS			
50-07-0200	CP200 Radio VHF 5-Watt 4-Chan.....	Ea	\$394.95
50-07-0210	CP200 10hr Desktop Charger.....	Ea	\$27.00
50-07-0215	CP200 90-Minute Charger Base Only CP200.....	Ea	\$49.00
50-07-0220	CP200 90 Minute Rapid Charger.....	Ea	\$20.00
50-07-0225	CP200 NIMH Battery 1400mah NNTN4851.....	Ea	\$63.00
50-07-0230	CP200 Speaker Microphone.....	Ea	\$73.50
50-07-0235	CP200 Belt Clip.....	Ea	\$6.00
50-07-0240	CP200 Nylon Case.....	Ea	\$24.00
50-07-0245	CP200 VHF Antenna.....	Ea	\$12.95
■ MOTOROLA RADIO BATTERIES			
50-15-5414	Battery Pack, HT-600 (H).....	Ea	\$75.00
50-15-7434	Battery Pack, HT90 500mAH.....	Ea	\$63.00
50-15-8148	Battery Pack, P110.....	Ea	\$83.00
50-07-0225	CP200 NIMH Battery 1400mah NNTN4851.....	Ea	\$63.00
50-05-0105	Battery Pack, CP100, 1500mAh NTN8971B.....	Ea	\$79.95
50-15-9018	SP50, 1-5W 7.5v HNN9018AR.....	Ea	\$45.00
50-15-9027	P50, 5W 11.25v HNN9027A.....	Ea	\$53.00
50-15-9044	SP10/21/P50-SP50, 2w HNN9044AR.....	Ea	\$35.00
50-15-9049	Battery Pack, P1225 1200mAh HNN9049A.....	Ea	\$83.00
■ REMOTE SPEAKER MICS. HEADSETS ECT.			
50-07-0230	Speaker Microphone, SP50/P1225/CP200.....	Ea	\$73.50
50-07-0235	SP21/50/P1225/CP200 Belt Clip.....	Ea	\$6.00
50-05-0110	CP100 Headset w/Swivel Boom Microphone.....	Ea	\$57.00
50-05-0115	Speaker Microphone, CP100/SP21/SP10.....	Ea	\$73.50

- Call Toll Free 1-800-788-3307 -

Our Low Prices Will Earn Your Business, The Great Customer Service Will Keep It!

Stock#	Description	Unit	ESC Price
■ DUNHAM & MORROW MAGNETIC LOCATORS			
45-05-0060	DML-2000XR HC Magnetic Locator with Hard Case	Ea	\$685.00
45-05-0061	DML-2000XR SC Magnetic Locator with Soft Case	Ea	\$638.95
■ DUNHAM & MORROW EXTENDED RANGE "METERED"			
45-05-0065	DML-2000XRM HC Magnetic Locator with Hard Case	Ea	\$719.95
45-05-0066	DML-2000XRM SC Magnetic Locator with Soft Case	Ea	\$688.95
■ SCHONSTEDT METAL LOCATORS			
45-05-0050	GA-72Cd, Locator W/Hard Case	Ea	\$1,000.00
45-05-0051	Mac-51BX, Locator W/Hard Case	Ea	\$2,495.00
45-05-0052	GA-52Cx, Locator W/Hard Case	Ea	\$899.95
■ CST MAGNETIC LOCATORS			
45-05-0062	Magna-Trak 200 LCD With Audio	Ea	\$695.00
45-05-0063	Magna-Trak 202 LCD With Audio	Ea	\$749.00
■ SUBSURFACE MAGNETIC LOCATORS			
45-05-0074	ML-1 Subsurface Mag-Locator "Audio Only"	ML-1 Ea	\$795.00
45-05-0075	ML-1M Subsurface Mag-Locator "Audio + Meter"	ML-1M Ea	\$845.00

Dunham & Morrow

DML-2000XR Locator w/Hard Case
45-05-0060

Lifetime Warranty, Made In The USA!



Simply the best locator for finding buried iron or steel items including survey markers, PK nails, underground utilities, and manhole covers just to name a few.

Backed by a full LIFETIME warranty, Dunham & Morrow Magnetic Locators work better, last longer and cost less. Try one and we think you'll agree they're the ideal choice for Surveyors, Gas and Water pipeline professionals, Hydrologists, Construction Contractors, Well Drillers, virtually any professional who needs to pinpoint buried ferrous metal targets.

SubSurface Instruments ML-1 & ML-1M MAGNETIC LOCATORS



"LIFETIME WARRANTY"

Magnetic Locators



SCHONSTEDT
GA-52Cx Magnetic Locator
45-05-0052

SCHONSTEDT
GA-72Cd Metered Locator
45-05-0055



SCHONSTEDT
Mac-51BX Magnetic and
Cable Locator
45-05-0051



Magna-Trak 200 Series Magnetic Locator

Features:

- Large LCD Display w/Digital Readout
- Segmented Battery Level Indicator
- Erase Function (MT202 Only) Blocks Out Interference
- Sealed Membrane Switch
- Enhanced Magnetic Speaker
- Lightweight (only 3lbs.)
- 100% Water Resistant
- Padded Cordura Carry Case

- VOLUME 17 EQUIPMENT PRICE GUIDE -

Precision Positioning Systems For Land Surveyors And General Contractors

Surveying Accessories



David White 2-1/2X Hand Level
60-06-0575

Kuker Ranken 2X Hand Level
60-06-0572



Abney Level, Sokkia 8047-15
60-07-4715



Topographic Abney Level
60-07-4745



Suunto Compass / Clinometer
60-25-2520 60-25-2575

Rubber Cover
60-25-2525

Leather Case
60-25-7011



Navigator Compass/Clinometers

Surveyors Pocket
Thermometer
60-45-0610



Asphalt Thermometer
60-45-0675

Pocket Altimeter
60-40-1200

Pocket Digi-Thermometer
60-45-0602



Brunton Transit w/Leather Case
60-20-0001



Hand Tally Counter
60-60-9211



Double Right Angle Prism
60-10-6220

Stock#	Description	Unit	ESC Price
■ KUKER RANKEN BRASS HAND LEVELS			
60-06-0572	572S Brass Hand Level KR 2x Stadia 5-7"	Ea	\$124.00
60-06-0573	Hand Level Case For KR All	Ea	\$12.40
60-06-0573	Hand Level David White, 2-1/2X w/Stadia	Ea	\$85.00
■ SECO HAND LEVELS			
60-06-0801	Seco 4300 2X K-R Style.....	Ea	\$99.95
■ ABNEY HAND LEVELS			
60-07-4715	Abney Level W/Cli. 8047-15.....	Ea	\$109.00
60-07-4745	Topo Abney Level 8047-45	Ea	\$195.00
■ RIGHT ANGLE PRISMS			
60-10-6220	Double Right Angle Prism	SECO 4900-00 Ea	\$89.95
■ COMPASSES AND CLINOMETERS			
60-20-0001	Brunton Transit, Azimuths 0-360.....	Ea	\$265.00
60-20-0002	Brunton Transit, Quads 0-90	Ea	\$265.00
60-25-2505	Navigator Compass/Cli. AZ.....	Ea	\$45.95
60-25-2506	Navigator Compass/Cli. Quads.....	Ea	\$45.95
60-25-2510	Compass-KB-20, Plastic Body.....	Ea	\$59.95
60-25-2520	Compass-KB-14, Aluminum Body.....	Ea	\$149.95
60-25-2525	Rubber Cover, For KB-14.....	Ea	\$14.67
60-25-2575	PM5 Clinometer, Degree/Percent	Ea	\$169.44
60-25-7009	Case-Skylon, Comp-Clinometer.....	Ea	\$6.95
60-25-7011	Case-Leather, Compasses & Clinometer.....	Ea	\$9.95
■ POCKET ALTIMETERS			
60-40			
60-40-1200	Brunton Altimeter/Barometer 100'-13000	43310 Ea	\$65.95
60-40-1201	Altimeter Case, Leather.....	Ea	\$21.99
■ THERMOMETERS & PSYCHROMETER			
60-45-0602	Pocket Digi-Thermometer D302.....	Ea	\$23.50
60-45-0610	Surveyors Pocket Thermometer.....	Ea	\$11.95
60-45-0650	Pocket Digi-Thermometer D450.....	Ea	\$47.50
60-45-0675	Asphalt Thermometer 1" QPP.....	Ea	\$45.25
60-45-0705	Concrete/Asphalt Thermometer H.....	Ea	\$50.75
60-45-0800	Surface Thermometer, Dual Dial.....	Ea	\$42.50
■ TALLY COUNTERS			
60-60-9211	Tally Counter, Hand	Ea	\$10.95
■ POCKET TAPE ACCESSORIES			
65-00-0460	Grip Tip Tape Tip	Ea	\$0.99
65-00-0664	Pocket Tape Holder, 16-30'.....	Ea	\$8.95

- Call Toll Free 1-800-788-3307 -

Our Low Prices Will Earn Your Business, The Great Customer Service Will Keep It!

Stock#	Description	Unit	ESC Price
POCKET TAPES			
65-05-0005	12' 10ths/Inches	Luf-HV1312D Ea	\$14.95
65-05-0007	12' Metric	Luf-HV1043DM Ea	\$14.95
65-05-0022	25' 10ths/Inches	1425D Ea	\$15.95
65-05-0023	25' 10ths/Metric	Luf-HV1048DM Ea	\$15.95
65-05-0024	25' 10ths/Inches XL-Series Super Wide Eng.	Ea	\$16.99
65-05-0025	25' Pro Series-3000.....	PS3425D Ea	\$18.95
65-05-0026	25' Komelon Monster MagGrip Tape.....	71251E Ea	\$23.95
65-05-0033	33' Chrome Case	Lufkin 2133D Ea	\$23.95
65-05-0034	33' 10ths/Metric	Luf HV1433DM Ea	\$18.95
65-05-0036	Belt clip holder for pocket tape.....	Lufkin #462 Ea	\$2.95
65-05-0037	Leather pocket tape holster.....	Lufkin #464 Ea	\$6.00
OPEN REEL FIBERGLASS TAPES			
65-10-0010	Fiberglass Tape 50' 10ths/Met.....	Ea	\$24.95
65-10-0020	Fiberglass Tape 100' 10ths/Met.....	Ea	\$39.95
65-10-0040	Fiberglass Tape 200' 10ths/Met.....	Ea	\$79.99
65-10-0050	Fiberglass Tape 300' 10ths/Met.....	Ea	\$99.95
METAL CASE CLOSED REEL TAPES			
65-15-8100	Metal Case Steel Tape,100'Inch	Ea	\$21.95
K-LINE COATED "STEEL" TAPES			
65-20-8210	K-Line Nylon Clad 100' Tape	Ea	\$52.95
65-20-8220	K-Line Nylon Clad 200' Tape	Ea	\$84.95
65-20-8230	K-Line Nylon Clad 300' Tape	Ea	\$99.95
FOLDING RULERS			
65-35-1066	Folding Ruler 6' HD	(1066D) Ea	\$19.95
65-35-1067	Folding Ruler 6' HD Metric.....	(1066DM) Ea	\$19.95
65-35-8075	6.5' Jumbo Ruler	Sokkia Ea	\$78.95
BMI STAINLESS STEEL TAPES			
65-50-1150	Frame Tape,1/2"x100' Stainless	Ea	\$124.98
65-50-1275	Frame Tape,1/2"x200' Stainless	Ea	\$206.95
65-50-1375	Frame Tape,1/2"x330',Stainless	Ea	\$264.95
CHAIN PARTS & ACCESSORIES			
65-60-0085	Tape Tension Handle, 30 Lb.	Ea	\$144.95
65-60-0086	Tape Tension Handle, 50 Lb.	Ea	\$228.95
65-60-0584	Tape Clamp Handle	Ea	\$37.95
95-95-2183	Chaining Pins, 11 Count.....	2183-00 Ea	\$25.95
POCKET RODS			
40-30-0610	Pocket Rod, 6.5'	7301-00 Ea	\$19.95

Measuring Tapes and Chains



Lufkin
12' Hi-Viz Series
65-05-0012



Lufkin
12' Hi-Viz Series Metric
65-05-0012



Lufkin
25' Pro Series 3000
65-05-0025



Lufkin
33' Metric-Decimal
Plastic Case
65-05-0034



Lufkin
33' Chrome Case Lufkin
2133D
65-05-0033



Komelon Magnetic
25' Monster MagGrip
65-05-0026



Lufkin
Ultra-Glass Closed Reel
Fiberglass Tape



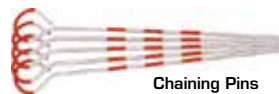
Keson
K-Line Plastic Coated Steel Tapes
100' 200' 300' Lengths



Keson
Open Reel Fiberglass Tape
50' 100' 165' 200' 300'



Pocket Rod
40-30-6010



Chaining Pins
95-95-2183

Quality Folding Rulers

Lufkin
6' Folding Engineers Tapes
10ths-Inches/Decimal-10ths



Sokkia
6.5' Jumbo
Folding Ruler



BMI Stainless Steel Tapes
1/2" X 100', 200' 330'
Graduated in Feet. 10ths. 100ths.

ESC ENGINEERING SUPPLY COMPANY

2490 Arnold Industrial Way, Unit P, Concord, CA 94520 Sales: (800) 788-3307 Fax: (925) 680-2504

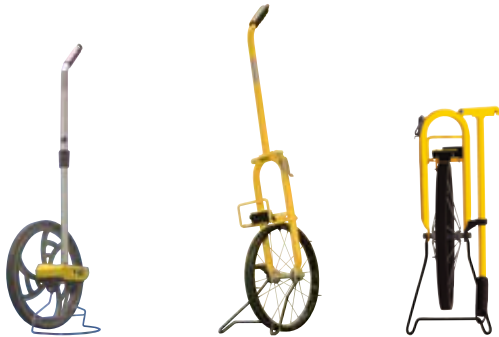
- VOLUME 17 EQUIPMENT PRICE GUIDE -

Precision Positioning Systems For Land Surveyors And General Contractors

Keson Digital Measuring Wheel



Keson "Tuff" Measuring Wheels



Plumb Bobs and Accessories



Paper and Plastic Targets



Gammon Reels and String



Stock#	Description	Unit	ESC Price
■ KESON MEASURING WHEELS			
65-70-0012	RR-112, 4" Wheel.....	Ea	\$44.95
65-70-0013	RR-182 Twin, 2-4" Wheels.....	Ea	\$66.95
65-70-0020	MP-401, 15-1/2" Wheel.....	Ea	\$167.95
65-70-0030	RR-30, 12-1/2" Wheel.....	Ea	\$115.95
65-70-0050	MP-301, 11-1/2" Wheel.....	Ea	\$144.95
65-70-6415	MP-401E 15-1/2" Digital Measuring Wheel.....	Ea	\$199.99
■ PLUMB BOBS			
70-05-0010	10 Oz. Plumb Bob.....	Ea	\$15.00
70-05-0012	12 Oz. Plumb Bob.....	Ea	\$16.00
70-05-0014	14 Oz. Plumb Bob.....	Ea	\$17.00
70-05-0016	16 Oz. Plumb Bob.....	Ea	\$18.95
70-05-0018	18 Oz. Plumb Bob.....	Ea	\$19.95
70-05-0024	24 Oz. Plumb Bob.....	Ea	\$25.95
70-05-0032	32 Oz. Plumb Bob.....	Ea	\$33.95
70-05-0048	48 Oz. Plumb Bob.....	Ea	\$120.00
70-10 ■ SCABBARDS			
70-10-0812	Scabbard For Plumb Bob 8-10oz.....	Ea	\$7.95
70-10-1014	Scabbard For Plumb Bob 14-16oz.....	Ea	\$8.95
70-10-1558	Scabbard For Plumb Bob 18-24oz.....	Ea	\$9.95
70-10-1618	Scabbard For Plumb Bob 32oz.....	Ea	\$9.95
■ TARGETS			
70-15-0020	Red & White Plastic Target.....	Ea	\$1.50
70-15-0025	Translucent Plastic Target.....	Ea	\$1.60
70-15-0040	Q/Stick Targets, 2x3.5" 25/Pk.....	Ea	\$3.50
70-15-0050	Q/Stick Target, 4"x 4" Each.....	Ea	\$1.50
■ PLUMB BOB POINTS & CAPS			
70-20-0090	Plumb Bob Point.....	Ea	\$1.95
70-20-0093	Plumb Bob Cap.....	Ea	\$2.95
■ GAMMON REELS & STRING			
70-25-0001	Gammon Reel, 6'.....	Ea	\$14.50
70-25-0012	Gammon Reel, 12'.....	Ea	\$18.75
70-25-0020	Gammon Reel String.....	Ea	\$8.25

- Call Toll Free 1-800-788-3307 -

Our Low Prices Will Earn Your Business, The Great Customer Service Will Keep It!

Stock#	Description	Unit	ESC Price
■ HAND TOOLS			
70-30-0004	Shovel, "Mini" 18" Handle.....	Ea	\$15.95
70-30-0005	Shovel, Round Point.....	Ea	\$23.95
70-30-0006	Digging Bar, 14lbs 60" Long.....	Ea	\$26.95
70-30-0016	Geology Pick, 16oz Plumb.....	Ea	\$26.95
70-30-0020	Sheath, For Camp Axe.....	Ea	\$23.50
70-30-0021	Hunters Belt Axe w/Sheath.....	Ea	\$24.95
70-30-0028	Sledge Hammer 2Lb 16".....	Ea	\$9.95
70-30-0031	Sledge Hammer 3Lb 16".....	Ea	\$11.99
70-30-0036	Sledge Hammer 4Lb 16".....	Ea	\$14.95
70-30-0040	Sledge Hammer 8Lb.....	Ea	\$23.95
70-30-0042	Sledge Hammer 10Lb.....	Ea	\$28.95
70-30-0050	Sledge Hammer 12Lb.....	Ea	\$36.95
70-30-0019	Replacement Handle, 15" Hatchet.....	Ea	\$14.95

■ TOOL POUCHES & LEVELS			
70-30-0055	Tool Pouch, 2-Tier 8-Pocket.....	Ea	\$31.95
70-30-0056	SECO Surveyors Tool Pouch.....	Ea	\$44.95
70-30-0060	Tool Pouch, 3-Tier 9-Pocket.....	Ea	\$36.95
70-30-0102	Leather Work Belt, 1-3/4" Wide.....	Ea	\$10.95
70-30-0103	Leather Work Belt, 2-3/4" Wide.....	Ea	\$21.95
70-30-0117	Smart Level, 24".....	Ea	\$168.95
70-30-0118	Soft Case For Smart Level, 24".....	Ea	\$23.95
70-30-0113	Smart Level, 48" With soft Case.....	Ea	\$209.95
70-30-0121	Bull's Eye Surface Level.....	Ea	\$3.50
70-30-0125	Torpedo Level 8" Magnetic Edge.....	Ea	\$14.25
70-30-0127	Universal Level, Angles.....	Ea	\$22.00

■ MACHETES & BRUSH AXES			
70-30-0130	Machete, 22" With Hand Guard.....	Ea	\$29.95
70-30-0135	Leather Sheath, 22" Machete.....	Ea	\$25.00
70-30-0155	Bush Hook (Single).....	Ea	\$67.95
70-30-0160	Replacement Handle For Bush Hook.....	Ea	\$9.00
70-30-0165	Sandvik Brush Axe.....	Ea	\$36.95
70-30-0168	Sandvik Brush Axe Holster.....	Ea	\$10.95
70-30-0170	Sandvik Brush Axe-Replace Handle.....	Ea	\$9.95
70-30-0175	Sandvik Brush Axe, Replacement Blade.....	Ea	\$14.95

■ CONCRETE SCRIBES			
70-30-0194	Concrete Scribe, w/ Magnet.....	Ea	\$6.95
70-30-0195	Concrete Scribe, Giant.....	Ea	\$3.95
70-30-0196	Concrete Scribe, Premium.....	Ea	\$3.95
70-30-0197	Concrete Scribe, Premium.....	Ea	\$3.95
70-30-0197A	Scribe Replacement Point 2 Pack.....	2-Pk	\$4.00

■ CHISELS, GADS & PUNCHES			
70-30-0200	Chisel, w/Guard, 2-1/4" Cut.....	Ea	\$14.95
70-30-0207	Gad, w/Guard Bull Point 12" x 3/4".....	Ea	\$16.50
70-30-0240	Star Drill w/Guard 12"x 7/8".....	Ea	\$9.45
70-30-0252	Center Punch, 6" Long.....	Ea	\$7.50

■ MANHOLE PULLERS & SOIL PROBES			
70-30-0300	Manhole Cover Puller.....	4432DP Ea	\$35.00
70-30-0305	Soil Probe, 48" Fiberglass.....	Ea	\$32.00
70-30-0306	Soil Probe, 48" Steel.....	Ea	\$46.50

Hand Tools



- VOLUME 17 EQUIPMENT PRICE GUIDE -

Precision Positioning Systems For Land Surveyors And General Contractors

Drafting Accessories



Pocket Stereo Viewer



Pocket Magnifiers



Scale Master II
Scale Master Classic



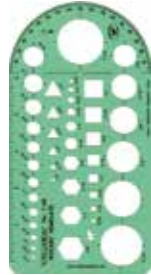
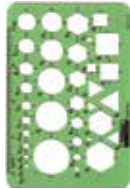
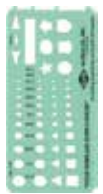
PC Interface For Scale Master II
Use with Windows 95, 98,
2000, ME and XP

All Purpose **R-16**
Pocket Template

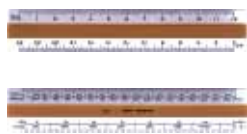
Pocket Template **T-48**

Small Shapes **T-41**
Pocket Template

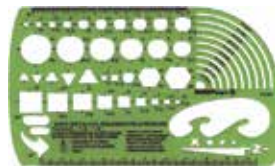
Pocket Pal **R-50**



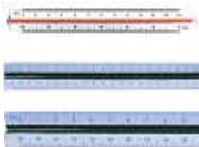
6" Flat Scales
For Engineers and
Architects



Surveyor's Template **TD-654**



4" 6" 12" Triangular Scales
For Engineers and Architects



6" 8" 10" Fluorescent
Triangles,
45°/90° 30°/60°

Stock#	Description	Unit	ESC Price
■ STEREOSCOPES			
75-15-1154	Pocket Stereo Viewer, 2x.....	Ea	\$56.95
■ POCKET MAGNIFIERS			
75-20-7028	2-Lens, 4x 8x.....	Ea	\$12.95
75-20-7030	3-Lens, 5x 10x 15x.....	Ea	\$18.95
■ SCALES ENGINEERS/ARCHITECTS			
75-25-0010	Scale Master II.....	Ea	\$99.95
75-25-0011	PC Kit Only For Scale Master II.....	Ea	\$79.95
75-25-0015	Scale Master Classic-6020.....	Ea	\$79.95
75-30-0001	Scale 4" Triangle, Plastic.....	Ea	\$7.75
75-30-0002	Scale 6" Triangle, Plastic.....	Ea	\$8.50
75-30-0003	Scale 12" Triangle, Plastic.....	Ea	\$8.95
75-30-0004	Scale 6" Flat, Plastic.....	Ea	\$6.50
■ TEMPLATES, PROTRACTORS, TRIANGLES			
75-35-0041	T-41 Small Shapes Template.....	Ea	\$3.00
75-35-0046	R-16 All Purpose Template.....	Ea	\$9.00
75-35-0048	T-48 Pocket Template.....	Ea	\$4.50
75-35-0050	R-50 Pocket Pal Template.....	Ea	\$8.00
75-35-0054	TD-654 Surveyors Template.....	Ea	\$9.95
75-35-0160	Protractor Half-Cir 4" P-4S.....	Ea	\$3.60
75-35-0180	Protractor Half-Cir 6" P476.....	Ea	\$3.75
75-35-0234	Protractor Full-Cir 4" P234.....	Ea	\$3.50
75-35-0363	Protractor Full-Cir 6" P236.....	Ea	\$3.75
75-35-3604	30/60° 4" Fl. Triangle.....	Ea	\$1.75
75-35-3606	30/60° 6" Fl. Triangle.....	Ea	\$2.05
75-35-3608	30/60° 8" Fl. Triangle.....	Ea	\$2.80
75-35-3610	30/60° 10" Fl. Triangle.....	Ea	\$3.50
75-35-4504	45/90° 4" Fl. Triangle.....	Ea	\$2.00
75-35-4506	45/90° 6" Fl. Triangle.....	Ea	\$2.75
75-35-4508	45/90° 8" Fl. Triangle.....	Ea	\$3.80
75-35-4510	45/90° 10" Fl. Triangle.....	Ea	\$4.85
75-35-9001	Aluminum Sheet Holder 8.5x12".....	Ea	\$28.95
75-35-9002	Loose Sheet Holder Aluminum 14.....	Ea	\$32.95
75-35-9010	Clipboard, Letter 8.5x11".....	Ea	\$3.75
75-35-9011	Clipboard, Legle 8.5x11".....	Ea	\$4.00
■ MECHANICAL PENCILS			
75-40-0000	Staedtler Drafting Pencil, 2mm 780BK.....	Ea	\$7.95
75-40-0002	0.5mm Mechanical Pencil, Pentel P205-A.....	Ea	\$4.95
75-40-0003	0.7mm Mechanical Pencil, Pentel P207-C.....	Ea	\$4.95
75-40-0004	0.9mm Mechanical Pencil, Pentel P209-G.....	Ea	\$4.95
75-40-0007	2.0mm Lead refill HB.....	501813-HB Ea	\$3.95
75-40-0005	Eraser Refills, Z2-1.....	3-Pk	\$1.95
75-40-0006	Replacement Lead, All.....	12-Tube	\$2.00

Staedtler 2mm
Drafting Pencil



Lead Refills
.5mm HB
.7mm HB
.9mm HB

Pentel
P205-A Black .5mm
P207-C Blue .7mm
P209-G Yellow .9mm

- Call Toll Free 1-800-788-3307 -

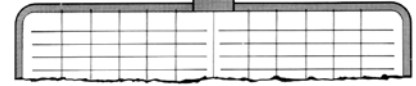
Our Low Prices Will Earn Your Business, The Great Customer Service Will Keep It!

Stock#	Description	Unit	ESC Price
■ ELAN FIELD BOOKS 160-PAGE			
80-10-0400	400-Level Book, E64-64M Small.....	Ea	\$11.00
80-10-0407	407-Field Book, E64-4X4.....	Ea	\$11.50
80-10-0408	408-Mining Transit Book, E64-8X8.....	Ea	\$11.50
80-10-0410	410-Cross Section Book, E64x10X10.....	Ea	\$11.50
80-10-0411	411-Cross Section Book, E10X10K Large.....	Ea	\$17.35
80-10-0415	415-Level Book, E64-64 Large.....	Ea	\$11.50
80-10-0416	416-Field Book, E64-8X4.....	Ea	\$11.50
80-10-0430	430-Soft Cover Book, E64-8X4S 32-Sheets "sewn".....	Ea	\$3.50
■ ELAN FIELD BOOK PAPER/BINDERS			
80-15-0435	445-Level Paper 64X64 50-Pg.....	AA-325-Level Ea	\$3.95
80-15-0436	446-E64 8X4 50-Pg.....	AD-325-Field Ea	\$3.95
80-15-0437	447-E64 4X4 50-Pg.....	Ea	\$3.95
■ MISC.. FIELD BOOKS AND BINDERS			
80-20-0324	ELAN Wire-Ring Field Book 50pg.....	Ea	\$3.50
80-20-0325	ELAN Small Ring Binder E325.....	Ea	\$15.00
80-20-0327	ELAN "Filler" Paper E64 8X8 50pg.....	Ea	\$3.75
80-20-0328	ELAN "Filler" Paper E64 8X4 50pg.....	Ea	\$3.95
80-20-0329	ELAN Level "Filler" Paper 64X64 50pg.....	Ea	\$3.95
■ "RITE IN THE RAIN" PRODUCTS			
80-25-5037	All-Weather Pen, Waterproof.....	#37 Ea	\$7.95
80-25-5100	135-3X5" Pocket Note Book.....	100-pg Ea	\$3.95
80-25-5110	146-4X6" Pocket Note Book.....	100-pg Ea	\$4.95
80-25-5300	300-Bnd Book: Transit.....	156-pg Ea	\$17.95
80-25-5301	310-Bnd Book: Level.....	156-pg Ea	\$17.95
80-25-5400	350-Bnd Book: Field.....	156-Pg Ea	\$17.95
80-25-5401	301-Note Book: Transit.....	48-pg Ea	\$3.95
80-25-5402	311-Note Book: Level.....	48-pg Ea	\$3.95
80-25-5403	302-Loose Leaf: Transit.....	4-5/8 X 7" 100-pg Pk/100	\$12.95
80-25-5405	314-Loose Leaf: Level.....	4-6-1/2" 100-pg Pk/100	\$12.95
80-25-5410	312-Loose Leaf: Level.....	4-5/8 X 7" 100-pg Pk/100	\$12.95
80-25-5415	342-Loose Leaf: Cruiser.....	4-5/8 X 7" 100-pg Pk/100	\$12.95
80-25-5420	352-Loose Leaf: Field.....	4-5/8 X 7" 100-pg Pk/100	\$11.95

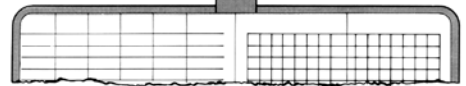


Field Books and Paper By ELAN Publishing

Level Book #E64-64M
Orange vinyl cover, 80 pages 4-1/8" x 6-1/2"



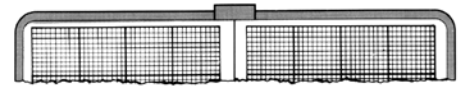
Field Book #E64-4X4
Orange vinyl cover, 80 pages 4-5/8" x 7-1/4"



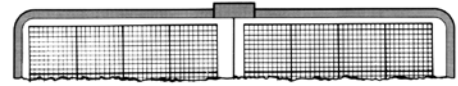
Mining Transit Book E64-8X8
Orange vinyl cover, 80 pages 4-5/8" x 7-1/4"



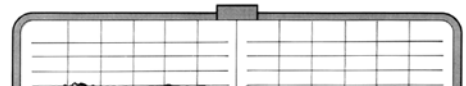
Cross Section Book #E64-10X10
Orange vinyl cover, 80 pages 4-5/8" x 7-1/4"



Cross Section Book #E10X10K
Orange vinyl cover, 80 pages 6-1/2" x 8-1/2"



Level Book #E64-64
Orange vinyl cover, 80 pages 4-5/8" x 7-1/4"



Field Book #E64-8X4
Orange vinyl cover, 80 pages 4-5/8" x 7-1/4"



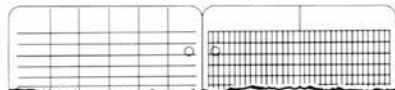
"All Weather" Waterproof Pen
80-25-5037



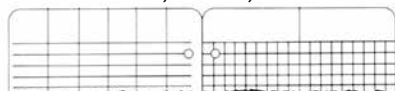
Level Book Filler Sheet
4-1/2" x 7-1/4"



Field or Transit Book Filler Sheet
4-1/2" x 7-1/4"



Field Book Filler Sheet
4-1/2" x 7-1/4"



ELAN
Field Books



Rite In The Rain
All
Weather
Field Books

Precision Positioning Systems For Land Surveyors And General Contractors



SUV Safety Vests ANSI Compliant



SECO 8068 Class-2 Safety Vest
Available in F/Orange and F/Yellow



SECO 8265 Class-2
Safety Vest/Cal-Trans
Available in F/Orange
and F/Yellow



SECO 8365 Class-3
Safety Vest/Cal-Trans
Available in F/Orange
and F/Yellow



Economy Surveyors Vests 85-12-0025



Hydrowick Lite Vest
85-12-0030



NEW!
SECO 8063 Climate Control
Safety Vest, Available in
F/Orange and F/Yellow



Ultra-Flex Knee Pads
85-05-0004



25 Unit First Aid Kit
85-05-6027

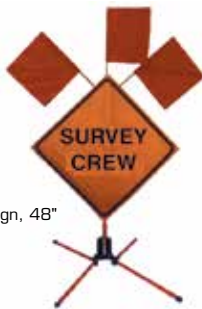


12" 18" & 28" Traffic Cones
85-15-36

Ratchet Style Hard Hat
85-05-0007



Stop/Slow Paddles
85-20-5152



Safety Sign, 48"



"Maklita" Magnetic
LED Strobe Light
85-05-0001



Barricade Tape 1000'
85-05-0006

TEC LABS

Oak-N-Ivy Cleanser
Insect Repellent
PowerDEET25
Solarepel Sunscreen 25 SPF



Foam Ear Plugs
85-05-0002



Stock#	Description	Unit	ESC Price
■ SECO 8068 CLASS II LIGHTWEIGHT SAFETY VESTS			
85-07-6846-O	Size 46 8068 Series Vest F/Orange, "Medium"	Ea	\$96.95
85-07-6846-Y	Size 46 8068 Series Vest F/Yellow, "Medium"	Ea	\$96.95
85-07-6850-O	Size 50 8068 Series Vest F/Orange, "Large"	Ea	\$96.95
85-07-6850-Y	Size 50 8068 Series Vest F/Yellow, "Large"	Ea	\$96.95
85-07-6854-O	Size 54 8068 Series Vest F/Orange, "X-Large"	Ea	\$96.95
85-07-6854-Y	Size 54 8068 Series Vest F/Yellow, "X-Large"	Ea	\$96.95
85-07-6858-O	Size 58 8068 Series Vest F/Orange, "2 X-Large"	Ea	\$96.95
85-07-6858-Y	Size 58 8068 Series Vest F/Yellow, "2 X-Large"	Ea	\$96.95
■ SECO 8063 CLASS II CLIMATE CONTROL SAFETY VESTS			
85-08-6346-O	Size 46 8063 Series Vest F/Orange, "Medium"	Ea	\$104.95
85-08-6346-Y	Size 46 8063 Series Vest F/Yellow, "Medium"	Ea	\$104.95
85-08-6350-O	Size 50 8063 Series Vest F/Orange, "Large"	Ea	\$104.95
85-08-6350-Y	Size 50 8063 Series Vest F/Yellow, "Large"	Ea	\$104.95
85-08-6354-O	Size 54 8063 Series Vest F/Orange, "X-Large"	Ea	\$104.95
85-08-6354-Y	Size 54 8063 Series Vest F/Yellow, "X-Large"	Ea	\$104.95
85-08-6358-O	Size 58 8063 Series Vest F/Orange, "2 X-Large"	Ea	\$104.95
85-08-6358-Y	Size 58 8063 Series Vest F/Yellow, "2 X-Large"	Ea	\$104.95
■ SECO 8265 CLASS II CAL-TRANS SPEC SAFETY VESTS			
85-10-8246-O	Size 46 8265 Series Vest F/Orange, "Medium"	Ea	\$111.95
85-10-8246-Y	Size 46 8265 Series Vest F/Yellow, "Medium"	Ea	\$111.95
85-10-8250-O	Size 50 8265 Series Vest F/Orange, "Large"	Ea	\$111.95
85-10-8250-Y	Size 50 8265 Series Vest F/Yellow, "Large"	Ea	\$111.95
85-10-8254-O	Size 54 8265 Series Vest F/Orange, "X-Large"	Ea	\$111.95
85-10-8254-Y	Size 54 8265 Series Vest F/Yellow, "X-Large"	Ea	\$111.95
85-10-8258-O	Size 58 8265 Series Vest F/Orange, "2 X-Large"	Ea	\$111.95
85-10-8258-Y	Size 58 8265 Series Vest F/Yellow, "2 X-Large"	Ea	\$111.95
■ SECO 8365 CLASS III CAL-TRANS SPEC SAFETY VESTS			
85-11-8346-O	Size 46 8365 Series Vest F/Orange, "Medium"	Ea	\$126.95
85-11-8346-Y	Size 46 8365 Series Vest F/Yellow, "Medium"	Ea	\$126.95
85-11-8350-O	Size 50 8365 Series Vest F/Orange, "Large"	Ea	\$126.95
85-11-8350-Y	Size 50 8365 Series Vest F/Yellow, "Large"	Ea	\$126.95
85-11-8354-O	Size 54 8365 Series Vest F/Orange, "X-Large"	Ea	\$126.95
85-11-8354-Y	Size 54 8365 Series Vest F/Yellow, "X-Large"	Ea	\$126.95
85-11-8358-O	Size 58 8365 Series Vest F/Orange, "2 X-Large"	Ea	\$126.95
85-11-8358-Y	Size 58 8365 Series Vest F/Yellow, "2 X-Large"	Ea	\$126.95
■ ML KISHIGO SAFETY VESTS			
85-12-0025	Surveyors Economy Vest Orange.....	FPC-B1-88 Ea	\$26.95
85-12-0026	Hydrowick-Lite Vest, Lime.....	1197 Ea	\$26.95
85-12-0027	Hydrowick-Lite Vest, Orange.....	1198 Ea	\$26.95
■ SAFETY EQUIPMENT			
85-05-0001	Maklita Magnetic "LED" Strobe	91265 Ea	\$56.95
85-05-0002	Ear Plugs, Foam 200 Pairs Box	Case/200	\$30.00
85-05-0002	Ear Plugs, Foam 200 Pairs Box	Ea	\$0.20
85-05-0004	Wind "N" Go Flashlight.....	Ea	\$12.95
85-05-0004	Knee Pads, Ultra Flex II	Pr	\$23.95
85-05-0006	"Caution" Tape 1000' Roll	Ea	\$15.49
85-05-0007	Hard Hat W/Ratchet Suspension	Ea	\$20.48
85-05-0008	Hard Hat Full-Brim W/Ratchet Suspension	Ea	\$19.95
■ SAFETY GLASSES			
85-05-0030	Safety Glasses, Clear Wrap Around	Ea	\$2.25
85-05-0035	Safety Glasses, Grey Wrap Around	Ea	\$2.25
85-05-0040	Safety Glasses, Clear Dolphin	Ea	\$3.75
85-05-0045	Safety Glasses, Grey Dolphin	Ea	\$3.75
■ SAFETY SUPPLIES			
85-05-6027	First Aid Kit, 25 Persons.....	Ea	\$38.50
85-05-6030	Snake Bite & Sting Kit	Ea	\$25.00
85-05-6032	Tecnu Poison Oak Cleanser 32oz.....	Ea	\$14.95
85-05-6035	Tecnu Poison Oak Cleanser 4oz.....	Ea	\$4.95
85-05-6050	PowerDEET25 Bug Repellent 2oz	Ea	\$4.95
■ TRAFFIC CONES			
85-15-3612	Traffic Cone, 12".....	Ea	\$6.00
85-15-3618	Traffic Cone, 18".....	Ea	\$8.75
85-15-3628	Traffic Cone, 28".....	Ea	\$14.25

- Call Toll Free 1-800-788-3307 -

Our Low Prices Will Earn Your Business, The Great Customer Service Will Keep It!

Stock#	Description	Unit	ESC Price
SAFETY SIGNS & ACCESSORIES			
85-20-5003	Tripod Sign Stand.....	MS-1000 Ea	\$124.95
85-20-5005	HD Tripod Sign Stand	Ea	\$189.50
85-20-5038	48" Safety Sign-Only MESH 7261	Ea	\$52.50
85-20-5048	Back Bracing For 48" Sign	CBFF 48 Ea	\$48.95
85-20-5050	Back Bracing W/Clamps For 48" Sign (CBTC).....	Ea	\$29.93
85-20-5119	Safety Flag, 18" VINYL.....	Ea	\$3.25
85-20-5120	Traffic Cone Sign, Survey Crew	Ea	\$15.00
85-20-5152	Stop/Slow Paddle.....	Ea	\$15.95
LATH			
90-05-0018	Wood Lath 18".....	50/Bd	\$10.50
90-05-0024	Wood Lath 24".....	50/Bd	\$13.50
90-05-0036	Wood Lath 36".....	50/Bd	\$21.75
90-05-0048	Wood Lath 48".....	50/Bd	\$27.95
Marker/Stakes			
90-10-0006	Marker/Stakes, 6x1x2".....	100/Bx	\$12.00
90-10-0008	Marker/Stakes, 8x1x2".....	100/Bx	\$15.00
90-10-0012	Marker/Stakes, 12x1x2".....	50/Bd	\$8.25
90-10-0018	Marker/Stakes, 18x1x2".....	50/Bd	\$12.00
ROUND GINNIES			
90-15-0006	Round Ginnies 6".....	200/Bx	\$25.50
90-15-0008	Round Ginnies 8".....	200/Bx	\$28.50
90-15-0012	Round Ginnies 12".....	Box/100	\$
FEATHERED GINNIES			
90-16-0006	Feathered Round Ginnies, 6".....	125/Bx	\$61.95
90-16-0008	Feathered Round Ginnies, 8".....	125/Bx	\$68.95
SQUARE HUBS			
90-20-0006	Hubs, Fir 6".....	50/Bx	\$12.00
90-20-0008	Hubs, Fir 8".....	50/Bx	\$15.00
90-20-0012	Hubs, Fir 12".....	50/Bx	\$21.00
FIELD BAGS, LATH CARRIERS			
90-25-8089	Heavy-Duty Bucket Bag SECO.....	.8095-50-RED Ea	\$21.95
90-25-8090	Stake Bag, 18" HD Cordura	8090-20-ORG Ea	\$58.95
90-25-8091	Stake Bag, 18" Cordura Divided.....	8091-20-ORG Ea	\$62.95
90-25-8092	Stake Bag, 24" Cordura.....	8092-20-ORG Ea	\$62.95
90-25-8100	Lath Bag, 36" W/Shoulder Strap	8100-00-ORG Ea	\$41.95
90-25-8101	Lath Bag, 48" W/Shoulder Strap	8101-20-ORG Ea	\$53.95
90-25-8765	Lath Carrier 33" w/Handles	8102-00-ORG Ea	\$61.95
90-25-8800	Aluminium Lath Carrier.....	Ea	\$56.95
90-25-8801	Aluminium Lath Carrier Bag	8232932 Ea	\$46.95
REBAR			
90-30-0005	Rebar 1/2"x 12".....	Ea	\$0.75
90-30-0006	Rebar 1/2"x 18".....	Ea	\$1.13
90-30-0007	Rebar 1/2"x 24".....	Ea	\$1.50
90-30-0008	Rebar 5/8"x 12".....	Ea	\$1.16
90-30-0010	Rebar 5/8"x 18".....	Ea	\$1.75
90-30-0012	Rebar 5/8"x 24".....	Ea	\$2.33
90-30-0015	Rebar 5/8"x 30".....	Ea	\$2.92
90-30-0020	Rebar 5/8"x 36".....	Ea	\$3.52
IRON PIPE, REAMED & GALVANIZED			
90-32-0118	Iron Pipe, Reamed/Galvanized 1"X18".....	Ea	\$9.50
90-32-0124	Iron Pipe, Reamed/Galvanized 1"X24".....	Ea	\$11.75
90-32-0130	Iron Pipe, Reamed/Galvanized 1"X30".....	Ea	\$11.95
90-32-1218	Iron Pipe, Reamed/Galvanized 1/2x18"	Ea	\$3.52
90-32-1224	Iron Pipe, Reamed/Galvanized 1/2x24"	Ea	\$6.75
90-32-1230	Iron Pipe, Reamed/Galvanized 1/2x30"	Ea	\$8.25
90-32-3418	Iron Pipe, Reamed/Galvanized 3/4x18"	Ea	\$6.75
90-32-3424	Iron Pipe, Reamed/Galvanized 3/4x24"	Ea	\$8.75
90-32-3430	Iron Pipe, Reamed/Galvanized 3/4x30"	Ea	\$10.60

Surveyor's Lath

Douglas Fir, Finished on both sides
Available in 18" 24" 36" 48"

Lath, Ordered By The Bundle, Or By The Pallet. We Can Deliver To You!



SECO HD Cordura
5-pocket Stake Bag
18" or 24"
with or without a Divider



90-25-8089
SECO HD Bucket Bag
"Bucket Not Included"



SECO Lath Carrier
with Shoulder Strap
36" or 48"



SECO 33" Lath Carrier
with handles



HD Aluminum
Lath Holder
90-25-8800



We Stock
3/8", 1/2", 5/8"
In Lengths Of
12", 18", 24"
Custom cut lengths available

- VOLUME 17 EQUIPMENT PRICE GUIDE -

Precision Positioning Systems For Land Surveyors And General Contractors

Marking Accessories



Plastic Survey Plugs
90-35
Available in Red, Orange, Yellow, Pink and Blue
(See order form on page 40)

Aerove Marking and
Striping Paint
95-05



11" Spot Marker
95-16-0244



38" Marking Stick
95-16-0245



4-Roll Flagging
Dispenser
95-25-8025



Surveyors Flagging
95-25-0000

Stake Trackers
95-40-0060



72" x 72"
Bulls-Eye Aerial Targets
95-30-0050



48" x 48"
Blue-Max Aerial Targets
95-30-0040



21" Wire Stake Flags
95-35-2100



Stock#	Description	Unit	ESC Price
■ PLASTIC SURVEY MARKERS (PLUGS)			
90-35-3000	PLM-3 Plug 1/2"Pipe-3/8"Rebar	Ea	\$0.38
90-35-4000	PLM-4 Plug 3/4"Pipe-1/2"Rebar	Ea	\$0.41
90-35-5000	PLM-5 Plug 1"Pipe-5/8"Rebar	Ea	\$0.44
90-35-6000	PLM-6 Plug 3/4"Rebar	Ea	\$0.48
■ AERVOE MARKING/STRIPING PAINT			
95-05-0222	Marking Paint 20oz Cans	Can	\$3.75
95-05-0222	Marking Paint 20oz Cans	Case/12	\$42.95
95-10-0710	Striping Paint, 20oz Cans	Can	\$5.00
95-10-0710	Striping Paint, 20oz Cans	Case/12	\$59.95
■ MARKING PAINT ACCESSORIES			
95-16-0244	Spot Marker, 11" Handle	Ea	\$13.95
95-16-0245	Marking Stick, 38" Handle	Ea	\$23.95
95-16-8090	Paint Can Holder, Cordura With Pockets	Ea	\$20.95
95-16-8098	Paint Can Holder, Cordura	Ea	\$11.95
■ FLAGGING			
95-25-0000	Flagging, Solid Colors	Dz	\$14.50
95-25-0000	Flagging, Solid Colors	Ea	\$1.50
95-25-0000	Flagging, Solid Colors	GR	\$174.95
95-25-0020	Flagging, Striped Colors	Dz	\$17.95
95-25-0020	Flagging, Striped Colors	Ea	\$1.65
95-25-0020	Flagging, Striped Colors	GR	\$215.00
95-25-0050	Flagging Tape Dispenser	Ea	\$8.50
95-25-8025	Flagging Dispenser, 4 Roll	Ea	\$25.00
■ AERIAL FLAGGING & PANELS			
95-30-0019	Aerial Flagging HD 4" X 300'	Ea	\$11.50
95-30-0020	Aerial Flagging HD 6" X 300'	Ea	\$16.95
95-30-0025	Aerial Flagging HD 8" X 300'	Ea	\$22.95
95-30-0030	Aerial Flagging HD 12" X 300'	Ea	\$33.95
95-30-0031	Aerial Flagging HD 18" X 300'	Ea	\$41.95
95-30-0040	Blue Max Flight Panels 48"Cross	Ea	\$9.50
95-30-0050	Aerial Targets 72"x72" 6-Mil	Ea	\$21.95
95-30-0060	Aerial Rolls, 12" Black/White	Ea	\$34.95
■ WIRE STAKE FLAGS			
95-35-2100	Stake Flags, 21" 2.5"x3.5"	Bundle/100	\$10.95
95-35-2100	Stake Flags, 21" 2.5"x3.5"	Box/1000	\$89.95
■ STAKE CHASERS			
95-40-0060	Stake Trackers	Box/1000	\$110.00
95-40-0060	Stake Trackers	Bun/25	\$2.88
95-40-0065	Stake Chaser Installation Tool	Ea	\$19.95



- Call Toll Free 1-800-788-3307 -

Our Low Prices Will Earn Your Business, The Great Customer Service Will Keep It!

Stock#	Description	Unit	ESC Price
■ CARSONITE BOUNDARY MARKERS			
95-42-0059	Carsonite Boundary Marker Kit	Ea	\$437.50
95-42-0060	Carsonite Boundary Marker	Ea	\$18.95
■ LUMBER CRAYONS & HOLDERS			
95-45-0520	Lumber Crayons,	Dz	\$9.95
95-45-0530	Crayon Holder, Wood	Ea	\$6.95
■ NEGRO LEAD & CONST PENCILS			
95-50-0001	Negro Lead, 6-Pk	Pk/6	\$7.25
95-50-0002	Negro Lead Holder, #48	Ea	\$12.95
95-50-0003	Negro Lead Holder, w/Sharpener	Ea	\$14.95
■ MARKING PENS			
95-55-1000	Ideal Marking Pens,	Dz	\$29.95
95-55-1000	Ideal Marking Pens,	Ea	\$2.95
95-55-1001	Ideal Replacement Tips Only	Dz	\$6.95
95-55-8717	Dixon RediMarker Wedge Point	Dz	\$24.95
95-55-8717	Dixon RediMarker Wedge Point	Ea	\$2.95
95-55-9000	Ideal Paint Marker, Ball Tip	Dz	\$30.00
95-55-9000	Ideal Paint Marker, Ball Tip	Ea	\$2.95
95-55-9500	Dixon Paint Marker, Bullet Tip	Dz	\$29.95
95-55-9500	Dixon Paint Marker, Bullet Tip	Ea	\$2.95
■ TWINE & ROPE			
95-60-0002	Seine Twine White #18x1lb Roll	Ea	\$9.95
95-60-0003	Seine Twine Color #18x1lb Roll	Ea	\$120.95

Marking Accessories



- VOLUME 17 EQUIPMENT PRICE GUIDE -

Precision Positioning Systems For Land Surveyors And General Contractors

Marking Accessories



Rubber Tack Ball
95-65-0045



Mag Nails
95-65-



Stake Tacks, 1lb/750 Box
95-65-0035



MagSpike 4-1/2"
Steel Survey Spikes
95-75-0002



MagSpike 3"
Steel Survey Spikes
95-75-0000

2-1/4" Large Flat Shiners
95-70-3430
3-Lbs Box



1-5/16" Small Raised Shiners
95-70-3431
1-Lb Box



1-1/2" Aluminum Tags
95-90-2102



3/4" Brass Tags
95-90-2100



Race-Track Tree Tags
Numbered Groups (100)
95-90-5050

(See order form on page 41)



Brass Monuments, Flat Or Domed
1-3/8", 2", 2-1/2", 3"
95-80



Nail Markers
95-95-1502



Steel Stamps, 3/8" Letters or Numbers
95-95-75



Chaining Pins
95-95-2183

Stock#	Description	Unit	ESC Price
■ STAKE TACKS, MAG-NAILS, SPIKES			
95-65-0000	Escutcheon Pins-Brass, 3/4".....	Ea	\$4.95
95-65-0004	Mag Hubs 4", (Magnetic Nails).....	23MAGHUB4 Ea	\$71.25
95-65-0006	Mag Hubs 6", (Magnetic Nails).....	23MAGHUB6 Ea	\$71.25
95-65-0008	Mag Hubs 8", (Magnetic Nails).....	23MAGHUB8 Ea	\$71.25
95-65-0005	3/4", Mag Nails.....	Ea	\$8.95
95-65-0010	1", Mag Nails.....	Ea	\$9.95
95-65-0015	1-1/4", Mag Nails.....	Ea	\$13.95
95-65-0020	1-1/2", Mag Nails.....	Ea	\$18.95
95-65-0025	2", Mag Nails.....	Ea	\$21.95
95-65-0030	2-1/2", Mag Nails.....	Ea	\$25.95
95-65-0035	Stake Tacks, 1-lb/750 Box.....	Ea	\$10.95
95-65-0045	Tack Ball.....	Ea	\$9.95
95-65-0070	Con-Nails, 1" 5lbs.....	Box/5#	\$13.75
95-65-0072	Con-Nails, 1-1/4" 5lbs.....	Box/5#	\$13.75
95-65-0074	Con-Nails, 1-1/2" 5lbs.....	Box/5#	\$13.75
95-65-0076	Con-Nails, 2" 5lbs.....	Box/5#	\$14.95
95-65-0085	Nails, 60d, 6" Bright Common.....	Box	\$62.00
95-65-0095	Spikes, 3/8"x 8" Bright Common.....	Ea	\$68.95
■ SHINERS			
95-70-3430	Shiners, Large 250-count 2-1/4".....	2181-00 Box	\$34.95
95-70-3431	Shiners, Small 260-count 1-5/16".....	2181-00 Box	\$28.95
■ MAGSPIKE STEEL SURVEY SPIKES			
95-75-0000	MagSpike (253) 3" Steel Survey Spikes.....	Box/25	\$36.95
95-75-0001	MagSpike (254) 4.5" Steel Survey Spikes.....	Box/25	\$39.95
■ MONUMENTS FLAT AND DOMED			
95-80-3400	Monument Flat 1-3/8".....	813400 Ea	\$6.95
95-80-3403	Monument Flat 2".....	813413 Ea	\$7.95
95-80-3406	Monument Flat 2-1/2".....	813406 Ea	\$8.95
95-80-3408	Monument Flat 3".....	813408 Ea	\$10.95
95-80-3410	Monument Domed 1-3/8".....	813410 Ea	\$6.95
95-80-3413	Monument Domed 2".....	813413 Ea	\$7.95
95-80-3416	Monument Domed 2-1/2".....	813416 Ea	\$8.95
95-80-3418	Monument Domed 3".....	813418 Ea	\$10.95
■ SURVEYORS TAGS (BRASS and ALUMINUM)			
95-90-2100	Tags, Brass, 3/4".....	100	\$26.95
95-90-2101	Tags, Aluminum, 1-1/2" Diameter 9/16" Hole.....	50	\$28.95
95-90-2102	Tags, Aluminum, 1-1/2" Diameter 11/32" Hole.....	50	\$28.95
95-90-2103	Tags, Brass, 1-1/2" Diameter 9/16" Hole.....	50	\$34.95
95-90-2104	Tags, Brass, 1-1/2" Diameter 11/32" Hole.....	50	\$52.50
95-90-2200	Tags, Stain-Steel, 1-1/2" Diameter 3/8" Hole.....	Ea	\$0.91
95-90-5050	Racetrack Tree Tags,.....	79142 100/Pk	\$11.95
■ MISC./MARKING EQUIP. & SUPPLIES			
95-95-1500	Duct Tape.....	Ea	\$6.00
95-95-1502	Nail Markers, 1/8" Holes.....	Pack	\$3.50
95-95-2183	Chaining Pins, 14" 11-Per Box.....	11/Bx	\$25.95
95-95-2184	Chaining Pin Ring.....	Ea	\$12.00
95-95-3220	Surveyors Lead Wire 3/8"x15".....	Ea	\$5.00
95-95-7523	Steel Stamps, Letters, 1/8" HD.....	Ea	\$75.60
95-95-7524	Steel Stamps, Numbers, 1/8" HD.....	Ea	\$25.20
95-95-7525	Steel Stamps, Singles, 1/8" HD.....	Ea	\$2.80
95-95-7526	Steel Stamps, Complete Alpha/Numeric, 1/8".....	Ea	\$16.95

- Call Toll Free 1-800-788-3307 -

Our Low Prices Will Earn Your Business, The Great Customer Service Will Keep It!

Stock#	Description	Unit	ESC Price
■ BATTERIES, MISC.. ALL			
95-96-0001	AA Batteries	2-Pk	\$1.25
95-96-0002	AAA Batteries	2-Pk	\$1.95
95-96-0003	C Batteries	2-Pk	\$2.75
95-96-0004	D Batteries	2-Pk	\$2.75
95-96-0005	D9V Batteries	Ea	\$2.75
95-96-0006	CR2 Lithium for Laser Plummet	Ea	\$9.95
■ CALCULATORS			
05-98-0033	HP-35S Scientific Calculator	Ea	\$69.99
05-98-0344	Sharp Metric Conversion Calc.....	Ea	\$19.95
05-98-3078	Const-Master Pro Trig	4080 Ea	\$89.95
05-98-3302	Const-Master Pro-DT Desktop Model	44080 Ea	\$89.95
05-98-4045	Construction Master Pro.....	4065 Ea	\$79.95
05-98-4215	Concrete Calc Pro	4225 Ea	\$69.95
05-98-4315	Heavy Calc Pro	4325 Ea	\$69.95
05-98-4316	Building Materials Estimating Calculator	4019 Ea	\$39.95
05-98-4377	Prexiso Laser Measuring Tool.....	3350 Ea	\$119.95

Building Materials Estimating Calculator

The Material Estimator is designed for contractors, trades people and estimating professionals who need to estimate materials and costs for concrete, fences, decks, bricks, tile, flooring, gravel, painting, drywall and paneling and more. It helps users quickly and easily calculate material costs and allowances and get exactly the materials they need. Reducing estimating errors will save time and money.



- Works directly in Feet, Inches, Fractions, Yards, and Meters – including Square and Cubic formats.
- Convert between all standard building math dimensions.
- Define and store values for materials such as Grout, Tile, Custom Tiles, Fence Post Spacing, Board Width, Bags of Concrete, Paint Coverage and more.
- Calculate Studs, Board Feet and Cost per Unit
- Quick Linear, Area and Volume Calculations
- Solar/Dual Power

Products By Calculated Industries



Construction Master Pro
Advanced Construction Math Calculator



Construction Master Pro Trig
Construction Math Calculator with Trig-Functions



Concrete Calc
Advanced Feet-Inch-Fraction Calculator



Construction Master Pro DT
Desktop Construction Math Calculator with Trig-Functions



Heavy Calc
Advanced Feet-Inch-Fraction Calculator F/Heavy Const.



True Laser Measuring — Easy to Use, Fast, Affordable and Precise

PREXISO X2 LASER DISTANCE MEASURER

The PREXISO X2 is a one-person laser measuring tool for distance, area and volumes. It is easier and faster to use than a tape measure, and more accurate than ultrasonic measures. Great for measuring in crowded rooms or measuring inaccessible areas. It is about the size of a modern cell phone, and fits easily in your hand, pocket or tool belt.

- Measure up to 100' with accuracy of 1/8" or better over entire range
- Faster and more accurate than tape measures
- Small size makes it easy to use in hard-to-access areas
- Measure distances in feet-inch-fractions, inch-fractions, or meters

For — Real Estate Agents and Brokers, Appraisers, Contractors/Builders, Carpenters, Plumbers, Interior Designers, Remodelers, Estimators, Dock-Yards/Boys, Painters — Anyone Who Needs Laser Accurate Measurements

Here are a few of the hundreds of uses for the Prexiso X2

- Measure distances, areas and volumes for material estimates
- Determine placement and fit for roof trussing and cabinetry
- Measure windows and window coverings
- Measure hallways, rooms, ceiling heights, and floors for floor covering
- Measure in areas and circumstances for running wire or insulation and ductwork
- Pythagorean functions — calculate distance, height or width, measure two sides of a triangle and it calculates the third

Specifications
Measuring range: 4' (1.2m) to 100' (30.5m)
Accuracy: +/- 1/8" (3 mm) or better over entire range
Laser Class: II
Sight: Infrared/Red
Measuring Modes: Measure from front or rear edge or internal or external to nearest inside
Weight: (product only) will be only 1.5 lb. (710 g)
Power: 2 AAA batteries (included)
Power Management: Auto shut-off after 1 minute
Battery life: up to 2000 measurements
Size: 4.5" x 2.2" x 1.2" (115 x 57 x 31 mm)
Includes: Rapid carrying case, 2 AAA batteries and 2 year warranty
Operating temperature range: 32°F to 103°F (0°C to 40°C)
Country of Origin: Hungary

Calculated Industries
4883 Highway Drive, Carson City, NV 89706
1-775-885-4902 • Fax: 1-775-885-4900 • www.calculated.com

2 Year

For accurate conditions please refer to our user manual for measurement instructions. An ISO 9001 certification is available. In order to maintain ISO 9001 certification, strict adherence to our quality management system is required. For more information visit our website at www.calculated.com

Built-In Functions Easily Solve Linear, Area, Volume and Indirect Measurements

AREA

VOLUME

INDIRECT MEASUREMENTS

- SERVICE REPAIR RATES VOLUME 17 -

Precision Positioning Systems For Land Surveyors And General Contractors

Equipment Servicing and Repair



December 31, 2015

**** SERVICE LABOR RATES ****

Optical Total Stations.....	\$105.00 hr
Electronic/GPS/Robotic/Lasers.....	135.00 hr
Mechanical.....	75.00 hr

Minimum evaluation charge for repairs that are declined after quote is given **\$40.00**

Instrument Description	Light Clean & Calibration	Complete Clean & Calibration (Overhaul)
Total Station.....	(+ Parts) \$395.00	(+ Parts) \$595.00
Robotic Total Station "Motorized"	495.00	695.00
Theodolite, Electronic.....	125.00	295.00
Theodolite,	150.00	295.00
Transit, Electronic.....	125.00	245.00
Transit, Builders.....	95.00	195.00
Transit-Level.....	115.00	165.00
Builders Dumpy-Level.	95.00	125.00
Auto Level, Builders.....	75.00	140.00
Auto Level, Engineers	95.00	160.00
Digital Levels (Bar Code Rod Models)		165.00
Laser Level, single plane.....	95.00	140.00
Grade Laser, single/dual plane.....	125.00	195.00
Pipe Laser	180.00	250.00
Tribrach, w/optical plummet.....	65.00	90.00
Battery Re-Celling, (7-cell battery typ.).....	N/A	120.00
Battery Re-Celling, (Day-Saver).....	N/A	60.00
GPS Hiper Re-Cell (conductive seals not included).....	Per Receiver	395.00
GPS Hiper Replacement Conductive Seal.....	Per Seal	155.00
GPS GR-3 Battery Re-Cell.....	Per Battery	150.00
GPS Firmware Upgrade (Hiper conductive seals not included).....	Per Receiver	50.00
GPS System Testing and Evaluation.....	Per System	100.00
GPS Repairs.....	Estimates only given after evaluation!	
Radios	Estimates only given after evaluation!	

All repairs are due and payable upon completion, unless you have an established account with Engineering Supply Company. Any repairs left for over 60 days and not paid for, will be sold to recover any labor and parts expenses incurred by Engineering Supply Company.

- RENTAL EQUIPMENT RATES VOLUME 17 -

Our Low Prices Will Earn Your Business, The Great Customer Service Will Keep It!

Rental Equipment/Training



Surveying Equipment Rental

Total Stations Include: 1 ea. tripod, single prism, and prism pole.

	Per Day	Weekly	* Monthly
Total Station-Robotic "One-Man" Remote Control Package.....	\$175.00	\$700.00	\$2,100.00
Total Station, Conventional, Reflectorless.....	\$75.00	\$300.00	\$900.00
Digital Levels w/BAR-Code Rod DL-503/502.....	\$45.00	\$125.00	\$350.00
Auto Level, Engineers-Topcon.....	35.00	140.00	420.00
Radios, Motorola CP-200.....	20.00	80.00	240.00
Accessories: Tribrachs, Tripods, Prism Poles, Triple Prisms Etc.	10.00	40.00	120.00

GPS Equipment Rental (1-Day Minimum)

Topcon RTK System With Controller.....	\$450.00	\$1,800.00	\$5,400.00
Topcon RTK Network Rover Only (Network).....	\$350.00	\$1,400.00	\$4,200.00
Hand Held L-1 GIS GPS-WAAS Enabled Receiver.....	\$95.00	\$380.00	\$1,140.00

GPS Network "Top-Net" Airtime Only

Network Rover "Standalone".....	\$25.00	N/A	\$175.00
Network Rover "System-Pair" (2).....	\$100.00	N/A	\$300.00

Data Collection Systems

Topcon or TDS-Spectra.....	\$50.00	\$200.00	\$600.00
----------------------------	---------	----------	----------

Contractors Equipment

Auto Level, Engineers-Topcon.....	35.00	140.00	420.00
RL-H4C Laser Level with Sensor unit and tripod (Long Range).....	50.00	200.00	600.00
Electronic Transit, DWT-30, 30-second with tripod.....	50.00	200.00	600.00

Rental Purchase: We will apply 100% of all rental fees due or paid, if the equipment is purchased and paid for within 30 days of the day of rental, there after 75% is applied, up to 80% of the equipment sales price.

*Rental rates **do-not** automatically convert from daily to monthly, the term must be specified when the equipment is initially rented. *Monthly rentals are billed when the unit goes out.

On-Site Training

GPS/Robotics System Setup, Traing and Support 12-Months. Part# 05-09-0551.....	\$750.00
--	----------

ESC ENGINEERING SUPPLY COMPANY

2490 Arnold Industrial Way, Unit P, Concord, CA 94520 Sales: (800) 788-3307 Fax: (925) 680-2504

- PLASTIC SURVEY MARKERS -

Precision Positioning Systems For Land Surveyors And General Contractors

Date: _____

Please Fax To: 925-680-2504

Company: _____

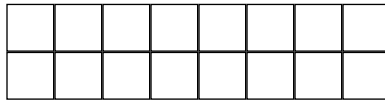
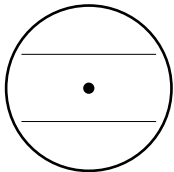
Telephone: _____

Plastic Survey Markers

Designed to fit over rebar or inside iron pipe. Made from durable polyethylene to insure longevity in the toughest environments

(Actual Size)

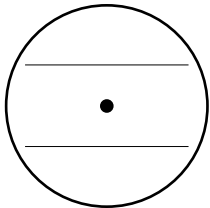
(All Plastic Markers Have Black Lettering)



Stock# 90-35-3000
Model: PLM-3
Fits: 1/2" Pipe or 3/8" Rebar

Model: PLM-3

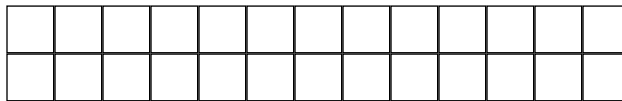
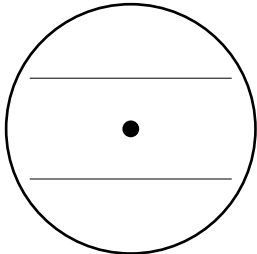
Quantity: _____ Color: Yellow Red Orange



Stock# 90-35-4000
Model: PLM-4
Fits: 3/4" Pipe or 1/2" Rebar

Model: PLM-4

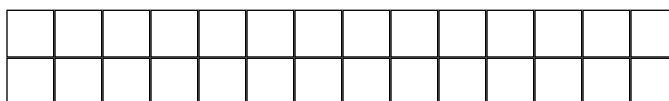
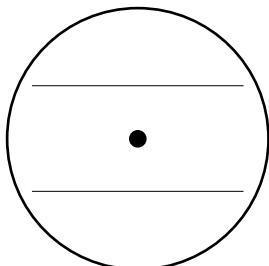
Quantity: _____ Color: Yellow Red Orange



Stock# 90-35-5000
Model: PLM-5
Fits: 1" Pipe or 5/8" Rebar

Model: PLM-5

Quantity: _____ Color: Yellow Red Orange



Stock# 90-35-6000
Model: PLM-6
Fits: 3/4" Rebar

Model: PLM-6

Quantity: _____ Color: Yellow Red Orange

- BRASS AND ALUMINUM TAGS -

Our Low Prices Will Earn Your Business, The Great Customer Service Will Keep It!

Please Fax To: 925-680-2504

Brass and Aluminum Survey Marker Order Form

Fax Orders To: 925/680-2504

Date: _____

P.O.# _____

Bill To: _____

Ship To: _____

#2100

#2104

#2102

#2103

#2101

Quantity _____

Quantity _____

Quantity _____

3/4" Brass Only

1-1/2" _____ Brass 1-1/2" _____ Aluminum

1-1/2" _____ Brass 1-1/2" _____ Aluminum

ESC# 95-90-2100

ESC# 95-90-2104 ESC# 95-90-2102

ESC# 95-90-2103 ESC# 95-90-2101

(Minimum 100)

(Minimum 50) (Minimum 50)

(Minimum 50) (Minimum 50)

Hole Size 1/8"

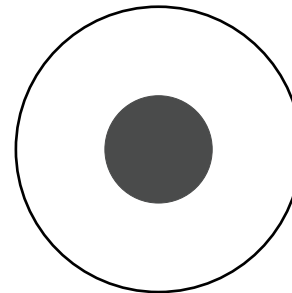
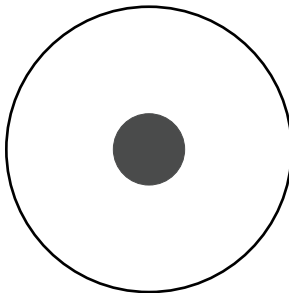
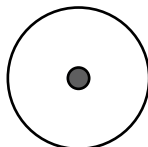
Hole Size 11/32"

Hole Size 9/16"

Up To 9 Characters Per Line
2-Lines

(Up To 30 Characters)

(Up To 30 Characters)



Custom Stamping

Custom Stamping

Custom Stamping

Top Line: _____

Top Line: _____

Top Line: _____

Bottom Line _____

Bottom Line _____

Bottom Line _____

ESC ENGINEERING SUPPLY COMPANY

2490 Arnold Industrial Way, Unit P, Concord, CA 94520 Sales: (800) 788-3307 Fax: (925) 680-2504

- FAX SALES ORDER FORM -

Precision Positioning Systems For Land Surveyors And General Contractors

Please Fax To: 925-680-2504

BILL TO:

SHIP TO:

ORDERED BY:

TELEPHONE NO:

ACCOUNT NO.	PURCHASE ORDER NO.	SHIP METHOD	TERMS	CREDIT CARD #	EXP DATE	ORDER DATE
-------------	--------------------	-------------	-------	---------------	----------	------------

QTY ORDERED	ITEM NUMBER	DESCRIPTION	UNIT PRICE

A FINANCE CHARGE OF 1.5% PER MONTH OR 18% PER YEAR WILL BE ADDED TO ALL PAST DUE ACCOUNTS. TITLE FOR ALL EQUIPMENT REMAINS WITH ENGINEERING SUPPLY COMPANY UNTIL PAID IN FULL. PURCHASER AGREES TO PAY ALL COSTS OF COLLECTIONS INCLUDING REASONABLE ATTORNEY FEES.

Return Policy: Any items returned must be in new condition in the original packaging. All items must be accompanied with a receipt. Any returns must be made within 30-days of the date of purchase.

A Restocking Fee Of 15% may be charged on Returned Merchandise. Special order items are not returnable.

FEDERAL I.D. NUMBER 68-0443920

SALE AMOUNT	
MISC. CHARGES	
SALES TAX	
FREIGHT	
TOTAL DUE	

Our Low Prices Will Earn Your Business, The Great Customer Service Will Keep It!

MAGNET-3 CLOUD BASED SOLUTION FOR PRECISE POSITIONING

FIELD

Modern User Interface

MAGNET Field On-board provide a bright, graphical user interface with large touch icons, and bright readable text. The screens not only look good, but provide fast workflows.



Easy to Use

The icon and text field interface has been optimized to provide both text and images to indicate what data is needed on each screen. Shortcut buttons and fast access tabs provide a very productive interface.



Advanced Calculations

MAGNET Field On-board not only controls the measurements of the OS, but also provides many COGO and adjustment calculations right on the instrument. Stay on-board to complete your work.



OFFICE

MAGNET Office Tools

Directly integrates in Autodesk products utilizing their CAD engine, or as a standalone installation with Topcon's CAD engine. Either way, connect to MAGNET Enterprise directly from your CAD software.



"TOP-NET LIVE"

California's Largest High Accuracy Real Time "RTK" GNSS Reference Station Network. All operational and future reference stations are broadcasting GPS and Glonass corrections. TOP-NET Reference Station Map As Of December 1, 2012



TOPCON

INTRODUCING

THE ELITE SURVEY SUITE

HIPER HR
ADVANCED CONNECTIVITY

PC-5000
COMPACT POWER

MAGNET 4
ALL ACCESS

GT SERIES
SUPERSONIC SPEED

MULTIPLE TECHNOLOGIES, ONE POWERFUL SOLUTION
 Our new combination of products and services make your jobs faster, easier, and more profitable. Get the industry-leading solutions that can take your surveying to ELITE levels.

ENGINEERING SUPPLY COMPANY

YOUR ONE STOP SOURCE FOR TOPCON SURVEYING SYSTEMS, BIM SOLUTIONS, CONSTRUCTION LASERS, TRANSITS, LEVELS, RADIOS, SUPPLIES, ACCESSORIES AND MORE!

We Now Offer Two Locations To Serve You Better!



Concord, California

2490 Arnold Industrial Way, Unit P, Concord, CA 94520 USA
(925) 680-4701 Sales: (800) 788-3307
Fax: (925) 680-2504

Sacramento, California

4208 North Freeway Blvd., Suite 1B, Sacramento, CA 95834 USA
(916) 375-1429 Sales: (800) 788-3307
Fax: (916) 372-2399

To Order, Call Toll Free: 1-800-788-3307

www.escsurvey.com
Engineering Supply Company, Inc.