

Preliminary Engineering

Public Involvement Summary | December 11, 2017

(Updated February 12, 2018)



Downtown Redmond Link Extension



Contents

Background	3
Overview.....	3
Notification	4
Key Findings.....	5
Open house overview	5
How did you hear about the open house?	5
Open house comment summary	6
Online open house.....	7
Key findings	7
Where respondents live and work	8
Downtown Redmond station area	10
Southeast Redmond Station area.....	12
Imagining the future of Redmond	18
Next Steps	18

Background

The Downtown Redmond Link Extension project will extend light rail to downtown Redmond. The project builds 3.4 miles of new light rail from the Redmond Technology Center Station, opening in 2023, to downtown Redmond by 2024. Light rail will travel along SR 520 to a new station in southeast Redmond near Marymoor Park, and another in downtown Redmond. This project is part of the voter approved system expansion plan to add 62 more miles of light rail throughout the region.

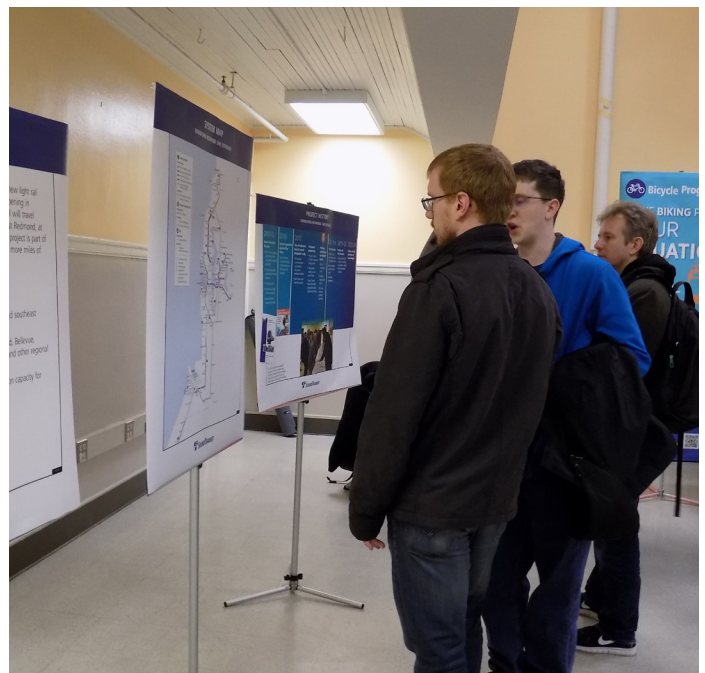


*The 2007-2009 Great Recession reduced the projected ST2 tax revenues by approximately \$4.2 billion. In response, the Sound Transit Board removed these two stations from the East Link Extension project until funding could be identified.

Overview

Sound Transit hosted an in-person open house and online open house and survey to update the community on the project status and gather input on the look and feel of future light rail station areas in southeast and downtown Redmond. Open house participants reviewed design concepts, environmental findings and learned about the project timeline and next steps. Project staff were available to answer questions and encouraged community members to take the online survey. Online open house participants could view project background information and were encouraged to take the survey to provide input on station areas.

- Open house
November 16, 2017
Old Redmond Schoolhouse Community Center.
- Online open house and survey
November 16-December 9, 2017



Notification

The open house and survey were publicized through the following channels:

- More than 11,400 postcards mailed to residents and businesses within a ½ mile of the project alignment.
- Postcards hand delivered to 50 residents immediately adjacent to the project alignment and distributed electronically to social service organizations.
- Advertisements in local newspapers and online publications including La Raza, Seattle Chinese News, Seattle Chinese Times, SeattleIndian.com, Seattle Times, Seattle Transit Blog, and Redmond Reporter.
- Email notification to approximately 1,900 subscribers of the Downtown Redmond Link Extension listserv.
- Announcement on the Sound Transit and City of Redmond Downtown Redmond Link Extension web pages
- Social media posts on Sound Transit and the City of Redmond's Facebook and Twitter pages
- Press release to local media outlets.

Sidewalk Sessions

Sound Transit hosted a neighborhood information session on November 15, 2017. A Sound Transit community outreach specialist set-up a table at 154th Ave NE to encourage neighbors to learn about the project, provide input and ask questions. Staff distributed invitation flyers to approximately 50 residents and six residents visited the booth. Residents asked questions about potential noise and vibration from the future light rail service.



SOUNDTRANSIT

Downtown Redmond Link Extension

Help shape the future of Downtown Redmond Link

Sound Transit is moving forward with plans to extend light rail to downtown Redmond.

Attend an open house to:

- See updated design plans
- Help shape the look and feel of light rail in Redmond
- Learn more about our updated environmental review, project timeline and next steps

Take the survey:
redmondlink.org

When:

November 16, 2017 | 5-7 p.m.
Presentation begins at 5:30 p.m.

Where:

Old Redmond Schoolhouse
Community Center
16600 NE 80th St.
Redmond, WA 98052

Postcard announcement



Online advertisement

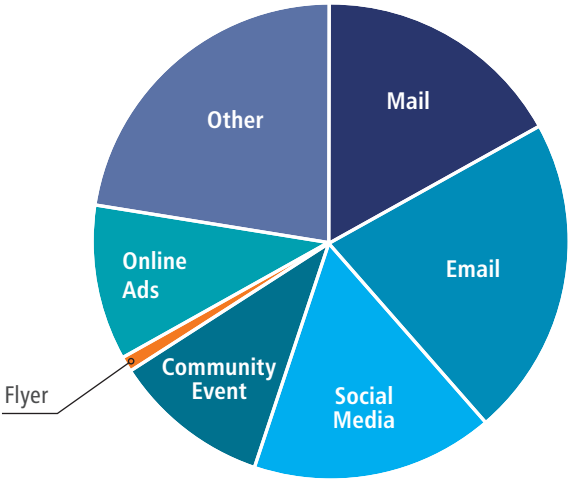
Key Findings

Open House Overview

Approximately 130 people attended the in-person open house to receive a project update and provide input on the look and feel of light rail station areas in Redmond. Attendees were greeted by project staff, asked to sign-in and provided with a project fact sheet and comment form. Display boards and roll plot maps featured information about the project features, timeline, environmental updates, and design concepts.

City of Redmond and King County Metro staff also provided information about nearby projects and services. Sound Transit and City of Redmond staff gave an overview presentation and project team members were available to answer questions and explain design details. Staff encouraged attendees to take the online survey or submit a comment form.

How did you hear about the open house?





Open House Comment Summary

The project team accepted public comments in person at the open house and by email following the meeting. A summary of feedback collected at the open house as well as written comments received between November 16 and December 9 is provided below. Transcribed comments are included in italics below to highlight the tone of public comment. Please see the following section for a summary of the survey results.

Transit connections

A few people expressed interest in transit connections.

- Will 545 still operate as a fast connection from Redmond to Seattle, or if not will travel times improve using light rail & bus or get worse?
- What will become of Sound Transit bus 545?

Bicycle amenities

One individual provided comments about bicycle connections and amenities.

- I am interested in seeing quality bike connections with the SRT, and extensive bike parking at the new stations. My wish list for this project includes super dense high rise TOD here, greenery, a proper bike network with good connections to the Sammamish River Trail, transit lanes when needed, and reduction or ideally elimination of car parking requirements (since we're trying to be transit oriented here), and a walkable grid with signals that favor pedestrians/cyclists/transit.

Station design features

Participants provided comments about station design features, including weather protection.

- I like the downtown station concept, with the glass enclosure/building!! It should be "urban", as you are showing it in the examples. We need weather protection!!!
- I really like facilities (garage, stations) that are enclosed and protected from the weather. Please provide more enclosure - it also makes the station look more like a building.
- Can you let there be light (sunlight)? Can you let it be quiet? I'm concerned about the density, compactness, and crime that accompanies such situations. Darkness 24/7 by blocking out the sun does not appeal to me.

Southeast Redmond parking garage

Participants offered mixed support for parking and transit oriented development.

- Plus 1400 parking spaces will not make a dent in needs at current rates of growth in my opinion.
- Less parking, at or at least make paid/variable.
- The garage should be convertible to TOD.

Street improvements

There were a few comments related to street improvement to accommodate the light rail.

- Since the SE Redmond station will bring a lot of new traffic onto NE 70th St, I would strongly urge the intersection of Redmond Way, and NE 70th St to be changed into a 2-lane roundabout in order to create a fluid and safer intersection traffic, which would also look nicer since the center could be made into a nice green island.
- Make Cleveland a one way – safe for people.

Support for light rail

Several participants expressed support for light rail and encouraged Sound Transit to extend service.

- It would be great to have a station at NE 51 St!!!
- It is a shame that the alignment goes from Bellevue to SE Redmond to Downtown Redmond instead of Bellevue to Downtown Redmond to SE Redmond which would be less expensive to construct and operate and allow for an extension to the foot of Sahalee Way.
- It will be great to have light rail in downtown Redmond.
- I'm excited about it. Wish it could come sooner.

Online open house

The online open house featured project background information and a survey to gather feedback for the design and look and feel of future station areas. The online open house was available from November 16 – December 9 and received 4,255 visits, 3,281 of which were unique visitors (meaning 3,281 different people accessed the online open house while 974 of them were repeat visitors). 461 people provided input through the online survey.

The online open house provided project background and linked to Sound Transit's project webpage for additional information and open house materials. The site also encouraged community members to contact project staff directly to ask any questions.

Key findings

Respondents expressed several common preferences for both station areas:

- Future riders anticipate using the station to travel to the airport, recreational activities, and shopping.
- Respondents prefer design themes that reflect the great outdoors. 79% of respondents providing feedback on the downtown Redmond station and 71% of those providing feedback on the southeast station selected "natural environment" as a preferred design theme. Moreover, 70% of southeast station respondents listed "Marymoor Park, trails and outdoor recreation" as a desired design theme.
- Passing through the station area easily is the top priority for riders. 87% of downtown station respondents and 79% of southeast station respondents listed "pass through easily" among the things they wanted to do or see at the light rail station.
- Respondents are interested in a variety of amenities, including seating options, gathering areas, flexible spaces for community activities, and activities that enliven the space.
- People are interested in similar activities at the downtown and southeast station areas. Downtown respondents suggested activities such as purchasing food and beverages (47%), meeting a friend (41%), picking up a bike (34%), and a visiting a temporary marketplace (33%). Southeast Redmond respondents suggested activities such as purchasing food and beverages (44%), picking up a bike (37%), meeting a friend (33%), and participating in urban play/entertainment (29%).
- One notable distinction is more people plan to walk to the downtown Redmond station (50%) than to the southeast Redmond station (38%).

This screenshot shows the 'Contact' form on the Sound Transit online open house website. The form is titled 'Contact' and 'Contact Downtown Redmond Link Extension project staff'. It includes fields for 'Name' (with sub-fields for 'First' and 'Last'), 'Email', 'Phone', and 'Comment/Question'. A 'SUBMIT' button is located at the bottom of the form. The footer of the page contains the Sound Transit logo and the text '© 2017 Redmond Link Expansion | Sound Transit | Site Map'.

Where respondents live and work

Figure 1

Almost all respondents live in King County (97%). The remainder live in Snohomish (2%), Pierce (0.4%), or somewhere else. The two “other” counties reported are Yakima and Island counties (0.2% combined).

Figure 2

The survey asked residents of King, Pierce, and Snohomish counties which city they lived in or closest to.

The vast majority of respondents live in Redmond (75.2%). The next largest proportion of respondents live in Seattle (7.9%). However, participants came from a number of cities throughout the region, including Kirkland (3.3%), Sammamish (2.6%), and Bellevue (2.6%).

Figure 3

The largest portion of respondents live in Sammamish Valley (28%) or southeast Redmond (21%) neighborhoods. A number of other respondents live in Overlake (10%), Idylwood (8%), and Willows and Rose Hill (8%) neighborhoods.

Which county do you live in?

Base: all respondents (n = 461)

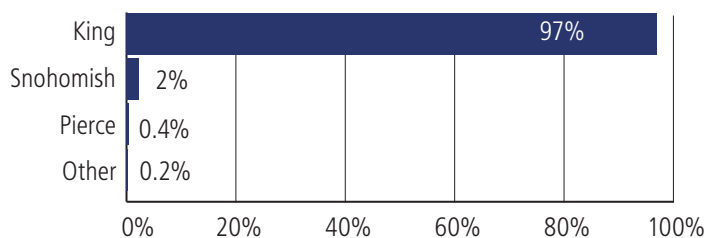
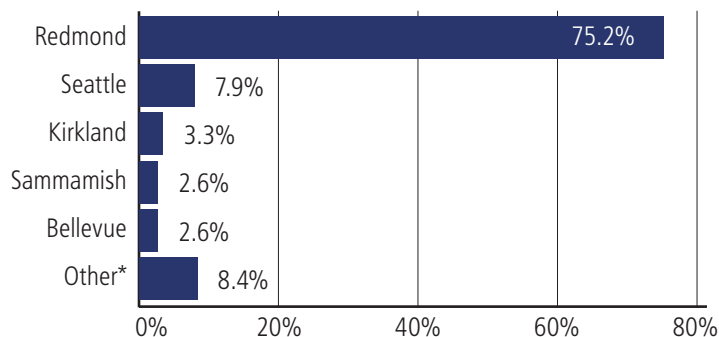


Figure 1

What city do you live in or closest to?

Base: all respondents (n = 455)



*Respondents who indicated “other” came from: Unincorporated King County (1.3%); Woodinville (1.1%); Bothell and Renton (0.7%); Duvall, Issaquah, Monroe, Tacoma, Unincorporated Snohomish county (0.4%); and Arlington, Carnation, Clyde Hill, Lynnwood, Mercer Island, Mukilteo, Pacific and Shoreline (0.2%).

Figure 2

Which neighborhood do you live in?

Base: Redmond residents (n = 293)

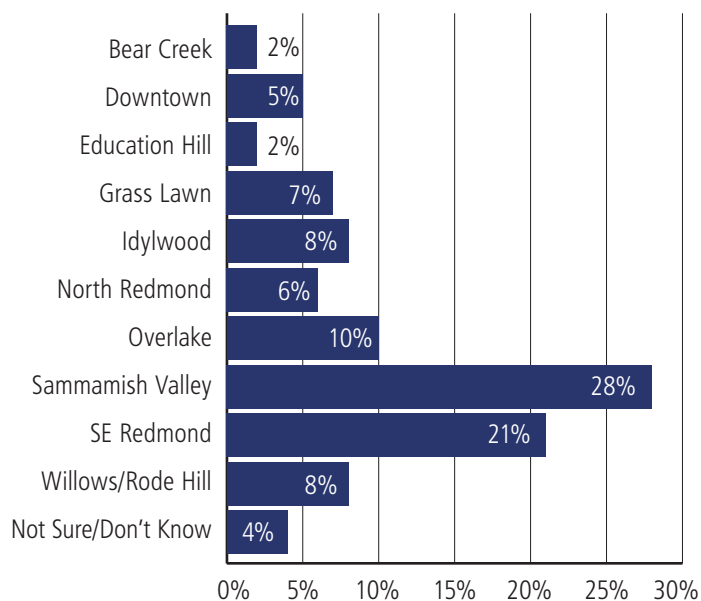


Figure 3

Figure 4

A slight majority of respondents (52%) do not work in Redmond.

Figure 5

The survey asked respondents who live in Redmond or who work in Redmond how long they have lived and/or worked in Redmond.

Participants are evenly split between people who have lived and/or worked in Redmond for 10 years or less (49%) and those who have lived and/or worked in Redmond for more than 10 years (51%). About a third (30%) of respondents have lived/worked in the city for 5 years or less, whereas around a quarter (22%) have lived and/or worked in the city for over 20 years.

Figure 6

Participants were prompted to choose the station areas for which they would like to provide input. Many chose to provide input on both the downtown Redmond and the southeast Redmond stations, although most respondents (90%) provided input on the downtown Redmond station area.

Do you work in Redmond?

Base: all respondents (n = 403)

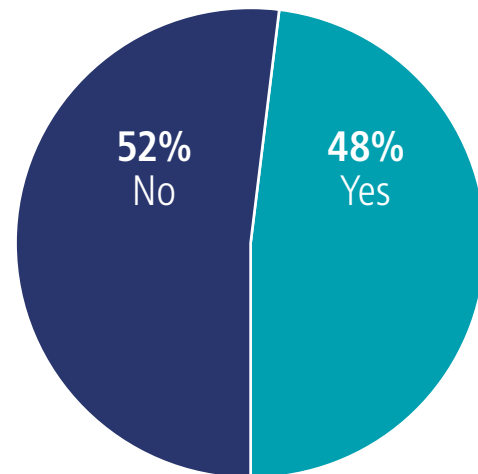


Figure 4

How many years have you lived and/or worked in Redmond?

Base: all respondents (n = 461)

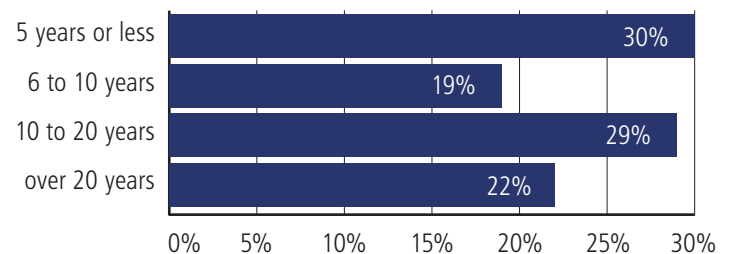


Figure 5

Which of the stations would you like to provide input on? You may select one or both.

Base: all respondents (n = 461)

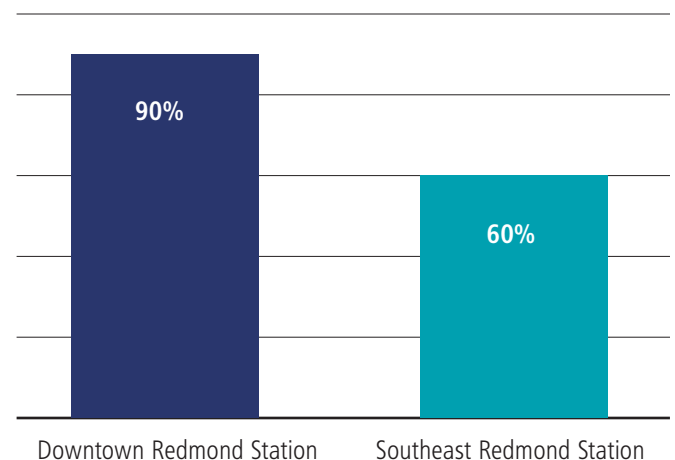


Figure 6

Downtown Redmond station area

Figure 7

The majority of respondents plan to travel to or from the downtown Redmond station by:

- Getting dropped off by car (52%)
- Walking (50%)
- Taking the light rail (48%)
- Taking the bus (45%)

This question purposely did not include a “drive and park” option because the station does not include parking. However, 81% of respondents who selected “other” (comprising 17% of all respondents) said they would drive to the station and park.

Seattle residents are more likely than residents of other cities to travel to/from the station by car and light rail. Redmond residents, on the other hand, are less likely to travel to the station by light rail than other respondents.

Figure 8

Respondents plan to use the downtown Redmond station area for:

- Travel to/from SeaTac Airport (70%)
- Recreational activities (65%)
- Errands and/or shopping (56%)

Respondents mentioned several other reasons for using the downtown Redmond station, namely traveling to Seattle (51% of “other” responses).

Redmond residents and those who have lived/worked in Redmond a longer time, are more likely than other respondents to use the station for travel to/from the airport. In contrast, Seattle residents are less likely than other respondents to use the station for travel to/from SeaTac.

Respondents who live near the station are more likely to use the downtown Redmond station for recreational activities than those who live farther away.

Those who have lived/worked in Redmond for a shorter period of time are more likely to use the station to commute to/from work than those who have lived/worked in the area longer.

How do you anticipate traveling to or from the downtown Redmond station?

Base: all respondents who provided feedback on the downtown station (n = 415)

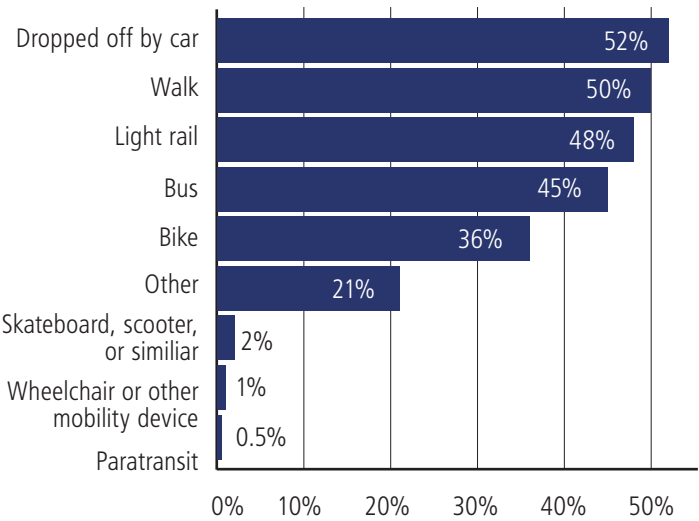


Figure 7

What do you think you will be using the downtown Redmond station for? Select all that apply.

Base: all respondents who provided feedback on the downtown station (n = 415)

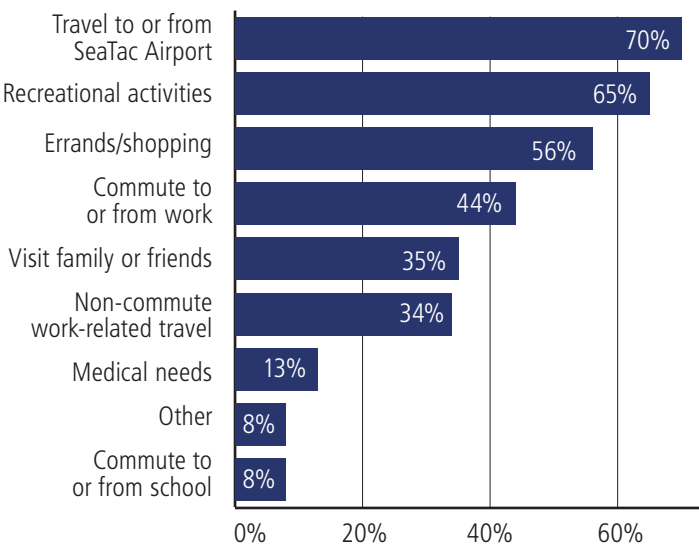


Figure 8

Figure 9

When asked to choose their preferred design theme for the downtown Redmond station area, respondents indicated natural environment (79%), followed by creative and technological hub (36%) and Redmond’s history and heritage (34%).

Some respondents offered other design suggestions, such as “the arts and creative culture” and “contemporary urban”.

Respondents who have lived in Redmond longer are more likely to favor a design theme representing Redmond’s history and heritage, with those who have lived in Redmond over 20 years being the most supportive.

Figure 10

Respondents are most interested in passing through the station area easily (87%), above and beyond their desire for other amenities. There is moderate interest for a variety of amenities or activities including purchasing food and beverages (47%), meeting up with friends (41%), picking up a bike (34%), or a temporary marketplace (33%).

Respondents offered additional suggestions for what they might do or see at the downtown Redmond station. Their comments primarily concern parking options, but also include restrooms, Wi-Fi, and public art.

Would you like to see the downtown Redmond station area design inspired by any of the following themes? Select up to 3 options.

Base: all respondents who provided feedback on the downtown station (n = 415)

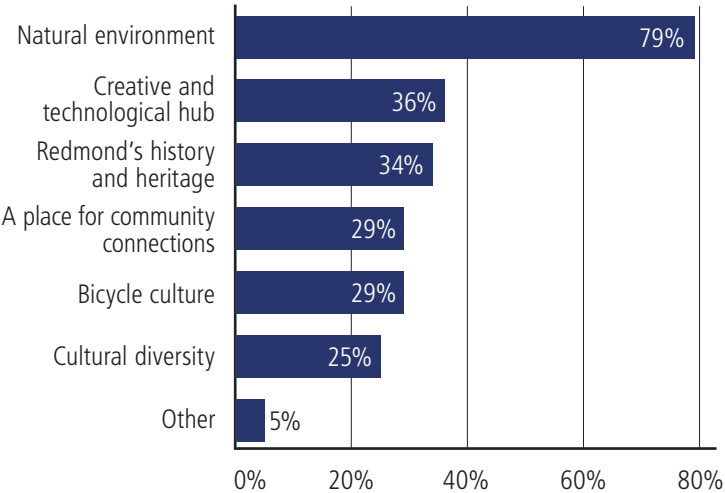


Figure 9

What do you want to do or see in the downtown Redmond station area plaza? Select all that apply.

Base: all respondents who provided feedback on the downtown station (n = 415)

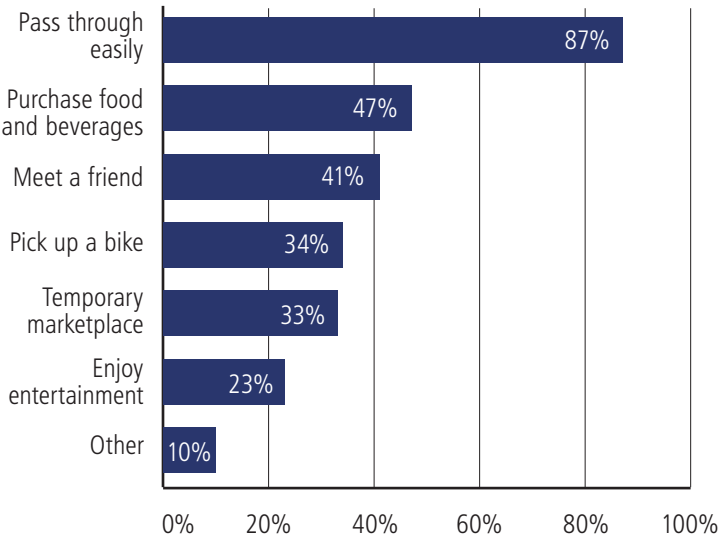


Figure 10

Figure 11

Respondents' top choices for downtown station area amenities are:

- Different seating options (54%)
- Gathering areas (46%)
- Flexible spaces for community activities (44%)
- Activities that enliven space (40%)

Respondents who have lived/worked in Redmond for 10 to 20 years are the least likely to want flexible spaces for community activities, whereas those who have lived/worked in Redmond for 5 years or less are the most likely to select this option. Newer residents/workers are also more likely to want the station to have gathering areas and fitness amenities. Those who have lived/worked in Redmond for longer, on the other hand, are more likely to ask for different seating options.

Southeast Redmond Station area

Figure 12

The majority of respondents plan to travel to or from the southeast Redmond station by:

- Driving and parking (66%)
- Taking the light rail (55%)
- Getting dropped off by car (53%)

Other frequently-mentioned modes include taking a bus, biking, or walking. Respondents plan to use other options as well, such as taking a motorcycle or using a scooter.

Redmond residents are more likely than other respondents to drive or get dropped off at the station.

Newer residents are more likely than longer-term residents to walk to the station. Seattle residents are more likely than residents of other cities to anticipate traveling by bike to the station.

For the downtown Redmond station area, which types of amenities would you like to have? Select all that apply.

Base: all respondents who provided feedback on the downtown station (n = 415)

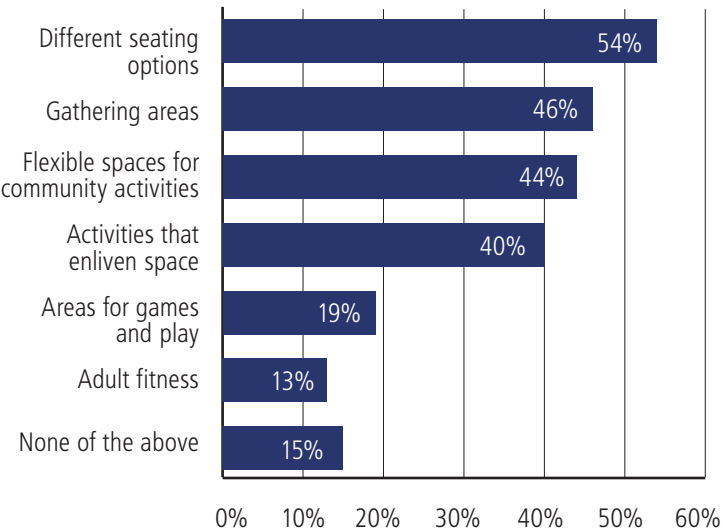


Figure 11

Please select all of the ways that you anticipate traveling to or from the southeast Redmond station.

Base: all respondents who provided feedback on the southeast Redmond station (n = 277)

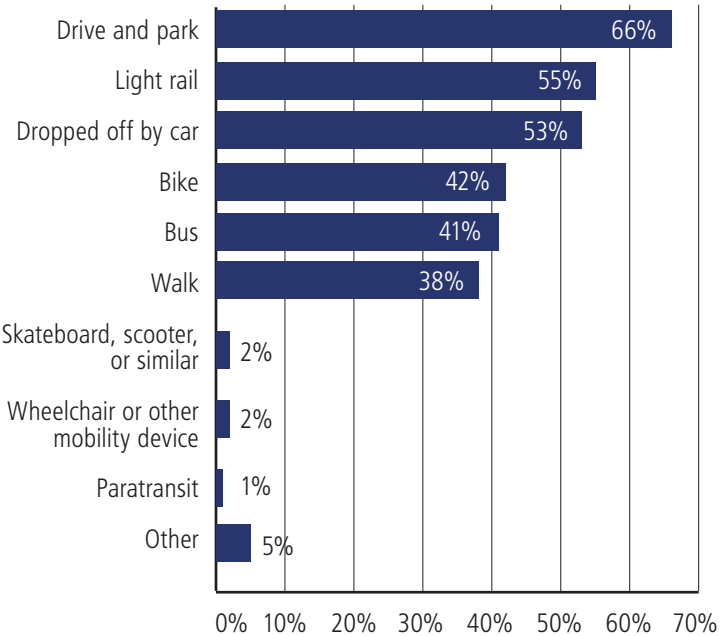


Figure 12

Figure 13

The majority of respondents plan to use the southeast Redmond station area for:

- Recreational activities (61%)
- Travel to/from SeaTac Airport (60%)
- Errands and/or shopping (47%)

Respondents also plan to use the southeast Redmond station for travel to Seattle (48% of “other” responses) or Marymoor Park.

When asked to indicate which design themes they wanted to see at the southeast Redmond station, most respondents opted for the natural environment (71%), followed closely by Marymoor Park, trails and outdoor recreation (70%).

Respondents offered other design suggestions as well, such as bears (for Bear Creek) and the arts. Longer-term residents/workers are more likely than other respondents to want to see Redmond history and heritage reflected in the station area design. Those who have lived/worked in the area for a shorter period of time are more likely to select the theme of creative and technological hub.

Figure 14

Respondents are most interested in passing through the station area easily (79%), above other amenities such as purchasing food and beverages (44%), picking up a bike (37%), or meeting a friend (33%).

Respondents offered additional suggestions, such as restrooms, Wi-Fi, and safe bike access.

Residents/workers of less than 5 years are more likely than those who have lived/worked in Redmond for more than 5 years to want a temporary marketplace at the station. Seattle residents are more likely than other respondents to pick up a bike at the southeast Redmond station.

What purposes do you anticipate using the southeast Redmond station for? Select all that apply.

Base: all respondents who provided feedback on southeast Redmond station (n = 277)

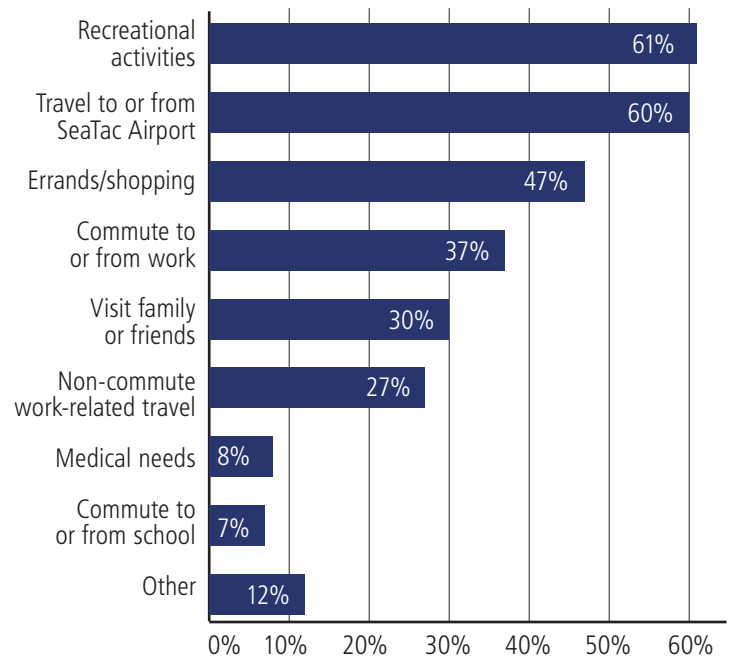


Figure 13

What do you want to do or see in the southeast Redmond station area plaza? Select all that apply.

Base: all respondents who provided feedback on southeast Redmond station (n = 273)

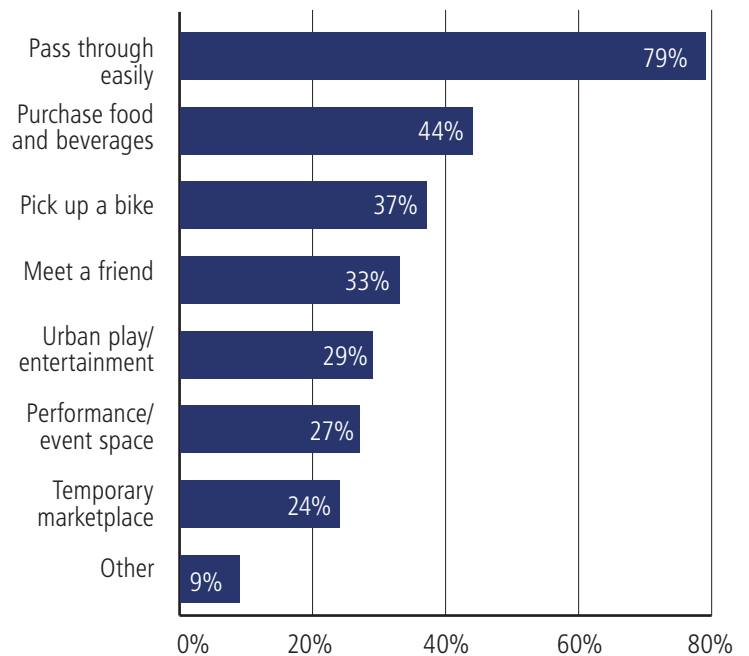


Figure 14

Figure 15

Respondents' top choices for station amenities are:

- Different seating options (47%)
- Gathering areas (46%)
- Flexible spaces for community activities (42%)
- Activities that enliven space (37%)

Those who have lived/worked in Redmond for a shorter period of time are more likely than longer-term residents/commuters to want the station to have adult fitness.

Which types of amenities would you like to have at the southeast Redmond station? Select all that apply.

Base: all respondents who provided feedback on the southeast Redmond station (n = 272)

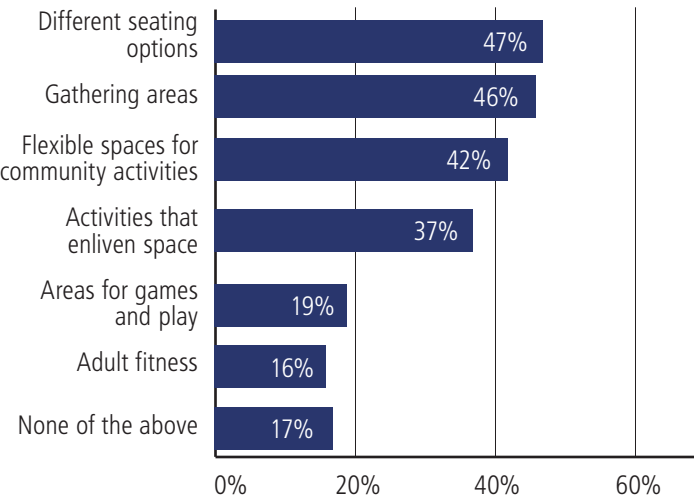


Figure 15

The survey showed 5 images of landscaping and asked respondents to select preferences for the southeast Redmond station area. Here are their choices.



52%



52%



48%



42%

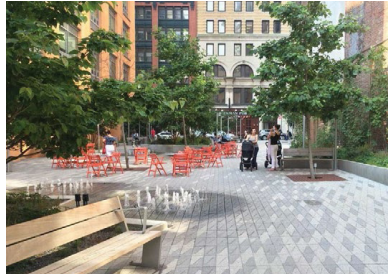


39%

The survey showed 6 images of hardscape and asked respondents to select their preferences for the southeast Redmond station area. Here are their choices.



52%



49%



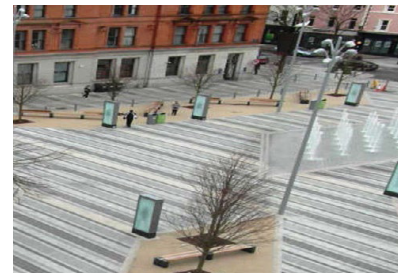
47%



52%



16%



9%

The survey showed 11 images of garage screens and asked respondents to select their preferences for the southeast Redmond station area. Here are their choices.



54%



49%



33%

The following choices received less than 30% of responses.



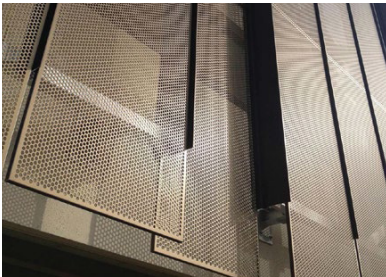
23%



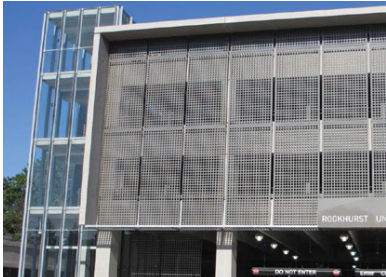
21%



17%



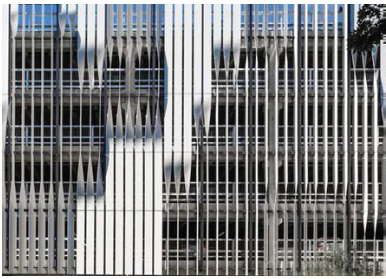
14%



11%



10%



7%



3%

The survey showed 5 images of lighting options and asked respondents (n=267) to select their preferences for the southeast Redmond station area. Here are their choices.



53%



43%



41%



35%

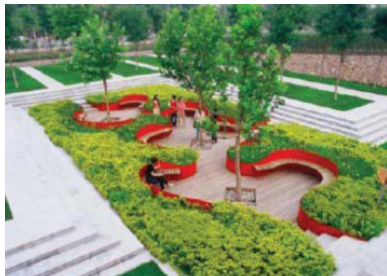


30%

The survey showed 5 images of seating options and asked respondents (n=267) to select their preferences for the southeast Redmond station area. Here are their choices.



71%



45%



35%



33%



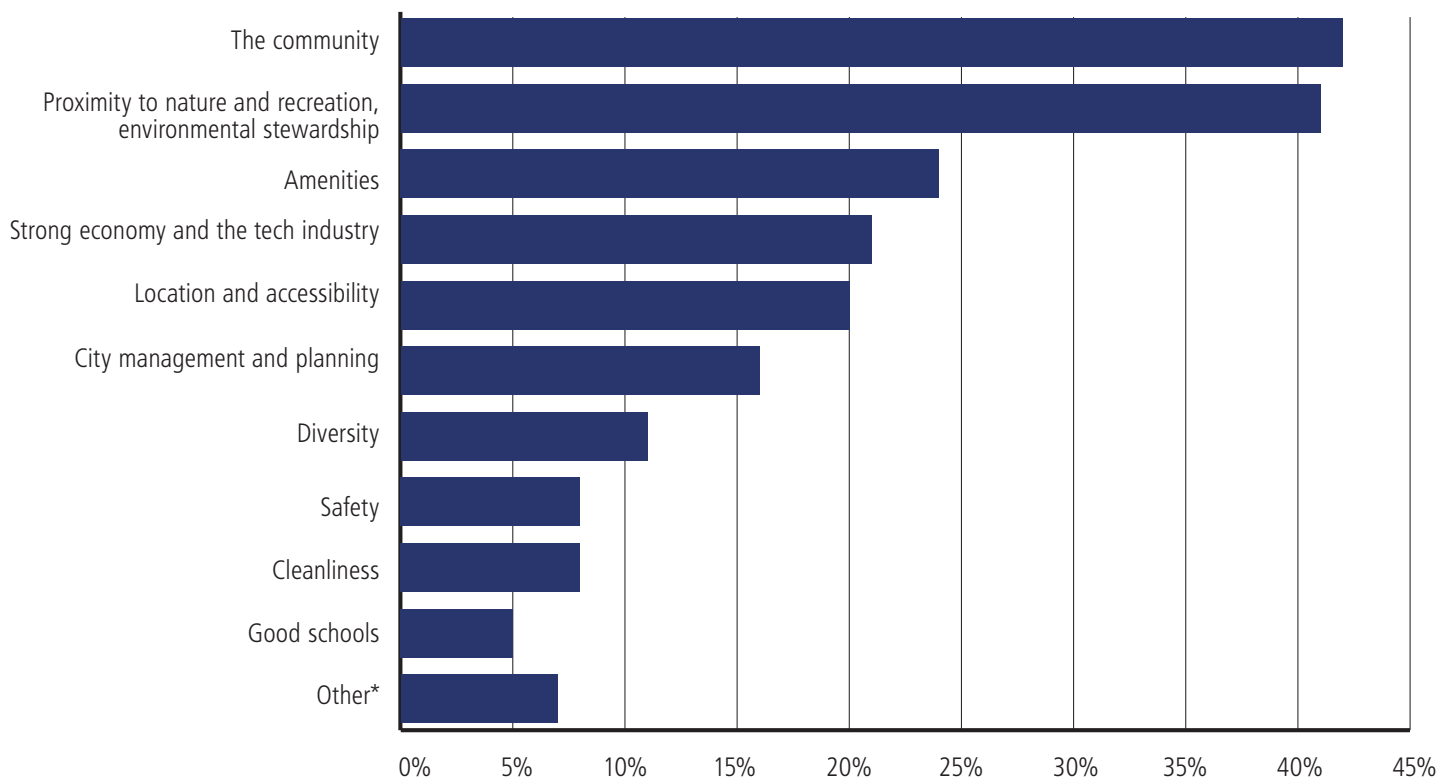
16%

Imagining the Future of Redmond

The survey asked an open-ended question about what makes respondents proud of Redmond. Respondents answered they are most proud of the strong sense of community in Redmond (42%) and its proximity to nature and recreation (41%). They also take pride in the range of available amenities (24%), the strong economy and growing technology industry (21%), and the city's accessibility to the rest of the region (20%).

What about Redmond makes you proud?

Base: all respondents (n = 330)



*Note: "Other" includes negative comments, responses unrelated to the question, and praise of how little congestion there is.

Respondents shared their hopes for the future of Redmond in the survey as well. They describe a strong sense of community with a robust economy. They envision a walkable, bikable City with a good public transit system and a smart, sustainable growth strategy. They hope Redmond can retain its proximity to nature and outdoor recreation. Values such as affordability, inclusivity, environmental stewardship, and diversity came up frequently, as did the hope that Redmond remains clean, safe, and charming.

The survey also asked respondents to share their thoughts about the future of the downtown Redmond and southeast Redmond light rail station areas. There is both excitement and concern about light rail in Redmond and how the City will manage growth. Respondents express support for stations that are accessible to people of all ages and abilities, so that everyone in the community can enjoy the benefits of light rail. Some people provided feedback on the type of amenities and transit options they would like to see at the station, including ways to keep the area safe for pedestrians and cyclists. The perennial concern about congestion and traffic surfaced, as did specific requests to make sure the stations remain safe, clean, and welcoming. Other comments touched on how the station design should preserve the character of the community, minimize environmental impacts, and reduce noise from trains arriving and departing.

Next Steps

The project team will evaluate the feedback gathered at the open house and survey. This input will help inform the requirements for the contractor(s) hired to design and build the project. The City of Redmond will also consider this input as the City plans for future development and services near light rail stations. Downtown Redmond Link construction is expected to begin in 2020 with light rail open for service by 2024.